

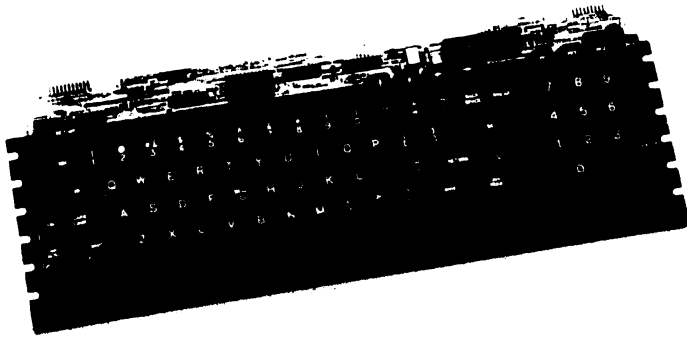


key tronic

Principal cities worldwide

| | |
|--------------|----------|
| MODEL L2207 | KEYBOARD |
| 83 KEY VT100 | |

83 KEY VT100



STANDARD FEATURES

- Low-Profile Solid-State Switches
- Durable 2-Shot Molded Keytops
- N-Key Rollover
- 5 VDC Operation
- Rigid Frame Mounting
- 5 Year Switch Warranty
- Sculptured Keytops
- Off-The-Shelf Availability
- TTL Level Serial Input/Output (300 Baud)

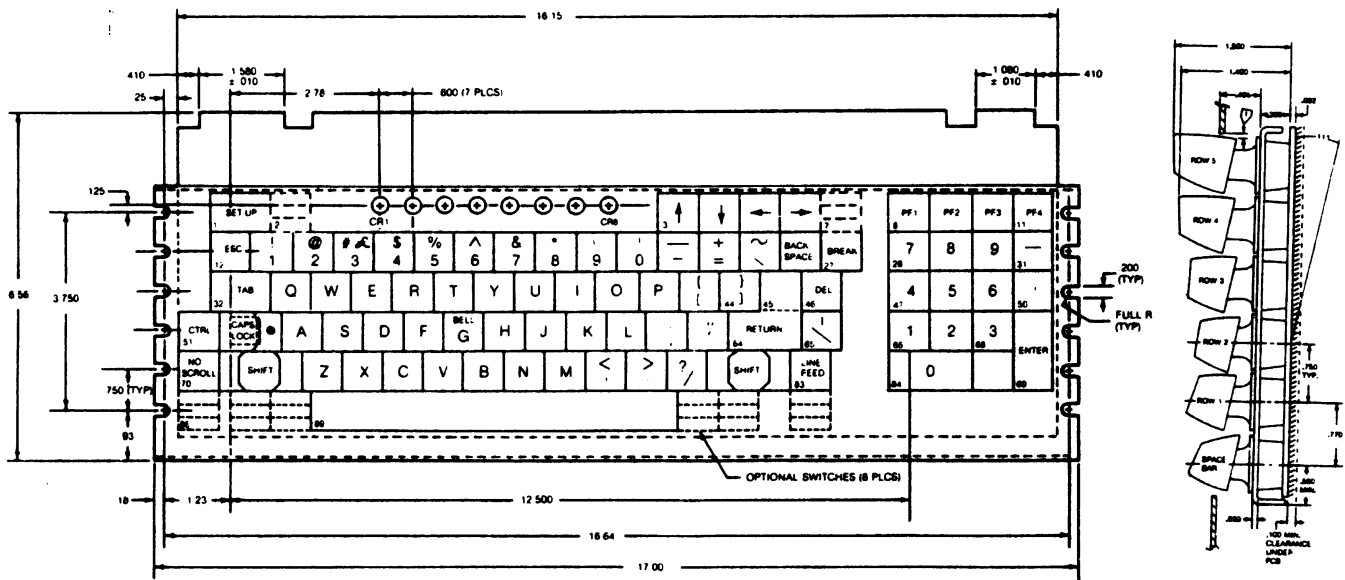
OPTIONAL FEATURES

- 9 Additional Keys
- Parallel Data Output
- Card-Edge or Header Connector
- Minimum Interface

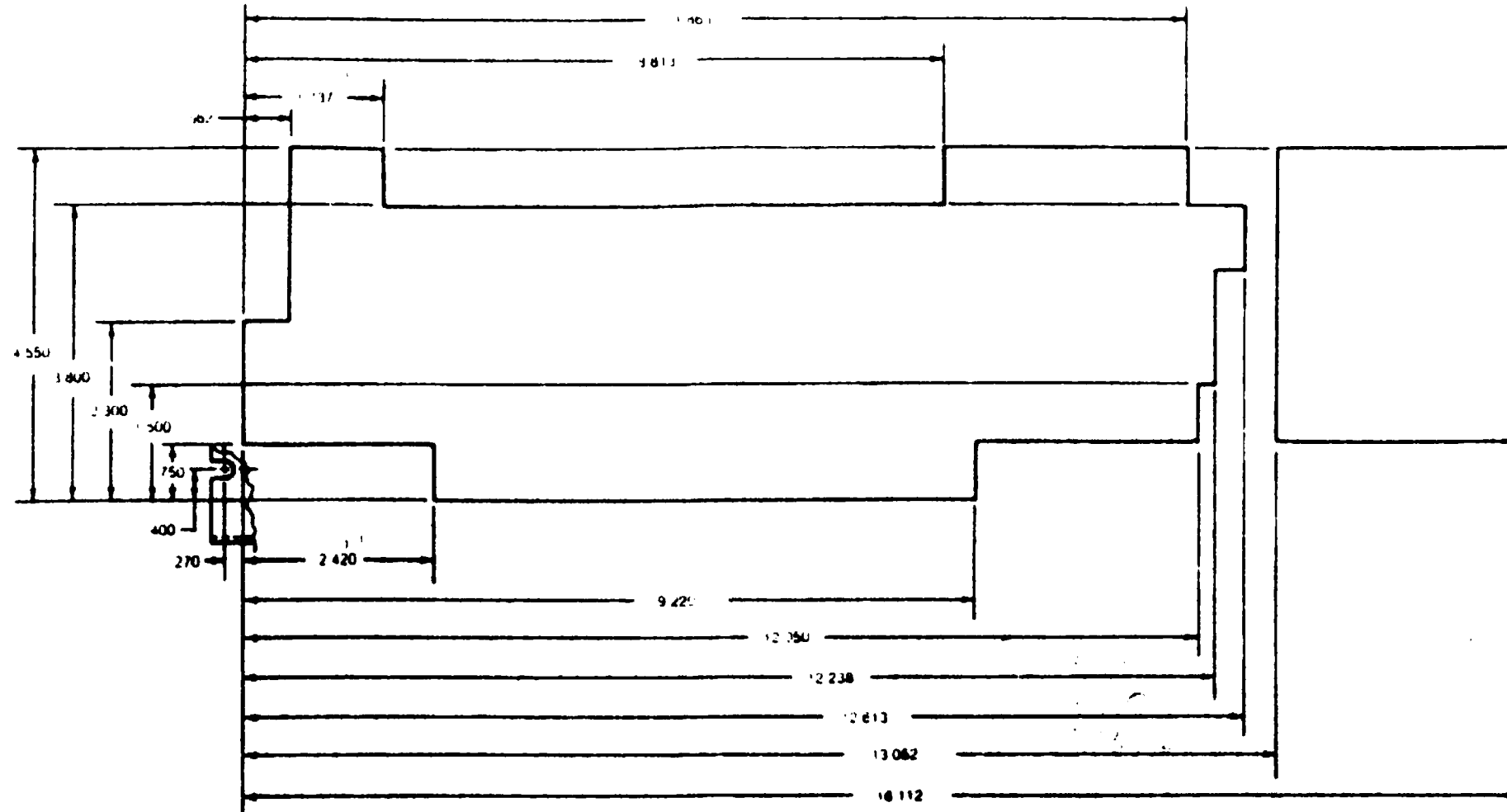
DESCRIPTION:

The Model L2207 offers the popular key layout for a detachable, serial interface terminal keyboard. An on-board microcomputer provides features not found on any other keyboard. The simple four-wire serial port provides four modes of key data and allows the terminal to actuate the LED indicators and an audible device which beeps or clicks as instructed.

Key Tronic sales representatives are located worldwide to assist you with your unique keyboard requirements. They have pricing, delivery, and part number information on all of our standard designs, and can also work with you to specify a low-cost custom keyboard if required.



ENCLOSURE CUTOOUT



ASCII CODE TABLE

| Key | Unshift | Shift | Control | Control & Shift | Key | Unshift | Shift | Control | Control & Shift |
|-----|---------|-------|---------|-----------------|-----|-----------|-------|---------|-----------------|
| 1 | / FE | FE | FE | FE | 47 | D0 | D0 | D0 | D0 |
| 2 | F0 | F0 | F0 | F0 | 48 | D1 | D1 | D1 | D1 |
| 3 | F1 | F1 | F1 | F1 | 49 | D2 | D2 | D2 | D2 |
| 4 | F2 | F2 | F2 | F2 | 50 | D3 | D3 | D3 | D3 |
| 5 | F3 | F3 | F3 | F3 | 51 | CONTROL | | | |
| 6 | F4 | F4 | F4 | F4 | 52 | CAPS LOCK | | | |
| 7 | F5 | F5 | F5 | F5 | 53 | a | A | SOH | SOH |
| 8 | F6 | F6 | F6 | F6 | 54 | s | S | DC3 | DC3 |
| 9 | F7 | F7 | F7 | F7 | 55 | d | D | EOT | EOT |
| 10 | F8 | F8 | F8 | F8 | 56 | l | F | ACK | ACK |
| 11 | F9 | F9 | F9 | F9 | 57 | g | G | BEL | BEL |
| 12 | ESC | ESC | ESC | ESC | 58 | h | H | BS | BS |
| 13 | 1 | ! | 1 | ! | 59 | k | J | LF | LF |
| 14 | 2 | @ | NUL | NUL | 60 | k | K | VT | VT |
| 15 | 3 | # | E5 | E5 | 61 | l | L | FF | FF |
| 16 | 4 | \$ | 4 | \$ | 62 | : | : | : | : |
| 17 | 5 | % | 5 | % | 63 | . | . | . | . |
| 18 | 6 | & | 6 | & | 64 | CR | CR | CR | CR |
| 19 | 7 | & | 7 | & | 65 | . | . | FS | FS |
| 20 | 8 | * | 8 | * | 66 | CO | CO | CO | CO |
| 21 | 9 | (| 9 | (| 67 | C1 | C1 | C1 | C1 |
| 22 | 0 |) | 0 |) | 68 | C2 | C2 | C2 | C2 |
| 23 | - | _ | US | US | 69 | C3 | C3 | C3 | C3 |
| 24 | = | + | = | + | 70 | BO | BO | BO | BO |
| 25 | \ | ~ | \ | ~ | 71 | SHIFT | | | |
| 26 | BS | BS | BS | BS | 72 | z | Z | SUB | SUB |
| 27 | E0 | E0 | E0 | E0 | 73 | x | X | CAN | CAN |
| 28 | E1 | E1 | E1 | E1 | 74 | c | C | ETX | ETX |
| 29 | E2 | E2 | E2 | E2 | 75 | v | V | SYN | SYN |
| 30 | E3 | E3 | E3 | E3 | 76 | b | B | STX | STX |
| 31 | E4 | E4 | E4 | E4 | 77 | n | N | SO | SO |
| 32 | HT | HT | HT | HT | 78 | m | M | CR | CR |
| 33 | q | Q | DC1 | DC1 | 79 | . | < | . | < |
| 34 | w | W | ETB | ETB | 80 | . | > | . | > |
| 35 | e | E | ENQ | ENQ | 81 | / | ? | / | ? |
| 36 | r | R | DC2 | DC2 | 82 | SHIFT | | | |
| 37 | i | I | DC4 | DC4 | 83 | OA | OA | OA | OA |
| 38 | y | Y | EM | EM | 84 | B1 | B1 | B1 | B1 |
| 39 | u | U | NAK | NAK | 85 | B2 | B2 | B2 | B2 |
| 40 | i | I | HT | HT | 86 | A0 | A0 | A0 | A0 |
| 41 | o | O | SI | SI | 87 | A1 | A1 | A1 | A1 |
| 42 | p | P | DLE | DLE | 88 | A2 | A2 | A2 | A2 |
| 43 | { | { | ESC | ESC | 89 | SP | SP | SP | SP |
| 44 | } | } | GS | GS | 90 | A3 | A3 | A3 | A3 |
| 45 | D4 | D6 | D4 | D6 | 91 | A4 | A4 | A4 | A4 |
| 46 | DEL | DEL | DEL | DEL | 92 | A5 | A5 | A5 | A5 |

ELECTRICAL DATA:

Input Power + 5 VDC @ 500 ma. max.
 Data Output 8 Bit ASCII
 (+ Logic, - Logic Optional)
 Serial Output 1 Start Bit, 8 Data Bits,
 1 Stop Bit
 (+ Logic, 300 Baud)
 Parallel Data Strobe Pulsed
 (+ Logic)

MECHANICAL DATA:

Key Total Travel 0.171 in.
 (4.34 mm)
 Key Actuating Force 2.0 oz
 (57 gr.)
 Keytop Color Ink Brown
 (Cyclocac 82741)
 Switch Reliability 100 Million MCBF

CONNECTOR DETAIL:

Serial Port:

| PIN | FUNCTION |
|-----|----------------|
| 1 | + 5 VDC |
| 2 | Output |
| 3 | Ground |
| 4 | Chassis Ground |
| 6 | Input |

Parallel Port (Card-Edge/Header):

| PIN | FUNCTION | PIN | FUNCTION |
|-------|----------|------|----------------|
| 1/1 | + 5 VDC | A/2 | Ground |
| 3/4 | B0 | F/10 | Clicker |
| 4/5 | B1 | H/12 | LED 1 & 2 |
| 5/6 | B2 | J/13 | LED 3 |
| 6/7 | B3 | K/17 | LED 4 |
| 7/11 | B4 | L/18 | LED 5 |
| 8/14 | B5 | M/19 | LED 6 |
| 9/15 | B6 | N/22 | LED 7 |
| 10/16 | B7 | P/24 | LED 8 |
| 14/25 | Strobe | R/26 | Chassis Ground |

RECOMMENDED CONNECTOR:

Serial Port: Amp 1-87175-3 or equiv.
 Parallel Card-Edge: Amp 88373-4
 (.100 in. centers) or equiv.
 Parallel Header (Optional): Berg 65846-019
 or equiv.

ORDERING INFORMATION:

When ordering, refer to Key Tronic part number 65-02207-001. For pricing and availability, consult our nearest representative located in principal cities, worldwide.



Principal Cities Worldwide

P.O. BOX 14687 SPOKANE, WA 99214 USA
 TELEPHONE 509-928-8000 TWX 510 773-1885

SERIAL INPUT DATA:

| Data Bit | Audible Data | LED Data |
|----------|--|----------------------------|
| B 0 | 0 | 1 |
| B 1 | Short Beep (1) | LED 1 & 2 (complements) |
| B 2 | Long Beep (1) | LED 3 |
| B 3 | Clicker Disable (1) or Clicker enable (0) | LED 4 |
| B 4 | N/A | LED 5 |
| B 5 | N/A | LED 6 |
| B 6 | N/A | LED 7 |
| B 7 | N/A | LED 8 |

| REV. | ECO | BY | DESCRIPTION | APP. | DATE |
|------|-------|-----|------------------------------|--------|---------|
| R | 13467 | BB | REDRAWN FOR CLARITY | 2/7/82 | 5-11-82 |
| S | 13764 | LR | ADD -018 & -065 ASSYS | 4/2/82 | 6-11-82 |
| T | 14074 | JWA | CHNG NOTE (1) (9) DELETE (3) | 2/7/82 | 7-29-82 |
| U | 14680 | LR | ADD -19 & -20 ASSYS | 7/1/82 | 3-23-82 |
| V | 15201 | LR | ADDED (12) | 2/7/82 | 11-4-82 |

48-00300-D/D 3.58 MHZ

