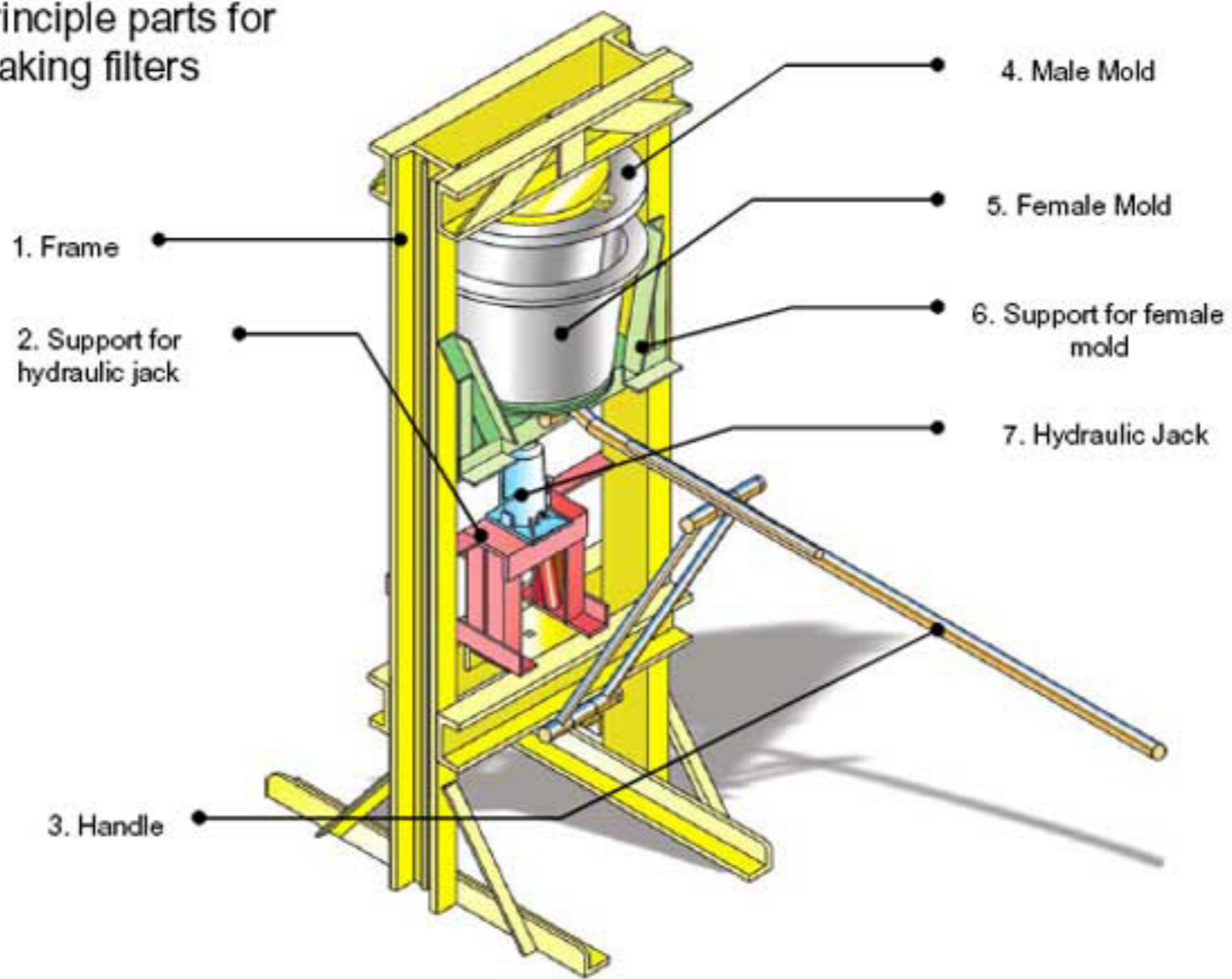


Appendix 4. Filter Press Schematics

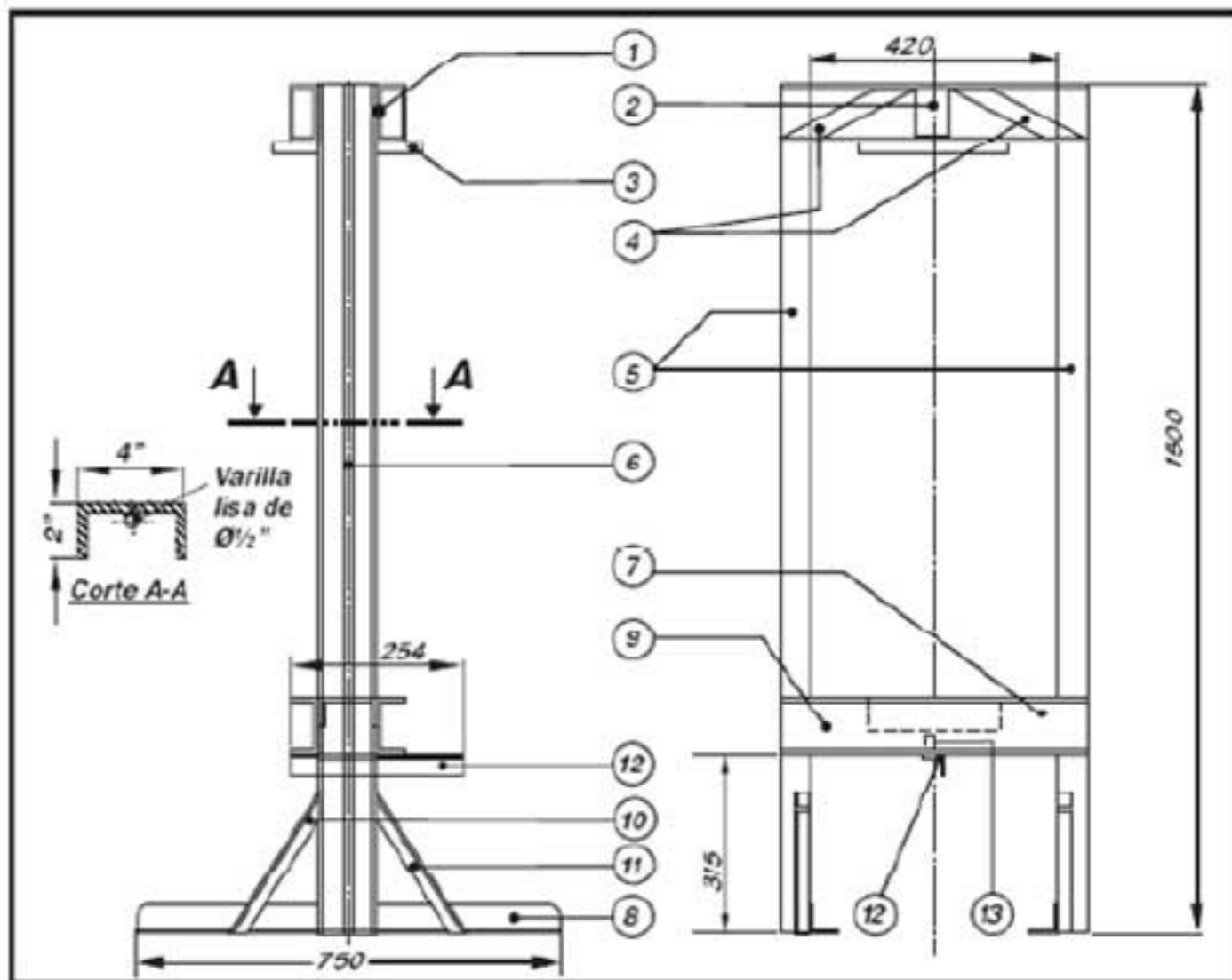
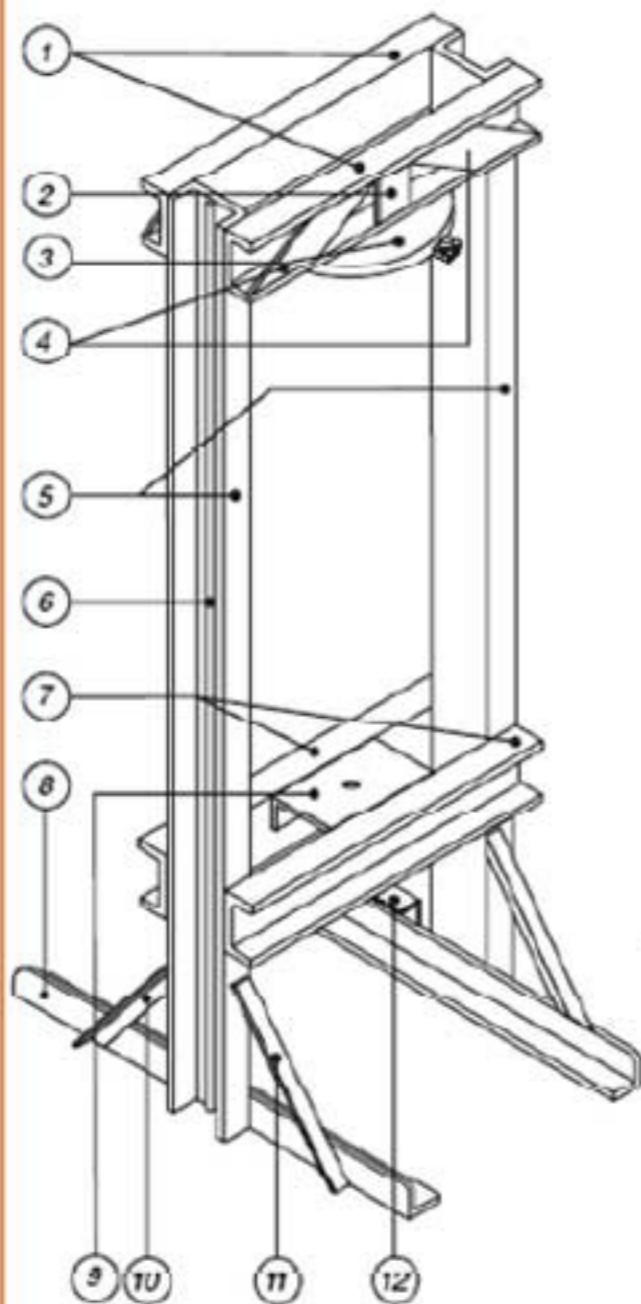
INSTRUCTION MANUAL FOR FABRICATION THE PRESS TO MAKE FILTERS

Principle parts for making filters



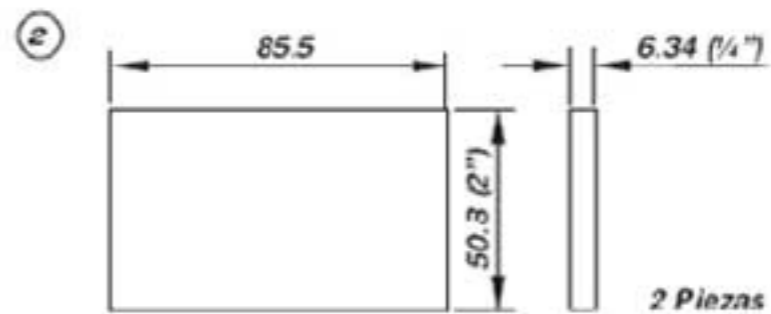
Dutch Press Schematics

I. FRAME



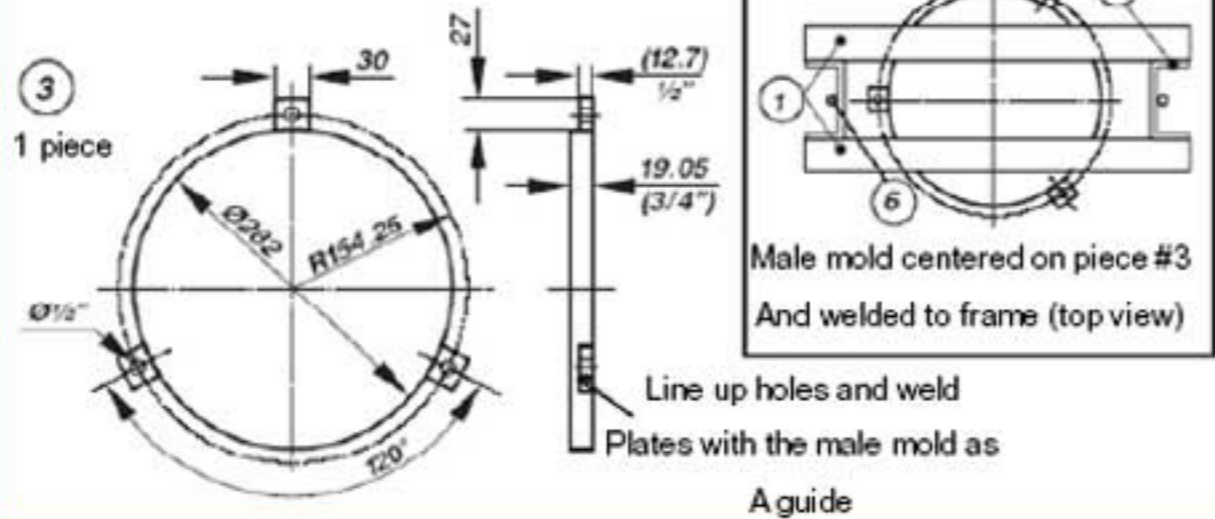
FRAME PIECES

① Profile in "C" (4"x2"). Length = 508mm (2 Pieces)

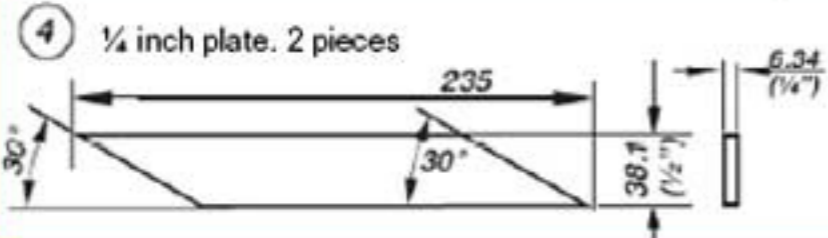
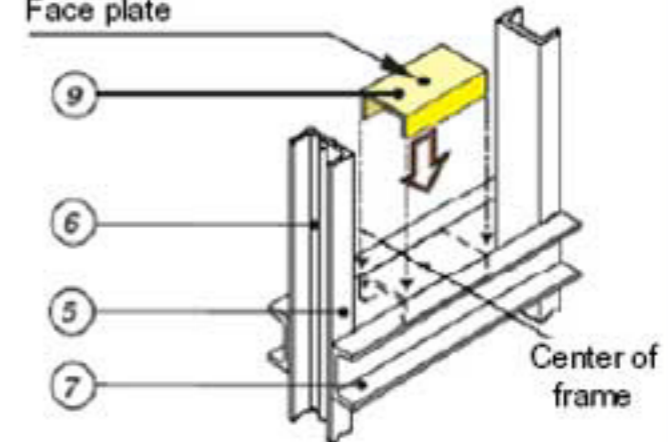


1. Frame continued (pieces of the frame)

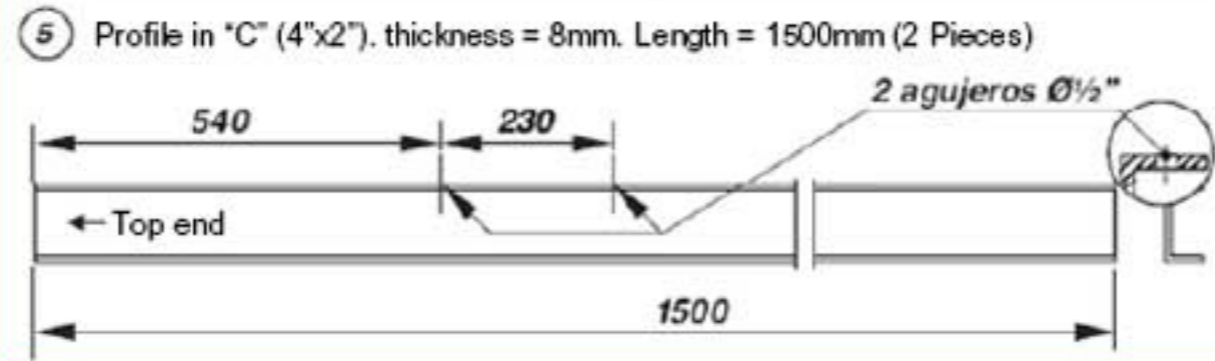
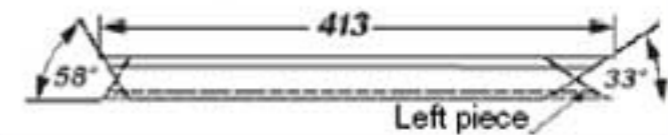
Pieces of the frame



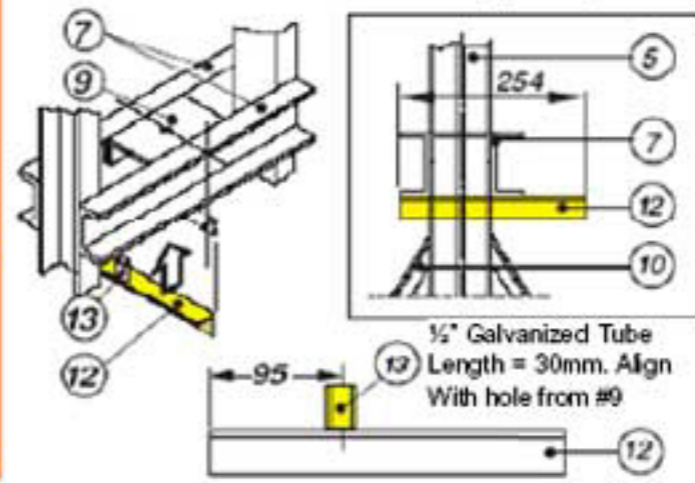
⑨ Profile in "C" (4"x2").
Length = 180mm. (1 Piece)
Drill 1/2" hole in center of
Face plate



⑩ ⑪ Angle 1"x1". Thickness 3mm.
Cut 2 right pieces and
2 Left pieces



⑫ Angle 1 1/2" x 1 1/2". Length = 254
Thickness = 5mm (1 piece)

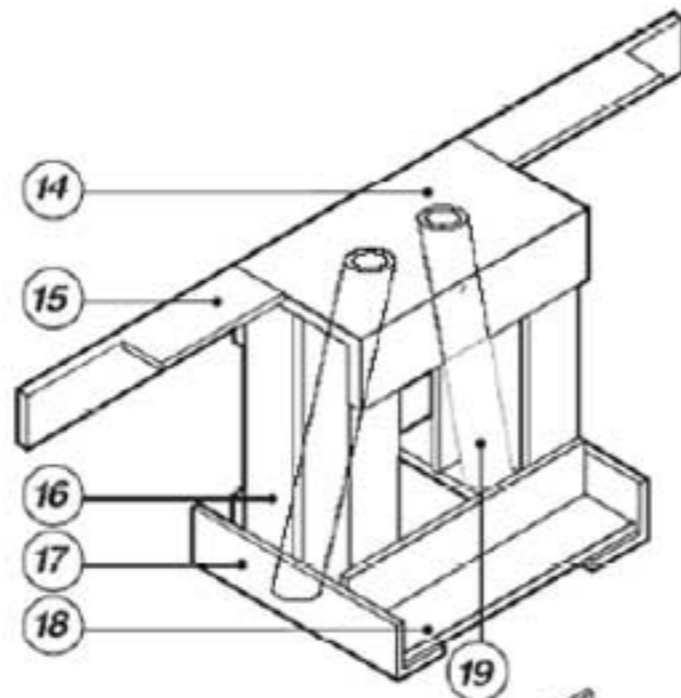


⑥ 1/2 inch smooth rod
Length = 1500mm. (2 pieces)

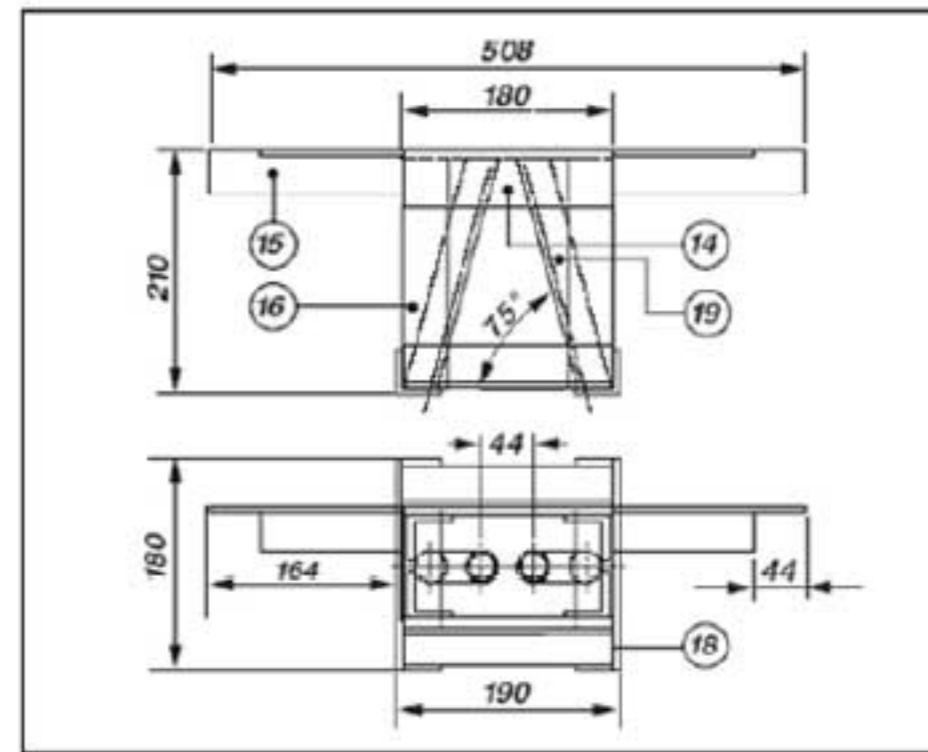
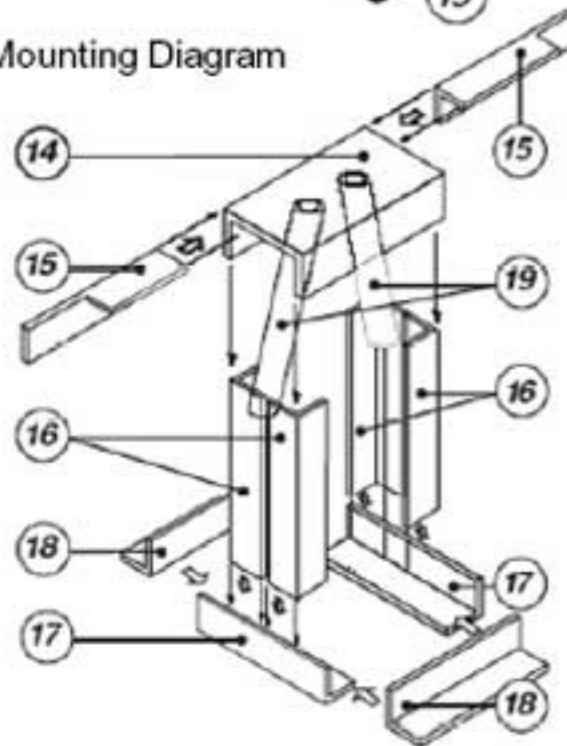
⑧ Angle 2"x2"
Thickness = 4mm
Length = 750mm
Round off edges (2 pieces)

⑦ Profile in "C" (4"x2"). Thickness = 8mm
Length = 508mm. (2 pieces)

2. Support for the Hydraulic Jack

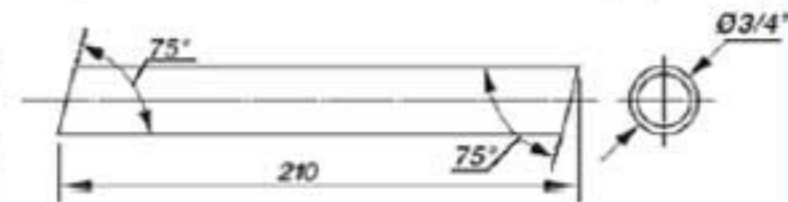


Mounting Diagram

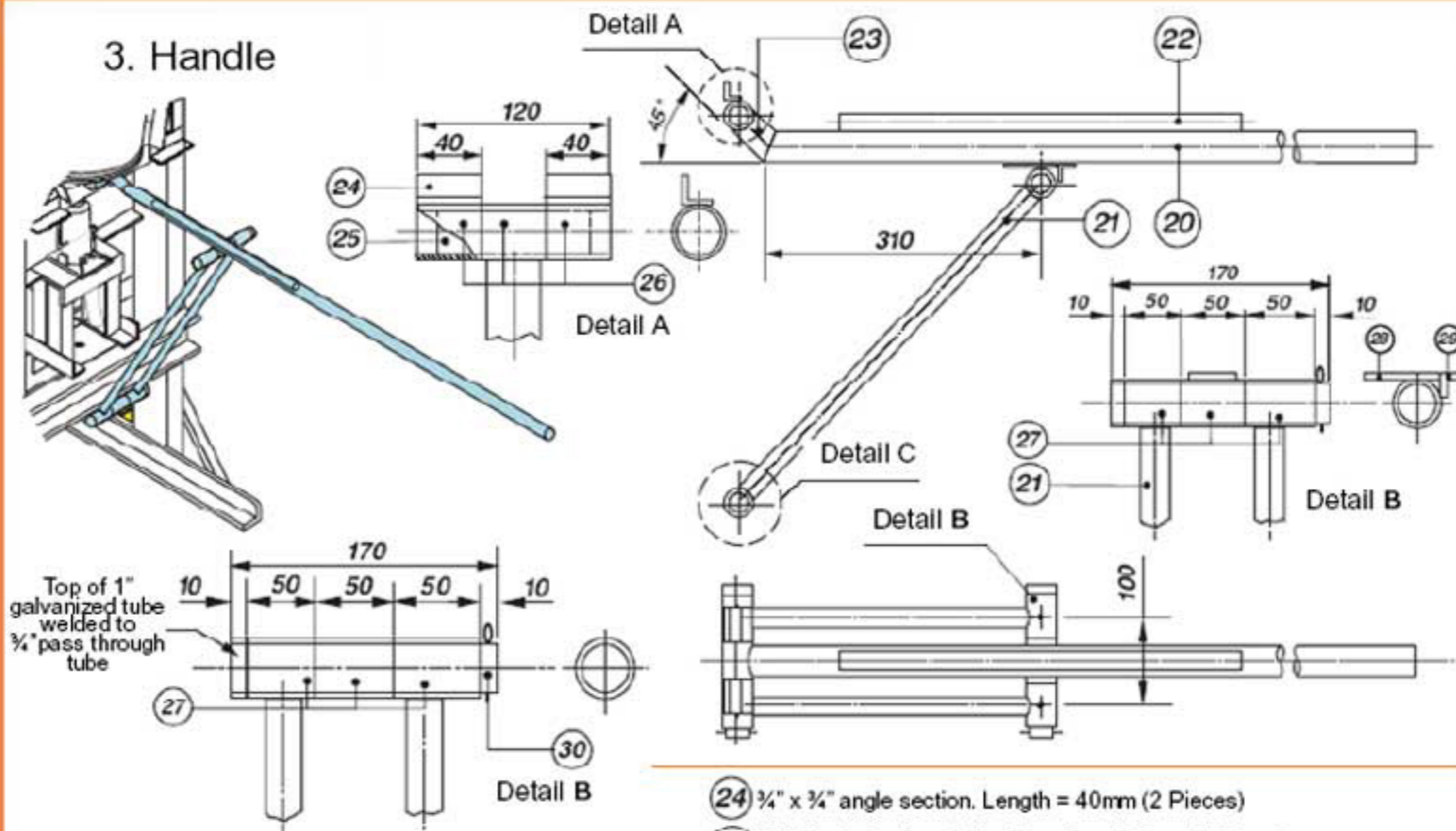


Pieces for the hydraulic jack

- ⑭ Profile "C" (4" x 2"). Length = 180. (1 Piece)
- ⑮ Angle 1 ½" x 1 ½". Length = 164mm. Thickness = 5mm (2 pieces)
*Cut one straight piece and one left angle
- ⑯ Angle 1 ½" x 1 ½". Length = 197mm. Thickness = 5mm (4 pieces)
- ⑰ Angle 1 ½" x 1 ½". Length = 180mm. Thickness = 5mm (2 pieces)
- ⑱ Angle 1 ½" x 1 ½". Length = 180mm. Thickness = 5mm (4 pieces)
- ⑲ ¾" dia. Galvanized Tube. Length = 210mm (2 pieces)



3. Handle



Pieces of the handle

- (20) 1" Dia Galvanized Tube. Length = 1340mm (1 Pieces)
- (21) 1/2" Dia Galvanized Tube. Length = 465mm (2 Pieces)
- (22) 1/2" Dia Galvanized Tube. Length = 450mm (1 Pieces)
- (23) 1" Dia Galvanized Tube. Length = 50mm (1 Pieces)

- (24) 3/4" x 3/4" angle section. Length = 40mm (2 Pieces)
- (25) 3/4" Dia Galvanized Tube. Length = 100mm (1 Pieces)
- (26) 1" Dia Galvanized Tube. Length = 40mm (3 Pieces)
- (27) 1" Dia Galvanized Tube. Length = 50mm (6 Pieces)
- (28) Plate 58 x 25.4 mm x 3 mm (1 Pieces)
- (29) 3/4" x 3/4" angle section. Length = 25.4mm (1 Pieces)
- (30) 3/4" Dia Galvanized Tube. Length = 170mm (2 Pieces)