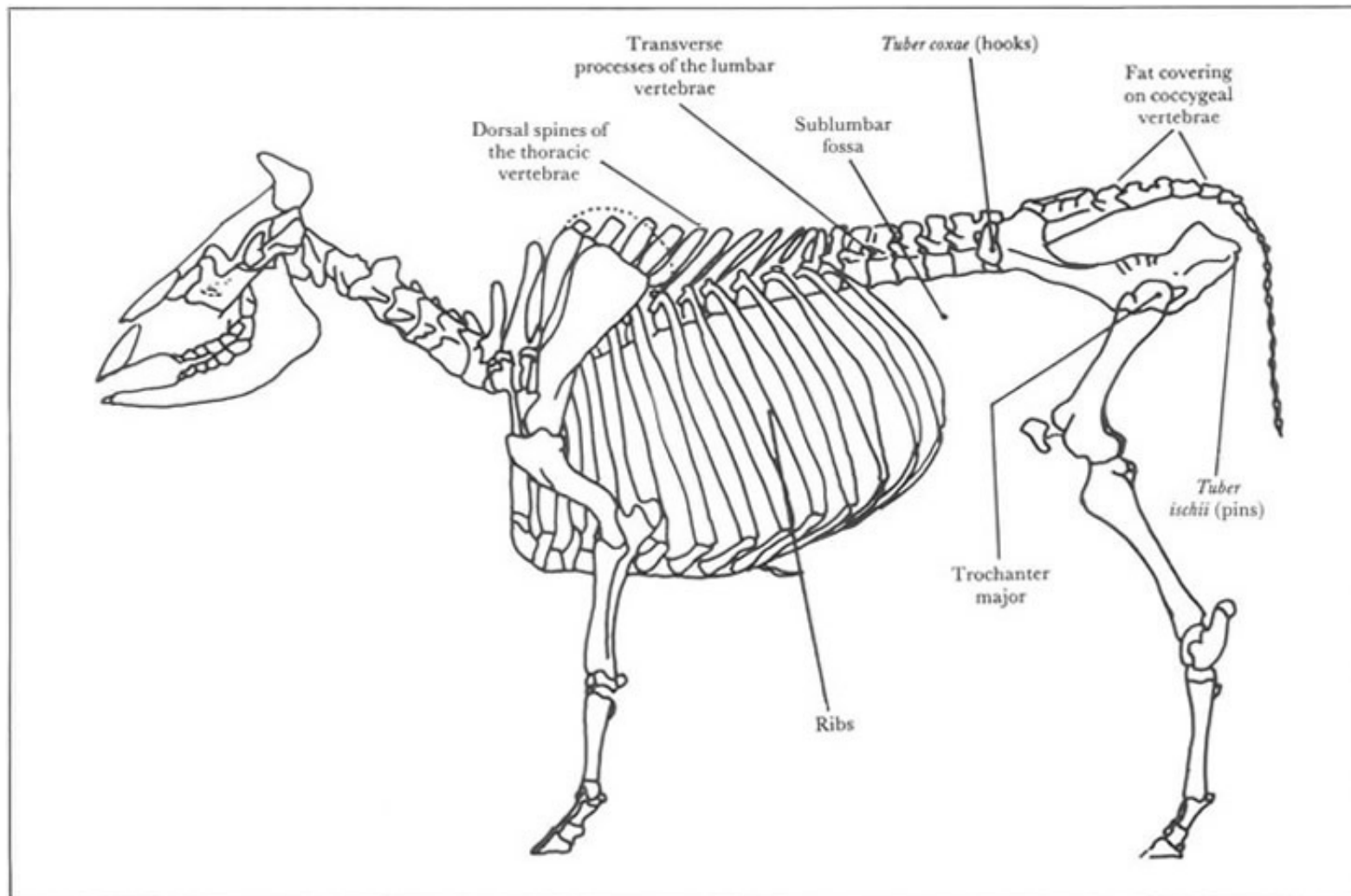


A GUIDE TO CONDITION SCORING OF ZEBU CATTLE

Figure 1

Distinctive anatomical parts of importance in condition scoring



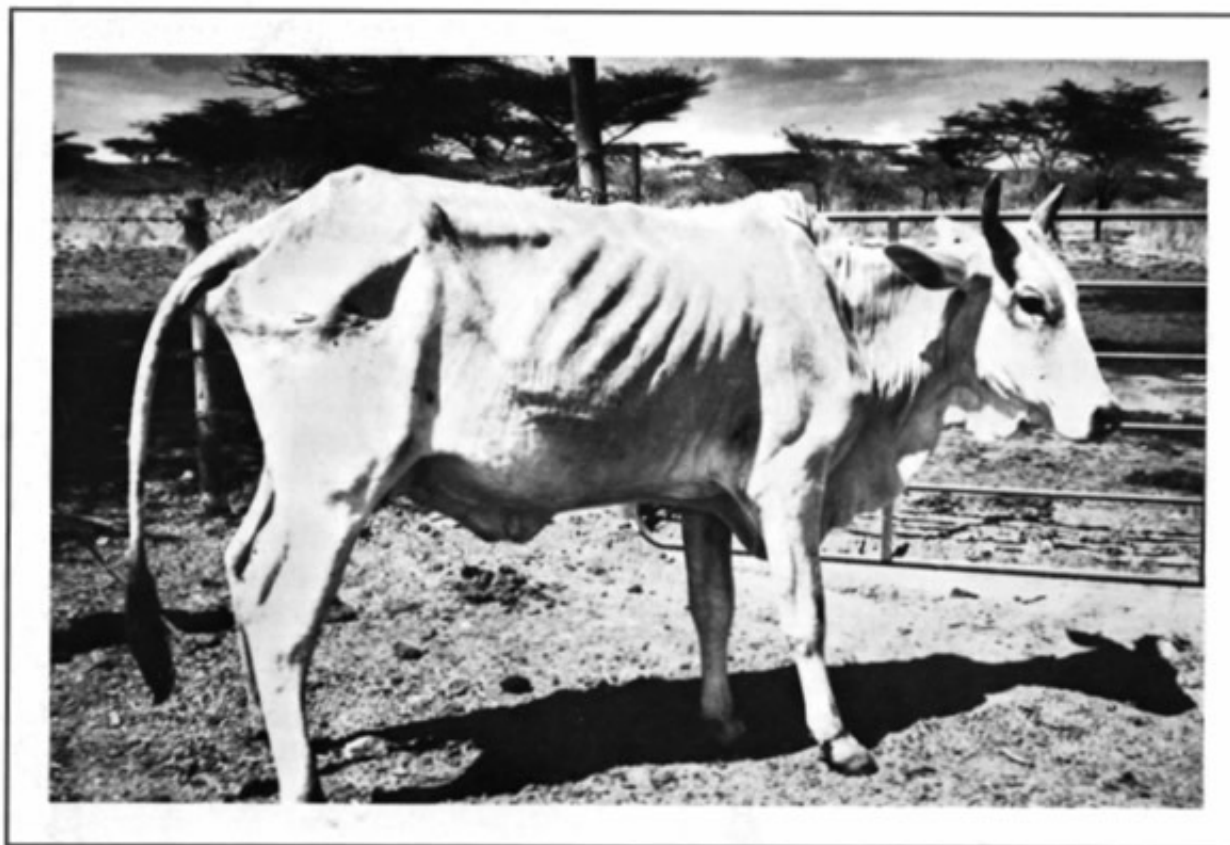
A GUIDE TO CONDITION SCORING OF ZEBU CATTLE

Figure 2

L-

Marked emaciation;
Animal would be condemned at ante mortem examination

A



B



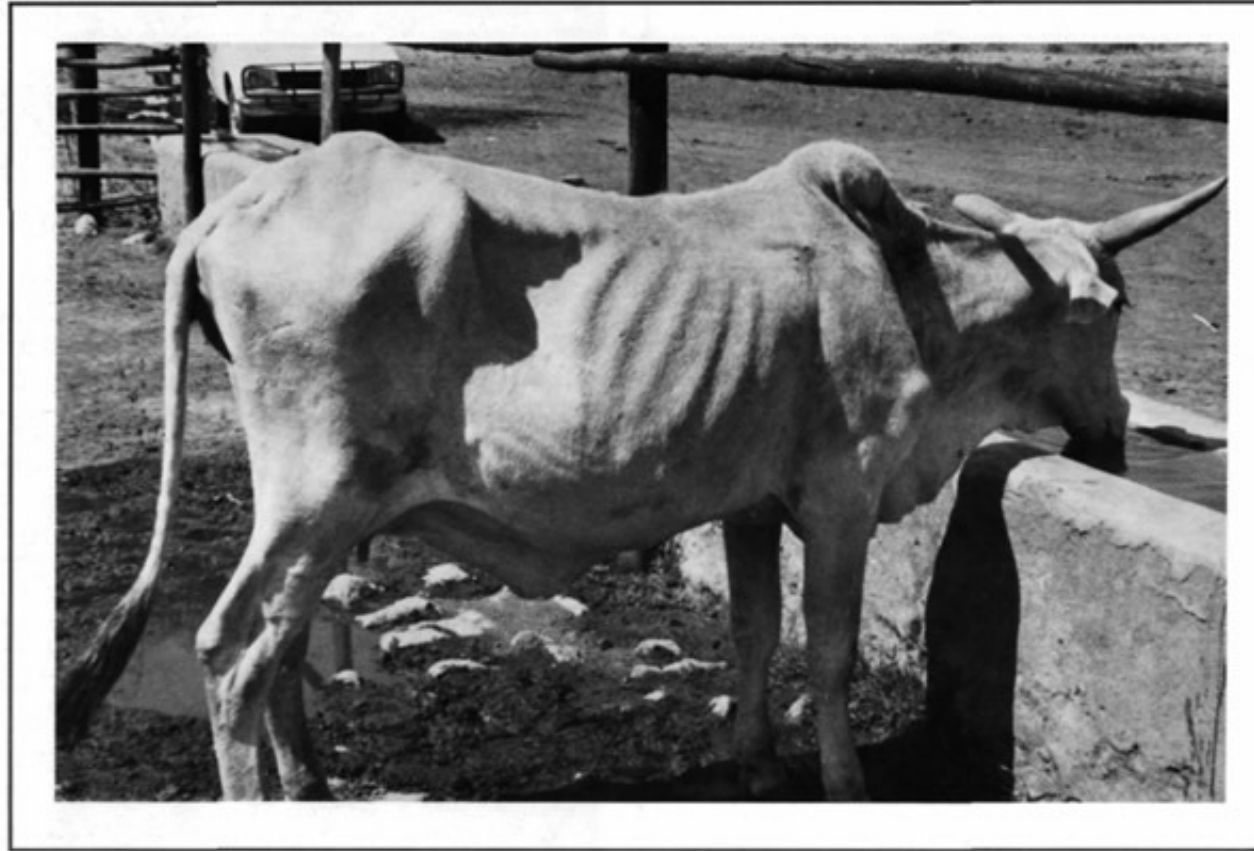
A GUIDE TO CONDITION SCORING OF ZEBU CATTLE

Figure 3

L

Note the slack skin over the hump and the wasting in the leg muscles

A



B



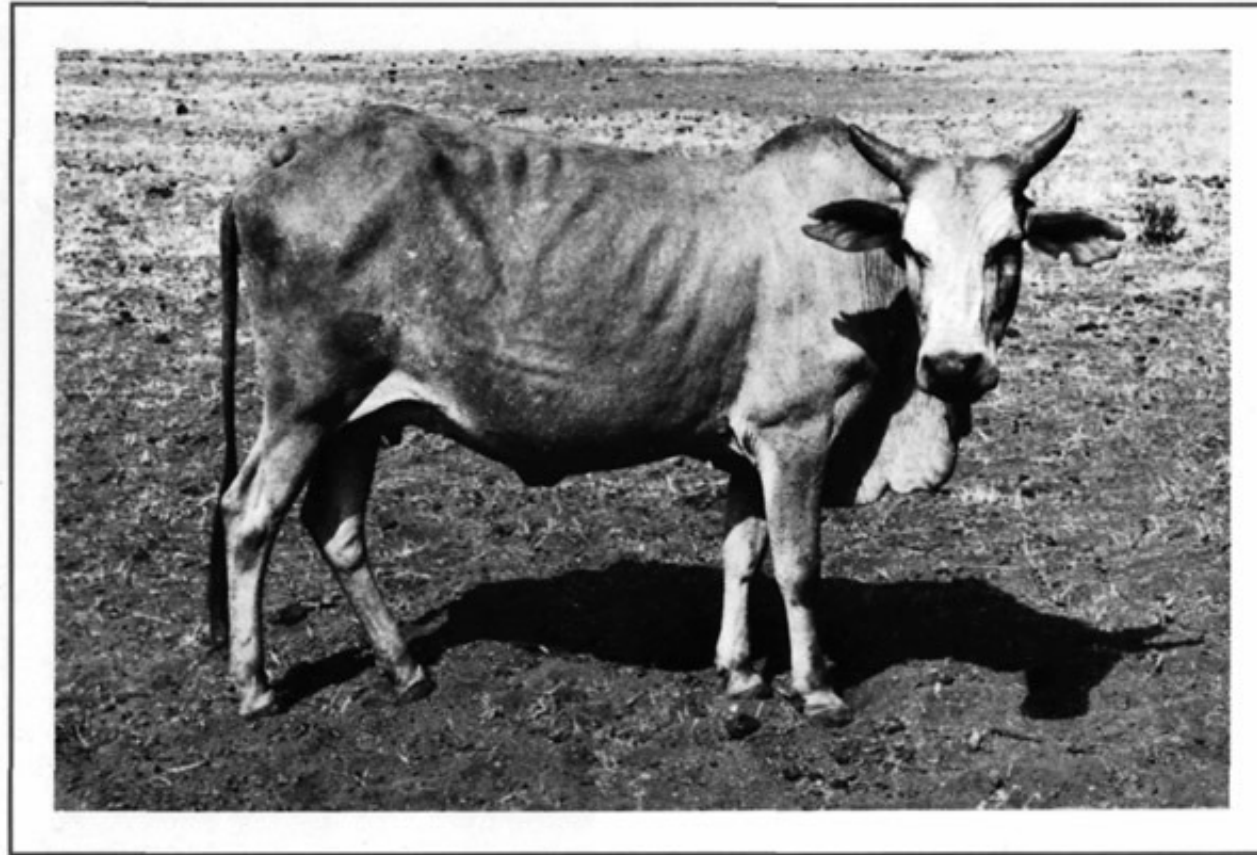
A GUIDE TO CONDITION SCORING OF ZEBU CATTLE

Figure 4

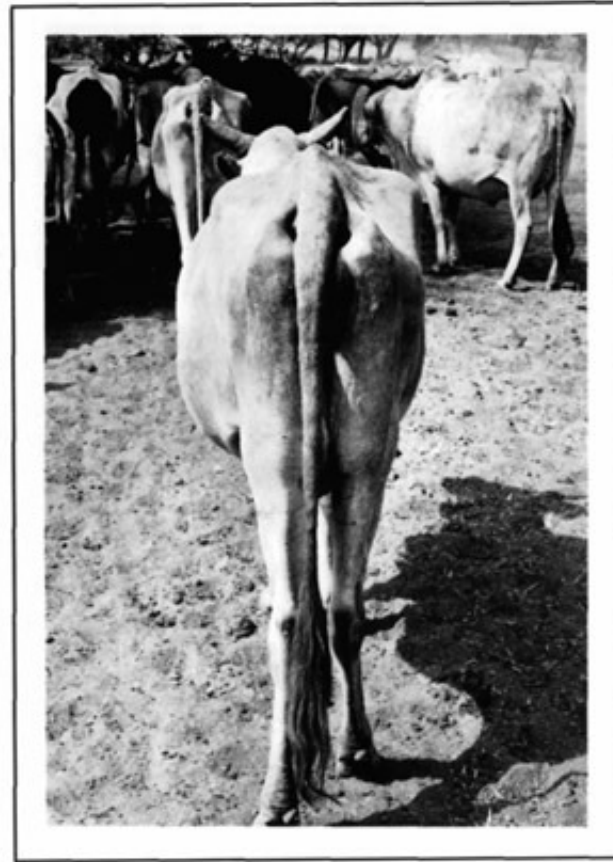
L+

The ribs and transverse processes are less protruding than in L.
The muscle mass between the hooks is concave

A



B



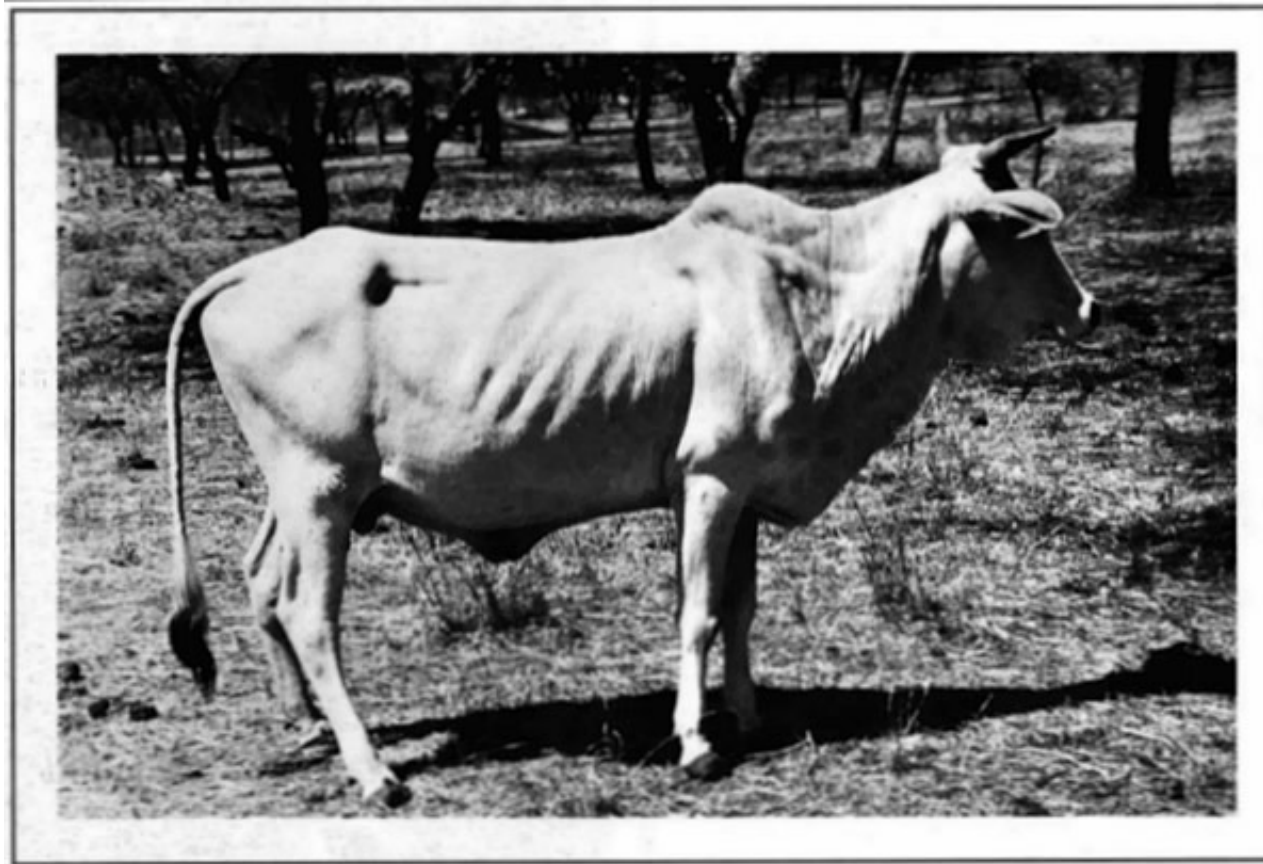
A GUIDE TO CONDITION SCORING OF ZEBU CATTLE

Figure 5

M-

Note that unlike in L+, the transverse processes cannot be seen individually

A



B



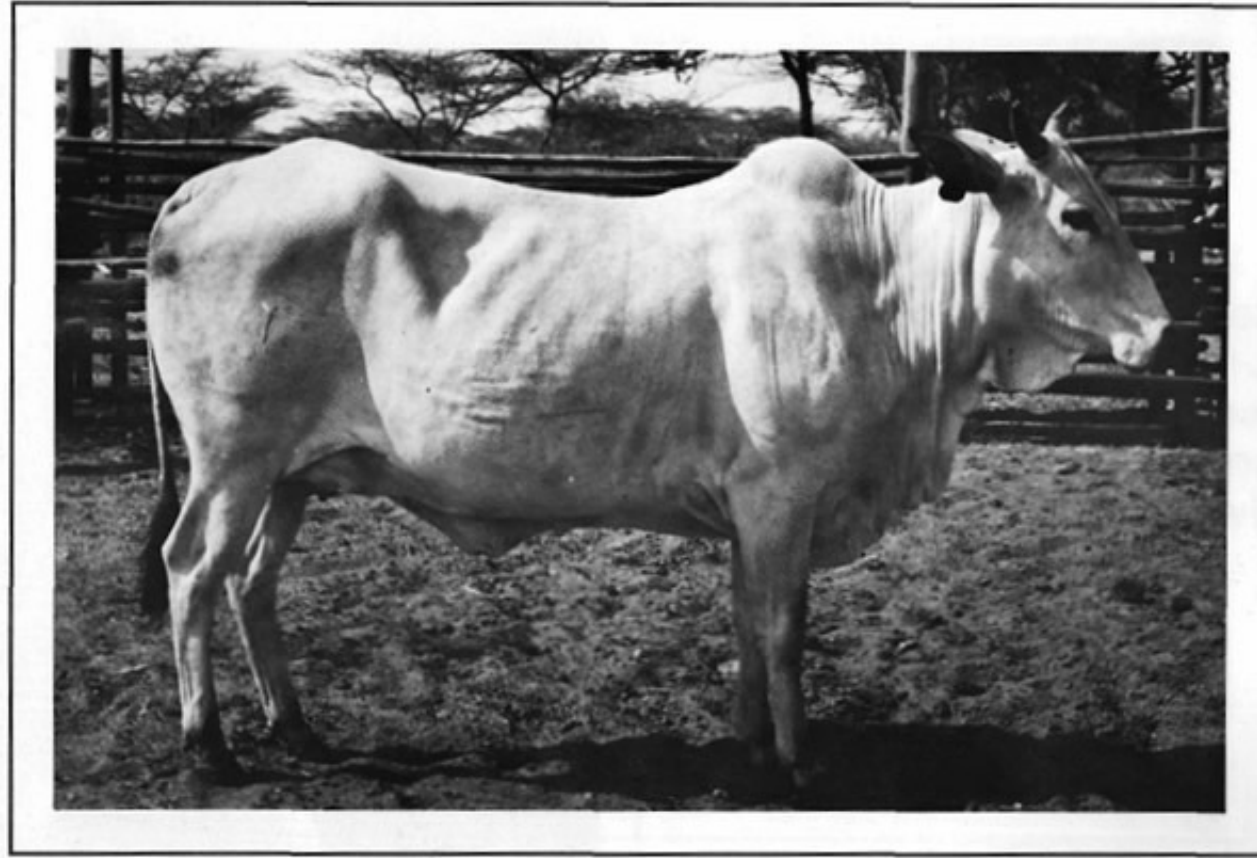
A GUIDE TO CONDITION SCORING OF ZEBU CATTLE

Figure 6

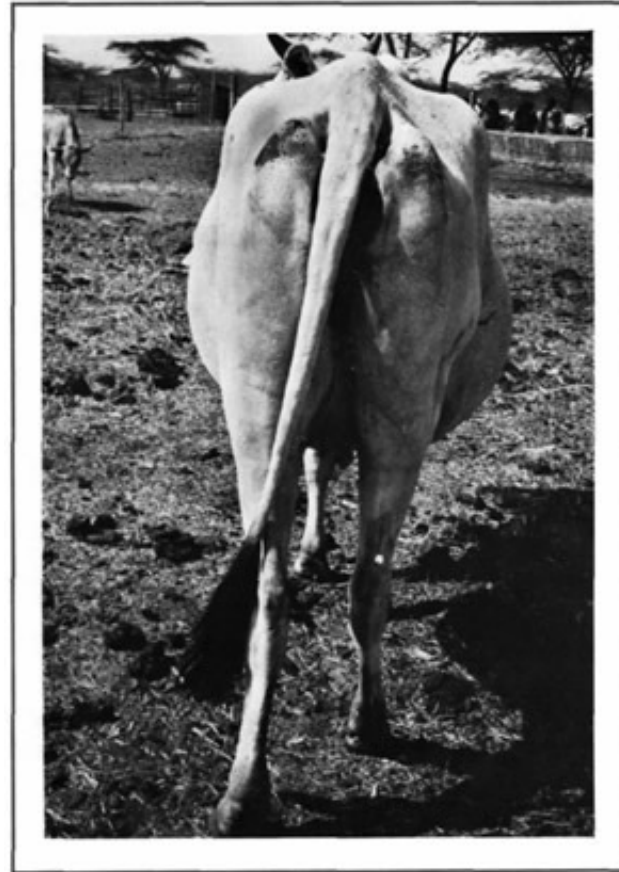
M

The deep sublumbar fossa is indicative of low rumen contents,
not poor condition as the animal is well fleshed

A



B



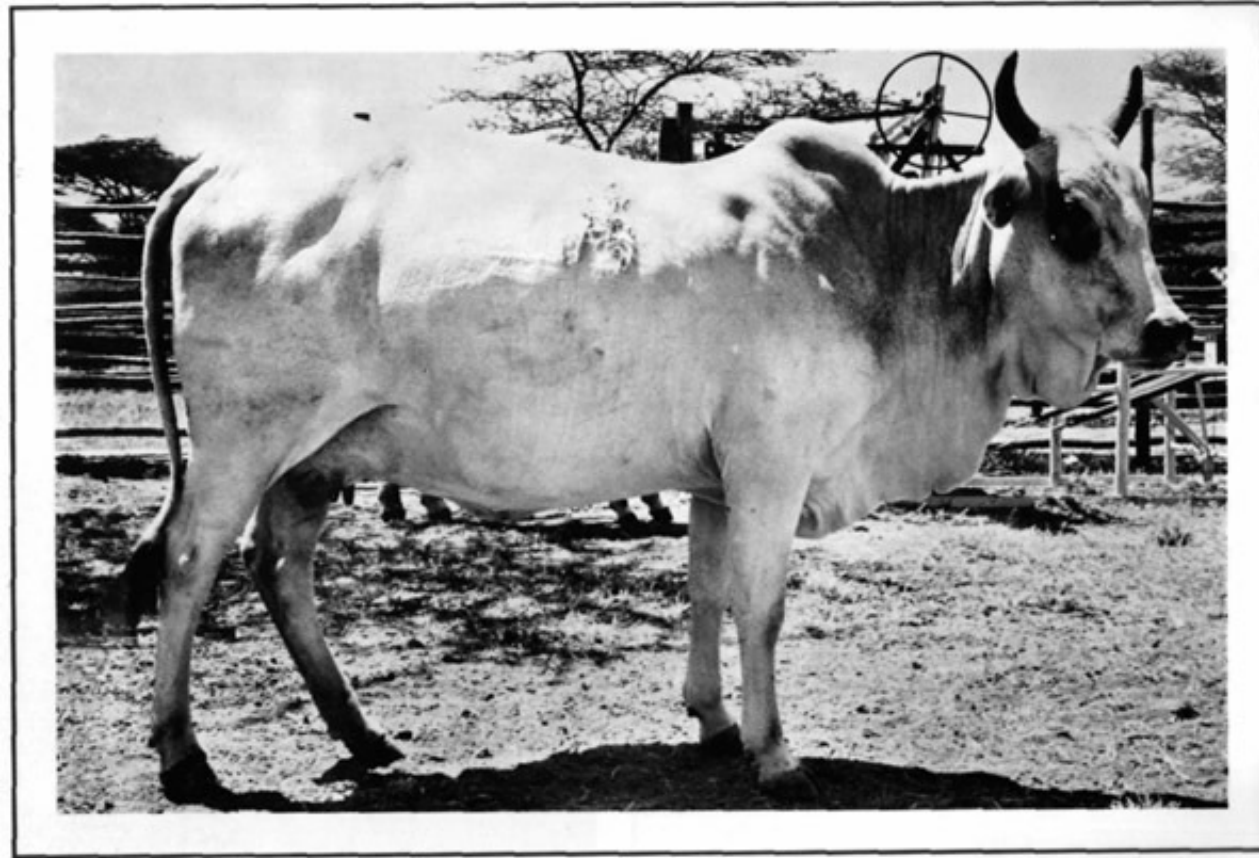
A GUIDE TO CONDITION SCORING OF ZEBU CATTLE

Figure 7

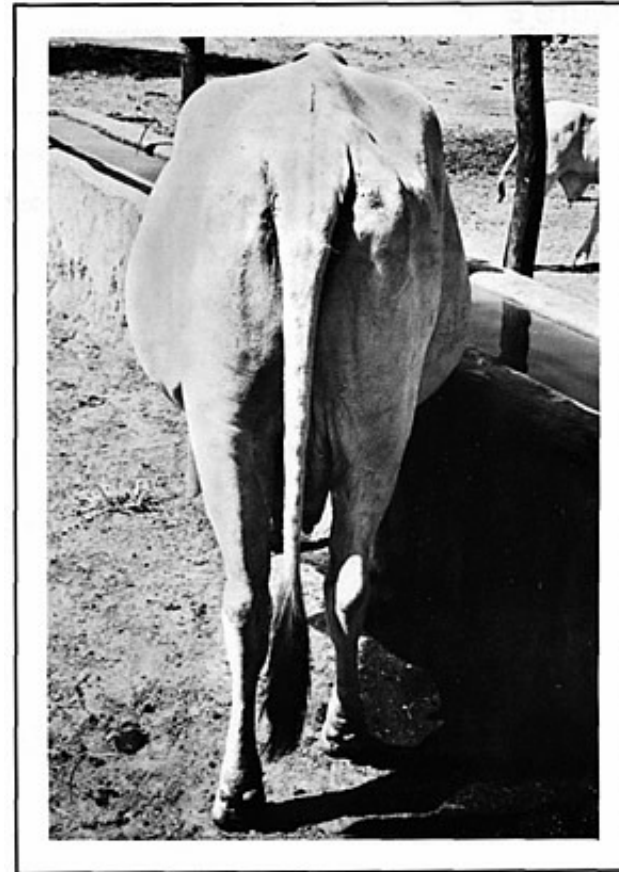
M+

Note the marked increase in fleshing as compared to M.
The hooks are invisible.

A



B



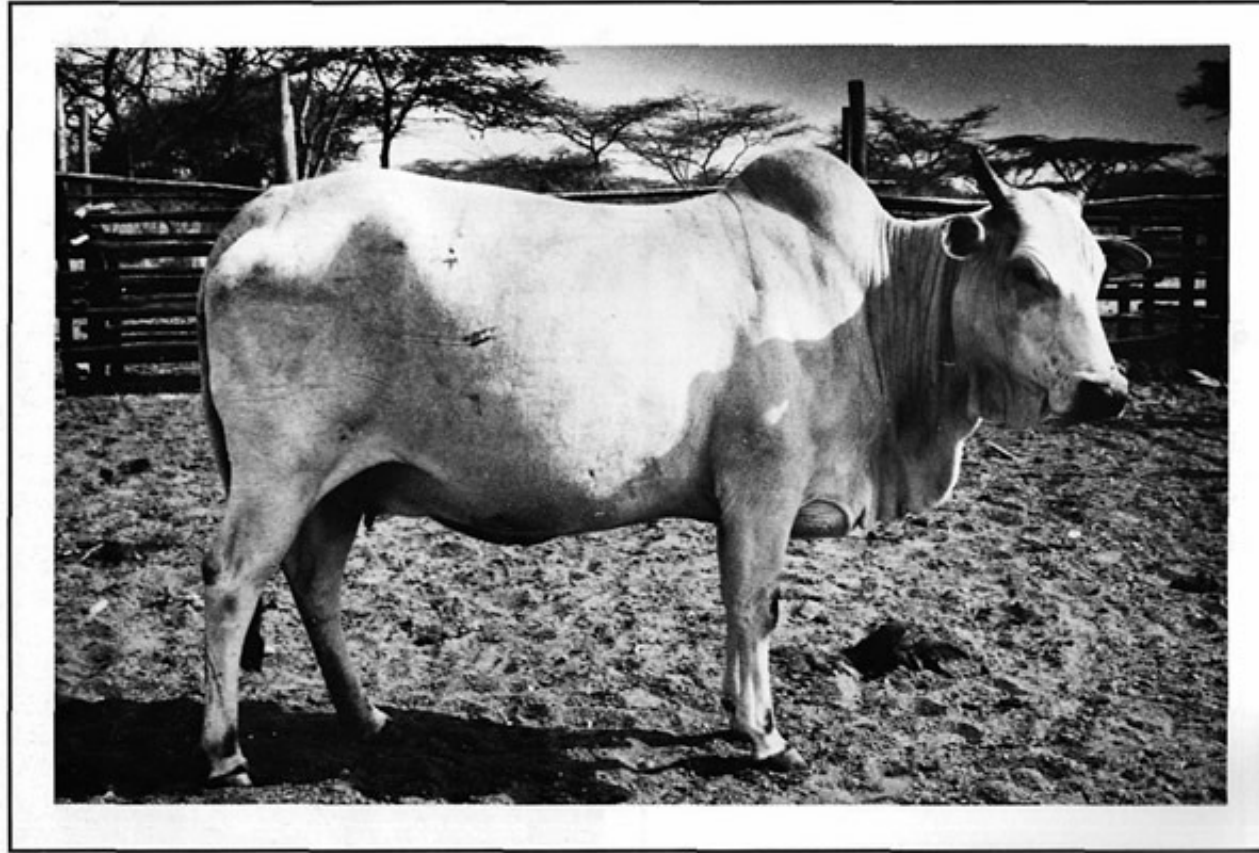
A GUIDE TO CONDITION SCORING OF ZEBU CATTLE

Figure 8

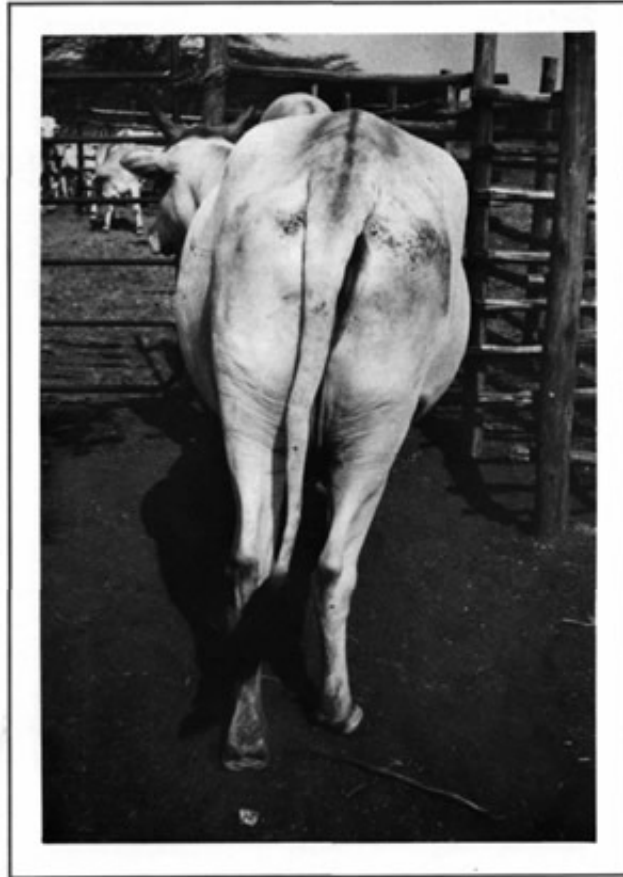
F-

Note the full hump;
animal is well covered with flesh and has some fat deposits

A



B



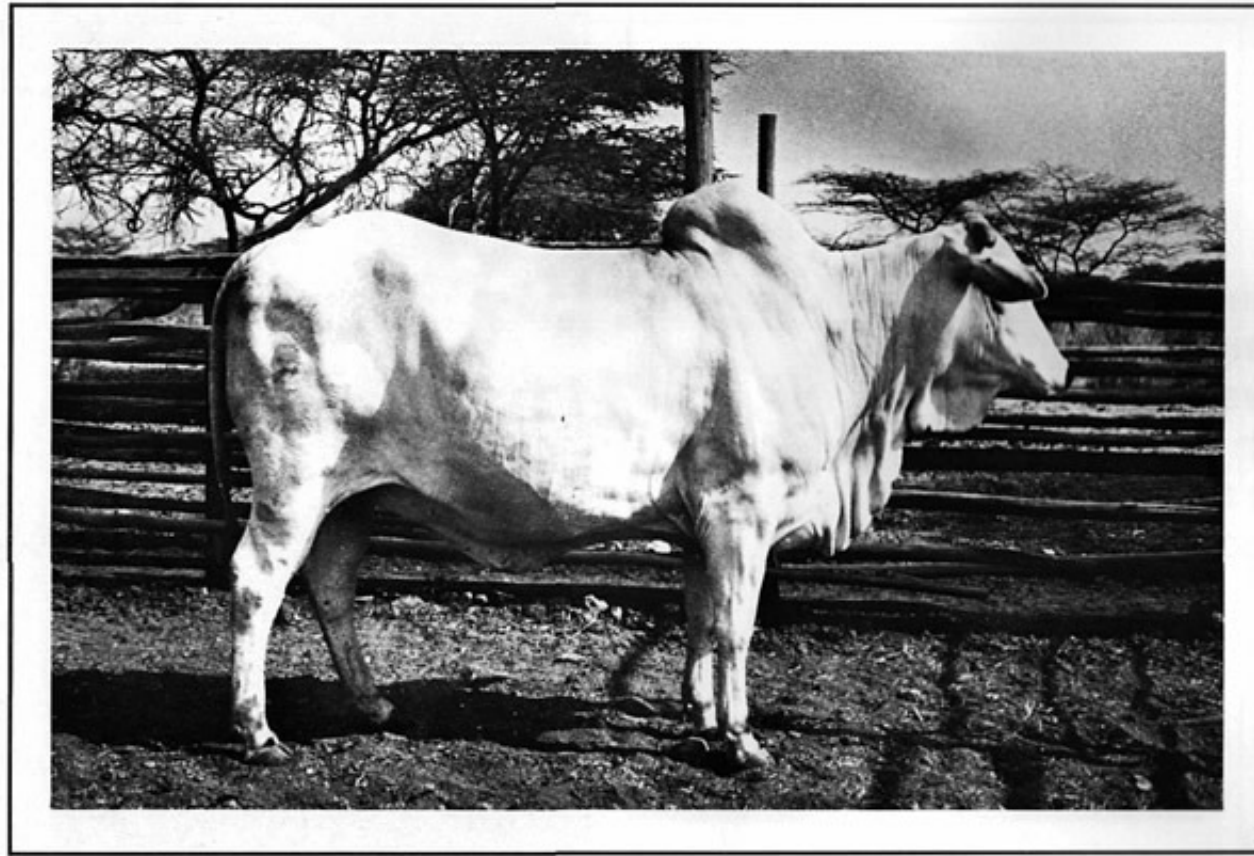
A GUIDE TO CONDITION SCORING OF ZEBU CATTLE

Figure 9

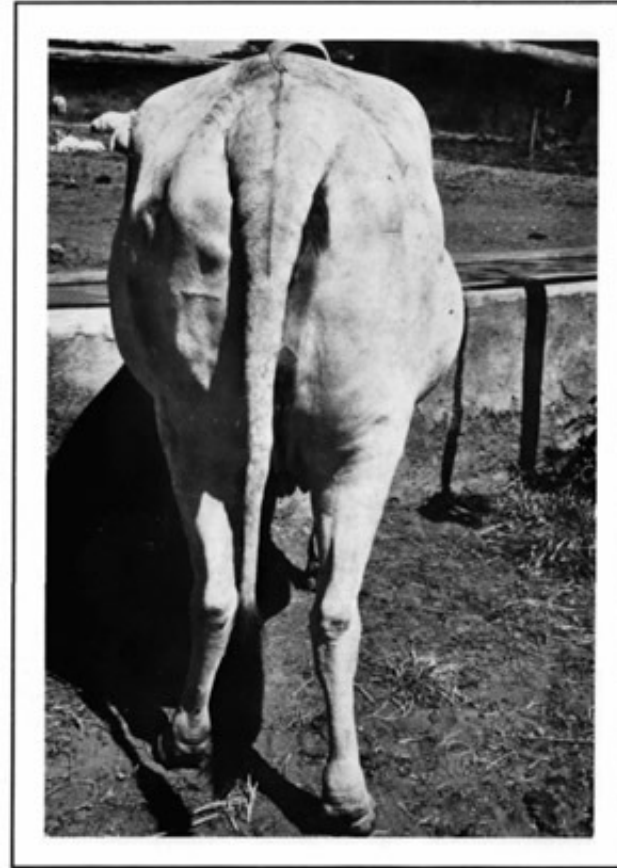
F

Good fat cover

A



B



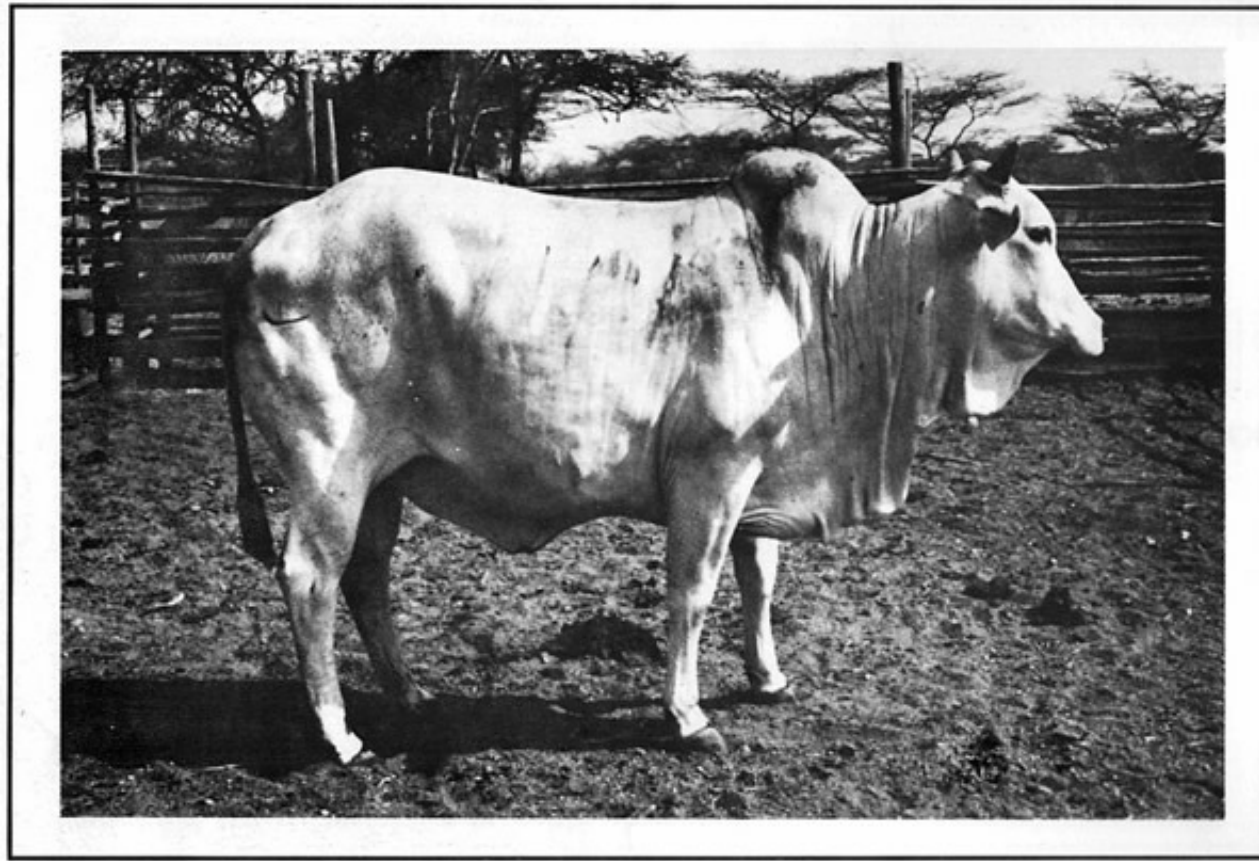
A GUIDE TO CONDITION SCORING OF ZEBU CATTLE

Figure 10

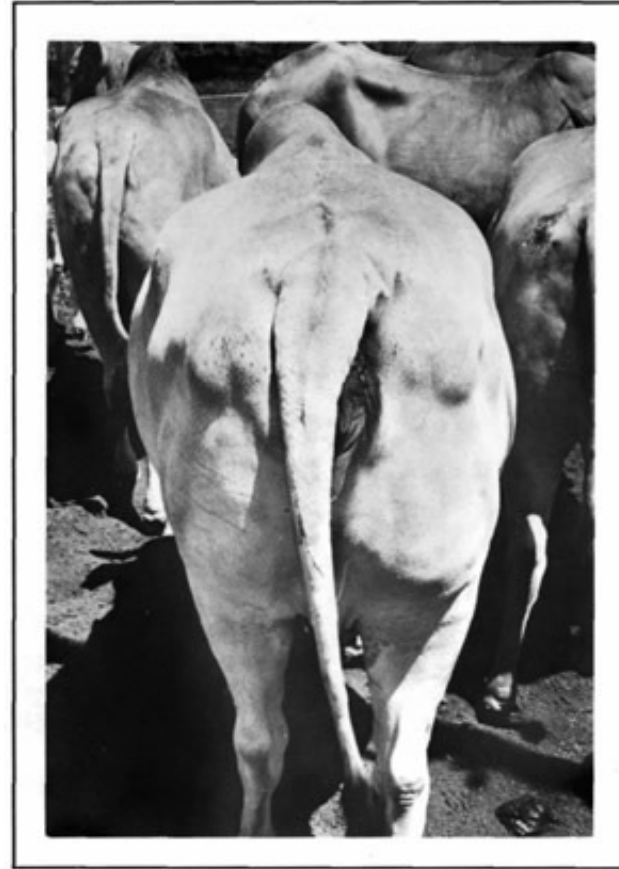
F+

Animal has heavy deposits of fat on tail-head, brisket and cod.

A



B

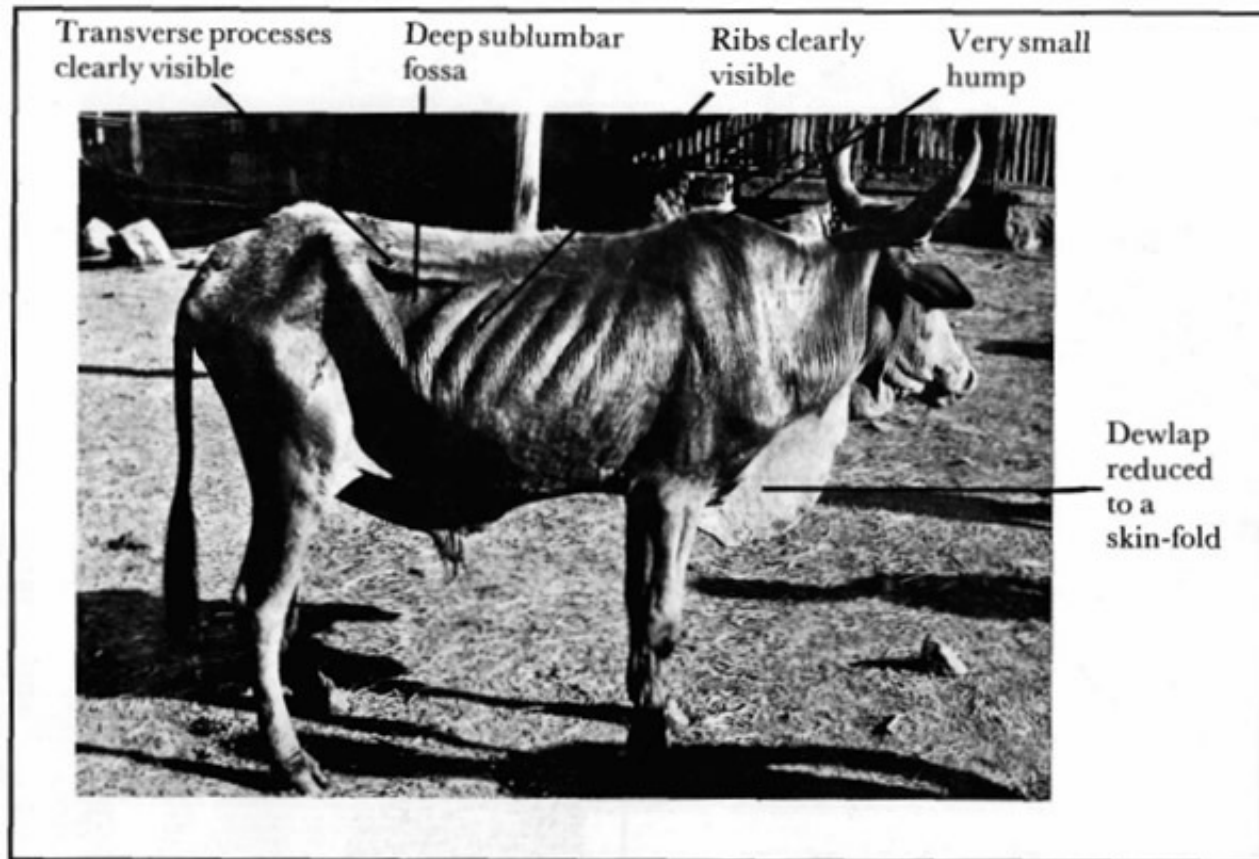


A GUIDE TO CONDITION SCORING OF ZEBU CATTLE

Figure 11

An emaciated steer

A



B

