

**About the National Center for Appropriate Technology's
Organic Integrated Pest Management Field Guide**

File Formats

This CD contains both Spanish and English versions of the IPM Field Guide in pdf format. For your convenience, we've made two different sizes, small and large, of these pdf documents in each language.

The "small" pdf versions are relatively small files, all less than a megabyte (MG). They will download more quickly and can be more easily emailed than the "large" versions. The "small" pdf files provide good print quality, however.

The “large” versions are higher resolution and will print more clearly. The files are much larger and — depending on your computer systems — download and transfer slowly. These are for high-quality printing jobs.

Printing the Field Guides

We recommend that you print these on a color printer and laminate the pages (1 & 2 back-to-back, 3 & 4 back-to-back, 5 & 6 back-to-back, etc.). Then punch holes in the top left corners of the odd-numbered pages and attach them together with a ring or wire so you can use them in the field.

**For further information call 1-800-346-9140.
ATTRA www.attra.org**

Organic Integrated Pest Management

How to Avoid Problems

Good Pest Management is Based on Healthy Soils

- Healthy soils contain many different organisms that compete with pest organisms, keeping them in check
- Having a variety of flowering plants on the farm provides food — pollen & nectar — and refuge for numerous beneficial insects.



Healthy soils contain many organisms that feed & protect plants.

Maintain the Diversity and Fertility of the Soil

- By using compost
- By planting cover crops and green manures
- By rotating crops in the field

Healthy soil protects and feeds plant roots. The plant on the left grew in better soil.



It's Important to Care for the Beneficial Organisms Both Above and Below the Soil Surface.

Keep a diversity of plants in the field to feed and shelter the beneficial organisms that help fight pests.



Tachinid parasitic fly on California buckwheat



Perennial native hedgerow



Flowering annuals in crop rows



Ladybugs overwintering in deergrass



First year perennial hedgerow

2 Providing Habitat for Beneficial Organisms

Keeping a diversity of plants on the farm helps with pest control

Hedgerows and Plant Habitat Provide:

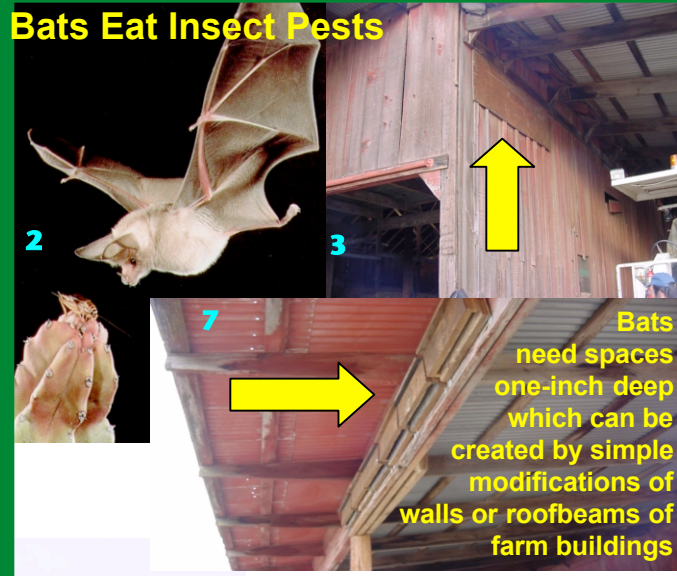
- Habitat for beneficial organisms and wildlife
- Windbreaks to slow erosion
- Dust barriers
- Pesticide barriers between conventional and organic fields
- Protection from soil loss by water erosion

- Food, fruit, nuts, & aromatic herbs
- Beautiful landscape

Flowering annual plants attract beneficial insects



- Bats are nocturnal, like the moths (armyworm and cutworm adults) that plague many crops.
- One colony of bats can consume as many as 100,000 insects — such as cucumber beetles and moths— in a single season.



6 Trees and bushes offer protection from the wind, and perches for birds that eat insect pests



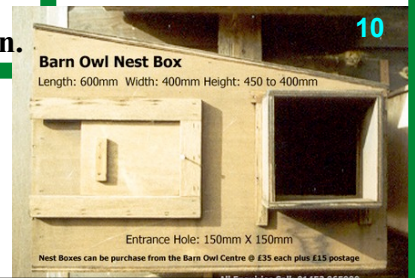
8 Perennial hedgerow



Or planted around a water source



9

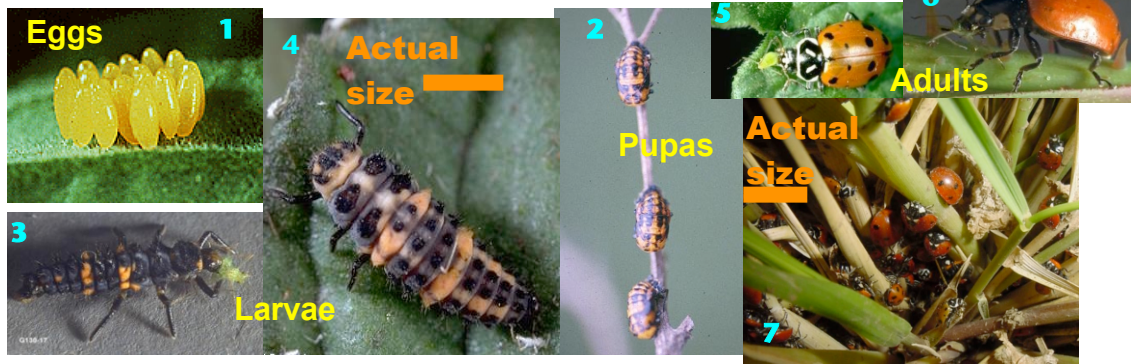


10

Nest boxes can be made for owls. These night hunters eat many insects and rodents.

Protect these Beneficial Insects that Eat Insect Pests!

Life Cycle of Lady Bugs



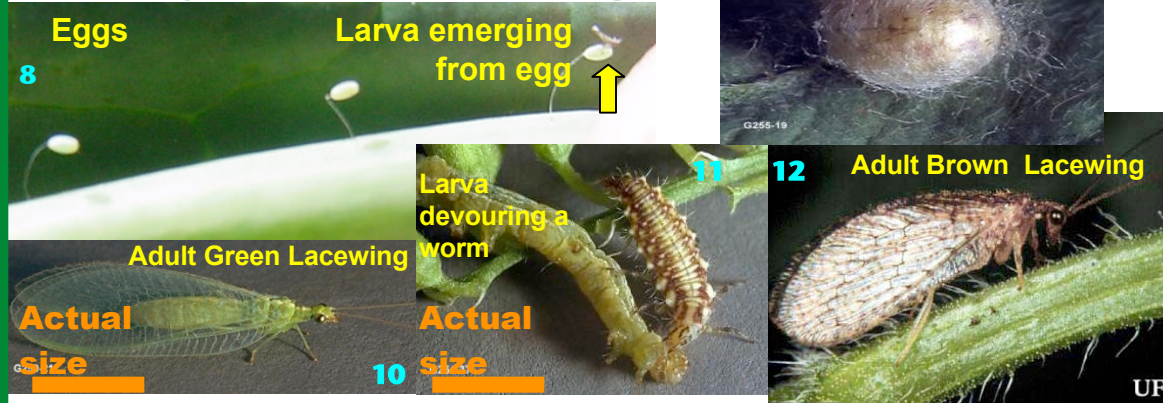
What do they eat?

Larvae & adults eat:
 Aphids
 Mealy bugs
 Mites
 Soft scale
 Eggs of insect pests.

Where do they live?

In plants of the carrot family — fennel, dill, Queen Anne's lace.
 Also yarrow and sunflowers.
 Deergrass and other clumping grasses are excellent habitats for overwintering ladybugs.

Life Cycle of Lacewings



What do they eat?

The larvae eat soft-bodied insects including aphids, thrips, mealy bugs, soft scale, worms, and mites.
 The adults eat pollen & nectar.

Where do they live?

In plants of the carrot family — fennel, dill, Queen Anne's lace. Also yarrow, sunflowers, buckwheat, California buckwheat, corn, amaranth, holly leaf cherry, Alyssum, coyote brush.

Life Cycle of Syrphid Flies



What do they eat?

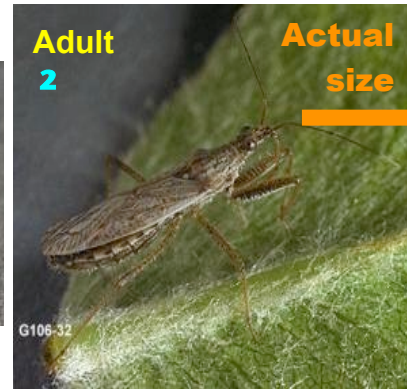
The larvae eat aphids.
 The adults eat pollen & nectar.

Where do they live?

In plants of the carrot family — fennel, dill, Queen Anne's lace.
 Also yarrow, sunflower, buckwheat, Alyssum, coyote brush, and other flowering plants.

Protect these Beneficial Insects that Eat Insect Pests!

Life Cycle of Damself Bugs



What do they eat?

Nymphs & adults eat:
 Aphids
 Mites
 Thrips
 Worms
 Lygus bugs
 Leafhoppers

Where do they live?

Yarrow
 Alfalfa
 Goldenrod

 Plants of the sunflower family.

Life Cycle of Big-Eyed Bugs



What do they eat?

Nymphs & adults eat many insects including:
 Aphids
 Mites
 Thrips
 Worms
 Flea beetles
 Insect eggs

Where do they live?

Cool season cover crops (berseem clover & subterranean clover) and common knotweed

Tachinid Flies



Trichopode pennipes (Big Foot Fly), a parasite of squash bugs.

What do they eat?

The larvae parasitize many worms, Japanese beetles, and some bugs.
 Adults eat pollen & nectar.

Where do they live?

In plants of the carrot family — fennel, dill, Queen Anne's lace. Also yarrow, sunflowers, buckwheat, alyssum, coyote brush.

Protect these Beneficial Insects that Eat Insect Pests!

Life Cycle of Pirate Bugs



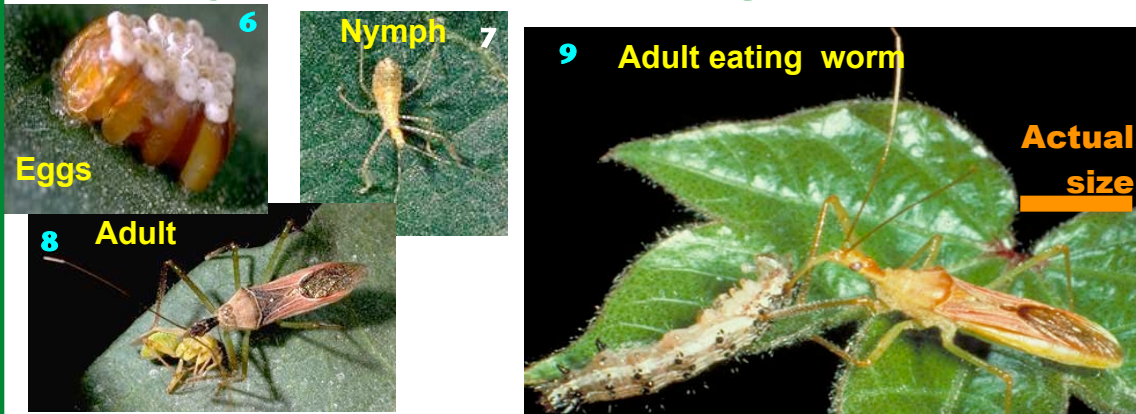
What do they eat?

Nymphs & adults eat:
Thrips
Mites
Leafhoppers
Small worms
Insect eggs

Where do they live?

In plants of the carrot family — fennel, dill, Queen Anne’s lace.
Also yarrow, sunflowers, buckwheat, alyssum, coyote brush, alfalfa, corn, clover, & vetch.

Life Cycle of Assassin Bugs



What do they eat?

Nymphs & adults eat:
Many insects including large insects and worms

Where do they live?

In permanent plantings such as hedgerows, which provide shelter and food.

Spiders

Jumping Spider



Actual size



Wolf Spider



Crab Spider



Ground Spider

What do they eat?

Spiders eat a great variety of pests, including aphids, flea beetles, cucumber beetles, leafhoppers, & many others.

Where do they live?

One of the best ways to increase the number of spiders is to use straw mulch and maintain undisturbed habitat strips, such as hedgerows.

For more information, call us toll-free at ATTRA: 1-800-346-9140

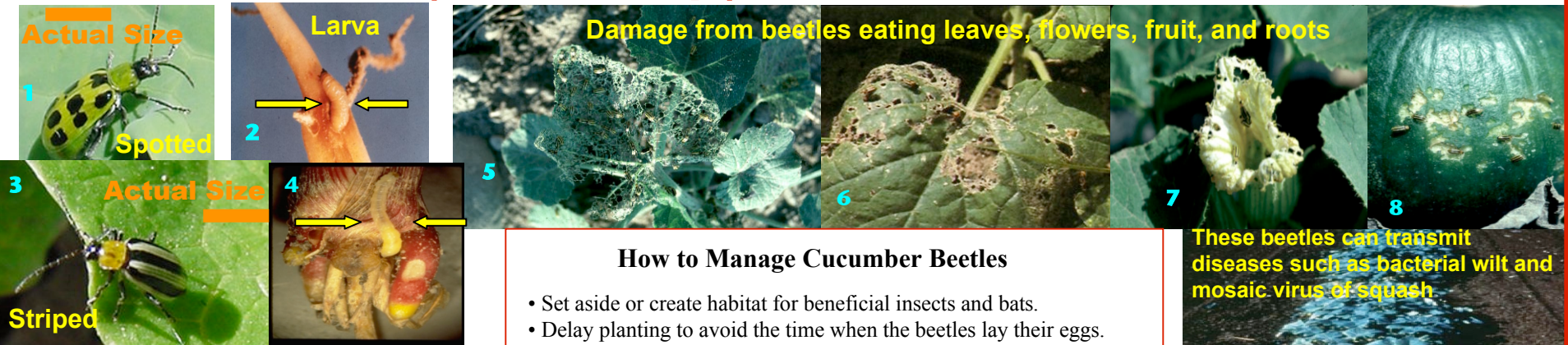
Important Insect Pests

Why Is It Important to Understand the Life Cycles of Pests?

1. To understand what these insects are like in all phases of their life cycles. Many juveniles do not look at all like the adults and can live in completely different kinds of places.
2. To understand the various stages and forms that these insects take, and to manage the places they live — whether on the undersides of leaves, in the soil, or other locations—to decrease their populations.
3. To manage the insects by varying planting dates, and using trap crops, and sticky traps.

Cucumber Beetles (*Diabrotica sp.*)

Damage Caused by Cucumber Beetles



How to Manage Cucumber Beetles

- Set aside or create habitat for beneficial insects and bats.
- Delay planting to avoid the time when the beetles lay their eggs. (Beware: this could cause you to miss an early marketing window.)
- Use row covers or paper cones to protect the young plants. (Beware: this may interfere with weeding.)
- Thick mulch prevents pest insects from laying their eggs in the soil at the base of the stems.
- Trellis the plants to get them up off the ground.
- Cultivate and eliminate crop residues.
- Monitor the pest populations twice a week when the plants have less than five leaves: Check five plants in five different parts of the field. If you find more than five beetles per plant, some treatment is called for.
- Use trap crops, bait, and sticky traps.
- Consider using protective substances and organically approved insecticides.
- Be aware that the following varieties are extremely susceptible to damage:
 - Zucchini*: all varieties.
 - Other squash*: Cocozelle, Caserta.
 - Butternut Squash*: Early Butternut, Waltham.
 - Buttercup*: Honey Delight, Buttercup Burgess, Ambercup.
 - Pumpkins*: Happy Jack, Big Max, Baby Boo.

These beetles can transmit diseases such as bacterial wilt and mosaic virus of squash.

Preferred Hosts of Cucumber Beetles

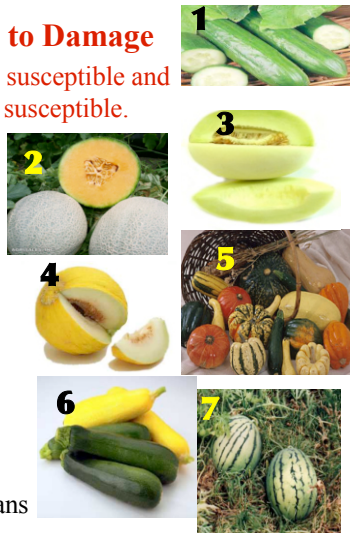
Most Susceptible to Damage

Number one is highly susceptible and number seven is least susceptible.

1. Cucumber
2. Cantaloupe
3. Honeydew Melon
4. Casaba Melon
5. Winter Squash
6. Summer Squash
7. Watermelon

Also:

- Corn • Potatoes
- Tomato • Fruit • Beans
- Cabbage • Lettuce



Grow Crops

These Beetles Don't Eat

Try to grow the varieties that are LEAST attractive to cucumber beetles:

Summer Squash

Yellow Squash: Sunbar, Slender Gold
Straightneck: Seneca Prolific, Goldbar.
Crookneck: Yellow Crookneck
Scallop: Peter Pan

Winter Squash

Acorn: Table Ace, Carnival, Table King
Pumpkins: Baby Pam, Munchkin

Important Insect Pests

Lygus Bugs

Crops Affected by Lygus

Methods of Controlling Lygus



- Strawberries
- Green Beans
- Cotton
- Lettuce
- Dry Beans
- Alfalfa
- Fruit

- Create habitat for beneficial insects
- Eliminate weeds
- Monitor plantings for beneficial insects
- Plant trap crops (alfalfa & radish)
- Botanical pesticides as a last resort

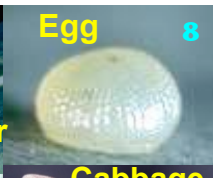


Beneficial Organisms that Attack Lygus

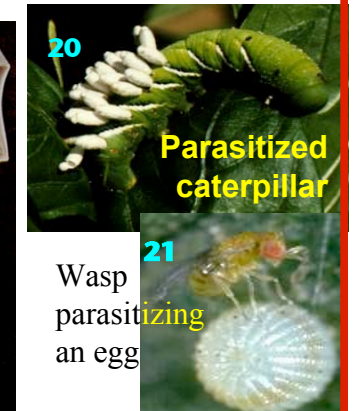
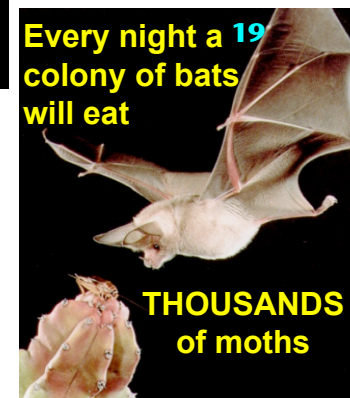
- Fungus: *Beauveria bassiana* (Mycotrol™)
- The parasitic wasps *Anaphes ioles* & *Peristenus sp.*
- Damsel Bugs, Big-Eyed Bugs, Assassin Bugs, Lacewings, Spiders

Caterpillars of Moths & Butterflies

Methods of Controlling Caterpillars

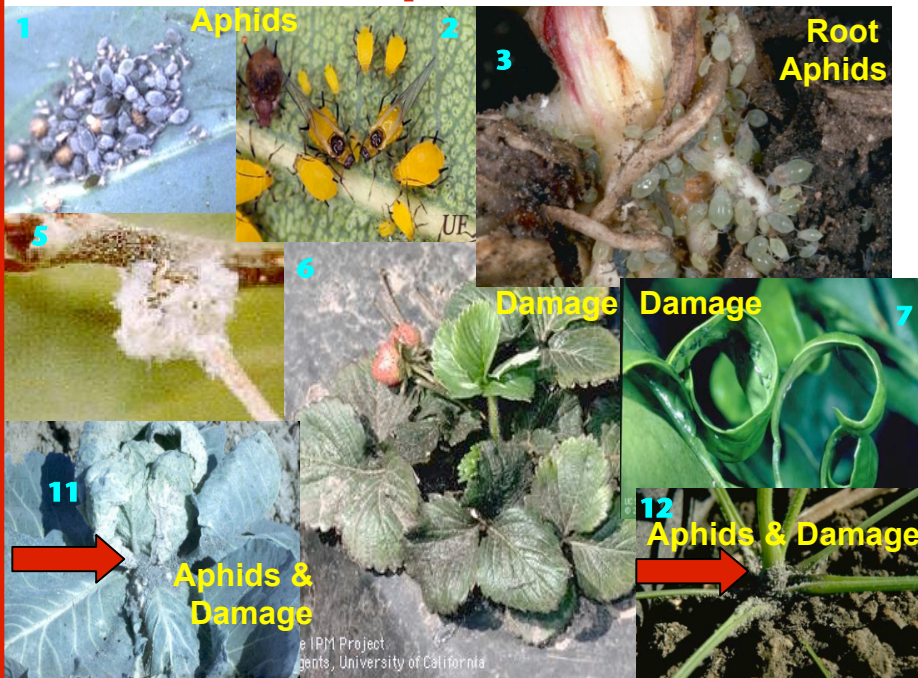


- Create habitat for beneficial predators and parasites
- *Bacillus thuringiensis* (Bt)
- Botanical pesticides
- Repellents: dilute garlic, onion or chilis with water
- Pheromones



Important Insect Pests

Aphids

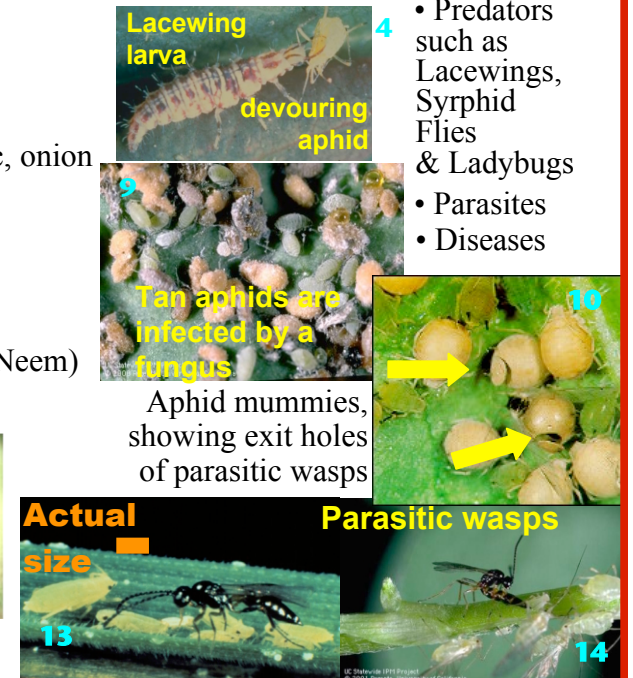


Methods of Control

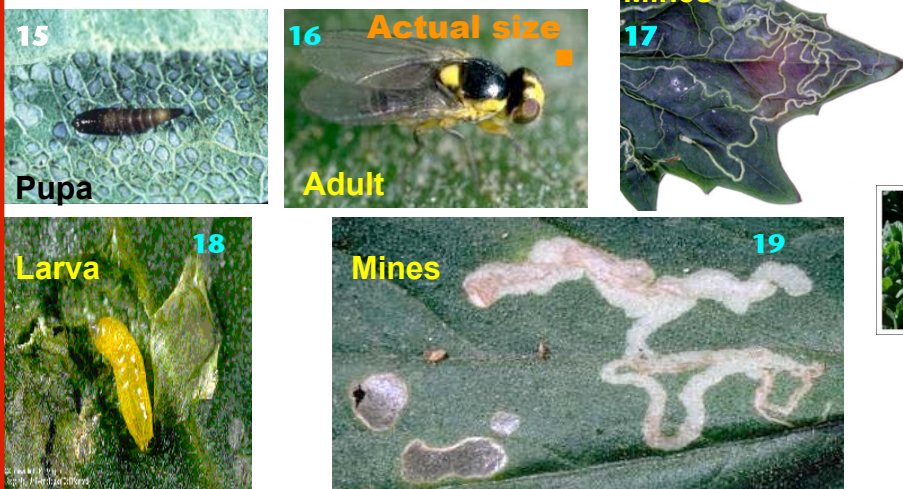
- Create habitat for beneficial insects
- Control ants
- Repellents: Dilute garlic, onion or chilies with water
- Insecticidal soaps
- Diatomaceous earth
- Vegetable oils
- Botanical Insecticides (Neem)
- Physical (water sprays)

Natural Enemies

- Predators such as Lacewings, Syrphid Flies & Ladybugs
- Parasites
- Diseases



Leaf Miners



Some Affected Crops



Methods of Control

- Parasitic wasp (*Diglyphus isaea*)
- Row covers
- Don't plant next to infected crops
- Use botanical pesticides (on adults)
- Use "Neem" (for larvae)
- Use sticky traps
- Sanitation
- Mulches

Important Insect Pests

Mites



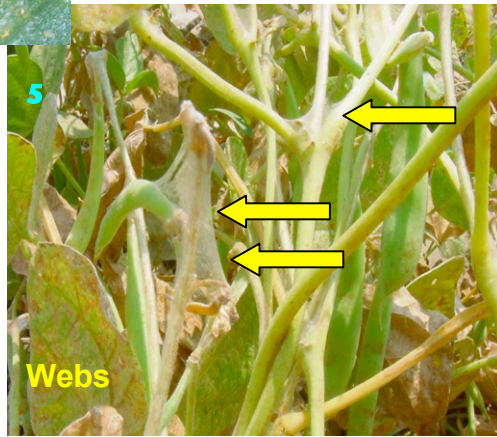
Affected Plants

- More than 300 host plants
- 100s are cultivated crop plants
- Strawberries, cotton, peppers, chiles, tomatoes, tree fruit, & various ornamental plants

Biological Control of Mites



- Beneficial Mites
- Predators:
 - Pirate Bugs & Big-Eyed Bugs
 - Lacewings
 - Thrips
 - Ladybugs



Other Controls for Mites

- Sulfur
- Soaps
- Vegetable Oil
- Citric Acid or Lemon Juice
- Some Botanical Insecticides

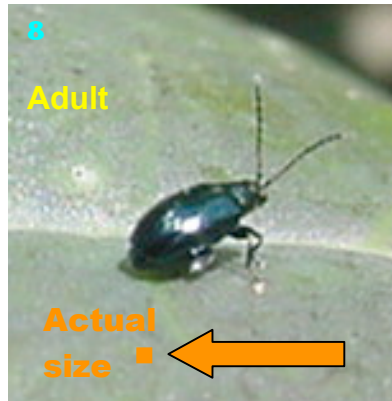


Predatory mite attacking spider mite

Cultural Controls for Mites

Flea Beetles

They jump like fleas and chew numerous holes in plant leaves. They can transmit diseases.



Controls

- Row covers
- Beneficial nematodes
- Sticky traps located every 15 to 30 feet along the rows
- Repellents: Dilutions of garlic, onion, or chilies with water
- Botanical Insecticides

The most important practice: Eliminate dust by...

- Creating hedges and windbreaks between roads and fields
- Using cover crops or mulches and leaving crop residues after harvest
- Wetting down roads
- Giving crops sufficient moisture
- Using sprinkler irrigation
- Planting cover crops

Remember to apply only materials accepted by your certifier!



Plant Diseases



Fungal Damage: Botrytis



Fungal Damage: Powdery Mildew



Viral Damage: Cucumber Mosaic

What causes diseases in plants?

Many times they are caused by microscopic organisms such as:



Fungi

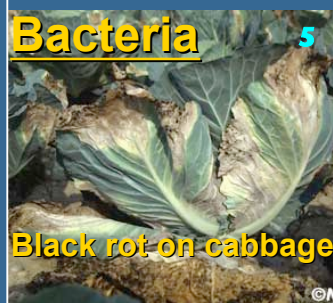
Fungi cause soil-borne diseases such as:

- Damping off
- Root rots

Fungal Damage

They cause diseases above ground on the plant such as:

- Powdery Mildew—squash and cucumbers
- Downy Mildew—lettuce and spinach
- Botrytis—strawberries and grapes



Bacteria

Black rot on cabbage



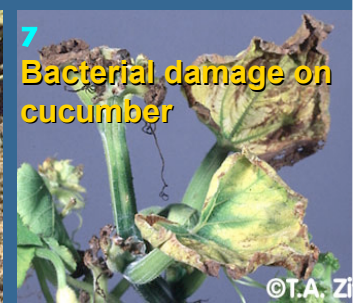
Bacterial wilt transmitted by

the cucumber beetle

- Resistant varieties
- Crop rotation
- Nutrient management

Prevention of bacterial diseases

- Sanitation; removal of prunings



Bacterial damage on cucumber

- Some copper fungicides
- Irrigation management
- Spacing, air circulation.



Virus

Viral symptoms on lettuce

Virus examples

- Tobacco mosaic virus
- Cucumber mosaic virus
- Lettuce Big Vein virus



Viral damage on beans

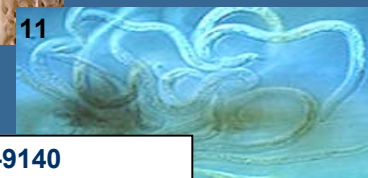


Nematodes

Root nodules caused by nematodes

Worm-like microscopic animals that live in soil and water. Some are parasites to animals and plants but most are beneficial.

Nematodes are only visible by microscope.



An ounce of prevention is better than a pound of cure. How to prevent plant diseases.

CULTURAL PRACTICES THAT STRENGTHEN YOUR CROPS



**Good drainage:
Don't let water stand in
your field**



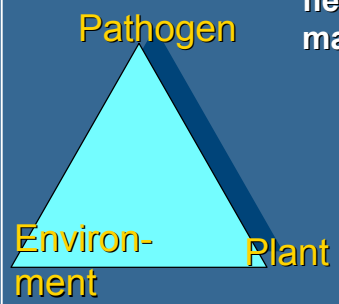
**Drip irrigation
provides desired
amounts of water and
nutrients,
keeping the foliage
dry and preventing
diseases.**



Good air flow between plants



- Sanitary practices that exclude or remove pests (or residues that may contain pests) from the field or orchard.
- Selection of well-adapted varieties that are resistant to pests.



When pathogens are present in the field, damage can be reduced by manipulating one of these three points:

1. Strengthen the plant: use resistant cultivars, manage for healthy soil
2. Make environment friendlier to plant or less friendly to pathogen
3. Reduce pathogen load (crop rotation & sanitation)

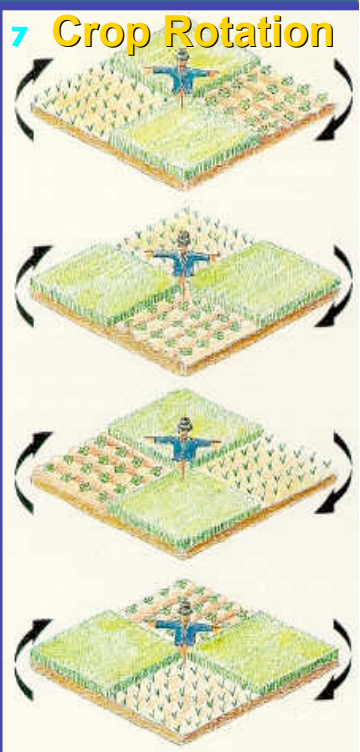
SOIL MANAGEMENT: CROP ROTATION AND GOOD NUTRIENT MANAGEMENT



Crop Diversity



The wheat crop on the left followed cotton. The wheat on the right followed wheat.



12 Sclerotinia or White Mold

This disease is caused by a soil fungus and its symptoms are a moist rot covered by white cottony mycelium.



Controls for Sclerotinia

- Resistant varieties
- Drip irrigation
- Rotate with grains and other grasses
- Control weeds and increase air circulation
- Solarization with clear plastic (warm inland areas)
- Biological control options:
 - Serenade®
 - Intercept®

Powdery Mildew

- Caused by one or two fungi: *Erysiphe* sp. and/or *Sphaerotheca* sp.
- These fungi primarily infect leaves & stems of cucumber, squash, melon & watermelon plants .
- Damage consists of weakening & killing the plants.



Control Options for Powdery Mildew

- Resistant varieties
- Plant in full sun with good drainage
- Don't crowd plants (this reduces air circulation)
- Don't over fertilize
- Cull infected plants or prune infected plant parts
- Irrigate in the morning
- Sulfur (garlic)
- Vegetable oil
- Bicarbonate of soda recipe:
 - 4 Tbls/ gallon of water
 - 8 drops of liquid soap per gallon
 - 4 Tbls hydrogen peroxide per gallon
- Compost teas
- Yeast & sugar solutions
- Milk (10% milk/water mix or more by volume)
- Biological Controls:
 - *Ampelomyces quisqualis*
 - Serenade®

Diseases: Mosaic Virus



Prevention

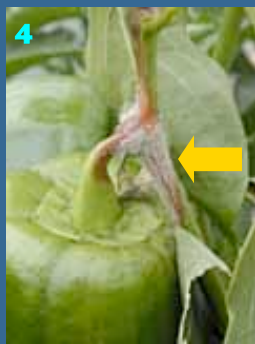
- Control insects that vector the virus (aphids)
 - Harvest by hand (without a knife that transmits the virus from plant to plant)
 - Wash hands
- Do not smoke

There are no controls

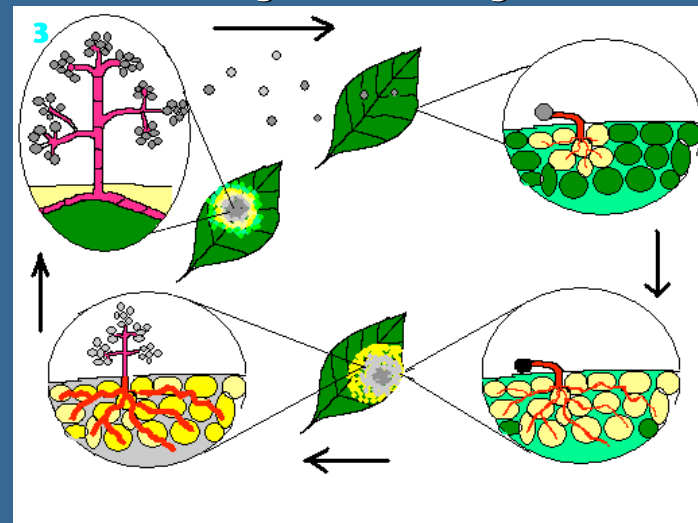
Botrytis or Gray Mold

Botrytis Life Cycle

Botrytis Management Options:



Botrytis is a fungus that rots stems, buds, leaves, flowers and fruit.



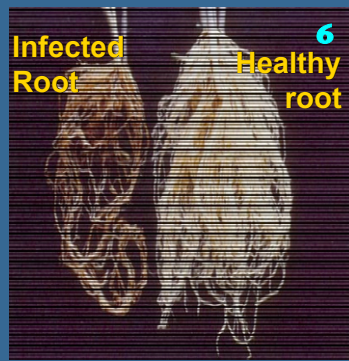
Botrytis attacks numerous crops: flowers, strawberries, raspberries, grapes, apples, cherries, kiwis, pears, lettuce, asparagus, onions and many others.

Botrytis infects through wounds, preferring new tender succulent growth of stems and leaves.

- Avoid wounding plants
- Good water, drainage & fertilization management
- Good ventilation (plant spacing & leaf thinning in vineyards)
- Crop rotation
- Cull infected plants & prune plant parts
- Bicarbonate of soda
- Compost tea
- Nettle tea
- Vegetable oil
- Biological controls

Root Nematodes

Nematode Controls



- Resistant Varieties
- Cover Crops:
 - Castor bean
 - Chrysanthemum
 - Sesame and marigolds
- Red plastic mulch
- Solarization

- Botanical Controls:
 - Caraway oil & seed fennel
 - mint or oregano
- Biological Controls:
 - Ditera®
 - Prospernema®
 - Deny®
 - Beneficial Nematode: *Steinernema* sp.

Root nematodes are miniscule eel-like animals less than 1 mm long in the adult stage, only visible with a microscope. They possess a stylet that penetrates cell walls in order to absorb their content. The plant's roots form tiny nodules or cysts that are visible to the naked eye.

For more information call the ATTRA project toll free at 1-800-346-9140



14 Organic Integrated Weed Management

One Year Seeding is Seven Years Weeding



- Remove the weed before it produces seed. It is easier to weed one plant today than 1,000 weeds next year.
- The soil is a reservoir of seeds, a seed bank.

Early weed competition reduces quality and yields

How to Prevent Weed Damage

- Plant clean or certified seed
- Avoid importing manure or compost that has not been well composted or decomposed
- Crop rotation decreases the seeds of weeds that grow well with certain crops

Ground Covers



For more information call the ATTRA project toll free at 1-800-346-9140.

1 Pre irrigation

Before planting, a pre-irrigation followed by a cultivation can reduce weeds.



2 Hand mowers

3 Tractor mowers



4 Transplants give your crop a head start.



5 Hand hoeing weeds

Flamers



8 Solarization

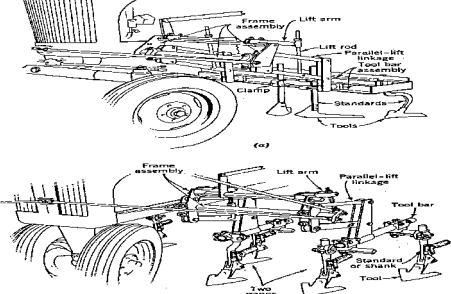
This works better in warm regions. Cover moist soil with 1 or 2 layers of clear plastic for 6 to 8 weeks during the summer. It will sterilize 4 to 6 inches deep, destroying weeds seeds and other pests.

Flamers on Tractors



Organic Integrated Weed Management

1 Mechanical Cultivation



2 Implements

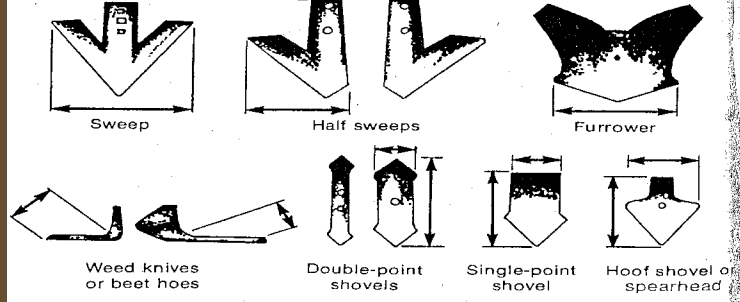


Photo: PAV Lelystad, The Netherlands



Lilliston



Squirrel Cages



Rotary Cultivator



Flexible Tooth Cultivator



Manual Cultivators



8

Weed with Animals



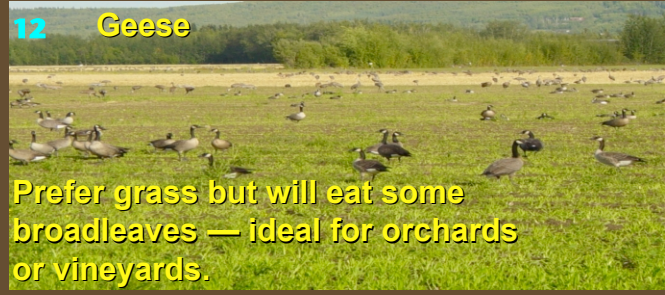
9

Chickens

Chickens graze pastures or clean up after harvest if they are confined to mobile cages known as chicken tractors



10



12

Geese

Prefer grass but will eat some broadleaves — ideal for orchards or vineyards.



11 Sheep

Can be used to clean up fields after harvest



13 Goats

Good for brush & noxious weed management

Gophers

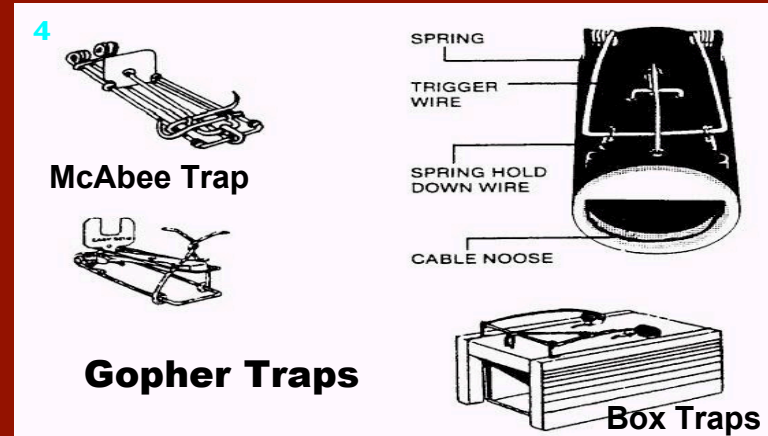
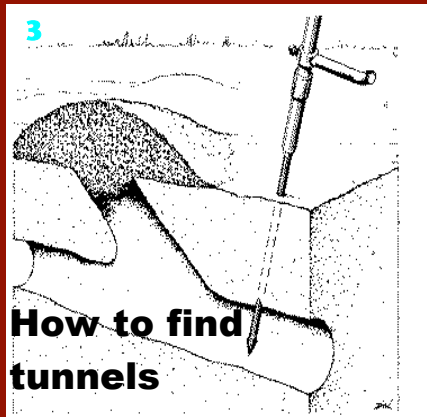


Gopher Controls

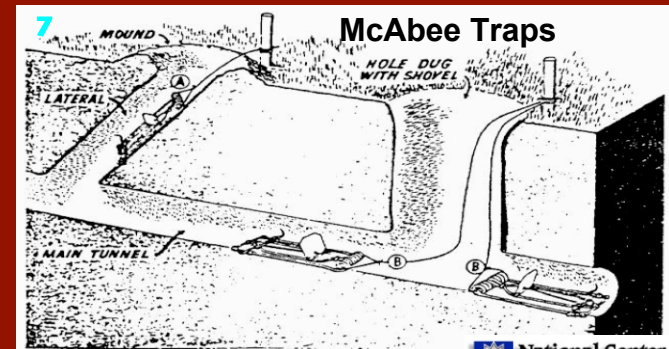
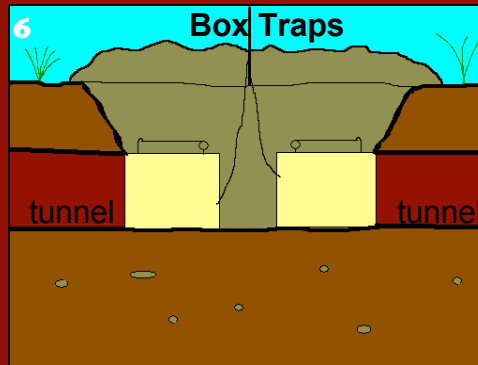
- Exclusion
- Keep areas weed-free
- Traps
- Flooding (if practical)
- Propane gas
- Repellents (non-synthetic)
 - Blood meal
 - Hair
 - Rotten eggs in tunnels
 - Predator scents (urine)
- Vitamin D3 (Cholecalciferol)

PREDATION

- Birds of prey
 - Owls
 - Eagles
 - Hawks
- Coyotes & Foxes
- Snakes
- Dogs & Cats



How to Place Traps



For more information call the ATTRA project toll free at 1-800-346-9140.

Owls hunt many vertebrate pests



PROTECT these nocturnal hunters

An owl can consume 155 gophers per year, and it also eats rats and mice.

A pair of owls can have a clutch of 5 to 6 chicks.

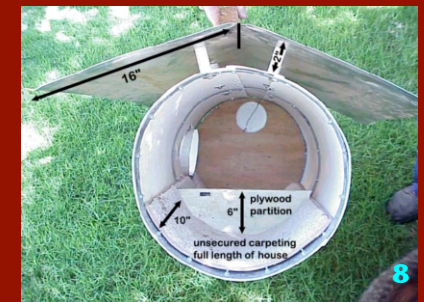
One nest for every 10 acres is needed if the problem is severe, one nest every 20 acres if the pest pressure is average.



PVC nest for owls



Box nests for owls



Owls hunt rodents:

- Gophers
- Rabbits & Jackrabbits
- Ground Squirrels and Tree Squirrels
- Rats
- Mice

For more information call the ATTRA project toll free at 1-800-346-9140.

Squirrels



Squirrel Controls

- Traps
- Repellents
- Remove obstacles like trash, rocks and tree trunks
- Pellet or squirrel gun (use with caution)
- Predators: hawks, owls, eagles, snakes, coyotes, foxes & dogs
- Vitamin D-3 Cholecalciferol

Squirrel Traps



Deer



Deer Controls

- Fencing — electric
- Row covers
- Scare devices
 - Sound
 - Lights
- High powered rifle (use with caution)
- Dogs
- Repellents
 - Rotting meat
 - Soap
 - Hair
- Repellent plants

Feral Pigs



Feral Pig Controls

- Fencing
- Hunting
- Traps
- Dogs



For more information call the ATTRA project toll free at 1-800-346-9140.

Rabbits and Hares



Rabbit & Hare Controls

- Fencing 4 feet high and buried 6 inches
- Traps
- Repellents-egg whites
- Hunting at dawn and dusk (use caution)
- Dogs & cats
- Eagles, hawks and owls
- Coyotes & foxes
- Wild cats & pumas
- Vitamin D3 (Cholecalciferol)

Birds



Nets protect against birds in this vineyard.

Bird Controls

- Scare Devices
 - Sound
 - Lights
 - Mylar tape
- Bird netting
- Row covers
- Repellents
- Shotgun (use with caution)
- Other animals



Scarecrow

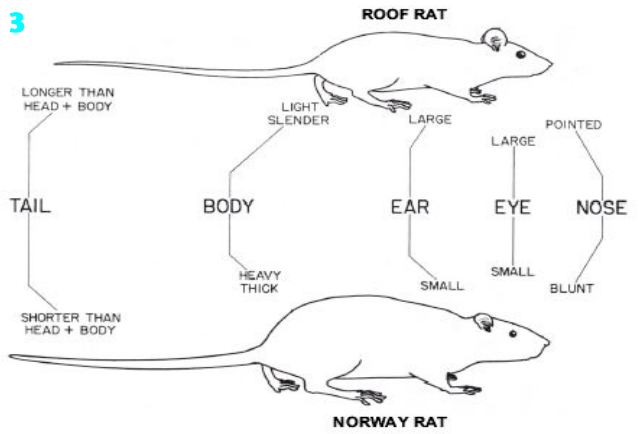
Rats



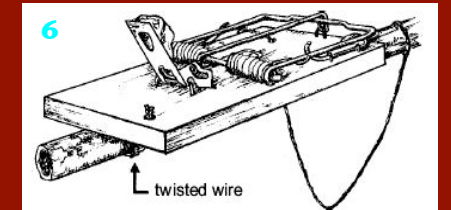
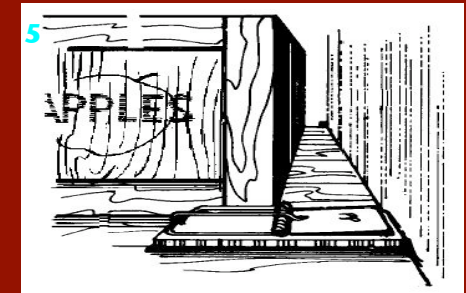
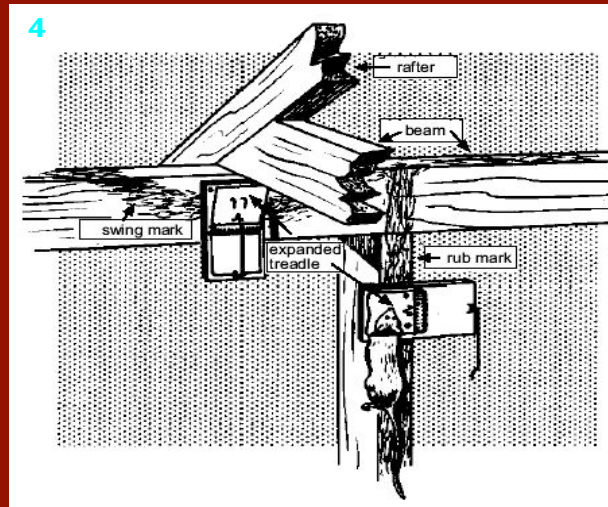
Rat Controls

- Cleanliness & sanitation
- Limit access to homes & warehouses
- Owls
- Cats
- Snakes
- Traps – place baits on trigger, using meat, nuts or dried fruits.
- Vitamin D3 (Cholecalciferol)

Differences between Norwegian rats and roof rats



How to place rat traps



Mice



Mice Controls

- Cleanliness & sanitation
- Eliminate weeds
- Fencing 1 foot high and buried 6 to 10 inches
- Traps
- Repellents
- Coyotes & foxes
- Cats
- Vitamin D3 (Cholecalciferol)
- Hawks
- Owls
- Gulls

For more information call the ATTRA project toll free at 1-800-346-9140.

Organic Integrated Pest Management for Some Agricultural Pests

Adapted from a series of workshops sponsored by
**OFRF (Organic Farming Research Foundation) and
NCAT (National Center for Appropriate Technology)**

by Ann Baier, Rex Dufour, Martín Guereña, Karen Van Epen

Many thanks to the following institutions and individuals
who amiably gave permission to use their photographs

Page 1 — 1: USDA Forest Service, Soil Ecology Society. 2, 3, 6: Rex Dufour, NCAT.
4: Martín Guereña, NCAT. 5: Kasey Dufour. 7: Steve Diver, NCAT.
Page 2 — 1, 3, 4, 5, 6, 7, 8: Rex Dufour, NCAT.
2: <<http://sunsite.tus.ac.jp/multimed/pics/animals/bat.jpg>> 9: www.tu.ac.th/usr/bird/pic17.htm.
10: The Barn Owl Centre of Gloucester, www.barnowl.co.uk. 11: Martín Guereña, NCAT.
Page 3 — 1, 2, 4, 5: UC IPM (University of California Statewide Integrated Pest Management Program,
see below) 3, 6: OSU Potato (Oregon State University *IPM on Potato*, see below)
7: Kasey Dufour. 8, 16: Rex Dufour, NCAT. 9, 10, 11, 13, 14, 15: OSU Mint (Oregon State University
IPM on Peppermint, see below) 12: UFL (University of Florida, see below)
Page 4 — 1, 2, 3, 4, 5, 7: OSU Mint. 6, 8, 9: UC IPM. 10, 11: Rex Dufour.
Page 5 — 1: Unattributed. 2: TAMU (Texas A & M University, see below), (W. Sterling).
3: Mid-Atlantic Orchard Monitoring Guide, copyright 1995 (Photographer: J.P. McCaffrey).
4: OSU Mint. 5: Mark S. Hoddle, Dept. of Entomology, University of California, Riverside.
6, 7, 8: UC IPM. 9: TAMU (W. Sterling). 10, 11, 12, 13, 14: © Department of Entomology, University
of Nebraska-Lincoln (Cangrejo spider: David Keith. Other spiders: Jim Kalisch.)
Page 6 — 1, 3: Rex Dufour, NCAT. 4: TAMU (Drees). 6: University of Georgia.
5, 9: Cornell University Vegetable MD Online (see below) 2, 7, 8, 9: Unattributed.
Page 7 — 1, 3, 5, 7, 8, 9, 10, 13, 14, 17, 20, 21: UC IPM. 2: North Dakota State University.
4, 12, 20: TAMU (W. Sterling). 6: OSU IPM Mint. 16: Ohio State University, www.ag.ohio-state.edu/%7Ebygl/images/enlt/enlt-52.jpeg 18: www.defenders.co.uk/traps.htm.
19: <<http://sunsite.tus.ac.jp/multimed/pics/animals/>>
Page 8 — 1, 5, 15: University of Vermont. 2: UFL (J. Castner). 3, 6, 7, 9, 14, 16, 18, 19, 22: UC IPM.
12: UC IPM (R.F. Norris). 13: IPM of Alaska (Max Badgley, Entomological Photography Ltd).
17: discoverlife.com (John Pickering). 21: UFL (J. Lotz). 23: UC IPM (Earl Oatman).
Page 9 — 1, 2, 3, 7: OSU IPM Mint. 5, 6, 8: Rex Dufour. 9, 10: Unattributed.
Page 10 — 1: www.pv.fagro.edu.uy/fitopato/cursos/fitopato/practicas/3/botrytis03.jpg.
2: UC IPM. 3: Cornell Vegetable MD Online. 5: Cornell University (M.T. McGrath).
6, 7: Cornell University (T.A. Zitter). 8: UC IPM. 9: Cornell University (R. Provvidenti). 10: UC IPM.
11: Sugarbeet cyst nematode juvenile: www.mactode.com (Micael McClure). 12: Lesion nematodes
penetrating a root: www.mactode.com (Ulrich Zunke).
Page 11 — 1, 7: Unattributed. 3: N. Carolina Coop Extension, www.ces.ncsu.edu.
2, 4: Martín Guereña, NCAT. 5: www.wcu.mis.coventry.ac.uk. 6: TAMU (Harold Kaufman).
Page 12 — 1, 4, 6: UC IPM. 2: Ohio State University, <vegnet.osu.edu/reports/pumwk2c.htm>
3: www.bejo.com/images/sclerotinia%20rot.jpg.
5: <http://plant-protection.massey.ac.nz/171_284/cs_notes/learnpst/module3/sclero.htm>
7: University of Arizona. 8: Cornell Vegetable MD Online.
Page 13 — 1: www.pv.fagro.edu.uy/fitopato/cursos/fitopato/practicas/3/botrytis03.jpg.
2: UC IPM. 3: Drawing by Martín Guereña, NCAT. 4: www.gartenratgeber.de.
5, 6, 7: www.redepapa.org.
Page 14 — 1: UC IPM. 2, 6: Rex Dufour, NCAT. 3: Mount Allison University, New Brunswick,
Canada (Robert Thompson). 4: UC IPM. 5, 10: Unattributed. 7, 9: University of Washington
Restoration Ecology Network. 8: University of Minnesota. 11: University of California Sustainable
Agriculture Education Program, www.sarep.ucdavis.edu.

Page 15 — 1, 2, 3, 4, 5: Unattributed. 6: Sustainable Ag Farm of Minnesota. 7: UC IPM.
9: Flame Weeders, Glenville, WV. 10, 11: Larry Deleers, Saukville Tractor Corporation.
Page 16 — 1, 2: Bainer, R., R.A. Kepner and E.L. Barger, 1955, *Principles of Farm Machinery*, p.261 &
265, John Wiley & Son, Inc., N.Y. 3, 6: PAV Lelystad, The Netherlands. 4, 8: Unattributed.
5: www.tuff-bilt.com. 7: Roger Samson, REAP-Canada. 10, 11, 12, 13: USDA.
Page 17 — 1, 2, 5: UC IPM. 3: Illustration from Salmon, T. P., and R. E. Lickliter. 1984. *Wildlife Pest
Control around Gardens and Homes*. Univ. of Calif. Agric. & Natural Resources Publ. 21385.
4, 7: Univ. of Florida Inst. of Food & Ag. Science, *Southeast Pocket Gopher* by W.H. Kern, Jr.,
<<http://edis.ifas.ufl.edu/uw081>> 6: Drawing by Martín Guereña, NCAT.
Page 18 — 1, 2, 3, 5, 6, 9: The Barn Owl Centre of Gloucester, www.barnowl.co.uk
4, 7, 8: Irene Lindsey, <http://kaweahoaks.com/html/barn_owl_house.html>
Page 19 — 1, 2, 3, 4, 5: UC IPM. 6: www.uwecschi.de:808/170.htm. 7: Unattributed.
Page 20 — 1, 2: UC IPM. 3: Rex Dufour, NCAT. 4: www.wildbirdmart.com.
Page 21 — 1: Unattributed. 2, 7: UC IPM. 3: R.Z. Brown, US Department of Health, Education and
Welfare's Communicable Disease Center. 4, 5: From Bjornson, B.F., and C.V. Wright, 1960, *Control of
Domestic Rats & Mice*, Center for Disease Control, USDHEW, Public Health Service (Publ. 563).
6: From Storer, T.I., 1960, *How to Control Rats & Mice*, Calif. Ag Experiment Station Extension Service
(Leaflet 127). 8: USDA Animal & Plant Health Inspection Service, WS.

- **Cornell University Vegetable MD** — www.vegetablemdonline.ppath.cornell.edu
- **OSU Mint** — *Integrated Pest Management on Peppermint- IPMP3.0* [online], by Berry, R.E., and L.B. Cooper (2000), Publication No. IPPC E.01-01-1, <<http://mint.ipcc.orst.edu>>
- **OSU Potato** — *Identification and Management of Major Pest & Beneficial Insects in Potato* [online], by Berry, R.E., G.L. Reed, and L.B. Cooper (2000), Publication No. IPPC E.04-00-1, <<http://ippe2.orst.edu/potato>>
Both OSU Mint and OSU Potato from Oregon State University, Department of Entomology and Integrated Plant Protection Center, Corvallis, OR. All OSU photos here from the Ken Gray Slide Collection, Extension Entomology, Oregon State University, Corvallis, OR.
- **TAMU** — Texas A & M University: Department of Plant Pathology, <<http://plantpathology.tamu.edu>> and Department of Entomology, <<http://entowww.tamu.edu>>.
- **UC IPM** — University of California Statewide Integrated Pest Management Program, © UC Regents. All UC IPM photos are by Jack Kelly Clark, unless otherwise noted. Web site: <<http://axp.ipm.ucdavis.edu>>
- **UFL** — University of Florida Institute of Food and Agricultural Science's Featured Creatures, <<http://creatures.ifas.ufl.edu>>

© 2004 National Center for Appropriate Technology



Offices in Arkansas, California, and Montana
www.ncat.org

For more information, call ATTRA
(The National Sustainable Agriculture Information Service)
at 1 800 346-9140. Or visit www.attra.ncat.org

Para más información en Español,
Llámenos al proyecto ATTRA
(El Centro Nacional de Información de la Agricultura Sostenible)
al 1 800 411-3222. La llamada es gratis.
O visita nuestro sitio Web — www.attra.ncat.org/espanol/