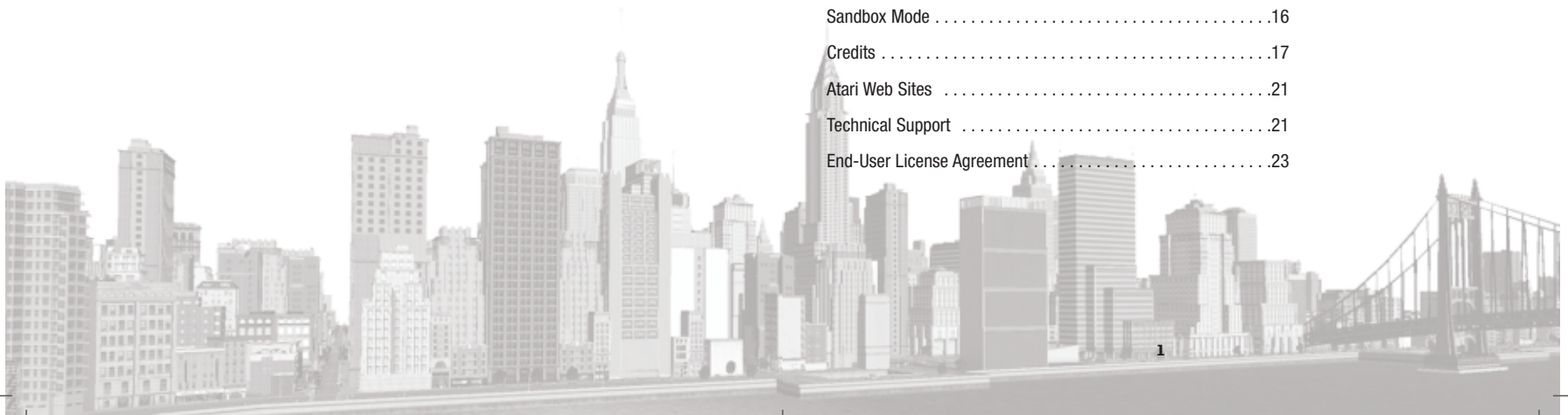


TABLE OF CONTENTS

Setup and Installation	2
Controls	3
Introduction – Build New York!	4
How to Begin	4
Launcher Screen	4
Main Menu	4
Options Menu	4
New Game	5
Game Mode	6
Build New York	7
Essential Menu and Interface Reference	10
Saving and Loading	10
Calendar and Cash Panel	10
Citizen Information Panel	10
Build Panel	11
Landmarks	12
Information Menu Panel	12
Upgrade Menu	14
Filter Menu	15
Headquarters	15
Sandbox Mode	16
Credits	17
Atari Web Sites	21
Technical Support	21
End-User License Agreement	23



SETUP AND INSTALLATION

THE README FILE

Tycoon City: New York has a ReadMe file where you can view both the License Agreement and updated information about the game. We strongly encourage you to read this file in order to benefit from changes made after this manual went to print.

To view this file, double-click on it in the *Tycoon City: New York* directory found on your hard drive (usually C:\Program Files\Atari\Tycoon City – New York). You can also view the ReadMe file by first clicking on the Start button on your Windows® taskbar, then on Programs, then on Atari, then on *Tycoon City: New York*, and then on the ReadMe file.

Before you can install the *Tycoon City: New York* CD-ROM, make sure that your computer at least meets the minimum system requirements.

SYSTEM REQUIREMENTS

Operating System:	Windows® 2000/XP
Processor:	Pentium® 4 1.8 GHz or AMD Athlon™ 1.8 GHz (Pentium® 4 3 GHz or AMD Athlon™ 3 GHz or higher recommended)
Memory:	512 MB RAM
Hard Disk Space:	1.5 GB free
CD-ROM Drive:	4x or faster (8x or faster recommended)
Video:	64 MB Hardware T&L-compatible video card (128 MB recommended)*
Sound:	Direct X® version 9.0c-compatible sound card
DirectX®:	DirectX® version 9.0c (included) or higher

*64 MB video cards that do not support Hardware T&L, such as the Nvidia Geforce 4 MX or any Intel integrated video card, are not supported.

INSTALLATION

1. Start Windows® 2000/XP.
2. Insert the *Tycoon City: New York* game disc into your CD-ROM drive.
3. If AutoPlay is enabled, a title screen should appear. If AutoPlay is not enabled, or the installation does not start automatically, click on the Start button on your Windows® taskbar, then on Run. Type D:\Setup and click on OK. **Note:** If your CD-ROM drive is assigned to a letter other than D, substitute that letter.
4. Follow the remainder of the on-screen instructions to finish installing *Tycoon City: New York*.
5. Once installation is complete, click on the Start button on the Windows® taskbar and choose **Programs/Atari/Tycoon City: New York/Tycoon City – New York** to start the game.

Note: You must have the *Tycoon City: New York* game disc in your CD-ROM drive to play.

INSTALLATION OF DIRECTX®

Tycoon City: New York requires DirectX® 9.0c or higher in order to run. If you do not have DirectX® 9.0c or higher installed on your computer, click “Yes” when asked if you would like to install it.

CONTROLS

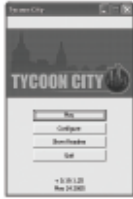
KEYBOARD CONTROLS	
In Game Menu	ESCAPE
Camera Keys	
Pan Left	A or left arrow
Pan Right	D or right arrow
Move Forward	W or up arrow
Move Backward	S or down arrow
Orbit Left	Q
Orbit Right	E
Pitch Up	R
Pitch Down	F
Zoom In	X or Page Up
Zoom Out	Z or Page Down
Upgrade Placement Keys	
Rotate Counterclockwise	COMMA or SPACE
Rotate Clockwise	PERIOD
MOUSE CONTROLS	
Select Citizen or Building	Left click to select. Shift-click to track citizen.
Zoom to Building or Road	Double-click with left mouse button
Enter Build Mode	Click left mouse button on empty ground
Rotate and Elevate Camera	Hold down the right mouse button and then rotate the camera in the desired direction. Move forward and backward to change pitch. Tip – right click on an area of interest. The screen will pivot around that point and draw it to the center of the screen as you rotate!
Zoom In/Out	Roll the mouse wheel. Tip – point at an area of interest, then roll the wheel – it will zoom to that location rather than the center of the screen.
Pan Camera	Hold down mouse wheel and move the mouse. Tip – middle-click on an object of interest and drag it to the center of the screen.

INTRODUCTION – BUILD NEW YORK!

Tycoon City: New York is a rags-to-riches social simulation set in the capital of the world, New York! Starting from humble beginnings, you must build, upgrade and customize your way to the top. Watch thousands of people live out their lives, then assess their needs and make them happy. Develop 12 distinct neighborhoods of Manhattan Island with authentic building styles, landmarks and world famous tourist attractions, including the small scale charm of Greenwich Village, the intense bustle and bright lights of Times Square, and the serene calm of Central Park. Put on shows and watch the parades as a living, breathing Manhattan Island unfolds before your very eyes. Customize your businesses, add glitz and glamour, make more money, and outclass the competition to become number one in New York!

HOW TO BEGIN LAUNCHER SCREEN

When you first launch *Tycoon City* you will see this panel.



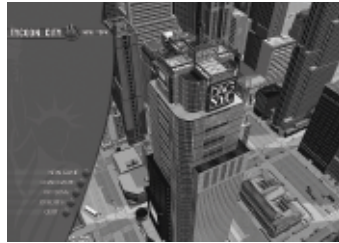
Play – Begin the game.

Configure – Adjust graphical settings and select language.

Show Readme – Display ReadMe file.

Quit – Quit launcher screen and return to Windows.

MAIN MENU



New Game – Select *New Game* to start a new game of *Tycoon City: New York*. Choose this option if this is your first time playing *Tycoon City: New York*, as you will get the opportunity to play through an informative tutorial.

Load Game – Load a previously saved game.

Options – Set in-game sound and interface options.

Credits – See a list of all the amazing people who worked on *Tycoon City: New York*.

Quit – Quit the game and returns to Windows.

OPTIONS MENU

Master Volume – Click on the left or right arrows to set the volume for all sounds in the game.

Music Volume – Click on the left or right arrows to raise or lower the volume of title music.

SFX Volume – Click on the left or right arrows to set the volume of sound effects.

Hints and Tips – Toggle in-game hints and tips display ON/OFF. We recommend that new players leave this ON.

Nudge Scroll – Toggle the nudge scroll feature ON/OFF. When nudge scroll is ON, the ground will scroll when you move your cursor to an edge of the screen.

Tool Tips – Toggle tool tips ON/OFF. When tool tips are on, the game will display information about an item if you hover the cursor over it. Again, new players should leave this ON.

Reset to Defaults – Restore the game to its original settings.

OK – Confirm your settings and return to the Main Menu.

Cancel – Cancel changes and return to the Main Menu.

NEW GAME

Clicking on **NEW GAME** takes you through a three stage process of entering your name, selecting a picture that will be used to represent you in the game, and selecting a game mode.



Name Entry

Here you enter the first and last name that will be used to represent you throughout the game. A default name is already entered in both text entry boxes. To remove this default name, select the text box and hit delete.

Type in your your first name and then click in the second text box and type in your last name. There is a limit to the number of characters you may enter. Click on the OK button or text to continue to

the Picture Select screen. Click on the **BACK** button to return to the Main Menu.

Picture Selection

Choose a picture to represent you in the game. You can choose one of the preset images, or you can access any number of your own pictures if you put them in the game's My Pictures folder: C:\My Documents\Atari\Tycoon City – New York\My Pictures. (This is inside your standard Windows "My Documents" folder – in most cases this is found on the C Drive.) Three preset images are displayed at a time. Use the left and right scroll buttons to move through all of the available images.



TCNY TIP

If you import your own images into the game, make sure they look good. You never know where they'll end up if you become rich and successful!

Game Mode

Choose from one of the two game modes:



Build New York – Become a City Tycoon and beat off the opposition, taking advantage of numerous opportunities that come your way. *Build New York* is the main campaign mode of Tycoon City. This mode will show you what to do, tell you about the diverse districts that make up Manhattan Island, and introduce you to a few New York locals who will guide you along and present you with some very interesting business opportunities. This mode includes a quick and simple tutorial to start you off, and it is the mode that we recommend for first-timers.

Sandbox Mode – Play with the freedom to build New York as you wish with no pressures. Sandbox Mode unlocks the whole of Manhattan Island. Build what you want, where you want it amongst the world famous New York landmarks.



BUILD NEW YORK

Tycoon City: New York enables you to build your own Manhattan Island district by district. Each district has its own unique vibe and styles, with its own distinct way to make money. To make it to the top in Tycoon City you'll need to find out what the population wants and provide it for them. Then you'll want to upgrade it until it's the best business in the neighborhood!

Tutorial

When the game starts, you're given the option to run the game tutorial. This will give you a quick tour of the game controls and mechanics. To run the Tutorial, click on the Game Menu in the lower-left corner of the screen and then click on the *Opportunities* button. Select "Welcome to New York" to start the tutorial. Once you've got the hang of everything you'll be free to build your own New York. Watch the Hints and Tips for further advice as you play.

District Overview

When you start the game for the first time a movie will provide you with some useful information about Greenwich Village — the district that you are about to build in — and the people who live there. Selecting the *Information* tab will show you detailed district information.

Through the game, whenever you unlock a new district a District Introduction Movie will play. Be sure to pay attention to the movies for clues about the best businesses to build for the citizens of that district!

Opportunities Window

The *Opportunities* window opens in the lower-left corner of the screen. If you accidentally close the window, you can reopen the tab by selecting *Opportunities* button (the icon with an exclamation point) from the primary game menu.

Ticker Tape

New York is a big place, with a lot going on. Far more, in fact, than you'll ever be able to monitor by yourself. So pay attention to the scrolling ticker across the bottom of the screen.

Whenever an important event occurs in the city, the ticker will let you know. Opponents' completed buildings, new unlocked building types and upgrades, major city events and much more will be announced on the ticker.



TCNY TIP

The ticker tape is also a good way to keep tabs on your opponents. When they build major businesses or surpass your performance in certain areas, the ticker will let you know.



Calendar and Cash Panel

Your key status information is shown in the upper-right corner. The panel shows the time of day, the month and the current year. More importantly, your total cash balance is displayed here to instantly remind you how rich you are! (Or, if times are bad, how far away from becoming rich you are.)

Below your Cash balance, the menu displays three other key statistics: the total population of the city, how many Upgrade Credits you have and the number of Landmark Bonds you have.

Find out what people want

To survey the needs of the city population, click on any pedestrian on the streets. The *Citizen Information* panel will open showing you the individual's information and current needs. For a bigger view, you can pick on a residential building, which will present you with the aggregate desires of all of the residents of the building.

Build! Build! Build!

Once you know what people want, you can start building businesses for them. Are they hungry? Build them some restaurants. Do they want retail shopping? Build them a clothing store. Do they want entertainment? How about a nightclub?

But be careful...

Different people have different tastes, and people with similar tastes tend to stick together. So make sure that the businesses you build match the tastes and the pockets of the people in the area, otherwise your businesses may bomb.



TCNY TIP

Watch for the reactions of people coming out of your businesses. If they're unhappy, you'll be able to see it clearly in their actions.

Are you in an insanely wealthy area? Or is it somewhere more bohemian? Can university students really afford to eat in an exclusive French restaurant? (Do they even own a tie?) Do supermodels really want to go to a cheap bar? (Imagine the hassle!) ... You decide.

Upgrade, Enhance, Bigger & Better

Once you have built your businesses, make sure to do what you can to improve them. You want yours to be the best, so upgrade it and make it more beautiful. How about something to draw people in? Place some tables for people to sit at, or a waitress to improve service and increase customer satisfaction.

Sphere of Influence



Every business has a Sphere of Influence. This is the total area around the business in which citizens are aware of the establishment. You can check a business's Sphere of Influence by clicking on the building and then selecting the *SOI* button.

Upgrading your business will increase its Sphere of Influence, making more people aware of it and drawing more people in the doors. Increasing the Businesses Rating will also add to the range of the Sphere of Influence – the more popular the business, the more word will spread!

Manhattan Expands Before Your Very Eyes!

Manhattan is a BIG place... way too big to construct one building at a time. To help you, *Tycoon City* constantly monitors what you are doing and helps you along. This means that as you build you will see other buildings being constructed. Basically it works like this: If you are busy building shops and businesses, the game will assess how many residents the area can now support, and will build residential properties, flooding people into the area to spend money in your wonderful new businesses. If, however, you decide you want to be a real-estate king and build lots of residential properties, the game will assess the population and build supporting businesses to satisfy the people's needs.



But be careful, because the game is also your competitor! If you want to be the richest, most powerful entrepreneur in New York City, you will have to build far better and more prestigious businesses than those that are building up around you!

Wonderful Opportunities

In Build New York mode, you will meet various New York locals who will present you with exciting new business and civic opportunities.

Whenever a new opportunity becomes available, you will be alerted by the Ticker Tape. Once an opportunity becomes available, you can address it at any time. You can also have multiple opportunities running at once. Open the *Opportunity* panel and select from any of the unlocked opportunities to meet one of the New York City locals.

Listen to what these people say! Then check the *Opportunity* panel and build what you need to reach the opportunity's requirements.



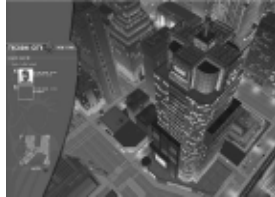
ESSENTIAL MENU AND INTERFACE REFERENCE

SAVING AND LOADING

Rome wasn't built in a day, and neither was New York. Because of this, you're probably going to want to save your game at least a few times on your way to becoming a billionaire.

Save Game

To save a game, press **Esc** to display the Pause Menu and then click on Save Game to enter the Save Game Menu. Click on the slot marked "Empty" at the top of the screen to create a new save game, or click on an existing save game slot to overwrite an existing saved game.



Load Game

To load a saved game, press **Esc** to open the Pause Menu and click on the Load Game button to enter the load game menu. Then click on a saved game to load it.

CALENDAR AND CASH PANEL



The *Calendar and Cash* panel is found in the upper-right corner of the game screen.

The panel shows the most critical information in the game – how wealthy you are! Your cash balance will increase with every purchase made or rent paid for one of your businesses. It will decrease whenever you build or purchase a building.

Above your Cash balance you'll see the time of day, the current month and the year.

Click on the small arrow on the left of the panel to control the speed at which time passes in the game. Click on the "/" button to pause the game, "x1" to run at regular game speed, or speed things up by clicking on "x2" or "x4."

The number of inhabitants of New York City is displayed below your Cash balance, as well as your current total of Landmark Bonds. Click on the Landmark Bonds to open a table, showing all of the points when more Landmark Bonds will be awarded. Not only can you track your progress, but also find new awards to aim for.

This panel also shows your available Upgrade Credits. You can use these to beautify your buildings and make them more desirable to potential customers. See "Upgrades" on page 14 for more information.

Just beneath this panel are two arrow buttons. The BACK button allows you to fly back to a previously selected building – useful if you have been following hyperlinks around. Once you have flown back somewhere, you can use the FORWARD button to return the other building.

To close the *Calendar and Cash* panel, click on the 'X' in the panel. You can reopen the panel by clicking on the arrow in the upper-right corner of the screen.



TCNY TIP

If you have an apartment building, hotel or other residence selected, you can see the aggregate needs for all of the residents of that building by clicking the Information button. This can help you build an appropriate business for dozens of citizens with only one establishment.

CITIZEN INFO PANEL



Click on any person walking the streets to learn practically everything you would ever want to know about them, including their name, personality type, where they live, the places they are going to and coming from, as well as their current key thought.

You can see a person's needs by selecting the *Needs* panel. This menu shows the things the person craves the most at that instant. If there's a store in the vicinity that provides items that fulfill the biggest need of an individual citizen, she'll make a beeline there to sample the goods.

Many of the places listed in this panel hyperlink you to those locations. Click on the citizen's home and you will be taken directly there. If they were not impressed with a store, click on the name stated in the "Coming from" section to go and see why!

BUILD PANEL



You've got to spend money to make money. And you've got to build businesses to have customers. So once you open up a new district, the first thing you'll want to do is build some businesses.

Click on any open area of land on an available city block to open the *Build* panel.

The *Build* panel is broken down into six categories: *Accommodation, Retail & Services, Food & Drink, Entertainment, Work & Recreation, and Culture & Tourism*. Navigate through the menu to find the best business for the area and the needs of its citizens. If you don't have enough cash to build a certain establishment, the name will be grayed out of the menu.



TCNY TIP

When you place a business, all of the surrounding residences will change color on a spectrum of red to green. Red buildings have residents who won't like your new business. Green buildings are filled with citizens who are eagerly awaiting the services you're about to place. Use these colors as a guideline for the best business to place!

Hover over the various businesses and a tool-tip will appear giving more detailed information. Ensure the business supplies the desired need and that the description appears to suit the type of people you are trying to satisfy.

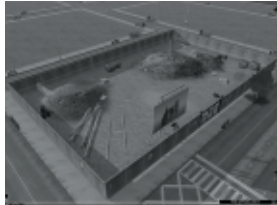
Once you have selected a business you want to build, it will appear on your cursor and you can place it on any district block that can accommodate it. Move your mouse until the building is over the spot where you want to build it and then click the ground.

If a building will not fit in the area you are attempting to put it, the building will turn red. If this happens as you hover your mouse over the space, you'll have to find another spot for the building.

Don't try to place a building outside of the district you started in. The architecture and business types in *Tycoon City: New York* are created specifically to match the districts of Manhattan. If you try to place a building in a different district, the model on your cursor will turn red.

You may click on another District without closing the *Build* panel. This will now populate the Build Menu with the correct building list for the newly selected District. If the building is allowed in both Districts, placement will be allowed.

LANDMARKS



The Manhattan skyline and streets wouldn't be the same without many famous buildings and civic structures. These well-known landmarks are handled slightly differently than the other buildings and businesses.

Throughout the game you will be rewarded Landmark Bonds for meeting various goals and achieving specific financial levels of success. You can see the number of Landmark Bonds you have accrued in the *Calendar and Cash* panel at the top-right corner of the screen. (Click on this to display the detailed table.)

Most districts have a number of construction yards contained within their boundaries.

You can't build regular businesses on a construction yard, but you can click on it to show information about the Landmark you can build there, including how many Landmark Bonds it will cost.

If you have enough Landmark Bonds, click on the *Build Landmark* button to build it. Then sit back and watch as one of New York's many famous landmarks is built before your eyes.



TCNY TIP

Landmarks increase the foot traffic and appeal of the area around them. Unlocking and placing Landmarks will improve the performance of the businesses in the immediate neighborhood.

INFORMATION MENU PANEL

The *Information Menu* panel is found in the lower-left corner of the screen. Use this menu to access critical information about the city map, your opponents and your own businesses.



Click on the Finances icon to check your finances and profits. The *My Finances* tab shows you your current cash levels and cash balance. You can also see the daily profit and loss amounts for your business empire.

The *My Profit History* tab shows you a further history of your profit and loss.

The *Businesses & Landmarks* panel allows you to quickly navigate through your businesses. Chart your business progress through the *My Businesses* tab. Each sub-menu is sortable to breakdown your network of enterprises by type, district and ratings.

- *My Business Chains* monitors all of the chain businesses you have created in the game.
- *My Landmarks* monitors all of the landmarks you have unlocked and built around the city.

Double-clicking on any business, chain or landmark name in these menus will automatically center the camera on that business.

Use the *Districts & Population* panel to survey the businesses and denizens of each district in Manhattan. You can check population and happiness ratings for districts and businesses here.

The *Top Ten* panel is critical for seeing how you rank against the rest of the major players in New York City. Can you make it to Number One?

- Use the *Tallest Building* tab to see how your tallest building stacks up against the rest of the New York skyline.
- Use the *Biggest Chains* tab to see if you have the largest or most profitable network of chain stores in the city.
- Check the *Best Businesses* panel to compare the most profitable storefronts in Manhattan. Can you make it to the top of all these lists?



The *Game Progress* panel charts your progress and statistics through the game.

Select the *Opportunities* panel to see all unlocked and incomplete Opportunities available to you. If you have not started an Opportunity, you can begin one by double-clicking on the Opportunity name in the menu. If you have already started an Opportunity, click on the name in the Opportunity list to bring up a *Status* panel for the Opportunity that shows you how close you are to completing each of the Opportunity goals.



The *Map* panel shows a mini-map of the island of Manhattan. You can click on any location on the mini-map to fly to that location in the game world and with the mouse pointer over the map, use the normal camera controls to scroll around and zoom in and out.

UPGRADE MENU



Upgrading is the key to success in *Tycoon City: New York*. Your businesses won't be successful if you don't make them as appealing as possible to draw in the crowds. Upgrading your business can improve its Appeal, Satisfaction, Capacity and Sphere of Influence.

Once you have built a business or residence, click on the building to get the *Business* panel. The third button down on the menu is the *Upgrade* button. Click on it to display the Upgrade menu.

All possible upgrades will be highlighted in the Upgrade menu. Signs, beautification, advertising, displays and many more upgrades are available for use in a business. Try to add unique upgrades to differentiate your store from your competitors.

When you select an upgrade to place on your business, the effect it will have on the business's performance will be shown in the *Upgrade* panel. Pay close attention to how an upgrade will improve the parameters of your business. If two potential upgrades will occupy the same spot on your business, you can only use one of them.

One more wrinkle: Each upgrade costs you a certain amount of Upgrade Credits. When you run out of Upgrade Credits for the business, or your stash of Global Upgrade Credits shown in the top-right panel, you won't be able to add any more upgrades. Choose wisely!

You can increase the Upgrade Credit Capacity for a business by creating a chain of businesses and building a Head Office. To gain more credits for your global stash, complete some of the Prize Opps that reward you with Upgrade Credits!



TCNY TIP

Each business type has a different set of upgrades associated with it, so be sure and browse your upgrade options before spending your Upgrade Credits.

FILTER MENU

Use the Filter menu to narrow down information about buildings on the landscape. Click on a filter to display the following



Ownership: Displays whether buildings are owned by the AI or by the player.

District: Colors the buildings according to the district in which they are situated.

Profit: Shows how profitable a building is. As we all know green is the color of money, so you may want to take a look at buildings that are coming up red.

Upgrades Available: Displays which buildings still have Upgrade Credits available. You may find this useful when you have been given extra Upgrade Credits, and you are looking for places to spend them!

Beauty: Mirror, mirror on the wall, which building is the fairest of them all? You can use this filter to help you answer that question! Any business that has Beauty upgrades placed on it will have an impact on the area around it. Citizens do like a beautified area and the combined effect of a row of pretty buildings can be quite powerful. Parks also lend a strong influence to the area around them. Building within the effected area of an upgraded park can have enormous impact on people's happiness when using those businesses.

Shopping: Each Store lays down an influence disk into this view filter. Where these overlap, the shopping experience will be enhanced. Aim to create powerful shopping centers by clustering shops together. The more intense the coloring, the more powerful the shopping area. This will make the area more appealing to shoppers and will also increase their happiness, as there is more choice and a bigger buzz in the area. Businesses such as the Street Café and Coffee Bar can also positively impact a shopping area.

Nightlife: This works in exactly the same way as the Shopping system, but this time the focus is on nightlife. Bars and clubs, restaurants and shows all add to this filter. Try it out – build a lone club, then build one in a nightlife hotspot – you'll soon see the benefits!

Tourism: Once again, the system is the same, but now were looking at the impact on tourists. Landmarks will all heavily influence this filter, and the obvious tourist stores will too. There's an interesting crossover with nightlife here – many businesses will impact on both.

HEADQUARTERS

Find the *My Business Chains* panel in *My Businesses and Landmarks* in the bottom-left menu. This lists all of the business types that you have built. If you have twenty Coffee Bars spread throughout the city, you will find them all listed here under the Coffee Bar entry.

Click the + button to expand the list to show all of your Coffee Bars and their respective Location and Rating.

To create a chain of businesses, you must have enough outlets – listed in the Outlets column. The first number is how many outlets you have, the second is how many you need.

You also need the average rating of these businesses to exceed the necessary value. This is found in the next column – Rating %. Again, the first percentage value is your current level, the second is your target.

Once you have met both of these targets, you can build a Headquarters! Check the HQ column, and any business type where the criteria has been met will have a *Build* button. Click this, then choose the style of HQ you want, then find somewhere to place it! Headquarters can only be placed in the following Districts:

- TriBeCa
- The Financial District
- Chelsea and the Garment District
- Midtown
- Harlem

Head offices also fulfill the Work & Education desire for many of the adult citizens, so place them in range of areas needing work.

With a Headquarters in place, all of the businesses covered by it get extra Upgrade Capacity. Now you can place even more upgrades! Any new businesses of that type that you build or buy will be automatically added to the chain.

As the income from your chain of businesses grows, so will your HQ. Keep track of the biggest successes in the city by checking the Tallest Buildings in the Top Ten lists.

SANDBOX MODE



If you want to play on a map with all districts available from the start, then this is the place for you. Build wherever you want without the pressure of objectives. Simply have fun!

To play in this mode, select Sandbox Mode from the Game Select screen when starting a New Game. You will then have an Options Screen, which allows you to set the parameters of your game.

Cash: Use the Cash Slider to set how much money you have at the start of the game. Once you start building and upgrading, your cash level will rise or drop based on normal game progression.

Opponents: Do you want opponents? If you choose no, you will have the entire island of Manhattan to yourself and will have to build every residence and storefront in the city. If you select yes, other entrepreneurs will compete against you and fill out the city skyline as you progress.

Opponent Build Rate: This sets the pace at which opponents will place buildings in the game world. Choose Low and the other entrepreneurs will build at a slow pace. *Regular* sets the same pace that opponents build in Build New York mode. *High* makes opponents place competing businesses in the world very quickly.

CREDITS

ATARI EUROPE

Republishing Team

Rebecka Pernered
Republishing Director
Sebastien Chaudat
Republishing Manager
Maxime Loppin
Republishing Producer
Ludovic Bony
Localization Manager
Franck Genty
Localization Technical Consultant
Dider Flipo
Localization Technical Consultant
Caroline Fauchille
Printed Materials Manager

Celine Vilgicquel
Printed Materials Project Manager

Vincent Hattenberger
Copywriter

Jenny Clark
MAM Project Manager

Manufacturing/Supply Chain

Alain Fourcaud
Director Supply Chain

Fanny Giroud

Mike Shaw

Jean Grenouiller

Elise Pierrel

Manufacturing Coordinators

Game Evaluation Team

Dominique Morel
Game Evaluation & Consulting Manager

Jocelyn Cioffi

JY Lapasset

Evaluation & Consulting

Quality Assurance Team

Lewis Glover

Quality Director

Carine Mawart

Quality Control Project Manager

Lisa Charman

Certification Project Manager

Sophie Wibaux
Product Planning Project Manager

Stephane Enteric
Engineering Services Expert

Pascal Guillen
Engineering Services Expert

Marketing Team

Cyril Voiron
European Marketing Director

Lisa Humphries
Group Marketing Manager

Renaud Marin
European Web Manager

John Tyrrell
Head of Communications

Alistair Hatch
European Communications Executive

Local Marketing Team

UK – Charlotte Brown

France – Beryl Gonnard

Germany – Jens Hoffmann

Italy – Andrea Loiudice

Iberica – Laura Aznar

Nordic – Nikke Linder

Benelux – Simone Goudsmit

Switzerland – Simon Stratton

Greece – Spyros Stanistas

Isreal – Noam Weisberg

Australia – Simon Slee

Special Thanks:

RelQ

ROOM 22

Enzyme Labs

Around the Word-Claire Deiller

Synthesis + Emanuele Scichilone & Mauro

Bossetti

Petrol Advertising

ACE

Biker Bob & Versuvius

BM

DEEP RED GAMES LTD

Clive Robert
Managing Director

Paul Howarth
Development Director

George Jeganathan
Technical Director

Jim Woods-Game Options Ltd
Production Co-ordinator

Andreas Graf Rittberg – BVT Games
Production Fund Dynamic GmbH & Co. KG -
Gruenwald, Germany
Producer

Siggi Koegl – ATTACTION Gruenwald/Munich,
Germany
Executive Producer

Jon Law
Lead Designer

Luigi Fusco
Lead Opportunity Designer

Matt Thomas
Lead Artist

Jan Richardson
Lead Programmer

James Brodie
Lead QA

Malcom Reed
Character Department Lead

Ash Davis
Lead Engine Programmer

Oscar Gillespie
Rob Francis

Katie Roberts
Designers

Sarah How
David Berenguer

David Brownsea
David Price

Marcel Simons
Paul Sinton

Ayse Hodgson
Andy Hodgson
Artists

Jonathan Hunt
Richard Sykes
Will Jordan
Lee Hickey
Philip Bak
Stephen Holtom
Game Developers

Mattias Gustavsson
Brad Cooper
Stel Michael
Tim Round
Engine Programmers
Carl Lovett
Q/A

Mathew Waddilove
Phil Buckland
Simon Wottge
Character Artists

Simeon Halsey
Simon Hughes
I.T. Support

Simon Callaghan
PR

With thanks to: Graham Davis

Freelance Specialists

Medina Sound
Sound Design and Songs

Andy Caploe
Title Music

Robin Epstein
Script Writer

Justin Ferate
New York Advisor

Robin Lynn – Municipal Art Society
Research Organization

Sally Turner
Audio Network PLC

Centroid Motion Capture
Motion Capture

ESCAPE STUDIOS

Mark Cass
Project Director

Alan Lewis
Head of Art / Team Leader

Dean Wray
Head of Technical Art / Team Leader

Chris 'Gizmo' Bradwell
P. Guy W. Buckley

Sam Carlisle
Nicole Coleman

Matt Foster
Paul Harrison

David Kent
Mak Knighton

Trevor Ley
Ashley Phillips

Phil Radford
Adam Thornton-Dewhirst

Sergio Xisto
Artists

Special Thanks

Ted Green
Justin Ferate
Robin Epstein
Sally Turner

ATARI USA**Product Development**

Bill Carroll
Producer

Robert Smith
Executive Producer

Tim Perry
Director of Technology

Sara Hasson
Project Planning Coordinator

Marketing and Communications

Emily Anadu
Brand Manager

Matt Collins
Director of Global Brand Management

Nique Fajors
Vice President of Global Brand Management

Marc Metis
Senior Vice President Marketing

Andrea Schneider
Director of Public Relations

Martin Currie
Vice President of Marketing Services

Mike Maier
Creative Director

Liz Fierro
Creative Services Manager

Kate Crotty
Traffic Manager

David Leitner
Director of Media

Ryan Barr
Vice President of Corporate Communications

Sales and Distribution

Wim Stocks
Executive Vice President, Sales & Distribution

Maleea Barnett
Vice President, North American Sales

Christine Fromm
National Channel Marketing Manager

Operations

Todd Curtis
Vice President, Operations

Eddie Pritchard
Director of Manufacturing

Gardnor Wong
Senior Buyer

Venus Francois
Buyer

Lisa Leon
Lead Senior Buyer

Tara Moretti
Buyer

Jason Hartnell
Internet Development Group

Ken Ford
I.T. Manager/Western Region

Quality Assurance and Support

Ezequiel "Chuck" Nunez
Manager of Publishing Support

Ken Ford
I.T. Manager/Western Region

Michael Vetsch
Manager of Technical Support

Jason Cordero
O.A. Testing Supervisor

Anwar Malimban
Lead Tester

Justin Rybji
Assistant Lead Tester

Daniel Burns
Jason Gates

Brian Salwasser
Richard Chairaz

Johnny Wang
Kevin Chen

Jo Aragones
Anthony Ma

Michelle Ivanovich
Alissa Ivanovich

Mark Lionbarger
David Gomez

Philip Dickerson
Rob Tibbetts

Testers

Dave Strang
Manager, Engineering Services and Compatibility Lab

Ken Edwards
Engineering Services Specialist

Dan Burkhead

Eugene Lai
Engineering Services Technicians

Piers Sutton
Beta Testing Administrator

Chris McQuinn
Senior Compatibility Analyst

Patricia-Jean Cody
Compatibility Test Lead

Randy Buchholz
Patricia-Jean Cody

Cuong Vu
Adrian Escultura

Randy Nguyen
Compatibility Analysts

Joy Schmeer
Director, Strategic Relations

Cecelia Hernandez
Sr. Manager, Strategic Relations

Arthur Long
Strategic Relations Specialist

Special Thanks

Heather Thompson

HighWater Group

Tangible Media

Red Sheet Studio – Essex, MA

Matthew Labunka – Atari Forums Head Administrator

Producer: BVT Games

Production Fund Dynamic GmbH & Co. KG /

Andreas Graf v. Rittberg

Executive Producer: ATTACTION / Siggí Kógl

ATARI WEB SITES

To get the most out of your new game, visit us at:

atari.com/tycooncity

If you would like to chat with other gamers, as well as developers, visit our Community Forum area at:

ataricomunity.com

Kids, check with your parent or guardian before visiting any web site.

Chat Messages: Atari does not monitor, control, endorse, or accept responsibility for the content of chat messages. You are strongly encouraged not to give out identity or other personal information through chat message transmissions. Kids, check with your parent or guardian if you are concerned about any chat you receive.

Use of Atari web sites is subject to terms and conditions, which you can access at:

atari.com/us/tos

TECHNICAL SUPPORT (U.S. & CANADA)

HELP VIA THE INTERNET

Up-to-the-minute technical information about Atari products is generally available 24 hours a day, 7 days a week via the Internet at:

atarisupport.com

Through this site you'll have access to our **FAQ** (Frequently Asked Questions) documents, our **FTP** (File Transfer Protocol) area where you can download patches if needed, our **Hints/Cheat Codes** if they're available, and an **E-Mail** area where you can get help and ask questions if you do not find your answers within the **FAQ**.

Note: In the event we must send you a Hint Sheet, FAQ document, patch or update disc via E-mail, we may require verifiable consent from a parent or guardian in order to protect children's privacy and safety online. Consent Forms are available at the web site listed above.

HELP VIA TELEPHONE IN THE UNITED STATES & CANADA

For phone assistance, call **Atari Technical Support** at **(425) 951-7108**. Our **Interactive Voice Response** system is generally available 24/7, providing automated support solutions immediately.

Great News! We've improved our Automated Systems so that you can get product-specific Troubleshooting help more quickly. All you need to do is enter the product's **Part #** when prompted to do so. This will take you directly to all of our known issues and solutions for this title. The product's **Part #** is located in several places (on the CD label, package and/or plastic disc case) and is usually identified by a number such as **04-12345**. When prompted by the Automated System, enter the **last five digits** of your product's Part #. (For example, Part # 04-12345 would require that you enter the "12345" portion of the number for that product.) **Note:** Some products simply feature a five-digit Part # without an "04-" prefix.

Live support is generally available Monday through Friday, 8:00 AM until 6:00 PM (Pacific Time). **Note:** We may be closed on major holidays.

Before making your call, we ask that you be at your computer, have the following information available, and be ready to take notes:

- System Make and Model
- Processor Type
- Operating System, including version number (such as Windows® XP)
- RAM (Memory)
- Video and sound card data and drivers
- Any screen or error messages you've encountered (and where)

PRODUCT RETURN PROCEDURES IN THE UNITED STATES & CANADA

In the event our technicians at (425) 951-7108 determine that you need to forward materials directly to us, please include a brief letter explaining what is enclosed and why. Make sure you include the Return Merchandise Authorization Number (RMA#) supplied to you by the technician, and your telephone number in case we need to call you. You will receive the mailing address when the technician gives you the RMA#. Any materials not containing this RMA# will be returned to you unprocessed.

WARRANTY POLICY IN THE UNITED STATES & CANADA

If our technicians determine that the product storage medium is found to be defective within ninety (90) days of original purchase, (unless otherwise provided by applicable law), Atari will replace the item free of charge, to the original purchaser, if the item is accompanied by the original dated receipt and packaging.

TECHNICAL SUPPORT (INTERNATIONAL)

KOREA

ATARI KOREA

Phone: +82 2 545 4555
Email: support.kr@atari.com
Website: <http://kr.atari.com/>

TAIWAN & CHINA

ATARI TAIWAN

Phone: +886 2 2546 9888
Email: service.tw@atari.com
Website: <http://www.tw.atari.com/>

SINGAPORE, HONG KONG, MALAYSIA, THAILAND, THE PHILIPPINES

ATARI SINGAPORE

Phone: +65 6538 9700
Email: techsupport.sg@atari.com
Website: no website as yet

AUSTRALIA

ATARI AUSTRALIA

Phone: "Games Hotline" 1902 26 26 26 (Calls charged at \$1.80+ GST per minute – higher rates apply to pay phones and mobile phones)
Email: support.australia@atari.com
Website: <http://www.atari.com.au>

NEW ZEALAND

ATARI NEW ZEALAND

Phone: "Games Hotline" 0900 54263 (Calls charged at \$1.99+ GST per minute – higher rates apply to pay phones and mobile phones)
Email: support.australia@atari.com
Website: <http://www.atari.com.au>

END-USER LICENSE AGREEMENT

IMPORTANT — READ CAREFULLY: Please be sure to carefully read and understand all of the rights and restrictions described in this End-User License Agreement ("EULA").

AGREEMENT

This document is an agreement between you and Atari, Inc. and its affiliated companies ("Company"). The enclosed software game disc(s), cartridge or Game Pak ("Software") and any accompanying printed materials are licensed to you only on the condition that you accept all of the terms contained in this EULA.

By opening this package and installing or otherwise using the Software you agree to be bound by the terms of this EULA. If you do not agree to the terms of this EULA you may not install or use the Software and within 15 days of purchase you must call the Tech Support telephone number listed in the manual accompanying the Software (the "Manual"). Select the Automated Phone System's Main Menu option for Consumer Services and follow the prompts.

You will be given a Return Merchandise Authorization number (RMA #) by the technician. You then have 15 days from the date of this contact to return the Software in its protective covering, the Manual and the original sales invoice to the address supplied to you.

If this is a PC product, when you install the Software you will be asked to review and either accept or not accept the terms of the EULA by clicking the "I Accept" button. By clicking the "I Accept" button you acknowledge that you have read the EULA, understand it and agree to be bound by its terms and conditions.

COPYRIGHT

The Software is protected by copyright laws and international copyright treaties, as well as other intellectual property laws and treaties. All title and copyrights in and to the Software (including but not limited to any images, photographs, animations, video, music, text and "applets" incorporated into the Software) and any printed materials accompanying the Software are owned by the Company or its Licensors.

GRANT OF LICENSE

The Software is licensed and not sold to you and its use is subject to this EULA. The Company grants you a limited, personal, non-exclusive license to use the Software in the manner described in the user documentation. The Company reserves all rights not expressly granted to you in this EULA.

PERMITTED USES

1. If the Software is configured for loading on a hard drive, you may install and use the Software on a single computer.
2. You may make and maintain one copy of the Software for backup and archival purposes, provided that the original and copy of the Software are kept in your possession.
3. You may permanently transfer all your rights under this EULA, provided you retain no copies, you transfer all of the Software (including all component parts, the media and printed materials and any upgrades) and the recipient reads and accepts this EULA.

RESTRICTIONS

1. You may not delete or obscure any copyright, trademark or other proprietary notice on the Software or accompanying printed materials.
2. You may not decompile, modify, reverse engineer, disassemble or otherwise reproduce the Software.
3. You may not copy, rent, lease, sublicense, distribute, publicly display the Software, create derivative works based on the Software (except to the extent expressly permitted in the Editor and End-User Variation section of this Agreement or other documentation accompanying the Software) or otherwise commercially exploit the Software.
4. You may not electronically transmit the Software from one computer, console or other platform to another or over a network.
5. You may not use any backup or archival copy of the Software for any purpose other than to replace the original copy in the event it's destroyed or becomes defective.

EDITOR AND END-USER VARIATIONS

If the Software includes a feature that allows you to modify the Software or to construct new variations (an "Editor"), you may use such Editor to create modifications or enhancements to the Software, including the construction of new levels (collectively the "Variations"), subject to the following restrictions. Your Variations: (i) must only work with the full, registered copy of the Software; (ii) must not contain modifications to any executable file; (iii) must not contain any libelous, defamatory or other illegal material, material that is scandalous or invades the rights of privacy or publicity of any third party; (iv) must not contain any trademarks, copyright-protected work or other property of third parties; and (v) may not be commercially exploited by you, including but not limited to making such Variations available for sale or as part of a pay-per-play or timesharing service.

TERMINATION

This EULA is effective until terminated. You may terminate this EULA at any time by destroying the Software. This EULA will terminate automatically without notice from the Company if you fail to comply with any provisions of this EULA. All provisions of this EULA as to warranties, limitation of liability, remedies and damages will survive termination.

LIMITED WARRANTY AND DISCLAIMER OF WARRANTIES

You are aware and agree that use of the Software and the media on which is recorded is at your sole risk. The Software and media are supplied "AS IS." Unless otherwise provided by applicable law, the Company warrants to the original purchaser of this product that the Software storage medium will be free from defects in materials and workmanship under normal use for ninety (90) days from the date of purchase. The warranty is void if the defect has arisen through accident, abuse, neglect or misapplication. If the Software fails to conform to this warranty, you may at your sole and exclusive remedy, obtain a replacement free of charge if you return the defective Software. Follow the Product Return Procedures described in the Manual. The Company does not warrant that the Software or its operations or functions will meet your requirements, or that the use of the Software will be without interruption or error.

TO THE FULLEST EXTENT PERMISSIBLE UNDER APPLICABLE LAW, EXCEPT FOR THE EXPRESS WARRANTY SET FORTH ABOVE, THE COMPANY DISCLAIMS ALL WARRANTIES, EXPRESS OR IMPLIED, INCLUDING AND WITHOUT LIMITATION, THE IMPLIED WARRANTIES OF MERCHANTABILITY AND FITNESS FOR A PARTICULAR PURPOSE AND NON-INFRINGEMENT. EXCEPT FOR THE EXPRESS WARRANTY SET FORTH ABOVE, THE COMPANY DOES NOT WARRANT, GUARANTEE OR MAKE ANY REPRESENTATION REGARDING THE USE OR THE RESULTS OF THE USE OF THE SOFTWARE IN TERMS OF ITS CORRECTNESS, ACCURACY, RELIABILITY, CURRENTNESS OR OTHERWISE. SOME JURISDICTIONS DO NOT ALLOW THE EXCLUSION OF OR LIMITATIONS ON IMPLIED WARRANTIES, SO THE ABOVE EXCLUSIONS AND LIMITATIONS MAY NOT APPLY TO YOU.

LIMITATION OF LIABILITY

IN NO EVENT WILL THE COMPANY OR ITS EMPLOYEES OR LICENSORS BE LIABLE FOR ANY INCIDENTAL, INDIRECT, SPECIAL, CONSEQUENTIAL OR PUNITIVE DAMAGES, OR ANY DAMAGES WHATSOEVER (INCLUDING, WITHOUT LIMITATION, DAMAGES FOR INJURY TO PERSON OR PROPERTY, FOR LOSS OF PROFITS, BUSINESS INTERRUPTION, LOSS OF BUSINESS INFORMATION, LOSS OF PRIVACY, FAILURE TO MEET ANY DUTY AND NEGLIGENCE) ARISING OUT OF OR IN ANY WAY RELATED TO THE USE OR INABILITY TO USE THE SOFTWARE, EVEN IF THE COMPANY OR AN AUTHORIZED REPRESENTATIVE OF THE COMPANY HAS BEEN ADVISED OF THE POSSIBILITY OF SUCH DAMAGES. SOME JURISDICTIONS DO NOT ALLOW THE EXCLUSION OF LIABILITY FOR INCIDENTAL OR CONSEQUENTIAL DAMAGES, SO THE ABOVE EXCLUSION MAY NOT APPLY TO YOU.

IN NO EVENT WILL THE LIABILITY OF THE COMPANY FOR DAMAGES WITH RESPECT TO THE SOFTWARE EXCEED THE AMOUNTS ACTUALLY PAID BY YOU FOR THE SOFTWARE.

CHOICE OF LAW AND VENUE

This EULA is governed by the laws of the United States of America and the State of New York, exclusive of its conflicts of law provisions. The exclusive venue for litigation regarding or arising from this EULA is New York County, New York and you agree to submit to the Jurisdiction of the courts of New York County, New York for any such litigation.

MISCELLANEOUS

If any provision or portion of this EULA is found to be unlawful, void, or for any reason unenforceable, it will be severed from and in no way affect the validity or enforceability of the remaining provisions of the EULA.

This EULA constitutes the entire agreement between you and the Company regarding the Software and its use.

© 2006 Atari Interactive, Inc. All rights reserved. Atari and the Atari logo are trademarks owned by Atari Interactive, Inc. Manufactured and marketed by Atari, Inc. New York, New York. Developed by Deep Red Games Limited. The ESRB rating icons are registered trademarks of the Entertainment Software Association. Software platform logo (™ and ©) IEMA 2006. Windows is either a registered trademark or trademark of Microsoft Corporation. Uses Granny Animation.

Copyright © 1999-2004 by RAD Game Tools, Inc. All trademarks are the property of their respective owners. The Empire State Building design is a trademark of Empire State Building Company L.L.C. and is used with permission. BVT Games Production Fund Dynamic GmbH & Co. KG, Gruenwald / Munich, Germany.

01116