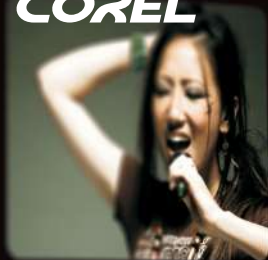


COREL®



00:21/03:34



07 00:21/03:34



00



00:21/03:34



12



VideoStudio® Pro X3

User Guide

Contents

Welcome	1
Introducing Corel VideoStudio Pro.	2
System requirements.	3
Minimum system requirements	3
Recommended system specifications	3
Supported input/output devices.	4
Hardware acceleration.	4
Installing and uninstalling the application	5
Starting and quitting the application.	6
Accessing the Corel Guide.	7
To access the Corel Guide	7
Learning how to use the application	7
Preparing for video capture and editing.	8
Registering Corel products.	8
Updating the application.	9
Corel Support Services.	10
About Corel	10
Corel VideoStudio Pro Launcher	11
DV-to-DVD Wizard	13
Scan for scenes	13
Apply a template and burn to DVD	15

Advanced Edit	17
Interface	18
Step Panel	19
Menu Bar	20
Navigation Panel	20
Toolbar	22
Project Timeline	23
Storyboard View	24
Timeline View	24
Options Panel	26
Library	26
Saving Clips to the Library	28
Thumbnail Views	29
Library Organizer	29
Starting a new movie project	31
Setting your preferences	32
Setting project properties	32
Adding clips	33
Copying and pasting clip attributes	33
Previewing	34
Setting a preview range	34
Undoing and redoing actions	35
Showing and hiding grid lines	35
Saving projects	36
Saving projects by using Smart Package	36
Capture	37
The Capture Step Options Panel	38

Capturing Video	38
Split by Scene	40
Digital Video (DV)	41
Controlling the DV camcorder with the Navigation Panel	41
High Definition Video (HDV)	42
Digital TV or DVB-T video.	42
Analog video	43
TV footage	44
DV Quick Scan	44
Importing from digital media	45
Importing from mobile devices	47
Edit	49
Working with clips	50
Adding video clips	50
Adding photos	50
Color.	51
Playback speed	51
Reversing video playback.	52
Replacing a clip	52
Trimming a clip	53
Split by Scene	56
Saving trimmed clips	59
The Edit Step Options Panel	60
Assets and Effects	63
Media	64
Transitions.	66
Adding transitions to My Favorites.	68
Titles	69
Adding two title tracks	69

Saving your titles to My Favorites in the Library	71
The Title Safe Area	71
Editing titles	71
Modifying text attributes	72
Applying animation	74
Applying title effects	75
Graphic	76
Adding Color Clips	76
Adding Objects or Frames	77
Adding Flash animations	78
Customizing objects, frames and animations	78
Filters	78
Key frame settings	80
Audio	82
Taking snapshots in the Edit Step	82
Ripple Editing	83
Editing with Smart Proxy	84
Converting multiple files	86
Enhancing clips	86
Adjusting color and brightness	86
Adjusting white balance	87
Adjusting tones	89
Applying pan and zoom effect	89
Resizing and distorting clips	92
Adding cues and chapters	93
Working with Overlays	95
Adding clips to the Overlay Track	96
Adding Multiple Tracks	97
Working with Overlay clips	97

Trimming Overlay clips	98
Repositioning the current Overlay clip	98
Resizing an Overlay clip	99
Distorting an Overlay clip	99
Applying motion to an Overlay clip	100
Enhancing Overlay clips	100
Chroma keying an Overlay clip	102
Adding a mask frame	103
Painting images and animations using Painting Creator	104
Painting Creator interface basics	105
Painting Creator control buttons and sliders	106
Painting Creator modes	108
Working with Audio	110
Adding audio files	110
Adding voice-over narration	110
Adding background music	111
Importing music from an audio CD	111
SmartSound	112
Using the Clip Volume Control	113
Trimming and cutting audio clips	114
Stretching audio duration	114
Fade-in/out	115
Audio view	115
Using the Surround Sound Mixer	116
Adjusting stereo channels	116
Mixing Surround Sound	117
Duplicating an audio channel	118
Applying audio filters	118

Share	121
The Share Step Options Panel	121
Create video file.	122
Create sound file	128
Create disc	128
Export to mobile device	128
Exporting your movie	129
Project Playback.	130
Record to a DV camcorder.	130
Record to an HDV camcorder	131
Share videos online	132
Creating movie templates	134
Appendix: Shortcuts	135
Menu command shortcuts	135
Step Panel shortcuts	136
Navigation Panel shortcuts	136
Timeline shortcuts.	137
Multi-trim Video shortcuts	138
Others	139
Glossary	141

Welcome

Thank you for purchasing Corel® VideoStudio® Pro, the video-editing software that lets you produce professional-looking videos, regardless of your skill level. Corel VideoStudio Pro provides a complete set of tools for capturing, importing, and editing video and other media, and for sharing your final production on a DVD or BD, mobile devices, or the Web.



The availability of features depends on the version of the software you have.

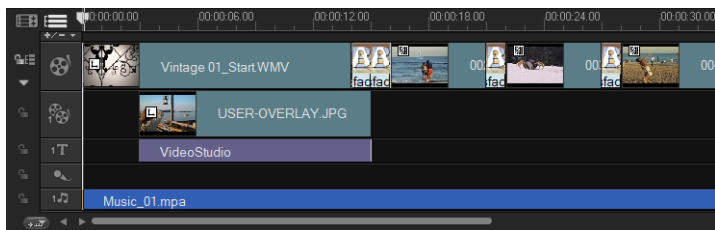
This section contains the following topics:

- Introducing Corel® VideoStudio® Pro
- System requirements
- Installing and uninstalling the application
- Starting and quitting the application
- Accessing the Corel® Guide
- Learning how to use the application
- Preparing for video capture and editing
- Registering Corel® products
- Updating the application
- Corel® Support Services™
- About Corel®

Introducing Corel VideoStudio Pro


Corel VideoStudio Pro guides you step-by-step through the process of capturing, editing, and sharing videos. The application also offers more than 100 transitions, professional titling capabilities, and simple tools for creating soundtracks.

To produce a video, you must capture or import footage from a camcorder or other video source. You can then trim the captured videos, arrange their order, apply transitions, and add overlays, animated titles, voice-over narration, and background music. These elements are organized on separate tracks in **Timeline View** and appear as chronologically arranged thumbnails in **Storyboard View**.



Components of a project as displayed in Timeline View

Video projects are saved as Corel VideoStudio Pro project files (*.vsp), which contain information on the location of the clips, on the Library, and on how the movie has been put together. After you finish your movie production, you can burn it to a DVD or BD, or export the movie back to your camcorder. You can also output your movie as a video file for playback on a computer, or export your movie to mobile devices or the Web.

Corel VideoStudio Pro has a sample project that can be launched by clicking **Instant Project**  on the Toolbar. This sample project can help acquaint you with the the application's tasks and features. You can also use one of the Instant Project templates to create your video project.

System requirements

For optimal performance of Corel VideoStudio Pro, make sure that your system meets the recommended specifications.

Minimum system requirements

- Intel[®] Core™ Duo 1.83-GHz processor, or AMD[®] Dual Core 2.0-GHz or faster processor
- Microsoft Windows[®] 7 (32-bit or 64-bit edition), Windows Vista[®] SP1 and SP2 (32-bit or 64-bit editions), or Windows[®] XP SP3 operating system software
- 1 GB of RAM
- 128 MB of VRAM
- Minimum display resolution: 1024 × 768
- Windows[®]-compatible sound card
- Windows[®]-compatible DVD-ROM

Recommended system specifications

- Intel[®] Core™ 2 Duo 2.4-GHz processor, or AMD[®] Dual Core 2.4-GHz or faster processor
- Microsoft Windows[®] 7 (32-bit or 64-bit edition), Windows Vista[®] SP1 and SP2 (32-bit or 64-bit editions), or Windows[®] XP SP3 operating system software
- 2 GB or more of RAM
- 512 MB or more of VRAM

- Minimum display resolution: 1024 × 768
- Windows[®]-compatible sound card
- Windows[®]-compatible DVD-ROM
- Hard drive: SATA 7200 RPM for Desktop, SATA 5400 RPM for Notebook

Supported input/output devices

- 1394 FireWire[®] cards for use with DV, D8, or HDV[™] camcorders
- USB Video Class (UVC) DV
- Support for OHCI Compliant IEEE-1394
- Analog capture cards for analog camcorders (VFW and WDM support for Windows[®] XP and Broadcast Driver Architecture support for Windows Vista[®] and Windows[®] 7)
- Analog and digital TV capture device (Broadcast Driver Architecture support)
- USB capture devices, PC cameras, and disc, memory, or hard drive camcorders
- Windows[®]-compatible Blu-ray Disc, DVD-R/RW, DVD+R/RW, DVD-RAM and CD-R/RW drive
- iPhone[®], iPod Classic[®] with video, iPod Touch[®], Sony[®] PSP[®], Pocket PC, Smartphone, and Nokia[®] mobile phones

Hardware acceleration

Corel VideoStudio Pro allows you to optimize the performance of your system through hardware acceleration. Select **Settings: Preferences [F6]** to open the **Preferences** dialog box. Click the **Performance** tab and select the following options:

- **Use Hardware Decoder acceleration** — enhances editing performance, and improves clip and project playback, by using

video graphics acceleration technologies with your available hardware

Note: For optimum performance, VGA cards must support DXVA2 VLD mode with Vertex and Pixel Shader 2.0 or later.

- **Use Hardware Encoder acceleration** — improves the rendering time required for producing your movies



Hardware decoder and encoder acceleration is supported only by Windows Vista and later versions of Windows operating system software and requires at least 512 MB of VRAM.

Installing and uninstalling the application

The Corel VideoStudio Pro DVD has an autorun feature that is designed to start installing the application automatically.

To install Corel VideoStudio Pro

- 1 Insert the Corel VideoStudio Pro DVD into your DVD-ROM drive.
- 2 When the Setup screen appears, follow the instructions to install Corel VideoStudio Pro on your computer.

Note: If the Setup screen does not appear after you load the DVD, you can manually launch it by double-clicking the My Computer icon on your desktop and then double-clicking the icon for the DVD-ROM drive where the installation disc is inserted. When the DVD-ROM window appears, double-click the Setup icon.

- 3 In addition to Corel VideoStudio Pro, the following programs and drivers are automatically installed:
 - Microsoft® .NET Framework 3.5 SP1
 - DirectX® 2007
 - Microsoft Visual C++® 2005 Redistributable Package
 - Microsoft Visual C++® 2008 Redistributable Package

- SmartSound[®]
- Adobe[®] Flash[®] Player
- QuickTime[®]

Note: LightScribe[®] is an optional feature that may be installed separately through the **Install Utilities** > **LightScribe** in the **Autorun** menu. Make sure that your optical drive has this capability.

To uninstall Corel VideoStudio Pro

- 1 On the Windows taskbar, click **Start** > **Control Panel**.
- 2 Click the **Add or Remove Programs** icon.
The **Add or Remove Programs** dialog box appears.
- 3 From the **Currently installed programs** list, choose **Corel VideoStudio Pro X3**, and click **Remove**.
- 4 Follow the instructions to remove Corel VideoStudio Pro from your computer.

Starting and quitting the application


You can start Corel VideoStudio Pro from the Windows desktop or Start menu, and quit the program from the application window.

To start the application

- Double-click the **Corel VideoStudio Pro X3** icon on the Windows desktop.

Note: You can also start Corel VideoStudio Pro from the list of programs on the Windows Start menu.


To quit the application

- Click the **Close** button  in the upper-right corner of the application window.

Accessing the Corel Guide

The Corel Guide provides the most up-to-date information and content for your application. You can find tips and tricks, download new styles and content for your projects, explore new ways to share your photos and videos, and access the latest updates for your application.


To access the Corel Guide

- On the upper right corner of the application window, click the **Help and product information** button . The **Corel Guide** window appears.

Learning how to use the application

You can learn how to use Corel VideoStudio Pro in various ways: by searching the Help, by accessing the tips and tricks in the Corel Guide, or by exploring the Corel Web site (www.corel.com).

To use the Help

- 1 On the application window, click the **Help and product information** button .
- 2 On the **Learn** tab of the **Corel Guide**, click **Launch Help**.
- 3 In the Help window, click one of the following tabs:
 - **Contents** — lets you browse through topics in the Help
 - **Index** — lets you use the keywords from the index to find a topic.
 - **Search** — lets you search the full text of the Help for a particular word or phrase. If you are looking for information about a specific tool or command, you can type keywords to display a list of relevant topics.

Preparing for video capture and editing

Video capture and editing are tasks that require a lot of computer resources. Your computer must be properly set up to ensure successful capturing and smooth video editing. Below are some tips on how to prepare and optimize your computer for capturing and editing.



- It is recommended that you close all other applications when working with Corel VideoStudio Pro. To avoid interruptions while capturing, it is best to turn off any automatically launched software, such as a screen saver.
- If you have two hard drives in your system, it is recommended that you install Corel VideoStudio Pro to your system drive (usually C:) and store captured videos on your other drive (usually D:).
- It is recommended that you store video files on a dedicated hard drive, preferably with Ultra-DMA/66 7200 RPM and 30 GB of free space.
- Make sure that Direct Memory Access (**DMA**) is enabled for your hard disk.
- Disable Write-Behind Caching on the hard drive that you use for video capture.
- Increase the Paging File (Swap File) size to twice your amount of RAM.

Registering Corel products

Registering Corel products is important to ensure that you receive timely access to the latest product updates, as well as valuable information about product releases. Registration also gives you access to free downloads, articles, tips and tricks, and special offers.

The Corel Guide provides you with information about registering your Corel products. You can also find information at www.corel.com/support/register.



To access registration information in the Corel Guide

- 1 Click the **Help and product information** button .
- 2 In the **Corel Guide**, click the **Product information and preferences** button , and choose **Register now** from the menu.

Updating the application

You can check for and install product updates. Updates provide important new information about your application.

To update the application

- 1 Click the **Help and product information** button .
- 2 In the Corel Guide, click the **Product information and preferences** button , and choose **Check for Updates**.



You can turn automatic program updates on or off by choosing **Message preferences** from the **Product information and preferences** menu and marking options in the dialog box.

You can find the application version information and serial number by choosing **About Corel VideoStudio Pro X3** from the **Product information and preferences** menu.

Corel Support Services

Corel Support Services can provide you with prompt and accurate information about product features, specifications, pricing, availability, services, and technical support options. For the most current information on available support and professional services for your Corel product, please visit www.corel.com/support.

About Corel

Corel is one of the world's top software companies, with more than 100 million active users in over 75 countries. We develop software that helps people express their ideas and share their stories in more exciting, creative, and persuasive ways. Through the years, we've built a reputation for delivering innovative, trusted products that are easy to learn and use, helping people achieve new levels of productivity. The industry has responded with hundreds of awards for software innovation, design, and value.

Our award-winning product portfolio includes some of the world's most widely recognized and popular software brands, including CorelDRAW[®] Graphics Suite, Corel[®] Painter[™], Corel DESIGNER[®] Technical Suite, Corel[®] Paint Shop Photo[™] Pro, Corel[®] VideoStudio[®], Corel[®] WinDVD[®], Corel[®] WordPerfect[®] Office, WinZip[®], and the recently released Corel[®] Digital Studio[™] 2010. Our global headquarters are in Ottawa, Canada, and our major offices are in the United States, the United Kingdom, Germany, China, Taiwan, and Japan.

Corel VideoStudio Pro Launcher





When you start Corel VideoStudio Pro, a startup screen appears. This screen, called the Corel VideoStudio Pro Launcher, lets you choose one of four video-editing modes.



To apply a widescreen format to the project and to the Preview Screen, click **Widescreen (16:9)**.

To access the Advanced Edit mode whenever you start Corel VideoStudio Pro, click **Do not show this Startup screen again**.

The four video-editing modes that are accessible from the Corel VideoStudio Pro Launcher let you perform different tasks, which are described in the following table:

Icon	Description
	<p>Advanced Edit provides a comprehensive set of tools for producing professional-looking video projects. You can capture and import media clips, do advanced video editing, and share your final production on a DVD or BD. You can also upload your finished video project to YouTube™ and Vimeo®.</p>
	<p>Easy Edit gives you the basic tools you need to produce slideshows and movies. You can import and edit media clips, create a movie, and share your final production as a video file, online content, or a video disc. You can also print snapshots and disc labels.</p>
	<p>DV-to-DVD Wizard lets you capture video, add a theme template, and then burn to DVD. This video-editing mode provides a fast and direct way to transfer your videos to a DVD.</p>
	<p>Burn provides advanced disc authoring and burning capabilities. Import your video projects and choose from interactive menu style templates that are complete with animations and sounds. You can also make your own disc menus with your favorite media clips for more customized DVD, BD, and AVCHD™ discs.</p>

DV-to-DVD Wizard

Using the **DV-to-DVD Wizard**, you can easily create a movie from your DV tape footage and burn to DVD.

This section contains the following topics:

- Scan for scenes
- Apply a template and burn to DVD

Scan for scenes

Scan the DV tape and select the scenes that you want to add to your movie.

To scan for scenes

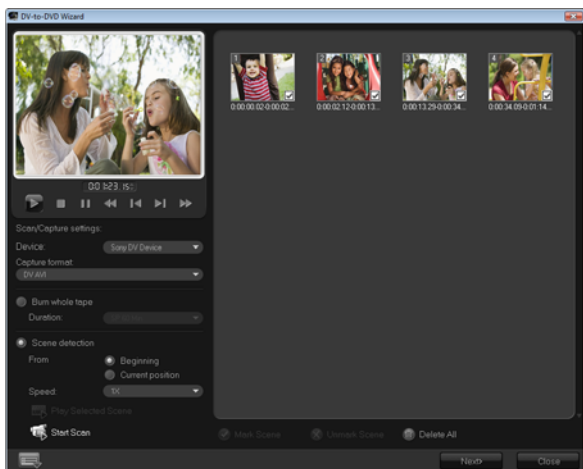
- 1 Connect your camcorder to your computer, and turn on the device. Set your camcorder to **Play** (or **VTR/VCR**) **mode**.
- 2 Select a recording device under **Device**.
- 3 Click the **Capture format** arrow to select a file format for captured videos.
- 4 Specify whether to burn all videos of the tape (**Burn whole tape**) or scan your DV tape (**Scene detection**).

To burn the whole tape

- 1 Select **Burn whole tape** and then specify the tape duration under **Duration**.
- 2 Click **Next** to apply the template and burn to DVD.

To use scene detection

- 1 After selecting **Scene detection**, choose whether to scan the tape from the **Beginning** or **Current** position.
 - **Beginning**: Scans the tape for scenes from the beginning. The tape will automatically be rewound if the tape position is not in the beginning.
 - **Current position**: Scans the tape for scenes from the current tape position.
- 2 Specify the scan speed and click **Start Scan** to begin scanning the DV device for scenes. Scenes are video segments that are distinguished by date and time stamps on the DV tape.




DV-to-DVD Wizard

- 3 In the Storyboard View, select each scene that you want to include in your movie, and click **Mark Scene**.



- 4 Click **Next**.


Note: To save and import the scanned file without having to re-scan it, click  and select **Save DV Quick Scan Digest**. To manage a large number of tapes, click **Save DV Quick Scan Digest as HTML**. This feature lets you print the HTML file and attach it with your tapes.

Apply a template and burn to DVD

Choose a style template, specify settings, and burn your movies to DVD.

To apply a style template and burn to DVD

- 1 Specify a volume name and recording format for your movie.
Note: If you have more than one burner installed on your computer, or if the default drive is not a burner, specify the burner that you want to use in the **Advanced Settings** dialog box.
- 2 Choose a style template from one of the available presets to apply to your movie, and then select the output video quality.
- 3 To customize the theme template text, click **Edit Title**.

- 4 In the **Begin** tab of the **Edit Template Title** dialog box, double-click the text that you want to modify. You can also modify attributes such as font, color or shadow settings.
- 5 Click the **End** tab to modify the text. Click **OK**.
- 6 To mark your video clips with date information, click **Add as title** in **Video date information**. Select **Entire video** if you want the video to appear from beginning to end, or specify the duration.
- 7 Click  to burn your movie file to a disc.

Note: If the movie is too big to fit onto a DVD, click **Fit & Burn**.

Advanced Edit

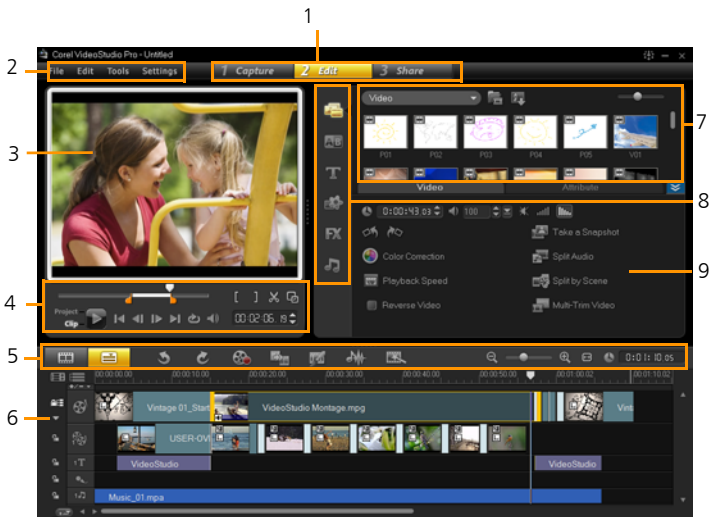
Corel VideoStudio Pro provides a hands-on workflow to produce professional-looking videos, giving you the liberty to customize all the elements in your video project.

This section introduces you to the Corel VideoStudio Pro interface and briefly explains the steps involved in creating a movie.

This section contains the following topics:

- Interface
- Step Panel
- Menu Bar
- Navigation Panel
- Toolbar
- Project Timeline
- Options Panel
- Library

Interface



- 1 - Step Panel
Contains the **Capture**, **Edit**, and **Share** buttons, which correspond to the different steps in video editing.
- 2 - Menu Bar
Contains the **File**, **Edit**, **Tools**, and **Settings** menus, which provide different sets of commands.
- 3 - Preview Window
Shows the appearance of the current project or clip being played.
- 4 - Navigation Panel
Provides buttons for playback and for precision trimming of clips. In the **Capture Step**, this panel also acts as the device control for the DV or HDV camcorder.
- 5 - Toolbar

Contains buttons for switching between two project views, such as Storyboard View and Timeline View, and for choosing other quick settings.

- 6 - Project Timeline
Displays all the clips, titles, and effects that are used in your project.
- 7 - Library
Stores and organizes all of your media clips.
- 8 - Library Panel
Filters your library according to media type — Media, Transitions, Title, Graphic, Filter, and Audio.
- 9 - Options Panel
Contains controls, buttons, and other information that you can use to customize the settings of the selected clip. The contents of this panel vary, depending on the nature of the media clip selected.

Step Panel

Corel VideoStudio Pro simplifies the process of creating movies into three simple steps. Click the buttons in the **Step Panel** to switch between steps.

1 Capture

Media clips can be recorded or imported directly to your computer's hard drive in the **Capture Step**. This step allows you to capture and import video, photo, and audio clips.

2 Edit

The **Edit Step** and the Timeline are the heart of Corel VideoStudio Pro, where you can arrange, edit, trim and add effects to your video clips.

3 Share

The **Share Step** lets you export your finished movie to tape, a DVD, or the Web.

Menu Bar

The **Menu Bar** provides various commands for customizing Corel VideoStudio Pro, opening and saving movie projects, working with individual clips, and more.



File Edit Tools Settings

Navigation Panel

The **Navigation Panel** is used to preview and edit the clips used in your project. Use the **Navigation Controls** to move around a selected clip or your project. Use the **Trim Markers** and **Scrubber** to edit your clips.



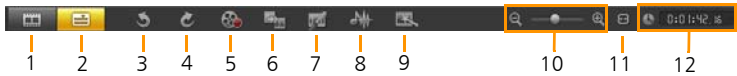
- 1 - Project/Clip Mode
Specifies a preview of the entire project or of a selected clip only.
- 2 - Play
Plays, pauses, or resumes the current project or a selected clip.
- 3 - Home
Returns to the starting segment or cue.
- 4 - Previous
Moves to the previous frame.
- 5 - Next
Moves to the next frame.
- 6 - End

Moves to the end segment or cue.

- 7 - Repeat
Loops playback.
- 8 - System Volume
Lets you adjust the volume of your computer's speakers by dragging a slider.
- 9 - Timecode
Lets you jump directly to a part of your project or selected clip by specifying the exact timecode.
- 10 - Enlarge Preview Window
Increases the size of the Preview Window.
- 11 - Split Clip
Splits the selected clip. Position the **Scrubber** to where you want the clip to be split, and then click this button.
- 12 - Mark-in/Mark-out
Sets a preview range in the project, or sets the start and end points for trimming a clip.
- 13 - Scrubber
Lets you scrub through the project or clip.
- 14 - Trim Handles
Lets you drag to set a preview range in the project or to trim a clip.

Toolbar

The toolbar allows you to easily access buttons for editing. You can also change your project view, zoom in and out on the Project Timeline, and launch different tools that can help you edit efficiently.



- 1 - Storyboard View
Displays your media thumbnails in chronological order.
- 2 - Timeline View
Lets you perform frame-accurate editing of your clips on separate tracks.
- 3 - Undo
Undoes a previously done function.
- 4 - Redo
Redoes a previously undone function.
- 5 - Record/Capture Option
Shows the Record/Capture Option panel, where you can capture video, import files, record voice-overs and take snapshots all in one place.
- 6 - Batch Convert
Converts multiple video files from one video format to another.
- 7 - Painting Creator
Launches the Painting Creator panel where you can use painting and drawing features to create image and animation overlays.
- 8 - Sound Mixer
Launches the Surround Sound Mixer and the multitrack Audio Timeline, which lets you customize your audio settings.

- 9 - Instant Project
A sample project that can be inserted into the Project Timeline to let you quickly choose menu style templates for your project. The sample project can also be used as a template for video projects by using the Replace Clip feature.
- 10 - Zoom Controls
Lets you Adjust your view of the Project Timeline by using the zoom slider and buttons.
- 11 - Fit Project in Timeline Window
Adjusts your project view to fit the entire span of your Timeline.
- 12 - Project Duration
Shows the duration of the project.

Project Timeline

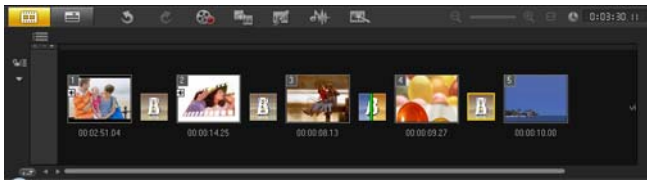
The Project Timeline is where you assemble the media clips to use in your video project.

Two types of views are displayed in the Project Timeline: **Storyboard View** and **Timeline View**. To switch between the different views, click the buttons at the left side of the Toolbar.



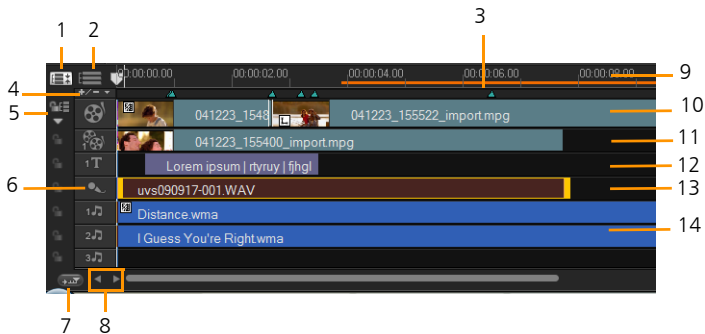
Storyboard View

The fastest and simplest way to organize photos and video clips in a project is to use the Storyboard View. Each thumbnail in the storyboard represents a photo, video clip, or a transition. Thumbnails are shown in the order in which they appear in your project, and you can drag thumbnails to rearrange them. The duration of each clip is shown at the bottom of each thumbnail. In addition, you can insert transitions between video clips, and you can trim a selected video clip in the Preview Window.



Timeline View

Timeline View gives you the most comprehensive display of the elements in your movie project. It divides a project into separate tracks for video, overlay, title, voice, and music. The image shows a multi-track timeline with various elements and their durations.



- 1 - Show All Visible Tracks
Displays all tracks in your project.
- 2 - Track Manager
Lets you manage the tracks visible in the Project Timeline.
- 3 - Selected range
Displays a color bar that represents the trimmed or selected part of a project.
- 4 - Add / Remove Chapter or Cue
Lets you set chapter or cue points in your movie.
- 5 - Enable / Disable Ripple Editing
Locks or unlocks tracks of any movement while you insert clips.
- 6 - Track buttons
Lets you select individual tracks.
- 7 - Automatically scroll timeline
Enables or disables scrolling along the Project Timeline when you preview a clip that extends beyond the current view.
- 8 - Scroll controls
Lets you move around your project by using the left and right buttons or dragging the Scroll Bar.
- 9 - Timeline ruler
Helps you determine clip and project length by displaying the project's timecode increments in hours:minutes:seconds:frames.
- 10 - Video Track
Contains video, photo, and color clips, and transitions.
- 11 - Overlay Tracks
Contains overlay clips, which can be video, photo, graphic, or color clips.
- 12 - Title Track

Contains title clips.

- 13 - Voice Track

Contains voice-over clips.

- 14 - Music Track

Contains music clips from audio files.



To move between tracks, click the track buttons. You can use the mouse wheel to scroll through the Project Timeline.



When the pointer is at the **Zoom controls** or **Timeline ruler**, you can use the wheel to zoom in and out of the Project Timeline.

Options Panel

The **Options Panel** changes according to the program's mode and the step or track that you are working on. The Options Panel may contain one or two tabs. The controls and options in each tab vary, depending on the selected clip.

When you start Corel VideoStudio Pro, the Edit Step appears, and the video clip thumbnails are displayed in the Library. You can open the Options Panel by double-clicking a clip or clicking the **Options** button.

Library

The **Library** is a storage depot for everything you need to create a movie: video clips, photos, transitions, titles, filters, color clips, and audio files.

To view a media clip category in the Library

- 1 Choose options in the **Library Panel** to display the corresponding media clips.

- 2 In the **Gallery** drop-down list, choose a subcategory to display media clips from each folder.

To add media clips to the Library

- 1 Click **Add** to locate a media clip to insert in the Library.
- 2 Select the file.

You can also import Corel VideoStudio Pro projects and media files from your hard drive into the Corel VideoStudio Pro Library. To do this, use the **Project Video** and **Windows Media Library** options from the Library drop-down menu.

Note: If you are using the Windows 7 or Windows Vista operating system, Corel VideoStudio Pro automatically synchronizes with your media library during program startup. The library content cannot be modified from within Corel VideoStudio Pro. Instead, you must use the features that are associated with your operating system.

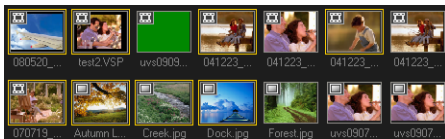
- 3 Click **Open**.

Note: You can also drag and drop files from Windows Explorer straight to the Library.



Right-click a clip in the Library to view the clip's properties as well as copy, delete, or Split by Scene.

You can also trim a clip in the Library by using the **Trim markers**. Hold **[Ctrl]** or **[Shift]** to select multiple clips.



To delete media clips from the Library

- 1 Select the clip to remove from the **Library**, then press [**Delete**].
Or, right-click the clip in the Library and select **Delete**.
- 2 When prompted, verify whether you want to delete the thumbnail from the Library.

Note: Back up your Library to avoid losing important library information and media clips. This action will create a backup of the virtual media files information of your current library in the directory you will specify. You can find this option in **Settings: Library Manager - Export Library** and specify your target location.

You can also import your exported Library to restore media files and other library information. Click on **Settings: Library Manager - Import Library** and find the directory you specified.

Note: To reset your Library to the default settings, select **Settings: Library Manager - Reset Library**.

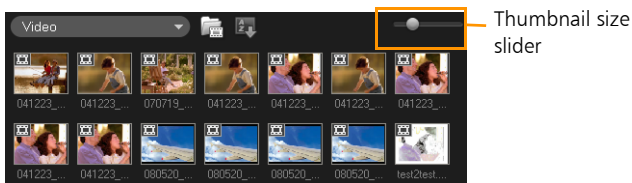
- 3 To automatically locate and relink the files in your library, go to File, choose Relink. A notification, All clips have been relinked successfully, will be displayed.

Saving Clips to the Library

When you are creating multiple title clips that share the same attributes such as font type and style, it is good practice to store a copy of your title clip in the Library. Right-click the title clip in the Timeline and click **Add to My Favorites**. This way, you can easily duplicate the title clip (by dragging it from My Favorites in the Library back onto the Title Track) and then change the title.

Thumbnail Views

Corel VideoStudio Pro allows you to adjust the size of thumbnails for easier access to the different media clips in the Library.



To adjust thumbnail size

Move the slider to the left or right to decrease and increase thumbnail size. In your next session, Corel VideoStudio Pro will use the last-selected thumbnail size as the default.

Library Organizer

The **Library Organizer** organizes your custom Library folders. These folders help you store and manage all kinds of media files.

To use the Library Organizer


- 1 Select **Library Organizer** from the **Gallery** drop-down list. You can also click on **Settings: Library Manager - Library Organizer**.
- 2 Select a media type from the **Available custom folders** list.
- 3 Click **New** to display the **New Custom Folder** dialog box and create a new folder. Specify a **Library Folder name** and a **Description**. Click **OK**.
Click **Edit** to rename or modify the description of a selected custom folder.
Click **Delete** to remove a selected custom folder from the **Library**.
- 4 Click **Close**.

Sorting clips in the Library

To arrange clips in the Library, click  in the Library, then select **Sort by Name** or **Sort by Date**.

The way video clips are sorted by date depends on the file format. DV AVI files (i.e., AVI files captured from DV camcorders) will be arranged by order of the shooting date and time of the footage. Other video file formats will be sorted by order of file date.



To toggle between ascending and descending order, click  in the Library then select **Sort by Name** or **Sort by Date** again.

Starting a new movie project

When you start Corel VideoStudio Pro, it automatically opens a new project and lets you start creating your movie production. New projects are always based on the default settings of the application. To check what these settings are, click **Settings: Project Properties**.

Project settings determine how your movie project is rendered when you preview it. **Rendering** is the process by which Corel VideoStudio Pro converts video, titles, sounds, and effects into a continuous stream of data which can be played back in your computer. To modify the project settings, select **Settings: Project Properties**. Choose the appropriate setting options in the **Project Properties** dialog box. and click **OK**.

When you capture or insert your first video clip into the project, Corel VideoStudio Pro automatically checks the properties of the clip and your project. If properties such as file format, frame size, etc. are not identical, Corel VideoStudio Pro automatically adjusts the project settings to match the clip's properties. Changing the project settings to conform with clip properties allows Corel VideoStudio Pro to perform the **SmartRender** function.

This section contains the following topics:

- Setting your preferences
- Setting project properties
- Adding clips
- Previewing
- Undoing and redoing actions

- Showing and hiding grid lines
- Saving projects
- Saving projects by using Smart Package

Setting your preferences

Customize the program's working environment through the **Preferences** dialog box. You can specify a working folder for saving files, set undo levels, choose preferred settings for program behavior, enable Smart Proxy, choose the default transition effect for your project and more. To open the **Preferences** dialog box, select **Settings: Preferences [F6]**.

Setting project properties

Project Properties serve as your template for previewing your movie projects. The project settings in the Project Properties dialog box determine the appearance and quality of a project when it is previewed on-screen. To customize project settings, select **Settings: Project Properties**.

When customizing project settings, it is recommended that you make the settings the same as the attributes of the video footage that will be captured to avoid distorting the video images and have smooth playback without jumping frames.

When you customize project properties to be the same as the desired output settings for your project (for instance, setting project properties to DVD settings if you will output the project to a DVD disc), you can have more accurate previews of your final movie.

Adding clips

There are five ways to add clips to your project:

- Capture video clips from a video source. The video clips will be inserted onto the Video track.
- Drag clips from the Library onto the appropriate tracks.
- Drag clips from File Explorer onto the appropriate tracks.
- In the Library, right-click on the thumbnail, select **Insert to:** and choose which track to insert media file.
- Right-click on the Timeline and choose the type of media you want to add from the right-click menu.

Copying and pasting clip attributes

You can use the attributes of one clip and apply it to a different clip on your movie project. When working with audio, you can also add filters to audio clips in the **Music & Voice** and **Auto Music** tabs of the Options Panel in the **Edit Step**.

To apply all the attributes of one clip to another clip

- 1 Right-click the source clip then select **Copy Attributes**.
- 2 Right-click the target clip then select **Paste Attributes**.

Previewing

The **Play** button in the **Navigation Panel** serves two purposes: for playback of your entire project or a selected clip. To play back, click **Project** or **Clip**, then click **Play**.



While working on your project, you will want to preview your work frequently to see how your project is progressing. **Instant Playback** allows you to quickly preview changes in your project without the need to create a temporary preview file. Playback quality will be dependent on your computer's resources.

Setting a preview range

You may choose to play only a part of your project. The selected range of frames to preview is referred to as the **preview range**, and it is marked as a colored bar in the Ruler Panel.



To play the preview area only

- 1 Use the **Trim Markers** or the **Mark-in/out** buttons to select the preview range.
- 2 To preview the selected range, select what you want to preview (**Project** or **Clip**), then click **Play**. To preview the entire clip, hold **[Shift]**, then click **Play**.

Undoing and redoing actions


You can undo or redo the last set of actions that you performed while working on your movie by clicking **Undo [Ctrl+Z]** or **Redo [Ctrl+Y]** in the toolbar. You can adjust the number of undo levels in the **Preferences** dialog box.

Showing and hiding grid lines

You can use grid lines to guide you when repositioning or resizing photos and videos or when adding titles to your movie.

- To show grid lines in the **Edit** step, double-click a clip to display the Options Panel. Select **Attribute** tab. Select **Distort clip** then select **Show grid lines**.



Click  to adjust grid line settings.

Saving projects

Save your editing projects by selecting **File: Save [Ctrl + S]**. Corel VideoStudio Pro project files are saved in *.vsp file format.

To automatically save your work, select **Settings: Preferences - General** then select **Automatically save project every:** and specify the time interval between saves. This setting is set at 10 minutes by default.

To open an existing project, select **File: Open Project [Ctrl + O]**. To create a new project again, select **File: New Project [Ctrl + N]**.



Save your project frequently to avoid accidental loss of work.

Saving projects by using Smart Package

Packaging a video project is useful if you want to back up your work or transfer your files for sharing or for editing in a laptop or another computer.

To save projects by using Smart Package

- Select **File: Smart Package** and specify the **Folder path**, **Project folder name** and **Project file name** and click **OK**.



You need to save your project first before you can proceed with this operation.

Capture

Corel VideoStudio Pro lets you capture or import video from DVD-video, DVD-VR, AVCHD, BDMV discs including DV or HDV camcorders, analog capture cards for analog camcorders, mobile devices as well as analog and digital TV capture devices.



This section contains the following topics:

- The Capture Step Options Panel
- Capturing Video
- DV Quick Scan
- Importing from digital media
- Importing from mobile devices

The Capture Step Options Panel

In the **Capture Step**, Corel VideoStudio Pro displays the Library and the Capture Options Panel where different media capture and import methods are available.

The table below discusses the options in the Capture Step.



Click **Capture Video** to capture video footage and photos from your camcorder into your computer.



Click **DV Quick Scan** to scan your DV tape and select the scenes you want to add to your movie.



Click **Import from Digital Media** to add media clips from a DVD-Video/DVD-VR, AVCHD, BDMV formatted disc or from your hard drive. This feature also allows you to import video directly from AVCHD, BD or DVD camcorders.



Click **Import from Mobile Device** to add photos or video from mobile devices.

Capturing Video

The steps on how to capture are similar for all types of camcorders except for the available capture settings in the Capture Video Options Panel that can be selected for each type of source.

To capture video and photos from your camcorder

- 1 Connect your camcorder to your computer and turn on the device. Set it to **Play** (or **VTR / VCR**) mode.
- 2 In Capture Options Panel, click **Capture Video**.
- 3 Select your capture device from the **Source** drop-down list.

- 4 Select a file format to use for saving your captured video from the **Format** drop-down list. Browse the folder location where the files will be saved under **Capture folder**.
Note: Click **Options** to customize capture settings specific to your video device.
- 5 Scan your video to search the part for capture.
Note: If you are capturing video from a DV or HDV camcorder, use the **Navigation Panel** to play your videotape.
- 6 Click **Capture Video**, when your video for capture is already on cue. Click **Stop Capture** or press **[Esc]** to stop capturing.
- 7 To capture a photo from the video footage, pause the video on the desired photo then click **Take a snapshot**.
Note: When your camcorder is in Record mode (usually named **CAMERA** or **MOVIE**), you can capture live video.
Note: The available settings in the **Video Properties** dialog box vary, depending on the capture file format that you have chosen.

Capture Video Options Panel

- **Duration:** Sets the length of time for the capture.
- **Source:** Displays the detected capture device and lists other capture devices installed in your computer.
- **Format:** Gives you a list of options where you select a file format for saving your captured video.
- **Capture folder:** This feature allows you to specify a folder where you want your captured files to be saved.
- **Split by Scene:** Automatically separates captured video into several files based on changes in shooting date and time when capturing video from a DV camcorder.

- **Options:** Displays a menu allowing you to modify your capture settings.
- **Capture Video:** Transfers video from your source to your hard drive.
- **Take a Snapshot:** Captures the displayed video frame as a photo.

Direct video capture to MPEG format

Corel VideoStudio Pro supports real-time capture from DV, analog, or any video source to MPEG-2 format.

To capture video in MPEG-2 format

- 1 In **Source**, choose your video source.
- 2 Specify or browse for the destination folder where you want your clips to be stored in **Capture folder**.
- 3 Click **Options** and select **Video Properties**. In the dialog box that opens, select a profile in the **Current Profile** drop-down menu.
- 4 Click **OK**.
- 5 Click **Capture Video** to start capturing and **Stop Capture** to end your capturing session. Your media clip will automatically be stored as MPEG-2 format in the folder you specified.

Split by Scene

A single DV tape may contain several videos that were shot at different times. Corel VideoStudio Pro automatically detects these segments and saves them as separate files.

To use Split by Scene option in Capture Step

- 1 Select the **Split by Scene** option in the Options Panel.
- 2 Click **Capture Video**. Corel VideoStudio Pro will automatically look for the scenes according to their shooting date and time and capture them as separate files.

Digital Video (DV)

To capture Digital Video (DV) in its native format, select **DV** from the **Format** list in the Options Panel. This saves the captured video as a DV AVI file (.avi).



You can also use the **DV Quick Scan** option to capture DV video DV AVI Type-1 and Type-2

When capturing DV, click **Options** in the Options Panel and select **Video Properties** to open a menu. In the Current Profile, choose whether to capture DV as **DV Type-1** or **DV Type-2**.

Controlling the DV camcorder with the Navigation Panel

When capturing from a DV camcorder, use the **Navigation Panel** to scan your footage and locate the scenes you want to capture.



Shuttle Slider

Drag to move forward and back through the footage at variable speeds. This is a quick way to find scenes you are looking for in your video.

High Definition Video (HDV)

You can capture high definition video using the following methods:


- For HDV camcorders, use the **Capture video** feature.
- For AVCHD and BD devices, use **Import from digital media**.

To capture video from an HDV camcorder

1 Connect your HDV camcorder to your computer's IEEE-1394 port using the IEEE-1394 cable.

2 Turn on your camcorder and switch it to Play/Edit mode and make sure that your HDV camcorder is switched to HDV mode.

Note: For Sony HDV camcorders, flip open the LCD screen and see if **HDVout I-Link** is on the LCD screen to check if the camera is set to HDV mode. If you see **DVout I-Link**, press **P-MENU** at the lower right of the screen. In the menu, press **MENU> STANDARD SET> VCR HDV/DV** and press **HDV**.

3 Click **Capture Step** and click  to capture video.

Digital TV or DVB-T video

Before capturing, ensure that the DVB-T source is connected via a compatible capture card installed on your computer.

To capture DVB-T video

1 Click **Capture Step** and select **Capture Video**.

2 Select **Digital TV Source** from the **Source** drop-down list.

3 Click **Options** and select **Video Properties**. The **Video Properties** dialog box will appear.

4 In the **Input Source** tab, select **TV** from the **Input source** drop-down list. Click **Ok**.

5 In **Channel List**, click **Start Scan** to start scanning for channels.

Note: DVB-T channels are not automatically scanned. Make sure to manually scan the channels first before capturing.

- 6 Click **Capture Video**.
- 7 Click **Yes** when prompted if you want to start capturing and automatically recovering DVB-T video.
- 8 Follow the remaining steps as described in the procedure for capturing videos.

Analog video

When footage is captured from analog sources such as VHS, S-VHS, Video-8, or Hi8 camcorders/VCRs, it is converted to a digital format that can be read and stored by the computer. Before capturing, choose the desired file format to use for saving the captured video in the Options Panel's **Format** list.

Click **Options** then select **Capture Options** to choose how you want footage to be captured.

To specify the type of video source you are capturing from, click **Options** then select **Video Properties**. In the dialog box that opens, you can customize the following capture settings:

- In the **Input Source** tab, choose whether you are capturing NTSC, PAL, or SECAM video and select the **Input source** (TV, Composite, or S-Video).
- In the **Color Manager** tab, you can fine tune the video source to ensure good quality captures.
- In the **Template** tab, set the frame size and compression method to use for saving the captured video.

TV footage

Corel VideoStudio Pro allows you to capture TV footage through a TV tuner. Capture a segment of your favorite television show on regular TV or cable then save it in your hard drive in AVI or MPEG.

To capture TV footage

- 1 Select your TV tuner device from the **Source** drop-down list.
- 2 Click **Options: Video Properties** to open the **Video Properties** dialog box. If needed, adjust the settings accordingly.
Click the **Tuner Information** tab to choose Antenna or Cable, scan available channels in your region, and more.
- 3 In the **Channel** box, specify the channel number from which to capture.

DV Quick Scan

Use this option to scan a DV device for scenes to import. To use **DV Quick Scan**, refer to the first step in the **DV-to-DVD Wizard** section.

In DV Quick Scan, you can add the date and time of your video. After scanning your DV tape, click **Next**. This will then display the **Import Settings** dialog box. Select **Insert to Timeline** and choose **Add video date information as title**. If you want the shooting date to appear in the entire duration of the video, select **Entire video** or only during a specified time.



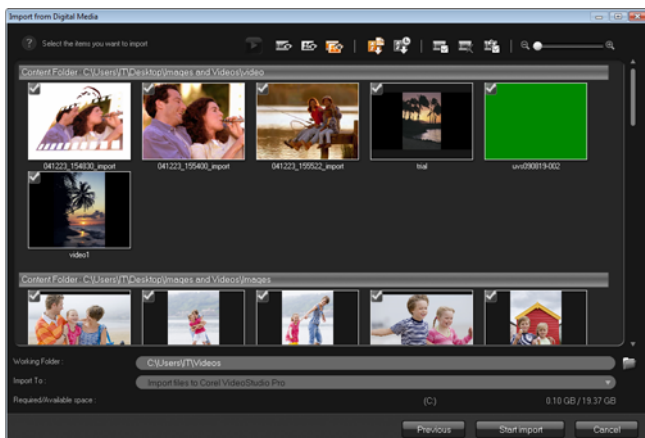
Video date information

Importing from digital media

You can import DVD/DVD-VR, AVCHD, BDMV video and photos from a disc, hard drive, memory card or camcorder into Corel VideoStudio Pro.

To import digital media

- 1 Click **Capture** Step then click **Import from Digital Media**.
- 2 Click **Select Import Source Folders** and browse for folders that contain your digital media and click OK.
- 3 Click **Start** and the **Import from Digital Media** dialog box appears.



- 4 Choose the media clips you want to import and click **Start import**. All imported videos will be added to the thumbnail list in the Library.

To enable timecode retrieval for AVCHD

- 1 In the **Capture Step Options Panel**, click **Import from Digital Media**.
- 2 Select the thumbnail of the video file. Click **Start import** to launch **Import Settings**.
- 3 In **Import destination**, select **Insert to Timeline** or select **Add video date information as title**.
- 4 Choose **Entire video** to import the timecode of video file to appear as a title spanning the entire duration of the video. Choose **Duration** to import the timecode as a title within a specified duration. Click **OK** to apply the settings.

Note: You can apply the same settings for all video files for importing. Click the **Apply the setting and never ask me again** box or press **[F6]** to turn on the settings.


Importing from mobile devices

You can import media clips from your mobile devices like Nokia and Windows Mobile®-based phones, iPod and PSP to your project. You can also use this feature to import from memory cards, digital still cameras and DSLRs.







Make sure your device is properly connected and it can be recognized by Corel VideoStudio Pro.

To import videos from a mobile device

- 1 In Capture Step Options Panel, click **Import from Mobile Device**. The **Insert Media File from Hard Drive/External Device** panel will launch.
- 2 Select from the list of devices. Click  to display all your media files in your device. The thumbnails of the media files contained in the device appears in the panel.
Note: Click **Settings** to set where to browse for files and where to save imported and exported files.
- 3 Select the media file and click **OK**. The **Import Settings** dialog box will appear.
- 4 You can apply the following settings:
 - Check/uncheck **Capture to Library**. Select **Library Folder** from the drop-down list.
 - Check/uncheck **Insert to Timeline**. You have the option to apply timecode as title by checking **Add video date information as title**. Choose between **Entire video** and **Duration**. If **Duration** is chosen, set value in seconds.
 - Click **OK**.

To trim video clips before inserting into your project

- 1 Select the clip you want to trim and click  to preview the clip.
- 2 At the bottom of the dialog box, drag the **Scrubber** until you locate the point in the video clip that you want to set as the start of the clip. Click .
- 3 Drag the **Scrubber** until you locate the point in the video clip that you want to set as the end of the clip. Click .
- 4 Click  to watch your trimmed clip. When finished, click **OK**.

Edit

The **Edit Step** is where you put together all the elements of your project. You can select videos, transitions, titles, graphics, effects, and audio clips from the Library and add them to your Timeline. Using the Options Panel, you can further customize the attributes of each element that you use.

This section contains the following topics:

- Working with clips
- The Edit Step Options Panel
- Assets and Effects
- Taking snapshots in the Edit Step
- Ripple Editing
- Editing with Smart Proxy
- Converting multiple files
- Enhancing clips
- Adding cues and chapters
- Working with Overlays
- Painting images and animations using Painting Creator
- Working with Audio

Working with clips

Clips whether audio, video, or photos are the foundation of your project and manipulating them is the most important skill you can master.

Adding video clips

There are several ways of inserting video clips to the Timeline:

- Select a clip in the Library and drag and drop it to the Video Track or Overlay Track. Multiple clips can be selected by pressing **[Shift]** or **[Ctrl]**.
- Right-click a clip in the Library then select **Insert To: Video Track** or **Insert To: Overlay Track**.
- Select one or more video files in Windows Explorer then drag and drop to the Video Track or Overlay Track.
- To insert a clip from a file folder directly to the Video Track or Overlay Track, right-click the Timeline, select **Insert Video** and locate the video to use.



Aside from video files, you can also add video from DVD or DVD-VR formatted discs.

Adding photos

Photo clips are added to the Video Track the same way as video clips. Before you start adding photos to your project, determine first the photo size that you want for all your photos. By default, Corel VideoStudio Pro adjusts the size to keep the photo's aspect ratio.

To make the size of all inserted photos the same as your project's frame size

- 1 Select **Settings: Preferences - Edit**.
- 2 Change the **Image resampling option** default to **Fit to project size**.

Color

Color clips are usually added as backgrounds and are useful for titles. Adding of color clips on the Video Track follows the same procedure as that of video and image clips. For more information about adding color clips, see **Adding Color Clips** under **Library in Edit Step**.

Playback speed

You can modify the playback speed of your videos. Set your video in slow motion to emphasize a movement, or set it to play at lightning speed and give your movie a comical air.

To adjust the speed attributes for your video clip

- 1 Click **Playback Speed** in the **Options Panel** of the **Edit Step**.
- 2 Drag the slider according to your preferences (i.e., slow, normal or fast), or enter a value. The higher the value you set, the faster the playback of your clip. (Values range from **10-1000%**). You can also specify a set duration for the clip in **Time stretch**.
- 3 Click **Preview** to view the results of your settings then click **OK** when finished.



Hold **[Shift]** then drag the end of the clip on the Timeline to change the playback speed.

The black arrow means you are trimming or extending the clip, while the white arrow means that you are changing the playback speed.



Reversing video playback

Reverse the playback of the video by selecting **Reverse video** in the Options Panel.

Replacing a clip

Media clips in the Timeline can be replaced in its current position. When you replace a clip, the attributes of the original clip are applied to new clip. To replace a clip, drag the video to the Timeline and hold the **[Ctrl]** key.

To replace a clip

- 1 Right-click a media clip in the Timeline that you want to replace.
- 2 Choose **Replace clip** from the right-click menu and the **Replace/relink clip** dialog box appears.
- 3 Browse for the media clip you want in place of the clip in the Timeline and click **Open**. The clip in the Timeline will automatically be replaced with the one you chose.

Note: In replacing clips, the new clip must be longer than the clip to be replaced in the Timeline.



Trimming a clip


The best part of editing your movie on your computer is the ease with which you can split and trim your clips with frame accuracy.

To split a clip into two

- 1 In Storyboard View or Timeline View, select the clip you want to split.
- 2 Drag the **Scrubber** to the point where you want to split the clip.



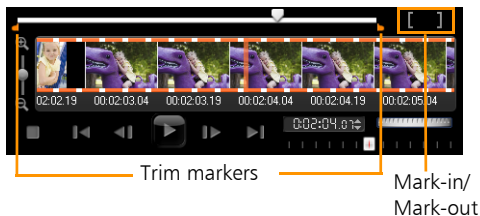
Note: Click  or  to set the cutting point more precisely.

- 3 Click  to split the clip into two clips. To remove one of these clips, select the unwanted clip and press **[Delete]**.

To trim a clip with the Trim markers using Single Clip Trimmer

- 1 Double-click a video clip in the Library or right-click on a video clip and choose **Single Clip Trim** to launch the **Single Clip Trim** dialog box.
- 2 Click and drag the Trim markers to set the Mark-in/Mark-out points on the clip.

- For more precise trimming, click on a Trim marker, hold it, and use the left or right arrow keys on your keyboard to trim one frame at a time. The Mark-in/Mark-out points can also be set by pressing [F3] and [F4], respectively.



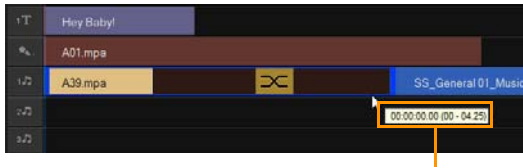
- To preview the trimmed clip only, press [Shift + Space] or hold [Shift] and click the **Play** button.

Note: You can also use **Zoom** controls to display each frame of your video on the Timeline and trim one frame at a time. The **Scroll Bar** makes navigating through your project quicker and easier. A wheel mouse can also be used to scroll, and to zoom by pressing [Ctrl].

To trim a clip directly on the Timeline

- Click a clip on the **Timeline** to select it.
- Drag the **Trim markers** on either side of the clip to change its length. The Preview Window reflects the position of the Trim marker in the clip.

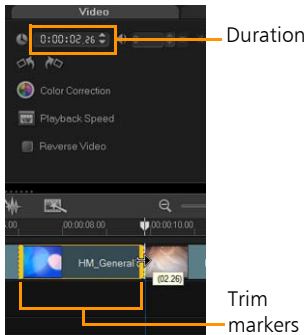
Note: Instant timecode tip is a feature of Corel VideoStudio Pro that allows you to add clips with a specific timecode. It appears while trimming and inserting overlapping clips on the Timeline, enabling you to make adjustments based on the timecode shown. For example, the instant timecode tip appears with the format 00:00:00.00 (00 - 04.25). 00:00:00.00 indicates the current timecode where the selected clip is located. The (00 - 04.25) start-end range represents the duration of one overlapping clip with the previous clip and another overlapping with the next clip.



Instant timecode tip

To trim a clip using the Duration box

- 1 Click a clip on the **Timeline** to select it.
- 2 Click the timecode in the **Duration** box in the Options Panel and enter the desired clip length.



Note: Changes made in the video **Duration** box only affect the Mark-out point. The Mark-in point remains unchanged.

Split by Scene


Use the Split by Scene feature in the Edit Step to detect different scenes in a video file and automatically break it down into several clip files.

The way Corel VideoStudio Pro detects scenes depends on the type of video file. In a captured DV AVI file, scenes can be detected in two ways:

- **DV Recording Time Scan** detects scenes according to their shooting date and time.
- **Frame Content** detects content changes, such as motion change, camera shifting, brightness change, etc., and splits them into separate files.

In an MPEG-1 or MPEG-2 file, scenes can only be detected based on content changes (i.e., by **Frame Content**).

To use Split by Scene on a DV AVI or MPEG file

- 1 Go to the **Edit** Step and select a captured DV AVI file or an MPEG file on the Timeline.
- 2 Click  **Split by Scene** in the Options Panel. This will open the **Scenes** dialog box.
- 3 Choose your preferred scan method (**DV Recording Time Scan** or **Frame Content**).
- 4 Click **Options**. In the **Scene Scanning Sensitivity** dialog box, drag the slider to set the **Sensitivity** level. A higher value means more precision in the scene detection.
- 5 Click **OK**.
- 6 Click **Scan**. Corel VideoStudio Pro then scans through the video file and lists all the detected scenes.

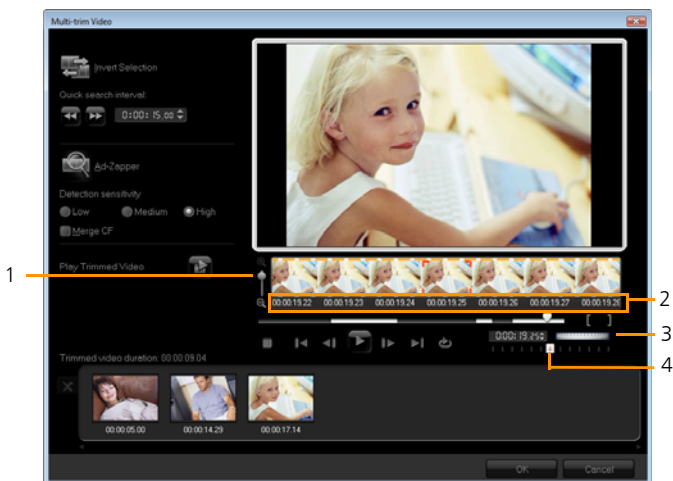
You may merge some of the detected scenes into a single clip. Simply select all the scenes that you want to join together then click **Join**. The plus sign (+) and a number indicates how many scenes are

merged into that particular clip. Click **Split** to undo any Join actions that you have done.

7 Click **OK** to split the video.

Multi-trimming your video



The **Multi-trim Video** feature is another method for breaking down a clip into multiple segments. While **Split by Scene** is automatically done by the program, **Multi-trim Video** gives you complete control over the clips you wish to extract, making it even easier to include only the scenes you want.




- 1 - Timeline zoom
Drag up and down to sub-divide a video clip into frames per second.
- 2 - AccuCut Timeline
Scan a video clip frame by frame for accurate mark-in and mark-out positions.

- 3 - Jog Wheel
Use to scroll to different parts of the clip.
- 4 - AccuCut Timeline
Preview the clip at different playback speeds.

To trim a video file into multiple clips

- 1 Go to the Edit Step and select the clip that you want to trim.
- 2 Double click the clip to open the Options Panel.
- 3 Click **Multi-trim Video** in the **Options Panel**.
- 4 View the whole clip first by clicking **Play** to determine how you want to mark segments in the **Multi-trim Video** dialog box.
- 5 Choose the number of frames to display by dragging the Timeline zoom. You can choose to display the smallest subdivision of one frame per second.
- 6 Drag the **Scrubber** until you get to the part of the video that you want to use as the beginning frame of the first segment. Click  **Set Mark-in**.
- 7 Drag the **Scrubber** again, this time, to the point where you want the segment to end. Click  **Set Mark-out**.
- 8 Do steps 4 and 5 repeatedly until you have marked all the segments you want keep or remove.

Note: To mark segments in and out, you can press **[F3]** and **[F4]** while playing the video.

Note: Click  **Invert Selection** or press **[Alt+I]** to toggle between marking segments that you want to retain or marking segments that you want taken out from the clip.

Note: **Quick search interval** allows you to set a fixed interval between frames and browse through the movie using the set value.

- Click **OK** when finished. The video segments that you kept are then inserted onto the Timeline.

Navigation controls in the Multi-trim Video dialog box



[F5] [F6]

Reverses or advances through the video in fixed increments. By default, these buttons move up or down through the video in increments of 15 seconds.



Plays a preview of the final trimmed video.



Plays the video file. Hold **[Shift]** then click to play only the selected segments.



Moves to the start or end frame of a trimmed segment.



Moves to the previous/next frame in the video.



Repeats playback of video

Saving trimmed clips

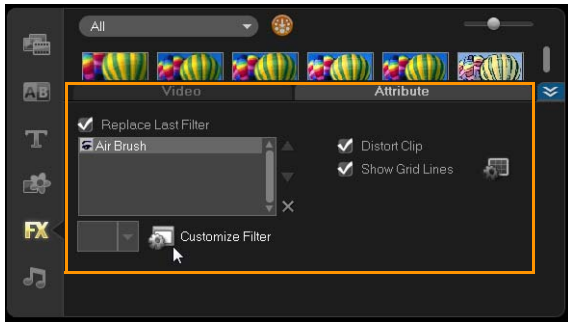
Frequently, when you make changes (i.e., after auto-splitting clips using Split by Scene, extracting clips using Multi-trim Video, or manually trimming clips), you may wish to make a permanent change to the clip and save the edited file. Corel VideoStudio Pro gives you a margin of safety since it saves the trimmed video to a new file and does not alter the original file.

To save, select a trimmed clip in the Storyboard View, Timeline View or the Library and select **File: Save Trimmed Video**.

The Edit Step Options Panel

The **Options Panel** in the **Edit Step** allows you to modify the media, transitions, titles, graphics, animation, and filters that you add to the Timeline.

The elements that you use in your project or effects that you apply to your clips can be modified or fine tuned in the **Attribute** tab.



Video: Video tab

- **Video Duration:** Displays the duration of the selected clip in hours:minutes:seconds:frames. You can trim the selected clip by changing the clip duration.
- **Clip volume:** Allows you to adjust the volume of the audio segment of your video.
- **Mute:** Silences the audio segment of your video without deleting it.
- **Fade-in/out:** Gradually increases/decreases the volume of the clip for a smooth transition. Select **Settings: Preferences - Edit** to set the fade-in/out duration.
- **Rotate:** Rotates the video clip.

- **Color Correction:** Allows you to adjust the hue, saturation, brightness, contrast, and gamma of the video clip. You can also adjust the White balance of the video or photo clip or make auto tone adjustments.
- **Playback Speed:** Allows you to adjust the playback pace of your clip.
- **Reverse video:** Plays the video backward.
- **Take a Snapshot:** Saves the current frame as a new image file and places it in the **Photo Library**. All enhancements made to the file are discarded before saving.
- **Split Audio:** Allows you to separate the audio from a video file and place it on the Voice Track.
- **Split by Scene:** Splits a captured DV AVI file based on the shooting date and time, or the changes in video content (i.e., motion change, camera shifting, brightness change, etc.).
- **Multi-trim Video:** Allows you to choose desired segments from a video file and extract them.

Photo: Photo tab




- **Duration:** Sets the duration of the selected image clip.
- **Rotate:** Rotates the image clip.
- **Color Correction:** Allows you to adjust the hue, saturation, brightness, contrast, and gamma of the image. You can also adjust the White balance of the video or image clip or make auto tone adjustments.
- **Resampling Option:** Lets you modify a photo's aspect ratio when a transition or effect is applied.
- **Pan & Zoom:** Applies the Pan & Zoom effect to the current image.
- **Presets:** Provides various Pan & Zoom presets. Choose a preset from the drop-down list.


- **Customize:** Allows you to define how to pan and zoom the current image.

Color: Color tab

- **Duration:** Sets the duration of the selected color clip.
- **Color Picker:** Click the color box to adjust the color.

Attribute tab

- **Mask & Chroma Key:** Allows you to apply overlay options such as mask, chroma key, and transparency.
- **Alignment Options:** Allows you to adjust object position in preview window. Set the option through the Alignment Options pop-up menu.
- **Replace last filter:** Allows the last filter applied to a clip to be replaced when you drag a new filter onto the clip. Clear this option if you want to add multiple filters to your clips.
- **Applied filters:** Lists the video filters that were applied to a clip. Click  or  to arrange the order of the filters; click  to remove a filter.
- **Presets:** Provides various filter presets. Choose a preset from the drop-down list.
- **Customize Filter:** Allows you to define the behavior of the filter throughout the clip.
- **Direction/Style:** Allows you to set the direction and style of entry/exit of the clip. This can be set to static, top/bottom, left/right, top-left/top-right, bottom-left/bottom-right.
- As for the style, you can set direction of entry/exit of clips through: **Rotate before/after pause duration** and **Fade in/out motion effect**.
- **Distort clip:** Allows you to modify the size and proportions of the clip.

- **Show grid lines:** Select to display the grid lines. Click  to open a dialog box where you can specify settings for the grid lines.

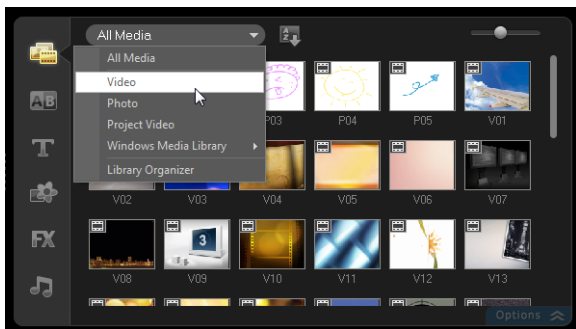
Assets and Effects

Video and photo files, transitions, titles, graphics, filters, and audio files are common elements in a movie production. The Library Panel provides quick access to these elements. Clicking a button in the Library Panel displays a specific media type or effect in the Library. You can filter the display by selecting from the Gallery drop-down menu.



Media

The Media button displays a selection of videos and photos in the Library. These elements can be added to the Video and Overlay Tracks.



The icon on the thumbnail helps you distinguish a photo from a video clip.

Supported Video Formats

- Microsoft® AVI (.AVI)
- 3GPP (.3GP)
- 3GPP2 (.3G2)
- COOL 3D® (.C3D)
- Microsoft® DVR-MS (.DVR-MS)
- Autodesk® Animation (.FLC or .FLI)
- Autodesk® 16-bit Animation (.FLX)
- Flash™ video(.FLV)
- Animated GIF (.GIF)
- QuickTime® Movies (.MOV or .QT)
- MPEG (.MPG, .MPEG, .MPV, or .MP2)

- MPEG-4 (.MP4 or .M4V)
- Adobe® Flash® (.SWF)
- Ulead® Image Sequence (.UIS)
- Video Paint (.UVP)
- Windows Media® Video (.WMV)
- Video Editor Project (.DVP)
- Corel® VideoStudio® Project Files (.VSP)

Supported Image Formats

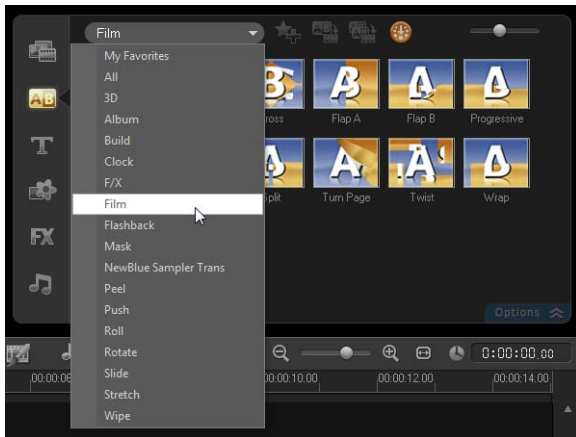
- Windows® Bitmap (.BMP)
- Graphics Interchange Format (.GIF)
- JPEG file interchange format (.JPG, .JPEG, or .JPE)
- Portable Network Graphics (.PNG)
- JPEG 2000 with Metadata (.JP2)
- JPEG 2000 (.JPG or .J2K)
- QuickTime® Movies (MOV or .QT)
- Tagged Image File (.TIF or .TIFF)
- Ulead® File For Photo Projects (.UFP)
- Ulead® File For Objects (.UFO)
- Ulead® Image Sequence (.UIS)
- Paint Shop Pro™ Image (.PSP)

RAW camera file formats: RAW, CRW, CR2, BAY, RAF, DCR, MRW, NEF, ORF, PEF, X3F, SRF, ERF, DNG, KDC, K25, HDR, SR2, ARW, NRW, OUT, TIF, MOS, FFF

Transitions

Transitions make your movie smoothly change from one scene to the next. They are applied between clips on the Video and Overlay Tracks in the Timeline. Effective use of this feature can add a professional touch to your movie.

There are 16 types of transitions in the Library. For every type, you choose a specific preset effect using the thumbnails.



To add a transition

- Click **Transitions in the Library** and select from various categories of transitions from the **drop-down** list. Scroll through the transitions in the **Library**. Select and drag an effect between two video clips in the **Timeline**. Drop your effect and it will snap into place. You can only drag and drop one transition at a time.
- Double-click a transition in the Library to automatically insert it into the first empty transition slot between two clips. Repeat this process to insert a transition at the next cut. To replace a transition in your


project, drag the new transition onto the transition thumbnail for replacement in the Storyboard View or Timeline View.

- Overlap two clips in the Timeline.

To add a transition automatically

- 1 Select **Settings: Preferences - Edit**, then select **Automatically add transition effect**.
- 2 Choose a transition effect from the **Default transition effect** drop-down menu.
- 3 The default transition is added automatically between clips.
Note: A default transition, however, is always added automatically between overlapping clips, whether the **Automatically add transition effect** in Preferences is **enabled** or not.

To add a selected transition to all video track clips

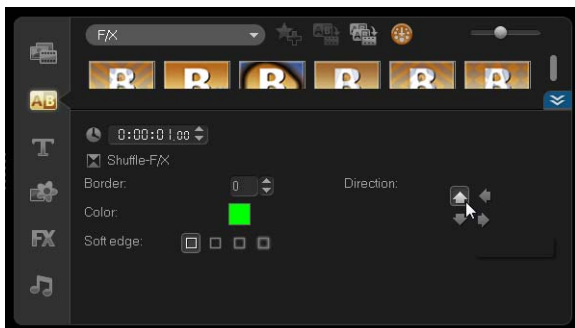
- 1 Select the thumbnail of the transition.
- 2 Click  or right-click on the transition and select **Apply current effect to video track**.

To add random transitions to all video track clips

- Click  .

To customize a preset transition

- 1 Double-click a transition effect in the Timeline.
- 2 Modify the attributes or behavior of the transition in the Options Panel.




To delete a transition

- Click on the transition to be removed and press **[Delete]**.
- Right-click on the transition and select **Delete**.
- Drag to separate two clips with transition effect.

Adding transitions to My Favorites

You can collect your favorite transitions from different categories and save them in the **My Favorites** folder. This way, you can easily find the transitions you use most often.

To save a transition in My Favorites

- 1 Select the thumbnail of the transition.
- 2 Click  to add the transition in the Favorites Library list.

Titles

Corel VideoStudio Pro lets you create professional-looking titles, complete with special effects, in minutes. While a picture may be worth a thousand words, the text in your video production (i.e., subtitles, opening and closing credits, etc.) adds to the clarity of your movie.

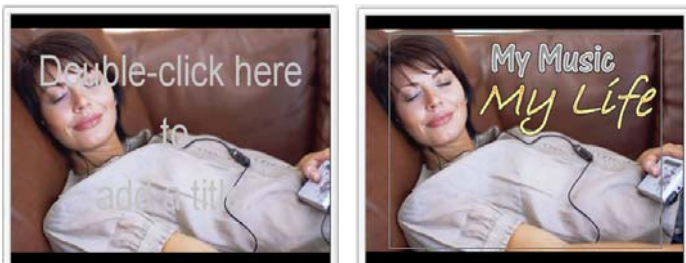
Adding two title tracks

Corel VideoStudio Pro allows you to add text either in multiple text boxes or in a single text box. Using multiple text boxes gives you the flexibility to position the different words of your text anywhere on the video frame and allows you to arrange the stacking order of the text. A single text box works well when you are creating opening titles and end credits for your projects.

To add multiple titles directly on the Preview Window

- 1 Click **Title** in the Library Panel.
- 2 Double-click the Preview Window.
- 3 In the **Edit tab**, select **Multiple titles**.
- 4 Use the buttons in the **Navigation Panel** to scan your movie and select the frame where you want to add the title.

- 5 Double-click the Preview Window and type in your text.
Click outside the text box when you are done typing. To add another set of text, double-click again on the Preview Window.
You can also add a preset title from the Library and modify the text on the Preview Window.
by dragging a preset title thumbnail from the Library to the title Track. and modifying the text on the Preview Window.



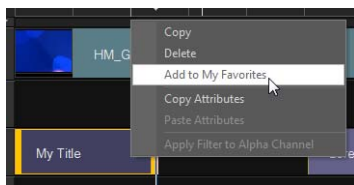
You can add multiple titles and modify the attributes of each title.

To add a preset title to your project

- 1 Click **Title** in the Library Panel.
- 2 Drag and drop the preset text onto the Title Track.
Note: You can modify a preset title by double-clicking it on the Preview Window and entering new text. Open the Options Panel to edit the title attributes.

Saving your titles to My Favorites in the Library

If you still intend to use the title you have created for other projects, it is recommended that you save to My Favorites in the Library. You can drag a title to the Library to save it or right-click the title clip in the Timeline and click **Add to My Favorites**.



The Title Safe Area

It is recommended to keep your text within the title safe area. The title safe area is the rectangular white outline on the Preview Window. Keeping the text within the bounds of the title safe area will make sure the title does not get cut off at the edges.

To show or hide the title safe area

- Select **Settings: Preferences - General tab - Display title safe area on Preview Window**.

Editing titles

For single titles, select the title clip on the Title Track and click the Preview Window.

For multiple titles, select the title clip on the Title Track and click the Preview Window, then click the text that you want to edit.

Once a title clip has been inserted onto the Timeline, you can adjust its duration by either dragging the handles of the clip, or entering a **Duration** value in the Edit tab.

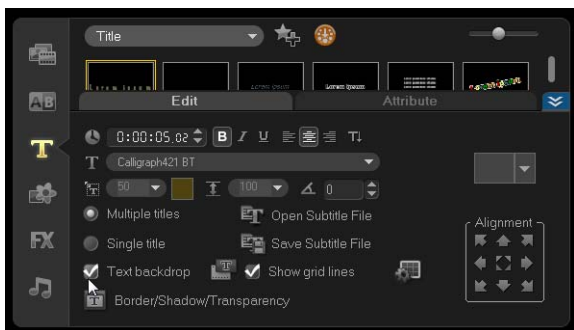
To see how the title appears on the underlying video clip, select the title clip and then click **Play Trimmed Clip** or drag the **Scrubber**.



You can also copy and paste attributes from one clip to another. To do this, right-click the source clip, select **Copy Attributes**, and then right-click the target clip and select **Paste Attributes**.

Modifying text attributes

Modify the attributes of your text, such as font face, style, size, and more, by using the available settings in the Edit tab of the Title Library. Click **Title** in the Library then go to the Edit tab to apply options available for modifying text attributes.




More options allow you to set the style and alignment, apply **Border**, **Shadow** and **Transparency** and add a **Text backdrop** to your text.



You can apply preset styles to your title by clicking the Title Style Preset button.


A text backdrop superimposes your text on an ellipse, rounded rectangle, curve-edged rectangle and a rectangle color bar.

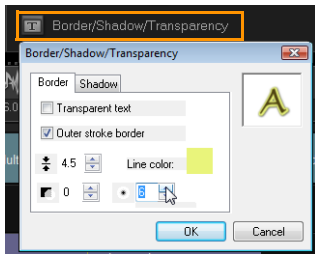
To add a text backdrop

- 1 Click  to open the **Text Backdrop** dialog box to select backdrop type and color.
- 2 Choose a solid background bar or shapes that fit with text.
- 3 Choose the color of your backdrop. Use a solid or gradient color and set the transparency.



To modify text border, transparency, and add shadows

- Click  in the Options Panel and set attributes using the **Border/Shadow/Transparency** dialog box.



To rotate text in the Preview Window


- Select a text to display the yellow and purple handles in the Preview Window.
- Click and drag a purple handle to the position you want.

Note: You can also rotate text using the Options Panel. In the **Edit** tab, specify a value in **Rotate by degree** to apply a more precise angle of rotation.

Applying animation

Apply motion to your text using title animation tools, such as Fade, Moving Path, and Drop.

To apply animation to the current text

- In the **Attribute** tab, select **Animation** and **Apply**.
- Select the animation category from the **Type** drop-down list and select the specific preset animation from the box under **Type**.
- Click  to open a dialog box where you can specify animation attributes.

- 4 In some animation effects, you can drag the **Pause duration handles** to specify how long the text will pause after it enters and before it exits the screen.





Pause duration handles

Applying title effects

Apply filters to your text using preset Title Effects such as Bubble, Mosaic, and Ripple. The title filters are in a separate **Title Effects** category.

To apply title filters to the current text

- 1 Click **Filter** and choose **Title Effects** in the Gallery drop-down menu. The Library displays the thumbnails of various filters under the Title Effects category.
- 2 Select the clip in the Timeline then choose the title filter from thumbnails shown in the **Library**.
- 3 Drag and drop the title filter onto your clip in the Title Track.
Note: By default, the filter applied to a clip is always replaced with the new filter dragged onto the clip. In the **Attribute** tab of the Options Panel, clear **Replace last filter** to apply multiple filters to a single title.
- 4 Click **Customize Filter** in the **Attribute** tab of the Options Panel to customize the attributes of the title filter. Available options depend on the selected filter.
- 5 Preview how your clip looks with the video filter applied to it using the Navigator.
Note: When there is more than one title filter applied to a clip, you can change the order of filters by clicking  or . Changing the order of the title filters will have different effects on your clip.

Graphic

The Graphic Library contains color clips, objects, frames and flash animation.

Adding Color Clips

Color clips are solid colored backgrounds that are useful for inter-titles. For example, insert a black color clip as background for end credits. You can use the preset color clips or create new color clips in the Library.

To select a color clip in the Color Library

- 1 Select **Graphic** from the Library Panel and choose **Color** from the Library drop-down list.
- 2 Choose the desired color as displayed in the Library and drag to the Video or Overlay Track.
- 3 To add a color that is not in the Library, click the color box beside the color picker. Here, you can select a color either from Corel Color Picker or the Windows Color Picker.



- 4 Set the **Duration** of the color clip in the Options Panel.

Adding Objects or Frames

Add decorative objects or frames to your videos as Overlay clips.

To add an object or frame

- 1 Select **Graphic** in the Library.
- 2 From the drop-down list, **you can choose to add Object or Frame.**
- 3 Select an object or frame and drag it onto the **Overlay Track** in the **Timeline.**
- 4 Click the **Attribute** tab to resize and reposition the object or frame.
Note: You can also resize an object by double-clicking it on the Preview Window and dragging the yellow handles.



Object



Frame

Adding Flash animations

Give more life to your videos by adding Flash animations as Overlay clips.

To add a Flash animation

- 1 From the **drop-down list in the Graphic Library**, select **Flash Animation**.
- 2 Select a Flash animation then drag it onto the **Overlay Track**.
- 3 Click the **Options** button.
- 4 In the **Attribute** tab, customize your Flash Animation.



Customizing objects, frames and animations

Use the various options available in the **Edit** and **Attribute** tabs to customize your object and frame. You can add animation, apply transparency, resize the object or frame, and more.

Filters

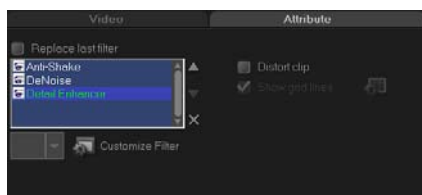
Video filters are effects that you can apply to clips in order to change their style or appearance. Filters can be creative to enhance your clips, or corrective to fix flaws. For example, you can make a clip look like a painting or improve its color balance.

Filters can be applied alone or in combination to the Video, Overlay, and Title Tracks.

There are also audio filters that you can apply to the Audio Track. See the [Applying Audio Filters](#) topic for more information.

To apply a video filter to a clip (video or photo) in the Video Track

- 1 Click **Filter** in the Library to display the thumbnails of various filter samples.
- 2 Select the clip in the Timeline then choose the video filter from thumbnails shown in the **Library**.
- 3 Drag and drop the video filter onto your clip in the Video Track.





- 4 Click **Customize Filter** in the **Attribute** tab of the Options Panel to customize the attributes of the video filter. Available options depend on the selected filter.
- 5 Preview how your clip looks with the video filter applied to it using the Navigator.

Applying multiple filters

By default, the filter applied to a clip is always replaced with the new filter dragged onto the clip. Clear **Replace last filter** to apply multiple filters to a single clip. Corel VideoStudio Pro allows you to apply a maximum of five filters to a single clip.

You can also choose the filter to be previewed through the selection in the view toggle. In the event that you choose to render your project, only enabled filters will be included in your movie.

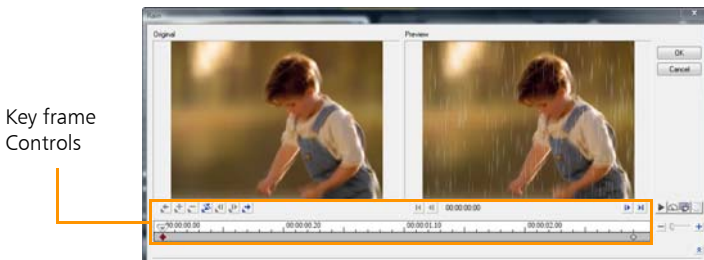
When there is more than one video filter applied to a clip, you can change the order of filters by clicking  or . Changing the order of the video filters will have different effects on your clip.

Key frame settings


Corel VideoStudio Pro allows you to customize video filters in a variety of ways, such as by adding key frames to your clips. Key frames let you specify a different attribute or behavior for your video filter. This gives you the flexibility to determine how your video filter will look at any point in a clip and to vary the intensity of an effect over time.

To set key frames for your clips






- 1 Drag and drop a video filter from the Library onto a clip on the Timeline.
- 2 Click **Customize Filter**. The dialog box for the video filter appears.
Note: The available settings are different for each video filter.
- 3 In the **Key frame controls**, drag the **Scrubber** or use the arrows to go to the frame where you'd like to change the attributes of your video filter.





Note: You can use the mouse wheel to zoom in or out of the Timeline Control bar for precise placement of key frames.

- 4 Click **Add key frame**  to set that frame as a key frame in the clip. You can adjust the video filter settings for that particular frame.

Note: A diamond-shaped mark  on the Timeline Control bar appears and indicates that the frame is a key frame in the clip.

- 5 Repeat steps 3 and 4 to add more key frames to your clip.
- 6 Use the Timeline controls to edit or to go to a key frame in the clip.
 - To delete a key frame, click **Remove key frame** .
 - Click **Reverse key frames**  to reverse the sequence of key frames on the Timeline such that the sequence starts with the last key frame and ends with the first key frame.
 - To move to the succeeding key frame, click **Go to next key frame** .
 - To move to the key frame prior to the one selected, click **Go to previous key frame** .
- 7 Adjust the video filter settings according to your preferences.
- 8 Preview the changes you've made by clicking **Play**  in the Preview Window of the dialog box.
- 9 Click **OK** when finished.

Note: To preview the clip with the video filter applied, use the Preview Window or an external device such as a TV monitor or DV camcorder.

To choose the display medium, click , then click  to open the **Preview Playback Options** dialog box.

Audio

Sounds are one of the elements that determine the success of your video production. Corel VideoStudio Pro allows you to add both narration and music to your project.

The Audio feature in Corel VideoStudio Pro consists of two tracks: **Voice** and **Music**. You can insert narrations on the **Voice Track** and the background music or sound effects on the **Music Track**.

For more information on working with audio files, see [Adding audio files](#), [Adding voice-over narration](#), and [Adding background music](#).

Taking snapshots in the Edit Step

A photo snapshot can be taken in the **Edit Step** by selecting a specific frame on the Timeline and saving it as an image file.

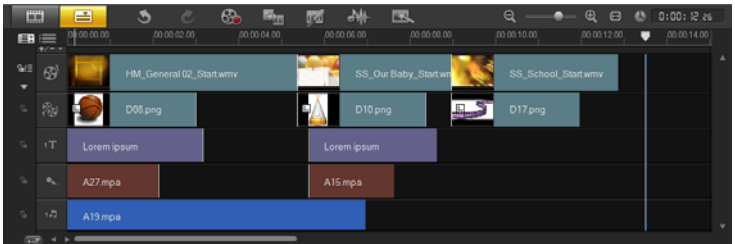
To capture photos

- 1 Select **Settings: Preferences - Capture**. Choose Bitmap or JPEG as the **Snapshot format**.
If you selected JPEG, also set the **Snapshot quality**. Click **Ok**.
- 2 Select a video clip in your project.
- 3 Drag the **Scrubber** to the frame you want to capture.
- 4 Switch to the Photo folder in the Library. The folder can be the default folder path or the one you created.
- 5 Select **Edit: Take a Snapshot**. The photo snapshot is automatically added in the Library and saved to your working folder.

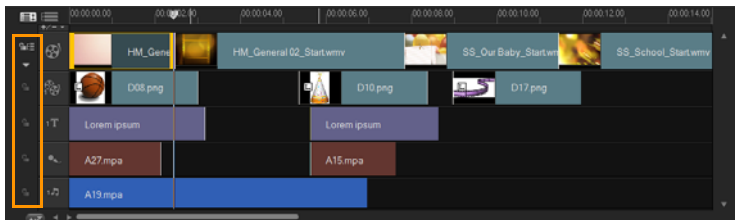
Ripple Editing

Ripple Editing allows you to insert or remove clips while automatically moving other clips (including empty spaces) accordingly, to make room for it on the Timeline. Ripple editing begins after the insertion point. Use this mode to maintain the original synchronization of tracks when inserting or deleting clips.

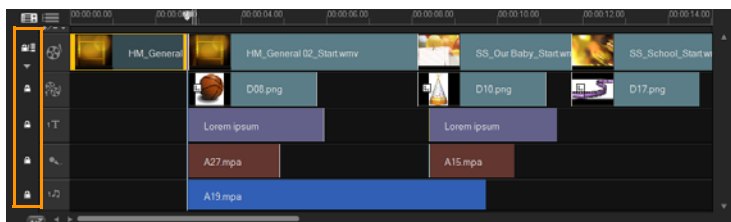
This feature is useful when you want other titles or tracks to play along with a particular moment in the video. This also makes editing more efficient by keeping all tracks synchronized, using the video track as reference.



Original Timeline



Timeline after a clip is inserted in the Video Track with Ripple Editing disabled. Only the clips on the Video Track are moved when a new clip is inserted.



Timeline after a clip is inserted in the Video Track with Ripple Editing enabled on some tracks. Clips on the tracks with Ripple Editing enabled move when a new clip is inserted to maintain original synchronization.

To insert clips in Ripple Editing mode

- 1 Click **Ripple Editing** to activate the panel, then select the corresponding box for each track where you want to apply Ripple Editing.
- 2 Drag the clip to insert from the Library to the desired position on the Timeline. As soon as the new clip is in place, all clips where Ripple Editing is applied will shift accordingly while maintaining their track positions relative to one another.

Note: Ripple Editing also works in removing clips.

Editing with Smart Proxy

The main purpose of the Smart Proxy feature is to have a more fluid editing experience when working with large, high resolution video files.

When you edit and preview your project, proxy files will be used as substitutes for their large video source counterparts. Whereas when you render a video file, the original video source files will be used.

Proxy files are lower resolution working copies of video files. They are reduced in resolution or compression bit rate -- to speed up editing of high definition files such as HDV and AVCHD. Proxy files are source-

dependent rather than project-dependent. In other words, proxy files can be shared among different projects. Smart Proxy can also be used with other video file formats and is not limited to HD files.

You can enable the creation of proxy files by selecting **Settings: Smart Proxy Manager - Enable Smart Proxy**.

To set the environment when smart proxy files will be generated

- 1 Select **Settings: Smart Proxy Manager - Settings**.
- 2 In the **Performance** tab of the Preferences dialog box, you can customize Smart Proxy settings.



The Smart Proxy feature is enabled in Corel VideoStudio Pro upon program startup.

The **Smart Proxy File Manager** lists the source and proxy files. You can use this manager to delete proxy files you no longer need.

The **Smart Proxy Queue Manager** shows the files for which proxies will be generated.

In the case of HDV and AVCHD files, Smart Proxy is automatically activated during capture and use of these files in your project.

Once Smart Proxy is enabled, proxy files will automatically be created and used in your project whenever you insert video files into the Timeline.


To view the list of video files to be generated as proxy files

- 1 Go to **Settings** and select **Smart Proxy Manager** then **Smart Proxy Queue Manager**.
- 2 Select the files you want to include in your queue and then click **OK**.

Converting multiple files

Batch Convert allows you to convert a large number of files to another format in sequence.

To do Batch Convert

- 1 Click  in the toolbar.
- 2 Click **Add** and then choose the files you want to convert.
- 3 Select an output folder in **Save in folder**.
- 4 In **Save as type**, choose your desired output type.
- 5 Click **Convert**.

The result is shown in the **Task Report** dialog box. Click **OK** to finish.

Enhancing clips

Corel VideoStudio Pro lets you improve the appearance of a video or image clip by adjusting its current properties such as its color settings in **Color Correction**.

Adjusting color and brightness

Adjust color and brightness settings of photos and video on the Timeline by clicking **Color Correction** in the Options Panel.

To adjust color and brightness

- 1 Select the video or image clip to enhance on the Timeline.
- 2 Drag the sliders to the right to intensify the Hue, Saturation, Brightness, Contrast or Gamma of the clip.
- 3 Watch the Preview Window to see how the new settings are affecting the image.

Note: Double-click the appropriate slider to reset the original color setting of the clip.

Adjusting white balance

White balance restores the natural color temperature of an image by removing unwanted color casts due to conflicting light sources and incorrect camera settings.

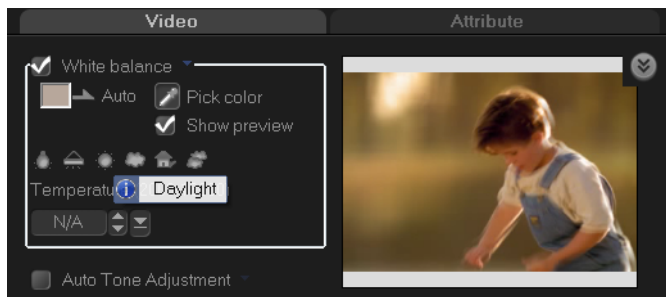
For example, an object illuminated with incandescent lights may turn out too reddish or yellowish in an image or video clip. To successfully achieve a natural look, you need to identify a reference point in your image which represents the color white. Corel VideoStudio Pro gives you different options in selecting the white point:

- **Auto:** Automatically chooses a white point that is well-matched with the overall color of your image.
- **Pick Color:** Allows you to manually select the white point in the image. Use the Eyedropper Tool to pick a reference area that should be white or neutral gray.
- **White balance presets:** Automatically selects white point by matching specific light conditions or scenarios.
- **Temperature:** Allows you to specify color temperature of light sources in Kelvin (K). Lower values indicate Tungsten, Fluorescent and Daylight scenarios while Cloudy, Shade and Overcast fall under high color temperature.

To adjust White balance

- 1 Select an image or video clip on the Timeline or the Library.
- 2 In the Edit Step Options Panel - Video tab, click **Color Correction**.
- 3 Check the **White balance** option box.

- Determine how you want to identify the white point. Choose among the different options (**Auto**, **Pick color**, **White balance presets** or **Temperature**).



- If you have selected **Pick color**, choose **Show preview** to display a preview area in the Options Panel.
- When you drag your cursor to the Preview area, it will change to an eyedropper icon.
- Click to identify a reference point in your image which represents the color white.
- Watch the Preview Window to see how the new settings are affecting the image.

Note: Click the **White balance** drop-down arrow to display more color adjustments you can use. Select either **Vivid Color** or **Normal Color** for the color intensity. As for the level of sensitivity of White balance, you can choose any of the following options: **Weaker**, **Normal** and **Stronger**.

Adjusting tones

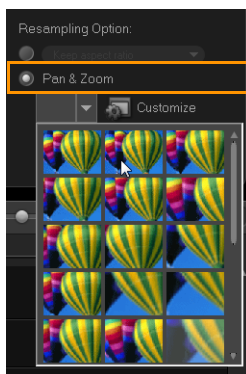
To adjust the tone quality of your video or image clips, click **Color Correction** in the Edit Step Options Panel and select **Auto Tone Adjustment**. You can indicate if you want the clip as **Brightest**, **Brighter**, **Normal**, **Darker** or **Darkest** by clicking the **Auto Tone Adjustment** drop-down menu.

Applying pan and zoom effect

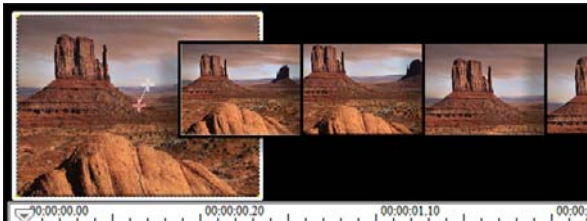
Pan & Zoom is applied to photos, and it emulates the pan and zoom movements of a video camera. This is known as the “Ken Burns effect”.

To apply pan and zoom effect to photos, right-click the photo in the Timeline and select **Auto Pan and Zoom**.


You can also apply pan and zoom to a photo by clicking **Pan & Zoom** in the Options Panel Photo tab.

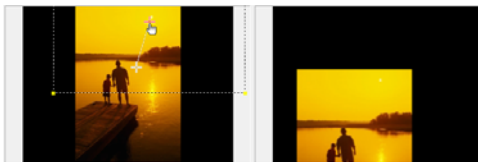


You can customize a pan and zoom effect. The procedure below shows an example of how to start zoomed in on a subject, then pan and zoom out to show the whole image.



To customize pan and zoom effect

- 1 In the **Photo** tab, select **Customize** under **Pan & Zoom**.
- 2 In the **Pan and Zoom** dialog box, the crosshairs  in the Original Window represent the key frames in the image clip where settings can be customized to produce the pan and zoom effect.
- 3 Drag the **Start** key frame, represented by crosshairs in the Image Window, to the area where you want to focus.



Image

Preview

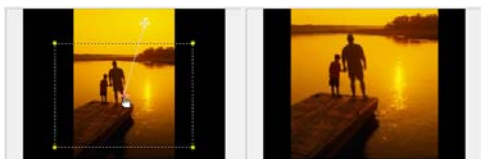
- Zoom in on the area by minimizing the marquee box or by increasing the **Zoom ratio**.



Original


Preview

- Drag crosshairs of the **End** key frame to your desired final point.




Original

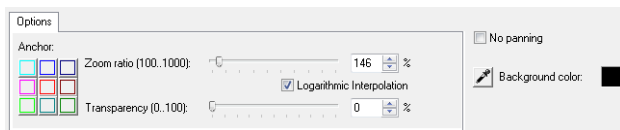
Preview

- Click  to preview the effect.
- Click **OK** to apply the effect to the image.

Additional options in the Pan and Zoom dialog box allow you to further customize this effect. Click the **Anchor** boxes to move the marquee box to fixed positions in the Original Window.

To zoom in or out of a fixed area without panning the image, select **No panning**.

To include a fade-in/out effect, increase the **Transparency**. The image will fade to the **Background color**. Click the color box to choose a background color, or click  to select a color on the Image Window.



Resizing and distorting clips

To resize or distort a clip

- 1 Select a clip in the Video Track then click the **Attribute** tab in the Options Panel.
- 2 Check the **Distort clip** option box. The yellow handles will appear. Do the following steps:
 - Drag yellow handles at the corners to resize the clip proportionally (A).
 - Drag yellow handles at the sides to resize without maintaining proportions (B).
 - Drag the green handles at the corners to skew the clip (C).



A

B

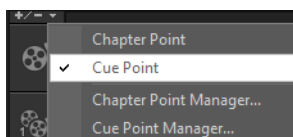
C

Adding cues and chapters

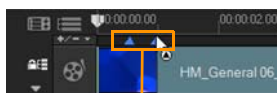
Adding cues and chapters helps you to navigate through your project, allowing you to place comments on your Timeline. These cue and chapter marks are also used for DVD production.

To add project cues

- 1 Click the **Chapter/Cue Menu**.



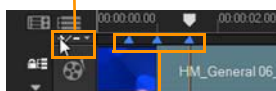
- 2 Select **Cue Point**.
- 3 Drag the cursor to the part of the project where you want to add a cue point and click the bar below the Timeline ruler. Notice that a blue arrow icon is added.



Cue points

Another way to add a cue point is to drag the Timeline slider to the desired cue point position in your project. Click the **Add/Remove Cue Point**.

Add/Remove Cue Point



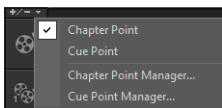
Cue points

- Repeat Step 3 to add more cue points.

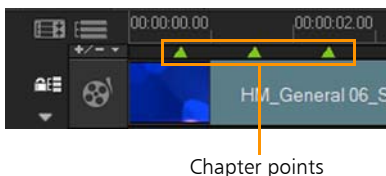
Note: You can also use the **Cue Point Manager** when adding cue points. Select **Add** and specify the timecode and name of cue for easy identification. Click **OK** and then **Close**.

To add chapters

- Make sure that the **Chapter Point** is selected in the **Chapter/Cue Menu**.



- Drag the cursor to the part of the project you want to assign as chapters and click the bar below the Timeline ruler. Notice that, below your Timeline ruler, a green arrow icon appears that serves as a marker in your movie.



You can also drag the Timeline slider to the desired chapter point position in your project. Click the **Add/Remove Chapter Point**.

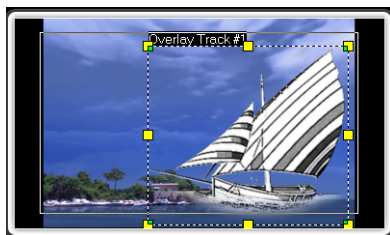
- To edit a chapter, click on a chapter point you want to edit and drag to a new position.
- To rename, double click a chapter point and then enter a new chapter name. Click **OK**.

Note: To remove chapters and cues, simply drag the markers outside the Timeline ruler and then drop. Or you can also drag the Timeline ruler to the chapter or cue point you want to remove and then click **Add/Remove Chapter Point** or **Add/Remove Cue Point**.

Working with Overlays

Another feature under the Edit Step is the application of overlay effects. This allows you to add overlay clips to combine with your videos in the Video Track. You can also use an overlay clip to create a picture-within-a-picture effect. You can also use an overlay clip to create a picture-within-a-picture effect, or to add a lower third, which can make your movie production look more professional. Overlay tracks are also used to insert video while keeping the audio from the main track.

To make overlay clips with transparent backgrounds, you can create a 32-bit alpha channel AVI video file or an image file with an alpha channel. You can use programs such as Corel PaintShop Photo Pro and CorelDRAW to create these video and image files.



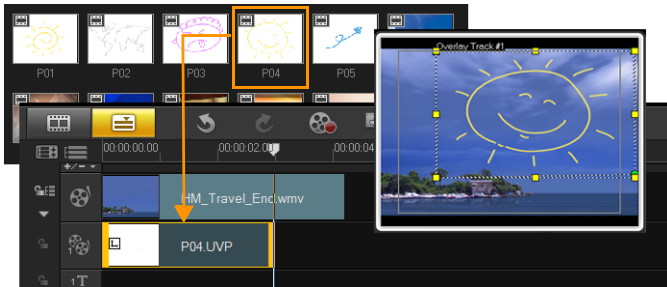
Another alternative is to use the Mask & Chroma Key function in Corel VideoStudio Pro to make a specific color on an image transparent.

Adding clips to the Overlay Track

Drag media files to the Overlay Track on the Timeline to add them as overlay clips for your project.

To add a clip to the Overlay Track

- 1 In the Library, select the media folder that contains the Overlay clip that you want to add to your project.
- 2 Drag the media file from the **Library** to the **Overlay Track** on the **Timeline**.

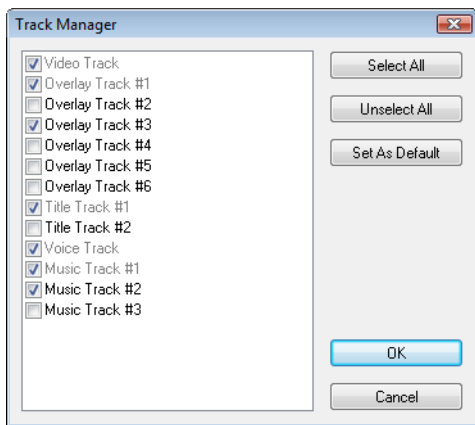


Note: To add more tracks, right-click the Overlay Track. The Track Manager will open. You can also use color clips as Overlay clips.

- 3 To customize the Overlay clip, click the **Attribute** tab. The Overlay clip is then resized to a preset size and positioned at the center. Use the options in the **Attribute** tab to apply direction/style to the Overlay clip, add filters, resize and reposition the clip, and more.

Adding Multiple Tracks

You can also insert media files on another Overlay Track for added impact for your movie. You can either show or hide these Overlay Tracks in your project. Click **Track Manager** in the Toolbar to open the Track Manager dialog box. Select the Overlay Tracks to display.



Working with Overlay clips

Adding multiple Overlay Tracks gives you more creative possibilities for your movie. You can superimpose clips over a background video with portions of the overlay being transparent or add objects and frames to your video. Achieving different effects for your projects is easy when you know how to use Overlay clips and tracks.

Trimming Overlay clips

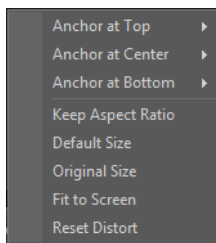
You trim a clip in the Overlay Track the same way you trim a clip in the Video Track. To split a clip in the Video and Overlay Tracks, select **Project** as the Play mode and then drag the slider to the part you want to cut.

Click .

Repositioning the current Overlay clip

There are a number of ways to reposition an Overlay clip:

- Drag the Overlay clip to the desired area on the Preview Window. It is recommended that you keep the Overlay clip within the title safe area.
- In **Timeline View**, click on the Overlay clip and click Options. In the **Attribute** tab, click **Alignment Options** and choose from a menu of position options.



Resizing an Overlay clip

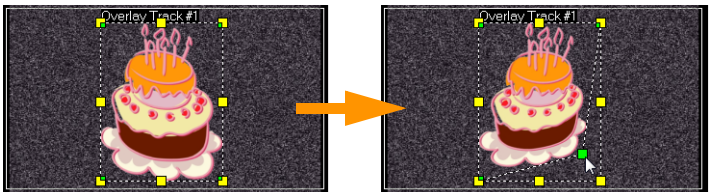
In the Preview Window, drag the handle on the Overlay clip to resize it. If you drag the yellow corner handle, it will keep the aspect ratio when you resize the clip.



To apply the **Keep Aspect Ratio** option, click **Alignment Options** in the **Attribute** tab. This resizes the Overlay clip based on width or height, depending on which side is longer.

Distorting an Overlay clip

The corners of the outline box that surround the Overlay clip have green nodes which you can use to distort the Overlay clip. Drag the green nodes to distort the Overlay clip.



Dragging the green node distorts an overlay clip.

When you select the green node, the cursor becomes a smaller arrow with a small black box at its tail.



Hold **[Shift]** while dragging the green nodes to keep the distortion within the outline box of the current clip.

Applying motion to an Overlay clip

In the **Attribute** tab, select the direction and style by which the Overlay clip will move to or from the screen under **Direction/Style** option. Click a specific arrow to set where you want your clip to enter and exit in your movie. You can rotate the clip or fade it in and out.

Pause duration determines how long your pause will be in the designated area before the clip exits the screen. If you applied motion to the Overlay clip, drag the **Trim markers** to set the **Pause duration**.



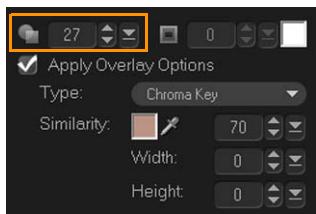
Pause duration

Enhancing Overlay clips

Applying transparency, border, chroma key, and filters can enhance your Overlay clips.

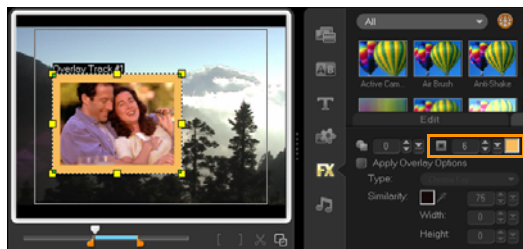
To apply transparency to an Overlay clip

- 1 In the **Attribute** tab, click **Mask & Chroma Key**.
- 2 Drag the **Transparency** slider to set the opacity of the Overlay clip.



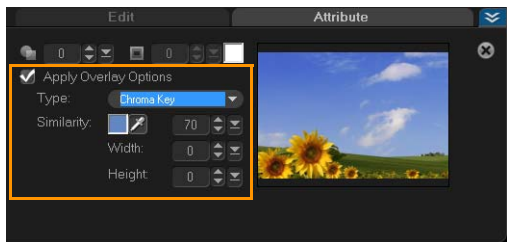
To add a border to an Overlay clip

- 1 In the **Attribute** tab, click **Mask & Chroma Key**.
- 2 Click the **Border** arrow keys to set the thickness of the border for the Overlay clip.
- 3 Click the **Border** color box located beside the arrow keys to set the color of the border.




Chroma keying an Overlay clip

Chroma keying makes a particular color in a clip transparent and shows the clip in the Video Track as background.



To specify Chroma Key settings to the current Overlay clip

- 1 Click **Mask & Chroma Key** in the **Attribute** tab.
- 2 Click **Apply Overlay options**, then choose **Chroma Key** from the **Type** drop-down list.
- 3 In the Similarity option, click  to pick the color to be rendered as transparent in the Preview Window. As you click the eye dropper to pick the color mask, you can instantly see how chroma keying affects the image.
- 4 Move the color similarity slider to adjust the range color to be rendered transparent.

Note: You can also crop the overlay clip by setting Width and Height.

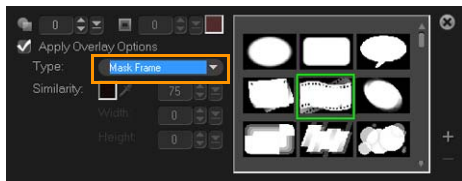


Without Chroma Key

With Chroma Key

Adding a mask frame

Adding a mask or a matte to an overlay clip applies a shape around it that you can render opaque or transparent.




To add a mask frame

- 1 Click **Mask & Chroma Key** in the **Attribute** tab.
- 2 Click **Apply Overlay Options** then choose **Mask Frame** from the **Type** drop-down list.

- 3 Select a mask frame.
- 4 Watch the Preview Window to see how the new settings affect the image.



- 5 To import a mask frame, first create a mask for your project. Click  and browse for the image file.

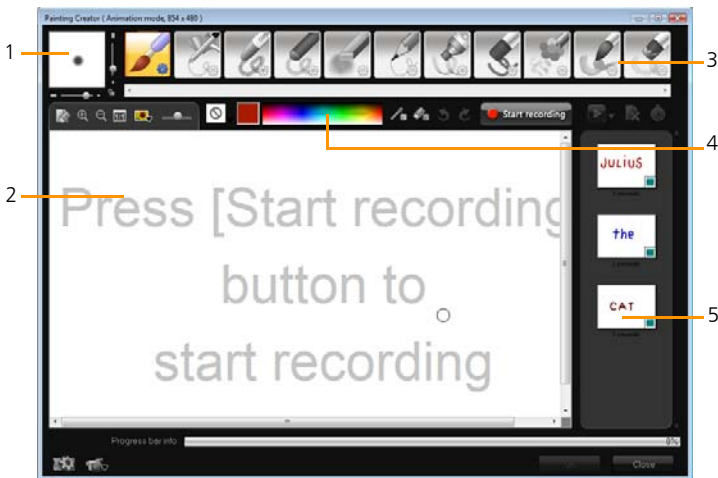
Note: You can use any image file for a mask. If your mask is not in the required 8-bit bitmap format, Corel VideoStudio Pro automatically converts the mask. You can use programs such as Corel PaintShop Photo Pro and CorelDRAW to create an image mask.

Painting images and animations using Painting Creator

Painting Creator is a feature of Corel VideoStudio Pro that allows you to record painting, drawing, or writing strokes as an animation to use as an overlay effect.

To launch the Painting Creator dialog box, click  in the toolbar.

Painting Creator interface basics



- 1 - Brush Thickness
Defines the thickness of your brush tip through a pair of sliders and a preview box.
- 2 - Canvas / Preview Window
The painting area.
- 3 - Brush Panel
Choose from a wide array of paint media, brush/tool tips, and transparency.
- 4 - Color Palette
Allows you to choose or specify color using the Windows Color Picker or Corel Color Picker. You can also pick color by clicking the eye dropper.
- 5 - Macro / Static Painting Library
Contains previously recorded clips.

Painting Creator control buttons and sliders



New / Clear Button - Launches a new canvas or Preview Window.



Zoom In and Zoom Out buttons - Allows you to zoom in and zoom out your view of the painting.



Actual Size - Reverts your canvas or Preview Window to its actual size.



Background image button and slider – Clicking on the Background Image button allows you to use images as reference for your painting and control its transparency through the slider.



Texture Option Button - Allows you to choose and apply textures to your brush tips.



Eyedropper Tool - Allows you to select a color from the color palette or surrounding objects.



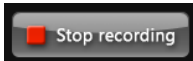
Eraser mode button - Enables you to write or erase your painting / animation.



Undo Button – Allows you to undo and redo actions in Still and Animation modes.



Redo button – Allows you to undo and redo actions in Still and Animation modes.



Start recording / Snapshot button – Records your painting session or adds your painting to the Painting Library. The **Snapshot** button only appears if in Still mode.



Play / Stop button – Plays or stops the current painting animation. Enabled only in Animation mode.



Delete button – Deletes an animation or image from the library.



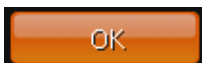
Change duration button – changes the duration of the selected clip.



Preference Control button – Launches the Preferences dialog box.



Change to Animation or Still mode button – Allows you to switch between Animation mode and Still mode.



OK button – Closes Painting Creator and inserts the animations and images in the Video Library and saves the files in *.uvp format in the Corel VideoStudio Library.





Close button – Closes the Painting Creator module dialog box.

Painting Creator modes


There are two modes of Painting Creator for you to choose from – the Animation Mode and the Still Mode.

In **Animation mode**, you can record entire painting sessions and embed your output in the Timeline of Corel VideoStudio Pro.

Still mode allows you to create image files using different sets of tools just like any digital imaging program.

To choose between the two modes, click on  found at the bottom of the Painting Creator dialog box to work on Animation mode and the  button for the Still mode. By default, Painting Creator will launch in Animation mode.

To change a default clip duration

- 1 Click . The Preferences dialog box appears.
- 2 In the **General** tab, set macro duration to increase or decrease.
- 3 Click **OK**.

To use a reference image

Click  and the **Background Image Option** dialog box appears. Set the following options:

- **Refer to the default background color:** Allows you to select a solid background color for your painting or animation.
- **Current timeline image:** Uses the video frame currently being displayed on the Timeline.
- **Customize image:** Allows you to open an image and use it as the background for your painting or animation.


To paint a still image

- Using the different sets of brushes and colors, paint your still image on the canvas or Preview Window and click **Snapshot** when finished. Your painting will automatically be saved in the Painting Creator Library.

To record a painting animation

- Click **Start recording** and, using the different sets of brushes and colors, paint your still image on the canvas or Preview Window. After finishing all your desired painting steps, click **Stop recording** and your painting animation will automatically be saved in the Painting Creator Library.

To play your painting animations

- Choose your desired animations from the Macro/Static Library and click  to play the selected gallery item.

To convert your animation to a still image


- Right-click your animation thumbnail and select **Transfer animation item to still**.

You can use the still image as an intro or end clip of your animation.

To import animations and images in the Corel VideoStudio Library

- Choose your desired animations and images in the Gallery and choose **OK**. Corel VideoStudio Pro will automatically insert your animations in the Library's Video folder and images in the Images folder both in *.uvp format.

To specify your brush settings

- Click on  the icon of preferred brush settings and click **OK**. Options vary from one painting tool to another.

Working with Audio

Sounds are one of the elements that determine the success of your video production. Corel VideoStudio Pro allows you to add music, narration, and sound effects to your project.

The Audio feature in Corel VideoStudio Pro consists of four tracks: one **Voice** and three **Music**. You can insert narrations on the **Voice Track** and the background music or sound effects on the **Music Track**.



Adding audio files

You can add audio files to your project in any of the following ways.


- Add audio files to the Library from a local or network drive.
- Rip audio from CD
- Record a voice-over clip
- Use SmartSound®

Note: You can also extract audio from a video file.

To add an audio file to the Library

- Click  in the **Library Panel** and click  to browse for audio files in your computer.



The Corel VideoStudio Pro DVD also comes with several audio clips ready for your use. Click  to add clips to the Library for easy access.

Adding voice-over narration

Documentaries, news and travel features often use narrations to help the audience understand what is going on in the video. Corel VideoStudio Pro allows you to record your own narration.

To add voice-over narration

- 1 Move the scrubber to the section of the video where you want to insert your voice-over.
- 2 In Timeline view, click the **Record/Capture Option** button and select **Voice-over**. The **Adjust Volume** dialog box appears.
Note: You cannot record over an existing clip. When a clip is selected, recording is disabled. Make sure that a clip is not selected by clicking on an empty area on the Timeline.
- 3 Speak into the microphone and check if the meter responds accordingly. You can use the **Windows audio mixer** to adjust the level of the microphone.
- 4 Click **Start** and begin speaking into the microphone.
- 5 Press **[Esc]** or click **Stop** to end recording.
Note: The best way to record narrations is to do the recording in 10 to 15-second sessions. This makes it easier to remove a badly recorded narration and redo it. To remove, just select the clip on the Timeline and press **[Delete]**.

Adding background music


Corel VideoStudio Pro can record and convert sound tracks from your CD into WAV files and then insert them onto the Timeline.

Corel VideoStudio Pro also supports WMA, AVI, and other popular audio file formats which you can directly insert onto the Music Track.

Importing music from an audio CD

You can import music tracks from an audio CD. Corel VideoStudio Pro copies the CDA audio file then saves it in your hard drive as a WAV file.

To import music from an audio CD

- 1 Click  in the Library Panel and open the Options Panel.
- 2 In the **Music & Voice** tab panel, click **Import from Audio CD**. This opens the **Rip CD Audio** dialog box. To check if the disc is detected, ensure that **Audio drive** is enabled.
- 3 Select the tracks to be imported in the **Track List**.
- 4 Click **Browse** and select the destination folder where the imported files will be saved.
- 5 Click **Rip** to start importing the audio tracks.

SmartSound


The **Auto Music Maker** feature of Corel VideoStudio Pro lets you easily create high-quality sound tracks from royalty-free music and use them as background music in your project. You can have different tempos or musical instrument variations per music.



Auto Music Maker utilizes the patented SmartSound[®] Quicktracks[®] technology in sound track creation and features a variety of SmartSound royalty-free music.

With SmartSound, you can set the feel of your movie with the background music of your choice. **Set Mood** allows you to adjust parameters to change the mood or feel of a song. You can create several moods for a single song.

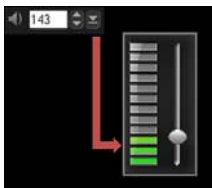
To add third-party music


- 1 Click  in the Library Panel and open the Options Panel.
- 2 Click the **Auto Music** tab.
- 3 Select how the program will search for music files in **Scope**.
- 4 Select the **Library** from where to import the music.

- 5 Select the music to use under **Music**.
- 6 Select a **Variation** of the selected music. Click **Play Selected Music** to play back the music with the variation applied.
- 7 Set the **Volume level** then click **Add to Timeline**.
Note: Select **Auto trim** to automatically trim the audio clip or cut down to the desired duration.

Using the Clip Volume Control

You will find the volume control in the **Music & Voice tab**. Clip volume represents the percentage of the original recorded volume. Values range from **0** to **500%**, where **0%** completely silences the clip and **100%** retains the original recorded volume.



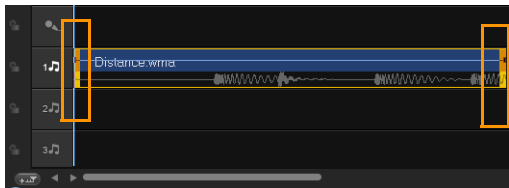
You can also trim or split audio clips from the Preview Window. Drag the **Trim Markers** to trim the audio clip. You can also move the Scrubber and use the **Mark-in / Mark-out** buttons to trim the clip or click  to split the clip.



Trimming and cutting audio clips

After recording voice and music, you can easily trim your audio clips in the Timeline. There are two ways to trim audio clips:

- In the Timeline, a selected audio clip has two handles that can be used for trimming. Just grab a handle, either from the beginning or end, and drag it to shorten a clip.



- Drag the **Trim markers**.



Stretching audio duration

The time stretch feature allows you to stretch an audio clip to match video duration without distorting its pitch. Normally, stretching audio clips to fit the project results in a distorted sound. The time stretch feature will make the audio clip sound like it is just played in a slower tempo.



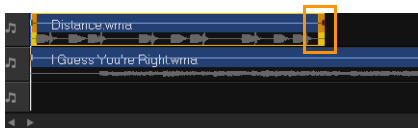
When you stretch an audio clip by 50-150%, the sound will not be distorted however, if stretched below or above that range the sound may be distorted.

To stretch the duration of an audio clip

- 1 Click  in the Library Panel and open the Options Panel.



- 2 In the **Music & Voice** tab panel, click **Playback Speed** to open the **Playback Speed** dialog box.
- 3 Enter a value in **Speed** or drag the slider to change the speed of the audio clip. A slower speed makes the clip's duration longer while a faster speed makes it shorter.

Note: You can specify how long the clip will play in **Time stretch duration**. The speed of the clip will automatically adjust to the specified duration. This feature will not trim the clip when you specify a shorter time.




You can stretch the time of an audio clip on the Timeline by holding [Shift] then dragging the handles on the selected clip.

Fade-in/out

Background music that starts and ends gradually is commonly used to create smooth transitions. For each of your music clips, you can click  and  to fade-in and fade-out the volume at the start and end of the clip.

Audio view

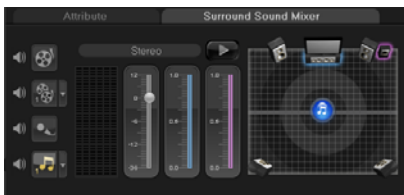
The key to making narrations, background music, and existing audio of your video clips blend well together is to control the relative volume of your clips.

To blend the different audio tracks in your project, you can click  in the toolbar. If you are in 5.1 mode, the Surround Sound Mixer is displayed. If in Stereo mode, the 2-Channel Mixer is displayed.

Using the Surround Sound Mixer

Unlike a stereo stream that carries only two audio channels, Surround Sound has five separate audio channels encoded into one file which is delivered to five speakers and one sub-woofer.


The Surround Sound Mixer has all the controls to position sounds around the listener, outputting audio through the 5.1 configuration of multiple speakers. You can also use this mixer to adjust the volume for stereo files, making it sound as if the audio moves from one speaker to another.



Adjusting stereo channels

In stereo files (two channels), a single waveform represents the left and right channels.

To use stereo mode

- 1 Go to **Settings** and disable or uncheck **Enable 5.1 Surround** in the menu.
- 2 Click  in the toolbar.
- 3 Click on the Music Track.
- 4 Click **Play** in the Options Panel.
- 5 Click the music note symbol in the center of the Surround Sound Mixer. Drag it to either right or left, depending on your preferred sound position.

Note: Moving the note symbol will affect the sound coming from your preferred direction.


- 6 Drag **Volume** to adjust the volume level of the audio.

Mixing Surround Sound

All audio channels in Surround Sound have a set of similar controls that you will find in the stereo configuration of this panel, plus a few more specific controls.

- **Six-channel VU Meter:** Front Left, Front Right, Center, Sub-woofer, Surround Left, Surround Right.
- **Center:** Controls the amount of output sound from the center speaker.
- **Sub-woofer:** Controls the amount of low-frequency sound output.

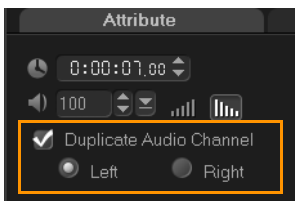
To use Surround Sound mode

- 1 Go to **Settings** and enable or check **Enable 5.1 Surround** in the menu.
- 2 Click  in the toolbar.
- 3 Click the music note symbol in the center of the Surround Sound Mixer. This time, drag it to any of the six channels depending on your sound position preference. Repeat steps 1 and 2 in using stereo mode.
- 4 Drag the **Volume, Center and Sub-woofer** to adjust sound controls of your audio

Note: You can also adjust the sound position preference of your tracks in **Video, Overlay and Voice**. To do this, click your preferred track button and repeat steps 2 to 3.


Duplicating an audio channel

Audio files sometimes separate the vocal sound from the background audio and put them in different channels. Duplicating an audio channel allows you to mute the other channel.




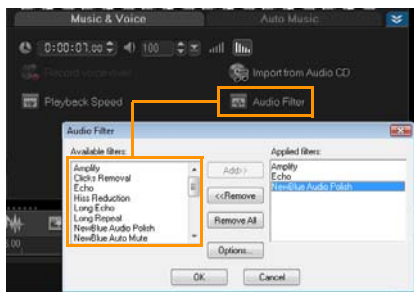
To duplicate an audio channel, click  in the toolbar. Click the **Attribute** tab and select **Duplicate audio channel**. Choose which audio channel to duplicate this may be **Left** or **Right**.

Applying audio filters

Corel VideoStudio Pro allows you to apply filters to your audio clips in the **Music** and **Voice** Tracks. Click  in the Library Panel and open the **Options Panel** to display the Music & Voice tab. Click **Audio Filter** in the Options Panel to apply audio filters. Ensure that you are in the **Timeline View**.

To apply audio filters

- 1 Click  in the Library Panel and open the Options Panel.
- 2 Select the audio clip on which to apply an audio filter.
- 3 In the **Music & Voice tab**, click **Audio Filter**. This opens the **Audio Filter** dialog box.
- 4 In the **Available filters** list, select the desired audio filters and click **Add**.



Note: An audio filter can be customized if the **Options** button is enabled. Click Options to open a dialog box where you can define the settings for the particular audio filter.

- 5 Click **OK**.

Share





Share your project in a format that is suitable for your audience or purpose. You can export your rendered movie as a video file, burn your project as an AVCHD, DVD and BDMV disc complete with menus, export to mobile devices or upload directly to your YouTube or Vimeo accounts.






This section contains the following topics:

- The Share Step Options Panel
- Creating movie templates

The Share Step Options Panel

In the **Share** tab, Corel VideoStudio Pro displays the Media Clips Library and the Share Options Panel. In the Share Options Panel are the following tasks:


-  **Create Video File:** Creates a video file of your project with your specified project settings.
-  **Create Sound File:** Allows you to save the audio segment of your project as a sound file.
-  **Create Disc:** Invokes Corel® DVD Factory™ Pro 2010 that lets you output your project in AVCHD, DVD, or BDMV format.
For more information on Corel DVD Factory Pro 2010, see the **Online Help**.
-  **Upload to YouTube:** Allows you to share videos online using your **YouTube** account.

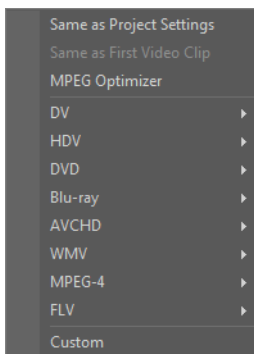
-  **Upload to Vimeo:** Allows you to share videos online using your **Vimeo** account.
-  **Project Playback:** Clears the screen and displays the whole project or a selected segment against a black background. It can also output to a videotape if you have a VGA to a TV converter, camcorder, or a video recorder connected to your system. It also allows you to manually control the output device when recording.
-  **DV Recording:** Allows you to record a selected video file onto a DV tape using a DV camcorder.
-  **HDV Recording:** Allows you to record a selected video file onto a DV tape using an HDV camcorder.
-  **Export to Mobile Device:** A video file can be exported to other external devices such as iPhone, iPod Classic, iPod Touch, Sony PSP, Pocket PC, smartphone, Nokia mobile phones, Windows Mobile-based devices and SD (Secure Digital) cards. You can only export your project after you have created a video file.

Create video file

Before rendering your entire project into a movie file, select **File: Save** or **Save As** to save it first as a Corel VideoStudio Pro project file (*.VSP). This allows you to return to your project anytime and make edits.

To create a video file of the entire project

- 1 Click  **Create Video File** in the Share Options Panel. A pop-up menu showing several options of creating a video file will be displayed.



- 2 To create a movie file using the current project settings, select **Same as Project Settings**.

Or, select one of the preset movie templates. These templates let you create a movie file that is suitable for the Web or for output to DV, DVD, WMV, and MPEG-4.

Note: To check current project settings, select **Settings: Project Properties**. To check the saving options provided by a movie template, select **Settings: Make Movie Templates Manager**.

You can also use the settings of the first video clip in the Video Track by selecting **Same as First Video Clip**.

- 3 Enter the desired file name for your movie and click **Save**. The movie file will then be saved and placed in the **Video Library**.

Note: To save on rendering time, use the same settings for your source video (e.g. captured video), Corel VideoStudio Pro project, and movie template.

You can also render your project partially. SmartRender technology saves time when generating previews by rendering only the parts that have been modified from your last render operation.



You can click **Pause** on the progress bar to stop rendering, and you can resume whenever you are ready. You can also enable playback while rendering or stop the preview for a faster and more efficient rendering of your project.



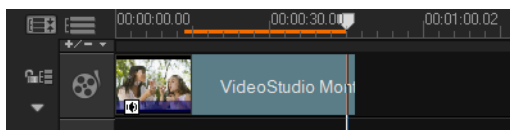
To create a video file of the preview range


- 1 Make sure that no clip is selected by clicking on the Timeline or by clicking **Project** in the Preview Window.

- 2 Select a preview range using the **Trim Markers**. You may also drag the triangle along the ruler then press **[F3]** and **[F4]** to mark the start and end points respectively.



Note: An orange line representing the selected range should appear on the Timeline ruler.



- 3 Click  **Create Video File** in the Options Panel.
- 4 Select a movie template.
- 5 In the **Create Video File** dialog box, click **Options**. In the Options dialog box, select **Preview range**. Click **OK**.
- 6 Enter a **file name** and click **Save**.


Optimizing MPEG video settings

MPEG Optimizer makes creating and rendering movies in MPEG format a lot faster. It analyzes and finds the best MPEG settings or the **Optimal project settings profile** to use and maintains the quality of your project. As an additional feature, you can now specify the target file size of your output to comply with file size limitations for your desired output.

Upon clicking Create Video File, select **MPEG Optimizer** from the pop-up menu. Corel VideoStudio Pro displays the **MPEG Optimizer** dialog box where it shows the resulting file size of your project should you choose to apply the optimization.

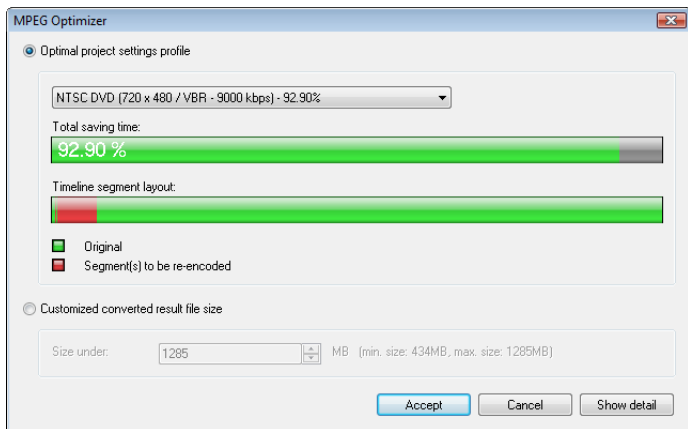
The MPEG Optimizer automatically detects changes in your project and renders out only the edited portions for faster rendering times.

To use MPEG Optimizer

- 1 In the Share Step Options Panel, click  **Create Video File** and select **MPEG Optimizer**.

Note: MPEG Optimizer is automatically enabled when an MPEG movie template is selected. To stop showing **MPEG Optimizer** dialog box when selecting MPEG movie templates, deselect **Show MPEG Optimizer dialog box** in **Preferences: General**.

- 2 The **MPEG Optimizer** dialog box appears.



- 3 Choose from the following options:
 - **Optimal project settings profile** - Lets the program to determine the optimal project settings for your output.
 - **Customized converted result file size** - Lets you enter your desired file size output. Video and Audio Settings automatically adjust to your specified file size.
- 4 Click **Accept**.


Create sound file

Sometimes, you want to save the audio track of your video project in a separate audio file. This is especially useful when you want to use the same sound with another set of images, or when you want to convert the audio of a captured live performance into sound files. Corel VideoStudio Pro makes it easy for you to create an audio file of your project in MP4, OGG, WAV or WMA format.


To create an audio file

- 1 Open your project and click the **Share Step**.

Note: You can also create a sound file from an existing video file by selecting it in the Library.

- 2 Click  **Create Sound File**.
- 3 From the **Save as type** list, select the audio format you want to use and select **Options** to display the **Audio Save Options** dialog box.
- 4 Fine tune your audio attributes and click **OK**.
- 5 Enter a file name and click **Save**.

Create disc

Creating video disc is a popular way to share your movie. Click  **Create Disc** in the Share Options Panel to launch **Corel DVD Factory Pro 2010** where you can burn movie project or video to create your own DVD or Blu-ray Disc.




You may also launch Corel DVD Factory Pro 2010 by choosing **Burn** in the Corel VideoStudio Pro Launcher.

Export to mobile device

A video file can be exported to other external devices such as iPod, iPhone, Sony PSP, mobile phones, and Windows-based mobile devices such as smartphones and Pocket PCs. You can only export your project after you have created a video file.

To export to a mobile device

- 1 Select a video clip from the Library.
- 2 Click  **Export to Mobile Device** and select the video property.
- 3 In the **Save** dialog box, type the file name and click the device where to export your movie.
- 4 Click **OK**.

Exporting your movie

Corel VideoStudio Pro provides you with a number of ways to export and share a video file. A video file can be exported to a Web page, sent by e-mail, or set as a desktop screen saver.

Select a video file in the Library. Go to **File**, select **Export** then choose the type of output for your video from the pop-up menu.

Output video file to a different format

After you create a final video file of your project or you select a video file that is in the Library. Go to **File** and select **Export**. Select the output format you want for your movie from the Export pop-up menu. You cannot export project files hence, you need to convert .vsp files to an acceptable format.

Setting your video as your Movie Screen Saver

Personalize your desktop computer by creating your own video file then setting it as your screen saver.


To set a video as your desktop screen saver

- 1 Select a **.wmv** file from the Library.
Note: WMV files are played by the built-in player in Windows.
- 2 Go to **File: Export** and select **Movie Screen Saver**. The Display Properties dialog box will appear with the video file as the selected screen saver.
- 3 Click **OK** to apply the settings.

Project Playback

Project Playback is used to output your entire project or part of it to a DV camcorder. This also gives you an actual size preview of your movie using the entire screen of either a PC or TV monitor. You can only output your project on a DV camcorder if your project is using a DV AVI template. How your video is played back will depend on the **Playback method** option that you selected in **Preferences**.


To play back your project in actual size

- 1 In the Share **Options Panel**, click  **Project Playback**.
- 2 In the **Project Playback - Options** dialog box, select **Entire project** or **Preview range**, then click **Finish** to start viewing the project in full screen.
- 3 To stop the play back, press **[Esc]**.
Note: If you only want to output the preview range of your project, select **Preview range**.

Record to a DV camcorder

After editing your project and creating a video file, Corel VideoStudio Pro allows you to record the video to your DV camcorder. You can only record a video that is using DV AVI format to your DV camcorder.

To record a movie to your DV camcorder

- 1 Turn your camcorder ON and set it to **Play** mode (or **VTR / VCR** mode). See your camcorder's manual for specific instructions.
- 2 Click the **Share Step**.
- 3 Select a compatible DV AVI file from the Library.
- 4 Click  **DV Recording**.
- 5 The **DV Recording - Preview Window** dialog box opens. You can preview the video file here. After you are done previewing, click **Next**.
- 6 In the **Project Playback - Record Window** dialog box, use the **Navigation Panel** to go to the section of the DV tape where to start recording.

Note: Click **Transmit to device unit for preview** to preview your project on the DV camcorder's LCD monitor.


- 7 Click **Record**. After you are done recording your project to the DV camcorder, click **Finish**.

Note: Before recording a video file back to your DV camcorder, make sure the video is saved with the correct codec. For example, the codec **DV Video Encoder** usually works well for most NTSC DV camcorders. You can select it from the **Compression** tab in the **Video Save Options** dialog box.

Record to an HDV camcorder

To record your finished project to an HDV/HD camcorder, you must first render it as HDV/HD-encoded MPEG-2 transport stream file.

To record a movie to your HDV camcorder


- 1 Turn your camcorder ON and set it to **Play/Edit** mode. See your camcorder's manual for specific instructions.
- 2 In Share Step Options Panel, click  **HDV Recording** and select a transport stream template.

- 3 Enter a file name in **Create Video File** dialog box.
- 4 Corel VideoStudio Pro renders the project. When done, **HDV Recording - Preview Window** dialog box opens. You can preview the video file here.
- 5 Click **Next** to start recording.
- 6 In the **Project Playback - Record Window** dialog box, use the **Navigation Panel** to go to the section of the DV tape where to start recording.
Note: Click **Transmit to device unit for preview** to preview your project on the HDV camcorder's LCD monitor.
- 7 Click **Record**. After recording your project to the HDV camcorder, click **Finish**.

Share videos online

Share your video projects online by uploading your videos to YouTube and Vimeo. You can access these sites from within Corel VideoStudio Pro.

To upload your video to YouTube


- 1 Select a video file or clip from the Library.
- 2 In the **Share** step, click  **Upload to YouTube**. The **Open Video File** dialog box will open.
- 3 Select a video file or clip from the directory folder and click **Open**. This will launch the **Log-in YouTube** window.
- 4 If you already have an account, enter username and password.
Note: If you do not have an existing YouTube account, click **Join YouTube** to establish an account and follow the on-screen instructions.
- 5 Click **Next**. The Copyright Disclaimer page will appear. Check the agreement statement and click **Next**. The metadata dialog box will

appear. Fill in the necessary information about the video and click **Next**. This shows the video file properties.

- 6 Click **Upload Video**. The Upload Video Progress bar shows the progress of your upload.
- 7 Click **OK** when video has been successfully uploaded. This launches the YouTube web page where you can check out the recently uploaded video file.

Note: You can also upload videos to YouTube from Corel VideoStudio Express 2010.

To upload your video to Vimeo

- 1 Select a video file or clip from the Library.
- 2 In the Share step, click  **Upload to Vimeo**. A pop-up menu will appear.
- 3 If you have already saved your video file, select **Browse for a File to upload** to locate the video from the file directory. If you have not saved your video, select from the list of video qualities. Your video will be saved following the quality settings you selected.
- 4 If you already have an account, enter your email and password.
Note: If you do not have an existing Vimeo account, click **Join Vimeo** to establish an account and follow the on-screen instructions.
- 5 Click **Log in**. The authorization appears.
- 6 Click **Yes, authorize this app!** The metadata dialog box appears.
- 7 Fill in the necessary information such as your video title, description, privacy settings and additional tags.
- 8 Click **Next** to upload your video. The Upload Video Progress bar shows the progress of your upload.
- 9 Click **Done** when uploading is completed. This launches the Vimeo web page where you can check out the recently uploaded video file.

Creating movie templates


Movie templates contain settings which define how to create the final movie file. By using the preset movie templates provided by Corel VideoStudio Pro or by creating your own templates in the **Make Movie Templates Manager**, you can have multiple variations of your final movie. For instance, you can create movie templates that provide high quality output for DVD and video recording, and also set up movie templates that give lower quality but acceptable outputs for different purposes, such as Web streaming and e-mail distribution.

To create movie templates

- 1 Select **Settings: Make Movie Templates Manager**. The **Make Movie Templates Manager** dialog box opens.
- 2 Click **New**. In the **New Template** dialog box, select the **File format** and type in a **Template name**. Click **OK**.
- 3 In the **Template Options** dialog box, set the options you want in the **General** and **Compression** tabs.

Note: The available options in the tabs will depend on the type of file format of the template.

- 4 Click **OK**.

Note: Movie templates will appear in a selection menu when you click  **Create Video File** in the **Share Step**. If you do not want to use a movie template, you can select **Custom** from the pop-up menu. This allows you to choose your own settings for creating the final movie or simply use the current project settings.

Note: To modify the settings of a movie template, click **Edit** in the **Make Movie Templates Manager** dialog box.

Appendix: Shortcuts

This section contains the following topics:

- Menu command shortcuts
- Step Panel shortcuts
- Navigation Panel shortcuts
- Timeline shortcuts
- Multi-trim Video shortcuts
- Others

Menu command shortcuts

Ctrl + N	Create a new project
Ctrl + O	Open a project
Ctrl + S	Save a project
Alt + Enter	Project Properties
F6	Preferences
Ctrl + Z	Undo
Ctrl + Y	Redo
Ctrl + C	Copy
Ctrl + V	Paste
Del	Delete
F1	Help

Step Panel shortcuts

Alt + C	Go to Capture Step
Alt + E	Go to Edit Step
Alt + F	Go to Effect in the Gallery list
Alt + O	Go to Overlay in the Gallery list
Alt + T	Go to Title in the Gallery list
Alt + A	Go to Audio in the Gallery list
Alt + S	Go to Share Step
Up	Go to the previous step
Down	Go to the next step

Navigation Panel shortcuts

F3	Set mark-in
F4	Set mark-out
Ctrl + 1	Switch to Project mode
Ctrl + 2	Switch to Clip mode
Ctrl + P	Play/Pause
Space	Play/Pause
Shift + Play button	Play the currently selected clip
Home	Return to the starting segment or cue
Ctrl + H	Home
End	Move to the end segment or cue
Ctrl + E	End
Ctrl + U	Previous frame
Ctrl + T	Next frame

Ctrl + R	Repeat
Ctrl + L	System Volume
Ctrl + I	Split Video
Tab	Toggle between the Trim Handles and Scrubber.
Enter	When the left Trim Handle is active, pressing [Tab] or [Enter] switches to the right handle.
Left	If you pressed [Tab] or [Enter] to make the Trim Handles or Scrubber active, use the Left-arrow key to move to the previous frame.
Right	If you pressed [Tab] or [Enter] to make the Trim Handles or Scrubber active, use the Right-arrow key to move to the next frame.
ESC	If you pressed [Tab] or [Enter] to activate and toggle between the Trim Handles and Scrubber, you can press [Esc] to deactivate the Trim Handles / Scrubber.

Timeline shortcuts

Ctrl + A	Select all clips on the Timeline. Single title: Select all characters in the on-screen edit mode.
Ctrl + X	Single title: Cut selected characters in the on-screen edit mode.
Shift + Click	Select multiple clips in the same track. (To select multiple clips in the Library, Shift+Click or Ctrl+Click the clips.)

Left	Select the previous clip on the Timeline.
Right	Select the next clip on the Timeline.
+ / -	Zoom in/out.
Ctrl + Right	Scroll forward.
Ctrl + Left	Scroll backward.
Ctrl + Up / Page Up	Scroll up.
Ctrl + Down / Page Down	Scroll down.
Home	Move to the start of the Timeline.
End	Move to the end of the Timeline.
Ctrl + H	The previous segment.
Ctrl + E	The next segment.

Multi-trim Video shortcuts

Del	Delete
F3	Set mark-in
F4	Set mark-out
F5	Go backward in the clip
F6	Go forward in the clip
Esc	Cancel

Others

ESC

Stop capturing, recording, rendering, or close a dialog box without making any changes. If you switched to Full Screen Preview, press [**Esc**] to return to the Corel VideoStudio Pro interface.

Double-click a transition in the Effects Library

Double-clicking a transition in the Library automatically inserts it into the first empty transition slot between two clips. Repeating this process will insert a transition into the next empty transition slot.

Glossary

Analog

A signal that is not digital. Most VCRs, AV in/out, S-VIDEO, and stereos are analog. Computers are digital, dealing in ones and zeros. Information from an analog source must be digitized to be used on a computer.

Aspect Ratio

The relationship of width to height for a given image or graphic. Keeping or maintaining the aspect ratio refers to the process of maintaining size relationships when either the width or height of an image or graphic is changed.

AVI

Audio-Video Interleave is a digital video file format designed specifically for the Microsoft Windows environment.

AVCHD

Advanced Video Codec High Definition is a video format that is designed for camcorder use. It uses a disc structure designed for Blu-ray Disc / high definition compatibility and can be burned on standard DVDs.

BD

Blu-ray Disc is a new optical disc format that uses a blue-violet laser for high definition video recording and playback. Each disc also allows more information to be burned in 25-GB (single-layer) and 50-GB (dual-layer) discs, offering more than five times the capacity of standard DVDs.

Capture

The recording of video or images to a computer hard disk.

Capture Plug-ins

These are utilities integrated with Corel VideoStudio Pro that allow the program to recognize capture devices and automatically detect them when they are connected to the computer.

Clip

A short section or part of a movie. A clip can be audio, video, still images or a title.

Codec

A special algorithm or program that is used to process video. The origin of the word is *compression/decompression* or *coder/decoder*.

Color Clip

A simple background color used in a movie. It is often used for titles and credits since they stand out clearly against the solid color.

Composite Video

A video signal that combines luminance and chrominance. NTSC and PAL are examples of composite video.

Compression

Making a file smaller by removing redundant data. Nearly all digital video is compressed in some way or another. Compression is achieved through a codec.

Data Rate

The amount of data per second that is transferred from one part of your computer to another. These data rates vary in different types of media.

Device Control

A software driver that allows programs to control video sources like the camcorder or VCR.

Digital

Computer data consisting of ones and zeros. Contrast digital information with analog.

Digitizing

The process of converting analog input to a digital form so that it can be used by the computer.

DNLE

Digital Non-Linear Editing is a method of combining and editing multiple video clips to produce a finished product. DNLE offers random access to all source materials and all portions on the master tape at all times during the editing process.

Driver

A software program that controls the connection between a specific device and a computer.

DV

Digital Video with a capital "D" and a capital "V" stands for a very specific format of video, just like VHS or High-8. This format can be understood (played back, recorded) by your camcorder and also by your computer, if you have the proper hardware (capture card) and software (DV codec). DV can be copied from your camcorder to your computer, and then back to your camcorder (after editing, of course) without any loss of quality.

DVD

DVD (Digital Versatile Disc) is popular in video production because of its high quality and broad compatibility. Not only does it guarantee superb audio and video quality, it can also hold several times more data than VCDs and SVCDs. DVDs make use of the MPEG-2 format, which has a much bigger file size than MPEG-1, and can likewise used to produce discs that are single- or double-sided, and single- or dual-layer. They can be played on standalone DVD players or on the DVD-ROM drive of your PC.

Effect

In Corel VideoStudio Pro, an effect is a special computer generated transition between two video clips.

Export

The process of sharing files between applications. When you export a file, the data is usually converted into a format that is recognizable by the receiving application. The original file remains unchanged.

Fade

A transition effect where the clip gradually disappears or appears. In video, the picture would gradually change to or from a solid color; for audio, the transition would be from full volume to complete silence or vice-versa.

FireWire

A standard interface used for connecting digital audio/video devices such as DV camcorders to computers. It is the Apple's trademarked name for the IEEE-1394 standard.

Footage

A length of recorded film intended for use in a larger project.

Frame

A single image in a movie.

Frame Rate

The number of frames per second in a video. NTSC video is commonly 29.97 frames per second (fps) while PAL has 25 fps, but smaller video files can be created on the computer by using lower frame rates, like 15 fps (not suitable for VCD or DVD).

Frame Size

The size of displayed images in video or animation sequences. If an image intended for the sequence is larger or smaller than the current frame size, it must be resized or cropped.

HDV

HDV is a format for recording and playback of high-definition video on a DV cassette tape. Announced in 2003 as an affordable high definition format, HDV video supports resolutions up to 1440×1080 and is compressed with MPEG-2. HDV audio is compressed using MPEG-1 Layer 2.

HiColor

A 16-bit image data type that can contain up to 65,536 colors. The TGA file format supports images of this type. Other file formats require prior conversion of a HiColor image into True Color. For displays, HiColor normally refers to 15-bit (5-5-5) display adapters that can display up to 32,768 colors.

IEEE-1394

Also known as Firewire, 1394 is standard that allows high-speed serial connections between the computer and an HDV/DV camcorder, or other high speed peripheral device. Devices conforming to recent updates to this standard are capable of transmitting digital data at 400 megabits per second.

Instant Playback

Allows you to view the entire project without rendering. It instantly plays all the clips in the Preview Window without creating a temporary preview file in your system. Playback quality is dependent on your hardware configuration.

If **Instant Playback** results in drop frames, then use **High Quality Playback** to preview a project.

Key frame

A specific frame in a clip that is flagged for special editing or other activities in order to control the flow, playback or other characteristics of the completed animation. For example, when applying a video filter, assigning different effect levels on the beginning and end frames shows a change in the appearance of the video from start to end of the video clip. When creating a video, assigning key frames on parts where there

are high data transfer requirements helps control how smoothly the video plays back.

Library (Corel VideoStudio Pro)

The Library is the repository for all of your media clips. You can store video, audio, titles, or color clips in the Library and instantly retrieve them for use in a project.

Link

A method of storing previously saved information in another program without significantly affecting the size of the resulting file. Linking offers another advantage in that the original file can be modified in its original program and the changes will automatically be reflected in the program where it is linked.

Mark In/Out

Points in a clip that have been marked for editing and trimming purposes. A section can be selected from a longer clip by setting its beginning (Mark in) and ending (Mark out).

MP3

Abbreviation of MPEG Audio Layer-3. MP3 is an audio compression technology that produces near CD audio quality at a very small file size, making it transfer quickly over the Internet.

MPEG-1

A standard for video and audio compression used in many products like VCD.

MPEG-2

A subset of MPEG-1. It's a standard for video and audio compression used in products like DVD.

MPEG-4

A video and audio compression format that is commonly used in mobile devices and video streaming in the Internet that provides high-quality videos at lower data rates.

NLE

Non-Linear Editing. In the past, conventional editing on a VCR was necessarily linear because of the need to access clips on a video tape in order. Computer editing can be done in any order that is convenient.

Noise

An unwanted residual hiss or random dot patterns onscreen are referred to as noise. These are electronic interferences that are most common in analog audio and video.

NTSC/PAL

NTSC is the video standard in North America, Japan, Taiwan, and some other regions. Its frame rate is 29.97 fps. PAL is common in Europe, Australia, New Zealand, China, Thailand, and some other Asian places, which has a frame rate of 25 fps. There are other differences. In the world of DV and DVD, NTSC has the video resolution of 720×480 pixels, while PAL has 720×576 pixels.

Overlay

These are the superimposed video or image clips over existing clips in your project.

Plug-ins

Plug-ins are utilities that add more functions and effects to a program. In Corel VideoStudio Pro, plug-ins have made it possible for the program to automatically recognize capture devices as well as output videos for different purposes such as for e-mail, Web page, video greeting cards, and DV recording.

Profile

A profile covers various attributes for a Windows Media Format file such as bit rate, number and type of streams, compression quality, frame size and so on.

Project File

In Corel VideoStudio Pro, a project file (*.VSP) contains the required information to link all associated image, audio, and video files. With Corel VideoStudio Pro, you must open a project file before you can edit a video.

Render

Rendering is the process of making a finished movie from the source files in a project.

Scenes

A scene is a series of continuous frames. In Corel VideoStudio Pro, each scene that is captured by using the Split by Scene feature is based on the recording date and time of the footage. In a captured DV AVI file, scenes can be separated into several files based on the recording date and time of the footage or based on changes in the content of the video. In an MPEG-1 or MPEG-2 file, the content changes are used to separate scenes into files.

Seamless Capture

As a workaround to the 4GB capture file size limitation in Windows systems that use the FAT 32 file system, Corel VideoStudio Pro automatically saves captured video as a new file when this limitation has been reached. This method, known as seamless capture, allows the capturing process to be performed uninterrupted no matter how long the footage is. Corel VideoStudio Pro performs seamless capture when capturing DV Type-1 or DV Type-2 (from DV camcorder), or when capturing MPEG video (from DV camcorder or analog capture device).

SmartRender

SmartRender technology saves time when generating previews by rendering only the parts that have been modified from your last render operation.

Split by scene

This feature automatically splits up different scenes into individual files. In Corel VideoStudio Pro, the way scenes are detected depends on which step you are in. In the Capture Step, Split by Scene detects individual scenes based on the original footage's recording date and time. In the Edit Step, if Split by Scene is applied to a DV AVI file, scenes can be detected in two ways: by the recording date and time, or by the changes in the content of the video. Whereas in an MPEG file, scenes are detected only based on the content changes.

Storyboard

A Storyboard is a visual representation of your movie. Individual clips are represented as image thumbnails on the Timeline.

Streaming

Allows large files to be played as they are being downloaded. Streaming is commonly used for large video and audio files that are made available on the Internet through video-sharing Web sites.

Template

A work pattern in a software program. They are predefined formats and settings to serve as guides in making projects.

Timecode

The timecode of a video file is a numerical way of representing the position in a video. Timecodes can be used to make very accurate edits.

Timeline

The Timeline is a graphic representation of your movie in chronological order. The relative size of clips on the Timeline gives you an accurate idea of the length of your media clips.

Title

A title can be a movie title, a caption or credit. Any text, image, or video file that overlays in your movie can be referred to as titles.

Transition Effect

A transition is a method of sequencing between two video clips, like fading from one into another. In Corel VideoStudio Pro, there are a large variety of special transitions available, and they are called Effects.

Trim

The process of editing or cropping a movie clip. Computer video can be trimmed frame by frame.

Video Filters

A video filter is a method of changing the appearance of a video clip, like mosaic and ripple.

Voice-over

The narration of a video or movie is commonly called the voice-over. This is most notable in documentaries such as nature shows.

Index

A

ActiveMovie 133

Add / Remove Chapter or Cue
25

Adding

audio files 110

clips to your project 33

third-party music 112

Adding transitions to My
Favorites 68

Adjusting color and brightness
86

Advanced Edit 12

Analog video 43

Applying motion to the Overlay
clip 100

Applying selected transition
effect to all clips 67

Attribute tab 62

Audio filters 118

B

Batch Convert 86

BD 141

Border 101

Burn 12

Burn whole tape 13

C

Capture Video 38

Capture Video Options Panel
39

Chapter Point 94

Chapter/Cue Menu 93

Chroma Key 102

Color

Color tab 62

Color clips 76

Controlling the DV camcorder
with the Navigation Panel 41

Corel Corporation 10

Corel Guide 7

Create Disc 121

Create Sound File 121

Create Video File 121

Creating 36

 movie project 36

Cue Point 93

Cue Point Manager 94

customer support 10

Customize Filter 75, 79

D

Digital TV 42

Distorting an Overlay clip 99

Duplicating an audio channel
118

DV 41

DV Quick Scan 44

DV Recording 122

DVB-T video 42

DV-to-DVD Wizard 12

E

Easy Edit 12

Edit Title 15

Editing text 71

Enhancing Overlay clips 100

Export

 Movie Screen Saver 129

F

Fade-in/out 115

Filter 78

Fit & Burn 16

Flash animations 78

G

Glossary 141

Graphic 76

H

HDV Recording 122

Help system 7

High Definition Videos 42

I

- Importing digital media 45
- Importing from Mobile Devices 47
- Instant Playback 34
- Instant timecode tip 54

K

- Key frame 80

L

- learning the application 7
 - Help system 7
- Library 26
- Library Organizer 29

M

- Make Movie Templates Manager 134
- Mark-in/out 21
- Mask & Chroma Key 101
- Mask Frame 103
- Menu Bar 20
- Mixing audio tracks 115

- Modifying text attributes 72

- MPEG Optimizer 126
- MPEG-2 40
- Multiple tracks 97
- Multi-trim Video 57
- Music Track 26

N

- Navigation Panel 20

O

- Opening an existing project 36
- Options Panel 26
- Overlay Tracks 25

P

- Painting Creator
 - Modes 108
- Panning & Zooming 89
- Pause Duration 100
- Photo
 - Photo tab 61
- Photos 50
- Play Mode 20

Playback speed 51

Preset text 70

Preview range 34

Project Playback 122

Project Properties 32

Project Timeline 23

Q

quitting the application 6

R

registering Corel products 8

Rendering 31

Repositioning the current
Overlay clip 98

Resizing an Overlay clip 99

Resizing and distorting clips 92

Rip CD Audio 112

Rotate by degree 74

Rotating text 74

S

Save DV Quick Scan Digest 15

Save DV Quick Scan Digest as

HTML 15

Saving

Smart Package 36

Trimmed clips 59

Scene detection 14

Shortcuts 135

Shuttle Slider 41

Split Audio 61

Split by scene 39, 40

starting the application 6

Step Panel 19

Storyboard View 24

Stretching audio duration 114

System Volume 21

T

technical support 10

Text Backdrop 73

The Mask transition 68

The user interface 18

Timeline View 24

Title safe area 71

Title Track 25

Toolbar 22

Transparency 101

Trim Handles 21

Trimming a clip 53

Trimming Overlay clips 98

TV footage 44

U

updating the application 9

V

Video

 Edit tab 60

Video date information 16

Video Track 25, 33

Voice Track 26

W

Working with Overlay clips 97

Corel® VideoStudio® Pro X3 User Guide

Copyright © 2010 Corel Corporation. All rights reserved.

Product specifications, pricing, packaging, technical support and information ("specifications") refer to the retail English version only. The specifications for all other versions (including other language versions) may vary.

INFORMATION IS PROVIDED BY COREL ON AN "AS IS" BASIS, WITHOUT ANY OTHER WARRANTIES OR CONDITIONS, EXPRESS OR IMPLIED, INCLUDING, BUT NOT LIMITED TO, WARRANTIES OF MERCHANTABILITY SATISFACTORY QUALITY, MERCHANTABILITY OR FITNESS FOR A PARTICULAR PURPOSE, OR THOSE ARISING BY LAW, STATUTE, USAGE OF TRADE, COURSE OF DEALING OR OTHERWISE. THE ENTIRE RISK AS TO THE RESULTS OF THE INFORMATION PROVIDED OR ITS USE IS ASSUMED BY YOU. COREL SHALL HAVE NO LIABILITY TO YOU OR ANY OTHER PERSON OR ENTITY FOR ANY INDIRECT, INCIDENTAL, SPECIAL, OR CONSEQUENTIAL DAMAGES WHATSOEVER, INCLUDING, BUT NOT LIMITED TO, LOSS OF REVENUE OR PROFIT, LOST OR DAMAGED DATA OR OTHER COMMERCIAL OR ECONOMIC LOSS, EVEN IF COREL HAS BEEN ADVISED OF THE POSSIBILITY OF SUCH DAMAGES, OR THEY ARE FORESEEABLE. COREL IS ALSO NOT LIABLE FOR ANY CLAIMS MADE BY ANY THIRD PARTY COREL'S MAXIMUM AGGREGATE LIABILITY TO YOU SHALL NOT EXCEED THE COSTS PAID BY YOU TO PURCHASE THE MATERIALS. SOME STATES/COUNTRIES DO NOT ALLOW EXCLUSIONS OR LIMITATIONS OF LIABILITY FOR CONSEQUENTIAL OR INCIDENTAL DAMAGES, SO THE ABOVE LIMITATIONS MAY NOT APPLY TO YOU.

© 2010 Corel Corporation. All rights reserved. Corel, CorelDRAW, DVD Factory, PaintShop Photo, Ulead, VideoStudio and the Corel logo are trademarks or registered trademarks of Corel Corporation and/or its subsidiaries. All other product names and any registered and unregistered trademarks mentioned are used for identification purposes only and remain the exclusive property of their respective owners.

