



Session: 409033

iSeries. mySeries.

iSeries Operations Console Intermediate Configuration

Marvin Levi

© Copyright IBM Corporation, 2004. All Rights Reserved.
This publication may refer to products that are not currently
available in your country. IBM makes no commitment to make
available any products referred to herein.

IBM CONFIDENTIAL UNTIL ANNOUNCED

iSeries. mySeries.



iSeries Operations Console Intermediate Configuration

Evaluation

- Session: 409033
- Agenda Key: 44CJ
- Session Title: iSeries Operations Console
Intermediate Configuration
- Speaker: Marvin Levi

© 2004 IBM Corporation

IBM CONFIDENTIAL UNTIL ANNOUNCED

iSeries. mySeries.



iSeries Operations Console Intermediate Configuration

Topics

- Operations Console quick overview
- Configuring console is easier
- New property page features
- Remote Control Panel
- Console takeover and recovery
- Remote Controlling System
- Questions?
- Demo – Twinax convert to LAN Console if time permits.



iSeries Operations Console Intermediate Configuration

Operations Console Sessions:

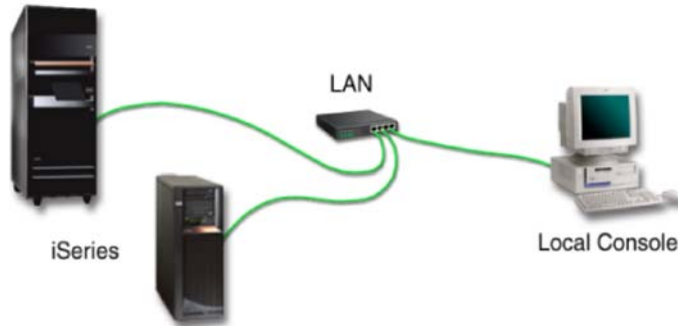
•41CQ	8:00AM	10/20/04	440182 Basics
•44CJ	12:30PM	10/20/04	409033 Intermediate
•53CL	11:00AM	10/21/04	409032 Advanced



iSeries Operations Console Intermediate Configuration

Operations Console Overview

- Operations Console allows a personal computer (PC) to become a local or remote console to your iSeries server. This eliminates the need for a twinaxial connection and allows a system administrator to monitor/control the system(s) from another location.



© 2004 IBM Corporation

IBM CONFIDENTIAL UNTIL ANNOUNCED

iSeries. mySeries.



iSeries Operations Console

- Configuring console is easier

The screenshot shows the 'Configure iSeries Operations Console - Select Configuration' dialog box. The title bar includes 'Configure iSeries Operations Console - Select Configuration' and 'V5R2'. The main text says: 'Choose the configuration that best meets your console needs. Click through the choices for more details about each.' Below this, there are five radio button options under the heading 'Configurations':

- Local console directly attached to the server
- Local console directly attached with remote access allowed
- Local console on a network (LAN)
- Local console through dial-up support
- Remote console through dial-up support

The 'Local console through dial-up support' option is circled in red. To the right of the list is a small diagram showing a PC connected to a server via a network. Below the list, it says: 'A PC can dial into the iSeries server and serve as the console.' At the bottom of the dialog are buttons for '< Back', 'Next >', 'Cancel', and 'Help'. Below the dialog box, there is a text box that reads: 'The PC is connected directly to the iSeries server. Special cables are required for the console and control panel functions.' Below this text box are buttons for '< Back', 'Next >', 'Cancel', and 'Help'.

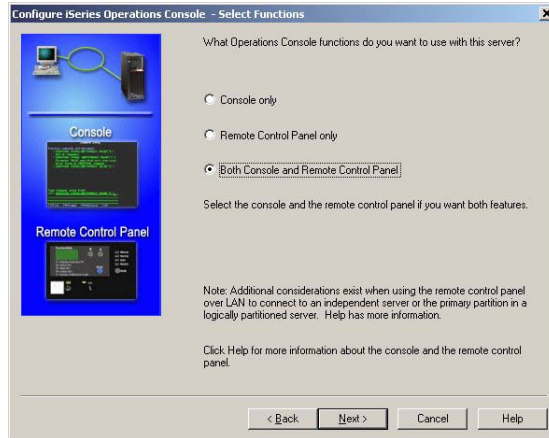
© 2004 IBM Corporation

IBM CONFIDENTIAL UNTIL ANNOUNCED

iSeries. mySeries.

iSeries Operations Console

- Configuring console is easier/ Select Functions page removed



iSeries Operations Console

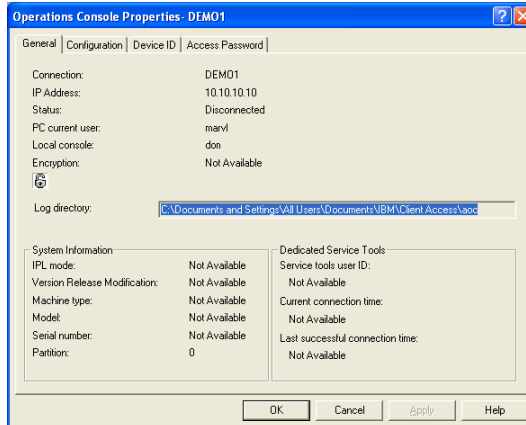
- New property page features
 - Add/remove functions through property pages
 - Re-configuration wizard removed
 - LAN configurations default with Remote Control Panel
 - Direct configurations default to console only





iSeries Operations Console

- New property page features



© 2004 IBM Corporation

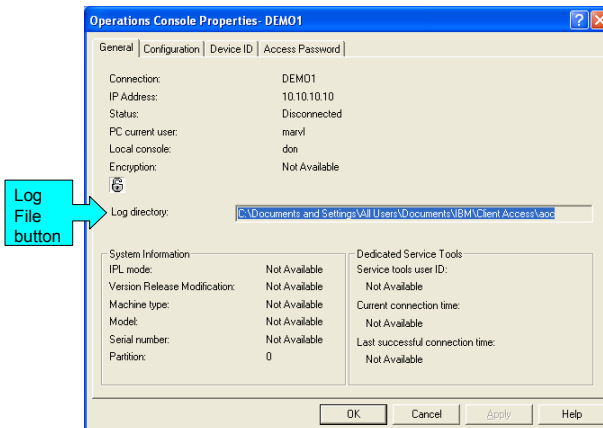
IBM CONFIDENTIAL UNTIL ANNOUNCED

iSeries. mySeries.



iSeries Operations Console

- New property page features



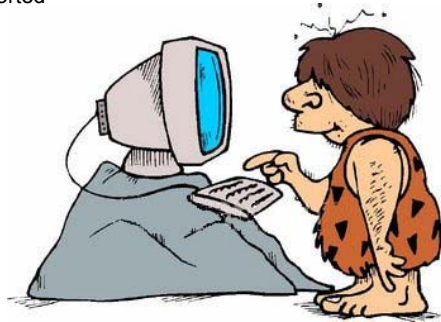
© 2004 IBM Corporation

IBM CONFIDENTIAL UNTIL ANNOUNCED

iSeries. mySeries.

iSeries Operations Console

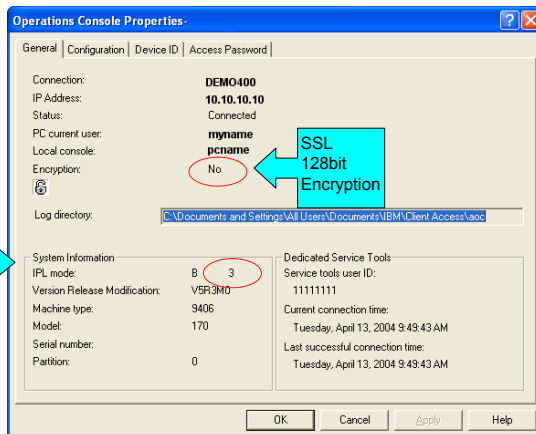
- Configuring console is easier
 - Focus on configuring a connection
 - Auto detect and configure
 - Add/remove functions through property pages
 - Windows 98 and Me are not supported



iSeries Operations Console

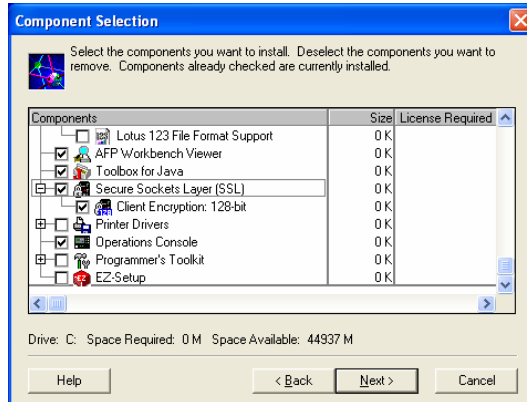
- New property page features

e.g. 3 indicates LAN console type



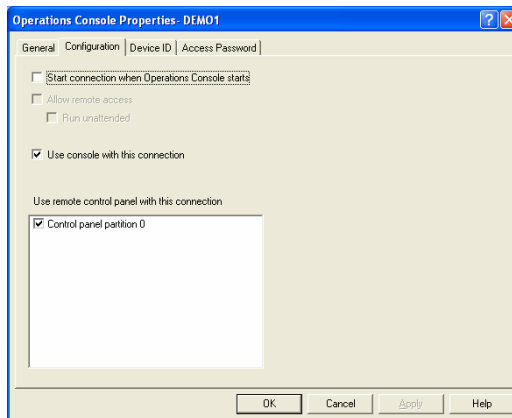
iSeries Operations Console

- New property page features/SSL 128-bit Encryption
 - Part of iSeries Access for Windows V5R3 install



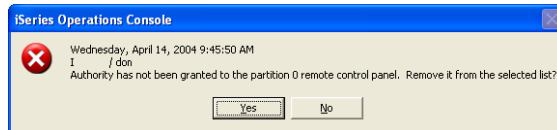
iSeries Operations Console

- Remote Control Panel



iSeries Operations Console

- Remote Control Panel
 - On connection authorization for RCP is verified

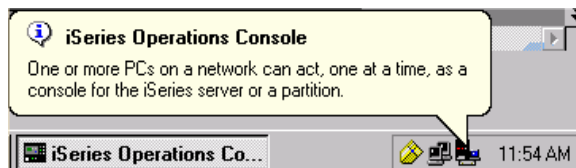


- Choosing Yes will also remove the message from appearing again
- The message is new, but the authorization has always been verified



iSeries Operations Console

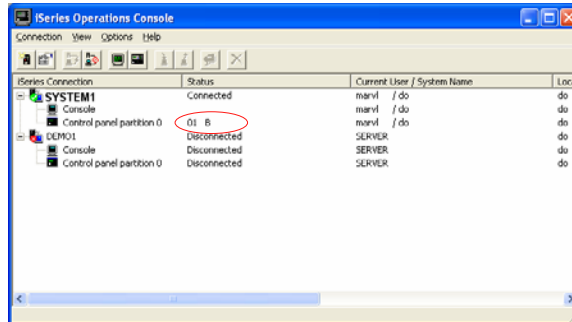
- The Operations Console icon has been added to the taskbar notification area.
- This allows Operations Console to display messages that otherwise maybe hidden behind other desktop applications.





iSeries Operations Console

- Remote Control Panel
 - Show/Hide columns
 - Move Columns
 - Improved error messages
 - System Tray Icon



© 2004 IBM Corporation

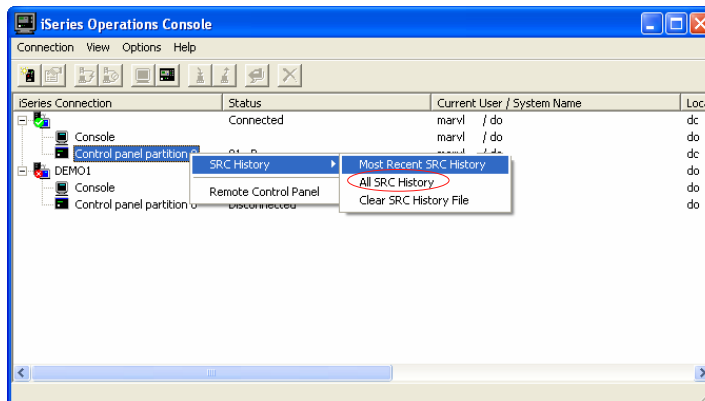
IBM CONFIDENTIAL UNTIL ANNOUNCED

iSeries. mySeries.



iSeries Operations Console

- Remote Control Panel
 - System Reference Codes/From the IPL time



© 2004 IBM Corporation

IBM CONFIDENTIAL UNTIL ANNOUNCED

iSeries. mySeries.



iSeries Operations Console

- Console takeover and recovery
 - Microsoft Winsock layer
 - Not an Alternate Console
 - Always get green on black
 - Console modes are honored
 - After a successful takeover, whether from the same device or a different device, all data sent to the console will be delivered
 - If the outage was long enough and there were many screens buffered, the screen refreshes will be rapid, but all screen data will be sent until the console is up-to-date
 - When the takeover option is turned off a console-capable device will bypass the signon screen and be taken directly to the screen showing current console status



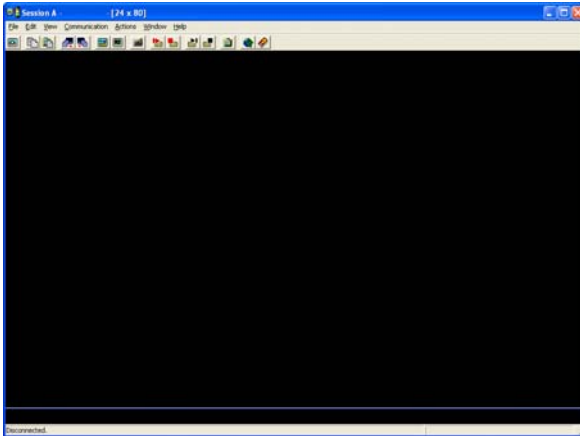
iSeries Operations Console

- Console takeover and recovery
- A new function consisting of control panel functions 65 and 21 has been created to aid in the recovery or debug of Operations Console problems. It will allow the user to do the following:
 - Change the console mode value.
 - Clear the associated LAN adapter's associated data used for Operations Console or the service tools server
 - Deactivate and reactivate the LAN adapter associated data used for Operations Console or the service tools server
 - Dump all the flight recorders commonly associated with Operations Console
 - This will reduce the need for main storage dumps which causes tremendous impact to the users.
- All of the above functions can also be done on an SST screen via native macro.



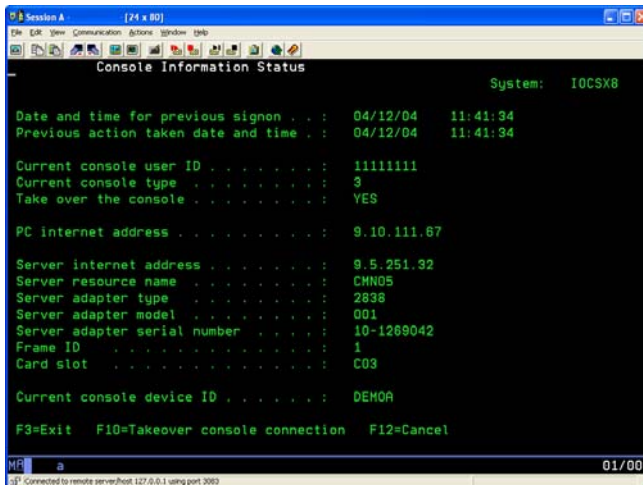
iSeries Operations Console

- Where is the console?



iSeries Operations Console Basics

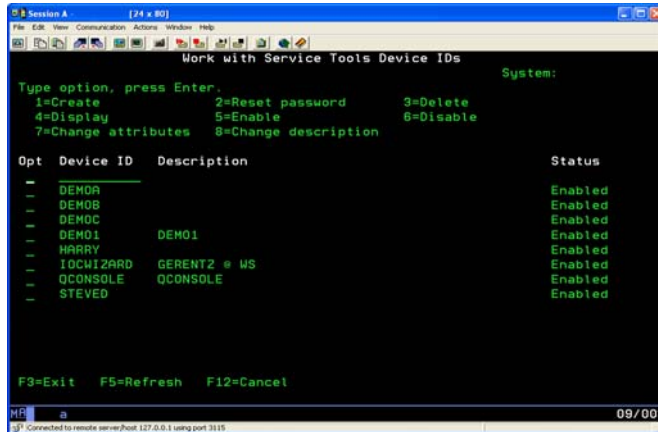
Where's the console?





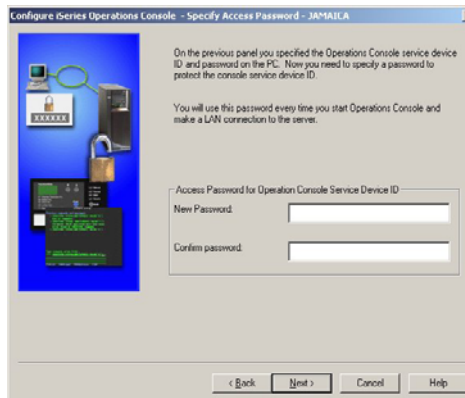
iSeries Operations Console

- Each PC requires a Service Tools Device ID (Profile)



iSeries Operations Console

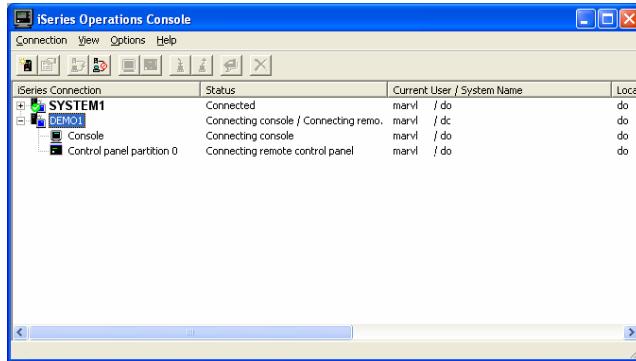
- Must remember the Access password
- The Access password can be the same on any PC
- Do not have to remember the Service Tools Device ID Password
- Should never have to re-synchronize the Service Tools Device ID Password





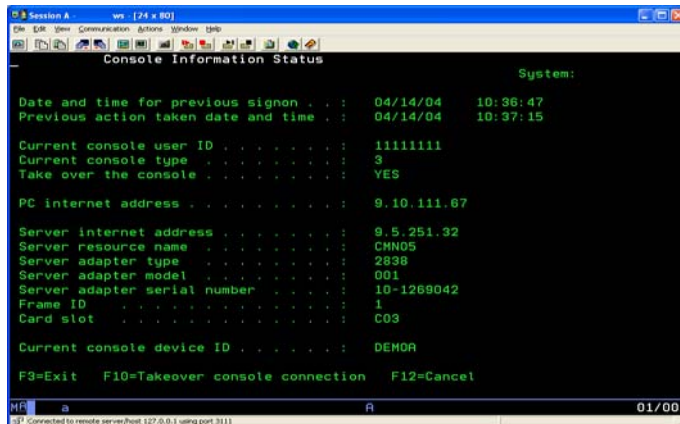
iSeries Operations Console

- Where is the console?



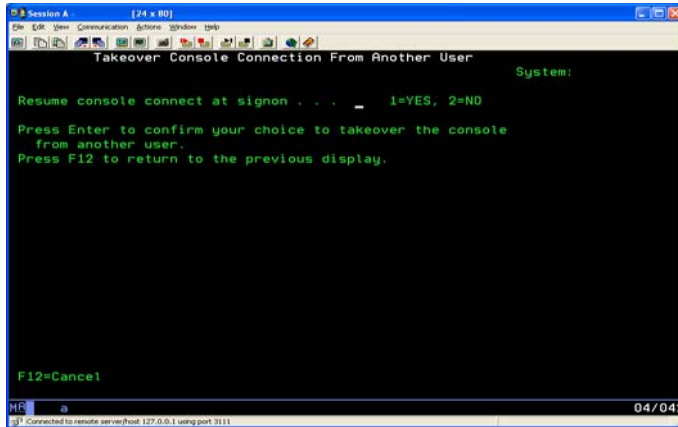
iSeries Operations Console

- Console takeover and recovery



iSeries Operations Console

- Console takeover and recovery



iSeries Operations Console

- Scenario 1 – Changing console mode from direct to LAN
 - 65 / 21 A602500A (Read mode)
 - 65 / 21 A603500B (Edit mode, increment value)
 - 21 A603500C (Set value)

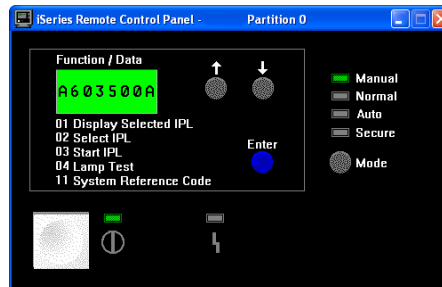
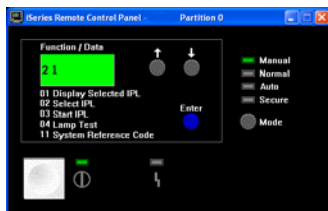
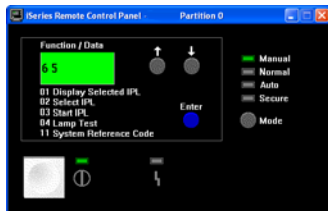


iSeries Operations Console

- Scenario 1 – Changing console mode from LAN to direct
 - 25 / 26 (CE mode, if needed)
 - 65 / 21 A603500A (Initial read back console mode value)
 - 65 / 21 A604500B (Entered edit mode and incremented value by one, if on a server supporting HMC)
 - 65 / 21 A6C3500B (increment value by one again)
 - 65 / 21 A6A3500B (increment value by one again)
 - 65 / 21 A6DD500B (increment value by one again)
 - 65 / 21 A601500B (increment value by one again)
 - 65 / 21 A602500B (increment value by one again but this is now the value we want)
 - 21 A602500C (The last 21 sets the value; causes SLIC to clean up LAN connection data, if any; activates async line)



iSeries Operations Console





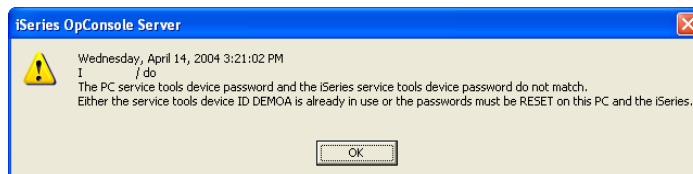
iSeries Operations Console

- 65+21 can also assist recovery or gather data in addition to changing the console mode value
 - A6C3500B will clear the LAN adapter's data
 - This is the equivalent to doing a PF6 (clear) when on the screen showing the LAN adapter's network data) and a PF7 to store it
 - A6A3500B will cause the LAN adapter to deactivate and then reactivate
 - This is the same as doing a PF17 on the screen showing the LAN adapter's network data
 - A6DD500B will dump all Operations Console related flight recorders to vlogs (except D-mode where vlog support isn't present)
 - The vlogs will be 4A00 major code



iSeries Operations Console

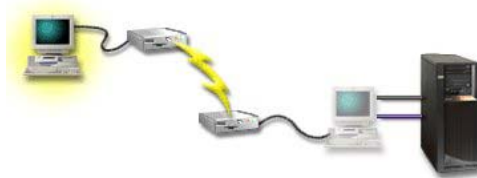
- Console takeover and recovery
 - Recovery of console takes about 75 seconds
 - PC auto resynchronizes the device ID
 - In V5R3 you will get a specific error message indicating the need to reset the device ID password. Only then should you perform a reset.
 - 7-65s will reset the host device ID QCONSOLE





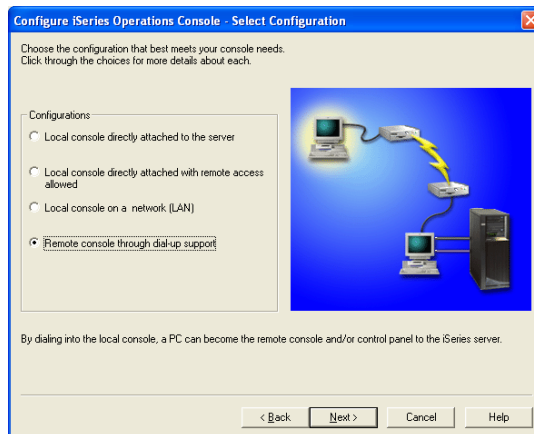
iSeries Operations Console

- Remote Controlling System



iSeries Operations Console

- Remote Controlling System





iSeries Operations Console

- Remote Controlling System

Configure iSeries Operations Console - iSeries and Local Console Name

What is the connection name of the iSeries server you want to connect?
DIRECT

What is the computer name of the local console you will use to connect to this iSeries server?
PC name of DIRECT attached

Note: The local console is also known as the local controlling system.

< Back Next > Cancel Help

© 2004 IBM Corporation

IBM CONFIDENTIAL UNTIL ANNOUNCED

iSeries. mySeries.



iSeries Operations Console

- Remote Controlling System

Network Connection Wizard

Network Connection Type

You can choose the type of network connection you want to create, based on your network configuration and your networking needs.

Dial-up to private network
Connect using my phone line (modem or ISDN).

Dial-up to the Internet
Connect to the Internet using my phone line (modem or ISDN).

Connect to a private network through the Internet
Create a Virtual Private Network (VPN) connection or 'tunnel' through the Internet.

Accept incoming connections
Let other computers connect to mine by phone line, the Internet, or direct cable.

Connect directly to another computer
Connect using my serial, parallel, or infrared port.

< Back Next > Cancel

© 2004 IBM Corporation

IBM CONFIDENTIAL UNTIL ANNOUNCED

iSeries. mySeries.




iSeries Operations Console

- Remote Controlling System
 - Remote Controlling System to Local Controlling System (RCS to LCS)
 - IBM Desktop on Call
 - Remotely Possible
 - Virtual Network Computing (VNC)
 - PC Anywhere
 - Search Google/Directory with any of the names above to find great information



iSeries Operations Console

- Windows XP
 - The following error message is received when limited authority is detected to access the XP key container file.

 - Whomever creates the first Operations Console configuration on an XP machine will be the only user with authority to connect a console. This is because XP's security limits access to the key container file. This is true for administrators as well.
 - The key container file is used to encrypt the access and service tools device passwords.
 - CWBOPSEC executed in a DOS Window with no parameters displays help.
 - Use CWBOPSEC /adminkey to set only administrator authority or CWBOPSEC /allkey to set all authority.
- Windows 2000
 - In our testing we found that Windows 2000 security also limits access to the key container file. CWBOPSEC can be used here as well to resolve this issue.



iSeries Operations Console

- Operations Console quick overview
- Configuring console is easier
- New property page features
- Remote Control Panel
- Console takeover and recovery demo
- Remote Controlling System
- Questions?



iSeries Operations Console Intermediate Configuration

- Evaluation
 - Session ID: 409033
 - Session title: iSeries Operations Console Intermediate Configuration
 - Agenda key: 44CJ
 - Speaker: Marvin Levi

Thank you for attending!



iSeries Operations Console Intermediate Configuration

- Trademarks The following terms are trademarks of International Business Machines Corporation in the United States, or other countries, or both:
 - Application System/400
 - AS/400
 - AS/400e
 - Client Access
 - iSeries Access for Windows
 - IBM
 - iSeries
 - Operating System/400
 - OS/400
 - 400
- Microsoft, Windows, Windows NT, Windows 2000, Windows Me, Windows 98, Windows XP, and the Windows logo are trademarks of Microsoft Corporation in the United States, other countries, or both.
- Pentium and Intel are trademarks of Intel Corporation in the United States, other countries, or both.
- Other company, product, and service names may be the trademarks or service marks of others.



iSeries Operations Console Intermediate Configuration

Evaluation

- Session: 409033
- Agenda Key: 44CJ
- Session Title: iSeries Operations Console
Intermediate Configuration
- Speaker: Marvin Levi



Trademarks and Disclaimers

© IBM Corporation 1994-2003. All rights reserved.
References in this document to IBM products or services do not imply that IBM intends to make them available in every country.

The following terms are trademarks or registered trademarks of International Business Machines Corporation in the United States, other countries, or both:
Instruction: Refer to the following URL: <http://w3.ibm.com/legal/ipl/wlts>. Edit the list below, IBM subsidiary statement, and special attribution companies which follow so they coincide with your presentation.

AS/400	IBM
AS/400e	IBM (logo)
@Server	iSeries
@SERVER	OS/400

Lotus and SmartSuite are trademarks of Lotus Development Corporation and/or IBM Corporation in the United States, other countries, or both.
Instruction: For a complete list of Lotus/IBM trademarks, see www.lotus.com/lotus/information.nsf/firstpages/copyright and edit the above statements to coincide with your presentation.

MMX, Pentium, and ProShare are trademarks or registered trademarks of Intel Corporation in the United States, other countries, or both.
Microsoft and Windows NT are registered trademarks of Microsoft Corporation in the United States, other countries, or both.
Java and all Java-based trademarks are trademarks of Sun Microsystems, Inc. in the United States, other countries, or both.
SET and the SET Logo are trademarks owned by SET Secure Electronic Transaction LLC.
C-bus is a trademark of Corollary, Inc. in the United States, other countries, or both.
UNIX is a registered trademark of The Open Group in the United States and other countries.
Other company, product or service names may be trademarks or service marks of others.

Information is provided "AS IS" without warranty of any kind.

All customer examples described are presented as illustrations of how those customers have used IBM products and the results they may have achieved. Actual environmental costs and performance characteristics may vary by customer.

Information in this presentation concerning non-IBM products was obtained from a supplier of these products, published announcement material, or other publicly available sources and does not constitute an endorsement of such products by IBM. Sources for non-IBM list prices and performance numbers are taken from publicly available information, including vendor announcements and vendor worldwide homepages. IBM has not tested these products and cannot confirm the accuracy of performance, capability, or any other claims related to non-IBM products. Questions on the capability of non-IBM products should be addressed to the supplier of those products.

All statements regarding IBM future direction and intent are subject to change or withdrawal without notice, and represent goals and objectives only. Contact your local IBM office or IBM authorized reseller for the full text of the specific Statement of Direction.

Some information in this presentation addresses anticipated future capabilities. Such information is not intended as a definitive statement of a commitment to specific levels of performance, function or delivery schedules with respect to any future products. Such commitments are only made in IBM product announcements. The information is presented here to communicate IBM's current investment and development activities as a good faith effort to help with our customers' future planning.

Performance is based on measurements and projections using standard IBM benchmarks in a controlled environment. The actual throughput or performance that any user will experience will vary depending upon considerations such as the amount of multiprogramming in the user's job stream, the I/O configuration, the storage configuration, and the workload processed. Therefore, no assurance can be given that an individual user will achieve throughput or performance improvements equivalent to the ratios stated here.

Photographs shown are of engineering prototypes. Changes may be incorporated in production models.