



Session: 410068

iSeries. mySeries.

iSeries Access for Web and HATS LE Setup and Configuration

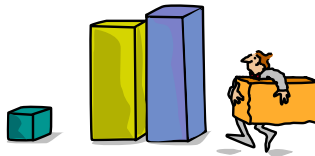
Doug Beauchene

IBM Rochester

dougbeau@us.ibm.com

© Copyright IBM Corporation, 2004. All Rights Reserved.
This publication may refer to products that are not currently
available in your country. IBM makes no commitment to make
available any products referred to herein.

iSeries. mySeries.



Ordering & Packaging





© 2004 IBM Corporation

iSeries. mySeries.



iSeries Access Family - Packaging

 V5R3 5722-XW1 iSeries Access Family	 V5R2 5722-XW1 iSeries Access Family
<ul style="list-style-type: none"> iSeries Access for Windows, 5722-XE1, V5R3 iSeries Access for Web, 5722-XH2, V5R3 	<ul style="list-style-type: none"> iSeries Access for Windows, 5722-XE1, V5R2 iSeries Access for Web, 5722-XH2, V5R2
<ul style="list-style-type: none"> HATS Limited Edition V5.0, 5724-F97-01 	<ul style="list-style-type: none"> WebSphere Host Publisher, 5724-B81, V4.0, 5724-B81, V4.01 HATS Limited Edition V4.0 5724-D34-01 (after 6/30/2003)
<ul style="list-style-type: none"> iSeries Access for Linux, 5722-XL1, V5R3 	<p>V5R2 customers not wanting to upgrade to i5/OS V5R3 but want the new V5R3 iSeries Access Family clients can order no-charge Feature No. 2647 of Product No. 5722-XW1</p>



- OS/400 V5R1
- EOM was 12/2003
- ~~EOS was 5/31/2004~~
- EOS now 9/30/2005

© 2004 IBM Corporation

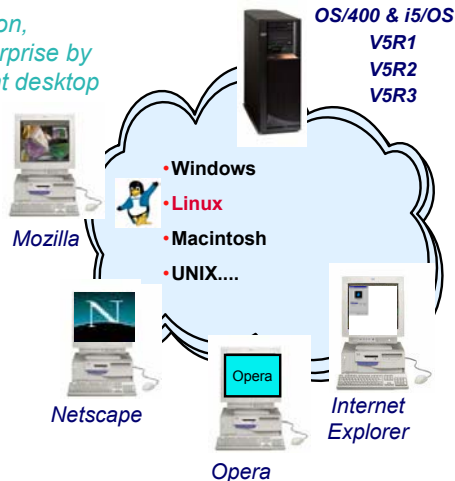
iSeries. mySeries.



What is iSeries Access for Web?

End users can leverage business information, applications, and resources across an enterprise by extending the iSeries resources to the client desktop through a web browser

- Provides access to iSeries through a browser
 - 5250 access
 - Access to database, integrated file system, printers, output queues, jobs
 - Can run batch commands and send/receive messages
- It has the following advantages:
 - Is server based
 - Requires only a browser on the client, no configuration required at desktop, no applets installed on desktop
 - Uses industry standard protocols - HTTP, HTTPS and HTML



© 2004 IBM Corporation

iSeries. mySeries.



Client Browser Requirements

- These browsers have been tested with **V5R3** iSeries Access for Web:
 - Netscape 4.7 (AIX)
 - Netscape 7.0 (Windows, Linux)
 - Internet Explorer 6.0 with Service Pack 1 (Windows)
 - Opera 7.11 (Windows, Linux)
 - Mozilla 1.3 and 1.4 (Windows, Linux)
 - Other browsers that support the current HTTP and HTML specifications should work, but have not been tested with iSeries Access for Web.
- These browsers have been tested with **V5R2** iSeries Access for Web:
 - Netscape 4.7 (AIX, Linux)
 - Netscape 6.2 (Windows)
 - Internet Explorer 6.0 (Windows)
 - Opera 6.0 (Windows)
 - Opera 5.0 (Linux)
 - Other browsers that support the current HTTP and HTML specifications should work, but have not been tested with iSeries Access for Web.
- **Set browser to allow 'Cookies'**
 - **iSeries Access for Web requires that the web browser allow cookies. Set the cookie configuration option to allow cookies.**

© 2004 IBM Corporation

iSeries. mySeries.



HATS Limited Edition

Runs in a browser

- Delivers HTML to the desktop
- Only software needed on the client is a Web browser
- Uses browser SSL features

Works on all 5250 screens

- Stock Templates included so you can quickly personalize your web page to your company look and feel

Screens are converted on the fly, in real time

- Selection lists can be converted to hot links, buttons, drop-down menus, or option lists (radio buttons)
- PF keys are can be converted to buttons or hot links

No programming necessary

- Doesn't break if changes are made to 5250 application
- No need to access source code



A quick and easy way to put iSeries applications on the Web

© 2004 IBM Corporation

iSeries. mySeries.



Notes: What is HATS LE?

- Host Access Transformation Services (HATS) Limited Edition is a new member of the iSeries Access Family (as of June 30, 2003).
- HATS Limited Edition dynamically transforms 5250 screens with a point-and-click Web interface.
- Screens are converted on the fly and delivered as HTML to the end user's Web browser
- Highlights:
 - Dynamically transforms 5250 screens to HTML
 - Does not require access to source code
 - Rejuvenates legacy applications with a Web-like look and feel
 - No requirement for programming skills
 - Provides stock HTML templates that can be tailored: for example, change the company name and logo in the template
 - Integrates with WebSphere Application Server
- HATS V5.0 Limited Edition
 - WebSphere Application Server V5.0.2 - Express for iSeries
 - WebSphere Application Server V5.0.2 for iSeries
 - WebSphere Application Server Network Deployment V5.0.2 for iSeries
 - WebSphere Application Server V5.1 - Express for iSeries
 - WebSphere Application Server V5.1 for iSeries
 - WebSphere Application Server Network Deployment V5.1 for iSeries

© 2004 IBM Corporation

iSeries. mySeries.



Notes: What is HATS LE? (continued)

- HATS V4.0 Limited Edition
 - WebSphere Application Server V5 - Express for iSeries
 - WebSphere Application Server V5 for iSeries
 - WebSphere Application Server Network Deployment V5 for iSeries
 - WebSphere Application Server Advanced Edition for iSeries V4.0
 - WebSphere Application Server Advanced Single Server Edition for iSeries V4.0

© 2004 IBM Corporation

iSeries. mySeries.

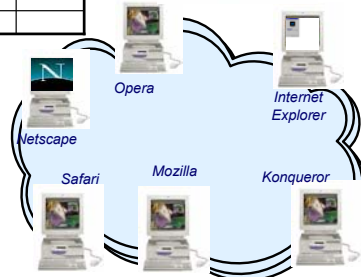


HATS LE V5.0 - Client Requirements

Any desktop operating system with the following browsers:

Browser	Windows	Solaris	Linux	Macintosh	AIX
Internet Explorer 5.2.3+				✓	
Internet Explorer 5.5+	✓				
Netscape 6.2+	✓				
Netscape 7.0+	✓	✓		✓	✓
Mozilla 1.2.1	✓	✓	✓	✓	✓
Opera 5.0+	✓		✓	✓	
Konqueror 3.1+			✓		
Safari 1.0+				✓	

OS/400 & i5/OS
V5R1
V5R2
V5R3



© 2004 IBM Corporation

iSeries. mySeries.

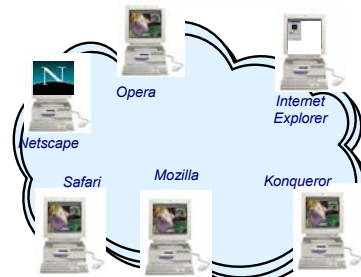


HATS LE V4.0 - Client Requirements

Supported browsers include...

- Microsoft Internet Explorer V5.0+
- Netscape Navigator V6.2+
- Netscape Navigator 4.72+

OS/400 & i5/OS
V5R1
V5R2
V5R3



© 2004 IBM Corporation

iSeries. mySeries.



iSeries server Software Requirements



Product Number	Product Name	Option	\$
5722-SSI	OS/400 V5R1, V5R2, or i5/OS V5R3	Base	w/HW
5722-SSI	OS/400 - Extended Base Directory Support	3	N/C
5722-SSI	OS/400 - AFP Compatibility Fonts	8	N/C
5722-SSI	OS/400 - Host Servers	12	N/C
5722-SSI	Operating System/400 Qshell Interpreter	30	N/C
5722-SSI	<ul style="list-style-type: none"> If you plan to use Secure Sockets Layer (SSL): OS/400 Digital Certificate Manager Cryptographic Access Provider (128-bit) 	34	N/C
5722-AC3			N/C
5722-DGI	IBM HTTP Server for iSeries	Base	N/C
5722-JVI	Developer Kit for Java	Base	N/C
	Developer Kit for Java Version 1.2	3	N/C
	Developer Kit for Java Version 1.3	5	N/C
	Developer Kit for Java Version 1.4	6	N/C
	(Check WebSphere doc for required version)		
5722-JCI	Toolbox for Java	Base	N/C
5722-TCI	TCP/IP Connectivity Utilities for iSeries	Base	N/C

© 2004 IBM Corporation

iSeries. mySeries.



iSeries server Software Requirements (continued)

Product Number	Product Name	Option	\$
5722-XW1	iSeries Access Family	Base	\$
5722-XH2	iSeries Access for Web <ul style="list-style-type: none"> Ships with 5722-XW1 iSeries Access Family V5R2 iSeries Access for Web runs on OS/400 V5R1 and V5R2 V5R3 iSeries Access for Web runs on OS/400 V5R2 and i5/OS V5R3 	Base	part of XW1
5722-IP1	IBM Info Print Server (optional -- enables best PDF output)	Base	\$

© 2004 IBM Corporation

iSeries. mySeries.



iSeries server Software Requirements (continued)

Product Number	Product Name	Option	\$
5722-E51	<u>One, or more, of the following web servers</u>		
5733-W51	• WebSphere Application Server V5.1 - Express for iSeries	See documentation	\$
5722-IWE	• WebSphere Application Server V5.1 (Base and ND)		\$
5733-WS5	• WebSphere Application Server V5.0 - Express for iSeries		\$
5733-WA4	• WebSphere Application Server V5.0 (Base and ND)		\$
5733-WS4	• WebSphere Application Server V4.0 Advanced Edition		\$
5722-DG1	• WebSphere Application Server V4.0 Advanced Single Server Edition		N/C
	• Apache Software Foundation Tomcat		\$
*	• WebSphere Portal for iSeries (Express and Express Plus)		

- Refer to the documentation for the individual web servers for additional software requirements that may not be listed above.

- WebSphere <http://www.ibm.com/servers/eserver/series/software/websphere/wsappserver/>
- ASF Tomcat <http://www.ibm.com/servers/eserver/series/software/http/>
- Refer to WebSphere Portal documentation for additional software requirements not listed above at <http://publib.boulder.ibm.com/pvc/wp/502/smbi/en/InfoCenter/index.html>

© 2004 IBM Corporation

iSeries. mySeries.



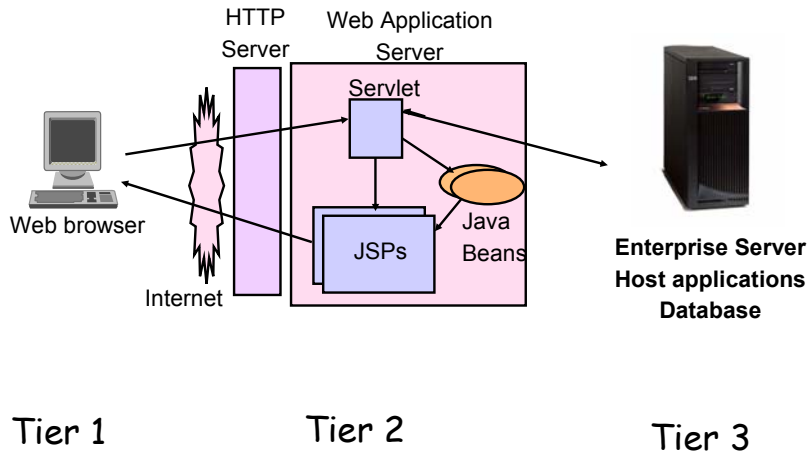
The formula for a successful setup and configuration experience!

- You need to do the following in this order:
 1. **Decide what web application server environment to run within.**
 2. **Install iSeries Access for Web on your server**
 3. **Verify, load, apply any additional PTFs you may need**
 - Cumulative PTF package
 - WebSphere, ASF Tomcat, HTTP Server for iSeries
 - iSeries Access for Web
 4. **Setting up web-serving environment.**
 5. **Configure and Start iSeries Access for Web.**
 6. **Install HATS LE on your server.**
 7. **Verify the installation and configuration**
- These steps are detailed in SC41-5518-01 iSeries Access for Web - Installation and Usage guide
 - Available in HTML and PDF at: <http://www.ibm.com/servers/eserver/series/access/web/>
 - Example documents are also available
 - In V5R3 Install/Usage guide and example documentation are tied together

© 2004 IBM Corporation

iSeries. mySeries.

First you need a web-serving environment



Pieces of the web-serving environment

- HTTP Server (powered by Apache)
 - Front door for your server into your web serving environment
 - HTTP/HTTPS (SSL)
 - Listens for web requests on a specific TCP/IP port
 - Routes web requests between and end-user browser and a web application sever
- Web application server
 - WebSphere Application Server and/or ASF Tomcat
 - Provides a java virtual machine environment where web applications run
- Web application
 - iSeries Access for Web, HATS LE
 - Provides specific function that users access using a web browser
 - Deployed/installed within a web application server
- WebSphere Portal
 - Web application deployed to WebSphere Application Server
 - Provide environment in which portlets are deployed and run.



Determining what web application server environment to use



*Apache Software Foundation
Jakarta Tomcat*

© 2004 IBM Corporation

iSeries. mySeries.



WebSphere Application Server

IBM's strategic web application server is WebSphere Application Server.

IBM WebSphere Application Server for IBM iSeries is an e-business application deployment environment built on open standards-based technology. It is the cornerstone of WebSphere application offerings and services.

Customers who require a robust and scalable web application server will select WebSphere Application Server.

For more information refer to
<http://www.ibm.com/servers/eserver/iseries/software/websphere/wsappserver/>

The available versions of WebSphere Application Server include

- WebSphere Application Server v5.1 - Express for iSeries (5722-E51)
- WebSphere Application Server v5.1 for iSeries ("Base Edition") (5733-W51)
- WebSphere Application Server v5.0 - Express for iSeries (5722-IWE)
- WebSphere Application Server v5.0 for iSeries ("Base Edition") (5733-W55)
- WebSphere Application Server Network Deployment v5.0/5.1 for iSeries ("Network Deployment Edition")
 - WebSphere Base Edition must be installed
 - iSeries Access for Web does not support WebSphere instances that are federated to the WebSphere ND environment.
- WebSphere Application Server v4.0 Advanced Single Server Edition (5733-WS4)
- WebSphere Application Server v4.0 Advanced Edition (5733-WA4)

© 2004 IBM Corporation

iSeries. mySeries.



Apache Software Foundation (ASF) Jakarta Tomcat

Included with the IBM HTTP Server (Powered by Apache) for iSeries (5722-DG1)

ASF Jakarta Tomcat provides basic web application server capability for iSeries customers.

- ASF Jakarta Tomcat provides a way to "get started" with Java server-side components and web application serving.
- ASF Jakarta Tomcat provides a basic web application server that supports Servlets and JavaServer Pages.

ASF Jakarta Tomcat provides less function and capabilities compared to IBM's WebSphere Application Server. For example Jakarta Tomcat:

- Does not support Enterprise JavaBeans
- It is not J2EE compliant
- It doesn't provide Domino integration

For more information refer to

<http://www.ibm.com/servers/eserver/iseries/software/http/services/tomcat.html>

The IBM HTTP Server includes an industry standard Java Servlet and JavaServer Pages engine.

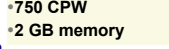

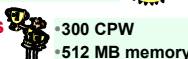
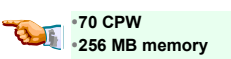
This engine is based on technology from the **Apache Software Foundation's Jakarta Tomcat** project.

- Included in 5722-DG1 for V5R3 and V5R2
- Provided as PTFs to 5722-DG1 for V5R1



Web application server options

- There are several Web applications servers that can run be used with iSeries Access for Web:

- **WebSphere Portal - Express for Multiplatforms V5.0.2** 
- **WebSphere Portal - Express Plus for Multiplatforms V5.0.2**
- **WebSphere Application Server -- Express V5.1** 
- **Also WAS Version 5.1 Base and Network Deployment** 
- **WebSphere Application Server Version 5.0 Express for iSeries** 
- **Also WAS Version 5.0 Base and Network Deployment**
- **WebSphere Application Server Advanced Edition Single Server V4**
- **WebSphere Application Server Advanced Edition V4** 
- **ASF Tomcat (included in IBM HTTP Server for iSeries)**
 - The ASF Tomcat web application server is part of the no-charge IBM HTTP Server for iSeries (5722-DG1)
 - ASF Tomcat PTFs are delivered within the IBM HTTP Server for iSeries Group HTTP PTFs.



Performance...???

- Does running Access for Web or HATS LE affect server performance?
 - Products like Access for Web and HATS LE don't put much strain on the system...
- How does the web application server affect performance?
 - If you have an older, under-powered iSeries, then performance may not be good...if you have a newer, bigger iSeries, then performance won't be an issue (unless you already are running your system at maximum capacity).
 - Use the **IBM eServer Workload Estimator** to see what performance will be if WAS is added to your system at: <http://www-912.ibm.com/wle/EstimatorServlet>
 - There is also a Workload Estimator for **WebFacing** Workloads. Access for Web will be similar (depending on what functions of Access for Web are being used).
- Fine-tuning your web application server
 - If you are running WebSphere Application Server, refer to Chapter 3 of the Buying and Selling Guide for WAS. It has many good tips for getting WAS to perform optimally.
 - Go to the iSeries WebSphere web page at <http://www.ibm.com/servers/eserver/iseries/software/websphere/index2.html>

© 2004 IBM Corporation

iSeries. mySeries.



<http://www-912.ibm.com/wle/EstimatorServlet>

IBM eServer Workload Estimator - Microsoft Internet Explorer

Address: <http://www-912.ibm.com/wle/EstimatorServlet>

Search for: hitachi rochester mn

Home | Products & services | Support & downloads | My account

IBM eServer Workload Estimator

Version: 2004.2 fix.1
21-May-04
www-912

Basic Workload Selection

Add Workloads to This Solution: (help)

Solution: [MySolution](#)

Add:

- [Domino Workload](#)
- [Existing Workload](#)
- [File Serving \(Linux\) Workload](#)
- [Generic Workload](#)
- [HATS Workload](#)
- [Network Infrastructure \(Linux\) Workload](#)
- [Linux DB2 UDB Workload](#)
- [Traditional Workload](#)
- [Web Serving Workload](#)
- [Web Serving \(Linux\) Workload](#)
- [WebFacing Workload](#)
- [WebSphere Workload](#)
- [WebSphere \(Linux\) Workload](#)
- [WebSphere Commerce Workload](#)
- [WebSphere Portal Server Workload](#)

© 2004 IBM Corporation

iSeries. mySeries.



iSeries server Hardware Requirements

- Server models/Processor features/Memory
 - Refer to the web application server documentation to determine what server models, processor features, and the memory requirements are for your web application server
 - WebSphere
 - <http://www.ibm.com/servers/eserver/iseries/software/websphere/wsappserver/>
 - ASF Tomcat
 - <http://www.ibm.com/servers/eserver/iseries/software/http/>
 - WebSphere Portal
 - <http://publib.boulder.ibm.com/pvc/wp/502/smbi/en/InfoCenter/index.html>
 - Server disk space
 - 200MB
 - 130MB
- | Software product |
|------------------------|
| iSeries Access for Web |
| HATS LE |



Step 2

- You need to do the following in this order:
 1. Decide what web application server environment to run within.
 2. **Install iSeries Access for Web on your server**
 3. Verify, load, apply any additional PTFs you may need
 - Cumulative PTF package
 - WebSphere, ASF Tomcat, HTTP Server for iSeries
 - iSeries Access for Web
 4. Setting up web-serving environment.
 5. Configure and Start iSeries Access for Web.
 6. Install HATS LE on your server.
 7. Verify the installation and configuration



@server®

Install iSeries Access for Web on your server



© 2004 IBM Corporation

iSeries. mySeries.



@server®

Installing either V5R2 or V5R3 iSeries Access for Web

- Use the RSTLICPGM command to restore 5722-XH2 to the server using the distribution media (i.e. CD-ROM).
 - RSTLICPGM LICPGM(5722XH2)
DEV(OPT01) OPTION(*BASE)
- The restore will...
 - Create library QIWA2 and objects in QIWA2
 - Create IFS directories
 - /QIBM/ProdData/Access/Web2/...
 - /QIBM/UserData/Access/Web2/...
 - Set basic authorities to IFS objects

The restore will not...

- Make any changes to HTTP server configurations.
- Make any changes to web application server configurations.
- Alter/change the V5R1 iSeries Access for Web installation/configuration if you have this on your iSeries server

© 2004 IBM Corporation

iSeries. mySeries.



V5R3 iSeries Access for Web

- On January 30, 2004, V5R3 iSeries Access for Web was made available as a web download.
 - Includes first PTF SI10723
- **No coexistence between V5R2 and V5R3 iSeries Access for Web**
 - If V5R2 iSeries Access for Web is installed on the server, installing V5R3 will replace the V5R2 version.
 - Will need to run CFGACCWEB2 after installing V5R3 iSeries Access for Web to enable new function

Use the README information as the starting point to install/setup V5R3 iSeries Access for Web

The Readme will tell you...

- How to handle the download files
- When to use other existing documentation to set up the web environment
- Additional detail not found in other documentation

The README information is at
<http://www.ibm.com/servers/eserver/iseries/access/web/v5r3readme.html>

© 2004 IBM Corporation

iSeries. mySeries.

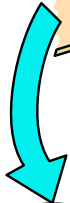
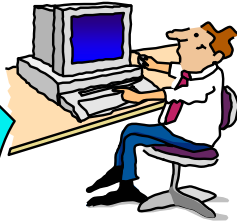


Step 3

- You need to do the following in this order:
 1. Decide what web application server environment to run within.
 2. Install iSeries Access for Web on your server
 3. **Verify, load, apply any additional PTFs you may need**
 - Cumulative PTF package
 - WebSphere, ASF Tomcat, HTTP Server for iSeries
 - iSeries Access for Web
 4. Setting up web-serving environment.
 5. Configure and Start iSeries Access for Web.
 6. Install HATS LE on your server.
 7. Verify the installation and configuration

© 2004 IBM Corporation

iSeries. mySeries.



Get the latest PTFs



© 2004 IBM Corporation

iSeries. mySeries.



WebSphere Application Server PTFs

<http://www.ibm.com/servers/eserver/iseries/software/websphere/wsappserver/>

- Click the PTFs link, click the link for server release/WebSphere version

Latest server Cumulative PTF package

- The WebSphere group PTFs identify what level of OS/400 or i5/OS cumulative PTF package is required.

Verify your server has the latest available PTFs

- Each web application server version has a group PTF.
- The group PTFs include PTFs for Websphere as well as other group PTFs (database, HTTP server, Java, etc.).

• V5R3 servers

- WRKPTFGRP SF99275
- WRKPTFGRP SF99285
- WRKPTFGRP SF99286
- WRKPTFGRP SF99272
- WRKPTFGRP SF99287
- WRKPTFGRP SF99288
- WRKPTFGRP SF99289
- WRKPTFGRP SF99290

- v5.1 Express for iSeries
- v5.1 Base Edition
- v5.1 Network Deployment Edition
- v5.0 Express for iSeries
- v5.0 Base Edition
- v5.0 Network Deployment Edition
- v4.0 Advanced Edition
- v4.0 Advanced Single Server Edition

• V5R2 servers

- WRKPTFGRP SF99274
- WRKPTFGRP SF99277
- WRKPTFGRP SF99279
- WRKPTFGRP SF99271
- WRKPTFGRP SF99245
- WRKPTFGRP SF99246
- WRKPTFGRP SF99148
- WRKPTFGRP SF99149

- v5.1 Express for iSeries
- v5.1 Base Edition
- v5.1 Network Deployment Edition
- v5.0 Express for iSeries
- v5.0 Base Edition
- v5.0 Network Deployment Edition
- v4.0 Advanced Edition
- v4.0 Advanced Single Server Edition

• V5R1 servers

- DSPDTAARA QASE51/SF99273
- DSPDTAARA QEJBAS51/SF99276
- DSPDTAARA QEJBAS51/SF99278
- DSPDTAARA QIWE/SF99270
- DSPDTAARA QEJBAS5/SF99243
- DSPDTAARA QEJBASND5/SF99244
- DSPDTAARA QEJBADV4/SF99241
- DSPDTAARA QEJBAES4/SF99242

- v5.1 Express for iSeries
- v5.1 Base Edition
- v5.1 Network Deployment Edition
- v5.0 Express for iSeries
- v5.0 Base Edition
- v5.0 Network Deployment Edition
- v4.0 Advanced Edition
- v4.0 Advanced Single Server Edition

© 2004 IBM Corporation

iSeries. mySeries.



Server and HTTP/Tomcat - PTFs

- Latest Server Cumulative PTF package
 - The WebSphere group PTFs identify what level of OS/400 or i5/OS package is required

- HTTP Server/ASF Tomcat server
 - <http://www.ibm.com/servers/eserver/series/software/http>
 - Click the PTFs and Support link, click the link for the server release/version
 - V5R3 servers
 - WRKPTFGRP SF99099
 - V5R2 servers
 - WRKPTFGRP SF99098
 - V5R1 servers
 - DSPDTAARA QHTTSPVR/SF99156



Access for Web, HATS LE - PTFs

- iSeries Access for Web
 - <http://www.ibm.com/servers/eserver/series/access/web/servicepacks.htm>
 - V5R3
 - SI14324
 - Linux i386 rpm - SI14909
 - Linux ppc rpm - SI14910
 - AFP Plugin Viewer - SI14371
 - V5R2
 - SI11883
 - **Always have to check the cover letter special instructions, often will have to run CFGACCWEB2 to enable changes.**

- HATS LE
 - <http://www.ibm.com/servers/eserver/series/access/hatsle/fixes.html>
 - Follow the appropriate link(s)
 - Select the "Host Access Transformation Services Limited Edition shipped in iSeries Access Family" V4.0 or V5.0.

Step 4

- You need to do the following in this order:
 1. Decide what web application server environment to run within.
 2. Install iSeries Access for Web on your server
 3. Verify, load, apply any additional PTFs you may need
 - Cumulative PTF package
 - WebSphere, ASF Tomcat, HTTP Server for iSeries
 - iSeries Access for Web
 4. **Setting up web-serving environment.**
 5. Configure and Start iSeries Access for Web.
 6. Install HATS LE on your server.
 7. Verify the installation and configuration



Setting up web-serving environment



 HTTP Server for iSeries



IBM
WebSphere





IBM Web Administration for iSeries

- STRTCPSVR *HTTP HTTPSVR(*ADMIN)
- http://<your_server_name>:2001

© 2004 IBM Corporation

iSeries. mySeries.

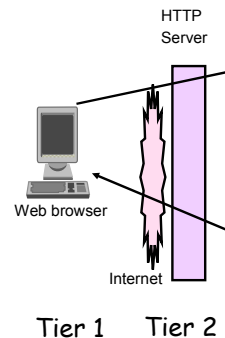


HTTP Server for iSeries

Pieces of the web-serving environment

- HTTP Server (powered by Apache)
 - Front door for your server into your web serving environment
 - HTTP/HTTPS (SSL)
 - Listens for web requests on a specific TCP/IP port
 - An HTTP server is configured to "talk" to a specific web application server
 - Routes web requests between and end-user browser and a web application sever

HTTP Server for iSeries



© 2004 IBM Corporation

iSeries. mySeries.

Use iSeries wizards to create HTTP Server

http://<your_server_name>:2001/HTTPAdmin



Information / Tips

- To start/stop the IBM Web Administration for iSeries interface
 - STRTCPSVR *HTTP HTTPSVR(*ADMIN)
 - ENDTCPSSVR *HTTP HTTPSVR(ADMIN)
- To access the IBM Web Administration for iSeries interface
 - http://<your_server_name>:2001
- CL commands to start/stop the HTTP servers
 - STRTCPSVR *HTTP HTTPSVR(<my_http_server_name>)
 - ENDTCPSSVR *HTTP HTTPSVR(<my_http_server_name>)
- HTTP servers run under the **QHTTPSVR** subsystem



WebSphere Application Server – General

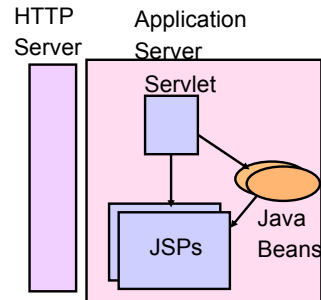
Pieces of the web-serving environment

WebSphere provides an environment that allows for the deployment and management of web based applications

- such as iSeries Access for Web

Many different WAS versions can be installed and coexist on an iSeries server simultaneously

- WebSphere coexistence does require that each WebSphere installation use a different set of ports.



Tier 2



© 2004 IBM Corporation

iSeries. mySeries.



WebSphere Application Server – Instances

A WAS instance provides an environment to deploy and manage web based applications

- such as iSeries Access for Web, HATS LE...
- A single WebSphere server instance/application server will handle most scalability and isolation needs.
- Each instance contains an application server
 - The application server provides the Java Virtual Machine where the web application runs.
- All web applications running within an application server share the same name space.

You could create multiple instances on a single iSeries server for the following reasons:

- To create separate development environments for different developers. This allows them to have different versions of the same objects in their own name space.
- To create separate development and test environments
- Additional instances/application servers can be created using the IBM Web Administration for iSeries interface

© 2004 IBM Corporation

iSeries. mySeries.



WAS Terminology



WAS Terminology	Description
Node	In the iSeries environment, node means machine. This can be a real iSeries machine with a single image or it can be a logical partition (LPAR).
Instance	This is a combination of one or more WAS servers and an administrative console that controls the configuration of its servers
Server	You may create one or many application servers within a single WAS instance. Each server has its own Java Virtual Machine (JVM) but shares a single common console interface. This is true in both the WAS Express and WAS Base versions.
Virtual Host	A virtual host is a logical entity that is used to map HTTP servers or the built-in HTTP Server to domain names, IP address and ports that are allowed to communicate with a specific application server. This facility is used to help ensure that requests received by a specific HTTP Server are only processed by specific application servers.
Application	At WAS V5, an application means all of your Java objects, properties files, and other resources bundled into an enterprise archive (EAR) or Web archive (WAR) file.
Cell	A cell is a logical configuration that groups multiple nodes that are administered via the Deployment Manager (WAS ND) from a single point. WAS Express and WAS Base contain a single default cell. The cell exists but is invisible to users.
Cluster	A cluster is similar to a cell but is a logical grouping that contains multiple application servers in a WAS ND configuration. WAS Express and WAS Base contain a single cluster that's invisible to the user.

© 2004 IBM Corporation

iSeries. mySeries.



WAS Express - Information/Tips

- V5.0
 - Runs in QASE5 subsystem
 - WRKACTJOB SBS(QASE5)
 - Job named the same as what you named your application server
 - IFS paths
 - /QIBM/ProdData/WebASE/ASE5/...
 - /QIBM/UserData/WebASE/ASE5/<instance_name>/...
- V5.1
 - Runs in QASE51 subsystem
 - WRKACTJOB SBS(QASE51)
 - Job named the same as what you named your application server
 - IFS paths
 - /QIBM/ProdData/WebASE51/ASE/...
 - /QIBM/UserData/WebASE51/ASE/<instance_name>/...

Instances

- A default instance **is not created**
- An instance **must be created**.
- Use the IBM Web Administration interface to manage the instances/application servers

© 2004 IBM Corporation

iSeries. mySeries.



WAS Base edition - Information/Tips

- V5.0
 - Runs in QEJBAS5 subsystem
 - WRKACTJOB SBS(QEJBAS5)
 - Job named the same as what you named your application server
 - IFS paths
 - /QIBM/ProdData/WebAS5/Base/...
 - /QIBM/UserData/WebAS5/Base/<instance_name>/...
- V5.1
 - Runs in QEJBAS51 subsystem
 - WRKACTJOB SBS(QEJBAS51)
 - Job named the same as what you named your application server
 - IFS paths
 - /QIBM/ProdData/WebAS51/Base/...
 - /QIBM/UserData/WebAS51/Base/<instance_name>/...
- If using WAS Network Deployment product, the instance cannot be federated/managed to the Network Deployment environment

Instances

- A default instance is created named "default".
- The application server it contains is named "server1".

© 2004 IBM Corporation

iSeries. mySeries.



First Install Customer Assistance

Get some help if you need it...

First Install Customer Assistance for Websphere Application Server Standard or Advanced Edition for iSeries or AS/400.

- We would like to welcome new customers to the Websphere arena and provide them with assistance that may be needed to install and configure Websphere Application Server, either Standard or Advanced Edition. By starting with a working instance of Websphere Application Server and reviewing the sample programs provided, your time spent with Websphere Application Server will be more productive and enjoyable. Through your application and acceptance into this program, the Rochester Support Center will provide you with 8:00AM - 5:00PM Central Standard Time phone support assistance in setting up a Websphere Application Server test environment.

This assistance includes:

1. Documentation clarification
2. Verify you have all Prerequisites available: Software, Hardware, PTF's, and Communication configurations
3. Creation of a default Websphere instance
4. Configuration and enablement of Websphere for an HTTP server
5. Installation and use of Websphere Client based Admin Console (excluded Firewall configuration)
6. Validate the above by running of a sample servlet.

<http://www.iseries.ibm.com/developer/websphere/assistance.html>

© 2004 IBM Corporation

iSeries. mySeries.



Notes: First Install Customer Assistance

If you are interested in applying for participating in our First Install Customer Assistance for Websphere Application Server please provide the following information:

- Company Name:
- Company Address:
- Company Phone Number:
- Name of technical contact:
- Number of technical contact:
- Technical contact email address:
- Technical contact fax number:

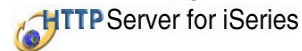
Return this completed letter to rchfca@us.ibm.com. A First Install Customer Assistance technical contact, will contact you when you have been accepted into the program.

Go to web page: <http://www.iseries.ibm.com/developer/websphere/assistance.html>



ASF Tomcat - General

Pieces of web-serving environment



- Use IBM Web Administration for iSeries to manage ASF Tomcat servers
 - To access the IBM Web Administration for iSeries interface
 - STRTCPSVR *HTTP HTTPSVR(*ADMIN)
 - http://<your_server_name>:2001
- CL commands to start/stop the ASF Tomcat servers (V5R2 and later)
 - STRTCPSVR *ASF TOMCAT TOMCATSVR(<my_tomcat_server_name>)
 - ENDTCP SVR *ASF TOMCAT TOMCATSVR(<my_tomcat_server_name>)
- ASF Tomcat servers run under the **QSYSWRK subsystem**
 - WRKACTJOB SBS(QSYSWRK)
 - Look for a job named the same as what you named the Tomcat Server

ASF Tomcat is delivered as a part of the 5722-DG1 IBM HTTP Server product

A common configuration error is the use of ports

- One port is used by the HTTP server
- One port is used between the HTTP server and ASF Tomcat server
- Refer to the example documentation to see how each is specified

Step 5

- You need to do the following in this order:
 1. Decide what web application server environment to run within.
 2. Install iSeries Access for Web on your server
 3. Verify, load, apply any additional PTFs you may need
 - Cumulative PTF package
 - WebSphere, ASF Tomcat, HTTP Server for iSeries
 - iSeries Access for Web
 4. Setting up web-serving environment.
 5. **Configure and Start iSeries Access for Web.**
 6. Install HATS LE on your server.
 7. Verify the installation and configuration





Access for Web - Documentation

- Use the available documentation
 - Web download users need to start with the Readme
 - <http://www.ibm.com/servers/eserver/iseriess/access/web/v5r3readme.html>
 - iSeries Access for Web - Installation and Usage
 - <http://www.ibm.com/servers/eserver/iseriess/access/web/doc.html>
- Step by Step example documents
 - What/when to type, what/when to click
 - WAS 5.1
 - WAS 5.0
 - WebSphere Portal
 - ASF Tomcat
 - HTTP servers for them
 - <http://www.ibm.com/servers/eserver/iseriess/access/web/doc.html>



V5R3 Documentation

<http://www.ibm.com/eserver/iseriess/access/web/doc.html>

	V5R3 iSeries Access for Web - Installation and Usage	PDF
	Available in: Belgian Dutch, Chinese Simplified Chinese Traditional, Czech, Dutch, English, German, Hungarian, Italian, Japanese, Korean, Portuguese, Romanian, Spanish, Swiss Italian	
	V5R3 iSeries Access for Web with WebSphere Portal - Express for iSeries V5.0 - Setup/Configuration Example	PDF
	V5R3 iSeries Access for Web with WebSphere Application Server (WAS) - Express for iSeries V5.1 - Setup/Configuration Example	PDF
	V5R3 iSeries Access for Web with WAS - Express for iSeries V5.0 - Setup/Configuration Example	PDF
	V5R3 iSeries Access for Web with WAS V5.1 for iSeries (Base and Network Deployment Editions) - Setup/Configuration Example	PDF
	V5R3 iSeries Access for Web with WAS V5.0 for iSeries (Base and Network Deployment Editions) - Setup/Configuration Example	PDF
	V5R3 iSeries Access for Web with Apache Software Foundation (ASF) Tomcat - Setup/Configuration Example	PDF
	URL Interfaces to iSeries Access for Web	PDF



iSeries Access for Web - Commands

- **Commands are provided to deploy and manage iSeries Access for Web**

- **Ease the complexity of deploying a web application**
- **Check dependencies**
- **Invoke appropriate WebSphere tool to deploy an application**
- **Perform additional setup**
- **Setup /QIBM/UserData structure**
- **Allows us to provide PTFs that make use of the normal PTF tools on the iSeries**

V5R3 iSeries Access for Web

- CL Commands used for...
 - WAS 4.0
 - WAS 5.0
 - ASF Tomcat
- Script commands used for...
 - WAS 5.1
 - PTF SI14324

V5R2 iSeries Access for Web

- CL Commands used for...
 - WAS 4.0
 - ASF Tomcat
- Script commands used for...
 - WAS 5.0
 - WAS 5.1
 - PTF SI11883

iSeries Access for Web documentation provides detail for using the commands

<http://www.ibm.com/servers/eserver/iseries/access/web/doc.html>

© 2004 IBM Corporation

iSeries. mySeries.



iSeries Access for Web has 4 commands...



- **Configure** **CFGACCWEB2**
- **Start** **STRACCWEB2**
- **End** **ENDACCWEB2**
- **Remove** **RMVACCWEB2**

© 2004 IBM Corporation

iSeries. mySeries.



iSeries Access for Web Command locations

Command names and parameters are identical, they are just invoked differently.

CL commands found in library QIWA2

- CFGACCWEB2 - Configure iSeries Access for Web into the web application server
- STRACCWEB2 - Start the iSeries Access for Web configuration
- ENDACCWEB2 - End a running iSeries Access for Web configuration
- RMVACCWEB2 - Remove the iSeries Access for Web configuration



Do not use the web administration interface or WebSphere Admin. console to configure (deploy) or remove iSeries Access for Web.

Script commands found in IFS path /QIBM/ProdData/Access/Web2

- `cfgaccweb2` Configure iSeries Access for Web into the web application server
- `straccweb2` Start the iSeries Access for Web configuration
- `endaccweb2` End a running iSeries Access for Web configuration
- `rmvaccweb2` Remove the iSeries Access for Web configuration

The iSeries Access for Web commands must be used.

Script commands available in an iSeries Access for Web PTF



iSeries Access for Web - Configuring

Run the CFGACCWEB2 command to configure iSeries Access for Web

- Before iSeries Access for Web can be used, it must be configured using this command.
- This command uses input configuration parameters to add application server and servlet configuration information to the web application server.
- No updates are made to the HTTP server configuration.

WebSphere V5.0/5.1 - Express for iSeries specifics

- The QASE5 or QASE51 must be running before running `cfgaccweb2`
- The application server must be running before running `cfgaccweb2`
- The application server (or subsystem) will need to be restarted after `cfgaccweb2`
- Restart WAS after running CFGACCWEB2

ASF Tomcat specifics

- If the Tomcat server is running when CFGACCWEB2 is run, restart it to pick up the CFGACCWEB2 changes.
 - STRTCPSVR SERVER(*ASFTOMCAT)
TOMCATSVR(<tomcat_server_name>)
 - ENDTCPSVR SERVER(*ASFTOMCAT)
TOMCATSVR(<tomcat_server_name>)



iSeries Access for Web - Configuring

- WebSphere v5.0/5.1 (Base and ND) specifics
 - The QEJBAS5/QEJBAS51 subsystem must be running before running cfgaccweb2
 - For Network Deployment environment
 - WebSphere v5.0/5.1 Base edition must be installed
 - Websphere instance cannot be federated/managed to the Network Deployment environment
 - The application server must be running before running cfgaccweb2
 - The application server (or subsystem) will need to be restarted after cfgaccweb2
- WebSphere v4.0 Advanced Edition specifics
 - The QEJBADV4 subsystem must be running before running CFGACCWEB2
- WebSphere v4.0 Advanced Single Server Edition specifics
 - If the QEJBAES4 subsystem is running when CFGACCWEB2 is run, the subsystem must be restarted to pick up the changes CFGACCWEB2 makes.



iSeries Access for Web - Configuring Examples

- WebSphere V5.1 - Express for iSeries
 - This command configures iSeries Access for Web in an instance called "iwa51exp" that contains an application server called "iwa51exp"
 - QSH
 - cd /QIBM/ProdData/Access/Web2/install
 - cfgaccweb2 -appsvrtype *WAS51EXP -wasinst iwa51exp -appsvr iwa51exp
 - Note: The *WAS51EXP value is case sensitive
- ASF Tomcat
 - This command configures iSeries Access for Web for the TESTTC Tomcat server and inputs the path that the Tomcat server was installed to and the user ID it runs under.
 - QIWA2/CFGACCWEB2 APPSVRTYPE(*ASFTOMCAT) TCSVRNAME(TESTTC) TCHOMEDIR(/asftomcat/testtc) TCUSRPRF(QTMHHTTP)



iSeries Access for Web - Configuring Examples

- WebSphere V5.1 (Base and ND)
 - This command configures iSeries Access for Web in the default instance and application server
 - QSH
 - `cd /QIBM/ProdData/Access/Web2/install`
 - `cfgaccweb2 -appsvrtype *WAS51 -wasinst default -appsvr server1`
 - Note: The *WAS51 value is case sensitive

- WebSphere Portal V5
 - This command configures iSeries Access for Web to WebSphere Portal
 - QSH
 - `cd /QIBM/ProdData/Access/Web2/install`
 - `cfgaccweb2 -appsvrtype *WP50 -wasinst default -wppwd wpsadmin -wpurl<server_name>:<port>/wps/config -wppag *YES`
 - Note: The *WP50 value is case sensitive



iSeries Access for Web - Configuring Examples

- WebSphere V4.0 Advanced Edition
 - This command configures iSeries Access for Web for the default WebSphere administrative instance. The servlet engine uses port 5098.
 - `QIWA2/CFGACCWEB2 APPSVRTYPE(*WAS40ADV) PORT(5098) WASINST(*DEFAULT)`

- WebSphere V4.0 Advanced Single Server Edition
 - This command configures iSeries Access for Web for the default WebSphere administrative instance.
 - `QIWA2/CFGACCWEB2 APPSVRTYPE(*WAS40SNG) WASINST(*DEFAULT)`



iSeries Access for Web - Verify configuration

WebSphere V5.1 - Express for iSeries

http://<server_name>:2001/HTTPAdmin

Application name	Status	Enablement
ExpressSamples	Running	Enabled
adminconsole	Running	Enabled
iSeriesAccessforWeb	Stopped	Enabled

© 2004 IBM Corporation

iSeries. mySeries.



iSeries Access for Web - Verify configuration (continued)

ASF Tomcat configuration verification using WRKLNK command

wrklnk '/QIBM/ASFTomcat/testtc/webapps/webaccess/WEB_INF/lib'

```
WORK WITH OBJECT LINKS

DIRECTORY . . . . : /asftomcat/testtc/webapps/webaccess/WEB-INF/lib

TYPE OPTIONS, PRESS ENTER.
2=EDIT 3=COPY 4=REMOVE 5=DISPLAY 7=RENAME 8=DISPLAY ATTRIBUTES
11=CHANGE CURRENT DIRECTORY ...

OPT OBJECT LINK TYPE ATTRIBUTE TEXT
-- activation.jar STMF
-- habeanlv.jar STMF
-- itext.jar STMF
-- jt400.jar STMF
-- jt400Servlet.jar STMF
-- mail.jar STMF
-- regex4j.jar STMF
-- webaccess.jar STMF
-- xerces.jar STMF

PARAMETERS OR COMMAND
==>
F3=EXIT F4=PROMPT F5=REFRESH F9=RETRIEVE F12=CANCEL F17=POSITION TO
F22=DISPLAY ENTIRE FIELD F23=MORE OPTIONS

10/002
```

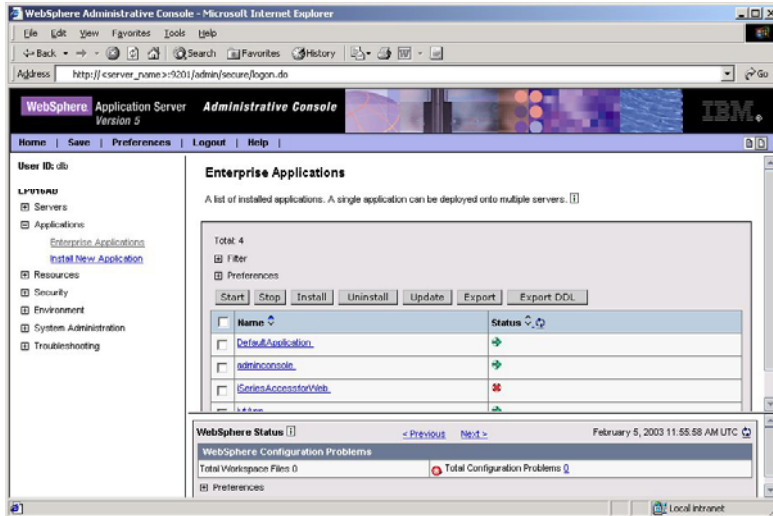
© 2004 IBM Corporation

iSeries. mySeries.



iSeries Access for Web - Verify configuration (continued)

WebSphere V5.1 - Base and Network Deployment



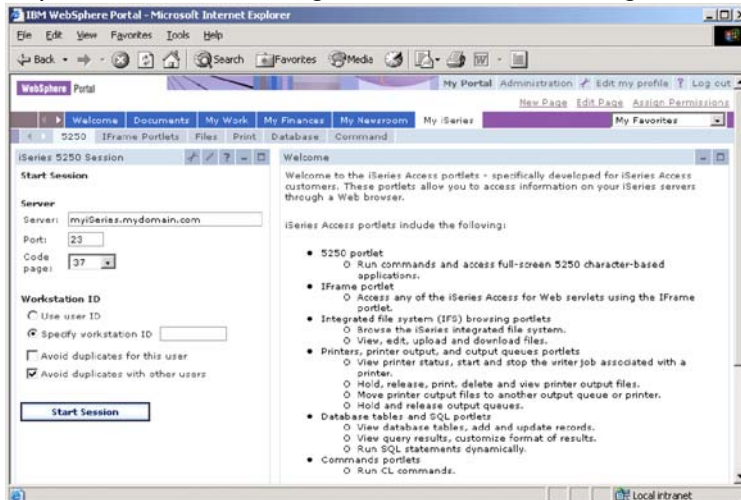
© 2004 IBM Corporation

iSeries. mySeries.



iSeries Access for Web - Verify configuration (continued)

WebSphere Portal V5 configuration verification using Portal



© 2004 IBM Corporation

iSeries. mySeries.



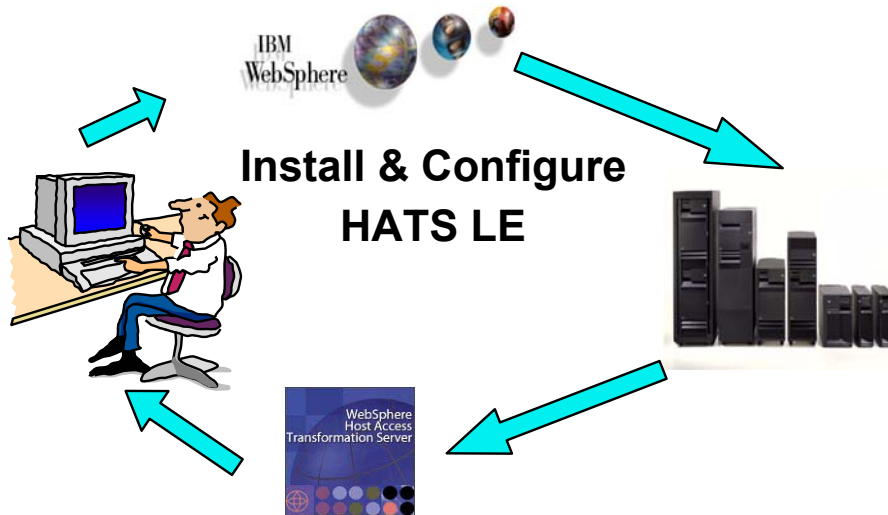
iSeries Access for Web - Other commands

- Other iSeries Access for Web commands
 - To start the iSeries Access for Web web application
 - QIWA2/STRACCWEB2
 - /QIBM/ProdData/Access/Web2/install/straccweb2 -appsvrtype -wasinst -appsvr
 - This action could also be done using the web admin. interface or WAS admin. console
 - To end or stop the running iSeries Access for Web web application
 - QIWA2/ENDACCWEB2
 - /QIBM/ProdData/Access/Web2/install/endaccweb2 -appsvrtype -wasinst -appsvr
 - This action could also be done using the web admin. interface or WAS admin. console
 - To remove the iSeries Access for Web configuration
 - QIWA2/RMVACCWEB2
 - /QIBM/ProdData/Access/Web2/install/rmvaccweb2 -appsvrtype -wasinst -appsvr



Step 6

- You need to do the following in this order:
 1. Decide what web application server environment to run within.
 2. Install iSeries Access for Web on your server
 3. Verify, load, apply any additional PTFs you may need
 - Cumulative PTF package
 - WebSphere, ASF Tomcat, HTTP Server for iSeries
 - iSeries Access for Web
 4. Setting up web-serving environment.
 5. Configure and Start iSeries Access for Web.
 6. **Install HATS LE on your server.**
 7. Verify the installation and configuration



© 2004 IBM Corporation

iSeries. mySeries.



HATS LE Requirements

HATS LE V5 supports the following Web application servers:

- WebSphere Application Server V5.1 - Express for iSeries
- WebSphere Application Server V5.1 for iSeries (Base and Network Deployment Editions)
- WebSphere Application Server V5.0.2 - Express for iSeries
- WebSphere Application Server V5.0.2 for iSeries (Base and Network Deployment Editions)

HATS LE V4 supports the following Web application servers:

- WebSphere Application Server V5 - Express for iSeries
- WebSphere Application Server V5 for iSeries (Base and Network Deployment Editions)
- WebSphere Application Server Advanced Edition for iSeries V4.0
- WebSphere Application Server Advanced Single Server Edition for iSeries V4.0

iSeries Access for Web has no dependency on HATS LE.

HATS LE does require 5722-XW1 iSeries Access Family to be installed on the server.

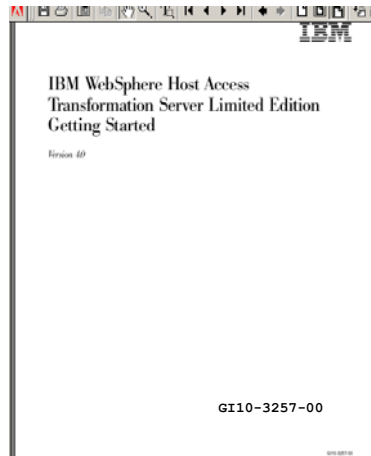
© 2004 IBM Corporation

iSeries. mySeries.



Find the CD and Print Documentation

- HATS LE is shipped on a separate CD called "WebSphere Host Access Transformation Services Limited Edition" (number SK3T-8162)
- The 'HATS LE Getting Started' documentation and README information is on the CD
 - These .PDFs are also on iSeries Access Family - HATS LE web page at www.ibm.com/eserver/iseries/access/hatsle



© 2004 IBM Corporation

iSeries. mySeries.



Installing and Starting HATS LE V5

1. Copy HATS LE ear file from your CD to WAS directory
 - You must move the HATS5LE.ear file from the HATS LE V5 CD into the InstallableApps directory of WebSphere Application Server.
 - For example, for WebSphere Application Server V5.0 Express for iSeries, you could copy HATS5LE.ear to QIBM/UserData/WebASE/ASE5/<instance>/InstallableApps, where <instance> is the name of the application server instance on which you are installing HATS LE.
2. Start the **WebSphere Administrative Console** in your browser.
 - In the left column, expand Applications and click **Install New Application**.
 - Browse the QIBM path above and find HATS5LE.ear
 - Continue clicking Next until you reach the Summary screen. Click Finish.
 - Click the link to Save to Master Configuration. Click Save.
3. You will return to the main page of the **WebSphere Administrative Console**.
 - In the left column, expand Applications and click **Enterprise Applications**.
 - In the right frame, click the check box next to HATS5LE.ear, and click Start.
 - In the left column, expand Environment, click on Update Web Server Plugin then Click OK.

Follow directions in the The 'HATS LE Getting Started' documentation and README information that is on the HATS LE V5 CD to get the .ear file installed under WAS.

© 2004 IBM Corporation

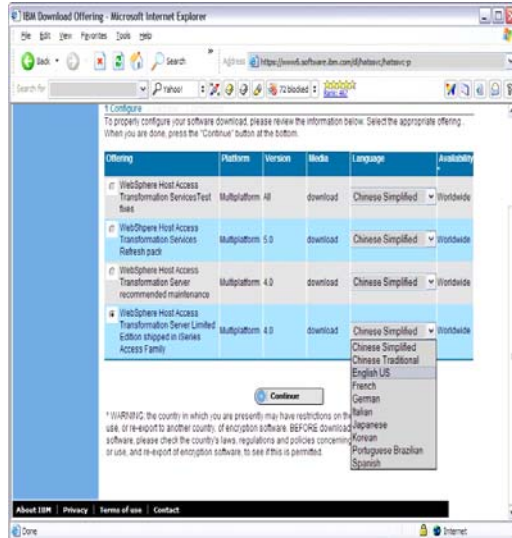
iSeries. mySeries.



Getting Fixes for current version

Check Web page to find out if there is a Fix Pack available for HATS LE

- Link is on iSeries Access HATS LE web page at <http://www.ibm.com/eserver/iseseries/access/hatsle>
 - Click on the link to HATS LE "Fix packs"
 - Follow the download page link.
- Or go Support web page at <http://www.ibm.com/support/>
 - Select 'Software'
 - then key in 'hats le fix pack'
 - then select the Host Access Transformation Server Limited Edition fix pack appropriate for the version you are using



© 2004 IBM Corporation

iSeries. mySeries.



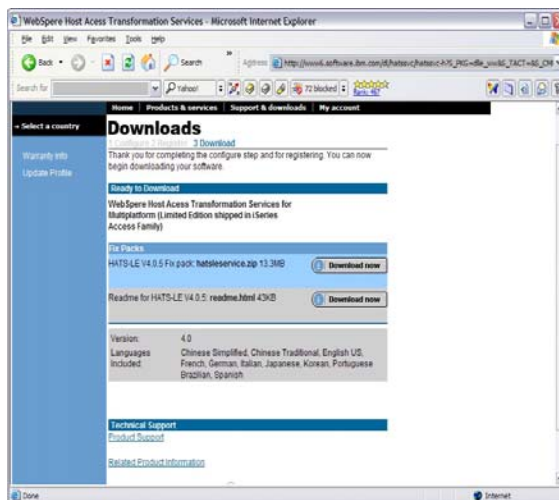
Download Fix Pack

Download latest Fix Pack for HATS LE

- Get the latest fix pack number as all the fixes are in the latest one

HATS LE fixes are not shipped with iSeries CUMTAPES

- Only available via this download method



© 2004 IBM Corporation

iSeries. mySeries.

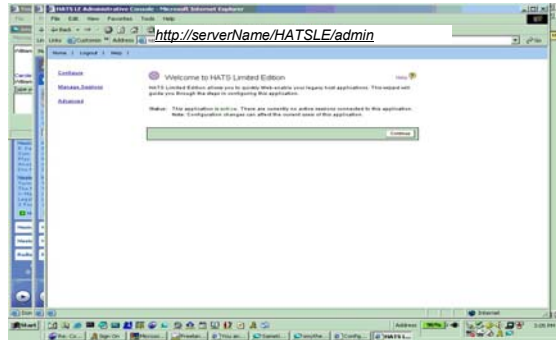
HATS LE - Configuration Wizard

Configuration Wizard

- A web-based tool to enable the administrator to configure HATS LE
- Navigate to URL `http://<server_name>/HATSLE/config`
- Requires SECADM authority

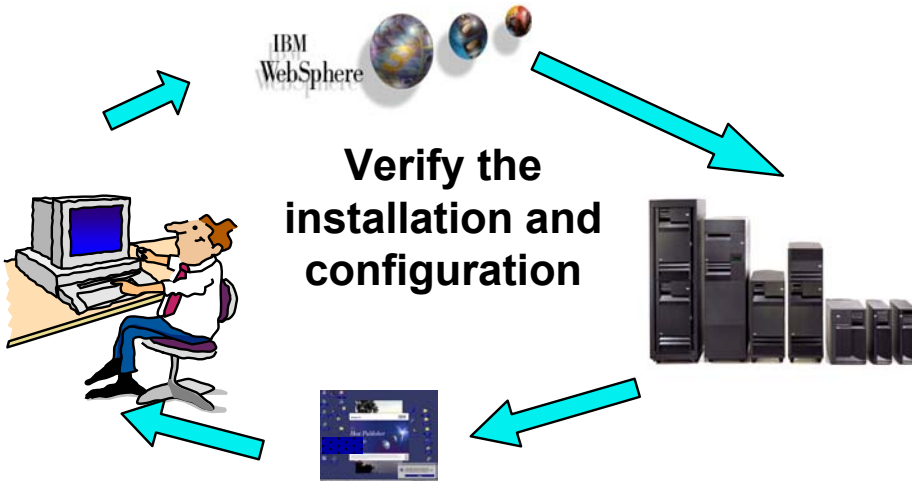
Steps that need to be performed are:

- Set up **connection settings**
- Define default **template to be used**
- Set up **default transformation settings**, such as:
 - Converting PF keys into buttons
 - AS/400 subfile support
 - Color remapping
 - Other minor enhancements



Step 7

- You need to do the following in this order:
 1. Decide what web application server environment to run within.
 2. Install iSeries Access for Web on your server
 3. Verify, load, apply any additional PTFs you may need
 - Cumulative PTF package
 - WebSphere, ASF Tomcat, HTTP Server for iSeries
 - iSeries Access for Web
 4. Setting up web-serving environment.
 5. Configure and Start iSeries Access for Web.
 6. Install HATS LE on your server.
 7. **Verify the installation and configuration**



© 2004 IBM Corporation

iSeries. mySeries.



Verify the installation and configuration

HTTP Server

- Take a look at the subsystem to verify several jobs are running with the name of your HTTP server
 - WRKACTJOB SBS(QHTTPSVR)

WebSphere Application Server

- Take a look at the subsystem to verify the applicaon server you set up is running
 - WRKACTJOB SBS(QASE5) V5.0 - WAS Express for iSeries
 - WRKACTJOB SBS(QASE51) V5.1 - WAS Express for iSeries
 - WRKACTJOB SBS(QEJBAS5) V5.0 - WAS Base
 - WRKACTJOB SBS(QEJBAS51) V5.1 - WAS Base
 - WRKACTJOB SBS(QEJADV4) V4.0 - WAS Advanced Edition
 - ISERIESACC job should be running
 - WRKACTJOB SBS(QEJBAES4) V4.0 - WAS Single Server Edition

ASF Tomcat

- Take a look at the subsystem to verify the Tomcat server job you set up is running
 - WRKACTJOB SBS(QSYSWRK)

© 2004 IBM Corporation

iSeries. mySeries.



Verify the installation and configuration (continued)

iSeries Access for Web

- Open browser to `http://<server_name>:<port>/webaccess/iWAHome`
- Open browser to `http://<server_name>:<port>/webaccess/iWAMain`

HATS LE

- Open browser to `http://<server_name>:<port>/HATSLE`



When things don't work...

Verify

- The HTTP server is running.
- The WebSphere subsystem is running.
- The ASF Tomcat server is running.
- That you restarted the web application server after running CFGACCWEB2.
- That you have the latest group PTFs for the HTTP server and WebSphere Application Server.
- That iSeries Access for Web is listed as an installed application in the web application server (via the IBM Web Administration interface)

If the HTTP server is using a port other than 80, verify the alias information was added to the WebSphere default_host alias table

- Not an issue if you used the IBM Web Administration for iSeries wizard to set up



When things don't work...

Check the log files first

- iSeries Access for Web
 - /QIBM/UserData/Access/Web2/logs/cmds.log High level translated log
 - /QIBM/UserData/Access/Web2/logs/cmdstrace.log Low level untranslated log
 - /QIBM/UserData/Access/Web2/logs/<appsvrtype>/<wasinst>/<appsvr>/logs/*
 - Logs for specific WAS servers. Note: some logs may be EBCDIC requiring use of WRKLINK 5250 command to view them
- WebSphere logs
 - WAS V5.0 Express for iSeries
 - /QIBM/UserData/WebASE/ASE5/<instance_name>/logs/wsadmin.traceout
 - /QIBM/UserData/WebASE/ASE5/<instance_name>/logs/activity.log
 - /QIBM/UserData/WebASE/ASE5/<instance_name>/logs/<app_server_name>/ SystemOut.log
 - WAS V5.1 Express for iSeries
 - /QIBM/UserData/WebASE51/ASE/<instance_name>/logs/wsadmin.traceout
 - /QIBM/UserData/WebASE51/ASE/<instance_name>/logs/activity.log
 - /QIBM/UserData/WebASE51/ASE/<instance_name>/logs/<app_server_name>/ SystemOut.log
 - /QIBM/UserData/WebASE51/ASE/<instance_name>/logs/<app_server_name>/ SystemErr.log

© 2004 IBM Corporation

iSeries. mySeries.



When things don't work...

Check the log files first

WebSphere logs

- WAS V5.0 Base
 - /QIBM/UserData/WebAS5/Base/<instance_name>/logs/wsadmin.traceout
 - /QIBM/UserData/WebAS5/Base/<instance_name>/logs/activity.log
 - /QIBM/UserData/WebAS5/Base/<instance_name>/logs/<app_server_name>/SystemOut.log
 - /QIBM/UserData/WebAS5/Base/<instance_name>/logs/<app_server_name>/SystemErr.log
- WAS V5.1 Base
 - /QIBM/UserData/WebAS51/Base/<instance_name>/logs/wsadmin.traceout
 - /QIBM/UserData/WebAS51/Base/<instance_name>/logs/activity.log
 - /QIBM/UserData/WebAS51/Base/<instance_name>/logs/<app_server_name>/ SystemOut.log
 - /QIBM/UserData/WebAS51/Base/<instance_name>/logs/<app_server_name>/SystemErr.log
- WebSphere Portal V5
 - /QIBM/UserData/WebAS5/Base/<instance_name>/logs/wsadmin.traceout
 - /QIBM/UserData/WebAS5/Base/<instance_name>/logs/activity.log
 - /QIBM/UserData/WebAS5/Base/<instance_name>/logs/<app_server_name>/SystemOut.log
 - /QIBM/UserData/WebAS5/Base/<instance_name>/logs/<app_server_name>/SystemErr.log
 - /QIBM/UserData/WebAS5/Base/<instance_name>/PortalServer5/log

© 2004 IBM Corporation

iSeries. mySeries.



If you contact software service

- They are going to ask you for the following information
 - OS/400 – i5/OS VRM
 - V5R1 V5R2 V5R3
 - iSeries Access for Web VRM
 - V5R1 V5R2 V5R3
 - What 5722XH2 PTFs are installed?
 - DSPPTF 5722XH2
 - Type/version of web application server
 - ASF Tomcat
 - WebSphere Portal Server V5
 - WebSphere V5.1 Express
 - WebSphere V5.1 base
 - WebSphere V5.0 Express
 - WebSphere V5.0 base
 - WebSphere V4.0 Advanced Edition
 - WebSphere V4.0 Advanced Single Server



© 2004 IBM Corporation

iSeries. mySeries.



If you contact software service

They are going to ask you for the following information

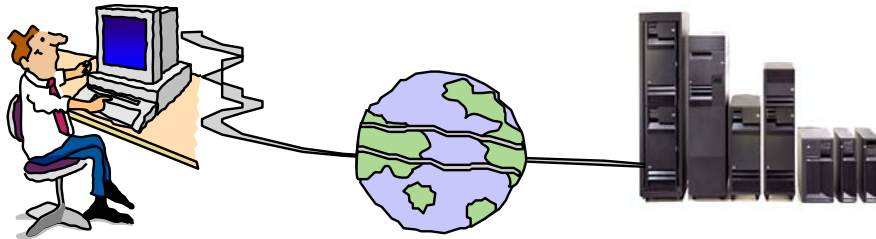
- V5R1 OS/400 Group PTFs
 - Use the following commands to display the status of the following group PTFs:
 - DSPDTAARA QHTTPSVR/SF99156 (HTTP server)
 - DSPDTAARA QJAVA/SF99069 (Java)
 - (Should only need to run one of the following)
 - DSPDTAARA QEJBAS51/SF99276 (WAS V5.1 base)
 - DSPDTAARA QASE51/SF99273 (WAS V5.1 Express)
 - DSPDTAARA QEJBAS5/SF99243 (WAS V5.0 base)
 - DSPDTAARA QIWE/SF99270 (WAS V5.0 Express)
 - DSPDTAARA QEJBADV4/SF99241 (WAS V4.0 Advanced)
 - DSPDTAARA QEJBAES4/SF99242 (WAS V4.0 Advanced Single)
- V5R2 and later OS/400 – i5/OS Group PTFs
 - Use the WRKPTFGRP command to display the status of all group PTFs.
- Log files
 - iSeries Access for Web log files - if they do not exist, it should be noted
 - /QIBM/UserData/Access/Web2 /logs/<all files>
 - /QIBM/UserData/Access/Web2/ <app_server_type>/ <instance_name>/ <app_server>/logs/ <all files>
 - WebSphere log files - if they do not exist, it should be noted
 - activity.log
 - wsadmin.traceout
 - SystemErr.log
 - SystemOut.log

© 2004 IBM Corporation

iSeries. mySeries.



iSeries Access for Web from the Internet and Security



© 2004 IBM Corporation

iSeries. mySeries.



The Question

- Would it be possible for my users to access their data from home over the internet? What would the setup/environment look like?
- How would security be enabled to protect the network?
- Could the web environment be isolated from the servers containing data?

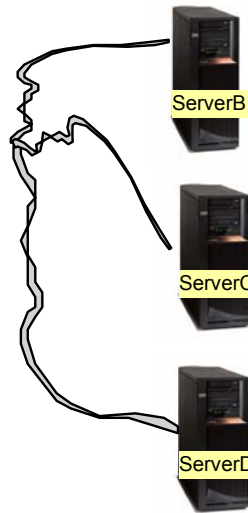
Let's look at an example...

© 2004 IBM Corporation

iSeries. mySeries.

Backend Servers

- The backend Servers B, C, D contain data.
- They are inside the company network.
- These servers do not have web serving software installed, let's assume they don't.
- I want some users to be able to always connect to Server B, some others to Server C, and some others to Server D



Administrator sets up...

ServerA

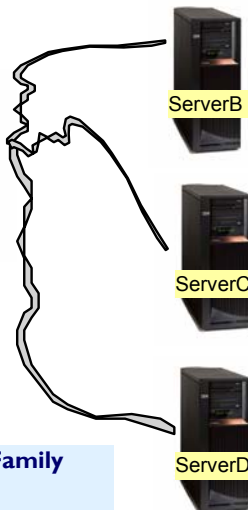
Web server A is added

This iSeries has:

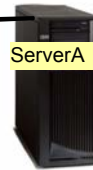
- HTTP/HTTPS
- WebSphere
- iSeries Access for Web (installed and configured)

Servers B, C, and D...

- Must have 5722-XW1 iSeries Access Family installed
- 5722-XH2 iSeries Access for Web installed (RSTLICPGM) but not configured

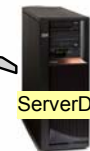
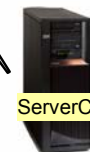
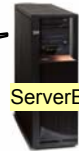
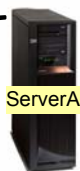


Setting up Server A



- Server A is added to the network.

- Server A has HTTP/HTTPS, WebSphere, iSeries Access for Web installed/configured.
 - Configure 3 HTTP servers -- one for Server B, one for Server C, and one for Server D
 - 3 WAS instances (one for each server)
 - Configures iSeries Access for Web in each instance
 - Adds "realm=server_name.mydomain.com" to /QIBM/UserData/Access/Web2/<wasinst>/<appsrvr> /config/webaccess.properties



- Administrator sets up...
 - Firewall between web server and data servers.

Firewall

- A firewall is put in place between the web server (A) and the data servers (B, C, D).
- iSeries Access for Web will require you to open the Host Server ports because it is running on A and only connecting to B, C, D.

Host Server ports

Notes: Firewalls (continued)

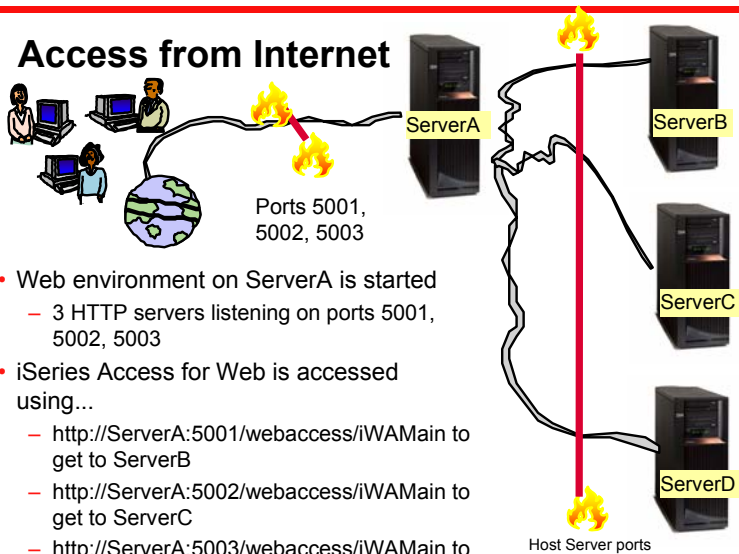
A firewall appears as a single address to the public. The firewall provides access to the untrusted network through proxy or SOCKS servers or network address translation (NAT) while hiding your internal network addresses. Consequently, the firewall maintains the privacy of your internal network. Keeping information about your network private is one way in which the firewall makes an impersonation attack (spoofing) less likely.

A firewall allows you to control traffic into and out of your network to minimize the risk of attack to your network. A firewall securely filters all traffic that enters your network so that only specific types of traffic for specific destinations can enter. This minimizes the risk that someone could use TELNET or file transfer protocol (FTP) to gain access to your internal systems.

What a firewall cannot do to protect your network

While a firewall provides a tremendous amount of protection from certain kinds of attack, a firewall is only part of your total security solution. For instance, a firewall cannot necessarily protect data that you send over the Internet through applications such as SMTP mail, FTP, and TELNET. Unless you choose to encrypt this data, anyone on the Internet can access it as it travels to its destination.

Access from Internet



- Web environment on ServerA is started
 - 3 HTTP servers listening on ports 5001, 5002, 5003
- iSeries Access for Web is accessed using...
 - `http://ServerA:5001/webaccess/iWAMain` to get to ServerB
 - `http://ServerA:5002/webaccess/iWAMain` to get to ServerC
 - `http://ServerA:5003/webaccess/iWAMain` to get to ServerD

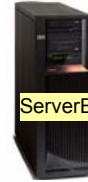
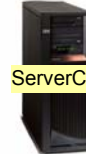
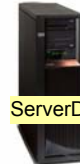
Please note:
This is only one example of how to configure this environment.



User starts browser and keys in url address...

- iSeries Access for Web user is providing different address to get to each iSeries...
 - http://ServerA:5001/webaccess/iWA Main to get to ServerB
 - http://ServerA:5002/webaccess/iWA Main to get to ServerC
 - http://ServerA:5003/webaccess/iWA Main to get to ServerD

The user must provide the correct iSeries user id and password for the backend data server to get access to the specific iSeries

Access for Web - 5250 emulation

- Could be connected to iSeries B and start a new session from there to iSeries C or iSeries D
- Identify iSeries
- Determine what workstation (device) ID to use
- Connect to another iSeries



Or could connect to another iSeries through a preconfigure shortcut

Session	Server	Action	Shortcut	Created By	Access
Rochester myiseriesC. iSeries	RCHLAND.IBM.COM	Start Copy Delete Rename Create Shortcut Edit	No	cminer	cminer
Shortcut to myiseriesD. Rochester iSeries	\CHLAND.IBM.COM	Start Copy	Yes	cminer	ROCHGROUP



How can I get Access for Web to start automatically after my system IPL's each night?

I am using WAS V5 Express for iSeries

- You can use a CL command to start you application server instance.
 - But before making the call, you need to be sure to start the WAS Express subsystem first by running the command:


```
STRSBS QASE5/QASE5
```
 - To start your application server from the OS/400 command line, run this command:


```
SBMJOB CMD(CALL PGM(QASE5/QASESTRSVR) PARM('-instance'  
'/QIBM/UserData/WEBASE/ASE5/instance')) JOB(instance) JOBD(QASE5/QASE5)  
JOBQ(QASE5/QASE5) USER(QEJBSVR) LANGID(*USRPRF) CNTRYID(*USRPRF)  
CCSID(*USRPRF)
```
 - where instance is the name of the application server instance that you want to start. You can only start one application server when you run this command. To start additional application servers, you must run the command separately for each application server that you want to start.
 - Note: To run this command, your user profile must have *USE authority to the QEJBSVR user profile. Use the Edit Object Authority (EDTOBJAUT) command to add or verify that your user profile has this authority.



How can I get Access for Web to start automatically after my system IPL's each night? (continued)

I am using WAS V5.1 "Base edition" for iSeries

- You can configure the HTTP server for your WAS instance to automatically start the WAS instance when it starts.
- Use the STRTCPSVR *HTTP HTTPSVR(IWA51BASE) command to start the HTTP server as part of your IPL procedures and it will start your WAS application server.

© 2004 IBM Corporation

iSeries. mySeries.



How can I get Access for Web to start automatically after my system IPL's each night? (continued)

The screenshot shows the IBM Web Administration for iSeries interface in a Microsoft Internet Explorer browser window. The browser address bar shows the URL: http://<server_name>:2001/HTTPAdmin. The page title is "IBM Web Administration for iSeries". The navigation tabs include "Setup", "Manage", "Advanced", and "Related Links". The main content area is titled "HTTP Servers" and shows a list of servers, with "IWA51BASE - Apache" selected. The "Server area" is set to "Global configuration". The "WebSphere Application Server" configuration page is displayed, showing the "General" tab. The "WebSphere Instance" is set to "default". The "Start all WebSphere application server(s) for the associated WAS instance when this HTTP server is started" checkbox is checked, and the "Stop all WebSphere application server(s) for the associated WAS instance when this HTTP server is stopped" checkbox is also checked. The "WebSphere Application Server, 5.1 (base)" option is selected. The "OK", "Apply", and "Cancel" buttons are visible at the bottom of the configuration panel.

© 2004 IBM Corporation

ies.

How do I know who is connected through Access for Web?

- Look in Connection Pool Status

Connection Pool Status

Connection Summary

Setting	Value	Description
Active connections	0	Total number of active connections for all users.
Available connections	7	Total number of available connections for all users.
Total connections:	7	Total number of active and available connections for all users.
Total users:	3	Total number of users that have connected since iSeries Access for Web started.
Active users:	3	Total number of users that have active or available connections.

Connection Details

System	User	Active	Available	Action
myiseries	HLAND.IBM.COM WARRENA	0	2	Clear
myiseries	HLAND.IBM.COM GILBERTM	0	3	Clear
myiseries	HLAND.IBM.COM CMINER	0	2	Clear

Setting some limits for Access for Web use...

- Connection Pool Settings
- Can get to this via:
 - Link on Connection Pool Status screen
 - Customize -> Settings

Settings - Connection Pool

Setting	Value	Description
Cleanup interval	5 minutes	Specify how often to clean up connections.
Connections per user	No maximum	Specify the maximum number of concurrent connections allowed per user.
Maximum inactivity	1 hour	Specify the maximum time a connection can be inactive before it is cleaned up.
Maximum lifetime	24 hours	Specify the maximum time a connection can exist before it is cleaned up.
Maximum use count	500	Specify the maximum number of times a connection can be used before it is cleaned up.
Maximum use time	No maximum	Specify the maximum time a connection can be active before it is cleaned up.

Buttons: Save, Cancel, Apply, Shipped Defaults




WebSphere Application Server Tip

- Information/Tips
 - JVM (java virtual machine) consideration
 - When iSeries Access for Web is configured, a property is set for the JVM of the application server that iSeries Access for Web is configured to. The property is
 - client.encoding.override
 - This property could conflict with other deployed web applications.
 - The resolution to a conflict is to run the conflicting applications in different instances of WebSphere.



If using WAS Network Deployment for iSeries

- For the WebSphere Application Server Network Deployment for iSeries environment
 -  WebSphere v5.0/5.1 Base Edition must be installed
 - iSeries Access for Web does not support WebSphere instances that are federated to the WebSphere Network Deployment environment

Additional information

- The following resources are available
 - HTTP Server redbook
 - <http://www.redbooks.ibm.com/redpieces/pdfs/sg246716.pdf>
 - Section 6.3 Encrypting your data with SSL and TLS
 - Section 6.4 Proxy server: Protecting direct access
 - Information Center - Setting up a reverse proxy for HTTP server
 - <http://publib.boulder.ibm.com/series/v5r2/>
 - ic2924/index.htm?info/rzaie/rzaireverseproxy.htm
- See Appendix A for additional information

Appendix A. Additional Documentation



Enjoy the rest of
your conference!



Notes: iSeries Access for Web connection to backend server

In an environment where access to multiple iSeries servers is required, from a performance perspective, installing the full suite of software to enable iSeries Access for Web on each machine may not be desirable. Due to financial constraints, it may not be appropriate to install WebSphere Application Server on all iSeries servers.

The Redbook, iSeries Access for Web V5R2 and WebSphere Host Publisher V4.0 - Section 2.5 Connecting to multiple iSeries servers, describes how to modify the iSeries Access for Web configuration so that iSeries Access for Web can connect to other iSeries servers within the network.

The redbook is available at: <http://publib-b.boulder.ibm.com/Redbooks.nsf/9445fa5b416f6e32852569ae006bb65f/483aa6103bba479a85256b6e0057ec4b?OpenDocument>

or simply go to the iSeries Access for Web website at <http://www-1.ibm.com/servers/eserver/series/access/web/>



Notes: HTTP/HTTPS - SSL



The Internet was designed to be an open system and it allows any computer on the network to see the messages passing through. To consider an information transaction secure, it has to have the following characteristics:

Confidentiality

Use encryption if you want to ensure that the contents of the message remain private as they pass through the network.

Integrity

Use encryption and digital signatures if you want to ensure integrity. Messages are not altered while being transmitted.

Accountability

Use digital signatures when both the sender and the receiver agree that the exchange took place to ensure accountability.

Authenticity

OS/400 SSL provides server authentication so you can authenticate with whom you are talking.

You can configure the iSeries server to use a security protocol, called Secure Sockets Layer (SSL), for data encryption and client/server authentication. A client establishes an SSL session by sending an HTTPS request to the server on the SSL port. If SSL client authentication is enabled on the server, a client certificate is requested for any HTTPS request. SSL uses a handshake protocol where the server authenticates and the client authenticates if enabled. When authenticated, they agree on the security keys to use for the session, and the algorithms to be used for encryption and message digests or hashes. When a session has been established, all data exchanged on that session is encrypted.

Below is a highlevel list of steps involved with enabling HTTPS. The steps may not address all issues relative to your environment. It is recommended that the iSeries information center and HTTP server documentation be referenced to enable HTTPS.

1. If you are new to SSL, HTTPS, or digital certificates, review the following information before configuring SSL.
 - Security concepts information in the iSeries Information Center (<http://www.ibm.com/eserver/series/infocenter>). Look for information under the topics Networking-->Networking Security.
 - Security and SSL information in the HTTP server documentation at <http://www.ibm.com/servers/eserver/series/software/http>
2. Configure your HTTP server instance to allow SSL connections. You must already have created an HTTP server that you want to enable to run SSL.
3. Configure digital certificates through the Digital Certificate Manager on the iSeries server.
4. Configure the web application server to use the SSL port. The SSL port must be listed within the WebSphere virtual host alias table.
5. Open a browser to one of the following URLs:
 - If using the default SSL port of 443
`https://<server_name>/webaccess/WAHome`
 - If using any other port number, replace the <port> with the port number configured with the HTTP server.
`https://<server_name>:<port>/webaccess/WAHome`



Notes: Firewalls



A firewall is a blockade between a secure internal network and an untrusted network such as the Internet. Most companies use a firewall to connect an internal network safely to the Internet, although you can use a firewall to secure one internal network from another also.

A firewall provides a controlled single point of contact (called a chokepoint) between your secure internal network and the untrusted network. The firewall:

- Lets users in your internal network use authorized resources that are located on the outside network.
- Prevents unauthorized users on the outside network from using resources on your internal network.

When you use a firewall as your gateway to the Internet (or other network), you reduce the risk to your internal network considerably. Using a firewall also makes administering network security easier because firewall functions carry out many of your security policy directives.

How a firewall works

To understand how a firewall works, imagine that your network is a building to which you want to control access. Your building has a lobby as the only entry point. In this lobby, you have receptionists to welcome visitors, security guards to watch visitors, video cameras to record visitor actions, and badge readers to authenticate visitors who enter the building.

These measures may work well to control access to your building. But, if an unauthorized person succeeds in entering your building, you have no way to protect the building against this intruder's actions. If you monitor the intruder's movements, however, you have a chance to detect any suspicious activity from the intruder.

Firewall components

A firewall is a collection of hardware and software that, when used together, prevent unauthorized access to a portion of a network. A firewall consists of the following components:

- Hardware. Firewall hardware usually consists of a separate computer or device dedicated to running the firewall software functions.
- Software. Firewall software provides a variety of applications. In terms of network security, a firewall provides these security controls through a variety of technologies:
 - Internet Protocol (IP) packet filtering
 - Network address translation (NAT) services
 - SOCKS server
 - Proxy servers for a variety of services such as HTTP, Telnet, FTP, and so forth
 - Mail relay services
 - Split Domain name services (DNS)

© 2004 IBM Corporation

iSeries. mySeries.



Notes: Firewalls (continued)



- Logging
- Real-time monitoring

Note: Some firewalls provide virtual private networking (VPN) services so that you can set up encrypted sessions between your firewall and other compatible firewalls.

Using firewall technologies

You can use the firewall proxy servers, SOCKS server, or NAT rules to provide internal users with safe access to services on the Internet. The proxy and SOCKS servers break TCP/IP connections at the firewall to hide internal network information from the untrusted network. The servers also provide additional logging capabilities.

You can use NAT to provide Internet users with easy access to a public server behind the firewall. The firewall still protects your network because NAT hides your internal IP addresses.

A firewall also can protect internal information by providing a DNS server for use by the firewall. In effect, you have two DNS servers: one that you use for data about the internal network, and one on the firewall for data about external networks and the firewall itself. This allows you to control outside access to information about your internal systems

When you define your firewall strategy, you may think it is sufficient to prohibit everything that presents a risk for the organization and allow everything else. However, because computer criminals constantly create new attack methods, you must anticipate ways to prevent these attacks. As in the example of the building, you also need to monitor for signs that, somehow, someone has breached your defenses. Generally, it is much more damaging and costly to recover from a break-in than to prevent one.

In the case of a firewall, your best strategy is to permit only those applications that you have tested and have confidence in. If you follow this strategy, you must exhaustively define the list of services you must run on your firewall. You can characterize each service by the direction of the connection (from inside to outside, or outside to inside). You should also list users who you will authorize to use each service and the machines that can issue a connection for it.

What a firewall can do to protect your network

You install a firewall between your network and your connection point to the Internet (or other untrusted network). The firewall then allows you to limit the points of entry into your network. A firewall provides a single point of contact (called a chokepoint) between your network and the Internet. Because you have a single point of contact, you have more control over which traffic to allow into and out of your network.

© 2004 IBM Corporation

iSeries. mySeries.



iSeries & WebSphere Resources & Deliverables

iSeries Information Center
<http://www.ibm.com/series/infocenter>

iSeries site
www.iseries.ibm.com/

iSeries WebSphere Application Server
<http://www-1.ibm.com/servers/eserver/series/software/websphere/wsappserver/>

PartnerWorld for Developers, iSeries & WebSphere
<http://www.iseries.ibm.com/developer/websphere/>

IBM eServer Solutions
<http://www-1.ibm.com/servers/eserver/series/solutions/>

iSeries e-business Solutions
<http://www-1.ibm.com/servers/eserver/series/ebusiness/>

iSeries B2B Solutions
<http://www-1.ibm.com/servers/eserver/series/btob/>

Connect for iSeries
<http://www-1.ibm.com/servers/eserver/series/btob/connect/v11high.html>

WebSphere Commerce Suite for iSeries
<http://www-1.ibm.com/servers/eserver/series/ebusiness/wcs51.html>

iSeries and e-commerce
<http://www-1.ibm.com/servers/eserver/series/ebusiness/ecommerce.htm>

iSeries HTTP Server
<http://www-1.ibm.com/servers/eserver/series/software/http/index.html>

WebSphere Development Studio for iSeries
<http://www-3.ibm.com/software/ad/wds400/>

iSeries and WebSphere References
<http://www.as400.ibm.com/developer/java/solutions/jjem.html>
<http://www2.software.ibm.com/casestudies/swcsweb.nsf/platform>

iSeries Solution Finder
<http://www.iseries.ibm.com/btobpartner/>

iSeries & Domino
<http://www-1.ibm.com/servers/eserver/series/domino/>

Dedicated Server for Domino
<http://www-1.ibm.com/servers/eserver/series/domino/dsd.htm>

Workload Estimator for iSeries, WAS, WCS & Domino, HTTP Server, Java, etc.
<http://as400service.ibm.com/estimator/>

iSeries Custom Technology Center
<http://www-1.ibm.com/servers/eserver/series/service/ctc/>

iSeries Technical Support
<http://as400service.ibm.com/>

iSeries Technical Studio
<http://www.as400.ibm.com/tstudio/>

1st Install for iSeries & WebSphere Application Server
<http://www.iseries.ibm.com/developer/websphere/assistance.html>

iSeries ToolsNet (Tools & Middleware)
<http://www.iseries.ibm.com/developer/tools/>

iSeries & Services Network
<http://as400service.ibm.com/supporthome.nsf/document/19251245>

iSeries e-business Handbook (SG24-5694-01)
<http://www.redbooks.ibm.com/abstracts/sg245694.html>

© 2004 IBM Corporation

iSeries. mySeries.



iSeries & WebSphere Resources & Deliverables

WebSphere Commerce Suite With Back-End Order Mgmt.
<http://ibm.com/redbooks>

iSeries Technology Center
<http://www.iseries.ibm.com/service/itc/ebiz.htm>

iSeries University
<http://www-3.ibm.com/services/learning/community/as400/>

WebSphere Application Server Overview
<http://www-4.ibm.com/software/webservers/appserv/>

iSeries & WebSphere Documentation

Redbooks & Red Pieces

Form Numbers/Web Sites
Building iSeries Applications for WebSphere Advanced Edition
SG24-5691
Building Java Applications for the iSeries with VisualAge for Java SG24-6245
Integrating WCS with Domino Back-End Applications
-
<http://ibm.com/redbooks> (search for REDP0141)

Java & WebSphere Performance on iSeries
- <http://publib-b.boulder.ibm.com/Redbooks.nsf/RedpieceAbstracts/sg246256.html?Open>

- iSeries Application Development Directions white paper is now available
<http://www.iseries.ibm.com/developer/tools/documents/addir/index.html>
- Connect for iSeries with WebSphere Commerce Suite Red Paper
<http://www.redbooks.ibm.com/redpapers/pdfs/redp0127.pdf>

Tools for Application Reface and Redesign
- <http://www.as400.ibm.com/developer/comm/pidtechpapers.html?Tools>
Introduction to Enterprise JavaBeans for AS/400
SG24-5192-00
Web enabling AS/400 Applications with WebSphere Studio
SG24-5634-00
Building AS/400 Applications with WebSphere Standard Edition 2.0
SG24-5635-00
Building AS/400 C/S Apps with Java
SG24-2152-02
Building AS/400 Internet-based applications with Java
SG24-5337-00

WebSphere Commerce Suite
www-4.ibm.com/software/webservers/commerce/

WebSphere Payment Manager
www-4.ibm.com/software/webservers/paymgr/

MQSeries
www.ibm.com/software/its/mqseries
IBM Redbooks
<http://www.redbooks.ibm.com/>

iSeries Nation
<http://www-1.ibm.com/servers/eserver/series/announce/form.html>

© 2004 IBM Corporation

iSeries. mySeries.



Trademarks and Disclaimers

© IBM Corporation 1994-2004. All rights reserved.
References in this document to IBM products or services do not imply that IBM intends to make them available in every country.

The following terms are trademarks of International Business Machines Corporation in the United States, other countries, or both:
Instruction: Refer to the following URL: <http://www.ibm.com/legal/copytrade.shtml>. Edit the list below, IBM subsidiary statement, and special attribution companies which follow so they coincide with your presentation.

AS/400	e-business on demand	i5/OS
AS/400e	IBM	OS/400
@Server	IBM (logo)	
	iSeries	

Rational is a trademark of International Business Machines Corporation and Rational Software Corporation in the United States, other countries, or both.
Intel, Intel Inside (logos), MMX and Pentium are trademarks of Intel Corporation in the United States, other countries, or both.
Linux is a trademark of Linus Torvalds in the United States, other countries, or both.

Microsoft, Windows, Windows NT, and the Windows logo are trademarks of Microsoft Corporation in the United States, other countries, or both.
UNIX is a registered trademark of The Open Group in the United States and other countries.

SET and the SET Logo are trademarks owned by SET Secure Electronic Transaction LLC.

Java and all Java-based trademarks are trademarks of Sun Microsystems, Inc. in the United States, other countries, or both.

Other company, product or service names may be trademarks or service marks of others.

Information is provided "AS IS" without warranty of any kind.

All customer examples described are presented as illustrations of how those customers have used IBM products and the results they may have achieved. Actual environmental costs and performance characteristics may vary by customer.

Information concerning non-IBM products was obtained from a supplier of these products, published announcement material, or other publicly available sources and does not constitute an endorsement of such products by IBM. Sources for non-IBM list prices and performance numbers are taken from publicly available information, including vendor announcements and vendor worldwide homepages. IBM has not tested these products and cannot confirm the accuracy of performance, capability, or any other claims related to non-IBM products. Questions on the capability of non-IBM products should be addressed to the supplier of those products.

All statements regarding IBM future direction and intent are subject to change or withdrawal without notice, and represent goals and objectives only. Contact your local IBM office or IBM authorized reseller for the full text of the specific Statement of Direction.

Some information addresses anticipated future capabilities. Such information is not intended as a definitive statement of a commitment to specific levels of performance, function or delivery schedules with respect to any future products. Such commitments are only made in IBM product announcements. The information is presented here to communicate IBM's current investment and development activities as a good faith effort to help with our customers' future planning.

Performance is based on measurements and projections using standard IBM benchmarks in a controlled environment. The actual throughput or performance that any user will experience will vary depending upon considerations such as the amount of multiprogramming in the user's job stream, the I/O configuration, the storage configuration, and the workload processed. Therefore, no assurance can be given that an individual user will achieve throughput or performance improvements equivalent to the ratios stated here.

Photographs shown are of engineering prototypes. Changes may be incorporated in production models.

© 2004 IBM Corporation

iSeries. mySeries.