



Deep Dive Into System i Access for Web Session 1:

Overview

November 2008

Linda Hirsch

LLHIRSCH@us.ibm.com

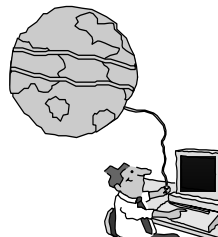
<http://www.ibm.com/systems/i/software/access/web>

© IBM Corporation 2008



Table of Contents

- What is System i Access for Web?
- Getting started
- Ways to roll out to end users
- Control access to functions



What is System i Access for Web?

End users can leverage business information, applications, and resources across an enterprise by extending the iSeries resources to the client desktop through a web browser

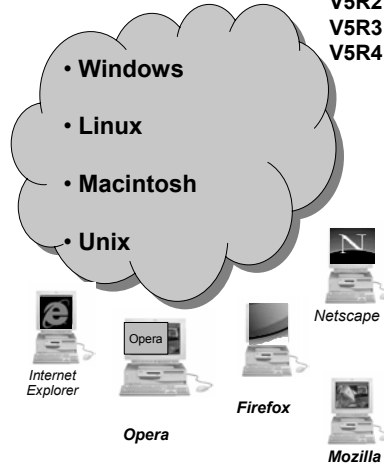
OS/400
V5R2
V5R3
V5R4

Provides access to iSeries through a browser

- 5250 access
- Access to database, integrated file system, printers, output queues, jobs
- Can run batch commands and send/receive messages

It has the following advantages:

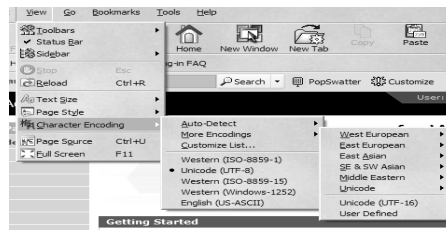
- Is server based
- Requires only a browser on the client, no configuration required at desktop, no applets installed on desktop
- Uses industry standard protocols - HTTP, HTTPS and HTML



Fully Integrated with your Browser

❖ Use any code page available in your browser

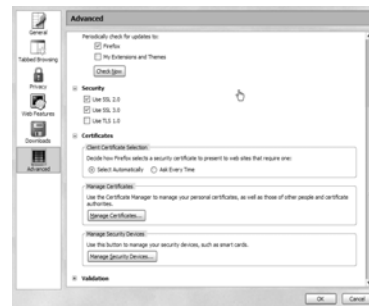
- System i Access for Web translated into 38 NLVs (including DBCS)
- See screens in preferred language



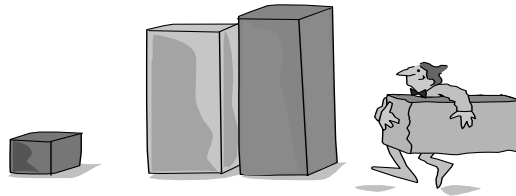
❖ Use any keyboard setting available in Windows

❖ Font Size

❖ Set up your SSL through your browser



Packaging and Ordering



System i Access Family - Packaging

V6R1 5761-XW1 System i Access Family	V5R4 5722-XW1 iSeries Access Family
System i Access for Windows, 5761-XE1, V6R1	iSeries Access for Windows, 5722-XE1, V5R4
System i Access for Web, 5761-XH2, V6R1	iSeries Access for Web, 5722-XH2, V5R4
System i Access for Linux, 5761-XL1, Vx.x (V6R1)	iSeries Access for Linux, 5722-XL1, V1.10 (V5R4)
System i Access for Wireless, 5722-XP1, V5R3	iSeries Access for Wireless, 5722-XP1, V5R3
V5R4 i5/OS customers not wanting to upgrade to V6R1 i5/OS but want the new V6R1 System i Access Family clients can order no-charge Feature No. 2649 of Product No. 5722-XW1	

- NOTE: iSeries Access for Web is available on V5R1 and later. This chart summarizes the releases that can currently be ordered.

Products - Focus

Description	Product	Product Number	Need 57xx-XW1* to use?
Family Name	➤System i Access Family	57xx-XW1	
Windows client	➤System i Access for Windows	57xx-XE1	Yes (for 5250 and Data Transfer)
Linux client	➤System i Access for Linux	57xx-XL1	Yes (for 5250)
Browser Access	➤System i Access for Web	57xx-XH2	Yes
Handheld / Wireless offering	➤System i Access for Wireless ➤iSeries Toolbox for Java ME	57xx-XP1	No
i5/OS systems management	➤System i Navigator ➤Operations Console	Packaged in 57xx-XE1	No

* 57xx = 5761 or 5722

Flexible Purchase Options:

⊛ Processor-Based = purchase price based on software tier, connect unlimited numbers of users

⊛ User-Based = purchase only number of users who will be concurrently connected

Notes:

⊛ Can upgrade from User-Based to Processor-Based, but cannot go back to User-Based after purchasing Processor-Based

⊛ Software maintenance included in base i5/OS software subscription

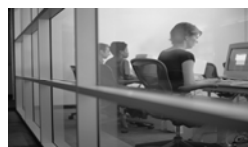
System i Access Family included with new hardware

• **System i Access Family (5722-XW1 or 5761-XW1) unlimited user feature included with the following System i hardware**

- **System i Model 515 Express configurations**
 - See Announcement Letter 107-181 dated 4/1/07 for more details
- **System i Model 525 Express and CBU configurations**
 - See Announcement Letter 107-182 dated 4/1/07 for more details
- **System i Model 570 with POWER6 technology**
 - See Announcement Letter 107-448 dated 7/31/07 for more details
- **The new Power Systems Models 570 and 595 - announced April 2008**

• **Any i5/OS user connecting to the above System i models is entitled to use any of the System i Access Family products at no additional charge. This includes:**

- **System i Access for Windows**
- **System i Access for Web**
- **System i Access for Linux**



Functions you can perform with System i Access for Web V6R1

Print

- Printer output
- PDF Printer output
- Printers
- PDF Printers
- Internet Printers
- Internet Printer Shares
- Printer shares
- Output Queues

5250

- Active Sessions
- Start 5250 Session
- Configured Sessions
- Bypass Sign-on

Files

- Browse Files
- File Shares
- Browse File Share

Items marked with “**” are new in the V6R1 version

Messages

- Display Messages
- Send Messages
- Sametime
- Operator Messages
- Message Queue

Database

- Tables
- My Request
- Run SQL
 - Open Office Formats
 - ** Wizards supports joins across multiple tables
 - ** Chart SQL results
- Copy Data to Table
- Import Requests
 - System i Access for Windows
 - Query Manager
 - Query/400
- Extract Server Data

Commands

- Run commands
- My commands
- Search

My Personal Folder

Jobs

- User Jobs
- Server Jobs

Customize

- Preferences
- Policies
- Settings
- Transfer configuration data

Download

Other

- Bookmarks
- Change Password
- Connection Pool
- Status
- Trace

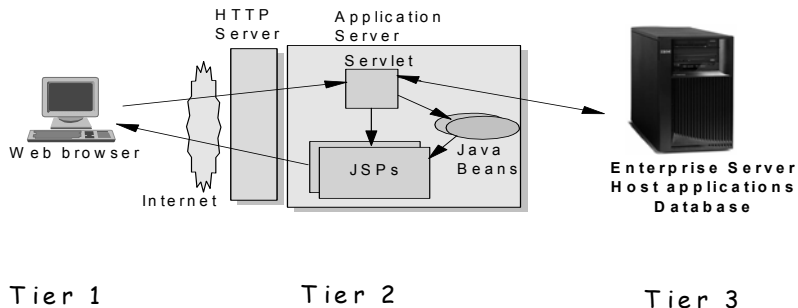
Single sign-on

- EIM (WAS authentication)
- ** Windows domain login (WAS authentication)

** Scheduling of tasks

Getting Started

Before you start with Access for Web you must get your web application server running



Supported Web Application Servers

- The System i Access for Web servlet code can be used with any of the following web application servers:
 - Integrated web application server
 - WebSphere® Application Server V6.1 and V6.0 – Express for i5/OS
 - WebSphere Application Server V6.1 and 6.0 Base and Network Deployment
 - WebSphere Application Server V5.1 - Express for iSeries
 - WebSphere Application Server V5.0 - Express
 - WebSphere Application Server V5.1 and 5.0 Base and Network Deployment Editions
 - ASF Tomcat (V5R4 and earlier releases)
- The System i Access for Web portlet code can be used with any of the following portal servers.
 - IBM Workplace Services Express V2.6
 - WebSphere Portal for Multiplatforms V6.0
 - WebSphere Portal for Multiplatforms V5.1.0.1
 - WebSphere Portal Express for Multiplatforms V5.0.2
 - WebSphere Portal Express Plus for Multiplatforms V5.0

PTFs required for latest web app server and portal support:

<http://www.ibm.com/systems/i/software/access/web/servicepacks.html>

Integrated Web application server

What is it? Does System i Access for Web support it?

- **What is the i5/OS integrated Web application server?**
 - A web application engine much like ASF Tomcat
 - Uses minimal system resources, similar to ASF Tomcat
 - Minimal effort by an Administrator to maintain
 - V5R4 is the last release i5/OS will contain ASF Tomcat
- **How is it packaged?**
 - 5761-DG1 and 5722-DG1 IBM HTTP Server for i5/OS
 - Integrated Web application server 7.1 is available in the DG1 group PTF
 - V5R4 SF99114 level 13 or later
 - V6R1 SF99115 level 1 or later
- **System i Access for Web support**
 - V5R4 and V6R1 System i Access for Web support the i5/OS integrated Web application server
 - V5R4 iSeries Access for Web can be installed and is supported on V5R4 and V5R3 i5/OS
 - V6R1 System i Access for Web can be installed and is supported on V6R1 and V5R4 i5/OS

http://www.ibm.com/systems/i/software/websphere/

IBM Systems > System i >

WebSphere Application Server for i5/OS

Features

WebSphere Application Server Version 6.1 for i5/OS is announced. To find out more about the new version or any other of the supported versions – please click on the links below:

Version 6.1

- IBM WebSphere Application Server V6.1 for i5/OS
- IBM WebSphere Application Server for Developers V6.1 for i5/OS
- IBM WebSphere Application Server Network Deployment V6.1 for i5/OS
- IBM WebSphere Application Server – Express V6.1 for i5/OS

Version 6.0

- IBM WebSphere Application Server V6.0 for OS/400
- IBM WebSphere Application Server for Developers V6.0 for OS/400
- IBM WebSphere Application Server Network Deployment V6.0 for OS/400
- IBM WebSphere Application Server – Express V6.0 for OS/400

Version 5.1

- IBM WebSphere Application Server V5.1 for iSeries
- IBM WebSphere Application Server for Developers V5.1 for iSeries
- IBM WebSphere Application Server Network Deployment V5.1 for iSeries
- IBM WebSphere Application Server – Express for iSeries V5.1

Version 5.0

- IBM WebSphere Application Server V5.0 for iSeries
- IBM WebSphere Application Server Network Deployment V5.0 for iSeries
- IBM WebSphere Application Server – Express for iSeries V5.0

Need directions?

iSeries

- iSeries Developer roadmap
- An Independent Analysis of the iSeries Developer Roadmap - Updated for 2006 (1.4MB)
- The Business Benefits of iSeries Application Modernization (183KB)
- Get Adobe® Reader®

Emerging Technology

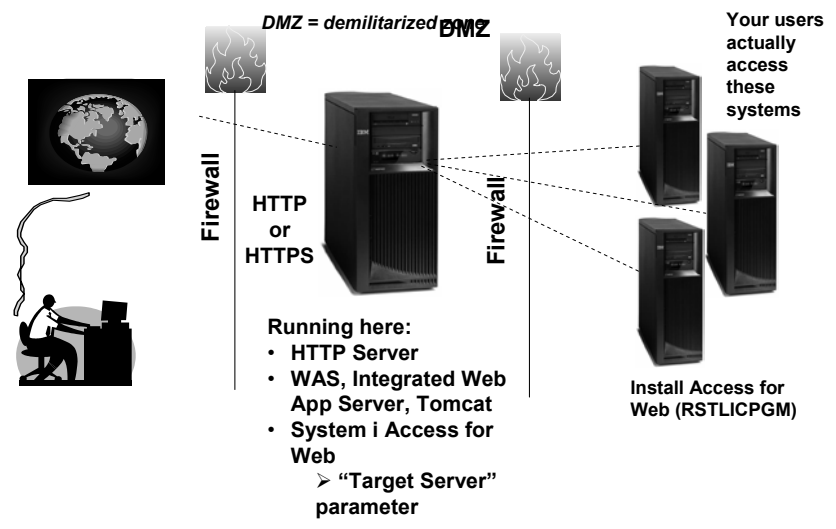
- Dynamic web site development for the non-technical business user.

Pilot Pricing Program

- IBM Software Pilot Pricing Program for IBM eServer i5 520 Systems

Local intranet

Setting up your web application server



Only need to set up one web application server

Get System i Access for Web running

- **Get a copy of the System i Access for Web Install & Users Guide**
 - <http://www.ibm.com/systems/i/software/access/web/doc.html>
- **Install System i Access for Web from your i5/OS stacked media.**
 - RSTLICPGM - Install Access for Web, 5722-XH2, into QIBM directory
- **Configure and start System i Access for Web.**
 - CFGACCWEB2 - Configure the System i Access for Web application server
 - STRACCWEB2 - Start the System i Access for Web application server.
- **Set some policies to enable or limit access to various functions of Access for Web**

System i Access for Web Documentation on the Web...

V6R1

V6R1 System i Access for Web is supported on V6R1 and V5R4 i5/OS.



Connecting to System i: System i Access for Web (Information Center)	HTML
	PDF
System i Access for Web Single Sign-on Using WebSphere SPNEGO Support	PDF
Automating Tasks - HTTPS/SSL	PDF
Configuring an Integrated Web Application Server Instance	PDF

⬆ Back to top

V5R4

V5R4 iSeries Access for Web is supported on V5R4 and V5R3 i5/OS.



Connecting to iSeries: iSeries Access for Web (Information Center)	HTML
	PDF
URL Interfaces to V5R4 iSeries Access for Web	PDF

⬆ Back to top

V5R3

V5R3 iSeries Access for Web is supported on V5R3 i5/OS and V5R2 i5/OS.

<http://www.ibm.com/systems/i/software/access/web/doc.html>

4 CL Commands in System i Access for Web

Example of the CL commands

- **Configure Command example when using WebSphere Application**

Server V5.1 - Express for iSeries

- CFGACCWEB2 -appsvrtype *WAS51EXP -wasinst iwa51exp -appsvr iwa51exp

- **Start Command example when using WebSphere Application**

Server V5.1 - Express for iSeries

- STRACCWEB2 APPSVRTYPE(*WAS51EXP) WASINST(MYINST) APPSVR(*DEFAULT)

- **End Command example when using WebSphere Application**

Server V5.1 for iSeries

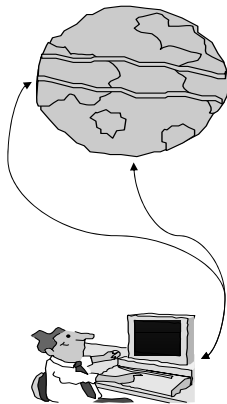
- ENDACCWEB2 APPSVRTYPE(*WAS51) WASINST(DEPTXYZ) APPSVR(*DEFAULT)
- Sometimes you may need to end Access for Web so you can make changes, then start it again.

- **Remove Command**

- The Remove System i Access for Web (RMVACCWEB2) command is used to remove the System i Access for Web configuration from a web application server

Users can now Connect!

- Open browser
- Key in System i url
- Prompted for i5/OS user id and password

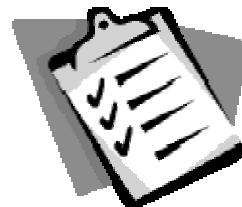


Different Ways to Roll Out System i Access for Web

- **Use 'out of the box'**
 - Set some policies to limit what functions are accessible to your users, and give them the URL address to System i Access for Web
- **Use 'out of the box', but set up predefined functions**
 - You can set up preconfigured 5250 sessions that users (or groups of users) can run, can create predefined database requests for users to run, set up commands users can run, etc.
- **Create your own 'window' to your system through Access for Web**
 - Add company banners to screens, set up 'click and link' tasks that users can perform, set up macros to simplify user access.
- **Use Access for Web with the IBM WebSphere Portal solution**
 - A single unified workspace in which your employees, trading partners, and customers can easily find and use the applications and information that they need

Different Ways to Roll Out System i Access for Web

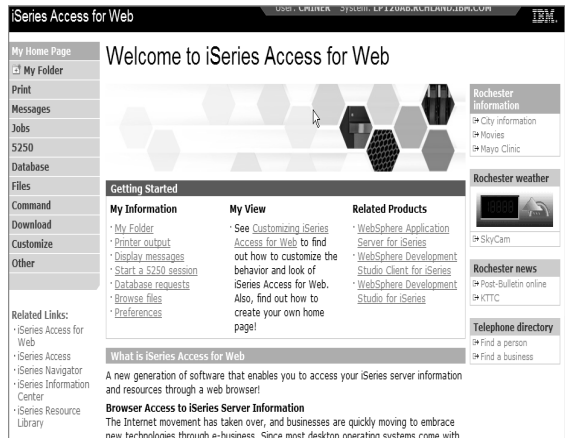
- **Use 'out of the box'**
- **Use 'out of the box', but set up predefined functions**
- **Create your own 'window' to your system through System i Access for Web**
- **Use the WebSphere Portal solution**



Home Page entry point

Home Page = `http://<myiseries>:<port>/webaccess/iWAHome`

- System i Access for Web 'Home Page' out-of-the-box view
- This page is totally customizable



New 'look' in V5R4...

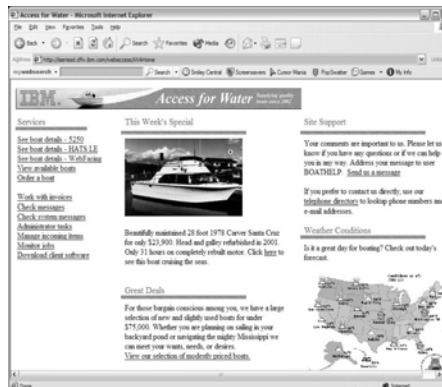
Your Window to your System i

`http://<myiseries>/webaccess/iWAHome`

Customized 'window' to i5/OS

Window is associated with i5/OS user profiles

- An administrator can create multiple different 'windows' based on user profile / group profile for different types of users.
- Can tightly control what functions a user can perform on your iSeries
- Tie in with other web applications (such as WebFacing and HATS) from here as well
- Link to other systems, not just System i



- One view and set of functions for the Accounting department
- Another view and set of functions for the Warehouse staff

Customized Home Page

Customized view of the Home Page

- Could be used as 'entry' point to iSeries
- Let's drill down and look at some of this...



➡ <http://iseriesd.demos.ibm.com/webaccess/iWAHome>

Using 5250 emulator in System i Access for Web

The company banner, 'Access for Water' is carried forward on all screens

- Went into 'Customize → General' and pointed at file with the company .gif.

5250 emulator in Access for Web

- Application looks better and did no work
- Can use 5250 Bypass Signon (new in V5R4) to bypass i5/OS sign-on screen
- Can use Access for Web Macro support to start the RPG application (BOATS)

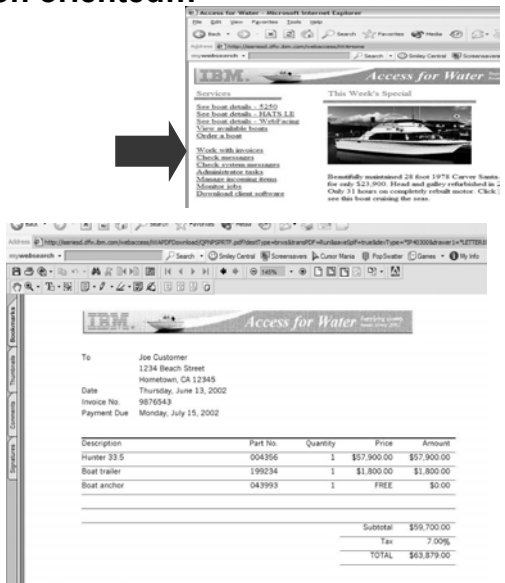


Zero (0) extra steps

Task Oriented – not function oriented...

Selected 'work with invoices'

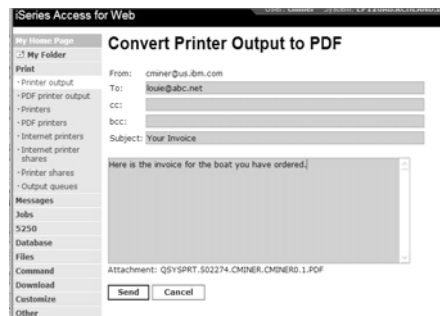
- This takes user to 'Printer Output' – user's Spoolfile printer output
- SCS or AFP printer output is converted to PDF 'on the fly' by Access for Web to PDF
- Since it is now in .PDF format, user can print it to any network printer



E-mail PDF output

E-mail is integrated with System i Access for Web

- Your mail server can be anywhere in your network
- Users receiving your e-mail need only an e-mail address



User selects an option in the Printer Output screen to 'e-mail PDF output'

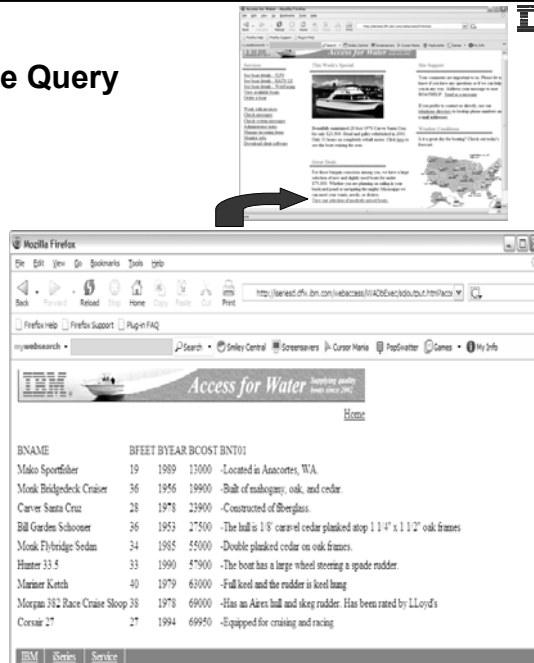
- The PDF document is then included in the e-mail
- Sender's e-mail address filled in; user only needs to address it.



Run an i5/OS Database Query

Clicked on 'View our selection of moderately priced boats'

- Administrator had previously built an SQL Query using the System i Access for Web 'Database' function
- Could also have been set up to show in an .XLS or .PDF format
 - a variety of other output types as well



Try out System i Access for Web on a demo server!

Start your browser and connect to the following web site:
<http://iseriesd.demos.ibm.com/webaccess/iWAHome> (case sensitive)

<p>User ID = WACUST</p> <p>Password = demo2pwd</p>	<p>This shows the basic look of System i Access for Web as we ship it. You can try various functions -- including working with printer output, creating database requests, etc. Click on the 5250 tab, sign onto the iSeries, then start an RPG application called BOATS and run it.</p>
<p>User ID = BOATADMIN</p> <p>Password = demo2pwd</p>	<p>This is an example of how a customer might design a web page for their use. You will see that an end user could start the same BOATS application by clicking on the 5250 session, or they could have used HATS to run the application. You will also see other links that would let a user work with spooled file information, work with IFS, run database requests, etc..</p>

Send email to: LLHIRSCH@us.ibm.com to reset the user profiles if either gets disabled.



More Documentation...

Article describing how 'Access for Water' web page was built

Go to the System i Access Family web page at:

www.ibm.com/systems/i/software/access/web/articles.html

- Find article written Jan/Feb 2003 entitled 'Build a Quick and Easy Web Site with iSeries Access for Web' (PDF version)
- Updated Oct 2006 in System i News 'Tailor iSeries Access for Web'

Weblog on CA/400

WebSphere

Build a quick and easy Web site with iSeries Access for Web

by Joe Vitale

You can build a quick and easy Web site for your company with the convenience, support, of iSeries Access for Web. The WebSphere Express Edition is a great way to get started. You can also use the Express Edition to create a Web site for your company. In this case, you also need to get used to your own set of applications with a user profile to access your Web site. Additionally, through iSeries Access for Web, there are also a number of other applications and data to be accessed and managed and, given with some well thought-out access over the Web.

Home page and template files

iSeries Access for Web ships a default home page. This page is designed to be your main page. The default home page is stored in the following location: /QIBMProdData/Access/WWW/HTML/homepage.html

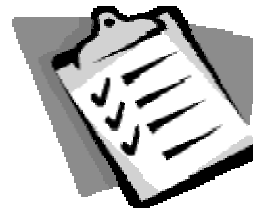
iSeries Access for Web also ships a set of template files. The template files are stored in the following location: /QIBMProdData/Access/WWW/HTML/templates. The location of the default home page is stored in the following location: /QIBMProdData/Access/WWW/HTML/homepage.html.

First of all, we need to create a new web page and a new template file. We do not need to modify or update the files in the /QIBMProdData/Access/WWW/HTML directory. We only need to create a new file in the /QIBMProdData/Access/WWW/HTML directory. We can do this by using the following command: `QIBMProdData/Access/WWW/HTML/homepage.html`



Different Ways to Rollout Access for Web

- Use 'out of the box'
- Use 'out of the box', but set up predefined functions
- Create your own 'window' to your system through Access for Web
- Use the WebSphere Portal solution



System i Access for Web has many entry points

'URL Interfaces to System i Access for Web' manual available on the web

<http://<myseries>/webaccess/iWAMain>

- Can enter at many different pages

- Can use navigation bar to move from function to function

<http://<myseries>/webaccess/iWA5250>



<http://<myseries>/webaccess/iWASpool>



Reduce functions you give to users



Reduce tabs that get displayed



Reduce options under tabs

Printer Output - Spoolfile

1. Print Tab

- User only has one option available, i.e. 'Printer output'

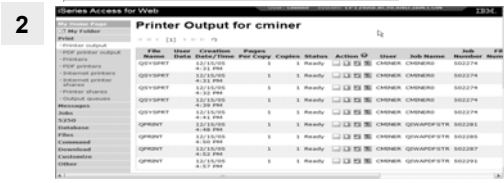
2. Default look of 'Printer Output'

3. Customized look of 'Printer Output' for signed on user

- Removed many of the columns of printer output
- Reordered list
- Removed several end user actions



1



2

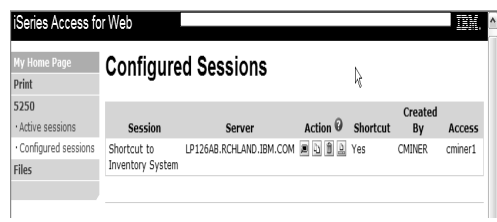
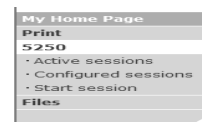


3

Run Pre-configured 5250 Sessions

You want to limit users to only starting 5250 sessions that you have preconfigured

- You have removed user's ability to configure a session
- User selects 'Configured Sessions'
 - Only one listed, only action user can perform is to 'start' it
- User clicks on Start



User can run 5250 application

User is placed in this application

- The session could be configured to include a macro to put the user directly into a specific application on the System i
 - Or on a menu screen
- Use CHGUSRPRF, LMTCPB=Yes to remove command line from user's screen



Change look of 5250 session

1. Default 'web' look

1



2. Changed colors, added keypad at side, changed buttons at bottom to words

4



2

3. Removed navigation bar, put keypad on top

3



4. Selected 'traditional' view, removed navigation bar



Work with Files in the IFS

- **Navigate and browse the directories located on your iSeries server integrated file system**
 - Don't need to map drives
 - Don't need to know directory structures



- **View, upload, and download files**
- **Copy and mail files**
- **Rename and delete files and directories**
- **Zip and unzip files and directories**
- **Edit authorities and change ownership of objects in the integrated file system**

Browse Files - 'Filtered View'

When I click on 'Browse Files', I see only a directory called 'cminer1' and its content

- **Because the administrator set a 'Default Directory' policy for me**

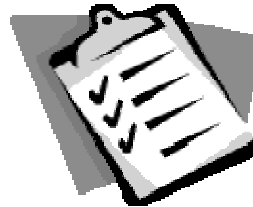
Actions I can perform:

- **Subdirectories: Create new ones, Rename, Work with**
- **Files: Copy, Rename, Delete, Mail, Work with (ie, Zip, Unzip, etc)**



Different Ways to Rollout System i Access for Web

- Use 'out of the box'
- Use 'out of the box', but set up predefined functions
- Create your own 'window' to your system through Access for Web

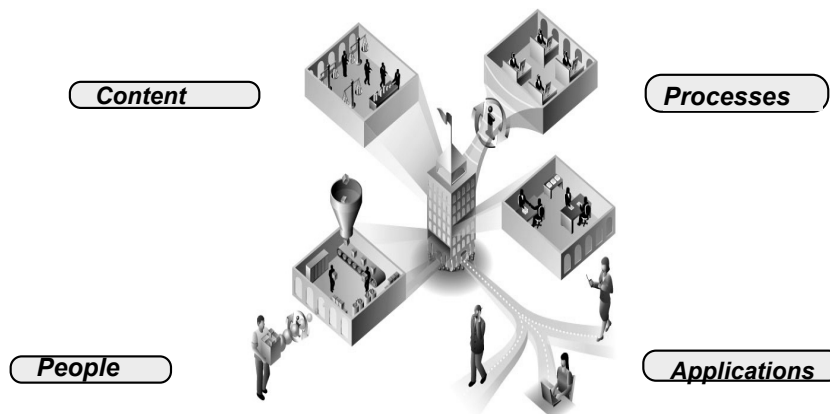


- Use the WebSphere Portal solution

Portal Solutions – the next wave in technology

For most organizations, the decision to invest in an enterprise portal is not a question of "if," but "when"?

(Craig Roth, VP META Group, 6/3/03)



Portal built on i5/OS

The screenshot shows a WebSphere Portal interface with the following components:

- Navigation:** Welcome, My Work, My Finances, My Newsroom, My iSeries, My Favorites.
- My Page:** Welcome to WebSphere Portal version 5.0. Includes instructions on rearranging portlets and creating new pages.
- Bookmarks:**
 - WebSphere Portal home
 - WebSphere Portal Zone
 - WebSphere Portal catalog
 - WebSphere Portal product documentation
 - WebSphere Portal support
 - WebSphere Portal offerings
- My Vertical News:**
 - "Iraq al-Qaeda link" - 15 Islamists are arrested in Spain**: A handcuffed suspect is led away by members of the Spanish Police following a raid against suspected members of a radical...
 - World News (includes photo)**:
 - "Iraq al-Qaeda link" - 15 Islamists are arrested in Spain
 - U.S. releases some Saddam-era detainees
 - Israel's Sharon suffers minor stroke
 - Baghdad hospital car bomb kills two
 - US News (includes photo)**:
 - Unrest in Congress over Bush's wiretaps
 - Secretary of State defends NSA spying
 - Time honors three who live to give
 - NYC transit strike begins
 - Market & Economy News**:
 - Auto shoppers get benefit of bargain
- My Stocks:**
 - Monday, December 19, 2005 1:31:00 PM EST
 - IBM: 83.48 (0.11, 0.1%)
 - SCOMPQ: 2,235.15 (-17.33, -0.7%)
 - SDII: 10,900.56 (24.97, 0.2%)
 - SSPX: 1,263.98 (-3.34, -0.2%)
 - Data delayed at least 20 minutes.
- My Weather:**
 - Monday, December 19, 2005 5:18:00 PM EST
 - Raleigh, North Carolina: 48° Partly Sunny
 - Stuttgart, Germany: 30° Snow
 - Beijing (Peking), China: 23° Partly Cloudy
 - Tokyo, Japan: 36° Clear

System i Access for Web Portlets on System i Portal

The screenshot shows a WebSphere Portal interface with the following components:

- Navigation:** Welcome, My Work, My Finances, My Newsroom, My iSeries, My Favorites.
- 5250 iFrame Portlets:** Files, Print, Database.
- Start Session Portlet:**
 - Server:** x1519p4.rchland.ibm.com
 - Port:** 23
 - Code page:** 37
 - Display HTML data in fields
 - Workstation ID:**
 - Use user ID
 - Specify workstation ID
 - Avoid duplicates for this user
 - Avoid duplicates with other users
 - Start Session** button
- Welcome:**
 - Welcome to the iSeries Access portlets - specifically developed for iSeries Access customers. These portlets allow you to access information on your iSeries servers through a Web browser.
 - iSeries Access portlets include the following:
 - 5250 portlet
 - Run commands and access full-screen 5250 character-based applications.
 - iFrame portlet
 - Access any of the iSeries Access for Web servlets using the iFrame portlet.
 - Integrated file system (IFS) browsing portlets
 - Browse the iSeries integrated file system.
 - View, edit, upload and download files.
 - Printers, printer output, and output queues portlets
 - View printer status, start and stop the writer job associated with a printer.
 - Hold, release, print, delete and view printer output files.
 - Move printer output files to another output queue or printer.
 - Hold and release output queues.
 - Database tables and SQL portlets
 - View database tables, add and update records.
 - View query results, customize format of results.
 - Run SQL statements dynamically.
 - Commands portlets
 - Run CL commands.
- Footer:** The iSeries Access portlets are included with iSeries Access for Web. The iSeries Access for Web product is part of the iSeries Access Family (5722-XW1). For more information regarding iSeries Access, iSeries Access for Web, and the iSeries Access...

Portlet Support added to System i Access for Web

V6R1	V5R4	V5R3 PTF SI11914 (May 2004)	V5R3 (Jan 2004)
<ul style="list-style-type: none"> • New portal application: "Standard portal application" <ul style="list-style-type: none"> – Written to the Java Specification Requests (JSR) 168 Portlet Specification – Strategic System i Access for Web portal offering • Original portlets, "IBM portal application," are still available 	<ul style="list-style-type: none"> • Single Sign-on (SSO) <ul style="list-style-type: none"> – Via WAS Security model – 5250 Bypass signon option • Database <ul style="list-style-type: none"> – OpenOffice spreadsheet format (.ods) – iSeries SQL Requests – Viewer to look at iSeries SQL results • Files <ul style="list-style-type: none"> – Zip function to zip files in IFS • iSeries Credentials <ul style="list-style-type: none"> – Users can change i5/OS password via System i Access for Web, and it will additionally update currently defined credentials with the new password value. 	<ul style="list-style-type: none"> • File • Print • Database • Command • Credentials • Related Links 	<ul style="list-style-type: none"> • 5250 • iFrame • Welcome

Different Ways to Rollout Access for Web

- Use 'out of the box'
- Use 'out of the box', but set up predefined functions
- Create your own 'window' to your system through Access for Web
- Use the WebSphere Portal solution



Control user access to functions



1. How do I keep my users from using all these functions?
2. How do I set up the environment for my users?
3. Should I let my users set have some individual screen settings for some functions?

You need *SECADM authority to customize profiles

System i Access for Web uses i5/OS User Profiles

When an System i Access for Web user attempts to access any function on the iSeries, the following sequence of checks are made to authenticate user access:

- User profile
- Group profile(s)
- *PUBLIC profile

*PUBLIC profile is the set of default policy settings shipped with Access for Web

- The defaults allow most functions to be available to all users

The settings in these policies indicate what functions within System i Access for Web, a user can attempt to use.

- For Example: Let's say you give users full access to the 'Database' tab.
- You have Object Level authority set up on your data
- When a user attempts to use one of the System i Access for Web Database GUIs to get at the database information, the user will get an i5/OS message indicating they are not authorized to access data

Customize → Policies

Policies are used to control access to System i Access for Web functions

For example:

- A Files access policy can be set to Deny or restrict a user or group from accessing the file function.
- Policies are saved and associated with the appropriate iSeries user or group profile.
- Each 'Category' expands for granular control

Action	Category	Description	Access
S250	S250	S250 user interface custom settings.	Allowed
Database	Command	Run batch command custom settings.	Allowed
Files	Customize	Preferences and policy administration custom settings.	Allowed
Command	Database	Database tables, requests, and run SQL custom settings.	Allowed
Download	Database connections	Create and edit database connection definitions.	Allowed
Customize	Download	Download packages custom settings.	Allowed
- Preferences	Files	Integrated file system and file share custom settings.	Allowed
- Policies	General	Page layout, language and character set custom settings.	Allowed
- Settings	Jobs	Work with jobs custom settings.	Allowed
- Transfer configuration	Mail	Send mail custom settings.	Allowed
Other	Messages	Display messages, send messages, and message queue custom settings.	Allowed
Related Links:	My Folder	My Folder custom settings.	Allowed
- iSeries Access for Web	Print	Printer output, printers, printer shares and output queue custom settings.	Allowed
- iSeries Access	Sametime	Lotus Sametime custom settings.	Allowed
- iSeries Navigator	Other	Change password and other miscellaneous custom settings.	Allowed
- iSeries Information			

Policies - customize for all users at once

One alternative...



Use the *PUBLIC group profile and set policies for all users

- 'Deny' functions for all users in a single step
- Then 'Allow' specific users access to functions via their User or Group profiles

Problem:

You're locked out too, until you go in and "Allow" functions to yourself

Action	Category	Description	Access
S250	S250	S250 user interface custom settings.	Allowed
Database	Command	Run batch command custom settings.	Allowed
Files	Customize	Preferences and policy administration custom settings.	Allowed
Command	Database	Database tables, requests, and run SQL custom settings.	Allowed
Download	Database connections	Create and edit database connection definitions.	Allowed
Customize	Download	Download packages custom settings.	Allowed
- Preferences	Files	Integrated file system and file share custom settings.	Allowed
- Policies	General	Page layout, language and character set custom settings.	Allowed
- Settings	Jobs	Work with jobs custom settings.	Allowed
- Transfer configuration	Mail	Send mail custom settings.	Allowed
Other	Messages	Display messages, send messages, and message queue custom settings.	Allowed
Related Links:	My Folder	My Folder custom settings.	Allowed
- iSeries Access for Web	Print	Printer output, printers, printer shares and output queue custom settings.	Allowed
- iSeries Access	Sametime	Lotus Sametime custom settings.	Allowed
- iSeries Navigator	Other	Change password and other miscellaneous custom settings.	Allowed
- iSeries Information			

Example: Set Policy to Default to Specific Directory in IFS

Set a 'Default Directory' for:

- ***PUBLIC**
- **Groups of users**
- **Specific user**



In this example, I went into CMINER1 profile, and set policy to show only the 'CMINER1' directory to this user...



System i Access for Web 5250 Interface

Runs as an interactive job

- Only function in System i Access for Web that is interactive

TN5250 port

- Only function in System i Access for Web that uses TN5250 port

Use “Start Session” Dynamically

- Specify the system to connect
- Select the session attributes
 - Port, code page, workstation ID, etc.
- Start session

Start a Configured Session

- Configured sessions list shows the list of sessions for the logged in user
- Select the “Start” icon for the session to start

Session	Server	Action	Shortcut	Created By	Access
system A	LP016AB.RCHLAND.IBM.COM	[Start] [Stop] [Refresh] [Help]	No	smshao	smshao
system B	LP016AB.RCHLAND.IBM.COM	[Start] [Stop] [Refresh] [Help]	No	smshao	smshao

[Configure new session](#)
 Configure a new session.

[Shortcuts to sessions you configured](#)
 Display a list of shortcuts to sessions you configured. Shortcuts can be deleted from this list.

[Active sessions](#)
 Work with your active sessions.

[Start session](#)
 Start a new session.

[My macros](#)
 Work with your macros.

[My keypads](#)
 Work with your keypads.

Run Pre-Configured 5250 Sessions

You can limit users to connecting to only specific systems or running only specific applications.

http://<system>:<port>/webaccess/iWAMain

- Create preconfigured 5250 sessions
- Then set policies to restrict users to only preconfigured sessions
- User selects 'Configured Sessions'
 - Only link provided
 - User has only one action → to start a session

Session	Action	Shortcut	Created By	Access
Shortcut to demo	[Start] [Stop] [Refresh] [Help]	Yes	smshao	*PUBLIC
Shortcut to Payroll	[Start] [Stop] [Refresh] [Help]	Yes	omier	*PUBLIC

[Start session](#)
 Start a new session.

[My macros](#)
 Work with your macros.

[My keypads](#)
 Work with your keypads.

[View help for acting with configured sessions.](#)



System i Access for Web – Database Functions

Access database tables on your iSeries server with iSeries Access for Web.

Tables

- View a list of database tables on your iSeries server.
- Perform actions on these tables without having knowledge of SQL and its syntax.
- View the contents of a table in a paged list, using the Quick view action.
- Add and update records in a table using the Insert and Update actions.
- Create your own customized SQL request for a table using the Run SQL action.
- Create your own customized copy data request for a table using the Copy data to table action.

My requests

- View a list of previously saved requests.
- Run or Edit requests from this list.
- Manage lists using the Copy, Delete, and Rename actions
- Create and manage shortcuts to requests

Run SQL

- Run SQL statements dynamically.
- View output as a paged list or in a popular file format, like Microsoft Excel or Lotus 1-2-3. (Output format depends on how you have your browser configured and whether the browser can locate a plug-in for the output type you choose.)
- Customize how data is returned by setting options specific to the output type.
- Build SELECT statements using an SQL Wizard.
- Save requests for repeated use.

Copy data to table

- Copy existing data files from your PC to a database table on your iSeries server.
- These data files can be in many popular file formats, including Microsoft Excel and Lotus 1-2-3.
- Replace the contents of a table or add data to an existing table.
- Create a new database table based on the contents of a workstation file.
- Save requests for repeated use.

Import request

- Import Client Access Data Transfer upload and download requests into iSeries Access for Web copy data and SQL requests.
- Imported requests are automatically converted to iSeries Access for Web format.
- Run and edit converted requests on your iSeries server just like other copy data and SQL requests.

Import query

- Import queries generated by Query for iSeries and DB2 UDB for iSeries Query Manager.
- Imported queries can be saved into iSeries Access for Web database requests.
- Run and edit converted queries on your iSeries server just like iSeries Access for Web SQL requests.

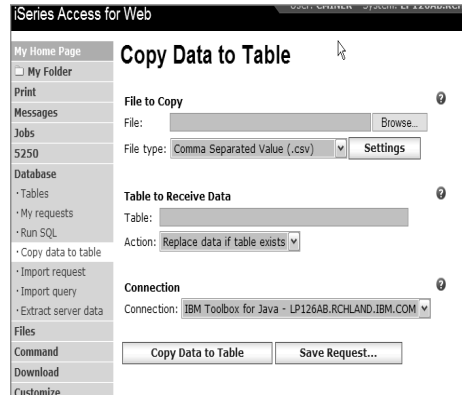
Extract server data

- Extract server object information into a database table.

Upload PC Data to the System i



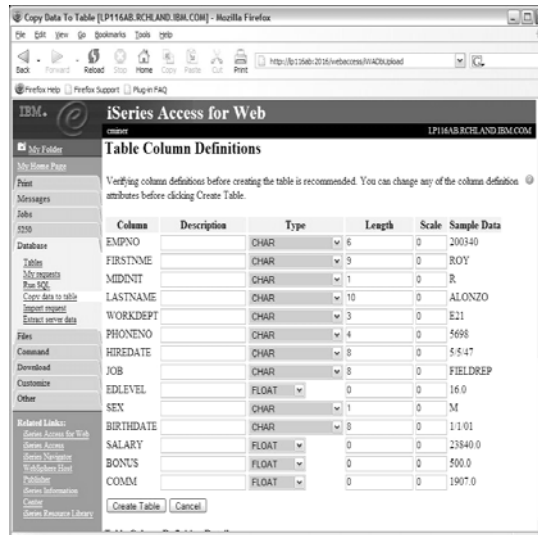
- Upload data from a variety of file types
 - Excel, XML, Lotus, etc
 - OpenOffice new V5R4
- Put into iSeries database
 - 'Replace' contents of table
 - 'Append' to existing data
- If no table exists on the iSeries, you will get a wizard to help you create a new table



Create System i Table



Wizard to help you create an iSeries table from your PC spreadsheet



Database Tables

You can:

- Insert
- Update
- Quick View
- Find (new V5R4)
- Run SQL
- Copy Data to Table

Table	Description	Action
BOATS.BOATS	Available BOATS	[Icons]
BOATS.BOATS1	Available boats by length	[Icons]
BOATS.PCFILES	PC files needed by BOATS WSG Demo	[Icons]
BOATS.QCLSRC		[Icons]
BOATS.QCMDSRC		[Icons]
BOATS.QDQSSRC		[Icons]
BOATS.QRNCVTLG		[Icons]
BOATS.QRPGESRC		[Icons]
BOATS.QRPGSRC		[Icons]
QGPL.#	\$	[Icons]
QGPL.BITYPES		[Icons]
QGPL.CHADDEC		[Icons]
QGPL.CONCURTYPE		[Icons]
QGPL.CPY_INFO		[Icons]
QGPL.DAVE		[Icons]
QGPL.DECSEP		[Icons]
QGPL.DIVZERO		[Icons]
QGPL.DIVZERO2		[Icons]
QGPL.DSD		[Icons]
QGPL.DSPFWRSC	Output file for DSPFWRSC	[Icons]

Download Database Information from System i

Run SQL allows you to run SQL statements

- Could copy/paste complex SQL statements in here...



SQL Wizard if you don't know SQL

Variety of output types

- PDF, Excel, 1-2-3, XML, etc

Destination

- Browser
- Mail as attachment
- Personal Folders
- IFS (new V5R4)

Can save request

- My Requests, Give Shortcut to others

```

SELECT *
FROM BOATS.BOATS
WHERE ( 'BCOST' > 10000 )
    
```

SQL Wizard

SQL Output

Type: Microsoft Excel XML (.xml) Settings

Destination: Mail as attachment Settings

Format

Date: 12/23/05

Time: 10:16:44 AM

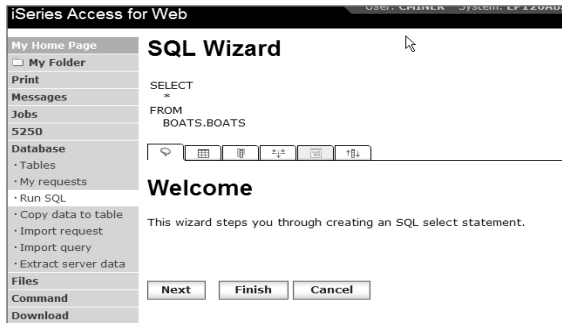
Connection: IBM Toolbox for Java - RCHLAND.IBM.COM

Run SQL Save Request...

Create Database Requests with SQL Wizard

SQL Wizard enables you to:

- Select tables
- Select which columns to return
- Add conditions to your select statement
- Select the columns by which you want the data sorted



New in V6R1! Chart SQL Results: Background

- System i Access for Web provides support to run SQL statements and store the results in a selected file format
- Historical supported file formats include:
 - HTML
 - Microsoft Excel
 - PDF
 - OpenDocument



A	B	C	D	E	F	G	H	I	J	K	
1	POSSUM	STIAM	PAI	STREET	CITY	STATE	ZIPCODE	COTLMT	OHGOOD	BALDUE	COTDUE
2	338472	Herring	G.K.	4889 Elm	Dallas	TX	75217	5000	3	37	0
3	820293	Jones	B.D.	218 W 1 st City	NY		10041	400	1	100	0
4	392859	Vine	S.S.	PO Box 71	Bruton	VT	5646	700	1	439	0
5	938489	Johnson	J.A.	3 Alpine	Helen	GA	30545	9999	2	3987	33.5
6	297291	Tyres	W.E.	13 Myrtle	Hector	NY	14841	1000	1	0	0
7	389572	Stevens	K.L.	208 Snow	Denver	CO	80226	400	1	58.75	1.5
8	846283	Alston	J.S.	787 Lake	Elgin	MI	48542	5000	3	10	0
9	475938	Doe	J.W.	69 Archer	Butler	CA	95686	700	2	250	100
10	693829	Thomas	A.H.	3 Dove	Chicopee	WY	82509	9999	2	0	0
11	583029	Volkmann	E.O.	489 562	Dallas	TX	75218	200	1	20	0
12	192837	Lee	F.L.	5963 Oak	Hector	NY	14841	700	2	489.5	0.5
13	587999	Abraham	M.T.	292 Mill	State	MI	48342	9999	3	0	0

CUSID	STNAM	DIS	STREET	CITY	STATE	ZIPCODE	COTLMT	OHGOOD	BALDUE	COTDUE
818472	Herring	G.K.	4889 Elm Ave	Dallas	TX	75217	5000	3	37.00	0.00
818489	Jones	B.D.	218 W 1st City	NY		10041	400	1	100.00	0.00
818493	Vine	S.S.	PO Box 71	Bruton	VT	5646	700	1	439.00	0.00
818488	Johnson	J.A.	3 Alpine Way	Helen	GA	30545	9999	2	3987.00	33.50
818491	Tyres	W.E.	13 Myrtle Ave	Hector	NY	14841	1000	1	0.00	0.00
818497	Stevens	K.L.	208 Snow Dr	Denver	CO	80226	400	1	58.75	1.50
818492	Alston	J.S.	787 Lake Blvd	Elgin	MI	48542	5000	3	10.00	0.00
818494	Doe	J.W.	69 Archer St	Butler	CA	95686	700	2	250.00	100.00
818495	Thomas	A.H.	3 Dove Circle	Chicopee	WY	82509	9999	2	0.00	0.00
818496	Volkmann	E.O.	489 562 St	Dallas	TX	75218	200	1	20.00	0.00
818497	Lee	F.L.	5963 Oak St	Hector	NY	14841	700	2	489.00	0.00
818498	Abraham	M.T.	292 Mill St	State	MI	48342	9999	3	0.00	0.00

Chart SQL results: SVG File Format

- Support for new output file type in V6R1
 - Scalable Vector Graphics Chart (*.svg)
 - Language for describing 2D graphics in XML
 - W3C standard
 - Users can store SQL results in a chart

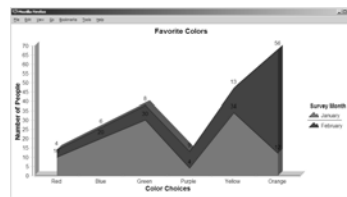
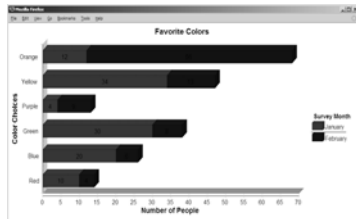
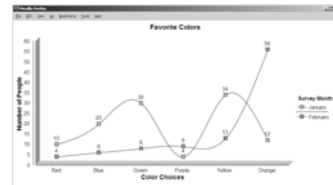


Chart SQL Results: SVG Configuration

- Many configuration options
 - Chart type
 - Area, Bar, Pie, Line
 - Colors
 - Legend location
 - Grid shown
 - Chart type options
 - Bar – vertical or horizontal
 - Pie – exploded or complete
 - Line – marker shape
 - Other....
- Same destination options:
 - Browser, mail, IFS, personal folder



Database - Run Requests



Administrator could:

- Give users or groups of users some database requests that were created for them.
- Users can run only these specific requests
- No other database options offered

iSeries Access for Web

My Home Page | My Requests

5250 [1] [] [] [] [] []

Database

- My requests

Request	Description	Action	Shortcut	Created By	Access
Shortcut to Boats For Sale	View all available boats		Yes	CMINER	groupa
Shortcut to Find Boat To Buy	Select type and price limits		Yes	CMINER	*PUBLIC
Shortcut to My Customers Mailing	Mail Customer List		Yes	CMINER	groupa
Shortcut to My Customers Mailing	Mail Customer List		Yes	cmminer	cmminer1
Shortcut to Put My Customer List in Folder	Store Customer List		Yes	CMINER	groupa
Shortcut to request sql			Yes	secycesi	*PUBLIC
Shortcut to request upload			Yes	secycesi	*PUBLIC

Related Links:

- iSeries Access for Web
- iSeries Access
- iSeries Navigator
- iSeries Information Center
- iSeries Resource Library

Printing



Work with Printer Output, Printers, Queues

Typical end user printer tasks

- Printer Output
- PDF Printer Output



Tasks more oriented toward system operators, administrators, programmers, etc

- Printers
- PDF Printers
- Internet Printers
- Internet Printer Shares
- Printer Shares
- Output Queues



Work with Printer Output

<http://<myseries>/webaccess/iWASpool>

My 'printer output'

Actions include:

- Work with
- View
- View As
- View PDF

Easy-to-use GUI for working with my printer output

- Don't need to sign onto a 5250 session, and run commands to get to spool file

File Name	User	Creation Date/Time	Pages Per Copy	Copies	Status	Action	User	Job Name	Job Number	File
QSYSRPT		12/15/05 4:31 PM	1	1	Ready	[Icons]	CMNER	CMNER0	502274	
QSYSRPT		12/15/05 4:31 PM	1	1	Ready	[Icons]	CMNER	CMNER0	502274	
QSYSRPT		12/15/05 4:32 PM	1	1	Ready	[Icons]	CMNER	CMNER0	502274	
QSYSRPT		12/15/05 4:39 PM	1	1	Ready	[Icons]	CMNER	CMNER0	502274	
QPRINT		12/15/05 4:41 PM	1	1	Ready	[Icons]	CMNER	QIWAPOFSTR	502281	
QPRINT		12/15/05 4:48 PM	1	1	Ready	[Icons]	CMNER	QIWAPOFSTR	502285	
QPRINT		12/15/05 4:50 PM	1	1	Ready	[Icons]	CMNER	QIWAPOFSTR	502287	
QPRINT		12/15/05 4:52 PM	1	1	Ready	[Icons]	CMNER	QIWAPOFSTR	502287	
QPRINT		12/15/05 4:57 PM	1	1	Ready	[Icons]	CMNER	QIWAPOFSTR	502291	

Note: IBM Infoprint Server (57xx-IP1) is NOT needed to use "View PDF"

Printer Output - Spoolfile

1. Requested 'View PDF'

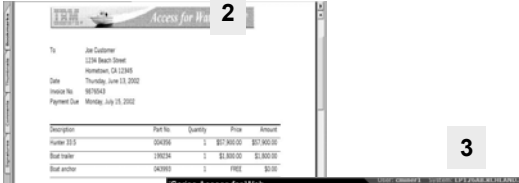
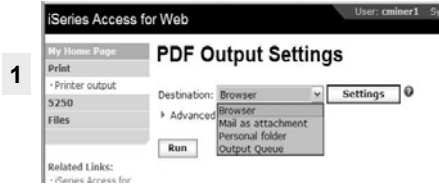
- Can select any option on pulldown for my printer output

2. View in Browser

- Shows overlays, etc
- Can print on any printer in network

3. Send .PDF document in an email

- Mail server does not have to be installed on iSeries



PDF Printer Output

<http://<myiseries>/webaccess/iWAPDFPrinterOutput>

Printer output automatically converted to PDF and placed in PDF Printer Output Queue at spool time

Actions include:

- View
- Copy to File
- Copy to Folder;
- Delete
- Mail

Actual host application could additionally send spooled file to another output queue (in SCS or AFP mode)

File Name	File Number	User	Creation Date/Time	Job Name	Job Number	Action
QVSPRT	5	JOANSG	4/7/05	QPR7JOB	064814	[View] [Copy] [Mail]
QVSPRT	1	CLARKD	4/27/05	QPADEV0018	115207	[View] [Copy] [Mail]
QVSPRT	2	CLARKD	4/27/05	QPADEV0018	115207	[View] [Copy] [Mail]
QVSPRT	1	CLARKD	5/2/05	QPADEV0012	122000	[View] [Copy] [Mail]
QVSPRT	2	CLARKD	5/2/05	QPADEV0012	122000	[View] [Copy] [Mail]
QVSPRT	3	CLARKD	5/2/05	QPADEV0012	122000	[View] [Copy] [Mail]
QVSPRT	4	CLARKD	5/2/05	QPADEV0012	122000	[View] [Copy] [Mail]
QVSPRT	5	CLARKD	5/2/05	QPADEV0012	122000	[View] [Copy] [Mail]
QVSPRT	6	CLARKD	5/2/05	QPADEV0012	122000	[View] [Copy] [Mail]
COVER_PAGE	11	GILBERTM	11/1/05	QPR7JOB	287159	[View] [Copy] [Mail]
BGL_3812	12	GILBERTM	11/1/05	QPR7JOB	287159	[View] [Copy] [Mail]
BGL_3812	13	GILBERTM	11/1/05	QPR7JOB	287159	[View] [Copy] [Mail]
BGL_3812	14	GILBERTM	11/1/05	QPR7JOB	287159	[View] [Copy] [Mail]
BOX_3812	15	GILBERTM	11/1/05	QPR7JOB	287159	[View] [Copy] [Mail]
HRZ_3812	16	GILBERTM	11/1/05	QPR7JOB	287159	[View] [Copy] [Mail]
HRZ_3812	17	GILBERTM	11/1/05	QPR7JOB	287159	[View] [Copy] [Mail]
HRZ_3812	19	GILBERTM	11/1/05	QPR7JOB	287159	[View] [Copy] [Mail]

Note: IBM Infoprint Server (57xx-IP1) needed to use "PDF Printer Output" and "PDF Printers"

Commands



Run CL Commands

1 Search for Command



2 Then Run Command



My Commands

User can run a command, then Save it

- Commands can be saved by running the Save action for a command that was run in the current browser session.

Then next time they could simply select My Commands and run the previously saved commands

Name	Command	Output	Action	Last Accessed
Restore User Profiles	QSYS/RSTUSRPRF	My folder	[Icons]	12/21/05 3:42 PM
Work with Active Jobs	wrkactjob	Browser	[Icons]	12/21/05 3:45 PM
Work with Query Manager	QSYS/WRKQMQRY QMQRY (*LIBL/*ALL)	Browser	[Icons]	12/21/05 3:44 PM



Jobs / Server Jobs for end user

iSeries Access for Web User: cminer System: LP126AB.RCHLAN

My Home Page: **Jobs for cminer**

My Folder

Print

Messages

Job	Status	Type	Entered System	Action
CMINER2	Suspended	Interactive	12/21/05 11:38:41 AM	[H] [S] [E] [D] [P]
CMINER3	Suspended	Interactive	12/21/05 12:51:09 PM	[H] [S] [E] [D] [P]
CMINER4	Suspended	Interactive	12/21/05 12:52:14 PM	[H] [S] [E] [D] [P]
SZ50	Suspended	Interactive	12/21/05 12:55:01 PM	[H] [S] [E] [D] [P]
Database	Suspended	Interactive	12/21/05 1:39:01 PM	[H] [S] [E] [D] [P]
Files	Suspended	Interactive	12/21/05 1:39:01 PM	[H] [S] [E] [D] [P]

Command: [1] [P] [D] [E] [F]

Download

Customize: [Jobs preferences](#)

Other: [Customize job list preferences](#)

- Actions Include
- Hold Job
- Delete/End Job
- View Job Log
- Printer Output
- View Job Log Properties

- Actions Include
- Hold Job
- Delete/End Job
- View Job Log
- View Job Properties

iSeries Access for Web 12/21/05 1:39:01 PM

My Home Page: **Server Jobs for cminer**

My Folder

Print

Messages

Job	Detailed Status	Server	Action	Run Priority	Thread Count
QZPCSRV3	Waiting for time interval	Network Print Server	[H] [S] [E] [D] [P]	20	1
QZPCSRV3	Waiting for time interval	Remote Command Server	[H] [S] [E] [D] [P]	20	1
QZPCSRV3	Waiting for time interval	Remote Command Server	[H] [S] [E] [D] [P]	20	1
QZPCSRV3	Running	Remote Command Server	[H] [S] [E] [D] [P]	20	1
QZPCSRV3	Waiting for time interval	Central Server	[H] [S] [E] [D] [P]	20	1
QZPCSRV3	Waiting for time interval	Central Server	[H] [S] [E] [D] [P]	20	1

Related Links: [iSeries Access for](#)

Messages

iSeries Access for Web

My Home Page: **Messages**

My Folder

Print: Access messages on your iSeries server with iSeries Access for Web.

Messages

- Display messages
- Send message
- Send break message
- Operator messages
- Message queues

Jobs

SZ50

Database

Files

Command

Download

Customize

Other

Display messages

- Display, answer and manage messages in the message queue for the logged on user.

Send message

- Send a message to users and message queues.

Send break message

- Send a Sametime announcement to iSeries Access for Web Sametime users.
- Send a break message to iSeries work stations.

Operator messages

- Display, answer and manage messages in the system operator message queue.

Message queues

- List message queues on the iSeries server.
- Select, display and manage messages in message queues.

- Display Messages
- Send Message
- Send Break Message
- Operator Messages
- Message Queues

iSeries Access for Web 12/21/05 1:39:01 PM

My Home Page: **Message Queues**

My Folder

Print

Messages

Message Queue	Description	Action
BEACH Build Status message queue	BEACH Build Status message queue	[H] [S] [E] [D] [P]
BEACH Build Failure message queue	BEACH Build Failure message queue	[H] [S] [E] [D] [P]
BEACH Build Success message queue	BEACH Build Success message queue	[H] [S] [E] [D] [P]
BLDAVA Build Failure message queue	BLDAVA Build Failure message queue	[H] [S] [E] [D] [P]
BLDAVA Build Success message queue	BLDAVA Build Success message queue	[H] [S] [E] [D] [P]
BLDAVA Build Failure message queue	BLDAVA Build Failure message queue	[H] [S] [E] [D] [P]
BLDAVA Build Success message queue	BLDAVA Build Success message queue	[H] [S] [E] [D] [P]
BLDAVA Build Failure message queue	BLDAVA Build Failure message queue	[H] [S] [E] [D] [P]
BLDAVA Build Success message queue	BLDAVA Build Success message queue	[H] [S] [E] [D] [P]
BLDNDP Build Failure message queue	BLDNDP Build Failure message queue	[H] [S] [E] [D] [P]
BLDNDP Build Success message queue	BLDNDP Build Success message queue	[H] [S] [E] [D] [P]
BLDNDP Build Failure message queue	BLDNDP Build Failure message queue	[H] [S] [E] [D] [P]
BLDNDP Build Success message queue	BLDNDP Build Success message queue	[H] [S] [E] [D] [P]
BLDTEST Build Failure message queue	BLDTEST Build Failure message queue	[H] [S] [E] [D] [P]
BLDTEST Build Success message queue	BLDTEST Build Success message queue	[H] [S] [E] [D] [P]
BLDTEST Build Failure message queue	BLDTEST Build Failure message queue	[H] [S] [E] [D] [P]
BLDTEST Build Success message queue	BLDTEST Build Success message queue	[H] [S] [E] [D] [P]

Related Links: [iSeries Access for](#)

My Folder



My Folder

Folder resides in the IFS

- Folder does not show up in IFS directory listing
- Administrator can control size of Folders (new in V5R3)

Folder can only be accessed by owner

- Good for long-running requests (ie, actions performed asynchronously so the browser is not tied up)
- An easy way to avoid large attachments (ie, a large query result)

Can place information in other users' Folders

- Performing requests for someone else
- Mechanism for workflow.

Combine e-mail and My Folder functions to:

- Perform requests for someone else
- Distribute results to a group of users
- Send e-mail to others when you place information in their Folder
- Be notified when new items are placed in your Folder

Simply click on 'My Folder' to see items

- Can store items
email them,
delete them, etc



- Do not need to understand any Directory structure to put information in My Folder or another's Folder

Series Access for Web

My Folder

Item	Status	From	Date/Time	Size	Action
<input type="checkbox"/> Status [SQL output in PDF]	Unopened	CMISER	12/12/05 6:08 PM	202	[Print] [View] [Delete] [Refresh]
<input type="checkbox"/> SQL output in PDF	Unopened	CMISER	12/12/05 6:08 PM	2543	[Print] [View] [Delete] [Refresh]
<input type="checkbox"/> Status [SQL output in PDF]	Unopened	CMISER	12/12/05 6:04 PM	202	[Print] [View] [Delete] [Refresh]
<input type="checkbox"/> SQL output in PDF	Opened	CMISER	12/12/05 6:04 PM	2543	[Print] [View] [Delete] [Refresh]
<input type="checkbox"/> Status: SQL output to Integrated File System	Unopened	CMISER	12/12/05 5:39 PM	272	[Print] [View] [Delete] [Refresh]
<input type="checkbox"/> Status: SQL output to Integrated File System	Unopened	CMISER	12/12/05 5:35 PM	271	[Print] [View] [Delete] [Refresh]
<input type="checkbox"/> Status [SQL output in HTML]	Unopened	CMISER	12/9/05 4:52 PM	202	[Print] [View] [Delete] [Refresh]
<input type="checkbox"/> SQL output in HTML	Opened	CMISER	12/9/05 4:52 PM	816	[Print] [View] [Delete] [Refresh]
<input type="checkbox"/> Status [SQL output in XLS]	Unopened	CMISER	12/8/05 4:35 PM	297	[Print] [View] [Delete] [Refresh]
<input type="checkbox"/> SQL output in XLS	Opened	CMISER	12/8/05 4:35 PM	3956	[Print] [View] [Delete] [Refresh]

Delete Selected Items

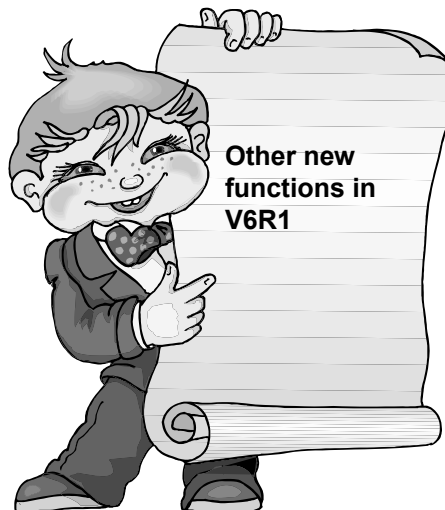
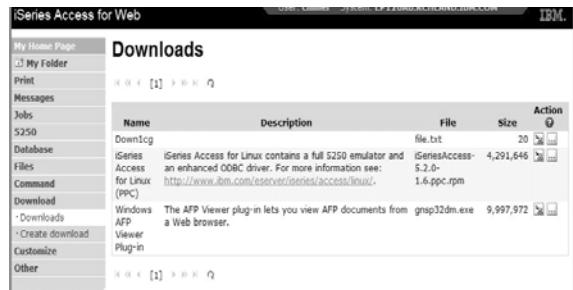
Downloads



Downloads – for file/program distribution

http://<myiseries>/webaccess/iWAPackages

- Mechanism to distribute files / programs to users
- Administrator can create downloads
- Management functions included for updating downloads and for controlling access to them



New in V6R1! Single sign-on via Windows domain login – V6R1

- WAS 6.1 provides a trust association interceptor (TAI) that uses the Simple and Protected GSS-API Negotiation Mechanism (SPNEGO) to securely negotiate and authenticate HTTP requests for secured resources in WAS.
 - This uses kerberos authentication.
 - The SPNEGO TAI enables Windows domain login to be used when granting access to secure resources in WAS.
- When V6R1 System i Access for Web is configured in a SPNEGO TAI environment, the Windows workstation user can login to the Windows domain and have Access for Web use those credentials to authenticate to i5/OS

New in V6R1! Schedule tasks: Create automated task as a .jar file

The screenshots illustrate the following steps:

1. Build the request and save it
2. Select "schedule the task"
3. Create (define) the task
4. Completed automated task definition
5. Review Database help to determine how to run the scheduled task

The screenshots show the 'My Requests' table, the 'Create Automated Task' dialog box, and the 'Create Automated Task' confirmation screen.

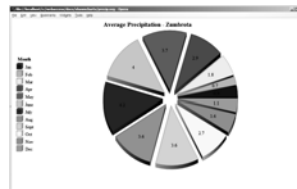
Summary



System i Access for Web V6R1 Enhancements



- Single sign-on: support authentication using Windows domain login
- Chart SQL results in bar, area, line, or pie chart
- SQL wizard supports joins of multiple tables
- Automation and scheduling of tasks
- JSR 168 Portlets



Functional enhancements can be submitted via the FITS system. The url is:
<http://www.ibm.com/systems/i/software/access/>

And click on link "[Request for Design Change](#)"

Why use System i Access for Web?

Start simple, grow fast...

- Any System i customer -- with any hardware model - can quickly get started working in a Web environment
 - ▶ If their system is not capable to running WAS, they can easily install the ASF Tomcat web application server. ASF Tomcat runs on hardware with 70 CPW and 256 MB memory
- Any System i customer -- with little Web experience - can easily get started working with e-business
 - ▶ System i Access for Web is simple to install and configure
 - ▶ No programming skills required to set it up
- Any System i customer -- without training or setup on users' desktops - can extend the reach of their resources to end users
 - ▶ Use customize facility to set up view ('window') to System i and to control access to various i5/OS resources
 - all built around i5/OS user profiles

*A great first
step to get
System i
into e-
business*



*Use 'out of
the box'*

Additional Information

- System i Access Home page:
 - <http://www.ibm.com/systems/i/software/access>
- System i Access for Web Home page:
 - <http://www.ibm.com/systems/i/software/access/web/>
- Demo of System i Access for Web:
 - <http://iseriesd.demos.ibm.com/webaccess/iWAHome>



Trademarks and Disclaimers

© IBM Corporation 1994-2008. All rights reserved.

References in this document to IBM products or services do not imply that IBM intends to make them available in every country.

The following terms are trademarks of International Business Machines Corporation in the United States, other countries, or both:
IBM, IBM (logo), I5/OS, IBM i, System i, AS/400, iSeries, OS/400

Rational is a trademark of International Business Machines Corporation and Rational Software Corporation in the United States, other countries, or both.
Intel, Intel Logo, Intel Inside, Intel Inside logo, Intel Centrino, Intel Centrino logo, Celeron, Intel Xeon, Intel SpeedStep, Itanium, and Pentium are trademarks or registered trademarks of Intel Corporation or its subsidiaries in the United States and other countries.

Linux is a trademark of Linus Torvalds in the United States, other countries, or both.

Microsoft, Windows, Windows NT, and the Windows logo are trademarks of Microsoft Corporation in the United States, other countries, or both.

UNIX is a registered trademark of The Open Group in the United States and other countries.

Java and all Java-based trademarks are trademarks of Sun Microsystems, Inc. in the United States, other countries, or both.

Other company, product or service names may be trademarks or service marks of others.

Information is provided "AS IS" without warranty of any kind.

All customer examples described are presented as illustrations of how those customers have used IBM products and the results they may have achieved. Actual environmental costs and performance characteristics may vary by customer.

Information concerning non-IBM products was obtained from a supplier of these products, published announcement material, or other publicly available sources and does not constitute an endorsement of such products by IBM. Sources for non-IBM list prices and performance numbers are taken from publicly available information, including vendor announcements and vendor worldwide homepages. IBM has not tested these products and cannot confirm the accuracy of performance, capability, or any other claims related to non-IBM products. Questions on the capability of non-IBM products should be addressed to the supplier of those products.

All statements regarding IBM future direction and intent are subject to change or withdrawal without notice, and represent goals and objectives only. Contact your local IBM office or IBM authorized reseller for the full text of the specific Statement of Direction.

Some information addresses anticipated future capabilities. Such information is not intended as a definitive statement of a commitment to specific levels of performance, function or delivery schedules with respect to any future products. Such commitments are only made in IBM product announcements. The information is presented here to communicate IBM's current investment and development activities as a good faith effort to help with our customers' future planning.

Performance is based on measurements and projections using standard IBM benchmarks in a controlled environment. The actual throughput or performance that any user will experience will vary depending upon considerations such as the amount of multiprogramming in the user's job stream, the I/O configuration, the storage configuration, and the workload processed. Therefore, no assurance can be given that an individual user will achieve throughput or performance improvements equivalent to the ratios stated here.

Photographs shown are of engineering prototypes. Changes may be incorporated in production models.