



IBM System i™

Session: **03B**

## 2007 System i and AS/400 Series Connection Conference

### iSeries Access for Windows – What's New in V5R4

Carole A Miner  
IBM Rochester, Mn  
[cminer@us.ibm.com](mailto:cminer@us.ibm.com)

*i want stress-free IT.  
i want control.  
i want an i.*

© Copyright IBM Corporation, 2007. All Rights Reserved.  
This publication may refer to products that are not currently  
available in your country. IBM makes no commitment to make  
available any products referred to herein.

IBM System i



## Requirements?

**Would you like to see some other features in System i Access  
for Windows?**

**Please submit requests for enhancements via the FITS system.**

**The url is:**

**<http://www.ibm.com/eserver/series/access/>  
And click on link "Request for Design Change"**



*This really helps  
development get new  
functions into the  
planning process*

2

*i want an i.*

© 2007 IBM Corporation

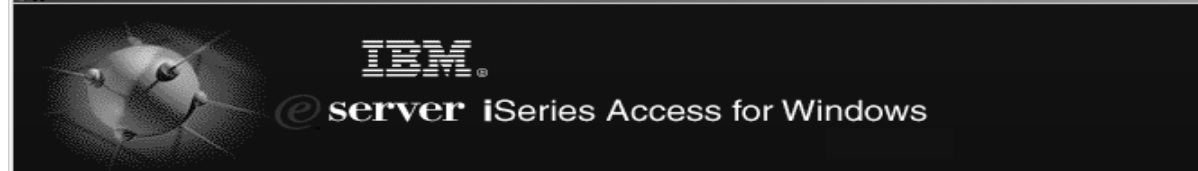
## Abstract

If you are a veteran iSeries Access for Windows user and want to find out what new functions have been added, then come to this session.

Come hear the enhancements that have been added in the areas of 5250 emulation, data transfer, file serving, application development, and much more.

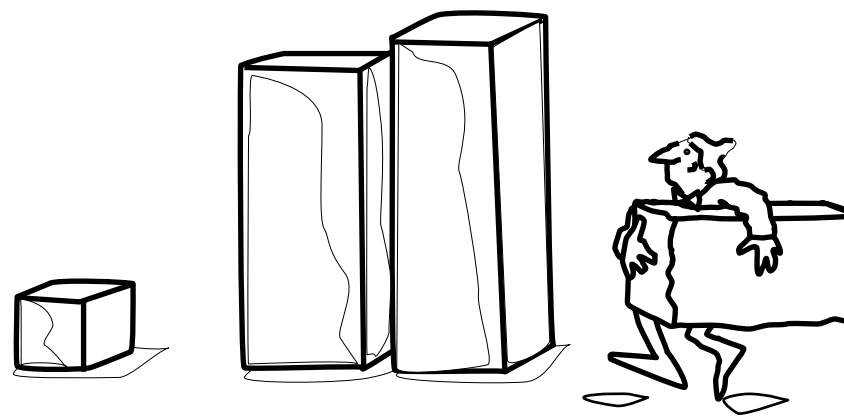
## Product Information

IBM iSeries Access for Windows



Product Number	Version Release	Date Available	IBM Technical Support End
5722-XE1	V4R4M0	May 1999	05/31/2001
5722-XE1	V4R5M0	Aug 2000	12/31/2002
5722-XE1	V5R1M0	May 2001	09/30/2005
5722-XE1	V5R2M0	Aug 2002	04/30/2007
5722-XE1	V5R3M0	June 2004	12 months notice will be given prior to termination of support
5722-XE1	V5R4M0	Feb 2006	12 months notice will be given prior to termination of support

## Packaging & Ordering



## iSeries Access Family Packaging

V5R4 5722-XW1 iSeries Access Family	V5R3 5722-XW1 iSeries Access Family
<ul style="list-style-type: none"> <li>• iSeries Access for Windows, 5722-XE1, V5R4</li> </ul>	<ul style="list-style-type: none"> <li>• iSeries Access for Windows, 5722-XE1, V5R3</li> </ul>
<ul style="list-style-type: none"> <li>• iSeries Access for Web, 5722-XH2, V5R4</li> </ul>	<ul style="list-style-type: none"> <li>• iSeries Access for Web, 5722-XH2, V5R3</li> </ul>
<ul style="list-style-type: none"> <li>• iSeries Access for Linux, 5722-XL1</li> </ul>	<ul style="list-style-type: none"> <li>• iSeries Access for Linux, 5722-XL1, V1.10</li> </ul>
<ul style="list-style-type: none"> <li>• iSeries Access for Wireless, 5722-XP1, V5R4</li> </ul>	<ul style="list-style-type: none"> <li>• iSeries Access for Wireless, 5722-XP1, V5R3</li> </ul>
	<ul style="list-style-type: none"> <li>• HATS Limited Edition V5.0, 5724-F97-01</li> </ul>
	<p>V5R3 customers not wanting to upgrade to i5/OS V5R4 but want the new V5R4 iSeries Access Family clients can order no-charge Feature No. 2648 of Product No. 5722-XW1</p>

## iSeries Access and System i Express

Each i5/OS user on System i is entitled to use any client in the iSeries Access Family at no additional charge

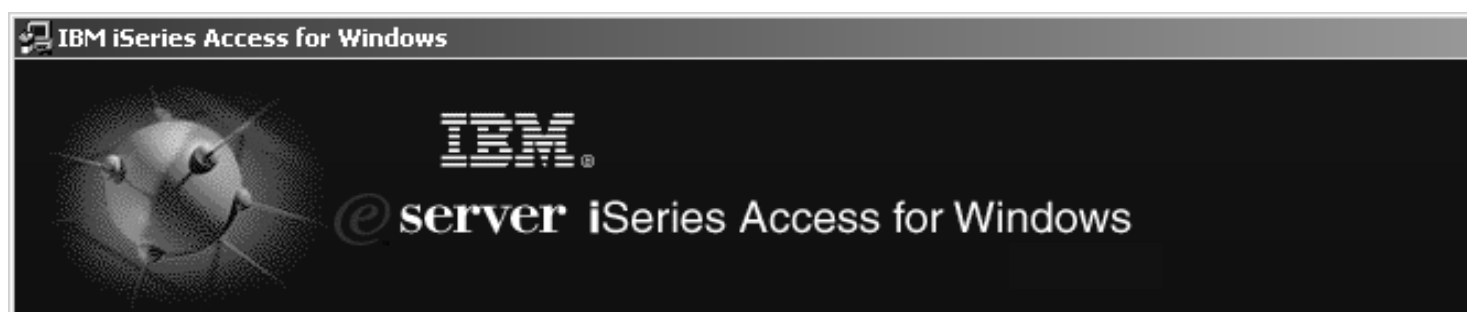
With iSeries Access, users can:

- Access traditional i5/OS applications using the 5250 emulation function
- Query and retrieve DB2 information through easy-to-use GUIs
- Upload spreadsheet information into DB2
- Use i5/OS as a file server
- Access i5/OS printer output, convert it to .PDF, and print it on PC printers



iSeries Access Family (5722-XW1) unlimited user feature included with 515 and 525 systems

**See Announcement Letter No's 107-181 and 107-182 dated 4/10/07 for more details**



**iSeries Access for Windows  
5722-XE1  
V5R4**



[www.ibm.com/eserver/iseries/access/windows](http://www.ibm.com/eserver/iseries/access/windows)

## Integrating native Windows with System i

Want a single solution for working with all your System i resources...

- A single offering designed for Windows users that provides:

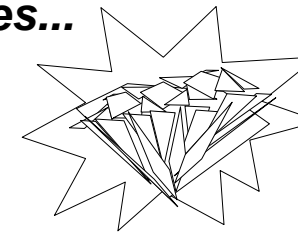
- High-function, easy-to-use 5250 emulator to work with host System i applications
- A PC print server that i5/OS output can be sent to and run unattended
- Access to DB2 for i5/OS data and other resources from Windows applications
- Use System i as file and print server
- Administer users and monitor/manage all System i's in the network

- No special web application server code required

- All code runs natively on the Windows

- It's all in System i Access for Windows

- PC5250 emulation, Data Transfer, ODBC, etc for end users and Windows programmers
- iSeries Navigator for System i operators and administrators
- Operations Console to work with i5/OS system console
- EZ-Setup to quickly and easily set up new System i machines



- The most comprehensive System i native Windows connectivity solution in the market

- 90+% of System i customers already using System i Access for Windows

## Supports Microsoft operating environments...

### Microsoft Transaction Services (MTS)

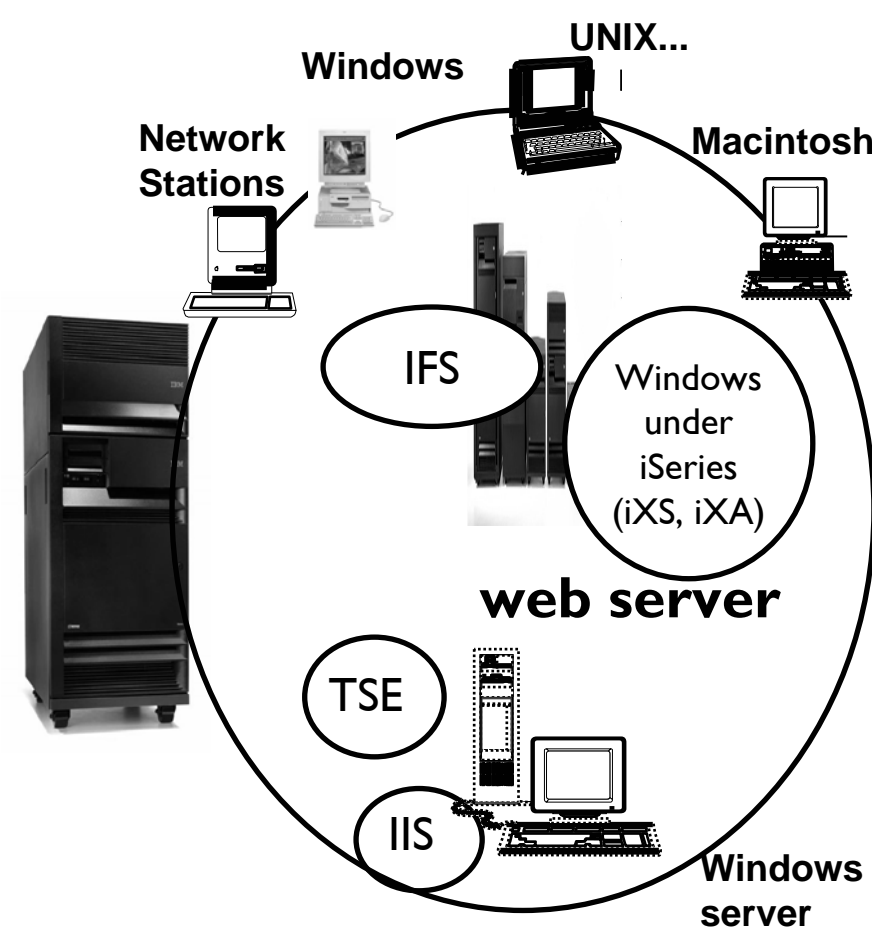
- example, an Auction House application where may need to back out transactions (ie, 2-phase commit)

### Terminal Server Edition (TSE)

- System i Access runs on a Windows server, and enables multiple simultaneous users (such as Network Stations, DOS, Unix, or Macintosh) work with System i resources

### Internet Information Services (IIS)

- Provides a Web application infrastructure for Windows Servers. System i Access runs on server, and fulfills requests for data from System i (ie, ODBC, OLE DB, etc)



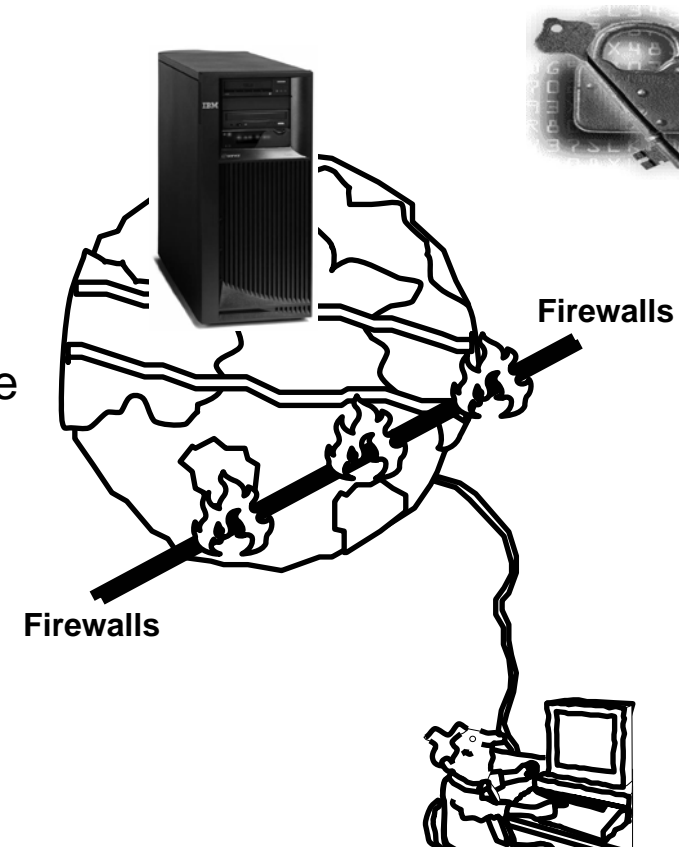
## Supports leading network and security offerings...

### Security

- **Secure Sockets Layer (SSL)**
  - Including SSL client authentication
- **Kerberos**
  - Enterprise Identify Mapping (EIM) can be used with Kerberos
- **Long passwords**

### Networking

- **Virtual Private Networks (VPN)**
  - Tunneling protocol and encryption to ensure secure communications
- **Network Address Translation (NAT)**
  - Hides System i address when on Internet



If you do it on System i  
can do it with System i  
Access for Windows...

## Windows Operating Systems

The V5R4 version of System i Access for Windows can be installed on:

- Windows 2000
- Windows XP Professional
- Windows XP Tablet PCs
- Windows 2003 Server
- Windows Vista\*

### 64-bit Processors supported\*\*

- Advanced Micro Devices (AMD64)
- Intel with EM64T
- Intel with Itanium

\* See Info APAR II14239 for details

\*\* 64-bit support, refer to detailed information at

[www.ibm.com/eserver/series/access/supportedos.htm](http://www.ibm.com/eserver/series/access/supportedos.htm)



### V5R3 iSeries Access for Windows installs on:

- Windows NT 4.0, 2000, XP, 2003

### V5R2 iSeries Access for Windows installs on:

- Windows 98, ME, NT 4.0, 2000, XP, 2003

### V5R1 iSeries Access for Windows installs on:

- Windows 95, 98, and ME, NT 4.0, 2000, XP

## System i Access for Windows Installer – Technology Preview

Available for customers who prefer to use the Microsoft Windows Installer technology.

- English National Language Version 2924 only
- Can be used on Microsoft Windows XP, Windows 2000, and 32-bit version of Windows Server 2003.

Download it from [www.ibm.com/eserver/series/access/windows](http://www.ibm.com/eserver/series/access/windows).

- Detailed information on the features included in this Technical Preview.

## Technology Preview support of Windows Vista

The Technology Preview supports 32-bit Vista Vista Ultimate and Business Editions

- It does not support 64-bit Vista versions.

Acquire Service Pack SI25949 or later to run on Vista.

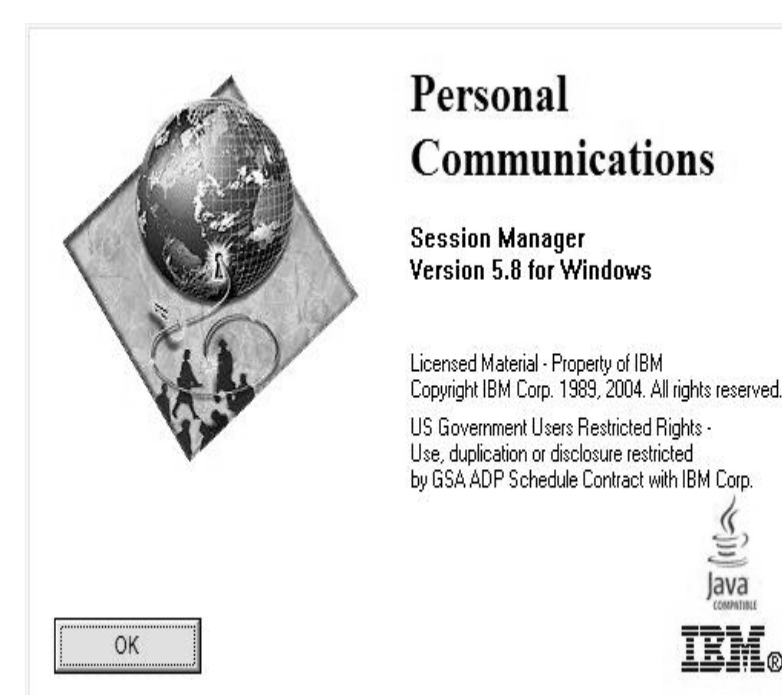
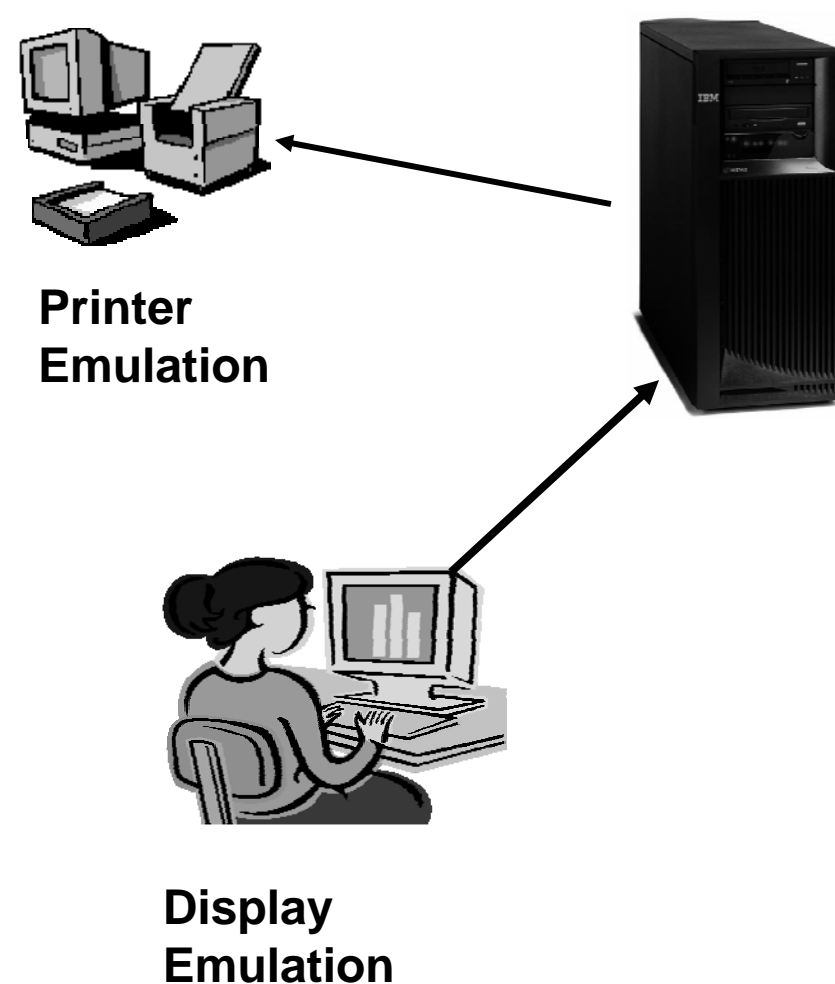
See README on System i Access web page at: [http://www-03.ibm.com/servers/eserver/series/access/windows/tech\\_preview.html](http://www-03.ibm.com/servers/eserver/series/access/windows/tech_preview.html) for more detail



## IBM Product Preview – general direction

- **iSeries Access for Windows adds support for the Windows Installer technology. The first implementation of this is a Technology Preview, available to download at [http://www.ibm.com/eserver/series/access/windows/tech\\_preview.html](http://www.ibm.com/eserver/series/access/windows/tech_preview.html)**
- **This download package contains iSeries Access for Windows V5R4 (available in English only) with the latest service pack included. The iSeries Navigator components are not included with this installation image.**
- **In the next release, IBM intends to make the iSeries Access for Windows with Windows Installer technology generally available. IBM intends to support and translate all components of iSeries Access for Windows, including iSeries Navigator.**

## PC5250 updated with Personal Communications 5.8



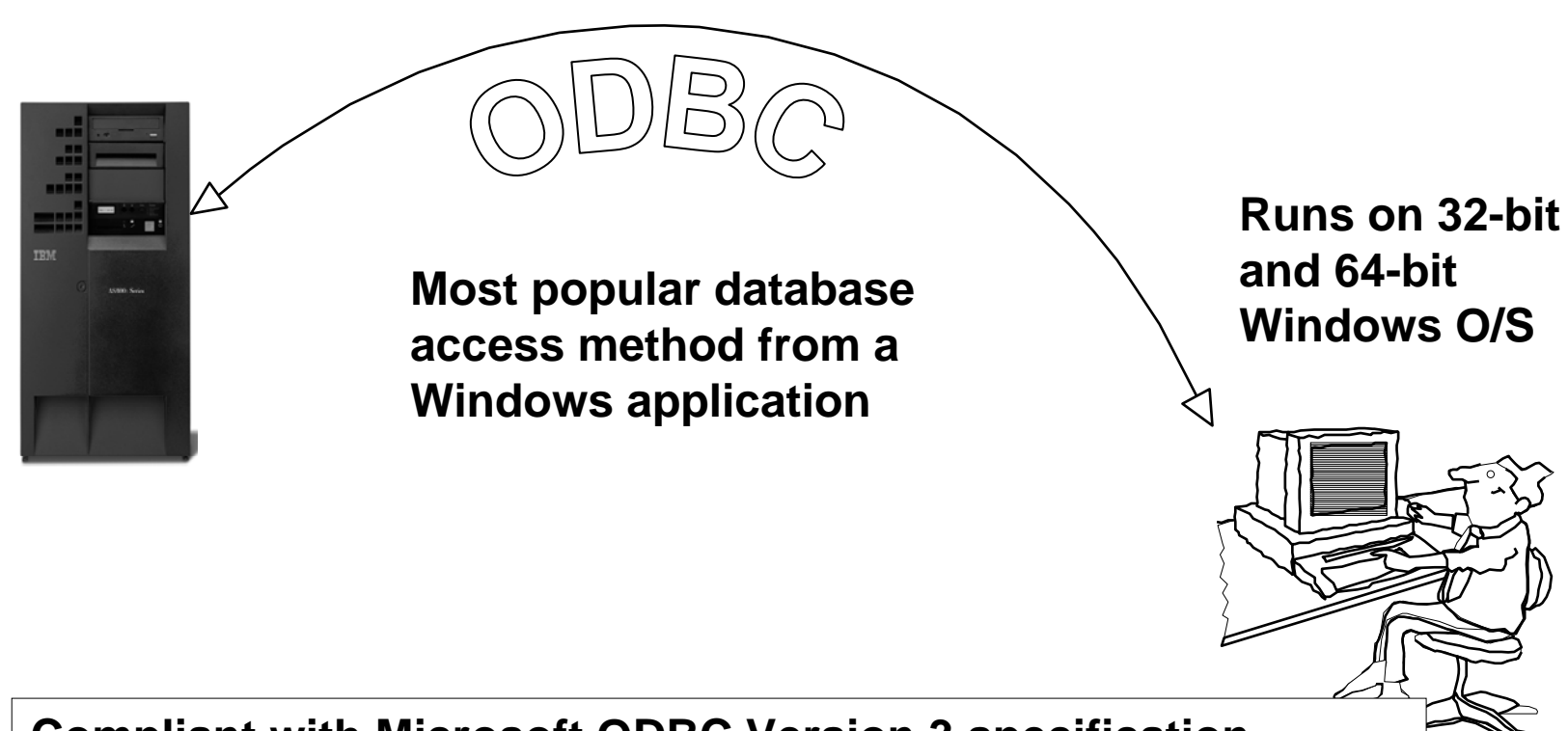
***The 5250 emulator (PC5250),  
integrated with iSeries Access  
for Windows, is the Version 5.8  
of IBM Personal  
Communications***



## PC5250 Enhancements – V5R4, V5R3, V5R2

V5R4 Enhancements PC5250 V5.8	V5R3 Enhancements PC5250 V5.7	V5R2 Enhancements PC5250 V5.5
<ul style="list-style-type: none"> <li>• Can now associate printer sessions with display sessions</li> <li>• A new configurable, printer session window for host, printer, and page setup support.</li> <li>• New programming interfaces (APIs) to retrieve and modify Page Setup and Printer Setup information</li> <li>• Additional bi-directional enablement</li> <li>• New automation objects support for the .NET environment</li> </ul>	<ul style="list-style-type: none"> <li>• Accessibility enhancements to the operator information area (OIA): Popup keypad, and Color mapping as well as visual indication of sounds</li> <li>• Enhanced mouse marking</li> <li>• Bidirectional (LamAlef) enhancements</li> <li>• USB Japanese 106 keyboard support</li> <li>• Basic_ascii print PDF and PDT</li> </ul>	<ul style="list-style-type: none"> <li>• Bypass sign-on can be used with Kerberos tickets to avoid a sign-on screen</li> <li>• Can wrap pasted text across fields and lines without breaking in the middle of a word, or ending a line with an invalid word.</li> <li>• Move +/- sign before the number when copying/pasting</li> <li>• Added Hindi and Japanese code pages 1390/1399</li> </ul>

## System i ODBC Driver



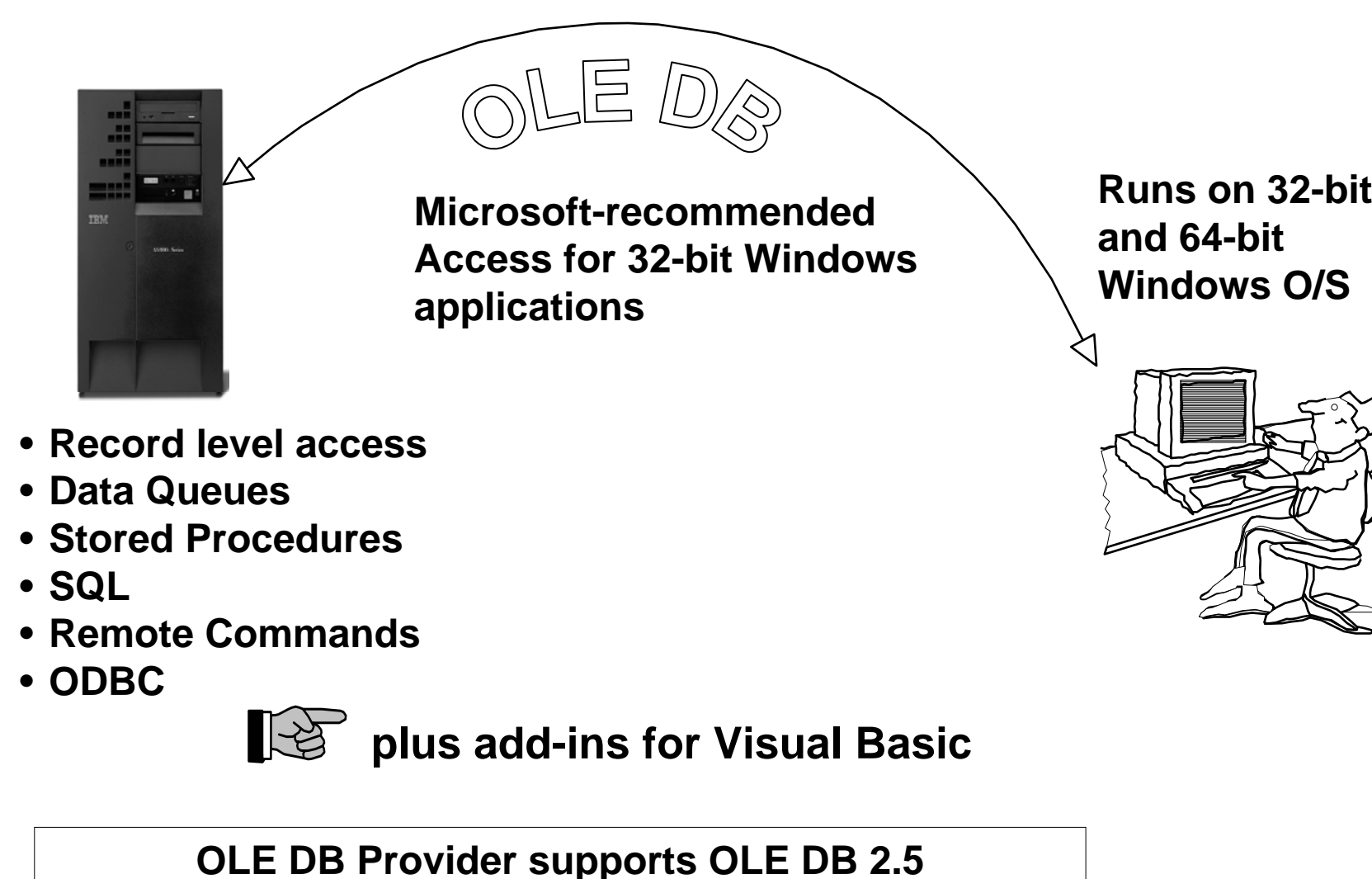
Compliant with Microsoft ODBC Version 3 specification

- PC applications can now take advantage of new functions included in the 3.5 Specification.

### ODBC Enhancements – V5R4, V5R3, V5R2

V5R4 Enhancements	V5R3 Enhancements	V5R2 Enhancements
<p><b>Requires i5/OS V5R4</b></p> <ul style="list-style-type: none"> <li>• 128-byte column names</li> <li>• Maximum SQL statement lengths of 2,097,152 bytes or 1,048,576 characters</li> <li>• Support for IBM Enterprise Workload Manager (eWLM) correlator</li> <li>• Support for lock sharing between loosely coupled transactions</li> </ul> <p><b>OS/400 V5R2 or later</b></p> <ul style="list-style-type: none"> <li>• Improved support for delimited names</li> </ul>	<ul style="list-style-type: none"> <li>• Support for UTF-8 / UTF-16 data</li> <li>• Support for BINARY / VARBINARY data types</li> <li>• Support for increased precision of decimal numbers</li> <li>• Enhanced MTS support</li> <li>• ANSI / ISO (American National Standards Institute / International Standards Organization) Core Level SQL standard of 1999</li> </ul>	<ul style="list-style-type: none"> <li>• 64K SQL Statements</li> <li>• Additional descriptor information</li> <li>• MTS Support (actually shipped in V5R1)</li> </ul>

### System i OLE DB Provider



IBM System i IBM

## Visual Basic Programming Aides

The screenshot shows the Microsoft Visual Basic design environment. The main window displays a form titled 'Form1' with the following text:

- Wizards to aid in developing Visual Basic applications
- Sample programs for IE, PowerBuilder, Delphi, Visual C++, Lotus 1-2-3

A context menu is open over the form, listing options such as 'Link Tables...', 'Link Stored Procedures...', 'Link Data Queues...', 'Link Commands...', 'Link Programs...', 'Create Form from Links...', 'Work with Stored Procedures...', 'Work with Data Queues...', 'Options...', and 'Help...'. The Properties window on the right shows the 'Caption' property for the form.

**add-ins for Visual Basic**

21 *i want an i.* © 2007 IBM Corporation

IBM System i IBM

## OLE DB Enhancements – V5R4, V5R3, V5R2

V5R4 Enhancements	V5R3 Enhancements	V5R2 Enhancements
<p><b>Requires i5/OS V5R4</b></p> <ul style="list-style-type: none"> <li>• 128 byte column names</li> <li>• Maximum SQL statement lengths of 2,097,152 bytes or 1,048,576 characters</li> <li>• Support for IBM Enterprise Workload Manager (eWLM) correlator</li> </ul> <p><b>OS/400 V5R2 or later</b></p> <ul style="list-style-type: none"> <li>• System naming and library list</li> <li>• Improved support for delimited names</li> </ul>	<p><b>Unicode support</b></p> <ul style="list-style-type: none"> <li>• UTF-8 &amp; UTF-16 support</li> </ul> <p><b>New SQL-only provider (IBMDASQL)</b></p> <ul style="list-style-type: none"> <li>• SQL commitment control using IBMDASQL</li> <li>• MTS support using IBMDASQL</li> </ul> <p><b>New Record-Level Access-only provider (IBMDARLA)</b></p> <ul style="list-style-type: none"> <li>• Record-level access support for forward-only cursors and blocked reads using IBMDARLA</li> </ul> <p><b>SQL</b></p> <ul style="list-style-type: none"> <li>• Custom blocking in SQL</li> <li>• SQL data compression</li> <li>• SQL package support</li> <li>• Supports updatable cursors for SQL dialect</li> </ul> <p><b>BINARY and VARBINARY data types</b></p> <p><b>Larger decimal precision support</b></p>	<p><b>Custom properties added</b></p> <ul style="list-style-type: none"> <li>• Force Translate (translate CCSID 65535 data)</li> <li>• Default Collection</li> <li>• Catalog Library List</li> <li>• Convert Date Time To Char</li> </ul> <p>– Supports ROW-ID</p> <p>– 64K SQL Statements</p> <p>– Additional descriptor information</p> <p>– Is thread safe</p> <p>– OLE DB provider works with Windows products, such as:</p> <ul style="list-style-type: none"> <li>• Visual Basic 6.0 OLE DB controls and wizards</li> <li>• ADO 2.5 – ships with Microsoft Windows 2000</li> <li>• ADO 2.1 - ships with Microsoft IE 5.0 and Office/2000 products</li> <li>• An OLE DB interface is provided to support ADO recordset Seek (ADO 2.x)</li> </ul>

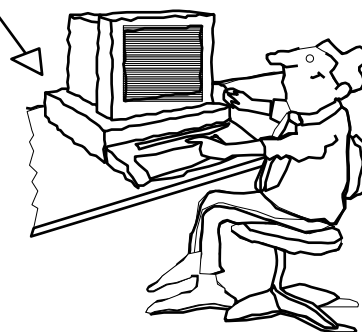
22 *i want an i.* © 2007 IBM Corporation

## System i .NET Provider

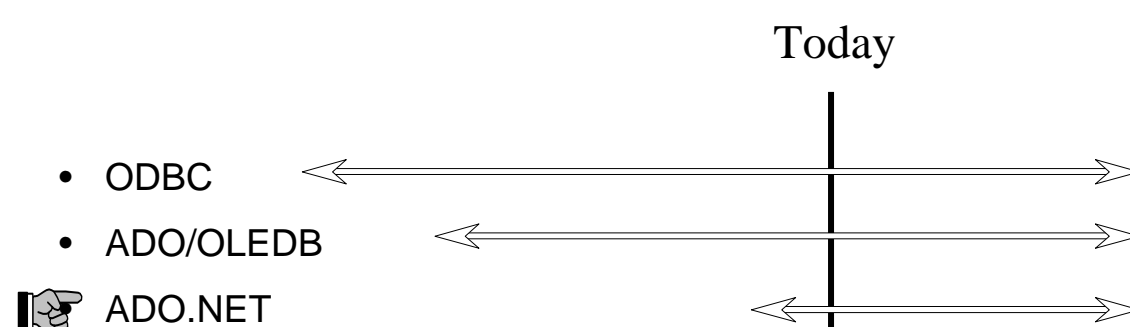


**.NET**  
The next big wave in  
Microsoft technology

Runs on 32-bit  
and 64-bit  
Windows O/S



### Microsoft's Technology Roadmap



The .NET provider is named **IBM.Data.DB2.iSeries**.

- It allows applications using Microsoft's .NET framework to access DB2 for i5/OS databases.

For complete documentation of the .NET Data Provider, see **IBM DB2 for i5/OS .NET Provider Technical Reference**.

## .NET Enhancements – V5R4, V5R3

V5R4 Enhancements	V5R3 Enhancements
<p>Requires i5/OS V5R4</p> <ul style="list-style-type: none"> <li>• 128 byte column names</li> <li>• Maximum SQL statement lengths of 2,097,152 bytes or 1,048,576 characters</li> <li>• Support for IBM Enterprise Workload Manager (eWLM) correlator</li> </ul> <p>Requires OS/400 V5R2 or later</p> <ul style="list-style-type: none"> <li>• System naming and library list</li> <li>• Support for LOB data types</li> <li>• Support for multiple active result sets per connection</li> <li>• Customizable String processing for Char for Bit Data, Date, Time, Timestamp, Decimal, and Numeric data types</li> <li>• Support for IntelliSense</li> <li>• Additional sample programs</li> <li>• Improved support for delimited names</li> </ul>	<p>Requires OS/400 V5R2 or later</p> <ul style="list-style-type: none"> <li>• SQL (INSERT, UPDATE, DELETE)</li> <li>• Commitment Control</li> <li>• Connection Pooling</li> <li>• SQL naming</li> <li>• Unicode</li> <li>• Tracing</li> <li>• Threads</li> <li>• IASPs (multiple databases)</li> <li>• Stored Procedure Support</li> <li>• iSeries-specific Properties</li> <li>• User-Defined Types</li> </ul> <p>Supported later via SP SI15176</p> <ul style="list-style-type: none"> <li>• System Naming (/)</li> <li>• Library List</li> <li>• Large Objects (LOBs)</li> </ul>

## IBM Product Preview – general direction

**In i5/OS V5R4, the .NET data provider (IBM.Data.DB2.iSeries) in iSeries Access for Windows supports:**

- ADO.NET 1.0 interface
- ADO.NET 1.1 interface

**In the next release, IBM intends to support:**

- ADO .NET 2.0 base classes and factories

**in the .NET data provider.**

## Redbook - SG24-6440

8,000+ downloads in first 6 months!

### Integrating DB2 Universal Database for iSeries with Microsoft ADO .NET

Customers have been using the IBM DB2 for i5/OS for many years with data access technologies such as ODBC and OLE DB. The newest data access technology from Microsoft is called ADO.NET. Applications that use ADO.NET with i5/OS can work with several different .NET providers:

#### **The IBM.Data.DB2.iSeries provider, a .NET-managed provider new to iSeries Access for Windows in V5R3**

- The IBM.Data.DB2 provider, a .NET provider that works with all IBM platforms in conjunction with DB2 Connect
- The Microsoft System.Data.OLE DB provider, as a bridge to one of the OLE DB providers included with iSeries Access for Windows (IBMDA400, IBMDASQL, and IBMDARLA)
- The Microsoft System.Data.Odbc provider, as a bridge to the ODBC driver included with iSeries Access for Windows

**This IBM Redbook shows customers how to use ADO.NET effectively to harness the power of DB2 for i5/OS, showing examples, best practices, pitfalls, and comparisons between the different ADO.NET data providers.**

## Incoming Remote Command (IRC)

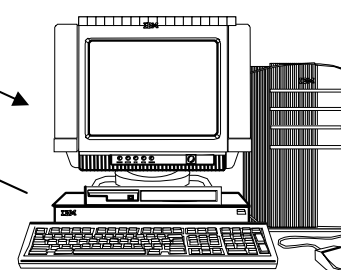


- RUNRMTCMD is used to run a PC command from the i5/OS command line in a 5250 session
- Since it is a CL command, RUNRMTCMD may also be run from a CL program running on System i

1

2

iSeries Access for Windows



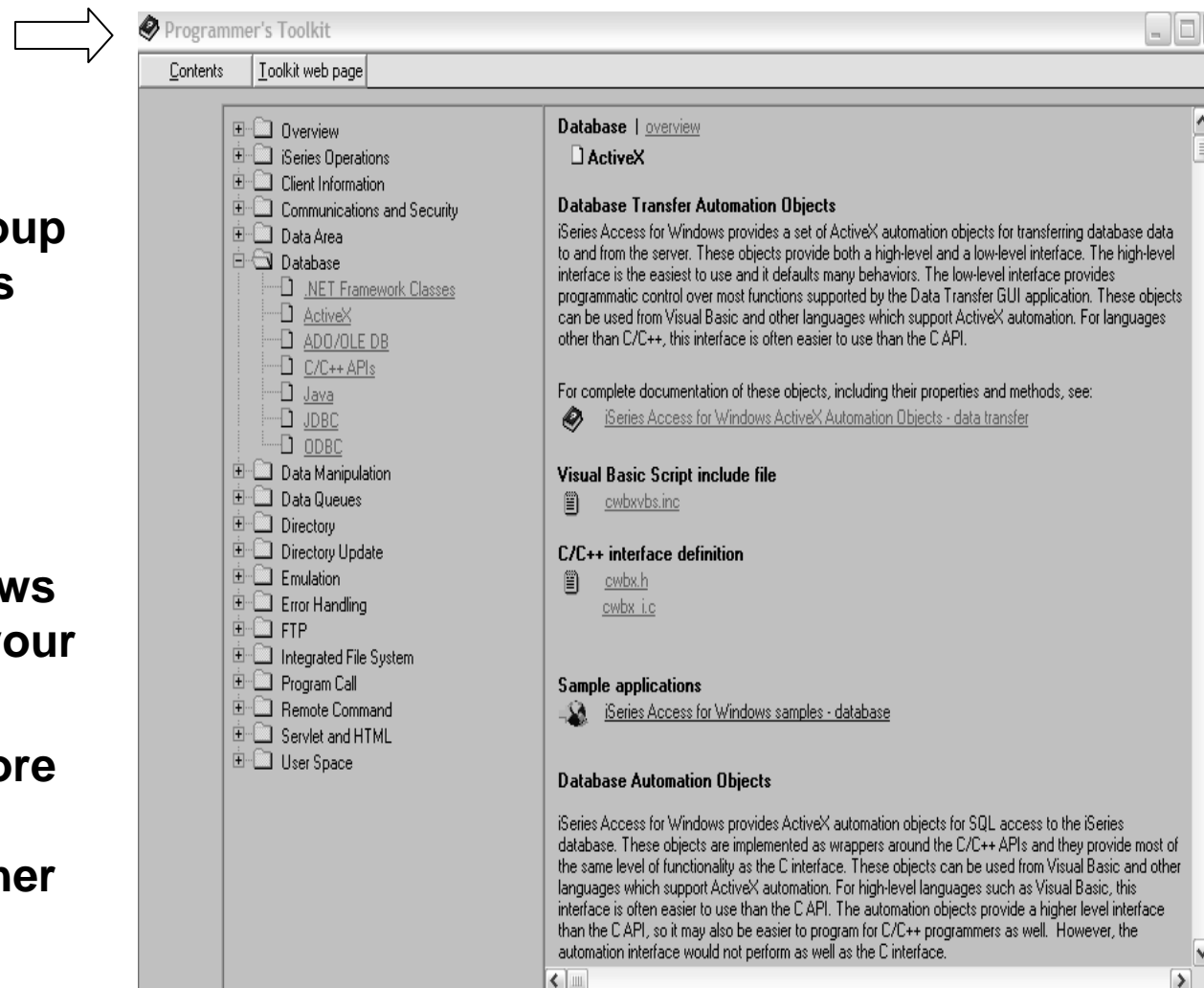
- CWBRXD is the name of the program that provides and controls the Incoming Remote Command (IRC) function
  - RXD in the name stands for Remote eXecution Daemon
  - The terms CWBRXD and IRC are used interchangeably

V5R4	V5R3
The remote program interfaces (CWBRC.H) that run on the PC have been changed to allow a more complete list of job messages to be returned.	<p><b>A new option: /loadprof</b></p> <p>Allows commands to have access to the user-specific registry and environment variable settings while they are running</p> <ul style="list-style-type: none"> <li>• Some commands require setting this option in order to work properly</li> <li>• This option can be saved on the Incoming Remote Command tab of iSeries Access for Windows Properties, where it is called Load user profile when command run in user context</li> </ul> <p>For further information regarding this new option, refer to the CWBRXD and Incoming Remote Command topic in the User's Guide (use this path: Start &gt; Programs &gt; IBM iSeries Access for Windows &gt; User's Guide)</p>

- The Incoming Remote Command function runs a command on the Windows PC and then routes any text output that is generated by the command back to the requesting system.
- Commands are sent to the Windows PC in the format of commands that are typed on a Windows command prompt
- The output that would normally appear in that command prompt is sent back to the requesting system
- If the command produces no output, a no output message is sent instead.
- When a command is sent from a remote system, a message is logged in the iSeries Access for Windows history log. The message information that is logged identifies the system and user ID that sent the remote command, the text of the command that was sent, and whether or not the command could run. If no user ID is specified with the command, no user ID is logged.

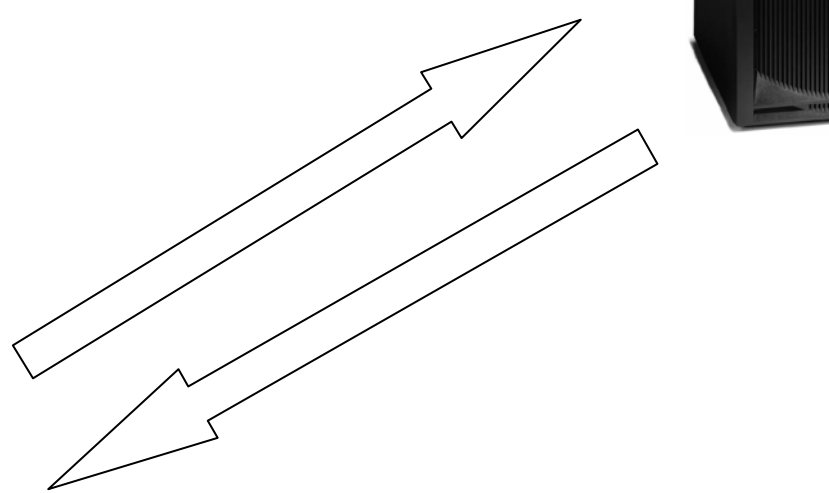
## iSeries Access - Programmer's Toolkit

- ✓ Installable option of Access for Windows
- ✓ Included in the icon group for Access for Windows
- ✓ Contains sample programs, and documentation
- ✓ Also contains links to header files and Windows Help files installed on your PC
- ✓ Has Internet links to more sample programs, documentation, and other helpful information



## Data Transfer

- Copy Data to DB2 for i5/OS database
- Copy Data from DB2 for i5/OS database





## Data Transfer Enhancements – V5R4, V5R3, V5R2

V5R4 Enhancements	V5R3 Enhancements	V5R2 Enhancements
<ul style="list-style-type: none"> <li>• Support MS Excel XML Spreadsheet format</li> <li>• Support 128-byte column names</li> <li>• Support PC selection of an independent auxiliary storage pool (IASP)</li> <li>• Support creating and overwriting empty query result sets</li> <li>• Improved support for delimited names (requires V5R4 SP1)</li> </ul>	<ul style="list-style-type: none"> <li>• Unicode enablement / New Unicode text file type               <ul style="list-style-type: none"> <li>– Support UTF-8 and UTF-16 data in DB2 database tables</li> </ul> </li> <li>• Support larger decimal precision</li> <li>• Support BINARY and VARBINARY SQL data types</li> <li>• Support most recently used request list and last directory in Excel Add-in</li> <li>• Date/Time fields recognized by Data Transfer and now stored on DB2 for i5/OS as 'date or time' field.</li> <li>• Option to convert numeric to character when transferring to DB2 for i5/OS</li> <li>• Support data compression for faster transfers</li> </ul>	<ul style="list-style-type: none"> <li>• Support for uploading more than 256 columns of data to a database file</li> <li>• Add-ins for Excel to upload data directly from spreadsheet</li> <li>• Support Excel V7 (BIFF7) and V8 (BIFF8) file formats. (Excel 97 and 2000 use V8 file formats)</li> <li>• Support Lotus 123 V9 file format (with 65,536 rows)</li> <li>• Support numeric cells within formula (Excel, Lotus 123)</li> <li>• Support new DB2 for i5/OS database functions</li> </ul>

## Example of Unicode Enablement – UTF8 and UTF16

UTF8	UCS2	UTF16
ABC	ABC	ABC
εΦΩ	εΦΩ	εΦΩ
Для	Для	Для
אבג	אבג	אבג
طسذ	طسذ	طسذ

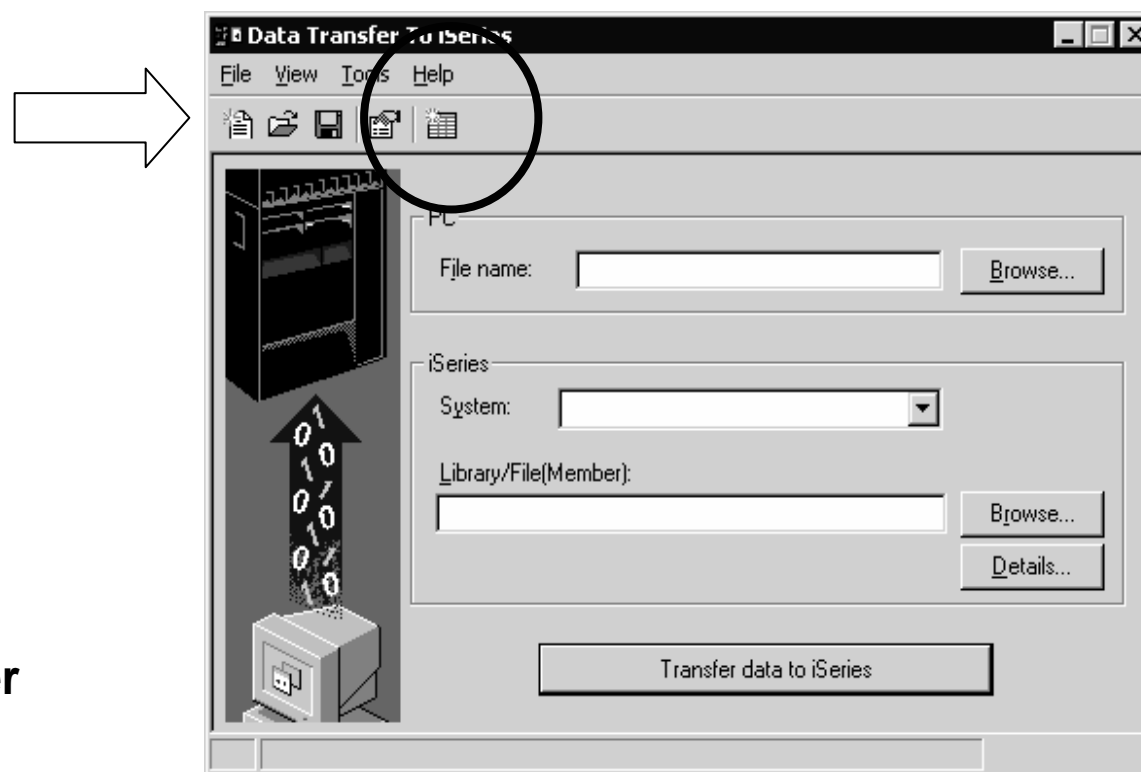
Retrieved record 7

## Create iSeries Database File - Wizard

### iSeries Access for Windows

You start the 'Create iSeries Database File' wizard by selecting it from the Tools menu or by clicking on its icon in the toolbar

- Plan ahead by increasing lengths if necessary.
- Do not include character and numeric data in the same column.



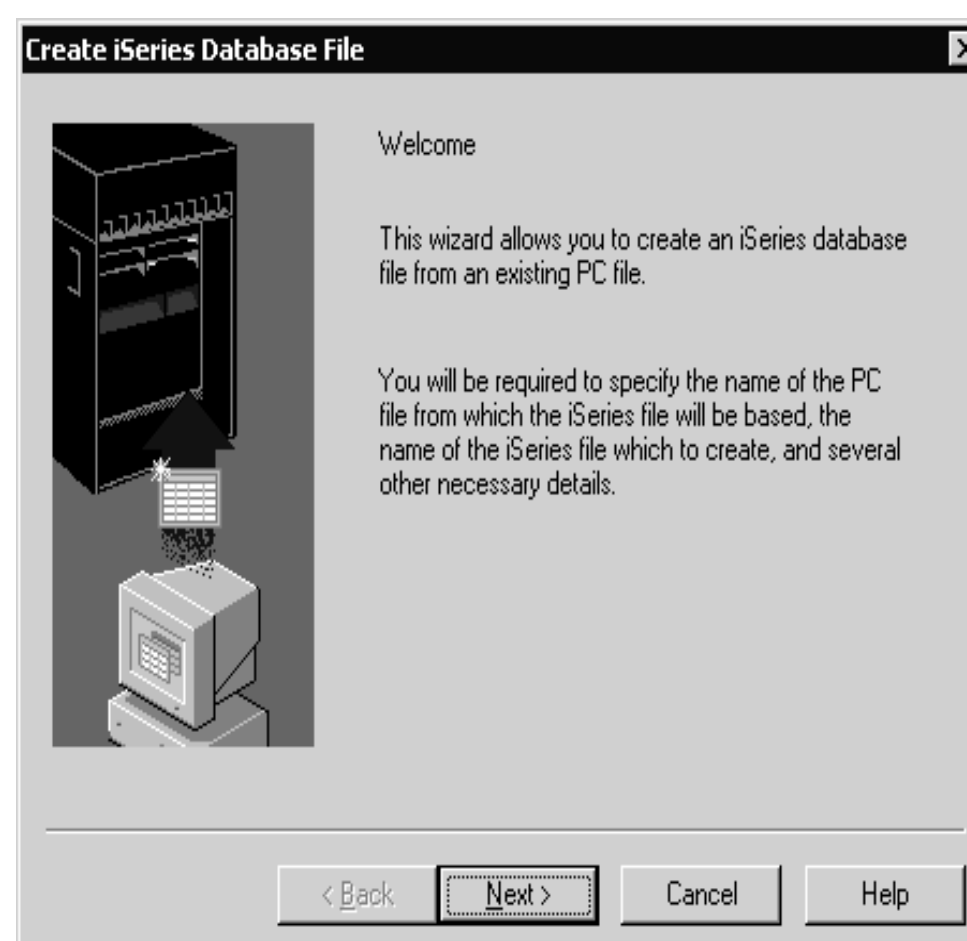
## Create iSeries Database File Wizard

### iSeries Access for Windows

The wizard creates:

- A File Description File (FDF)
- A Database file on the server

The wizard does not do the actual data transfer to the System i



IBM System i IBM

## Create Data Transfer Upload Using GUI

The PC file name

The System i where the file was created

The Library/File name of our new file

Click to transfer data to your new file

35 *i want an i.* © 2007 IBM Corporation

IBM System i IBM

## Transfer Data to System i

Step through the wizard's GUI panels and:

- Set up the library list
- Select the PC file that contains your data
- Select the PC file type
- Select the File Description File (FDF)
- Change Data Format Options (best to skip this panel)
- Scan PC File
- View results of the Scan PC File function
- View Field Details panel
- Select the System i System Name

Library Name	Type
QIWS	User
QGPL	System
QTEMP	System
QDEVELOP	System
QBLDSYS	System
QBLDSYSR	System

36 *i want an i.* © 2007 IBM Corporation

## Creating a Basic Data Transfer

A	B	C	D	E	F	G	H	I	J	K	
1	CUSNUM	LSTNAM	INIT	STREET	CITY	STATE	ZIPCOD	COTLMT	CHGCOO	BALDUE	COTDUE
2	938472	Henning	G K	4859 Elm Av	Dallas	TX	75217	5000		3	37
3	839283	Jones	B D	21B NW 13C	Clay	NY	13041	400		1	100
4	392859	Vine	S S	PO Box 79	Broton	VT	5046	700		1	439
5	938485	Johnson	J A	3 Alpine W	Helen	GA	30545	9999	2	3987.5	33.5
6	397267	Tyron	W E	13 Myrtle Dr	Hector	NY	14841	1000		1	0
7	389572	Stevens	K L	208 Snow P	Denver	CO	80226	400		1	58.75
8		Alison	J S	787 Lake Dr	Isle	CA	56342	5000		3	10
9	475938	Doe	J W	59 Archer Pl	Sutter	CA	95685	700	2	250	100
10	683829	Thomas	A N	3 Dove Cir	Casper	WY	82609	9999	2	0	0
11	583029	Williams	E D	485 SE 2 Av	Dallas	TX	75218	200		1	25
12	192837	bbb	FL	5963 Oak St	Hector	NY	14841	700	2	489.5	0.5
13	583990	ccc	M T	382 Mill St	Isle	MN	56342	9999	3	500	0



Uploading a file to System i

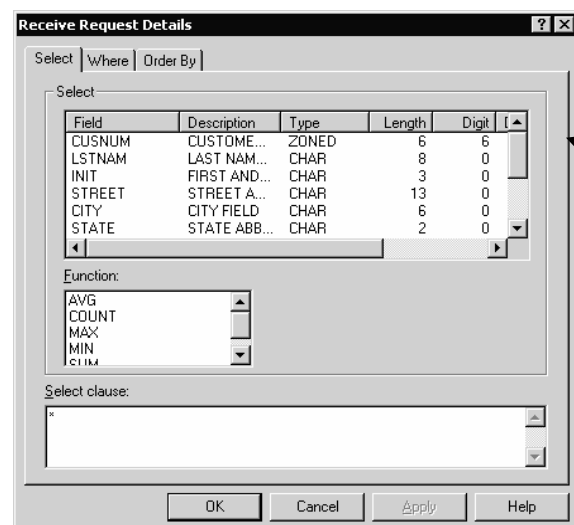
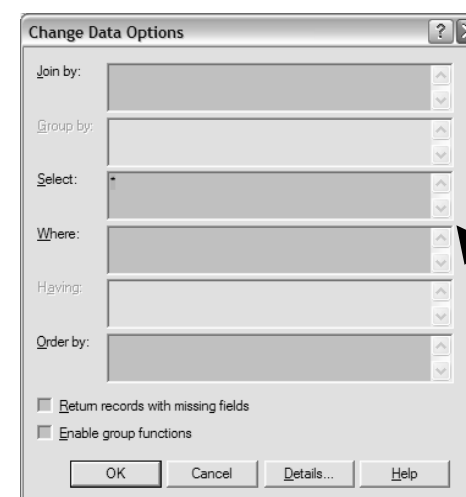
Library: INFO

Table: CUSTOMER

## Data Transfer from iSeries GUI for building SQL Queries



Click the Data Options button to start the Data Transfer Query Builder.



The Query Builder  
 Lets you generate SQL queries without knowing SQL  
 Can do Joins, Groups, and Conditional Grouping  
 Builds SELECT statements

The Native SQL interface allows you to type in a free form SELECT statement.  
 A list of files and columns in those files are provided to help you build your statement

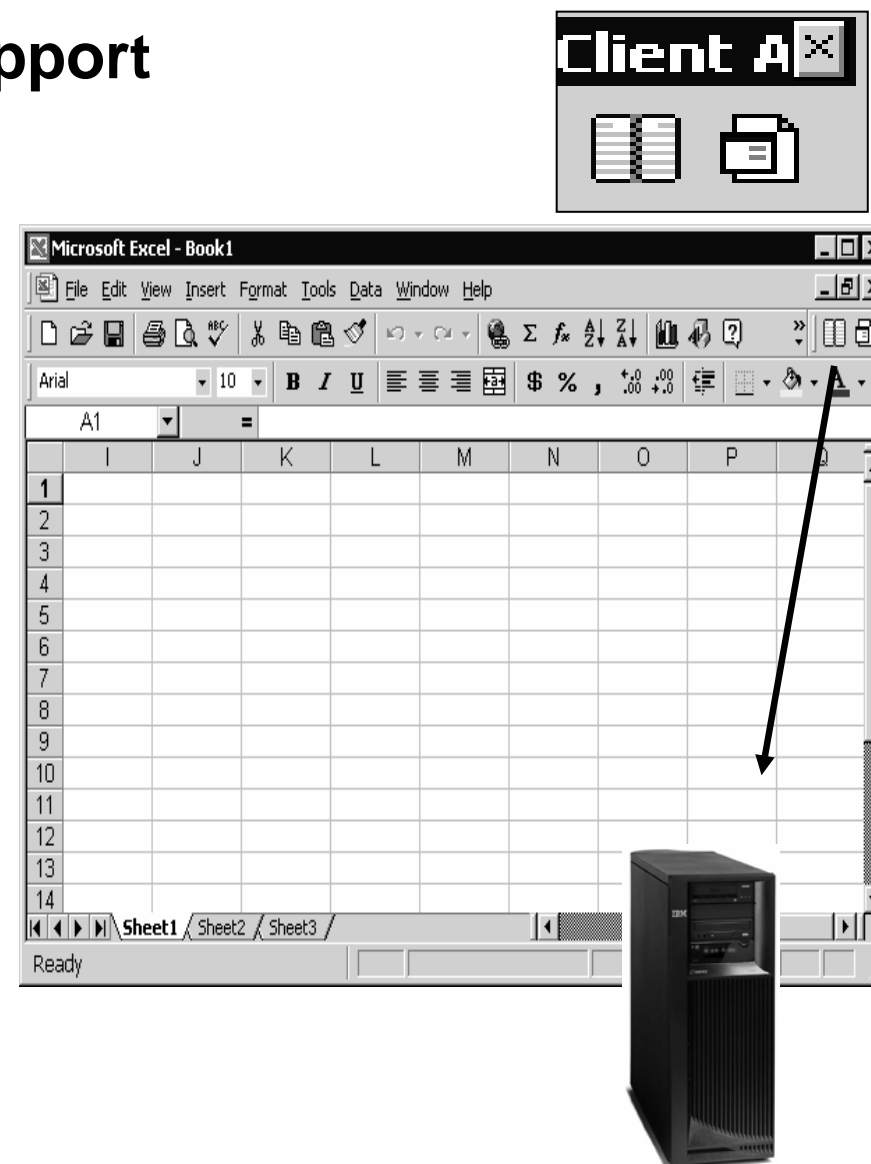
## Microsoft Excel Add-in Support

Add-ins are provided for both 'Downloading' and 'Uploading' data to/from Microsoft Excel spreadsheets and the DB2 for i5/OS

Works with:

- Microsoft Excel 97
- Excel 2000
- Excel XP

Use these add-ins by clicking on the Data Transfer upload or download buttons on the Excel toolbar



## Viewing the results in Excel

	A	B	C	D	E	F	G	H	I	J	K
1	CUSNUM	LSTNAM	INIT	STREET	CITY	STATE	ZIPCOD	CDTLMT	CHGCOD	BALDUE	CDTDUE
2	938472	Henning	G K	4859 Elm	Dallas	TX	75217	5000	3	37	0
3	839283	Jones	B D	21B NW 1	Clay	NY	13041	400	1	100	0
4	392859	Vine	S S	PO Box 75	Broton	VT	5046	700	1	439	0
5	938485	Johnson	J A	3 Alpine W	Helen	GA	30545	9999	2	3987.5	33.5
6	397267	Tyron	W E	13 Myrtle	Hector	NY	14841	1000	1	0	0
7	389572	Stevens	K L	208 Snow	Denver	CO	80226	400	1	58.75	1.5
8	846283	Alison	J S	787 Lake	Isle	MN	56342	5000	3	10	0
9	475938	Doe	J W	59 Archer	Sutter	CA	95685	700	2	250	100
10	693829	Thomas	A N	3 Dove Cir	Casper	WY	82609	9999	2	0	0
11	593029	Williams	E D	485 SE 2	Dallas	TX	75218	200	1	25	0
12	192837	Lee	F L	5963 Oak	Hector	NY	14841	700	2	489.5	0.5
13	583990	Abraham	M T	392 Mill St	Isle	MN	56342	9999	3	500	0

## Batch Transfer Command Interface

### *iSeries Access for Windows*

#### RTOPCB

- Does batch data transfers from System i to the PC

#### RFROMPCB

- Does batch data transfers from the PC to System i

#### RXFERPCB

- Does batch data transfers from System i to the PC
- Does batch data transfers from the PC to System i

## RTOPCB Example

*Data Transfer from  
System i: Batch  
transfer command  
interface*

**RTOPCB** [/S] [[/I] [filename [/C] [...]] | [[/I] /F list file] ]

- /S            Show transfer statistics.  
filename    An iSeries to PC transfer request (.TTO or .DTF),  
              Rumba (.RTO), or Windows 3.1 (.DT) file transfer request.  
/C            Process next file independent of previous file.  
/I            Ignore warnings.  
/F            Process files within list file (one filename per line).  
list file    A file containing a list of transfer files to process.

#### Examples:

```
RTOPCB c:\temp\test.tto
RTOPCB /S c:\temp\test.tto /C c:\temp\trans.dtf
RTOPCB /S /F c:\temp\transfer.dtf
```

**RFROMPCB Example**

**Data Transfer to  
System i: Batch  
transfer command  
interface**

**RFROMPCB** [/S] [[/I] [filename [/C] [...]] | [/I] [/F list file] ]

/S Show transfer statistics.  
 filename A PC to iSeries file transfer request (.TFR or .DTT),  
 Rumba (.RTO), or Windows 3.1 (.DT) file transfer request.  
 /C Process next file independent of previous file.  
 /F Process files within list file (one filename per line).  
 list file A file containing a list of transfer files to process.

Examples:

RFROMPCB c:\temp\test.tfr  
 RFROMPCB /S c:\temp\test.tfr /C c:\temp\trans.dtt  
 RFROMPCB /S /F c:\temp\transfer.dtt

**RXFERPCB Example**

**Data Transfer between  
System i: Batch transfer  
command interface**

**RXFERPCB** request userID password

request - Fully qualified file name of any Client Access upload or  
 download request of type .DTF, .DTT, .TTO, or .TFR.

userID - A valid i5/OS user profile for the system specified in the  
 request.

password - A valid password for the specified user profile.

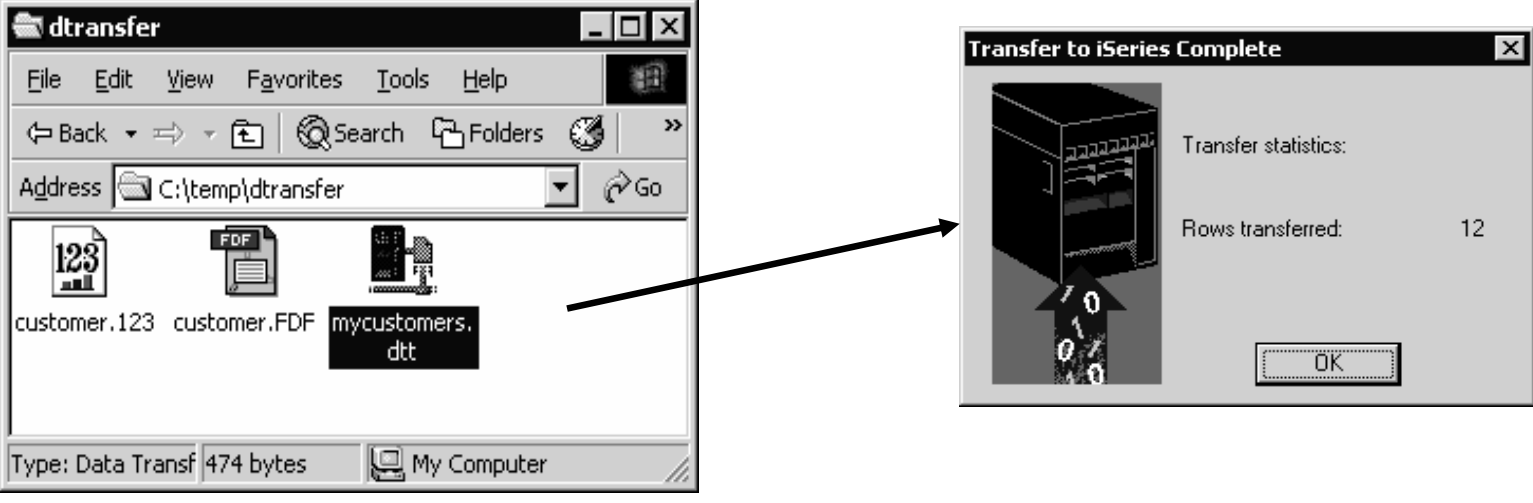
Examples:

RXFERPCB c:\temp\upload.dtf myuserid mypassword  
 RXFERPCB c:\temp\download.dtt myuserid mypassword

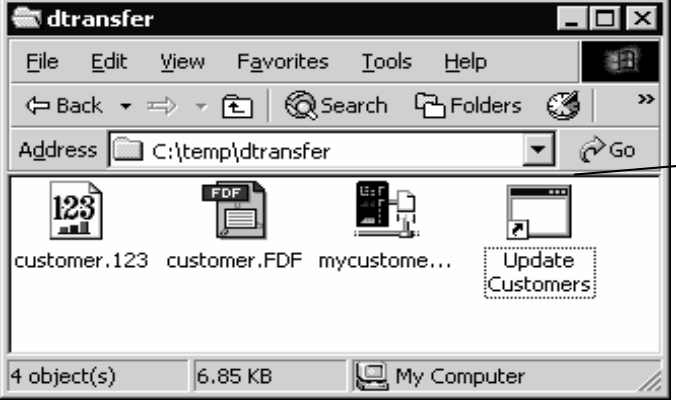


IBM System i IBM

## Run Data Transfer by Clicking an Icon



**Double-click on an icon**



Data can be uploaded with no prompt to user

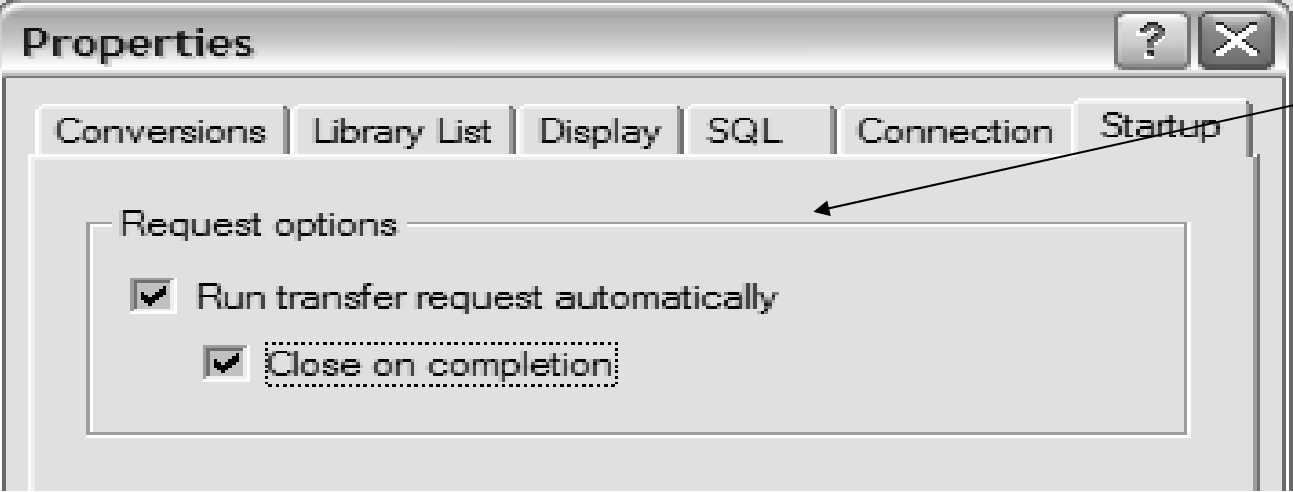
45 *i want an i.* © 2007 IBM Corporation

IBM System i IBM

## Auto-run/auto-close support

**Use the Properties panel to set up Auto-Run and Auto-Close.**  
**You get to it by getting into the Data Transfer program, then selecting File -> Properties**

**The options:**  
**Allow transfer requests to run automatically when opened**  
**Allow transfer requests to close after the transfer has completed**



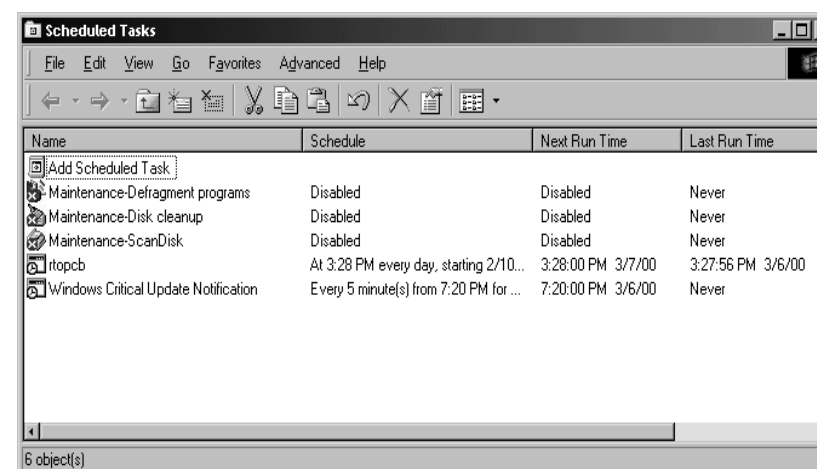
If you select both options, then it will run without user intervention

46 *i want an i.* © 2007 IBM Corporation

## Scheduling a Data Transfer Request

- Use Access for Windows Batch Commands to create the appropriate Data Transfer request
- Using Microsoft Windows Scheduler, you could schedule iSeries Access for Windows Batch Transfers to run without user intervention

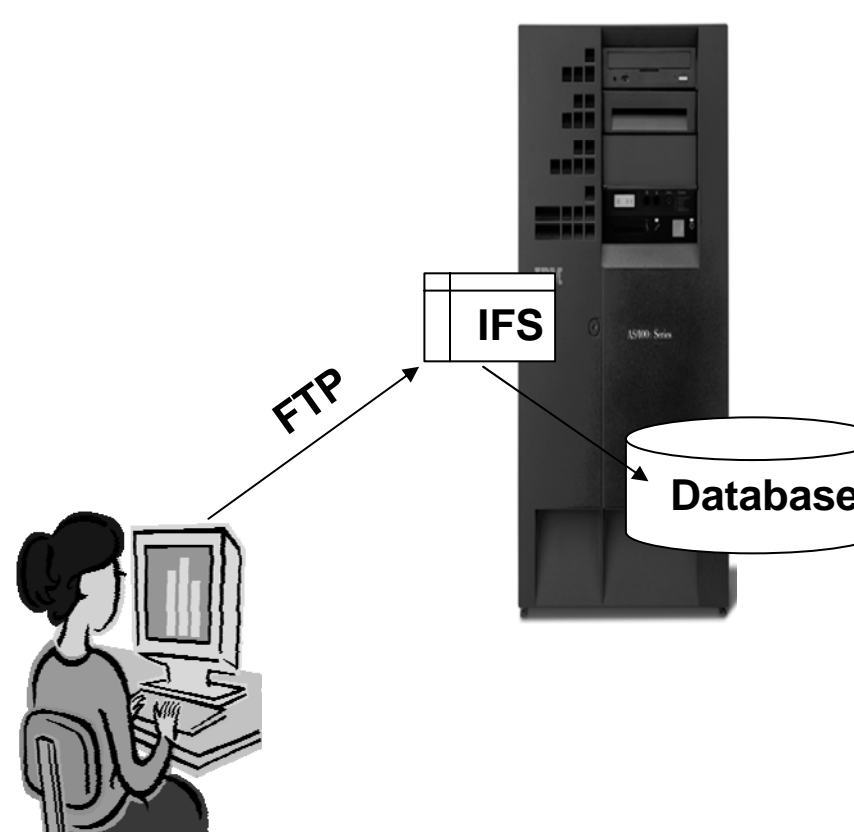
RTOPCB can now be scheduled to run at a given date and time



## Data Transfer Vs FTPs

Use Data Transfer rather than multi-step FTPs

- Rather than taking PC data and performing FTP to IFS then using CPYFRMPCD to get data into database format, use Data Transfer
- Same is true when getting data from the database to the PC (ie, CPYTOPCD)



## Data Transfer ActiveX Automation Objects



### What are Active X Automation Objects?

- ActiveX Automations are re-usable objects that reside on your Windows PC.
- Many times they can be used to run an application by "remote" with a program or script.
- They work similarly to Object Linking and Embedding (OLE), used for things like inserting an Excel spreadsheet into a WordPad document. Not just cutting and paste, actually "linking" the spreadsheet into the document.
- ActiveX objects work much like this, except in the programming world.

### What can they do for me?

- ActiveX automations can be used to quickly and easily perform many tasks with little or no user intervention.
- For example, a program may use the Automations for Microsoft Excel to perform various data calculations without ever bringing up the Excel interface.
- ActiveX automations can be used to create new custom interfaces over applications that have ActiveX automations.
- A few examples are Microsoft Office products, Internet Explorer, the PC5250 emulator, and various iSeries Access for Windows functions.

## Data Transfer ActiveX Automation Objects

ActiveX automations are supported by many programming languages including:

- Visual Basic
- Visual Basic for Applications (used by Microsoft Office)
- Visual Basic Script (used in web pages and the PC5250 emulator)
- C++
- Java
- Lotus Script
- Many other applications and development environments

You must write program code to use these objects. Or allow some development tool to write the code for you.

You can find information on the iSeries Access for Windows ActiveX automation objects in the iSeries Access for Windows Toolkit under the ActiveX section of the Database portion of the Toolkit documentation.

## Summary

### System i Access for Windows provides a single offering designed for Windows users that provides:

- High-function, easy-to-use 5250 emulator to work with System i host applications
- A PC print server that i5/OS or host application output can be sent to and run unattended
- Access to DB2 for i5/OS database and other resources from Windows applications
- Ability to use System i as file and print server
- Administer users and monitor/manage System i's in the network

### No special web application server code required

- All code runs natively on the Windows

### It's all in iSeries Access for Windows

- PC5250 emulation, Data Transfer, ODBC, etc for end users and Windows programmers
- iSeries Navigator to operate and administer System i's and database
- Operations Console to work with i5/OS system console
- EZ-Setup to quickly and easily set up new System i machines.



*This is the most comprehensive System i native Windows connectivity solution in the market*

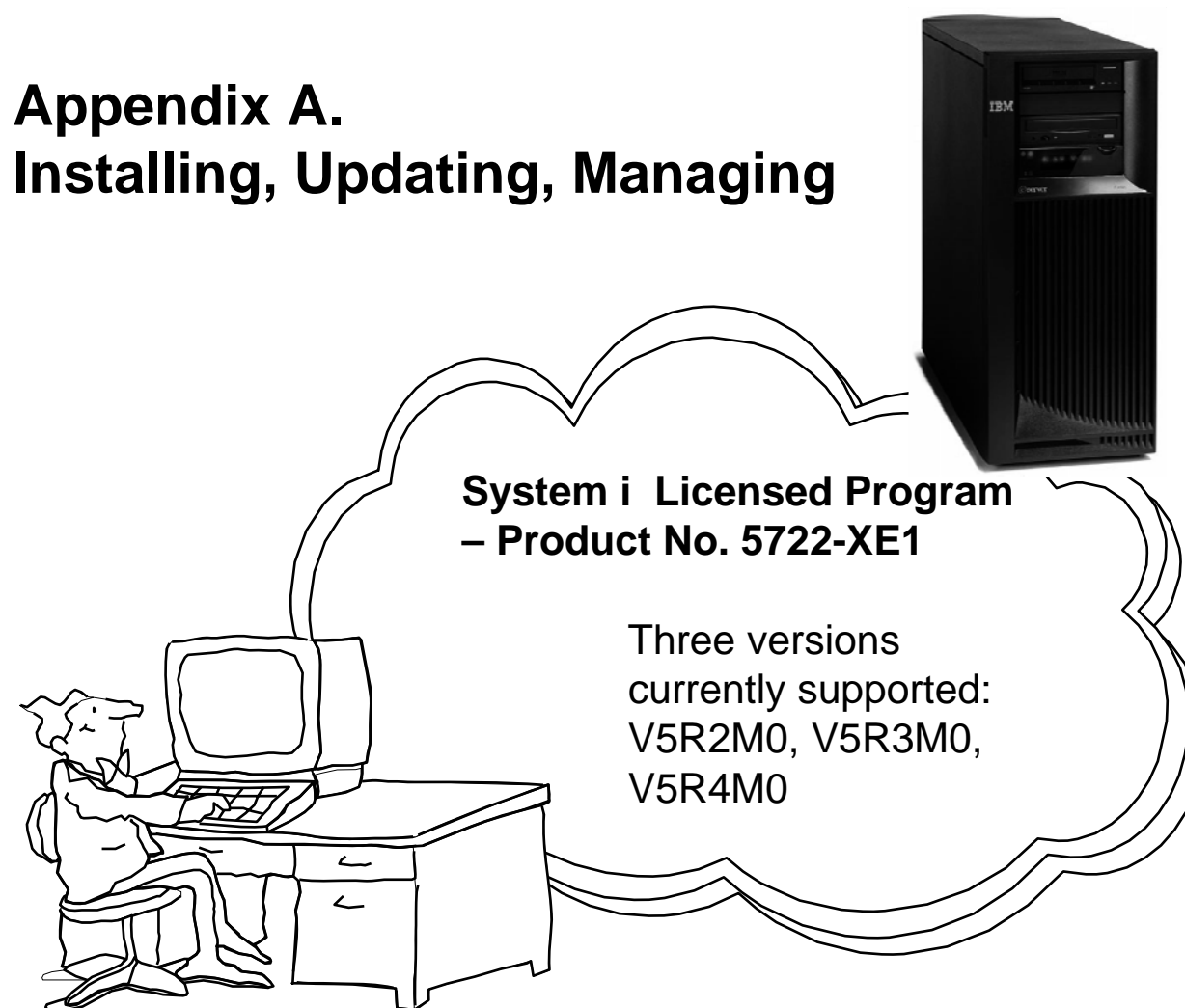
*80+% of System i customers already using System i Access for Windows*



## Other Functions in iSeries Access for Windows

**iSeries Navigator  
Operations Console  
EZ-Setup**

## Appendix A. Installing, Updating, Managing



## System i Access installed in IFS on System i

### System i Access clients Install Image placed in IFS in:

- \QIBM\ProdData\Access\Windows\Install\Image

### System i Access Service Pack placed in IFS in:

- V5R1 - Service Pack PTFs saved in the main install image--no extra reboot!
- But is likely to not be latest Service Pack available



### System i Access installs and services other products as part of its install from IFS

- SSL Encryption Program (V5R3), iSeries Toolbox for Java, Java Runtime Environment, iSeries Navigator, EZ Setup



### System i Access can be used to install and service other code placed in IFS:

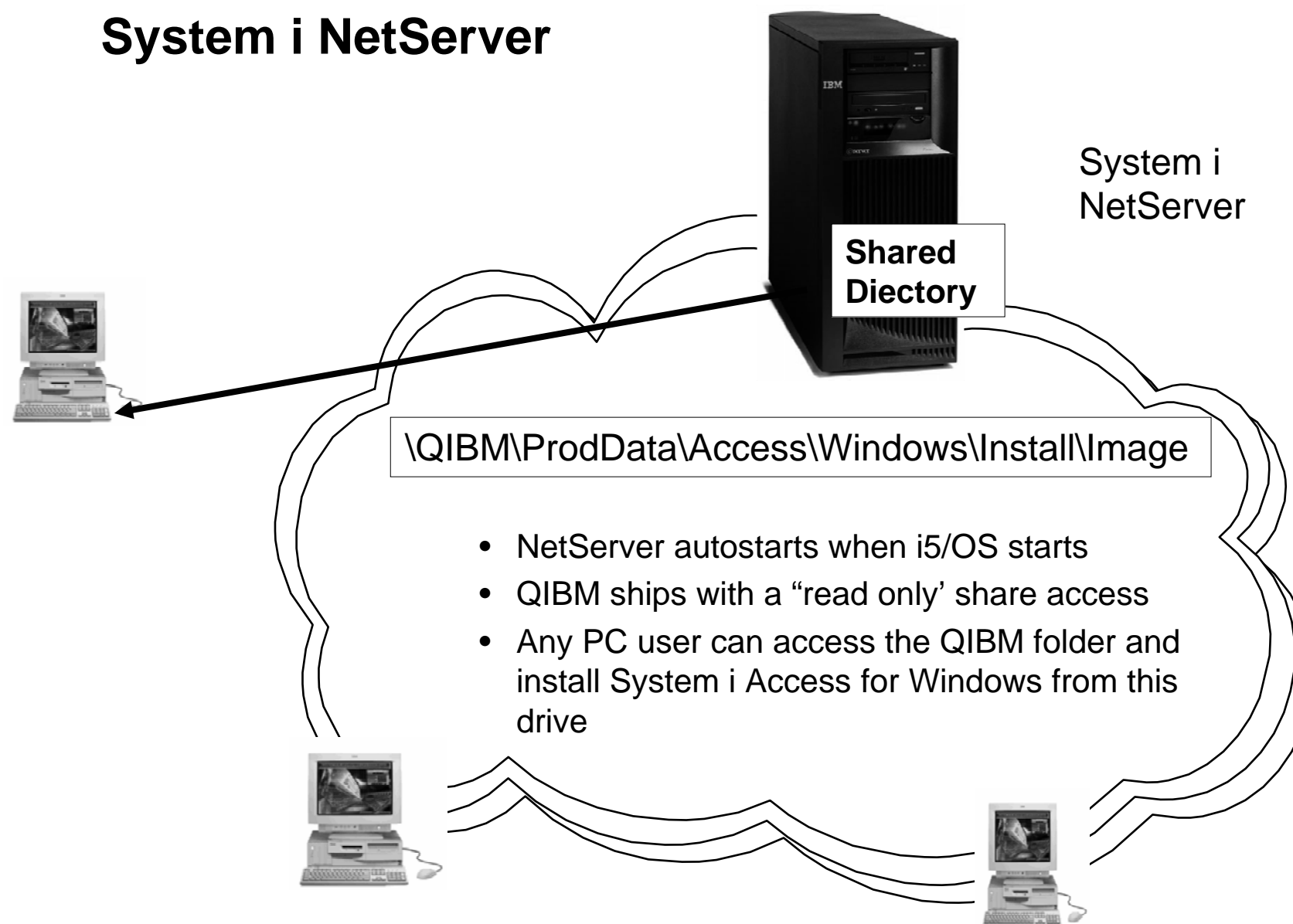
- iSeries Navigator Plug-ins, Add-ins

### PC CD also shipped with the product



- V5R2 - Can create Customized Install CD images

## System i NetServer



## Install and Service Pack Tips



### Make sure you have the latest Service Pack before rolling out new installs

- Roll out new clients from merged image and get new release and latest service pack in one step
- Merged install image eliminates the need for an extra reboot

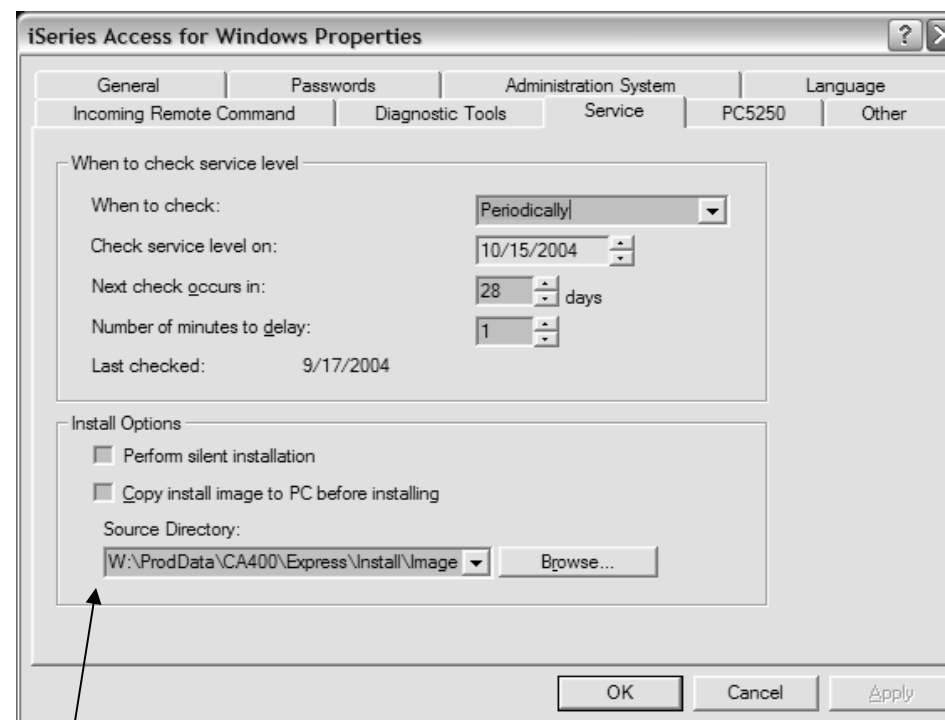
### Save disk space on PCs

- If a Service Pack has been well-tested, and you are confident in it, you can have your end-users install it without enabling service pack uninstall.
- This eliminates the need for an \Archive directory containing files from the previous service level.
- RMVPTF and reinstall from install image could be used to get back to the prior service level if necessary.

## System i Access for Windows handles updates

### Strategic way to handle service for end-users

- Automatic Check Service Level
- Check Service Level can also service:
  - iSeries Navigator Plug-ins
  - Secure Sockets Layer (SSL)



#### Note:

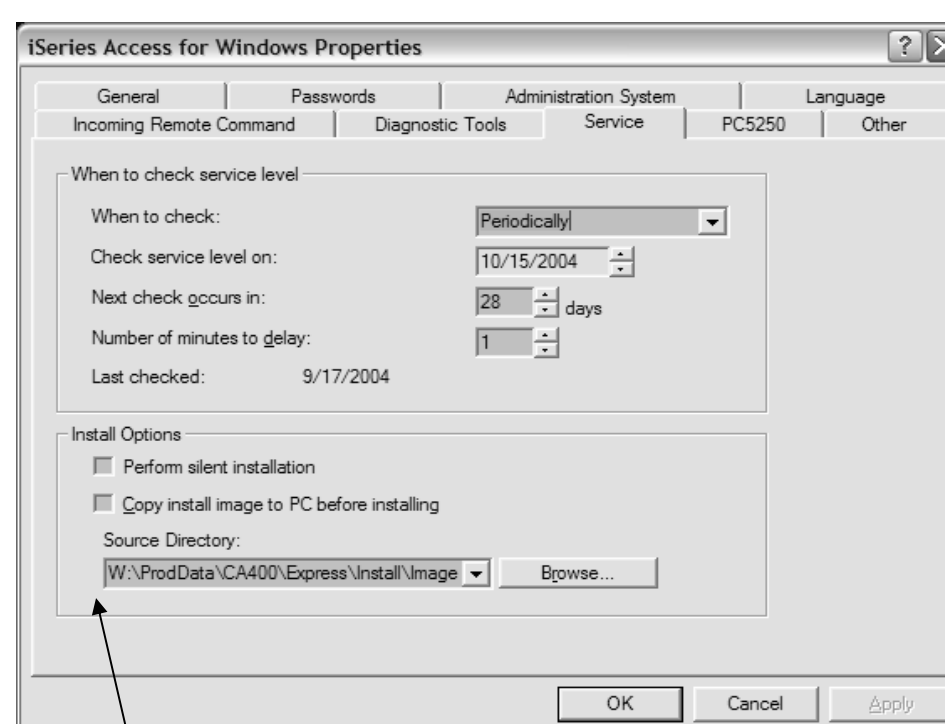
In example above, there was a Mapped Drive to W:\<iSeries>\QIBM, so iSeries Access for Windows filled in the rest of the address. Could also use service Source Directory of \\<iSeries>\QIBM to avoid assigning a persistent drive letter mapping

## Different methods of initially installing the code

If you install the code from the PC CD ROM that came with the product



- You have 'old' code
- You have no Service Packs
- The address plugged into the Check Service Level will be pointing at the D drive
  - So every 28 days, when System i Access for Web looks for something new it will be looking on the D drive on the user's machine



After installing from the PC CD, you could go in and change this address to point to QIBM directory. Then in 28 days, user would get updated with whatever Service Pack has been installed in QIBM.



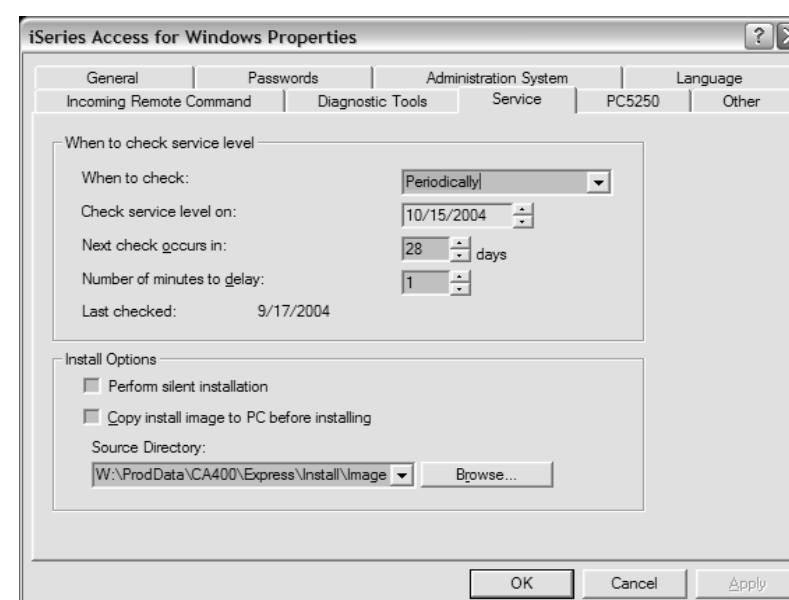
## Different methods of initially installing the code

You could install the code directly from QIBM directory

- You will be installing the code with some later Service Pack level
- QIBM will be plugged into the Check Service Level field
  - Every 28 days, System i Access for Windows will look for updates/new releases, and automatically download to user's desktop



*You'll never have to touch this PC again!*



## Install and Service Pack Tips

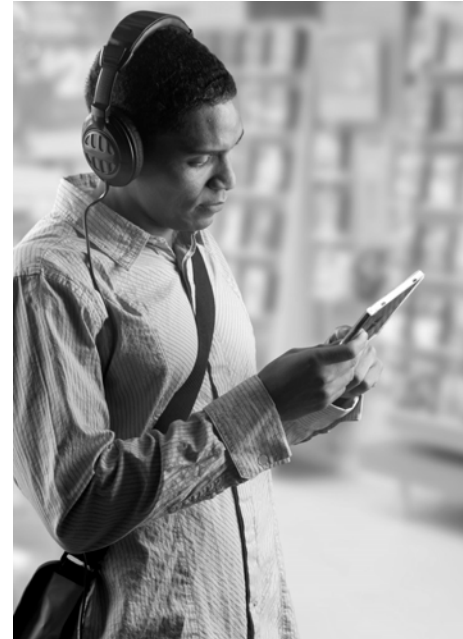
Keep end-users from installing a service pack until you are ready



- Text file SP.TXT placed in the service pack image directory can prevent anyone from installing the service pack until you are ready
  - 'N' as the 1st character in the file prevents install
  - 'Y' or no SP.TXT file at all will allow the install
 Second text line can contain a message to users that will appear during Check Service Level
- Same method used to prevent all end-users from upgrading via Check Service Level to a new release
- Additional control values for a merged image:
  - 'U' allows an upgrade, but stops a service pack
  - 'S' allows a service pack, but stops an upgrade

*Documented in User's Guide - look in Index for 'SP'*

## Service Packs



## FTP Service Packs for Testing

Suggest using FTP download for validation testing

Don't place downloaded Service Pack in the System i LPP (QIBM directory, ie, \InstallImage) because:

- It will interfere with APYPTF
- Check Service Level (by default) looks in the QIBM directory for updates

Place in another directory on System i IFS or on another system or on a PC server

The screenshot shows the 'iSeries Access' page with a table titled 'Latest Service Packs for Supported Releases'. The table has columns for 'iSeries Access for Windows (5722-KE1) Release Level', 'Latest Service Pack PTF Number', 'Server Maintenance', 'Date PTF was Available', 'Installed File Date', and 'Target for Next Service Pack'.

iSeries Access for Windows (5722-KE1) Release Level	Latest Service Pack PTF Number	Server Maintenance	Date PTF was Available	Installed File Date	Target for Next Service Pack
VSR4M0	S124893	Corea and Server Notes	August 31, 2006	September 3, 2006	December 22, 2006
VSR3M0	S124723	Corea and Server Notes	August 9, 2006	June 9, 2005	February 9, 2007
VSR2M0	S123978	Corea and Server Notes	May 31, 2006	August 12, 2005	None planned

<http://www.ibm.com/eserver/series/access/casp.htm>

## Get fixes from IBM

Order Service Packs through normal IBM channel and install on System i

Cummulative PTF Package - Service Packs are included with these packages too, but may not be the latest one available

Send PTF Order (SNDPTFORD) - will send you a CD because image is too big to download over Internet

Fix Central – new in V5R3

(L/000/Me/XP/etc)

Technical Support

Articles

IBM Library

Toolkit

Series Information Center

Latest Service Packs for Supported Releases

- To see service packs for every release, refer to [Service Pack History for All Releases](#).
- For problems downloading a service pack, [click here](#).
- For support information on iSeries Access and the Microsoft Windows operating systems, [click here](#).

iSeries Access for Windows (5722-XE1) Release Level	Latest Service Pack PTF Number	Server Maintenance	Date PTF was Available	Installed File Date	Target for Next Service Pack
V5R4M0	SI24893	<a href="#">Coren and Server Notes</a>	August 31, 2006	September 3, 2006	December 22, 2006
V5R3M0	SI24723	<a href="#">Coren and Server Notes</a>	August 9, 2006	June 9, 2005	February 9, 2007
V5R2M0	SI23978	<a href="#">Coren and Server Notes</a>	May 31, 2006	August 12, 2002	None planned

Problems downloading a Service Pack?

Try one of these:

- Review the Software Knowledge Base Article: [Problems Downloading Files from the FTP Site, including Client Access Service Packs](#).
- Order the PTF to install on your iSeries:
  - Use SNDPTFORD to order the PTF (product 5722XE1) and install it on your iSeries. Since the service pack PTFs generally exceed the size limit to be sent electronically, you can receive the PTF on media by changing the "Delivery Method" (DELIVERY) parameter on SNDPTFORD to "ANY". (The parameter defaults to "LINKONLY".)
  - Use Fix Central. Fix Central for iSeries allows you to search, select, order, and download fixes to your iSeries system with a choice of delivery options. To learn about this service and the requirements, go to the [iSeries Support: Fixes](#) page and select Fix Central.

## Fix Central

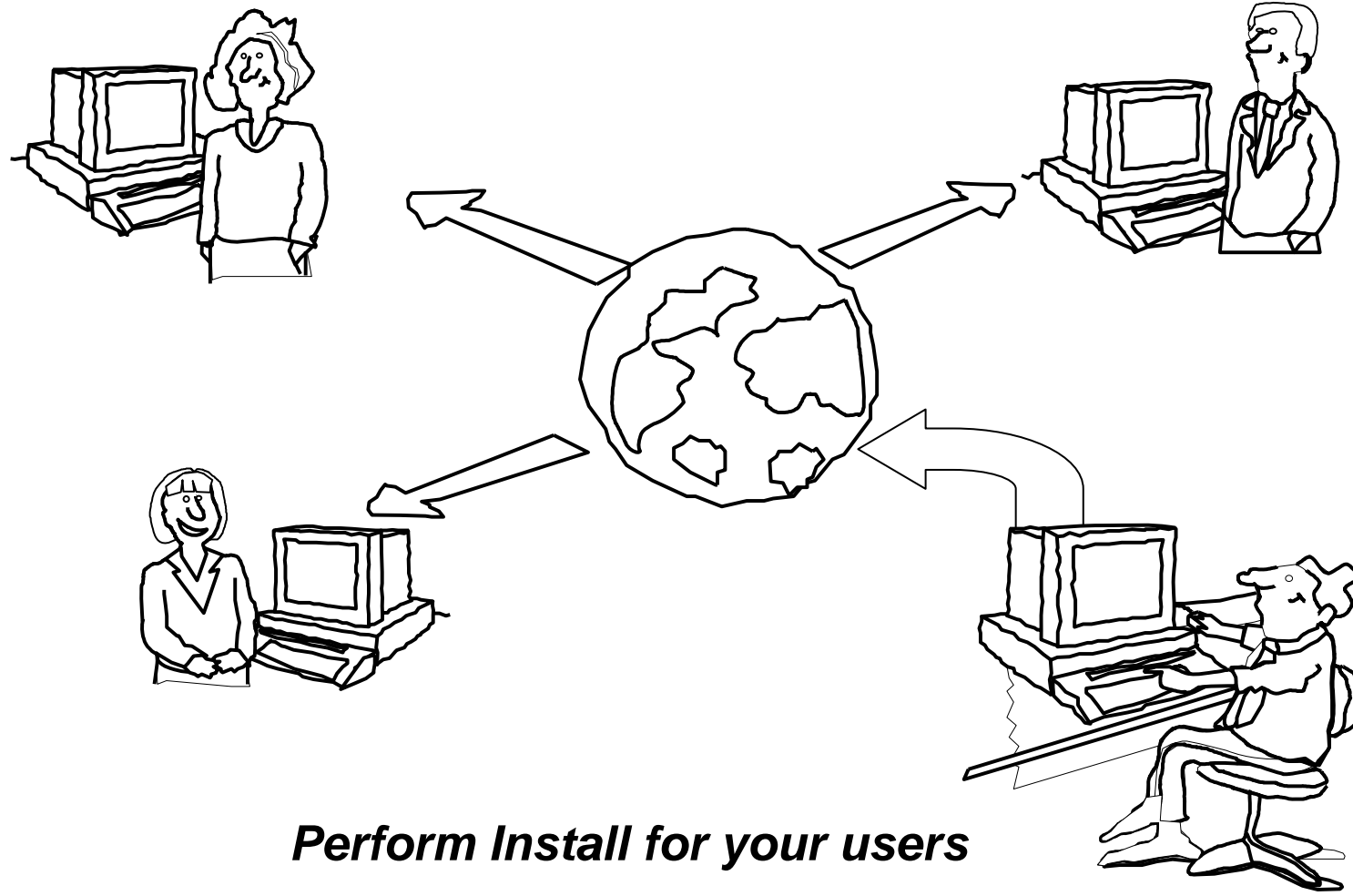
<http://www-03.ibm.com/servers/eserver/support/series/fixes/index.html>

Fix Central for System i allows you to download fixes directly to the system or they can be ordered on virtual CD media that can be downloaded and loaded into an image catalog or burned to a physical CD for later use.

- Can download fixes for System i on demand.
- Can create a customized PTF package based on the operating system, features, and products installed on your system.
  - By using this feature, you only need to review the cumulative PTF packages, group PTFs (including HIPER and Database), and individual PTFs that your system currently needs.

To use these new features you must:

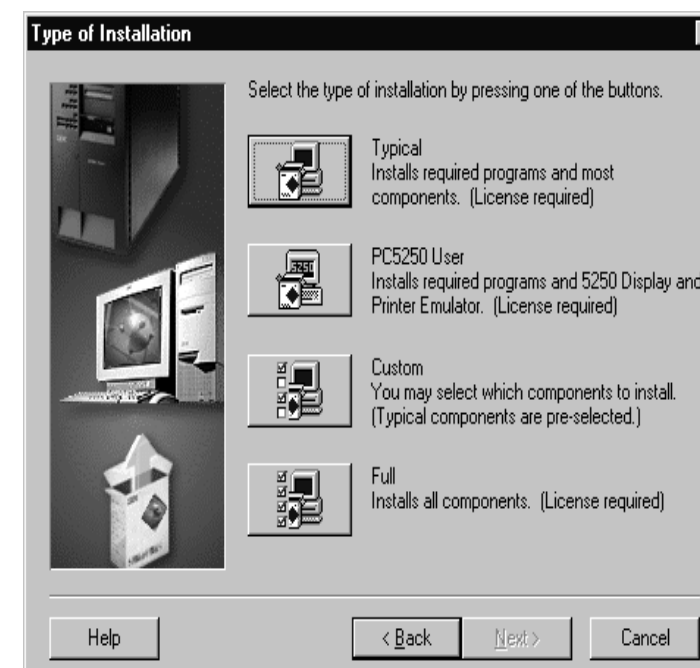
- For i5/OS V5R4, the functionality is built-in to the operating system.
- For i5/OS V5R3, you must install PTF [SI19413](#), and other requisites



## Installation Types

### Install Options

- **Typical**
  - Not best option, as much of iSeries Navigator gets installed
- **PC5250 User**
  - Only 5250 emulation installed
- **Custom**
  - Best option, but most confusing
- **Full**
  - Installs everything
  - Has new meaning with Tailored Install function



*Too complicated for typical end users*

## Tailored Install

*You can control which components of System i Access for Windows get installed on your users' desktops*



### Use Tailored Install to:

- Create a custom installation image by excluding the unwanted components from a master installation image.
- Use this customized installation image for installations across your network
- Users can easily install iSeries Access functions by selecting a single option



IBM System i IBM

## Steps to set up your own 'Tailored' Install

**Stored in Access\Windows folder**

- QIBM -->
- ProdData -->
- Access -->
- Windows -->
- Install -->
- Image -->

**Start Cwbinimg.bat program**

**Find the Tailored Install Wizard**

Name	Size	Type	Modified
AUTORUN.INF	1 KB	Setup Information	2/20/2002 8:59 AM
BASE1.CAB	2,034 KB	Cabinet File	6/9/2003 2:05 PM
BASE1.HDR	24 KB	HDR File	6/9/2003 2:05 PM
BASEMR11.CAB	5,786 KB	Cabinet File	4/24/2002 4:42 AM
BASEMR11.HDR	8 KB	HDR File	4/24/2002 4:41 AM
CWBCOMSG.DLL	56 KB	Application Extension	4/24/2002 4:42 AM
CWBIN641.INI	1 KB	Configuration Settings	6/9/2003 2:06 PM
CWBIN641.MSI	3,086 KB	Windows Installer P...	6/9/2003 2:06 PM
CWBINDLG.DLL	885 KB	Application Extension	2/20/2002 8:59 AM
CWBINIMG.BAT	1 KB	MS-DOS Batch File	2/20/2002 8:59 AM
CWBINIMG.INS	335 KB	Internet Communic...	2/20/2002 8:59 AM
CWBINRES.DLL	532 KB	Application Extension	4/24/2002 4:42 AM
CWBINSII.EXE	120 KB	Application	2/20/2002 8:59 AM

69
*i want an i.*
© 2007 IBM Corporation

IBM System i IBM

## Run Wizard to create a Tailored Install Image

**Run Tailored Install wizard**

**Select where you want this saved**

- Could be in IFS on System i or PC server...

70
*i want an i.*
© 2007 IBM Corporation



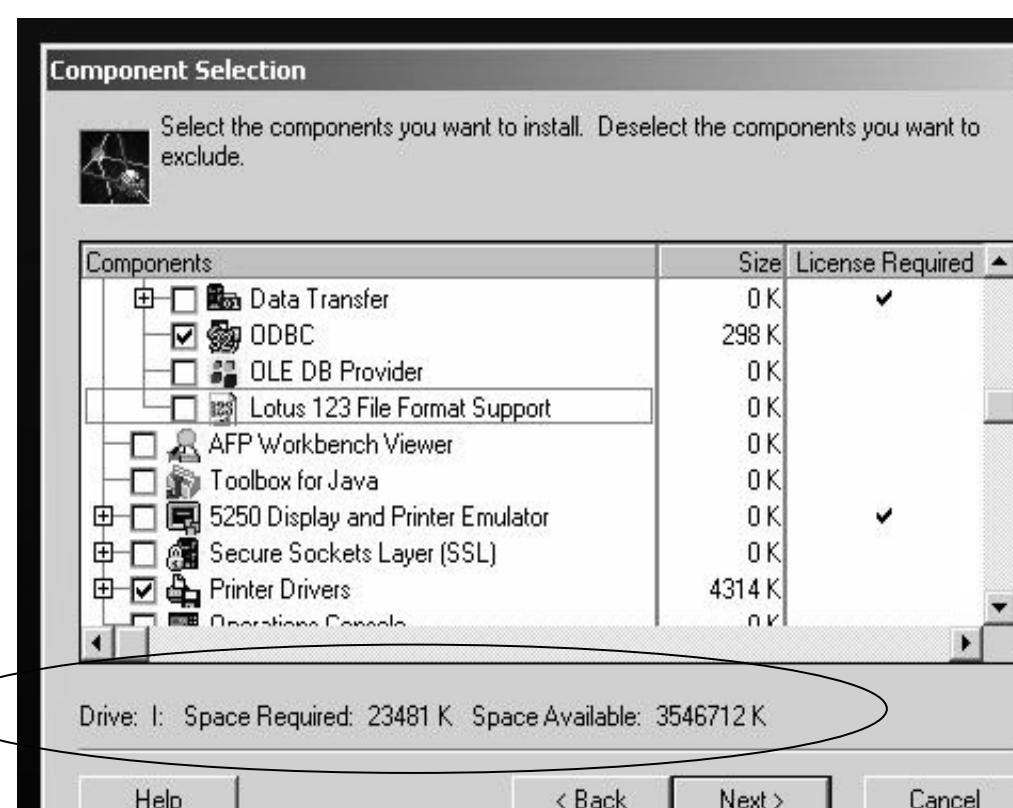
## Example

Build tailored install that only enables end users to install only ODBC and Printer drivers

Deselect all items you don't want users to use. Program will tell you if there is a pre-req you must install

Note: this option requires 23MB of space.

Only want to provide ODBC and Printer Drivers for some of your users

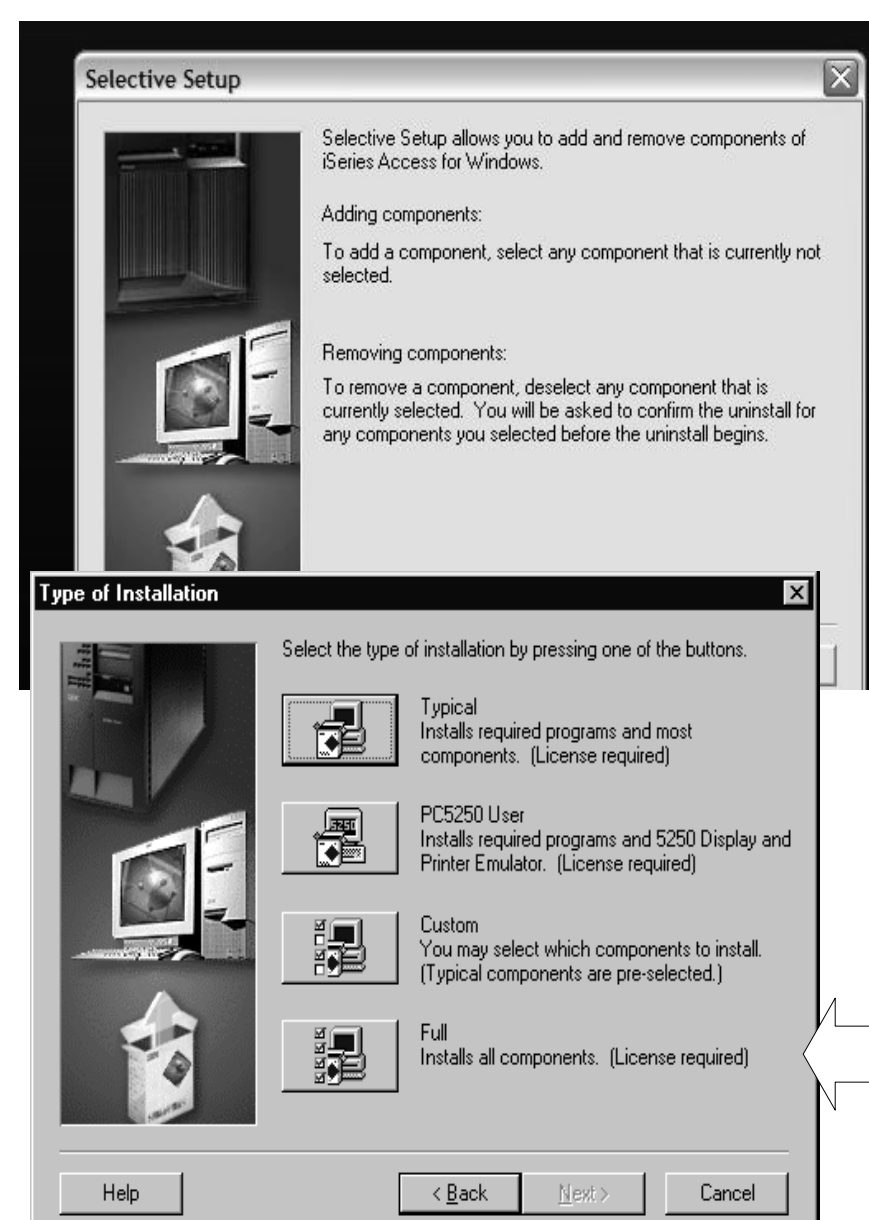


## Use Full Install

Users now simply:

- Point to Folder where the Tailored Install is
- Click on 'Setup.exe' to start the iSeries Access for Windows Install Program
- Select 'Full' install
  - Users get only the functions you created in the Tailored Install

Note: If stored on System i, you can use i5/OS authorities to identify which users or groups can access selected images





## Servicing the Tailored Install Image

### Problem

- When you create the Tailored Install, the Program Temporary Fixes (PTFs) in the QIBM directory are also applied to the newly created tailored image.
- However, this tailored installation image is not updated when future PTFs are applied to or removed from System i
- Because they are in a file unknown to the host install (APYPTF) programs

### Solution

1. You can recreate the Tailored Install image by pointing back at QIBM, re-running Tailored Install, and storing on top of your old image.
2. Go to iSeries Access web site and download PTFFORM. This can be used to your Tailored Image.
  - Only updates to functions in your tailored image will be updated. Thus users will not be able to run Selective Install and get additional Access for Windows functions from that directory.

For information on Tailored Install images see:


<http://publib.boulder.ibm.com/pubs/html/as400/infocenter.html> , find 'iSeries Access' → 'Administration' → 'Installing or migrating multiple PCs' → 'Tailored Install'

## PTFFORM

Use PTFFORM to add new Service Pack to Tailored Install image

iSeries Access for Windows (5722-XT0) Release Level	Latest Service Pack PTF Number	Server Maintenance	Date PTF was Available	Installed File Date	Target for Next Service Pack
V5R4M0	SI22257	<a href="#">Coreq and Server Notes</a>	February 21, 2006	02/01/2006	May 12, 2006
V5R3M0	SI21917	<a href="#">Coreq and Server Notes</a>	January 27, 2006	06/07/2005	April 28, 2006
V5R2M0	SI18400	<a href="#">Coreq and Server Notes</a>	November 18, 2005	08/11/2002	June 2, 2006

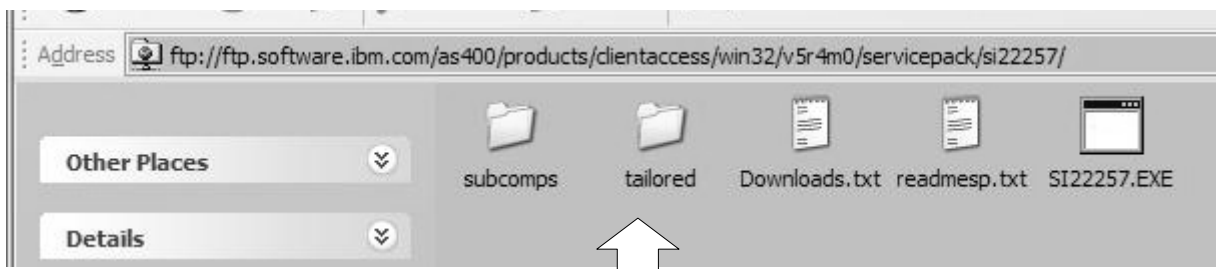
1



3

PTFFORM only puts in fixes for code that is contained in Tailored Install image

2



Address: ftp://ftp.software.ibm.com/as400/products/clientaccess/win32/v5r4m0/servicepack/si22257/

subcomps tailored Downloads.txt readmesp.txt SI22257.EXE

[www.ibm.com/eserver/iseries/access](http://www.ibm.com/eserver/iseries/access)



## Downloads – for file/program distribution

<http://<myseries>/webaccess/iWAPackages>

**Mechanism to distribute files / programs to users**

**Administrator can create downloads**

**Management functions included for updating downloads and for controlling access to them**



### Downloads

« « « [1] » » »

Name	Description	File	Size	Action
iSeries Access for Linux (i386)	iSeries Access for Linux contains a full 5250 emulator and an enhanced ODBC driver. For more information see <a href="http://www.ibm.com/eserver/iseries/access/linux/">http://www.ibm.com/eserver/iseries/access/linux/</a> .	iSeriesAccess-5.2.0-1.4.i386.rpm	3,315,790	Download
iSeries Access for Linux (PPC)	iSeries Access for Linux contains a full 5250 emulator and an enhanced ODBC driver. For more information see <a href="http://www.ibm.com/eserver/iseries/access/linux/">http://www.ibm.com/eserver/iseries/access/linux/</a> .	iSeriesAccess-5.2.0-1.4.ppc.rpm	3,507,997	Download
iSeries Access for Windows (Database)	iSeries Access for Windows ODBC driver, .Net provider, and Data Transfer. For more information see <a href="http://www.ibm.com/eserver/iseries/access/windows/">http://www.ibm.com/eserver/iseries/access/windows/</a> .	iSeriesAccess-DB-5.3.0-S116496.exe	18,226,118	Download
iSeries Access for Windows (PC5250)	iSeries Access for Windows 5250 emulator and print drivers. For more information see <a href="http://www.ibm.com/eserver/iseries/access/windows/">http://www.ibm.com/eserver/iseries/access/windows/</a> .	iSeriesAccess-PC5250-5.3.0-S116496.exe	26,613,313	Download
iSeries Access for Windows (PC5250 and Database)	iSeries Access for Windows 5250 emulator, print drivers, ODBC driver, .Net provider, and Data Transfer. For more information see <a href="http://www.ibm.com/eserver/iseries/access/windows/">http://www.ibm.com/eserver/iseries/access/windows/</a> .	iSeriesAccess-PC5250-DB-5.3.0-S116496.exe	35,806,825	Download
Windows AFP Viewer Plug-in	The AFP Viewer plug-in lets you view AFP documents from a Web browser.	gnsp32dm.exe	9,997,972	Download

**V5R4 shipped view**  
Users can download Access for Linux and AFP Viewer Plug-in products

Check this out at <http://iseriesd.dfw.ibm.com/webaccess/iWAHome>,  
Userid = BOATADMIN; Password = demo2pwd



## Silent Install

### Can be used for:

- Initial Install
- Upgrades to a new release
- Service Packs

A way to restrict the set of initial components that an end user receives

Allows you to quickly and easily copy duplicate installations across your network

Eliminates the need for end users to have to respond to any prompts during the installation process

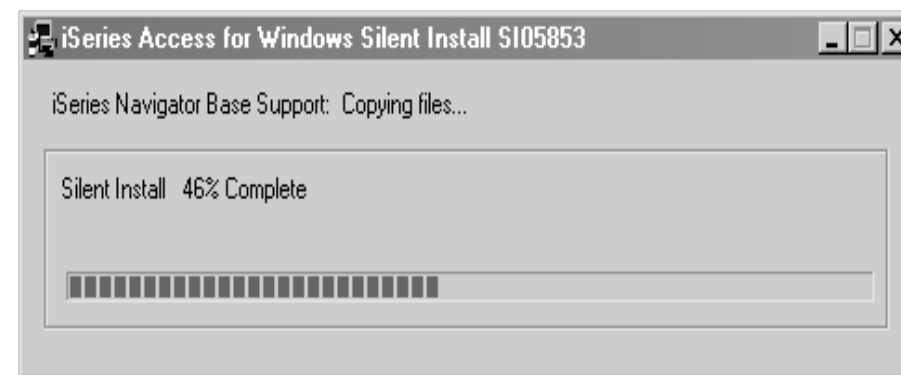
Can be used for upgrades, selective setup, and service packs.

- Upgrades and service packs should launch setup.exe from the install source.
- Selective Setup should launch setup.exe from the PC's ...\\Client Access directory

## Silent Install

### Silent Install indicator

- **Appears in task tray on end-user's PC during silent install**
- **Silent install failure leaves indicator active**
- **Double-clicking indicator shows failure point**



*Really silent!*

## Using Silent Install

### Create a response file

- A response file records the selections made in response to the prompts in the installation process.
- You perform the desired type of install on your PC, recording installation choices into install scripts (.iss files)
  - For example, `setup.exe -r -f1C:\MyDir\v5r2v5r3upg.iss`

### Start the silent installation

- During a silent installation, the setup program will use the response file to get the information necessary to complete the installation
- Schedule or run `setup.exe` on the end-user PC's with the proper parameters specifying the response file location (or use `CheckService Level`)
  - For example, `setup.exe -s -f1\\iSeries\Express\Response\v5r2v5r3upg.iss -f2C:\Temp\v5r2v5r3upg.log`

### Check the log file return codes to see if your install was successful

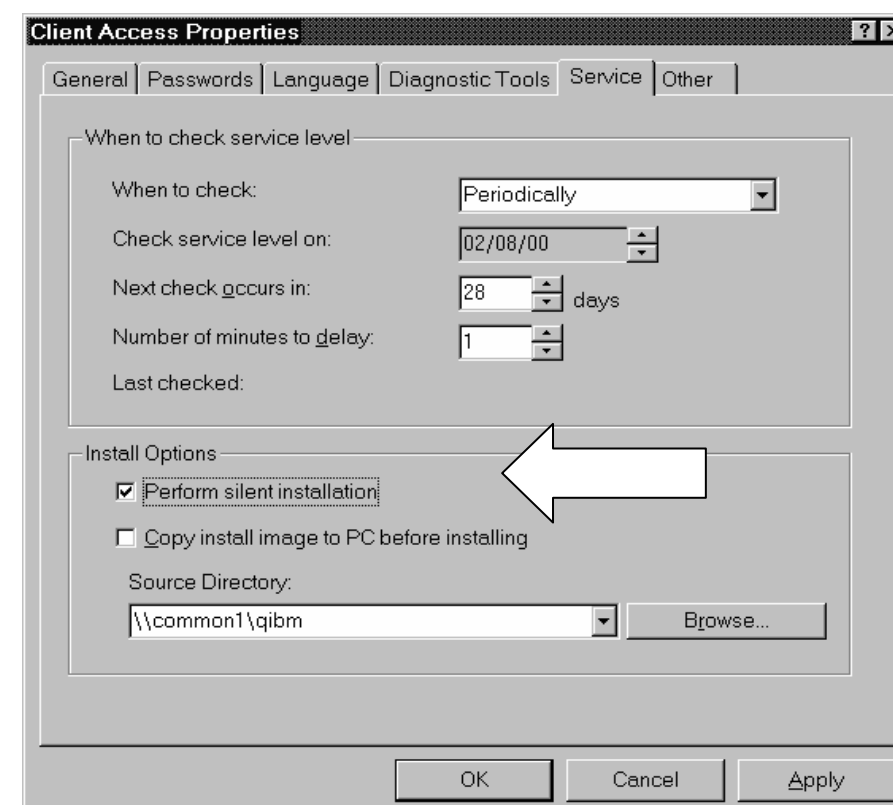
- The Log file tracks installation results. You can specify location/name of the Log file
- `Silent.txt` file in the `...\Client Access` directory lists the components installed silently and successfully

## Check Service Level for Silent Installs

### Use this for Service Packs and Upgrades

**Eliminates the need for confusing command line parameters, but does require specific names for the response files**

- SLTSP.ISS - for service packs (This file must reside in the same directory as the service pack image)
- SLTUP.ISS - for upgrades (This file must reside in the same directory as the upgrade image)



- If rebooting automatically, consider using SCHEDCHECK parameter on cwbackver.exe and schedule during the middle of night. Look in online iSeries Access for Windows User's Guide index for cwbackver for more information on the SCHEDCHECK parameter
- If not rebooting automatically, Check Service Level will come out of silent mode and prompt user for reboot

## Errors using Silent Install

**Most silent install errors involve a dialog out of order from what was recorded (-12 return code in silent log)**

- **The best way to debug this is to start a manual install on the failing PC and proceed through the install wizard panels until the confirm panel prior to file transfers**
- **The majority of the dialog errors occur prior to the confirmation panel**
- **See if any unexpected dialogs appear that were not anticipated during recording**

## Silent Install Upgrade and Service Pack Install Tip



### Use Incoming Remote Command component of iSeries Access for Windows with Silent Install Upgrades or Silent Service Pack Installs

- **Start service on NT/2000/XP/2003 client**
  - Specify to log on as Local System Account to satisfy Administrator authority restriction needed for install
  - No need to "Allow Service To Interact With Desktop" for a Silent Upgrade or Service Pack Install
- **RUNRMTCMD on iSeries specifying setup.exe/setupsp.bat and userid/password of Administrator account on PC**
  - RUNRMTCMD  
 CMD('w:\proddata\Access\Windows\install\image\setupsp.bat -s -f1\\myserver\silentshare\sltsp.iss') RMTLOCNAME(PCNAME \*IP) RMTUSER(PCUSER) RMTPWD(PCPASSWD)
- **REXEC from a TCP/IP client can also be used to submit setup.exe**

## Silent Install Documentation

Detailed information on Silent Install is on the web in the IBM iSeries Information Center

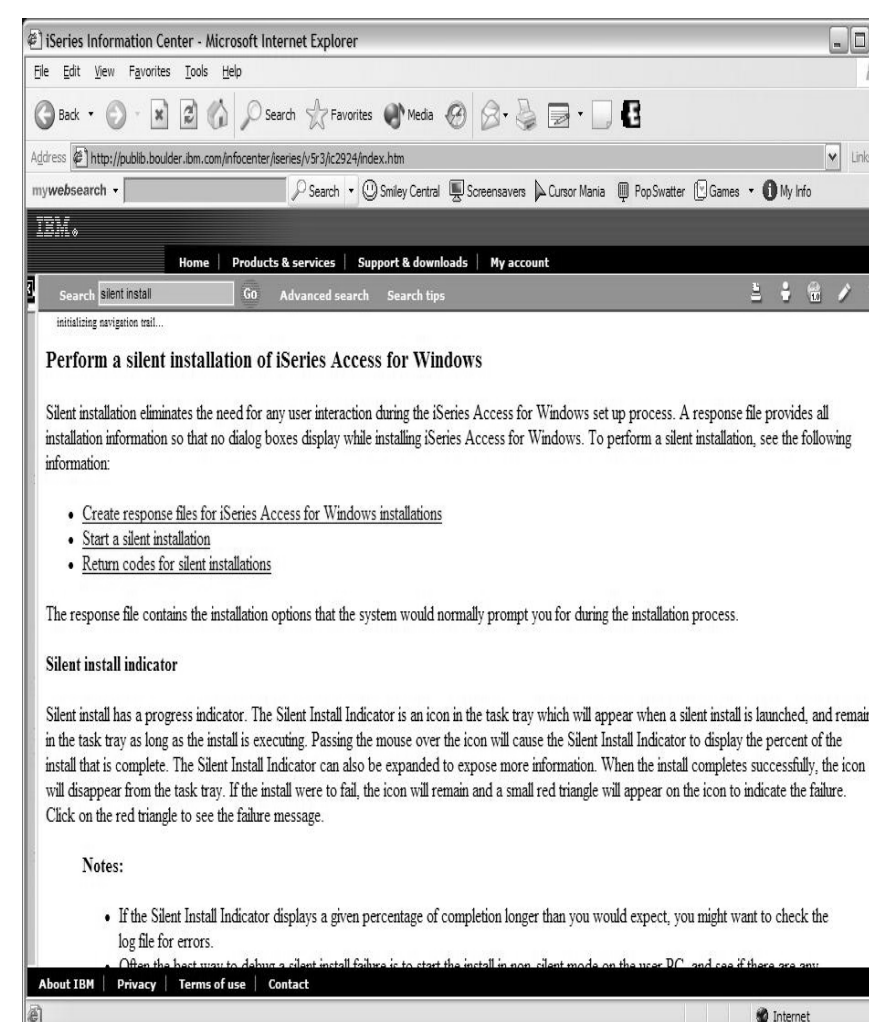
Get there by going to iSeries Access web page at:

- [www.ibm.com/eserver/iseries/access/windows](http://www.ibm.com/eserver/iseries/access/windows)
- then select **iSeries Information Center** from sidebar

Or go to:

- <http://publib.boulder.ibm.com/pubs/html/as400/infocenter.html>

Search on Silent Install





## Administration

### Redbook for administering iSeries Access for Windows users

- SG24-6939
- Available Feb 2004

### Go out to iSeries Access for Windows web page

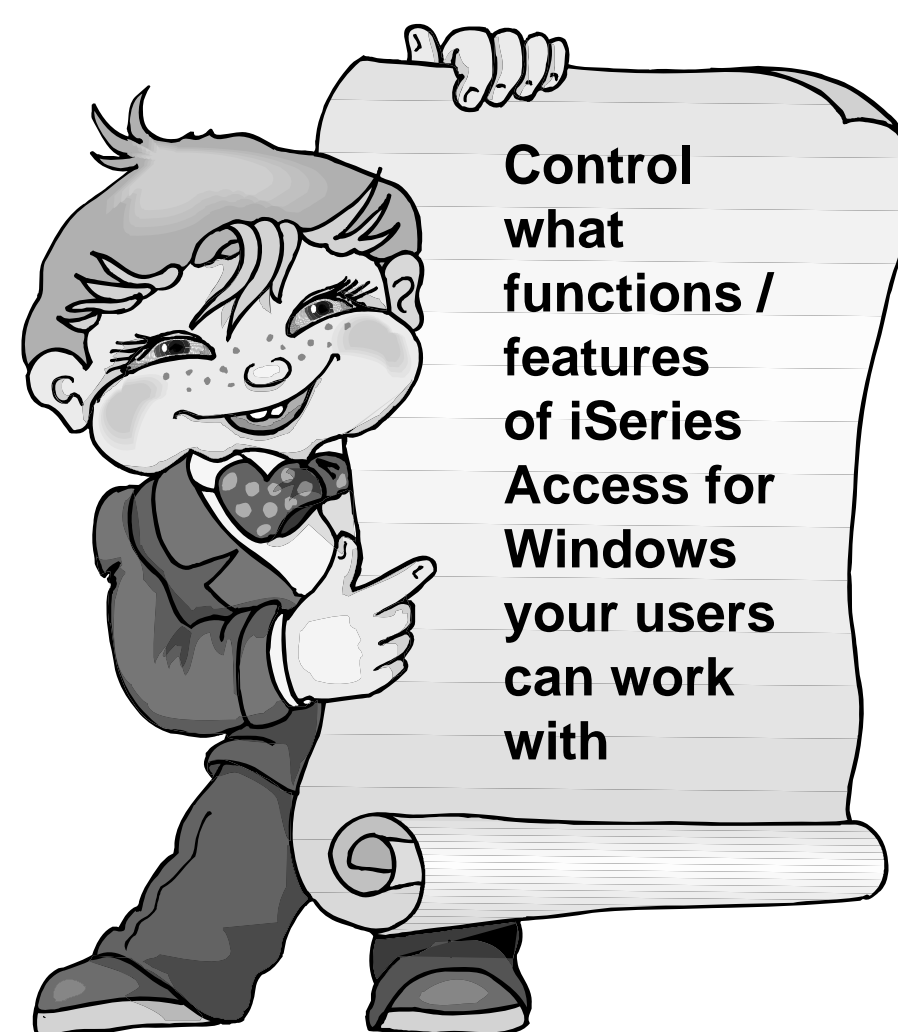
- [www.ibm.com/eserver/iseries/access/windows](http://www.ibm.com/eserver/iseries/access/windows)
- Click on New Redbooks link

### iSeries Access for Windows V5R2 Hot Topics: Tailored Images, Application Administration, SSL, and Kerberos

Speeding up your multiple workstation install  
using a tailored image

Centralizing your Application  
Administration tasks

Securing your connections with  
SSL and Kerberos single sign on





## Control Access to iSeries Access for Windows

### Policy Administration

- Based on Microsoft System Policy support
- PC user has one set of policies for connectivity to all System i
- Can set policies on a specific PC as well as users and groups
- Can be used to 'configure' as well as restrict functions
- Over 150 policies available!
- Uses Microsoft System Policy Editor and Client Access Policy templates

### The Microsoft Way...

- Preferred method for those familiar or already using Microsoft System Policies

### Application Administration

- Based on OS/400 user profiles -- thus supports users and groups
- User profile can roam with user (from any PC)
- A user can have different profiles for different System i's
- Can restrict usage of Operations Navigator functions, Client Access functions, APIs available for use by other plug-ins
- Easy-to-use Operations Navigator GUI

### The System i Way...

- Preferred method for those who want to control access via i5/OS user profiles

## Using Policies: Get the Microsoft System Policy Editor

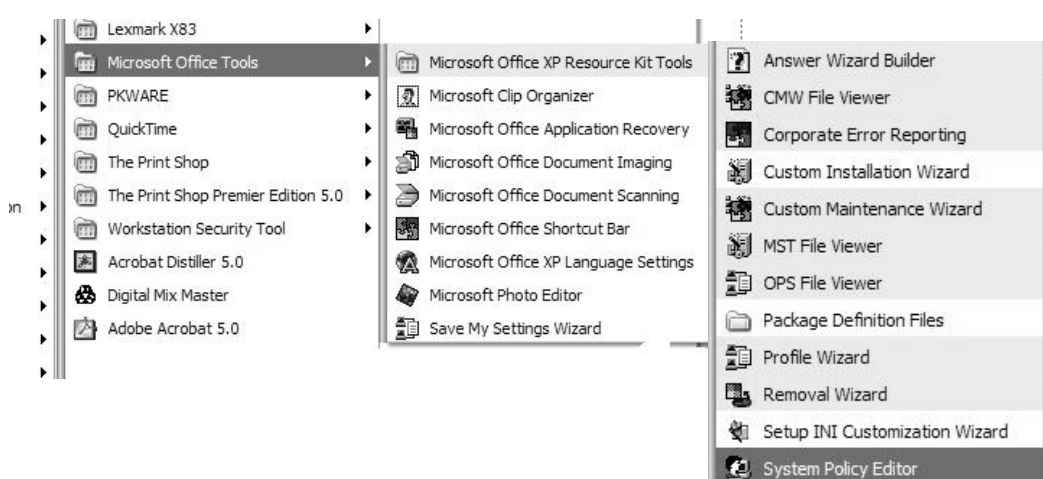
### Go to Microsoft web page and download and install "Office Resource Kit"

- <http://www.microsoft.com/windows/default.msp>
- Search on 'download system policy editor'

### The Microsoft System Policy Editor is in the Office XP Resource Kit

- To find it click:
  - Start → Programs →
  - Microsoft Office Tools →
  - Microsoft Office XP Resource Kit Tools → System Policy Editor

**Note:** Get the Policy Editor which matches your Windows Operating System



## Create iSeries Access for Windows Templates

### Create iSeries Access for Windows Policy Templates that can be used with the Microsoft System Policy Editor

- Run iSeries Access for Windows CWBADGEN utility to create the templates
- CWBADGEN is in Program Files/IBM/Client Access path
- On a DOS prompt, run CWBADGEN /std to create the templates

```

Command Prompt
(C) Copyright IBM Corporation and Others 1984, 2003. All rights reserved.
U.S. Government Users Restricted Rights - Use, duplication or disclosure
restricted by GSA ADP Schedule Contract with IBM Corp.
Licensed Materials - Property of IBM

Usage: cwbadgen [/ps <fileName>] [/cfg <fileName>] [/std]

Examples:
cwbadgen /ps S1034345
    Generates per-system template for system S1034345.
    Output filename is S1034345.adm

cwbadgen /std
    Generates caecfg.adm, caeinsrt.adm, and caerestr.adm

cwbadgen /cfg config.adm
    Generates info to configure systems and environments from
    existing configuration information. Output filename is
    config.adm

C:\Program Files\IBM\Client Access>cwbadgen /std
  
```

## Create Policies (example PC5250)

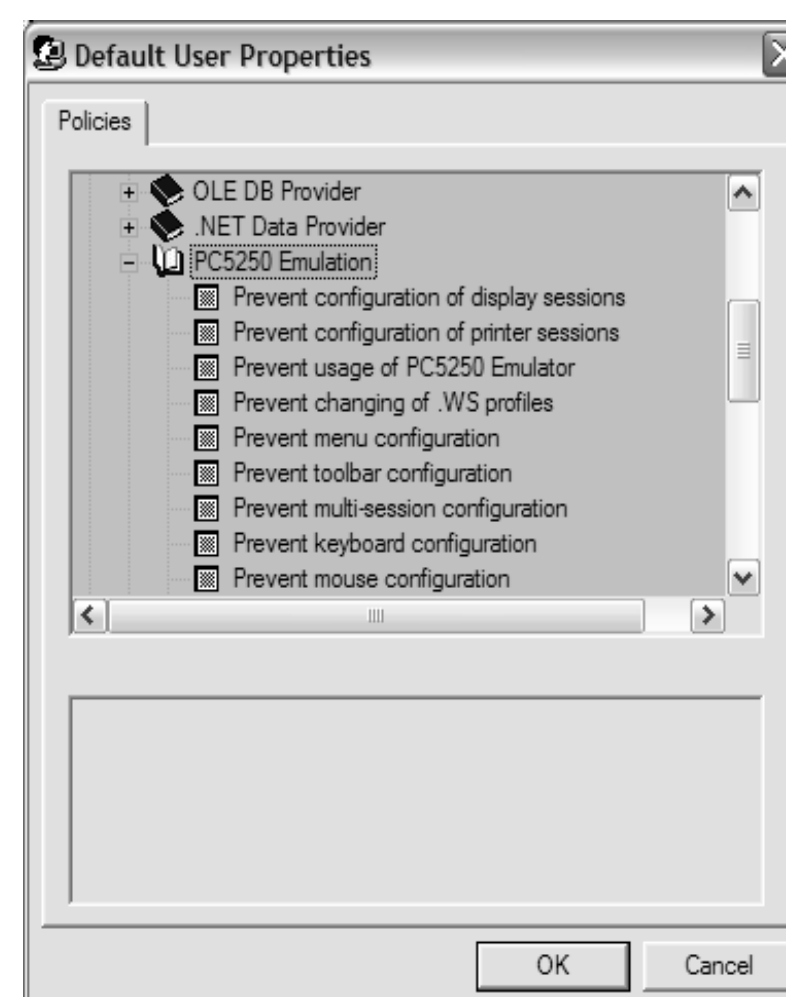
Start Microsoft System Policy Editor and from toolbar select:

Options → Policy Editor → Add

- Go to the Program Files/IBM/Client Access directory and select the caerestr.adm file that was created by CWBADGEN utility and add it to the Microsoft System Policy Editor list

File → Open Registry → Local User

- Double click on the IBM iSeries Access Runtime Restrictions template
- Select PC5250 emulation and set the restrictions you wish to impose, then click OK.



## Application Administration Overview

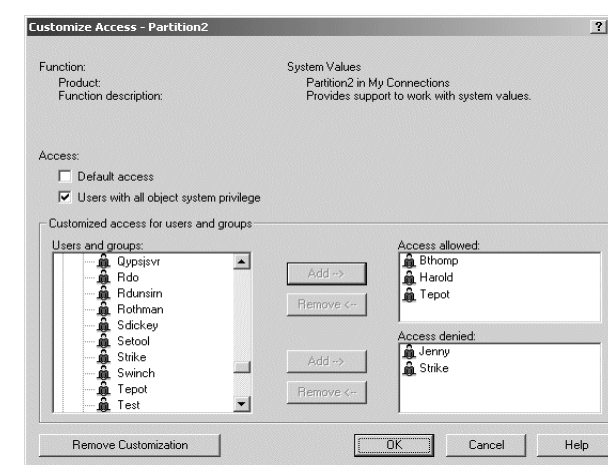
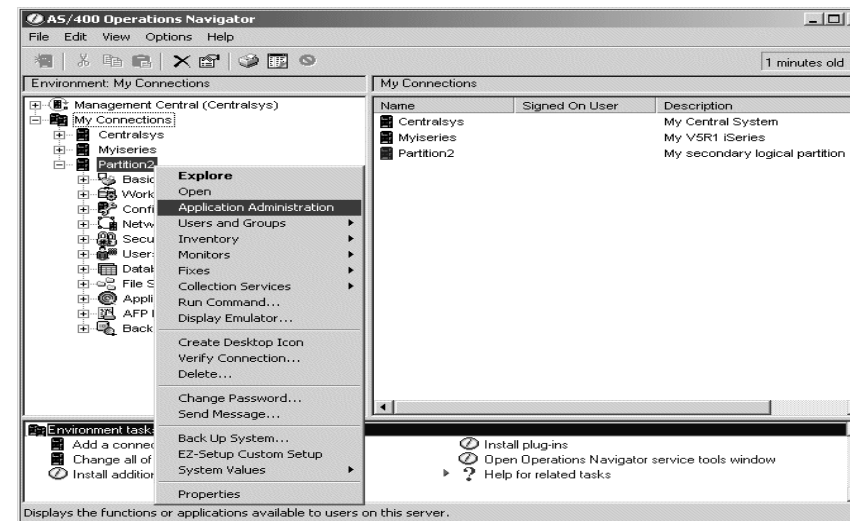
Manage access to functions on a "per i5/OS user" basis

- iSeries Navigator
- iSeries Access for Windows functions
- Other client and host applications
- Ability to even restrict users with All Object privilege

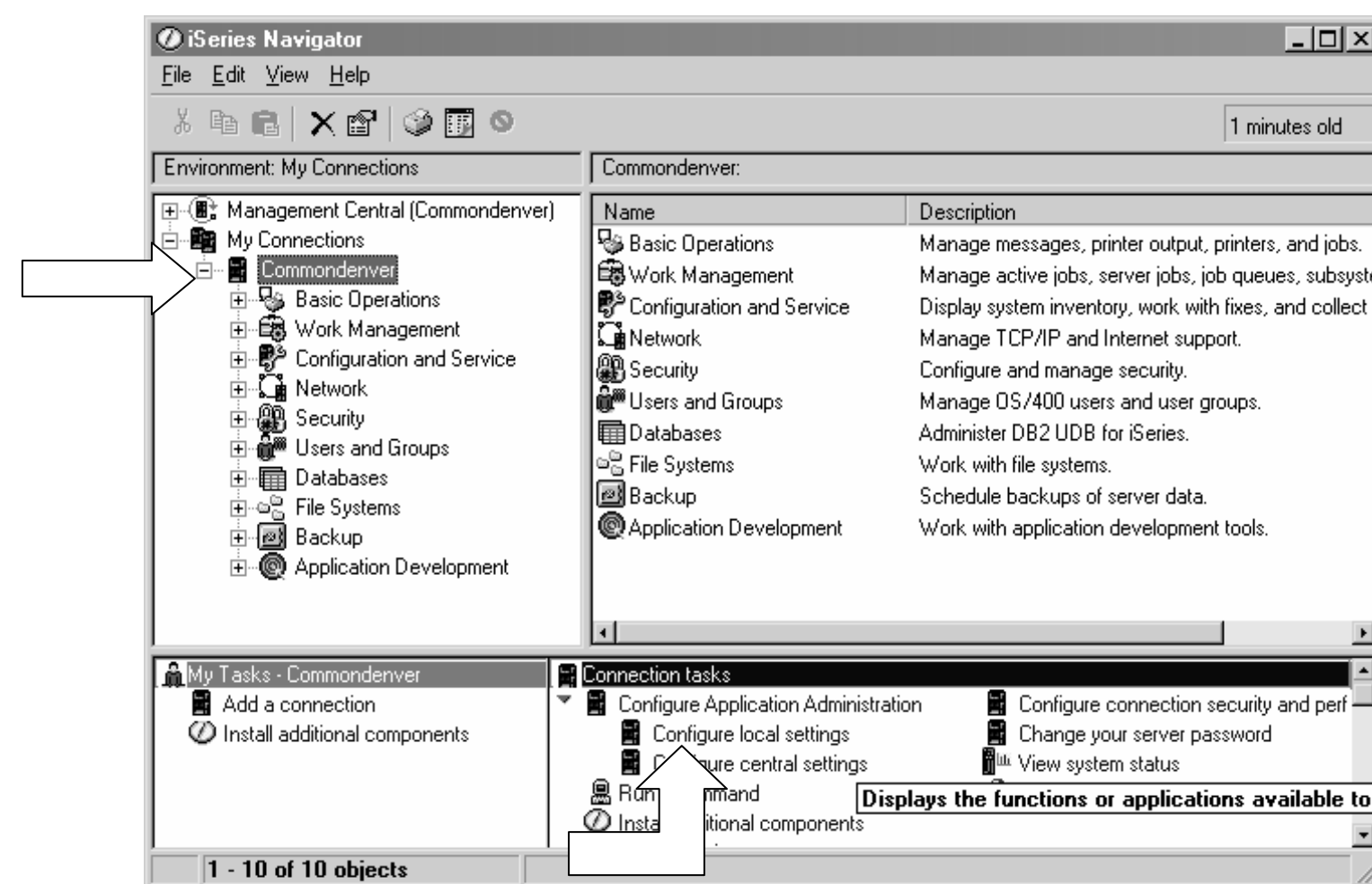
Easy to use interface

\*SECADM authority required on iSeries to manage Application Administration settings

- \*ALLOBJ required for some Advanced Settings



## Application Administration



Can access from Task Bar also

IBM System i IBM

## Application Administration - By User or Group

**Individual users and groups can be given more or less access capabilities**

1. Use user or group properties
2. Click on 'Capabilities' button
3. Open 'Applications' tab

**Cminer Properties**

User name:

Description:

Password:

Previous sign-on: 03/07/06 09:32:05  
Sign-on attempts not valid: 0

User must change password at next sign-on

Enable user for processing

Groups
Personal
Capabilities
Jobs
Networks

OK
Cancel
Help

93 *i want an i.* © 2007 IBM Corporation

IBM System i IBM

## Application Administration - by system

- Host Applications
- iSeries Navigator

**Application Administration - myseries**

Select the functions or applications available to users.

iSeries Navigator | Client Applications | Host Applications

Function	Default Access	All Object Access	Customized Access
AS/400 TCP/IP UTILITIES	<input checked="" type="checkbox"/>	<input type="checkbox"/>	
BACKUP RECOVERY AND MEDIA SERVICES F...	<input checked="" type="checkbox"/>	<input type="checkbox"/>	
DIGITAL CERTIFICATE MANAGER (DCM)	<input type="checkbox"/>	<input checked="" type="checkbox"/>	x
*SYSTEM CERTIFICATE STORE	<input type="checkbox"/>	<input checked="" type="checkbox"/>	
OBJECT SIGNING APPLICATIONS	<input type="checkbox"/>	<input checked="" type="checkbox"/>	
<b>OPERATING SYSTEM/400</b>	<input type="checkbox"/>	<input checked="" type="checkbox"/>	
ALL OBJECT	<input type="checkbox"/>	<input checked="" type="checkbox"/>	
ACCESS JOB LOG OF *ALLOBJ JOB	<input type="checkbox"/>	<input checked="" type="checkbox"/>	
SERVICE	<input type="checkbox"/>	<input checked="" type="checkbox"/>	
CLUSTER MANAGEMENT	<input type="checkbox"/>	<input checked="" type="checkbox"/>	
DISK UNITS	<input type="checkbox"/>	<input checked="" type="checkbox"/>	
QIBM_QYLP_SERVICE_LPARGMGT	<input type="checkbox"/>	<input type="checkbox"/>	
SERVICE TRACE	<input type="checkbox"/>	<input type="checkbox"/>	
QIBM_EJB_PRODUCT	<input type="checkbox"/>	<input type="checkbox"/>	
QIBM_EJB_GROUP_OF_FUNCS	<input type="checkbox"/>	<input type="checkbox"/>	

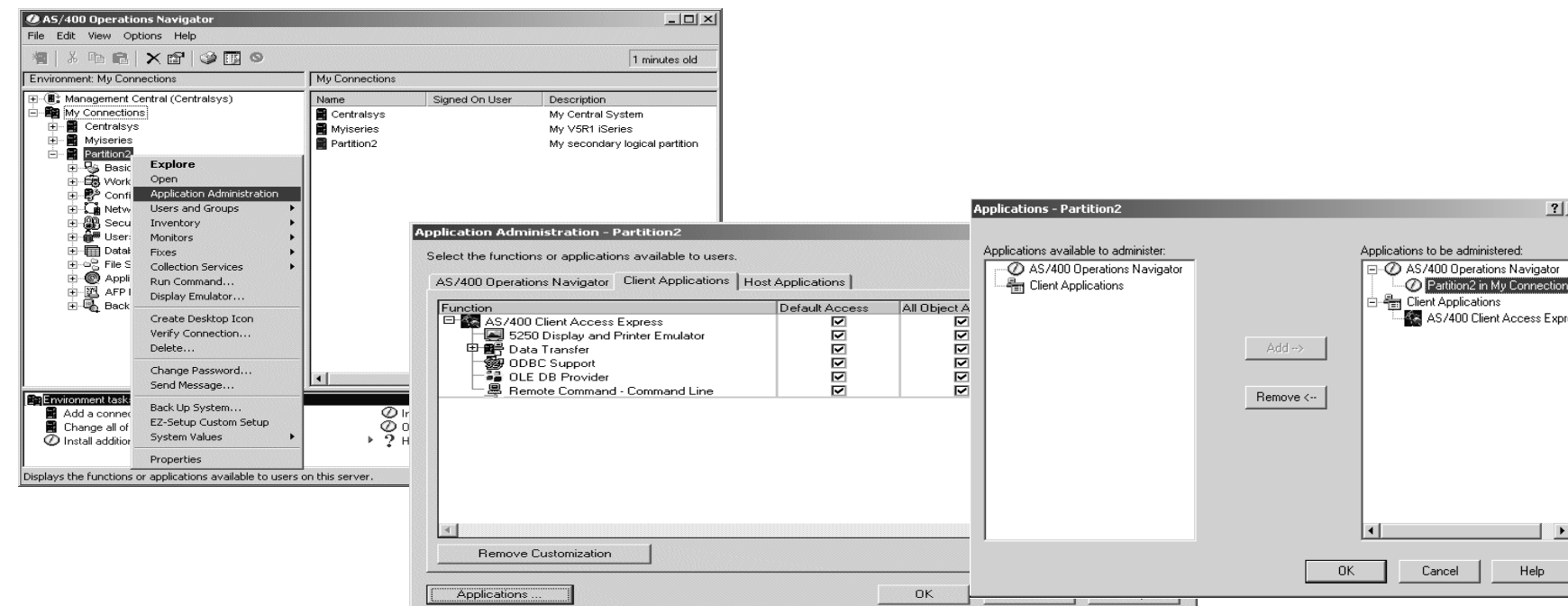
Disk management is not available by default

94 *i want an i.* © 2007 IBM Corporation

## Notes: Registering Applications

### Add and remove applications to be administered through Application Administration

- No changes can be made to the "shipped value" for access settings until the application has been registered to Application Administration
- If an application is shown in both lists on this dialog, it indicates the application has been registered on the iSeries, but there are some administrator functions for this application that are defined on this client, but are not registered on the iSeries. You can select the application and press "Add" to register the additional functions.



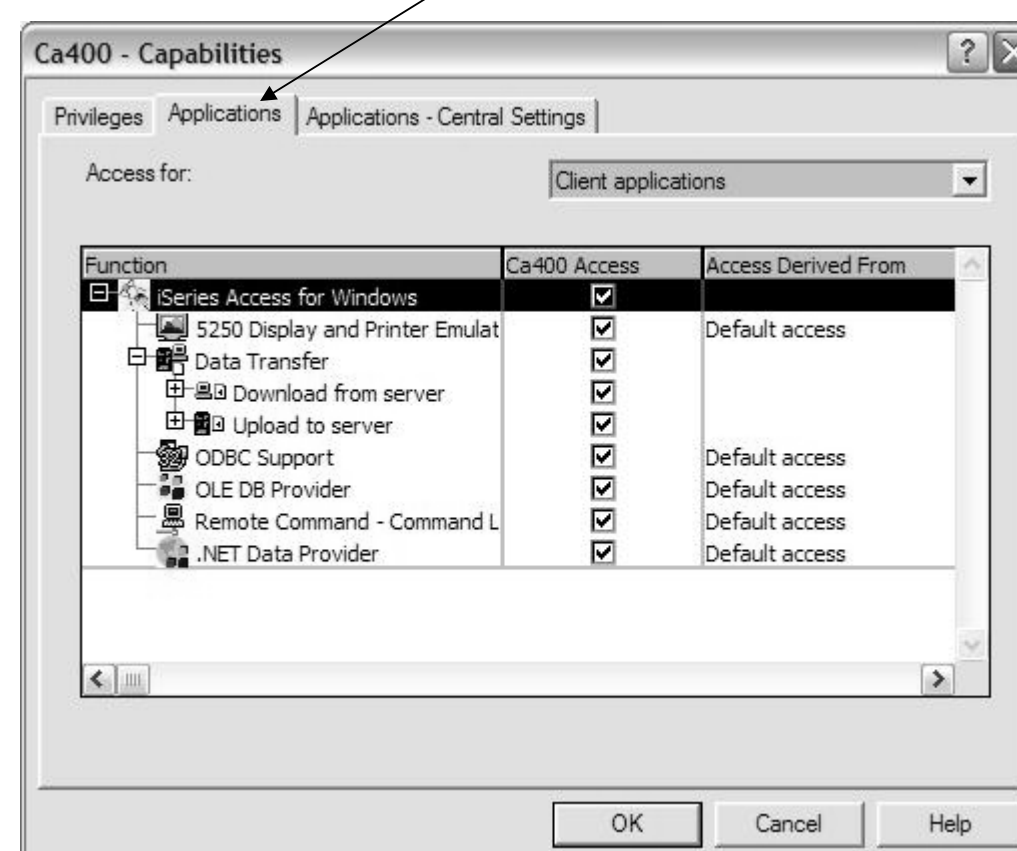
## Application Administration – iSeries Access

All Application Administration information is stored on System i, and roams with users when they use iSeries Access for Windows on a different PC

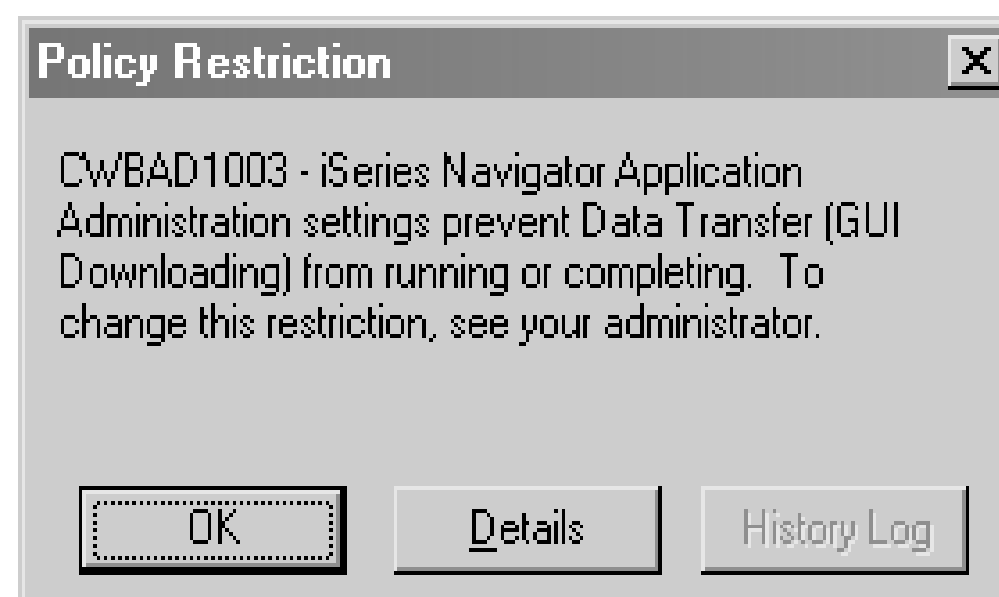
Can control use of the following iSeries Access for Windows functions:

- PC5250
- Data Transfer
- ODBC
- OLE DB
- Remote Program Calls
- .NET

iSeries Access for Windows



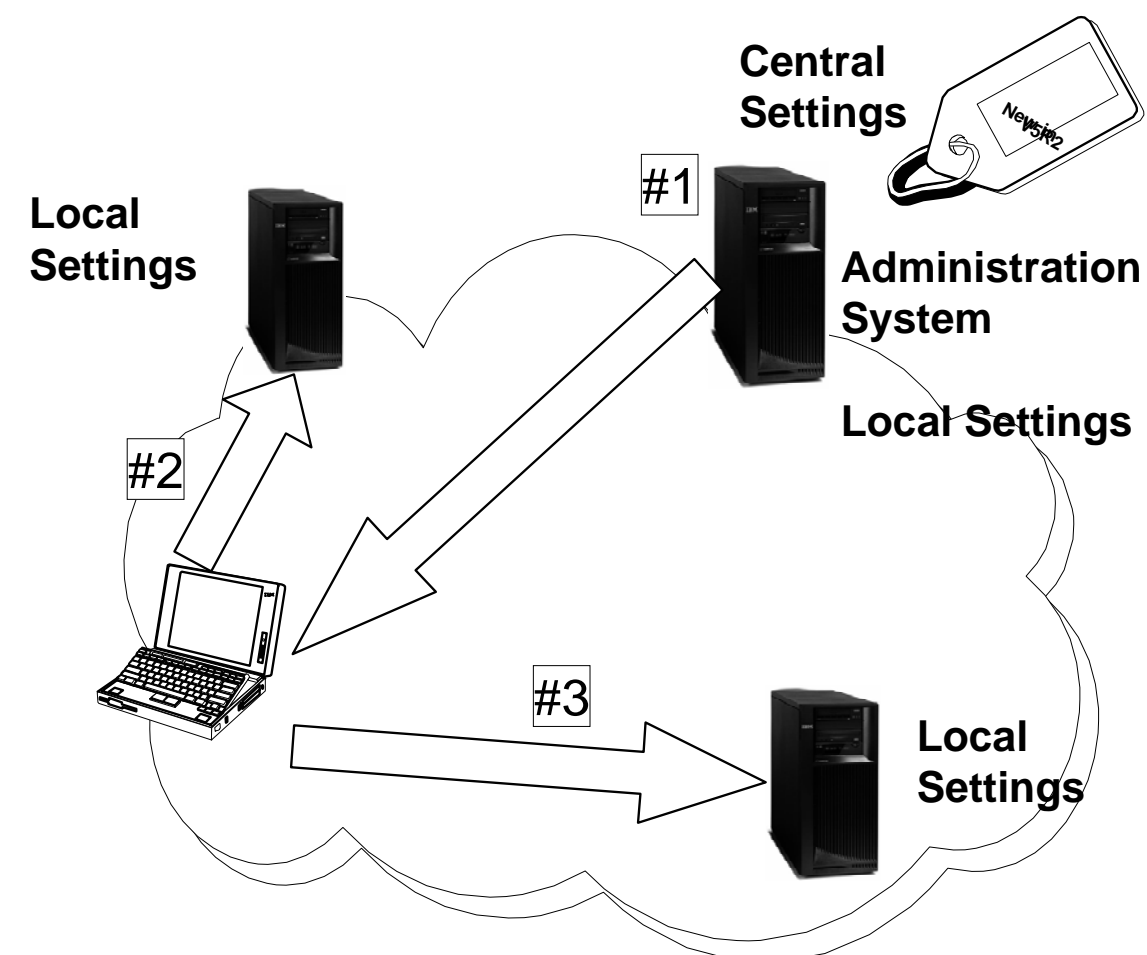
### Type of error message end user might receive



### Application Administration for iSeries Access for Windows

**Central Settings  
New in V5R2**

Applies to iSeries  
Access for  
Windows  
functions only

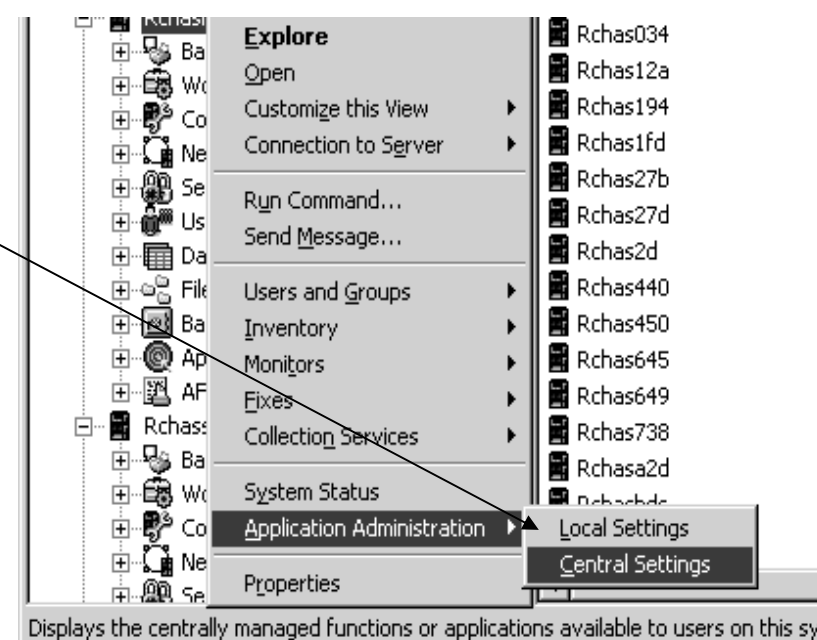




## Application Administration - Local Settings

### Local Settings

- Can reside on any System i
- Were the only type of administrative settings supported by Application Administration prior to V5R2.
- They are now called Local Settings because:
  - Each i5/OS maintains its own set of Application Administration settings.
  - When an iSeries Access for Windows client accesses multiple System i's, it will use whatever Local Settings were defined on each system it connects to...

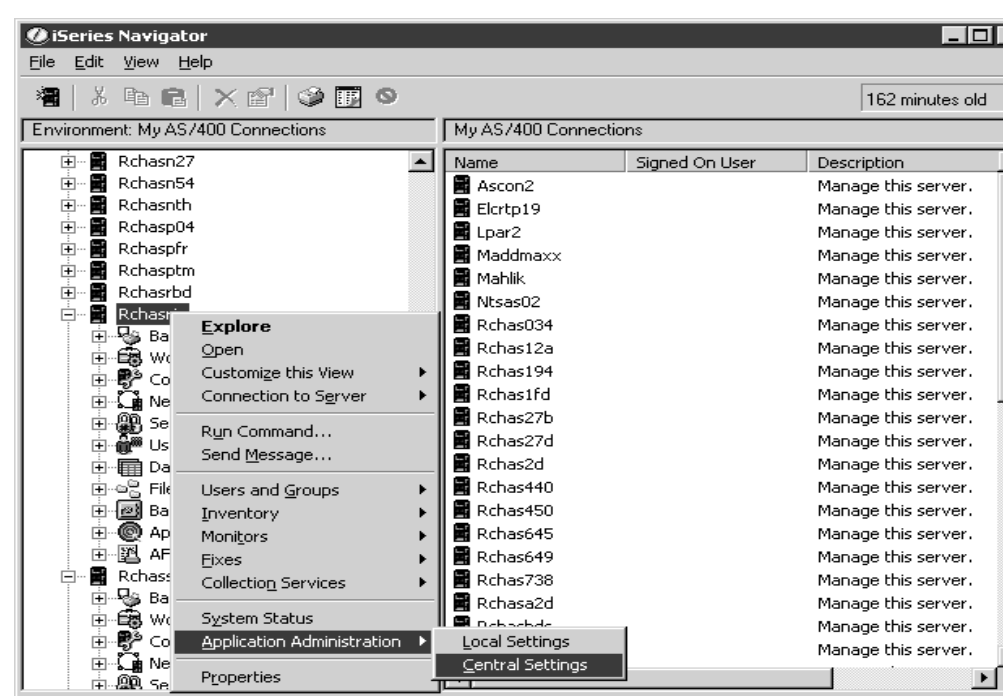


Displays the centrally managed functions or applications available to users on this system.

## Application Administration - Central Settings

### Central Settings:

- Affect iSeries Access for Windows properties that apply to all System i's the client may access.



### Central settings:

- Can only be used on i5/OS and iSeries Access for Windows V5R2 or later
- One System i must be configured as an "Administration System".
- iSeries Access for Windows clients will retrieve central settings from the "Administration System"



IBM System i IBM

## Example – Central Settings

→

**Will apply to all systems a user connects to in this network**

**This could be set for:**

- All Users
- Group of Users
- Individual Users

Application Administration (Central Settings) - Commondenver

Select the functions or applications available to users.

Function	Default Access	All Object Access	Customized Access
iSeries Access for Windows	<input checked="" type="checkbox"/>	<input checked="" type="checkbox"/>	
5250 Display and Printer Emulator	<input checked="" type="checkbox"/>	<input checked="" type="checkbox"/>	
Display Session Configuration	<input checked="" type="checkbox"/>	<input checked="" type="checkbox"/>	
Printer Session Configuration	<input checked="" type="checkbox"/>	<input checked="" type="checkbox"/>	
PC5250 Emulator	<input checked="" type="checkbox"/>	<input checked="" type="checkbox"/>	
Data Transfer	<input checked="" type="checkbox"/>	<input checked="" type="checkbox"/>	
Download from server	<input checked="" type="checkbox"/>	<input checked="" type="checkbox"/>	
GUI Downloads	<input checked="" type="checkbox"/>	<input type="checkbox"/>	X
Use of RTOPCB	<input checked="" type="checkbox"/>	<input checked="" type="checkbox"/>	
Autostart Downloads	<input checked="" type="checkbox"/>	<input checked="" type="checkbox"/>	
Excel Add-in Downloads	<input checked="" type="checkbox"/>	<input checked="" type="checkbox"/>	
ActiveX Automation Downloads	<input checked="" type="checkbox"/>	<input checked="" type="checkbox"/>	
Upload to server	<input checked="" type="checkbox"/>	<input checked="" type="checkbox"/>	
ODBC Support	<input checked="" type="checkbox"/>	<input checked="" type="checkbox"/>	
OLE DB Provider	<input checked="" type="checkbox"/>	<input checked="" type="checkbox"/>	

Remove Customization      Customize

Applications ...    Advanced Settings ...    OK    Cancel    Help

101    *i want an i.*    © 2007 IBM Corporation

IBM System i IBM

## Central Settings - Advanced

**Central Settings support Advanced Settings**

**This allows an administrator to customize many of the properties used by iSeries Access for Windows, such as:**

- Defining a set of environments to be used by the clients
- Customize many of the connection, service, language, and password used by the clients

Application Administration (Central Settings) - Rchsrjs

Select the functions or applications available to users.

Function	Default Access	All Object Access	Customized Access
iSeries Access for Windows	<input checked="" type="checkbox"/>	<input checked="" type="checkbox"/>	
5250 Display and Printer Emulator	<input checked="" type="checkbox"/>	<input checked="" type="checkbox"/>	
Display Session Configuration	<input checked="" type="checkbox"/>	<input checked="" type="checkbox"/>	
Printer Session Configuration	<input checked="" type="checkbox"/>	<input checked="" type="checkbox"/>	
PC5250 Emulator	<input checked="" type="checkbox"/>	<input checked="" type="checkbox"/>	
Data Transfer	<input checked="" type="checkbox"/>	<input checked="" type="checkbox"/>	
Download from server	<input checked="" type="checkbox"/>	<input checked="" type="checkbox"/>	
GUI Downloads	<input type="checkbox"/>	<input checked="" type="checkbox"/>	
Use of RTOPCB	<input type="checkbox"/>	<input checked="" type="checkbox"/>	
Autostart Downloads	<input type="checkbox"/>	<input checked="" type="checkbox"/>	
Excel Add-in Downloads	<input type="checkbox"/>	<input checked="" type="checkbox"/>	
ActiveX Automation Downloads	<input type="checkbox"/>	<input checked="" type="checkbox"/>	
Upload to server	<input type="checkbox"/>	<input checked="" type="checkbox"/>	
Host File Creation	<input type="checkbox"/>	<input type="checkbox"/>	X
File Creation Based on Existing Se	<input type="checkbox"/>	<input type="checkbox"/>	

Remove Customization      Customize

Applications ...    Advanced Settings ...    OK    Cancel    Help

102    *i want an i.*    © 2007 IBM Corporation

IBM System i IBM

## Example of an Advanced Setting

**Connections:**

- Signon information
- Performance

**Passwords**

**PC5250**

**Service**

**Environments**

**Plug-ins**

**Language**

103
*i want an i.*
© 2007 IBM Corporation

IBM System i IBM

## Example of an Advanced Settings

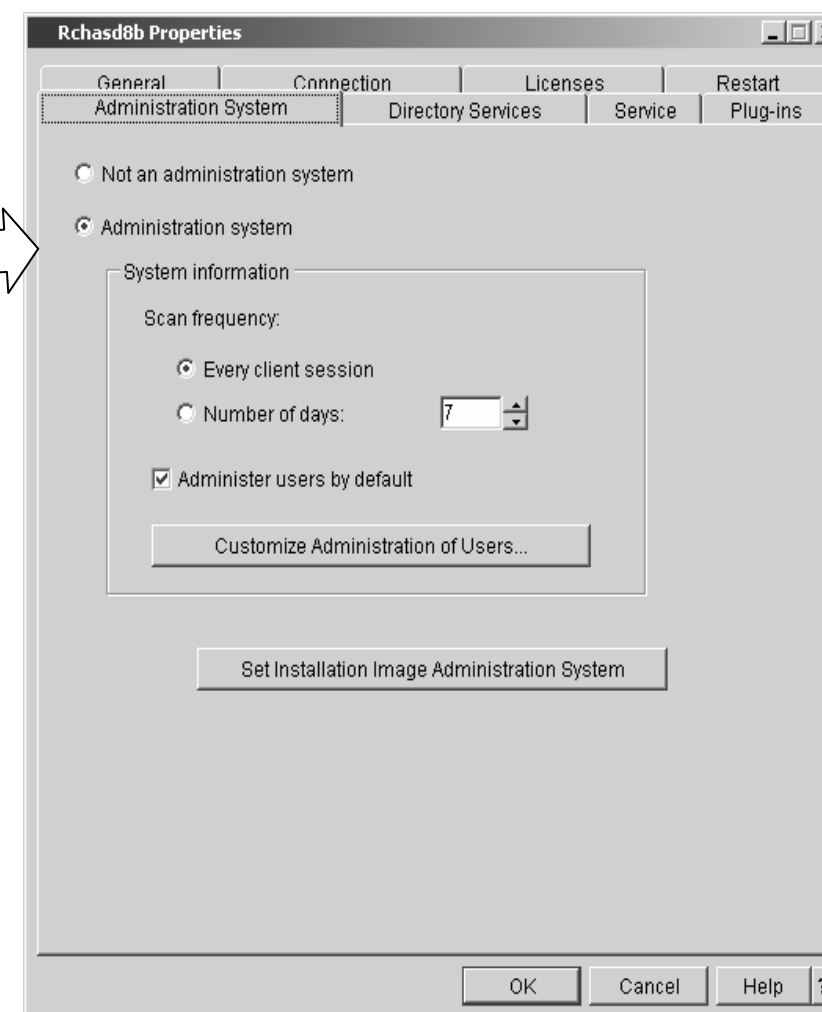
**Prohibit users from defining additional environments**

104
*i want an i.*
© 2007 IBM Corporation

## Identify a “Central” System

In order to use a “Central System, you must set up a system in the network to be the “Administration system”

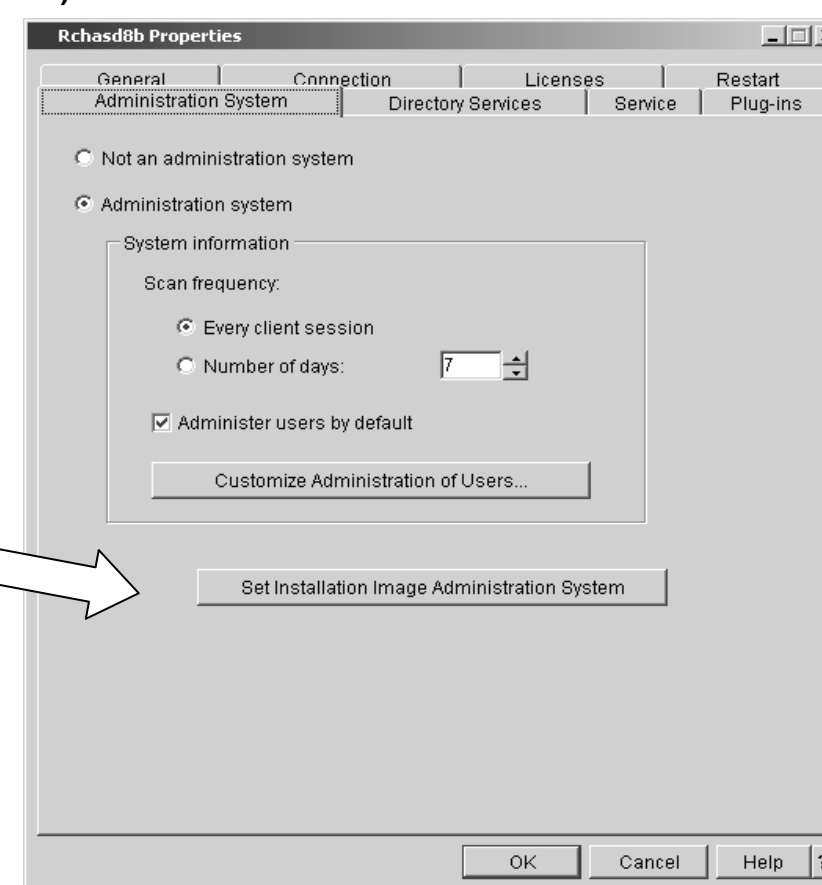
1. Start iSeries Navigator and point to system you want to be the Administration System
2. Right click on the system name and select “Properties”
3. Click the Administration System Tab
4. Check “Administration System” button to set the system as your Administration System



## Identify a “Central” System (continued)

The key of the Central Settings concept is to make it transparent to end users.

- You should also set up this system in your iSeries Access for Windows install image.
- Select the “Set Installation Image Administration System” button to do this.
- Then any PC user installing iSeries Access for Windows from this system will automatically be set up with this system being their “Central System”



This also saves administration costs as this is the only system in your network where you would need to install iSeries Access for Windows.

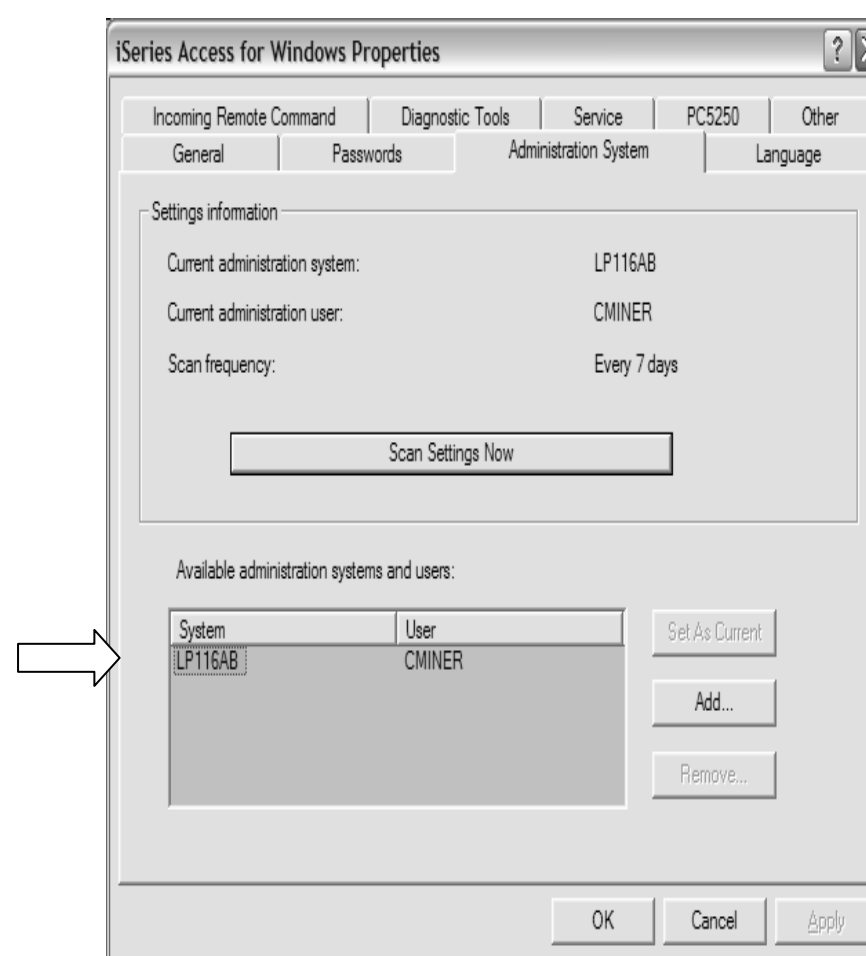
- Additionally, in the future, you would only need to apply Service Packs and new releases to this system.



## Set up PCs to know which system is “Central” System

### For PCs with code already installed

- Go to each PC and open up the iSeries Access for Windows “Properties” panel.
- Go to “Administration System” tab, and set the system name for the user.



## Trademarks and Disclaimers

© IBM Corporation 1994-2007. All rights reserved.

References in this document to IBM products or services do not imply that IBM intends to make them available in every country.

Trademarks of International Business Machines Corporation in the United States, other countries, or both can be found on the World Wide Web at <http://www.ibm.com/legal/copytrade.shtml>.

Intel, Intel logo, Intel Inside, Intel Inside logo, Intel Centrino, Intel Centrino logo, Celeron, Intel Xeon, Intel SpeedStep, Itanium, and Pentium are trademarks or registered trademarks of Intel Corporation or its subsidiaries in the United States and other countries.  
Linux is a registered trademark of Linus Torvalds in the United States, other countries, or both.  
Microsoft, Windows, Windows NT, and the Windows logo are trademarks of Microsoft Corporation in the United States, other countries, or both.  
IT Infrastructure Library is a registered trademark of the Central Computer and Telecommunications Agency which is now part of the Office of Government Commerce.  
ITIL is a registered trademark, and a registered community trademark of the Office of Government Commerce, and is registered in the U.S. Patent and Trademark Office.  
UNIX is a registered trademark of The Open Group in the United States and other countries.  
Java and all Java-based trademarks are trademarks of Sun Microsystems, Inc. in the United States, other countries, or both.  
Other company, product, or service names may be trademarks or service marks of others.

Information is provided "AS IS" without warranty of any kind.

The customer examples described are presented as illustrations of how those customers have used IBM products and the results they may have achieved. Actual environmental costs and performance characteristics may vary by customer.

Information concerning non-IBM products was obtained from a supplier of these products, published announcement material, or other publicly available sources and does not constitute an endorsement of such products by IBM. Sources for non-IBM list prices and performance numbers are taken from publicly available information, including vendor announcements and vendor worldwide homepages. IBM has not tested these products and cannot confirm the accuracy of performance, capability, or any other claims related to non-IBM products. Questions on the capability of non-IBM products should be addressed to the supplier of those products.

All statements regarding IBM future direction and intent are subject to change or withdrawal without notice, and represent goals and objectives only.

Some information addresses anticipated future capabilities. Such information is not intended as a definitive statement of a commitment to specific levels of performance, function or delivery schedules with respect to any future products. Such commitments are only made in IBM product announcements. The information is presented here to communicate IBM's current investment and development activities as a good faith effort to help with our customers' future planning.

Performance is based on measurements and projections using standard IBM benchmarks in a controlled environment. The actual throughput or performance that any user will experience will vary depending upon considerations such as the amount of multiprogramming in the user's job stream, the I/O configuration, the storage configuration, and the workload processed. Therefore, no assurance can be given that an individual user will achieve throughput or performance improvements equivalent to the ratios stated here.

Prices are suggested U.S. list prices and are subject to change without notice. Starting price may not include a hard drive, operating system or other features. Contact your IBM representative or Business Partner for the most current pricing in your geography.

Photographs shown may be engineering prototypes. Changes may be incorporated in production models.