



Session: 420016 Agenda key: 52MN

## iSeries Access for Web Control Access to your iSeries Resources

Warren Acker

IBM Rochester – iSeries Access for Web Development  
warrena@us.ibm.com

© Copyright IBM Corporation, 2005. All Rights Reserved.  
This publication may refer to products that are not currently  
available in your country. IBM makes no commitment to make  
available any products referred to herein.

why "i"? it's simple.



## Agenda

- iSeries Access for Web Overview
- Methods and Strategies for Customization
- Administrator Examples for Database, 5250, and File
- User Preferences
- Homepage and Template Customization
- Email Configuration
- New for V5R3 and Beta
- Summary
- Questions

## iSeries Access for Web Overview

iSeries Access for Web is software that runs on the iSeries server. It provides access to various iSeries functions through a browser and provides a user-centric, web-based view of iSeries or AS/400 applications and information. No software required to be installed on the client, other than a web browser.

iSeries Access for Web functions include:

- *Printers* - printer output viewing, printers, shared printers, and output queues
- *Messages* - user messages, message queues, send messages
- *Jobs* - work with jobs and server jobs
- *5250* user interface
- *Database* - run SQL statements, work with tables, upload data, manage frequently run requests, extract server object information
- *Files* - work with files in the iSeries integrated file system or within NetServer file shares, upload files to the integrated file system or a NetServer share.
- *Command* - run iSeries commands from the browser.
- *Download* - manage file/software distribution
- *Customize* - configure settings and restrict usage of the functions of the product.

## iSeries Access for Web Overview

To get more information on iSeries Access for Web request a copy of or attend

**Session 41LC-42LC: OPEN LAB:iSeries Access for Web**

or

Visit the iSeries Access for Web Home Page

**<http://www.ibm.com/servers/eserver/iseries/access/web>**

## iSeries Access for Web – Sessions in Orlando

1. 25MN - iSeries Access for Web: The Browser Alternative!
2. 25MN - Tips and Techniques for iSeries Access for Web
3. 31MN – iSeries Access for Web: Real World Usage **(NEW!)**
4. 32MN - iSeries Access for Web: Run 5250 in a Browser
5. 33MN - iSeries Access for Web: Setup and Configuration
6. 35LC - LAB: iSeries Access for Web: Installation and Configuration
7. 36LC - LAB: iSeries Access for Web: Installation and Configuration 
8. 41LC - OPEN LAB: iSeries Access for Web
9. 42LC - OPEN LAB: iSeries Access for Web
10. 45MN - iSeries Access for Web: Database Access
11. 46MN – Programming with iSeries Access for Web
12. 52MN - iSeries Access for Web: Control Access to your iSeries Resources
13. 53MN - iSeries Access for Web Runs in a Portal
14. 54MF - iSeries Access for Web: Printing Made Easy Through Your Browser

 Voted "Best Traditional Lab" at Spring 2005 COMMON

## Controlling access for iSeries Access for Web

- Controlling how users access the iSeries server using iSeries Access for Web can be done using 3 methods
  - Administration policies
    - Administrators can use the Customize function to set policies for users and groups of users.
  - User Preferences
    - Users can set their own Preferences for things like
      - What tabs are available in the navigation bar
      - How to view output (default rows/columns per page)
      - How to filter output
  - Replace default Home page
    - Administrators can use the Customize function to replace the default iSeries Access for Web home page with their own home page.

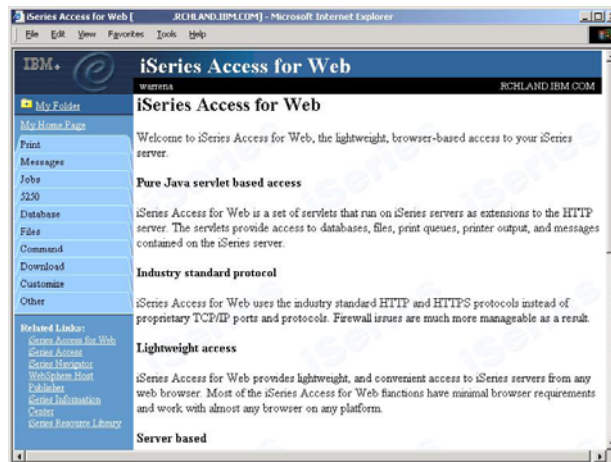
## Controlling access for iSeries Access for Web

- Home page



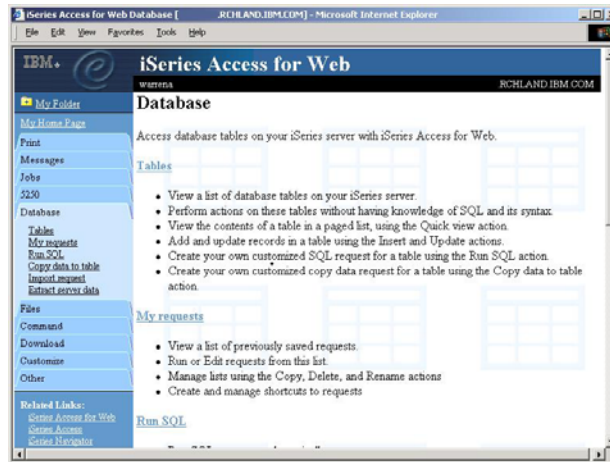
## Controlling access for iSeries Access for Web

- Main page



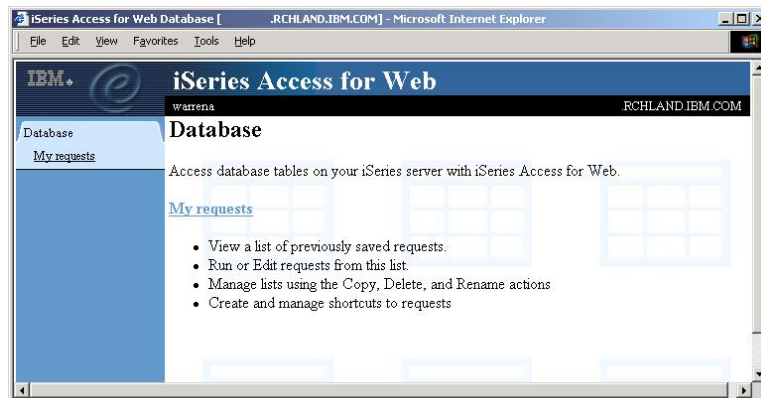
## Controlling access for iSeries Access for Web

- Product functionality



## Controlling access for iSeries Access for Web

- Sample for a user that only performs preset queries



## ***Controlling Access: Setting policies for users and groups of users***

## **Controlling Access - How & Who?**

- The Customize function allows administrators to set policies for users and groups of users.
- These policies control...
  - Functions a user can perform.
  - How certain information is presented to the user.
- When a function is restricted...
  - Its navigation bar content is removed.
  - Access to the servlet is restricted.
  - It takes effect immediately.
- Administrators with \*SECADM special authority are automatically authorized to administer settings for users and groups of users to which they have authority.
- These administrators can then grant other user profiles permission to administrate iSeries Access for Web functions.

## Controlling Access - Strategies

- iSeries Access for Web ships with a set of default policy settings.
- These default policy settings allow most functions to be available for all users.
- As an administrator, you may not want users to access all functions.
- A quick strategy to restrict a function from all users
  - Set up an administrator to have access to all functions
  - Use the Customize Group Profiles function and customize the \*PUBLIC group profile.
  - Every user is a member of this group.
  - You could "Deny" a function for all users to restrict access.
    - Important Note
      - Doing this would also restrict the administrator if you hadn't specifically authorized them first.
    - You could then "Allow" specific users access to some functions that were restricted.
- Only users that have been allowed access will be able to use that function.

## Notes: Controlling Access - Strategies

- iSeries Access for Web ships with a set of default policy settings. The default policy settings allow most of the iSeries Access for Web functions to be available for all users. Without any customization, users accessing iSeries Access for Web could begin using most of the available functions.
- As an administrator of this product, you may not want your users to be able to access all of these functions. It is the responsibility of an administrator to restrict functions they do not want their users to be able to access.
- One of the quickest strategies that can be deployed to restrict a function from all users is to use the Customize Group Profiles function and customize the \*PUBLIC group profile.
- This group profile is defined such that every user is a member of this group. So, for example, if you were to customize the \*PUBLIC profile and set the "Browse files" and "File shares" file functions to "Deny", you would restrict file system access from this product for all users.
- If some of your users required access to this function, you could specifically customize their user profiles and set this function back to "Allow". In this way, only users that have been specifically allowed access will be able to use that function, all others would not have access.
- It should be noted that the \*PUBLIC group profile includes the administrator user ID that is used to customize other group and user profiles. If you were to deny functions for \*PUBLIC, this would affect the administrator user profile. As you customize iSeries Access for Web for \*PUBLIC, you may want to consider specifically allowing your administrator user profile to have access so that it is not locked out of iSeries Access for Web function.

## Controlling Access - Setting policies

Administrator actions on user & group profiles

Action	Description
Edit	This action is always available. Use this option to create or modify policy settings for the specified user or group profile.
Copy	This action is only available when the user or group profile currently has specific policy settings. It allows you to copy all of the policy settings from this profile to one or more other profiles.
Reset	This action is only available when the user or group profile currently has policy settings. It allows you to remove all of the policy settings specific to this profile.

Administrator actions on each policy setting

Action	Description
Use current setting	This is the default action that is pre-selected. If the setting is not modified, no action is performed. If the setting is modified, it will be added to the user or group profile record in the iSeries Access for Web policies file.
Apply setting to profile	Select this action to add the current setting to the user or group profile record in the iSeries Access for Web policies file. The setting will be written to the user or group profile record, even if it was not modified. You would use this action to ensure the user or group profile gets this setting. This is because a different policy setting may be used based on the user profile being a member of one or more iSeries group profiles.
Reset to default	Select this action to remove the setting from the user or group profile record in the iSeries Access for Web policies file. This option is only available if the user or group profile record currently contains a specific setting for this policy.

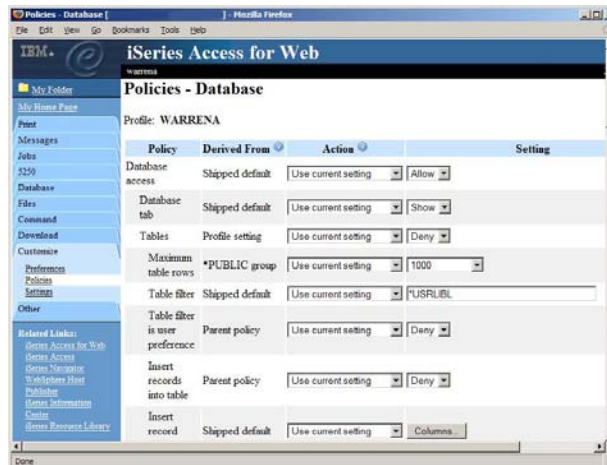
## Controlling Access - Setting policies (continued)

- The "Derived From" column (displayed when editing policy and preference settings) indicates where the policy setting that will be used for this user profile was found.

Action	Description
Profile setting	Indicates the setting is currently specific to the profile being customized. The setting had previously been applied to this profile.
Group - (groupName)	Indicates the setting is not specific to the profile being customized, but is being derived from the specified iSeries group profile and the user is a member of this group.
*PUBLIC setting	Indicates the setting is not specific to the profile being customized. No setting was found in any iSeries group profile memberships. The setting is being derived from the *PUBLIC group settings. This is a special group profile available to iSeries Access for Web administrators. All user profiles are automatically members of this special group profile. Administrators can modify this group profile to easily apply settings to all iSeries Access for Web users.
Shipped default	Indicates the setting is not specific to the profile being customized, no setting was found in any iSeries group profile memberships, or the special *PUBLIC group profile. The setting is being derived from a shipped default value.
Parent policy	Indicates the function is a sub-function of a higher level category, and its policy setting is being controlled by a top level policy setting. For example, Tables is a sub-function of Database. If Database is restricted, Tables will be restricted as well and would show its being controlled by a parent policy.



## Controlling Access - Setting policies (continued)

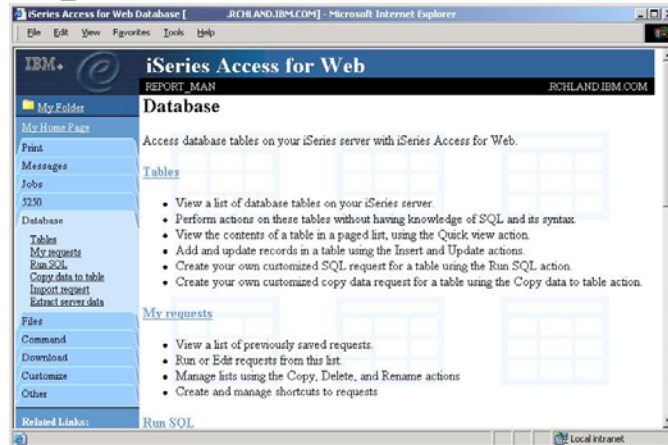


## Example: Simple Database User

- The following screen shots step through setting the policies so a specific user only has the ability to run preconfigured database queries to generate reports.
- This example shows
  - the "Before" picture of what DB functions a user can perform with no customization of iSeries Access for Web
  - the specific database policies to set to restrict our user named REPORT\_MAN
  - what general policies need to be set to restrict use of non-DB related functions by REPORT\_MAN
  - The "After" picture of what REPORT\_MAN can do
- When the policy is set, it takes effect immediately.

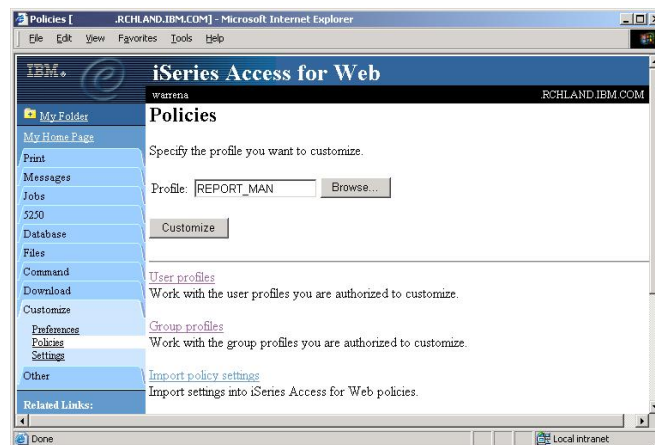
## Example: Simple Database User - Before

- Accessing the Database folder of iSeries Access for Web as user REPORT\_MAN



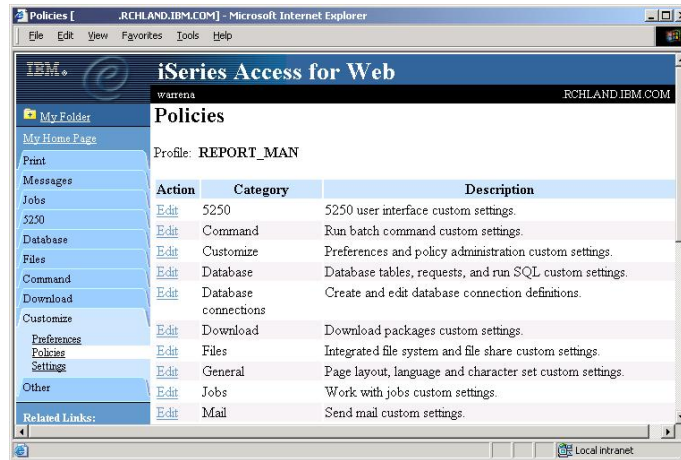
## Example: Simple Database User - Policies

- Policies - the starting point for customization of a specific user or group.
- This is a new browser session, where we signed on as an administrator.



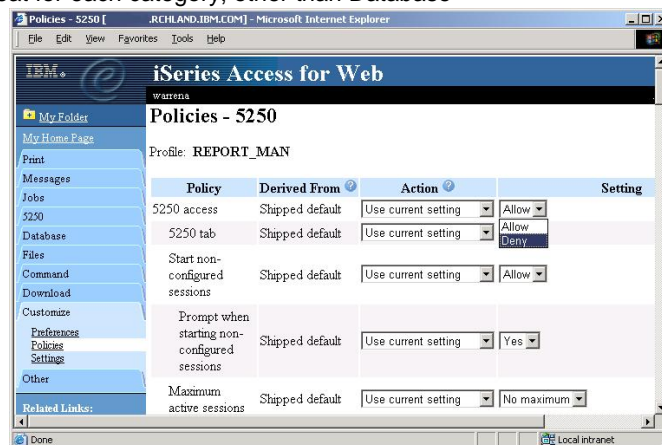
## Example: Simple Database User - Categories

- Determine which categories need to be restricted/modified.



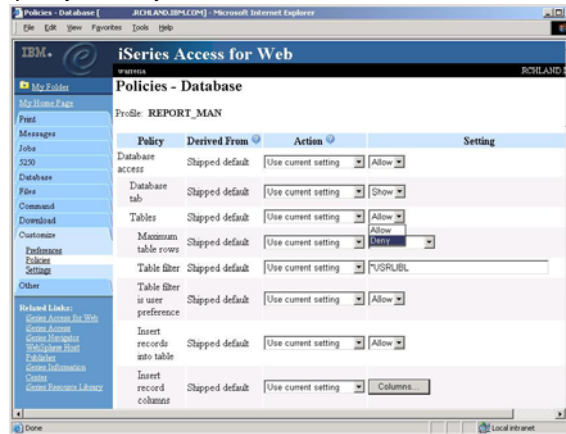
## Example: Simple Database User – Other

- Turn off the other non-Database functions. Set top level to Deny.
- Repeat for each category, other than Database



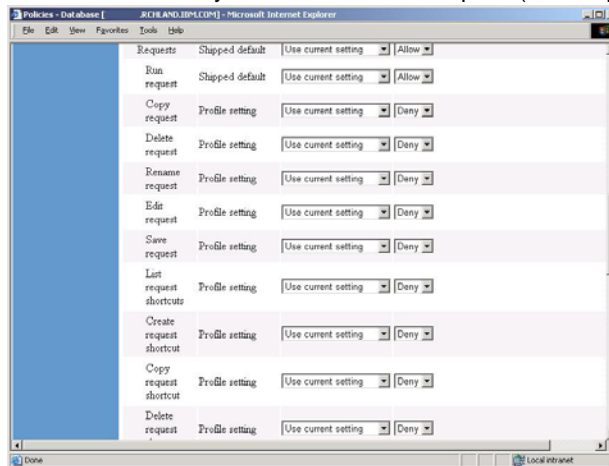
## Example: Simple Database User

- Allow access to Database function.
- Set Tables policy to Deny.



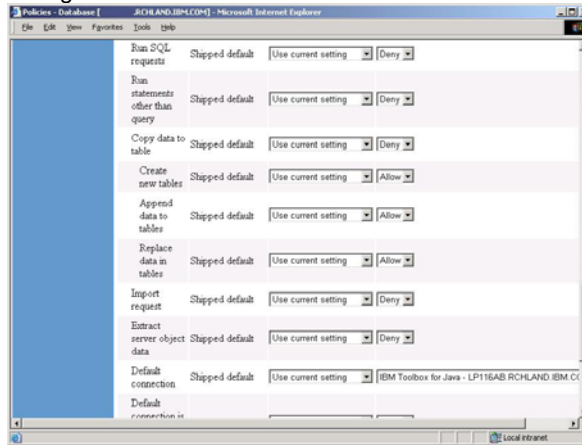
## Example: Simple Database User

- Only allow the user the ability to run a saved DB request (Run request)



## Example: Simple Database User

- Turn off the ability to perform the remaining database functions
- Save the changes



## Example: Simple Database User - Completion

- The user can now only run the DB queries they have been given.

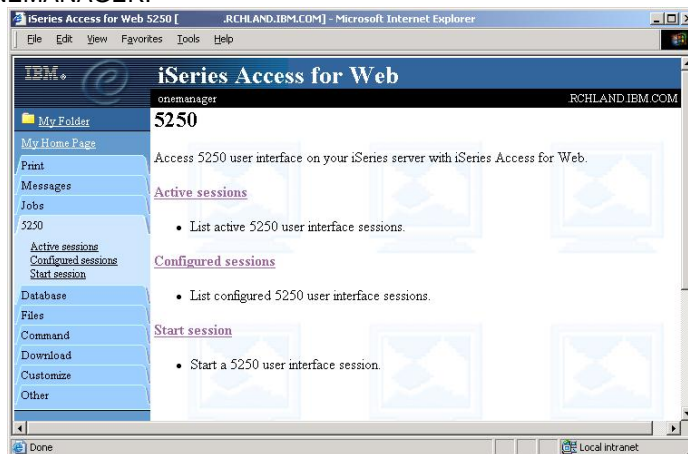


## Example: 5250 Access

- The following screen shots step through setting up the items necessary to allow a group of users to use a single pre-configured 5250 session.
- In this example, ONEMANAGER is one of the user profiles in the MANAGERS group.
- This example shows
  - Creating a 5250 session and 5250 session shortcut to be used by the management team
  - Making the 5250 session shortcut the session used by the MANAGERS group profile.
  - Restricting access to other functions in iSeries Access for Web.
- When the policy is set, it takes effect immediately.

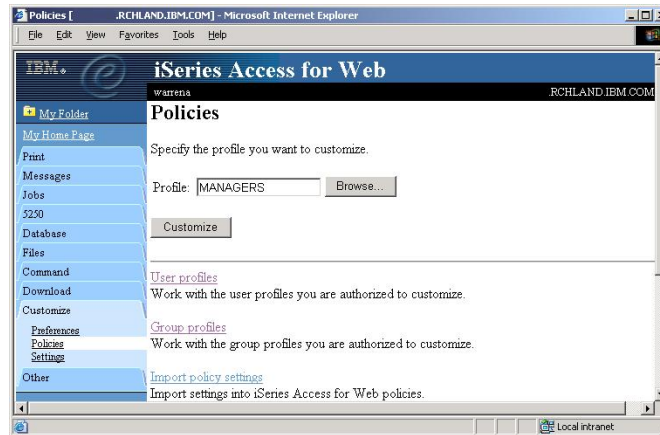
## Example: 5250 Access - Before

- Access the 5250 folder iSeries Access for Web Main page as user ONEMANAGER.



## Example: 5250 Access - Policies

- Policies - the starting point for customization of a specific user or group.
- This is a new browser session, where we signed on as an administrator.



## Example: 5250 Access - Categories

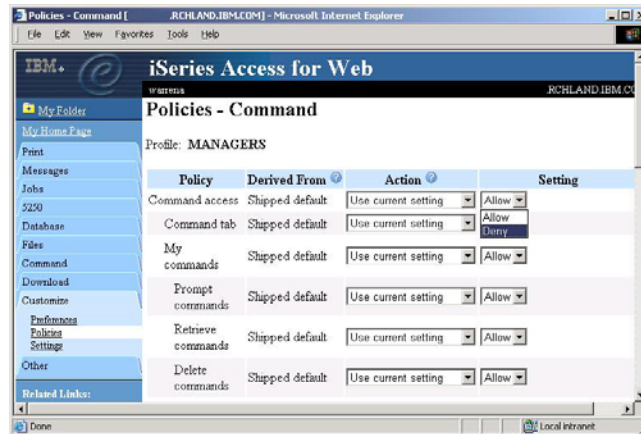
- Determine which categories need to be restricted/modified.





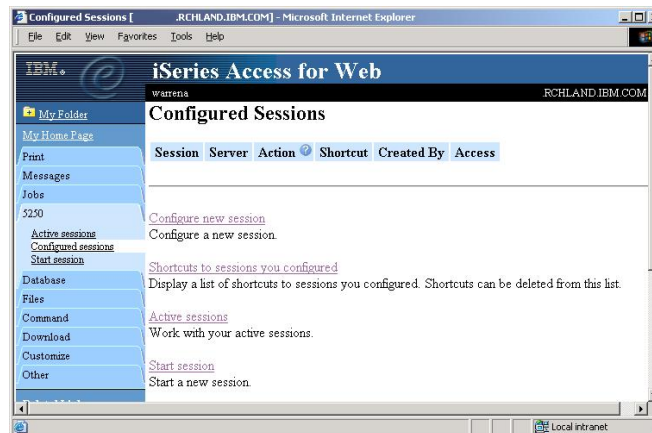
## Example: 5250 Access – Other

- Turn off the other non-5250 functions. Set top level to Deny.
- Repeat for each category that should be restricted for the MANAGERS group.



## Example: 5250 Access – Functional Setup

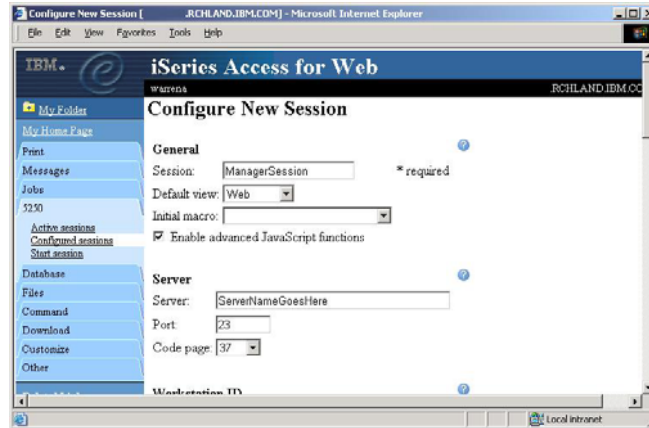
- The administrator goes to the Configured Session link on the 5250 tab. Select the "Configure new session" link.





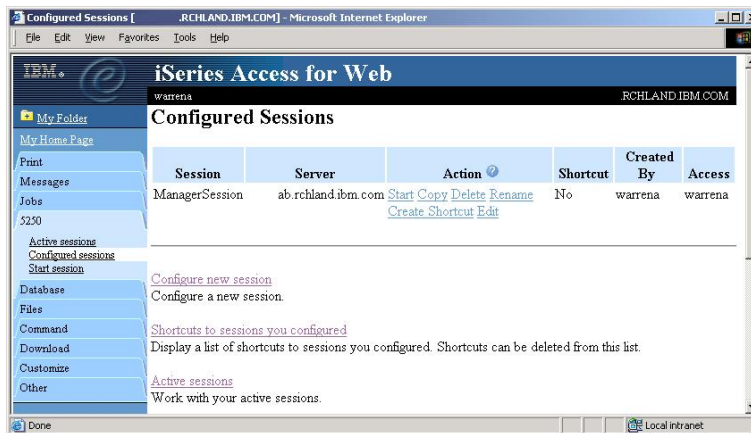
## Example: 5250 Access – Functional Setup

- The administrator configures the 5250 session settings to be used the managers.
- Settings include the server to connect to, color schemes, and many other options.



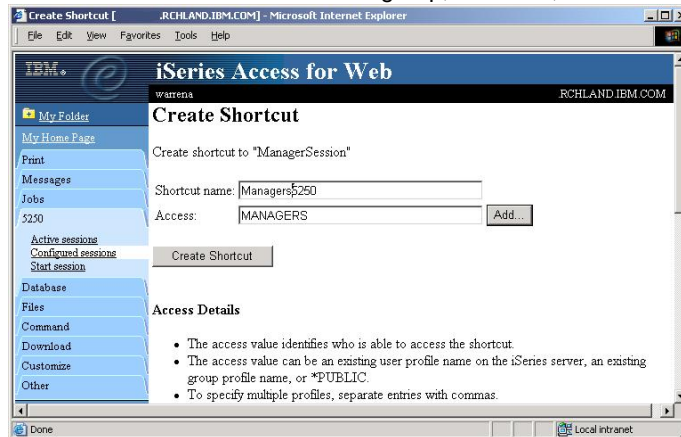
## Example: 5250 Access – Functional Setup

- The saved session is only available to the administrator that is currently signed on.
- The session must be shared to the managers. Use the "Create Shortcut" link.



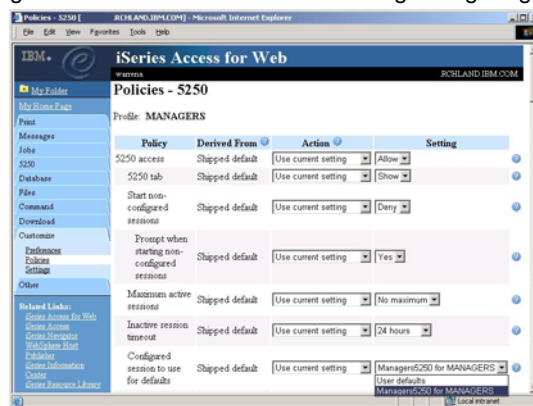
## Example: 5250 Access – Functional Setup

- Name the shortcut whatever you wish.
- Session can be shared with MANAGERS group, \*PUBLIC, or individual profiles.



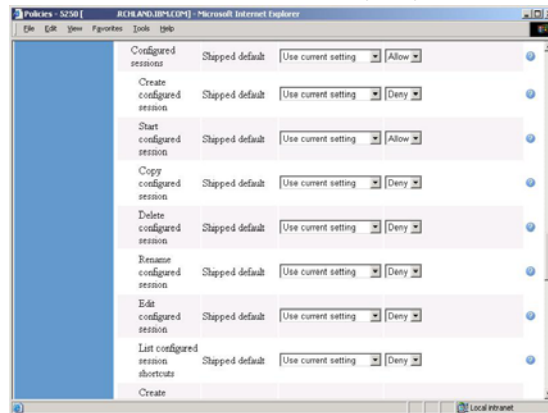
## Example: 5250 Access – Back to Customize

- Go back to 5250 in Customize – Policies for the MANAGERS group profile.
- Select the shortcut to use as the default session settings for the MANAGERS.
- Select settings to lock MANAGERS out of starting/configuring new sessions.



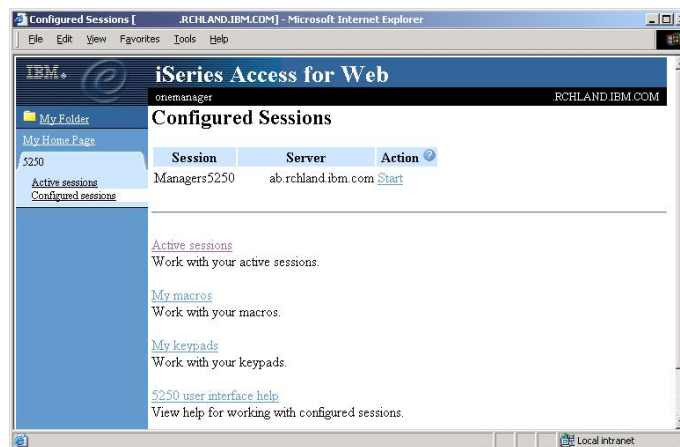
## Example: 5250 Access – More 5250 Settings

- Set all 5250 policies to Deny, except Configured Sessions and Start Configured Sessions.
- You may also want to allow them to access My Keypads and My Macros.



## Example: 5250 Access – After

- The managers can now only start a pre-configured 5250 session, or reconnect to an active session.

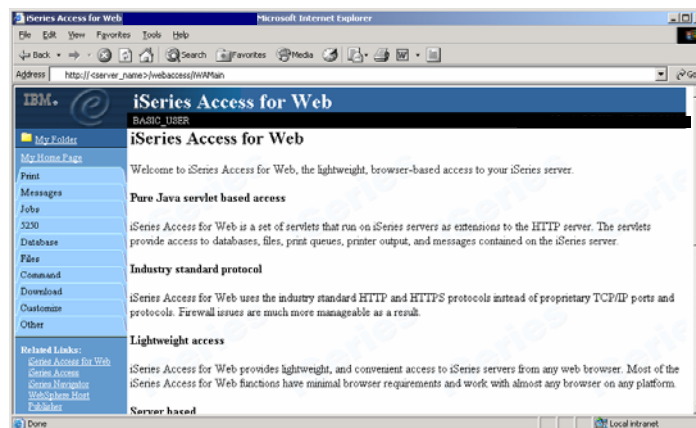


## Example: IFS access

- The following screen shots step through setting a policy to filter the list of Integrated File System (IFS) directories for a group profile (group of users).
- This example shows
  - the default list of IFS directories that can be browsed by user BASIC\_USER which is part of the IWAGROUP group profile.
  - what policy an administrator can modify to limit all users in the IWAGROUP group profile to a specific IFS directory.
  - the list of IFS directories that can be browsed by user BASIC\_USER after setting the policy for the IWAGROUP group profile.
- When the policy is set, it takes effect immediately.

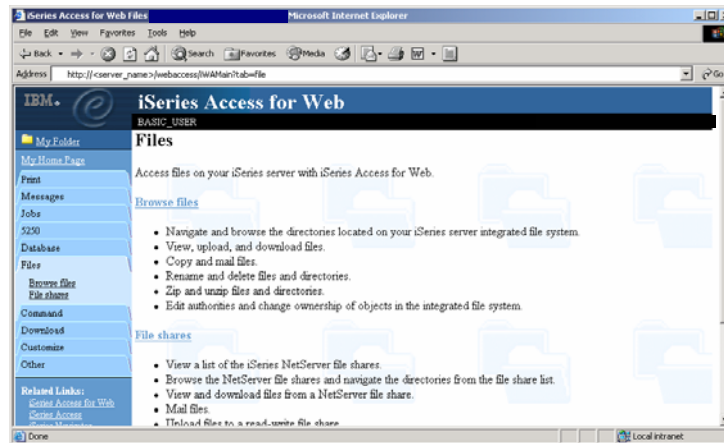
## Example: IFS access (continued)

- Access the iSeries Access for Web Main page as user BASIC\_USER.



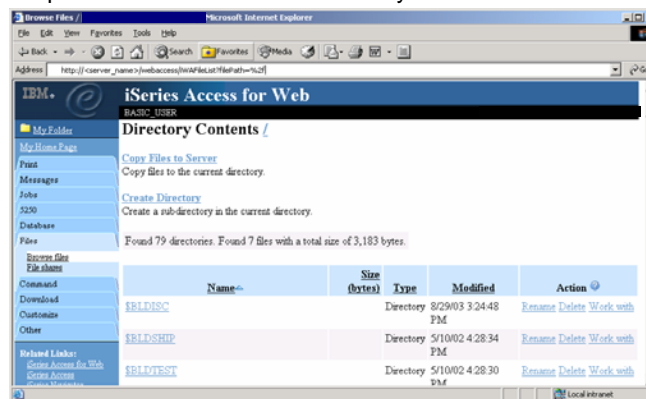
## Example: IFS access (continued)

- The Files tab allows the user to browse the IFS.



## Example: IFS access (continued)

- Clicking Browse files displays directories and files on the left, actions on the right.
- The default path starts at the root of the file system.



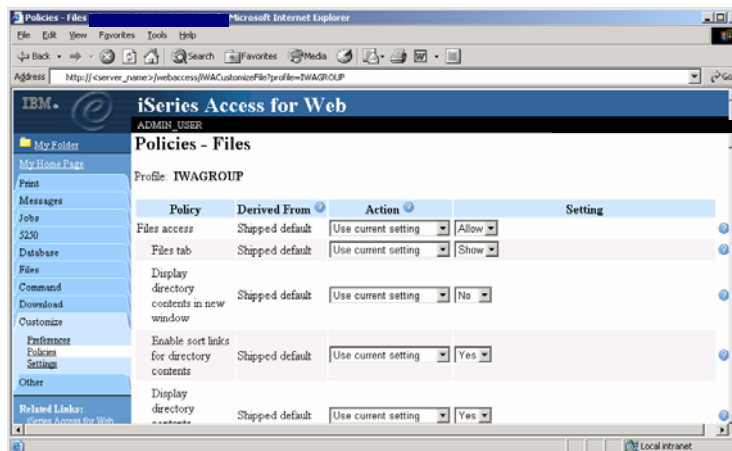
## Example: IFS access (continued)

- Open another browser, sign on to iSeries Access for Web as user ADMIN\_USER.
- Click on the Customize tab, Policies, to work with the IWAGROUP group profile.



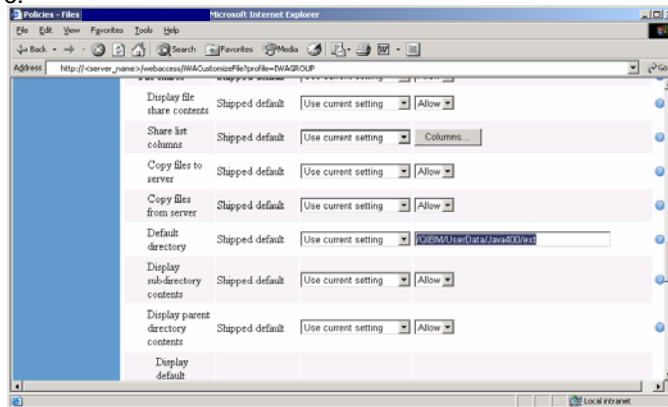
## Example: IFS access (continued)

- Click the Edit action for the IWAGROUP profile, click the Files category.



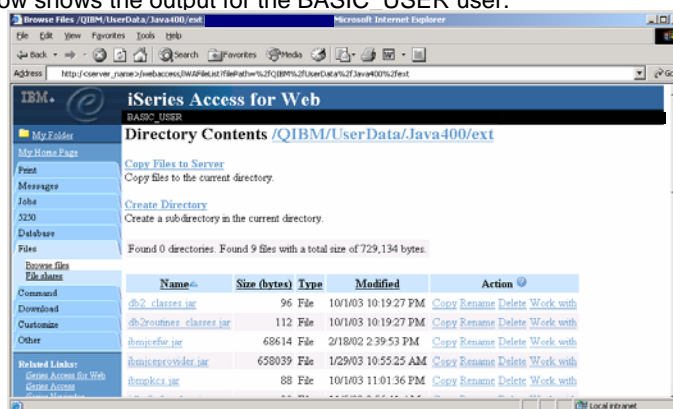
## Example: IFS access (continued)

- Scroll down the page.
- Modify the Default directory policy to be /QIBM/UserData/Java400/ext, click Save.



## Example: IFS access (continued)

- Browse files is now limited to the specific directory for all users that are part of the IWAGROUP group profile.
- Below shows the output for the BASIC\_USER user.



## Example: IFS access (continued)

- **Tips**

- The "Default directory" policy setting specifies the integrated file system directory to display by default when no other directory path is provided to the Browse files function.
- Valid values:
  - A fully qualified iSeries integrated file system path.
  - Default value is "/".
- To allow only downloads from the current directory, set the following options to "Deny":
  - File actions (includes operations such as copy, delete, rename, mail, zip)
  - Display subdirectory contents
  - Display parent directory contents
  - Copy files to server

***User Preferences:  
Users can set their own Preferences***



## User Preferences

- The Preferences function allows users to customize iSeries Access for Web settings to meet their needs.
- By default, all users are allowed to modify their preferences.
- Preferences are a subset of the complete list of available policy settings.
- Users can set the following types of preferences
  - Column inclusion and ordering for functions that display output in columns.
  - Number of rows per page to display on output.
  - Show or hide navigation bar tabs.
  - Preferred language and character set.
  - Database table filters and default database connection.
  - Number of commands to save in the run command history.

## User Preferences (continued)

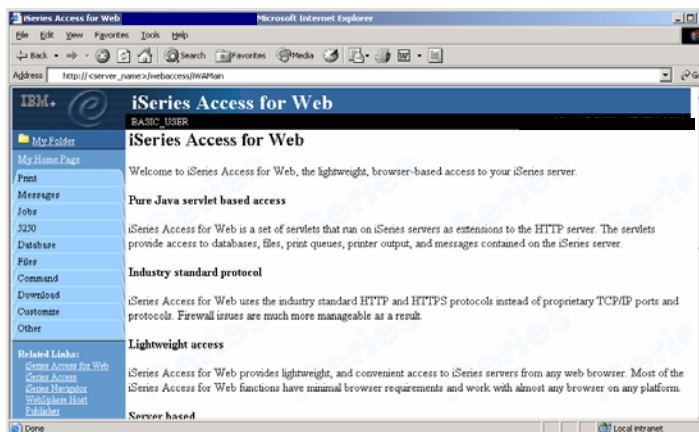
- Restricting access to Preferences
  - Administrators can deny specific users or groups from accessing their preferences.
  - This is controlled by the "Edit preferences" policy.
  - This policy is useful in organizations where administrators want to set up all customization options for users and ensure users are not able to modify any preference settings.

## Example: User Preferences, Printer output

- The following screen shots step through setting a user preference for Printer output.
- This example shows
  - the default printer output page for user BASIC\_USER.
  - what settings the user can modify to change the printer output page output.
  - the printer output page after user BASIC\_USER modifies the preferences.
- When the policy is set, it takes effect immediately.

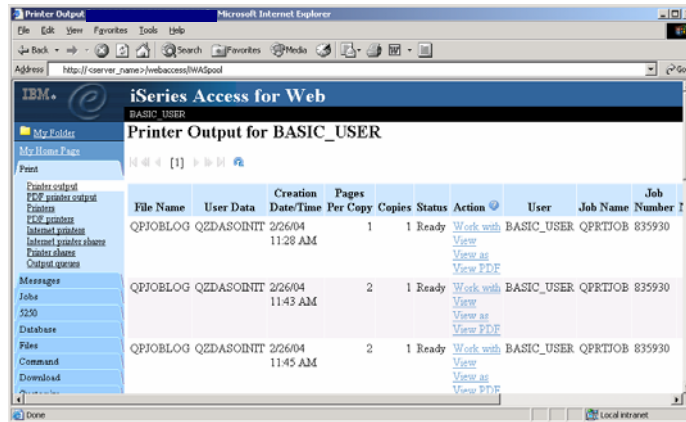
## Example: User Preferences, Printer output (continued)

- Access the iSeries Access for Web Main page as user BASIC\_USER.



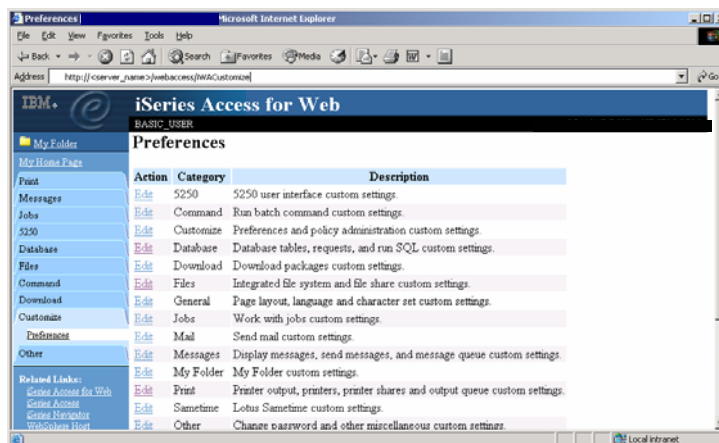
## Example: User Preferences, Printer output (continued)

- The printer output display defaults with many columns of information.



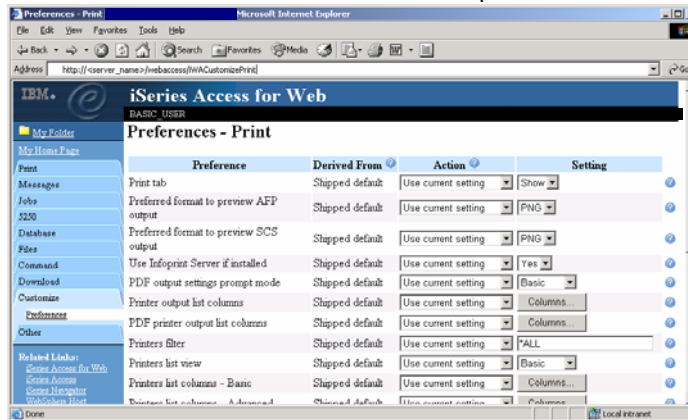
## Example: User Preferences, Printer output (continued)

- Click on the Customize tab to work with Preferences.



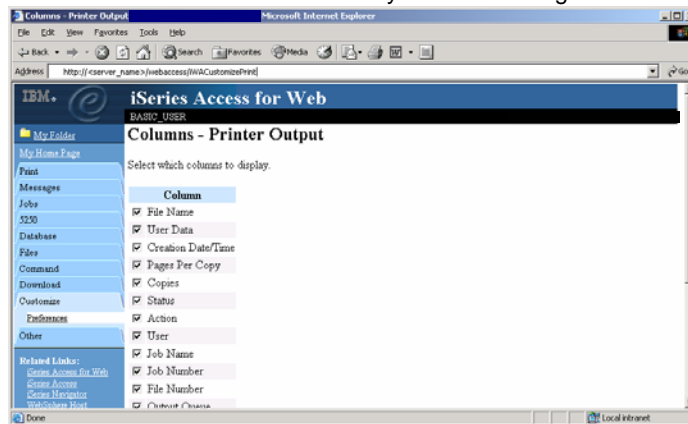
## Example: User Preferences, Printer output (continued)

- Click on the Print category.
- Click on the Columns button for the "Printer output list columns" Preference.



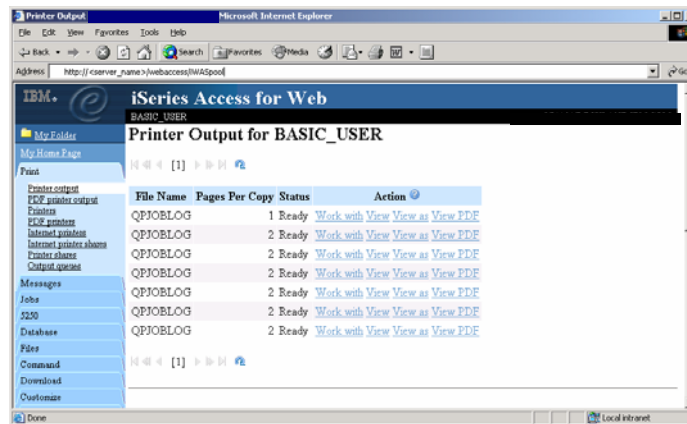
## Example: User Preferences, Printer output (continued)

- The Columns displayed can be toggled off/on by checking the box.
- Click OK and Save buttons to immediately save the changes.



## Example: User Preferences, Printer output (continued)

- The printer output display now only has a few columns.



## Example: User Preferences, Printer output (continued)

- Tips
  - This example walks through the user modifying the printer output they see. An administrator can:
    - Restrict the user's access to the Preferences interface.
    - Perform the same changes by setting policies for the user, or a group of users.
  - The Preferences interface that the user has access to is only a subset of all the policy settings an administrator can access for the same function.

## Home Page Customization

## Home Page Customization

- A default home page is displayed when iWAHome URL is invoked.
  - It's a starting point to highlight functions.
  - It's an example of how to build your own home page or pages that access iSeries Access for Web functionality.
    - V5R1 /QIBM/ProdData/Access/Web/html/homepage.html
    - V5R2-V5R3 /QIBM/ProdData/Access/Web2/html/homepage.html
- The Customize function allows you to replace the default home page.
- Default home page replacement can be done for all users (\*PUBLIC), or can be changed for only certain users and/or groups of users.
- Great article - example
  - "Build a quick and easy Web site with iSeries Access for Web" - Janet Weber
  - [http://www.ibm.com/servers/eserver/series/access/pdf/build\\_website\\_article.pdf](http://www.ibm.com/servers/eserver/series/access/pdf/build_website_article.pdf)
  - iSeries 400 Experts Journal

## Home Page Customization (continued)

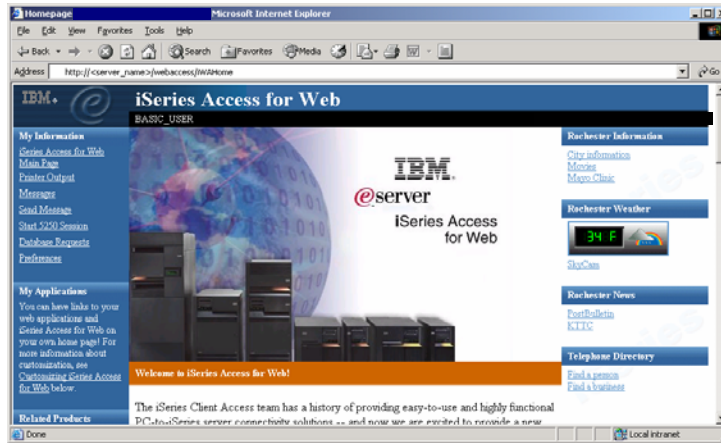
- To change the default home page...
  - Make a copy of...
    - V5R1 /QIBM/ProdData/Access/Web/html/homepage.html
    - V5R2-V5R3 /QIBM/ProdData/Access/Web2/html/homepage.html
  - Modify your copy of homepage.html.
  - Update the policy setting to point to your homepage.html.
  - Verify authorities to your copy of homepage.html and the path to it so it can be accessed.
- The home page HTML file can also contain special tags
  - %%include list=file%% Points to a file containing home page links
  - %%TITLE%% Replaced with title of the page
  - %%USER%% Replaced with authenticated user name
  - %%SYSTEM%% Replaced with name of iSeries
  - %%VERSION%% Replaced with version of iSeries Access for Web
  - %%include section=file%% Replaced with HTML fragment
  - See the default homepage.html file for examples of using these special tags.
  - See iSeries Access for Web Info Center documentation on using "My Home Page" for additional detail
- For detailed information on changing the default home page
  - iSeries Access for Web Info Center - Use iSeries Access for Web functions --> My Home Page
  - <http://www.redbooks.ibm.com/redbooks/pdfs/sg246804.pdf>
  - <http://www.redbooks.ibm.com/redbooks/SG246804.html>
  - iSeries Access for Web Open Lab has an exercise on customizing the home page.

## Template file customization

- iSeries Access for Web has a default look for its functional pages.
  - This look is controlled by a template file.
  - /QIBM/ProdData/Access/Web/html/webaccess.html
- The template file has sections to specify
  - Header/footer areas of functional pages.
  - Where iSeries Access for Web content is placed in the page.
- Special HTML tags
  - webaccess.html supports the same special tags as homepage.html
  - %%CONTENT%% - Replaced with the functional content of the page.
- The Customize function allows you to replace the default template file.
- Default template file replacement can be done for all users (\*PUBLIC), or can be changed only for certain users and/or groups of users.

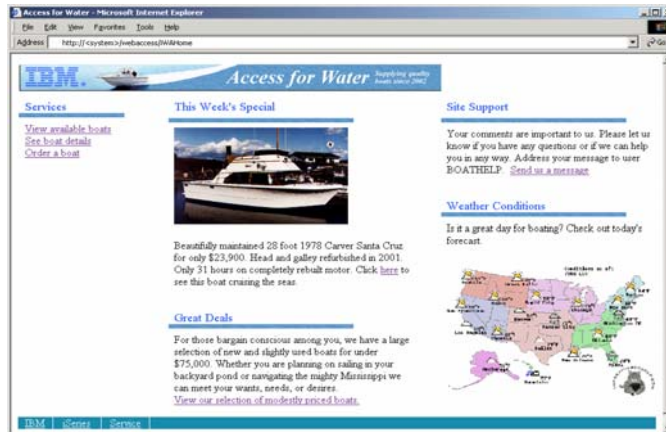
## Home Page/Template Customization Example

- Default Home Page



## Home Page/Template Customization Example (continued)

- Custom Home Page

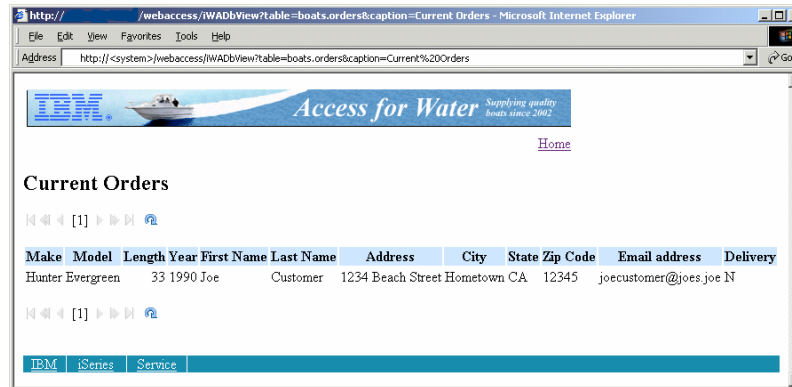






## Home Page/Template Customization Example (continued)

- Custom template



## Home Page/Template Customization Example (continued)

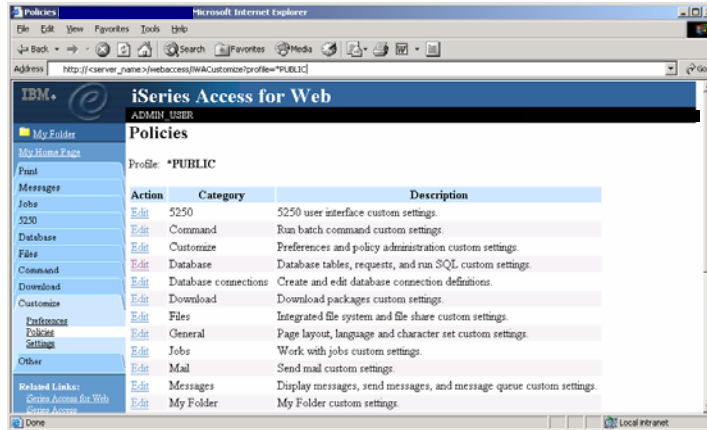
```

<html>
<body>
<table>
<tr>
<td><img SRC="boathead.gif" height=43 width=614></td>
<tr>
<td align="right"><a href="/webaccess/iWAHome">Home</a></td>
</tr>
</table>
<br>
%%CONTENT%%
<br>
</body>
</html>

```

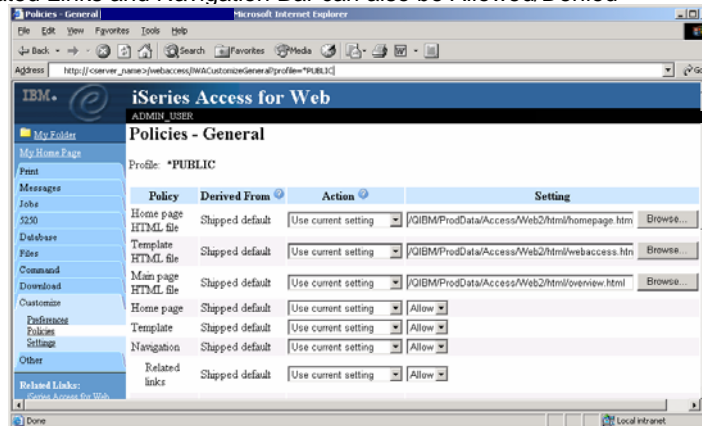
## Home Page/Template are Customized where?

- Customize tab --> Policies --> \*PUBLIC user, Select edit link for General category



## Home Page/Template are Customized where? (continued)

- Home page/Template HTML file fields indicate where to load source from for a user/group.
- Related Links and Navigation Bar can also be Allowed/Denied



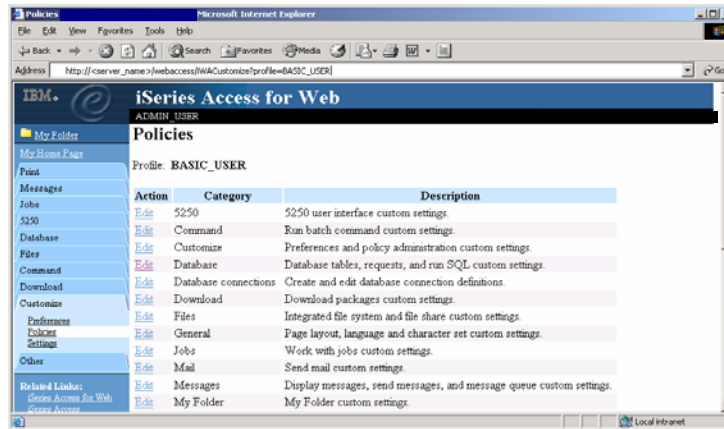
## ***E-mail Setup***

## **E-mail Customization**

- iSeries Access for Web allows you to e-mail...
  - Database query results, printer output PDFs, command completion notifications, etc.
  - E-mail notifications can also be sent when items are placed into personal folders.
- Using the Mail function...
  - Users must first have an email address configured for their user profile. The administrator may configure this or allow users to configure their own email address in the Mail settings.
  - The administrator must also specify the name of the SMTP mail server to be used by the user profile or group.
  - If the user has an SMTP user ID and SMTP domain defined in an iSeries directory entry, those values will be used, unless other values are entered into the iSeries Access for Web configuration.
  - Individual users may be restricted from using the Mail function using the Mail Preferences function.

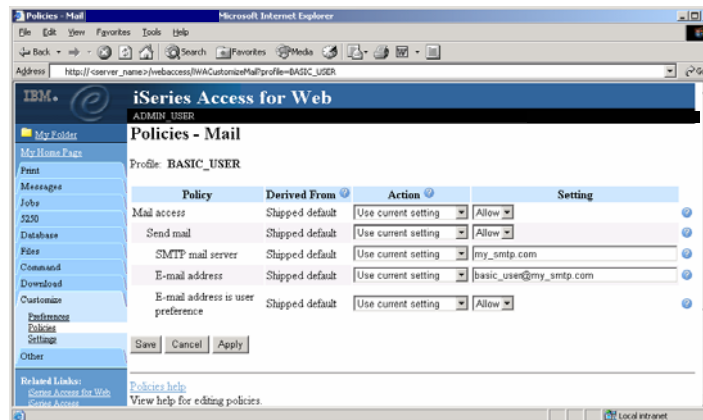
## Setting iSeries Access for Web to use E-mail

- Customize a selected profile
- Select the Mail edit link



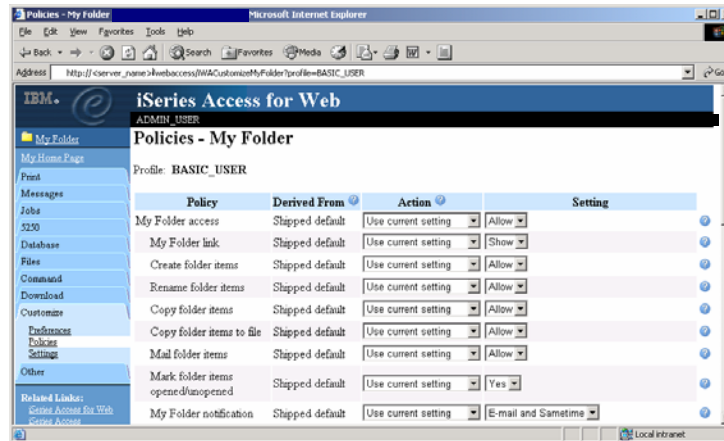
## Setting iSeries Access for Web to use E-mail (continued)

- Enter SMTP mail server name, enter E-mail address



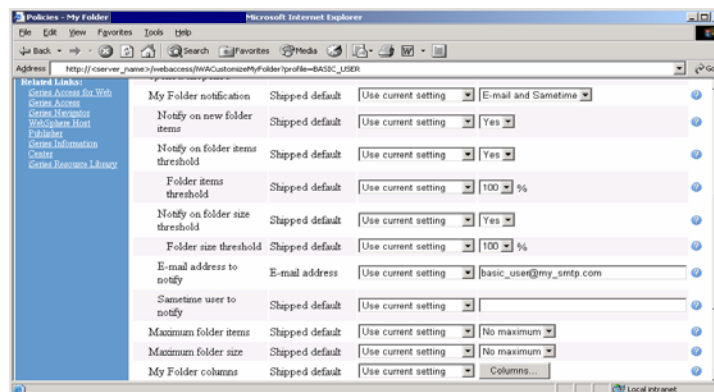
## Setting iSeries Access for Web to use E-mail (continued)

- Select My Folder link from main Customize categories page



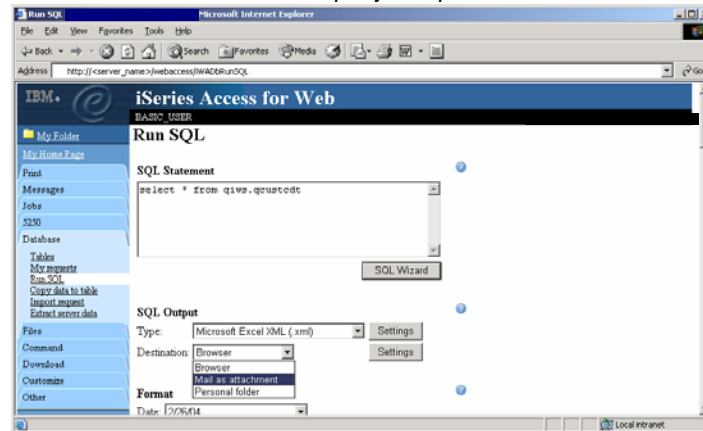
## Setting iSeries Access for Web to use E-mail (continued)

- Scroll down
- To get notified when items are added to Personal folder, enable it and add e-mail address



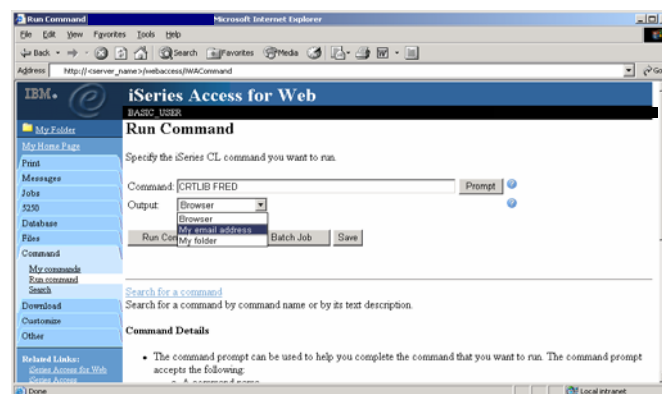
## Using iSeries Access for Web and E-mail

- From the Database function, the Excel formatted result from the Run SQL function can be e-mailed when the query completes.



## Using iSeries Access for Web and E-mail (continued)

- From the Command function, the output from the Run Command can be e-mailed when the query completes.

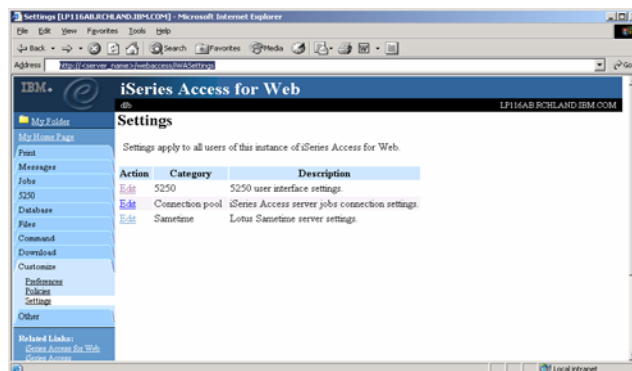


## New for V5R3

- New/Updated categories and policies
  - Sametime and Download new categories
  - Many 5250 policies added
- Page customization
  - The iWA Main page can be replaced
- File
  - File contents can be viewed in same window (new) or separate window (old way)
- Print
  - Choose preferred formats to preview various types of printer output
- My folder
  - Limit the folder's size and number of items
  - Sametime notification added
- Import/Export settings
  - Officially supports Mail and Sametime settings (Other policies should be included)
  - Pick a user or group for export
- User Interface rework
  - Simplify finding categories
  - Turn off related links section
  - Lock down entire functional categories
  - Online help for all policies

## New for V5R3 (continued)

- New Settings function
  - iSeries Access for Web global settings (timeouts, time intervals, ports, Community server, etc.)
  - Only administrators can access this function





## New Customization Items in the Beta

- Style sheet support
  - Allows look-and-feel customization of iSeries Access for Web content
- Transfer configuration data from one user to another
  - Move and copy operations supported for:
    - 5250 sessions and macros
    - Saved commands
    - Database requests
    - My Folder items
    - Policies
- New home page support
  - Usable navigation content
  - Update information and product links
- New product look
  - Using style sheet shipped with product
  - Action links are now images

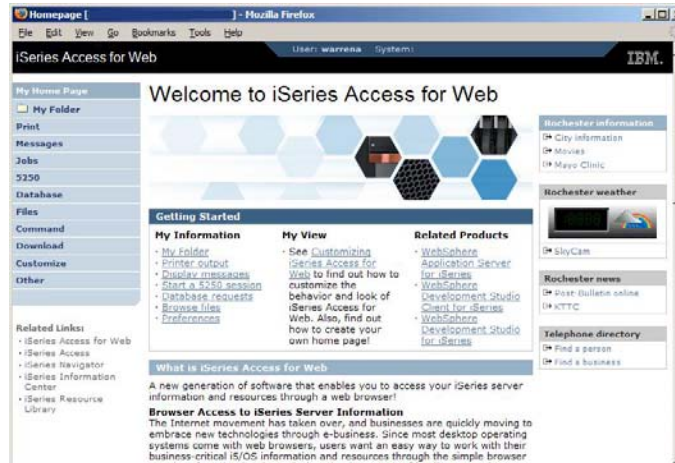
## Transfer Configuration Data

The screenshot shows a web browser window titled "Transfer Configuration Data" in Mozilla Firefox. The page is for "iSeries Access for Web" and is accessed by user "warrena" on "System:". The main content area is titled "Transfer Configuration Data" and contains the following sections:

- Profiles:** Two input fields for "From profile:" and "To profile:", each with a "Browse..." button and a help icon.
- Action to Perform:** Two radio buttons: "Copy" (selected) and "Move".
- Data to Transfer:** A list of checkboxes for "5250 sessions", "5250 macros", "Commands", "Database requests", "Folder items", and "Policies".
- Transfer Data:** A button at the bottom of the form.

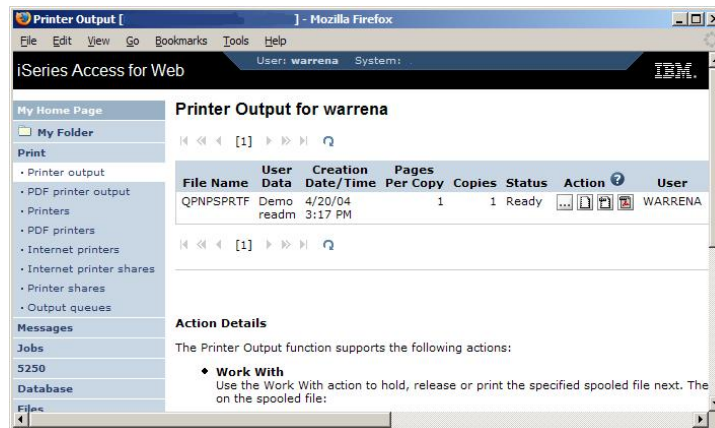
On the left side, there is a navigation menu with items like "My Home Page", "My Folder", "Print", "Messages", "Jobs", "5250", "Database", "Files", "Command", "Download", "Customize", "Preferences", "Policies", "Settings", "Transfer configuration", and "Other". At the bottom left, there are "Related Links" including "iSeries Access for Web".

## New Home Page



## New Product Look

- If you don't like the new look...
  - use Customize to change to use a custom template/style sheet
  - change to use text instead of images for action links
  - these settings are in General section of policies



## Summary - Customize

- Restrict access to function
- Customize look and feel
- Common interface for users/groups
- End user customization

Questions?

## iSeries & WebSphere Resources & Deliverables

iSeries Information Center  
<http://www.ibm.com/series/infocenter>

iSeries site  
[www.ibm.com/series](http://www.ibm.com/series)

iSeries WebSphere Application Server  
<http://www-1.ibm.com/servers/eserver/series/software/websphere/wsappserver/>

PartnerWorld for Developers, iSeries & WebSphere  
<http://www.ibm.com/series/infocenter/series/infocenter/partnerworld>

IBM eServer Solutions  
<http://www-1.ibm.com/servers/eserver/series/solutions/>

iSeries e-business Solutions  
<http://www-1.ibm.com/servers/eserver/series/ebusiness/>

iSeries B2B Solutions  
<http://www-1.ibm.com/servers/eserver/series/btob/>

Connect for iSeries  
<http://www-1.ibm.com/servers/eserver/series/btob/connect/v11high.html>

WebSphere Commerce Suite for iSeries  
<http://www-1.ibm.com/servers/eserver/series/ebusiness/wcs51.html>

iSeries and e-commerce  
<http://www-1.ibm.com/servers/eserver/series/ebusiness/ecommerce.htm>

iSeries HTTP Server  
<http://www-1.ibm.com/servers/eserver/series/software/http/index.html>

WebSphere Development Studio for iSeries  
<http://www-3.ibm.com/software/ad/wds400/>

iSeries and WebSphere References  
<http://www.as400.ibm.com/developer/java/solutions/jjem.html>  
<http://www2.software.ibm.com/casestudies/swcsweb.nsf/platform>

iSeries Solution Finder  
<http://www.ibm.com/series/solutionfinder/>

iSeries & Domino  
<http://www-1.ibm.com/servers/eserver/series/domino/>

Dedicated Server for Domino  
<http://www-1.ibm.com/servers/eserver/series/domino/dsd.html>

Workload Estimator for iSeries, WAS, WCS & Domino, HTTP Server, Java, etc.  
<http://as400service.ibm.com/estimator/>

iSeries Custom Technology Center  
<http://www-1.ibm.com/servers/eserver/series/service/ctc/>

iSeries Technical Support  
<http://as400service.ibm.com/>

iSeries Technical Studio  
<http://www.as400.ibm.com/tstudio/>

1st Install for iSeries & WebSphere Application Server  
<http://www.ibm.com/series/infocenter/series/infocenter/1stinstall>

iSeries ToolsNet (Tools & Middleware)  
<http://www.ibm.com/series/infocenter/series/infocenter/toolsnet>

iSeries & Services Network  
<http://as400service.ibm.com/supporthome.nsf/document/19251245>

iSeries e-business Handbook (SG24-5694-01)  
<http://www.redbooks.ibm.com/abstracts/sg245694.html>

## iSeries & WebSphere Resources & Deliverables

WebSphere Commerce Suite With Back-End Order Mgmt.  
<http://ibm.com/redbooks>

iSeries Technology Center  
<http://www.ibm.com/series/infocenter/series/infocenter/technologycenter>

iSeries University  
<http://www-3.ibm.com/services/learning/community/as400/>

WebSphere Application Server Overview  
<http://www-4.ibm.com/software/webservers/appserv/>

iSeries & WebSphere Documentation

Redbooks & Red Pieces

Form Numbers/Web Sites

Building iSeries Applications for WebSphere Advanced Edition	SG24-5691
Building Java Applications for the iSeries with VisualAge for Java	SG24-6245
Integrating WCS with Domino Back-End Applications	

• <http://ibm.com/redbooks> (search for REDP0141)

Java & WebSphere Performance on iSeries

• <http://publib-b.boulder.ibm.com/Redbooks.nsf/RedpieceAbstracts/sg246256.html?Open>

• iSeries Application Development Directions white paper is now available

• <http://www.ibm.com/series/infocenter/series/infocenter/developmentdirections>

• Connect for iSeries with WebSphere Commerce Suite Red Paper

• <http://www.redbooks.ibm.com/redpapers/pdfs/redp0127.pdf>

Tools for Application Reface and Redesign

• <http://www.as400.ibm.com/developer/comm/pidtechpapers.html?Tools>

Introduction to Enterprise JavaBeans for AS/400	SG24-5192-00
Web enabling AS/400 Applications with WebSphere Studio	SG24-5634-00
Building AS/400 Applications with WebSphere Standard Edition 2.0	SG24-5635-00
Building AS/400 C/S Apps with Java	SG24-2152-02
Building AS/400 Internet-based applications with Java	SG24-5337-00

# Trademarks and Disclaimers

© IBM Corporation 1994-2005. All rights reserved.  
References in this document to IBM products or services do not imply that IBM intends to make them available in every country.

The following terms are trademarks of International Business Machines Corporation in the United States, other countries, or both:

AS/400	e-business on demand	OS/400
AS/400e	IBM	i5/OS
eServer	IBM (logo)	
	iSeries	

Rational is a trademark of International Business Machines Corporation and Rational Software Corporation in the United States, other countries, or both. Java and all Java-based trademarks are trademarks of Sun Microsystems, Inc. in the United States, other countries, or both. Microsoft, Windows, Windows NT, and the Windows logo are trademarks of Microsoft Corporation in the United States, other countries, or both. Intel, Intel Inside (logos), MMX and Pentium are trademarks of Intel Corporation in the United States, other countries, or both. UNIX is a registered trademark of The Open Group in the United States and other countries. SET and the SET Logo are trademarks owned by SET Secure Electronic Transaction LLC. Other company, product or service names may be trademarks or service marks of others.

Information is provided "AS IS" without warranty of any kind.

All customer examples described are presented as illustrations of how those customers have used IBM products and the results they may have achieved. Actual environmental costs and performance characteristics may vary by customer.

Information concerning non-IBM products was obtained from a supplier of these products, published announcement material, or other publicly available sources and does not constitute an endorsement of such products by IBM. Sources for non-IBM list prices and performance numbers are taken from publicly available information, including vendor announcements and vendor worldwide homepages. IBM has not tested these products and cannot confirm the accuracy of performance, capability, or any other claims related to non-IBM products. Questions on the capability of non-IBM products should be addressed to the supplier of those products.

All statements regarding IBM future direction and intent are subject to change or withdrawal without notice, and represent goals and objectives only. Contact your local IBM office or IBM authorized reseller for the full text of the specific Statement of Direction.

Some information addresses anticipated future capabilities. Such information is not intended as a definitive statement of a commitment to specific levels of performance, function or delivery schedules with respect to any future products. Such commitments are only made in IBM product announcements. The information is presented here to communicate IBM's current investment and development activities as a good faith effort to help with our customers' future planning.

Performance is based on measurements and projections using standard IBM benchmarks in a controlled environment. The actual throughput or performance that any user will experience will vary depending upon considerations such as the amount of multiprogramming in the user's job stream, the I/O configuration, the storage configuration, and the workload processed. Therefore, no assurance can be given that an individual user will achieve throughput or performance improvements equivalent to the ratios stated here.

Photographs shown are of engineering prototypes. Changes may be incorporated in production models.