



IBM eServer iSeries

Session: 410068

Agenda Key: 33MN

## iSeries Access for Web Setup and Configuration

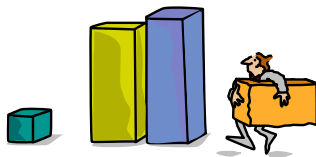
<http://www.ibm.com/eserver/series/access/web/>

Doug Beauchene  
IBM Rochester  
dougbeau@us.ibm.com

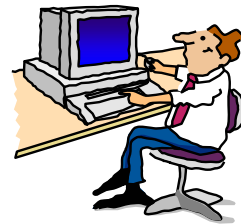
© Copyright IBM Corporation, 2005. All Rights Reserved.  
This publication may refer to products that are not currently  
available in your country. IBM makes no commitment to make  
available any products referred to herein.

why "i"? it's simple.

IBM eServer iSeries



## Ordering & Packaging



© 2005 IBM Corporation

why "i"? it's simple.

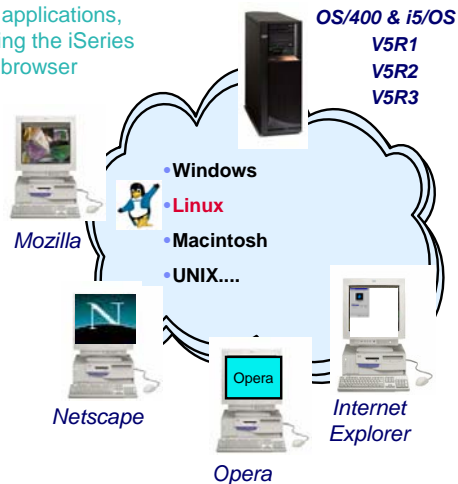
## iSeries Access Family - Packaging

<b>V5R3</b> <b>5722-XW1</b> <b>iSeries Access Family</b>	<b>V5R2</b> <b>5722-XW1</b> <b>iSeries Access Family</b>
<ul style="list-style-type: none"> <li>• iSeries Access for Windows, 5722-XE1, V5R3</li> </ul>	<ul style="list-style-type: none"> <li>• iSeries Access for Windows, 5722-XE1, V5R2</li> </ul>
<ul style="list-style-type: none"> <li>▪ iSeries Access for Web, 5722-XH2, V5R3</li> </ul>	<ul style="list-style-type: none"> <li>▪ iSeries Access for Web, 5722-XH2, V5R2</li> </ul>
<ul style="list-style-type: none"> <li>▪ HATS Limited Edition V5.0, 5724-F97-01</li> </ul>	<ul style="list-style-type: none"> <li>• WebSphere Host Publisher, 5724-B81, V4.0, 5724-B81, V4.01</li> <li>▪ HATS Limited Edition V4.0 5724-D34-01</li> </ul>
<ul style="list-style-type: none"> <li>• iSeries Access for Linux, 5722-XL1, V5R3</li> </ul>	
V5R2 customers not wanting to upgrade to i5/OS V5R3 but want the new V5R3 iSeries Access Family clients can order no-charge <b>Feature No. 2647 of Product No. 5722-XW1</b>	

## What is iSeries Access for Web?

End users can leverage business information, applications, and resources across an enterprise by extending the iSeries resources to the client desktop through a web browser

- Provides access to iSeries through a browser
  - 5250 access
  - Access to database, integrated file system, printers, output queues, jobs
  - Can run batch commands and send/receive messages
- It has the following advantages:
  - Is server based
  - Requires only a browser on the client, no configuration required at desktop, no applets installed on desktop
  - Uses industry standard protocols - HTTP, HTTPS and HTML



## iSeries Access for Web - Beta

### ***Beta iSeries Access for Web is now available!***

- Enhancements in these areas...
  - Single sign-on is now supported when running in a WebSphere Application Server environment.
  - The 5250 function has bypass sign-on support and HTML DDS keyword support.
  - User interface customization can be performed using style sheets.
  - Open Office spreadsheet support for Database functions.
  - The SQL statement from Query Manager and Query for iSeries query files can be imported into Database requests.
  - Additional enhancements for 5250 emulation, Database, Customization, and more.

For more details, check the What's New section in the Beta readme.

## iSeries Access for Web - Beta

### ***Beta iSeries Access for Web is now available!***

- Supported environments
  - V5R2 OS/400 and V5R3 i5/OS
  - Portal servers
    - WebSphere Portal for iSeries V5.0.2.2
    - WebSphere Portal for iSeries V5.1.0.1
    - IBM Workplace Services Express V2.5
  - Web application servers
    - WebSphere Application Server V6.0 for OS/400 (Base, Express, ND)
    - WAS V5.1 for iSeries (Base and ND)
    - WAS V5.0 for iSeries (Base and ND)
    - WAS – Express for iSeries V5.1
    - WAS – Express for iSeries V5.0
    - Apache Software Foundation's Jakarta Tomcat (included with IBM HTTP Server)

## iSeries Access for Web - Beta

### **Beta iSeries Access for Web is now available!**

- Downloading, installing, and configuring Beta iSeries Access for Web
  - <http://www.ibm.com/eserver/series/access/web/>
  - Use “Installing Beta iSeries Access for Web” section of the Beta readme
    - <http://www.ibm.com/eserver/series/access/web/pdf/readme.pdf>
  - Let us know what you think...what you like, don't like, problems you encounter
  - The Beta does not coexist with V5R2/V5R3 iSeries Access for Web.

## Client Browser Requirements

- These browsers have been tested with **V5R3** iSeries Access for Web:
  - Netscape 4.7 (AIX)
  - Netscape 7.0 (Windows, Linux)
  - Internet Explorer 6.0 with Service Pack 1 (Windows)
  - Opera 7.11 (Windows, Linux)
  - Mozilla 1.3 and 1.4 (Windows, Linux)
  - Other browsers that support the current HTTP and HTML specifications should work, but have not been tested with iSeries Access for Web.
- These browsers have been tested with **V5R2** iSeries Access for Web:
  - Netscape 4.7 (AIX, Linux)
  - Netscape 6.2 (Windows)
  - Internet Explorer 6.0 (Windows)
  - Opera 6.0 (Windows)
  - Opera 5.0 (Linux)
  - Other browsers that support the current HTTP and HTML specifications should work, but have not been tested with iSeries Access for Web.

- **Set browser to allow 'Cookies'**

- iSeries Access for Web requires that the web browser allow cookies. Set the cookie configuration option to allow cookies.

## iSeries server Software Requirements

Product Number	Product Name	Option	\$
5722-SS1	OS/400 V5R1, V5R2, or i5/OS V5R3	Base	w/HW
5722-SS1	OS/400 - Extended Base Directory Support	3	N/C
5722-SS1	OS/400 - AFP Compatibility Fonts	8	N/C
5722-SS1	OS/400 - Host Servers	12	N/C
5722-SS1	Operating System/400 QShell Interpreter	30	N/C
5722-SS1	<ul style="list-style-type: none"> <li>If you plan to use Secure Sockets Layer (SSL): OS/400 Digital Certificate Manager</li> <li>Cryptographic Access Provider (128-bit)</li> </ul>	34	N/C
5722-AC3			N/C
5722-DG1	IBM HTTP Server for iSeries	Base	N/C
5722-JV1	Developer Kit for Java	Base	N/C
	Developer Kit for Java Version 1.2	3	N/C
	Developer Kit for Java Version 1.3	5	N/C
	Developer Kit for Java Version 1.4	6	N/C
	(Check WebSphere doc for required version)		
5722-JC1	Toolbox for Java	Base	N/C
5722-TC1	TCP/IP Connectivity Utilities for iSeries	Base	N/C

## iSeries server Software Requirements (continued)

Product Number	Product Name	Option	\$
5722-XW1	iSeries Access Family	Base	\$
5722-XH2	iSeries Access for Web <ul style="list-style-type: none"> <li>Ships with 5722-XW1 iSeries Access Family</li> <li>V5R2 iSeries Access for Web runs on OS/400 V5R1 and V5R2</li> <li>V5R3 iSeries Access for Web runs on OS/400 V5R2 and i5/OS V5R3</li> </ul>	Base	part of XW1
5722-IP1	IBM Info Print Server (optional -- enables best PDF output)	Base	\$

## iSeries server Software Requirements (continued)

Product Number	Product Name	Option	\$
	<u>One or more of the following web servers</u>		
5733-W60	• WebSphere Application Server V6.0 for OS/400 (all three editions)	See documentation	\$
5722-E51	• WebSphere Application Server V5.1 - Express for iSeries		\$
5733-W51	• WebSphere Application Server V5.1 (Base and ND)		\$
5722-IWE	• WebSphere Application Server V5.0 - Express for iSeries		\$
5733-WS5	• WebSphere Application Server V5.0 (Base and ND)		\$
5733-WA4	• WebSphere Application Server V4.0 Advanced Edition		\$
5733-WS4	• WebSphere Application Server V4.0 Advanced Single Server Edition		
5722-DG1	• Apache Software Foundation Tomcat		N/C
*	• WebSphere Portal for iSeries (Express and Express Plus) V5.0.2.2		\$
*	• WebSphere Portal V5.1.0.1		\$
*	• IBM Workplace Services Express V2.5		\$

- Refer to the documentation for the individual web serving environments additional requirements that may not be listed above.

- WebSphere <http://www.ibm.com/servers/eserver/series/software/websphere/wsappserver/>
- ASF Tomcat <http://www.ibm.com/servers/eserver/series/software/http/>
- Portal V5.0.2.2 <http://publib.boulder.ibm.com/pvc/wp/502/smb/en/InfoCenter/index.html>
- Portal V5.1.0.1 <http://publib.boulder.ibm.com/infocenter/wp51help/index.jsp>
- Workplace V2.5 <http://publib.boulder.ibm.com/infocenter/wseic/v2r5/index.jsp>

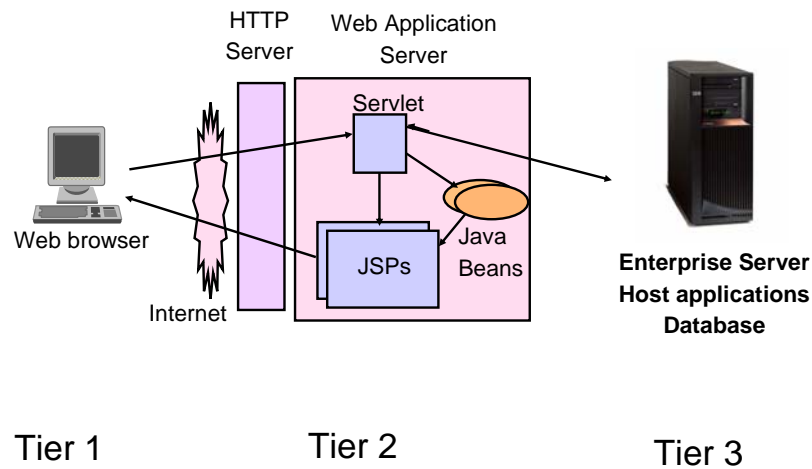
All of the above sites are available from the Library section of the iSeries Access for Web website at <http://www.ibm.com/servers/eserver/series/access/web/>

## The formula for a successful setup and configuration experience!

- You need to do the following in this order:
  1. [Decide what web application server environment to run within.](#)
  2. Install iSeries Access for Web on your server
  3. Verify, load, apply any additional PTFs you may need
    - Cumulative PTF package
    - WebSphere, ASF Tomcat, HTTP Server for iSeries
    - iSeries Access for Web
  4. Setting up web-serving environment.
  5. Configure and Start iSeries Access for Web.
  6. Verify the installation and configuration

- These steps are detailed in SC41-5518-01 iSeries Access for Web - Installation and Usage guide
  - Available in HTML and PDF at: <http://www.ibm.com/eserver/series/access/web/>
  - Example documents are also available
  - In V5R3 Install/Usage guide and example documentation are tied together

## First you need a web-serving environment



## Pieces of the web-serving environment

- HTTP Server (powered by Apache)
  - Front door for your server into your web serving environment
  - HTTP/HTTPS (SSL)
  - Listens for web requests on a specific TCP/IP port
  - Routes web requests between end-user browser and a web application sever
- Web application server
  - WebSphere Application Server and/or ASF Tomcat
  - Provides a java virtual machine environment where web applications run
- Web application
  - iSeries Access for Web
  - Provides specific function that users access using a web browser
  - Deployed/installed within a web application server
- WebSphere Portal
  - Web application deployed to WebSphere Application Server
  - Provide environment in which portlets are deployed and run.

## Determining what web application server environment to use



**Apache Software Foundation  
Jakarta Tomcat**

## WebSphere Application Server

IBM's strategic web application server is WebSphere Application Server.

IBM WebSphere Application Server for IBM iSeries is an e-business application deployment environment built on open standards-based technology. It is the cornerstone of WebSphere application offerings and services.

Customers who require a robust and scalable web application server will select WebSphere Application Server.

The available versions of WebSphere Application Server include

- WebSphere Application Server v6.0 for OS/400
  - Base, Express, Network Deployment editions
  - 5733-W60 options 1, 2, 3
  - iSeries Access for Web does not support WebSphere instances that are federated to the WebSphere ND environment.
- WebSphere Application Server v5.1
  - 5722-E51 Express for iSeries
  - 5733-W51 Base edition
- WebSphere Application Server v5.0
  - 5722-IWE Express for iSeries
  - 5733-WS5 Base edition
- WebSphere Application Server Network Deployment v5.0/5.1 for iSeries ("Network Deployment Edition")
  - WebSphere Base Edition must be installed
  - iSeries Access for Web does not support WebSphere instances that are federated to the WebSphere ND environment.

For more information refer to

<http://www.ibm.com/servers/eserver/series/software/websphere/wsappserver/>



## Apache Software Foundation (ASF) Jakarta Tomcat

Included with the IBM HTTP Server (Powered by Apache) for iSeries (5722-DG1)

ASF Jakarta Tomcat provides basic web application server capability for iSeries customers.

- ASF Jakarta Tomcat provides a way to "get started" with Java server-side components and web application serving.
- ASF Jakarta Tomcat provides a basic web application server that supports Servlets and JavaServer Pages.

ASF Jakarta Tomcat provides less function and capabilities compared to IBM's WebSphere Application Server. For example Jakarta Tomcat:

- Does not support Enterprise JavaBeans
- It is not J2EE compliant
- It doesn't provide Domino integration

The IBM HTTP Server includes an industry standard Java Servlet and JavaServer Pages engine.

This engine is based on technology from the **Apache Software Foundation's Jakarta Tomcat** project.

- Included in 5722-DG1 for V5R3 and V5R2
- Provided as PTFs to 5722-DG1 for V5R1

For more information refer to  
<http://www.ibm.com/servers/eserver/iseries/software/http/services/tomcat.html>

## Web serving environment options

- There are several Web serving environments that can run be used with iSeries Access for Web:
  - WebSphere Application Server V6.0 for OS/400 
    - Base, Express, Network Deployment
  - IBM WebSphere Portal – Express/Express Plus for Multiplatforms V5.0.2.2
  - IBM WebSphere Portal V5.1.0.1
  - IBM Workplace Services Express V2.5
  - WebSphere Application Server V5.1 - Express for iSeries 
  - WebSphere Application Server V5.1 for iSeries (Base and Network Deployment)
  - WebSphere Application Server V5.0 - Express for iSeries
  - WebSphere Application Server V5.0 for iSeries (Base and Network Deployment)
  - ASF Tomcat (included in IBM HTTP Server for iSeries)
    - The ASF Tomcat web application server is part of the no-charge IBM HTTP Server for iSeries (5722-DG1)
    - ASF Tomcat PTFs are delivered within the IBM HTTP Server for iSeries Group HTTP PTFs.

## Performance...???

- Does running Access for Web affect server performance?
  - Products like Access for Web don't put much strain on the system...
- How does the web application server affect performance?
  - If you have an older, under-powered iSeries, then performance may not be good...if you have a newer, bigger iSeries, then performance won't be an issue (unless you already are running your system at maximum capacity).
  - Use the [IBM eServer Workload Estimator](http://www-912.ibm.com/wle/EstimatorServlet) to see what performance will be if WAS is added to your system at: <http://www-912.ibm.com/wle/EstimatorServlet>
  - There is also a Workload Estimator for [WebFacing](#) Workloads. Access for Web will be similar (depending on what functions of Access for Web are being used).
- Fine-tuning your web application server
  - If you are running WebSphere Application Server, refer to Chapter 3 of the Buying and Selling Guide for WAS. It has many good tips for getting WAS to perform optimally.
  - Go to the iSeries WebSphere web page at <http://www.ibm.com/servers/eserver/series/software/websphere/index2.html>

## <http://www-912.ibm.com/wle/EstimatorServlet>

IBM eServer Workload Estimator - Microsoft Internet Explorer

Address: <http://www-912.ibm.com/wle/EstimatorServlet>

Search for: hitachi rochester mn

IBM Workload Estimator

File Edit View Favorites Tools Help

Home | Products & services | Support & downloads | My account

Version: 2004.2 fix.1  
21-May-04  
www-912

### Basic Workload Selection

Add Workloads to This Solution: (help)

Solution: MySolution

Add:

- [Domino Workload](#)
- [Existing Workload](#)
- [File Serving \(Linux\) Workload](#)
- [Generic Workload](#)
- [HTTP Workload](#)
- [Network Infrastructure \(Linux\) Workload](#)
- [Linux DB2 UDB Workload](#)
- [Traditional Workload](#)
- [Web Serving Workload](#)
- [Web Serving \(Linux\) Workload](#)
- [WebFacing Workload](#)
- [WebSphere Workload](#)
- [WebSphere \(Linux\) Workload](#)
- [WebSphere Commerce Workload](#)
- [WebSphere Portal Server Workload](#)

## iSeries server Hardware Requirements

- Server models/Processor features/Memory
- Refer to the web application server documentation to determine what server models, processor features, and the memory requirements are for your web application server
  - WebSphere
    - <http://www.ibm.com/servers/eserver/series/software/websphere/wsappserver/>
  - ASF Tomcat
    - <http://www.ibm.com/servers/eserver/series/software/http/>
  - WebSphere Portal Express/Express Plus for iSeries V5.0.2.2
    - <http://publib.boulder.ibm.com/pvc/wp/502/smb/en/InfoCenter/index.html>
  - WebSphere Portal V5.1.0.1
    - <http://publib.boulder.ibm.com/infocenter/wp51help/index.jsp>
  - Workplace Services Express V2.5
    - <http://publib.boulder.ibm.com/infocenter/wseic/v2r5/index.jsp>
- Server disk space      Software product
  - 275MB                      iSeries Access for Web

## Step 2

- You need to do the following in this order:
  1. Decide what web application server environment to run within.
  2. [Install iSeries Access for Web on your server](#)
  3. Verify, load, apply any additional PTFs you may need
    - Cumulative PTF package
    - WebSphere, ASF Tomcat, HTTP Server for iSeries
    - iSeries Access for Web
  4. Setting up web-serving environment.
  5. Configure and Start iSeries Access for Web.
  6. Verify the installation and configuration

## Install iSeries Access for Web on your server



## Installing either V5R2 or V5R3 iSeries Access for Web

- Use the RSTLICPGM command to restore 5722-XH2 to the server using the distribution media (i.e. CD-ROM).
  - RSTLICPGM LICPGM(5722XH2) DEV(OPT01) OPTION(\*BASE)
- The restore will...
  - Create library QIWA2 and objects in QIWA2
  - Create IFS directories
    - /QIBM/ProdData/Access/Web2/...
    - /QIBM/UserData/Access/Web2/...
  - Set basic authorities to IFS objects

### The restore will not...

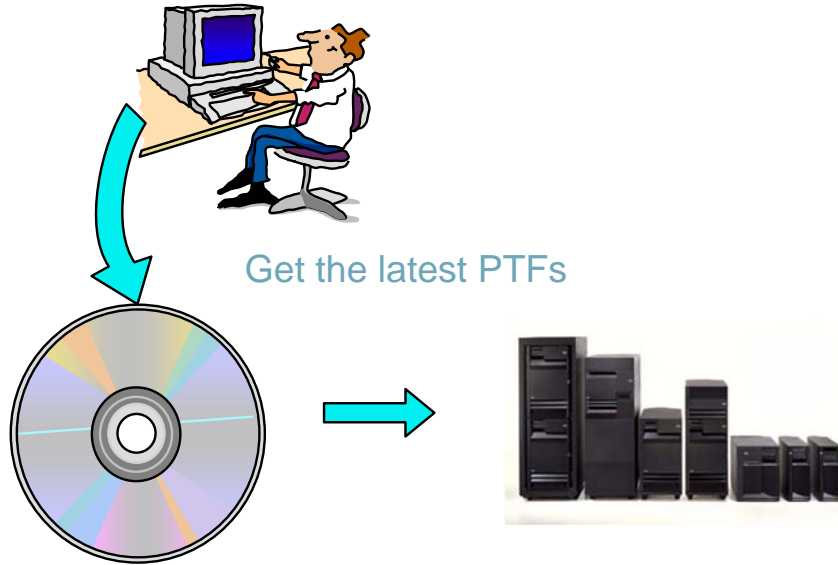
- Make any changes to HTTP server configurations.
- Make any changes to web application server configurations.
- Alter/change the V5R1 iSeries Access for Web installation/configuration if you have this on your iSeries server

## Installing either V5R2 or V5R3 iSeries Access for Web

- No coexistence between V5R2 and V5R3 iSeries Access for Web
  - If V5R2 iSeries Access for Web is installed on the server, installing V5R3 will replace the V5R2 version.
  - Will need to run CFGACCWEB2 after installing V5R3 iSeries Access for Web to enable new function

## Step 3

- You need to do the following in this order:
  1. Decide what web application server environment to run within.
  2. Install iSeries Access for Web on your server
  3. Verify, load, apply any additional PTFs you may need
    - Cumulative PTF package
    - WebSphere, ASF Tomcat, HTTP Server for iSeries
    - iSeries Access for Web
  4. Setting up web-serving environment.
  5. Configure and Start iSeries Access for Web.
  6. Verify the installation and configuration



## WebSphere Application Server PTFs

<http://www.ibm.com/servers/eserver/series/software/websphere/wsappserver/>

- Click the PTFs link, click the link for server release/WebSphere version

### Latest server Cumulative PTF package

- The WebSphere group PTFs identify what level of OS/400 or i5/OS cumulative PTF package is required.

### Verify your server has the latest available PTFs

- Each web application server version has a group PTF.
- The group PTFs include PTFs for WebSphere as well as other group PTFs (database, HTTP server, Java, etc.).

#### • V5R3 servers

- WRKPTFGRP SF99301
- WRKPTFGRP SF99275
- WRKPTFGRP SF99285
- WRKPTFGRP SF99286
- WRKPTFGRP SF99272
- WRKPTFGRP SF99287
- WRKPTFGRP SF99288
- WRKPTFGRP SF99289
- WRKPTFGRP SF99290

- v6.0 for OS/400
- v5.1 Express for iSeries
- v5.1 Base Edition
- v5.1 Network Deployment Edition
- v5.0 Express for iSeries
- v5.0 Base Edition
- v5.0 Network Deployment Edition
- v4.0 Advanced Edition
- v4.0 Advanced Single Server Edition

#### • V5R2 servers

- WRKPTFGRP SF99300
- WRKPTFGRP SF99274
- WRKPTFGRP SF99277
- WRKPTFGRP SF99279
- WRKPTFGRP SF99271
- WRKPTFGRP SF99245
- WRKPTFGRP SF99246
- WRKPTFGRP SF99148
- WRKPTFGRP SF99149

- v6.0 for OS/400
- v5.1 Express for iSeries
- v5.1 Base Edition
- v5.1 Network Deployment Edition
- v5.0 Express for iSeries
- v5.0 Base Edition
- v5.0 Network Deployment Edition
- v4.0 Advanced Edition
- v4.0 Advanced Single Server Edition

#### • V5R1 servers

- DSPDTAARA QASE51/SF99273
- DSPDTAARA QEJBAS51/SF99276
- DSPDTAARA QEJBAS51/SF99278
- DSPDTAARA QIWE/SF99270
- DSPDTAARA QEJBAS5/SF99243
- DSPDTAARA QEJBASND5/SF99244
- DSPDTAARA QEJBADV4/SF99241
- DSPDTAARA QEJBAES4/SF99242

- v5.1 Express for iSeries
- v5.1 Base Edition
- v5.1 Network Deployment Edition
- v5.0 Express for iSeries
- v5.0 Base Edition
- v5.0 Network Deployment Edition
- v4.0 Advanced Edition
- v4.0 Advanced Single Server Edition

## Server and HTTP/Tomcat PTFs

- Latest Server Cumulative PTF package
  - The WebSphere group PTFs identify what level of OS/400 or i5/OS package is required
  - <http://www.ibm.com/servers/eserver/series/software/websphere/wsappserver/services/service.htm>
    - Follow the PTF link.
  
- HTTP Server/ASF Tomcat server
  - <http://www.ibm.com/servers/eserver/series/software/http>
    - Click the PTFs and Support link, click the link for the server release/version
  - V5R3 servers
    - WRKPTFGRP SF99099
  - V5R2 servers
    - WRKPTFGRP SF99098
  - V5R1 servers
    - DSPDTAARA QHTTPSVR/SF99156

## Portal and Workplace PTFs

- Refer to the Portal and Workplace Information Center documentation
- IBM WebSphere Portal – Express/Express Plus for iSeries V5.0.2.2
  - <http://publib.boulder.ibm.com/pvc/wp/502/smbi/en/InfoCenter/index.html>
- IBM WebSphere Portal V5.1.0.1
  - <http://publib.boulder.ibm.com/infocenter/wp51help/index.jsp>
- IBM Workplace Services Express V2.5
  - <http://publib.boulder.ibm.com/infocenter/wseic/v2r5/index.jsp>

The above website links are also available in the Library section  
of the iSeries Access for Web website  
<http://www.ibm.com/servers/eserver/series/access/web/>

## Access for Web - PTFs


- <http://www.ibm.com/eserver/series/access/web/servicepacks.htm>
- V5R3
  - SI18964
    - Contains support for WAS v6.0, Portal V5.1.0.1, Workplace Services Express V2.5
  - Linux i386 rpm - SI16366
  - Linux ppc rpm - SI16367
  - AFP Plugin Viewer - SI14371
- V5R2
  - SI16652
    - Contains support for WAS v6.0
- Always have to check the cover letter special instructions, often will have to run CFGACCWEB2 to enable changes.

## Step 4

- You need to do the following in this order:
  1. Decide what web application server environment to run within.
  2. Install iSeries Access for Web on your server
  3. Verify, load, apply any additional PTFs you may need
    - Cumulative PTF package
    - WebSphere, ASF Tomcat, HTTP Server for iSeries
    - iSeries Access for Web
  4. [Setting up web-serving environment.](#)
  5. Configure and Start iSeries Access for Web.
  6. Verify the installation and configuration



IBM eServer iSeries



Setting up web-serving environment

HTTP Server for iSeries

IBM WebSphere




© 2005 IBM Corporation

why "i"? it's simple.

IBM eServer iSeries

## IBM Web Administration for iSeries

- STRTCPSVR \*HTTP HTTPSVR(\*ADMIN)
- http://<your\_server\_name>:2001



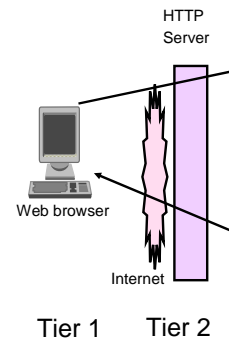
© 2005 IBM Corporation

why "i"? it's simple.

## HTTP Server for iSeries

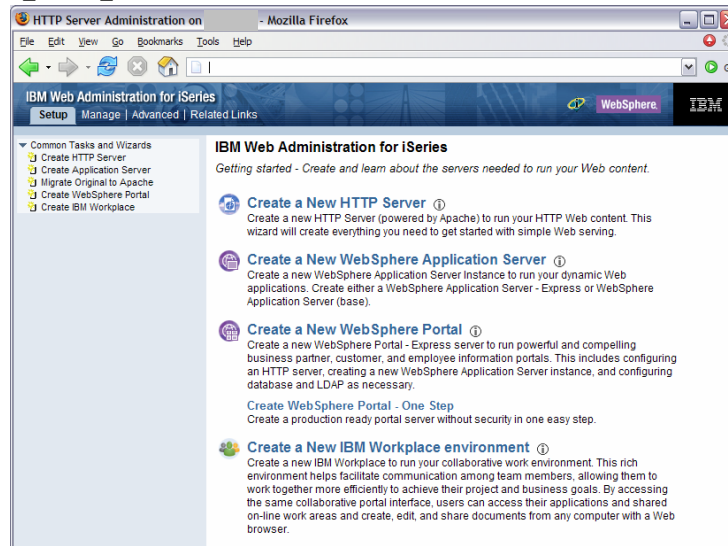
### Pieces of the web-serving environment

- HTTP Server (powered by Apache)
  - Front door for your server into your web serving environment
  - HTTP/HTTPS (SSL)
  - Listens for web requests on a specific TCP/IP port
  - An HTTP server is configured to "talk" to a specific web application server
  - Routes web requests between an end-user browser and a web application server



## Use iSeries wizards to create HTTP Server

[http://<your\\_server\\_name>:2001/HTTPAdmin](http://<your_server_name>:2001/HTTPAdmin)



## Information / Tips

- To start/stop the IBM Web Administration for iSeries interface
  - STRTCPSVR \*HTTP HTTPSVR(\*ADMIN)
  - ENDTCPSPVR \*HTTP HTTPSVR(ADMIN)
  
- To access the IBM Web Administration for iSeries interface
  - http://<your\_server\_name>:2001/HTTPAdmin
  
- CL commands to start/stop the HTTP servers
  - STRTCPSVR \*HTTP HTTPSVR(<my\_http\_server\_name>)
  - ENDTCPSPVR \*HTTP HTTPSVR(<my\_http\_server\_name>)
  
- HTTP servers run under the QHTTPSVR subsystem

## WebSphere Application Server – General

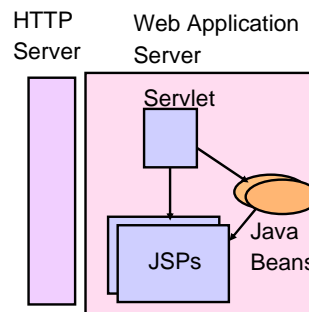
### **Pieces of the web-serving environment**

WebSphere provides an environment that allows for the deployment and management of web based applications

- Such as iSeries Access for Web

Many different WAS versions can be installed and coexist on an iSeries server simultaneously

- WebSphere coexistence does require that each WebSphere installation use a different set of ports.



Tier 2



## WebSphere Application Server – Instances

A WAS instance provides an environment to deploy and manage web based applications

(such as iSeries Access for Web)

- Each instance contains a web application server
  - The application server provides the Java Virtual Machine where the web application runs.
- A single WebSphere instance/web application server will handle most scalability and isolation needs.
- All web applications running within a web application server share the same name space.

You could create multiple instances on a single iSeries server for the following reasons:

- To create separate development environments for different developers. This allows them to have different versions of the same objects in their own name space.
- To create separate development and test environments
- Additional instances/web application servers can be created using the IBM Web Administration for iSeries interface

## WAS Terminology

WAS Terminology	Description
Node	In the iSeries environment, node means machine. This can be a real iSeries machine with a single image or it can be a logical partition (LPAR).
Instance	This is a combination of one or more WAS application servers and an administrative console that controls the configuration of its application servers.
Application server	You may create one or many application servers within a single WAS instance. Each server has its own Java Virtual Machine (JVM) but shares a single common console interface. This is true in both the WAS Express and WAS Base versions.
Virtual Host	A virtual host is a logical entity that is used to map HTTP servers or the built-in HTTP Server to domain names, IP address and ports that are allowed to communicate with a specific application server. This facility is used to help ensure that requests received by a specific HTTP Server are only processed by specific application servers.
Application	At WAS V5, an application means all of your Java objects, properties files, and other resources bundled into an enterprise archive (EAR) or Web archive (WAR) file.
Cell	A cell is a logical configuration that groups multiple nodes that are administered via the Deployment Manager (WAS ND) from a single point. WAS Express and WAS Base contain a single default cell. The cell exists but is invisible to users.
Cluster	A cluster is similar to a cell but is a logical grouping that contains multiple application servers in a WAS ND configuration. WAS Express and WAS Base contain a single cluster that's invisible to the user.

## WAS V6.0 - Information/Tips

- Subsystem
  - Runs in QWAS6 subsystem
  - WRKACTJOB SBS(QWAS6)
  - Jobs (web application server) are named with the name of the web application server
- Instances vs. profiles
  - Previous WAS versions had “instances”. V6.0 has “profiles”.
  - A default profile is created named “default”. The web application server it contains is named “server1”.
- IFS
  - /QIBM/ProdData/WebSphere/AppServer/V6/Base/...
  - /QIBM/UserData/WebSphere/AppServer/V6/Base/...
    - Note: Profiles can be created to user specified paths, above is the default path.
- If using WAS Network Deployment product, the profile cannot be federated/managed in the Network Deployment environment

### Profiles

- A default profile is created named “default”.
- The application server it contains is named “server1”.

## WAS Express - Information/Tips

- V5.0
  - Runs in QASE5 subsystem
    - WRKACTJOB SBS(QASE5)
  - IFS paths
    - /QIBM/ProdData/WebASE/ASE5/...
    - /QIBM/UserData/WebASE/ASE5/<instance\_name>/...
- V5.1
  - Runs in QASE51 subsystem
    - WRKACTJOB SBS(QASE51)
  - IFS paths
    - /QIBM/ProdData/WebASE51/ASE/...
    - /QIBM/UserData/WebASE51/ASE/<instance\_name>/...
- Jobs within the subsystem
  - The web application server runs as a job under the subsystem. The job has the same name as the web application server.

### Instances

- A default instance is **not** created
- An instance must be created.
- Use the IBM Web Administration interface to create/manage the instances/application servers

## WAS Base edition - Information/Tips

- V5.0
  - Runs in QEJBAS5 subsystem
    - WRKACTJOB SBS(QEJBAS5)
  - IFS paths
    - /QIBM/ProdData/WebAS5/Base/...
    - /QIBM/UserData/WebAS5/Base/<instance\_name>/...
- V5.1
  - Runs in QEJBAS51 subsystem
    - WRKACTJOB SBS(QEJBAS51)
  - IFS paths
    - /QIBM/ProdData/WebAS51/Base/...
    - /QIBM/UserData/WebAS51/Base/<instance\_name>/...
- Jobs within the subsystem
  - The web application server runs as a job under the subsystem. The job has the same name as the web application server.
- If using WAS Network Deployment product, the instance cannot be federated/managed in the Network Deployment environment

### Instances

- A default instance is created named "default".
- The application server it contains is named "server1".

## ASF Tomcat - General

### Pieces of web-serving environment

- Use IBM Web Administration for iSeries to manage ASF Tomcat servers
  - To access the IBM Web Administration for iSeries interface
    - STRTCPSVR \*HTTP HTTPSVR(\*ADMIN)
    - http://<your\_server\_name>:2001
- CL commands to start/stop the ASF Tomcat servers (V5R2 OS/400 and later)
  - STRTCPSVR \*ASFATOMCAT  
TOMCATSVR(<my\_tomcat\_server\_name>)
  - ENDTCPSPVR \*ASFATOMCAT  
TOMCATSVR(<my\_tomcat\_server\_name>)
- ASF Tomcat servers run under the **QSYSWRK subsystem**
  - WRKACTJOB SBS(QSYSWRK)
  - Look for a job named the same as what you named the Tomcat Server

### HTTP Server for iSeries

ASF Tomcat is delivered as a part of the 5722-DG1 IBM HTTP Server product



A common configuration error is the use of ports

- One port is used by the HTTP server
- One port is used between the HTTP server and ASF Tomcat server
- Refer to the example documentation to see how each is specified

## Step 5

- You need to do the following in this order:
  1. Decide what web application server environment to run within.
  2. Install iSeries Access for Web on your server
  3. Verify, load, apply any additional PTFs you may need
    - Cumulative PTF package
    - WebSphere, ASF Tomcat, HTTP Server for iSeries
    - iSeries Access for Web
  4. Setting up web-serving environment.
  5. [Configure and Start iSeries Access for Web.](#)
  6. Verify the installation and configuration



## Access for Web - Documentation

- Use the available documentation
  - iSeries Access for Web - Beta
    - <http://www.ibm.com/eserver/series/access/web/index.html>
  - iSeries Access for Web - Installation and Usage
    - <http://www.ibm.com/eserver/series/access/web/doc.html>
  - Step by Step example documents
    - What/when to type, what/when to click
      - WAS 6.0
      - WAS 5.1
      - WAS 5.0
      - WebSphere Portal
      - Workplace
      - ASF Tomcat
      - HTTP servers for them
    - <http://www.ibm.com/eserver/series/access/web/doc.html>

## V5R3 Documentation

<http://www.ibm.com/eserver/series/access/web/doc.html>

	<b>V5R3 iSeries Access for Web - Installation and Usage</b>	PDF
	Available in: Belgian Dutch, Chinese Simplified Chinese Traditional, Czech, Dutch, English, German, Hungarian, Italian, Japanese, Korean, Portuguese, Romanian, Spanish, Swiss Italian	
	V5R3 iSeries Access for Web with <b>WebSphere Application Server (WAS) V6.0 for iSeries</b> – Setup/Configuration Example	PDF
	V5R3 iSeries Access for Web with WebSphere <b>Portal - Express</b> for iSeries V5.0 - Setup/Configuration Example	PDF
	V5R3 iSeries Access for Web with WebSphere Application Server (WAS) - <b>Express for iSeries V5.1</b> - Setup/Configuration Example	PDF
	V5R3 iSeries Access for Web with WAS - <b>Express for iSeries V5.0</b> - Setup/Configuration Example	PDF
	V5R3 iSeries Access for Web with <b>WAS V5.1 for iSeries (Base and Network Deployment Editions)</b> - Setup/Configuration Example	PDF
	V5R3 iSeries Access for Web with WAS <b>V5.0 for iSeries (Base and Network Deployment Editions)</b> - Setup/Configuration Example	PDF
	V5R3 iSeries Access for Web with <b>Apache Software Foundation (ASF) Tomcat</b> - Setup/Configuration Example	PDF
	URL Interfaces to iSeries Access for Web	PDF



## iSeries Access for Web - Commands

- Commands are provided to deploy and manage iSeries Access for Web

- Ease the complexity of deploying a web application
- Check dependencies
- Invoke appropriate WebSphere tool to deploy an application
- Perform additional setup
- Setup /QIBM/UserData structure
- Allows us to provide PTFs that make use of the normal PTF tools on the iSeries

### V5R3 iSeries Access for Web

- CL Commands used for...
  - WAS v5.0, v4.0
  - ASF Tomcat
- Script commands used for...
  - WAS v6.0, v5.1
  - WebSphere Portal, Workplace
  - PTF SI18964

### V5R2 iSeries Access for Web

- CL Commands used for...
  - WAS v4.0
  - ASF Tomcat
- Script commands used for...
  - WAS v6.0, v5.1, v5.0,
  - PTF SI16652

iSeries Access for Web documentation provides detail for using the commands  
<http://www.ibm.com/eserver/iseries/access/web/doc.html>

## iSeries Access for Web has 4 commands...



- Configure CFGACCWEB2
- Start STRACCWEB2
- End ENDACCWEB2
- Remove RMVACCWEB2

## iSeries Access for Web Command locations

**Command names and parameters are identical, they are just invoked differently.**

CL commands found in library QIWA2

- CFGACCWEB2 - Configure iSeries Access for Web into the web application server
- STRACCWEB2 - Start the iSeries Access for Web configuration
- ENDACCWEB2 - End a running iSeries Access for Web configuration
- RMVACCWEB2 - Remove the iSeries Access for Web configuration



Do not use the web administration interface or WebSphere Admin. console to configure (deploy) or remove iSeries Access for Web.

The iSeries Access for Web commands must be used.

Script commands found in IFS path

/QIBM/ProdData/Access/Web2/install

- cfgaccweb2      Configure iSeries Access for Web into the web application server
- straccweb2      Start the iSeries Access for Web configuration
- endaccweb2      End a running iSeries Access for Web configuration
- rmvaccweb2      Remove the iSeries Access for Web configuration

Script commands available in an iSeries Access for Web PTF

## iSeries Access for Web - Configuring

Run the CFGACCWEB2 command to configure iSeries Access for Web

- Before iSeries Access for Web can be used, it must be configured using this command.
- This command uses input configuration parameters to add application server and servlet configuration information to the web application server.
- No updates are made to the HTTP server configuration.

WebSphere Application Server specifics

- The WebSphere subsystem must be running before running CFGACCWEB2
- The WebSphere web application server must be running before running CFGACCWEB2
- The WebSphere web application server will need to be restarted after CFGACCWEB2

ASF Tomcat specifics

- If the Tomcat server is running when CFGACCWEB2 is run, restart it to pick up the CFGACCWEB2 changes.
  - STRTCPSVR SERVER(\*ASFTOMCAT)  
TOMCATSVR(<tomcat\_server\_name>)
  - ENDTCPSPV SERVER(\*ASFTOMCAT)  
TOMCATSVR(<tomcat\_server\_name>)

## iSeries Access for Web - Configuring Examples

- WebSphere Application Server V5.1 - Express for iSeries
  - This command configures iSeries Access for Web in an instance called "iwa51exp" that contains a web application server called "iwa51exp"
    - QSH
    - cd /QIBM/ProdData/Access/Web2/install
    - cfgaccweb2 -appsvrtype \*WAS51EXP -wasinst iwa51exp -appsvr iwa51exp
      - Note: The \*WAS51EXP value is case sensitive
  
- ASF Tomcat
  - This command configures iSeries Access for Web for the TESTTC Tomcat server and inputs the path that the Tomcat server was installed to and the user ID it runs under.
    - QIWA2/CFGACCWEB2 APPSVRTYPE(\*ASFTOMCAT) TCSVRNAME(TESTTC) TCHOMEDIR(/asftomcat/testtc) TCUSRPRF(QTMHHTTP)

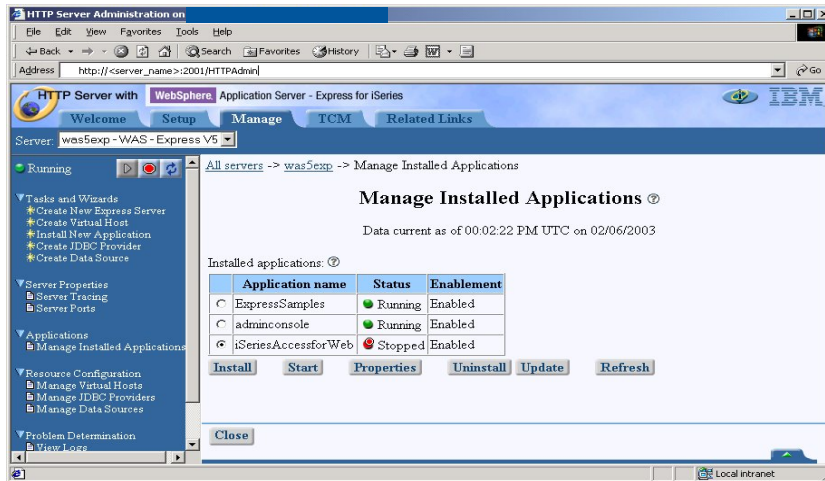
## iSeries Access for Web - Configuring Examples

- WebSphere Application Server V6.0 for iSeries
  - This command configures iSeries Access for Web in a profile called "iwa60" that contains a web application server called "iwa60"
    - QSH
    - cd /QIBM/ProdData/Access/Web2/install
    - cfgaccweb2 -appsvrtype \*WAS60 -wasprf iwa60 -appsvr iwa60
      - Note: The \*WAS60 value is case sensitive
      - Note: When working with WAS v6.0, the -wasprf parameter is used, not -wasinst
  
- WebSphere Portal V5
  - This command configures iSeries Access for Web to WebSphere Portal
    - QSH
    - cd /QIBM/ProdData/Access/Web2/install
    - cfgaccweb2 -appsvrtype \*WP50 -wasinst default -wppwd wpsadmin -wpurl<server\_name>:<port>/wps/config -wppag \*YES
      - Note: The \*WP50 value is case sensitive

## iSeries Access for Web - Verify configuration

WebSphere V5.1 - Express for iSeries

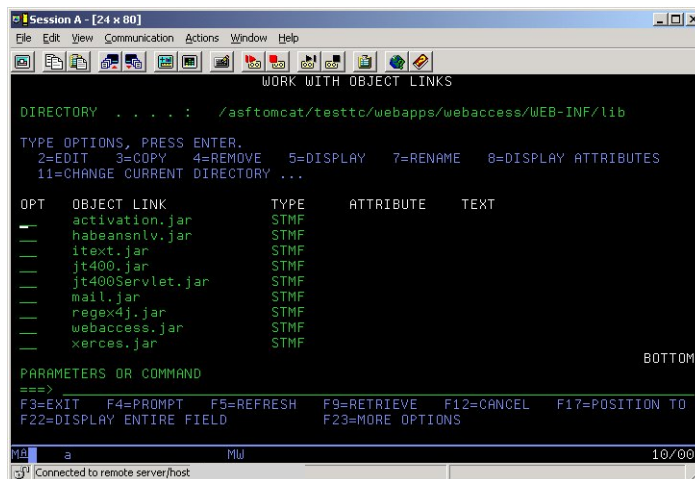
http://<server\_name>:2001/HTTPAdmin



## iSeries Access for Web - Verify configuration (continued)

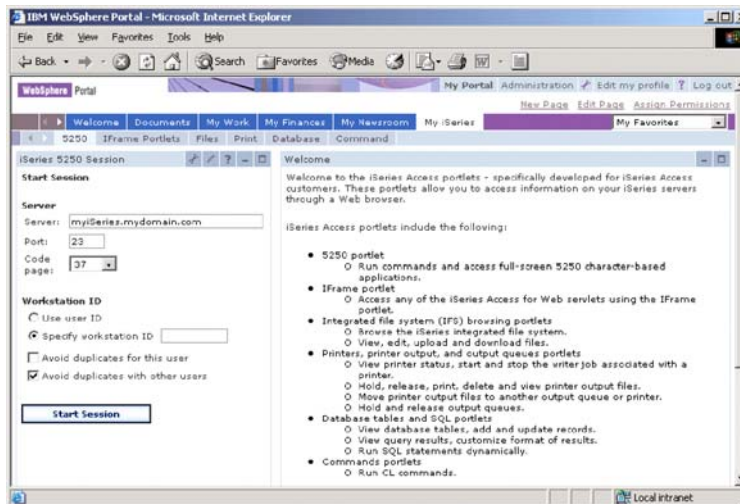
ASF Tomcat configuration verification using WRKLNK command

wrklnk '/QIBM/ASFTomcat/testtc/webapps/webaccess/WEB\_INF/lib'



## iSeries Access for Web - Verify configuration (continued)

WebSphere Portal V5 configuration verification using Portal



## iSeries Access for Web - Other commands

- Other iSeries Access for Web commands
  - To start the iSeries Access for Web web application
    - QIWA2/STRACCWEB2
    - /QIBM/ProdData/Access/Web2/install/straccweb2 -appsvrtype -wasinst -appsvr
    - This action could also be done using the web admin. interface or WAS admin. console
  - To end or stop the running iSeries Access for Web web application
    - QIWA2/ENDACCWEB2
    - /QIBM/ProdData/Access/Web2/install/endaccweb2 -appsvrtype -wasinst -appsvr
    - This action could also be done using the web admin. interface or WAS admin. console
  - To remove the iSeries Access for Web configuration
    - QIWA2/RMVACCWEB2
    - /QIBM/ProdData/Access/Web2/install/rmvaccweb2 -appsvrtype -wasinst -appsvr

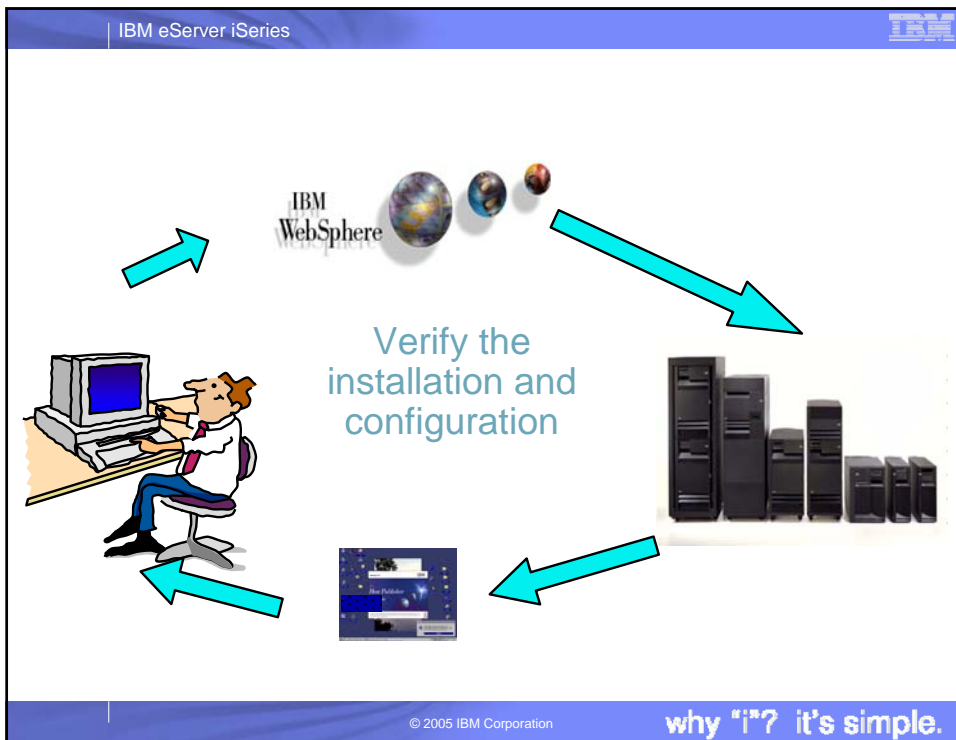
## WebSphere Application Server Tip

- Information/Tips

- JVM (java virtual machine) consideration
  - When iSeries Access for Web is configured, a property is set for the JVM of the application server that iSeries Access for Web is configured to. The property is
    - client.encoding.override
  - This property could conflict with other deployed web applications.
  - The resolution to a conflict is to run the conflicting applications in different instances of WebSphere.

## Step 6

- You need to do the following in this order:
  1. Decide what web application server environment to run within.
  2. Install iSeries Access for Web on your server
  3. Verify, load, apply any additional PTFs you may need
    - Cumulative PTF package
    - WebSphere, ASF Tomcat, HTTP Server for iSeries
    - iSeries Access for Web
  4. Setting up web-serving environment.
  5. Configure and Start iSeries Access for Web.
  6. [Verify the installation and configuration](#)



## Verify the installation and configuration

### HTTP Server

- Take a look at the subsystem to verify several jobs are running with the name of your HTTP server
  - WRKACTJOB SBS(QHTTPSVR)

### WebSphere Application Server

- Take a look at the subsystem to verify the application server you set up is running
 

-WRKACTJOB SBS(QWAS6)	V6.0 - WAS
-WRKACTJOB SBS(QASE5)	V5.0 - WAS Express for iSeries
-WRKACTJOB SBS(QASE51)	V5.1 - WAS Express for iSeries
-WRKACTJOB SBS(QEJBAS5)	V5.0 - WAS Base
-WRKACTJOB SBS(QEJBAS51)	V5.1 - WAS Base

### ASF Tomcat

- Take a look at the subsystem to verify the Tomcat server job you set up is running
  - WRKACTJOB SBS(QSYSWRK)

## Verify the installation and configuration (continued)

### iSeries Access for Web

- Open browser to `http://<server_name>:<port>/webaccess/iWAHome`
- Open browser to `http://<server_name>:<port>/webaccess/iWAMain`

## When things don't work...

### Verify

- The HTTP server is running.
- The WebSphere subsystem is running.
- The ASF Tomcat server is running.
- That you restarted the web application server after running CFGACCWEB2.
- That you have the latest group PTFs for the HTTP server and WebSphere Application Server.
- That iSeries Access for Web is listed as an installed application in the web application server (via the IBM Web Administration interface)

If the HTTP server is using a port other than 80, verify the alias information was added to the WebSphere default\_host alias table

- Not an issue if you used the IBM Web Administration for iSeries wizard to set up



## When things don't work...

### Check the log files first

- iSeries Access for Web
  - /QIBM/UserData/Access/Web2/logs/cmds.log      High level translated log
  - /QIBM/UserData/Access/Web2/logs/cmdstrace.log      Low level untranslated log
  - /QIBM/UserData/Access/Web2/logs/<appsrvtype>/<wasinst>/<appsrv>/logs/\*
    - Logs for specific WAS servers. Note: some logs may be EBCDIC requiring use of **WRKLNK** OS/400 command to view them
- WebSphere logs
  - WAS V5.0 Express for iSeries
    - /QIBM/UserData/WebASE/ASE5/<instance\_name>/logs/wsadmin.traceout
    - /QIBM/UserData/WebASE/ASE5/<instance\_name>/logs/activity.log
    - /QIBM/UserData/WebASE/ASE5/<instance\_name>/logs/<app\_server\_name>/ SystemOut.log
  - WAS V5.1 Express for iSeries
    - /QIBM/UserData/WebASE51/ASE/<instance\_name>/logs/wsadmin.traceout
    - /QIBM/UserData/WebASE51/ASE/<instance\_name>/logs/activity.log
    - /QIBM/UserData/WebASE51/ASE/<instance\_name>/logs/<app\_server\_name>/ SystemOut.log
    - /QIBM/UserData/WebASE51/ASE/<instance\_name>/logs/<app\_server\_name>/ SystemErr.log

## When things don't work...

- WebSphere logs (continued)
  - WAS V5.0 Base
    - /QIBM/UserData/WebAS5/Base/<instance\_name>/logs/wsadmin.traceout
    - /QIBM/UserData/WebAS5/Base/<instance\_name>/logs/activity.log
    - /QIBM/UserData/WebAS5/Base/<instance\_name>/logs/<app\_server\_name>/SystemOut.log
    - /QIBM/UserData/WebAS5/Base/<instance\_name>/logs/<app\_server\_name>/SystemErr.log
  - WAS V5.1 Base
    - /QIBM/UserData/WebAS51/Base/<instance\_name>/logs/wsadmin.traceout
    - /QIBM/UserData/WebAS51/Base/<instance\_name>/logs/activity.log
    - /QIBM/UserData/WebAS51/Base/<instance\_name>/logs/<app\_server\_name>/ SystemOut.log
    - /QIBM/UserData/WebAS51/Base/<instance\_name>/logs/<app\_server\_name>/SystemErr.log
  - WebSphere Portal V5.0.2.2
    - /QIBM/UserData/WebAS5/Base/<instance\_name>/logs/wsadmin.traceout
    - /QIBM/UserData/WebAS5/Base/<instance\_name>/logs/activity.log
    - /QIBM/UserData/WebAS5/Base/<instance\_name>/logs/<app\_server\_name>/SystemOut.log
    - /QIBM/UserData/WebAS5/Base/<instance\_name>/logs/<app\_server\_name>/SystemErr.log
    - /QIBM/UserData/WebAS5/Base/<instance\_name>/PortalServer5/log
  - WebSphere Portal V5.1.0.1 on WAS 6.0
    - /QIBM/UserData/WebSphere/AppServer/V6/Base/profiles/<profile\_name>/logs/wsadmin.traceout
    - /QIBM/UserData/WebSphere/AppServer/V6/Base/profiles/<profile\_name>/logs/activity.log
    - /QIBM/UserData/WebSphere/AppServer/V6/Base/profiles/<profile\_name>/<app\_server\_name>/SystemOut.log
    - /QIBM/UserData/WebSphere/AppServer/V6/Base/profiles/<profile\_name>/<app\_server\_name>/SystemErr.log
    - /QIBM/UserData/WebSphere/AppServer/V6/Base/profiles/<profile\_name>/PortalServer51/log

## When things don't work...

- WebSphere logs (continued)
  - WAS V6.0
    - /QIBM/UserData/WebSphere/AppServer/V6/Base/profiles/<profile\_name>/logs/wsadmin.traceout
    - /QIBM/UserData/WebSphere/AppServer/V6/Base/profiles/<profile\_name>/ logs/activity.log
    - /QIBM/UserData/WebSphere/AppServer/V6/Base/profiles/<profile\_name>/logs/<app\_server\_name>/SystemOut.log
    - /QIBM/UserData/WebSphere/AppServer/V6/Base/profiles/<profile\_name>/logs/<app\_server\_name>/SystemErr.log
  - WAS Network Deployment V6.0
    - /QIBM/UserData/WebSphere/AppServer/V6/ND/profiles/<profile\_name>/logs/wsadmin.traceout
    - /QIBM/UserData/WebSphere/AppServer/V6/ND/profiles/<profile\_name>/ logs/activity.log
    - /QIBM/UserData/WebSphere/AppServer/V6/ND/profiles/<profile\_name>/logs/<app\_server\_name>/SystemOut.log
    - /QIBM/UserData/WebSphere/AppServer/V6/ND/profiles/<profile\_name>/logs/<app\_server\_name>/SystemErr.log

## If you contact software service

- They are going to ask you for the following information...
  - OS/400 – i5/OS VRM
    - V5R1 V5R2 V5R3
  - iSeries Access for Web VRM
    - V5R1 V5R2 V5R3
  - What 5722XH2 PTFs are installed?
    - DSPPTF 5722XH2
  - Type/version of web application server
    - ASF Tomcat
    - WebSphere Portal V5.0.2.2
    - WebSphere Portal V5.1.0.1
    - Workplace Services Express V2.5
    - WebSphere Application Server V6.0
    - WebSphere Application Server V5.1 Express
    - WebSphere Application Server V5.1 base
    - WebSphere Application Server V5.0 Express
    - WebSphere Application Server V5.0 base

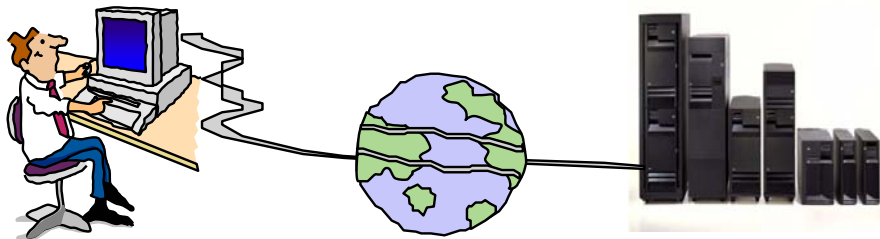


## If you contact software service

They are going to ask you for the following information...

- V5R1 OS/400 Group PTFs
  - Use the following commands to display the status of the following group PTFs:
  - DSPDTAARA QHTTPSVR/SF99156 (HTTP server)
  - DSPDTAARA QJAVA/SF99069 (Java)
  - DSPDTAARA QEJBAS51/SF99276 (WAS V5.1 base)
  - DSPDTAARA QASE51/SF99273 (WAS V5.1 Express)
  - DSPDTAARA QEJBAS5/SF99243 (WAS V5.0 base)
  - DSPDTAARA QIWE/SF99270 (WAS V5.0 Express)
  - DSPDTAARA QEJBADV4/SF99241 (WAS V4.0 Advanced)
  - DSPDTAARA QEJBAES4/SF99242 (WAS V4.0 Advanced Single)
- V5R2 and later OS/400 – i5/OS Group PTFs
  - Use the WRKPTFGRP command to display the status of all group PTFs.
- Log files
  - iSeries Access for Web log files - if they do not exist, it should be noted
    - /QIBM/UserData/Access/Web2 /logs/<all files>
    - /QIBM/UserData/Access/Web2/<app\_server\_type>/<instance\_name>/<app\_server>/logs/ <all files>
  - WebSphere log files - if they do not exist, it should be noted
    - activity.log
    - wsadmin.traceout
    - SystemErr.log
    - SystemOut.log

## iSeries Access for Web from the Internet and Security



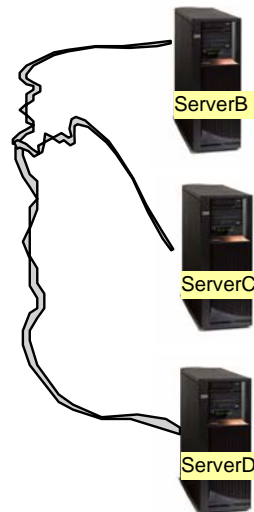
## The Question

- Would it be possible for my users to access their data from home over the internet? What would the setup/environment look like?
- How would security be enabled to protect the network?
- Could the web environment be isolated from the servers containing data?

Let's look at an example...

## Backend Servers

- The backend Servers B, C, D contain data.
- They are inside the company network.
- These servers do not have web serving software installed, let's assume they don't.
- I want some users to be able to always connect to Server B, some others to Server C, and some others to Server D



IBM eServer iSeries

Administrator sets up...

Web server A is added

This iSeries has:

- HTTP/HTTPS
- WebSphere
- iSeries Access for Web (installed and configured)

Servers B, C, and D...

- Must have 5722-XW1 iSeries Access Family installed
- 5722-XH2 iSeries Access for Web installed (RSTLICPGM) but not configured

© 2005 IBM Corporation

why "i"? it's simple.

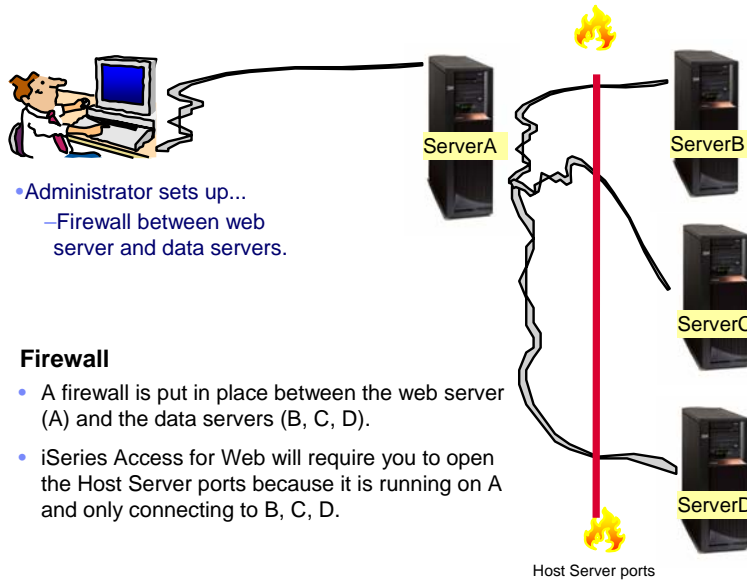
IBM eServer iSeries

## Setting up Server A

- Server A is added to the network.
- Server A has HTTP/HTTPS, WebSphere, iSeries Access for Web installed/configured.
  - Configure 3 HTTP servers -- one for Server B, one for Server C, and one for Server D
  - 3 WAS instances (one for each server)
  - Configures iSeries Access for Web in each instance (use TGTSVR parameter on CFGACCWEB2 command)
    - Adds "realm=server\_name.mydomain.com" to /QIBM/UserData/Access/Web2/<wasinst>/<appsvr>/config/webaccess.properties

© 2005 IBM Corporation

why "i"? it's simple.



## Notes: Firewalls (continued)

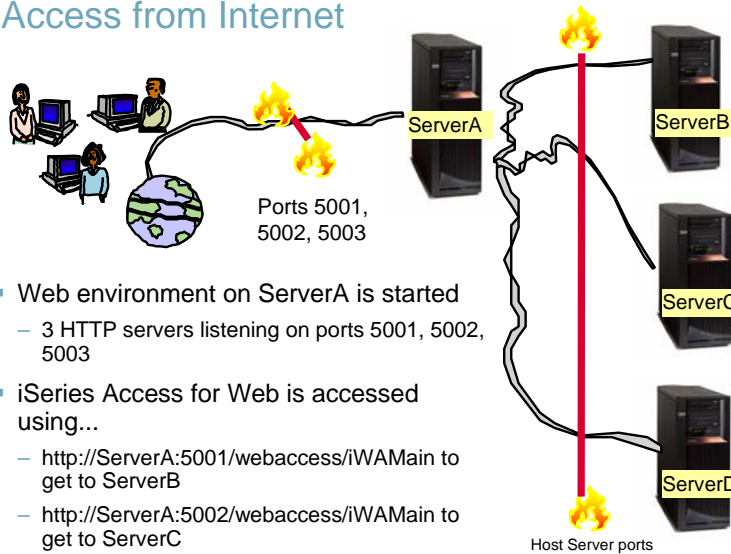
A firewall appears as a single address to the public. The firewall provides access to the untrusted network through proxy or SOCKS servers or network address translation (NAT) while hiding your internal network addresses. Consequently, the firewall maintains the privacy of your internal network. Keeping information about your network private is one way in which the firewall makes an impersonation attack (spoofing) less likely.

A firewall allows you to control traffic into and out of your network to minimize the risk of attack to your network. A firewall securely filters all traffic that enters your network so that only specific types of traffic for specific destinations can enter. This minimizes the risk that someone could use TELNET or file transfer protocol (FTP) to gain access to your internal systems.

### What a firewall cannot do to protect your network

While a firewall provides a tremendous amount of protection from certain kinds of attack, a firewall is only part of your total security solution. For instance, a firewall cannot necessarily protect data that you send over the Internet through applications such as SMTP mail, FTP, and TELNET. Unless you choose to encrypt this data, anyone on the Internet can access it as it travels to its destination.

## Access from Internet



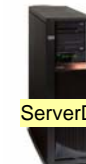
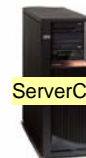
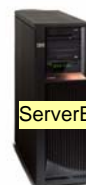
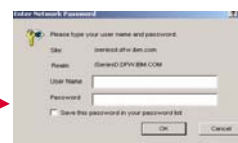
- Web environment on ServerA is started
  - 3 HTTP servers listening on ports 5001, 5002, 5003
- iSeries Access for Web is accessed using...
  - `http://ServerA:5001/webaccess/iWAMain` to get to ServerB
  - `http://ServerA:5002/webaccess/iWAMain` to get to ServerC
  - `http://ServerA:5003/webaccess/iWAMain` to get to ServerD

**Please note:**  
This is only one example of how to configure this environment.

## User starts browser and keys in url address...

- iSeries Access for Web user is providing different address to get to each iSeries...
  - `http://ServerA:5001/webaccess/iWAMain` to get to ServerB
  - `http://ServerA:5002/webaccess/iWAMain` to get to ServerC
  - `http://ServerA:5003/webaccess/iWAMain` to get to ServerD

The user must provide the correct iSeries user id and password for the backend data server to get access to the specific iSeries



## Access for Web - 5250 emulation

- Could be connected to iSeries B and start a new session from there to iSeries C or iSeries D
- Identify iSeries
- Determine what workstation (device) ID to use
- Connect to another iSeries

The screenshot shows the 'Start Session' configuration page. On the left is a navigation menu with options like 'My Home Page', 'Print', 'Messages', 'Jobs', '5250', 'Active sessions', 'Configured sessions', 'Start session', 'Database', 'Files', 'Command', 'Download', 'Customize', and 'Other'. Below the menu are 'Related Links' for 'iSeries Access for Web', 'iSeries Access', 'iSeries Navigator', 'WebSphere Host', 'Publisher', and 'iSeries Information'. The main content area is titled 'Start Session' and contains the following sections:

- Server:** Server: any iSeries in network, Port: 23, Code page: 37
- Workstation ID:**
  - Use user ID
  - Specify workstation ID (value: cminer)
  - Avoid duplicates for this user
  - Avoid duplicates with other users
- General:** Initial macro: (dropdown menu)

At the bottom, there are two buttons: 'Start Session' and a tooltip that reads: 'Shortcut to CheckMessages for \*PUBLIC' and 'Shortcut to SIGN\_ON for \*PUBLIC'.

## Or could connect to another iSeries through a preconfigured shortcut

The screenshot shows the 'Configured Sessions' page in a Microsoft Internet Explorer browser window. The address bar shows 'http://<server\_name>/webaccess/WAConfiguredSessions/'. The page title is 'iSeries Access for Web' and the sub-header is 'Configured Sessions'. The table below lists the configured sessions:

Session	Server	Action	Shortcut	Created By	Access
Dallas Demos	dallas.xyzcompany.com	<a href="#">Start</a> <a href="#">Copy</a> <a href="#">Delete</a> <a href="#">Rename</a> <a href="#">Create Shortcut</a> <a href="#">Edit</a>	No	dlb	dlb
Home server	home.xyzcompany.com	<a href="#">Start</a> <a href="#">Copy</a> <a href="#">Delete</a> <a href="#">Rename</a> <a href="#">Create Shortcut</a> <a href="#">Edit</a>	No	dlb	dlb
Japan server	japan.xyzcompany.com	<a href="#">Start</a> <a href="#">Copy</a> <a href="#">Delete</a> <a href="#">Rename</a> <a href="#">Create Shortcut</a> <a href="#">Edit</a>	No	dlb	dlb



## How can I get Access for Web to start automatically after my system IPL's each night?

I am using WAS V5 Express for iSeries

- You can use a CL command to start you application server instance.
  - But before making the call, you need to be sure to start the WAS Express subsystem first by running the command:
 

```
STRSBS QASE5/QASE5
```
  - To start your application server from the OS/400 command line, run this command:
 

```
SBMJOB CMD(CALL PGM(QASE5/QASESTRSVR) PARM('-instance'
'/QIBM/UserData/WEBASE/ASE5/instance')) JOB(instance) JOBD(QASE5/QASE5)
JOBQ(QASE5/QASE5) USER(QEJBSVR) LANGID(*USRPRF) CNTRYID(*USRPRF)
CCSID(*USRPRF)
```
  - where instance is the name of the application server instance that you want to start. You can only start one application server when you run this command. To start additional application servers, you must run the command separately for each application server that you want to start.
  - Note: To run this command, your user profile must have \*USE authority to the QEJBSVR user profile. Use the Edit Object Authority (EDTOBJAUT) command to add or verify that your user profile has this authority.

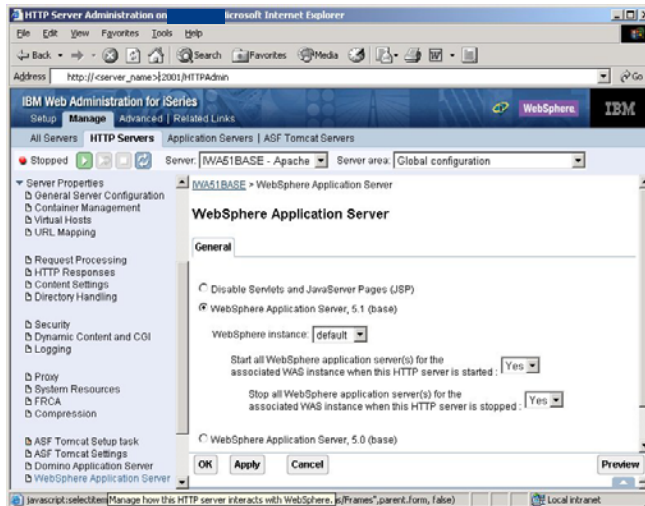
## How can I get Access for Web to start automatically after my system IPL's each night? (continued)

I am using WAS V5.1 "Base edition" for iSeries

- You can configure the HTTP server for your WAS instance to automatically start the WAS instance when it starts.
- Use the STRTCPSVR \*HTTP HTTPSVR(IWA51BASE) command to start the HTTP server as part of your IPL procedures and it will start your WAS application server.

## How can I get Access for Web to start automatically after my system IPL's each night? (continued)

STRTCPSVR \*HTTP HTTPSVR(IWA51BASE)



## How do I know who is connected through Access for Web?

- Look in Connection Pool Status

- My Folder
- My Home Page
- Print
- Messages
- Jobs
- 5250
- Database
- Files
- Command
- Download
- Customize
- Other
- Bookmarks
- Change password
- Connection pool status
- Trace
- About

### Connection Pool Status

#### Connection Summary

Setting	Value	Description
Active connections	0	Total number of active connections for all users.
Available connections	7	Total number of available connections for all users.
Total connections:	7	Total number of active and available connections for all users.
Total users:	3	Total number of users that have connected since iSeries Access for Web started.
Active users:	3	Total number of users that have active or available connections.

#### Connection Details

	System	User	Active	Available	Action
myiseries	:HLAND.IBM.COM	WARRENA	0	2	<a href="#">Clear</a>
myiseries	:HLAND.IBM.COM	GILBERTM	0	3	<a href="#">Clear</a>
myiseries	:HLAND.IBM.COM	CMINER	0	2	<a href="#">Clear</a>


## Setting some limits for Access for Web use...

- Connection Pool Settings
- Can get to this via:
  - Link on Connection Pool Status screen
  - Customize -> Settings

Setting	Value	Description
Cleanup interval	5 minutes	Specify how often to clean up connections.
Connections per user	No maximum	Specify the maximum number of concurrent connections allowed per user.
Maximum inactivity	1 hour	Specify the maximum time a connection can be inactive before it is cleaned up.
Maximum lifetime	24 hours	Specify the maximum time a connection can exist before it is cleaned up.
Maximum use count	500	Specify the maximum number of times a connection can be used before it is cleaned up.
Maximum use time	No maximum	Specify the maximum time a connection can be active before it is cleaned up.

Buttons: Save, Cancel, Apply, Shipped Defaults

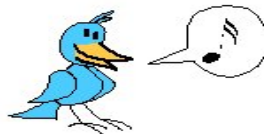
## If using WAS Network Deployment for iSeries

- For the WebSphere Application Server Network Deployment for iSeries environment
  - WebSphere v5.0/5.1 Base Edition must be installed
  - WebSphere v6.0 Base/Express Edition must be installed
  -  – iSeries Access for Web does not support WebSphere instances/profiles that are federated to the WebSphere Network Deployment environment

## Additional information

- The following resources are available
  - HTTP Server redbook
    - <http://www.redbooks.ibm.com/redpieces/pdfs/sg246716.pdf>
      - Section 6.3 Encrypting your data with SSL and TLS
      - Section 6.4 Proxy server: Protecting direct access
  - Information Center - Setting up a reverse proxy for HTTP server
    - [http://publib.boulder.ibm.com/series/v5r2/ic2924/index.htm?info/rzaie/rzaie\\_reverseproxy.htm](http://publib.boulder.ibm.com/series/v5r2/ic2924/index.htm?info/rzaie/rzaie_reverseproxy.htm)
- See Appendix A for additional information

## Appendix A. Additional Documentation



Enjoy the rest of  
your conference!

## Notes: iSeries Access for Web connection to backend server

In an environment where access to multiple iSeries servers is required, from a performance perspective, installing the full suite of software to enable iSeries Access for Web on each machine may not be desirable. Due to financial constraints, it may not be appropriate to install WebSphere Application Server on all iSeries servers.

The Redbook, iSeries Access for Web V5R2 and WebSphere Host Publisher V4.0 - Section 2.5 Connecting to multiple iSeries servers, describes how to modify the iSeries Access for Web configuration so that iSeries Access for Web can connect to other iSeries servers within the network.

The redbook is available at: <http://publib-b.boulder.ibm.com/Redbooks.nsf/9445fa5b416f6e32852569ae006bb65f/483aa6103bba479a85256b6e0057ec4b?OpenDocument>

or simply go to the iSeries Access for Web website at <http://www-1.ibm.com/servers/eserver/series/access/web/>

## Notes: HTTP/HTTPS - SSL

The Internet was designed to be an open system and it allows any computer on the network to see the messages passing through. To consider an information transaction secure, it has to have the following characteristics:

**Confidentiality**

Use encryption if you want to ensure that the contents of the message remain private as they pass through the network.

**Integrity**

Use encryption and digital signatures if you want to ensure integrity. Messages are not altered while being transmitted.

**Accountability**

Use digital signatures when both the sender and the receiver agree that the exchange took place to ensure accountability.

**Authenticity**

OS/400 SSL provides server authentication so you can authenticate with whom you are talking.

You can configure the iSeries server to use a security protocol, called Secure Sockets Layer (SSL), for data encryption and client/server authentication. A client establishes an SSL session by sending an HTTPS request to the server on the SSL port. If SSL client authentication is enabled on the server, a client certificate is requested for any HTTPS request. SSL uses a handshake protocol where the server authenticates and the client authenticates if enabled. When authenticated, they agree on the security keys to use for the session, and the algorithms to be used for encryption and message digests or hashes. When a session has been established, all data exchanged on that session is encrypted.

Below is a highlevel list of steps involved with enabling HTTPS. The steps may not address all issues relative to your environment. It is recommended that the iSeries information center and HTTP server documentation be referenced to enable HTTPS.

1. If you are new to SSL, HTTPS, or digital certificates, review the following information before configuring SSL.
  - Security concepts information in the iSeries Information Center (<http://www.ibm.com/eserver/series/infocenter>). Look for information under the topics Networking-->Networking Security.
  - Security and SSL information in the HTTP server documentation at <http://www.ibm.com/servers/eserver/series/software/http>
2. Configure your HTTP server instance to allow SSL connections. You must already have created an HTTP server that you want to enable to run SSL.
3. Configure digital certificates through the Digital Certificate Manager on the iSeries server.
4. Configure the web application server to use the SSL port. The SSL port must be listed within the WebSphere virtual host alias table.
5. Open a browser to one of the following URLs:
  - If using the default SSL port of 443:  
`https://<server_name>/webaccess/WAHome`
  - If using any other port number, replace the <port> with the port number configured with the HTTP server.  
`https://<server_name>:<port>/webaccess/WAHome`

## Notes: Firewalls

A firewall is a blockade between a secure internal network and an untrusted network such as the Internet. Most companies use a firewall to connect an internal network safely to the Internet, although you can use a firewall to secure one internal network from another also.

A firewall provides a controlled single point of contact (called a chokepoint) between your secure internal network and the untrusted network. The firewall:

- Lets users in your internal network use authorized resources that are located on the outside network.
- Prevents unauthorized users on the outside network from using resources on your internal network.

When you use a firewall as your gateway to the Internet (or other network), you reduce the risk to your internal network considerably. Using a firewall also makes administering network security easier because firewall functions carry out many of your security policy directives.

### How a firewall works

To understand how a firewall works, imagine that your network is a building to which you want to control access. Your building has a lobby as the only entry point. In this lobby, you have receptionists to welcome visitors, security guards to watch visitors, video cameras to record visitor actions, and badge readers to authenticate visitors who enter the building.

These measures may work well to control access to your building. But, if an unauthorized person succeeds in entering your building, you have no way to protect the building against this intruder's actions. If you monitor the intruder's movements, however, you have a chance to detect any suspicious activity from the intruder.

### Firewall components

A firewall is a collection of hardware and software that, when used together, prevent unauthorized access to a portion of a network. A firewall consists of the following components:

- Hardware. Firewall hardware usually consists of a separate computer or device dedicated to running the firewall software functions.
- Software. Firewall software provides a variety of applications. In terms of network security, a firewall provides these security controls through a variety of technologies:
  - Internet Protocol (IP) packet filtering
  - Network address translation (NAT) services
  - SOCKS server
  - Proxy servers for a variety of services such as HTTP, Telnet, FTP, and so forth
  - Mail relay services
  - Split Domain name services (DNS)

## Notes: Firewalls (continued)

- Logging
- Real-time monitoring

Note: Some firewalls provide virtual private networking (VPN) services so that you can set up encrypted sessions between your firewall and other compatible firewalls.

### Using firewall technologies

You can use the firewall proxy servers, SOCKS server, or NAT rules to provide internal users with safe access to services on the Internet. The proxy and SOCKS servers break TCP/IP connections at the firewall to hide internal network information from the untrusted network. The servers also provide additional logging capabilities.

You can use NAT to provide Internet users with easy access to a public server behind the firewall. The firewall still protects your network because NAT hides your internal IP addresses.

A firewall also can protect internal information by providing a DNS server for use by the firewall. In effect, you have two DNS servers: one that you use for data about the internal network, and one on the firewall for data about external networks and the firewall itself. This allows you to control outside access to information about your internal systems.

When you define your firewall strategy, you may think it is sufficient to prohibit everything that presents a risk for the organization and allow everything else. However, because computer criminals constantly create new attack methods, you must anticipate ways to prevent these attacks. As in the example of the building, you also need to monitor for signs that, somehow, someone has breached your defenses. Generally, it is much more damaging and costly to recover from a break-in than to prevent one.

In the case of a firewall, your best strategy is to permit only those applications that you have tested and have confidence in. If you follow this strategy, you must exhaustively define the list of services you must run on your firewall. You can characterize each service by the direction of the connection (from inside to outside, or outside to inside). You should also list users who you will authorize to use each service and the machines that can issue a connection for it.

### What a firewall can do to protect your network

You install a firewall between your network and your connection point to the Internet (or other untrusted network). The firewall then allows you to limit the points of entry into your network. A firewall provides a single point of contact (called a chokepoint) between your network and the Internet. Because you have a single point of contact, you have more control over which traffic to allow into and out of your network.

## iSeries & WebSphere Resources & Deliverables

**iSeries Information Center**  
<http://www.ibm.com/series/infocenter>

**iSeries site**  
[www.iseries.ibm.com/](http://www.iseries.ibm.com/)

**iSeries WebSphere Application Server**  
<http://www-1.ibm.com/servers/eserver/series/software/websphere/wsappserver/>

**PartnerWorld for Developers, iSeries & WebSphere**  
<http://www.iseries.ibm.com/developer/websphere/>

**IBM eServer Solutions**  
<http://www-1.ibm.com/servers/eserver/series/solutions/>

**iSeries e-business Solutions**  
<http://www-1.ibm.com/servers/eserver/series/ebusiness/>

**iSeries B2B Solutions**  
<http://www-1.ibm.com/servers/eserver/series/b2b/>

**Connect for iSeries**  
<http://www-1.ibm.com/servers/eserver/series/b2b/connect/v11high.html>

**WebSphere Commerce Suite for iSeries**  
<http://www-1.ibm.com/servers/eserver/series/ebusiness/wcs51.html>

**iSeries and e-commerce**  
<http://www-1.ibm.com/servers/eserver/series/ebusiness/ecommerce.htm>

**iSeries HTTP Server**  
<http://www-1.ibm.com/servers/eserver/series/software/http/index.html>

**WebSphere Development Studio for iSeries**  
<http://www-3.ibm.com/software/d/lds400/>

**iSeries and WebSphere References**  
<http://www.as400.ibm.com/developer/java/solutions/jjem.html>  
<http://www2.software.ibm.com/casestudies/swcswb.nsf/platform>

**iSeries Solution Finder**  
<http://www.iseries.ibm.com/btobpartner/>

**iSeries & Domino**  
<http://www-1.ibm.com/servers/eserver/series/domino/>

**Dedicated Server for Domino**  
<http://www-1.ibm.com/servers/eserver/series/domino/dsd.htm>

**Workload Estimator for iSeries, WAS, WCS & Domino, HTTP Server, Java, etc.**  
<http://as400service.ibm.com/estimator/>

**iSeries Custom Technology Center**  
<http://www-1.ibm.com/servers/eserver/series/service/ctc/>

**iSeries Technical Support**  
<http://as400service.ibm.com/>

**iSeries Technical Studio**  
<http://www.as400.ibm.com/tstudio/>

**1st Install for iSeries & WebSphere Application Server**  
<http://www.iseries.ibm.com/developer/websphere/assistance.html>

**iSeries ToolsNet (Tools & Middleware)**  
<http://www.iseries.ibm.com/developer/tools/>

**iSeries & Services Network**  
<http://as400service.ibm.com/supporthome.nsf/document/19251245>

**iSeries e-business Handbook (SG24-5694-01)**  
<http://www.redbooks.ibm.com/abstracts/sg245694.html>

## iSeries & WebSphere Resources & Deliverables

**WebSphere Commerce Suite With Back-End Order Mgmt.**  
<http://ibm.com/redbooks>

**iSeries Technology Center**  
<http://www.iseries.ibm.com/service/itc/ebiz.htm>

**iSeries University**  
<http://www-3.ibm.com/services/learning/community/as400/>

**WebSphere Application Server Overview**  
<http://www-4.ibm.com/software/webservers/appserv/>

**iSeries & WebSphere Documentation**

**Redbooks & Red Pieces**

Form Numbers/Web Sites  
 Building iSeries Applications for WebSphere Advanced Edition  
 SG24-5691  
 Building Java Applications for the iSeries with VisualAge for Java SG24-6245  
 Integrating WCS with Domino Back-End Applications  
<http://ibm.com/redbooks> (search for REDP0141)

**Java & WebSphere Performance on iSeries**  
<http://publib-b.boulder.ibm.com/Redbooks.nsf/RedpieceAbstracts/sg246256.html?Open>  
 iSeries Application Development Directions white paper is now available  
<http://www.iseries.ibm.com/developer/tools/documents/addir/index.html>  
 Connect for iSeries with WebSphere Commerce Suite Red Paper  
<http://www.redbooks.ibm.com/redpapers/pdfs/redp0127.pdf>

**Tools for Application Reface and Redesign**  
<http://www.as400.ibm.com/developer/comm/pidtechpapers.html?Tools>  
 Introduction to Enterprise JavaBeans for AS/400  
 SG24-5192-00  
 Web enabling AS/400 Applications with WebSphere Studio  
 SG24-5634-00  
 Building AS/400 Applications with WebSphere Standard Edition 2.0  
 SG24-5635-00  
 Building AS/400 C/S Apps with Java  
 SG24-2152-02  
 Building AS/400 Internet-based applications with Java  
 SG24-5337-00

**WebSphere Commerce Suite**  
[www-4.ibm.com/software/webservers/commerce/](http://www-4.ibm.com/software/webservers/commerce/)

**WebSphere Payment Manager**  
[www-4.ibm.com/software/webservers/paymgr/](http://www-4.ibm.com/software/webservers/paymgr/)

**MQSeries**  
[www.ibm.com/software/its/mqseries](http://www.ibm.com/software/its/mqseries)  
**IBM Redbooks**  
<http://www.redbooks.ibm.com/>

**iSeries Nation**  
<http://www-1.ibm.com/servers/eserver/series/announce/form.html>



## Trademarks and Disclaimers

© IBM Corporation 1994-2005. All rights reserved.

References in this document to IBM products or services do not imply that IBM intends to make them available in every country.

The following terms are trademarks of International Business Machines Corporation in the United States, other countries, or both:

AS/400	e-business on demand	i5/OS
AS/400e	IBM	OS/400
eServer	IBM (logo)	
	iSeries	

Rational is a trademark of International Business Machines Corporation and Rational Software Corporation in the United States, other countries, or both. Intel, Intel Inside (logos), MMX and Pentium are trademarks of Intel Corporation in the United States, other countries, or both.

Linux is a trademark of Linus Torvalds in the United States, other countries, or both.

Microsoft, Windows, Windows NT, and the Windows logo are trademarks of Microsoft Corporation in the United States, other countries, or both.

UNIX is a registered trademark of The Open Group in the United States and other countries.

SET and the SET Logo are trademarks owned by SET Secure Electronic Transaction LLC.

Java and all Java-based trademarks are trademarks of Sun Microsystems, Inc. in the United States, other countries, or both.

Other company, product or service names may be trademarks or service marks of others.

Information is provided "AS IS" without warranty of any kind.

All customer examples described are presented as illustrations of how those customers have used IBM products and the results they may have achieved. Actual environmental costs and performance characteristics may vary by customer.

Information concerning non-IBM products was obtained from a supplier of these products, published announcement material, or other publicly available sources and does not constitute an endorsement of such products by IBM. Sources for non-IBM list prices and performance numbers are taken from publicly available information, including vendor announcements and vendor worldwide homepages. IBM has not tested these products and cannot confirm the accuracy of performance, capability, or any other claims related to non-IBM products. Questions on the capability of non-IBM products should be addressed to the supplier of those products.

All statements regarding IBM future direction and intent are subject to change or withdrawal without notice, and represent goals and objectives only. Contact your local IBM office or IBM authorized reseller for the full text of the specific Statement of Direction.

Some information addresses anticipated future capabilities. Such information is not intended as a definitive statement of a commitment to specific levels of performance, function or delivery schedules with respect to any future products. Such commitments are only made in IBM product announcements. The information is presented here to communicate IBM's current investment and development activities as a good faith effort to help with our customers' future planning.

Performance is based on measurements and projections using standard IBM benchmarks in a controlled environment. The actual throughput or performance that any user will experience will vary depending upon considerations such as the amount of multiprogramming in the user's job stream, the I/O configuration, the storage configuration, and the workload processed. Therefore, no assurance can be given that an individual user will achieve throughput or performance improvements equivalent to the ratios stated here.

Photographs shown are of engineering prototypes. Changes may be incorporated in production models.