



IBM eServer iSeries

Session: **26MN - 420015**

Tips and Techniques for iSeries Access for Web

Schuman Shao
Smshao@us.ibm.com
IBM Rochester

© Copyright IBM Corporation, 2005. All Rights Reserved.
This publication may refer to products that are not currently available in your country. IBM makes no commitment to make available any products referred to herein.

why "i"? it's simple.

IBM eServer iSeries



iSeries Access for Web – Sessions in Orlando

1. 25MN - iSeries Access for Web: The Browser Alternative!
2. 26MN - Tips and Techniques for iSeries Access for Web
3. 31MN – iSeries Access for Web: Real World Usage **(NEW!)**
4. 32MN - iSeries Access for Web: Run 5250 in a Browser
5. 33MN - iSeries Access for Web: Setup and Configuration
6. 35LC - LAB: iSeries Access for Web: Installation and Configuration
7. 36LC - LAB: iSeries Access for Web: Installation and Configuration 
8. 41LC - OPEN LAB: iSeries Access for Web
9. 42LC - OPEN LAB: iSeries Access for Web
10. 45MN - iSeries Access for Web: Database Access
11. 46MN – Programming with iSeries Access for Web
12. 52MN - iSeries Access for Web: Control Access to your iSeries Resources
13. 53MN - iSeries Access for Web Runs in a Portal
14. 54MF - iSeries Access for Web: Printing Made Easy Through Your Browser

 Voted "Best Traditional Lab" at Spring 2005 COMMON

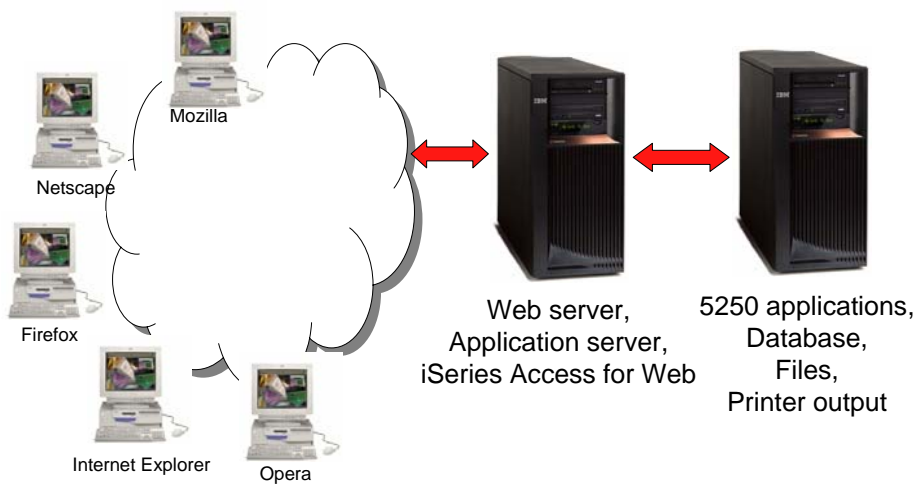
© 2005 IBM Corporation

why "i"? it's simple.

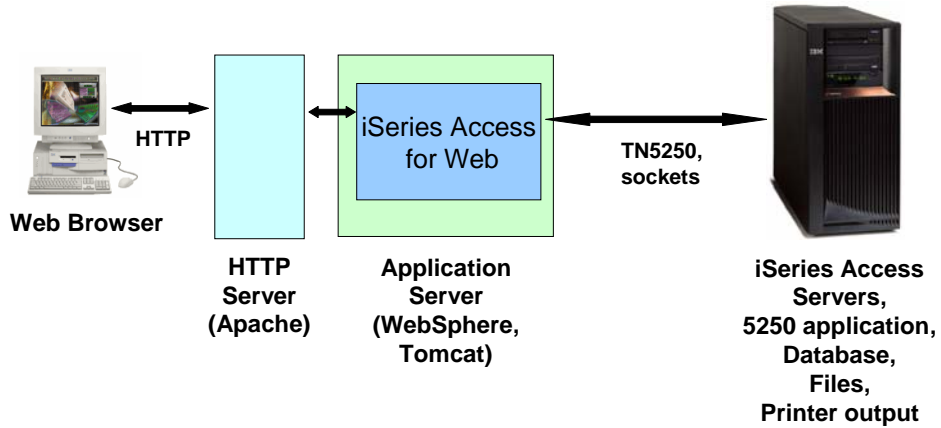
Overview

- iSeries Access for Web
 - Web browser access to i5/OS resources
 - 5250
 - File
 - Print
 - Database
 - Messages
 - Commands
 - And more...
 - Requires application server
 - WebSphere
 - Tomcat
 - Does not require client software other than a web browser

What is iSeries Access for Web



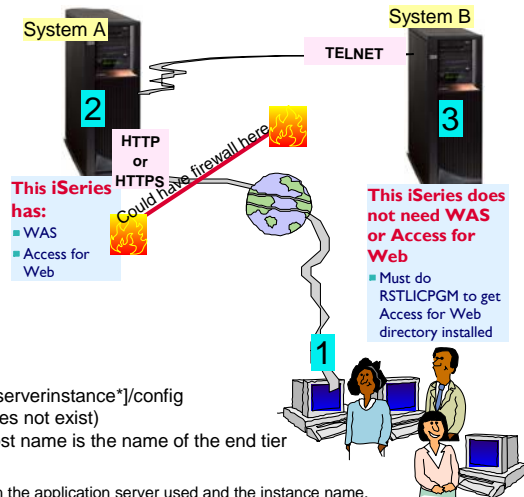
iSeries Access for Web Overview



Technique: iSeries Access for Web in a Three-Tier Environment

iSeries Access for Web can be configured as the middle tier in a three-tier environment

- iSeries Access for Web must be installed on the end-tier system
- iSeries Access for Web must be installed and configured in the middle tier system
- iSeries Access licenses must be available from the end-tier system
- Configure iSeries Access for Web to point to the end tier



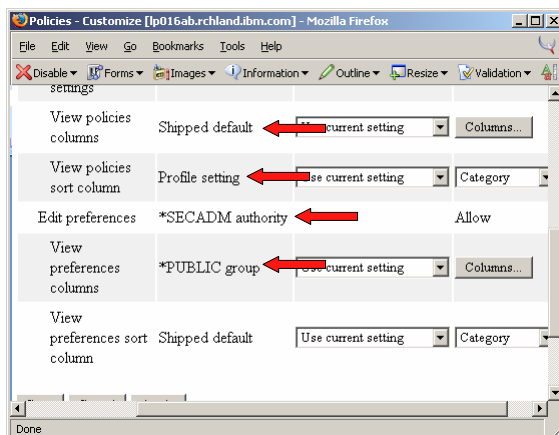
- go to /QIBM/UserData/Access/Web2/[appserverinstance*]/config
- edit webaccess.properties (create it if it does not exist)
- add the entry realm=[host name] where host name is the name of the end tier system

*Note: appserverinstance varies depending on the application server used and the instance name.

Tip: Manage User Access

- Customize policies for users and groups to
 - allow/deny functions users can access
 - limit the information users can see
- Use group profiles
 - manage policies for group profiles
 - add/remove users from groups
- Use *PUBLIC to set policies for all users
 - two strategies
 - allow all and deny specific users/groups
 - deny all and allow specific users/groups

Technique: Determining Policy Settings



Shipped default - policy is not set at any level, inherited from shipped default

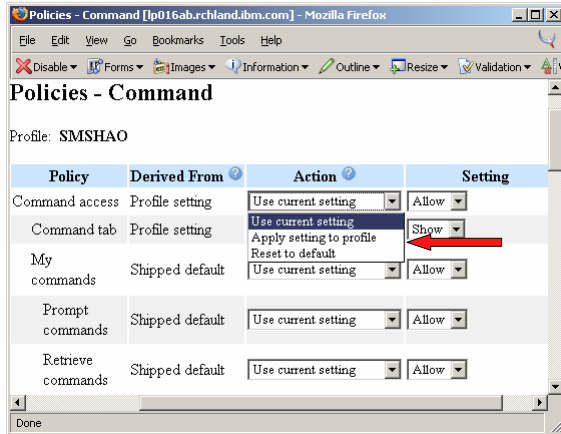
Profile setting - Policy set at profile level

*SECADM special authority - policy is not set at any level, granted due to special authority on user profile

*PUBLIC group - policy set at *PUBLIC

Policy inherited from group (not shown in this example)

Applying Customization Settings



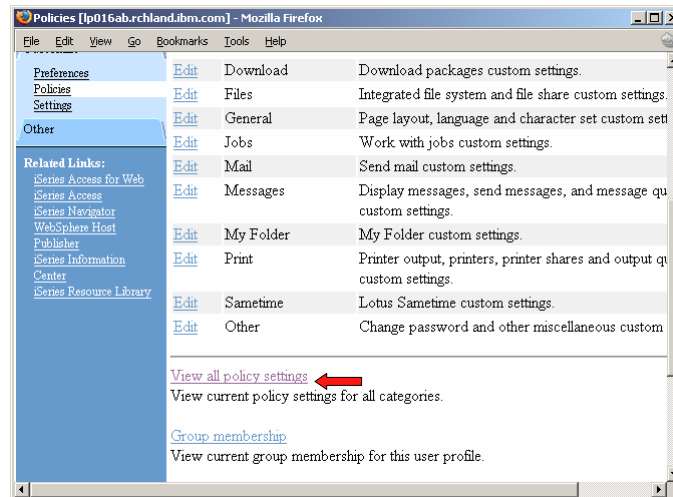
Use current setting - do not apply the value to current profile if setting is the same as inherited value.

Apply setting to profile - write the setting to current profile. Need to use this when value to set is the same as the inherited value.

Reset to default - only available when setting is derived from "Profile setting". Removes the setting from user profile.

Important: use "Reset to default" to remove a setting from profile and inherit value from group or *PUBLIC.

Tip: Determining Policy Settings



IBM eServer iSeries

Tip: Determining Policy Settings

Sort by "Derived From" to get a sorted list of policy values set at user or group level

Use printer friendly format to get a printable list of policy settings

Derived From	Policy	Parent Policy	Category	Action
Profile setting	5250 tab	5250 access	5250	Edit Sh
Profile setting	Prompt when starting non-configured sessions	Start non-configured sessions	5250	Edit Ye
Profile setting	Configured session to use for defaults	5250 access	5250	Edit Us
Profile setting	Command tab	Command access	Command	Edit Sh

© 2005 IBM Corporation

why "i"? it's simple.

IBM eServer iSeries

Tip: Simplify Printer Output

- Use Policies / Preferences to remove attribute columns
 - display only attributes that make sense for your users
- Use Policies to limit the view options

File Name	User Data	Date/Time	Pages	Per Copy	Copies	Status	Action
QZSRHTIPTR	QSRV015075	10/31/03 3:38 PM	2	1	Ready	Work with View View as View PDF	
QPDSPAJB		3/22/04 11:44 PM	5	1	Ready	Work with View View as View PDF	
QPJOBLOG	QPADEV0003	4/8/04 4:35 AM	1	1	Ready	Work with View View as View PDF	
QPJOBLOG	QPADEV0003	11/21/03	2	1	Hold	Work with	

© 2005 IBM Corporation

why "i"? it's simple.

Tip: Take Advantage of Printer Views

- Use customize preferences or policies to control the printer view
 - Basic
 - hides the iSeries printer concept
 - simplified actions to control printers
 - Advanced
 - traditional iSeries printer
 - advanced actions
 - starting/stop writer
 - hold/release output queues
 - vary on/off device

Printers - Basic View

Printer	Status	Action	Description	Output Queue
#JRHPDF1	Unavailable	Make Available Start	PDF Printer to test bidi enablement	QUSRSYS/#JRHPDF1
HEBTEST	Unavailable	Make Available Start	????	QUSRSYS/HEBTEST
IWAAFP	Unavailable	Make Available Start	Printer for Access for Web	QUSRSYS/IWAAFP
LPA	Unavailable	Make Available Start	Device created for LP016AB.	QUSRSYS/LPA
LPB	Unavailable	Make Available Start	Device created for LP016AB.	QUSRSYS/LPB
LUGPDF	Unavailable	Make Available Start	PDF printer	QUSRSYS/LUGPDF

Printers - Advanced View

Printer	Status	Action	Output Queue	Output Queue Status	Output Queue Action	Writer	Writer Status	Writer Action	Description
#IRHPDF1	Varied off	Vary on	QUSRSYS/#IRHPDF1	Released	Hold		Ended	Start	PDF Printer to test bidi enablement
HEBTEST	Varied off	Vary on	QUSRSYS/HEBTEST	Released	Hold		Ended	Start	????
IWAAFP	Varied off	Vary on	QUSRSYS/IWAAFP	Released	Hold		Ended	Start	Printer for Access for Web

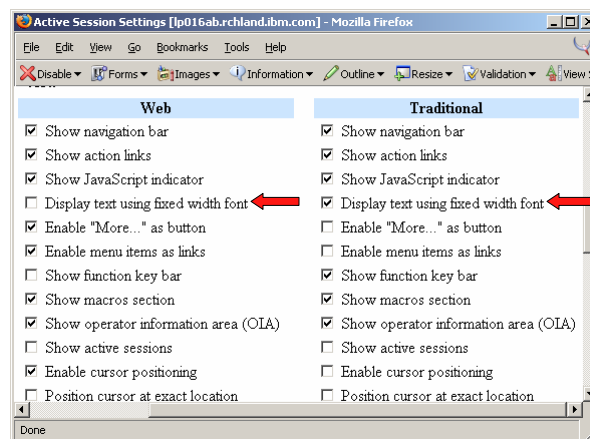
Tip: Convert AFP and SCS Output to PDF

- All printer output sent to PDF printers are converted to PDF
- Use iSeries Access for Web to create a PDF printer
- Send 5250 application output to PDF printers to generate PDF
- Use iSeries Access for Web to access generated PDF documents
 - Use PDF printer output to access your PDF printer output
 - Use PDF printers to access PDF printer output by printer

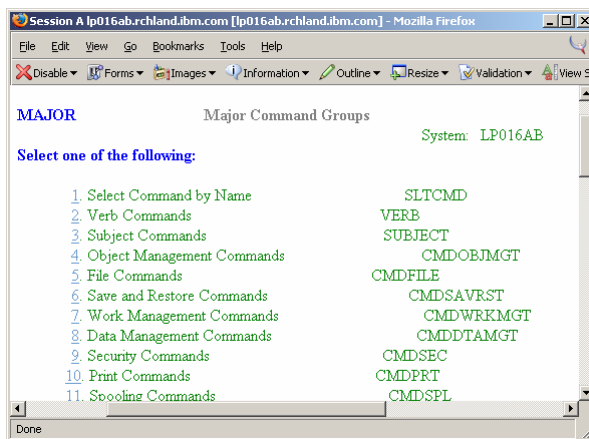
Tip: Use Fixed Width Font for 5250 Session

- Use fixed width font for screens that don't align correctly
 - Use the "Active session settings" link to change the setting
- Use web and traditional view to quickly switch settings

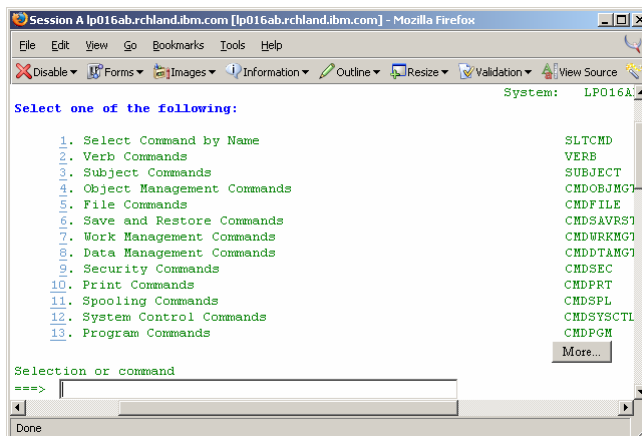
Setting Fixed Width Font



Example: 5250 - Proportional Width



Example: 5250 - Fixed Width

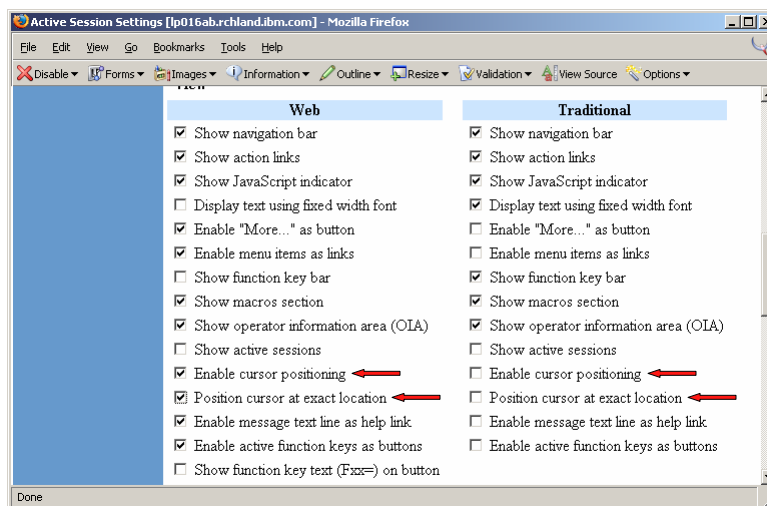


Tip: Position Cursor at Exact Location

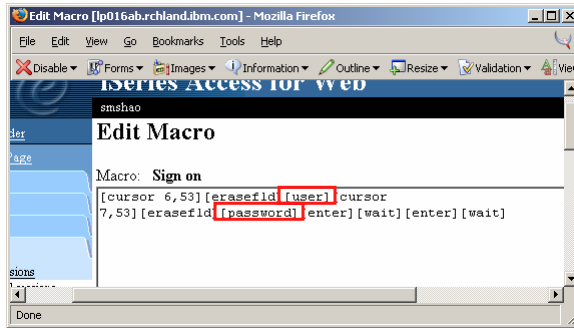
- Some 5250 application are cursor sensitive
 - Help
 - Prompting
- iSeries Access for Web 5250 interface allow positioning cursor by clicking on the field
 - Default behavior – place the cursor at the start of field
 - V5R3 added the ability to place the cursor at every location for those applications that differentiate cursor locations within a field

Tip: turning on position cursor at exact location results in larger HTML file. Turn this capability on and off as needed.

Technique: Turning On Exact Cursor Location



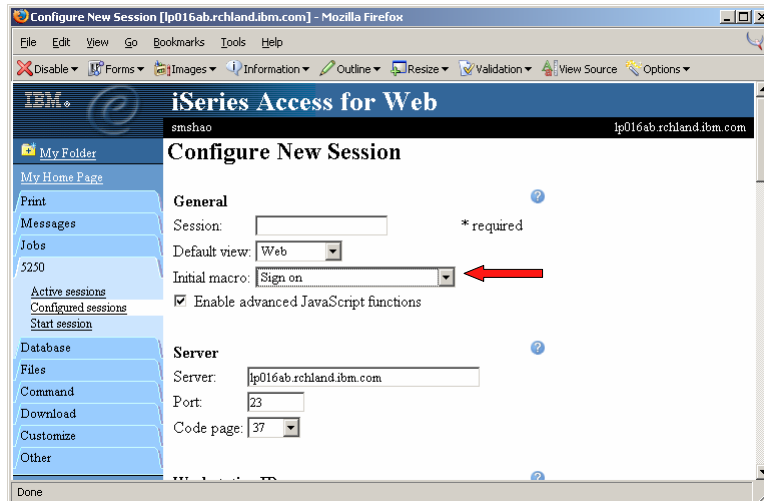
Technique: Replace User ID and Password



Use the keywords [user] and [password] in the macro to use the logged in user ID and password

Tip: single signon between iSeries Access for Web and 5250

Tip: Take Advantage of 5250 Initial Macro



Tip: Take Advantage of 5250 Shortcuts

- Shortcut is a pointer to the actual object
 - Configured session
 - Macro
- Shortcuts can be created for user or group
 - Share configuration with other users
- Owner of the object has read/write access
 - Edit/modify configured session, macro
- Owner of the shortcut has read access
 - Use session configuration, macro
 - Deleting a shortcut only deletes the shortcut, does not delete the actual object

Technique: Creating 5250 Session Shortcut

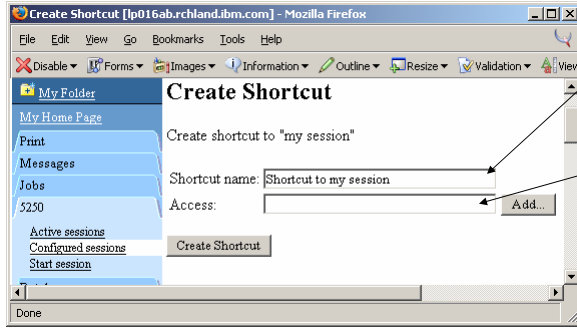
Session	Server	Action	Shortcut	Created By	Access
my session	lp016ab.rchland.ibm.com	Start Copy Delete Rename Create Shortcut Edit	No	smshao	smshao
Shortcut to my session	lp016ab.rchland.ibm.com	Start Copy Delete Rename	Yes	smshao	smshao
Shortcut to test shortcut macro	rchas1dd.rchland.ibm.com	Start Copy	Yes	javactl	*PUBLIC
Shortcut to test additional	lp016ab.rchland.ibm.com	Start Copy	Yes	warrena	*PUBLIC

Create a new shortcut

Owner may edit configuration

Shortcuts cannot be edited

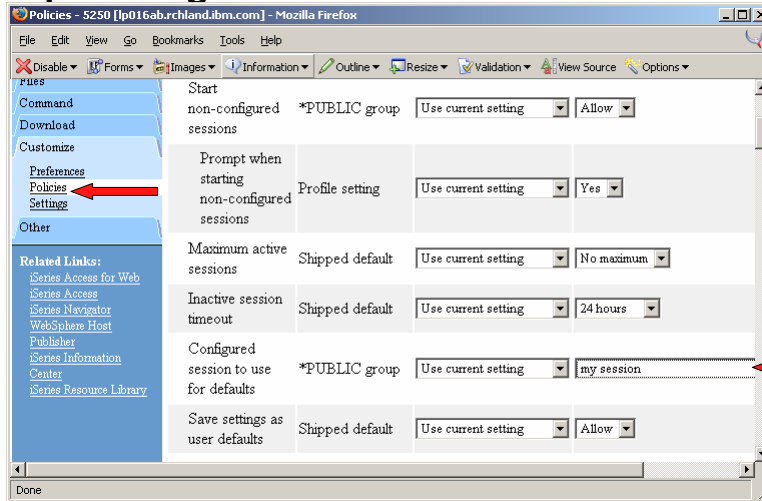
Technique: Creating 5250 Session Shortcut



Name the shortcut

Add the user or group
•Access is the user or group that would have access to the shortcut

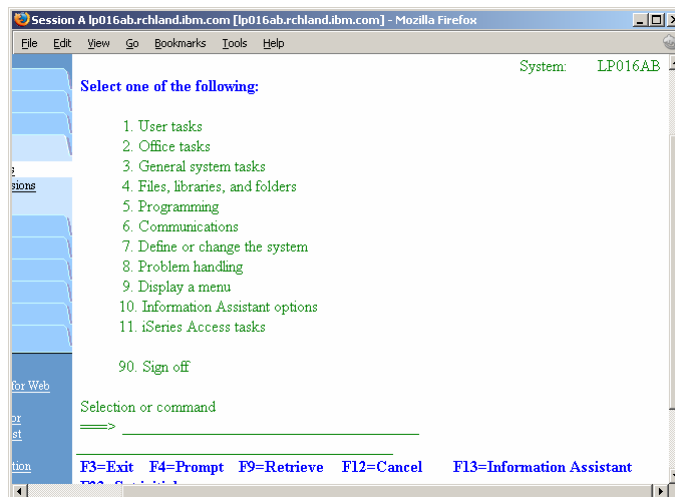
Tip: Configure Default 5250 Session



Tip: Share an Active 5250 Session

- Share an active session with other users or groups of users
- Shared session is read only
 - Others can only view the session
- Shared session is not refreshed automatically as screen content changes
 - Use browser refresh button to refresh the content
- Useful for showing someone the screen content
 - Ex. help desk

View-only Session



Tip & Technique: Integrating 5250 with Your Web Page

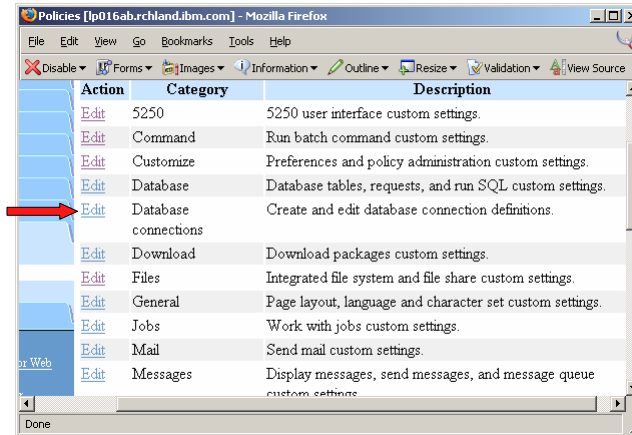
- Use the URL `http://[host]:[port]/webaccess/iWA5250`
 - Documented in the URL documentation on the web
 - Starts a new session if the user does not have an active session
 - Reconnects to the last accessed active session if the user has one or more active sessions
 - Use `initmac` parameter to execute a macro at session startup
 - If the parameter is present, and there is not an active session, a new session is started, and the macro is executed
 - Useful for taking a user directly into an application
 - ex: `http://myhost/webaccess/iWA5250?initmac=mymacro` will start a new 5250 session and execute the macro named `mymacro` if there is not an active session

Tip: Create Shortcuts to Saved Database Requests

- Shortcuts to a saved request to make the request available to another user or group of users
 - Shortcut is a reference to the actual request
 - Maintain ownership of the request
 - Changes to the request is automatically reflected to shortcut

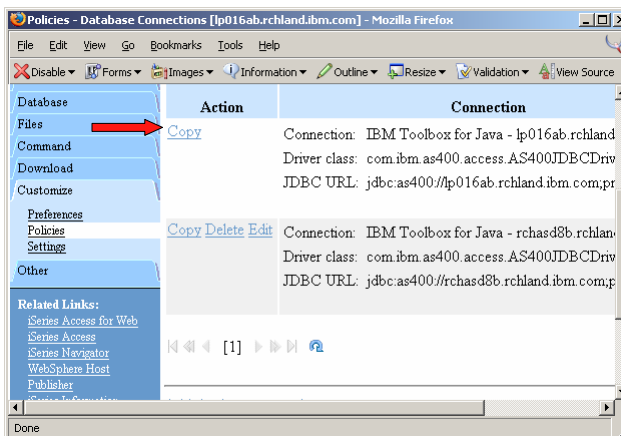
Tip: Access Database on Another iSeries

- Configure a new connection to access tables on another iSeries
- Use policies to add or edit connections
 - connections can be configured for a user, group of users, or *PUBLIC
 - default connection uses Toolbox JDBC driver
 - other JDBC drivers can be used for new connections



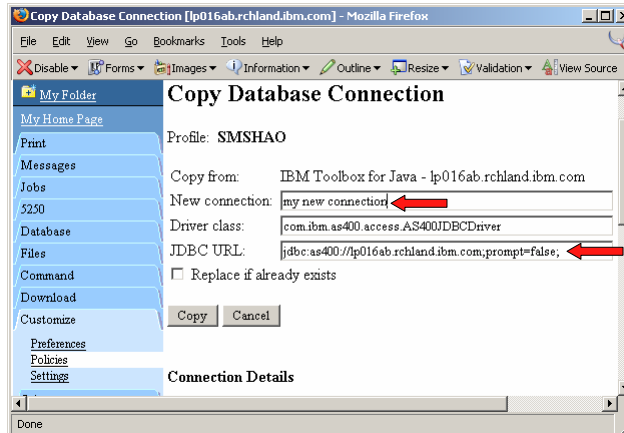
Technique: Configuring a Connection to Another iSeries

Copy the default connection



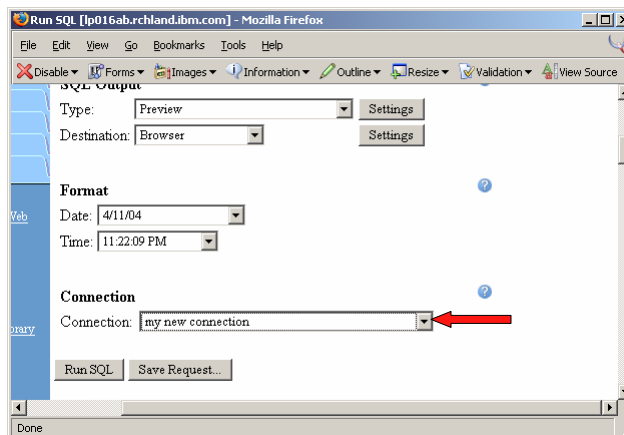
Technique: Configuring a Connection to Another iSeries

- Name the connection
- Modify the JDBC URL to point to the new iSeries



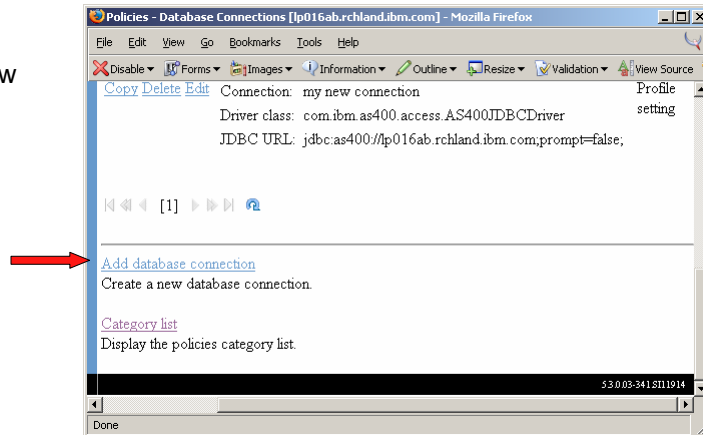
Technique: Configuring a Connection to Another iSeries

- Select the connection
 - Run SQL
 - Copy data to table



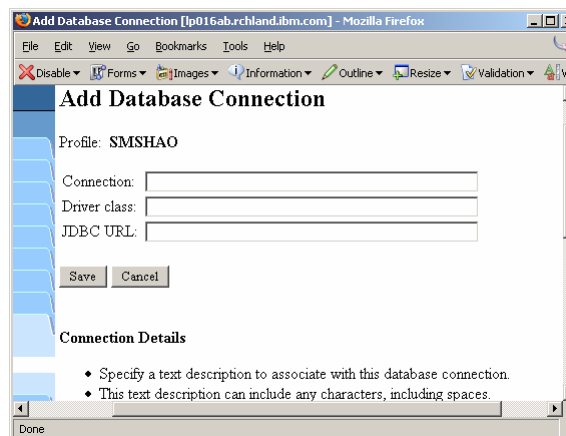
Tip: Using Another JDBC Driver

- Create a new connection



Technique: Using Another JDBC Driver

- Name the connection
- Provide the driver class name
 - Documented by the JDBC driver
 - fully qualified class name
 - case sensitive
 - e.g. com.ibm.....
- Provide the URL
 - documented by the JDBC driver
- Classes must be in the class path for the iSeries Access for Web instance



Using Another JDBC Driver

- Support
 - Unsupported except the native driver
- iSeries user ID and password are used for the JDBC connection

Tip: Scope of Database Connection

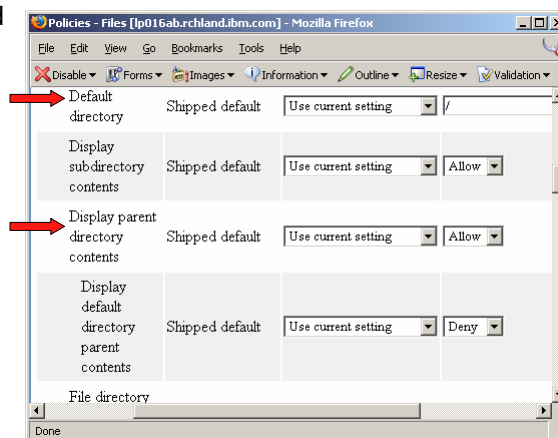
- Database connections can be configured for *PUBLIC, group or user profile
 - Create connection for user or group to hide connection from other users or groups
 - Create connection for *PUBLIC to give everyone access to a connection

Tip: Extract Server Data

- Use Extract Server Data to gather information on the server
 - User profile information,
 - Product information,
 - PTFs,
 - Directory entries,
 - And more...
- Information is extracted into a database table
- Use Run SQL to create queries against the extracted data

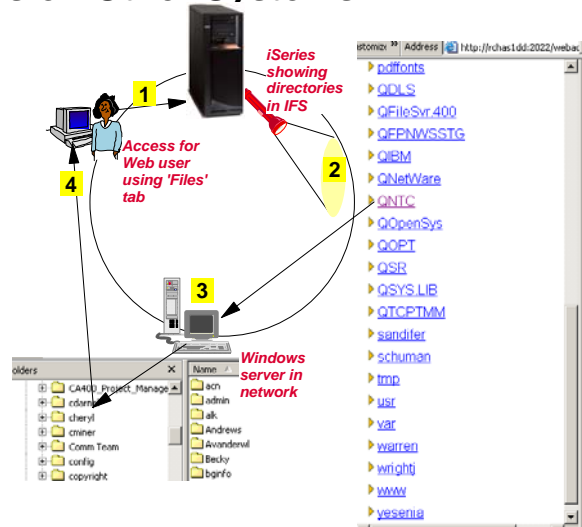
Tip: Restrict File Access

- Restrict access to Files and File Shares
 - Set default directory for user or group



Tip: Access Files on Other Systems

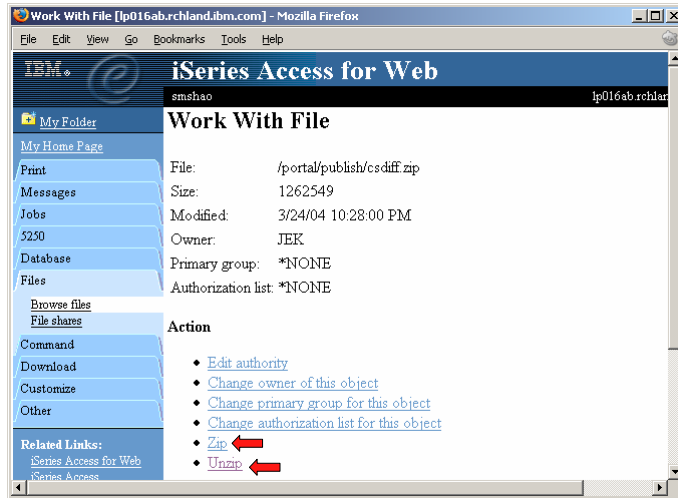
- File systems mounted in the IFS can be accessed
 - NFS
 - QNTC
- Use files to access files on other file systems



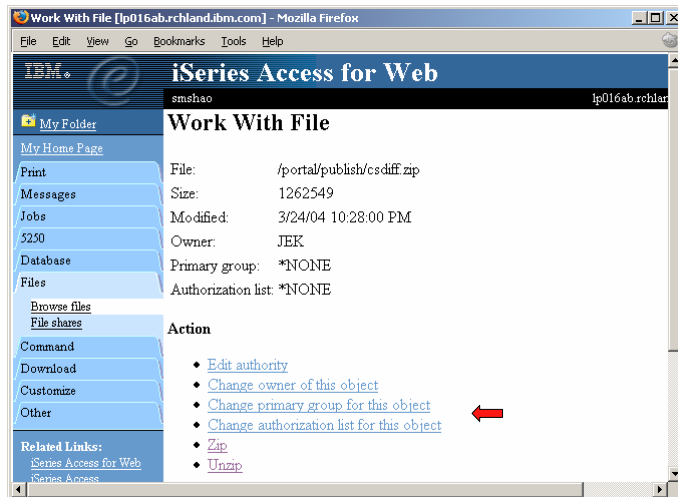
Tip: Zip and Unzip Files on the Server

- No need to download or map drives
- Zip up file or directory in IFS
- Unzip to IFS directory

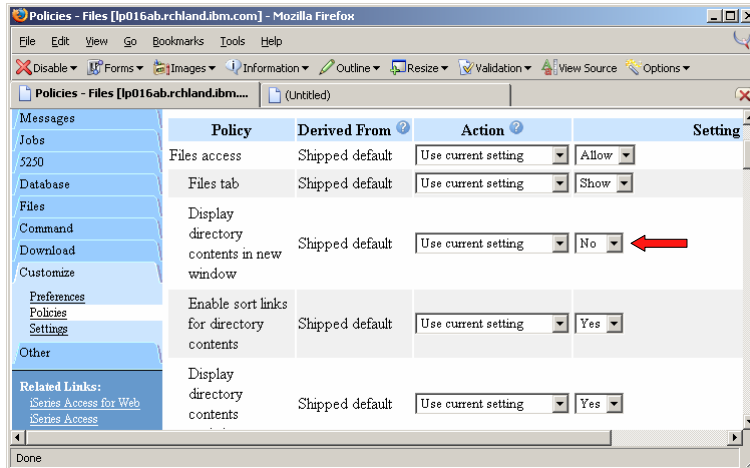
Zip and Unzip



Manage File Ownership and Authority



Tip: Display Directory Content in New Window



Tip: Taking Advantage of Commands

- Does not incur interactive cost
- Save frequently used commands
 - Use command prompting for saved commands to modify parameters
- Search for commands
 - wild card search
 - crt*, *prt, *dev*
 - Text search command description for commands
 - "work active job"

Tip: Mail and Personal Folder

- Allows asynchronous execution
 - database access
 - Commands
 - View PDF
- Use mail or personal folder when
 - task (query, command) takes a long time to execute
 - automatically send the result to other users
- Use personal folder when
 - user is an iSeries user
 - the resulting output is large
- Use email when
 - user is not an iSeries user

Tip: Setting Up Users for Mail

- Set SMTP mail server for *PUBLIC
 - All users use the same SMTP server
 - Can set SMTP server for specific user or group to override *PUBLIC setting

Tip: Folder Notification

- Set up for email notification
 - mail must be set up (SMTP server and email address)
 - set "Send e-mail on new folder items" to "yes"
 - notification email address does not have to be the same as mail settings
 - defaults to email address in the mail setting
 - override with email address of cell phone, or pager

Tip: Use Sametime for Notification and Broadcast

- Configure for Sametime server information and associate Sametime user with iSeries user profile
- Sametime can be used for
 - Notification (like email)
 - Broadcast message (like break message)

Tip: Navigating the Pages

- Most iSeries Access for Web pages are bookmarkable
- Use bookmarks/favorites to access frequently access functions directly
- Feel free to use the the browser "Back" button
 - except 5250 session
- Use browser history list to go back to a previous page

Tip: Application Integration

- URL syntax documented at
<http://www.ibm.com/servers/eserver/series/access/web/>
- Use URLs to integrate with other web applications
- Bookmarked URLs may be used
 - undocumented URL syntax may change in the future

Tip: Export Navigation as Bookmarks

- Export iSeries Access for Web navigation as bookmarks
 - Bookmarks can be imported by:
 - Internet Explorer
 - Netscape Navigator
 - Mozilla
 - Opera...

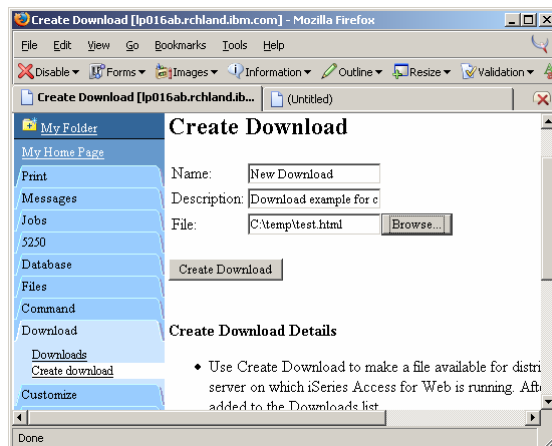
Exporting Bookmarks



Tip: Use Download for File Distribution

- Method to distribute files to users
 - Manage access by OS/400 users and groups
 - Users only see files they are authorized to
- iSeries Access for Linux is configured for download by default
 - Visible to profiles with SECADM only
 - Need to configure access to all other users

Download: Create Download



- Enter the
- Name of the download
 - Description (optional)
 - Path to the file
 - Use "Browse..." button to select file from your local workstation

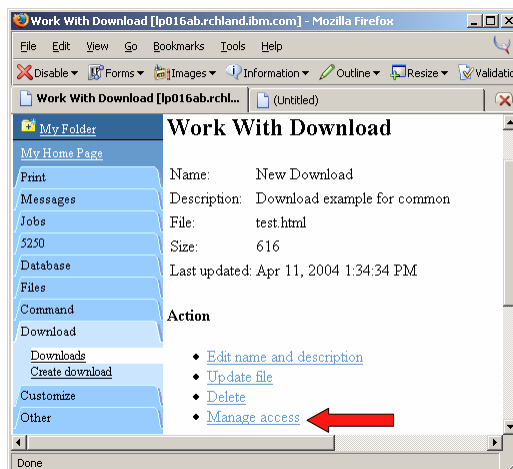
Download: Default Download Permissions

- Downloads are created with
 - Owner allowed to manage and access
 - Profiles with SECADM special authority allowed to manage and access
 - Public is denied access and manage

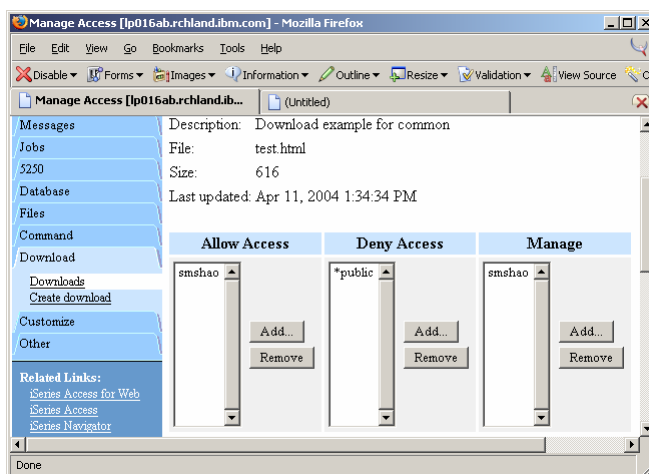
Download: Work With Download

Name	Description	File	Size	Action
iSeries	iSeries Access for Linux contains a full 5250 Access for emulator and an enhanced ODBC driver. For more information see: http://www.ibm.com/eserver/series/access/linux/	iSeriesAccess-5.2.0-1.3.i386.rpm	0	Download Work with
New	Download example for common	test.html	616	Download Work with
Windows	The AFP Viewer plug-in lets you view AFP documents from a Web browser.	gnsp32dm.exe	6,459,708	Download Work with

Download: Work With Download



Download: Manage Access



- Allow Access
 - Users and groups that are granted access to download
- Deny Access
 - Users and groups that are denied access to download
- Manage
 - Users and groups that are allowed to manage this download

New in Beta – Look and Feel

- New default template
- Style sheet support
 - Customize template to include your own style sheet to control the look and feel of the content area

New in Beta - Security

- Single sign-on
 - Option to use WebSphere application server authentication
 - Allows single sign-on with other web applications
 - Uses EIM/LDAP/Identity Token support to map from WebSphere identity to backend i5/OS identity

New in Beta - 5250

- By-pass sign-on
- HTML keyword support
 - Display HTML content from 5250 application
- Hotspots
 - Turn strings that begin with “http:” and “https:” into links
 - Integrate 5250 applications with web content

New in Beta - Database

- Open Office
 - Output database query result as Open Office OpenDocument spread sheet
- Data source support
 - Use WebSphere data source for database queries
- Store query result in Integrated File System
- Import query
 - Query for iSeries
 - DB2 UDB for iSeries Query Manager
- Find record
 - Find a record in table
 - Accessed from table list



New in Beta - Configuration


- Transfer configuration
 - Move or copy configuration
 - 5250 session configuration
 - 5250 macros
 - Saved commands
 - Database requests
 - Folder items
 - Policies



Trademarks and Disclaimers

© IBM Corporation 1994-2005. All rights reserved.
References in this document to IBM products or services do not imply that IBM intends to make them available in every country.

The following terms are trademarks of International Business Machines Corporation in the United States, other countries, or both:

AS/400	e-business on demand	i5/OS
AS/400e	IBM	OS/400
eServer	IBM (logo)	
	iSeries	

Rational is a trademark of International Business Machines Corporation and Rational Software Corporation in the United States, other countries, or both.
Intel, Intel Inside (logos), MMX and Pentium are trademarks of Intel Corporation in the United States, other countries, or both.
Linux is a trademark of Linus Torvalds in the United States, other countries, or both.
Microsoft, Windows, Windows NT, and the Windows logo are trademarks of Microsoft Corporation in the United States, other countries, or both.
UNIX is a registered trademark of The Open Group in the United States and other countries.
SET and the SET Logo are trademarks owned by SET Secure Electronic Transaction LLC.
Java and all Java-based trademarks are trademarks of Sun Microsystems, Inc. in the United States, other countries, or both.
Other company, product or service names may be trademarks or service marks of others.

Information is provided "AS IS" without warranty of any kind.

All customer examples described are presented as illustrations of how those customers have used IBM products and the results they may have achieved. Actual environmental costs and performance characteristics may vary by customer.

Information concerning non-IBM products was obtained from a supplier of these products, published announcement material, or other publicly available sources and does not constitute an endorsement of such products by IBM. Sources for non-IBM list prices and performance numbers are taken from publicly available information, including vendor announcements and vendor worldwide homepages. IBM has not tested these products and cannot confirm the accuracy of performance, capability, or any other claims related to non-IBM products. Questions on the capability of non-IBM products should be addressed to the supplier of those products.

All statements regarding IBM future direction and intent are subject to change or withdrawal without notice, and represent goals and objectives only. Contact your local IBM office or IBM authorized reseller for the full text of the specific Statement of Direction.

Some information addresses anticipated future capabilities. Such information is not intended as a definitive statement of a commitment to specific levels of performance, function or delivery schedules with respect to any future products. Such commitments are only made in IBM product announcements. The information is presented here to communicate IBM's current investment and development activities as a good faith effort to help with our customers' future planning.

Performance is based on measurements and projections using standard IBM benchmarks in a controlled environment. The actual throughput or performance that any user will experience will vary depending upon considerations such as the amount of multiprogramming in the user's job stream, the I/O configuration, the storage configuration, and the workload processed. Therefore, no assurance can be given that an individual user will achieve throughput or performance improvements equivalent to the ratios stated here.

Photographs shown are of engineering prototypes. Changes may be incorporated in production models.