



IBM System i™

Session: 25MC - 440281

Access for Web: Run 5250 in a Browser

Schuman Shao
smshao@us.ibm.com
IBM Rochester



*i want stress-free IT.
i want control.
i want an i.*

© Copyright IBM Corporation, 2006. All Rights Reserved.
This publication may refer to products that are not currently available in your country. IBM makes no commitment to make available any products referred to herein.

IBM System i



iSeries Access for Web sessions/labs

- 21MC - Get to the Web Fast with iSeries Access for Web
- 23MC - iSeries Access for Web: Setup and Configuration
- 25MC - iSeries Access for Web: Run 5250 in a Browser
-  26LB - LAB: Series Access for Web: Installation and Configuration
- 36MC - Build a Home Page to Your i5/OS Using iSeries Access
- 41MC - Tips & Techniques for iSeries Access for Web
- 44LB - LAB: iSeries Access for Web
- 45MC - iSeries Access for Web: Database Access
- 51MM - iSeries Access for Web: Security Considerations
- 53MM - iSeries Access for Web Runs in a Portal
- 55ML - Programming with iSeries Access for Web
-  55LB - LAB: Series Access for Web: Installation and Configuration

 Voted "Best Traditional Lab" at Spring and Fall 2005 COMMON

Functional enhancements can be submitted via the FITS system. The url is:
<http://www.ibm.com/eserver/iseries/access/>
And click on link "[Request for Design Change](#)"

i want an i.

© 2006 IBM Corporation

Try out Access for Web for yourself!

Start your browser and connect to the following web site:

<http://iseriesd.dfw.ibm.com/webaccess/iWAHome> (case sensitive)

User ID = WUSER Password = DEMO2PWD	This shows the basic look of Access for Web as we ship it. You can try various functions -- including working with printer output, creating database requests, etc. Click on the 5250 tab, sign onto the iSeries, then start an RPG application called BOATS and run it.
User ID = BOATADMIN Password = DEMO2PWD	This is an example of how a customer might design a web page for their use. You will see that an end user could start the same BOATS application by clicking on the 5250 session -- or they could have used WebFacing to run the application. You will also see other links that would let a user work with spoolfile information, work with IFS, run database requests, etc..

iSeries Access for Windows sessions:

- 32MC - iSeries Access for Windows: What's New in V5R4
- 33MI - iSeries Access Data Transfer: Tips & Techniques
- 42MK - Performance Tune iSeries Access ODBC
- 43MC - PC5250 Emulation: Everything You Need To Know
- 46ME - iSeries Access in the .NET World

iSeries Access for Linux session:

- 53ML – Creating the iSeries Linux Desktop

Stop in EXPO for a demo...

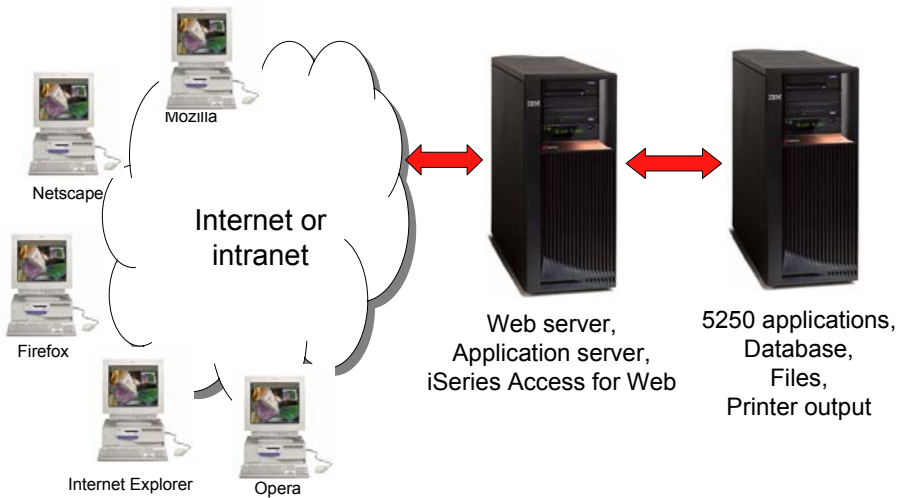
Functional enhancements can be submitted via the FITS system.

The url is:

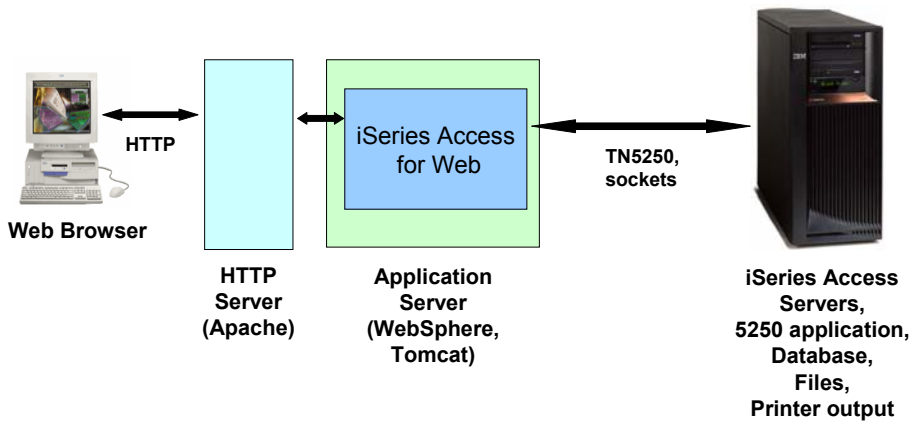
<http://www.ibm.com/eserver/iseries/access/>

And click on link "[Request for Design Change](#)"

What is iSeries Access for Web



iSeries Access for Web Overview



iSeries Access for Web 5250 Interface

- Servlet based - no client code other than the browser
 - WebSphere or Tomcat
- HTML pages rendered by the web browser

Starting a New Session

- Start a session dynamically
- Start a session using a stored configuration

Start a Session Dynamically

- Specify the system to connect
- Select the session attributes
 - Port, code page, workstation ID, etc.
- Start session

My Home Page

- My Folder
- Print
- Messages
- Jobs
- 5250
 - Active sessions
 - Configured sessions
 - Start session
- Database
- Files
- Command
- Download
- Customize
- Other

Related Links:

- Series Access for Web
- Series Access

Start Session

Server

Server:

Port:

Code page:

Workstation ID

Use user ID

Specify workstation ID

Avoid duplicates for this user

Avoid duplicates with other users

General

Initial macro:

Bypass signon

Display HTML data in fields

Start Session

Starting a Configured Session

- Configured sessions list shows the list of sessions for the logged in user
- Select the “Start” icon for the session to start

My Home Page

- My Folder
- Print
- Messages
- Jobs
- 5250
 - Active sessions
 - Configured sessions
 - Start session
- Database
- Files
- Command
- Download
- Customize
- Other

Configured Sessions

Session	Server	Action	Shortcut	Created By	Access
system A	LP016AB.RCHLAND.IBM.COM		No	smshao	smshao
system B	LP016AB.RCHLAND.IBM.COM		No	smshao	smshao

[Configure new session](#)
Configure a new session.

[Shortcuts to sessions you configured](#)
Display a list of shortcuts to sessions you configured. Shortcuts can be deleted from this list.

[Active sessions](#)
Work with your active sessions.

[Start session](#)
Start a new session.

[My macros](#)
Work with your macros.

[My keypads](#)
Work with your keypads.

Active Session

- An active session is a session that has been started
 - Dynamically or configured session
- A user may have more than one active sessions

Active Session - Web View

My Home Page

My Folder

Print

Messages

Jobs

S250

Active sessions

Configured sessions

Start session

Database

Files

Command

Download

Customize

Other

MAIN

IS/OS Main Menu

System: LP016AB

Select one of the following:

1. User tasks
2. Office tasks
3. General system tasks
4. Files, libraries, and folders
5. Programming
6. Communications
7. Define or change the system
8. Problem handling
9. Display a menu
10. Information Assistant options
11. iSeries Access tasks

20. Sign off

Selection or command

====>

Exit Prompt Retrieve Cancel Information Assistant

Set initial menu

(C) COPYRIGHT IBM CORP. 1980, 2005.

37 20,7

Attention Refresh Screen Field Exit Page Up Enter

System Request Stop Session Reset Page Down

Macros

Macro:

Traditional view

Switch this session to traditional view.

Switch to traditional view by selecting the "Traditional view" link

Active Session - Traditional View

My Home Page
My Folder
Print
Messages
Jobs
3250
Active sessions
Configured sessions
Start session
Database
Files
Command
Download
Customize
Other

Related Links:
iSeries Access for Web
iSeries Access
iSeries Navigator
iSeries Information Center
iSeries Resource Library

Web view
Switch this session to web view.

Switch to web view by selecting the "Web view" link

Web View vs. Traditional View

- Web View
 - Proportional font
 - Menu displayed as links
 - Active function keys displayed as buttons
 - Allows cursor positioning at non-input fields
 - Display "More..." as button
 - Message line (25th line) treated as help
- Traditional View
 - Fixed width font
 - Function key bar (F1-F24)
 - Background color configurable (default is black)

All the view settings are configurable. Configure web and traditional view settings for your environment.

Cursor Positioning

- Problem
 - Many 5250 applications rely on cursor location for context sensitive help and prompting
 - Web pages does not have a “text cursor” except in input fields
- Solution
 - All non input fields are turned into links
 - Clicking on the link places the cursor at that location
 - Two settings for cursor positioning
 - Place cursor at the beginning of the field
 - Smaller HTML content
 - May not work for applications that require exact cursor location
 - Place cursor at the exact location
 - Larger HTML content

Cursor Positioning

View	Web	Traditional
	<input checked="" type="checkbox"/> Show navigation bar	<input checked="" type="checkbox"/> Show navigation bar
	<input checked="" type="checkbox"/> Show action links	<input checked="" type="checkbox"/> Show action links
	<input type="checkbox"/> Show hotspot links	<input type="checkbox"/> Show hotspot links
	<input checked="" type="checkbox"/> Show JavaScript indicator	<input checked="" type="checkbox"/> Show JavaScript indicator
	<input type="checkbox"/> Display text using fixed width font	<input checked="" type="checkbox"/> Display text using fixed width font
	<input checked="" type="checkbox"/> Enable "More..." as button	<input type="checkbox"/> Enable "More..." as button
	<input checked="" type="checkbox"/> Enable menu items as links	<input type="checkbox"/> Enable menu items as links
	<input type="checkbox"/> Show function key bar	<input checked="" type="checkbox"/> Show function key bar
	<input checked="" type="checkbox"/> Show macros section	<input checked="" type="checkbox"/> Show macros section
	<input checked="" type="checkbox"/> Show operator information area (OIA)	<input checked="" type="checkbox"/> Show operator information area (OIA)
	<input type="checkbox"/> Show active sessions	<input type="checkbox"/> Show active sessions
	<input checked="" type="checkbox"/> Enable cursor positioning	<input type="checkbox"/> Enable cursor positioning
	<input type="checkbox"/> Position cursor at exact location	<input type="checkbox"/> Position cursor at exact location
	<input checked="" type="checkbox"/> Enable message text line as help link	<input type="checkbox"/> Enable message text line as help link
	<input checked="" type="checkbox"/> Enable active function keys as buttons	<input type="checkbox"/> Enable active function keys as buttons
	<input type="checkbox"/> Show function key text (Fxx=) on button	

Changing Active Session Settings

Command

Download

Customize

Other

RELEASE: V05R04M00
DRIVER: 4501130

USE OF THIS SYSTEM IS FOR IBM MANAGEMENT APPROVED PURPOSES ONLY.
USE IS SUBJECT TO AUDIT AT ANY TIME BY IBM MANAGEMENT.

(C) COPYRIGHT IBM CORP. 1980, 2005.

Related Links:

- iSeries Access for Web
- iSeries Access
- iSeries Navigator
- iSeries Information Center
- iSeries Resource Library

37	Attention	Refresh Screen	Field Exit	Page Up	6,53	Enter
	System Request	Stop Session	Reset	Page Down		

Macros

Macro:

[Traditional view](#)

Switch this session to traditional view.

[Active session settings](#)

Change the settings for this session.

Active Session Settings

- Changing active session settings does not affect the configured session settings
 - The changes are tied to the running instance of the session
 - Changes only affect how this particular active session behaves
- Some settings are not modifiable
 - Server name
 - Port
 - Code page
 - Workstation ID
 - Default view (web or traditional)
 - Initial macro

Active Session Life Span

- Session resides on the server, not the workstation
- Session remains active until
 - User ends (stops) the session, or
 - Session time out due to inactivity
 - Time out value is configurable through Access for Web
- Closing the browser or turning off the workstation does not end the session
- Taking advantage of active session behavior
 - Leave the session and browse on the web, or
 - Leave your workstation and go to another workstation and
 - Reconnect to your session

Reconnecting to an Active Session

My Home Page

- My Folder
- Print
- Messages
- Jobs
- 5250
 - Active sessions
 - Configured sessions
 - Start session
- Database
- Files
- Command
- Download
- Customize
- Other

Related Links:

- iSeries Access for Web

Active Sessions

Server	Session	Started	Last Accessed	View	Action ?
LP016AB.RCHLAND.IBM.COM	A	3/7/06 3:55:13 PM CST	3/8/06 10:44:29 AM CST	Web	

[View-only sessions](#)
Display a list of active sessions others are sharing with me.

[Shared sessions](#)
Display a list of active sessions I am sharing with others.

[Configured sessions](#)
Work with your configured sessions.

[Start session](#)
Start a new session.

[My macros](#)
Work with your macros.

[My keypads](#)
Work with your keypads.

[5250 user interface help](#)
View help for working with active sessions.

↑
Reconnect

Ending a Session

- Properly clean up TN5250 connection
 - Frees up resources in application server (Access for Web)
 - Frees up resources on target server (TN5250)
- Two ways to end a session
 - From an active session
 - From active session list

Ending a Session from Active Session

The screenshot shows the IBM System i Sign On interface. On the left is a navigation menu with items like 'My Home Page', 'My Folder', 'Print', 'Messages', 'Jobs', '5250', 'Active sessions', 'Configured sessions', 'Start session', 'Database', 'Files', 'Command', 'Download', 'Customize', and 'Other'. The main area contains a 'Sign On' form with fields for 'User', 'Password', 'Program/procedure', 'Menu', and 'Current library'. To the right, system information is displayed: 'System : LP016AB', 'Subsystem : QINTER', and 'Display : QPADEV000G'. Below the form, release and driver information are shown: 'RELEASE: V05R04M00' and 'DRIVER: 4501130'. A copyright notice reads: 'USE OF THIS SYSTEM IS FOR IBM MANAGEMENT APPROVED PURPOSES ONLY. USE IS SUBJECT TO AUDIT AT ANY TIME BY IBM MANAGEMENT.' At the bottom, a row of buttons includes 'Attention', 'Refresh Screen', 'Field Exit', 'Page Up', 'Enter', 'System Request', 'Stop Session', 'Reset', and 'Page Down'. An arrow points to the 'Stop Session' button with the text 'End this active session' below it.

Ending a Session from Active Session List

My Home Page

- My Folder
- Print
- Messages
- Jobs
- 5250
 - Active sessions
 - Configured sessions
 - Start session
- Database
- Files
- Command
- Download
- Customize
- Other

Related Links:

Active Sessions

Server	Session	Started	Last Accessed	View	Action ?
LP016AB.RCHLAND.IBM.COM	A	3/7/06 3:55:13 PM CST	3/8/06 12:58:01 PM CST	Web	

[View-only sessions](#)
 Display a list of active sessions others are sharing with me.

[Shared sessions](#)
 Display a list of active sessions I am sharing with others.

[Configured sessions](#)
 Work with your configured sessions.

[Start session](#)
 Start a new session.

[My macros](#)
 Work with your macros.

[My keypads](#)
 Work with your keypads.

[5250 user interface help](#)
 View help for working with active sessions.

↑ End session

Configure a New Session

- Select the "Configure new session" link

My Home Page

- My Folder
- Print
- Messages
- Jobs
- 5250
 - Active sessions
 - Configured sessions
 - Start session
- Database
- Files
- Command
- Download
- Customize
- Other

Configured Sessions

Session	Server	Action ?	Shortcut	Created By	Access
system A	LP016AB.RCHLAND.IBM.COM		No	smshao	smshao
system B	LP016AB.RCHLAND.IBM.COM		No	smshao	smshao

[Configure new session](#)
 Configure a new session.

[Shortcuts to sessions you configured](#)
 Display a list of shortcuts to sessions you configured. Shortcuts can be deleted from this list.

[Active sessions](#)
 Work with your active sessions.

[Start session](#)
 Start a new session.

[My macros](#)
 Work with your macros.

[My keypads](#)
 Work with your keypads.

Configure a New Session

- New sessions are added to the “Configured sessions” list
- Similar to “Start session” settings
 - Server, port, code page, workstation ID
- Additional settings
 - View and color

Configuring a New Session – Workstation ID

Workstation ID

- Use user ID
 Specify workstation ID
 Avoid duplicates for this user
 Avoid duplicates with other users

The Workstation ID options are:

Use user ID: The iSeries Access for Web authenticated user ID is used for the workstation ID, up to ten characters.

Specify workstation ID: Enter a workstation ID of your choice, up to ten characters. If you select the radio button and leave the text field blank, a value is generated by the server. The default device name starts with *QPADEV*.

The configuration options for avoiding conflicts are:

Avoid duplicates for this user: When this option is enabled, a wild card character is added to the device name to make it unique for the current user.

Avoid duplicates with other users: When this option is enabled, the server adds a wild card character to the device name to make it unique for all users on the server.

Configuring a New Session – Workstation ID

You can enter keyword and special characters, like you do for PC5250. Here is how they are handled.

Computer name or User name (&COMPN, &USERN): These keywords are accepted. However, they will not resolve to the PC name and the Windows login user ID like they do in PC5250.

Computer name: resolved to the System i name

User name: resolved to the user profile name of the web application server job.

Also note that using the &COMPN and &USERN keywords could result in workstation IDs that are longer than ten characters which would then be truncated.

Session Type ID (%): This will add an “S” to workstation ID, indicating that this is a display session. With PC5250, a “P” would replace the “%” if a printer session was started. However, iSeries Access for Web only has display sessions.

Configuring a New Session – Workstation ID

Keyword and special characters, continued...

Short session ID (*): Adding this character will make the ID unique for this user. The iSeries Access for Web option **Avoid duplicates for this user** causes the “*” character to be added at the end of the ID. Therefore, if you use both the “*” and Avoid duplicates for this user, then two special characters will be added to the workstation ID.

Collision Avoidance ID (=): Adding this character will make the session ID unique. The iSeries Access for Web option **Avoid duplicates with other users** causes the “=” character to be added at the end of the string. Therefore, if you use both the “=” and Avoid duplicates with other users, then two “=” will be added to the string..

Configured Session Actions

- Start
 - Start the configured session
- Copy
 - Make a copy of the configured session for yourself
- Delete
 - Delete the configured session
- Rename
 - Rename the configured session
- Create Shortcut
 - Share the configured session with another user or group of users
- Edit
 - Change the configured session settings

My Home Page		Configured Sessions					
My Folder		Session	Server	Action	Shortcut	Created By	Access
Print		Shortcut to system A	LP016AB.RCHLAND.IBM.COM		Yes	smshao	smshao
Messages		Shortcut to system B	LP016AB.RCHLAND.IBM.COM		Yes	smshao	*PUBLIC
Jobs		system A	LP016AB.RCHLAND.IBM.COM		No	smshao	smshao
5250		system B	LP016AB.RCHLAND.IBM.COM		No	smshao	smshao
Active sessions							
Configured sessions							

Shortcuts

- iSeries Access for Web objects are only accessible by users that created them
- Shortcut is a pointer to an iSeries Access for Web object
 - Configured 5250 session
 - Database request
- Method used to share object with other users
 - Create shortcut for user or group to share with user or group
- User of the shortcut has read only access to the object
 - Cannot modify or delete the object
 - Can delete the shortcut if the shortcut is created for the user
 - Cannot delete the shortcut if the shortcut is created for a group the user belongs to
- Shortcuts to an object are deleted when the object is deleted

Shortcut Example

My Home Page

- My Folder
- Print
- Messages
- Jobs
- 5250
 - Active sessions
 - Configured sessions
 - Start session
- Database

Configured Sessions

Session	Server	Action ?	Shortcut	Created By	Access
Shortcut to system A	LP016AB.RCHLAND.IBM.COM		Yes	smshao	smshao
Shortcut to system B	LP016AB.RCHLAND.IBM.COM		Yes	smshao	*PUBLIC
system A	LP016AB.RCHLAND.IBM.COM		No	smshao	smshao
system B	LP016AB.RCHLAND.IBM.COM		No	smshao	smshao

[Configure new session](#)
Configure a new session.

Annotations:

- Shortcut granted to user profile (points to Action icons)
- Indicates if request is a shortcut (points to Shortcut column)
- User or group that was granted access (points to Access column)
- Shortcut granted to group the user belongs to (points to Action icons)
- Owner of the request (points to Created By column)

i want an i. © 2006 IBM Corporation

Finding Shortcuts You Created

My Home Page

- My Folder
- Print
- Messages
- Jobs
- 5250
 - Active sessions
 - Configured sessions
 - Start session
- Database
- Files
- Command

Configured Sessions

Session	Server	Action ?	Shortcut	Created By	Access
Shortcut to system A	LP016AB.RCHLAND.IBM.COM		Yes	smshao	smshao
Shortcut to system B	LP016AB.RCHLAND.IBM.COM		Yes	smshao	*PUBLIC
system A	LP016AB.RCHLAND.IBM.COM		No	smshao	smshao
system B	LP016AB.RCHLAND.IBM.COM		No	smshao	smshao

[Configure new session](#)
Configure a new session.

[Shortcuts to sessions you configured](#) ←

Display a list of shortcuts to sessions you configured. Shortcuts can be deleted from this list.

Click the "Shortcuts to sessions you configured" link

Managing Shortcuts You Created

- List of shortcuts you created
- Delete shortcuts you created

My Home Page

- My Folder
- Print
- Messages
- Jobs
- 5250
 - Active sessions
 - Configured sessions
 - Start session

Shortcuts to Sessions You Configured

<< < [1] > >> ↻

Session	Shortcut	Access	Action
system A	Shortcut to system A	smshao	
system B	Shortcut to system B	*PUBLIC	

<< < [1] > >> ↻

Keypads

My Home Page

- My Folder
- Print
- Messages
- Jobs
- 5250
 - Active sessions
 - Configured sessions
 - Start session
- Database
- Files
- Command
- Download
- Customize
- Other

Related Links:

- iSeries Access for Web
- iSeries Access
- iSeries Navigator
- iSeries Information Center
- iSeries Resource Library

F1 F2 F3 F4 F5 F6 F7 F8 F9 F10 F11 F12

Sign On

System LP016AB
 Subsystem QINTER
 Display QPADEV000G

User

Password

Program/procedure

Menu

Current library

RELEASE: V05R04M00
 DRIVER: 4501130

USE OF THIS SYSTEM IS FOR IBM MANAGEMENT APPROVED PURPOSES ONLY.
 USE IS SUBJECT TO AUDIT AT ANY TIME BY IBM MANAGEMENT.

(C) COPYRIGHT IBM CORP. 1980, 2005. 6,53

Attention

Refresh Screen

Field Exit

Page Up

Enter

System Request

Stop Session

Reset

Page Down

Keypads

- Three sets of keypads
 - Top, right, and bottom
 - Each set can be customized
 - Each set can be turned on or off
- Macros can be assigned to keypad
- Configuration is per user
 - One keypad configuration per user
 - Global across all session configurations
 - Not tied to session configuration

Configuring Keypad

Download
Customize
Other

USE OF THIS SYSTEM IS FOR IBM MANAGEMENT APPROVED PURPOSES ONLY.
USE IS SUBJECT TO AUDIT AT ANY TIME BY IBM MANAGEMENT.

(C) COPYRIGHT IBM CORP. 1980, 2005.

Related Links:

- iSeries Access for Web
- iSeries Access
- iSeries Navigator
- iSeries Information Center
- iSeries Resource Library

37

Attention	Refresh Screen	Field Exit	Page Up	Enter
System Request	Stop Session	Reset	Page Down	

6,53

Macros

Macro:

[Traditional view](#)

Switch this session to traditional view.

[Active session settings](#)

Change the settings for this session.

[Active sessions](#)

Work with your active sessions.

[Configured sessions](#)

Work with your configured sessions.

[My macros](#)

Work with your macros.

[My keypads](#)

Work with your keypads.

[S250 user interface help](#)

View help for using the S250 user interface.

Configuring Keypad

My Home Page

- My Folder
- Print
- Messages
- Jobs
- 5250
 - Active sessions
 - Configured sessions
 - Start session
- Database
- Files
- Command
- Download
- Customize
- Other

Related Links:

- iSeries Access for Web
- iSeries Access
- iSeries Navigator
- iSeries Information Center
- iSeries Resource

My Keypads

Top Keypad

Rows

Columns

Show keypad ← Turn keypad on and off

Configure



Side Keypad

Rows

Columns

Show keypad ← Configure keypad layout

Configure

Bottom Keypad

Rows

Columns

Show keypad ← Configure number of keys on the keypad

Configure

Configuring Keypad

My Home Page

- My Folder
- Print
- Messages
- Jobs
- 5250
 - Active sessions
 - Configured sessions
 - Start session
- Database
- Files
- Command
- Download
- Customize
- Other

Related Links:

Configure Bottom Keypad

Attention	Refresh Screen	Field Exit
System Request	Stop Session	Reset
<input type="button" value="OK"/> <input type="button" value="Cancel"/>		
5250 user interface help View help for working with your keypads.		
Field Exit Field Mark Field Minus Field Plus Field Reverse Help Home Host Print Insert Latin Layer New Line PA1 PA2 PA3 Page Down Page Up Refresh Screen Reset Screen Reverse Stop Session		

Macros

- Behaves differently than PC5250
 - Keys processed on a screen by screen basis
 - PC5250 – every key is recorded and played back
 - iSeries Access for Web – cursor positioned in field and keys entered into field
 - On a given screen, keys may not be processed in the same order as they are entered
 - Functionally equivalent, but behaves differently

Recording Macros

My Home Page

- My Folder
- Print
- Messages
- Jobs
- 5250
 - Active sessions
 - Configured sessions
 - Start session
- Database
- Files
- Command
- Download
- Customize
- Other

Sign On

System : LP016AB
 Subsystem : QINTER
 Display : QPADEV000G

User :
 Password :
 Program/procedure :
 Menu :
 Current library :

RELEASE: V05R04M00
 DRIVER: 4501130

USE OF THIS SYSTEM IS FOR IBM MANAGEMENT APPROVED PURPOSES ONLY.
 USE IS SUBJECT TO AUDIT AT ANY TIME BY IBM MANAGEMENT.

(C) COPYRIGHT IBM CORP. 1980, 2005.

37 6,53

Attention	Refresh Screen	Field Exit	Page Up	Enter
System Request	Stop Session	Reset	Page Down	

Macro: [Shortcut to My macro for *PUBLIC]

←

Stop Recording

- My Home Page
- My Folder
- Print
- Messages
- Jobs
- 5250
 - Active sessions
 - Configured sessions
 - Start session
- Database
- Files
- Command
- Download
- Customize
- Other

Sign On

System LP016AB
 Subsystem QINTER
 Display QPADEV000G

User
 Password
 Program/procedure
 Menu
 Current library

RELEASE: V05R04M00
 DRIVER: 4501130

USE OF THIS SYSTEM IS FOR IBM MANAGEMENT APPROVED PURPOSES ONLY.
 USE IS SUBJECT TO AUDIT AT ANY TIME BY IBM MANAGEMENT.

(C) COPYRIGHT IBM CORP. 1980, 2005.

- Related Links:
- Series Access for Web
 - Series Access
 - Series Navigator
 - Series Information Center
 - Series Resource Library

37 R 6,53

Attention	Refresh Screen	Field Exit	Page Up	Enter
System Request	Stop Session	Reset	Page Down	

Macro: Shortcut to My macro for *PUBLIC

Stop Recording ← Play Macro

Naming the Macro

- My Home Page
- My Folder
- Print
- Messages
- Jobs
- 5250
 - Active sessions
 - Configured sessions
 - Start session
- Database
- Files
- Command
- Download
- Customize
- Other

Save Macro

Macro: my login macro

Replace if already exists

Save Macro Cancel

Playing Macro

My Home Page

- My Folder
- Print
- Messages
- Jobs
- 5250
- Active sessions
- Configured sessions
- Start session
- Database
- Files
- Command
- Download
- Customize
- Other

Sign On

System	LP016AB	
Subsystem	QINTER	
Display	QPDEV000G	

User	<input type="text"/>	
Password	<input type="password"/>	
Program/procedure	<input type="text"/>	
Menu	<input type="text"/>	
Current library	<input type="text"/>	

RELEASE: V05R04M00
 DRIVER: 4501130

USE OF THIS SYSTEM IS FOR IBM MANAGEMENT APPROVED PURPOSES ONLY.
 USE IS SUBJECT TO AUDIT AT ANY TIME BY IBM MANAGEMENT.

(C) COPYRIGHT IBM CORP. 1980, 2005.

37		6,53
<input type="button" value="Attention"/>	<input type="button" value="Refresh Screen"/>	<input type="button" value="Field Exit"/>
<input type="button" value="System Request"/>	<input type="button" value="Stop Session"/>	<input type="button" value="Reset"/>
<input type="button" value="Page Up"/>	<input type="button" value="Page Down"/>	<input type="button" value="Enter"/>

Macros

Macro: ←

Managing Macros

Related Links:

- iSeries Access for Web
- iSeries Access
- iSeries Navigator
- iSeries Information Center
- iSeries Resource Library

(C) COPYRIGHT IBM CORP. 1980, 2005.

37		6,53
<input type="button" value="Attention"/>	<input type="button" value="Refresh Screen"/>	<input type="button" value="Field Exit"/>
<input type="button" value="System Request"/>	<input type="button" value="Stop Session"/>	<input type="button" value="Reset"/>
<input type="button" value="Page Up"/>	<input type="button" value="Page Down"/>	<input type="button" value="Enter"/>

Macros

Macro:

[Traditional view](#)
 Switch this session to traditional view.

[Active session settings](#)
 Change the settings for this session.

[Active sessions](#)
 Work with your active sessions.

[Configured sessions](#)
 Work with your configured sessions.

[My macros](#) ←
 Work with your macros.

[My keypads](#)
 Work with your keypads.

[5250 user interface help](#)
 View help for using the 5250 user interface.

Macro List

My Home Page

- My Folder
- Print
- Messages
- Jobs
- 5250
 - Active sessions
 - Configured sessions
 - Start session
- Database
- Files
- Command
- Download
- Customize
- Other

My Macros

⏪ ⏴ ⏵ ⏩ [1] ↺

Macro	Action ?	Shortcut	Created By	Access
my login macro		No	smshao	smshao
Shortcut to My macro		Yes	aliciam	*PUBLIC

⏪ ⏴ ⏵ ⏩ [1] ↺

[Active sessions](#)
Work with your active sessions.

[Shortcuts to macros you recorded](#)
Display a list of shortcuts to macros you recorded. Shortcuts can be deleted from this list.

[Configured sessions](#)
Work with your configured sessions.

[Start session](#)
Start a new session.

Editing a Macro

My Home Page

- My Folder
- Print
- Messages
- Jobs
- 5250
 - Active sessions
 - Configured sessions
 - Start session
- Database
- Files
- Command
- Download
- Customize
- Other

Edit Macro

Macro: **my login macro**

```
[cursor 6,53][erased]myid[cursor 7,53][erased]mypassword[enter][wait][enter][wait]
```

Related Links:

- iSeries Access for Web

Notes: supported commands for macros

The supported cursor positioning commands are:

General macro commands
 [attn] - Attention
 [altview] - Alternate View
 [backspace] - Backspace
 [backtab] - Backtab
 [bof] - Beginning of field
 [clear] - Clear
 [down] - Cursor down
 [left] - Cursor left
 [right] - Cursor right
 [curselect] - Cursor select
 [up] - Cursor up
 [delete] - Delete character
 [dspsosi] - Display SO/SI
 [dup] - DUP field
 [enter] - Enter
 [eof] - End of field
 [eraseeof] - Erase EOF
 [erasefld] - Erase field
 [erinp] - Erase input
 [fldext] - Field exit
 [fieldmark] - Field mark
 [field-] - Field minus
 [field+] - Field plus

General macro commands...

[pf1] - F1
 [pf2] - F2
 [pf3] - F3
 [pf4] - F4
 [pf5] - F5
 [pf6] - F6
 [pf7] - F7
 [pf8] - F8
 [pf9] - F9
 [pf10] - F10
 [pf11] - F11
 [pf12] - F12
 [pf13] - F13
 [pf14] - F14
 [pf15] - F15
 [pf16] - F16
 [pf17] - F17
 [pf18] - F18
 [pf19] - F19
 [pf20] - F20
 [pf21] - F21
 [pf22] - F22
 [pf23] - F23
 [pf24] - F24
 [help] - Help
 [home] - Home

General macro commands...

[insert] - Insert
 [newline] - New line
 [pa1] - PA1
 [pa2] - PA2
 [pa3] - PA3
 [pageup] - Page up
 [pagedn] - Page down
 [reset] - Reset
 [sysreq] - System request
 [tab] - Tab field
 [test] - Test request

Bi-directional text support commands

[base] - Base
 [close] - Close
 [fldrev] - Field reverse
 [latinlayer] - Latin layer
 [screenrev] - Screen reverse

Other macro commands

[cursor row,column] - Locate cursor at specified row and column. Row and column must be numbers.
 [pause] - Pause 1 second
 [pause n] - Pause n seconds
 [wait] - Wait for input

Sharing a Macro

My Home Page

My Folder

Print

Messages

Jobs

5250

Active sessions

Configured sessions

Start session

Database

Files

Command

Download

Customize

Other

My Macros

Navigation icons: back, forward, search, refresh

Macro	Action ?	Shortcut	Created By	Access
my login macro		No	smshao	smshao
Shortcut to My macro		Yes	aliciam	*PUBLIC

Navigation icons: back, forward, search, refresh

Create shortcut

Active sessions

Work with your active sessions.

Shortcuts to macros you recorded

Display a list of shortcuts to macros you recorded. Shortcuts can be deleted from this list.

Configured sessions

Work with your configured sessions.

Start session

Start a new session.

Managing Macro Shortcuts

My Home Page

- My Folder
- Print
- Messages
- Jobs
- 5250
 - Active sessions
 - Configured sessions
 - Start session
- Database
- Files
- Command
- Download
- Customize
- Other

My Macros

|<<< [1] >>>| ↻

Macro	Action	Shortcut	Created By	Access
my login macro		No	smshao	smshao
Shortcut to My macro		Yes	aliciam	*PUBLIC

|<<< [1] >>>| ↻

[Active sessions](#)
Work with your active sessions.

[Shortcuts to macros you recorded](#) ←
Display a list of shortcuts to macros you recorded. Shortcuts can be deleted from this list.

[Configured sessions](#)
Work with your configured sessions.

[Start session](#)
Start a new session.

Macro Shortcut List

My Home Page

- My Folder
- Print
- Messages
- Jobs
- 5250
 - Active sessions
 - Configured sessions
 - Start session
- Database
- Files
- Command
- Download
- Customize
- Other

Shortcuts to Macros You Recorded

|<<< [1] >>>| ↻

Macro	Shortcut	Access	Action
my login macro	Shortcut to my login macro	smshao	

|<<< [1] >>>| ↻

[My macros](#)
Work with your macros.

[Active sessions](#)
Work with your active sessions.

[Configured sessions](#)
Work with your configured sessions.

[Start session](#)
Start a new session.

[My keypads](#)
Work with your keypads.

Single Sign On with Macro

- Create a macro to login to 5250
 - Using your own user ID and password
- Edit the macro and replace your user ID and password with directives to use the user's login
- Share the macro (create shortcut) with the user or group
- Associate the macro with a session so the macro is executed when the session starts
- Share the session (create shortcut) with the user or group

Edit Macro

My Home Page	Edit Macro
<ul style="list-style-type: none"> My Folder Print Messages Jobs 5250 <ul style="list-style-type: none"> • Active sessions • Configured sessions • Start session Database Files Command Download Customize Other 	<p>Macro: macro example</p> <pre>[cursor 6,53][erasefd]mvid[cursor 7,53][erasefd]mvpasword[enter][wait][cursor 20,7][erasefd]wrkactjob[enter][wait]</pre>
<p>Related Links:</p> <ul style="list-style-type: none"> • iSeries Access for Web 	<input type="button" value="Save"/> <input type="button" value="Cancel"/>

Edit Macro

- My Home Page
- My Folder
- Print
- Messages
- Jobs
- 5250
 - Active sessions
 - Configured sessions
 - Start session
- Database
- Files
- Command
- Download
- Customize
- Other

Edit Macro

Macro: macro example

```
[cursor 6,53][erasefid][user] cursor
7,53][erasefid][password] enter][wait][enter][wait][cursor
20,7][erasefid]wrkaccjob[enter][wait]
```

Replace the recorded user ID with [user]
 Replace the recorded password with [password]

Related Links:
 • iSeries Access for Web

Share the Macro

- My Home Page
- My Folder
- Print
- Messages
- Jobs
- 5250
 - Active sessions
 - Configured sessions
 - Start session
- Database
- Files
- Command
- Download
- Customize
- Other

Create Shortcut

Create shortcut to "macro example"

Shortcut name:
 Access:

Access Details

- The access value identifies who is able to access the shortcut.
- The access value can be an existing user profile name on the iSeries server, an existing group profile name, or *PUBLIC.
- To specify multiple profiles, separate entries with commas.

[My macros](#)
 Work with your macros.

Create New Session

My Home Page

- My Folder
- Print
- Messages
- Jobs
- 5250
 - Active sessions
 - Configured sessions
 - Start session
- Database
- Files
- Command
- Download
- Customize
- Other

Configure New Session

General

Session: * required ?

Default view: ▼

Initial macro: ▼ ←

Bypass signon

Display HTML data in fields

Enable advanced JavaScript functions

Server

Server: ?

Port:

Code page: ▼

Share the Session

My Home Page

- My Folder
- Print
- Messages
- Jobs
- 5250
 - Active sessions
 - Configured sessions
 - Start session
- Database
- Files
- Command
- Download
- Customize
- Other

Create Shortcut

Create shortcut to "single signon example"

Shortcut name:

Access:

Access Details

- The access value identifies who is able to access the shortcut.
- The access value can be an existing user profile name on the iSeries server, an existing group profile name, or *PUBLIC.
- To specify multiple profiles, separate entries with commas.

[Configured sessions](#)
 Work with your configured sessions.

Starting the Session

My Home Page

- My Folder
- Print
- Messages
- Jobs
- 5250
 - Active sessions
 - Configured sessions
 - Start session
- Database
- Files
- Command
- Download
- Customize
- Other

Configured Sessions

Session	Server	Action	Shortcut	Created By	Access
Shortcut to single signon example	lp016ab.rchland.ibm.com		Yes	smshao	smshao
Shortcut to system A	LP016AB.RCHLAND.IBM.COM		Yes	smshao	smshao
Shortcut to system B	LP016AB.RCHLAND.IBM.COM		Yes	smshao	*PUBLIC
single signon example	lp016ab.rchland.ibm.com		No	smshao	smshao
system A	LP016AB.RCHLAND.IBM.COM		No	smshao	smshao
system B	LP016AB.RCHLAND.IBM.COM		No	smshao	smshao

[Configure new session](#)
[Configure a new session.](#)

[Shortcuts to sessions you configured](#)
 Display a list of shortcuts to sessions you configured. Shortcuts can be deleted from this list.

[Active sessions](#)
 Work with your active sessions.

[Start session](#)
 Start a new session.

Related Links:

Start Session Result

**User is taken directly to the application
 5250 session is logged in using the user's ID and password**

My Home Page

- My Folder
- Print
- Messages
- Jobs
- 5250
 - Active sessions
 - Configured sessions
 - Start session
- Database
- Files
- Command
- Download
- Customize
- Other

Work with Active Jobs

03/09/06 LP016AB
15:54:26

CPU %: .0 Elapsed time: 00:00:00 Active jobs: 384

Type options, press Enter.
 2=Change 3=Hold 4=End 5=Work with 6=Release 7=Display message
 8=Work with spooled files 13=Disconnect ...

Opt	Subsystem/Job	User	Type	CPU %	Function	Status
<input type="checkbox"/>	QBATCH	QSYS	SBS	.0		DEQW
<input type="checkbox"/>	QCMN	QSYS	SBS	.0		DEQW
<input type="checkbox"/>	QCTL	QSYS	SBS	.0		DEQW
<input type="checkbox"/>	QSYSSCD	QPGMR	BCH	.0	PGM-QEZSCNEP	EVTW
<input type="checkbox"/>	QHTTPSVR	QSYS	SBS	.0		DEQW
<input type="checkbox"/>	ADMIN	QTMHHTTP	BCH	.0	PGM-QZHBMAIN	SIGW
<input type="checkbox"/>	ADMIN	QTMHHTTP	BCI	.0	PGM-QZSRLOG	SIGW
<input type="checkbox"/>	ADMIN	QTMHHTTP	BCI	.0	PGM-QZSRHTTP	SIGW
<input type="checkbox"/>	ADMIN	MMEINERS	BCI	.0	PGM-QYUNLANG	TIMW

Parameters or command

====>

37 10,2

Bypass Signon

- New in V5R4
- Uses the credential the user used to login to iSeries Access for Web
- Option available for configured and dynamically started session
- QRMTSIGN system value must be set to *VERIFY

Bypass Signon

My Home Page	Start Session
My Folder	
Print	
Messages	
Jobs	
5250	
• Active sessions	
• Configured sessions	
• Start session	
Database	
Files	
Command	
Download	
Customize	
Other	
Related Links:	
• iSeries Access for Web	
• iSeries Access	

Server ?
Server:
Port:
Code page: ▼

Workstation ID ?
 Use user ID
 Specify workstation ID
 Avoid duplicates for this user
 Avoid duplicates with other users

General ?
Initial macro: ▼
 Bypass signon
 Display HTML data in fields

Session Defaults

- Default values are used to
 - Start a session dynamically
 - Configure a new session
- Two ways to set defaults
 - User can set the default values
 - Default values only apply to the user
 - Use a configured session as default (policy)
 - May be set for user or group
 - If both are set, policy setting overrides user defaults

Setting User Defaults

“Save As Default” saves this session configuration as the default for the current user.

Can be performed from active session settings or configured session settings.

Foreground colors

5250 Browser

Black: ▼

Blue: ▼

Green: ▼

Cyan: ▼

Red: ▼

Magenta: ▼

Brown: ▼

White: ▼

Foreground colors

5250 Browser

Black: ▼

Blue: ▼

Green: ▼

Cyan: ▼

Red: ▼

Magenta: ▼

Brown: ▼

White: ▼

Operator information area (OIA)

Color: ▼

Operator information area (OIA)

Color: ▼

Background colors

The browser background color is used.

Background colors

Color: ▼

[5250 user interface help](#)

View help for editing a configured session.

Setting Default Session

Use a configured session as the default for a user or group
 Select the user or group profile to edit policies

My Home Page

- My Folder
- Print
- Messages
- Jobs
- 5250
- Database
- Files
- Command
- Download
- Customize
 - Preferences
 - Policies
 - Settings
 - Transfer configuration
- Other

Policies

Specify the profile you want to edit.

Profile:

[User profiles](#)
 Work with the user profiles you are authorized to customize.

[Group profiles](#)
 Work with the group profiles you are authorized to customize.

[Import policies](#)
 Import policies from a file into iSeries Access for Web.

[Export policies](#)
 Export policies from iSeries Access for Web to a file.

[Policies help](#)
 View help for working with policies.

Setting Default Session

Select 5250 to edit the 5250 policies

My Home Page

- My Folder
- Print
- Messages
- Jobs
- 5250
- Database
- Files
- Command
- Download
- Customize
 - Preferences
 - Policies
 - Settings
 - Transfer configuration
- Other

Policies

Profile: SMSHAO

Action	Category	Description	Access
<input checked="" type="checkbox"/>	5250	5250 user interface custom settings.	Allowed
<input checked="" type="checkbox"/>	Command	Run batch command custom settings.	Allowed
<input checked="" type="checkbox"/>	Customize	Preferences and policy administration custom settings.	Allowed
<input checked="" type="checkbox"/>	Database	Database tables, requests, and run SQL custom settings.	Allowed
<input checked="" type="checkbox"/>	Database connections	Create and edit database connection definitions.	Allowed
<input checked="" type="checkbox"/>	Download	Download packages custom settings.	Allowed
<input checked="" type="checkbox"/>	Files	Integrated file system and file share custom settings.	Allowed
<input checked="" type="checkbox"/>	General	Page layout, language and character set custom settings.	Allowed
<input checked="" type="checkbox"/>	Jobs	Work with jobs custom settings.	Allowed
<input checked="" type="checkbox"/>	Mail	Send mail custom settings.	Allowed
<input checked="" type="checkbox"/>	Messages	Display messages, send messages, and message queue custom settings.	Allowed
<input checked="" type="checkbox"/>	My Folder	My Folder custom settings.	Allowed
<input checked="" type="checkbox"/>	Print	Printer output, printers, printer shares and output queue custom settings.	Allowed
<input checked="" type="checkbox"/>	Sametime	Lotus Sametime custom settings.	Allowed
<input checked="" type="checkbox"/>	Other	Change password and other miscellaneous custom settings.	Allowed

Related Links:

- iSeries Access for Web
- iSeries Access

Setting Default Session

Select the shortcut to the session to use as the default and apply the policy

My Home Page

- My Folder
- Print
- Messages
- Jobs
- 5250
- Database
- Files
- Command
- Download
- Customize
 - Preferences
 - Policies
 - Settings
 - Transfer configuration
- Other

Related Links:

- iSeries Access for Web
- iSeries Access
- iSeries Navigator
- iSeries Information Center
- iSeries Resource Library

Edit Policies - 5250

Profile: **SMSHAO**

Policy	Derived From	Action	Setting
5250 access	Shipped default	Use current setting	Allow
5250 tab	Shipped default	Use current setting	Show
Start non-configured sessions	Shipped default	Use current setting	Allow
Prompt when starting non-configured sessions	Shipped default	Use current setting	Yes
Show server name in title	Shipped default	Use current setting	Yes
Show configured session name in title	Shipped default	Use current setting	No
Maximum active sessions	Shipped default	Use current setting	No maximum
Inactive session timeout	Shipped default	Use current setting	24 hours
Active sessions list columns	Shipped default	Use current setting	Columns...
Configured session to use for defaults	Shipped default	Use current setting	User defaults
Save settings as user defaults	Shipped default	Use current setting	User defaults
Load settings from user defaults	Shipped default	Use current setting	Shortcut to single signon example for SMSHAO
Load settings from shipped defaults	Shipped default	Use current setting	Shortcut to system A for SMSHAO
Load settings from shipped defaults	Shipped default	Use current setting	Shortcut to system B for *PUBLIC single signon example system A system B
Switch between Web/Traditional views	Shipped default	Use current setting	Allow
Edit active session settings	Shipped default	Use current setting	Allow
Bypass signon	Shipped default	Use current setting	Allow

5250 Policies

Policies are used by administrators to control the iSeries Access for Web functions and behavior

My Home Page

- My Folder
- Print
- Messages
- Jobs
- 5250
- Database
- Files
- Command
- Download
- Customize
 - Preferences
 - Policies
 - Settings
 - Transfer configuration
- Other

Related Links:

- iSeries Access for Web
- iSeries Access
- iSeries Navigator
- iSeries Information Center

Edit Policies - 5250

Profile: **SMSHAO**

Policy	Derived From	Action	Setting
5250 access	Shipped default	Use current setting	Allow
5250 tab	Shipped default	Use current setting	Show
Start non-configured sessions	Shipped default	Use current setting	Allow
Prompt when starting non-configured sessions	Shipped default	Use current setting	Yes
Show server name in title	Shipped default	Use current setting	Yes
Show configured session name in title	Shipped default	Use current setting	No
Maximum active sessions	Shipped default	Use current setting	No maximum
Inactive session timeout	Shipped default	Use current setting	24 hours
Active sessions list columns	Shipped default	Use current setting	Columns...
Configured session to use for defaults	Shipped default	Use current setting	User defaults
Save settings as user defaults	Shipped default	Use current setting	Allow
Load settings from user defaults	Shipped default	Use current setting	Allow
Load settings from shipped defaults	Shipped default	Use current setting	Allow
Load settings from shipped defaults	Shipped default	Use current setting	Allow
Switch between Web/Traditional views	Shipped default	Use current setting	Allow

5250 Preferences

Preferences are settings that the user can modify

Edit Preferences - 5250

Preference	Derived From	Action	Setting
5250 tab	Shipped default	Use current setting	Show
Prompt when starting non-configured sessions	Shipped default	Use current setting	Yes
Show server name in title	Shipped default	Use current setting	Yes
Show configured session name in title	Shipped default	Use current setting	No
Active sessions list columns	Shipped default	Use current setting	Columns...
Configured sessions			
Configured sessions list columns	Shipped default	Use current setting	Columns...
My macros			
My macros list columns	Shipped default	Use current setting	Columns...

[Preferences help](#)
 View help for editing preferences.

5250 Settings

Settings are global – applies for all users and groups.

Session wait time is the amount of time iWA5250 will wait after input inhibit is off before rendering the screen content.

Bump this value up if the application or system is slow in responding.

Edit Settings - 5250

Setting	Value	Description
Session wait time	200 milliseconds	Specify the maximum time to wait for session content after input is not inhibited.

Sharing an Active Session

Give another user or group a read only view into an active session.

Server	Session	Started	Last Accessed	View	Action
LP016AB.RCHLAND.IBM.COM	A	3/11/06 6:19:29 PM CST	3/11/06 6:19:59 PM CST	Web	

[View-only sessions](#)
 Display a list of active sessions others are sharing with me.

[Shared sessions](#)
 Display a list of active sessions I am sharing with others.

[Configured sessions](#)
 Work with your configured sessions.

[Start session](#)
 Start a new session.

[My macros](#)
 Work with your macros.

[My keypads](#)
 Work with your keypads.

Notes: Shared Sessions

Active sessions can be shared with other users and groups. The user who starts the session maintains full control of it. Users with whom the session is shared can only view the session. They cannot enter input or change the session settings. Changes to a shared session are not automatically seen by users viewing the session. The browser's refresh button must be used to see the latest changes.

Sharing an Active Session

Enter the user or group profile to share the session with.

My Home Page	Share 5250 Session	
My Folder	Users: <input type="text" value="joe"/>	<input type="button" value="Browse..."/>
Print	<input type="button" value="Share Session"/>	
Messages		
Jobs		
5250		

View-only Sessions

Select "View-only sessions" link to display the list of view-only sessions

My Home Page	Active Sessions												
My Folder	<table border="1"> <thead> <tr> <th>Server</th> <th>Session</th> <th>Started</th> <th>Last Accessed</th> <th>View</th> <th>Action</th> </tr> </thead> <tbody> <tr> <td>LP016AB.RCHLAND.IBM.COM</td> <td>A</td> <td>3/11/06 6:19:29 PM CST</td> <td>3/11/06 6:19:59 PM CST</td> <td>Web</td> <td> </td> </tr> </tbody> </table>	Server	Session	Started	Last Accessed	View	Action	LP016AB.RCHLAND.IBM.COM	A	3/11/06 6:19:29 PM CST	3/11/06 6:19:59 PM CST	Web	
Server	Session	Started	Last Accessed	View	Action								
LP016AB.RCHLAND.IBM.COM	A	3/11/06 6:19:29 PM CST	3/11/06 6:19:59 PM CST	Web									
Print	View-only sessions ← Display a list of active sessions others are sharing with me.												
Messages	Shared sessions Display a list of active sessions I am sharing with others.												
Jobs	Configured sessions Work with your configured sessions.												
5250	Start session Start a new session.												
• Active sessions	My macros Work with your macros.												
• Configured sessions	My keypads Work with your keypads.												
• Start session	5250 user interface help View help for working with active sessions.												
Database													
Files													
Command													
Download													
Customize													
Other													
Related Links:													

View-only Session List

Click the "View" button to view the session.

My Home Page	View-only Sessions
My Folder	
Print	
Messages	
Jobs	
5250	
• Active sessions	Active sessions Work with your active sessions.
• Configured sessions	Configured sessions Work with your configured sessions.
• Start session	Start session Start a new session.
Database	
Files	My macros Work with your macros.
Command	My keypads Work with your keypads.
Download	
Customize	5250 user interface help View help for working with shared sessions.
Other	

Server	Session	Owner	Access	Action ?
LP016AB.RCHLAND.IBM.COM	A	smshao	SMSHAO	

View-only Session

View-only session - input fields are disabled.

Use the browser "Refresh" button to display updated screens.

My Home Page	Work with Active Jobs		LP016AB
My Folder	CPU %: .0	Elapsed time: 00:00:00	03/11/06 18:19:58
Print	Active jobs: 341		
Messages	Type options, press Enter.		
Jobs	2=Change 3=Hold 4=End 5=Work with 6=Release 7=Display message		
5250	8=Work with spooled files 13=Disconnect ...		
• Active sessions	Opt	Subsystem/Job	Current
• Configured sessions	—	QBATCH	QSYS SBS .0
• Start session	—	QCMN	QSYS SBS .0
Database	—	QCTL	QSYS SBS .0
Files	—	QSYSSCD	QPGMR BCH .0 PGM-QEZSCNEP
Command	—	QHTTPSVR	QSYS SBS .0
Download	—	ADMIN	QTMHHTTP BCH .0 PGM-QZHBMAIN
Customize	—	ADMIN	QTMHHTTP BCI .0 PGM-QZSRLOG
Other	—	ADMIN	QTMHHTTP BCI .0 PGM-QZSRHTTP
	—	IWATOMCAT	QTMHHTTP BCH .0 PGM-QZHBMAIN
			More...
	Parameters or command		
	====>		
	F3=Exit	F5=Refresh	F7=Find
	F11=Display elapsed data	F12=Cancel	F10=Restart statistics
			F23=More options
			F24=More keys

Managing Shared Sessions

Select “Shared sessions” from the “Active Sessions” list to display the list of active sessions that are being shared.

My Home Page

- My Folder
- Print
- Messages
- Jobs
- 5250
 - Active sessions
 - Configured sessions
 - Start session
- Database
- Files
- Command
- Download
- Customize
- Other

Active Sessions

Server	Session	Started	Last Accessed	View	Action ?
LP016AB.RCHLAND.IBM.COM	A	3/11/06 6:19:29 PM CST	3/11/06 6:19:59 PM CST	Web	

[View-only sessions](#)
Display a list of active sessions others are sharing with me.

[Shared sessions](#) ←
Display a list of active sessions I am sharing with others.

[Configured sessions](#)
Work with your configured sessions.

[Start session](#)
Start a new session.

[My macros](#)
Work with your macros.

[My keypads](#)
Work with your keypads.

[5250 user interface help](#)
View help for working with active sessions.

Shared Session List

Use the “Stop sharing” button to stop sharing this session.

My Home Page

- My Folder
- Print
- Messages
- Jobs
- 5250
 - Active sessions
 - Configured sessions
 - Start session
- Database
- Files
- Command
- Download
- Customize
- Other

Shared Sessions

Server	Session	Access	Action ?
LP016AB.RCHLAND.IBM.COM	A	SMSHAO	

[Active sessions](#)
Work with your active sessions.

[Configured sessions](#)
Work with your configured sessions.

[Start session](#)
Start a new session.

[My macros](#)
Work with your macros.

[My keypads](#)
Work with your keypads.

[5250 user interface help](#)
View help for working with shared sessions.

Fonts

- iSeries Access for Web 5250 is rendered with HTML
 - Fonts are controlled by the browser
 - Use browser options to change the font style and font size

New in V5R4

- Bypass signon
- DDS HTML support
- Hotspot – detect HTTP URLs

Bypass Signon

Use the credential that was used to log in to iSeries Access for Web to bypass signon

My Home Page

- My Folder
- Print
- Messages
- Jobs
- 5250
 - Active sessions
 - Configured sessions
 - Start session
- Database
- Files
- Command
- Download
- Customize
- Other

Related Links:

- iSeries Access for Web
- iSeries Access

Start Session

Server ?

Server:

Port:

Code page:

Workstation ID ?

Use user ID

Specify workstation ID

Avoid duplicates for this user

Avoid duplicates with other users

General ?

Initial macro:

Bypass signon ←

Display HTML data in fields

Start Session

DDS HTML Support

HTML contained within 5250 screen

My Home Page

- My Folder
- Print
- Messages
- Jobs
- 5250
 - Active sessions
 - Configured sessions
 - Start session
- Database
- Files
- Command
- Download
- Customize
- Other

Related Links:

- iSeries Access for Web
- iSeries Access
- iSeries Navigator
- iSeries Information Center
- iSeries Resource Library

F

Test Header ←

first output field

PRESS ENTER TO CONTINUE

37 1,1

Attention	Refresh Screen	Field Exit	Page Up	Enter
System Request	Stop Session	Reset	Page Down	

IBM System i

Hotspot

My Home Page

- My Folder
- Print
- Messages
- Jobs
- 5250
- Active sessions
- Configured sessions
- Start session
- Database
- Files
- Command
- Download
- Customize
- Other

Related Links:

- iSeries Access for Web
- iSeries Access

3/13/06 13:09:19 Page 1 URL Testing LP126AB SMSGAD

Case tests
lower http://w3.rchland.ibm.com/
UPPER HTTP://W3.RCHLAND.IBM.COM/
CaMeL HTTP://w3.rchland.ibm.com/

Case test secure
lower https://w3.rchland.ibm.com/~jhansen/qiwa/service/v5r3m0/
UPPER HTTPS://w3.rchland.ibm.com/~jhansen/qiwa/service/v5r3m0/
CaMeL HTTPS://w3.rchland.ibm.com/~jhansen/qiwa/service/v5r3m0/

Case test secure
lower https://w3.rchland.ibm.com/~jhansen/qiwa/service/v5r
UPPER HTTPS://w3.rchland.ibm.com/~jhansen/qiwa/service
CaMeL HTTPS://w3.rchland.ibm.com/~jhansen/qiwa/service/v5r3m
0/

37

Attc

System

- Active sessions
- Configured sessions
- Start session
- Database
- Files
- Command
- Download
- Customize
- Other

Related Links:

- iSeries Access for Web
- iSeries Access

3/13/06 13:09:19 Page 1 URL Testing LP126AB SMSGAD

Case tests
lower http://w3.rchland.ibm.com/
UPPER HTTP://W3.RCHLAND.IBM.COM/
CaMeL HTTP://w3.rchland.ibm.com/

Case test secure
lower https://w3.rchland.ibm.com/~jhansen/qiwa/service/v5r3m0/
UPPER HTTPS://w3.rchland.ibm.com/~jhansen/qiwa/service/v5r3m0/
CaMeL HTTPS://w3.rchland.ibm.com/~jhansen/qiwa/service/v5r3m0/

Case test secure
lower https://w3.rchland.ibm.com/~jhansen/qiwa/service/v5r
UPPER HTTPS://w3.rchland.ibm.com/~jhansen/qiwa/service
CaMeL HTTPS://w3.rchland.ibm.com/~jhansen/qiwa/service/v5r3m
0/

37 http://w3.ibm.com 1.1

Attention	Refresh Screen	Field Exit	Page Up	Enter
System Request	Stop Session	Reset	Page Down	

i want an i.

© 2006 IBM Corporation

IBM System i

5250 and Portal Server

WebSphere Portal

3/13/06 13:09:19 Page 1 URL Testing LP126AB SMSGAD

Case tests
lower http://w3.rchland.ibm.com/
UPPER HTTP://W3.RCHLAND.IBM.COM/
CaMeL HTTP://w3.rchland.ibm.com/

Case test secure
lower https://w3.rchland.ibm.com/~jhansen/qiwa/service/v5r3m0/
UPPER HTTPS://w3.rchland.ibm.com/~jhansen/qiwa/service/v5r3m0/
CaMeL HTTPS://w3.rchland.ibm.com/~jhansen/qiwa/service/v5r3m0/

Case test secure
lower https://w3.rchland.ibm.com/~jhansen/qiwa/service/v5r
UPPER HTTPS://w3.rchland.ibm.com/~jhansen/qiwa/service
CaMeL HTTPS://w3.rchland.ibm.com/~jhansen/qiwa/service/v5r3m
0/

Welcome to the iSeries Access portlets - specifically developer Access customers. These portlets allow you to access informatica iSeries servers through a Web browser.

iSeries Access portlets include the following:

- 5250 portlet
 - Run commands and access full-screen 5250 character-based applications.
- Frame portlet
 - Access any of the iSeries Access for Web series iFrame portlet.
- Integrated file system (IFS) browsing portlets
 - Browse the iSeries integrated file system.
 - View, edit, upload and download files.
- Printers, printer output, and output queues portlets
 - View printer status, start and stop the writer job with a printer.
 - Hold, release, print, delete and view printer out
 - Move printer output files to another output que
 - Hold and release output queues.
- Database tables and SQL portlets
 - View database tables, add and update records.
 - View query results, customize format of results
 - Run SQL statements dynamically.
- Commands portlets
 - Run CL commands.

The iSeries Access portlets are included with iSeries Access for iSeries Access for Web product is part of the iSeries Access Pa (5722-001). For more information regarding iSeries Access, i for Web, and the iSeries Access portlets, refer to the following:

- iSeries Access
- iSeries Access for Web
- iSeries Access Portlets

Find more great portlets from the [IBM WebSphere portal site](#), the [IBM WebSphere Portal Page](#).

37 Keyboard function keys Keyboard focus 6.53

Enter	Attention	Refresh Screen	Field Exit	Page Up
System Request	Stop Session	Reset	Page Down	

i want an i.

© 2006 IBM Corporation

Things to know

Because 5250 session implemented using HTML, considerations to be aware of

- Not full-function emulator
- Not intended to replace full function emulators like PC5250, Host On Demand, etc. for purposes of "heads-down" data entry type of operations
- Does not include file transfer from session
- Do not include graphics, EHLAPPI, DDE functionality
- No direction interaction with server, so unsolicited server messages can't be received. (need to request refresh to see break messages)

Questions?

Trademarks and Disclaimers

© IBM Corporation 1994-2006. All rights reserved.

References in this document to IBM products or services do not imply that IBM intends to make them available in every country.

Trademarks of International Business Machines Corporation in the United States, other countries, or both can be found on the World Wide Web at <http://www.ibm.com/legal/copytrade.shtml>.

Intel, Intel logo, Intel Inside, Intel Inside logo, Intel Centrino, Intel Centrino logo, Celeron, Intel Xeon, Intel SpeedStep, Itanium, and Pentium are trademarks or registered trademarks of Intel Corporation or its subsidiaries in the United States and other countries.

Linux is a registered trademark of Linus Torvalds in the United States, other countries, or both.

Microsoft, Windows, Windows NT, and the Windows logo are trademarks of Microsoft Corporation in the United States, other countries, or both.

UNIX is a registered trademark of The Open Group in the United States and other countries.

Java and all Java-based trademarks are trademarks of Sun Microsystems, Inc. in the United States, other countries, or both.

Other company, product, or service names may be trademarks or service marks of others.

Information is provided "AS IS" without warranty of any kind.

The customer examples described are presented as illustrations of how those customers have used IBM products and the results they may have achieved. Actual environmental costs and performance characteristics may vary by customer.

Information concerning non-IBM products was obtained from a supplier of these products, published announcement material, or other publicly available sources and does not constitute an endorsement of such products by IBM. Sources for non-IBM list prices and performance numbers are taken from publicly available information, including vendor announcements and vendor worldwide homepages. IBM has not tested these products and cannot confirm the accuracy of performance, capability, or any other claims related to non-IBM products. Questions on the capability of non-IBM products should be addressed to the supplier of those products.

All statements regarding IBM future direction and intent are subject to change or withdrawal without notice, and represent goals and objectives only.

Some information addresses anticipated future capabilities. Such information is not intended as a definitive statement of a commitment to specific levels of performance, function or delivery schedules with respect to any future products. Such commitments are only made in IBM product announcements. The information is presented here to communicate IBM's current investment and development activities as a good faith effort to help with our customers' future planning.

Performance is based on measurements and projections using standard IBM benchmarks in a controlled environment. The actual throughput or performance that any user will experience will vary depending upon considerations such as the amount of multiprogramming in the user's job stream, the I/O configuration, the storage configuration, and the workload processed. Therefore, no assurance can be given that an individual user will achieve throughput or performance improvements equivalent to the ratios stated here.

Photographs shown may be engineering prototypes. Changes may be incorporated in production models.