



Session: 480154

# @server iSeries

## Operations Console V5R3 Enhancements and More

Marvin Levi

© Copyright IBM Corporation, 2005. All Rights Reserved.  
This publication may refer to products that are not currently  
available in your country. IBM makes no commitment to make  
available any products referred to herein.



## iSeries Operations Console V5R3 Enhancements and More

### Topics

- Operations Console quick overview
- Connectivity Options and Configuration is easier
- Requirements for Operations Console
- New property page features
- Remote Control Panel
- Console takeover and recovery
- LPAR Configuration
- Demo – Twinax convert to LAN Console if time permits

© 2005 IBM Corporation

iSeries

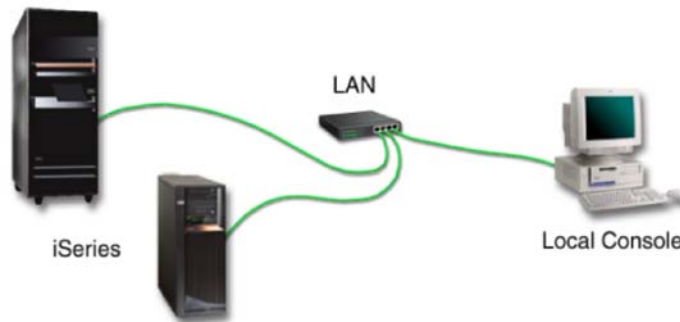
PAGE 2



## iSeries Operations Console V5R3 Enhancements

### Operations Console Overview

- Operations Console allows a personal computer (PC) to become a local or remote console to your iSeries server. This eliminates the need for a twinaxial connection and allows a system administrator to monitor/control the system(s) from another location.



## Requirements for Operations Console

- PC Operating System
  - Windows 2000 Professional
    - Recommend Service Pack 4
  - Windows 2003
  - Windows XP
    - Recommend Service Pack the latest
  - Windows 98 (not supported)
  - Windows Me(not supported)
  - Windows NT Workstation 4.0 or later, with Remote Access Service installed.
    - Requires Service Pack 6
- iSeries Access for Windows
  - Latest Service Pack available

## Requirements for Operations Console

- PC Hardware requirements

Operating System (1,2)	Operations Console PC
Windows NT 4.0	Pentium 300 MHz recommended 64 MB memory minimum (128 MB recommended)
Windows 2000/2003/XP Professional	Pentium 500 MHz (P6 or equivalent compatible microprocessor) 256 MB memory minimum

## Requirements for Operations Console

- Support cards for LAN Connectivity

Card Number	Description
2744	PC1 100 Mbps Tokenring Adapter
2838	PC1 100/10 Mbps Ethernet IOA
2849	PC1 100/10 Mbps Ethernet IOA

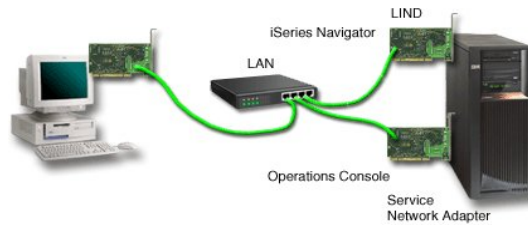
## Requirements for Operations Console

Model	LAN console card location	Operations Console async card location for the cable
170, 250	not supported	C08
720	not supported	C09
730, 740	not supported	See the Cabling information.
270	C06, second C05	C07
800, 810	C06, second C05	C07
820	C04, second C03, third C11	C06
825	Integrated Ethernet Port, (C03, C02, C01)(1)	C06
830, SB2	C04, second C06, third C10	C02
840, SB3	C04, second C06, third C10	C02
870, 890	C04, C06, C07, C08, C09	C02

Note:  
 (1) These locations will only be available if the Integrated Ethernet Port is not operational.

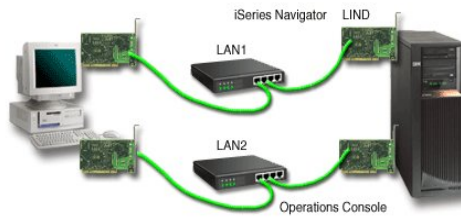
## Requirements for Operations Console

- iSeries Navigator
- XPF



## Requirements for Operations Console

- Preferred
  - iSeries Navigator
  - XPF



## iSeries Operations Console

- Configuring console is easier

Configure iSeries Operations Console - Select Configuration

Choose the configuration that best meets your console needs. Click through the choices for more details about each.

V5R2

Configurations:

- Local console directly attached to the server
- Local console directly attached with remote access allowed
- Local console on a network (LAN)
- Local console through dial-up support
- Remote console through dial-up support

A PC can dial into the iSeries server and serve as the console.

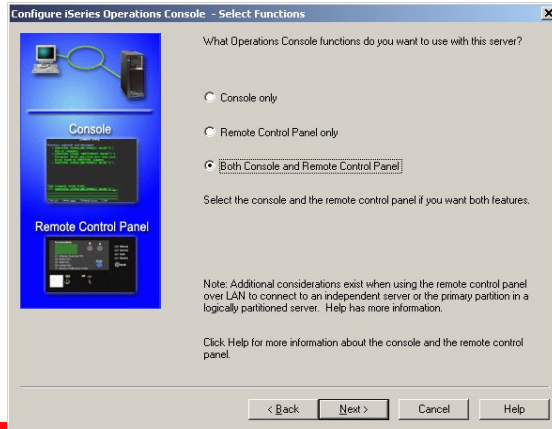
< Back Next > Cancel Help

The PC is connected directly to the iSeries server. Special cables are required for the console and control panel functions.

< Back Next > Cancel Help

## iSeries Operations Console

- Configuring console is easier/ Select Functions page removed



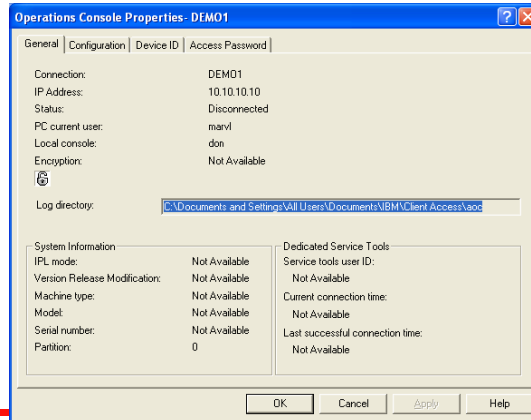
## iSeries Operations Console

- New property page features
  - Add/remove functions through property pages
  - Re-configuration wizard removed
  - LAN configurations default with Remote Control Panel
  - Direct configurations default to console only



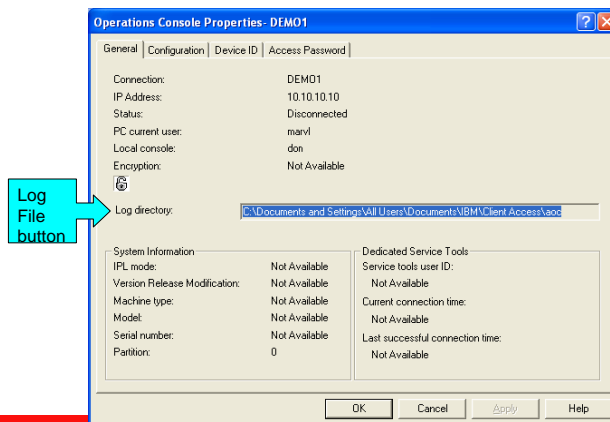
## iSeries Operations Console

- New property page features



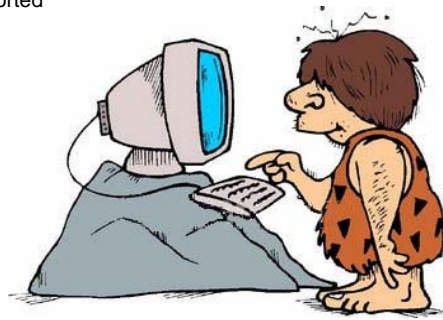
## iSeries Operations Console

- New property page features



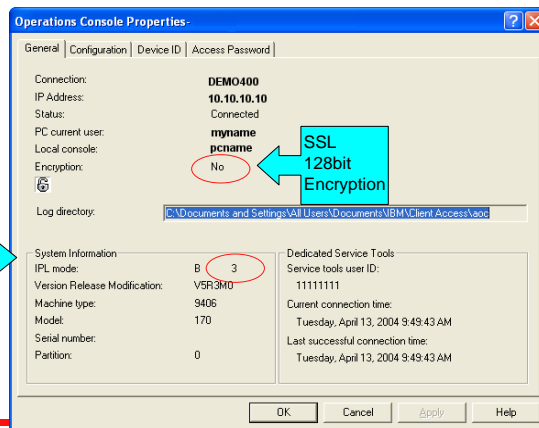
## iSeries Operations Console

- Configuring console is easier
  - Focus on configuring a connection
  - Auto detect and configure
  - Add/remove functions through property pages
  - Windows 98 and Me are not supported



## iSeries Operations Console

- New property page features



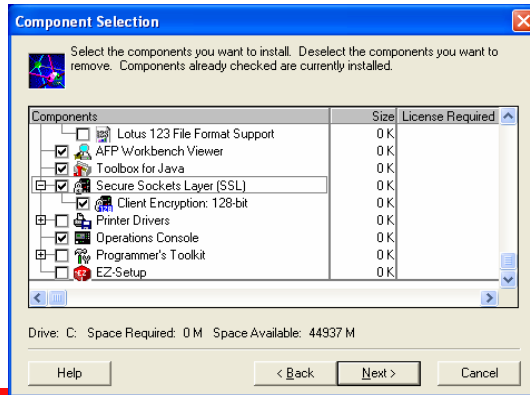
e.g. 3 indicates LAN console type

SSL 128bit Encryption



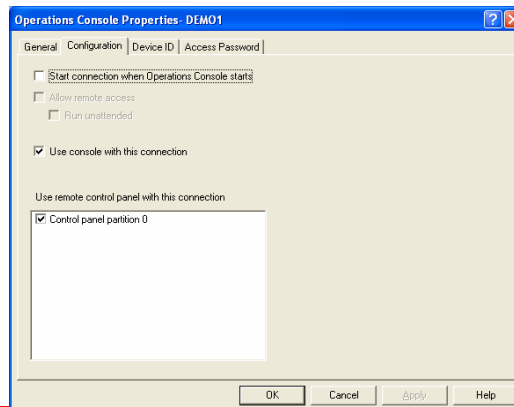
## iSeries Operations Console

- New property page features/SSL 128-bit Encryption
  - Part of iSeries Access for Windows V5R3 install



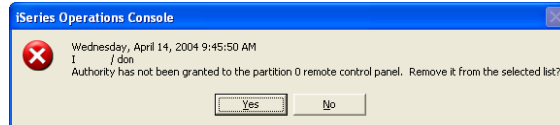
## iSeries Operations Console

- Remote Control Panel



## iSeries Operations Console

- Remote Control Panel
  - On connection authorization for RCP is verified



- Choosing Yes will also remove the message from appearing again
- The message is new, but the authorization has always been verified

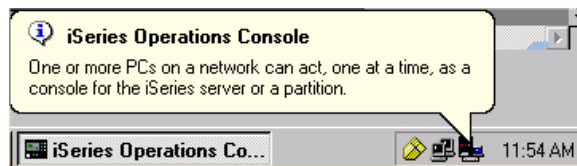
Old message



© 2005 IBM Corporation

## iSeries Operations Console

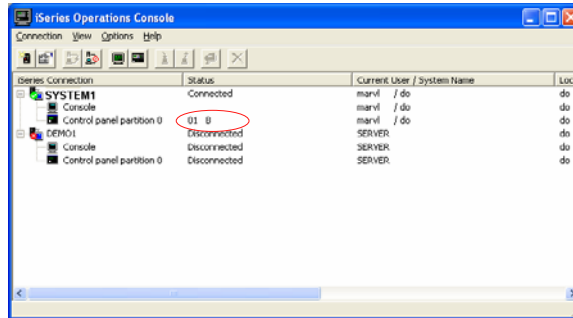
- The Operations Console icon has been added to the taskbar notification area.
- This allows Operations Console to display messages that otherwise maybe hidden behind other desktop applications.



© 2005 IBM Corporation

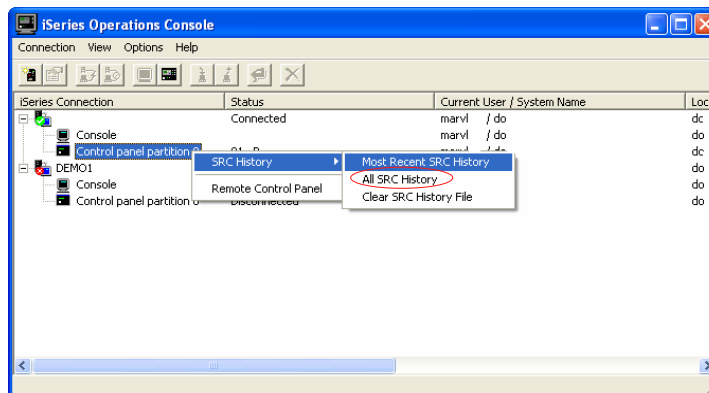
## iSeries Operations Console

- Remote Control Panel
  - Show/Hide columns
  - Move Columns
  - Improved error messages
  - System Tray Icon



## iSeries Operations Console

- Remote Control Panel
  - System Reference Codes/From the IPL time



## iSeries Operations Console

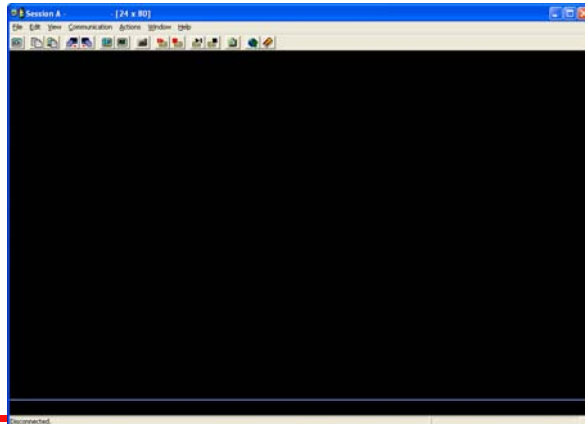
- Console takeover and recovery
  - Microsoft Winsock layer
  - Not an Alternate Console
  - Always get green on black
  - Console modes are honored
  - After a successful takeover, whether from the same device or a different device, all data sent to the console will be delivered
  - If the outage was long enough and there were many screens buffered, the screen refreshes will be rapid, but all screen data will be sent until the console is up-to-date
  - When the takeover option is turned off a console-capable device will bypass the signon screen and be taken directly to the screen showing current console status

## iSeries Operations Console

- Console takeover and recovery
- A new function consisting of control panel functions 65 and 21 has been created to aid in the recovery or debug of Operations Console problems. It will allow the user to do the following:
  - Change the console mode value.
  - Clear the associated LAN adapter's associated data used for Operations Console or the service tools server
  - Deactivate and reactivate the LAN adapter associated data used for Operations Console or the service tools server
  - Dump all the flight recorders commonly associated with Operations Console
    - This will reduce the need for main storage dumps which causes tremendous impact to the users.
- All of the above functions can also be done on an SST screen via native macro.

## iSeries Operations Console

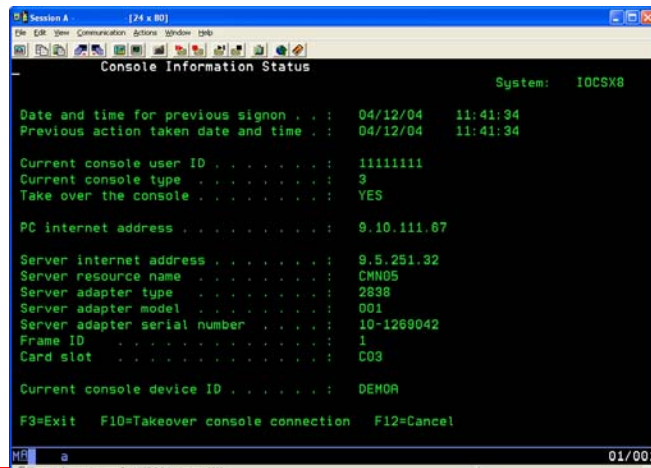
- Where is the console?



© 2005 IBM Corporation

## iSeries Operations Console Basics

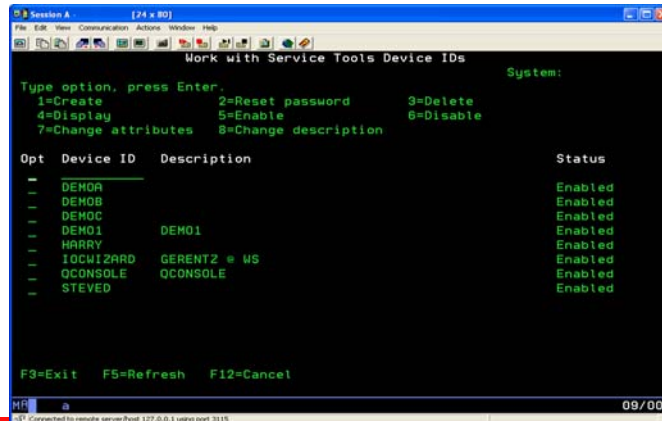
Where's the console?



© 2005 IBM Corporation

## iSeries Operations Console

- Each PC requires a Service Tools Device ID (Profile)



© 2005 IBM Corporation

## iSeries Operations Console

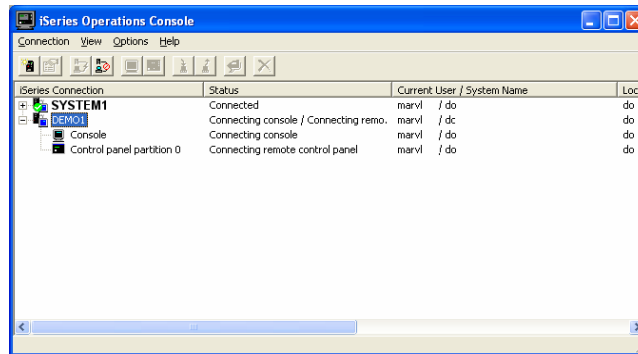
- Must remember the Access password
- The Access password can be the same on any PC
- Do not have to remember the Service Tools Device ID Password
- Should never have to re-synchronize the Service Tools Device ID Password



© 2005 IBM Corporation

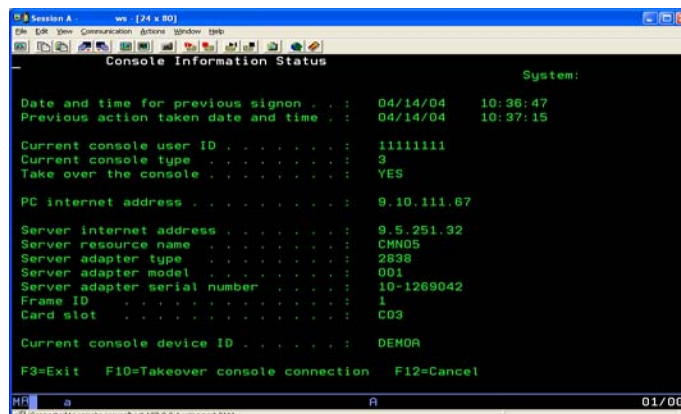
## iSeries Operations Console

- Where is the console?



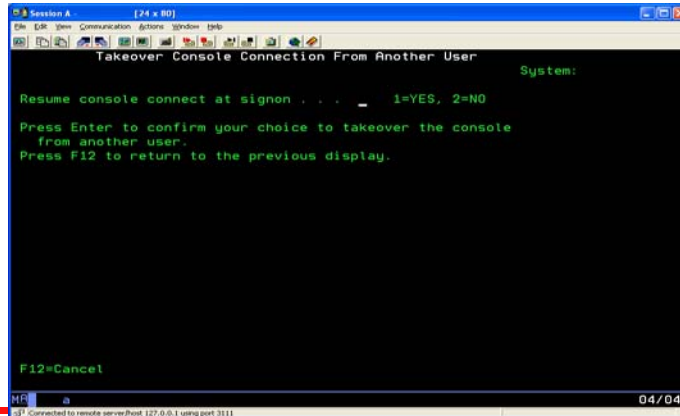
## iSeries Operations Console

- Console takeover and recovery



## iSeries Operations Console

- Console takeover and recovery



## iSeries Operations Console

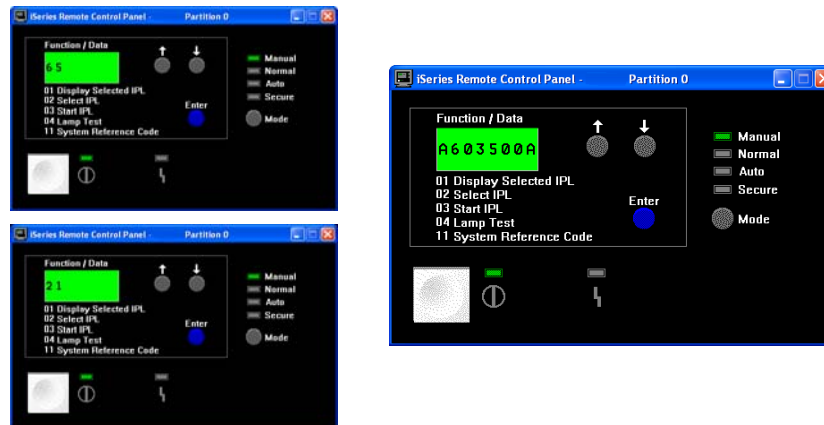
- Scenario 1 – Changing console mode from direct to LAN
  - 65 / 21 A602500A (Read mode)
  - 65 / 21 A603500B (Edit mode, increment value)
  - 21 A603500C (Set value)



## iSeries Operations Console

- Scenario 1 – Changing console mode from LAN to direct
  - 25 / 26 (CE mode, if needed)
  - 65 / 21 A603500A (Initial read back console mode value)
  - 65 / 21 A604500B (Entered edit mode and incremented value by one, if on a server supporting HMC)
  - 65 / 21 A6C3500B (increment value by one again)
  - 65 / 21 A6A3500B (increment value by one again)
  - 65 / 21 A6DD500B (increment value by one again)
  - 65 / 21 A601500B (increment value by one again)
  - 65 / 21 A602500B (increment value by one again but this is now the value we want)
  - 21 A602500C (The last 21 sets the value; causes SLIC to clean up LAN connection data, if any; activates async line)

## iSeries Operations Console

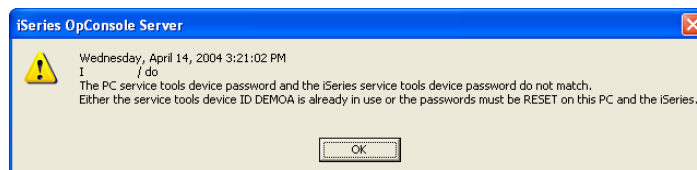


## iSeries Operations Console

- 65+21 can also assist recovery or gather data in addition to changing the console mode value
  - A6C3500B will clear the LAN adapter's data
    - This is the equivalent to doing a PF6 (clear) when on the screen showing the LAN adapter's network data) and a PF7 to store it
  - A6A3500B will cause the LAN adapter to deactivate and then reactivate
    - This is the same as doing a PF17 on the screen showing the LAN adapter's network data
  - A6DD500B will dump all Operations Console related flight recorders to vlogs (except D-mode where vlog support isn't present)
    - The vlogs will be 4A00 major code

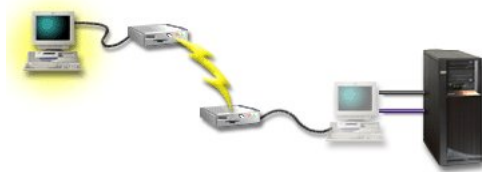
## iSeries Operations Console

- Console takeover and recovery
  - Recovery of console takes about 75 seconds
  - PC auto resynchronizes the device ID
    - In V5R3 you will get a specific error message indicating the need to reset the device ID password. Only then should you perform a reset.
  - 7-65s will reset the host device ID QCONSOLE



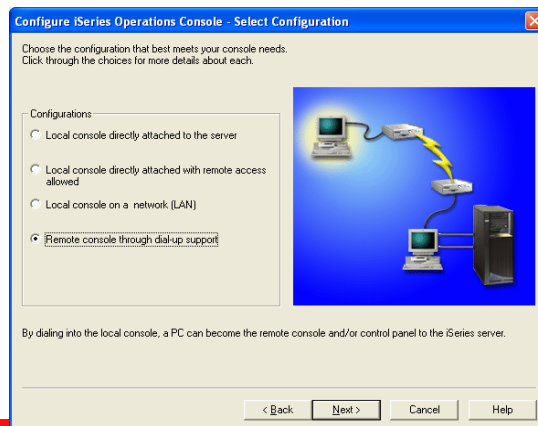
## iSeries Operations Console

- Remote Controlling System



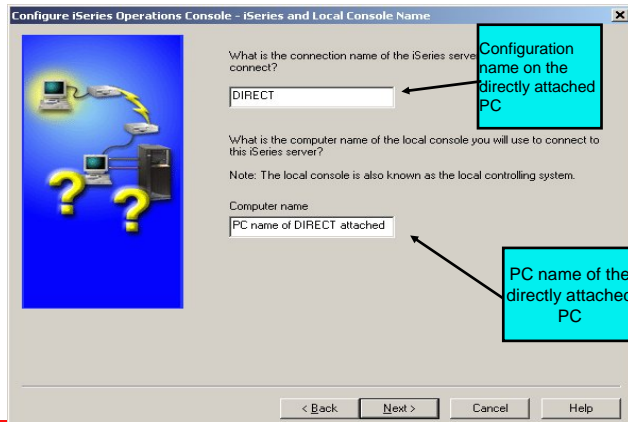
## iSeries Operations Console

- Remote Controlling System



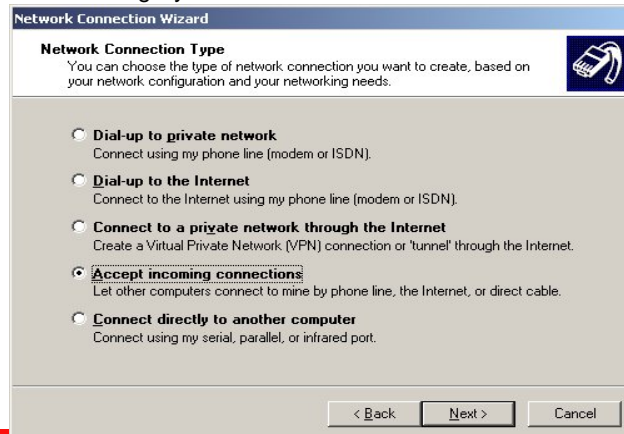
## iSeries Operations Console

- Remote Controlling System



## iSeries Operations Console

- Remote Controlling System

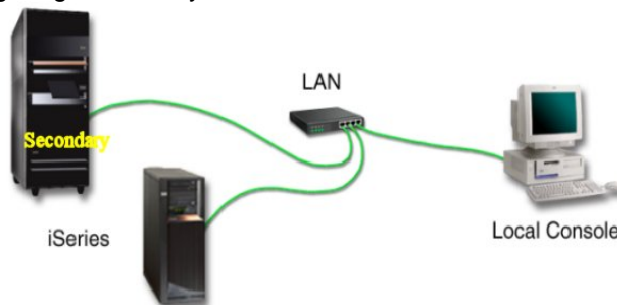


## iSeries Operations Console

- Remote Controlling System
  - Remote Controlling System to Local Controlling System (RCS to LCS)
  - IBM Desktop on Call
  - Remotely Possible
  - Virtual Network Computing (VNC)
  - PC Anywhere
  - Search Google/Directory with any of the names above to find great information

## iSeries Operations Console

- Configuring Secondary Partitions



## Configuring Secondary Partitions

- LPAR has already been created
- Create secondary
- Tag the LAN card IOP
- Tag for ECS
- Configure PC for LAN console
- Configure LAN connection on the PC that will be used for the console for the secondary
- Specify either DNS name of adapter or the IP address of LAN card (this is the information from your network administrator)
- After 'D' mode IPL (to create secondary)
- SRC's C600 4016 to C600 4031 - system looking for the console. It establishes connection and uploads IP information
- Use the ACCESS password previously configured
- UserID of 11111111 / 11111111

© 2005 IBM Corporation

## Configuring Secondary Partitions

- IPL continues. Console connected.
  - NEED to set Console Type to LAN (at DST) prior to next IPL or will NOT find console
  - After a scratch install will also have to set the Console Type to LAN
  - After a scratch install will have to reset the PC service tools device ID password

© 2005 IBM Corporation

## Configuring Secondary Partitions

- Tag the LAN card IOP for Operations Console
  - Select option 11= Work with system partitions

```

Session A - .ws - [24 x 80]
File Edit View Communication Actions Window Help
Use Dedicated Service Tools (DST)
Select one of the following:
1. Perform an IPL
2. Install the operating system
3. Work with Licensed Internal Code
4. Work with disk units
5. Work with DST environment
6. Select DST console mode
7. Start a service tool
8. Perform automatic installation of the operating system
10. Work with remote service support
11. Work with system partitions
13. Work with system security
Selection
  _
F3=Exit  F12=Cancel
    
```

© 2005 IBM Corporation

## Configuring Secondary Partitions

- Tag the LAN card IOP for Operations Console
  - Select option 7=Select console resource on the selected partition

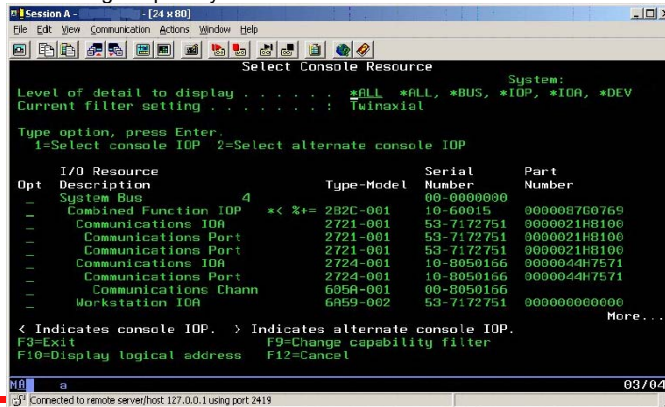
```

Session A - .ws - [24 x 80]
File Edit View Communication Actions Window Help
Work with Partition Configuration
Type option, press Enter.
7=Select console resource      8=Select alternate IPL resource
9=Select default electronic customer support resource
10=Change comm options  11=Delete  12=Change oper env  13=Change host
Partition
Option  Identifier  Name
  _      0          PRIMARY
  _      1
F3=Exit  F5=Refresh      F9=Work with shared processor pool
F10=Work with Virtual LAN configuration  F11=Work with partition status
F12=Cancel      F23=More options
    
```

© 2005 IBM Corporation

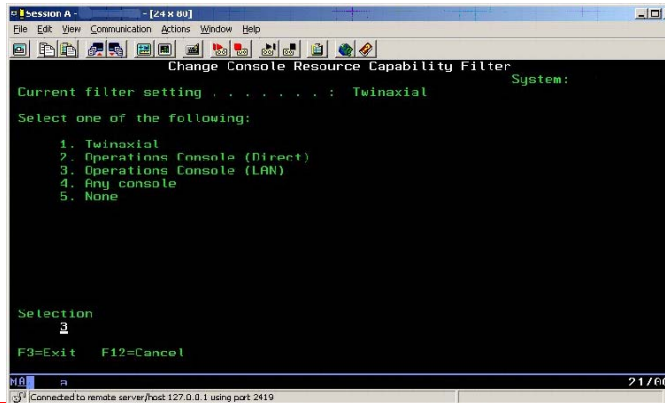
## Configuring Secondary Partitions

- Tag the LAN card IOP for Operations Console
  - Press F9=Change capability filter



## Configuring Secondary Partitions

- Select option 3. Operations Console (LAN)





## Configuring Secondary Partitions

- Enter option 1=Select console IOP on the IOP you wish to use
- < Operations Console, + ECS, > Alternate Console

```

Session A - [24 x 80]
Select Console Resource
System:
Level of detail to display . . . . . ALL *ALL, *BUS, *IOP, *IOP, *DEV
Current filter setting . . . . . Operations Console (LAN)

Type option, press Enter.
1=Select console IOP 2=Select alternate console IOP

I/O Resource Description Type-Model Serial Number Part Number
- System Bus d 00-0000000
- Combined Function IOP * < %+= 282C-001 10-60015 000008760769
- Communications IOP 2721-001 53-7172751 0000021H0100
- Communications Port 2721-001 53-7172751 0000021H0100
- Communications IOP 2724-001 10-8050166 0000044H7571
- Communications Port 2724-001 10-8050166 0000044H7571
- Communications Chann 605H-001 00-8050166
- Workstation IOP 6A59-002 53-7172751 000000000000

< Indicates console IOP. > Indicates alternate console IOP.
F9=Exit F9=Change capability filter
F10=Display logical address F12=Cancel
Already at top of area.
    
```

© 2005 IBM Corporation

## Configuring Secondary Partitions

- Tag for ECS
- Select option 9=Select default electronic customer support resource

```

Session A - [24 x 80]
Work with Partition Configuration
System:

Type option, press Enter.
7=Select console resource 8=Select alternate IPL resource
9=Select default electronic customer support resource
10=Change comp options 11=Delete 12=Change oper env 13=Change host

Partition Identifier Name
Option 0 PRIMARY
  1

F3=Exit F5=Refresh F9=Work with shared processor pool
F10=Work with Virtual LAN configuration F11=Work with partition status
F12=Cancel F23=More options
    
```

© 2005 IBM Corporation

## Configuring Secondary Partitions

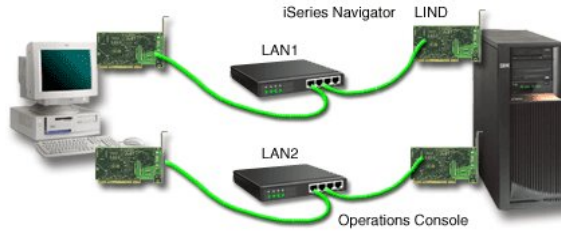
- The LAN adapter attached to the selected IOP will now be activated on the next D-Mode IPL for LIC install.
- The IP configuration must have been setup on the console PC and the console PC must be on the "local LAN" with the system.
- The LAN adapter will be able to be used for the console on the D-Mode IPL for LIC install and the first A-Mode IPL after the LIC install only.
- You must set the DST console type to Operations Console (LAN) for the console to be available on the LAN for future IPLs.
- Must also set the console type to Operations Console whenever you scratch install and must reset the PC Service Device ID password.

## Configuring Secondary Partitions

- LAN Console uses BOOTstrap Protocol (BOOTP) to configure the iSeries service IP communication stack. This IP stack configuration plus iSeries serial number is requested in the wizard setup.
- Set up PC based on your IP address information - from your network administrator - and instructions in Operations Console Setup guide.
- The iSeries system, activates the LAN card and broadcasts BOOTP requests.
- The PC replies with the information submitted during this setup.
- The iSeries then stores and uses the configuration information.
- \*\* Place the PC and iSeries on the same network (a one-time set up requirement)

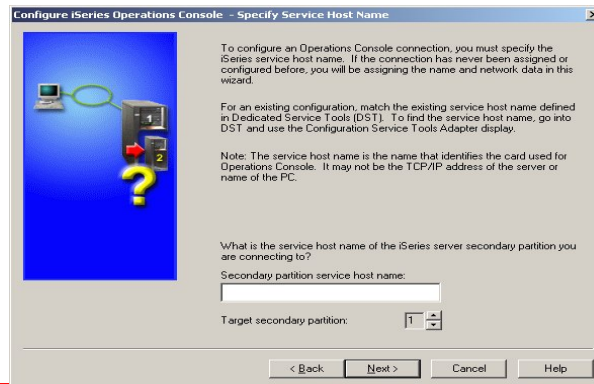
## Configuring Secondary Partitions

- Place the PC and iSeries on the same network (a one-time set up requirement)



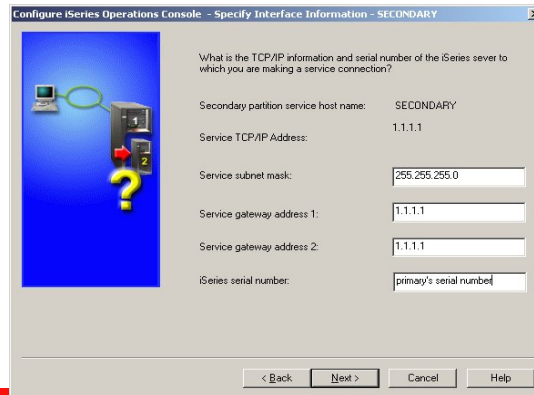
## Configuring Secondary Partitions

- Configure the PC for LAN Console
  - Specify the secondary's partition number



## Configuring Secondary Partitions

- Configure the PC for LAN Console
  - Enter the serial number of the iSeries machine and the secondary's IP information.



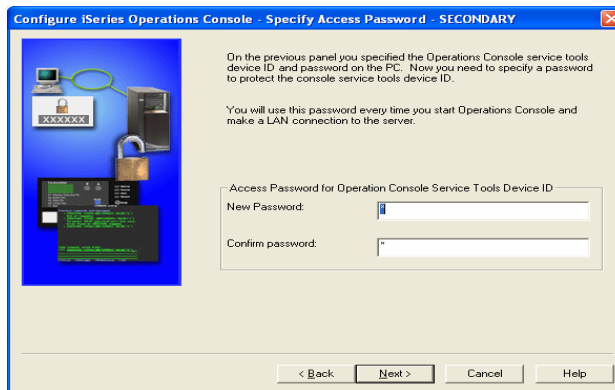
## Configuring Secondary Partitions

- Configure the PC for LAN Console
  - There will be a device ID for each secondary.



## Configuring Secondary Partitions

- Configure the PC for LAN Console
  - Enter an access password. Can be the same as other configurations.



## Migrating from Twinax to Operations Console

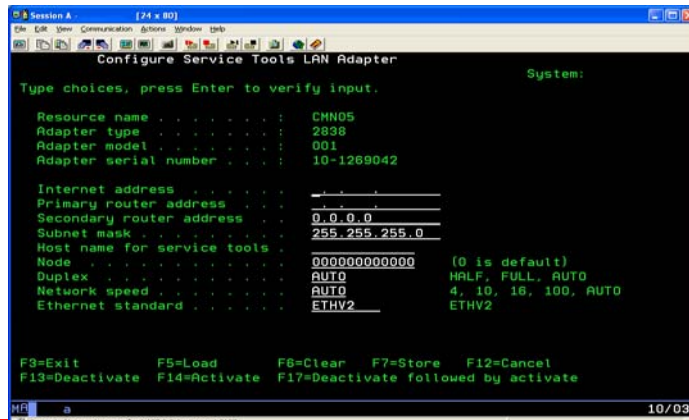
- Change console type
- From DST select 5 to Work with DST environment
- Select 2 System devices
- Select 6 Console mode
- Choose 3 for Operations console (LAN)

## Migrating from Twinax to Operations Console

- Configure LAN adapter
  - From DST select 5 to Work with DST environment
  - Select 2 System devices
  - Select 6 Console mode
  - Choose 3 for Operations console (LAN)
  - The Verify Operations Console Adapters screen will be displayed
  - From the Verify Operations Console Adapters screen press F11
  - Enter the IP Address
  - Enter the Primary and Secondary gateway
  - Enter the Subnet mask
  - F7 to store

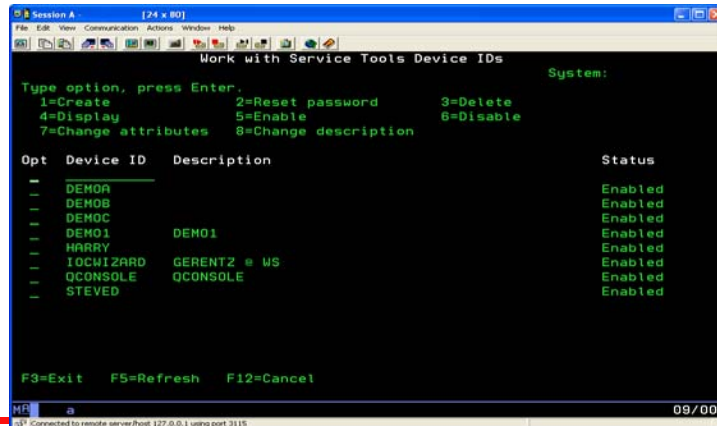
## Migrating from Twinax to Operations Console

- Configure LAN adapter



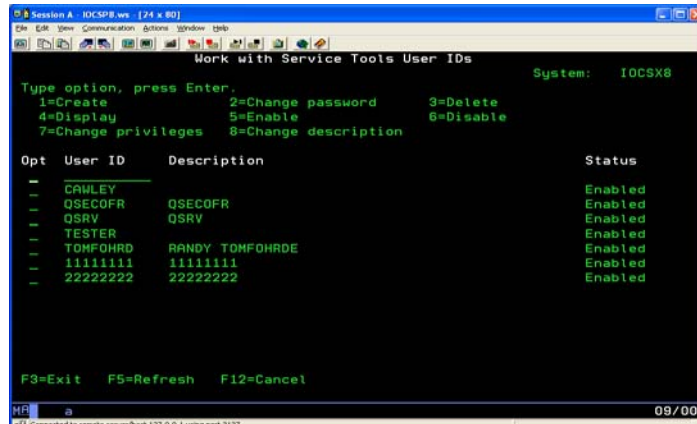
## Migrating from Twinax to Operations Console

- Create a Service Tools Device ID



## Migrating from Twinax to Operations Console

- Create a Service Tools User ID



## Migrating from Twinax to Operations Console

- LAN card placement is important (slides 8 and 9)
- Remove the Twinax cable from the iSeries machine
- Required IPL or 65/21
- Can reset the iSeries QCONSOLE password by entering 7 - 65s from the control panel

## iSeries Operations Console

- Windows XP
  - The following error message is received when limited authority is detected to access the XP key container file.



- Whoever creates the first Operations Console configuration on an XP machine will be the only user with authority to connect a console. This is because XP's security limits access to the key container file. This is true for administrators as well.
  - The key container file is used to encrypt the access and service tools device passwords.
  - CWBOPSEC executed in a DOS Window with no parameters displays help.
  - Use CWBOPSEC /adminkey to set only administrator authority or CWBOPSEC /allkey to set all authority.
- Windows 2000
  - In our testing we found that Windows 2000 security also limits access to the key container file. CWBOPSEC can be used here as well to resolve this issue.



## iSeries Operations Console

- Operations Console quick overview
- Connectivity Options and Configuring console is easier
- Requirements for Operations Console
- New property page features
- Remote Control Panel
- Console takeover and recovery demo
- LPAR Configuration
- Demo – Twinax convert to LAN Console if time permits
- Questions?

## iSeries Operations Console Intermediate Configuration

- Evaluation
  - Session ID: 409033
  - Session title: iSeries Operations Console Intermediate Configuration
  - Agenda key: 44CJ
  - Speaker: Marvin Levi

Thank you for attending!

## iSeries Operations Console Intermediate Configuration

- Trademarks The following terms are trademarks of International Business Machines Corporation in the United States, or other countries, or both:
  - Application System/400
  - AS/400
  - AS/400e
  - Client Access
  - iSeries Access for Windows
  - IBM
  - iSeries
  - Operating System/400
  - OS/400
  - 400
- Microsoft, Windows, Windows NT, Windows 2000, Windows Me, Windows 98, Windows XP, and the Windows logo are trademarks of Microsoft Corporation in the United States, other countries, or both.
- Pentium and Intel are trademarks of Intel Corporation in the United States, other countries, or both.
- Other company, product, and service names may be the trademarks or service marks of others.

## Operations Console V5R3 Enhancements and More

### *Evaluation*

- Session: 480154
- Agenda Key: 21GB
- Session Title:  
Operations Console V5R3 Enhancements and More
- Speaker: Marvin Levi



## Trademarks and Disclaimers

© IBM Corporation 1994-2003. All rights reserved.

References in this document to IBM products or services do not imply that IBM intends to make them available in every country.

The following terms are trademarks or registered trademarks of International Business Machines Corporation in the United States, other countries, or both.  
*Instruction: Refer to the following URL: <http://w3.ibm.com/legal/copywts>. Edit the list below, IBM subsidiary statement, and special attribution companies which follow so they coincide with your presentation.*

AS/400	IBM
AS/400e	IBM (logo)
eServer	iSeries
eServer	OS/400

Lotus and SmartSuite are trademarks of Lotus Development Corporation and/or IBM Corporation in the United States, other countries, or both.  
*Instruction: For a complete list of Lotus/IBM trademarks, see [www.lotus.com/lotus/information.nsf/firstpages/copyright](http://www.lotus.com/lotus/information.nsf/firstpages/copyright) and edit the above statements to coincide with your presentation.*

MMX, Pentium, and ProShare are trademarks or registered trademarks of Intel Corporation in the United States, other countries, or both.  
Microsoft and Windows NT are registered trademarks of Microsoft Corporation in the United States, other countries, or both.  
Java and all Java-based trademarks are trademarks of Sun Microsystems, Inc. in the United States, other countries, or both.  
SET and the SET Logo are trademarks owned by SET Secure Electronic Transaction LLC.  
C-bus is a trademark of Corollary, Inc. in the United States, other countries, or both.  
UNIX is a registered trademark of The Open Group in the United States and other countries.  
Other company, product or service names may be trademarks or service marks of others.

Information is provided 'AS IS' without warranty of any kind.

All customer examples described are presented as illustrations of how those customers have used IBM products and the results they may have achieved. Actual environmental costs and performance characteristics may vary by customer.

Information in this presentation concerning non-IBM products was obtained from a supplier of these products, published announcement material, or other publicly available sources and does not constitute an endorsement of such products by IBM. Sources for non-IBM list prices and performance numbers are taken from publicly available information, including vendor announcements and vendor worldwide homepages. IBM has not tested these products and cannot confirm the accuracy of performance, capability, or any other claims related to non-IBM products. Questions on the capability of non-IBM products should be addressed to the supplier of those products.

All statements regarding IBM future direction and intent are subject to change or withdrawal without notice, and represent goals and objectives only. Contact your local IBM office or IBM authorized reseller for the full text of the specific Statement of Direction.

Some information in this presentation addresses anticipated future capabilities. Such information is not intended as a definitive statement of a commitment to specific levels of performance, function or delivery schedules with respect to any future products. Such commitments are only made in IBM product announcements. The information is presented here to communicate IBM's current investment and development activities as a good faith effort to help with our customers' future planning.

Performance is based on measurements and projections using standard IBM benchmarks in a controlled environment. The actual throughput or performance that any user will experience will vary depending upon considerations such as the amount of multiprogramming in the user's job stream, the I/O configuration, the storage configuration, and the workload processed. Therefore, no assurance can be given that an individual user will achieve throughput or performance improvements equivalent to the ratios stated here.

Photographs shown are of engineering prototypes. Changes may be incorporated in production models.

© 2005 IBM Corporation

iSeries

PAGE 69

**ON DEMAND BUSINESS™**