



IBM eServer J iSeries J

Session: 402066 / 36CO

Administration of iSeries Access for Windows - Advanced Tips

Steve Mervosh
spm@us.ibm.com

© Copyright IBM Corporation, 2003. All Rights Reserved.
This publication may refer to products that are not currently available in your country. IBM makes no commitment to make available any products referred to herein.

IBM eServer iSeries



Agenda

- V5R2 changes
- iSeries Access for Windows Install/Upgrade
 - Tailored Install
- Service Packs
 - Check Service Level
- Silent Install
- Install and Service Pack Tips
- iSeries Navigator Application Administration
- iSeries Access for Windows Signon Information
 - iSeries Connection Settings
- Additional Administration Tools

© 2003 IBM Corporation

V5R2 changes

- New for V5R2 :
 - Name change -- Client Access Express to iSeries Access for Windows
 - iSeries Navigator Application Administration enhanced to control more iSeries Access for Windows functions - strategic replacement for Client Access Express policy support
 - Silent Install task tray indicator
 - Tailored Install image can include Secure Sockets Layer (SSL)
 - QIBM\ProdData\Access\Windows\Install\Image new strategic server directory symbolically linked to QIBM\ProdData\CA400\Express\Install\Image

V5R2 changes

- V5R2 is the LAST release to support:
 - Migration from 5763XD1 Client Access for Windows 95/NT
 - Installing on Windows 95, 98, Me
 - Upgrading from V4R4 Express
 - Enhancements to Client Access Express policy support - new restrictions/settings will be moved to Application Administration

iSeries Access for Windows Install/Upgrade

iSeries Access for Windows Install/Upgrade ***Media Types***

- iSeries licensed program 5722XE1 V5R1M0, V5R2M0
 - Install image placed in \QIBM\ProdData\CA400\Express\Install\Image (or \QIBM\ProdData\Access\Windows\Install\Image in V5R2 via symbolic link)
 - Installable via IBM iSeries Support for Windows Network Neighborhood (iSeries NetServer)
 - Useful for automatic upgrade and maintenance of a network of clients

iSeries Access for Windows Install/Upgrade

Tailored Install

- Limit components available for end-users to install
- Tailored Install GUI - looks like Custom Install
 - cwbinimg.bat from original installation image
 - Creates a tailored image based on a subset of the original image into the specified target directory
 - Omit components that you do not want in your tailored image
 - Component prerequisites and dependencies are enforced to ensure that a valid installable image is created

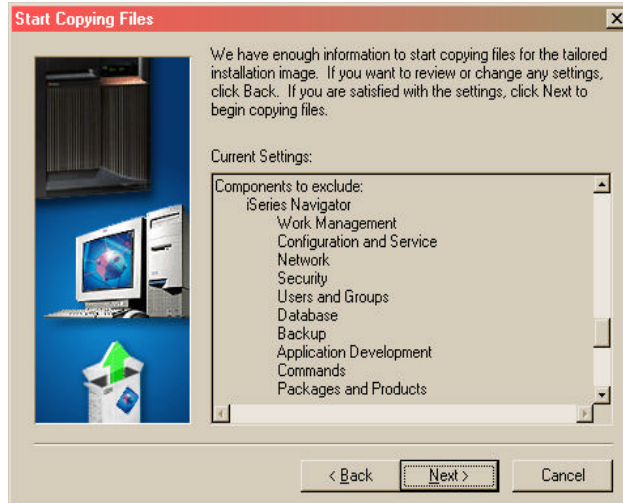
iSeries Access for Windows Install/Upgrade

Tailored Install ...

- Installs from a tailored image will dynamically build a component selection list based on the .cab file content in the installation image
- Use OS/400 authorities to restrict users or groups from install images that they should not be installing/upgrading from

iSeries Access for Windows Install/Upgrade

Tailored Install ...



iSeries Access for Windows Install/Upgrade

Installation Types

- New installation of iSeries Access for Windows
 - If done from the iSeries using iSeries NetServer - automatically sets end-user up properly for later service packs and upgrades
 - Recommend using UNC name (\\as400\QIBM\...\Install\Image\setup.exe)
 - Typical, Pc5250 User, Custom, Full (Full is useful with tailored install images)
 - If done from iSeries, can also install Secure Sockets Layer (SSL), iSeries Navigator Plug-ins

iSeries Access for Windows Install/Upgrade *Installation Types ...*

- Upgrade Install
 - From one release of iSeries Access for Windows to the next release
 - Intend to always support N-2 to N
 - Default is to upgrade to new release with same set of components
 - Can add additional components during upgrade
 - Can remove existing components during upgrade process

- Re-Install same release
 - Functionally very similar to upgrade install
 - Will install over a service pack level, returning end-user to same level as installation image

Service Packs

Service Packs

Service ...

- iSeries PTF for 5722XE1
 - SNDPTFORD (iSeries CD media shipped)
 - Internet PTF Delivery (IPTF) (iSeries CD media shipped)
<http://www-912.ibm.com/>
 - Periodically included in iSeries cumulative PTF packages
 - Strategic way to handle service for end-users - automatic Check Service Level
 - Check Service Level can also service iSeries Navigator Plug-ins, Secure Sockets Layer (SSL)
 - Use service Source Directory of \\netserver-name\QIBM to avoid assigning a persistent drive letter mapping

Service ...

The screenshot shows the 'Client Access Properties' dialog box with the 'Service' tab selected. The 'When to check service level' section includes a dropdown for 'When to check:' set to 'Periodically', a date field for 'Check service level on:' set to '05/11/2001', a spinner for 'Next check occurs in:' set to '28' days, and a spinner for 'Number of minutes to delay:' set to '1'. The 'Last checked:' field shows '04/13/2001'. The 'Install Options' section has two unchecked checkboxes: 'Perform silent installation' and 'Copy install image to PC before installing'. The 'Source Directory:' field is set to '\\COMMON1\QIBM' with a 'Browse...' button next to it. At the bottom are 'OK', 'Cancel', and 'Apply' buttons.

Service Packs

Service ...

- FTP Downloads (<http://www1.ibm.com/servers/eserver/series/access/casp.htm>)
 - Can be placed on a server (including iSeries IFS) and installed via Check Service Level
 - Don't place in the original iSeries LPP directory (... \Install\Image) because that will interfere with APYPTF
 - Quicker to obtain than PTF version, but not as integrated into the overall iSeries Access for Windows service strategy
 - Suggest using FTP download for validation testing, then obtain PTF for distribution to enterprise

Service Packs

Service ...

- FTP Downloads (<http://www1.ibm.com/servers/eserver/series/access/casp.htm>)
 - Can download a large single .exe or save transmittal time by only downloading the service pack files for the iSeries Access for Windows components that your organization uses
 - PTFFORM.EXE in FTP /subcomps directory can be used to overlay a tailored install image - identical to set of files in the PTF version

Service ...

Latest Service Packs for Supported Releases

- To see service packs for every release, refer to [Service Pack History for All Releases](#).
- For "Other methods for acquiring service packs" (besides the FTP downloads on this page), [click here](#).
- For support information on Client Access and the Microsoft Windows operating systems, [click here](#).

iSeries Access for Windows (Client Access Express) (5722-XE1/5769-XE1) Release Level	Latest Service Pack PTF Number	Server Maintenance	Date PTF was Available	Installed File Date	Target for Next Service Pack
V5R2M0	SI06631	Refer to Server Notes	December 4, 2002	08/03/02	February 21, 2003
V5R1M0	SI06804	Refer to Server Notes	December 4, 2002	05/05/01	May 9, 2003
V4R5M0	SF67276		October 14, 2002	12/06/99	None planned

Service ...

ftp://ftp.software.ibm.com/as400/products/clientaccess/win32/v5r2m0/servicepack/si06631/

subcomps	tailored	Downloads.txt	readmesp.txt	SI06631.EXE
----------	----------	---------------	--------------	-------------

User: Anonymous Internet

Silent Install

Silent Install

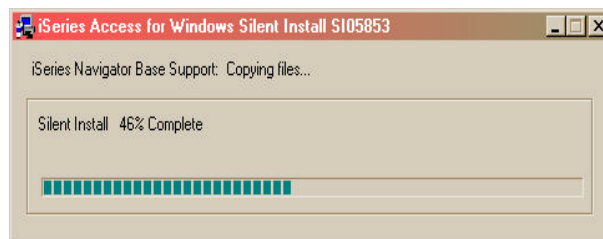
- Install iSeries Access for Windows or service packs to PC without end-users having to respond to prompts
- Also a way to restrict the set of initial components that an end-user receives
- Can be used for upgrades, selective setup, and service packs.
Upgrades and service packs should launch setup.exe from the install source.
Selective Setup should launch setup.exe from the PC's ...\\Client Access directory

Silent Install

- You perform the desired type of install on your PC, recording installation choices into install scripts (.iss files)
For example, setup.exe -r -f1C:\MyDir\v5r1v5r2upg.iss
- Schedule or run setup.exe on the end-user PC's with the proper parameters specifying the response file location (or use CheckService Level)
i.e., setup.exe -s -f1\\iSeries\Express\Response\v5r1v5r2upg.iss -f2C:\Temp\v5r1v5r2upg.log
- Log file tracks installation results (you can specify location/name of log file)
- For detailed information on silent installs see InfoCenter:
<http://publib.boulder.ibm.com/iseries/v5r2/ic2924/index.htm?info/rzaii/rzaisilentinstall.htm>

Silent Install

- Silent Install indicator (new for V5R2)
 - Appears in task tray on end-user's PC during silent install
 - Silent install failure leaves indicator active, double-clicking indicator shows failure point



Silent Install

- Most silent install errors involve a dialog out of order from what was recorded (-12 return code in silent log)
 - The best way to debug this is to start a manual install on the failing PC and proceed through the install wizard panels until the confirm panel prior to file transfers
 - The majority of the dialog errors occur prior to the confirmation panel
 - See if any unexpected dialogs appear that were not anticipated during recording
- Silent.txt file in the ...\\Client Access directory lists the components installed silently and successfully

Silent Install

Check Service Level

- Using Check Service Level for silent installs of service packs and upgrades eliminates the need for confusing command-line parameters - but does require specific names for response files
- SLTSP.ISS - for service packs (This file must reside in the same directory as the service pack image)
- SLTUP.ISS - for upgrades (This file must reside in the same directory as the upgrade image)
- If rebooting automatically, consider using SCHEDCHECK parameter on `cwbackver.exe` and schedule during the middle of night. Look in online iSeries Access for Windows User's Guide index for `cwbackver` for more information on the SCHEDCHECK parameter
- If not rebooting automatically, Check Service Level will come out of silent mode and prompt user for reboot

Silent Install

The screenshot shows the 'Client Access Properties' dialog box with the 'Service' tab selected. The 'When to check service level' section includes a dropdown for 'When to check' set to 'Periodically', a date field for 'Check service level on' set to '02/08/00', a spinner for 'Next check occurs in' set to '28' days, and a spinner for 'Number of minutes to delay' set to '1'. The 'Install Options' section has a checked checkbox for 'Perform silent installation' and an unchecked checkbox for 'Copy install image to PC before installing'. The 'Source Directory' is set to '\\common1\qibm' with a 'Browse...' button next to it. At the bottom are 'OK', 'Cancel', and 'Apply' buttons.

Install and Service Pack Tips

Install and Service Pack Tips

Tips

- Merged install image eliminates the need for an extra reboot
 - Roll out new clients from merged image and get new release and latest service pack in one step
- Save disk space for service pack archive
 - If a service pack has been well-tested, and you are confident in it, you can have your end-users install it without enabling service pack uninstall. Then they will not have a \Archive directory containing files from the previous service level.
 - RMVPTF and reinstall from install image to get back to prior service level if necessary.

Install and Service Pack Tips

Tips ...

- Bypass administrator authority requirement on Windows NT/2000/XP
 - Required by Windows API's used to handle locked file replacements
 - Check Service Level can be invoked via a scheduler running under administrator authority to install service packs or upgrades

Install and Service Pack Tips

Tips ...

- Incoming Remote Command component of iSeries Access for Windows can be used for silent release upgrades or silent service pack installs
 - Start service on NT/2000/XP client
 - Specify to log on as Local System Account to satisfy Administrator authority restriction needed for install
 - No need to "Allow Service To Interact With Desktop" for a silent upgrade or service pack install
 - RUNRMTCMD on iSeries specifying setup.exe/setupsp.bat and user id/password of Administrator account on PC

```
RUNRMTCMD CMD('w:\proddata\Access\Windows\install\image\setupsp.bat -s -f1\myserver\silentshare\slstsp.iss')
RMTLOCNAME(PCNAME *IP) RMTUSER(PCUSER) RMTPWD(PCPASSWD)
```
 - REXEC from a TCP/IP client can also be used to submit setup.exe

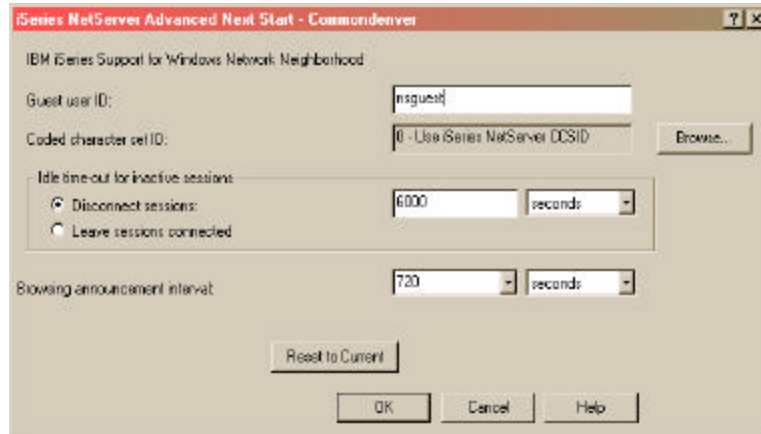
Install and Service Pack Tips

Tips ...

- Keep end-users from installing a service pack until you are ready
 - Text file SP.TXT placed in the service pack image directory can prevent anyone from installing the service pack until you are ready
 - 'N' as the 1st character in the file prevents install
 - 'Y' or no SP.TXT file at all will allow the install
 - Second text line can contain a message to users that will appear during Check Service Level
 - Same method used to prevent all end-users from upgrading via Check Service Level to a new release
 - Additional control values for a merged image:
 - 'U' allows an upgrade, but stops a service pack
 - 'S' allows a service pack, but stops an upgrade
 - Documented in User's Guide - look in Index for 'SP'

Install and Service Pack Tips

- iSeries NetServer Guest user profile - for users that normally would not have access to this iSeries - but that you would like to have install service packs



Install and Service Pack Tips

Tailored Install

- APYPTF will not affect a tailored image
PTFFORM.EXE in FTP /subcomps directory can be used to overlay a tailored install image - identical to set of files in the PTF version.

Or tailor the install again every 4 or 5 months after APYPTF of service pack.
- Secure Sockets Layer (SSL) component can be included with the tailored install. Useful for remote users installing from CD - to be able to have a secure connection with SSL the first time they connect to iSeries (new for V5R2)

Application Administration

Application Administration Overview

- Part of iSeries Navigator - separately installable component
- iSeries-based solution for restricting iSeries Navigator and iSeries Access for Windows - *SECADM authority required on iSeries to manage Application Administration settings
 - ◆ *ALLOBJ required for some Advanced Settings
- Can restrict iSeries Navigator functions against a particular iSeries
- Can restrict portions of iSeries Access for Windows and set configuration values similar to Client Access Express policy support
- Easy to use interface

Application Administration Overview ...

- Application Administration settings are stored on the iSeries and associated with the user profile (*USRPRF) or other iSeries database files.
 - ◆ Can be set up differently for each iSeries
 - ◆ Users get the same access to a particular iSeries regardless of which PC they use (including Win95/98 vs WinNT/2000)
 - ◆ The iSeries userid determines access rights - in cases where the PC userid differs from the iSeries userid
- iSeries Access for Windows/iSeries Navigator software calls low-level AppAdmin functions to determine if a particular function can be performed or not.

Application Administration Overview ...

- iSeries Navigator is enabled for control
 - ◆ All high level functions are controllable
 - ◆ Management Central functions can also be controlled
- iSeries Access for Windows is enabled for control
 - ◆ Pc5250
 - ◆ Data Transfer
 - ◆ ODBC
 - ◆ OLE DB
 - ◆ Remote Program Calls
 - ◆ iSeries Access for Windows/ iSeries Navigator commands

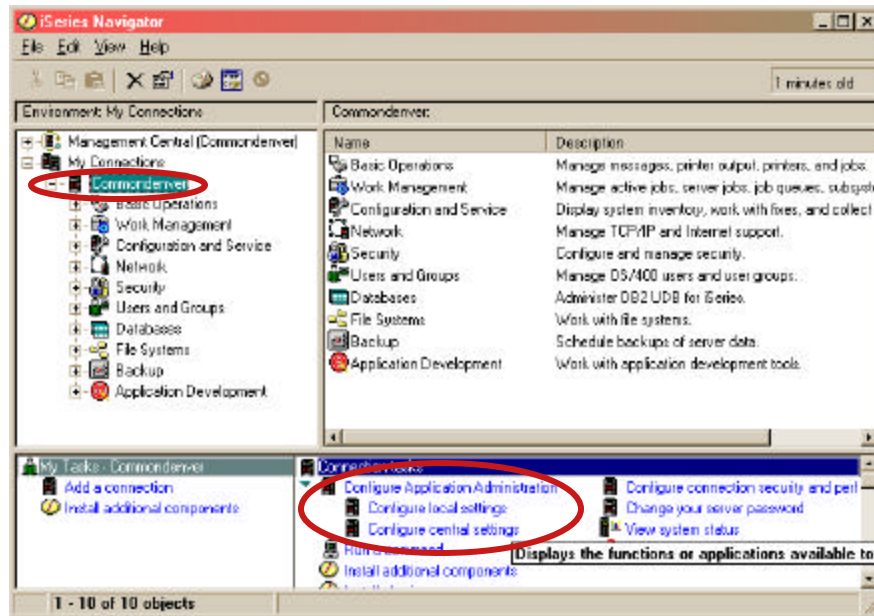
Application Administration Overview ...

- Local Settings represent iSeries Navigator on/off restrictions
 - ◆ Same as what was in V5R1
 - ◆ Resynched every time iSeries Navigator is started to a particular iSeries
 - ◆ Also include same limited set of iSeries Access for Windows restrictions that were in V5R1

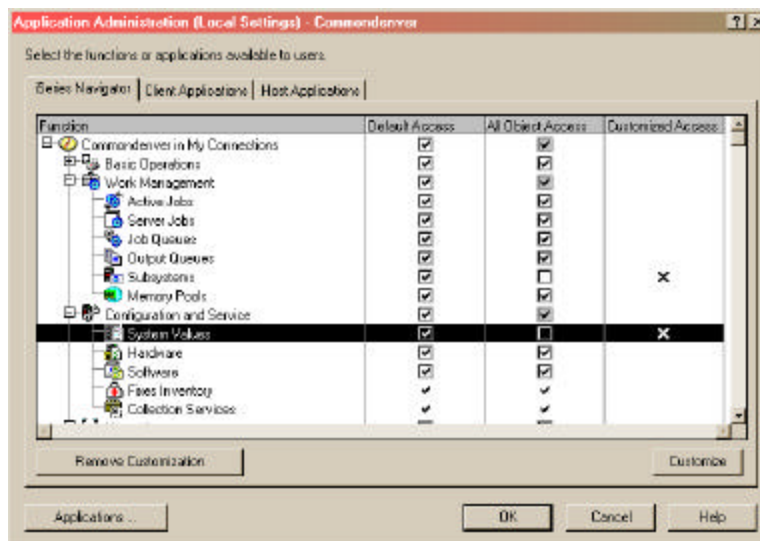
Application Administration Overview ...

- Central Settings are new for V5R2
 - ◆ Same settings apply to all iSeries connections
 - ◆ Control iSeries Access for Windows on/off restrictions (same set as Local Settings plus many more)
 - ◆ Also supports Advanced Settings that can define configuration values for Connection-related information
 - ◆ Restrictions/settings downloaded from an Administration System on a user-specified Scan Frequency
 - ◆ Mandated or suggested (default but can be changed) values
 - ◆ Similar to values controlled by Client Access Express policy support

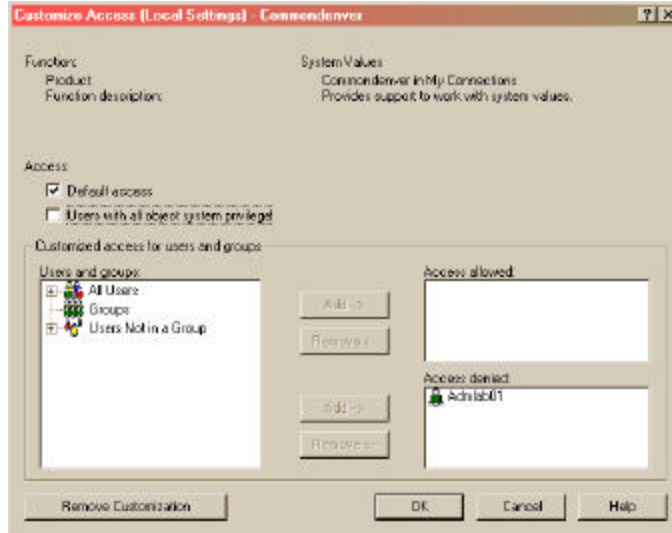
Application Administration



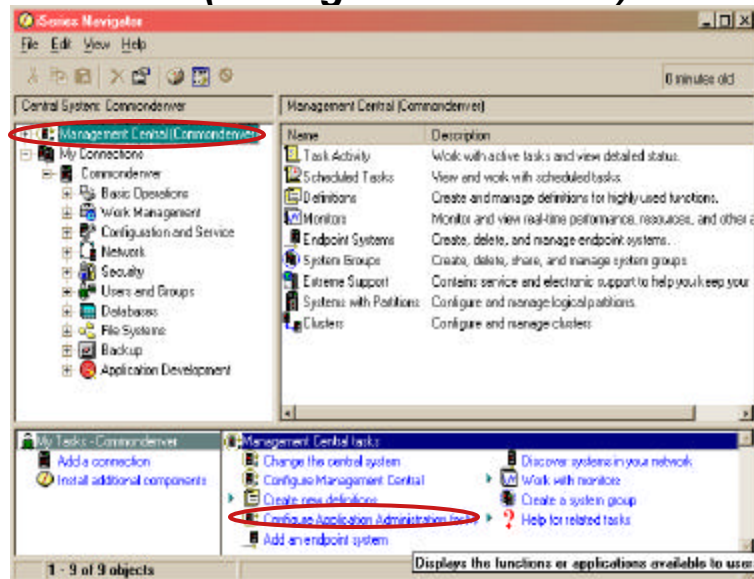
Application Administration User Interface (Local Settings - iSeries Navigator)



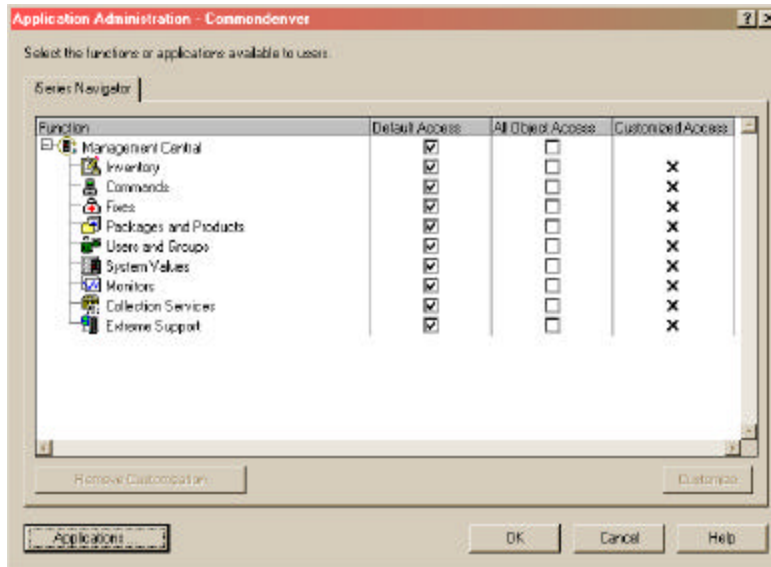
Application Administration User Interface (Local Settings - iSeries Navigator)



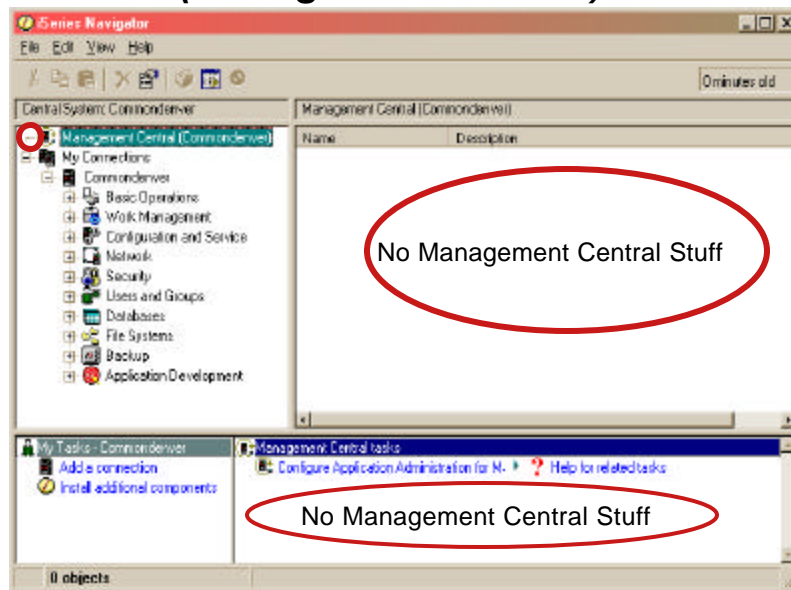
Application Administration User Interface (Management Central)



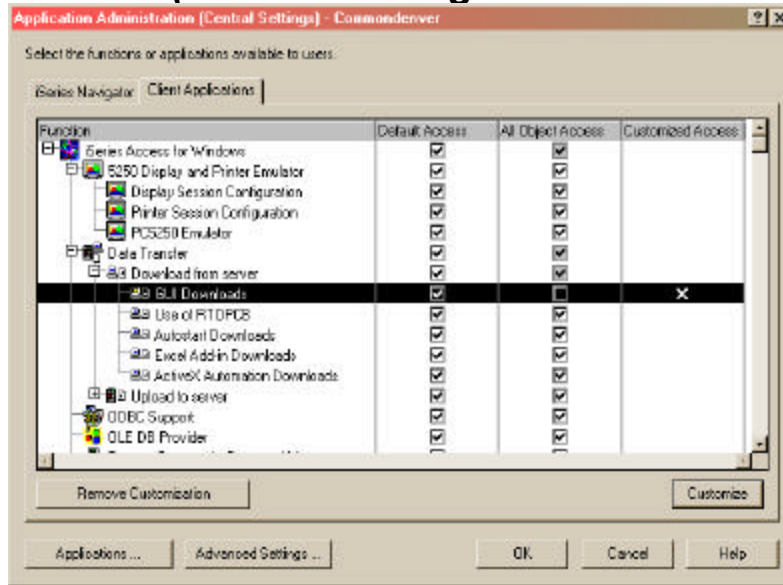
Application Administration User Interface (Management Central)



Application Administration User Interface (Management Central)



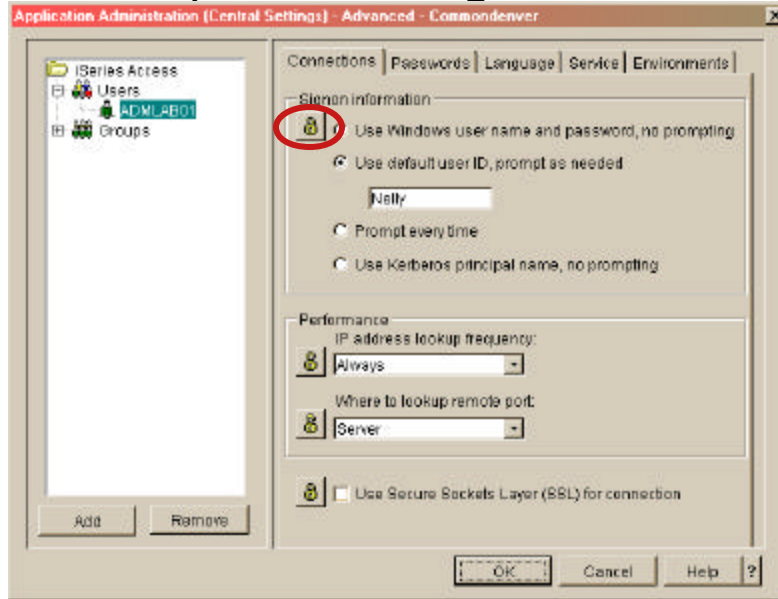
Application Administration User Interface (Central Settings - iSeries Access)



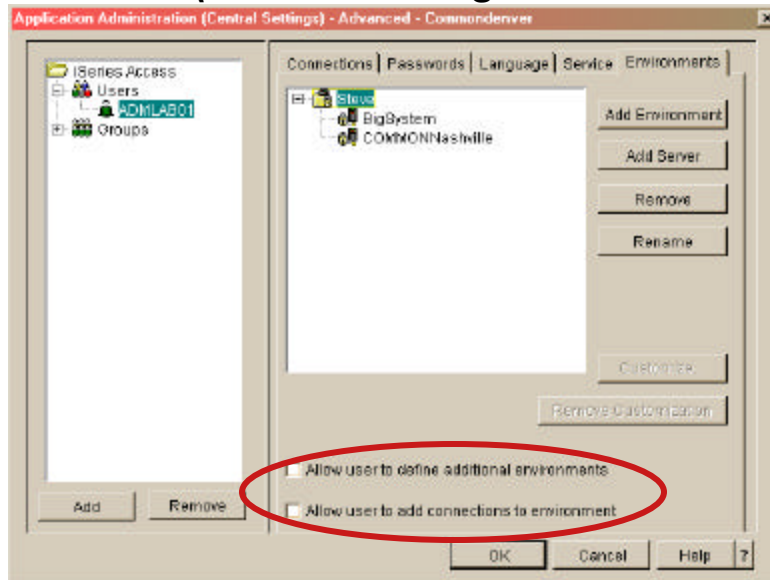
Application Administration User Interface (Central Settings - iSeries Access)



Application Administration User Interface (Central Settings - Advanced Settings)

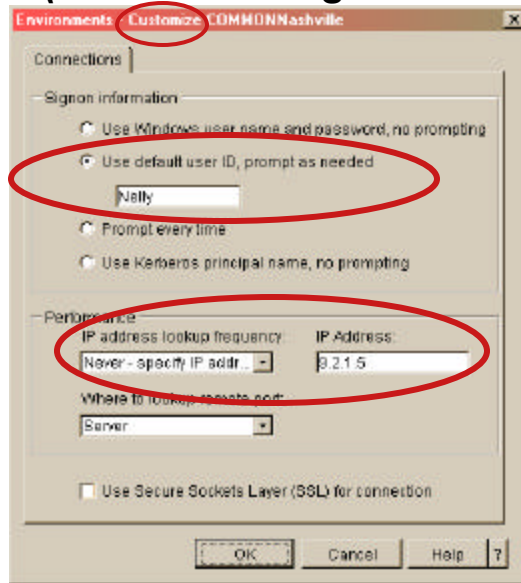


Application Administration User Interface (Central Settings - Advanced Settings)



Application Administration

User Interface (Central Settings - Advanced Settings)



Signon Information

Signon Information Overview

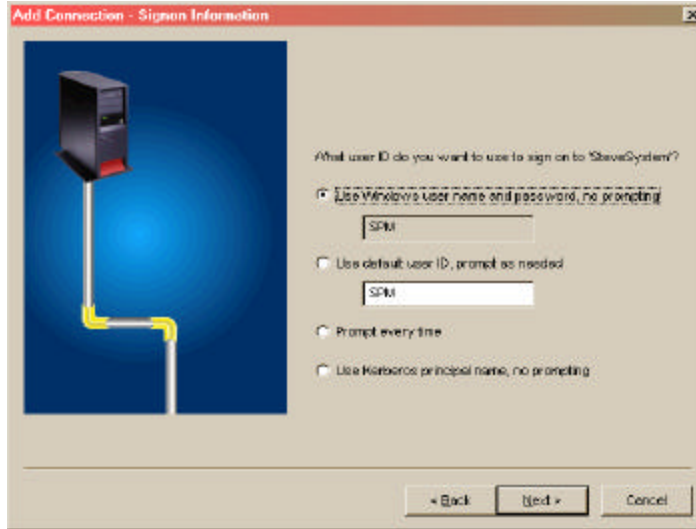
- Connections and signon information can be defined via iSeries Navigator (subset that resides within iSeries Access for Windows Required Programs component)
- A previously undefined connection will be configured dynamically when a iSeries Access for Windows function references an iSeries TCP/IP name - signon information for that connection can be defined then, and will be retained within the iSeries Navigator connections list
- A connection and its signon information can be specified via the CWBCFG command-line utility

Signon Information Overview ...

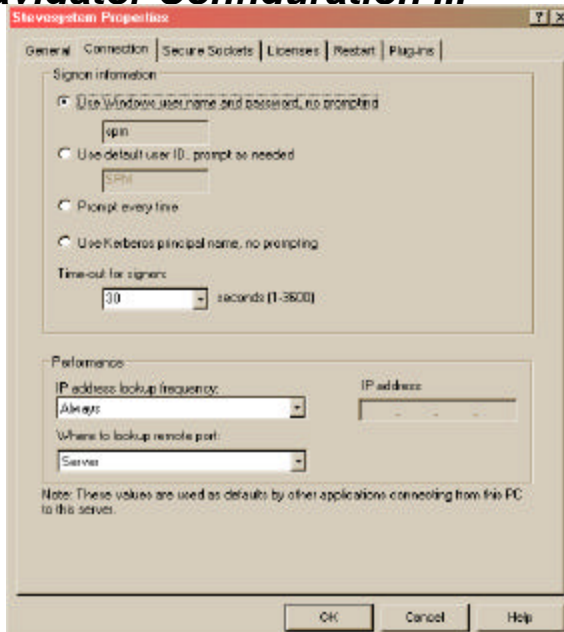
Three signon types supported - can use a different signon method for each iSeries connection if desired

- Use Windows user name and password, no prompting
 - Windows user name/password must conform to iSeries rules
 - Signon information in synch between PC and iSeries works best for iSeries NetServer
- Use default user ID, prompt as needed
 - Uses password in Windows cache if one found that pertains to user ID
- Prompt every time
 - Every application within iSeries Access for Windows will prompt for a signon when it needs to establish a connection

Signon Information iSeries Navigator Configuration



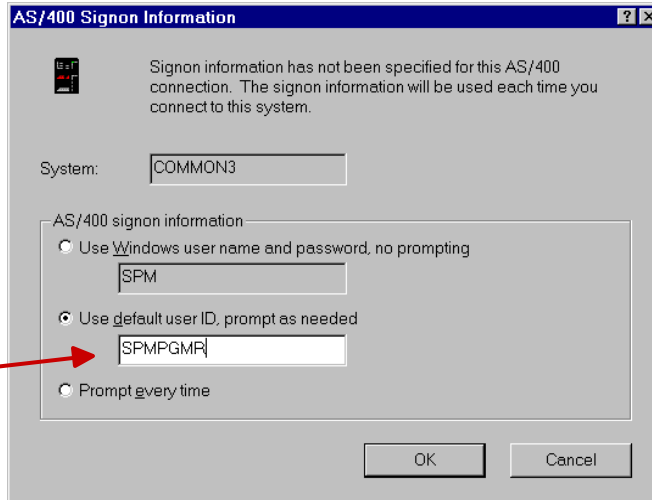
Signon Information iSeries Navigator Configuration ...



Signon Information *Dynamic connection*

- iSeries system not previously configured
- This screen presented first time you connect to this iSeries, via Pc5250 for example
- All other applications use this setting
- Can change through iSeries Navigator system properties

Uses password in short-term cache



Signon Information *CWBLOGON command*

Use to connect to an iSeries without being prompted for Userid or Password

- Add cwblogon.exe program to Windows start-up folder
 - Simulates persistent password caching (ie, remembered across restarts)

Useful on NT/2000 where Windows password cache not provided

Password in clear text - use appropriate security measures

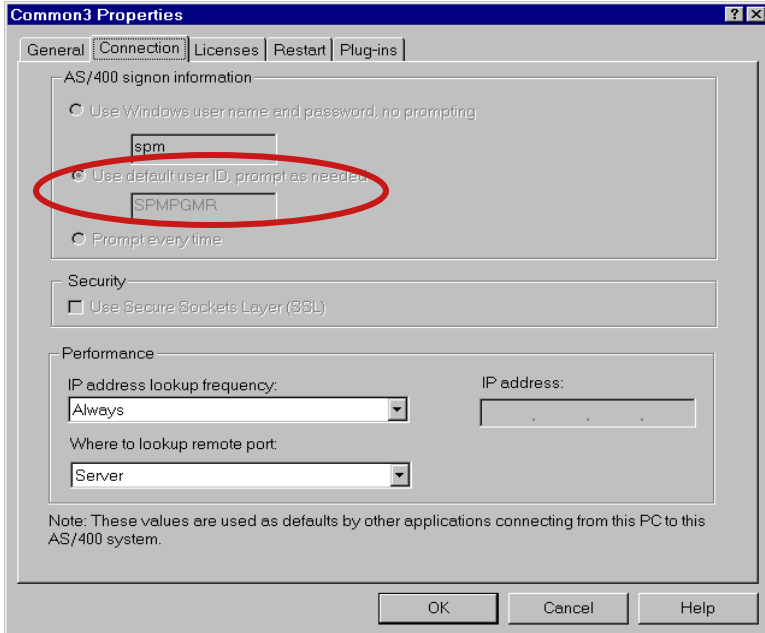
Documented in User's Guide



CWBLOGON
system /u userid /p password



Signon Information Application Administration



Additional Administration Tools

Additional Administration Tools

CWBCFG

- Useful for creating/replacing connection configuration information on a per-user basis
- Supported on Windows NT/Windows 2000/XP only
- MS-DOS command-line interface
- Useful for setting/replacing TCP/IP address
- Can also set/replace default user logon behavior
- Documented in User's Guide

Additional Administration Tools

CWBACK/CWBREST

CWBACK

- Enables you to save (backup) an iSeries Access for Windows configuration. If you want to set up users (or groups of users) with similar configurations, you could create a configuration and then save it with CWBACK.
 - ◆ All environment/connection information
 - ◆ Connection signon and performance information
 - ◆ Password expiration/caching settings
 - ◆ Check Service Level service properties
 - ◆ License release timeout value

Documented in User's Guide

Additional Administration Tools

CWBACK/CWBREST ...

CWBREST

- Enables you to restore a previously-saved iSeries Access for Windows configuration. iSeries Access for Windows users could use CWBREST to use the configuration you wish them to have

Documented in User's Guide

Additional Administration Tools

CWBENV

CWBENV

- Export/Import an environment's associated connection information
- Similar to CWBACK/CWBREST, but only deals with a single environment
- No iSeries Access for Windows Properties information exported/imported

Documented in User's Guide

Agenda

- V5R2 changes
- iSeries Access for Windows Install/Upgrade
 - Tailored Install
- Service Packs
 - Check Service Level
- Silent Install
- Install and Service Pack Tips
- iSeries Navigator Application Administration
- iSeries Access for Windows Signon Information
 - iSeries Connection Settings
- Additional Administration Tools

Trademarks and Disclaimers

© IBM Corporation 1994-2003. All rights reserved.
References in this document to IBM products or services do not imply that IBM intends to make them available in every country.

The following terms are trademarks or registered trademarks of International Business Machines Corporation in the United States, other countries, or both:

AS/400	IBM
AS/400e	IBM (logo)
eServer	iSeries
	OS/400

Lotus and SmartSuite are trademarks of Lotus Development Corporation and/or IBM Corporation in the United States, other countries, or both.

MMX, Pentium, and ProShare are trademarks or registered trademarks of Intel Corporation in the United States, other countries, or both.
Microsoft and Windows NT are registered trademarks of Microsoft Corporation in the United States, other countries, or both.

InstallShield is a trademark of InstallShield Software Corporation.
Java and all Java-based trademarks are trademarks of Sun Microsystems, Inc. in the United States, other countries, or both.

SET and the SET Logo are trademarks owned by SET Secure Electronic Transaction LLC.
C-bus is a trademark of Corollary, Inc. in the United States, other countries, or both.
UNIX is a registered trademark of The Open Group in the United States and other countries.
Other company, product or service names may be trademarks or service marks of others.

Information is provided "AS IS" without warranty of any kind.

All customer examples described are presented as illustrations of how those customers have used IBM products and the results they may have achieved. Actual environmental costs and performance characteristics may vary by customer.

Information in this presentation concerning non-IBM products was obtained from a supplier of these products, published announcement material, or other publicly available sources and does not constitute an endorsement of such products by IBM. Sources for non-IBM list prices and performance numbers are taken from publicly available information, including vendor announcements and vendor worldwide homepages. IBM has not tested these products and cannot confirm the accuracy of performance, capability, or any other claims related to non-IBM products. Questions on the capability of non-IBM products should be addressed to the supplier of those products.

All statements regarding IBM future direction and intent are subject to change or withdrawal without notice, and represent goals and objectives only. Contact your local IBM office or IBM authorized reseller for the full text of the specific Statement of Direction.

Some information in this presentation addresses anticipated future capabilities. Such information is not intended as a definitive statement of a commitment to specific levels of performance, function or delivery schedules with respect to any future products. Such commitments are only made in IBM product announcements. The information is presented here to communicate IBM's current investment and development activities as a good faith effort to help with our customers' future planning.

Performance is based on measurements and projections using standard IBM benchmarks in a controlled environment. The actual throughput or performance that any user will experience will vary depending upon considerations such as the amount of multiprogramming in the user's job stream, the I/O configuration, the storage configuration, and the workload processed. Therefore, no assurance can be given that an individual user will achieve throughput or performance improvements equivalent to the ratios stated here.

Photographs shown are of engineering prototypes. Changes may be incorporated in production models.