



IBM

# ***OPEN** for Business*

*Open Computing for an On Demand world*

Doug McGuire, Linux Sales Executive  
Strategic Growth Businesses, Americas  
[dmcguire@us.ibm.com](mailto:dmcguire@us.ibm.com)



# On Demand Influences

**Real Time**

**Inventory Turns**

**Access**



**Best Price & Now**

**Market Volatility**

**Hyper Competition**

# Advancing Technology

What if ...

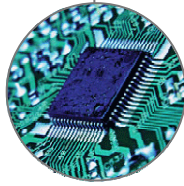
... everything is connected and intelligent?

... networking and transactions are inexpensive?

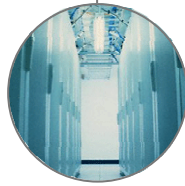
... computing power is unlimited?



↑ Adoption of open standards



↑ Processor speed



↑ Storage



↑ Bandwidth



↑ Number of networked devices



↓ Interaction costs

# The road to On Demand is via Open Computing

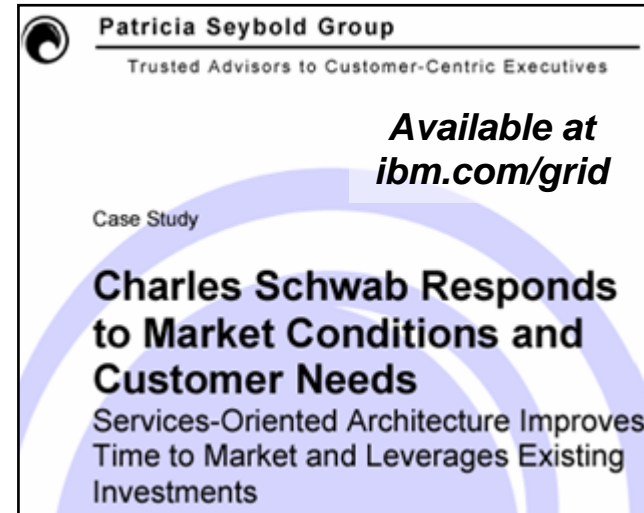




# Charles Schwab

## *Internally Change Business Processes*

- **Challenge:**
  - Reduce the processing time on an existing wealth management application
- **Solution:**
  - IBM eServer xSeries servers running Red Hat Linux and the Globus Toolkit v3.0
  - IBM Research and IBM Business Consulting Services
  - Server allocation for WebSphere Application Server
- **Benefits:**
  - Significantly reduced processing time
  - Planning to explore leveraging Grid computing into other areas
  - Potential to increase customer satisfaction by responding to inquiries at a faster pace
  - Potential to enable Schwab to provide more robust wealth management applications



Patricia Seybold Group  
Trusted Advisors to Customer-Centric Executives

Available at  
[ibm.com/grid](http://ibm.com/grid)

Case Study

**Charles Schwab Responds to Market Conditions and Customer Needs**

Services-Oriented Architecture Improves Time to Market and Leverages Existing Investments



# *Linux*

***Freedom to Choose***  
***Freedom to Innovate***



*open*

**“Linux will do for applications  
what the Internet did for networks.”**

*Irving Wladawsky-Berger*

# Cendant Travel Distribution Services

## ■ Challenge

- Existing proprietary UNIX environment was becoming increasingly expensive and difficult to run and maintain

## ■ Solution

- Port mission critical “Fares” application from proprietary UNIX to Linux
- Red Hat Enterprise Linux and IBM WebSphere
- IBM xSeries and IBM BladeCenter servers

## ■ Benefits

- Reduce IT expenditures by 90%
- Sustainable 99.999% availability while handling 300-400 transactions per second

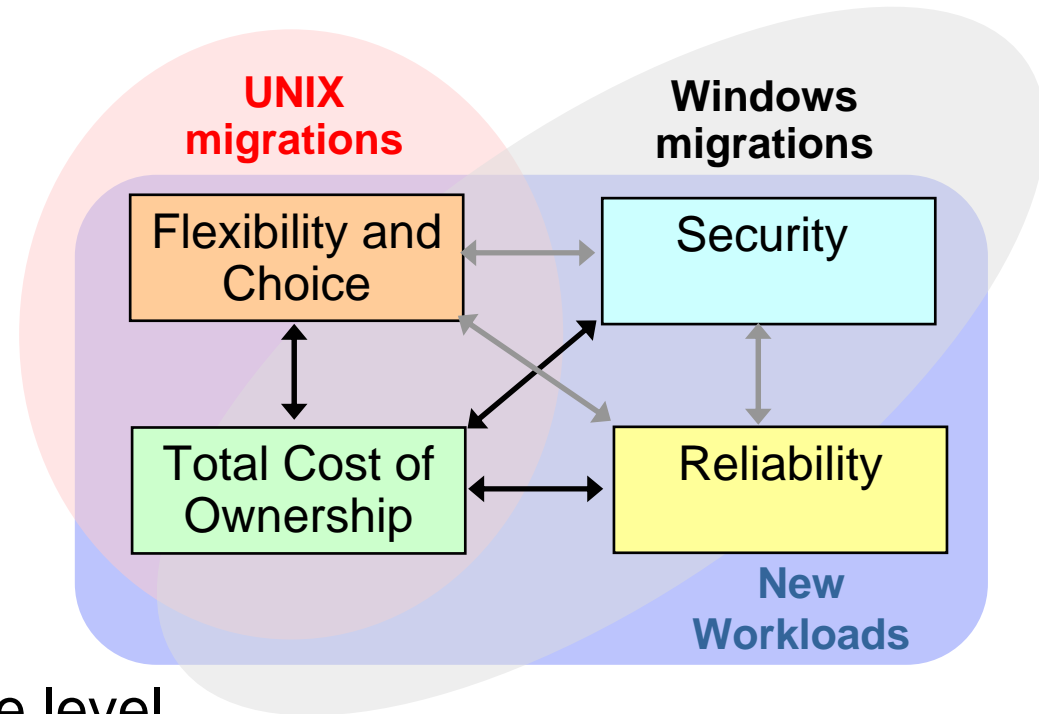


**“By standardizing the architecture, we have reusable components that allow us to rapidly develop and deploy new services and applications to meet our customers’ needs to be competitive in the market place”**

*Robert Wiseman, CTO Cendant Travel Distribution Services*

# Why Linux is Important to Customers

- **Linux is flexible**
- **Linux is secure**
- **Linux is reliable**
- **Linux drives business goals**
  - Reduce costs
  - Improve application service level
  - Internally change business process and drive contribution to business
  - Generate revenue
- **Linux is an excellent path to On Demand**





# Panasonic

## *Business to Consumer*

### ■ Challenge

- Expand internet presence to web commerce while maintaining costs but still providing superior performance, peak buying capacity, and ability to expand to business to business in the future

### ■ Solution

- IBM eServer zSeries running Linux under z/VM with DB2 UDB and WebSphere Commerce Suite

### ■ Benefits

- Rock solid performance and response time to customers, ease of capacity on demand upgrades for peak periods, ability to expand and support new consumers to drive increased revenue for Panasonic

### Panasonic ideas for life

**“We chose the Linux on zSeries platform because it offered unmatched scalability and reliability required to support a serious web commerce presence. The On Demand capability also provides the flexibility to meet peak seasonal demands.”**

*Christopher Tooman  
Senior Manager – Technical  
Services Group  
Panasonic Management  
Information Technology*

# Intermountain Health Care

## *Improve Application Service Level*



INTERMOUNTAIN HEALTH CARE

### ■ Challenge

- Reduce the number of servers, along with associated costs, administration issues and performance inefficiencies, while still providing hospitals with highly available systems

### ■ Solution

- IBM eServer pSeries running IBM AIX and Novell SUSE Linux
- IBM TotalStorage Enterprise Storage Server

**“From an operational perspective, we’re streamlining our processes and improving the efficiency of our people.”**

*Karl West, Assistant Vice President of IT Operations, Intermountain Health Care*

### ■ Benefits

- Reduced complexity to lower administration costs
- Increased availability
- Better use of system resources



# Tennis Australia – Australian Open

## *An IBM On Demand Web site solution*

### ■ Challenge

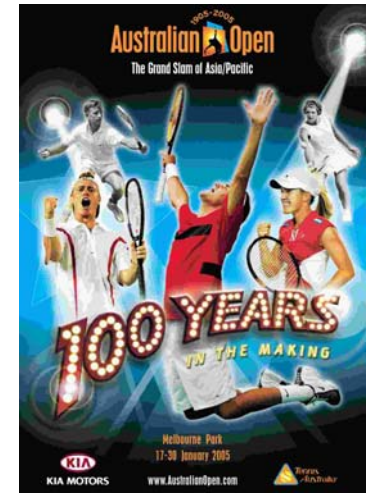
- Provide on demand access to the Australian Open Web site without worrying about complex technology or a substantial investment in a permanent infrastructure

### ■ Solution

- Linux on IBM eServer xSeries and iSeries, AIX on pSeries
- eServer BladeCenter running Linux and DB2 Express supporting the Historical Database (results and statistics)
- Global Services e-business Hosting and Application Management Services
- IBM Tivoli management software, WebSphere, DB2 UDB

### ■ Benefits

- Ability to accommodate the changing needs of the Australian Open
- Flexible, open, resilient, cross-platform infrastructure that can scale to handle over 80 times its regular Web site traffic
- Cost effective, improved manageability: **One eServer i5 520 server consolidated three existing production servers – scoring, staging and publishing**



“This on demand solution from IBM enables Tennis Australia to focus on its core business goal - to promote and develop the growth of tennis throughout the Asia Pacific region and maximize the return on investment.”

Paul McNamee  
Tournament Director,  
Australian Open

# Innovative Technologies

# IBM eServer Blue Gene Solution

**Leadership HPC performance**

**Broad applicability to important HPC workloads helps advance science, engineering and business**

**Enhanced accessibility to world-class computing**

**System**  
64 Racks, 64x32x32

**Rack**  
32 Node Cards

**Cabled 8x8x16**



**180/360 TF/s**  
**32 TB**

**Node Card**  
(32 chips 4x4x2)  
16 compute, 0-2 I/O cards



**2.8/5.6 TF/s**  
**512 GB**

**Compute Card**  
2 chips, 1x2x1



**90/180 GF/s**  
**16 GB**

**Chip**  
2 processors



**5.6/11.2 GF/s**  
**1.0 GB**

**Commercialized and aligned with the IBM server portfolio**

**Sustained investment in Blue Gene technology**



# IBM eServer Application Advantage for Linux

*Chiphopper – IBM porting/rehosting, testing and assurance offering for ISVs*

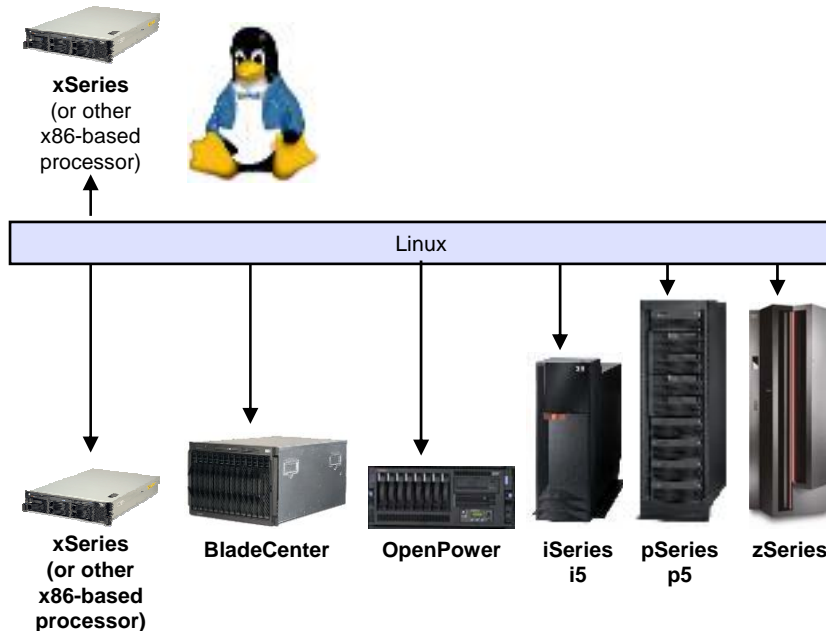
- ISVs achieve portability via standards
  - Linux Standard Base
  - Java
  - Selected IBM middleware
- Rigorous testing apps then porting assistance
- Attain **IBM Ready for eServer with Linux** mark
- ISV support is backed by IBM for porting-related customer problems on target platforms
- First of a kind offering

Ready for

**IBM** @server®

with Linux®

- Provides assurance that IBM stands behind your choice of ISV application on IBM eServer platforms
- Helps grow the number of Linux applications on your platform of preference
- Encourages application conformance to standards, important in emerging Linux landscape
- Helps accelerate the maturation of Linux by facilitating more cost-effective choices for mission-critical, high-end environments



# IBM Workplace Collaboration Services

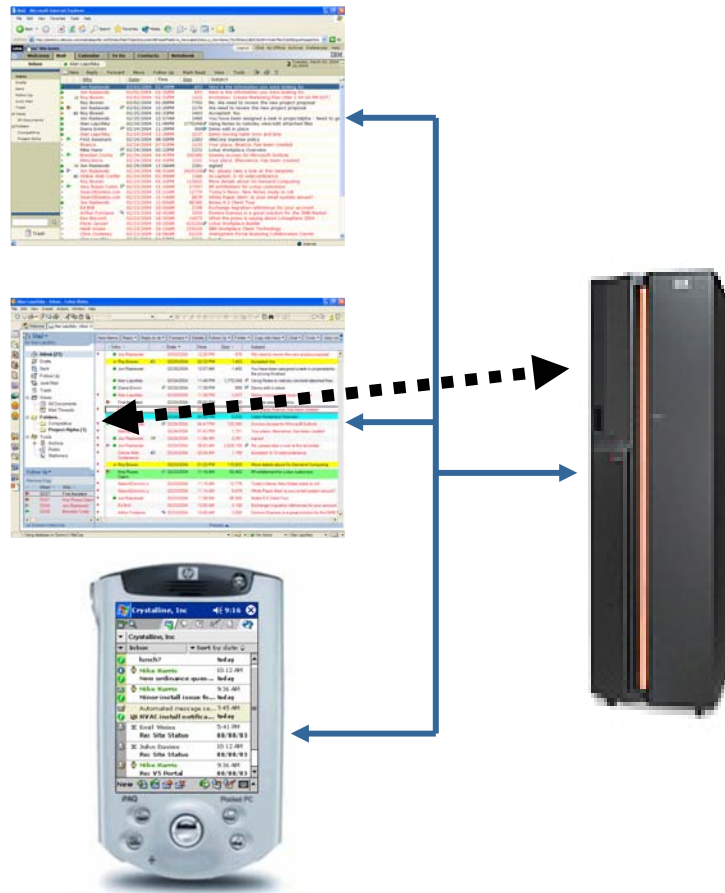
## *Adding Business Value to Linux Servers and Linux Clients*

**What is it?** Single, integrated, customizable collaboration server with ready to use communication and collaboration tools that enable people to do their jobs more effectively – **anytime, anywhere.**

**Access via  
Web browser**  
No additional fees

**Access via  
New Rich Client**  
Pre-requisites  
Workplace Client Technology

**Access via  
Mobile Client**  
Available in future release



### Workplace Collaboration Services

- Mail/Calendar
- Instant Messaging
- Team Spaces
- Web conferencing
- Learning
- Web content management
- Document management
- Document Editors
- Templates
- Forms
- Activity Explorer
- etc

# Pioneer Petroleum

Improve productivity while reducing costs



## ■ Challenge

- Needed an efficient and cost effective way to provide retailers with access to information and to reduce exorbitant licensing costs on the desktop

## ■ Solution

- IBM Workplace Messaging solution running on Red Hat Linux platform providing intuitive document sharing and easy to use graphical user interface

**“We are very excited about the potential of this solution and what it will bring to us.”**

*Dale Sintead  
Director of IT Operations  
Pioneer Petroleum*

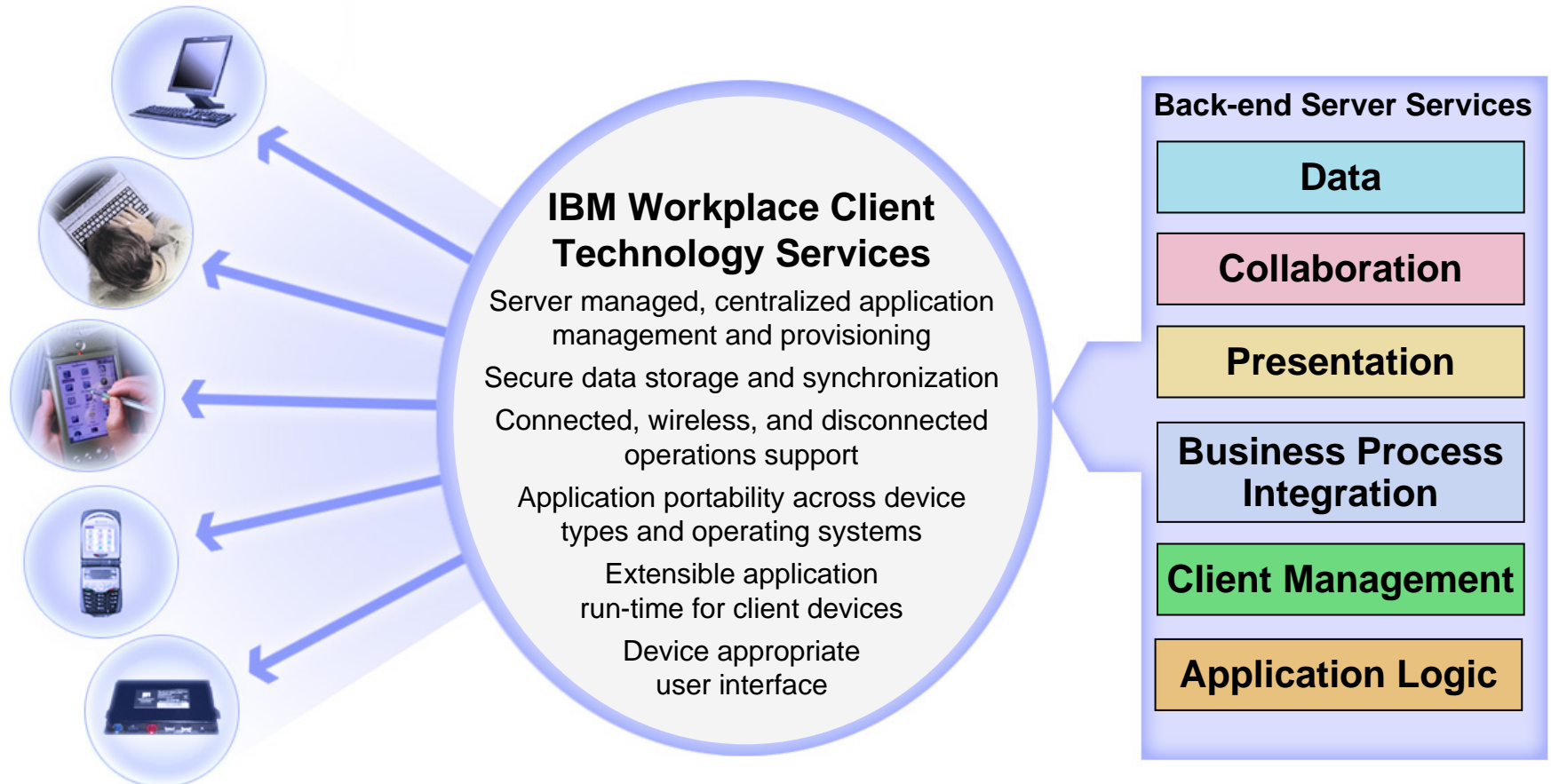
## ■ Benefits

- Realized savings on MS Windows licensing costs
- Increased productivity : Collaborate instead of faxing
- Affordable and reliable/stable operating system

# IBM Workplace Client Technology for Linux

*The power of one architectural model, one programming model, one consistent tool set*

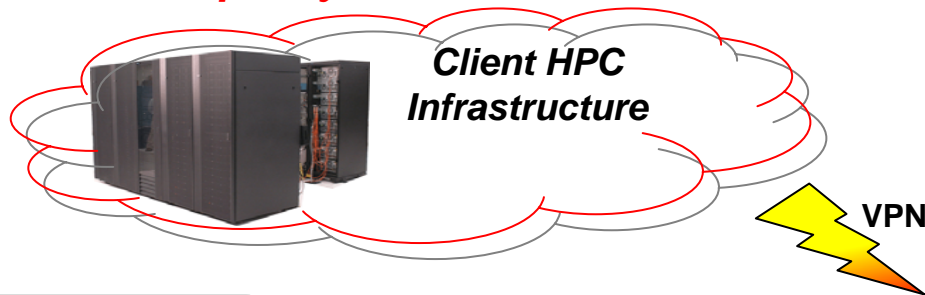
**A new approach for building server managed clients that support multiple user types, user experiences, access points, and forms of connectivity enabling flexible and cost effective access to people, business processes, applications, and content.**



# IBM Deep Computing Capacity on Demand

*“This impressive reduction in computational runtimes will allow us, for the first time, to obtain results in real time” – Jeff Wiseman, VP, Locus Pharmaceuticals*

**= Fixed Capacity / Fixed Cost**



<< \$1/CPU-Hour

**= Variable Capacity / Variable Cost**

**3 DCCoD centers**

- > 2,500 Servers
- > 5,000 CPUs
- Intel® Xeon™
- AMD Opteron™
- IBM POWER™

Industry ISV  
hosted  
software

Poughkeepsie, NY

Montpellier, France

IBM HPC Grid

Houston, TX



# IBM and Linux

# On Demand Portal in IBM

Exp. No.	Expense	Date	Amount	Revised	Payment Type	Charge To	Expense In	Service Amt.
1	Living	06/05/02	1000.00	Yes	Corporate Charge Card	Manufacturing	0.00	0.00
	Room Tax	06/05/02	25.00	Yes	Corporate Charge Card	Manufacturing	0.00	0.00
	Room Tax	06/05/02	25.00	Yes	Corporate Charge Card	Manufacturing	0.00	0.00
	Room Tax	06/05/02	25.00	Yes	Corporate Charge Card	Manufacturing	0.00	0.00
	Room Rate	06/05/02	175.00	Yes	Corporate Charge Card	Manufacturing	0.00	0.00
	Room Rate	06/05/02	175.00	Yes	Corporate Charge Card	Manufacturing	0.00	0.00
	Room Rate	06/05/02	175.00	Yes	Corporate Charge Card	Manufacturing	0.00	0.00
	Room Rate	06/05/02	175.00	Yes	Corporate Charge Card	Manufacturing	0.00	0.00
	Auto Mileage	06/05/02	25.26	No	Out of Pocket	Manufacturing	0.00	0.00
	Auto Mileage	06/05/02	25.26	No	Manufacturing	0.00	0.00	

Expense reports take 60% less time, 80% less cost

Consolidating news sources saved in excess of \$2 million

E-Meetings and instant messaging saves IBM over \$4million /month

WorldJam logo with text: OCTOBER 28 - NOVEMBER 1, 2002. 48,000 People. 40,000 Posts. 400,000 Comments.

Worldjams, jukeboxes, personalized news, discussion forums

IBM BluePages Directory Record for Kishore, Kishore. Includes fields for Name, Email Address, Ext. Floor, Tel. Line, Job, and Responsibility.

People finder - over one million hits a day  
 - 64% of employees use it at least once a week  
 - 50+ applications use the same directory

YOU AND IBM: Growing Your Money. If you and your family are looking ahead financially, Donna Dillenberg offers help through two nationally-recognized firms.

HR portal  
 - 90% satisfaction rate  
 - Over 90% employees registered health benefits here last year, saving IBM over \$1 million

IBM Global Campus: Welcome to IBM Global Campus. IBM Global Campus offers you access to thousands of classroom and e-learning courses. You can browse the catalog and enroll in your favorite course.

IBM realized over \$400 million in cost avoidance in 2002 with over 40% of classes moved online

# Comprehensive IBM Linux Investments

## Linux Partners

- EAL2 **2003**
- EAL3 **2004**
- EAL4 **2005**



## Patents **2005**



## Porting and Competence Centers



## Linux Technology Center **1999**

## Linux White Papers and RedBooks



## Software

- DB2 **1999**
- WebSphere **2000**
- Tivoli **2001**
- Lotus **2001**
- Rational **2003**



## Business Partners



## Linux Services **1999**



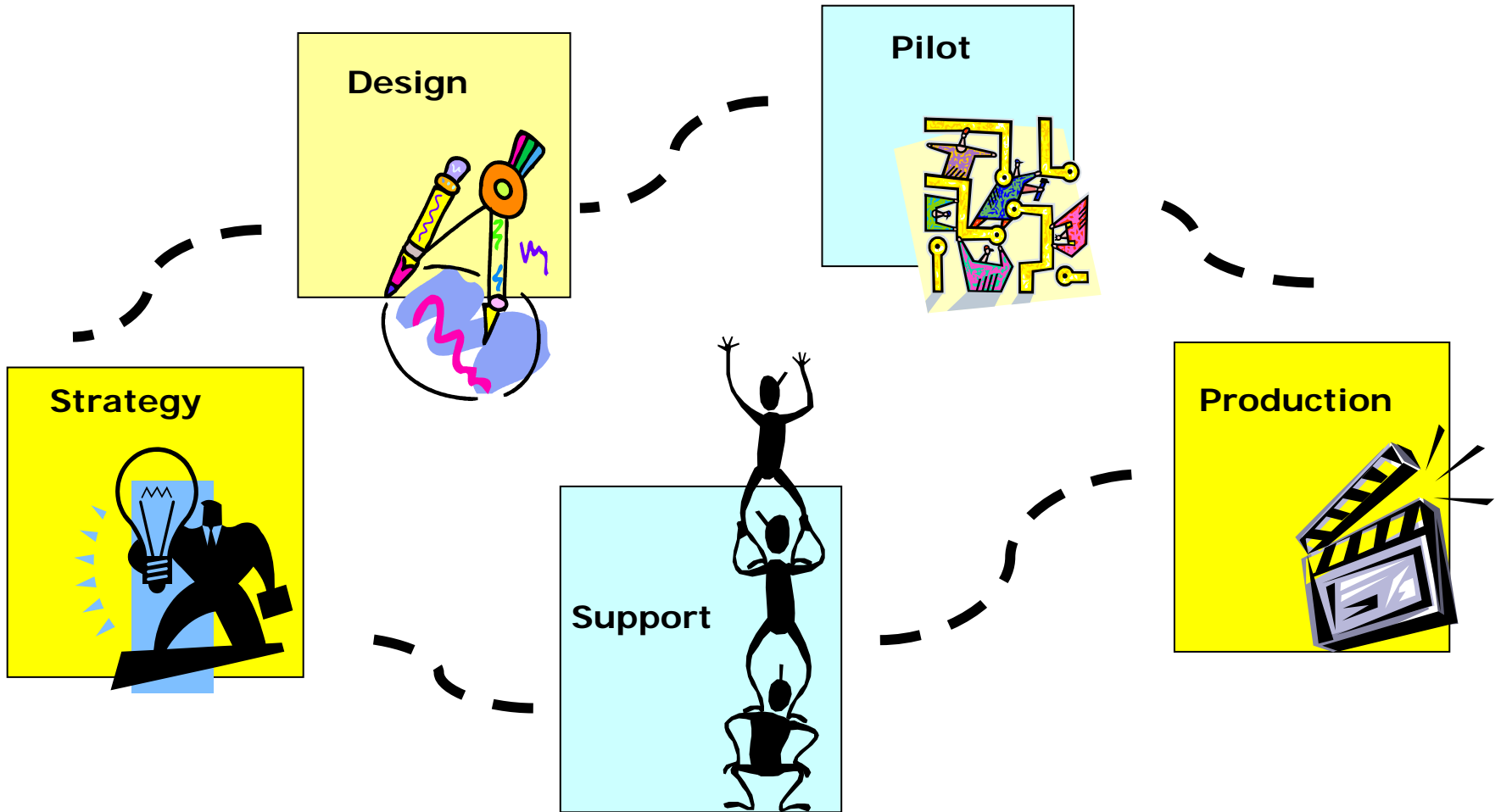
## Open Source Development Lab **2000**



## Servers

- xSeries **1998**
- zSeries **1999**
- Cluster and Power **2001**
- BladeCenter **2002**
- OpenPower and BlueGene/L **2004**

# IBM and Linux Enables Your Enterprise





# Unstoppable *Linux*

*Linux passes the inflection point  
A safe choice for customers*

*Unleashing Innovation  
Pervasive in business*



**IBM**  
*Your Partner  
of Choice*

- Industry leadership
- Strong offerings in hardware and software
- Investing not only in Linux, but in industry specific application solutions and partner support
- Tying it all together with support and services



# IBM Solution Demonstrations

- **Dynamic Infrastructure for mySAP – automated provisioning and deployment with Tivoli Provisioning Manager**
- **On Demand Business Intelligence Grid with DB2 Intelligent Miner**
  - Deep Computing Capacity on Demand
  - WebSphere Information Integrator Grid
- **Eclipse-based Database Developer Tools – including Rational with DB2 or Cloudscape**
- **Create Linux and Open Source solutions**
- **IBM Software Development Platform**
- **zSeries and IT simplification**
- **On Demand Banking**
- **DB2 Integrated Cluster Environment and xSeries**
- **Integrated Platform for Telecomm including BladeCenter-T and Carrier Grade Linux**
- **Collaborate on Linux with Domino, Workplace, WebSphere and Workplace Services Express**
- **Digital Content Creation**
- **Power Everywhere - Blue Gene/L**
- **Infrastructure Consolidation with virtualization technologies**
- **Australian Open Tennis and iSeries**
- **IBM Solutions for Retail including IBM Retail Environment for SUSE Linux, WebSphere, DB2, SurePOS, Tiversity and APUNIX**

# Partner Solution Demonstrations

- **Checkpoint Security Solutions**
- **Corente's "Applications without Boundaries" with AVNET for on-demand application delivery, management, monitoring and security**
- **Abas-USA and Siwel Consulting provide Linux ERP solutions for mid market**
- **eONEGroup and SPSI implement CRM Linux solutions featuring eONECommerce**
- **Cognos ReportNet for enterprise reporting solution**
- **TurboWorx Enterprise Software enables compute-intensive and grid-based application workflows**
- **Information Builders and WebFOCUS team for centralized business intelligence around data and applications**
- **Veritas, IBM and Avnet demonstrate UNIX to Linux migrations and High Availability solutions**
- **Demonstrations of multiple ISVs who used IBM eServer Application Advantage for Linux (Chiphopper) – Avokia, Peregrine Systems, TeamQuest, SSH Communications Security, Information Builders**

धन्यवाद

Hindi

Спасибо

Russian

Grazie

Italian

شكراً

Arabic

多謝

Traditional Chinese

多谢

Simplified Chinese

ขอขอบคุณ

Thai



Thank You

English

The End

ありがとうございました

Japanese

תודה רבה

Hebrew

Gracias

Spanish

Obrigado

Portuguese

Merci

French

Danke

German

감사합니다  
감사합니다  
감사합니다

감사합니다  
감사합니다  
감사합니다

Korean

நன்றி

Tamil

# Notices

- **© Copyright IBM Corporation 2000, 2005. All rights reserved.**
- **This document contains words and/or phrases that are trademarks or registered trademarks of the International Business Machines Corporation in the United States and/or other countries. For information on IBM trademarks go to <http://www.ibm.com/legal/copytrade.shtml>.**
- **The following are trademarks or registered trademarks of other companies.**
  - Java and all Java-related trademarks and logos are trademarks of Sun Microsystems, Inc., in the United States and other countries.
  - UNIX is a registered trademark of The Open Group in the United States and other countries.
  - Microsoft, Windows and Windows NT are registered trademarks of Microsoft Corporation.
  - Red Hat, the Red Hat "Shadow Man" logo, and all Red Hat-based trademarks and logos are trademarks or registered trademarks of Red Hat, Inc., in the United States and other countries.
  - Linux is a trademark of Linus Torvalds in the United States, other countries, or both.
- **All other products may be trademarks or registered trademarks of their respective companies.**
- **Notes:**
  - This publication was produced in Canada. IBM may not offer the products, services or features discussed in this document in other countries, and the information may be subject to change without notice. Consult your local IBM business contact for information on the product or services available in your area.
  - All statements regarding IBM's future direction and intent are subject to change or withdrawal without notice, and represent goals and objectives only.
  - Information about non-IBM products is obtained from the manufacturers of those products or their published announcements. IBM has not tested those products and cannot confirm the performance, compatibility, or any other claims related to non-IBM products. Questions on the capabilities of non-IBM products should be addressed to the suppliers of those products.
  - Prices subject to change without notice. Contact your IBM representative or Business Partner for the most current pricing in your geography.