



IBM Delivers Java-Based Management Applications

Operates on Microsoft® Windows® NT® V 4.0

A cost-effective, ready-to-run, comprehensive network management application for the workgroup

Reduces network ownership cost and improves network availability

Provides easy-to-use, graphical management of networks

Provides virtual LAN configuration management and management of ATM switches

Provides graphical views of IP network topology

General description

Nways™ Workgroup Manager, an SNMP management platform and suite of device management applications, provides Java device management support for the IBM 8210 Nways Multiprotocol Switched Services (MSS) Server, the IBM 8273 Nways Ethernet RouteSwitch and multivendor hardware.

The Java management support enables you to manage your devices from the intranet, the Internet and from your local NT workstation. And Nways Workgroup Manager provides graphical device management support for a wide range of workstations, hubs, routers, bridges and switches from the Windows NT 4.0 environment.

Hot buttons

- Provides comprehensive device management support for both ATM and LAN networking devices
- Fully functional management support from a Web browser or a stand-alone application for the 8210 and 8273 and multivendor hardware
- Web-based device management support of multivendor SNMP-based hardware
- Intuitive data organization and user interface for the devices supported by Java management applications
- True portability: The Java device management applications run in any Web browser with support for JavaSoft JDK 1.1 application programming interface (API)
- Automatic IP network discovery
- Real-time, graphical views of network status
- Ability to browse, update and compile MIBs
- Color-coded and aggregated network and device real-time status
- Trouble-ticketing
- Trap management, including user-definable actions based on trap severities
- Collection and presentation of real-time and historical statistics
- True 32-bit application running on Windows NT 4.0. Third-party TCP/IP software not required.

IBM versus the competition

- Cisco
 - No Java-based management support today
 - No integrated management solution
- 3Com
 - No Java-based management support today
- Bay Networks
 - No Java-based management support today



Reasons to choose Nways Workgroup Manager

- Part of overall IBM network solutions
- Comprehensive solution for LAN and ATM networks
- State-of-the-art Java technologies for management
- Easy installation and configuration
- Solution that grows with your network
- Full service and support
- Ready to run, out of the box

Ordering information

Product	Part Number
<i>Nways Workgroup Manager for Windows NT</i>	4019881



© International Business Machines Corporation 1997

Department CV3
PO Box 12195
RTP NC 27709
USA

Printed in the United States of America
6-97

All Rights Reserved

References in this publication to IBM products or services do not imply that IBM intends to make them available in all countries in which IBM operates.

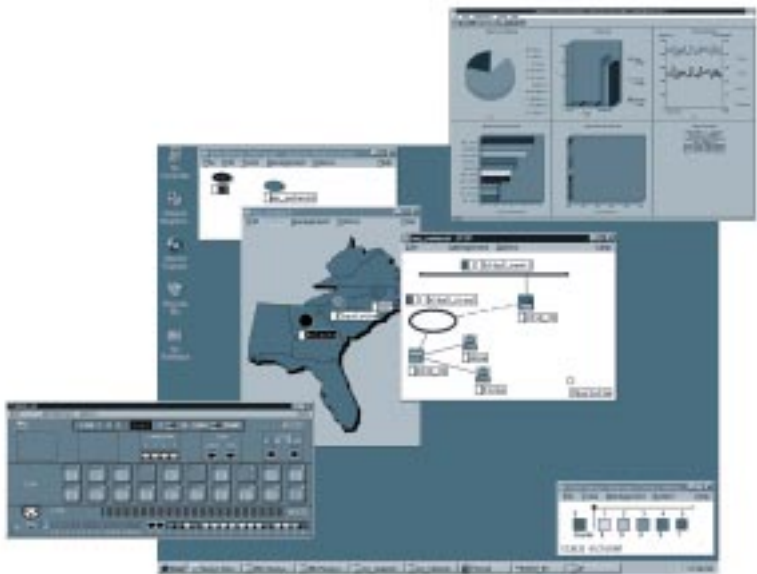
Copying or downloading the images contained in this document is expressly prohibited without the written consent of IBM.

® IBM is a registered trademark of International Business Machines Corporation.

™ Nways is a trademark of International Business Machines Corporation.

® Microsoft, Windows and Windows NT are registered trademarks of Microsoft Corporation.

All other company names or products are trademarks or registered trademarks of their respective companies.



Printed on recycled paper.

DIDA22

