



Domino e-mail for AS/400e

IBM Networking Solutions for AS/400

Connecting branch offices and mobile workers to corporate applications and data

Success in today's ultracompetitive economy requires a decentralized business model that places sales, service and support staff closer to customers. Some of these staff may work out of branch offices. Others may spend much of their time working out of hotel rooms, airport lounges and other remote locations. Add to that the continuing trend toward mergers and acquisitions and you have an extremely mobile and geographically dispersed workforce.

The good news is that by being closer to customers, these workers can be more effective in transacting business and providing the level of customer support that ensures long-term loyalty and repeat business. They can only be successful, however, if they are able to communicate with their colleagues and managers in other locations, and easily access the corporate data they need to make the best decisions for the company.

Most companies have local area networks in their central offices. Extending these networks, however, to link branch offices and mobile workers reliably and securely without jeopardizing existing network investments can be challenging. Providing branch offices and remote workers with e-mail, collaborative capabilities and direct access to

corporate data is critical to their ability to conduct and close business in the field. This requires a multisite networking solution.

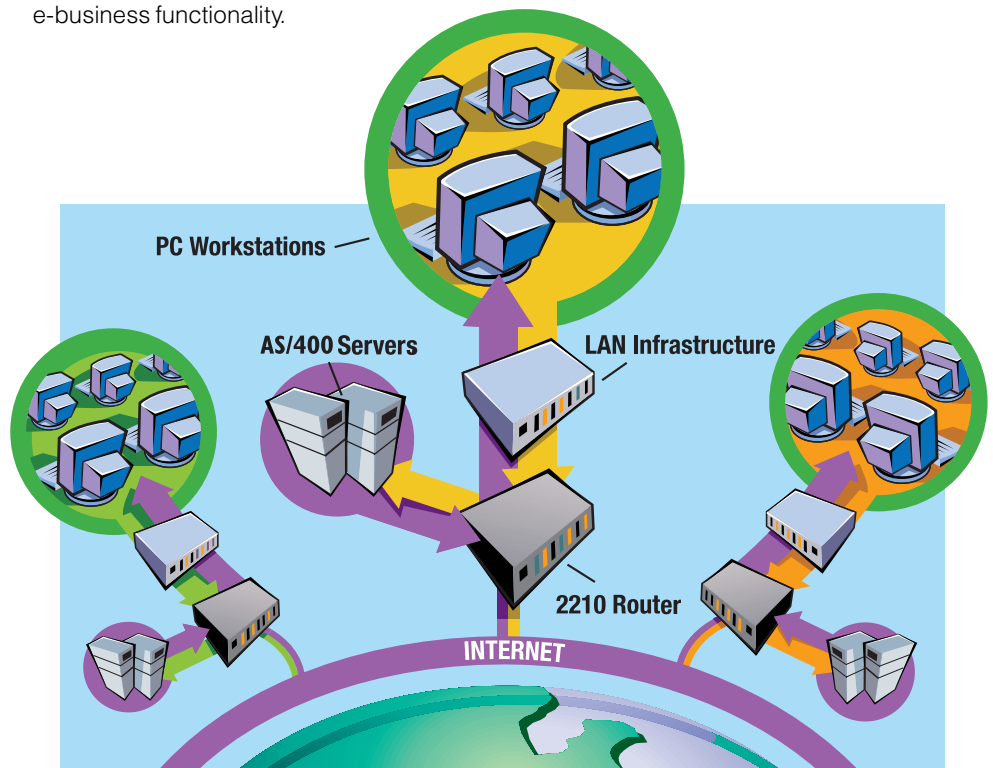
A complete e-business networking solution for the AS/400

For nearly a decade, IBM's AS/400® has been the most popular server for medium-scale business applications. Its popularity derives from its ease of use, reliability and affordability. The introduction of AS/400e™ allows you to leverage your infrastructure and knowledge investments in AS/400 while extending its capabilities to include key e-business functionality.

To make it easy for you to use the AS/400 platform as the foundation for e-business applications, including PC-based e-mail and Internet access, IBM® has created the Domino™ e-mail for AS/400e Networking Solution.

A scalable, high-performance solution built with industry-leading IBM Products

Designed specifically to meet the growing requirements of AS/400 enterprises, the Domino e-mail for AS/400e Networking Solution comprises IBM's industry-leading networking, server and software products. This solution delivers scalable, high performance



interconnectivity and reduces costs. Specifically:

- IBM's 2210 Nways® Multiprotocol Routers provide a low-cost entry node with the power and versatility of a full-function, multiprotocol bridge/router. They offer an extensive range of connectivity, protocols and prices to allow cost-effective implementation of network computing across a range of remote locations, branch offices and regional sites. They also enable virtual private networks to provide secure access to protected data, such as e-mail or critical information, among multiple offices and remote users.
- IBM's AS/400e is a highly integrated, extremely reliable application server that is easy to own and maintain. Enhancements, including increased processing power, improved price/performance, Lotus® Domino running as a native application, a host of Web-enabled packaged AS/400 applications and an efficient implementation of the Java™ Virtual Machine, make the AS/400e a very effective e-business server.
- Lotus Domino is an applications and messaging server with an integrated set of services that enables companies to create secure, interactive business solutions for the Internet and corporate intranets. Domino provides fast and easy access to applications and data from any Web browser or Lotus Notes™ client.

IBM helps you get closer to your customers

Driven by the need to take your business to your customers, wherever they may be, companies must implement multisite networking solutions to ensure reliable, secure and timely connections with branch offices and remote workers. At the same time, they want solutions that will integrate easily with their existing network infrastructures to protect those investments.

IBM's Domino e-mail for AS/400e Networking Solution meets those requirements and more. It is designed to tie together multiple locations and mobile workers, deploy quickly and easily, and provide the flexibility and scalability to accommodate growth. It furnishes workers with the rapid access to corporate data, easy e-mail communication and the ability to collaborate with colleagues across town or around the world. Most important, it enables your organization to get closer to its customers to build the long-term, profitable relationships that are critical to your success.

For more information

To learn more about IBM's end-to-end networking solutions, products, services and support, visit us at: www.ibm.com/networking



© International Business Machines Corporation 1998

IBM Corporation
Department J7UB
3039 Cornwallis Road
RTP NC 27709
USA

Printed in the United States of America
09-98
All Rights Reserved

References in this publication to IBM products or services do not imply that IBM intends to make them available in all countries in which IBM operates.

Copying or downloading the images contained in this document is expressly prohibited without the written consent of IBM.

IBM, AS/400, AS/400e, the e-business logo and Nways are trademarks or registered trademarks of International Business Machines Corporation.

Lotus Domino and Lotus Notes are trademarks or registered trademarks of Lotus Development Corporation.

Other company, product and service names may be trademarks or service marks of other companies.



Printed on recycled paper.

IBM Domino e-mail for AS/400e Networking Solution at a Glance

Products Included:

- AS/400e Servers, Models 170, S10, S20, S30, S40
- 2210 Nways Multiprotocol Routers (2210-12E for Ethernet and 2210-12T for Token-Ring)
- Lotus Domino applications and messaging server software

Business Benefits:

- Provides security-enhanced, reliable connectivity between multiple locations for access to corporate data and e-mail
- Ensures easy deployment through integrated and tested components
- Works with your existing network infrastructure
- Provides single source of support through IBM
- Furnishes scalability to grow with your business
- Reduces complexity and costs



G224-4583-00