

***InfoPrint 75/InfoPrint 100
PRINTER DRIVER
USER'S GUIDE***

- PCL5 Printer Driver -

Read this manual carefully and keep for future reference.

- Read safety instructions carefully and become familiar with this manual before starting operation.
- Keep this manual handy for quick reference.

Revision Records

Manual Revisions	Description of Addition/Change	Date of Change
00	First Edition – All pages	June 2008
01	Front Cover, ii [01], iii [01]	August 2008
02	Front Cover, ii [02], iii [02]	January 2010

Introduction

This manual provides information on how to install the Printer Driver for the following printers as well as how to operate the PCL5 Printer Driver.

Model name	Type name
InfoPrint 75	4372-001
InfoPrint 100	4372-002



- Read safety instructions carefully and become familiar with this manual before starting operation.
- Keep this manual handy for quick reference.
- Unauthorized reproduction of this manual in whole or in part is prohibited.
- In no event shall Ricoh Co., Ltd. be liable for any damage directly or indirectly caused by any defect in this manual or software.
- Information in this manual is subject to change without notice.

Trademark

Copyright © 2008-2010 Ricoh Co., Ltd.
All Rights Reserved.

All copyrights to this manual and its content are held by Ricoh Co., Ltd.

This manual may not be used, reproduced, transferred, saved to retrieval system, or translated to any language, including computer language, in whole or in part in electric, mechanical, magnetic, optical, chemical, document or other format without prior consent of Ricoh Co., Ltd.

PostScript is registered trademarks or trademarks of Adobe Systems Incorporated.

Microsoft, Windows are registered trademarks or trademarks of Microsoft Corporation in the United States and/or other countries.

Product names and company names contained herein are registered trademarks or trademarks of their respective companies.

InfoPrint Solutions Company is a tradename of InfoPrint Solutions Company, LLC, in the United States, other countries, or both. InfoPrint is a registered trademark of Ricoh Co., Ltd., in the United States, other countries, or both. InfoPrint is used under license from the trademark owner.

OG	A	02	
----	---	----	--

Table of Contents

Chapter 1	Before Using This Product.....	1-2
1.1	Printer Driver File Structure	1-2
1.2	About Printer Driver	1-3
1.2.1	Operating Environment of Printer Driver.....	1-3
1.2.2	Selecting Printer Driver	1-3
Chapter 2	Print from Windows Vista.....	2-2
2.1	Checking Connection with Printer	2-2
2.2	Adding LPR Port.....	2-5
2.3	Installing Printer Driver	2-8
2.4	Displaying Properties.....	2-11
2.5	Printer Sharing.....	2-12
2.6	Changing Print Port	2-13
2.6.1	Adding New LPR Port	2-13
2.6.2	Printing Via Print Server.....	2-15
2.7	Changing Printer Driver Default Values.....	2-16
2.8	Printing from Application Software	2-18
Chapter 3	Print from Windows 2000/XP/Server 2003	3-2
3.1	Checking Connection with Printer	3-2
3.2	Installing Printer Driver	3-5
3.3	Displaying Properties.....	3-9
3.4	Printer Sharing.....	3-10
3.5	Changing Print Port	3-11
3.5.1	Adding New LPR Port	3-11
3.5.2	Printing Via Print Server.....	3-13
3.6	Changing Printer Driver Default Values.....	3-14
3.7	Printing from Application Software	3-16
Chapter 4	Various Settings of PCL5 Driver	4-2
4.1	Printer-Specific Functions.....	4-2
4.2	Printing on Custom Size Paper	4-3
4.3	Fixed Orientation	4-4
4.4	Checking Printer Driver Version	4-5
4.4.1	PCL5 Driver that Comes with Windows Vista.....	4-5
4.4.2	PLC5 Driver that Comes with Windows 2000/XP/Server 2003	4-6

Chapter 1

Before Using This Product

OG	A	00	
----	---	----	--

Chapter 1 Before Using This Product

1.1 Printer Driver File Structure

The Printer Driver consists of the following files described in the table. In order to install a printer driver, all corresponding files with each language and PDL category are necessary.

Language	PDL	File Name	Description
Japanese	PostScript	Readme.rtf	ReadMe file for Japanese PostScript driver
		DriverManualPS.pdf	User's Guide for Japanese PostScript driver
		PScript.inf	Setup information file for Japanese PostScript driver
		HK05IM21.PPD	PPD file for Japanese PostScript driver
	PCL5	Readme.rtf	ReadMe file for Japanese PCL5 driver
		DriverManualPCL.pdf	User's Guide for Japanese PCL5 driver
		Unidrv.inf	Setup information file for Japanese PCL5 driver
		HK05I521.gpd	General printer description file for Japanese PCL5 driver
		hklbmpcl.dll	Resource file for Japanese PCL5 driver
English	PostScript	Readme.rtf	ReadMe file for English PostScript driver
		DriverManualPS.pdf	User's Guide for English PostScript driver
		PScript.inf	Setup information file for English PostScript driver
		HK05IM21.PPD	PPD file for English PostScript driver
	PCL5	Readme.rtf	ReadMe file for English PCL5 driver
		DriverManualPCL.pdf	User's Guide for English PCL5 driver
		Unidrv.inf	Setup information file for English PCL5 driver
		HK05I521.gpd	General printer description file for English PCL5 driver
		hklbmpcl.dll	Resource file for English PCL5 driver



ATTENTION

The "Readme.rtf" file contained in the target Printer Driver provides the latest information and instructions for use of the printer driver that are not contained in this user's guide. Read the "Readme.rtf" first before installing Printer Driver for printing.



ATTENTION

This guide describes how to install the PCL5 Printer Driver. For information about how to use the PostScript driver, see section "- PostScript Printer Driver -" in "Printer Driver User's Guide".

1.2 About Printer Driver

To print to the printer from the computer running operating system such as Windows, you need to have software called "Printer Driver."



To print to the printer from the PostScript printer driver, see "Printer Driver User's Guide – PostScript Printer Driver –".

1.2.1 Operating Environment of Printer Driver

The PCL5 Printer Driver can be installed in the computer running the following operating system:

- ◇ Microsoft Windows Vista (32-bit version) Japanese or English version
- ◇ Microsoft Windows Server 2003 (32-bit version) Japanese or English version
- ◇ Microsoft Windows XP (32-bit version) Japanese or English version
- ◇ Microsoft Windows 2000 Japanese or English version



Install individual printer drivers depending on the type of the operating system running on the computer to be used for printing.



Printer driver that runs on the operating system of the computer has the following roles:

- (1) Transmits printer information such as printable paper size and font included in the printer to application software.
- (2) Provides user interface, including selection of paper size, so that printer-specific function can be used.
- (3) When printing is requested from application software, document data on the application software is converted into print data that can be processed on the printer.

1.2.2 Selecting Printer Driver

For information on how to install and use the PCL5 printer driver, see the following explanation sections:

The printer driver described in this manual is intended for the English version. For the Japanese version, see the Japanese manual stored in a separate folder.

Operating System	Type of Printer Driver	Explanation Sections
Windows Vista	PCL5 Driver	Chapter 2 Print from Windows Vista Chapter 4 Various Settings of PCL5 Driver
Windows Server 2003/ XP / 2000	PCL5 Driver	Chapter 3 Print from Windows 2000/XP/Server 2003 Chapter 4 Various Settings of PCL5 Driver

OG	A	00	
----	---	----	--

Chapter 2

Print from Windows Vista

OG	A	00	
----	---	----	--

Chapter 2 Print from Windows Vista

To print from Windows Vista, you need to have the printer driver installed on the computer before starting operation. Use the following steps to check connection with a printer and install the printer driver:

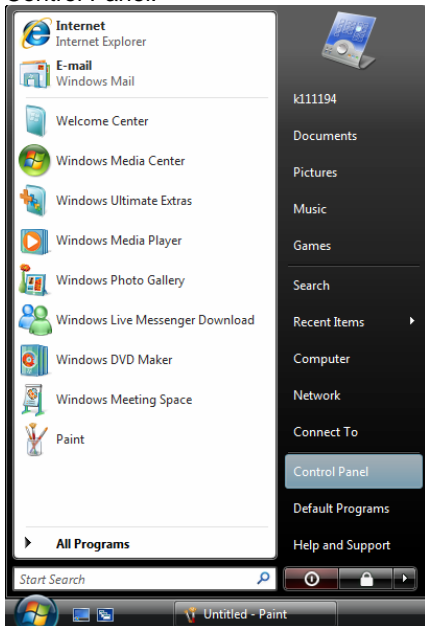
2.1 Checking Connection with Printer

To print directly to the printer from Windows via a network, you need to build a TCP/IP environment for Windows and configure the LPR port settings. Check Windows network settings and connection between the printer and computer before installing the printer driver.

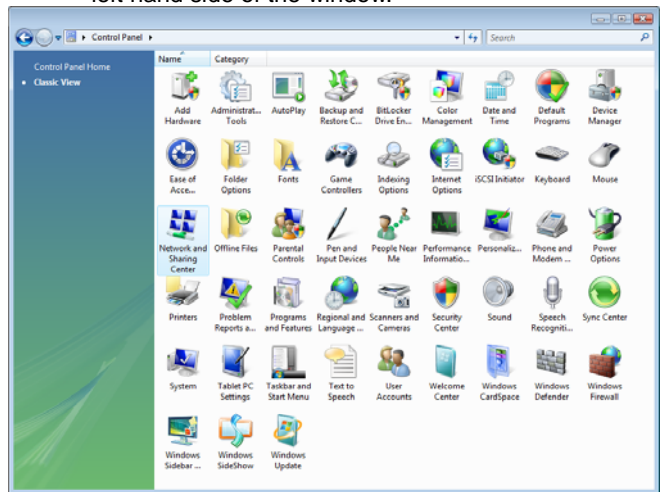


For information about how to configure the network for a printer unit, see the “User’s Guide” that comes with the printer. Alternatively, to print to the printer from Windows via a network, you can print via a Windows shared printer other than the LPR printing described in this chapter.

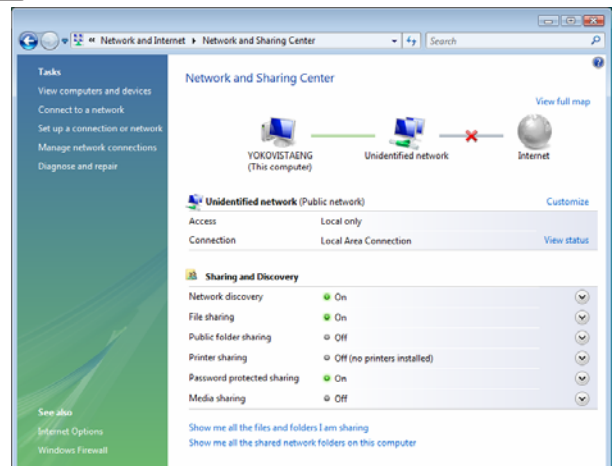
- 1 Connect the printer and the computer to a network and turn on the printer.
- 2 Start Windows and log on with the user name with Administrator privilege.
- 3 First check Windows TCP/IP settings. Select [Start] - [Control Panel] and open the Control Panel.



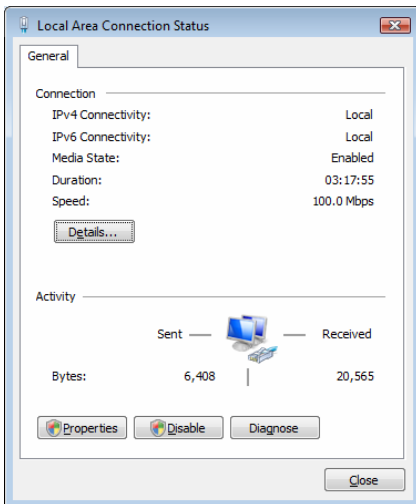
- 4 Double-click the [Network and Sharing Center] icon. When the [Network and Sharing Center] icon is not displayed, select [Classic View] from the menu on the left hand side of the window.



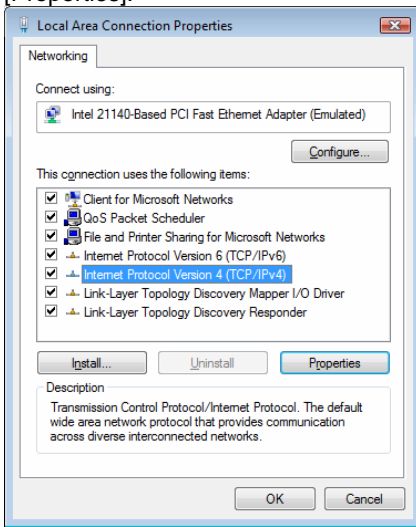
- 5 Click the [View Status] in [Local Area Connection].



6 Click the [Properties] button.

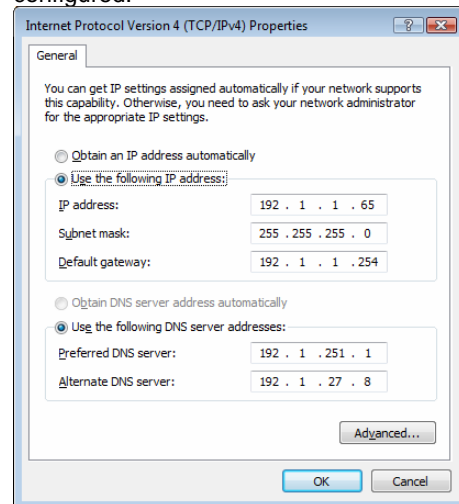


7 In the list of services, locate [Internet Protocol Version 4 (TCP/IPv4)] and click on it. Next, click on [Properties].



When the [User Account Control] dialog box is displayed to check the user account before [Local Area Connection Properties] dialog box appears, click [Continue].

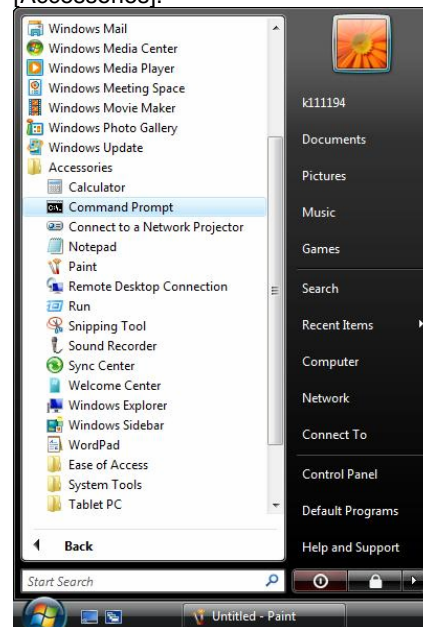
8 Make sure [IP address] settings have been properly configured.



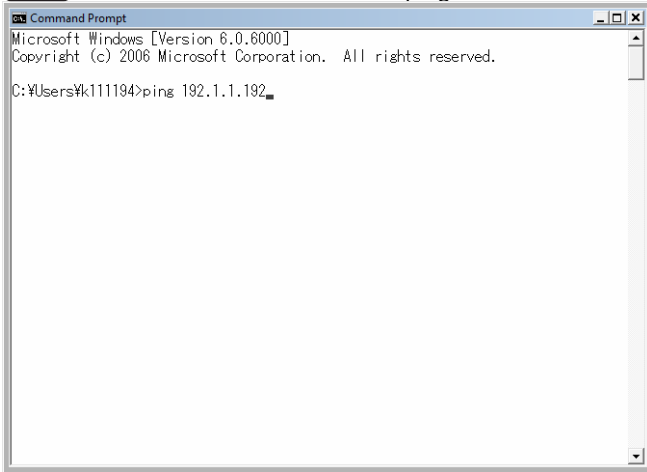
For details on how to configure Windows such as the IP address, see the Windows manual and Help function or ask your network administrator. For technical information about TCP/IP, see commercially available publications.

9

Next, verify that TCP/IP communication between the printer and Windows is enabled. Select [Command Prompt] menu from [Start] – [All Programs] – [Accessories].

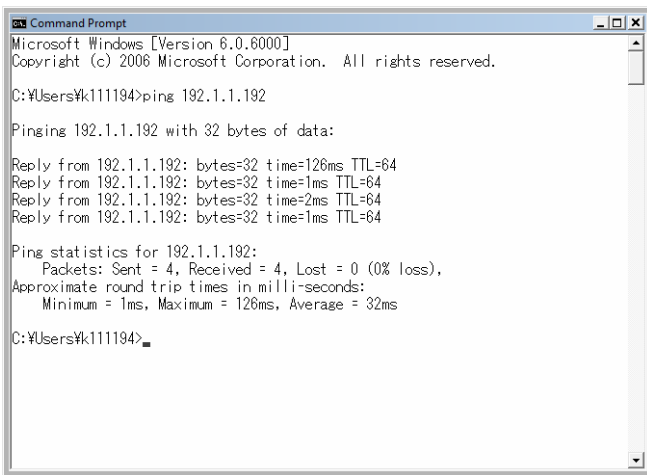


- 10** Enter the ping command as shown in the diagram.
Enter the IP address after the ping command.



NOTE For the printer's IP address, check what is displayed after selecting [Information] – [Network] on the control panel of the printer unit.

- 11** When the [Reply] message is displayed as shown in the diagram, verification of connection is complete. Proceed to installation of the printer driver. When the "Request timed out" message is displayed, check the printer's power supply, network cable connection, and printer's or computer's TCP/IP settings again.

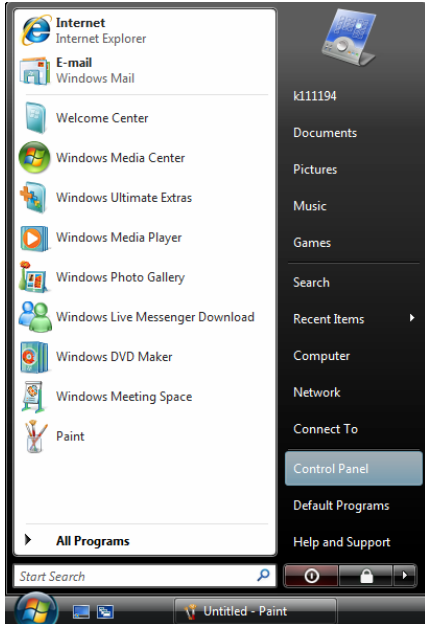


2.2 Adding LPR Port

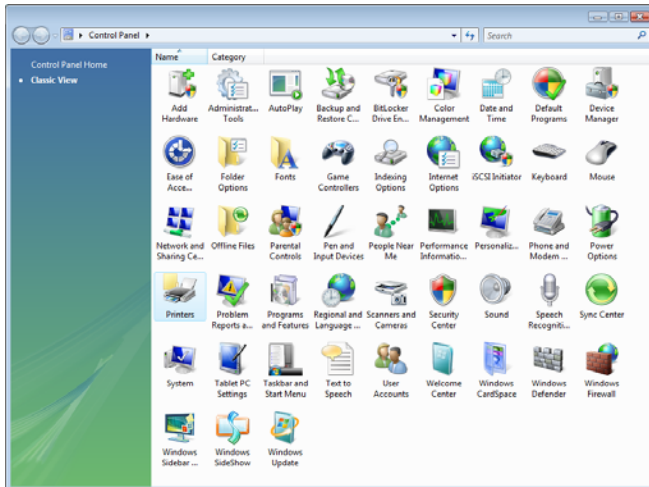
Add a port for printer output, following the steps below:

1 Log on with the user name with Administrator privileges.

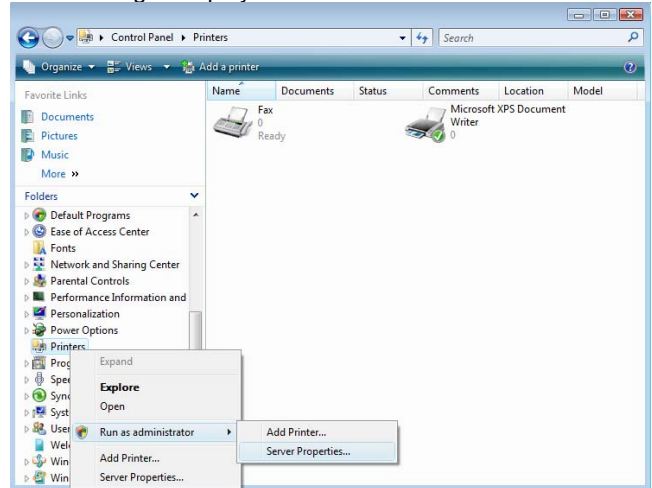
2 Select [Start] - [Control Panel] and open the Control Panel.



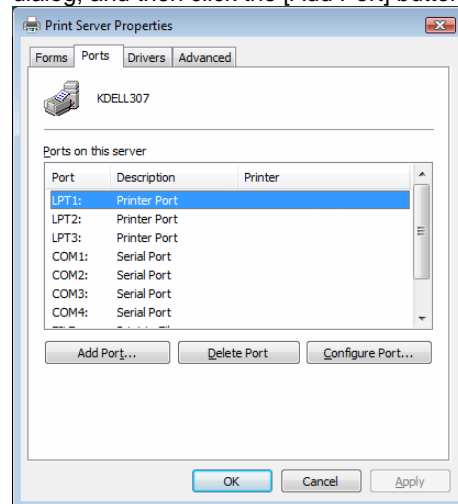
3 Double click on the [Printer] icon. When the [Printer] icon is not displayed, select [Classic View] from the menu on the left hand side of the window.



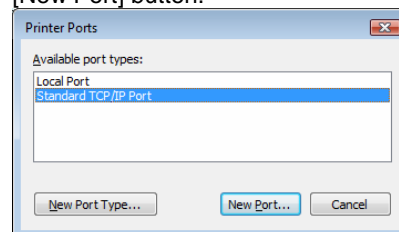
4 Right-click the printer menu on the left hand side of the window and select [Run as administrator] – [Server Properties]. The [Print Server Properties] dialog is displayed.



5 Select the [Ports] tab in the [Print Server Properties] dialog, and then click the [Add Port] button.

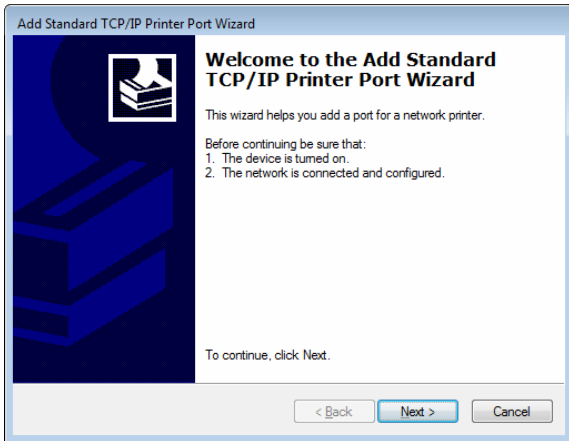


6 Select [Standard TCP/IP Port], and then click the [New Port] button.

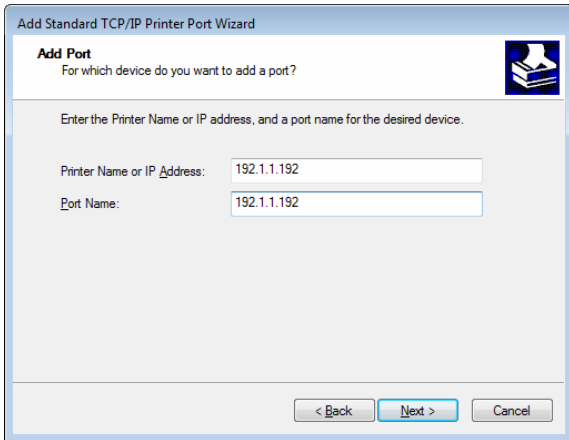


POINT Even if [LPR Port] is displayed in the list, be sure to select [Standard TCP/IP Port].

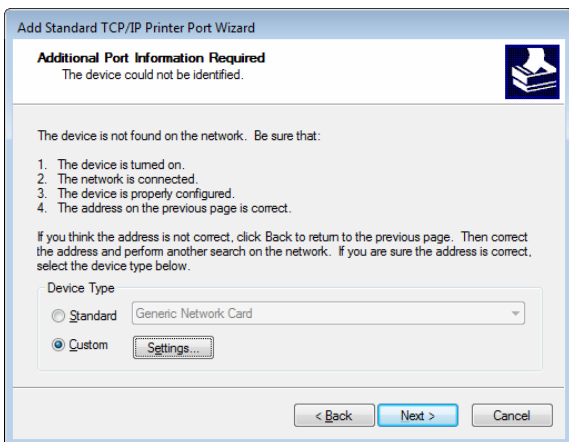
7 Click the [Next] button.



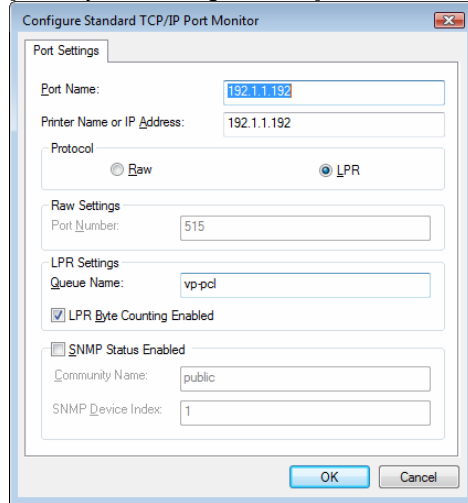
8 Enter the printer's IP address in the [Printer Name or IP Address] field, and then click the [Next] button. Under [Port Name], you can also change to any name.



9 Select [Custom], and then click the [Settings] button.

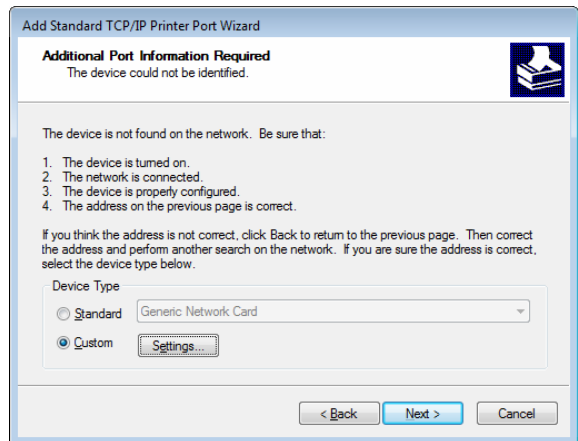


10 Under [Protocol], select [LPR]. Enter the logical printer name in [Queue Name] and turn on (check) [LPR Byte Counting Enabled], and then select [OK].

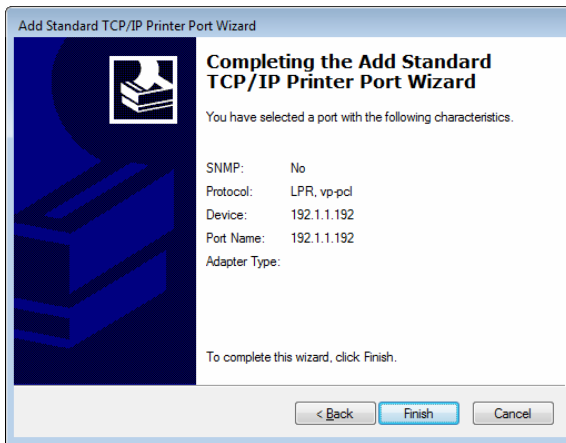


! POINT The logical printer is configured on the printer unit. The logical printer such as "vp-pcl" is pre-defined. Use "vp-pcl" as the logical printer name in factory default settings. Enter "vp-pcl" in lower-case alphabetic letters. For information about how to configure the network printer, see "User's Guide" that came with the product.

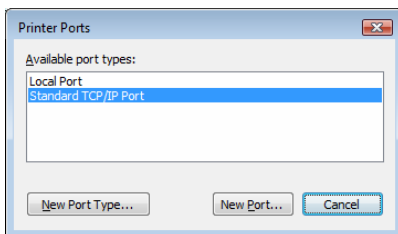
11 Click the [Next] button.



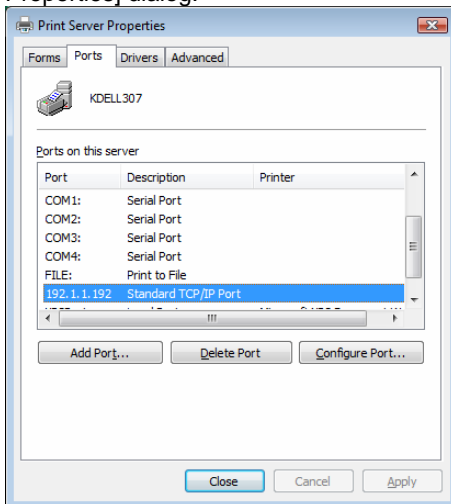
12 Click the [Finish] button.



13 Click the [Cancel] button.



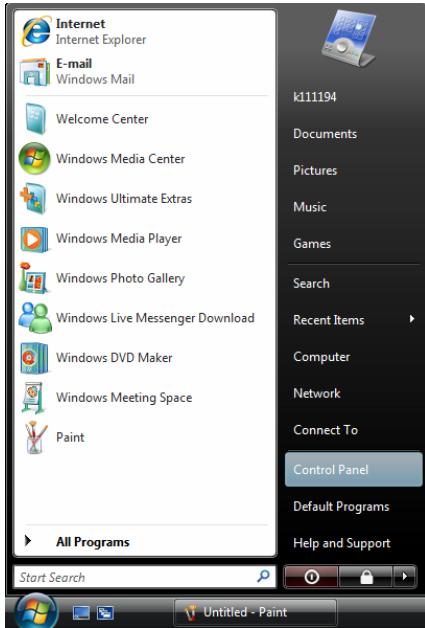
14 Click the [Close] button to close the [Print Server Properties] dialog.



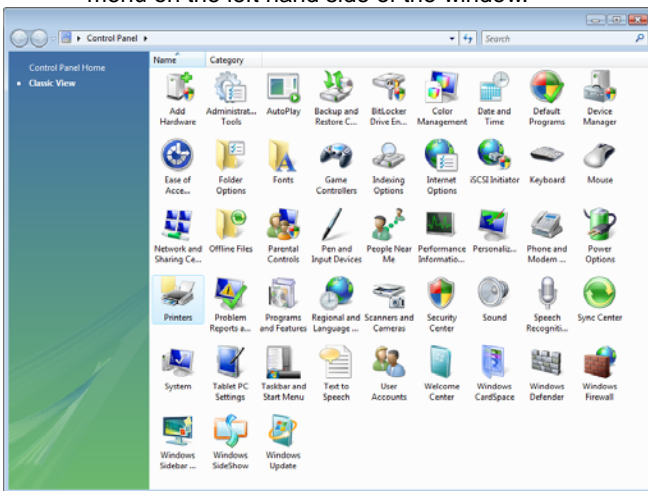
2.3 Installing Printer Driver

You can install the PCL5 Printer Driver that came with Windows Vista. Before installing the PCL5 Printer Driver, prepare the driver related files by downloading from dedicated Web site. Use the following steps to install the printer driver:

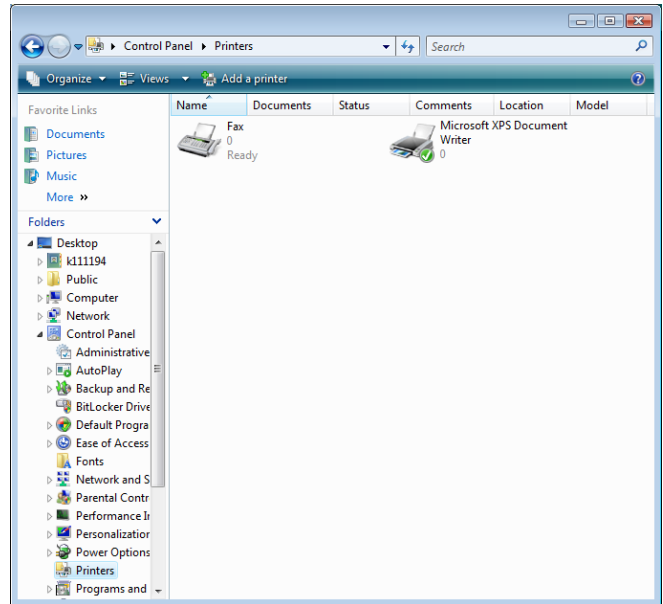
- 1** Start Windows.
Make sure that the printer is turned on.
- POINT** Log on to Windows with the user name with Administrator privileges.
- 2** Select [Start] - [Control Panel] and open the Control Panel.



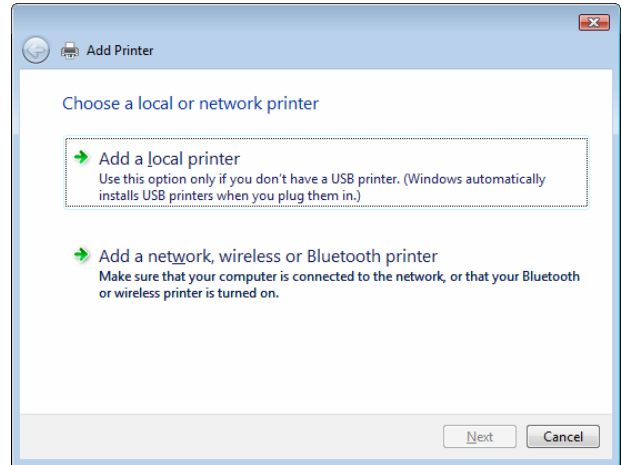
- 3** Double click on the [Printer] icon. When the [Printer] icon is not displayed, select [Classic View] from the menu on the left hand side of the window.



- 4** At the top of the screen, click [Add Printer].



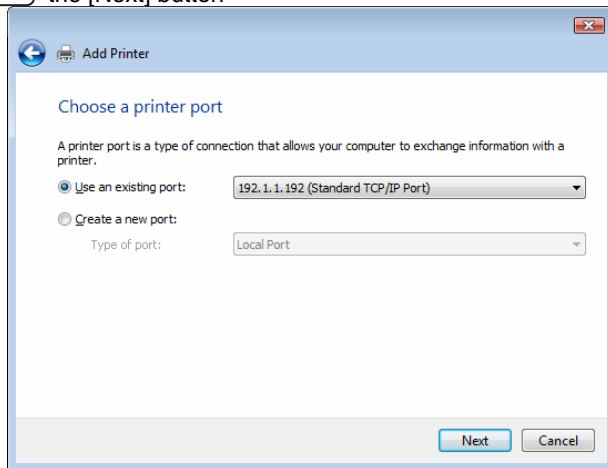
- 5** Click on [Add a local printer]



- POINT** To use the printer by connecting to the network or print via another print server, select [Add a local printer].

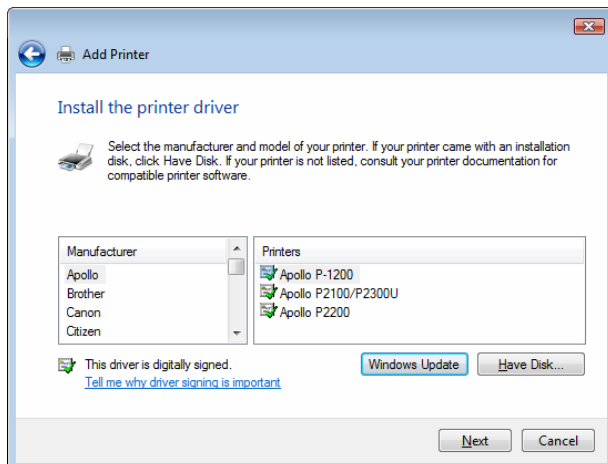
- NOTE** To configure settings for printers that are plugged into another computers and shared on the network, select [Add a network, wireless or Bluetooth printer]. Computers and printers on the network are located and displayed in tree format. Select the computer and shared printer to be used. It may take time to locate depending on the network environment.

- 6** Select printer connection port, and then click the [Next] button

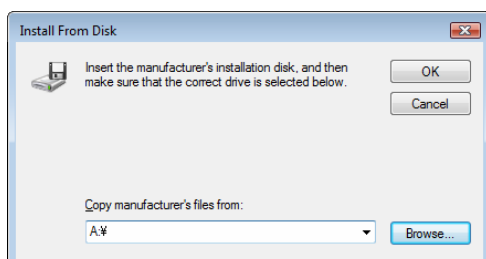


To add LPR port (Standard TCP/IP Port), see ["2.2 Adding LPR Port"](#). Also see ["2.1 Checking Connection with Printer"](#) and ["2.6.1 Adding New LPR Port"](#). You can also change connection port settings after finishing installation of the printer driver. See ["2.6 Changing Print Port"](#).

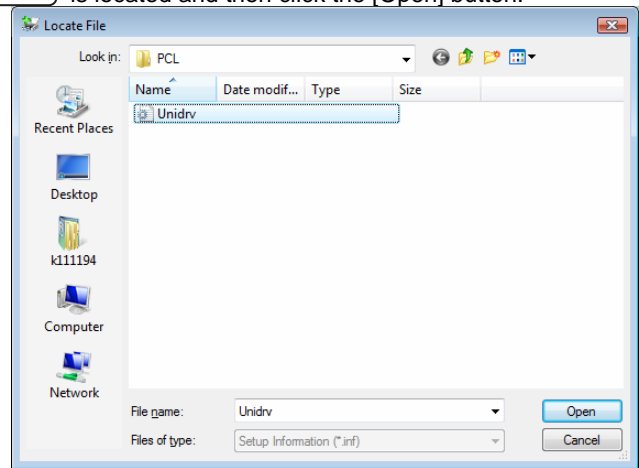
- 7** Click the [Have Disk] button.



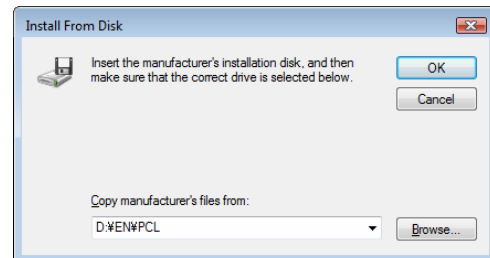
- 8** Click the [Browse] button.



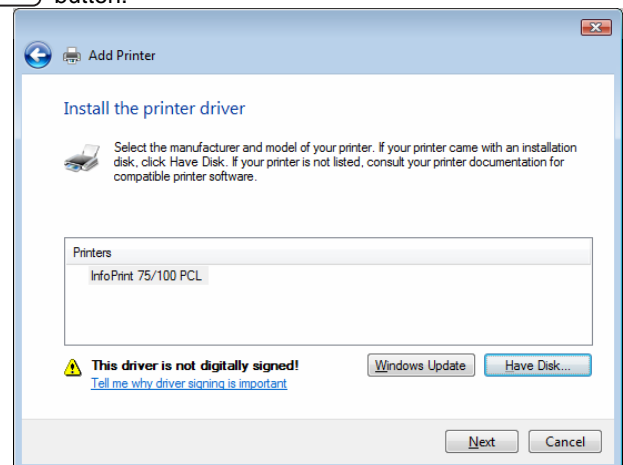
- 9** Move to the folder in which the PCL5 Printer Driver is located and then click the [Open] button.



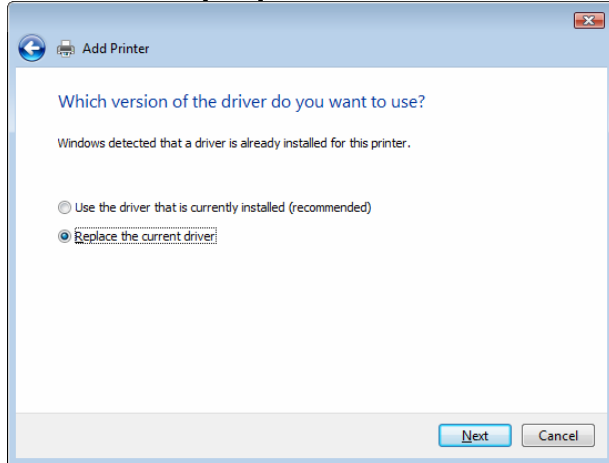
- 10** Click the [OK] button.



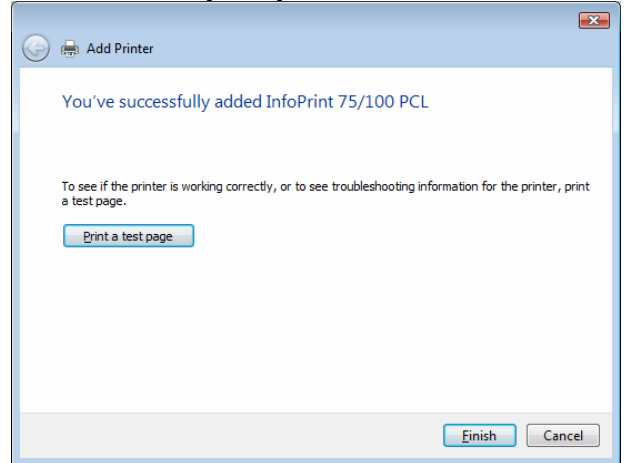
- 11** Select the printer model, and then click the [Next] button.



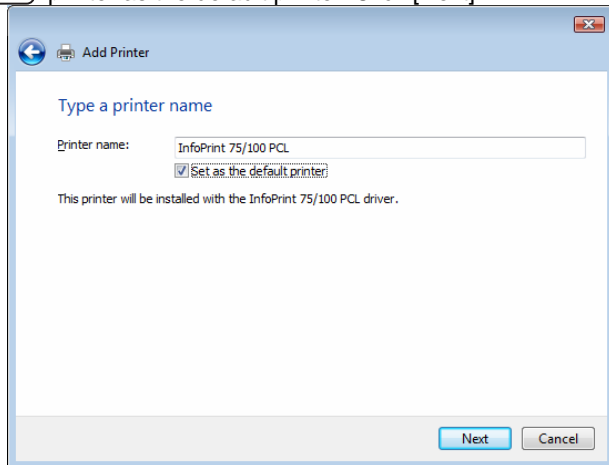
12 When the dialog as shown in the following diagram is displayed, select [Replace the current driver], and then click [Next].



15 To confirm that the printer is set up and the printer driver is installed properly, click [Print a test page] and then click [Finish].

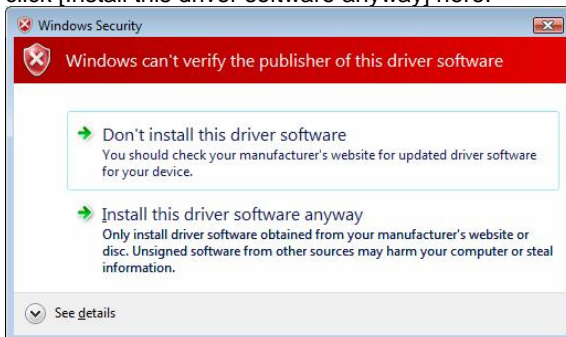


13 Type a [Printer Name]. Select if you want to use the printer as the default printer. Click [Next].



When the [User Account Control] dialog is displayed for verifying the user account before adding a printer, click [Continue].

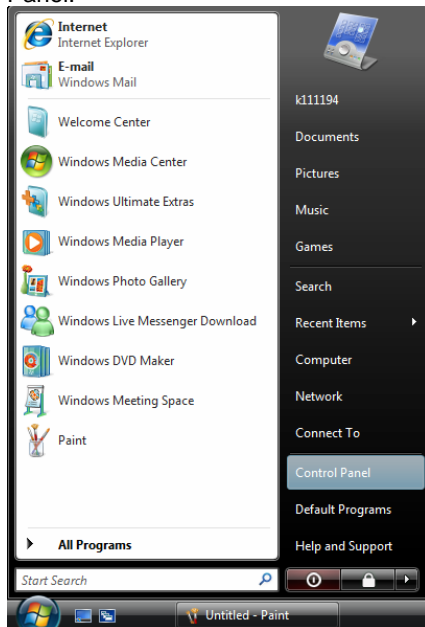
14 When the [Windows Security] dialog as shown in the diagram below pops up as a result of verifying the publisher of this driver software, click [Install this driver software anyway] here.



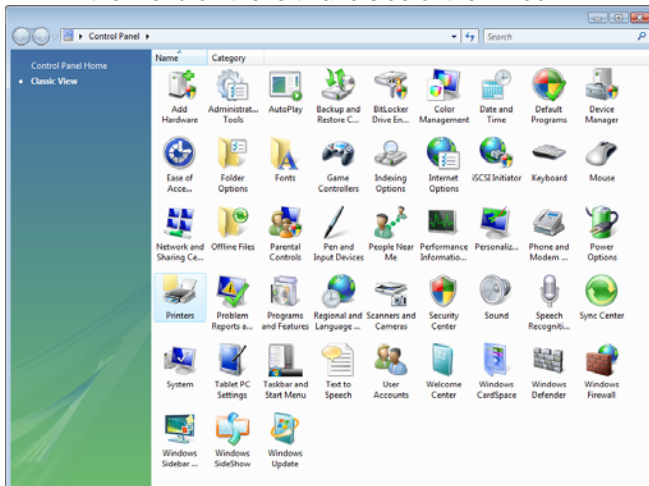
2.4 Displaying Properties

To view printer [Properties], follow the steps outlined below:

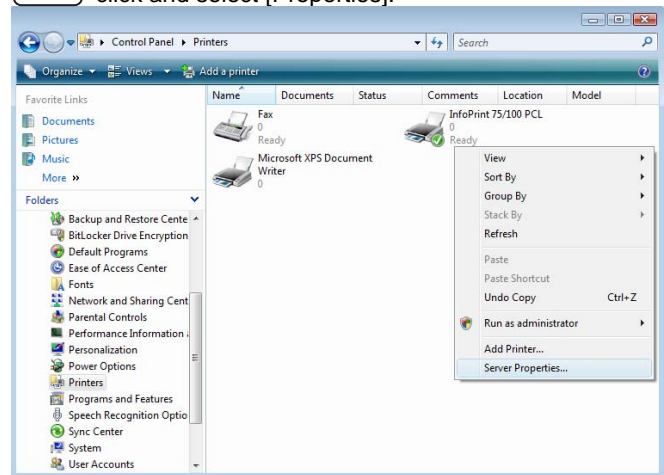
- 1** Select [Start] - [Control Panel] and open the Control Panel.



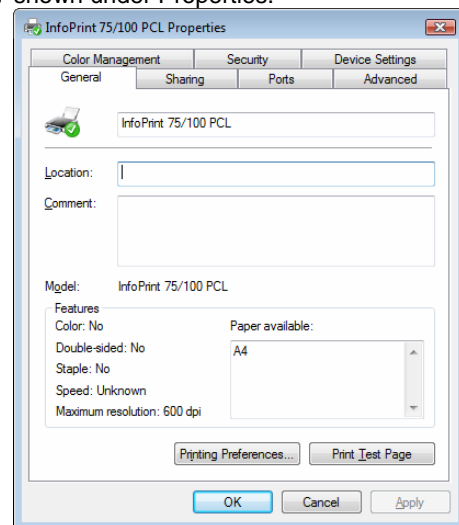
- 2** Double click on the [Printer] icon. When the [Printer] icon is not displayed, select [Classic View] from the menu on the left hand side of the window.



- 3** Place the mouse pointer on the printer icon. Right click and select [Properties].



- 4** Click [General] or [Sharing] tab to switch the view shown under Properties.

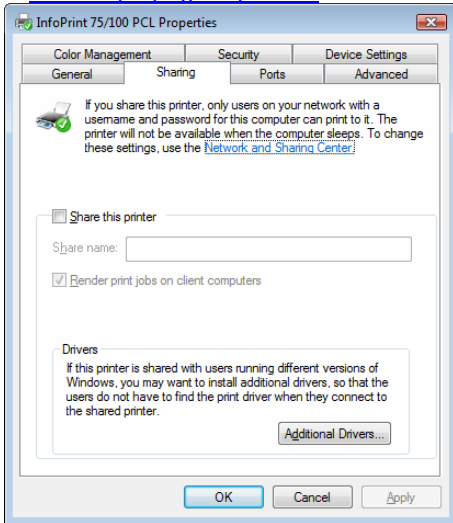


- NOTE** For [Sharing], see ["2.5 Printer Sharing"](#); for [Port], see ["2.6 Changing Print Port"](#).

2.5 Printer Sharing

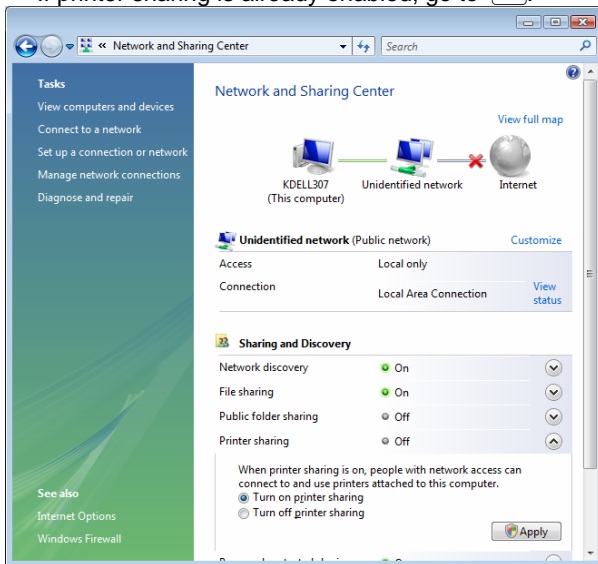
To print from another client computer connected to a network via computer running Windows Vista, use the printer [Sharing] function.

- 1 Log on with the user name with Administrator privileges.
- 2 View [Sharing] properties, following the steps outlined in ["2.4 Displaying Properties"](#)



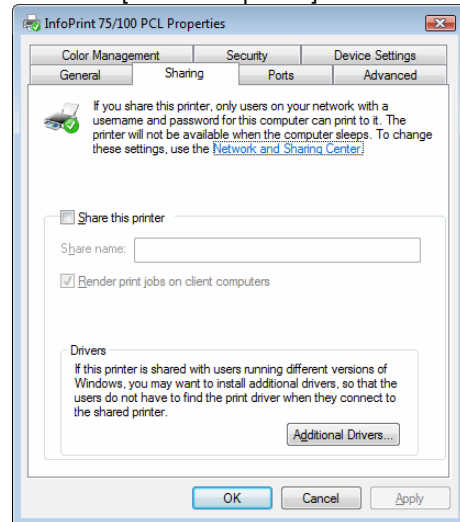
- 3 Select [Network and Sharing Center] and open the Control Panel. Open details of [Printer Sharing] from the [Sharing and Discovery] list and select [Turn on printer sharing]. Click the [Apply] button on the lower right side of the window to close the dialog.

If printer sharing is already enabled, go to 4.



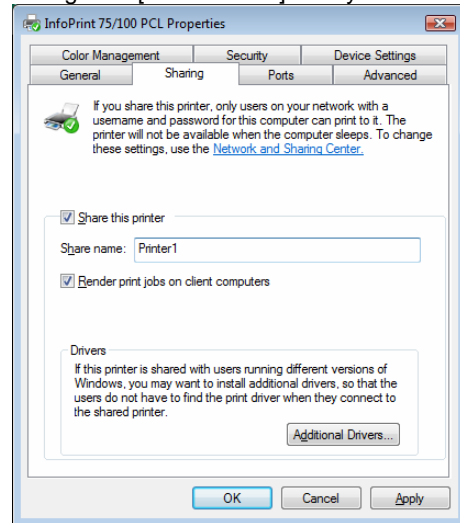
When the [User Account Control] dialog is displayed for checking the user account after clicking [Apply] under [Network and Sharing Center], click [Continue].

- 4 Return to the [Sharing] properties dialog again and check the [Share this printer] to turn ON.



When the [User Account Control] dialog is displayed for checking the user account after checking [Share this printer], click [Continue].

- 5 Select [Share this printer] and click [OK]. You can change the [Share Name] to any name.



Sharing printer will be made available as a shared printer on the network. The shared printer on Windows receives data to be printed from a client computer and sends this printing data to the port specified in the [Port] properties.

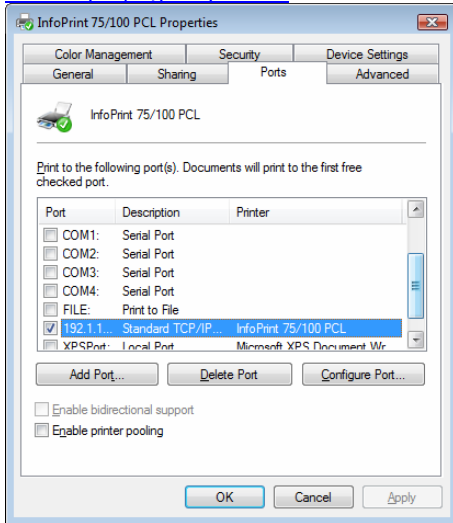
To print from the client computer via a shared printer on Windows, you need to log on to Windows and to connect to a network which has shared printers.

2.6 Changing Print Port

If you need to change the printer destination due to a change in IP address or something similar, or you save data generated by a printer driver in a file, use the following steps to change the printer connection port.

1 Log on with the user name with Administrator privileges.

2 Display [Ports], following the steps outlined in "[2.4 Displaying Properties](#)"



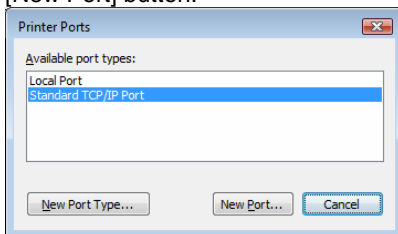
3 Select the connection port from the [Print Port] list and click the [OK] button to close properties.

! POINT To save printing data generated by the printer driver in a file, select [FILE]. To add a new connection port, click [Add Port].

2.6.1 Adding New LPR Port

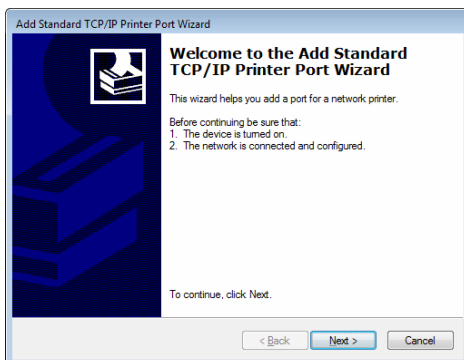
1 Click [Add Port] under [Port] properties.

2 Select [Standard TCP/IP Port], and then click the [New Port] button.

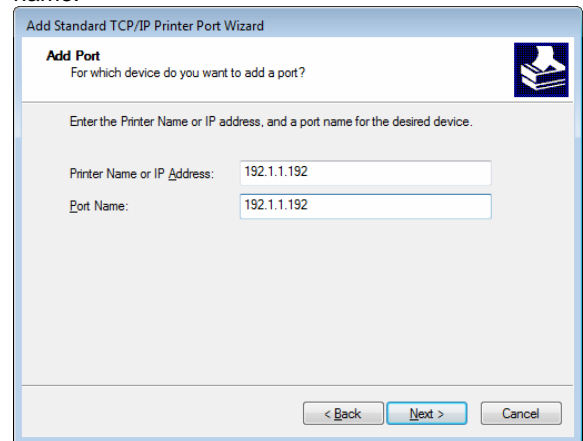


! POINT Even if [LPR Port] is displayed in the list, be sure to select [Standard TCP/IP Port].

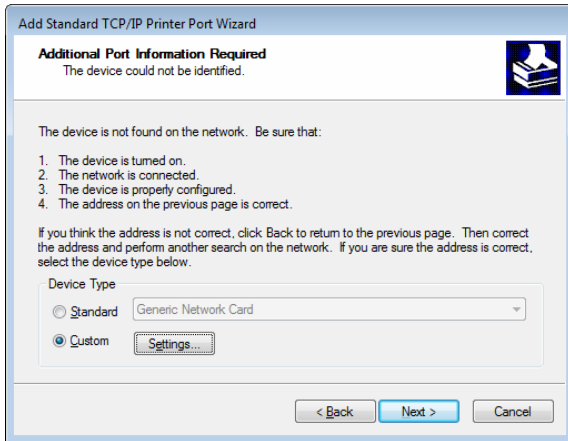
3 Click the [Next] button.



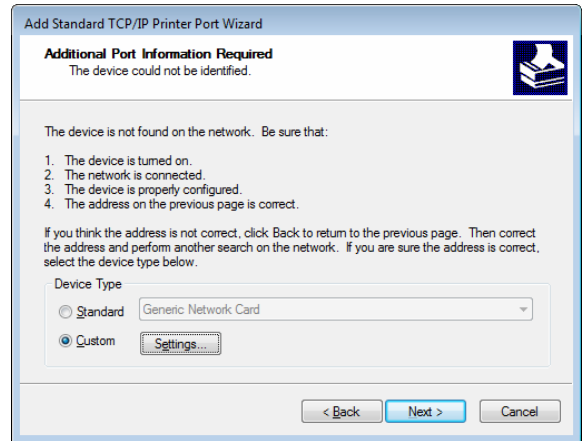
4 Enter the printer's IP address in the [Printer Name or IP Address] field, and then click the [Next] button. Under [Port Name], you can also change to any name.



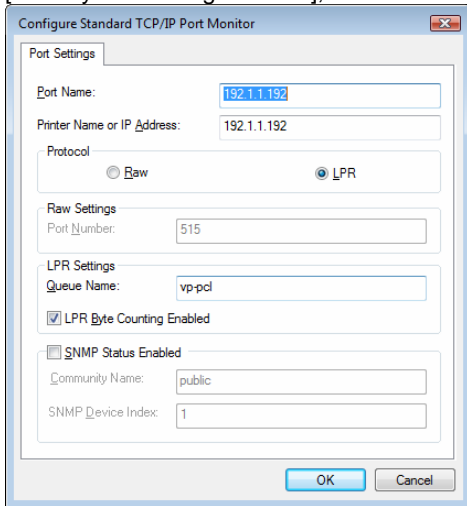
5 Select [Custom], and then click the [Settings] button.



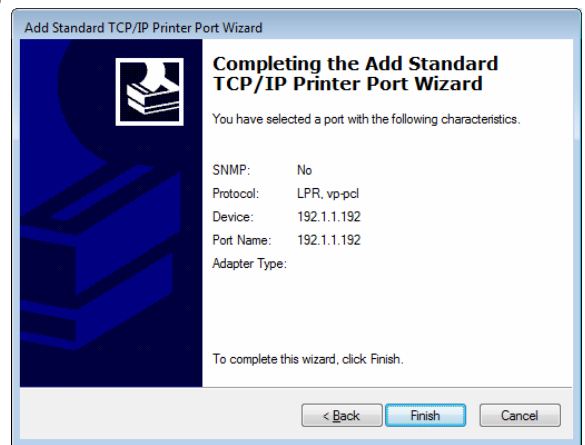
7 Click the [Next] button.



6 Under [Protocol], select [LPR]. Enter the logical printer name in [Queue Name] and turn on (check) [LPR Byte Counting Enabled], and then select [OK].

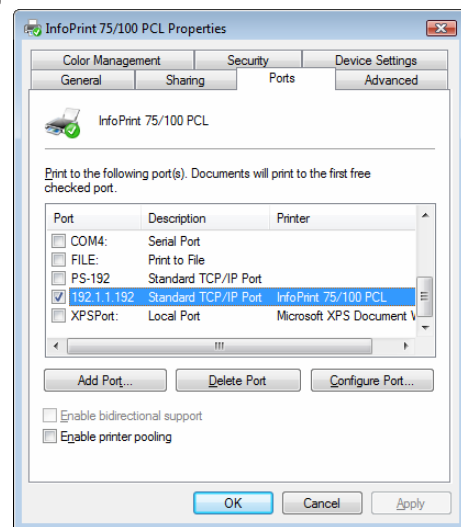


8 Click the [Finish] button.



! POINT The logical printer is configured on the printer unit. The logical printer such as “vp-pcl” is pre-defined. Use “vp-pcl” as the logical printer name in factory default settings. Enter “vp-pcl” in lower-case alphabetic letters. For information about how to configure the network printer, see the “User’s Guide” that came with the printer.

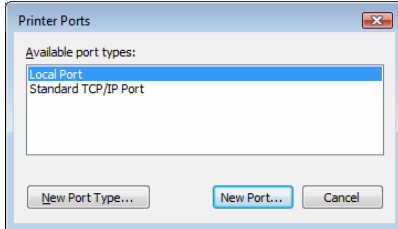
9 Click the [OK] button to close the [Ports] dialog.



2.6.2 Printing Via Print Server

1 Click [Add Port] under [Ports] properties.

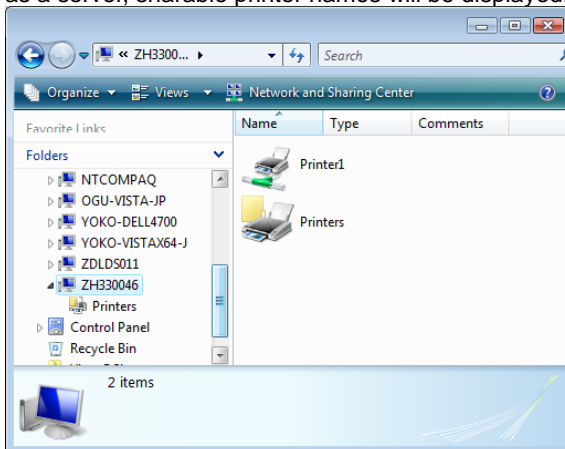
2 Select [Local Port], and then click the [New Port] button.



3 Enter [Port Name] in the format of \backslash Server Name \backslash Shared Printer Name. In the following example, the server name is ZH330046 and the shared printer name as Printer1.

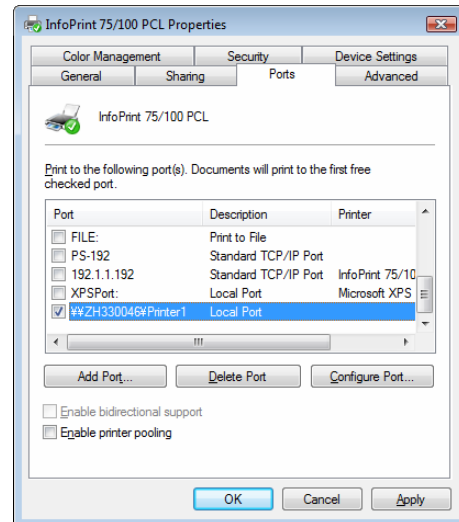


POINT To check the server name and shared printer name that can be entered as port name, start [Network] on the Start menu. Locate the computer that can serve as a server from [Network]. When you double-click the icon to open the computer serving as a server, sharable printer names will be displayed.



4 Click the [OK] button to close the [Port Name] dialog.

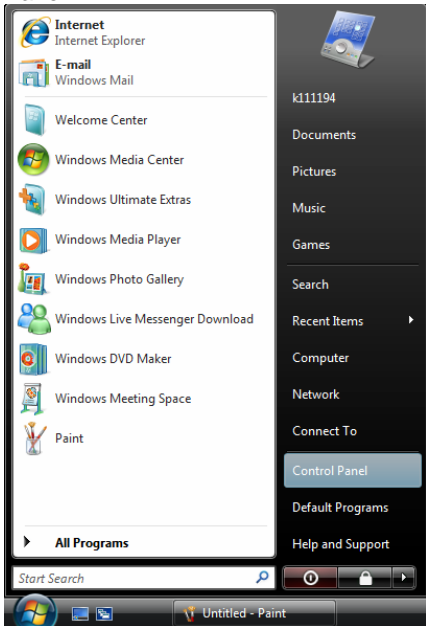
5 Click the [OK] button to close the [Ports] dialog.



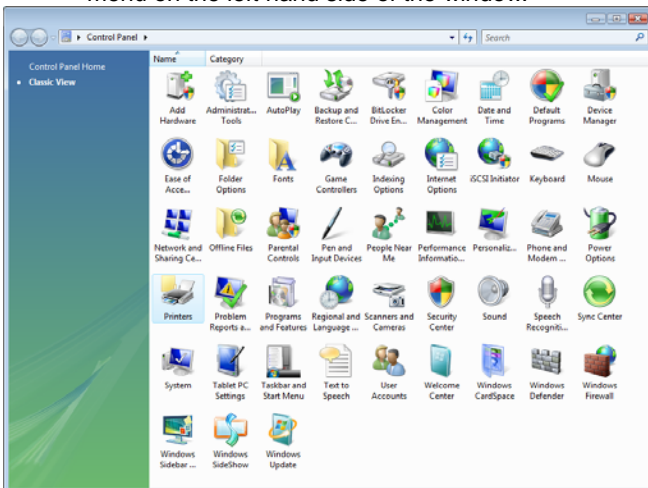
2.7 Changing Printer Driver Default Values

Use the following steps to change the printer driver default value and save it as a new default value: When you print from application software, the printer driver setting configured here becomes a default value.

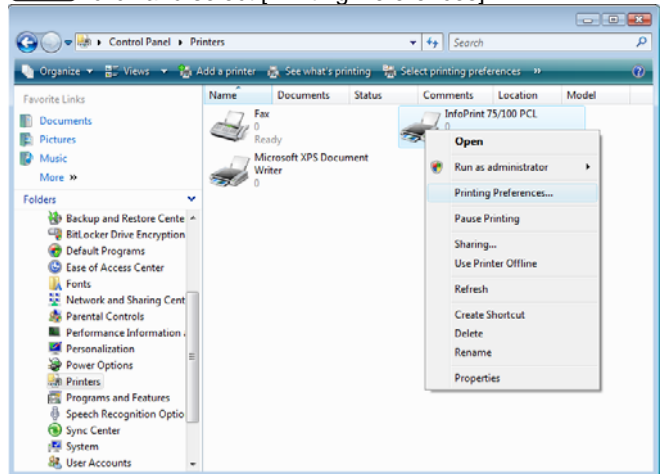
- 1 Select [Start] - [Control Panel] and open the Control Panel.



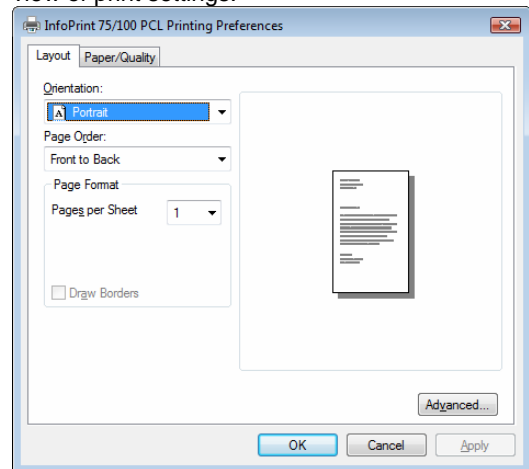
- 2 Double click on the [Printer] icon. When the [Printer] icon is not displayed, select [Classic View] from the menu on the left hand side of the window.



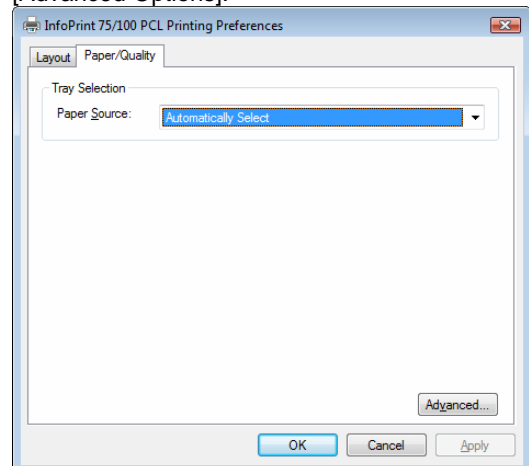
- 3 Place the mouse pointer on the printer icon. Right click and select [Printing References].



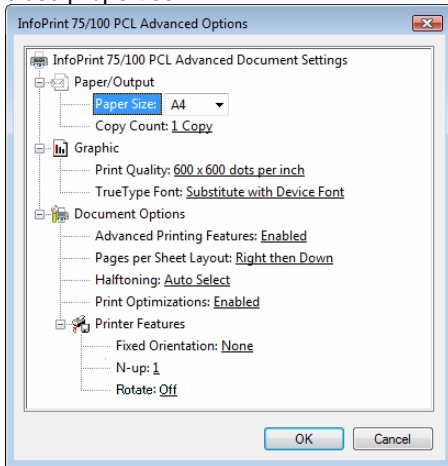
- 4 Click [Layout] or [Paper/Quality] tab to switch the view of print settings.



- 5 Clicking the [Advanced] button displays the [Advanced Options].



- 6** To save settings, click the [OK] button and close properties.



- POINT** For details of each item, see explanations in ["4.1 Printer-Specific Functions"](#).

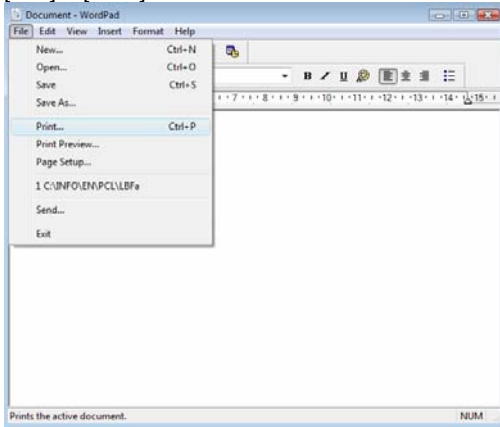
2.8 Printing from Application Software

Use the following steps to change the printer driver settings when printing from application software:



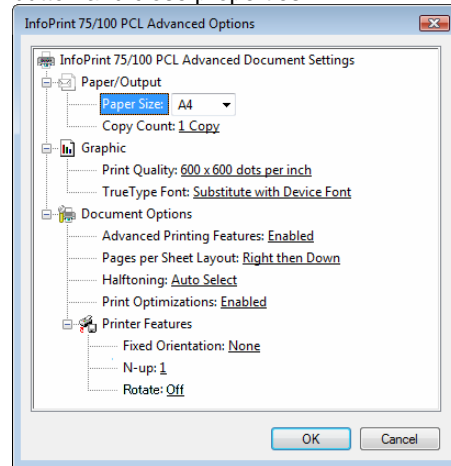
This section gives an example of printing using WordPad that comes with Windows Vista. The view on the menu or in the dialog box varies depending on the application software being used. For more information, see the relevant application software manual.

- 1 Start the application software and select [File] – [Print].

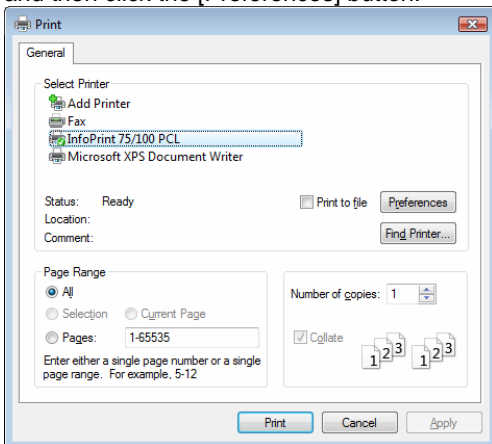


For details of each item, see explanations in ["4.1 Printer-Specific Functions"](#).

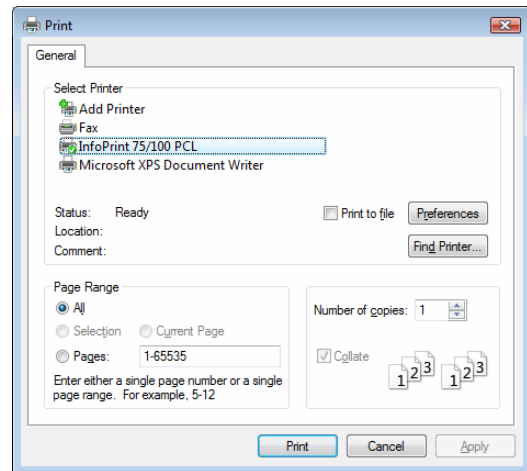
- 4 Change the printer driver settings, click the [OK] button and close properties.



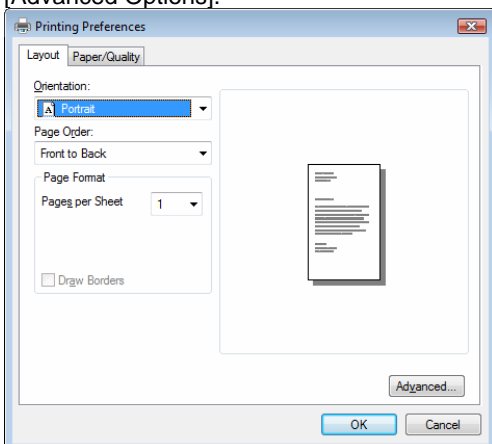
- 2 Click the printer driver from [Select Printer] list, and then click the [Preferences] button.



- 5 Clicking the [Print] button starts the printing operation.



- 3 Clicking the [Advanced] button displays the [Advanced Options].



Chapter 3

Print from Windows 2000/XP/Server 2003

OG	A	00	
----	---	----	--

Chapter 3 Print from Windows 2000/XP/Server 2003

To print from Windows 2000/XP/Server 2003, you need to install the printer driver on the computer before starting operation. Use the following steps to check connection with a printer and install the printer driver:

3.1 Checking Connection with Printer

To print directly to the printer from Windows via a network, you need to build a TCP/IP environment for Windows and configure the LPR port settings. Check Windows network settings and connection between the printer and computer before installing the printer driver. The diagrams (screens) used here give an example of Windows XP.

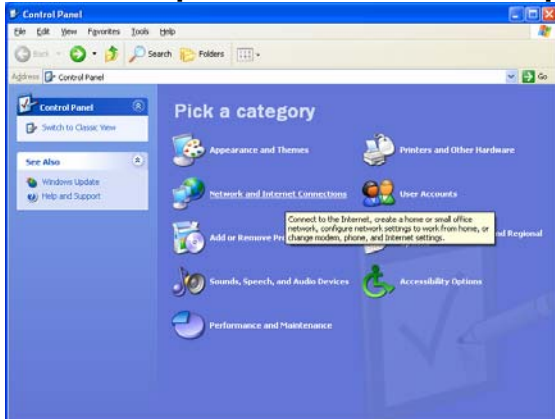


For information about how to configure the network for a printer unit, see the “User’s Guide” that comes with the printer. Alternatively, to print to the printer from Windows via network, you can print via a Windows shared printer other than the LPR printing described in this chapter.

- 1 Connect the printer and the computer to a network and turn on the printer.
- 2 Start Windows and log on with the user name with Administrator privilege.
- 3 First check Windows TCP/IP settings.
For Windows XP:
 Select [Start] - [Control Panel] and open the Control Panel.



Double-click on [Network and Internet Connections].



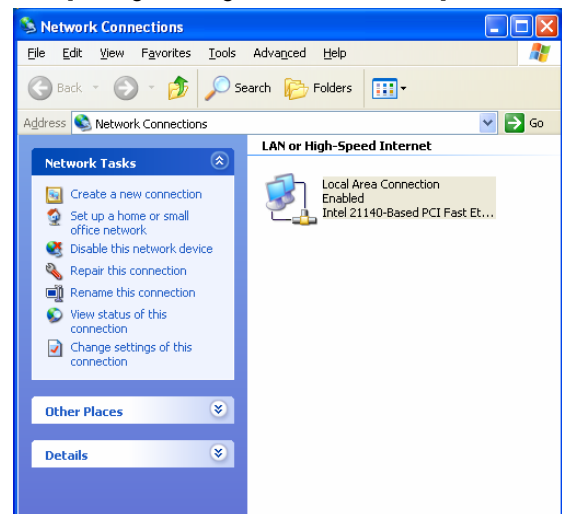
For Windows 2000:

Select [Start] – [Settings] – [Network and Dialup Connections].

For Windows Server 2003:

Select [Start] - [Control Panel] and open the network connection.

- 4 **For Windows XP:**
 Click [Network Connections].
 Then select the [Local Area Connection] icon.
 Under [Network Tasks],
 click [Change settings of this connection].



For Windows 2000/Server 2003:

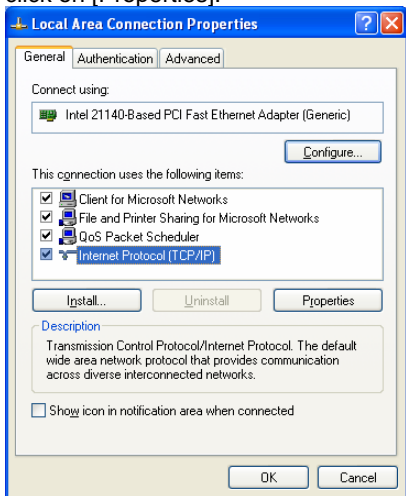
Double click on the [Local Area Connection] icon.

- 5 **For Windows XP:**
 Go to 6.

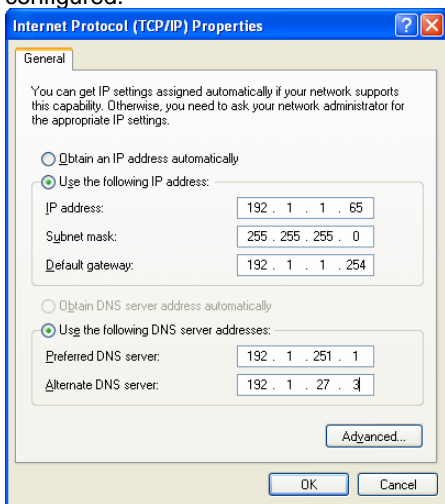
For Windows 2000/Server 2003:

Click the [Properties] button.

6 Select [Internet Protocol (TCP/IP)] from the list and click on [Properties].



7 Make sure [IP address] settings have been properly configured.



NOTE For details on how to configure Windows such as the IP address, see the Windows manual and Help function or ask your network administrator. For technical information about TCP/IP, see commercially available publications.

8 Next, make sure that TCP/IP communication between the printer and Windows is enabled.

For Windows XP/Server 2003:

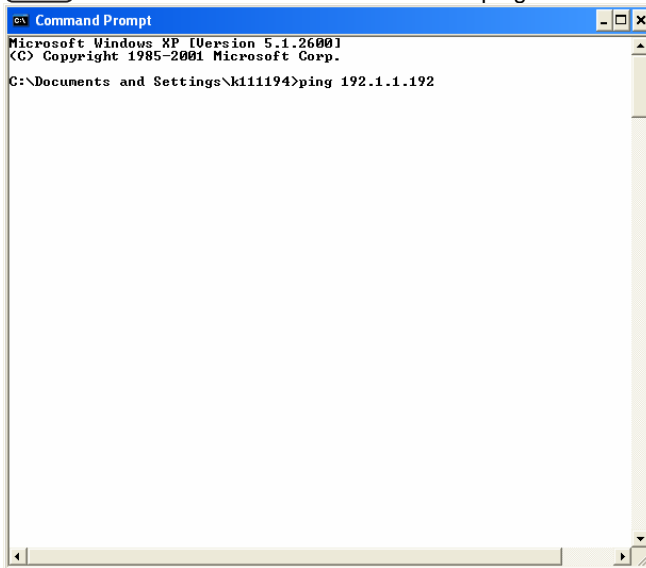
Select [Start] – [All Programs] – [Accessories] – [Command Prompt].



For Windows 2000:

Select [Start] – [Programs] – [Accessories] – [Command Prompt].

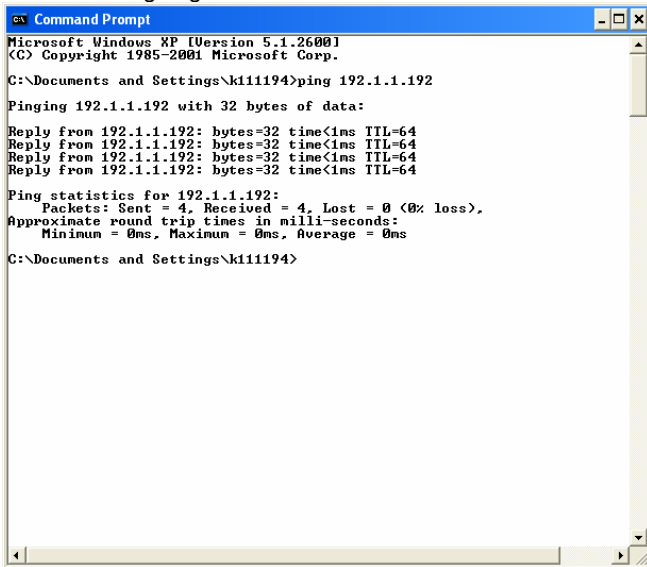
9 Enter the ping command as shown in the diagram below. Enter the IP address after the ping command.



NOTE For the printer's IP address, check what is displayed after selecting [Information] – [Network] on the control panel of the printer unit.

10 When the [Reply] message is displayed as shown in the diagram, verification of connection is complete. Proceed to installation of the printer driver.

When the “Request timed out” message is displayed, check the printer’s power supply, network cable connection, and printer’s or computer’s TCP/IP settings again.



```
Microsoft Windows XP [Version 5.1.2600]
(C) Copyright 1985-2001 Microsoft Corp.

C:\Documents and Settings\k111194>ping 192.1.1.192

Pinging 192.1.1.192 with 32 bytes of data:

Reply from 192.1.1.192: bytes=32 time<1ms TTL=64
Reply from 192.1.1.192: bytes=32 time<1ms TTL=64
Reply from 192.1.1.192: bytes=32 time<1ms TTL=64
Reply from 192.1.1.192: bytes=32 time<1ms TTL=64

Ping statistics for 192.1.1.192:
    Packets: Sent = 4, Received = 4, Lost = 0 (0% loss),
    Approximate round trip times in milli-seconds:
        Minimum = 0ms, Maximum = 0ms, Average = 0ms

C:\Documents and Settings\k111194>
```

POINT Configure LPR port settings when installing the printer driver.

3.2 Installing Printer Driver

You can install the PCL5 Printer Driver for Windows 2000/XP/Server 2003. Before installing the PCL5 Printer Driver, prepare the driver related files by downloading from dedicated Web site. Use the following steps to install the printer driver: The diagrams (screens) used here give an example of Windows XP.

1

Start Windows.
Make sure that the printer is turned on.



Log on to Windows with the user name with Administrator privileges.

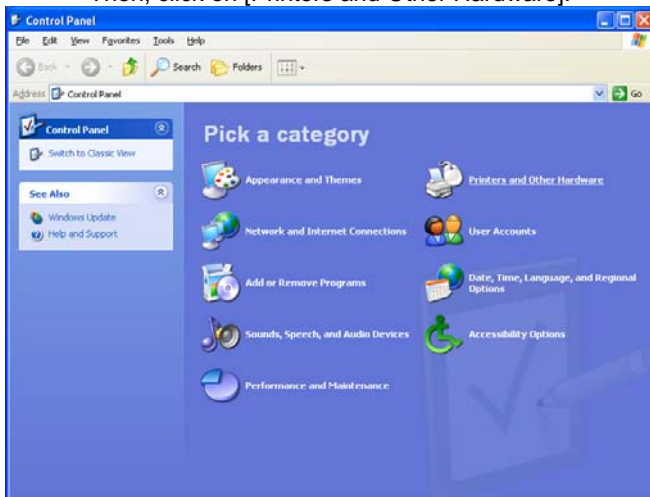
2

For Windows XP:

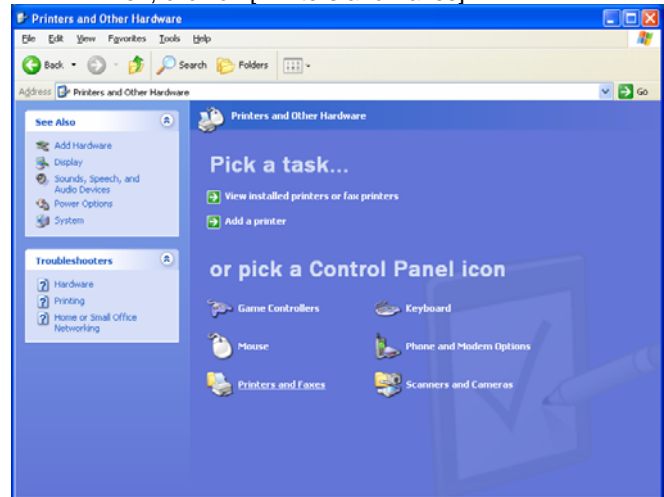
Select [Start] - [Control Panel] and open the Control Panel.



Then, click on [Printers and Other Hardware].



Then, click on [Printers and Faxes]



For Windows 2000:

Select [Start] – [Settings] – [Printers].

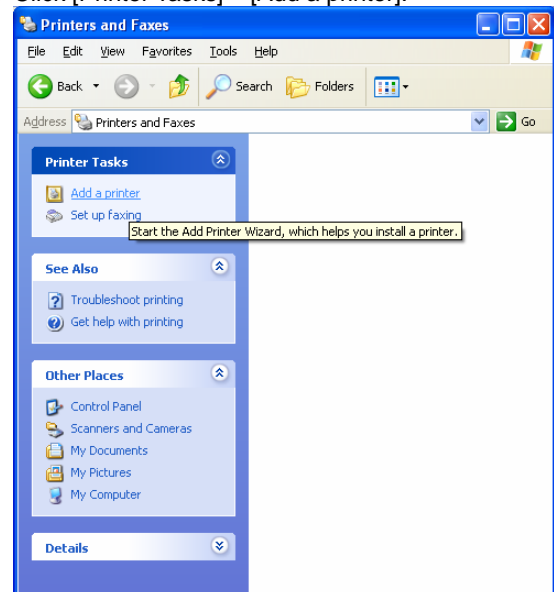
For Windows Server 2003:

Select [Start] - [Control Panel] – [Printers and Faxes], and then open Printers and Faxes.

3

For Windows XP:

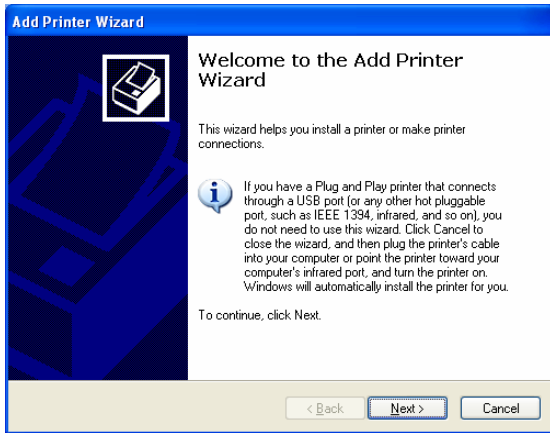
Click [Printer Tasks] – [Add a printer].



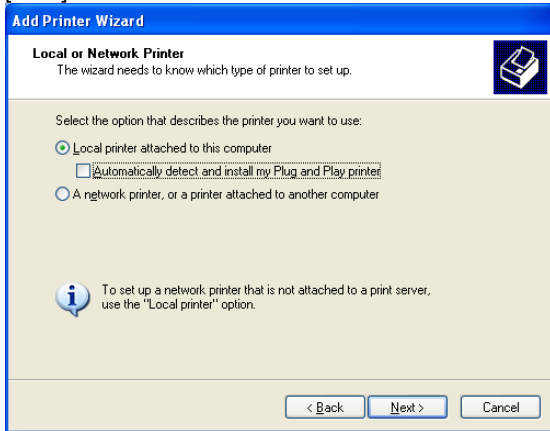
For Windows 2000/Server 2003:

Double click the [Add Printer] icon.

4 Click the [Next] button.



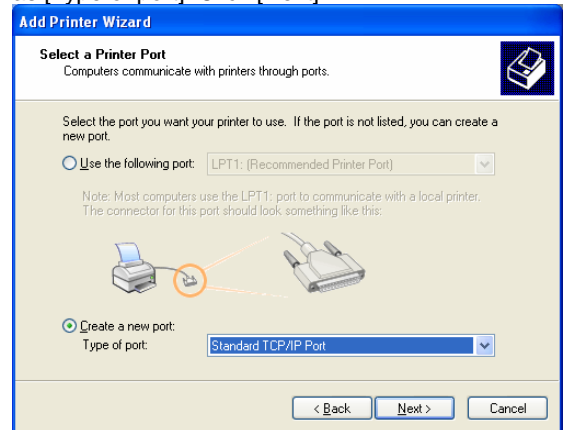
5 Select [Local Printer] and uncheck [Automatically detect and install my Plug and Play printer]. Click [Next].



POINT You can also select [Network Printer] but select [Local Printer] here even if you use a printer by connecting to a network.

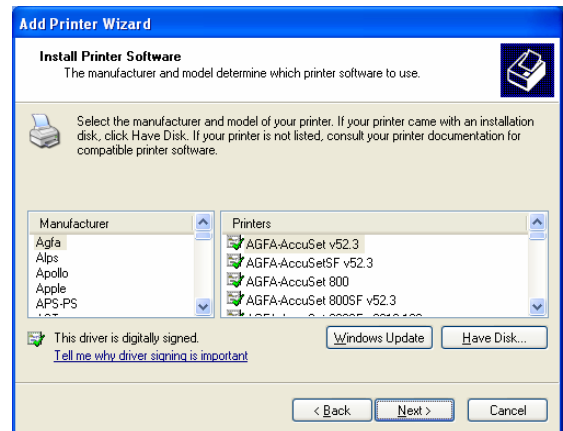
NOTE To configure settings for printers that are plugged into other computers and shared on the network, select [Network Printer]. Computers and printers on the network are located and displayed in tree format. Select the computer and shared printer to be used. It may take time to locate depending on the network environment.

6 Select printer connection port, and then click [Next]. To add a new connection port, select [Create a new port] and select [Standard TCP/IP Port] as [Type of port]. Click [Next].

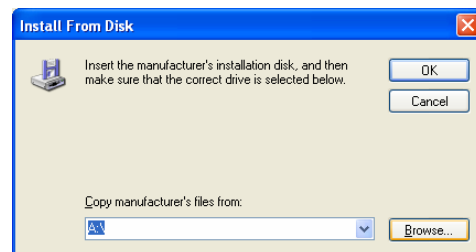


POINT To add an LPR port (Standard TCP/IP Port), see ["3.1 Checking Connection with Printer"](#), and ["3.5.1 Adding New LPR Port"](#). You can also change the connection port settings after finishing installation of the printer driver. See ["3.5 Changing Print Port"](#).

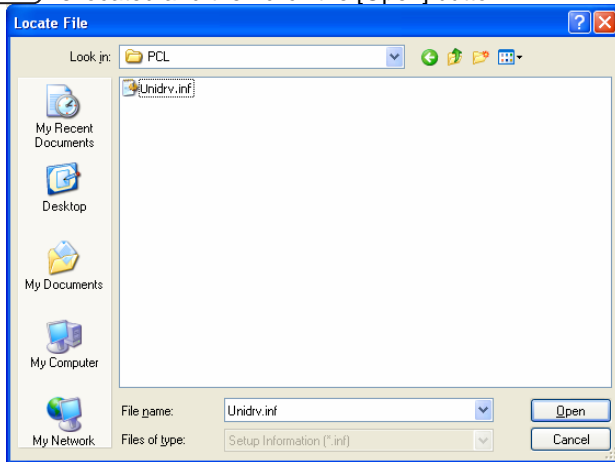
7 Click the [Have Disk] button.



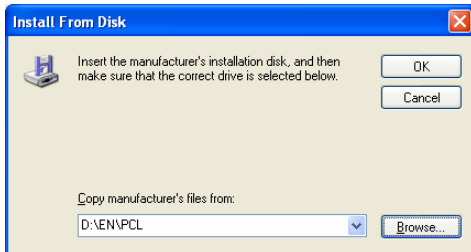
8 Click the [Browse] button.



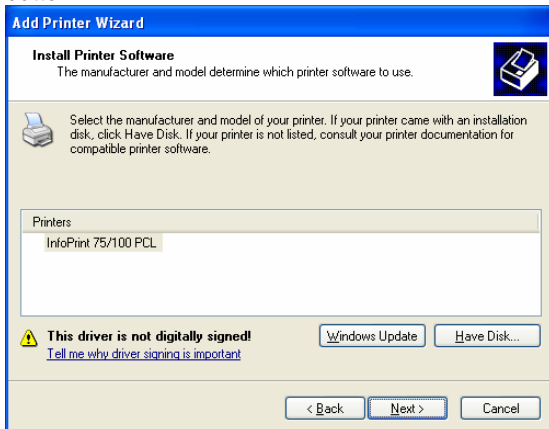
- 9** Move to the folder in which the PCL5 Printer Driver is located and then click the [Open] button.



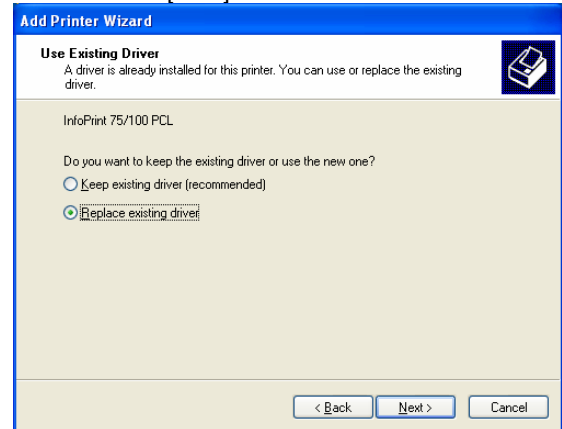
- 10** Click the [OK] button.



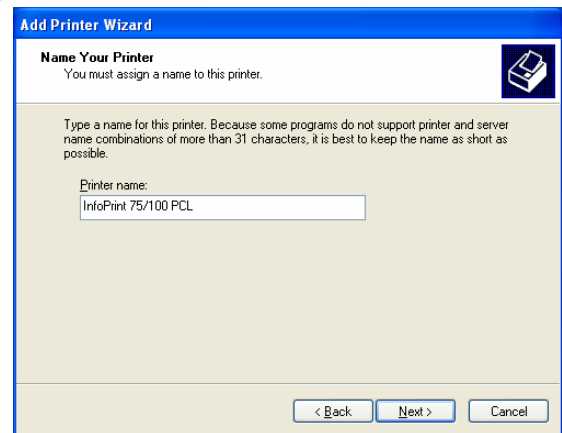
- 11** Select the printer model, and then click the [Next] button.



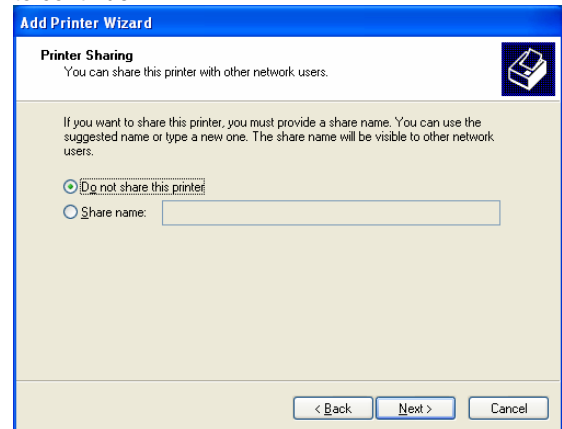
- 12** When the dialog box as shown in the following diagram is displayed, click [Replace existing driver], and then click [Next].



- 13** Enter the [Printer Name]. Click [Next] to continue.

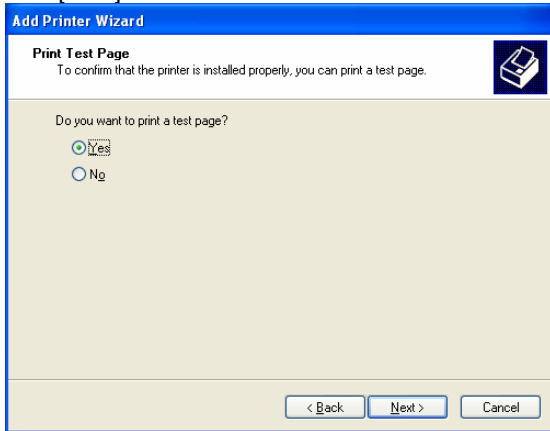


- 14** Select [Do not share this printer]. Click [Next] to continue.

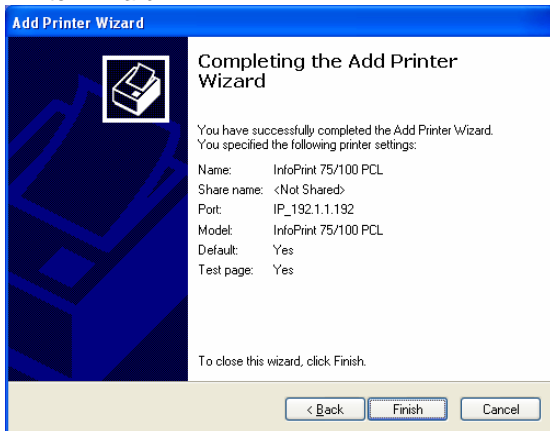


! POINT You can also configure printer sharing after finishing installation of the printer driver.

- 15** To confirm that the printer is set up and the printer driver is installed properly, select [Yes], and then click [Next] to continue.



- 16** Click on the [Finish] button to complete the Add Printer Wizard.



- 17** For Windows 2000, the [Digital Signature Not Found] dialog box is displayed. Click [Yes]. For Windows XP/Server 2003, the [Install Hardware] dialog box is displayed. Click [Continue]. The file is copied here and the printer icon is added to the [Printer] folder.

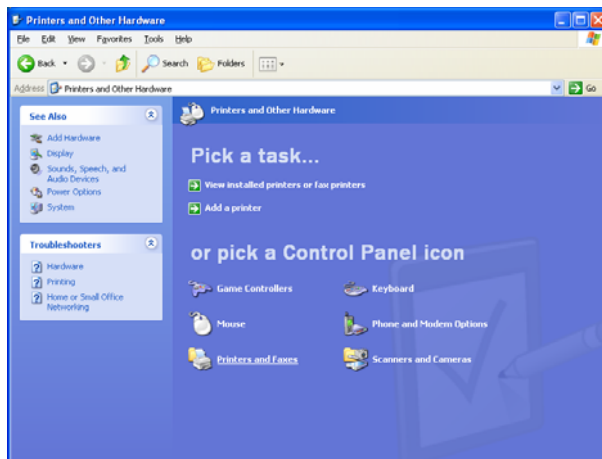
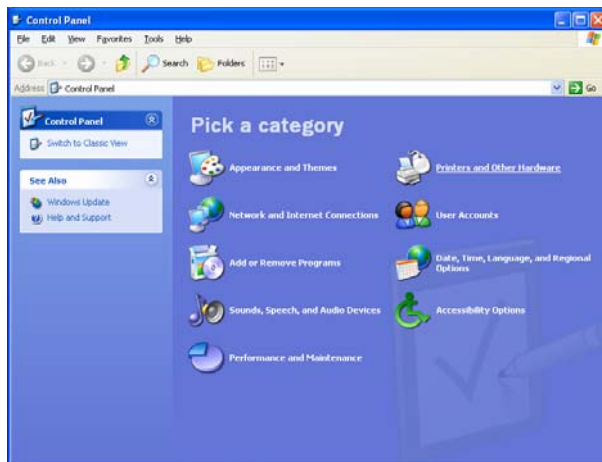
3.3 Displaying Properties

To view printer [Properties], follow the steps outlined below: The diagrams (screens) used here give an example of Windows XP.

1

For Windows XP:

Select [Start] - [Control Panel] and open the Control Panel. Next, click on [Printers and Other Hardware]. Then, click on [Printers and Faxes].



For Windows 2000:

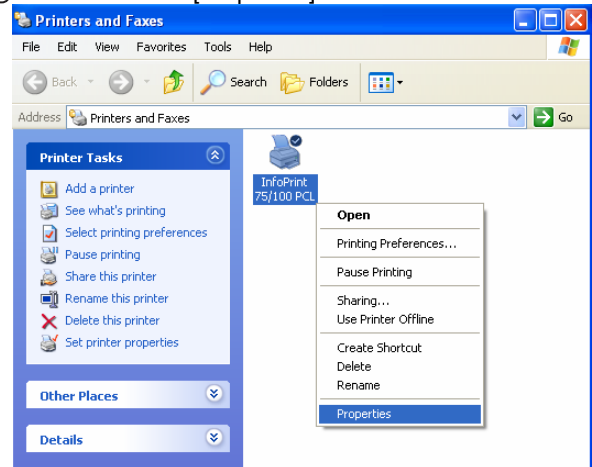
Select [Start] – [Settings] – [Printers].

For Windows Server 2003:

Select [Start] - [Control Panel] – [Printers and Faxes], and then open Printers and Faxes.

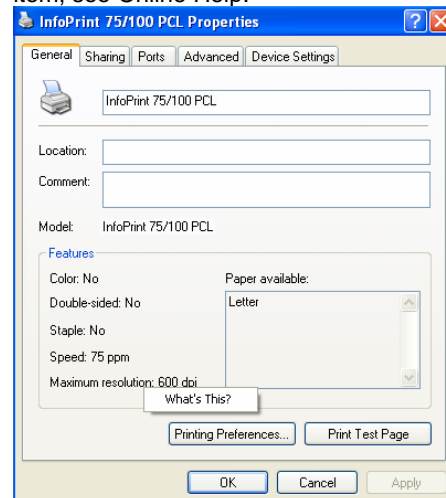
2

Place the mouse pointer on the printer icon. Right click and select [Properties].



3

Click [General] or [Sharing] tab to switch the view shown under Properties. For an explanation of each item, see Online Help.



To view Online Help, place the mouse pointer over the item. Right click and select [Help].



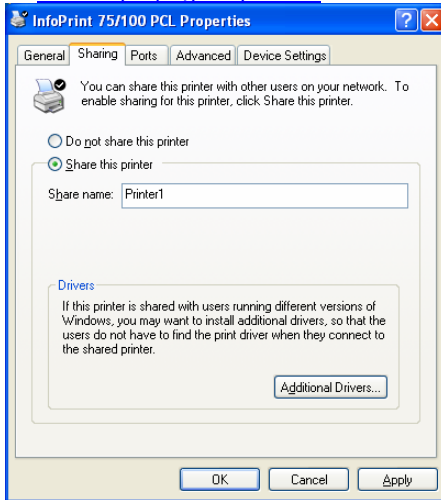
For [Sharing], see ["3.4 Printer Sharing"](#); for [Port], see ["3.5 Changing Print Port"](#).

3.4 Printer Sharing

To print from another client computer connected to a network via a computer running Windows 2000/XP/Server 2003, use the printer [Sharing] function. The diagrams (screens) used here give an example of Windows XP.

1 Log on to Windows with the user name with Administrator privileges.

2 View [Sharing] properties, following the steps outlined in ["3.3 Displaying Properties"](#).



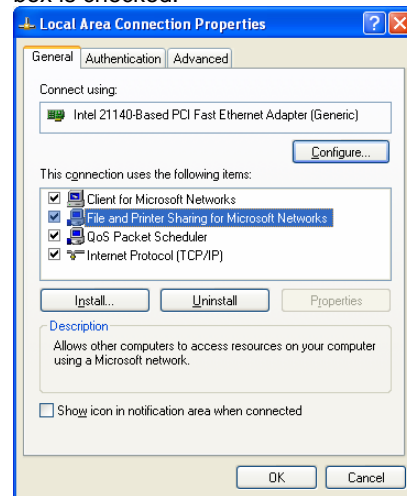
3 Select [Share this printer] and enter the printer's shared name.
The client computer recognizes the name entered here as the "shared printer name".

! POINT Sharing printer will be made available as a shared printer on the network.
The shared printer on Windows receives data to be printed from a client computer and sends this printing data to the port specified in the [Port] properties. To print from the client computer via a shared printer on Windows, you need to log on to Windows and connect to a network which has shared printers.

4 Click [OK] to close Properties.

NOTE Clicking [Additional Drivers] under [Sharing] enables the printer driver to be stored on Windows, so that the printer driver can be automatically downloaded when requested by the client computer.

NOTE If you cannot configure [Sharing] settings, log on to Windows with the user name that has Administrator privileges. Select [Start] – [Settings] – [Network and Dialup Connections] to view [Properties] in [Local Area Connection]. Confirm that [File and Printer Sharing for Microsoft Networks] is included and the box is checked.

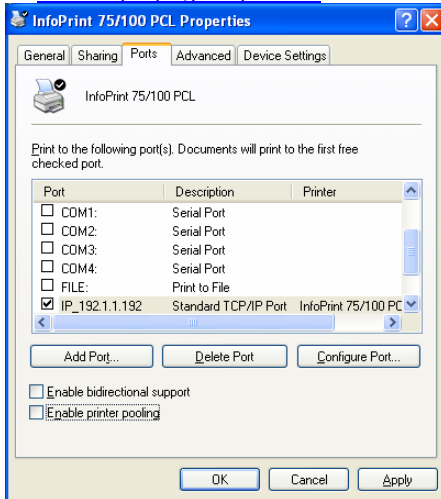


3.5 Changing Print Port

If you need to change the printer destination due to a change in IP address or something similar, or you save data generated by a printer driver in a file, use the following steps to change the printer connection port. The diagrams (screens) used here give an example of Windows XP.

1 Log on to Windows with the user name with Administrator privileges.

2 Display [Ports], following the steps outlined in ["3.3 Displaying Properties"](#).



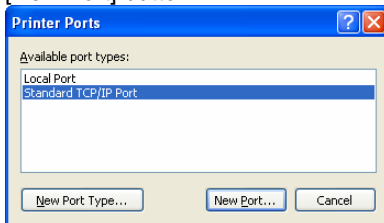
3 Select the connection port from the [Print Port] list and click the [OK] button to close properties.

! POINT To save printing data generated by the printer driver in a file, select [FILE]. To add a new connection port, click [Add Port].

3.5.1 Adding New LPR Port

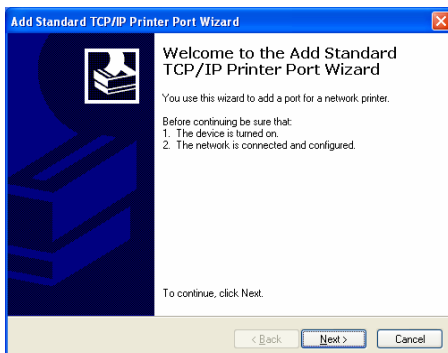
1 Click [Add Port] under [Port] properties.

2 Select [Standard TCP/IP Port], and then click the [New Port] button.

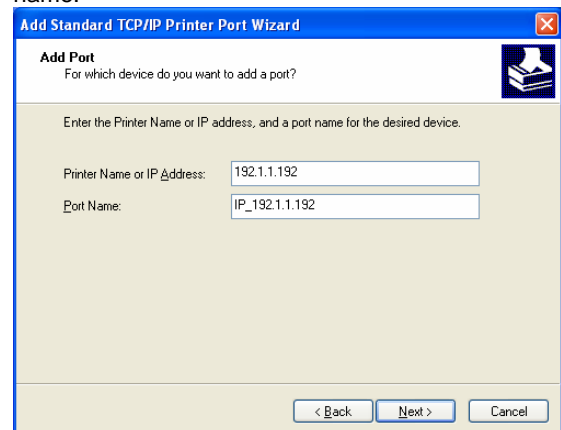


! POINT Even if [LPR Port] is displayed in the list, be sure to select [Standard TCP/IP Port].

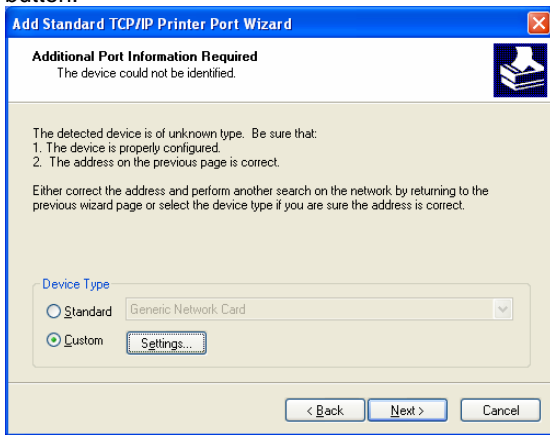
3 Click the [Next] button.



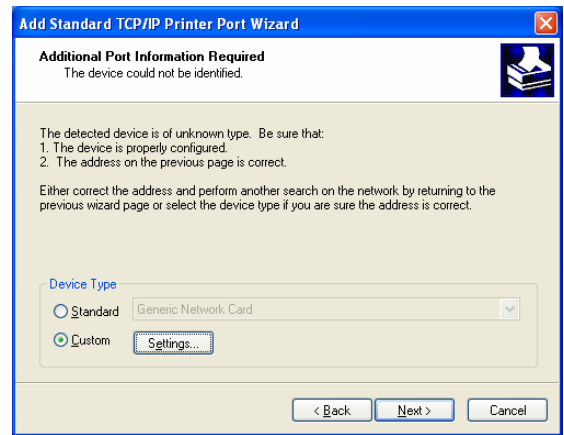
4 Enter the printer's IP address in the [Printer Name or IP Address] field, and then click the [Next] button. Under [Port Name], you can also change to any name.



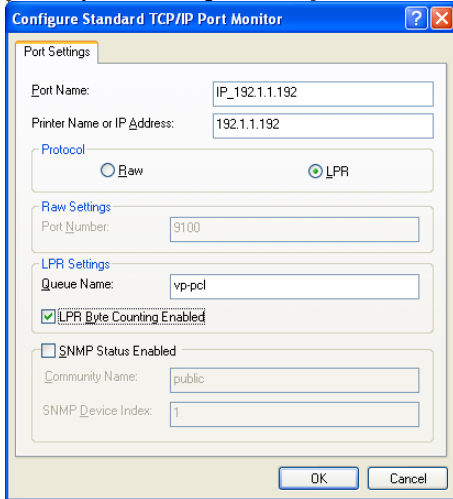
5 Select [Custom], and then click the [Settings] button.



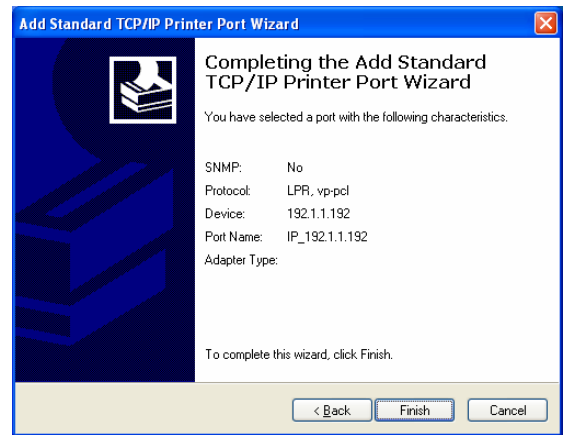
7 Click the [Next] button.



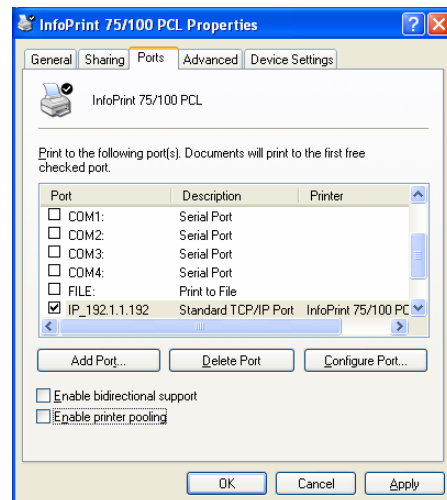
6 Under [Protocol], select [LPR]. Enter the logical printer name in [Queue Name] and turn on (check) [LPR Byte Counting Enabled], and then select [OK].



8 Click on the [Finish] button to complete the wizard.



9 Click the [OK] button to close the [Ports] dialog.

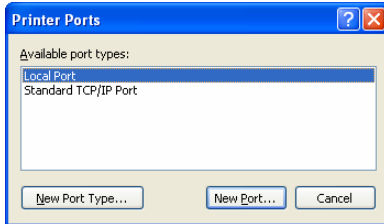


! POINT The logical printer is configured on the printer unit. The logical printer such as “vp-pcl” is pre-defined. Use “vp-pcl” as the logical printer name in factory default settings. Enter “vp-pcl” in lower-case alphabetic letters. For information about how to configure the network printer, see the “User’s Guide” that came with the printer.

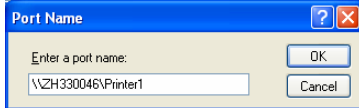
3.5.2 Printing Via Print Server

1 Click [Add Port] under [Port] properties.

2 Select [Local Port], and then click the [New Port] button.

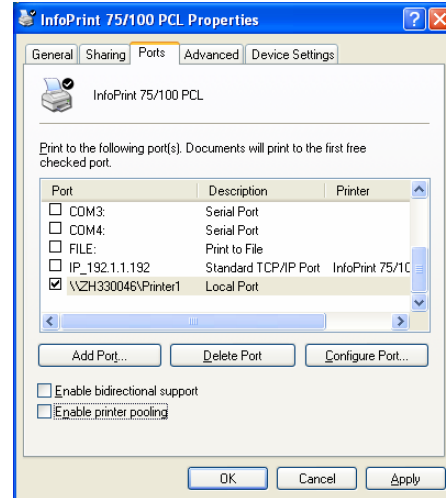


3 Enter [Port Name] in the format of \backslash Server Name \backslash Shared Printer Name. In the following example, the server name is ZH330046 and the shared printer name is Printer1.

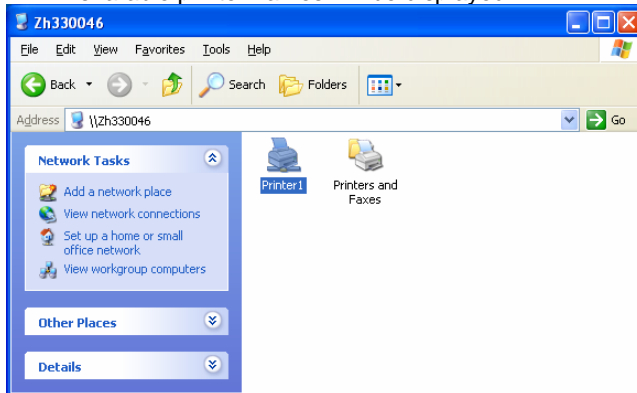


4 Click the [OK] button to close the [Port Name] dialog.

5 Click the [OK] button to close the [Ports] dialog box.



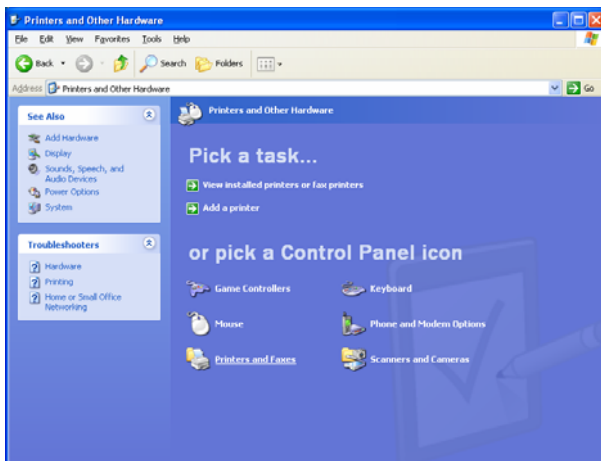
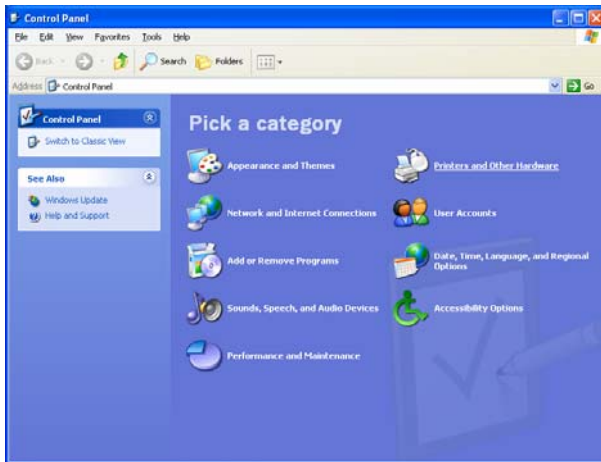
POINT To check the server name and shared printer name that can be entered as port name, use [My Network] on Desktop. Locate the computer that can serve as a server from [My Network]. When you double-click the icon to open the computer serving as a server, sharable printer names will be displayed.



3.6 Changing Printer Driver Default Values

To change printer driver default values, perform the following steps using [Printing Preferences] dialog. The diagrams (screens) used here give an example of Windows XP.

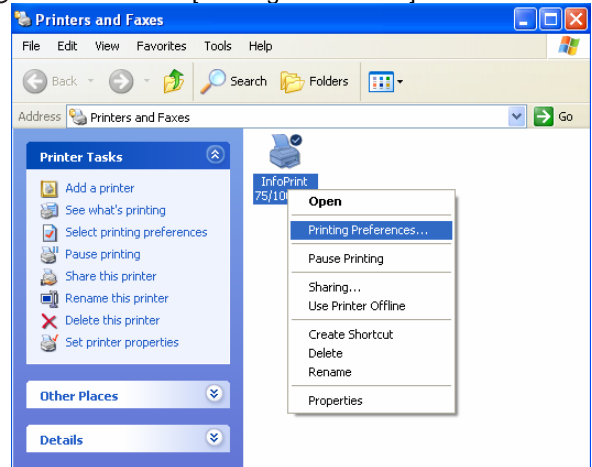
- 1 For Windows XP:** Select [Start] - [Control Panel] and open the Control Panel. Next, click on [Printers and Other Hardware]. Then, click on [Printers and Faxes].



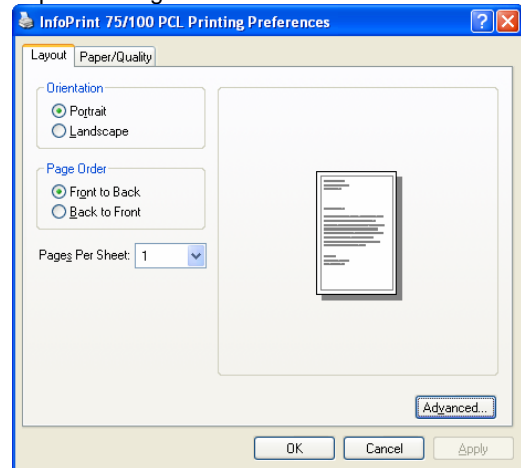
- For Windows 2000:** Select [Start] – [Settings] – [Printers].

- For Windows Server 2003:** Select [Start] - [Control Panel] – [Printers and Faxes], and then open Printers and Faxes.

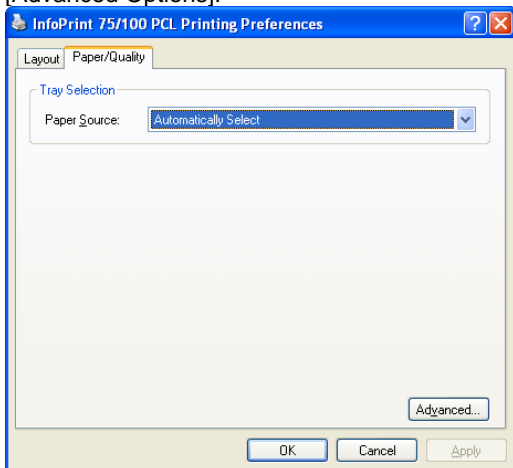
- 2** Place the mouse pointer on the printer icon. Right click and select [Printing Preferences].



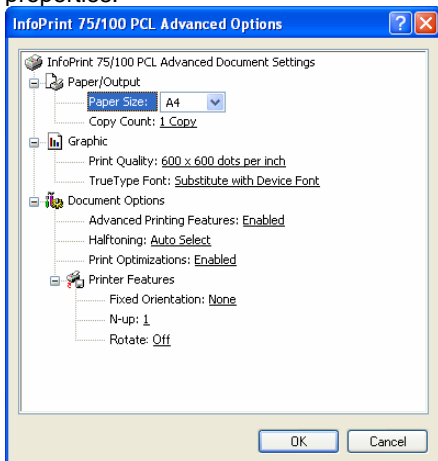
- 3** Click [Layout] or [Paper/Quality] tab to switch the view of print settings.



- 4** Clicking the [Advanced] button displays the [Advanced Options].



- 5** To save settings, click the [OK] button and close properties.



For an explanation of each item, see Online Help. To view Online Help, place the mouse pointer over the item. Right click and select [Help]. For more information, see explanations in ["4.1 Printer-Specific Functions"](#).

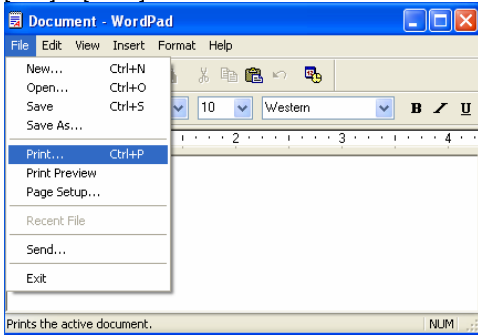
3.7 Printing from Application Software

Use the following steps to change the printer driver settings when printing from application software:

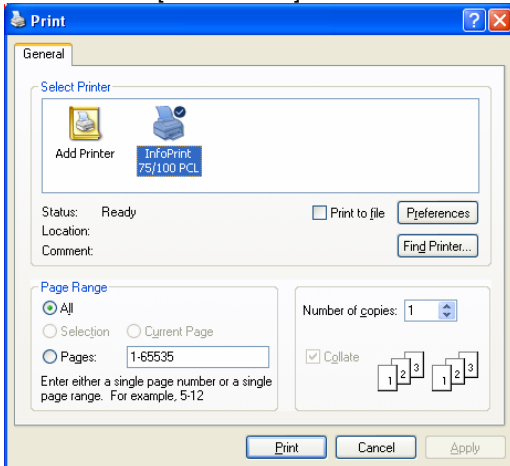


This section gives an example of printing using WordPad that comes with Windows. The view on the menu or in the dialog box varies depending on the application software being used. For more information, see the relevant application software manual.

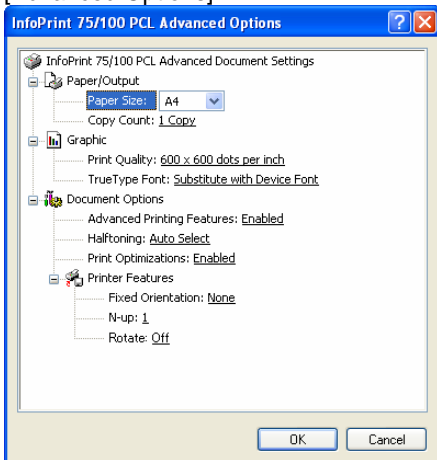
- 1 Start the application software and select [File] – [Print].



- 2 Select the printer driver from the [Select Printer] list, and then click [Preferences].

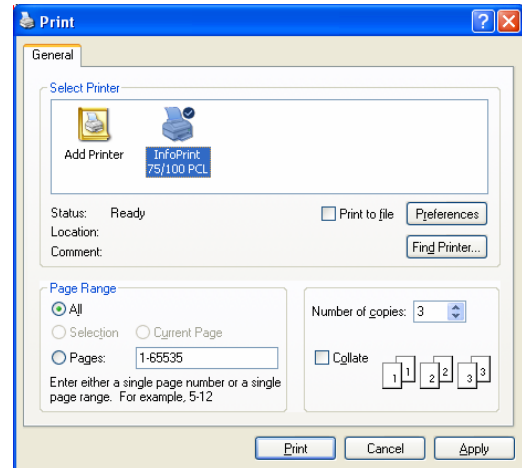


- 3 Clicking the [Preferences] button displays the [Advanced Options].



For an explanation of each item, see Online Help. To view Online Help, place the mouse pointer over the item. Right click and select [Help]. Also, see explanations in ["4.1 Printer-Specific Functions"](#).

- 4 Change the printer driver settings, and then click the [OK] button to close [Advanced Options].
- 5 Clicking the [Print] button starts the printing operation.



Chapter 4

Various Settings of PCL5 Driver

OG	A	00	
----	---	----	--

Chapter 4 Various Settings of PCL5 Driver

Configuring the printer driver settings enables you to print using different functions. This chapter describes various methods for configuring the PCL5 Printer Driver.

4.1 Printer-Specific Functions

This section describes setup items for printer-specific functions.



To view [Printer Functions] in the printer driver, see Chapters 2 and 3 “Changing Printer Driver Default Values” and “Printing from Application Software”.

◇ Paper size (default: A4)

Select the paper size you want to print.



Match [Paper Size] with paper settings on the printer control panel. Care should be taken not to include the length of feeding holes on both edges of the paper (1 inch = 25.4 mm) in [Paper Size]. An example of setting is given below:

Paper Size (inch)	Operator Panel	Printer Driver
	Paper Settings	Paper Size
15 x 11 (Long Edge)		15x11 (14x11) inch In case of definition as custom paper size Width: 14 inch Height: 11 inch
10 x 11 (Short Edge)		10x11 (9x11) inch In case of definition as custom paper size Width: 9 inch Height: 11 inch



For custom size settings, see ["4.2 Printing on Custom Size Paper"](#)

◇ Print quality (default: 600 x 600 dots per inch)

Specify the printer resolution.

◇ Fixed orientation (default: Portrait)

Fix the print image in orientation of paper in set value regardless of the paper placed in the printer.

This option allows you to select [None] or [Landscape]. For more information, see ["4.3 Fixed Orientation"](#).



Print direction may be inverted depending on application software. In such a case, configure this option.

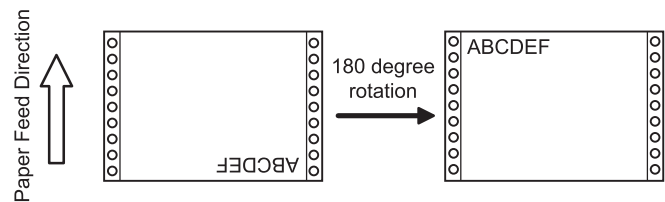
◇ N-up (default: 1)

Specify the number of page images on one side of a sheet of paper. In this option, you can select [2].

◇ Rotate (default: Off)

Rotate print direction 180 degrees. In this option, you can select [On].

For example, in the following print image, you can obtain the same result as that in the direction paper feed by selecting [On] in this option.



4.2 Printing on Custom Size Paper

Select [Printer] – [Paper Source] – [Paper Size] on the printer operation panel to configure custom paper size. For information about how to operate the printer control panel, see the “User’s Guide” that came with the printer.

The diagrams (screens) used here give an example of Windows XP.

1

For Windows 2000:

Select [Start] – [Settings] – [Printers].

For Windows XP/Server 2003:

Select [Start] – [Control Panel] – [Printers and Faxes].

For Windows Vista:

Select [Start] - [Control Panel] and double-click on [Printer] from [Control Panel].

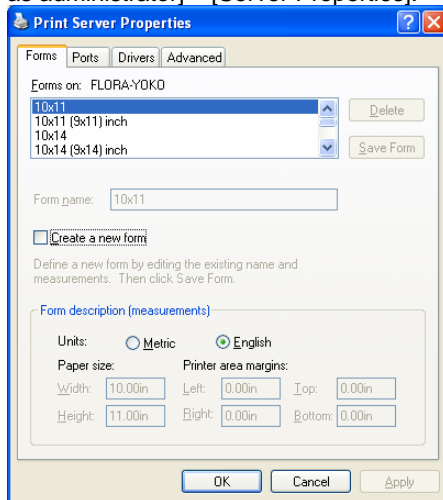
2

For Windows 2000/XP/Server 2003:

Select [File] - [Server Properties].

For Windows Vista:

Right-click on the printer list and select [Run as administrator] – [Server Properties].

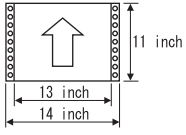
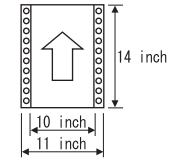


3

On the [Forms] tab, select [Create a new form], set the width and height, and click [Save Form].



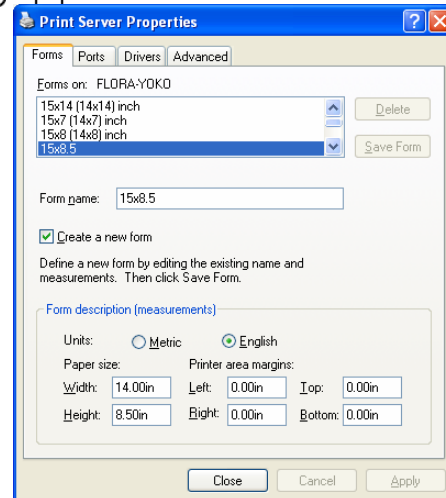
Enter vertical direction from orientation of paper as [width] and horizontal direction as [height]. Adjust the width and height to match the paper size set on the printer control panel. At this time, subtract the length of feeding holes on both edges of the paper (1 inch = 25.4 mm). An example of setting is given below:

Paper Size (inch)	Feeding sample	Value to be set	
		Width	Height
14 x 11 Feeding from Long Edge		13 inch	11 inch
11 x 14 Feeding from Short Edge		10 inch	14 inch

When the custom size paper created is added to the paper list, the added custom size paper is displayed on the printer driver under [Paper Size]. However, it is displayed only when the size is within the range of [Width] and [Height] of paper that can be used as custom size. The range of [Width] and [Height] of paper that can be used as custom size varies depending on the printer. For more information, see the User’s Guide that came with the printer.



The following diagram shows an example of creating a paper size of 15 x 8.5 inches without margins.



In the application software, specify the paper size name that has been newly added. The newly added paper size may not function properly depending on the combination of application software and printer driver. Test print and make sure that it can be properly printed before using the newly added paper size.

4.3 Fixed Orientation

Fixed orientation is a function of printing an image in the same orientation as set values regardless of the paper placed in the printer. The set values of this option include “None”, “Portrait” (default), and “Landscape”.

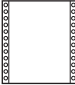





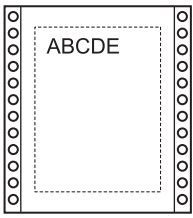
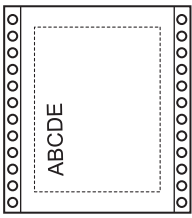
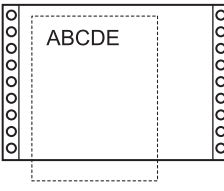
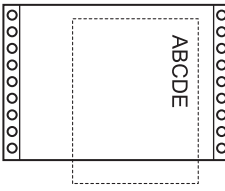
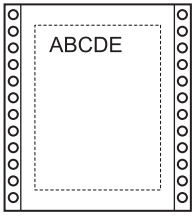
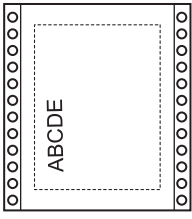
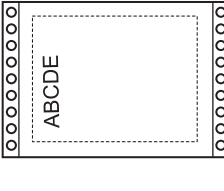
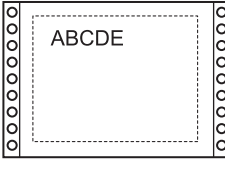
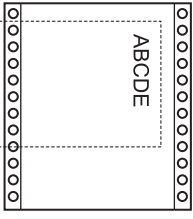
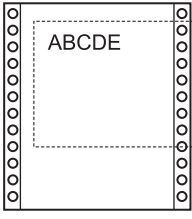
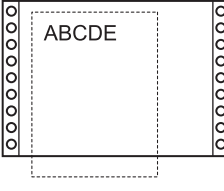
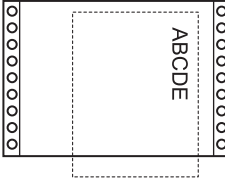
When you select [None], the “Print Orientation” corresponds to the paper placed in the printer.

When you select [Portrait], the orientation is portrait regardless of the paper placed in the printer.

When you select [Landscape], the orientation is landscape regardless of the paper placed in the printer.

Orientation of paper represents orientation of the paper placed in the printer. “Portrait” means that the paper used is has a value of “width ≤ length” while “Landscape” means the paper used has a value of “width > length”.

The following table shows the print image using settings of fix orientation, orientation of paper, and print orientation. Direction of paper feed is set to upward.

Paper Direction Print Direction	Portrait 		Landscape 	
	Portrait 	Landscape 	Portrait 	Landscape 
None				
Portrait				
Landscape				



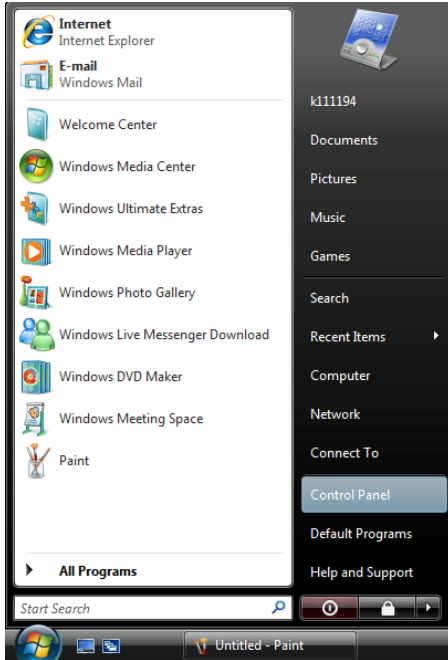
“Print orientation” can be inverted if you specify 2-up or depending on application. In such a case, print by specifying “None” or “Landscape” of this option.

4.4 Checking Printer Driver Version

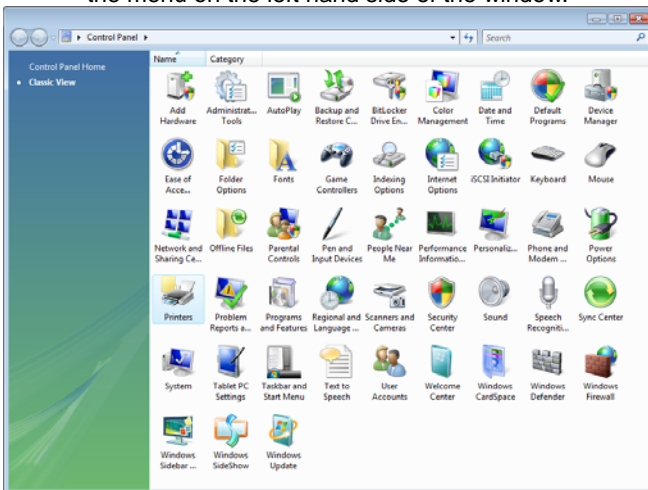
Check the printer driver version on the following screen.

4.4.1 PCL5 Driver that Comes with Windows Vista

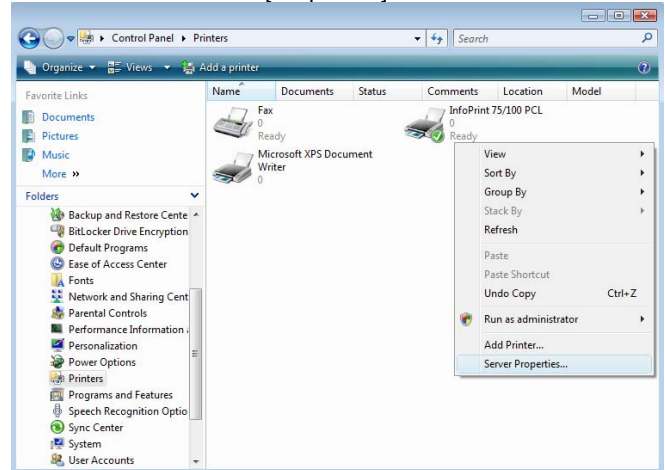
- 1** Select [Start] - [Control Panel] and open the Control Panel.



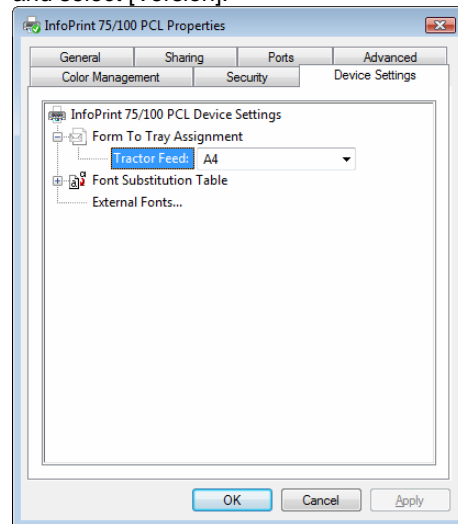
- 2** Double click on the [Printer] icon. When the [Printer] icon is not displayed, select [Classic View] from the menu on the left hand side of the window.



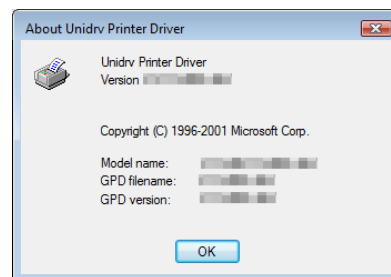
- 3** Place the mouse pointer on the printer icon. Right click and select [Properties].



- 4** Select the [Devices Settings] tab and click the portion displaying [...Device Settings]. Right click and select [Version].



- 5** Check version information.



4.4.2 PLC5 Driver that Comes with Windows 2000/XP/Server 2003

The diagrams (screens) used here give an example of Windows XP.

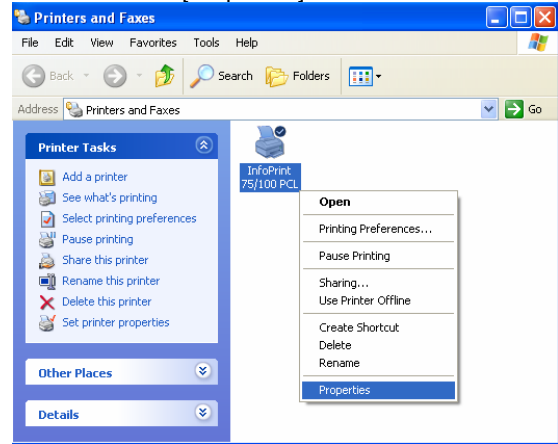
- 1 For Windows XP:**
 Select [Start] - [Control Panel] and open the Control Panel. Next, click on [Printers and Other Hardware]. Then, click on [Printers and Faxes].



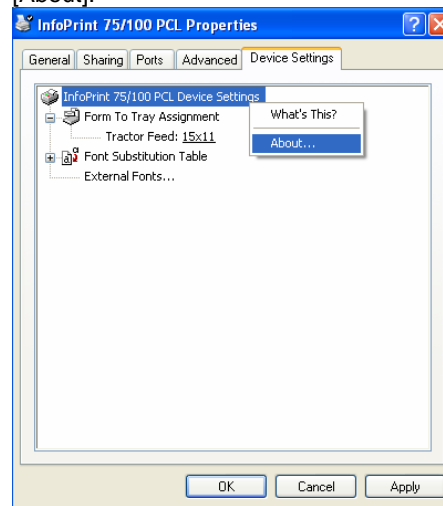
- For Windows 2000:**
 Select [Start] – [Settings] – [Printers].

- For Windows Server 2003:**
 Select [Start] - [Control Panel] – [Printers and Faxes], and then open Printers and Faxes.

- 2** Place the mouse pointer on the printer icon. Right click and select [Properties].



- 3** Select the [Device Settings] tab. Click on the portion displaying [Device Settings]. Right click and select [About].



- 4** Check version information.

