

Infoprint Manager for AIX



Print-on-Demand Feature: Submit for Macintosh User's Guide

Version 4 Release 1

Infoprint Manager for AIX



Print-on-Demand Feature: Submit for Macintosh User's Guide

Version 4 Release 1

First Edition (May 2002)

This edition applies to IBM Infoprint Manager for AIX, Version 4 Release 1 Modification 0, and to all subsequent releases and modifications until otherwise indicated in new editions or technical newsletters. Be sure to use the correct edition for the level of the product.

Order publications through your IBM representative or the IBM branch office serving your locality. Publications are not stocked at the address given below.

IBM Printing Systems welcomes your comments. For your convenience, a form for reader's comments is provided at the back of this publication. If the form has been removed, you may send your comments to the following address:

INFORMATION DEVELOPMENT
IBM PRINTING SYSTEMS
DEPARTMENT H7FE BUILDING 004M
PO BOX 1900
BOULDER CO 80301-9191

If you prefer to send comments electronically, use one of the following methods:

- Internet/Email: printpub@us.ibm.com
- Fax: 1-800-524-1519 within U.S.; 1-303-924-6873 outside U.S.

Internet

Visit our home page at <http://www.ibm.com/printers>.

When you send information to IBM, you grant IBM a nonexclusive right to use or distribute the information in any way it believes appropriate without incurring any obligation to you.

© Copyright International Business Machines Corporation 2002. All rights reserved.

US Government Users Restricted Rights – Use, duplication or disclosure restricted by GSA ADP Schedule Contract with IBM Corp.

Contents

Figures	v
Chapter 1. Introduction	1
Who should read this publication	1
Most recent information	1
The Infoprint publication library.	1
Infoprint Manager for AIX publication library	1
Infoprint Manager for Windows publication library	2
Chapter 2. Setting up Infoprint Submit on a Macintosh system	5
Macintosh Requirements	5
Installing Infoprint Submit.	5
Configuring Infoprint Manager to support saving RIP files and preflighting from Submit.	5
Accessing Infoprint Submit	10
Chapter 3. Using Infoprint Submit to process a job.	11
Job tickets	11
Migrating job tickets from previous versions of Infoprint Submit	11
Working with print jobs	12
Creating files for printing.	12
Creating a job ticket	12
Verifying that PostScript jobs are ready to print	17
Known product limitations	18
Notices	19
Trademarks	21
EuroReady	21
Index	23

Figures

1.	An example of an Infoprint Submit job ticket	13
2.	Infoprint Submit job ticket menu	14
3.	The Adjust Page Placement window	15
4.	The Files tab for job submission.	16
5.	The Schedule tab for job submission	17

Chapter 1. Introduction

The Submit for Macintosh Print-on-Demand Feature of IBM® Infoprint® Submit for the Macintosh® Operating System, hereafter called Infoprint Submit, provides an easy to use graphical user interface for print submission for commercial print environments.

This publication helps you install, configure, and use Infoprint Submit. Although you can use this publication for general guidance in using Infoprint Submit, you should use the online Help to find more detailed instructions.

Who should read this publication

This document is for the user who installs, configures, and uses Infoprint Submit on a Macintosh workstation.

Most recent information

IBM will update the web version of this document regularly. You can download it in PDF format by going to the IBM Printing Systems website at <http://www.ibm.com/printers> and clicking on the Infoprint Manager link (under **Resources For**), then selecting the Infoprint Manager for AIX link. On the product home page, select **Product Library** from the list in the right-hand navigation bar, and then click the **Infoprint Submit for Macintosh** link under the **Publications** heading.

The Infoprint publication library

For the most current information, please go to the IBM Printing Systems site at <http://www.ibm.com/printers>. From this site, you can download the PDF file that corresponds to the publication you are interested in. You can also go to the IBM Publications Center to download the appropriate PDF file or order a printed version of a publication at

<http://www.elink.ibm.com/public/applications/publications/cgibin/pbi.cgi?CTY=US>

Infoprint Manager for AIX publication library

Infoprint provides the following publications in PDF format on a CD-ROM supplied with the product:

- *Infoprint Manager for AIX: Planning Guide*, G544-5833. This publication helps you prepare to use Infoprint Manager for AIX. It addresses migration from previous versions of the product. Finally, this publication explains the differences between the AIX and Windows version of Infoprint. A printed copy of this publication is shipped with Infoprint Manager for AIX.
- *Infoprint Manager for AIX: Getting Started*, G544-5817. This publication helps you install and configure Infoprint Manager for AIX. It focuses primarily on server and client system software configuration. A printed copy of this publication is shipped with Infoprint Manager for AIX.
- *Guidelines for Installing Infoprint Manager for AIX 4.1 in an HACMP Configuration*, G544-5818. This publication helps you install and configure Infoprint Manager

for AIX as an application in an HACMP environment. This document presumes that you have already installed HACMP and DCE (if applicable) on your AIX operating system.

- *Infoprint Manager for AIX: Procedures*, G544-5815. This publication describes the primary tasks necessary for setting up an Infoprint environment, submitting print jobs, scheduling jobs, and managing the print environment. This publication contains all the Infoprint Manager for AIX procedures that are available as topics on the web in book format, including an index and table of contents for ease of retrievability.
- *Infoprint Manager: Reference*, S544-5475. For print administrators, operators, and application programmers with the need to perform command-line functions, this publication describes the commands, utilities, transforms, attributes, and attribute values associated with Infoprint.
- *PSF Direct Network Configuration Guide for System/370*, S544-5486. For system administrators or network specialists responsible for configuring a system for Print Services Facility (PSF) Direct. PSF Direct is a function of Infoprint Manager for AIX that allows another PSF program (PSF/VM, PSF/MVS, or PSF/VSE) to print remotely, using the SNA LU 6.2 protocol, on printers supported by Infoprint. The PSF program sends the print data stream directly to the Infoprint printer.
- *IBM PSF for AIX: AFP Upload Configuration Guide Using SNA Server/6000*, S544-5422. For system administrators, this publication describes how to configure AFP Upload on both AIX (client) and MVS (server) to send files to the JES spool on the MVS server, using a SNA LU 6.2 protocol.
- *IBM PSF for AIX: AFP Upload Configuration Guide Using TCP/IP*, S544-5423. For system administrators, this publication describes how to configure AFP Upload on both AIX (client) and MVS (server) to send files to the JES spool on the MVS server, using a TCP/IP protocol.
- *IBM PSF Version 3 Release 3 for OS/390 and z/OS: Download for OS/390*, S544-5624. This publication describes Download for OS/390, a feature of PSF for OS/390 and z/OS that transmits output data sets on the JES spool to PSF for AIX, Infoprint Manager for AIX, Infoprint Manager for Windows, and Content Manager OnDemand for printing or archiving. This publication describes how to configure the MVS, OS/390, or z/OS system, how to submit jobs, and how to diagnose errors. Error messages issued by Download for OS/390 are in *PSF for OS/390 and z/OS: Messages and Codes* (G544-5627).

Infoprint Manager for Windows publication library

Infoprint provides the following publications in PDF format on a CD-ROM supplied with the product:

- *Infoprint Manager for Windows: Planning Guide*, G544-5716. This publication helps you prepare to use Infoprint Manager for Windows. It describes features of this product and compares its functions to those of IBM Print Services Facility for OS/2 (PSF for OS/2). It addresses migration from PSF for OS/2 at a high level. Finally, this publication explains the differences between the AIX and Windows version of Infoprint. A printed copy of this publication is shipped with Infoprint Manager for Windows.
- *Infoprint Manager for Windows: Getting Started*, G544-5717. This publication helps you install and configure Infoprint Manager for Windows. It focuses primarily on server and client system software configuration, but it also includes information for the IBM 4159 Model 001 S/390 Parallel Channel Emulator Card. A printed copy of this publication is shipped with Infoprint Manager for Windows.

- *Infoprint Manager for Windows: Procedures*, G544-5814. This publication contains all the Infoprint Manager for Windows procedures that are available as topics on the web in book format, including an index and table of contents for ease of retrievability.
- *Infoprint Manager: Reference*, S544-5475. For print administrators, operators, and application programmers with the need to perform command-line functions, this publication describes the commands, utilities, transforms, attributes, and attribute values associated with Infoprint.

For information on the use of PSF Direct with Infoprint Manager for Windows, visit the Product Library page for Infoprint Manager for Windows at <http://www.ibm.com/printers/R5PSC.NSF/Web/ipmntrefinfo>.

Chapter 2. Setting up Infoprint Submit on a Macintosh system

Macintosh Requirements

Infoprint Submit has these minimum requirements:

- PowerMac
- Macintosh running OS X version 10.1 or later
- 32 MB RAM
- 5 MB hard drive space
- Local area network (LAN) connection (Ethernet)
- Network connectivity, with a user ID having permission to submit print jobs and perform queries

Installing Infoprint Submit

This section contains information that you need to install Infoprint Submit.

Insert the Infoprint Manager for AIX Print-on-Demand Feature (2 of 2) CD-ROM into the drive and double-click its icon on the desktop.

1. Double-click the **SubmitInstaller** icon to start the install program.
2. Follow the instructions as directed from the installer.

It is recommended that you install Submit in the Applications directory of the Hard Drive. Once the product is installed, you can create an alias on the desktop to provide easy access to Submit. To do this, highlight the Infoprint Submit file, then choose **Make alias** from the **File** menu, and drag the alias onto the desktop.

Note: After installing Infoprint Submit, you need to configure the logical destination on the AIX server to accept jobs from the workstation printer drivers. See *IBM Infoprint Manager for AIX: Procedures*, G544-5815 for information about creating and managing logical destinations.

Configuring Infoprint Manager to support saving RIP files and preflighting from Submit

If you have installed Fast Connect, you can configure Infoprint Manager with user access and a shared directory that Infoprint Manager will use for saving processed or rasterized files. This directory is also used when users preview Postscript files from the Infoprint Manager Submit application.

To configure:

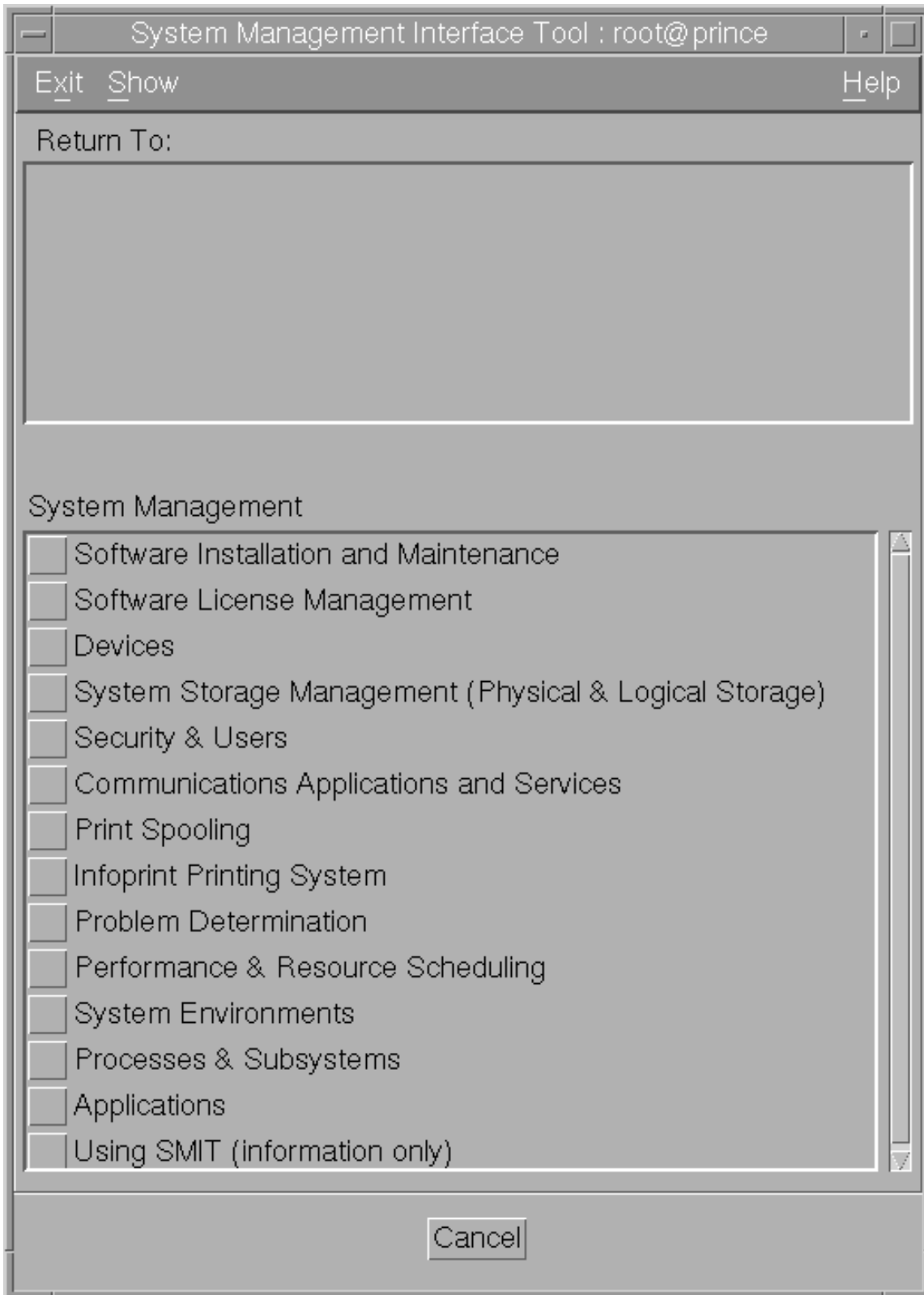
1. From a dtterm window as **root**, specify `cd/usr/lpp/InfoPrint/install/bin`.
2. Using your AIX editor of choice, edit the `claimdrive.ksh` file to change line 25 from

```
=VGNAME='mkgv -f -y$NEWVG -s '8' $DEFAULT_HDISK'
```

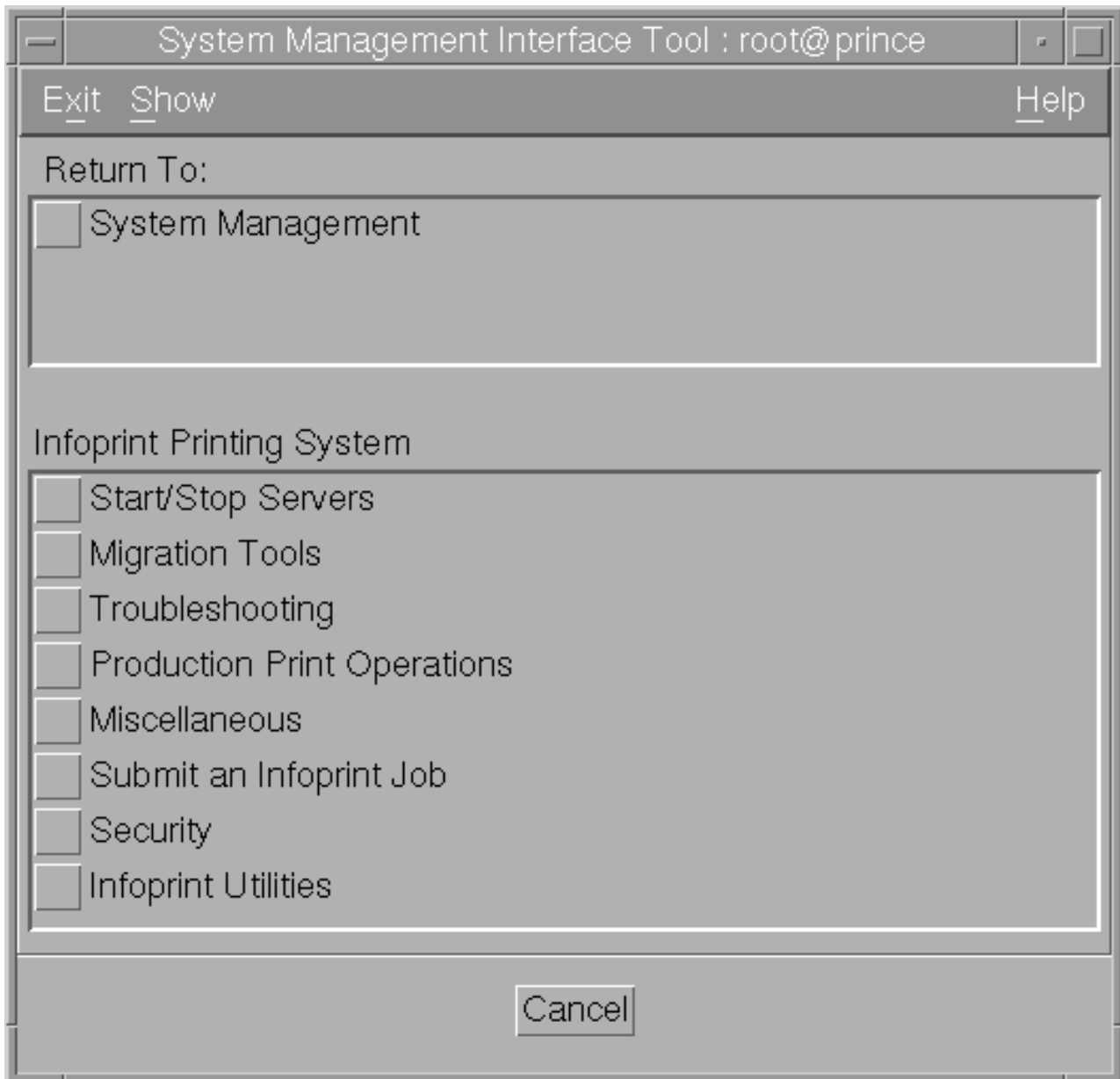
to

```
=VGNAME='mkgv -f -y$NEWVG -s '16'  
$DEFAULT_HDISK'
```

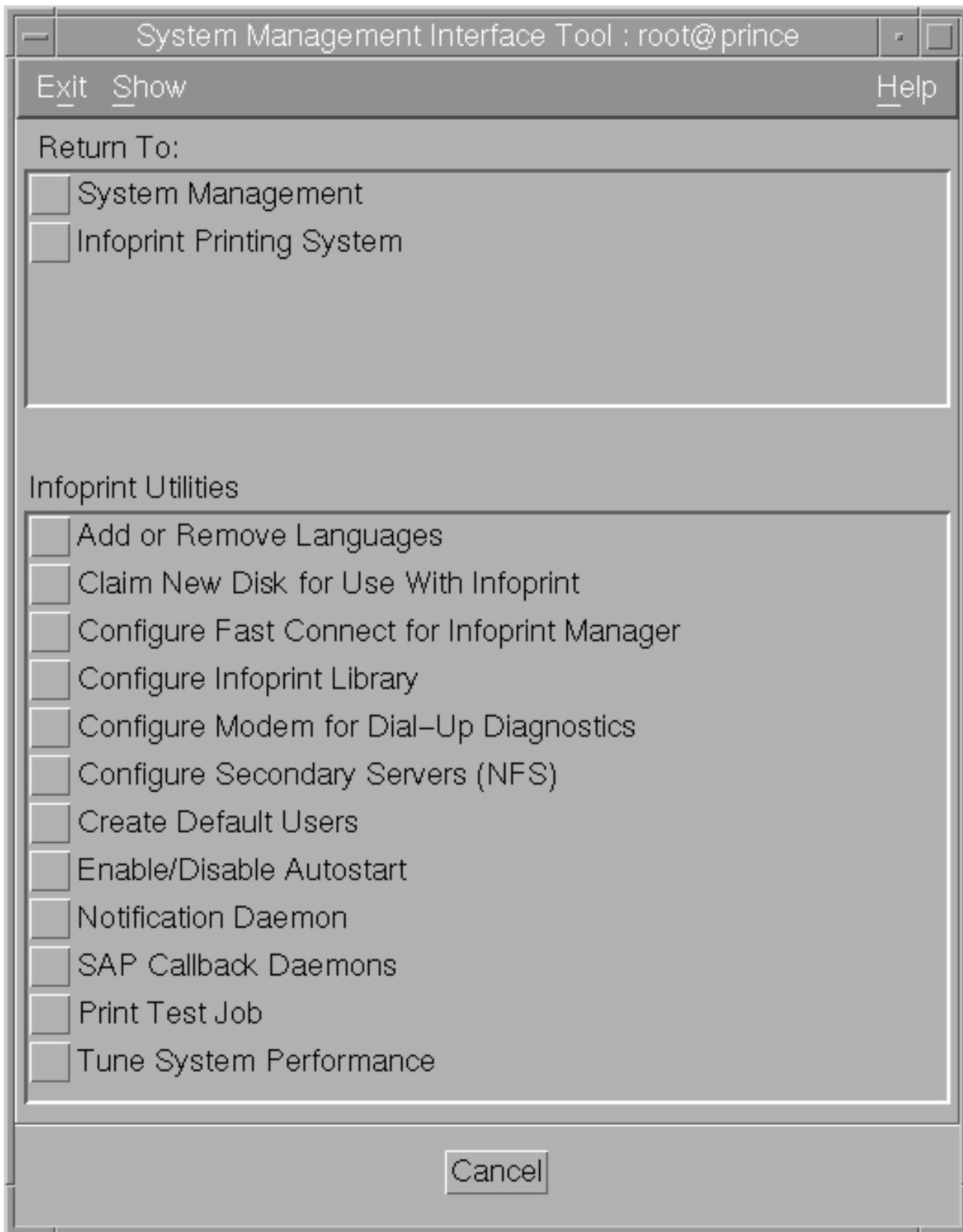
- From the dtterm window, type SMIT so that the screen on the following page displays:



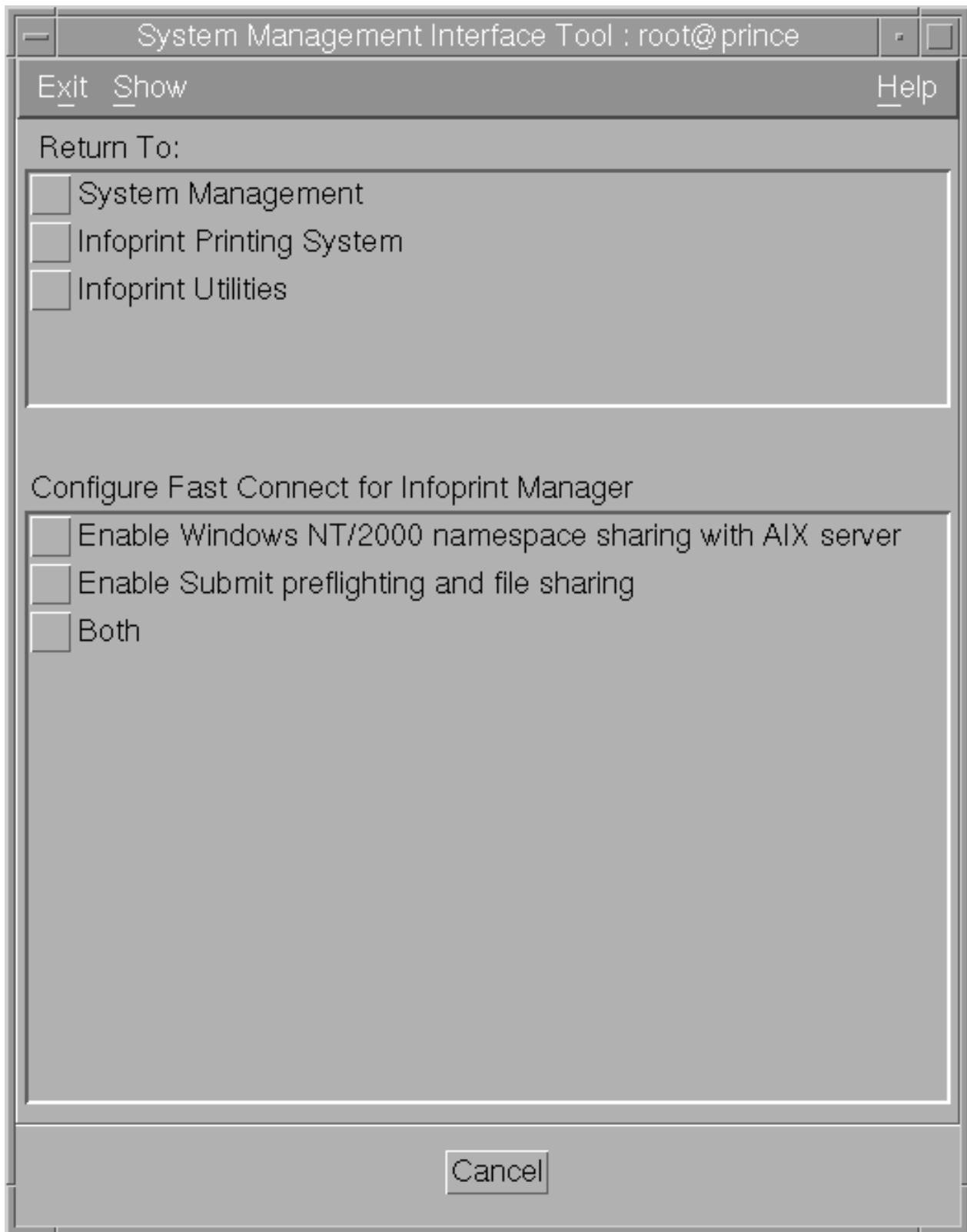
4. Select **Infoprint Printing System**, and the following screen displays:



5. Select **Infoprint Utilities**, and the following screen displays:



6. Now select **Configure Fast Connect for Infoprint Manager**, and the following screen displays:



7. Select **Enable Submit Preflighting and file sharing**.

An animated icon of a running man will raise his arms when the setup is complete. Your AIX system will now have a shared directory (**/ipdata**) that some Infoprint applications use for saving files and sharing data.

Accessing Infoprint Submit

After installing Infoprint Submit and associated software, you can access the programs by clicking on the **Infoprint Submit** icon.

Chapter 3. Using Infoprint Submit to process a job

IBM Infoprint Submit is used through the life cycle of a job. A print shop uses Infoprint Submit on a Macintosh system to create a job ticket for the job, submit the job to the Infoprint Manager server on AIX for printing, and track the job.

Job tickets

An Infoprint job consists of a job ticket and all the files associated with that job. A job ticket contains all the specifications for a job. The job ticket refers to the customer's job data and resources and pulls them together in a job bundle. You can create a job ticket by using Infoprint Submit.

You can print any part of the data by submitting a print job.

Migrating job tickets from previous versions of Infoprint Submit

To migrate job tickets from a previous version of Submit to your current version of Submit on Mac OS Version 10.1, do the following:

1. From the previous version of Submit, open the job ticket you want to migrate.
2. Submit the job:
 - Open the Ticket menu and select Submit Job to submit the job.
 - Select the Schedule tab from the Submit dialog.
 - Select Hold from the RIP options group box.
 - Click OK to submit the job.
3. Select **Options**—>**Job Status** to open the Job Status dialog.
4. Do the following to copy the contents of the job ticket file to a text file:
 - Select the ticket you want to migrate.
 - Click the **View Ticket** button to open the Job Ticket window.
 - Highlight the entire contents of the job ticket file.
 - Copy the contents of the job ticket file to the clipboard. (For Windows systems, press Ctrl+C. For Macintosh systems, press Command+C.)
 - Open a new file in a text editor.
 - Paste the job ticket file contents into this new file. (For Windows systems, press Ctrl+V. For Macintosh systems, press Command+V.)
 - Save the file. (Be sure this file has an extension of .jtk.)
5. Transfer all source files listed in your job ticket file, and the converted job ticket file, to the system that has the current version of Submit. Save them in the directory where the Infoprint Submit files have been saved or where they can be easily located.
6. In your current version of Submit, select **Ticket**—>**Open** to open the migrated job ticket file. An error may occur the first time you assign a source file to the migrated job ticket if the path to the file has changed. Use the Browse function to locate the file, and Submit will save the new location information.

Working with print jobs

When using Infoprint Submit to create the job ticket, you will identify and organize the printable files and other resources that make up the job. Processing a job ticket includes these steps:

1. Creating a new job ticket.
2. Adding files, sheets, and documents to the job ticket.
3. Selecting the layout of the job, the desired server and printer, and other attributes of the job.
4. Submitting the job and setting print options, such as saving the RIP file or holding the job at the printer.
5. Tracking the job by displaying messages.

Creating files for printing

You generate the printable files that you submit to Infoprint Manager, file by file, from the application that you use for authoring. You can use the Adobe PostScript driver and IBM Infoprint PostScript Printer Description files (PPDs) to convert files to PostScript. You can use Infoprint Scan to create printable files from hardcopy.

Note: Infoprint Scan is a PRPQ (5799–GTG).

Creating a job ticket

Once you have installed the Infoprint Submit application on your Macintosh system, you can begin creating job tickets that support the orders you receive from customers.

Describing your job

Using an Infoprint Submit Job Ticket window, you can describe your job. The description can include a job name, an ID, a specific description of the job, the customer name, and other information that will assist you as you refer to the job ticket.

Figure 1 on page 13 shows an Infoprint Submit job ticket.

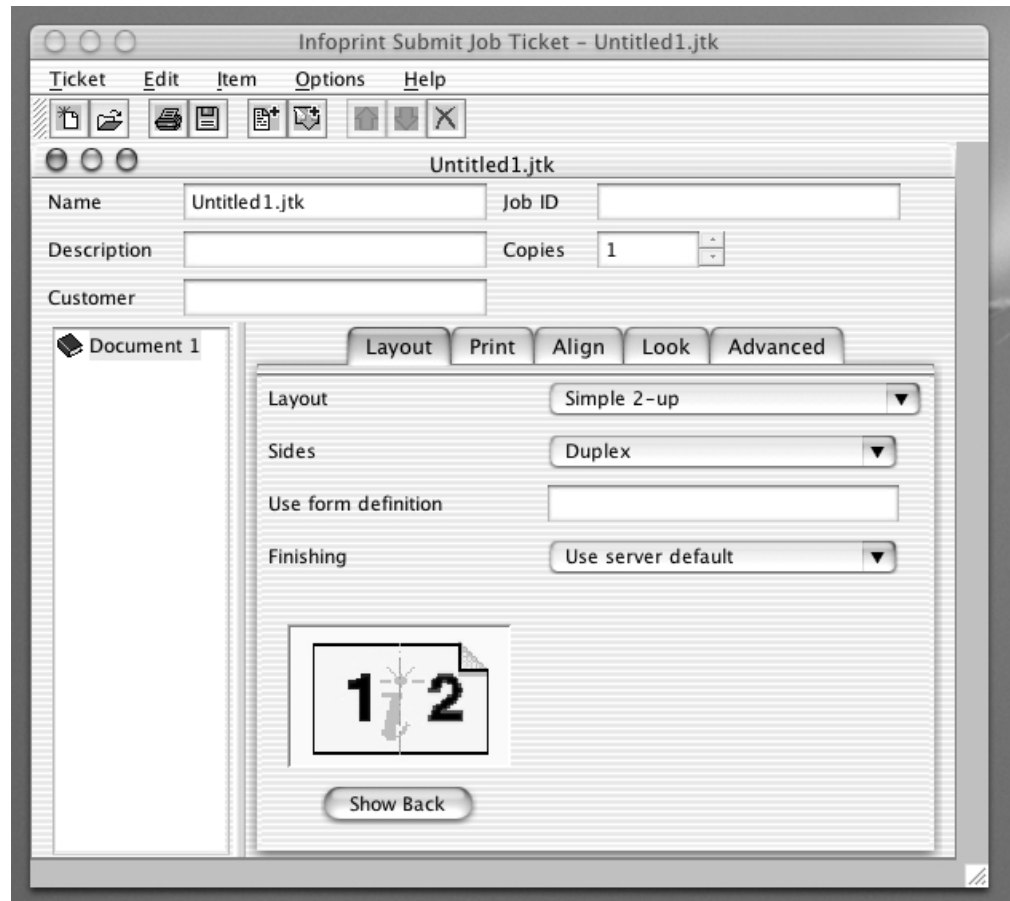


Figure 1. An example of an Infoprint Submit job ticket

To begin working on a new ticket, you start Infoprint Submit. The Job Ticket window displays.

As you create the job ticket, use the **Help** menu from the Job Ticket window or the **Help** button on the dialogs to guide you.

You can create a new job ticket using the **Ticket**→**New** option on the Menu bar, or you can open a previously created job ticket using the **Ticket**→**Open** option on the Menu bar. You can use the **Ticket**→**Submit** option on the Menu bar and then use the **Files** tab to print the entire job or any of the items or files listed in the job ticket. If you want to print just the ticket itself, open the job ticket using a text editor and then select **Print**.

Figure 2 on page 14 shows the **Ticket** menu, which contains general tasks that you can perform as you work with job tickets.

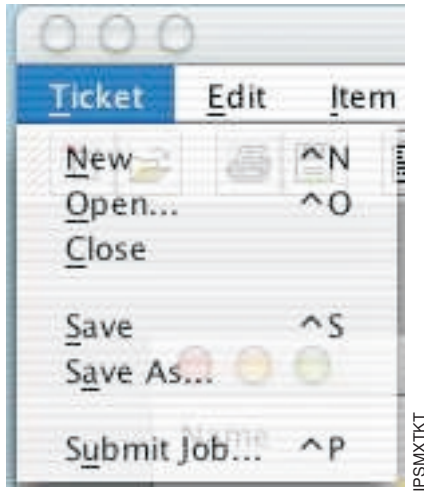


Figure 2. Infoprint Submit job ticket menu

Specifying how you want the job to print

You can describe the layout of your document and specify alignment values. You can adjust characteristics such as the front to back alignment of your document. If the image is smaller than the page, you use this window to adjust the position of the image on the page.

Figure 3 on page 15 shows the Adjust Page Placement window.

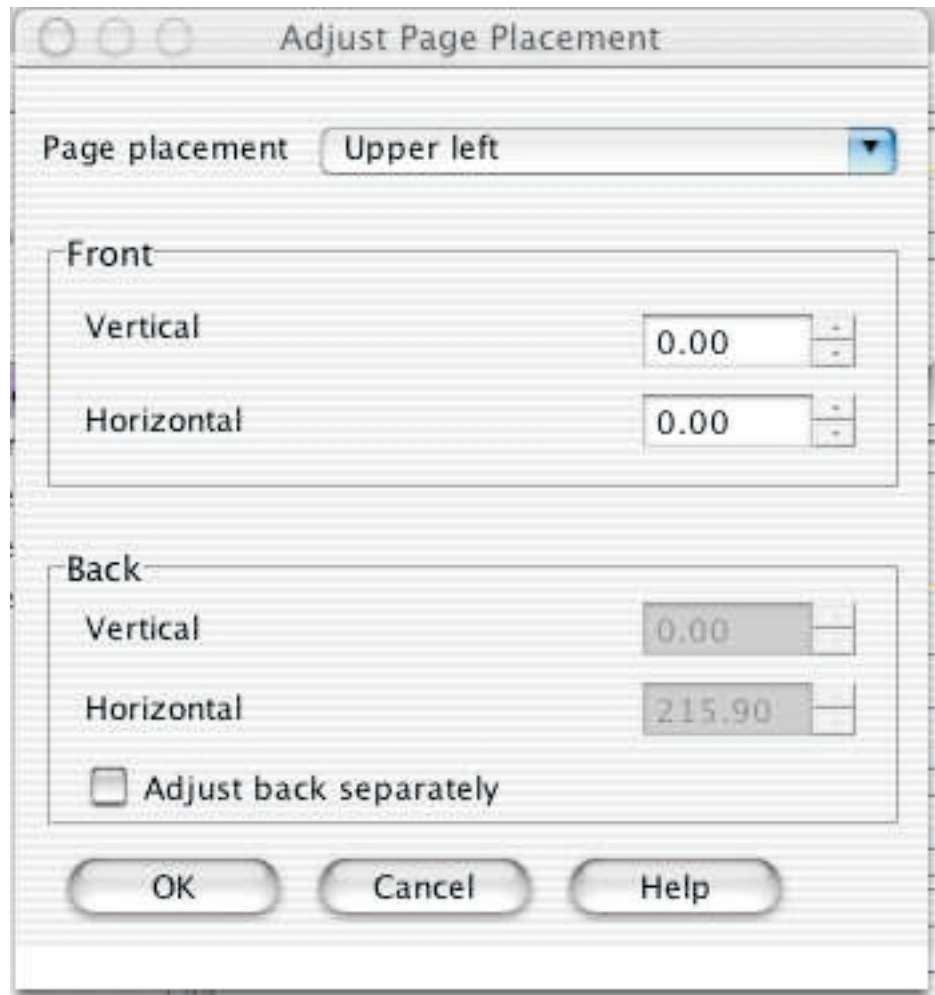


Figure 3. The Adjust Page Placement window

Working with files in a job ticket

You build job tickets by adding items in the correct order that refer to the files that you are printing. The files you print may be printable text files or graphic files. Graphic files may include printable files that were created from hard copy by using Infoprint Scan. Files may reside on your hard disk or in a shared directory on another system.

Submitting a print job

When you select **Submit Job** from the **Ticket** menu, you can indicate which files to print and how to schedule and process your job.

From the **Files** tab, you can choose the printer from a list of printers on your servers. You can specify what files to print and how many copies to print.

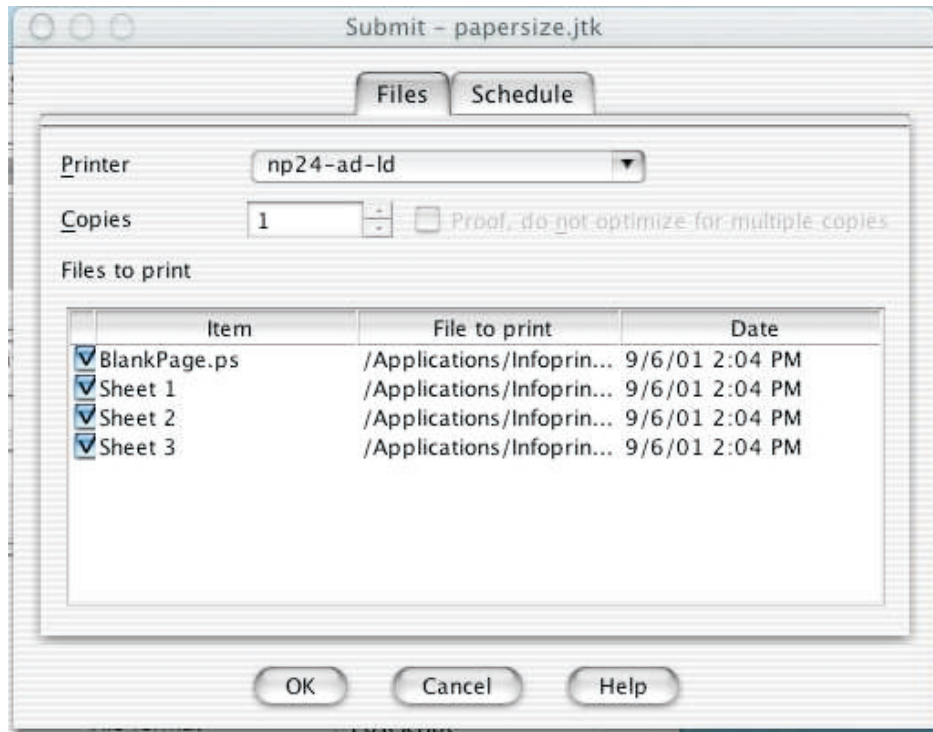


Figure 4. The Files tab for job submission

Figure 4 shows the **Files** tab that displays when you choose to submit a job. In this case, a data item has been selected for printing on a logical printer named np24-ad-ld.

Figure 5 on page 17 shows the **Schedule** tab, where you indicate when and how you want your job to be processed. Because the time it takes to print a job includes both the processing (RIPing) and the actual printing, you may want to control these activities separately to optimize the flow of paper through your printers. You may want your job to be held in the print queue before being RIPed and printed. You may want to RIP it now, but print it later. You can specify how long you would like your job to be retained on the AIX server so that it can be printed again.

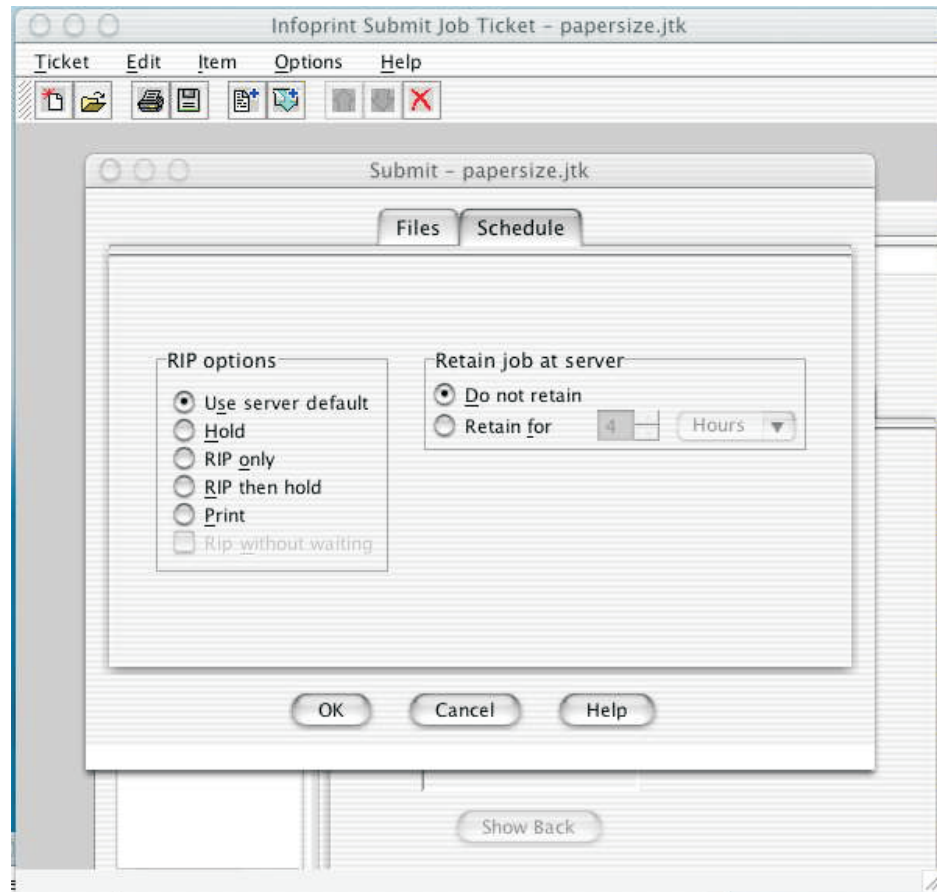


Figure 5. The Schedule tab for job submission

If you select **Print** in the **RIP Options** box on the **Schedule** tab, the job will be added to the print queue and will RIP and print automatically. An AIX operator will not have to release the job.

Saving the RIP output

The raster image processor (RIP) file is generated during the print process. Because PostScript to RIP processing can be costly, you may want to save your RIP files for re-printing jobs to avoid having to RIP them again.

When you add a file to your job ticket, click the **Save RIPed files** check box option on the **Print** tab to specify that the RIPed file is to be saved. The RIP file is saved in the `/var/pd/<servername>` directory.

Verifying that PostScript jobs are ready to print

If your Infoprint server receives a PostScript job from a personal computer system, you must ensure that the Type 1 fonts required to print are either:

- Contained within the job (inline)
- Available on AIX

If the fonts are contained inline, you should have no problem in printing the output. However, if the fonts are not available on AIX, by default a job will be cancelled.

Known product limitations

Restrictions in the Mac operating system or Java implementation tools have caused the following known product limitations in this version of Infoprint Submit:

- When using **File—>Save As**, or if the user is saving a job ticket for the first time, the **Name** field is not displayed as the default file name for saving the ticket.
- After recovering from a System Standby, the spin buttons (up/down arrow buttons) on entry fields cannot be used with the mouse. You can type a value into the entry fields, or use the arrow keys on the keyboard to change the displayed values.
- When migrating job tickets for which duplex printing and a separate back side adjustment are selected, page placement values for the back side of the paper are not saved in the migrated job ticket. Settings for the back side must be adjusted manually.
- Some keyboard usage methods do not conform to standard system controls. Refer to the online Help for Infoprint Submit for instructions on using the keyboard.

Notices

This information was developed for products and services offered in the U.S.A.

IBM may not offer the products, services, or features discussed in this document in other countries. Consult your local IBM representative for information on the products and services currently available in your area. Any reference to an IBM product, program, or service is not intended to state or imply that only that IBM product, program, or service may be used. Any functionally equivalent product, program, or service that does not infringe any IBM intellectual property rights may be used instead. However, it is the user's responsibility to evaluate and verify the operation of any non-IBM product, program, or service.

IBM may have patents or pending patent applications covering subject matter described in this document. The furnishing of this document does not give you any license to these patents. You can send license inquiries, in writing, to:

IBM Director of Licensing
IBM Corporation
North Castle Drive
Armonk, NY 10504-1785 U.S.A.

The following paragraph does not apply to the United Kingdom or any other country where such provisions are inconsistent with local law:

INTERNATIONAL BUSINESS MACHINES CORPORATION PROVIDES THIS PUBLICATION "AS IS" WITHOUT WARRANTY OF ANY KIND, EITHER EXPRESS OR IMPLIED, INCLUDING, BUT NOT LIMITED TO, THE IMPLIED WARRANTIES OF NON-INFRINGEMENT, MERCHANTABILITY OR FITNESS FOR A PARTICULAR PURPOSE. Some states do not allow disclaimer of express or implied warranties in certain transactions, therefore, this statement may not apply to you.

This information could include technical inaccuracies or typographical errors. Changes are periodically made to the information herein; these changes will be incorporated in new editions of the publication. IBM may make improvements and/or changes in the product(s) described in this publication at any time without notice.

Any references in this information to non-IBM Web sites are provided for convenience only and do not in any manner serve as an endorsement of those Web sites. The materials at those Web sites are not part of the materials for this IBM product and use of those Web sites is at your own risk.

IBM may use or distribute any of the information you supply in any way it believes appropriate without incurring any obligation to you.

For license inquiries regarding double-byte (DBCS) information, contact the IBM Intellectual Property Department in your country or send inquiries, in writing, to:

IBM World Trade Asia Corporation
Licensing
2-31 Roppongi 3-chome, Minato-ku
Tokyo 106, Japan

Licensees of this program who wish to have information about it for the purpose of enabling: (i) the exchange of information between independently created programs and other programs (including this one) and (ii) the mutual use of the information which has been exchanged, should contact:

IBM Printing Systems Division
Department H7FE Building 003G
Information Development
PO Box 1900
Boulder CO 80301-9191 USA

Such information may be available, subject to appropriate terms and conditions, including in some cases, payment of a fee. The licensed program described in this document and all licensed material available for it are provided by IBM under terms of the IBM Customer Agreement, IBM International Program License Agreement or any equivalent agreement between us.

Any performance data contained herein was determined in a controlled environment. Therefore, the results obtained in other operating environments may vary significantly. Some measurements may have been made on development-level systems and there is no guarantee that these measurements will be the same on generally available systems. Furthermore, some measurement may have been estimated through extrapolation. Actual results may vary. Users of this document should verify the applicable data for their specific environment.

Information concerning non-IBM products was obtained from the suppliers of those products, their published announcements or other publicly available sources. IBM has not tested those products and cannot confirm the accuracy of performance, compatibility or any other claims related to non-IBM products. Questions on the capabilities of non-IBM products should be addressed to the suppliers of those products.

All statements regarding IBM's future direction or intent are subject to change or withdrawal without notice, and represent goals and objectives only.

This information is for planning purposes only. The information herein is subject to change before the products described become available.

If you are viewing this information softcopy, the photographs and color illustrations may not appear.

For online versions of this book, we authorize you to:

- Copy, modify, and print the documentation contained on the media, for use within your enterprise, provided you reproduce the copyright notice, all warning statements, and other required statements on each copy or partial copy.
- Transfer the original unaltered copy of the documentation when you transfer the related IBM product (which may be either machines you own, or programs, if the program's license terms permit a transfer). You must, at the same time, destroy all other copies of the documentation.

You are responsible for payment of any taxes, including personal property taxes, resulting from this authorization.

Your failure to comply with the terms above terminates this authorization. Upon termination, you must destroy your machine readable documentation.

Trademarks

The following are trademarks or registered trademarks of International Business Machines Corporation:

Advanced Function Printing
AFP
AIX
AS/400
IBM
IBM Cross Platform Technologies for Windows
Infoprint
Intelligent Printer Data Stream
IPDS
Micro Channel
MVS
OS/2
OS/390
OS/400
Print Services Facility
S/390
System/370

The following are trademarks of other companies:

- Java and all Java-based trademarks and logos are trademarks or registered trademarks of Sun Microsystems, Inc. in the United States, other countries, or both.
- Microsoft, MS-DOS, Windows, Windows NT, Windows 2000, Windows ME, Microsoft Visual Basic, Microsoft Visual C++, and the Windows logo are trademarks of Microsoft Corporation in the United States, other countries, or both.
- Pentium is a registered trademark of Intel Corporation in the United States, other countries, or both.
- UNIX is a registered trademark of The Open Group in the United States and other countries.

Other company, product, and service names may be trademarks or service marks of others.

EuroReady

Infoprint Manager is capable of processing data containing the euro sign. Font character sets and code pages that contain and map the euro sign consistently with the application must be present either in a host library or in the printer. AFP fonts that support the euro sign are included in the AFP Font Collection (Program Number 5648-B33).

Index

F

- files
 - creating for printing 12
 - in job ticket 15
- fonts
 - verifying PostScript fonts for printing 17

I

- identifying job content 12
- Infoprint Submit
 - creating a job ticket 12
 - identifying job content 12
 - submitting jobs 15

J

- job description
 - on job ticket 12
- job specifications
 - on job ticket 14
- job tickets
 - creating 12
 - describing job on 12
 - files in 15
 - overview 11
 - printing specifications on 14
- jobs
 - definition 11
 - identifying content 12
 - submitting
 - with Infoprint Submit 15
 - verifying PostScript fonts 17

N

- notices 19

P

- PostScript
 - creating files 12
 - preflight for printing 17
 - verifying for printing 17
- preflighting PostScript fonts 17
- printing
 - creating files for 12
- printing specifications
 - on job ticket 14

R

- related publications 1
- RIP files
 - saving 17

S

- submitting jobs
 - with Infoprint Submit 15

V

- verifying PostScript fonts 17

Readers' Comments — We'd Like to Hear from You

Infoprint Manager for AIX
Print-on-Demand Feature: Submit for Macintosh User's Guide
Version 4 Release 1

Overall, how satisfied are you with the information in this book?

	Very Satisfied	Satisfied	Neutral	Dissatisfied	Very Dissatisfied
Overall satisfaction	<input type="checkbox"/>	<input type="checkbox"/>	<input type="checkbox"/>	<input type="checkbox"/>	<input type="checkbox"/>

How satisfied are you that the information in this book is:

	Very Satisfied	Satisfied	Neutral	Dissatisfied	Very Dissatisfied
Accurate	<input type="checkbox"/>	<input type="checkbox"/>	<input type="checkbox"/>	<input type="checkbox"/>	<input type="checkbox"/>
Complete	<input type="checkbox"/>	<input type="checkbox"/>	<input type="checkbox"/>	<input type="checkbox"/>	<input type="checkbox"/>
Easy to find	<input type="checkbox"/>	<input type="checkbox"/>	<input type="checkbox"/>	<input type="checkbox"/>	<input type="checkbox"/>
Easy to understand	<input type="checkbox"/>	<input type="checkbox"/>	<input type="checkbox"/>	<input type="checkbox"/>	<input type="checkbox"/>
Well organized	<input type="checkbox"/>	<input type="checkbox"/>	<input type="checkbox"/>	<input type="checkbox"/>	<input type="checkbox"/>
Applicable to your tasks	<input type="checkbox"/>	<input type="checkbox"/>	<input type="checkbox"/>	<input type="checkbox"/>	<input type="checkbox"/>

Please tell us how we can improve this book:

Thank you for your responses. May we contact you? Yes No

When you send comments to IBM, you grant IBM a nonexclusive right to use or distribute your comments in any way it believes appropriate without incurring any obligation to you.

Name

Address

Company or Organization

Phone No.



Fold and Tape

Please do not staple

Fold and Tape



NO POSTAGE
NECESSARY
IF MAILED IN THE
UNITED STATES

BUSINESS REPLY MAIL

FIRST-CLASS MAIL PERMIT NO. 40 ARMONK, NEW YORK

POSTAGE WILL BE PAID BY ADDRESSEE

IBM Corporation
Information Development
IBM Printing Systems
Department H7FE Building 004M
Boulder, CO 80301-9817



Fold and Tape

Please do not staple

Fold and Tape



Program Number:

Printed in U.S.A.