

Printing Systems Division



# Infoprint Manager for AIX Print-on-Demand Feature: Submit for Windows User's Guide

*Version 4 Release 1*



Printing Systems Division



# Infoprint Manager for AIX Print-on-Demand Feature: Submit for Windows User's Guide

*Version 4 Release 1*

**Second Edition (November 2002)**

This edition applies to IBM Infoprint Manager for AIX, Version 4 Release 1, and to all subsequent releases and modifications until otherwise indicated in new editions or technical newsletters. Be sure to use the correct edition for the level of the product.

Order publications through your IBM representative or the IBM branch office serving your locality. Publications are not stocked at the address given below.

IBM Printing Systems welcomes your comments. For your convenience, a form for reader's comments is provided at the back of this publication. If the form has been removed, you may send your comments to the following address:

INFORMATION DEVELOPMENT  
IBM PRINTING SYSTEMS  
DEPARTMENT H7FE BUILDING 004M  
PO BOX 1900  
BOULDER CO 80301-9191

If you prefer to send comments electronically, use one of the following methods:

- Internet/Email: [printpub@us.ibm.com](mailto:printpub@us.ibm.com)
- Fax: 1-800-524-1519 within U.S.; 1-303-924-6873 outside U.S.

**Internet**

Visit our home page at <http://www.ibm.com/printers>.

When you send information to IBM, you grant IBM a nonexclusive right to use or distribute the information in any way it believes appropriate without incurring any obligation to you.

© Copyright International Business Machines Corporation 2002. All rights reserved.

US Government Users Restricted Rights – Use, duplication or disclosure restricted by GSA ADP Schedule Contract with IBM Corp.

---

# Contents

<b>Figures</b> . . . . .	<b>v</b>
<b>Chapter 1. Introduction</b> . . . . .	<b>1</b>
Who should read this publication . . . . .	1
Most recent information . . . . .	1
The Infoprint Publication Library . . . . .	1
Infoprint Manager for AIX Publication Library . . . . .	2
Infoprint Manager for Windows Publication Library . . . . .	2
<b>Chapter 2. Setting up Infoprint Submit</b> . . . . .	<b>5</b>
Windows requirements . . . . .	5
Installing Infoprint Submit for Windows . . . . .	5
Installing a service update for Infoprint Submit. . . . .	5
Installing associated software and printer drivers . . . . .	5
AIX Fast Connect for Windows . . . . .	6
Setting up Fast Connect for Infoprint Manager . . . . .	6
Configuring Infoprint Manager to support saving RIP files and preflighting from Submit . . . . .	12
Configuring Windows and Infoprint Submit to use Fast Connect . . . . .	16
<b>Chapter 3. Using Infoprint Submit to process a job</b> . . . . .	<b>21</b>
Job tickets . . . . .	21
Working with print jobs . . . . .	21
Creating files for printing. . . . .	21
Creating and processing a job ticket . . . . .	21
Verifying that PostScript jobs are ready to print . . . . .	27
Troubleshooting: missing fonts in PostScript jobs . . . . .	28
<b>Notices</b> . . . . .	<b>31</b>
Trademarks . . . . .	33
EuroReady . . . . .	33
<b>Index</b> . . . . .	<b>35</b>



---

## Figures

1.	Map to...	17
2.	Map Network Drive	18
3.	Connect As...	18
4.	An example of an Infoprint Submit job ticket	22
5.	Infoprint Submit job ticket menu	23
6.	The Adjust Page Placement window	24
7.	The Variable Data tab of a job ticket	25
8.	The Files tab for job submission.	26
9.	The Schedule tab for job submission	27





---

## Chapter 1. Introduction

The Infoprint Manager for AIX Print-on-Demand Feature consists of the following three clients:

- IBM® Infoprint® Submit Express for the Windows® Operating System
- IBM Infoprint Submit for the Windows Operating System
- IBM Infoprint Submit for the Macintosh Operating System

The Infoprint Submit Express for the Windows Operating System client contains several enhancements to usability, serviceability, and reliability from the previous Windows version. If you are a new Windows user of the Print-on-Demand Feature, we recommend that you use the new Submit Express client. For instructions on using Submit Express for Windows, refer to the *Infoprint Manager for AIX Print-on-Demand Feature: Submit Express for Windows User's Guide*.

The Infoprint Submit Express for the Windows Operating System client is replacing the Infoprint Submit for Windows client; however, this client continues to be included with Infoprint Manager for AIX and is supported.

The Infoprint Submit for Macintosh client is still available. For instructions on using Infoprint Submit for Macintosh, refer to the *Infoprint Manager for AIX Print-on-Demand Feature: Submit for Macintosh User's Guide*.

IBM Infoprint Submit for the Windows Operating System will hereafter be referred to as Infoprint Submit.

---

### Who should read this publication

This document is for the user who installs, configures, and uses Infoprint Submit on a Windows workstation.

---

### Most recent information

This document is available on the World Wide Web from the IBM Printing Systems website at <http://www.ibm.com/printers>.

IBM will update the web version of this document regularly. You can download it in PDF format by going to the IBM Printing Systems website at <http://www.ibm.com/printers> and clicking on the Infoprint Manager link (under **Resources For**), then selecting the IBM Infoprint Manager for AIX link. On the product home page, select **Product Library** from the list in the right-hand navigation bar, and then click the **Infoprint Submit** link under the **Publications** heading.

---

### The Infoprint Publication Library

For the most current information, please go to the IBM Printing Systems website at <http://www.ibm.com/printers>.

## Infoprint Manager for AIX Publication Library

Infoprint Manager for AIX provides publications in PDF format on a CD-ROM supplied with the product. You can download PDF versions of these publications or order printed copies of these publications from IBM at the following website:

<http://www.elink.ibm.com/public/applications/publications/cgibin/pbi.cgi?CTY=US>

### Notes:

1. There is a fee for the printed manuals.
2. You can use the form number specified for a publication to order a PDF or printed version.

Here is the list of publications for Infoprint Manager for AIX:

- *IBM Infoprint Manager for AIX: Planning Guide*, G544-5833. This publication helps you prepare to use Infoprint Manager for AIX. It addresses migration from previous versions of the product. Finally, this publication explains the differences between the AIX and Windows version of Infoprint.
- *IBM Infoprint Manager for AIX: Getting Started*, G544-5817. This publication helps you install and configure IBM Infoprint Manager for AIX. It focuses primarily on server and client system software configuration.
- *IBM Infoprint Manager for AIX: HACMP User's Guide*, G544-5818. This publication helps you install and configure HACMP with IBM Infoprint Manager for AIX. It also tells you how to use HACMP with IBM Infoprint Manager for AIX.
- *IBM Infoprint Manager for AIX: Procedures*, G544-5815. This publication describes the primary tasks necessary for setting up an Infoprint environment, submitting print jobs, scheduling jobs, and managing the print environment. This publication contains all the IBM Infoprint Manager for AIX procedures that are available as topics on the web in book format, including an index and table of contents for ease of retrievability.
- *IBM Infoprint Manager: Reference*, S544-5475. For print administrators, operators, and application programmers with the need to perform command-line functions, this publication describes the commands, utilities, transforms, attributes, and attribute values associated with Infoprint.
- *PSF Direct Network Configuration Guide for System/370*, S544-5486. For system administrators or network specialists responsible for configuring a system for Print Services Facility (PSF) Direct. PSF Direct is a function of IBM Infoprint Manager for AIX that allows another PSF program (PSF/VM, PSF/MVS, or PSF/VSE) to print remotely, using the SNA LU 6.2 protocol, on printers supported by Infoprint. The PSF program sends the print data stream directly to the Infoprint printer.
- *IBM PSF for AIX: AFP Upload Configuration Guide Using SNA Server/6000*, S544-5422. For system administrators, this publication describes how to configure AFP Upload on both AIX (client) and MVS (server) to send files to the JES spool on the MVS server, using a SNA Server/6000 protocol.
- *IBM PSF for AIX: AFP Upload Configuration Guide Using TCP/IP*, S544-5423. For system administrators, this publication describes how to configure AFP Upload on both AIX (client) and MVS (server) to send files to the JES spool on the MVS server, using a TCP/IP protocol.

## Infoprint Manager for Windows Publication Library

Infoprint Manager for Windows provides publications in PDF format on a CD-ROM supplied with the product. You can download PDF versions of these publications or order printed copies of these publications from IBM at the following website:

**Notes:**

1. There is a fee for the printed manuals.
2. You can use the form number specified for a publication to order a PDF or printed version.

Here is the list of publications for Infoprint Manager for Windows:

- *IBM Infoprint Manager for Windows: Planning Guide*, G544-5716. This publication helps you prepare to use Infoprint Manager for Windows. It describes features of this product and compares its functions to those of IBM Print Services Facility for OS/2 (PSF for OS/2). It addresses migration from PSF for OS/2 at a high level. Finally, this publication explains the differences between the AIX and Windows version of Infoprint.
- *IBM Infoprint Manager for Windows: Getting Started*, G544-5717. This publication helps you install and configure Infoprint Manager for Windows. It focuses primarily on server and client system software configuration, but it also includes information for the IBM 4159 Model 001 S/390 Parallel Channel Emulator Card.
- *IBM Infoprint Manager for Windows: Procedures*, G544-5814. This publication contains all the Infoprint Manager for Windows procedures that are available as topics on the web in book format, including an index and table of contents for ease of retrievability.
- *IBM Infoprint Manager: Reference*, S544-5475. For print administrators, operators, and application programmers with the need to perform command-line functions, this publication describes the commands, utilities, transforms, attributes, and attribute values associated with Infoprint.

For information on the use of PSF Direct with Infoprint Manager for Windows, visit the Product Library page for Infoprint Manager for Windows at <http://www.ibm.com/printers/R5PSC.NSF/Web/ipmntrefinfo>.



---

## Chapter 2. Setting up Infoprint Submit

---

### Windows requirements

Infoprint Submit has these minimum requirements:

- 486-66 MHz processor
- PC running Windows NT 4.0 Service Pack 6A or later, or Windows 2000
- 16 MB RAM
- CD-ROM
- 3.5-inch diskette drive
- 10 MB hard drive space
- Local area network (LAN) connection (Ethernet or token-ring)
- TCP/IP
- Access to the Infoprint AIX Server

---

### Installing Infoprint Submit for Windows

This section contains information that you need to install Infoprint Submit.

Insert the Infoprint Manager for AIX Print-on-Demand Feature (1 of 2) CD-ROM into the drive. The install program starts automatically.

1. Select to install Infoprint Submit.
2. Follow the instructions as directed from the installer.

### Installing a service update for Infoprint Submit

To install a service update, insert the PTF CD-ROM into the drive. The install program starts automatically.

1. Select to install Infoprint Submit.
2. Follow the instructions as directed from the installer.

**Note:** You must have the Version 4.1 level of Infoprint Submit installed for the service update to install correctly. If you are currently using Version 3.2, first install the Version 4.1 product and then install the service update as described above.

### Installing associated software and printer drivers

If you wish to create PostScript jobs for Infoprint Manager for AIX, you should install printer drivers and PostScript Printer Description files (PPDs) on each of the systems that you use for this purpose. Printer drivers are needed on the workstations that are used to submit jobs to the Infoprint Manager server to ensure that the correct driver is used. In addition, if you have users who are producing PostScript files on their workstations that they want printed on the Infoprint Manager printers, you need to load Infoprint Manager printer drivers onto these workstations.

IBM provides an Adobe PostScript Driver installer on the Infoprint Manager for AIX Print-on-Demand Feature CD-ROM, in the directory **win\drivers\postscript**. This installer can be used to install one of four IBM-supplied PPDs or a generic PostScript print driver.

To begin the installation, double-click on the self-extracting **winsteng.exe** file, and follow the installation instructions. When asked to select a printer, you can choose the generic driver, or click the Browse button and navigate to the **win\drivers\postscript** directory to select a PPD for the Infoprint 60, InfoColor 70, Infoprint 4000, or Infoprint 4100 printer.

IBM also provides AFP Workbench for Windows. The AFP Workbench viewer displays AFP and ASCII files, including overlays and page segments, in a WYSIWYG format. To install this tool, go to the directory **win/workbench** and double-click on the **setup.exe** file.

**Note:** After installing Infoprint Submit, you need to configure the logical destination on the AIX server to accept jobs from the workstation printer drivers. See *IBM Infoprint Manager for AIX: Procedures, G544-5815* for information about creating and managing logical destinations.

---

## AIX Fast Connect for Windows

If you submit jobs from an Infoprint Submit client on a Windows system, you can decide to share files between your Infoprint AIX server and your Infoprint Submit client. By following the procedure described in Configuring Infoprint Manager to support saving RIP files and preflighting from Submit, you can create an **/ipdata** file system.

The **/ipdata** file system provides a two-way connection between the client machine from which the job tickets have been submitted and the server that sends them to the printer. This capability can save both time and money. One example pertains to the raster image processor (RIP) file that is generated during the printing process. You can use the **/ipdata** file system to save your RIP files for reprinting jobs instead of having to RIP them again. If you have the Adobe Acrobat Reader you can preview PostScript, PDF and TIFF files before they are sent to the printer. If you select the AFP Workbench viewer as your Ripped file viewer, you can view AFP, GIF, and JPEG RIP files before printing them.

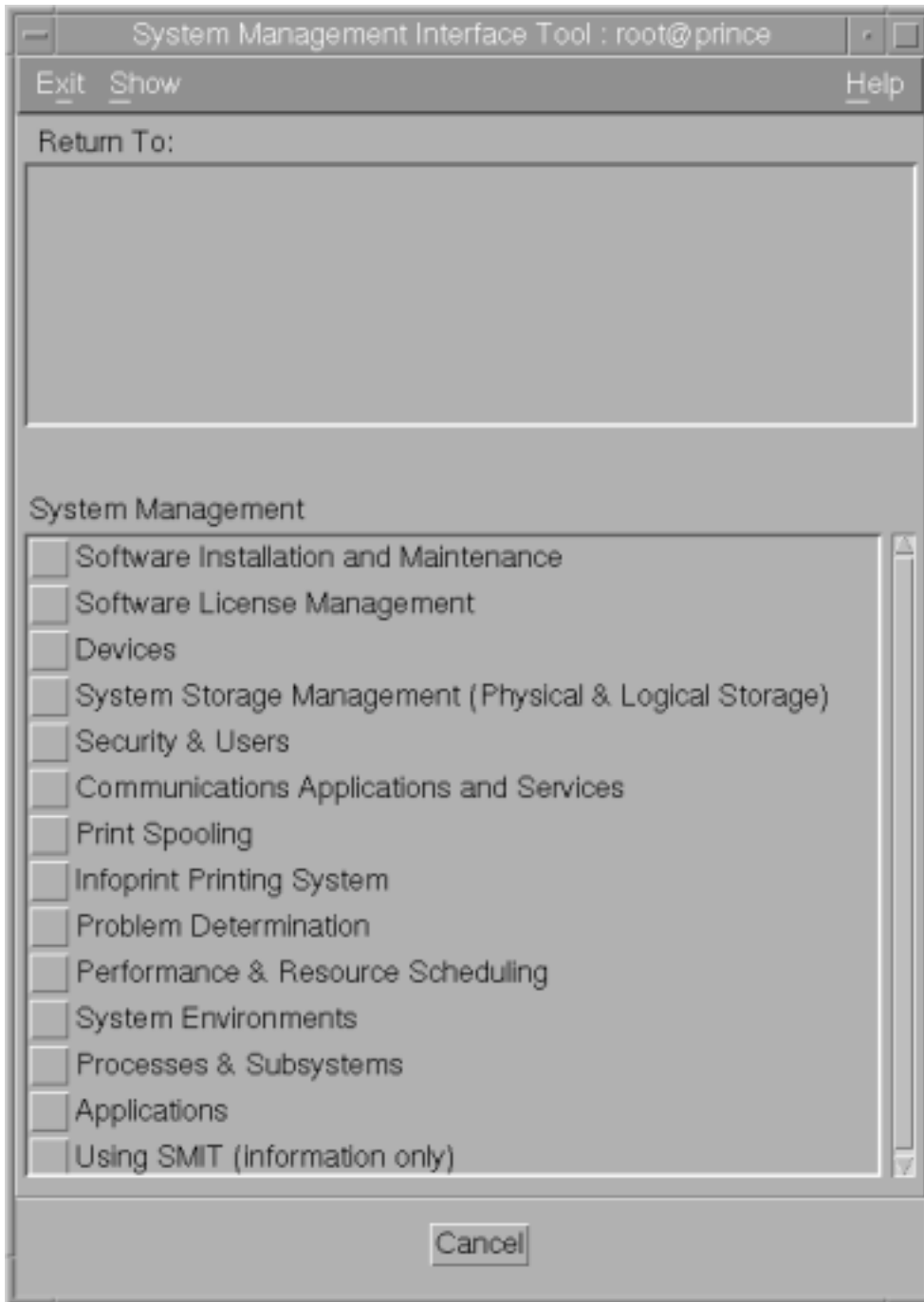
### Notes:

1. On an Infoprint Manager for AIX Version 4.1.0 system, NFS or other file sharing is required between workstations and the Infoprint Manager server.
2. If you plan to connect your AIX server to Windows workstations and your Infoprint AIX server is running AIX 4.3.3 or higher, the IBM package Fast Connect for POWER is required. Fast Connect supports a NetBIOS connection. To access current information supporting the Fast Connect package, specify the following url in your browser:  
<http://www.ibm.com/servers/aix/products/ibmsw//manage/fastconn.html>.
3. When you install the Fast Connect for POWER product on your Infoprint AIX server, you may receive a failure notification on fileset **cifs.base.ldap 3.1.0.0**, asking you to install fileset **ldap.client.rte 3.1.1.5** before proceeding. If you are using the product to connect to Windows workstations, you can ignore this message and proceed to "Setting up Fast Connect for Infoprint Manager".
4. If you use Netware with Submit or if you use Macintosh with Submit, contact your IBM SE for configuration assistance or platform specific recommendations regarding software support.

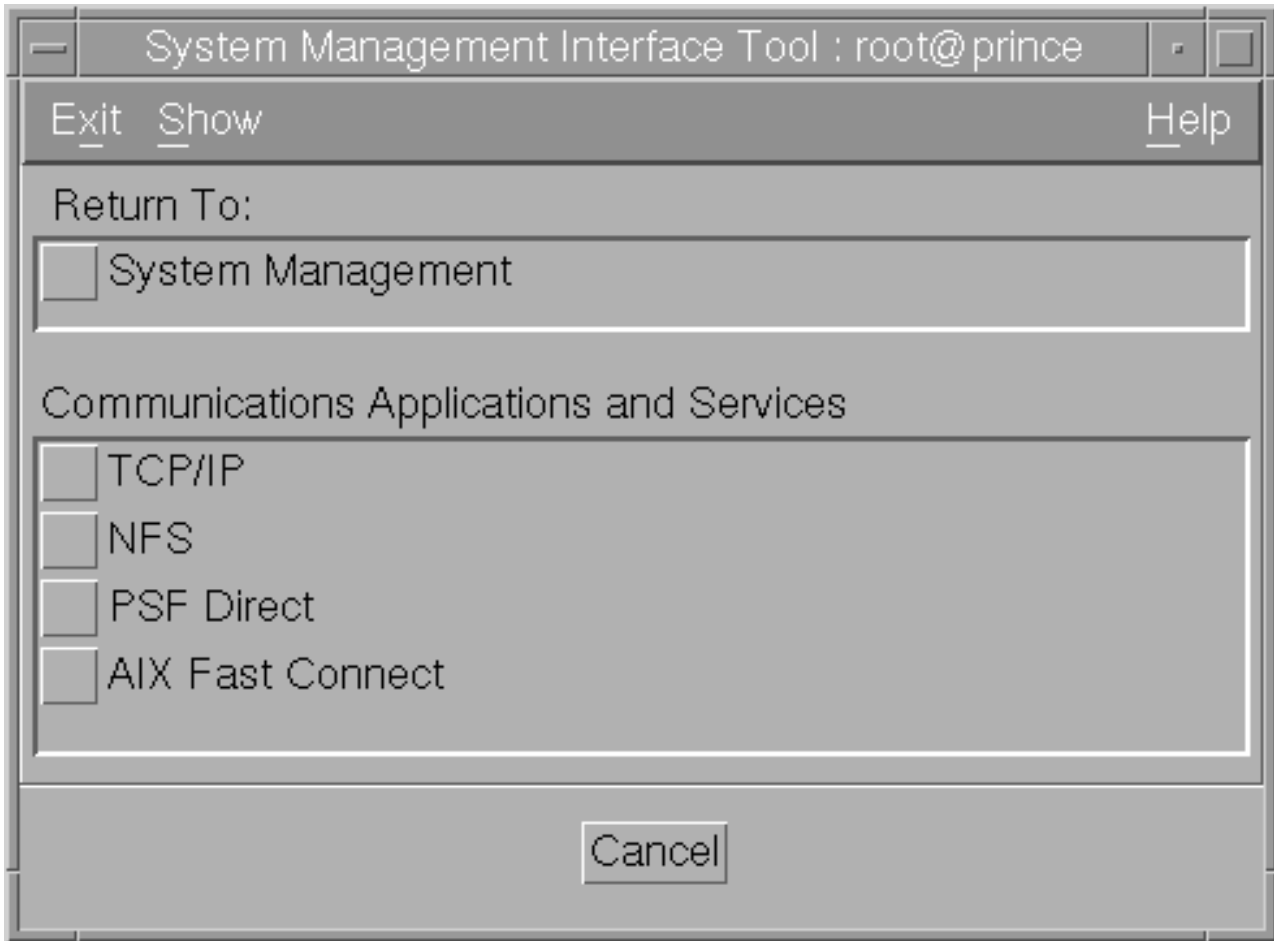
## Setting up Fast Connect for Infoprint Manager

After installing AIX Fast Connect on your AIX server, you must do the following:

1. Open a dtterm window, type smit. The following screen displays.

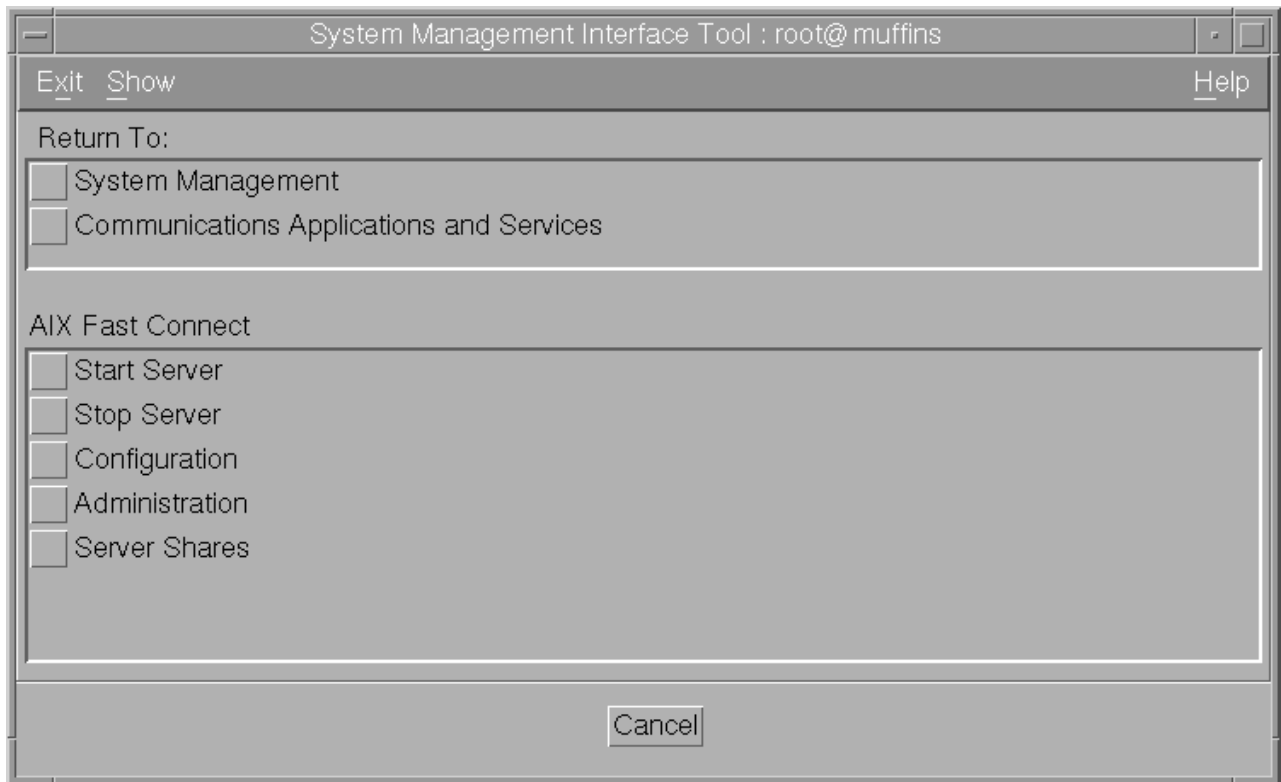


2. Select **Communications Applications and Services** and the following window displays.

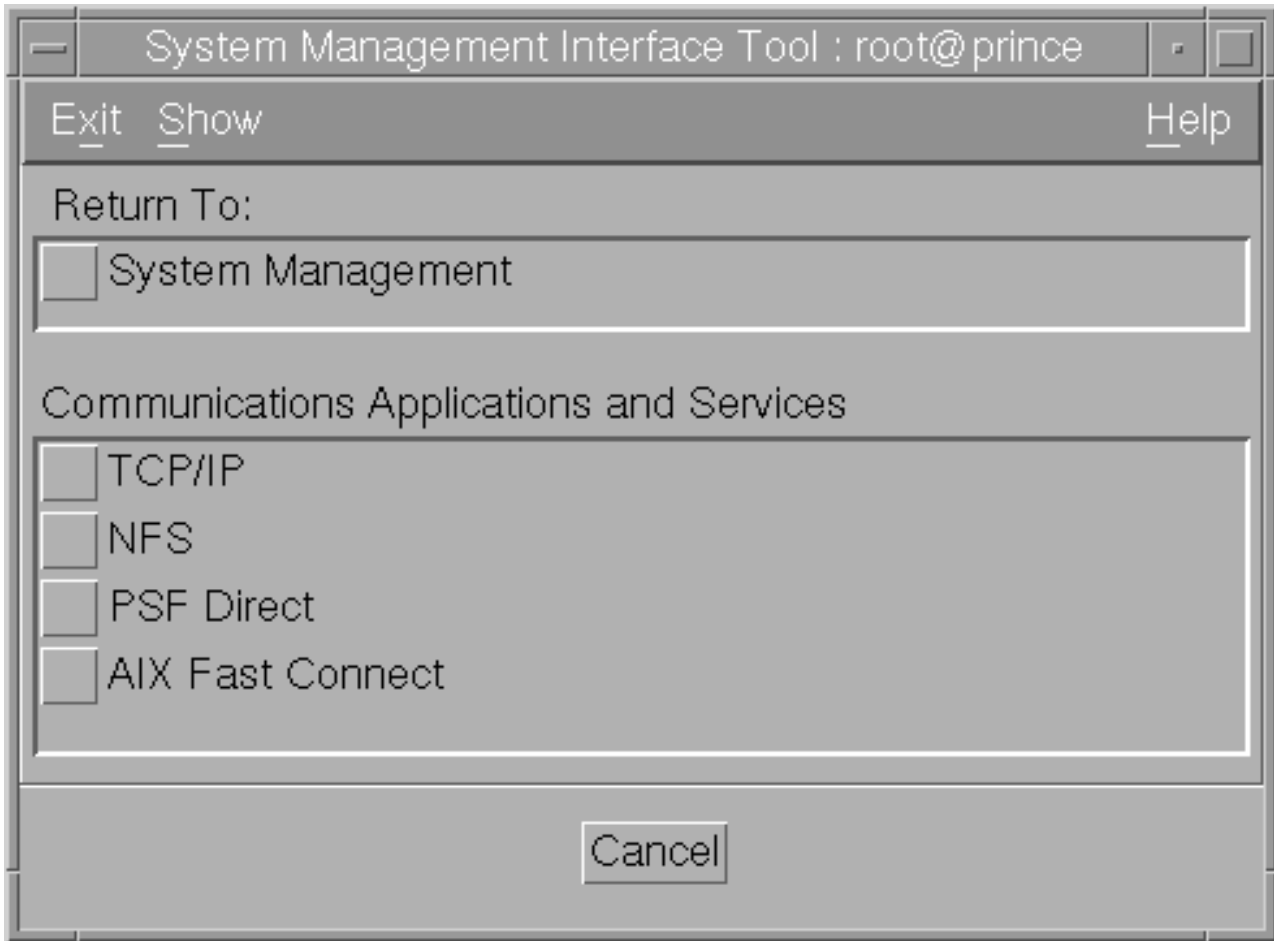


3. Select **AIX Fast Connect** and the following window displays.

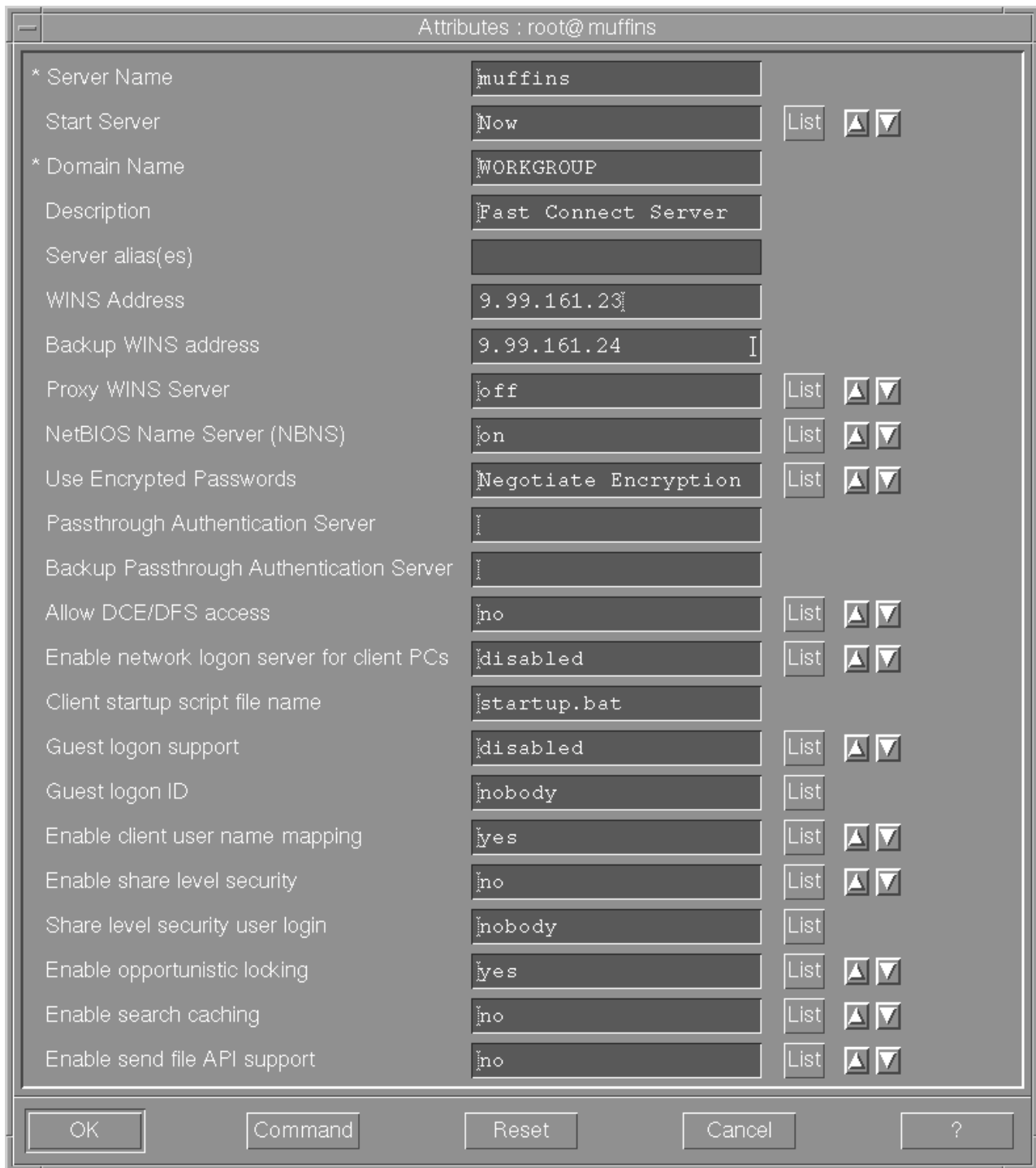




4. Select **Configuration** and the following window displays.



5. Select **Attributes** and the following window displays.



When the **Attributes** window displays, notice that your server name appears by default. Use the default values with the following exceptions:

- For the **Start Server** field, select **Now** from the list.
- For the **Use Encrypted Passwords** field, select **Negotiate Encryption** from the list.

If your configuration supports more than one domain, you must use the **WINS Address** field to specify the IP address for the Windows Internet Name service

(WINS) server on the Infoprint Windows server with which you plan to interoperate. Note that you must specify this address if you choose not to specify the **Domain Name** field.

For the **Domain Name** field, ensure that you specify the domain name (WORKGROUP in this example) for the group of Infoprint servers that interoperate to provide resources as a single unit. Note that this example specifies both a **WINS Address** field value and a **Domain Name** field value.

6. Once you have completed specifying these values, click the **OK** button.
7. Once successful, return to the SMIT window displayed within steps 3 and 4 of this procedure to stop and start the AIX Fast Connect server so these changes can take effect.

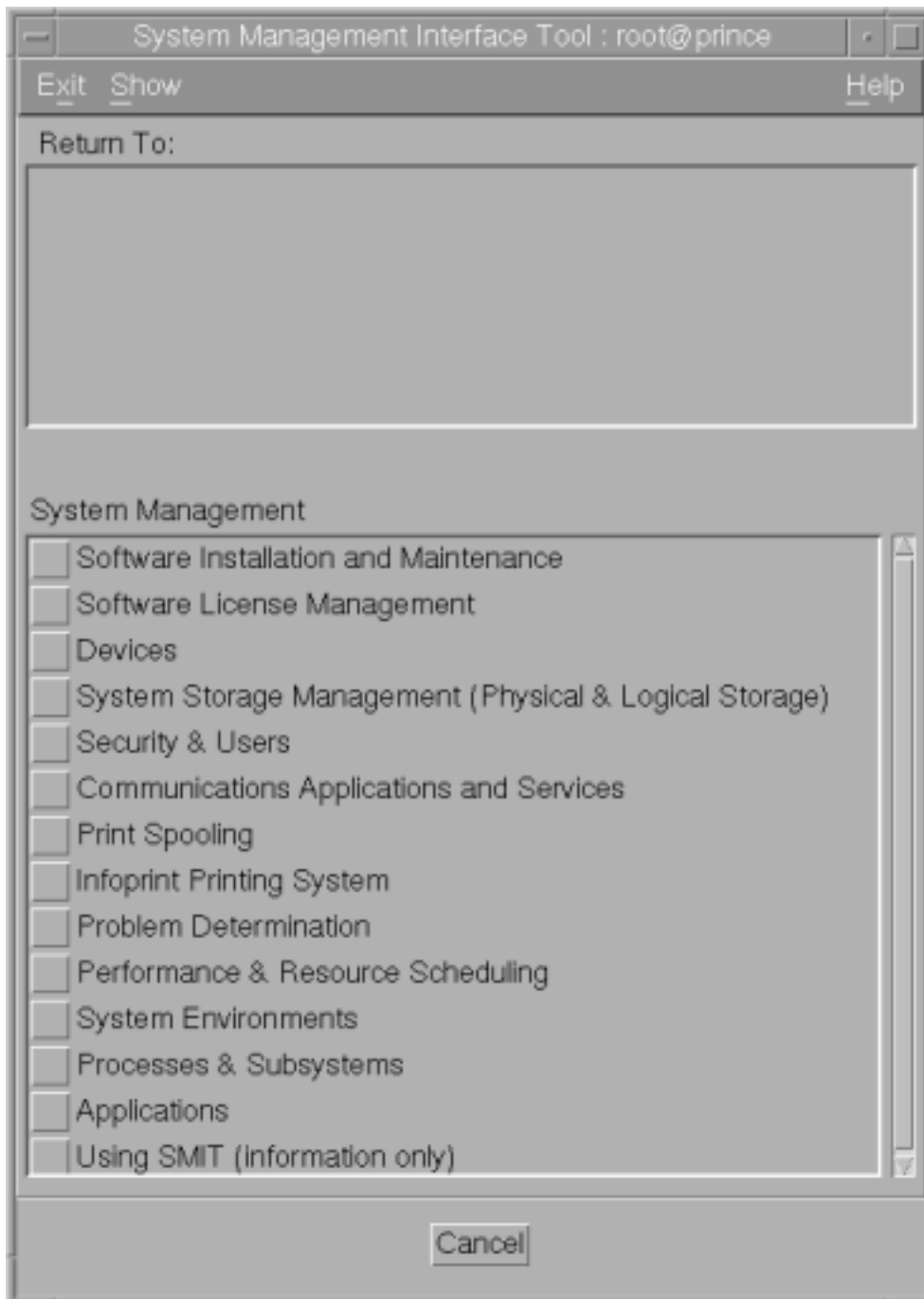
---

## Configuring Infoprint Manager to support saving RIP files and preflighting from Submit

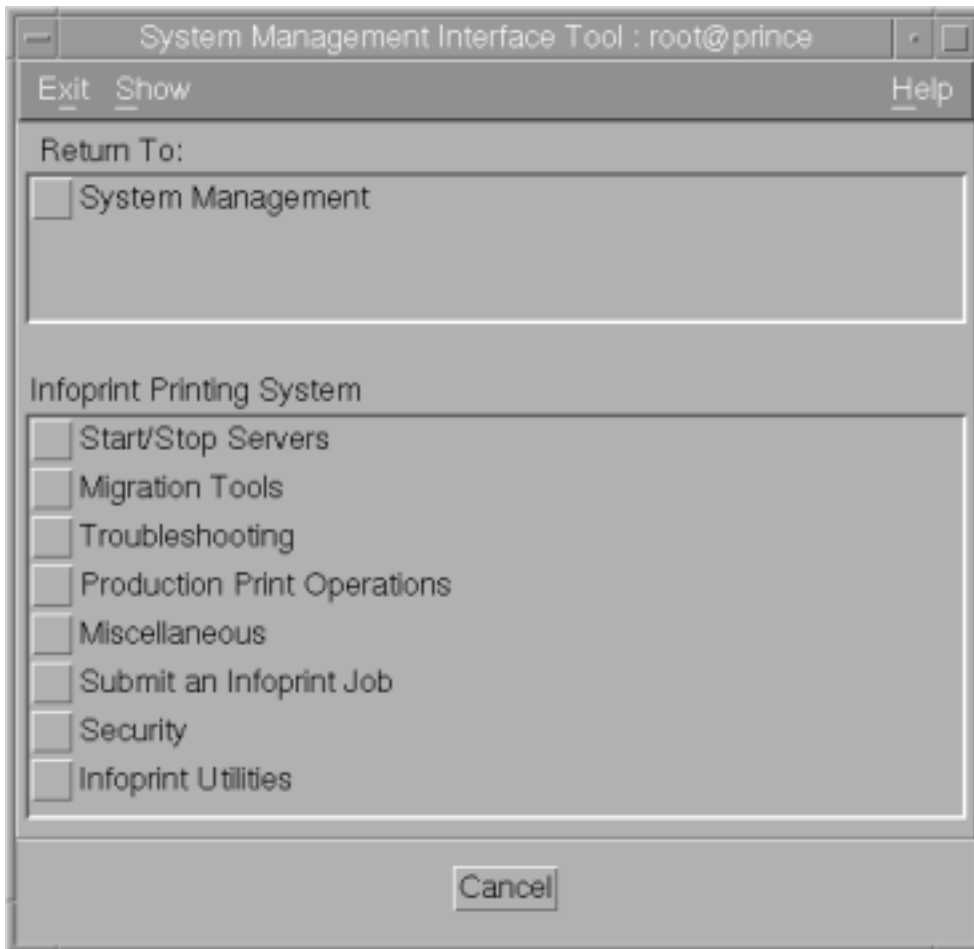
If you have installed Fast Connect and you use Submit from Microsoft Windows workstations, you can configure Infoprint Manager on your AIX system with user access and a shared directory that Infoprint Manager will use for saving processed or rasterized files. Where applicable, this directory is also used when users preview Postscript files from the Infoprint Manager Submit application.

To configure:

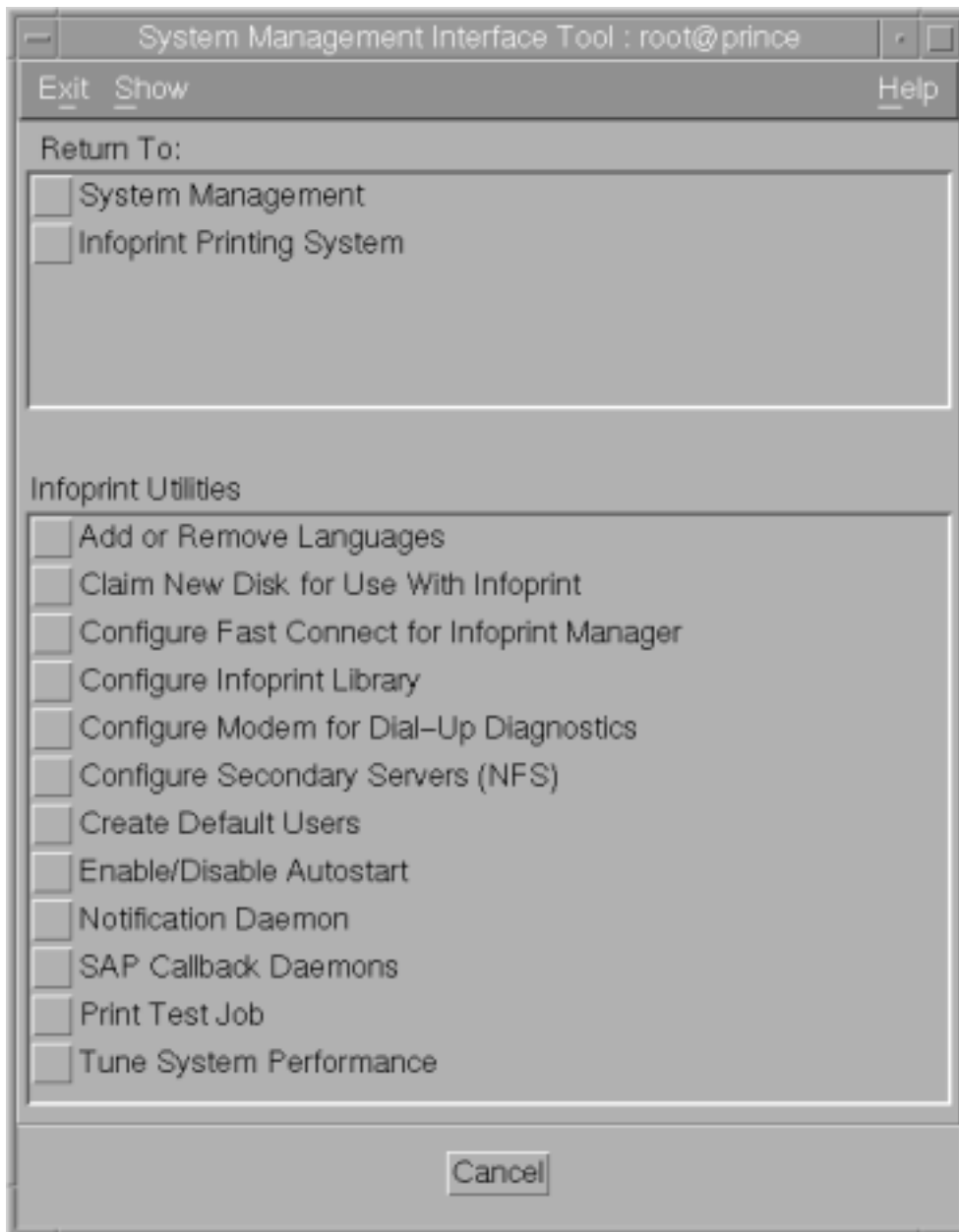
1. From the dtterm window, type SMIT so that the screen on the following page displays:



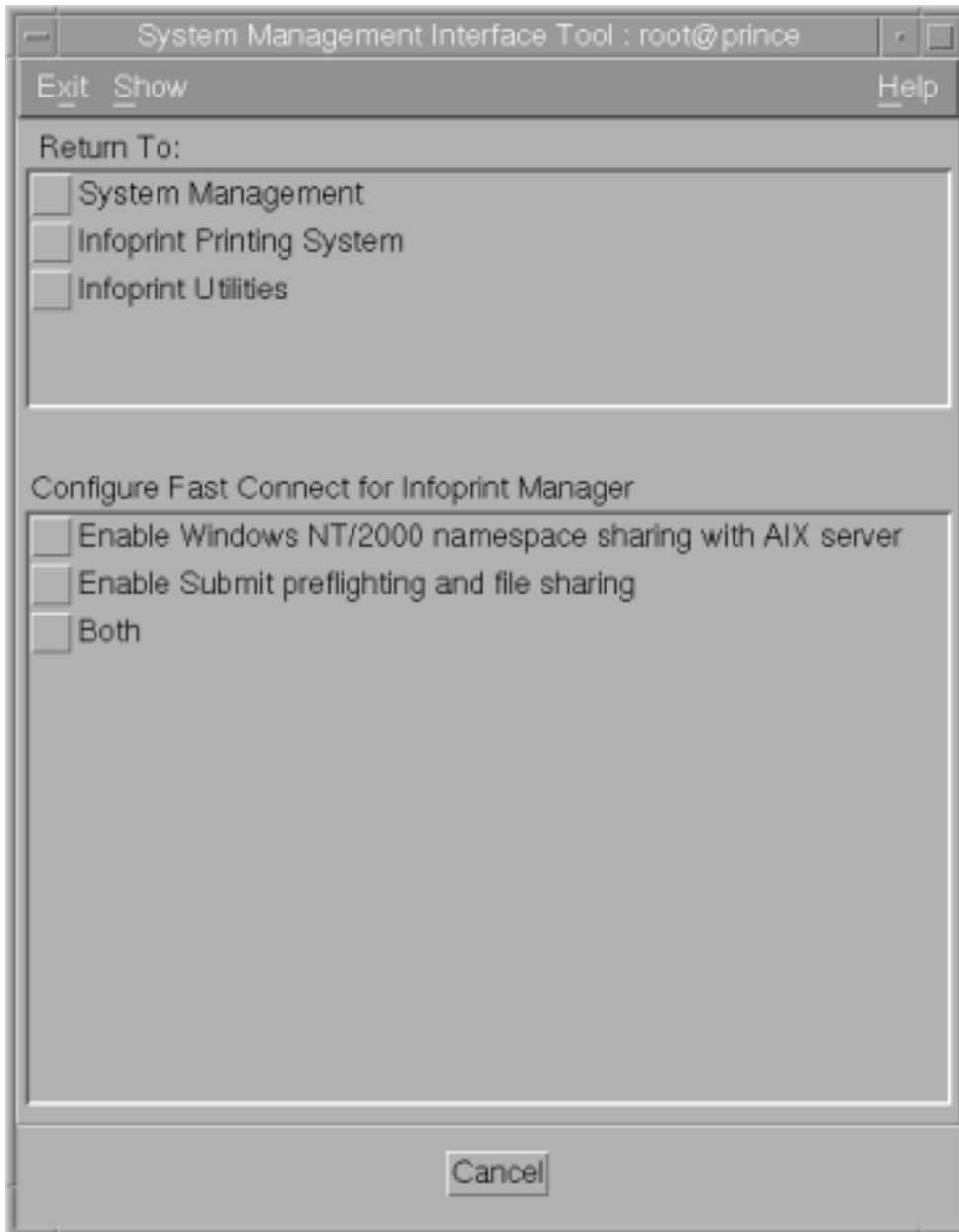
2. Select **Infoprint Printing System**, and the following screen displays:



3. Select **Infoprint Utilities**, and the following screen displays:



4. Now select **Configure Fast Connect for Infoprint Manager**, and the following screen displays:



5. Select **Enable Submit Preflighting and file sharing**.

An animated icon of a running man will raise his arms when the setup is complete. Your AIX system will now have a shared directory (**/ipdata**) that some Infoprint applications use for saving files and sharing data.

---

## Configuring Windows and Infoprint Submit to use Fast Connect

On the Windows workstation, map a network drive to the directory that your resources reside in.

1. Open Windows NT/2000 Explorer.
2. Select **Tools --> Map Network Drive**.



### Windows NT

- a. In the **Map Network Drive** dialog,
  - 1) In the **Drive** field, select a drive letter that you are not currently using.
  - 2) In the **Path** field, type the path `\\servername\ipdata` where `servername` is the host name of the AIX system where Infoprint Manager is installed.

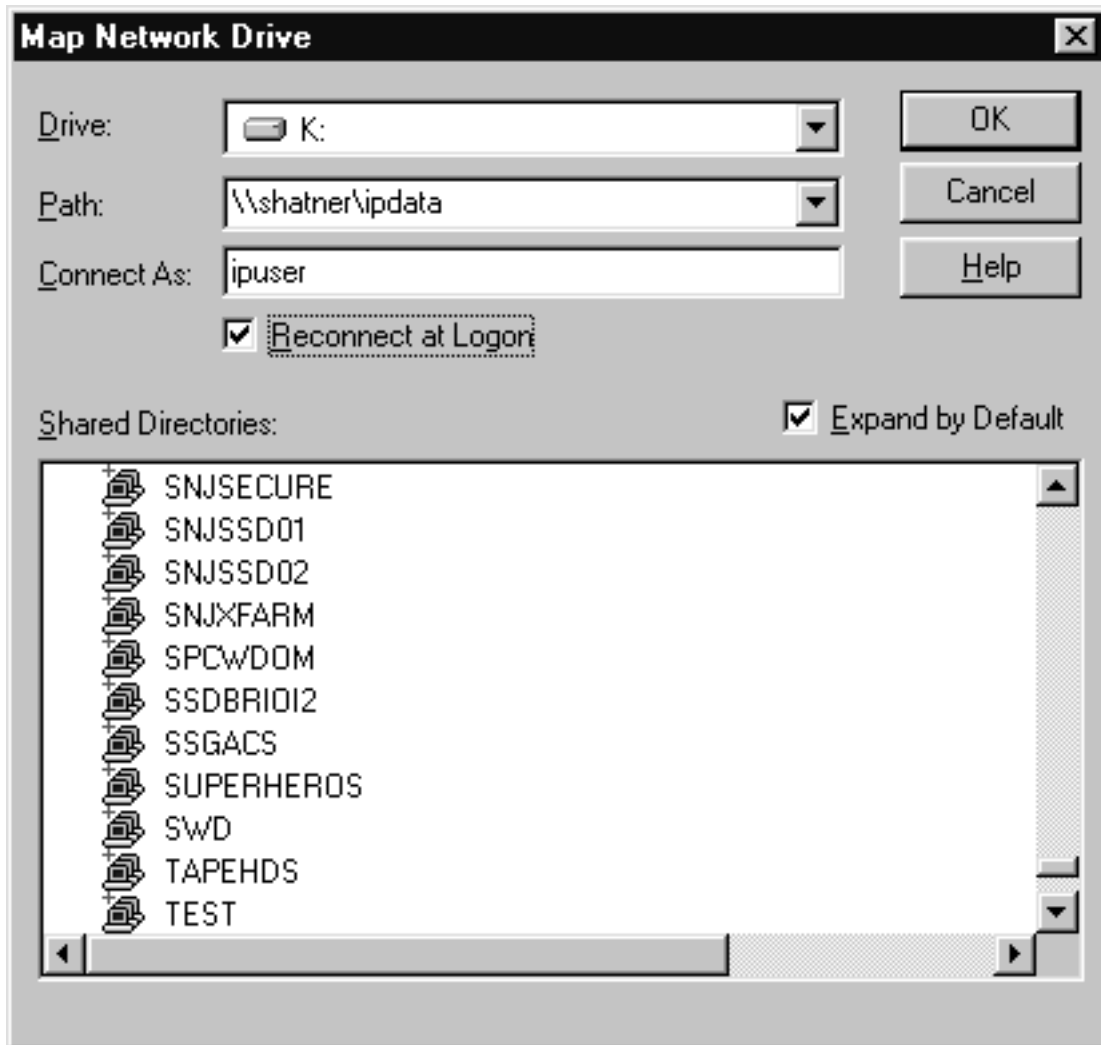


Figure 1. Map to...

- b. Type the user name **ipuser** in the **Connect as** field, and select **Reconnect at logon**.
- c. Click **OK**. A dialog may open and ask you to enter the password for this user.
- d. Type the password that you set for this user (if required) and click **OK**.

### Windows 2000

- a. In the **Map Network Drive** dialog, select a drive letter that you are not currently using from the drop-down menu in the **Drive** field.

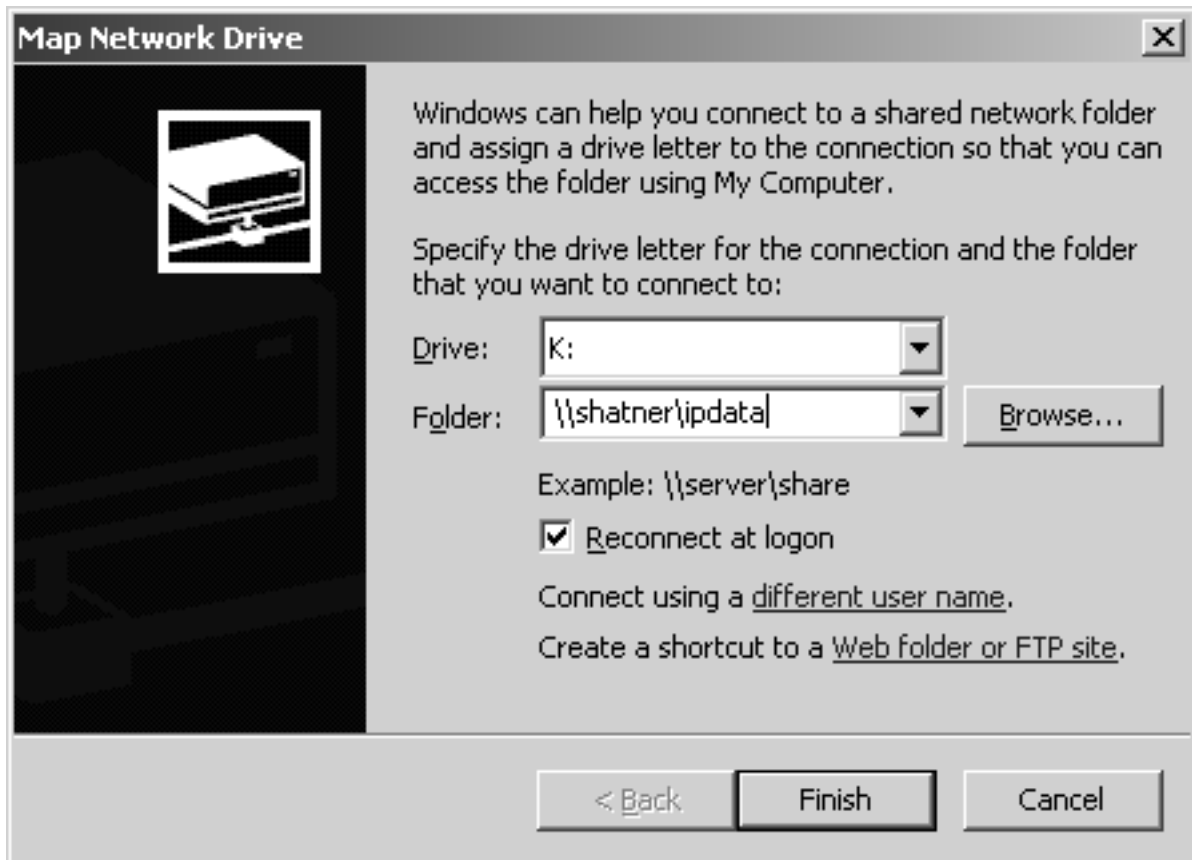


Figure 2. Map Network Drive

- b. In the **Folder** field, type the path `\\servername\ipdata` where `servername` is the host name of the AIX system where Infoprint Manager is installed.
- c. Select **Reconnect at logon**.
- d. Click the **Connect using a different user name** link.
- e. In the **Connect As** dialog, type the user name `ipuser` and password (if required).

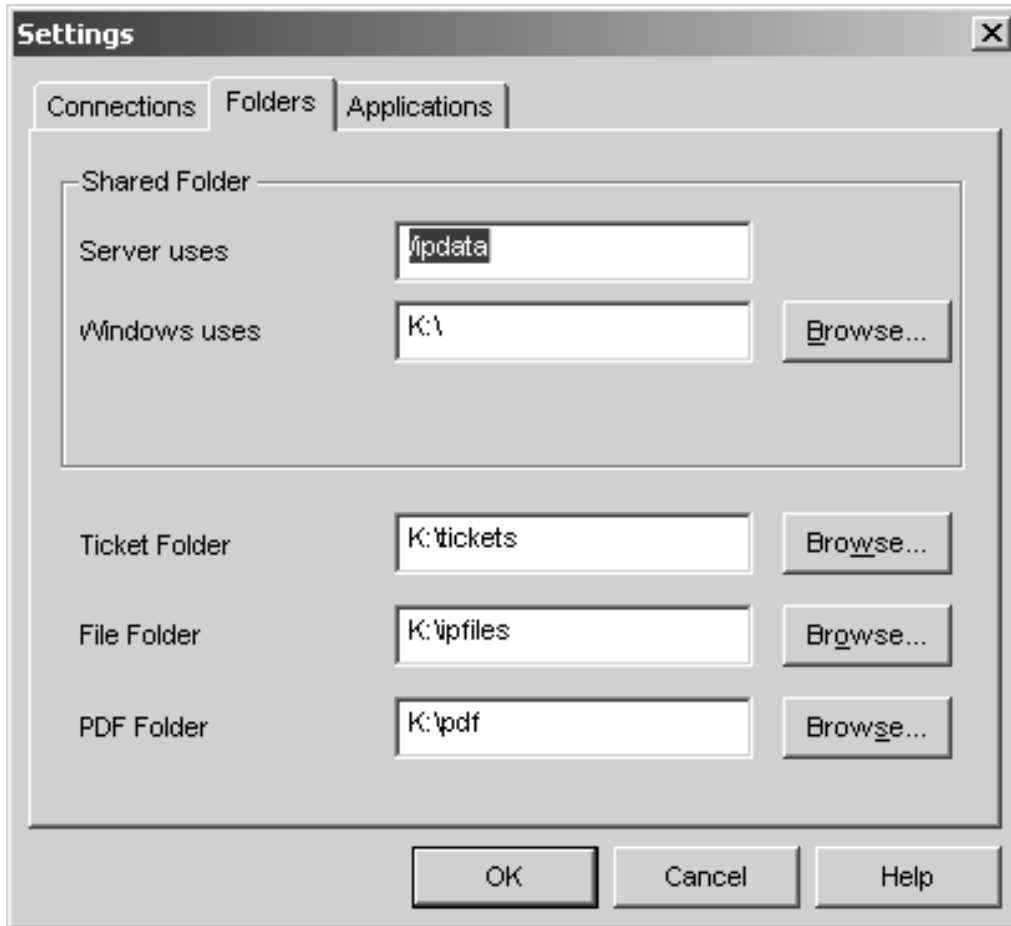


Figure 3. Connect As...

- f. Click **OK** in the **Connect As** dialog.
- g. Click **Finish** in the **Map Network Drive** dialog.

In addition, within Infoprint Submit you need to change the folders for the shared file system. Refer to the steps below and to the following figure.

- 1. Start Infoprint Submit by clicking on the desktop icon.
- 2. Go to **Options**—>**Setup** to open the Settings window.
- 3. Click the Folders tab to display the Folders page.
- 4. Specify the fully qualified path name in the Windows uses entry field.





---

## Chapter 3. Using Infoprint Submit to process a job

IBM Infoprint Submit is used through the life cycle of a job. A print shop uses Infoprint Submit on a Windows system to create a job ticket for the job, submit the job to the Infoprint server on AIX for printing, and track the job.

---

### Job tickets

An Infoprint job consists of a job ticket and all the files associated with that job. A job ticket contains all the specifications for a job. The job ticket refers to the customer's job data and resources and pulls them together in a job bundle. You can create a job ticket by using Infoprint Submit.

You can print any part of the data by submitting a print job.

---

### Working with print jobs

When using Infoprint Submit to create the job ticket, you will identify and organize the printable files and other resources that make up the job. Processing a job ticket includes these steps:

1. Creating a new job ticket.
2. Adding files, sheets, and documents to the job ticket.
3. Selecting the layout of the job, the desired server and printer, and other attributes of the job.
4. Submitting the job and setting print options, such as saving the RIP file or holding the job at the printer.
5. Tracking the job by displaying messages.

### Creating files for printing

You generate the printable files that you submit to Infoprint, file by file, from the application that you use for authoring. You can use the Adobe PostScript driver and IBM Infoprint PostScript Printer Description (PPD) files to convert files to PostScript. You can use Infoprint Scan to create printable files from hardcopy.

**Note:** Infoprint Scan is a PRPQ (5799-GTG).

### Creating and processing a job ticket

Once you have installed the Infoprint Submit application on your workstation, you can begin creating job tickets that support the orders you receive from customers.

#### Describing your job

Using an Infoprint Submit Job Ticket window, you can describe your job. The description can include a job name, an ID, the customer name, special instructions, and other information that will assist you as you refer to the job ticket.

Figure 4 on page 22 shows an Infoprint job ticket.

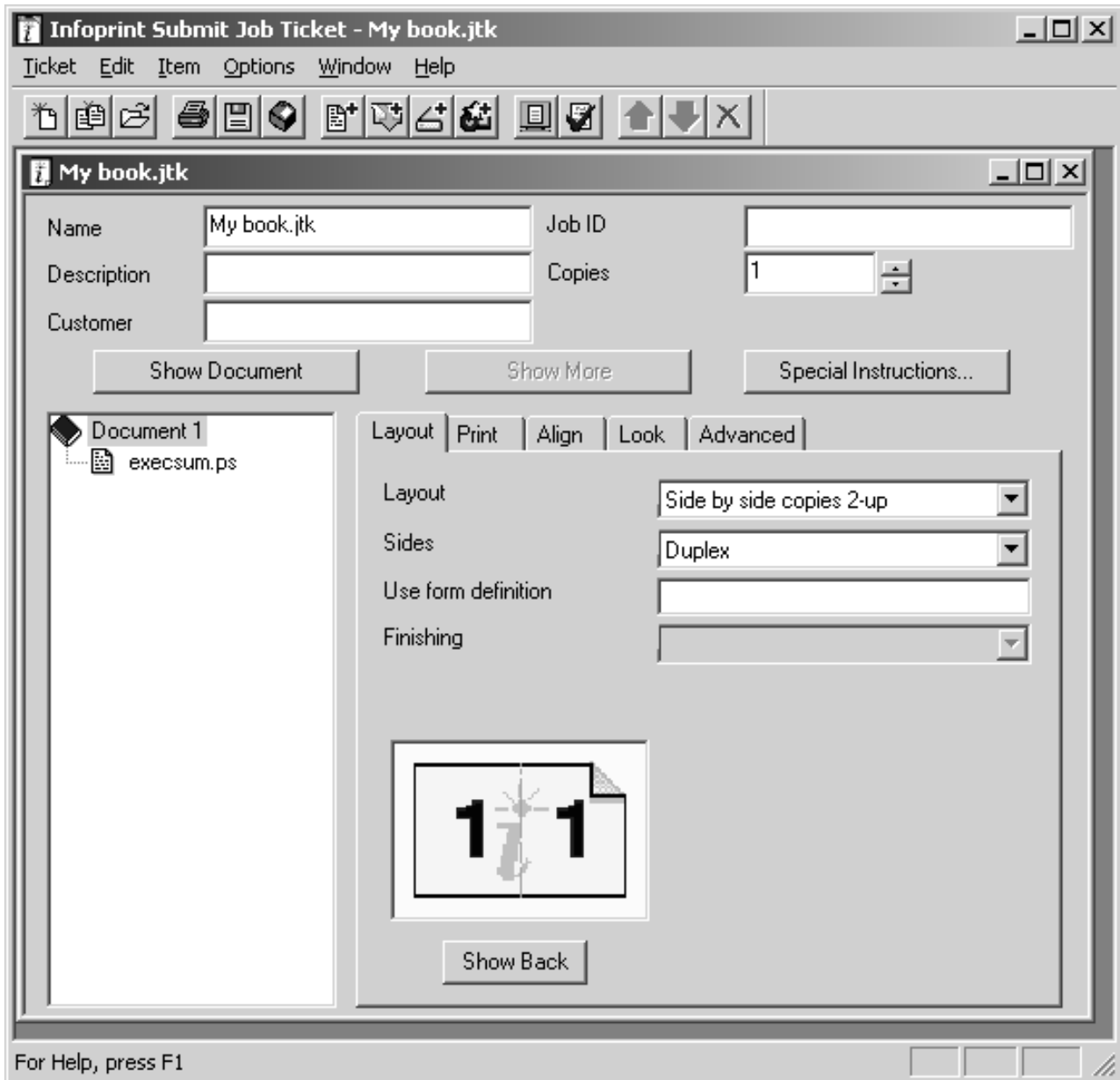


Figure 4. An example of an Infoprint Submit job ticket

To begin working on a new ticket, you start Infoprint Submit and the Job Ticket window displays.

As you create the job ticket, use the **Help** menu from the Job Ticket window or the **Help** button on the dialogs to guide you.

You can create a new job ticket or open previously created job ticket to use as a template for your new job ticket.

Figure 5 on page 23 shows the **Ticket** menu, which contains general tasks that you can perform as you work with job tickets. Notice that you can access the most recently edited tickets from this menu.

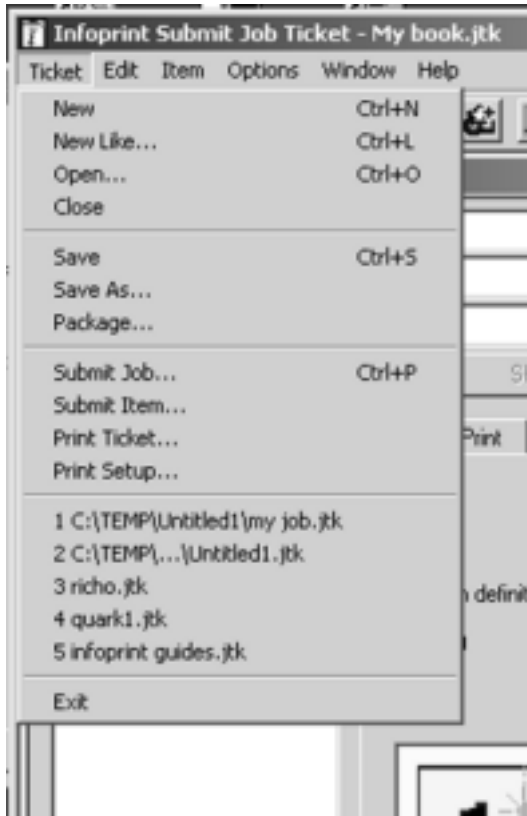


Figure 5. Infoprint Submit job ticket menu

### Specifying how you want the job to print

You can describe the layout of your document and specify alignment values, instantly viewing a graphical representation of the alignments and layouts you select. You can dynamically adjust characteristics such as the front to back alignment of your document without having to print the job to verify the page placement.

Figure 6 on page 24 shows the Adjust Page Placement window. If the image is smaller than the page, you use this window to adjust the position of the image on the page.

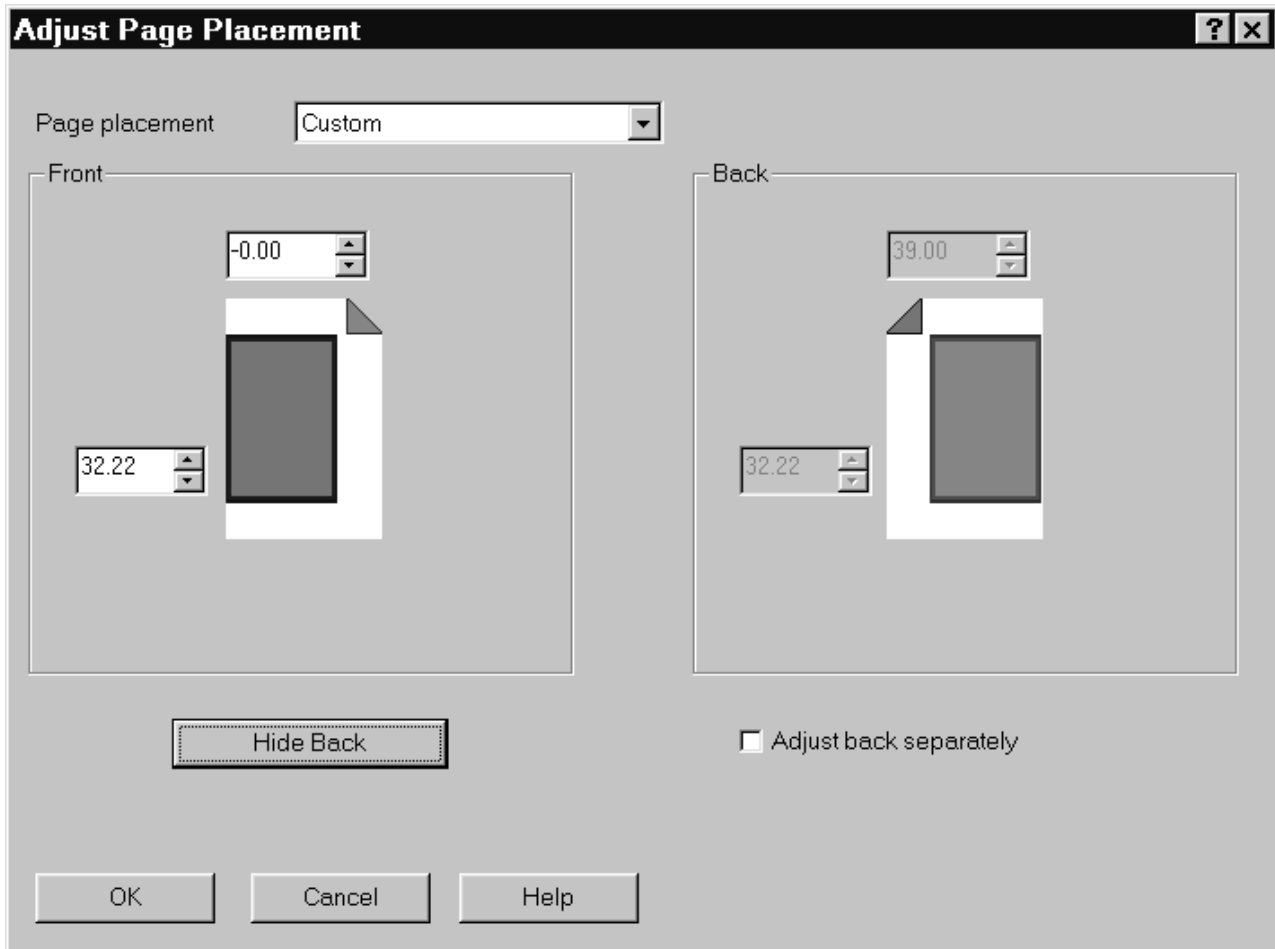


Figure 6. The Adjust Page Placement window

**Using enhanced grab and move to shift page images on Submit:**

1. Select the **Align** tab of the **Infoprint Submit Job Ticket** window.
2. Click on the **Show Placement** push button.
3. From the **Adjust Page Placement** window, you can shift or adjust the page placement in any direction.

**Note:** This enhanced support for shifting page images is only supported for PSF-attached Infoprint printers (those printers using the PSF destination support system). You cannot submit a PostScript job to an InfoColor 70 printer and move page images in either a top or left direction.

**Working with files in a job ticket**

You build job tickets by adding items in the correct order that refer to the files that you are printing. The files you print may be printable text files, graphic files, or variable data definition files. Files may reside on your hard disk or in a shared directory on another system.

**Adding variable data items to job tickets**

Variable Data is another item that you can add as you build the job ticket. This feature gives you the ability to customize information in a PostScript file so that each copy of the file that you print is unique.



Figure 7 shows a selected variable data item in a job ticket.

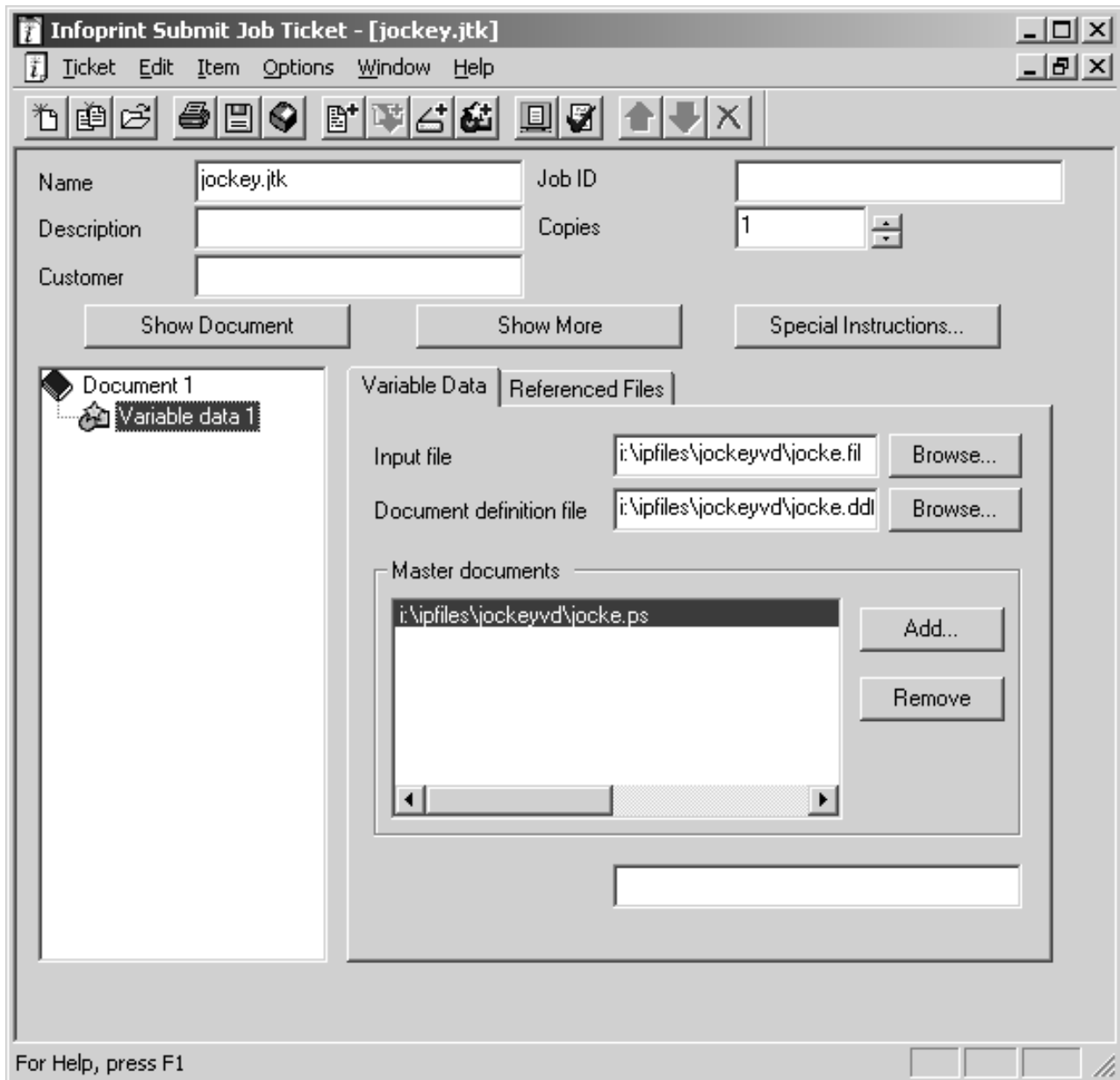


Figure 7. The Variable Data tab of a job ticket

### Viewing and preflighting your files

If the appropriate viewers are installed, you can preview the printable files that you are adding to your job ticket. By default, Infoprint Submit uses the Adobe Acrobat Reader, which you can use to preview PostScript, PDF, and TIFF files. If you select the AFP Workbench viewer as your Ripped file viewer, you can view AFP, GIF, and JPEG RIP files before printing them.

### Submitting a print job

When you select **Submit Job** from the **Ticket** menu, you can indicate which files to print and how to schedule and process your job.

From the **Files** tab, you can choose the printer from a list of printers on your servers. You can specify what to print, how many copies to print, and whether to use a previously processed (RIPped) file or RIP the source file for printing (re-RIP).

Figure 8 shows the **Files** tab that displays when you choose to submit a job. In this case, the **BlankPage.ps** and the **2001.106ta.ps** files have been selected for printing on a logical printer named **Servo**.

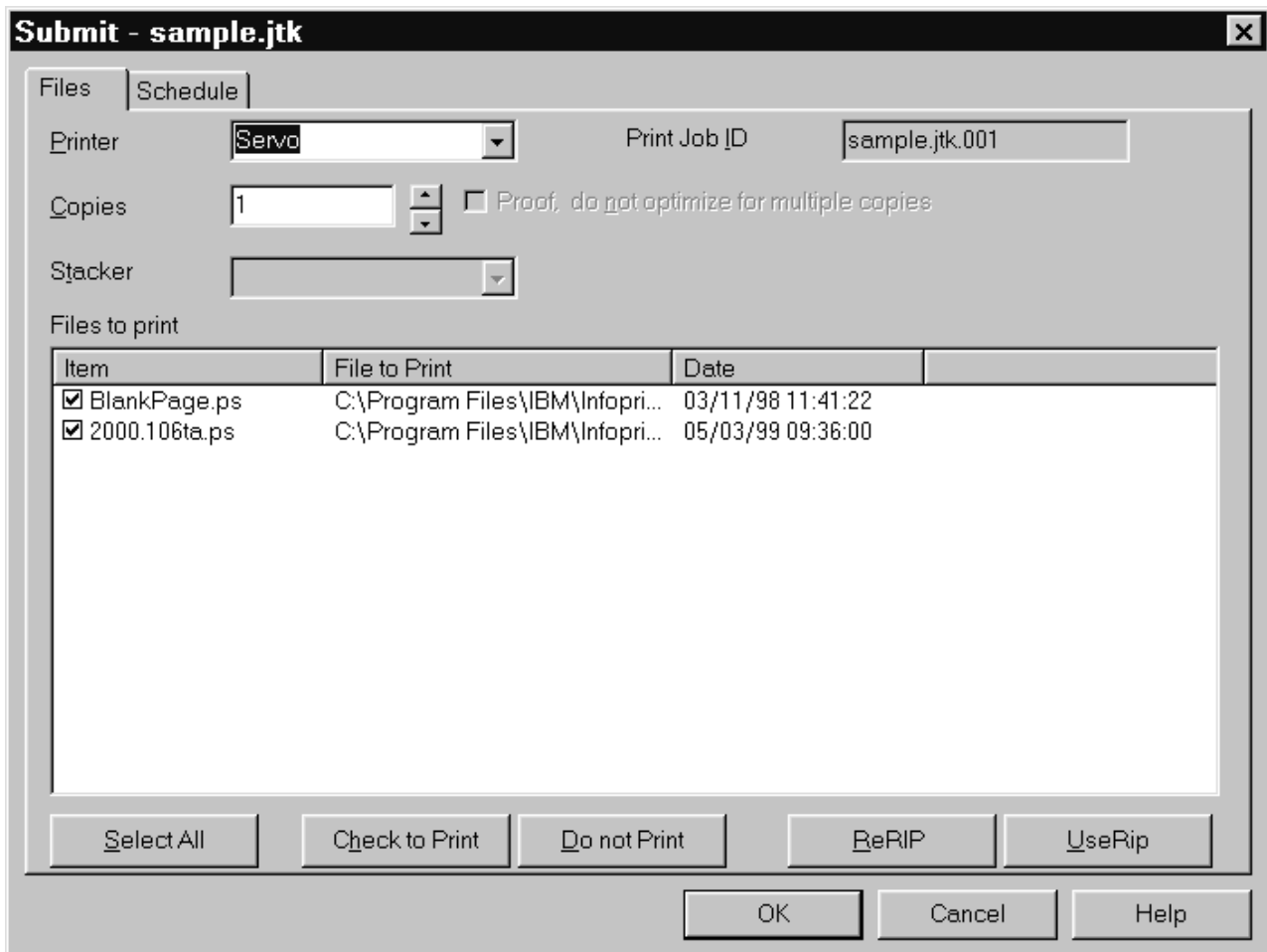


Figure 8. The Files tab for job submission

Figure 9 on page 27 shows the **Schedule** tab, where you indicate when and how you want your job to be processed. Because the time it takes to print a job includes both the processing (RIPing) and the actual printing, you may want to control these activities separately to optimize the flow of paper through your printers. You may want your job to be held in the print queue before being RIPed and printed. You may want to RIP it now, but print it later. You can specify how long you would like your job to be retained on the AIX server so that it can be printed again, and you can choose to specify a time by which the job should be printed.

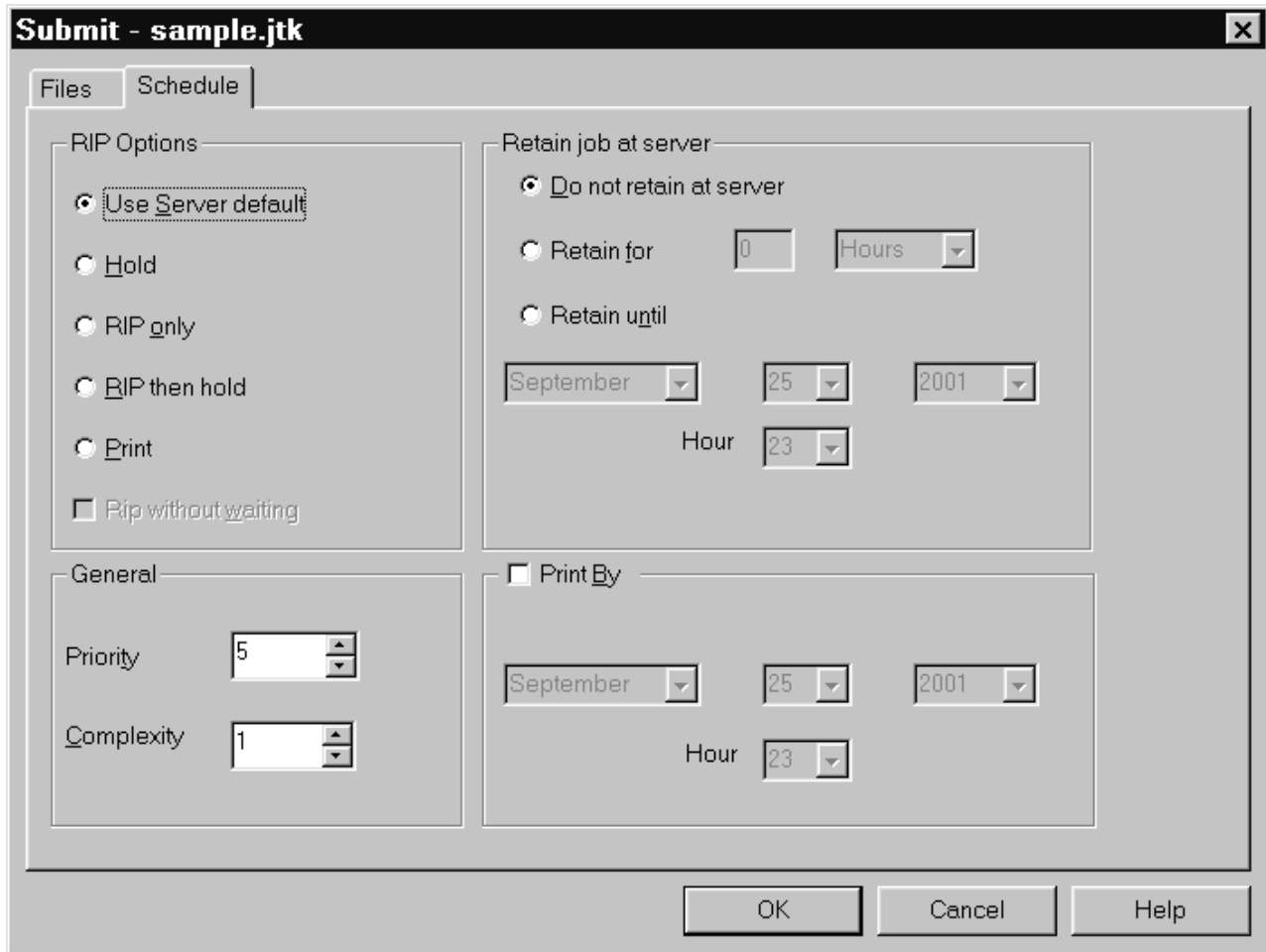


Figure 9. The Schedule tab for job submission

If you select **Print** in the **RIP Options** box on the **Schedule** tab, the job is added to the print queue and will RIP and print automatically. An AIX operator will not have to release the job.

### Saving the RIP output

The raster image processor (RIP) file is generated during the print process. Because PostScript to RIP processing can be costly, you may want to save your RIP files for re-printing jobs to avoid having to RIP them again. To set up the RIP directory, use the following directions.

The RIP file can be saved in the /ipdata file system, which is shared by the AIX system and an Infoprint Submit machine.

When you add a file to your job ticket, you use the **Save Ripped files** check box option on the **Print** tab.

### Verifying that PostScript jobs are ready to print

If your Infoprint system receives a PostScript job from a personal computer system, you must ensure that the Type 1 fonts required to print are either:

- Contained within the job (inline)
- Available on AIX

If the fonts are contained inline, you should have no problem in printing the output. However, if the fonts are not available on AIX, by default a job will be cancelled.

To verify that all fonts are available on AIX and contain the **.pfa** or **.pfb** extensions necessary for printing PostScript, preflight the job before sending it to the printer. To preflight the job from Infoprint Submit, refer to the “Viewing and preflighting files” help topic.

**Notes:**

1. For preflighting to work correctly on the AIX server, you must have enabled font substitution on the AIX server. To perform this task, add the following lines to the `/var/psf/ps2afp/UserInit` file:

```
%!  
turnFontSubstitutionOn
```

2. Only customers with previous versions of Infoprint Manager for AIX have access to preflighting on the AIX server.

## Troubleshooting: missing fonts in PostScript jobs

If a PostScript job is missing fonts, you can correct the problem in these ways:

- Add those fonts to your Infoprint AIX server (refer to *IBM Infoprint Manager for AIX: Procedures*).
- Use the following procedure to create a font conversion table for the PostScript print driver. The font conversion table maps the True Type fonts used on PC programs to the Type I PostScript fonts required on the AIX server.

**Note:** The options might differ slightly on other PostScript drivers. This selection can come from the Acrobat Exchange 2.0 window or an equivalent panel for Adobe PageMaker, Quark Xpress, or a similar application.

1. Select the **Print Setup** option.
2. From the Print Setup window, select the appropriate driver.
3. From the Options pane on this same window, select **Advanced...**
4. From the Advanced... window, select **Use Substitution Table**.
5. From the Substitution window, identify the TrueType font in the PostScript job from the list on the left. Identify an appropriate Adobe Type I font for conversion from the list on the right.

For example, you might create the following mappings:

<b>TrueType</b>	<b>Adobe Type I</b>
-----------------	---------------------

<b>Arial</b>	AvantGarde
--------------	------------

<b>WingDings</b>	ZapfDingbats
------------------	--------------

6. From the Advanced... window, select **OK**.
7. From the Advanced... window, avoid potential storage concerns by specifying the **Clear memory per page** field.  
This value ensures that the PostScript driver does not exceed the memory units available on your PostScript interpreter.
8. From the Graphics pane on the Advanced... window, specify **600** in the **Resolution (DPI)** field. This provides the correct resolution for all Infoprint jobs.

9. From the Graphics pane on the Advanced... window, specify the **Print PostScript Error Information** value. This option ensures that you receive a record of any font problems or fonts that still do not convert to Adobe Type I.  
You can take the default for all other fields.
10. From the Print window, specify the correct level of PostScript under the PostScript Options panel.  
If you are not sure, specify **level 2**, which contains both level 1 and level 2 PostScript.
11. From the Print window, specify **600** in the **Print Quality** field.  
This value should correspond to the **Resolution (DPI)** field on the Advanced... window. If a discrepancy exists, the driver uses the value on the **Print Quality** field.
12. From the Print window, select **Options**.
13. From the Print to File window, specify the output file for the PostScript job:  
`c:\data\sample.ps`

where *sample.ps* is the PostScript file with which you are working.

If you receive any font errors, PostScript fonts might be resident on your PostScript driver but not supplied with the AIX system and IBM printer.

**Note:** Do not attempt to change PostScript data files unless you have a thorough knowledge of the PostScript language. data files unless you have a thorough knowledge of the PostScript language.



---

## Notices

This information was developed for products and services offered in the U.S.A.

IBM may not offer the products, services, or features discussed in this document in other countries. Consult your local IBM representative for information on the products and services currently available in your area. Any reference to an IBM product, program, or service is not intended to state or imply that only that IBM product, program, or service may be used. Any functionally equivalent product, program, or service that does not infringe any IBM intellectual property rights may be used instead. However, it is the user's responsibility to evaluate and verify the operation of any non-IBM product, program, or service.

IBM may have patents or pending patent applications covering subject matter described in this document. The furnishing of this document does not give you any license to these patents. You can send license inquiries, in writing, to:

IBM Director of Licensing  
IBM Corporation  
North Castle Drive  
Armonk, NY 10504-1785 U.S.A.

**The following paragraph does not apply to the United Kingdom or any other country where such provisions are inconsistent with local law:**

INTERNATIONAL BUSINESS MACHINES CORPORATION PROVIDES THIS PUBLICATION "AS IS" WITHOUT WARRANTY OF ANY KIND, EITHER EXPRESS OR IMPLIED, INCLUDING, BUT NOT LIMITED TO, THE IMPLIED WARRANTIES OF NON-INFRINGEMENT, MERCHANTABILITY OR FITNESS FOR A PARTICULAR PURPOSE. Some states do not allow disclaimer of express or implied warranties in certain transactions, therefore, this statement may not apply to you.

This information could include technical inaccuracies or typographical errors. Changes are periodically made to the information herein; these changes will be incorporated in new editions of the publication. IBM may make improvements and/or changes in the product(s) described in this publication at any time without notice.

Any references in this information to non-IBM Web sites are provided for convenience only and do not in any manner serve as an endorsement of those Web sites. The materials at those Web sites are not part of the materials for this IBM product and use of those Web sites is at your own risk.

IBM may use or distribute any of the information you supply in any way it believes appropriate without incurring any obligation to you.

For license inquiries regarding double-byte (DBCS) information, contact the IBM Intellectual Property Department in your country or send inquiries, in writing, to:

IBM World Trade Asia Corporation  
Licensing  
2-31 Roppongi 3-chome, Minato-ku  
Tokyo 106, Japan

Licensees of this program who wish to have information about it for the purpose of enabling: (i) the exchange of information between independently created programs and other programs (including this one) and (ii) the mutual use of the information which has been exchanged, should contact:

IBM Printing Systems Division  
Department H7FE Building 004M  
Information Development  
PO Box 1900  
Boulder CO 80301-9191 USA

Such information may be available, subject to appropriate terms and conditions, including in some cases, payment of a fee. The licensed program described in this document and all licensed material available for it are provided by IBM under terms of the IBM Customer Agreement, IBM International Program License Agreement or any equivalent agreement between us.

Any performance data contained herein was determined in a controlled environment. Therefore, the results obtained in other operating environments may vary significantly. Some measurements may have been made on development-level systems and there is no guarantee that these measurements will be the same on generally available systems. Furthermore, some measurement may have been estimated through extrapolation. Actual results may vary. Users of this document should verify the applicable data for their specific environment.

Information concerning non-IBM products was obtained from the suppliers of those products, their published announcements or other publicly available sources. IBM has not tested those products and cannot confirm the accuracy of performance, compatibility or any other claims related to non-IBM products. Questions on the capabilities of non-IBM products should be addressed to the suppliers of those products.

All statements regarding IBM's future direction or intent are subject to change or withdrawal without notice, and represent goals and objectives only.

This information is for planning purposes only. The information herein is subject to change before the products described become available.

If you are viewing this information softcopy, the photographs and color illustrations may not appear.

For online versions of this book, we authorize you to:

- Copy, modify, and print the documentation contained on the media, for use within your enterprise, provided you reproduce the copyright notice, all warning statements, and other required statements on each copy or partial copy.
- Transfer the original unaltered copy of the documentation when you transfer the related IBM product (which may be either machines you own, or programs, if the program's license terms permit a transfer). You must, at the same time, destroy all other copies of the documentation.

You are responsible for payment of any taxes, including personal property taxes, resulting from this authorization.

Your failure to comply with the terms above terminates this authorization. Upon termination, you must destroy your machine readable documentation.



---

## Trademarks

The following are trademarks or registered trademarks of International Business Machines Corporation:

Advanced Function Printing  
AFP  
AIX  
AS/400  
eNetwork  
IBM  
IBM Cross Platform Technologies for Windows  
Infoprint  
Intelligent Printer Data Stream  
IPDS  
Micro Channel  
MVS  
OS/2  
OS/390  
OS/400  
Print Services Facility  
S/390  
System/370

The following are trademarks of other companies:

- Java and all Java-based trademarks and logos are trademarks or registered trademarks of Sun Microsystems, Inc. in the United States, other countries, or both.
- Microsoft, MS-DOS, Windows, Windows NT, Windows 2000, Windows ME, Microsoft Visual Basic, Microsoft Visual C++, and the Windows logo are trademarks of Microsoft Corporation in the United States, other countries, or both.
- Pentium is a registered trademark of Intel Corporation in the United States, other countries, or both.
- UNIX is a registered trademark of The Open Group in the United States and other countries.

Other company, product, and service names may be trademarks or service marks of others.

---

## EuroReady

Infoprint Manager is capable of processing data containing the euro sign. Font character sets and code pages that contain and map the euro sign consistently with the application must be present either in a host library or in the printer. AFP fonts that support the euro sign are included in the AFP Font Collection (Program Number 5648-B33).



---

# Index

## A

- Adobe Acrobat Distiller
  - verifying PostScript fonts 28
- Adobe Acrobat Reader
  - preflighting files 25
- AFP Workbench Viewer
  - preflighting files 25

## D

- directories
  - setting up a RIP directory 27

## F

- files
  - creating for printing 21
  - in job ticket 24
  - viewing and preflighting 25
- fonts
  - converting True Type to PostScript 28
  - substitution 28
  - verifying PostScript fonts for printing 27

## I

- identifying job content 21
- Infoprint Submit
  - creating a job ticket 21
  - identifying job content 21
  - submitting jobs 25

## J

- job description
  - on job ticket 21
- job specifications
  - on job ticket 23
- job tickets
  - creating 21
  - describing job on 21
  - files in 24
  - overview 21
  - printing specifications on 23
  - variable data 24
- jobs
  - definition 21
  - identifying content 21
  - submitting
    - with Infoprint Submit 25
  - verifying PostScript fonts 27

## N

- notices 31

## P

- PC requirements
  - using Infoprint Submit for Windows 5
- PostScript
  - creating files 21
  - preflight for printing 27
  - verifying for printing 27
- PostScript fonts
  - converting True Type fonts to 28
  - missing from job 28
- preflighting files 25
- preflighting PostScript fonts 27
- printing
  - creating files for 21
- printing specifications
  - on job ticket 23

## R

- related publications 1
- RIP directory, setting up 27
- RIP files
  - saving 27

## S

- submitting jobs
  - with Infoprint Submit 25

## T

- True Type fonts
  - converting to PostScript fonts 28

## U

- using Adobe Acrobat Distiller 28
- using Infoprint Submit for Windows
  - PC requirements 5

## V

- variable data
  - in job tickets 24
- verifying PostScript fonts 27
- viewing files before printing 25



---

# Readers' Comments — We'd Like to Hear from You

Printing Systems Division  
Infoprint Manager for AIX Print-on-Demand Feature: Submit for Windows User's Guide  
Version 4 Release 1

Overall, how satisfied are you with the information in this book?

	Very Satisfied	Satisfied	Neutral	Dissatisfied	Very Dissatisfied
Overall satisfaction	<input type="checkbox"/>	<input type="checkbox"/>	<input type="checkbox"/>	<input type="checkbox"/>	<input type="checkbox"/>

How satisfied are you that the information in this book is:

	Very Satisfied	Satisfied	Neutral	Dissatisfied	Very Dissatisfied
Accurate	<input type="checkbox"/>	<input type="checkbox"/>	<input type="checkbox"/>	<input type="checkbox"/>	<input type="checkbox"/>
Complete	<input type="checkbox"/>	<input type="checkbox"/>	<input type="checkbox"/>	<input type="checkbox"/>	<input type="checkbox"/>
Easy to find	<input type="checkbox"/>	<input type="checkbox"/>	<input type="checkbox"/>	<input type="checkbox"/>	<input type="checkbox"/>
Easy to understand	<input type="checkbox"/>	<input type="checkbox"/>	<input type="checkbox"/>	<input type="checkbox"/>	<input type="checkbox"/>
Well organized	<input type="checkbox"/>	<input type="checkbox"/>	<input type="checkbox"/>	<input type="checkbox"/>	<input type="checkbox"/>
Applicable to your tasks	<input type="checkbox"/>	<input type="checkbox"/>	<input type="checkbox"/>	<input type="checkbox"/>	<input type="checkbox"/>

Please tell us how we can improve this book:

Thank you for your responses. May we contact you?  Yes  No

When you send comments to IBM, you grant IBM a nonexclusive right to use or distribute your comments in any way it believes appropriate without incurring any obligation to you.

---

Name

---

Address

---

Company or Organization

---

---

Phone No.

---



Fold and Tape

Please do not staple

Fold and Tape



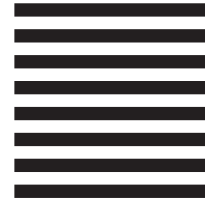
NO POSTAGE  
NECESSARY  
IF MAILED IN THE  
UNITED STATES

# BUSINESS REPLY MAIL

FIRST-CLASS MAIL PERMIT NO. 40 ARMONK, NEW YORK

POSTAGE WILL BE PAID BY ADDRESSEE

IBM Corporation  
Information Development  
IBM Printing Systems  
Department H7FE Building 004M  
Boulder, CO 80301-9817



Fold and Tape

Please do not staple

Fold and Tape





Program Number:

Printed in U.S.A.