

*A scalable software solution to manage and deliver information in a connected world.*



# IBM Infoprint Manager

---

## Highlights

---

**Provides secure scalable enterprise printing support**

**Provides reliability for mission critical applications such as SAP/R3**

**Manage and print to printers, fax machines, and more**

**Supports wide range of printers (up to 1000+ pages per minute)**

**Hardware, software and services available**

**Includes printing in your Tivoli system management solution**

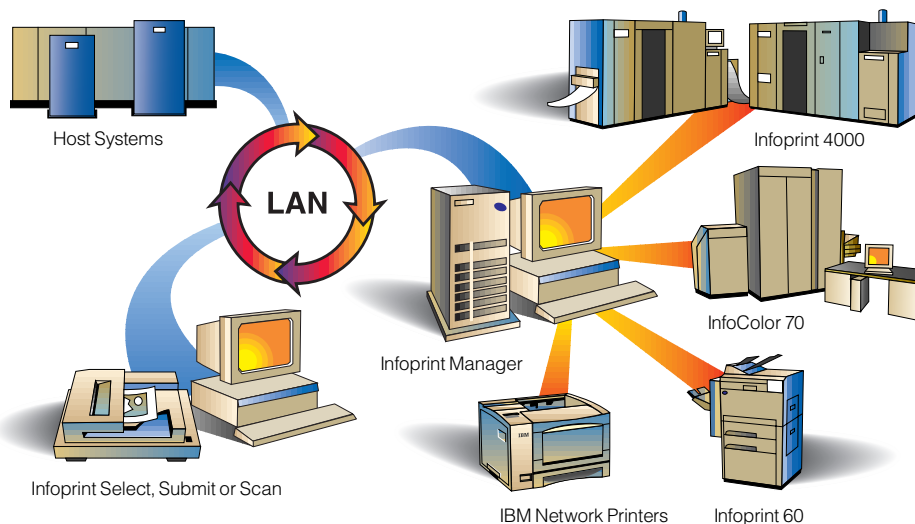
IBM® Infoprint® Manager is a comprehensive software solution for managing digital printing. It combines award-winning print management technology with enhanced file management and spooling capabilities to address the requirements of a variety of print markets. Using Infoprint Manager, you can submit diverse file types to a single system to be managed, printed, stored and reprinted, quickly and efficiently.

Combining superior print technology with built-in Advanced Function Presentation™ (AFP™) and Adobe® PostScript® support, Infoprint Manager delivers production-volume, single-copy integrity with PostScript quality. Infoprint Manager simplifies the print process and can help reduce your

operating expenses—whether you are printing books on a high speed printer or managing all the printing for your distributed enterprise. It offers a complete system that meets your diverse printing needs, now and in the future.

## High-performance enterprise printing

An enterprise print floor will appreciate the software's innovative enterprise print management technology designed to increase efficiency. This solution integrates IBM's Print Services Facility™ (PSF™) for AIX®, a rich set of print stream transforms, key components of the Printing Systems Manager (PSM) for AIX and the AFP Font Collection into a single, comprehensive print solution.



## *IBM's 24 x 7 customer service ensures reliable print operations around the clock.*

This system combines reliable queue and job management with comprehensive PSF print and job control. These facilities deliver the highest possible data integrity by ensuring documents are printed completely and accurately the first time. Whether printing traditional enterprise application output, AFP, PostScript or many of the popular image file formats, including GIF, JPEG or TIFF, the Infoprint Manager solution delivers reliable, easy-to-use print management.

Infoprint Manager offers enhanced PostScript functionality by providing a server-based, Adobe PostScript RIP.

Workgroup printing environments enjoy many features, such as Infoprint Manager's automated job scheduling, accounting and tracking. Users also benefit from efficiently printing multiple copies within their applications and submitting print jobs into the queue directly from the application, eliminating time-consuming steps in the process. Leveraging the

capabilities of a scaleable, server-based print management application, Infoprint Manager can help reduce printing costs by automating vital functions, simplifying user operation and facilitating electronic storage and reprinting.

### **Flexible commercial printing**

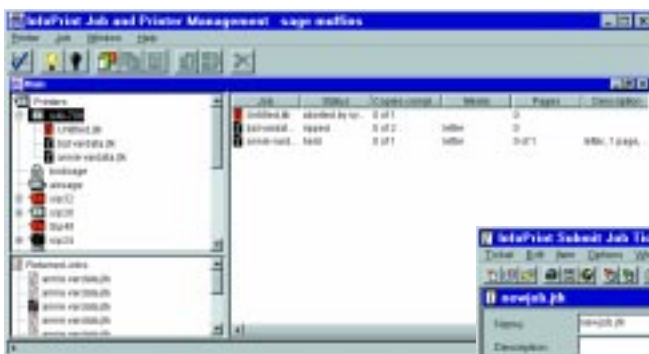
Infoprint Manager includes the tools needed for commercial printers to grow their businesses. Infoprint Manager helps manage an entire digital print shop from file submission to final print. Commercial printers also benefit from the use of Level 3 PostScript.

Infoprint Manager provides commercial printers with the single copy integrity needed to meet emerging short-run and variable-data printing needs, while allowing them to use existing processes and tools. The software's user-friendly, point-and-click user interface enables operators to manage printers and print files from a single server.

With the help of Infoprint Manager's comprehensive digital system, commercial printers can meet their customers' expectations for quick turnarounds while managing costs. For example, included with Infoprint Manager is a set of Windows® and Macintosh applications designed for receiving print files in commonly used formats. The applications allow scanning of hard copy documents and assembling, archiving or submitting jobs for just-in-time printing. The solution also enables users to preflight and view PostScript documents using the Adobe Acrobat viewer and the server-based Adobe Acrobat Distiller.

### **Comprehensive services**

IBM makes available on-site installation and education to help ensure that you will have an integrated system with a fully trained operating staff. In addition, IBM offers a full range of services from hardware maintenance to software support—all accessible 24 hours a day, 7 days a week.



*Infoprint Manager offers user-friendly print job management.*

## Value-added features

Infoprint Manager is rich in features that allow users to more effectively manage their printing environment. Centralized Output Management lets print managers configure, manage and monitor job output from a wide range of clients, from anywhere in the enterprise. Hard Copy Scanning leverages the value of existing documents by enabling users to scan, enhance, print and save scans as PDF files for distribution on the Web. Variable Data features allow users to create more effective personalized documents by customizing print jobs using database records.

Scaleable and secure, Infoprint Manager is Web-enabled, allowing users to print, store, retrieve, view and manage print jobs from any industry-standard Web browser. And Infoprint is SAP R/3- and Tivoli-compatible so that users can integrate their printing operations seamlessly with supply chain management and systems management efforts throughout the extended enterprise.

---

## IBM Infoprint Manager at a glance

---

### Features

Centralized Output Management	— Configure, manage and monitor from remote locations — Job Submission and Print Management Applications — Submit jobs from a range of platforms
Hard Copy Scanning	— Take advantage of the IBM Infoprint Scan integrated solution, which combines hardware and software in a single system
Variable Data	— Use current publishing applications: Quark or PageMaker

---

### Optional Features

Fax and E-mail	— Send and receive fax data from anywhere in the world — E-mail print or application documents to your customers quickly and easily
Scalability and Security	— Robust, network-wide security (using optional DCE)
SAP R/3	— Robust integration of SAP R/3 and Infoprint Manager
Infoprint ManagerPlus for Tivoli	— Control your Infoprint Manager system from the Tivoli Desktop
Information Storage and Retrieval	— Allows sharing of documents across users, organizations and locations
Adobe PostScript Extreme	— Users can simultaneously rip and print PostScript and PDF print files on their high-speed production printers
Infoprint Manager for the Web	— Use IBM InfoPrint Manager functions from a Web-based interface

---

### Other Software Options

- Kanji Fonts: Set of 5 Morasowa fonts and 2 Heisel fonts licensed to operate on one printer
  - PPF: Application for creating and editing Page Definitions and Form Definitions for use with AFP data streams
  - Infoprint Printer Attachment 1-45 ipm: License to operate one to 20 printers with a maximum letter-size print impression speed of 45
  - Infoprint Printer Attachment 46-100 ipm: License to operate one printer with a maximum letter-size print impression speed of 100
  - Infoprint Printer Attachment 101+ ipm: License to operate one printer with a maximum letter-size print impression speed over 100
- 

### Other Hardware Options

- IBM 4161 Multiple Printer Controller Model 001: Designed for an entry level print system
  - IBM 4161 Multiple Printer Controller Model 002: Designed for a continuous-feed print system
  - Choice of two scanners with simplex or duplex document feeder
  - Infoprint Printer Attachment 46-100 ipm: License to operate one printer with a maximum letter-size print impression speed of 100
  - Contact your IBM marketing representative for a hardware recommendation that is tuned specifically to the needs of your business
-

---

## IBM Infoprint Manager at a glance (con't)

---

### Hardware Requirements

Infoprint Manager	— IBM RS/6000 with AIX operating system 4.21 or 4.3 — Use of AIX windows required for graphical environment — TCP/IP printer connection (Token-Ring, Ethernet, FDDI)
Infoprint Select	— PC with OS/2®, Microsoft® Windows® 3.1, Windows 95/98® or Windows NT™ version 4.0 and TCP/IP LAN connection
Infoprint Submit	— PC with Windows 95/98, Windows NT version 4.0 and TCP/IP LAN connection or Macintosh PowerPC computer with System 7.61 and TCP/IP LAN connection
Infoprint Scan	— Personal computer with Microsoft Windows 95
Infoprint Library	— IBM RS/6000 with AIX operating system 4.21 or 4.3

---

### Printer Data Stream Support

IPDS, AFPDS, PostScript (Level 2 and 3), PDF, GIF, TIFF, JPEG and ASCII

---

### Fonts

Support for single and double byte fonts in AFP and PostScript Type 1, Type 3 and Multiple Master; Includes AFP Font Collection and Standard 11 Adobe PostScript font families

---

### Additional Information

The following publications are available for Infoprint Manager standard and optional features:

— Centralized Output Management	G544-5607
— Submitting Jobs and Managing Them	G544-5652
— Hard Copy Scanning	G544-5605
— Variable Data	G544-5657
— Fax and E-Mail	G544-5656
— Scalability and Security	G544-5655
— SAP R/3	G544-5653
— Information Storage and Retrieval	G544-5606
— Infoprint Manager for the Web	G544-5608
— Infoprint ManagerPlus for Tivoli	G544-5654

---

The following terms are trademarks of IBM Corporation in the United States and/or other countries: Advanced Function Presentation, AFP, AIX, IBM, InfoColor, Infoprint Print Services Facility, OS/2, PSF, RISC System/6000 and RS/6000.

Microsoft, Windows, and Windows NT are registered trademarks of Microsoft Corporation.

Adobe and PostScript are registered trademarks of Adobe Systems, Inc.

Other company, product and service names may be trademarks or service marks of others.



© International Business Machines Corporation 1999

IBM Printing Systems Company  
Dept. HT7/001H  
P.O. Box 1900  
Boulder, CO 80301-9191

Printed in the United States of America  
1-99  
All Rights Reserved

USA customers only  
References in this publication to IBM products  
or services do not imply that IBM intends to make  
them available outside the United States.

Visit our home page at  
[www.printers.ibm.com](http://www.printers.ibm.com)



G544-5439-05