

Cost-effective, enterprise-wide print management.



IBM Infoprint Manager for Windows NT and Windows 2000

Highlights

Manage and monitor from remote locations

Intelligent document routing and scheduling

Get notified when printing events occur

Balance printer workload

Share printers between host and LAN applications

Support a wide range of printers

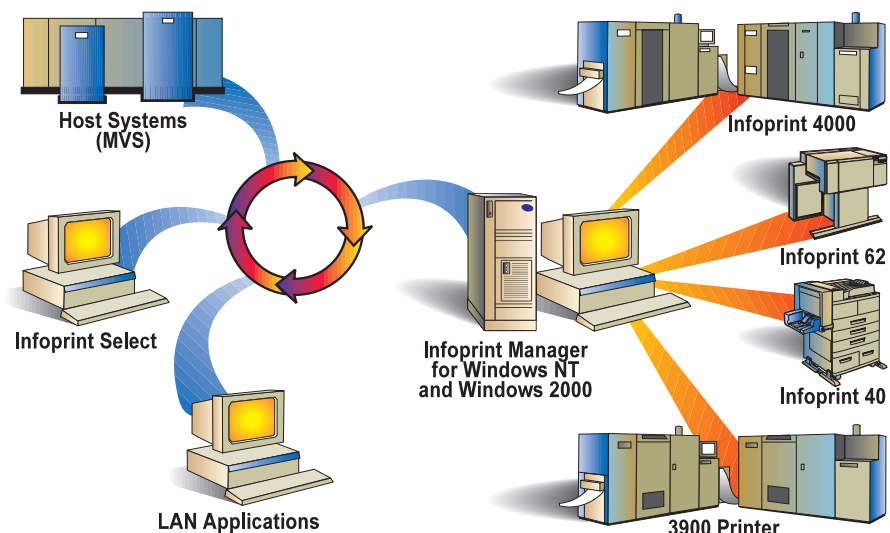
Today's emphasis on e-business calls for a reliable print management solution for your enterprise. IBM® Infoprint® Manager for Windows® NT® and Windows 2000 is that solution, providing the centralized output management needed by small, medium and large enterprises.

Consider the following two scenarios:

A print shop maintains a high-volume print business with three IBM Infoprint 4000 printers in continuous operation. Sometimes, lengthy jobs prevent the progress of shorter, more urgent jobs. IBM Infoprint Manager provides a robust set of tools for checking print queues,

promoting jobs, and for moving one or more jobs between queues. Prior to Infoprint Manager, when one printer was down for necessary maintenance, a job that was partially printed and the jobs queued on that printer were often delayed or even lost. With Infoprint Manager, any authorized operator can pause the partially printed job with a checkpoint so it can be resumed on another printer. The operator can also reschedule the queued jobs on other printers.

A large manufacturing company needs to support statement printing from S/390® applications while also meeting increased demand for high-speed



IBM Infoprint Manager for Windows NT and Windows 2000 enables cost-effective print management across your enterprise.

IBM's 24 x 7 customer service helps ensure reliable print operations around the clock.

invoice and check printing from a new ERP application. With Infoprint Manager for Windows NT, their print applications can be managed using a single high-speed AFP™ printer. Infoprint Manager provides host connectivity, printer sharing and host line-data printing capability, allowing the merging of ASCII text from invoice and check applications with Advanced Function Presentation™ overlays and signatures. This results in page-level print reliability for both AFP host and LAN applications.

An added benefit is that network and departmental printers can be managed by Infoprint Manager. With pooled printers, peak workloads can be handled and jobs can be automatically redirected to a new printer when there are hardware problems. Using the Infoprint Manager Operations GUI, the company's call center can now view printer and job status remotely and help solve printing problems more quickly.

Manage and monitor from anywhere

Infoprint Manager for Windows NT and Windows 2000 allows centralized management of printers and jobs through graphical user interfaces. You can remotely view, set or change the characteristics or defaults of both printers and jobs in your enterprise.

Jobs can be easily started, stopped, deleted and moved (reordered and resubmitted). Plus, you can monitor the status of printers and print jobs, and start, stop, forward space, back space or shut down printers—all from your desktop or from workstations in your network. Interoperability with current Infoprint Manager for AIX® servers and Infoprint Select clients is supported.

Intelligent document routing and scheduling

Infoprint Manager for Windows NT and Windows 2000 can intelligently route jobs based on print characteristics, with manual override capabilities. Jobs are scheduled only to destinations that

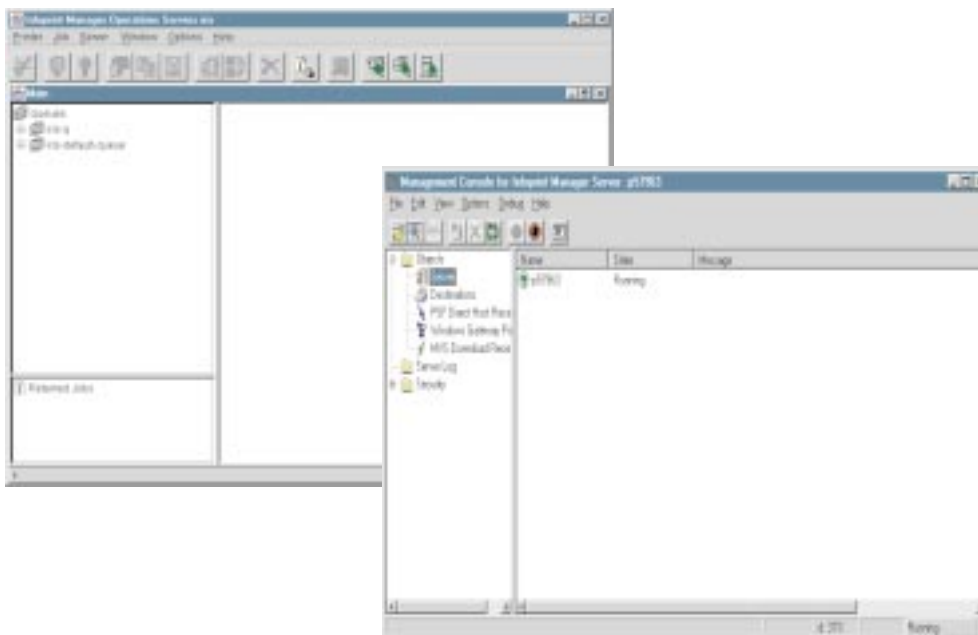
support their characteristics, such as duplexing or document formatting, which is determined automatically.

The operator can also define how each printer's jobs are scheduled based on size or assessed priority.

Jobs can be matched to destinations based on a rich set of routing characteristics, such as:

- job size (select short jobs for higher cost-per-page printers)
- data stream resolution (supports 240, 300, and 600 dpi)
- job group (batch)
- printer model or name
- type of media (legal, letter, etc.)

Control when jobs print by specifying a "retain until" time, a time by which the job must print or be automatically discarded, or a job group (batch). Matching the right job with the right printer maximizes productivity and minimizes the need for reprints.



Operator notification

Infoprint Manager for Windows 2000 and Windows NT allows for automatic event notification of printer status and problems through either a file, email or notification client windows. Each printer can be customized to notify specific personnel when certain events occur, such as low toner or paper jams. Operators can be notified with customized messages when a job is submitted, has started printing, and is complete.

Supports Internet Printing Protocol

Infoprint Manager for Windows NT and Windows 2000 allows mobile users to print to any supported printer anywhere in the world, via an Internet address (url). This enables remote job submission and makes your existing printers IPP-enabled.

Balance printer workload

With Infoprint Manager for Windows 2000 and Windows NT, you can:

- Configure your printing environment to balance workload and maximize utilization
- Pool (cluster) printers to maximize utilization
- Easily reroute jobs while replacing supplies or performing preventative maintenance
- Configure to hold jobs that fail and automatically disable printers with problems
- Transform data and print concurrently

- Save processed (RIPped) files for efficient reprinting or for printing multiple copies
- Configure to retry jobs automatically upon network failures
- Support multiple print data streams on the same printer

Receive jobs from multiple sources

Infoprint Manager for Windows enables you to receive jobs from multiple sources, including the Windows standard desktop and the IPP gateway. The solution also enables the printing of data from mainframe systems via MVS® Download and PSF™ Direct.

You can also share printers between host and LAN applications by routing data received over SNA links to TCP/IP-attached LAN printers. Using a single printer for both host and LAN applications better leverages your existing investments and maximizes productivity.

Support a wide range of printers

You can utilize existing hardware and customize transform sequences associated with actual destinations using Infoprint Manager. This solution provides support for multiple data stream transforms, including line data, AFPDS, PCL, PDF and Adobe® PostScript®. The solution also supports multiple output data streams, including IPDS™, Adobe PostScript, Hewlett-Packard Printer Control Languages and Page Printer Data Stream.

Scalability

Infoprint Select, a component of Infoprint Manager, enables users on the network to access a greater number of printers from their current applications. You can use Infoprint Select to send jobs from workstations on the LAN to printers controlled by Infoprint Manager for AIX or Infoprint Manager for Windows NT and Windows 2000. In addition, you can improve throughput and optimize resource use by distributing certain Infoprint Manager server tasks across different workstations. Different Infoprint Windows NT and AIX servers can process commands and receive job submission requests, manage and schedule jobs for printing, and drive printers.

For example, you can add additional Infoprint Manager for Windows NT servers that will drive printers fed from the original server that is supervising the work flow. Infoprint Manager provides centralized management by allowing you to manage and monitor all these servers.

To learn more about the distributed, interoperable Infoprint Manager print solution, contact your IBM Printing Systems representative or call the Printer Selection Center at (800) 358-6661, and select option 3.

IBM Infoprint Manager for Windows NT and Windows 2000 at a glance

Manage and monitor printers	View, set or change the characteristics of printers and jobs View, set or change defaults for both printers and jobs Monitor status of printers and jobs Start, stop, delete and move (reorder and resubmit) jobs Start, stop, forward space, back space or shut down printers Interoperate with current Infoprint Manager for AIX servers and Infoprint Select clients
Intelligent document routing/scheduling	Each printer can define how jobs should be scheduled, using the following: <ul style="list-style-type: none">• jobs with the earliest print deadline first• jobs in the order they were submitted• jobs in the order of assessed priority• jobs in order of size, longest first• jobs in order of size, shortest first Rich set of routing characteristics that match jobs to destinations <ul style="list-style-type: none">• job size (select short jobs for higher cost-per-page printers)• data stream resolution (240, 300 and 600 dpi supported)• job group (batch)• printer model or name• particular media (legal, letter, etc.) Control when jobs print by specifying: <ul style="list-style-type: none">• a "retain until" time• a time by which the job must print or be automatically discarded• a job group (batch) Route jobs only to destinations that support their characteristics <ul style="list-style-type: none">• duplex or document format (Adobe, PostScript, PCL)
Operator notification	Automatic event notification of printer status and problems via e-mail, notification client windows or a file Printers can be customized to route messages to specific personnel
Balance printer workload	Pool (cluster) printers to maximize utilization Re-route jobs while changing supplies or performing preventative maintenance Prevent loss of jobs by configuring to hold jobs that fail or automatically disabling printers with problems Transform data and print concurrently Save processed files for efficient reprinting or printing multiple copies Configure to retry jobs automatically upon network failures Support multiple print data streams on the same printer
Receive jobs from multiple sources	Native Microsoft Windows NT gateway—Windows NT/95/98/2000 standard desktop IPP gateway MVS Download and PSF Direct for printing data from mainframe systems lpr/lpd Infoprint Select client
Share printers between applications	Route data over SNA links to TCP/IP-attached LAN printers Use a single printer for both host and LAN applications
Support a wide range of printers	Utilize existing hardware Customize transform sequences associated with actual destinations Support for multiple data stream transforms, including: <ul style="list-style-type: none">• formatted line data• unformatted line data• AFPDS• PCL• PDF• Adobe PostScript RIP: Level 3 transform¹ Support for multiple output data streams, including <ul style="list-style-type: none">• IPDS• PPDS (Page Printer Data Stream)• PostScript• Hewlett-Packard PCL4, PCL5, PCL5c
Prerequisites	Infoprint Manager Workstation with 450 MHz Pentium processor, 128MB RAM, 10 GB hard disk and graphics display Microsoft Windows 2000 (Professional, Server or Terminal Server) or Microsoft Windows NT Version 4.0 (Workstation, Server or Terminal Server) at Service Pack level 4 or higher TCP/IP printer connection (Token-Ring, Ethernet, FDDI) Microsoft Internet Explorer [®] 4.01 with Service Pack level 2 or higher

¹Supported under Windows NT environments only. IBM intends to provide this functionality on the Windows 2000 platform at a later date.

The following terms are trademarks of IBM Corporation in the United States and/or other countries: Advanced Function Presentation, AFP, AIX, IBM, Infoprint, IPDS, MVS, PSF and S/390.

Microsoft, Windows, Windows NT and Internet Explorer are registered trademarks of Microsoft Corporation.

Adobe and PostScript are registered trademarks of Adobe Systems, Incorporated.

Other company, product and service names may be trademarks or service marks of others.



© International Business Machines Corporation 2000

IBM Printing Systems
Dept. HT7/001H
P.O. Box 1900
Boulder, CO 80301-9191

Printed in North America

1-00

All Rights Reserved

References in this publication to IBM products or services do not imply that IBM intends to make them available outside North America.

Visit our home page at

www.ibm.com/printers

G563-0122-00