

Printing Systems Division



Infoprint DBCS Font Downloader User's Guide

Printing Systems Division



Infoprint DBCS Font Downloader User's Guide

Note!

Before using this information and the product it supports, read the information in "Notices" on page 49.

Fourth Edition (November 2002)

This publication applies to Infoprint Manager for AIX Version 4 Release 1, program number 5765-F68; to Infoprint Manager for the Windows Operating System Version 2 Release 1, program number 5639-N49; to Infoprint Server for OS/400 Version 5 Release 2, program number 5722-IP1; and to all subsequent releases and modifications until otherwise indicated in new editions or technical newsletters. Be sure to use the correct edition for the level of the product.

Requests for IBM publications should be made to your IBM representative or to the IBM branch office serving your locality. If you request publications from the address given below, your order will be delayed because publications are not stocked there. Many of the IBM Printing Systems Division publications are available from the web page listed below.

Internet

Visit our home page at: <http://www.ibm.com/printers>

A Reader's Comments form is provided at the back of this publication. If the form has been removed, you can send comments by fax to 1-800-524-1519 (USA only) or 1-303-924-6873; by E-mail to printpub@us.ibm.com; or by mail to:

IBM Printing Systems Division
Department H7FE Building 004M
Information Development
PO Box 1900
Boulder CO 80301-9191 USA

IBM may use or distribute whatever information you supply in any way it believes appropriate without incurring any obligation to you.

© Copyright International Business Machines Corporation 2001, 2002. All rights reserved.

US Government Users Restricted Rights – Use, duplication or disclosure restricted by GSA ADP Schedule Contract with IBM Corp.

Summary of Changes

The following additions and changes were made to the fourth edition of this book:

- Infoprint® Server for OS/400® now supports the Infoprint DBCS Font Downloader.
- Instructions for installing and uninstalling the Infoprint DBCS Font Downloader have been added.
- Instructions for initial configuration and configuration after installation have been rewritten as separate procedures.

Contents

Summary of Changes	iii
Figures	vii
Chapter 1. Introduction	1
Who should read this publication	1
Most recent information	1
The Infoprint publication library.	1
Infoprint Manager for AIX publication library	1
Infoprint Manager for Windows publication library	2
Chapter 2. General Information.	5
Chapter 3. Installing the Infoprint DBCS Font Downloader	7
On Windows NT	7
On Windows 2000	15
Chapter 4. Configuring the Infoprint DBCS Font Downloader	25
Initial configuration	25
Changing the configuration	28
Chapter 5. Infoprint PostScript utilities	31
Chapter 6. Starting and stopping the Infoprint DBCS Font Downloader	33
Chapter 7. Downloading double-byte fonts from the Macintosh to Infoprint	35
Chapter 8. Error handling.	37
Chapter 9. Uninstalling the Infoprint DBCS Font Downloader	39
Uninstalling the Font Downloader.	39
Uninstalling the Miramar AppleTalk protocol from Windows NT	40
Uninstalling the Miramar AppleTalk protocol from Windows 2000	44
Notices	49
Trademarks	51
EuroReady	51
Index	53

Figures

1.	Initial installation panel	7
2.	License agreement panel	8
3.	Customer information panel	9
4.	Choose destination location panel	10
5.	Preparing to install Miramar AppleTalk protocol... message	10
6.	Miramar AppleTalk installation instructions...	11
7.	Protocols tab before installing AppleTalk	12
8.	Select network protocol dialog	13
9.	Select network adapter dialog	13
10.	Protocols tab after installing AppleTalk	14
11.	Network settings change dialog	15
12.	Initial installation panel	15
13.	License agreement panel	16
14.	Customer information panel	17
15.	Choose destination location panel	18
16.	Preparing to install Miramar AppleTalk protocol... message	18
17.	Miramar AppleTalk installation instructions...	19
18.	Network and dial-up connections dialog	19
19.	Status dialog	20
20.	Properties dialog before installing AppleTalk	21
21.	Select network component type dialog	22
22.	Select network protocol dialog	23
23.	Properties dialog after installing AppleTalk	24
24.	Setup dialog	25
25.	Starting service... message.	26
26.	Macintosh Chooser dialog	27
27.	Settings tab	28
28.	Infoprint Manager PS utilities tab	31
29.	Settings tab	33
30.	Services dialog	34
31.	Settings tab	35
32.	Infoprint Manager PS utilities tab	36
33.	Settings tab	38
34.	Initial uninstallation message	39
35.	Confirm file deletion dialog	39
36.	Maintenance complete panel	40
37.	Protocols tab before removing AppleTalk.	41
38.	Warning dialog	42
39.	Protocols tab after removing AppleTalk	43
40.	Network settings change dialog	44
41.	Network and dial-up connections dialog	44
42.	Status dialog	45
43.	Properties dialog before removing AppleTalk	46
44.	Uninstall confirmation dialog	46
45.	Properties dialog after removing AppleTalk	47

Chapter 1. Introduction

This publication explains how to configure and use the Infoprint Double-Byte Character Set (DBCS) Font Downloader.

Who should read this publication

This book is for anyone who uses double-byte PostScript fonts on a Macintosh operating system and who needs to download those fonts to Infoprint Manager.

Most recent information

This document is available on the World Wide Web at <http://www.ibm.com/printers>. On the Printing Systems homepage, click Infoprint Manager under **Resources For**, then click Infoprint Manager for AIX® on the Infoprint Manager Family homepage. Select **Product Library** from the drop-down list in the right hand navigation bar, then click the link for **Planning Guide** under **Publications** to download the PDF version of this book.

IBM® will update the web version of this document regularly. Consult <http://www.ibm.com/printers> for the latest information on Infoprint Manager and other products from IBM Printing Systems.

The Infoprint publication library

For the most current information, please go to the IBM Printing Systems website at <http://www.ibm.com/printers>.

Infoprint Manager for AIX publication library

Infoprint Manager for AIX provides publications in PDF format on a CD-ROM supplied with the product. You can download PDF versions of these publications or order printed copies of these publications from IBM at the following website:

<http://www.elink.ibm.com/public/applications/publications/cgibin/pbi.cgi?CTY=US>

Notes:

1. There is a fee for the printed manuals.
2. You can use the form number specified for a publication to download a PDF version or order a printed version.

Here is the list of publications for Infoprint Manager for AIX:

- *IBM Infoprint Manager for AIX: Introduction and Planning Guide*, G544-5833. This publication gives an overview of Infoprint Manager for AIX, introduces its concepts, and helps you prepare to use it. It addresses migration from previous versions of the product. Finally, this publication explains the differences between the AIX and Windows versions of Infoprint.
- *IBM Infoprint Manager for AIX: Getting Started*, G544-5817. This publication helps you install and configure IBM Infoprint Manager for AIX. It focuses primarily on server and client system software configuration.

- *Guidelines for Installing Infoprint Manager for AIX 4.1 in an HACMP Configuration*, G544-5818. This publication helps you install and configure HACMP with IBM Infoprint Manager for AIX. It also tells you how to use HACMP with IBM Infoprint Manager for AIX.
- *IBM Infoprint Manager for AIX: Procedures*, G544-5815. This publication describes the primary tasks necessary for setting up an Infoprint environment, submitting print jobs, scheduling jobs, and managing the print environment. This publication contains all the IBM Infoprint Manager for AIX procedures that are available as topics on the web in book format, including an index and table of contents for ease of retrievability.
- *IBM Infoprint Manager: Reference*, S544-5475. For print administrators, operators, and application programmers with the need to perform command-line functions, this publication describes the commands, utilities, transforms, attributes, and attribute values associated with Infoprint.
- *PSF Direct Network Configuration Guide for System/370*, S544-5486. For system administrators or network specialists responsible for configuring a system for Print Services Facility (PSF) Direct. PSF Direct is a function of IBM Infoprint Manager for AIX that allows a PSF program (PSF/390, PSF/400, PSF/MVS, PSF/VM, or PSF/VSE) to print remotely, using the SNA LU 6.2 protocol, on printers supported by Infoprint. The PSF program sends the print data stream directly to the Infoprint printer.
- *IBM PSF for AIX: AFP Upload Configuration Guide Using SNA Server/6000*, S544-5422. For system administrators, this publication describes how to configure AFP Upload on both AIX (client) and MVS (server) to send files to the JES spool on the MVS server, using a SNA LU 6.2 protocol.
- *IBM PSF for AIX: AFP Upload Configuration Guide Using TCP/IP*, S544-5423. For system administrators, this publication describes how to configure AFP Upload on both AIX (client) and MVS (server) to send files to the JES spool on the MVS server, using a TCP/IP protocol.

For information on the use of SAP R/3 with Infoprint Manager for AIX, visit the Product Library page for Infoprint Manager for AIX at:

<http://www.printers.ibm.com/R5PSC.NSF/Web/ipmrefinfo41>.

Infoprint Manager for Windows publication library

Infoprint Manager for Windows provides publications in PDF format on a CD-ROM supplied with the product. You can download PDF versions of these publications or order printed copies of these publications from IBM at the following website:

<http://www.elink.ibm.com/public/applications/publications/cgibin/pbi.cgi?CTY=US>

Notes:

1. There is a fee for the printed manuals.
2. You can use the form number specified for a publication to download a PDF version or order a printed version.

Here is the list of publications for Infoprint Manager for Windows NT and Windows 2000:

- *IBM Infoprint Manager for Windows: Introduction and Planning Guide*, G544-5716. This publication gives an overview of Infoprint Manager for Windows, introduces its concepts, and helps you prepare to use it. It describes features of this product and compares its functions to those of IBM Print Services Facility

for OS/2 (PSF for OS/2). It addresses migration from PSF for OS/2 at a high level. Finally, this publication explains the differences between the AIX and Windows versions of Infoprint.

- *IBM Infoprint Manager for Windows: Getting Started*, G544-5717. This publication helps you install and configure Infoprint Manager for Windows. It focuses primarily on server and client system software configuration, but it also includes information for the IBM 4159 Model 001 S/390 Parallel Channel Emulator Card.
- *IBM Infoprint Manager for Windows: Procedures*, G544-5814. This publication contains all the Infoprint Manager for Windows procedures that are available as topics on the web in book format, including an index and table of contents for ease of retrievability.
- *IBM Infoprint Manager: Reference*, S544-5475. For print administrators, operators, and application programmers with the need to perform command-line functions, this publication describes the commands, utilities, transforms, attributes, and attribute values associated with Infoprint.

| For information on the use of either PSF Direct or SAP R/3 with Infoprint
| Manager for Windows NT and Windows 2000, visit the Product Library page for
| Infoprint Manager for Windows NT and Windows 2000 at
| <http://www.printers.ibm.com/R5PSC.NSF/Web/ipmntref21>.

Chapter 2. General Information

The IBM Infoprint Double-Byte Character Set (DBCS) Font Downloader enables users of double-byte PostScript fonts on the Macintosh to download those fonts to any of these programs:

- Infoprint Manager for AIX Version 4 Release 1
- Infoprint Manager for the Windows[®] Operating System (Infoprint Manager for Windows) Version 2 Release 1
- Infoprint Server for OS/400 Version 5 Release 2

The Infoprint DBCS Font Downloader runs under Microsoft[®] Windows NT[®] or Windows 2000 and uses AppleTalk to connect to the Macintosh. Because the Infoprint DBCS Font Downloader appears on the AppleTalk network as a LaserWriter printer, it can receive fonts from Macintosh font downloader utilities. It transmits those fonts to any Infoprint server in the TCP/IP network.

The Infoprint DBCS Font Downloader requires the following hardware and software:

- A workstation with:
 - Windows NT 4 Workstation Service Pack 6 or later, or Windows 2000 Professional
 - An Ethernet network adapter
 - 64MB RAM
 - 25MB free hard disk space
- A Macintosh with:
 - The version of Mac OS required by the fonts you want to use
 - An EtherTalk connection to the same TCP/IP network as the workstation
- An Infoprint Manager for AIX, Infoprint Manager for Windows, or Infoprint Server for OS/400 server on a system with:
 - A TCP/IP connection to the same network as the workstation and Macintosh
 - Enough free disk space to store the downloaded fonts

Chapter 3. Installing the Infoprint DBCS Font Downloader

You must install the Infoprint DBCS Font Downloader on the Windows workstation. The process is slightly different for Windows NT and Windows 2000. You do not have to install any software on the Infoprint server system or on the Macintosh.

On Windows NT

To install the Infoprint DBCS Font Downloader on Windows NT:

1. Insert the product CD-ROM in the drive. The installation program starts automatically.

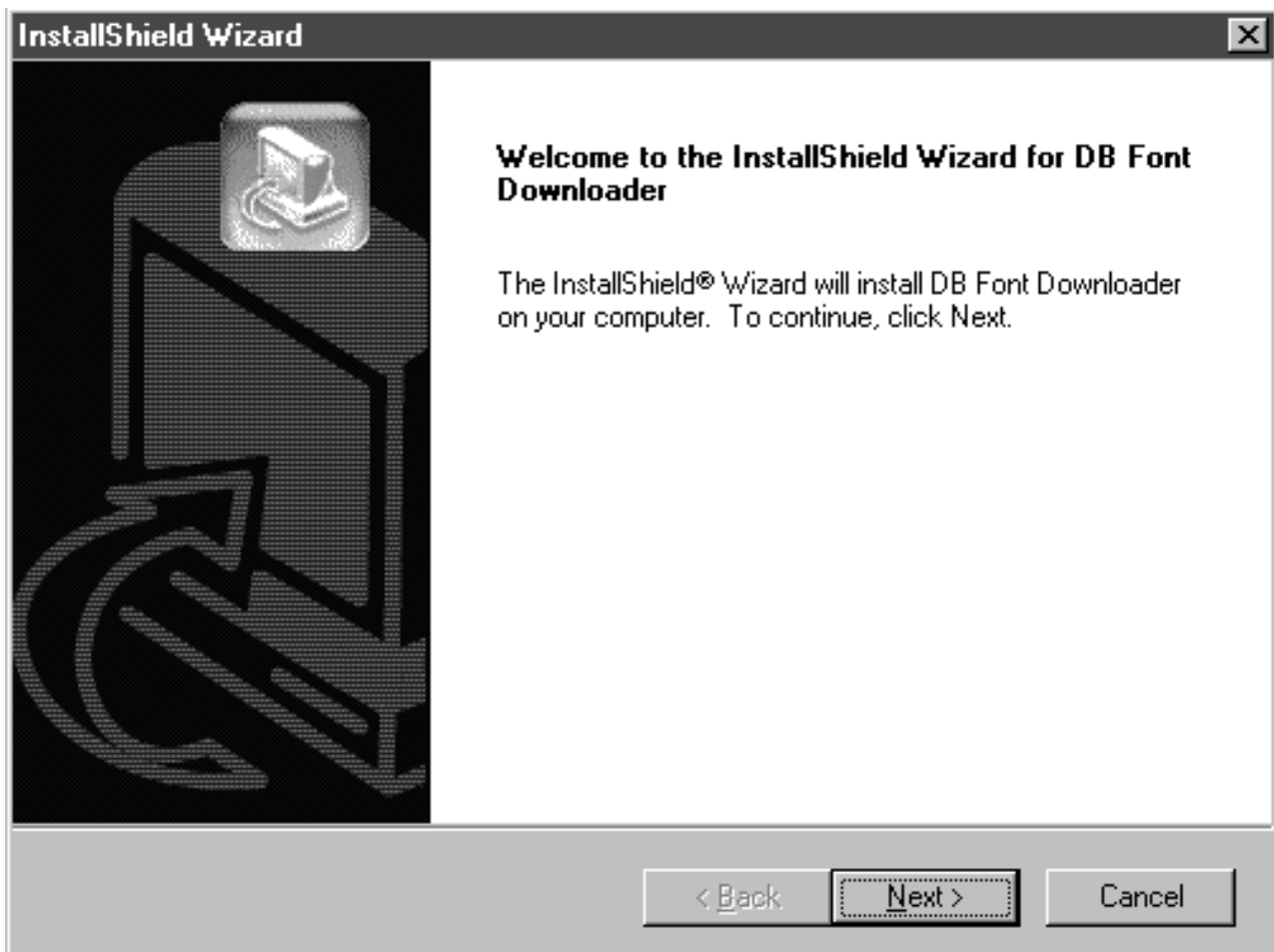


Figure 1. Initial installation panel

2. On the initial installation panel (Figure 1), click the **Next** button.

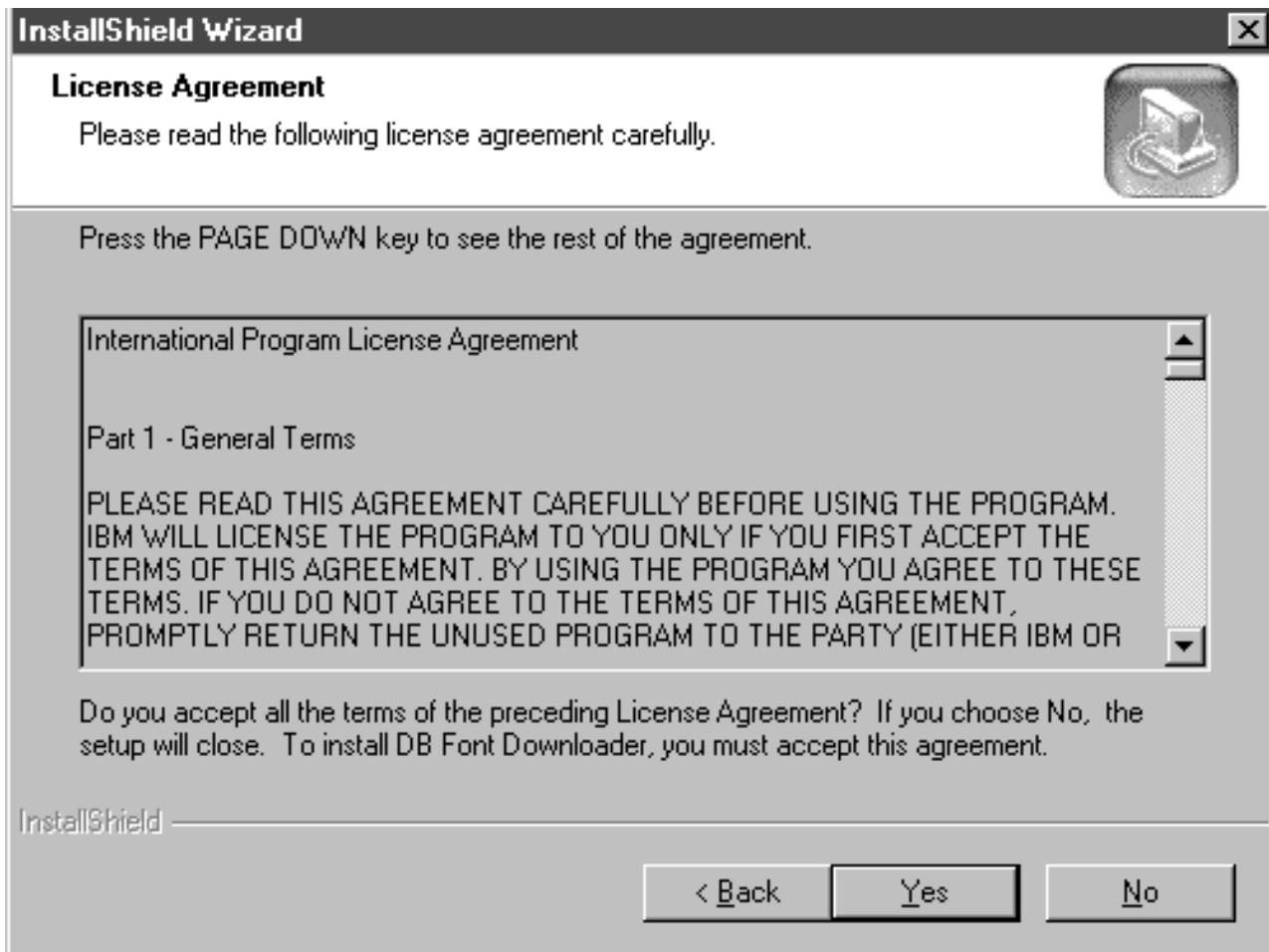


Figure 2. License agreement panel

3. Read the license agreement (Figure 2) and click the **Yes** button.



Figure 3. Customer information panel

4. Enter your name and the name of your company, then click the **Next** button.

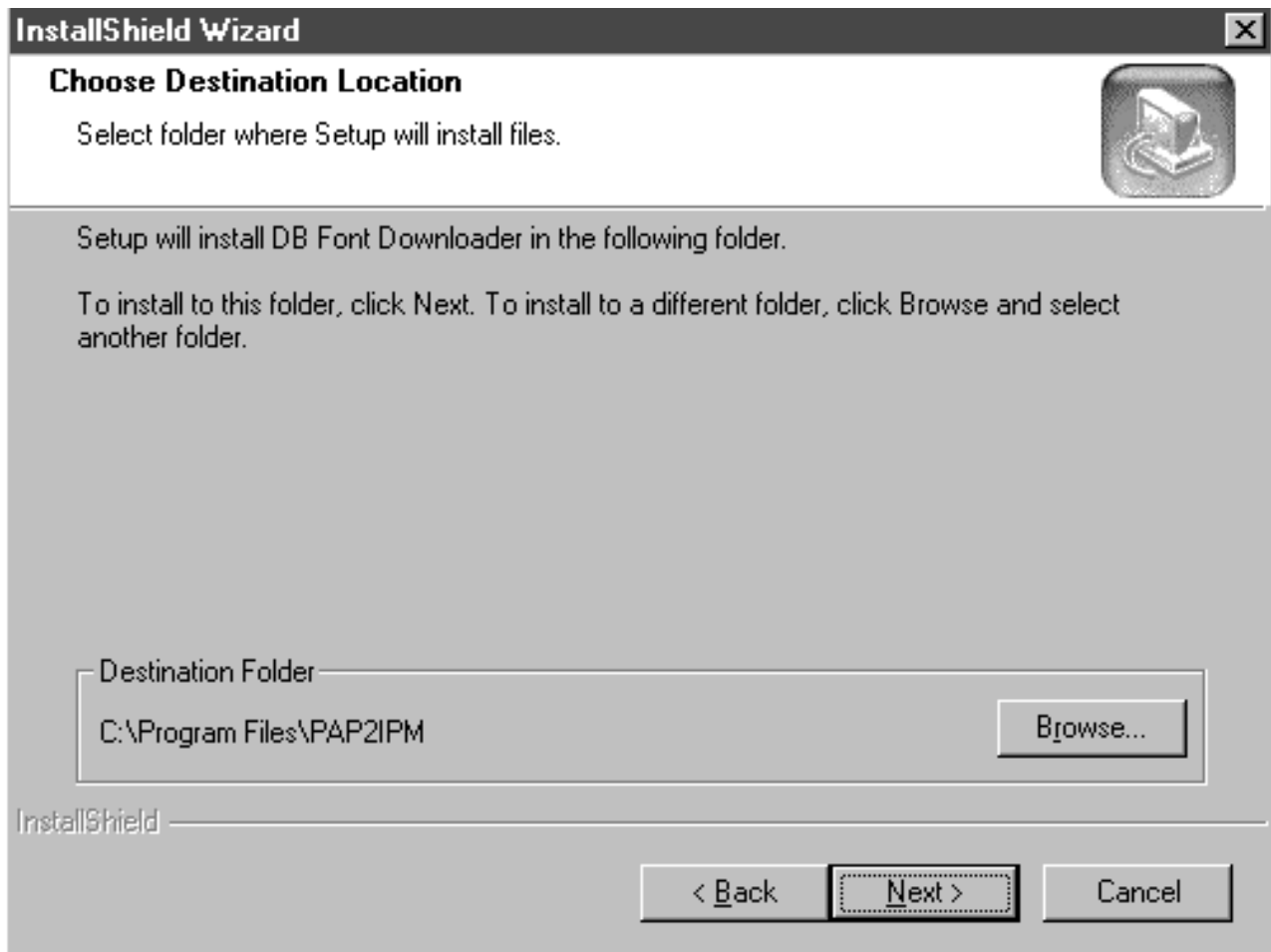


Figure 4. Choose destination location panel

5. By default, the Infoprint DBCS Font Downloader is installed in C:\Program Files\PAP2IPM. You can click the **Browse** button to select a different folder. Click the **Next** button to continue.

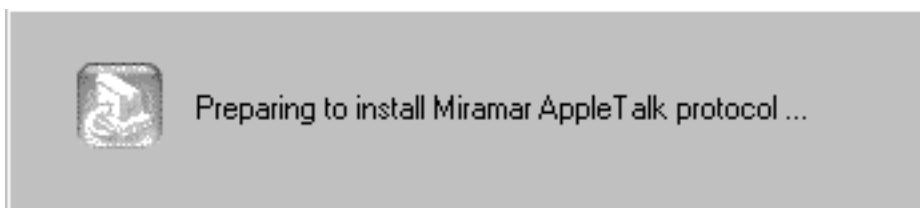


Figure 5. Preparing to install Miramar AppleTalk protocol... message

6. You must now install the Miramar AppleTalk protocol so that your Windows system can communicate with the Macintosh. The installer displays a message box containing installation instructions (Figure 6 on page 11).



Figure 6. Miramar AppleTalk installation instructions...

Read the instructions and click the **OK** button. To carry out the instructions, continue with this procedure.

7. The installer displays the **Network** dialog. Select the **Protocols** tab (Figure 7 on page 12).

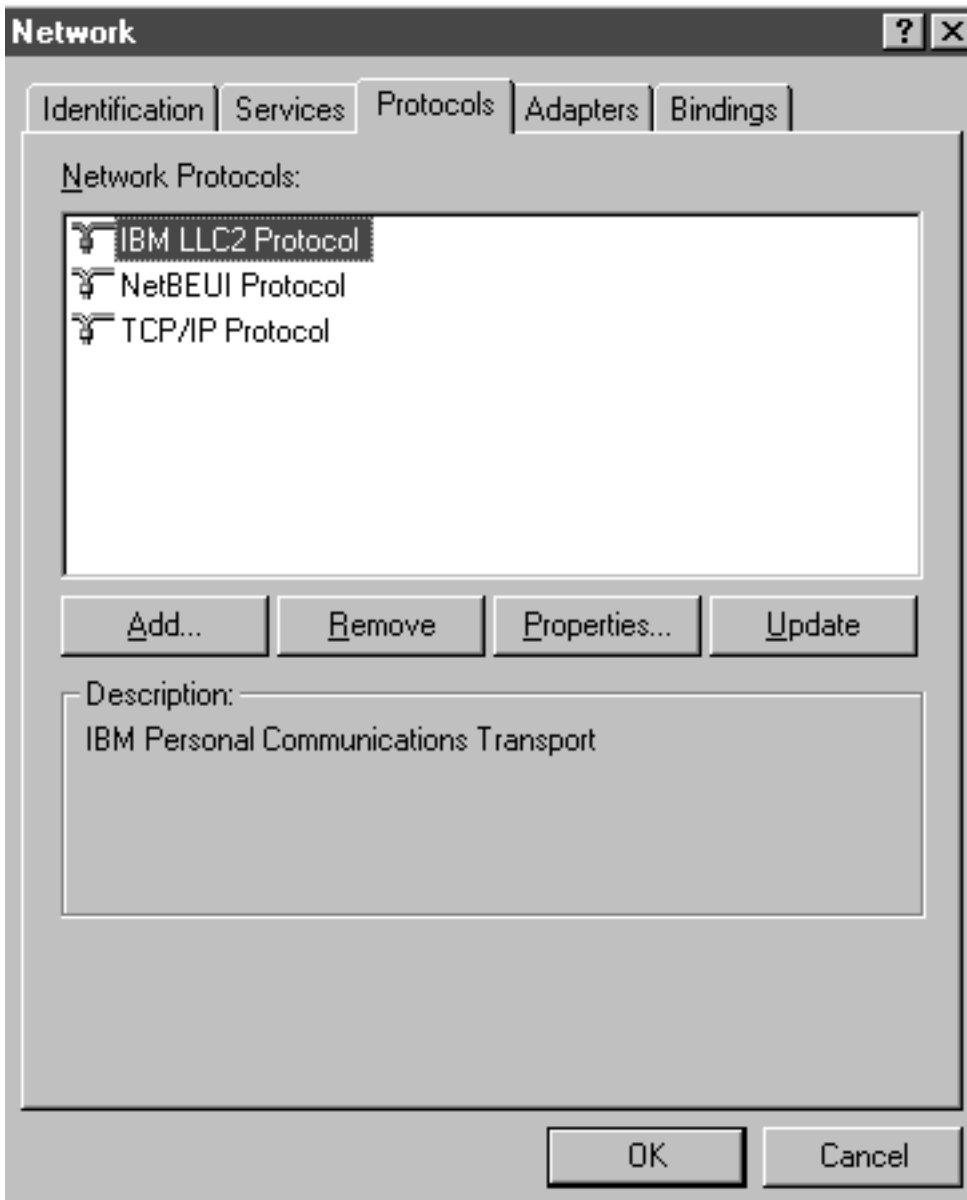


Figure 7. Protocols tab before installing AppleTalk

8. Click the **Add** button.

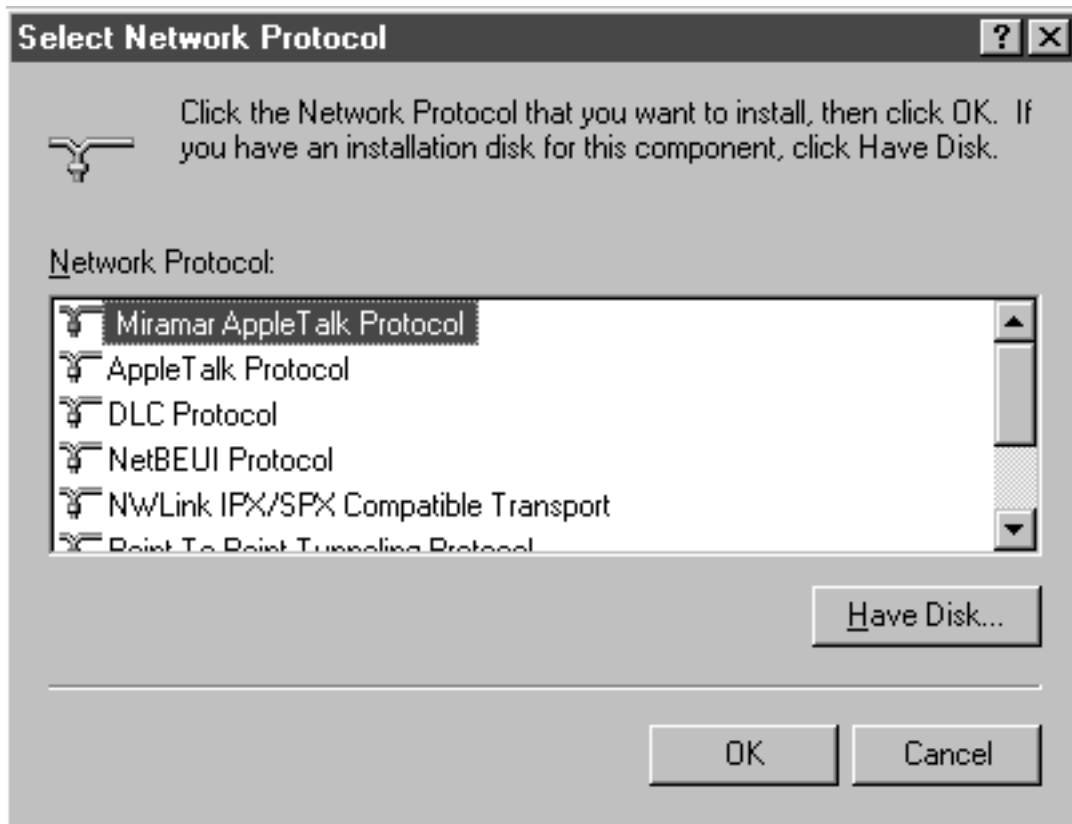


Figure 8. Select network protocol dialog

9. In the **Network protocol** field of the **Select network protocol** dialog (Figure 8), select **Miramar AppleTalk protocol**, then click the **OK** button.

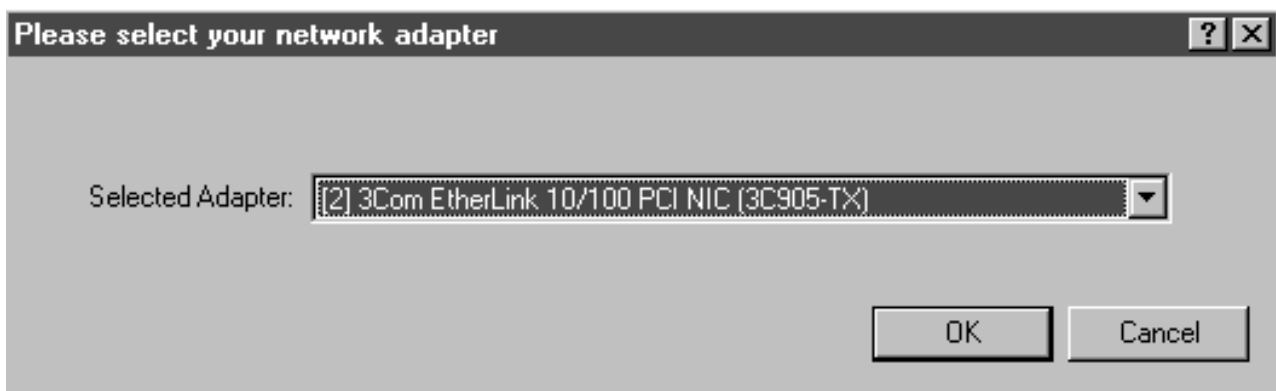


Figure 9. Select network adapter dialog

10. If the workstation has more than one network adapter, you are prompted to select one (Figure 9). Select the adapter that supports Ethernet.

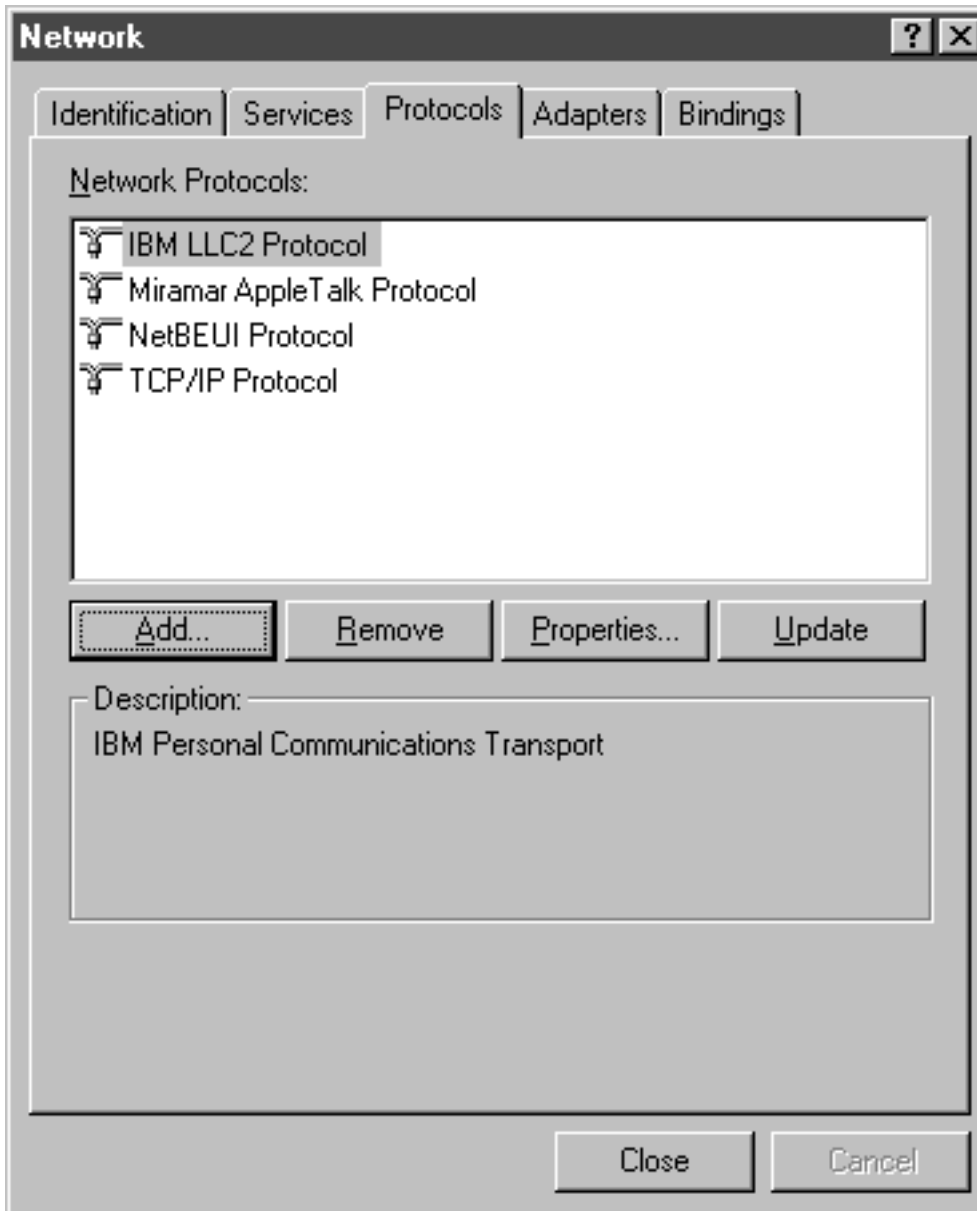


Figure 10. Protocols tab after installing AppleTalk

11. When the **Network** dialog reappears (Figure 10), Miramar AppleTalk has been added to the list of supported protocols. Click the **Close** button.

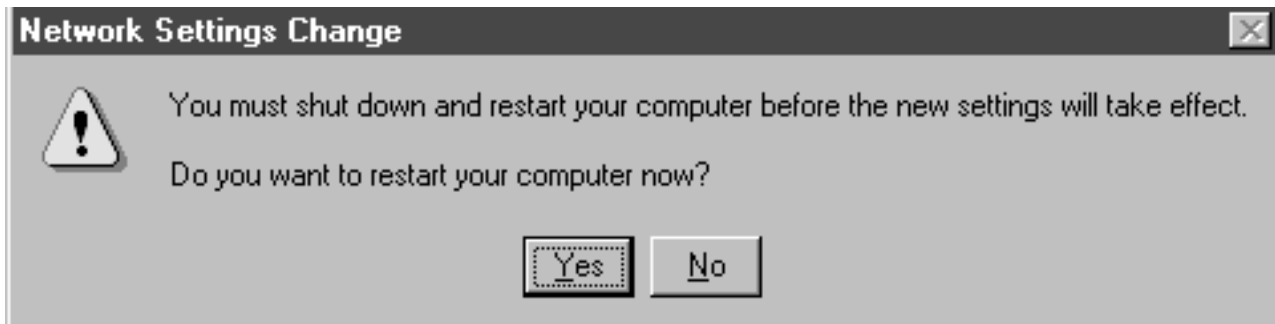


Figure 11. Network settings change dialog

12. Click the **Yes** button to shut down and restart the computer.
13. Continue with "Initial configuration" on page 25.

On Windows 2000

To install the Infoprint DBCS Font Downloader on Windows 2000:

1. Insert the product CD-ROM in the drive. The installation program starts automatically.

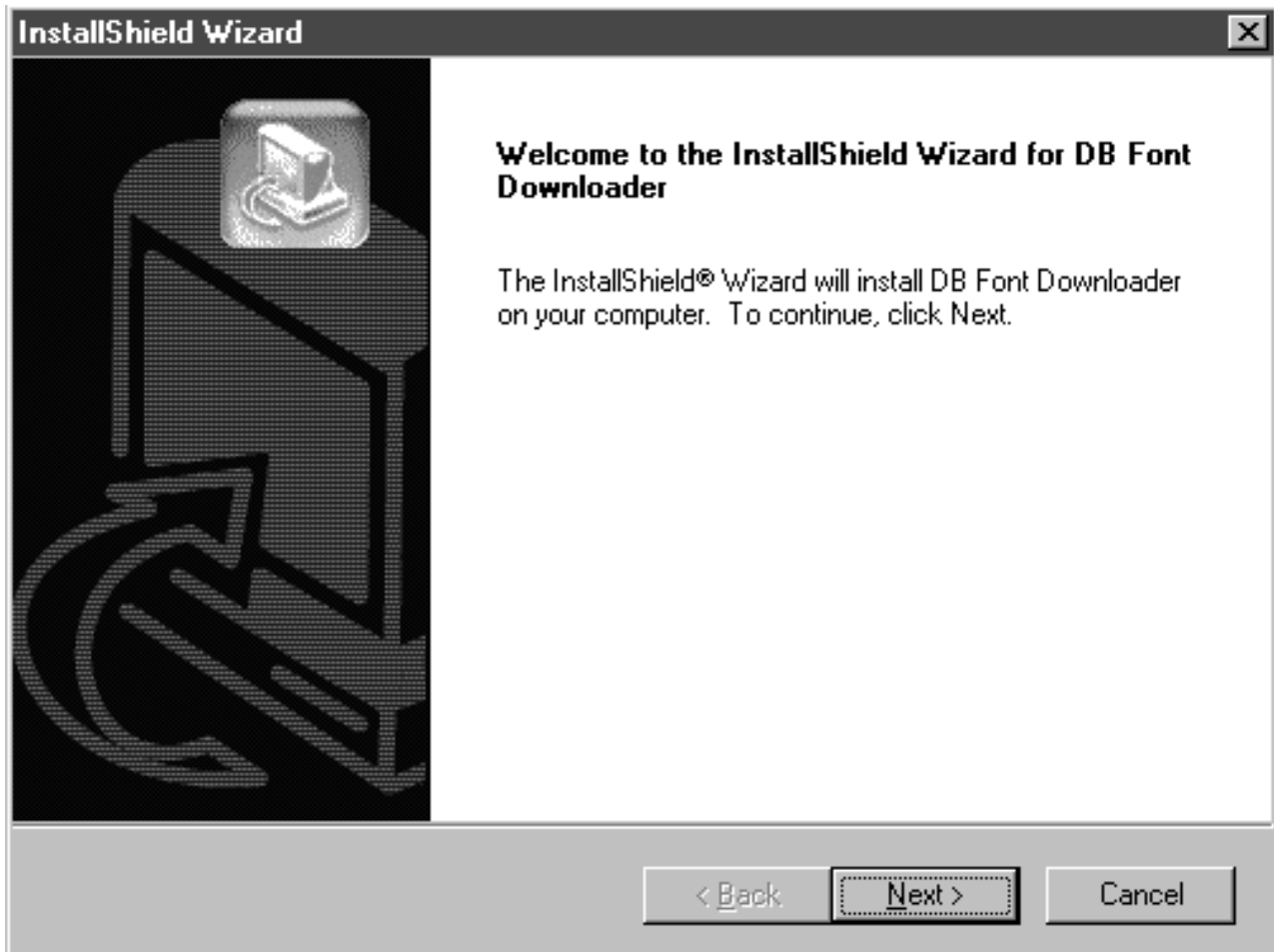


Figure 12. Initial installation panel

2. On the initial installation panel (Figure 12 on page 15), click the **Next** button.

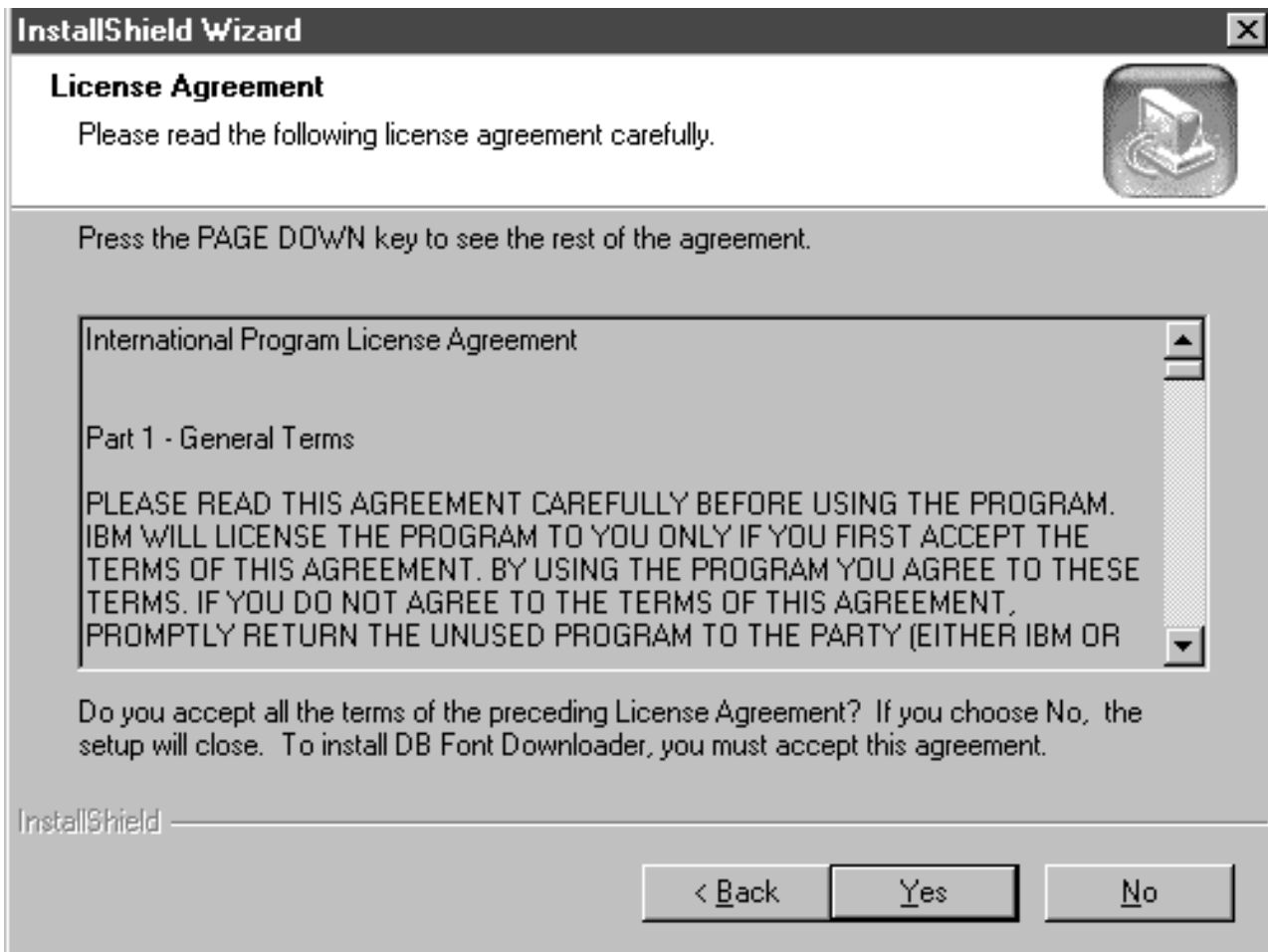


Figure 13. License agreement panel

3. Read the License Agreement (Figure 13) and click the **Yes** button.

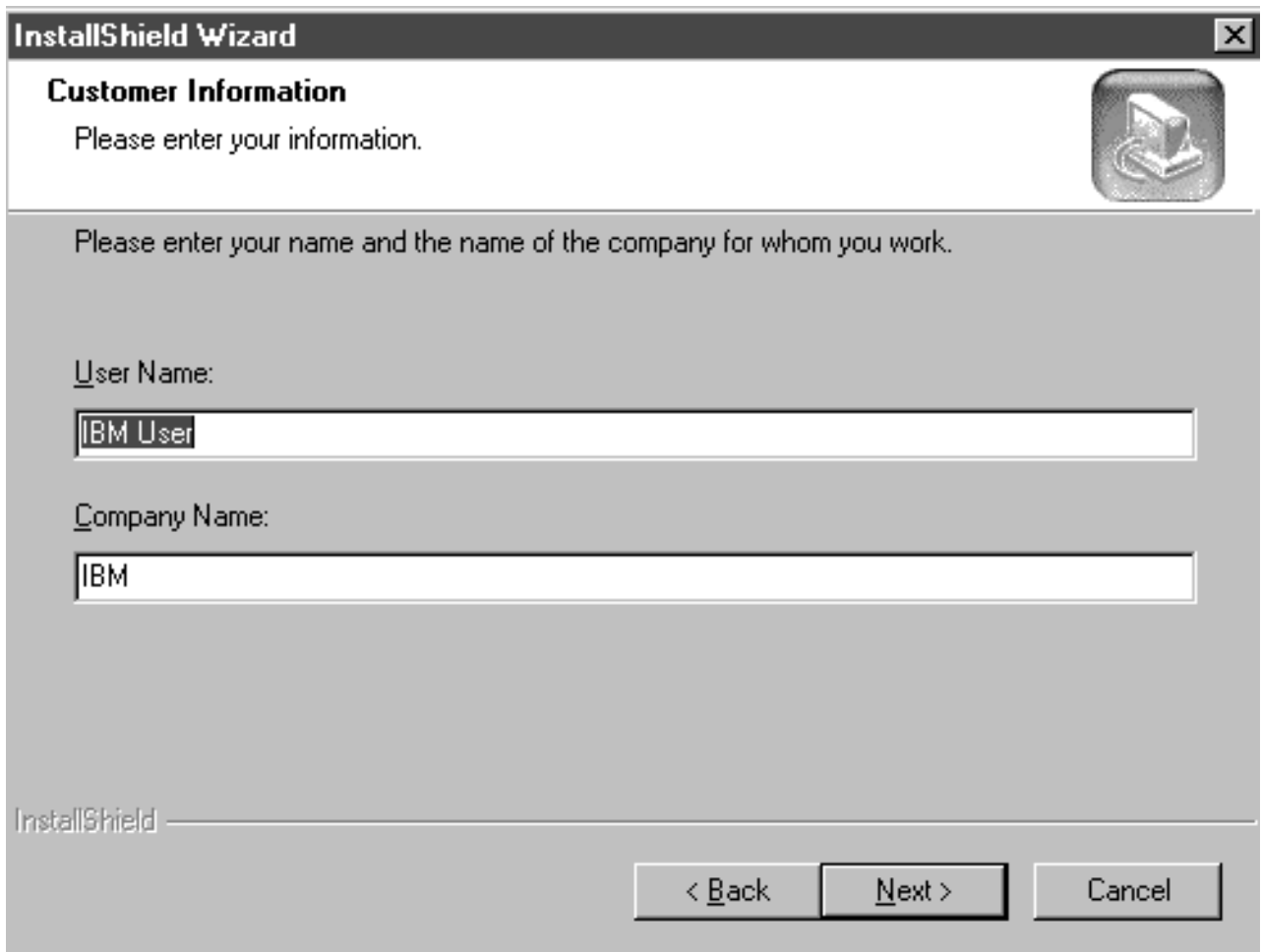


Figure 14. Customer information panel

4. Enter your name and the name of your company, then click the **Next** button.

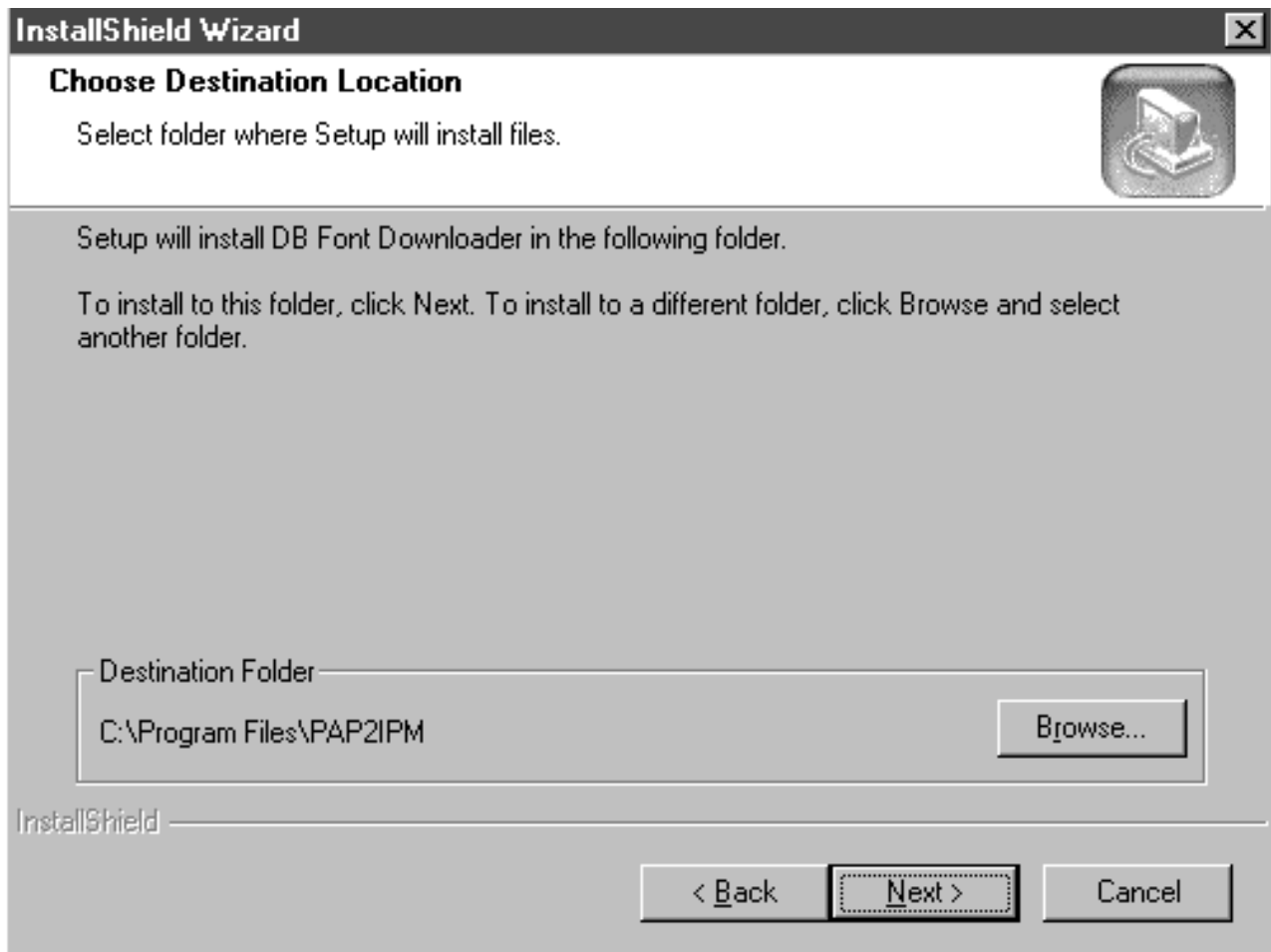


Figure 15. Choose destination location panel

5. By default, Infoprint DBCS Font Downloader is installed in C:\Program Files\PAP2IPM. You can click the **Browse** button to select a different folder. Click the **Next** button to continue.

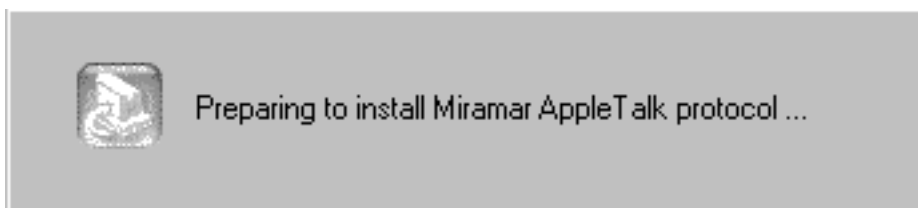


Figure 16. Preparing to install Miramar AppleTalk protocol... message

6. You must now install the Miramar AppleTalk protocol so that your Windows system can communicate with the Macintosh. The installer displays a message box containing installation instructions (Figure 17 on page 19).



Figure 17. Miramar AppleTalk installation instructions...

Read the instructions and click the **OK** button. To carry out the instructions, continue with this procedure.

7. From the **Start** menu, select **Settings -> Control panel -> Network and dial-up connections**.

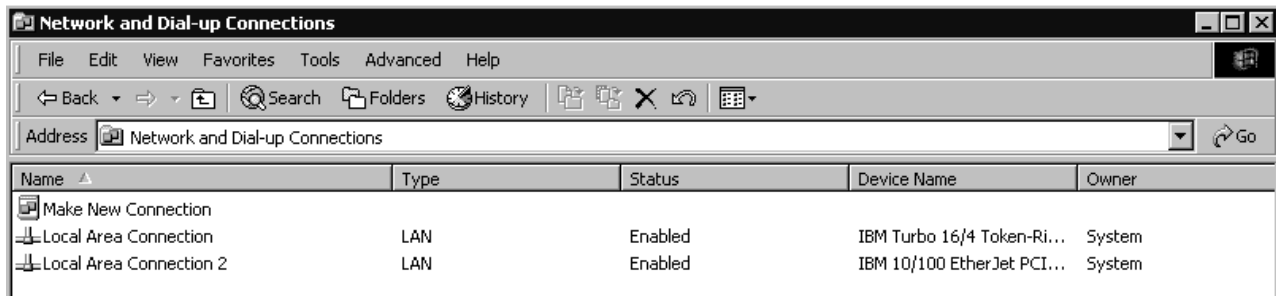


Figure 18. Network and dial-up connections dialog

8. Find the Ethernet card in the list of connections. In Figure 18, the Ethernet card is local area connection 2 with device name IBM 10/100 EtherJet™ PCI. Double-click the **Name** field.

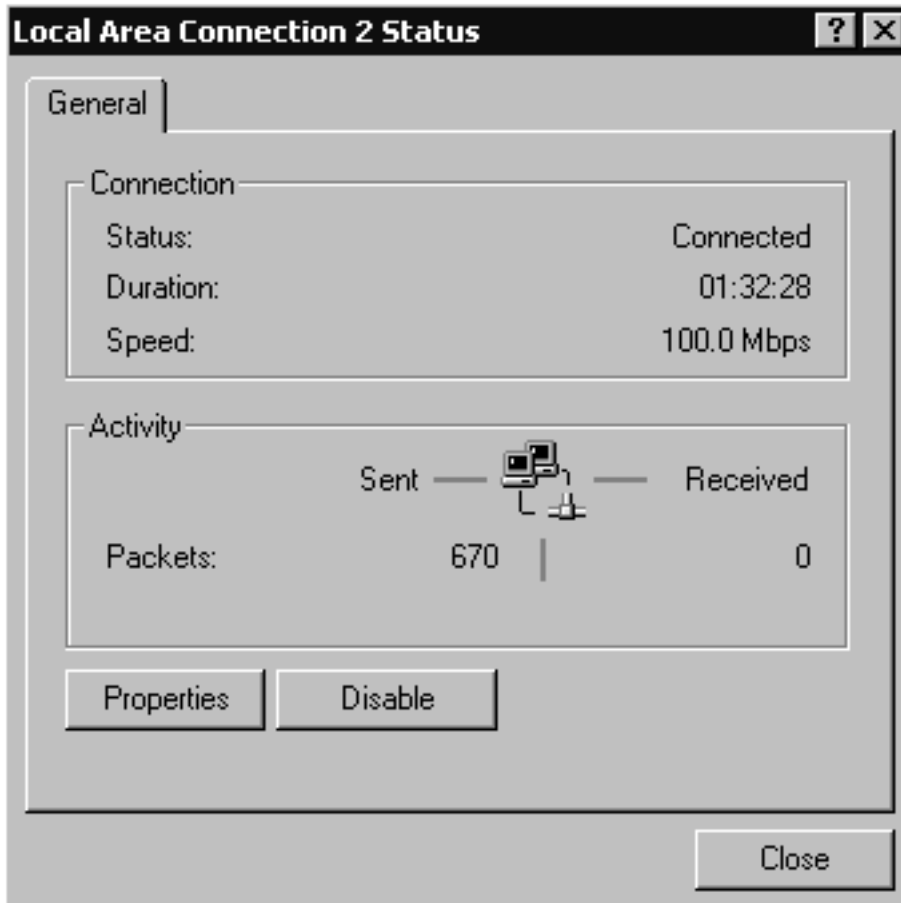


Figure 19. Status dialog

9. In the **Status** dialog (Figure 19), click the **Properties** button.

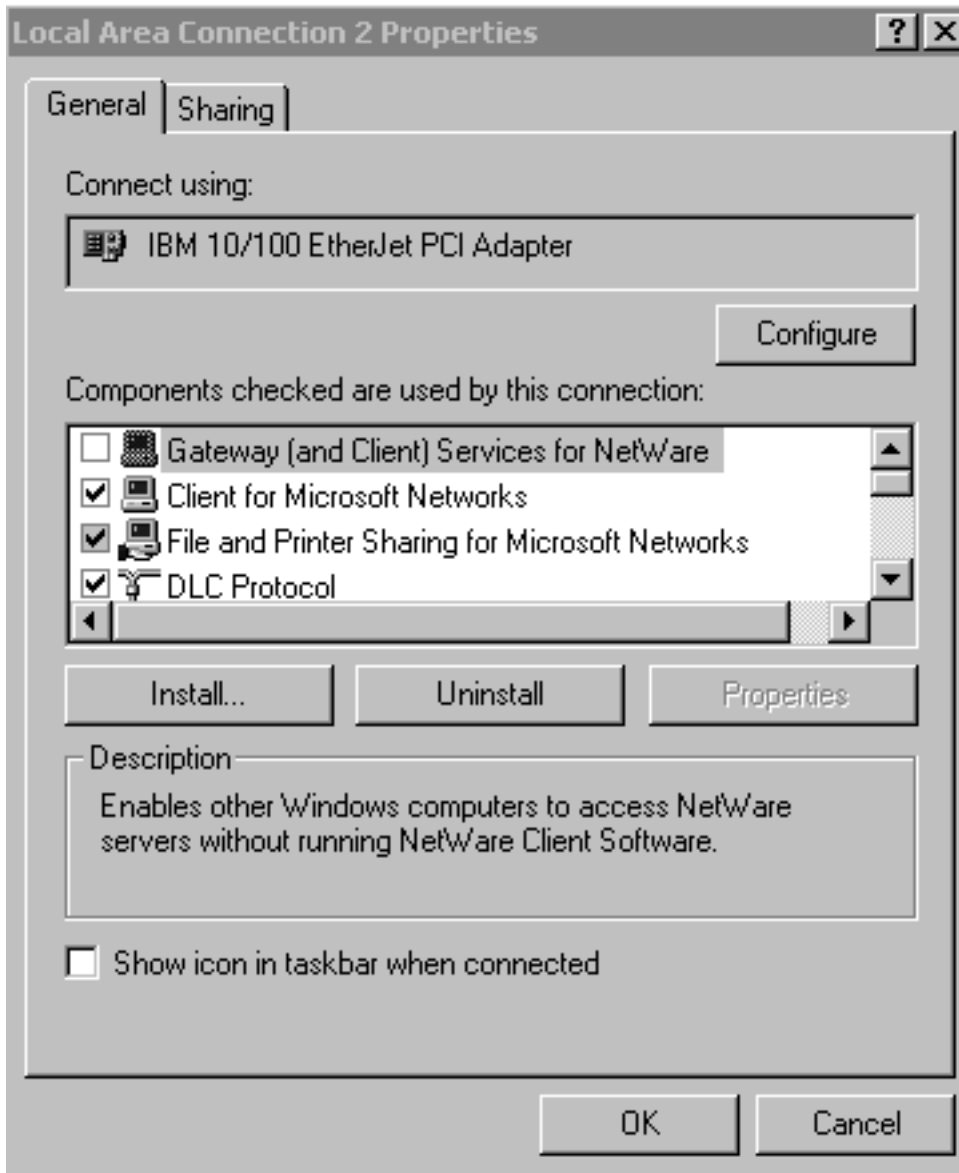


Figure 20. Properties dialog before installing AppleTalk

10. Click the **Install** button.

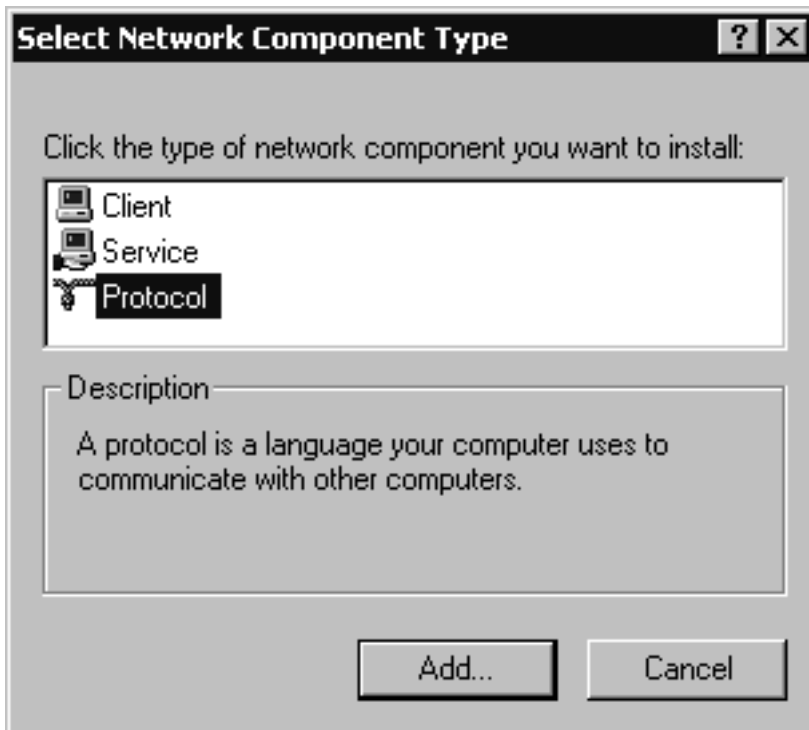


Figure 21. Select network component type dialog

11. Select **Protocol**, then click the **Add** button.

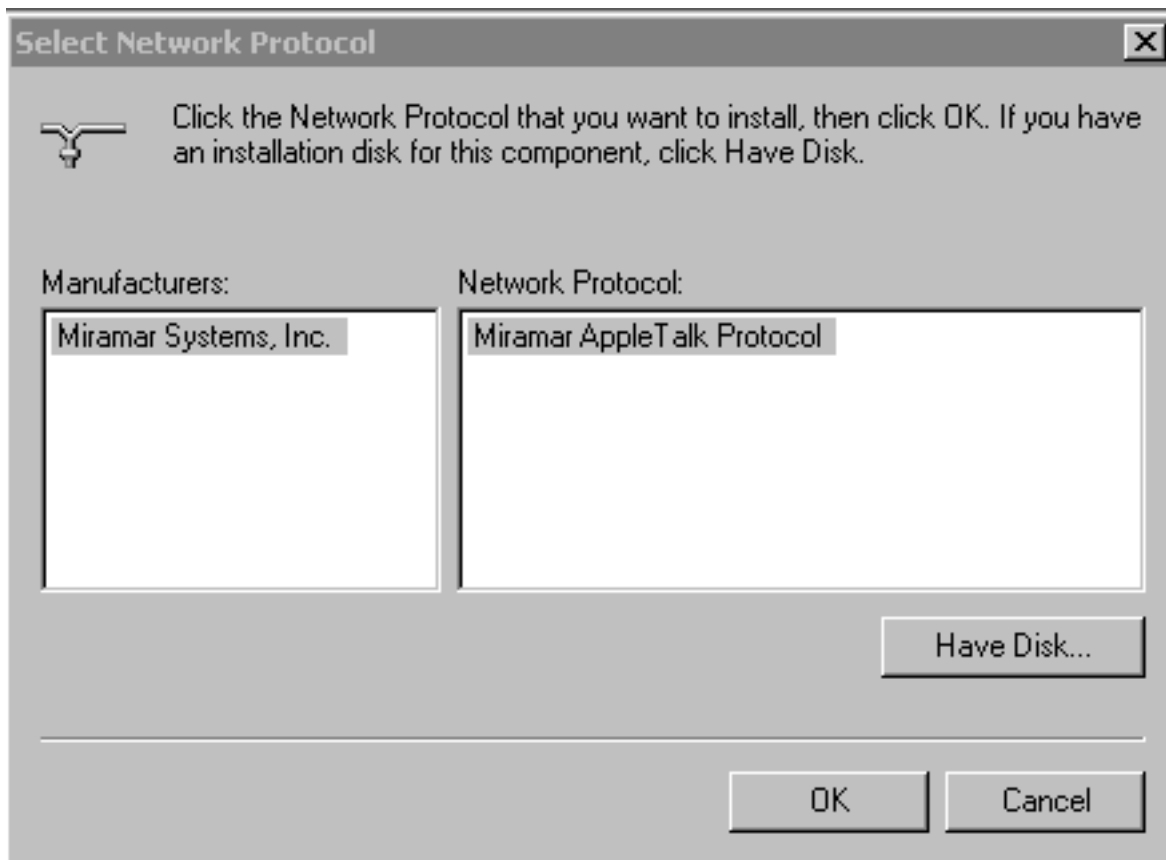


Figure 22. Select network protocol dialog

12. In the **Manufacturers** field of the **Select network protocol** dialog (Figure 22), select **Miramar Systems, Inc.** In the **Network protocol** field, select **Miramar AppleTalk protocol**, then click the **OK** button.

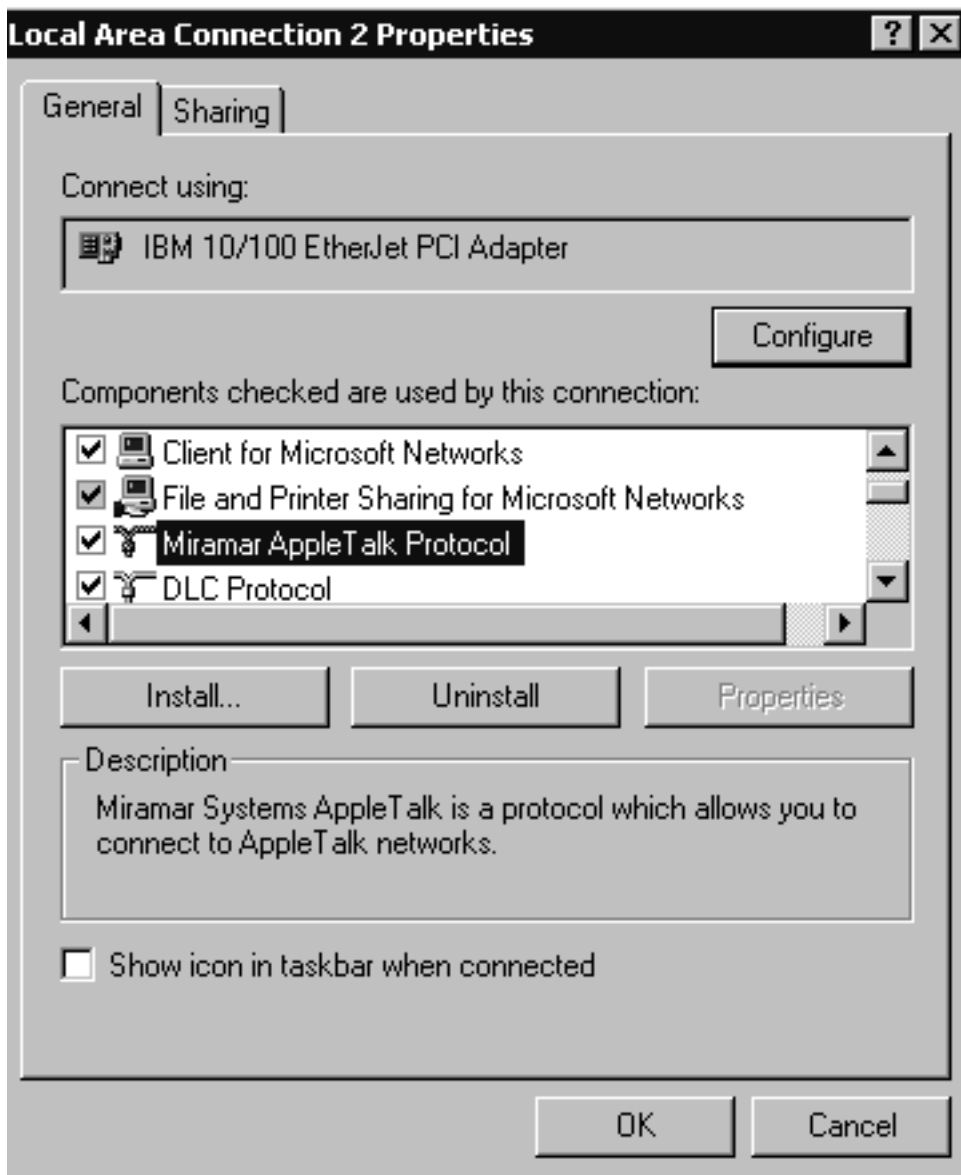


Figure 23. Properties dialog after installing AppleTalk

13. The **Properties** dialog (Figure 23) now shows Miramar AppleTalk in the list of supported protocols. Click the **OK** button.
14. Shut down and restart the computer.
15. Continue with "Initial configuration" on page 25.

Chapter 4. Configuring the Infoprint DBCS Font Downloader

You must configure the Infoprint DBCS Font Downloader after you install it. If necessary, you can change the initial configuration later.

Initial configuration

1. The first time that you restart your Windows system after installing the Infoprint DBCS Font Downloader, the **Infoprint DBCS Font Downloader setup** dialog (Figure 24) is automatically displayed.

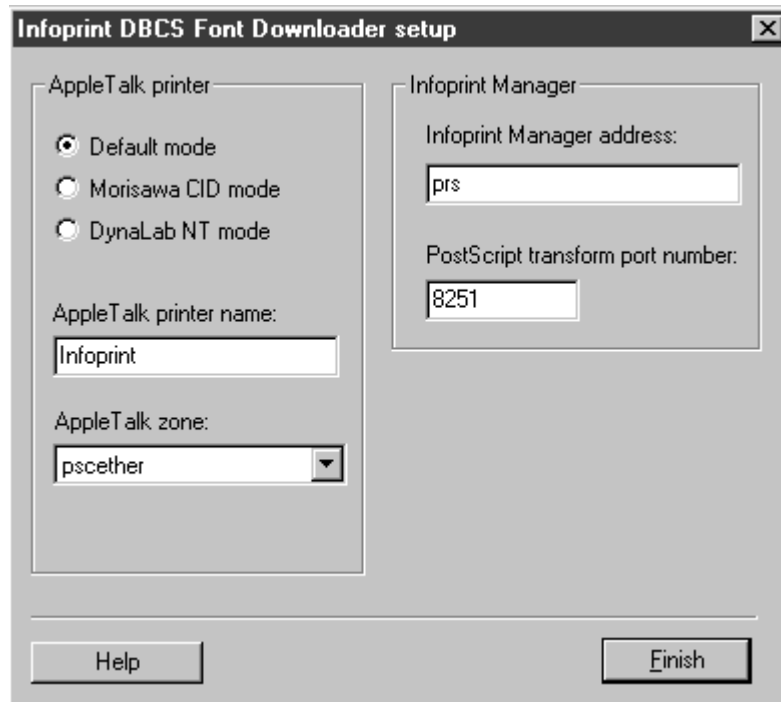


Figure 24. Setup dialog

2. Make the appropriate entries in these fields:

Default mode

Morisawa CID mode

DynaLab NT mode

These radio buttons allow you to select the mode that corresponds to the font download utility on the Macintosh. Because the Infoprint DBCS Font Downloader must be running in default mode when you configure it on the Macintosh, select **Default mode** now.

Note: You must change the mode before you download DynaLab fonts to an Infoprint Manager for Windows server, or Morisawa CID fonts to any Infoprint server. See “Changing the configuration” on page 28 for instructions.

AppleTalk printer name

To the AppleTalk network, the Infoprint DBCS Font Downloader appears to be a LaserWriter printer. Enter the printer name that the Infoprint DBCS Font Downloader uses.

AppleTalk zone

Enter the name of the AppleTalk zone in which you want to register the Infoprint DBCS Font Downloader. You cannot change this value when the Infoprint DBCS Font Downloader is running.

Infoprint Manager address

Enter the name or TCP/IP address of the Infoprint server where you want to download the fonts. Your system administrator can tell you this value, which may be either a host name like `prs` or a TCP/IP address like `9.99.224.94`.

PostScript transform port number

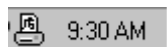
Enter the port number that the Infoprint server uses to connect to the workstation where the PostScript transform is running. Your system administrator can find this value in the `port=nnnn` statement in the `ps2afpd.cfg` file on the Infoprint server system.

3. Click the **Finish** button. You will see the message in Figure 25.



Figure 25. Starting service... message

When startup is complete, you will see a printer icon on the right side of the taskbar at the bottom of the screen:



4. Some Macintosh font downloader utilities download fonts only to the default desktop printer. Therefore, you must install the Infoprint DBCS Font Downloader as the default desktop printer on the Macintosh. To do this:
 - a. On your Macintosh system, click the system menu (the Apple icon in the upper left corner), then click **Chooser**.

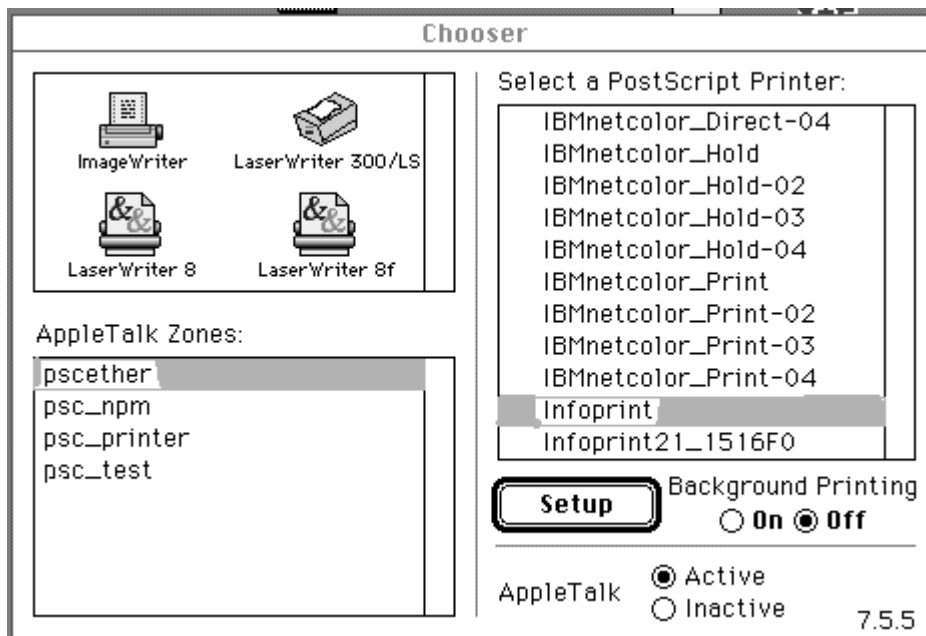


Figure 26. Macintosh Chooser dialog

- b. In the upper left box of the **Chooser** dialog (Figure 26), select the **LaserWriter 8** icon.
- c. In the lower left box, select the AppleTalk zone where the Infoprint DBCS Font Downloader is registered.
- d. In the right box, you should see the AppleTalk printer name that you entered on the **Setup** dialog or the **Settings** tab. Select this name, then click **Setup**.

Note: If you do not see the printer name, you may not have registered the Infoprint DBCS Font Downloader in the right AppleTalk zone. To change the registration:

- 1) On your Windows system, select **Start -> Programs -> DB Font Downloader -> DB Font Downloader utilities -> Settings** (Figure 27 on page 28).
 - 2) Click the **Stop** button.
 - 3) Enter the zone name in the **AppleTalk zone** field.
 - 4) Click the **Apply** button.
 - 5) Click the **Start** button.
- e. When the printer setup program prompts you for a PPD file, click **Generic**.

After the printer setup is complete, you should see your AppleTalk printer icon on the desktop. A black border around the icon identifies it as the default desktop printer.



For more information on how to install a desktop printer, see the reference manual for your Macintosh operating system.

Changing the configuration

To change the Infoprint DBCS Font Downloader settings after the initial configuration, follow these steps::

1. From the **Start** menu, select **Programs -> DB Font Downloader -> DB Font Downloader utilities**; or double-click the printer icon in the taskbar.
2. In the **Infoprint DBCS Font Downloader utilities** dialog, click the **Settings** tab (Figure 27).

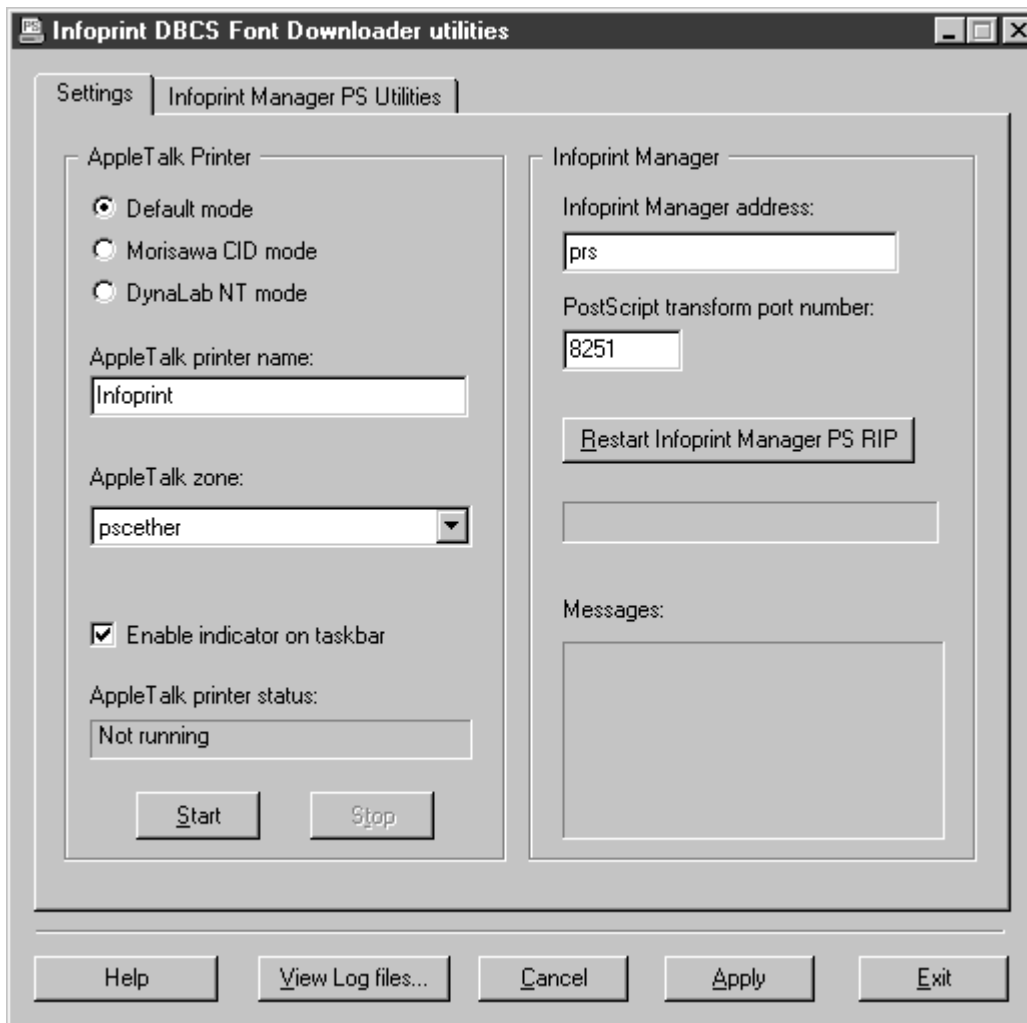


Figure 27. Settings tab

3. Check the status of the Infoprint DBCS Font Downloader in the **AppleTalk printer status** field.
 - If a download is in process, you cannot change any of the following values:
 - **Mode**
 - **Infoprint Manager address**
 - **PostScript transform port number**
- Wait until the status is Idle.
- If the Infoprint DBCS Font Downloader is running, you cannot change either of the following values:
 - **AppleTalk printer name**

– **AppleTalk zone**

Click the **Stop** button on this tab and wait until the status is Not running.

4. Make the appropriate changes in these fields:

Default mode

Morisawa CID mode

DynaLab NT mode

These radio buttons allow you to select the mode that corresponds to the font download utility on the Macintosh.

- To download Morisawa CID fonts, select **Morisawa CID mode**.
- To download DynaLab fonts:
 - If your Infoprint server runs on Windows NT or Windows 2000, select **DynaLab NT mode**.
 - If your Infoprint server runs on AIX or OS/400, select **Default mode**.
- To download all other fonts, select **Default mode**.
- Before you configure the Infoprint DBCS Font Downloader on the Macintosh, select **Default mode**.

You cannot change this setting when a download is in process.

AppleTalk printer name

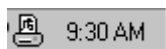
To the AppleTalk network, the Infoprint DBCS Font Downloader appears to be a LaserWriter printer. Enter the printer name that the Infoprint DBCS Font Downloader uses. You cannot change this value when Infoprint DBCS Font Downloader is running.

AppleTalk zone

Enter the name of the AppleTalk zone in which you want to register the Infoprint DBCS Font Downloader. You cannot change this value when Infoprint DBCS Font Downloader is running.

Enable indicator on taskbar

If you select this check box, a printer icon appears in the taskbar at the bottom of the screen when the Infoprint DBCS Font Downloader is running.



When a download is in process, the icon moves. If the icon does not appear, either the Infoprint DBCS Font Downloader is not running or the indicator is disabled. Status also appears in the **AppleTalk printer status** field on this tab.

Note: When you first configure the Infoprint DBCS Font Downloader, the indicator is enabled by default.

Infoprint Manager address

Enter the name or TCP/IP address of the Infoprint server where you want to download the fonts. Your system administrator can tell you this value, which may be either a host name like prs or a TCP/IP address like 9.99.224.94. You cannot change this value when a download is in process.

PostScript transform port number

Enter the port number that the Infoprint server uses to connect to the workstation where the PostScript transform is running. Your system

administrator can find this value in the **port=nnnn** statement in the ps2afpd.cfg file on the Infoprint server system. You cannot change this value when a download is in process.

- | 5. Click the **Apply** button.
- | 6. If necessary, click the **Start** button to restart the Infoprint DBCS Font Downloader. It is best to leave it running except when you want to change the configuration.
- |

Chapter 5. Infoprint PostScript utilities

To run the Infoprint PostScript utilities:

1. From the **Start** menu, select **Programs** -> **DB Font Downloader** -> **DB Font Downloader utilities**; or double-click the printer icon in the taskbar.
2. In the **Infoprint DBCS Font Downloader utilities** dialog, click the **Infoprint Manager PS utilities** tab (Figure 28).

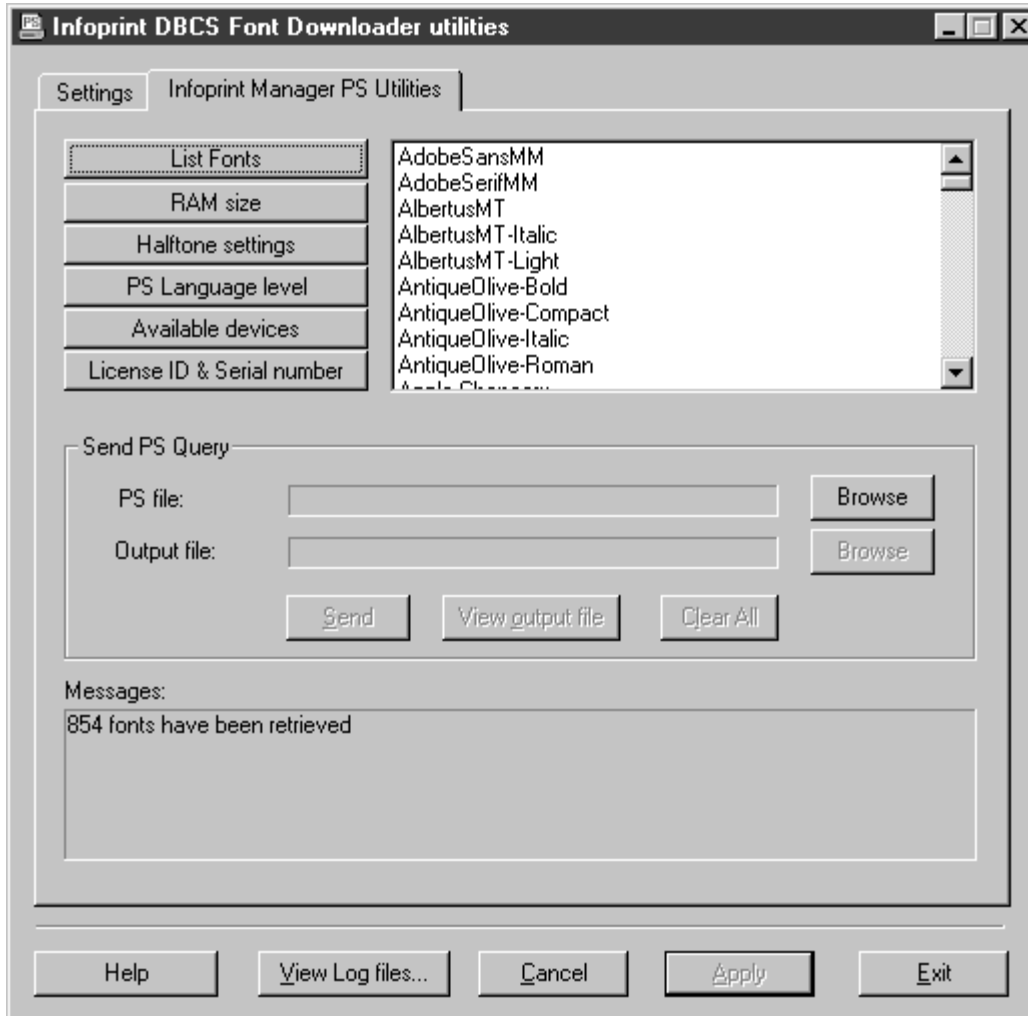


Figure 28. Infoprint Manager PS utilities tab

From this tab, you can submit any PostScript query to the Infoprint PostScript interpreter. There are six predefined PostScript queries:

List fonts

Lists all the PostScript fonts available on the Infoprint server system that you specified when you configured the Infoprint DBCS Font Downloader.

RAM size

Shows the amount of RAM that was available when the PostScript interpreter started. If you receive a limitcheck pdfprint error, the RAM size may not be set high enough.

Halftone settings

Shows the halftone settings of the PostScript interpreter.

PS Language level

Shows the PostScript language level. This should be Level 3.

Available devices

Shows the available devices on the Infoprint server system that you specified in the **Settings** tab. These devices must include %disk0%, the hard drive. If %disk0% is not available on an AIX system, Infoprint Manager was probably installed without the Kanji Font option.

License ID & Serial number

Shows the license ID and the serial number of the PostScript interpreter. You may need to check the license ID because on AIX, the single-byte and double-byte PostScript interpreters have different license IDs. The double-byte ID is LN-052-024.

In the **Send PS query** box, you can specify input and output files.

PS file

In this field, you can enter the name of a file that contains PostScript queries to submit to the PostScript interpreter.

For example, after you download JapaneseFont-W3-83pv-RKSJ-H, you can create a PostScript file to query whether the download was successful. The query file looks like this:

```
%!  
/JapaneseFont-W3-83pv-RKSJ-H findfont 20 scalefont setfont  
100 300 moveto  
<889f 88a0 88a1 88a2 88a3 88a4 88a5 88a6 88a7 88a8 88a9 88aa 88ab 88ac  
88ad 88ae> show  
showpage
```

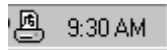
Click **Send** to submit the query file.

Output file

The output from PostScript queries always appears in the text box on this panel. If you enter the name of a file in this field, the output is also written to that file. Click **View output file** to display the output file.

Chapter 6. Starting and stopping the Infoprint DBCS Font Downloader

The Infoprint DBCS Font Downloader is a Windows service that is set to start automatically whenever the Windows system starts up. You know that it is running if you see a printer icon in the taskbar:



If you do not see the printer icon, the Infoprint DBCS Font Downloader is stopped, the printer icon is disabled, or both. Look at the **Settings** tab in the **Infoprint DBCS Font Downloader utilities** dialog (Figure 29). The **AppleTalk printer status** field in this tab shows whether the Infoprint DBCS Font Downloader is running. The **Enable indicator on taskbar** check box shows whether the printer icon is enabled.

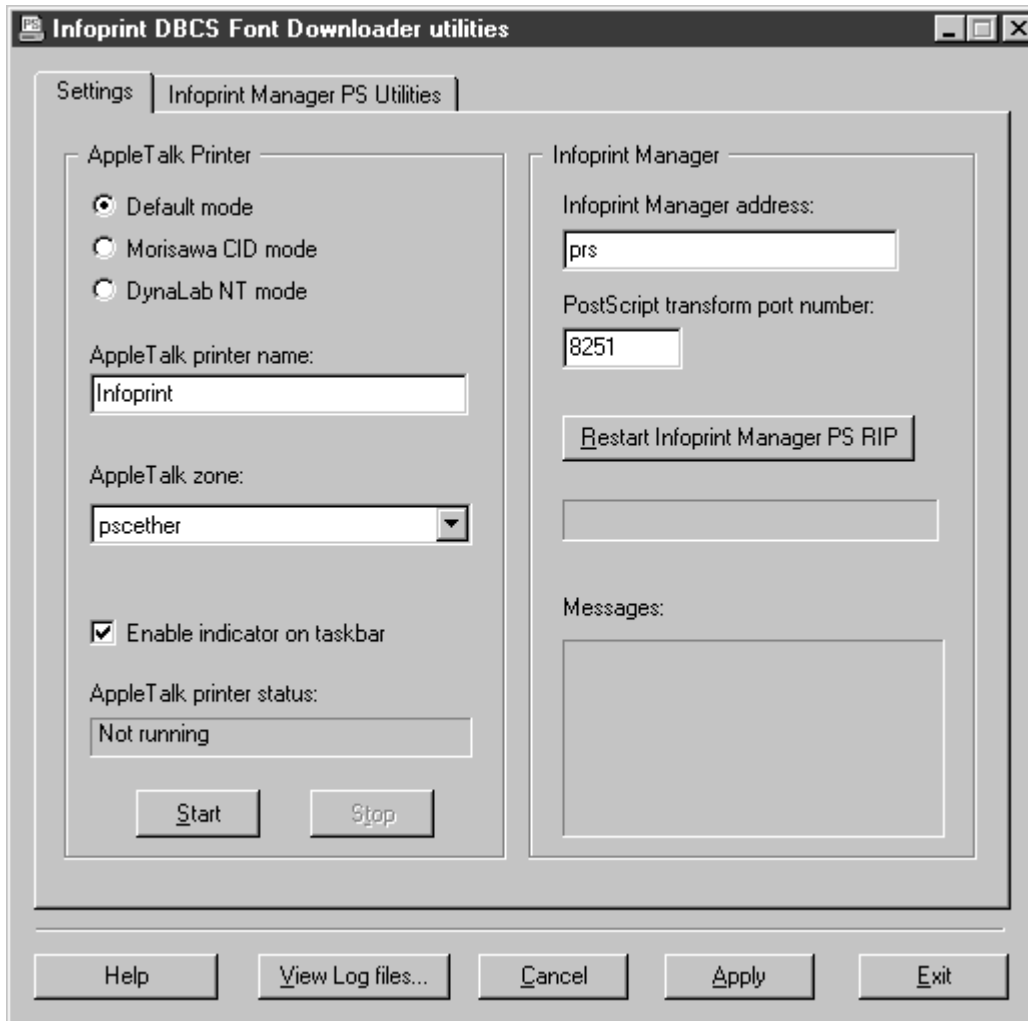


Figure 29. Settings tab

You can stop the Infoprint DBCS Font Downloader in any of these ways:

- Double-click the printer icon in the taskbar to open the **Infoprint DBCS Font Downloader utilities** dialog. On the **Settings** tab (Figure 29 on page 33), click **Stop**.
- From the **Start** menu, select **Programs -> DB Font Downloader -> DB Font Downloader utilities**. On the **Settings** tab (Figure 29 on page 33), click **Stop**.

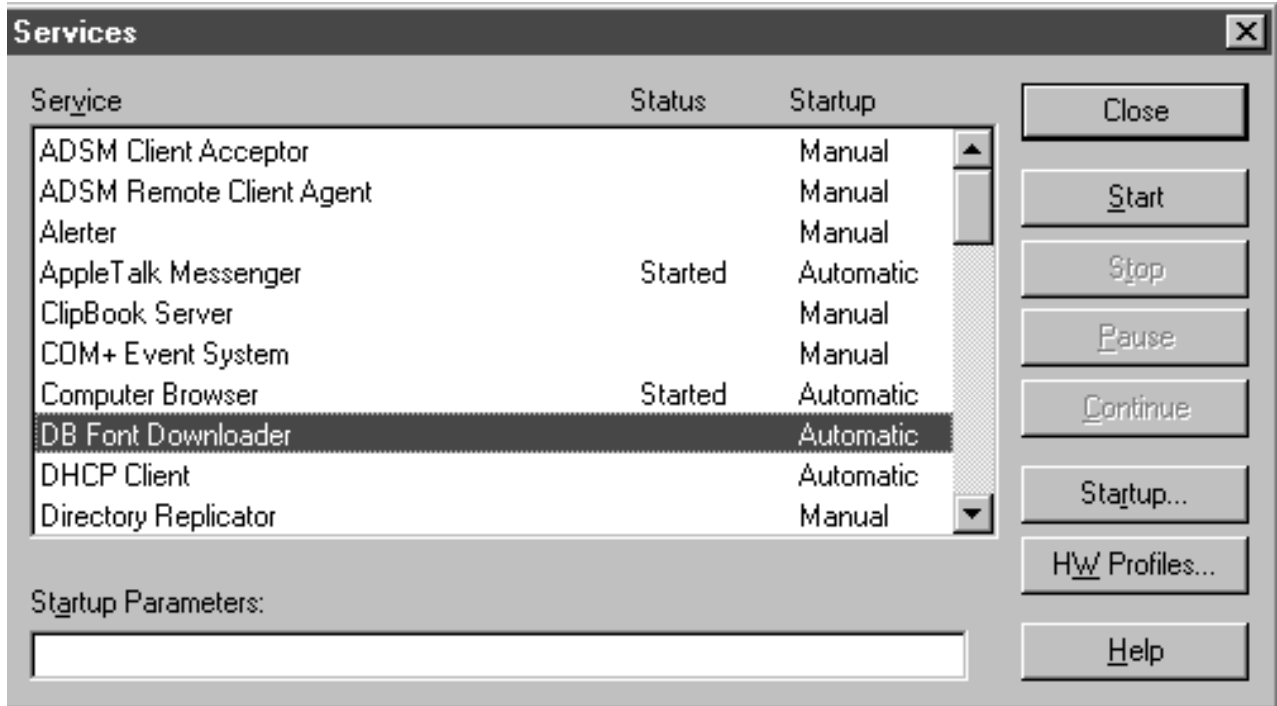


Figure 30. Services dialog

- From the **Start** menu, select **Settings -> Control panel**, then double-click the **Services** icon. In the **Services** dialog (Figure 30), select **DB Font Downloader**, then click **Stop**.

To restart the Infoprint DBCS Font Downloader, use either of these methods:

- From the **Start** menu, select **Programs -> DB Font Downloader -> DB Font Downloader utilities**. On the **Settings** tab (Figure 29 on page 33), click **Start**.
- From the **Start** menu, select **Settings -> Control panel**, then double-click the **Services** icon. In the **Services** dialog (Figure 30), select **DB Font Downloader**, then click **Start**.

Chapter 7. Downloading double-byte fonts from the Macintosh to Infoprint

1. On the Windows system, make sure that the Infoprint DBCS Font Downloader is running. For more information, see Chapter 6, “Starting and stopping the Infoprint DBCS Font Downloader” on page 33.

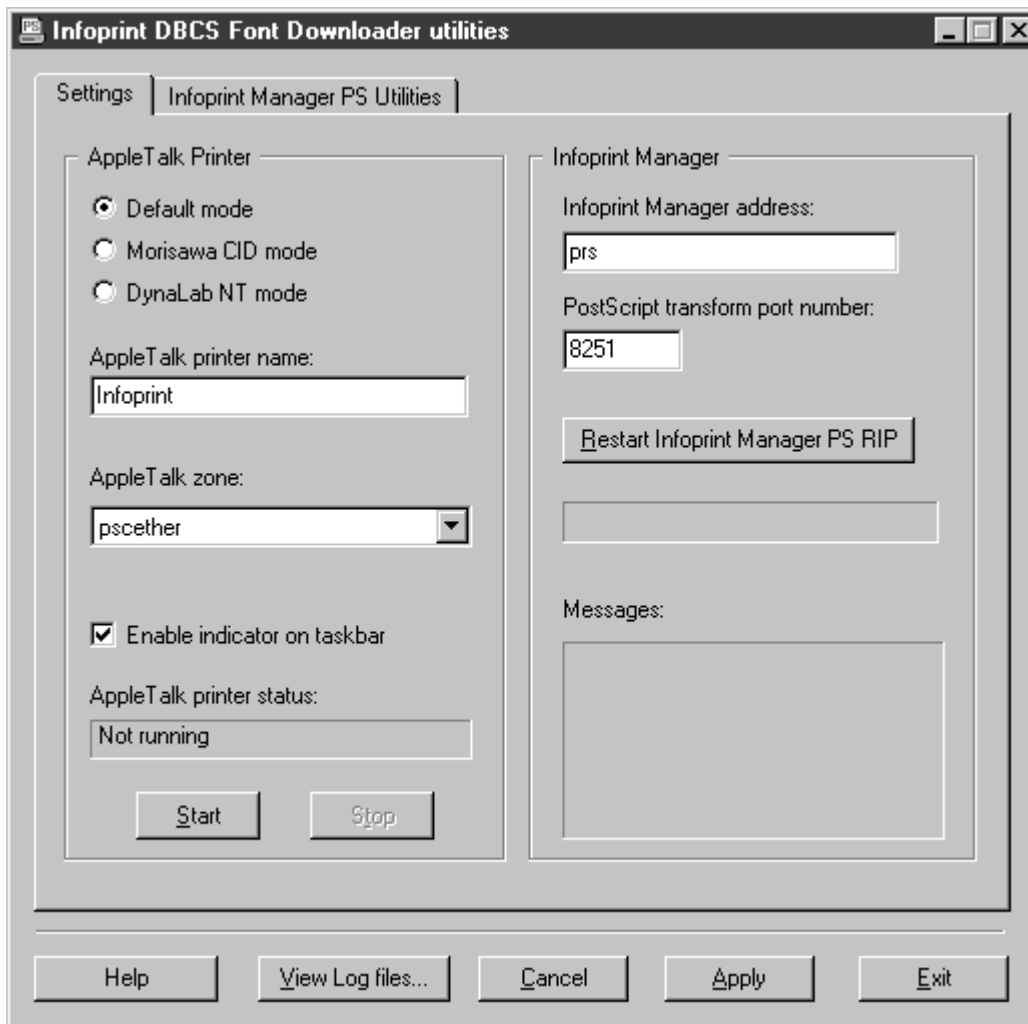


Figure 31. Settings tab

2. On the **Settings** tab of the **Infoprint DBCS Font Downloader utilities** dialog (Figure 31), select the appropriate mode:
 - To download Morisawa CID fonts, select **Morisawa CID mode**.
 - To download DynaLab fonts:
 - If your Infoprint server runs on Windows NT or Windows 2000, select **DynaLab NT mode**.
 - If your Infoprint server runs on AIX or OS/400, select **Default mode**.
 - To download all other fonts, select **Default mode**.

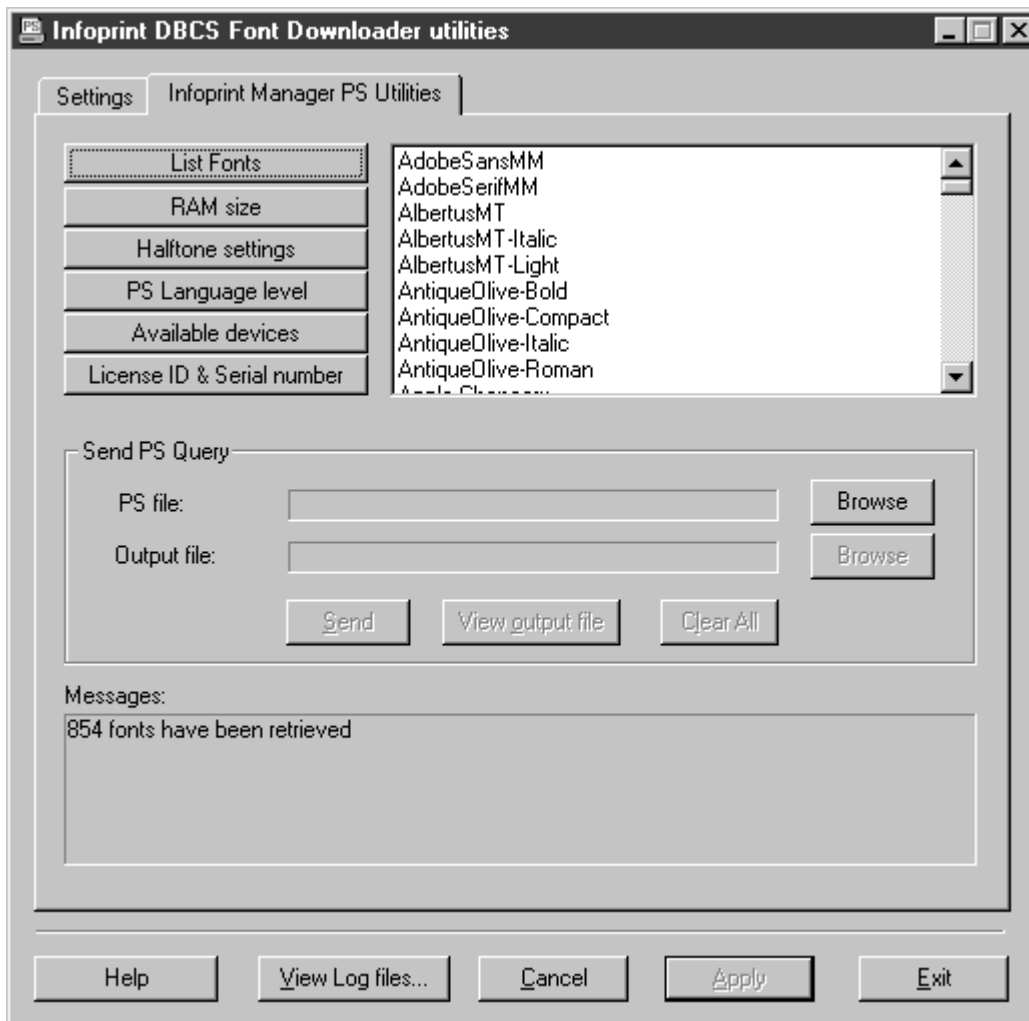


Figure 32. Infoprint Manager PS utilities tab

3. On the **Infoprint Manager PS utilities** tab of the **Infoprint DBCS Font Downloader utilities** dialog (Figure 32), click **Available devices**. Verify that the device %disk0% (the hard drive) is available. You must download all fonts to this device.

Note: If %disk0% is not available on an AIX system, Infoprint Manager was probably installed without the Kanji Font option.

4. On the Macintosh, make sure that the default desktop printer is the Infoprint DBCS Font Downloader. For more information, see Initial configuration, step 4 on page 26.
5. Run the Macintosh double-byte font downloader utility.
6. Restart the PostScript interpreter so that it can use the downloaded fonts.
 - Some Macintosh font downloader utilities prompt you to restart the PostScript interpreter. If the utility offers this option, accept it.
 - If the font downloader utility does not restart the PostScript interpreter, go back to your Windows system. On the **Settings** tab of the **Infoprint DBCS Font Downloader utilities** dialog (Figure 31 on page 35), click the **Restart Infoprint Manager PS RIP** button.

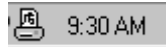
Chapter 8. Error handling

If an error occurs, you will see a message box that describes the error. The application log in the Windows Event Viewer shows more detailed information. To start the Event Viewer:

1. From the **Start** menu, select **Help**.
2. On the **Index** tab of the **Help topics** dialog, search on **Event viewer**. Select the index entry for **Event viewer**, then click **Display**.
3. In the help topic, click the arrow icon.

If an error occurs when a job is in progress, you can find more detailed information about the error in the Infoprint DBCS Font Downloader log files. To view the log files:

1. From the **Start** menu, select **Programs -> DB Font Downloader -> DB Font Downloader utilities**; or double-click the printer icon in the taskbar:



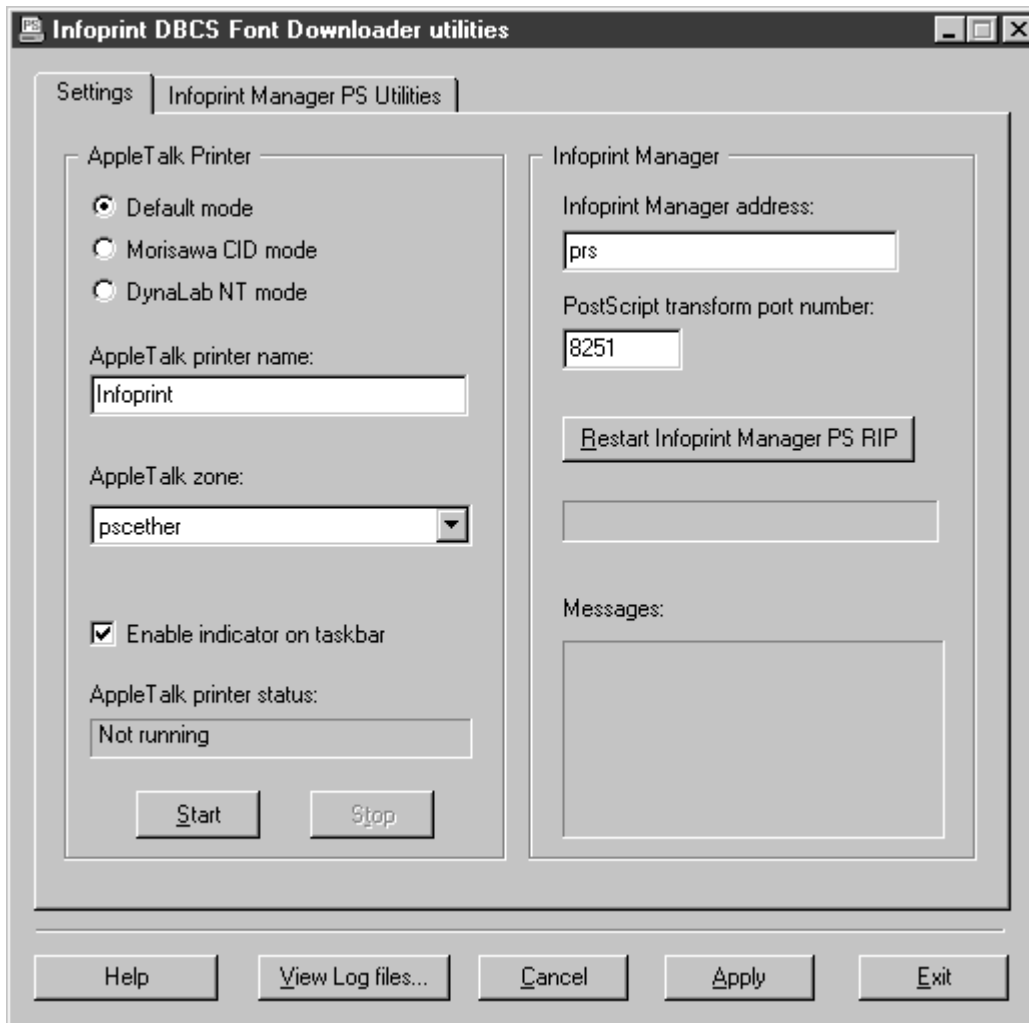


Figure 33. Settings tab

2. In the **Infoprint DBCS Font Downloader utilities** dialog (Figure 33), click **View log files...**

The Infoprint DBCS Font Downloader usually generates a log file for each day. For example, the log file for October 24, 2000, is 10_24_00_paplog.log. Because log files can be as big as tens of megabytes, you should allow plenty of free disk space.

Chapter 9. Uninstalling the Infoprint DBCS Font Downloader

You do not have to uninstall the Infoprint DBCS Font Downloader after you have downloaded all your fonts. If you want to uninstall it, you must perform two tasks:

1. Uninstall the Infoprint DBCS Font Downloader itself. This process is the same on Windows NT and Windows 2000.
2. Uninstall the Miramar AppleTalk protocol. This process is different on Windows NT and Windows 2000.

Uninstalling the Font Downloader

1. From the **Start** menu, select **Programs -> DB Font Downloader -> Uninstall DB Font Downloader**.

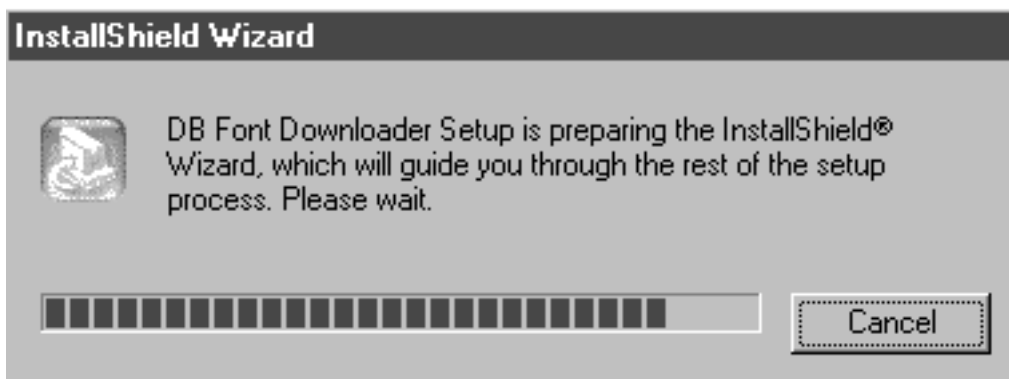


Figure 34. Initial uninstallation message

2. InstallShield asks you to confirm or cancel the uninstallation (Figure 35). To continue, click **OK**.

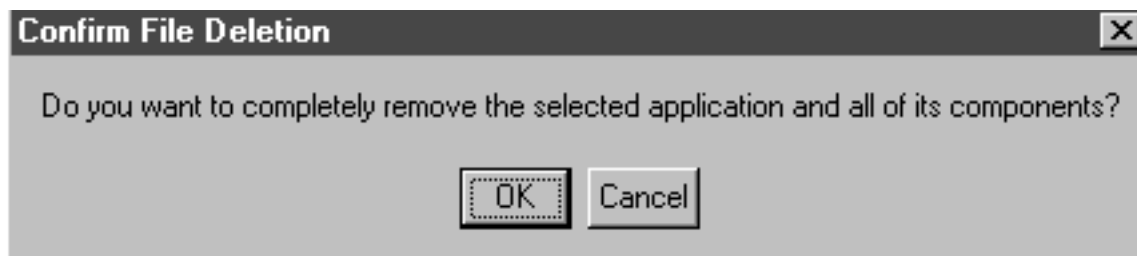


Figure 35. Confirm file deletion dialog



Figure 36. Maintenance complete panel

3. When you see Figure 36, click the **Finish** button.
4. Continue with “Uninstalling the Miramar AppleTalk protocol from Windows NT” or “Uninstalling the Miramar AppleTalk protocol from Windows 2000” on page 44.

Uninstalling the Miramar AppleTalk protocol from Windows NT

1. From the **Start** menu, select **Settings** → **Control panel**, then double-click the **Network** icon.
2. In the **Network** dialog, select the **Protocols** tab (Figure 37 on page 41).

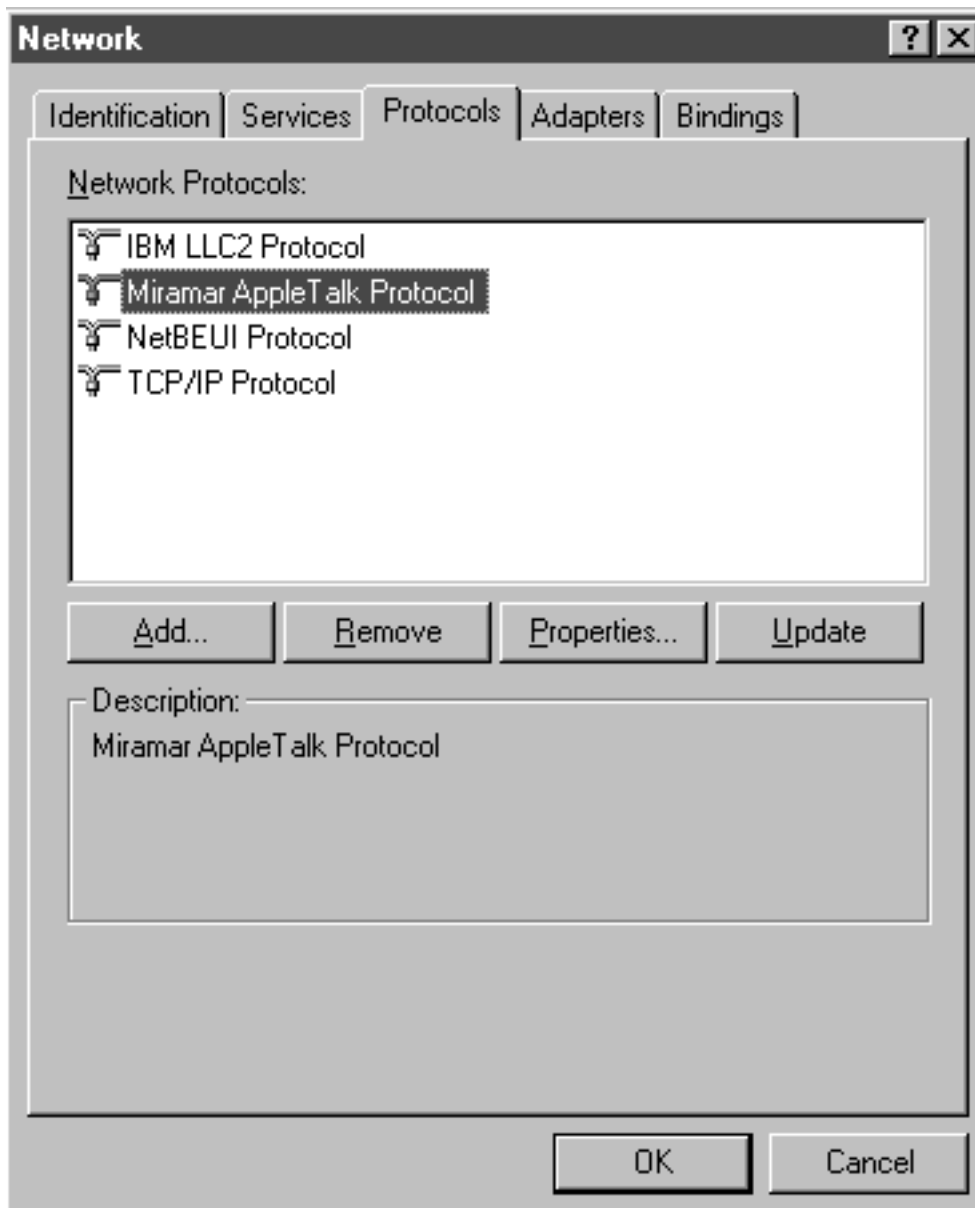


Figure 37. Protocols tab before removing AppleTalk

3. In the **Network protocol** field, select **Miramar AppleTalk protocol**, then click the **Remove** button.

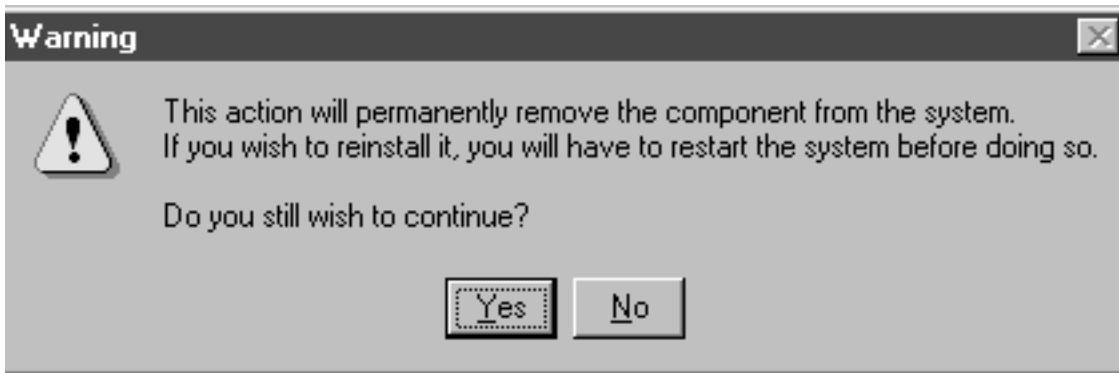


Figure 38. Warning dialog

4. To continue, click the **Yes** button.

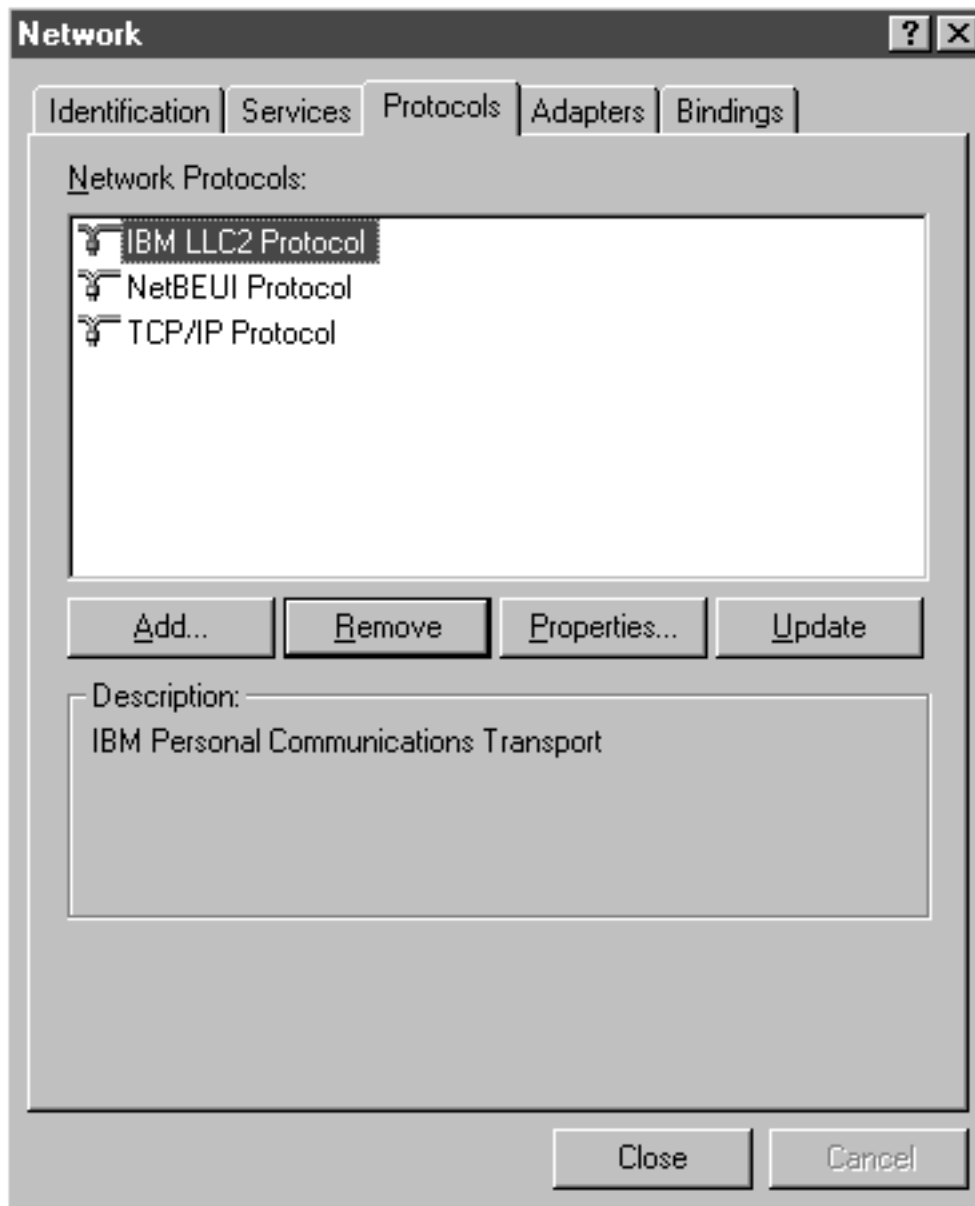


Figure 39. Protocols tab after removing AppleTalk

5. When the **Network** dialog reappears (Figure 39), Miramar AppleTalk has been removed from the list of supported protocols. Click the **Close** button.

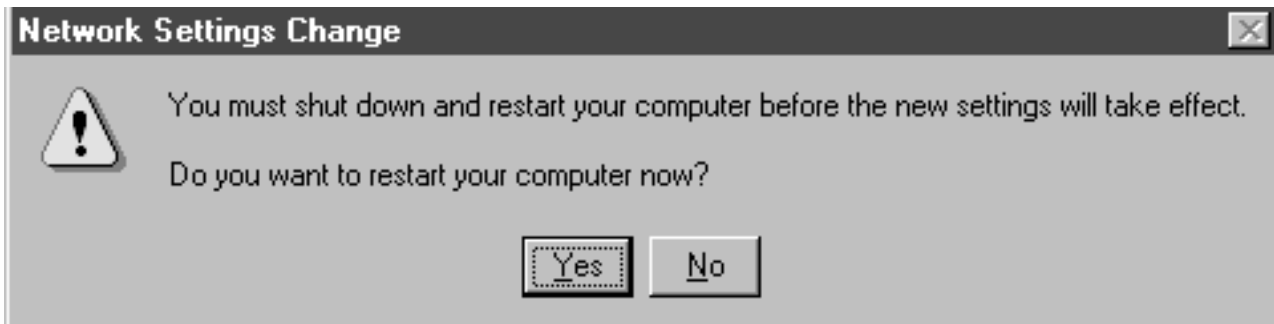


Figure 40. Network settings change dialog

6. Click the **Yes** button to shut down and restart the computer.

Uninstalling the Miramar AppleTalk protocol from Windows 2000

1. From the **Start** menu, select **Settings** → **Control panel** → **Network and dial-up connections**.

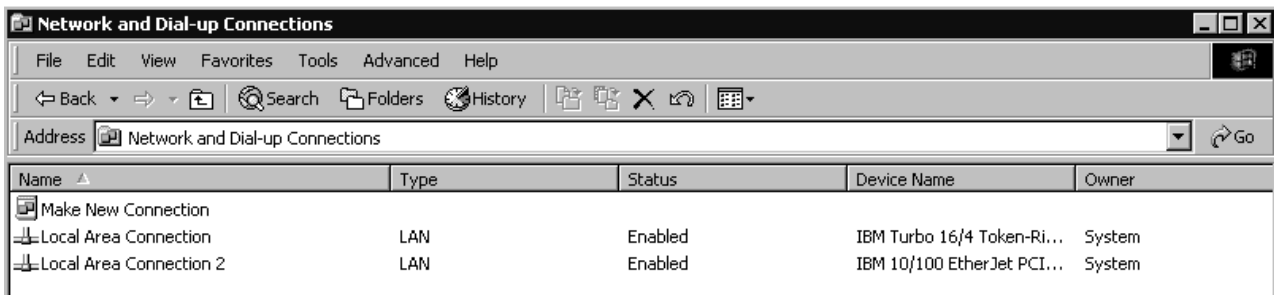


Figure 41. Network and dial-up connections dialog

2. Find the Ethernet card in the list of connections. In Figure 41, the Ethernet card is local area connection 2 with device name IBM 10/100 EtherJet PCI. Double-click the **Name** field.

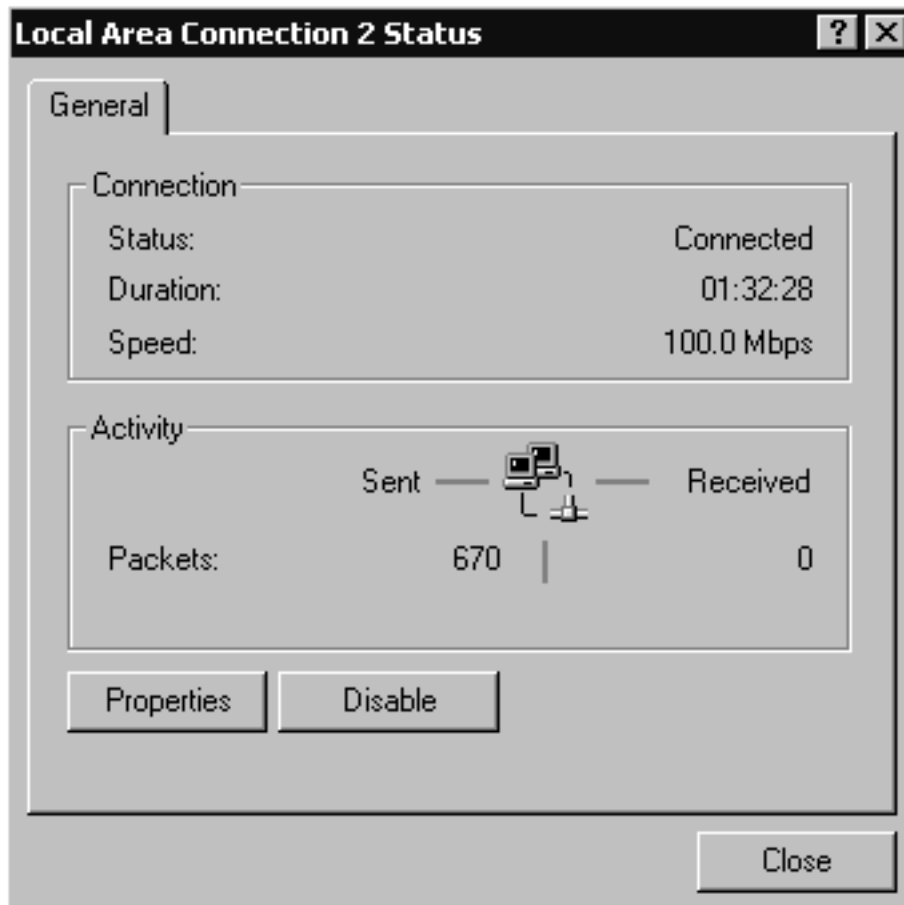


Figure 42. Status dialog

3. In the **Status** dialog (Figure 42), click the **Properties** button.

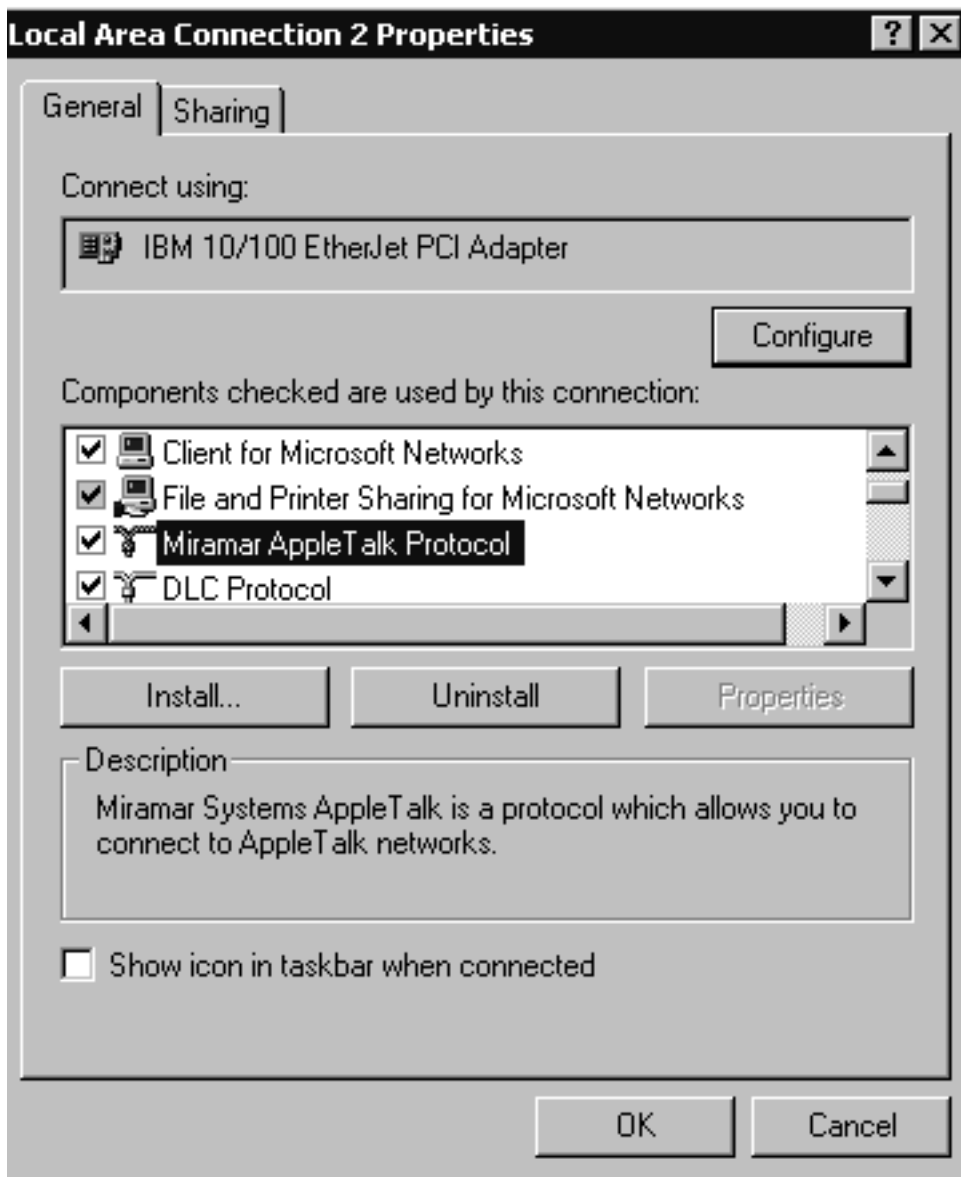


Figure 43. Properties dialog before removing AppleTalk

4. In the **Properties** dialog (Figure 43), select **Miramar AppleTalk protocol**, then click the **Uninstall** button.

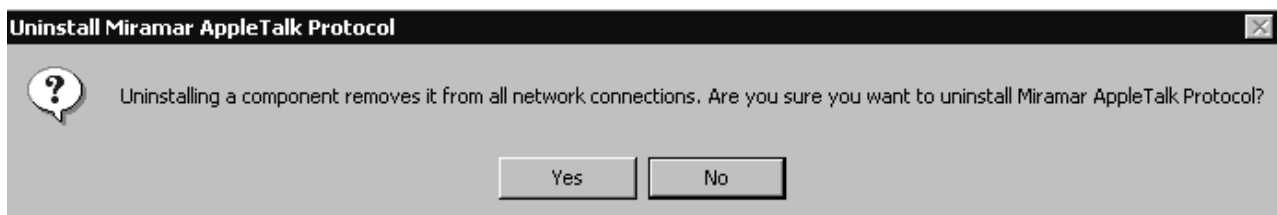


Figure 44. Uninstall confirmation dialog

5. Click the **Yes** button to continue.

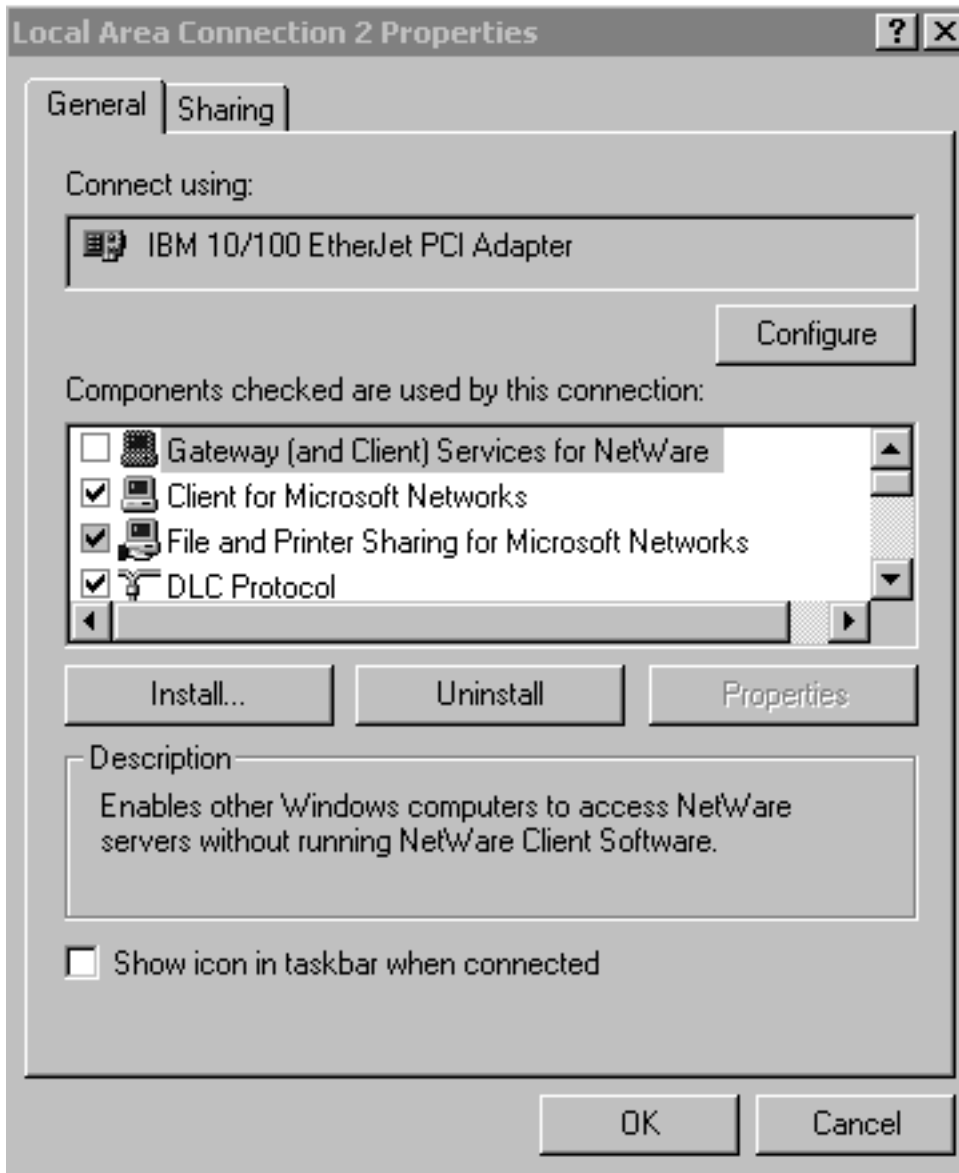


Figure 45. Properties dialog after removing AppleTalk

6. In the **Properties** dialog (Figure 45), Miramar AppleTalk has been removed from the list of supported protocols. Click the **OK** button.
7. Shut down and restart the computer.

Notices

This information was developed for products and services offered in the U.S.A.

IBM may not offer the products, services, or features discussed in this document in other countries. Consult your local IBM representative for information on the products and services currently available in your area. Any reference to an IBM product, program, or service is not intended to state or imply that only that IBM product, program, or service may be used. Any functionally equivalent product, program, or service that does not infringe any IBM intellectual property rights may be used instead. However, it is the user's responsibility to evaluate and verify the operation of any non-IBM product, program, or service.

IBM may have patents or pending patent applications covering subject matter described in this document. The furnishing of this document does not give you any license to these patents. You can send license inquiries, in writing, to:

IBM Director of Licensing
IBM Corporation
North Castle Drive
Armonk, NY 10504-1785 U.S.A.

The following paragraph does not apply to the United Kingdom or any other country where such provisions are inconsistent with local law:

INTERNATIONAL BUSINESS MACHINES CORPORATION PROVIDES THIS PUBLICATION "AS IS" WITHOUT WARRANTY OF ANY KIND, EITHER EXPRESS OR IMPLIED, INCLUDING, BUT NOT LIMITED TO, THE IMPLIED WARRANTIES OF NON-INFRINGEMENT, MERCHANTABILITY OR FITNESS FOR A PARTICULAR PURPOSE. Some states do not allow disclaimer of express or implied warranties in certain transactions, therefore, this statement may not apply to you.

This information could include technical inaccuracies or typographical errors. Changes are periodically made to the information herein; these changes will be incorporated in new editions of the publication. IBM may make improvements and/or changes in the product(s) described in this publication at any time without notice.

Any references in this information to non-IBM Web sites are provided for convenience only and do not in any manner serve as an endorsement of those Web sites. The materials at those Web sites are not part of the materials for this IBM product and use of those Web sites is at your own risk.

IBM may use or distribute any of the information you supply in any way it believes appropriate without incurring any obligation to you.

For license inquiries regarding double-byte (DBCS) information, contact the IBM Intellectual Property Department in your country or send inquiries, in writing, to:

IBM World Trade Asia Corporation
Licensing
2-31 Roppongi 3-chome, Minato-ku
Tokyo 106, Japan

Licensees of this program who wish to have information about it for the purpose of enabling: (i) the exchange of information between independently created programs and other programs (including this one) and (ii) the mutual use of the information which has been exchanged, should contact:

IBM Corporation
Department 11PA Building 002S
PO Box 1900
Boulder CO 80301 USA

Such information may be available, subject to appropriate terms and conditions, including in some cases, payment of a fee. The licensed program described in this document and all licensed material available for it are provided by IBM under terms of the IBM Customer Agreement, IBM International Program License Agreement or any equivalent agreement between us.

Any performance data contained herein was determined in a controlled environment. Therefore, the results obtained in other operating environments may vary significantly. Some measurements may have been made on development-level systems and there is no guarantee that these measurements will be the same on generally available systems. Furthermore, some measurement may have been estimated through extrapolation. Actual results may vary. Users of this document should verify the applicable data for their specific environment.

Information concerning non-IBM products was obtained from the suppliers of those products, their published announcements or other publicly available sources. IBM has not tested those products and cannot confirm the accuracy of performance, compatibility or any other claims related to non-IBM products. Questions on the capabilities of non-IBM products should be addressed to the suppliers of those products.

All statements regarding IBM's future direction or intent are subject to change or withdrawal without notice, and represent goals and objectives only.

This information contains examples of data and reports used in daily business operations. To illustrate them as completely as possible, the examples include the names of individuals, companies, brands, and products. All of these names are fictitious and any similarity to the names and addresses used by an actual business enterprise is entirely coincidental.

COPYRIGHT LICENSE:

This information contains sample application programs in source language, which illustrates programming techniques on various operating platforms. You may copy, modify, and distribute these sample programs in any form without payment to IBM, for the purposes of developing, using, marketing or distributing application programs conforming to the application programming interface for the operating platform for which the sample programs are written. These examples have not been thoroughly tested under all conditions. IBM, therefore, cannot guarantee or imply reliability, serviceability, or function of these programs. You may copy, modify, and distribute these sample programs in any form without payment to IBM for the purposes of developing, using, marketing, or distributing application programs conforming to IBM's application programming interfaces.

Each copy or any portion of these sample programs or any derivative work, must include a copyright notice as follows:

© (your company name) (year). Portions of this code are derived from IBM Corp. Sample Programs. © Copyright IBM Corp. _enter the year or years_. All rights reserved.

If you are viewing this information softcopy, the photographs and color illustrations may not appear.

For online versions of this book, we authorize you to:

- Copy, modify, and print the documentation contained on the media, for use within your enterprise, provided you reproduce the copyright notice, all warning statements, and other required statements on each copy or partial copy.
- Transfer the original unaltered copy of the documentation when you transfer the related IBM product (which may be either machines you own, or programs, if the program's license terms permit a transfer). You must, at the same time, destroy all other copies of the documentation.

You are responsible for payment of any taxes, including personal property taxes, resulting from this authorization.

Your failure to comply with the terms above terminates this authorization. Upon termination, you must destroy your machine readable documentation.

Trademarks

The following terms, used in this publication, are trademarks or registered trademarks of the IBM Corporation in the United States or other countries or both:

AFP®
AIX®
EtherJet®
IBM®
Infoprint®
OS/400®

Microsoft®, Windows®, and Windows NT® are trademarks of Microsoft Corporation in the United States, other countries, or both.

Other company, product, or service names may be the trademarks or service marks of others.

EuroReady

Infoprint Manager and Infoprint Server are capable of processing data containing the euro sign. Font character sets and code pages that contain and map the euro sign consistently with the application must be present either in a host library or in the printer. AFP™ fonts that support the euro sign are included in the AFP Font Collection (Program Number 5648-B33).

Index

A

- AFP Font collection 51
- AppleTalk network
 - printer name 26, 29
 - zone 26, 29
- AppleTalk protocol
 - installing
 - on Windows 2000 18
 - on Windows NT 10
 - uninstalling
 - from Windows 2000 44
 - from Windows NT 40
- available devices utility 32

C

- configuring DBCS Font Downloader
 - after installation 28
 - at installation 25

D

- DBCS Font Downloader
 - configuration
 - after installation 28
 - at installation 25
 - description 5
 - error messages 37
 - installation
 - on Windows 2000 15
 - on Windows NT 7
 - log files 37
 - prerequisites 5
 - starting 34
 - status indicator 29, 33
 - stopping 33
 - uninstalling 39
 - using 35
- DBCS fonts
 - downloading 35
 - DynaLab 29, 35
 - listing available 31
 - Morisawa CID 29, 35
- default desktop printer 26
- devices, listing available 32
- download indicator
 - enabling 29
 - not visible 33
- downloading fonts 35
- DynaLab fonts 29, 35

E

- errors 37
- euro sign 51
- Event Viewer, Windows 37

F

- files
 - log 37
 - PostScript query 32
 - PPD 27
 - ps2afpd.cfg 26, 29
- fonts
 - AFP Font collection 51
 - downloading 35
 - DynaLab 29, 35
 - euro sign 51
 - listing available 31
 - Morisawa CID 29, 35

H

- halftone settings utility 32
- hardware requirements 5
- host name, Infoprint server 26, 29

I

- icons
 - AppleTalk printer 27
 - on desktop 27
 - on taskbar 29, 33
 - status 29, 33
- indicator, download
 - enabling 29
 - not visible 33
- Infoprint DBCS Font Downloader
 - configuration
 - after installation 28
 - at installation 25
 - description 5
 - error messages 37
 - installation
 - on Windows 2000 15
 - on Windows NT 7
 - log files 37
 - prerequisites 5
 - starting 34
 - status indicator 29, 33
 - stopping 33
 - uninstalling 39
 - using 35
- Infoprint Manager for AIX 5
- Infoprint Manager for Windows 5
- Infoprint PostScript utilities
 - available devices 32
 - halftone settings 32
 - license ID & serial number 32
 - list fonts 31
 - PS language level 32
 - RAM size 32
- Infoprint server
 - devices available on 32
 - fonts available on 31
 - host name 26, 29
 - TCP/IP address 26, 29

- Infoprint Server for OS/400 5
- input file, PostScript query 32
- installing
 - DBCS Font Downloader
 - on Windows 2000 15
 - on Windows NT 7
 - Miramar AppleTalk protocol
 - on Windows 2000 18
 - on Windows NT 10
- interpreter, PostScript
 - half-tone settings 32
 - license ID 32
 - querying 32
 - RAM size 32
 - restarting 36
 - serial number 32

L

- language level, PostScript 32
- LaserWriter printer 26, 29
- license ID & serial number utility 32
- list fonts utility 31
- log files
 - disk space for 38
 - viewing 37

M

- Macintosh operating system
 - configuring DBCS Font Downloader on 26
 - default desktop printer 26
 - downloading fonts from 35
- memory, amount available 32
- Miramar AppleTalk protocol
 - installing
 - on Windows 2000 18
 - on Windows NT 10
 - uninstalling
 - from Windows 2000 44
 - from Windows NT 40
- mode, download
 - for configuration 25
 - for downloading 29
- Morisawa CID fonts 29, 35

N

- notices 49

O

- output file, PostScript query 32

P

- port number, PostScript transform 26, 29
- PostScript interpreter
 - half-tone settings 32
 - license ID 32
 - querying 32
 - RAM size 32
 - restarting 36
 - serial number 32
- PostScript transform 26, 29

- PostScript utilities
 - available devices 32
 - half-tone settings 32
 - license ID & serial number 32
 - list fonts 31
 - PS language level 32
 - RAM size 32
- PPD file 27
- printer
 - AppleTalk name 26, 29
 - DBCS Font Downloader appears as 26, 29
 - default desktop 26
 - LaserWriter 26, 29
- PS language level utility 32
- ps2afpd.cfg file 26, 29

Q

- querying PostScript interpreter 32

R

- RAM size utility 32
- related publications 1
- restarting
 - DBCS Font Downloader 34
 - PostScript interpreter 36

S

- serial number, PostScript interpreter 32
- server, Infoprint
 - devices available on 32
 - fonts available on 31
 - host name 26, 29
 - TCP/IP address 26, 29
- software requirements 5
- starting
 - DBCS Font Downloader 34
 - PostScript interpreter 36
- status indicator
 - enabling 29
 - not visible 33
- stopping DBCS Font Downloader 33
- storage requirements 38

T

- taskbar, indicator on
 - enabling 29
 - not visible 33
- TCP/IP address, Infoprint server 26, 29
- trademarks 51

U

- uninstalling
 - DBCS Font Downloader 39
 - Miramar AppleTalk protocol
 - from Windows 2000 44
 - from Windows NT 40
- utilities, PostScript
 - available devices 32
 - half-tone settings 32
 - license ID & serial number 32

utilities, PostScript *(continued)*

list fonts 31

PS language level 32

RAM size 32

W

Windows operating system

configuring DBCS Font Downloader on
after installation 28

at installation 25

Event Viewer 37

installing DBCS Font Downloader on 7

Z

zone, AppleTalk 26, 29

Readers' Comments — We'd Like to Hear from You

Printing Systems Division
Infoprint DBCS Font Downloader User's Guide

Overall, how satisfied are you with the information in this book?

	Very Satisfied	Satisfied	Neutral	Dissatisfied	Very Dissatisfied
Overall satisfaction	<input type="checkbox"/>	<input type="checkbox"/>	<input type="checkbox"/>	<input type="checkbox"/>	<input type="checkbox"/>

How satisfied are you that the information in this book is:

	Very Satisfied	Satisfied	Neutral	Dissatisfied	Very Dissatisfied
Accurate	<input type="checkbox"/>	<input type="checkbox"/>	<input type="checkbox"/>	<input type="checkbox"/>	<input type="checkbox"/>
Complete	<input type="checkbox"/>	<input type="checkbox"/>	<input type="checkbox"/>	<input type="checkbox"/>	<input type="checkbox"/>
Easy to find	<input type="checkbox"/>	<input type="checkbox"/>	<input type="checkbox"/>	<input type="checkbox"/>	<input type="checkbox"/>
Easy to understand	<input type="checkbox"/>	<input type="checkbox"/>	<input type="checkbox"/>	<input type="checkbox"/>	<input type="checkbox"/>
Well organized	<input type="checkbox"/>	<input type="checkbox"/>	<input type="checkbox"/>	<input type="checkbox"/>	<input type="checkbox"/>
Applicable to your tasks	<input type="checkbox"/>	<input type="checkbox"/>	<input type="checkbox"/>	<input type="checkbox"/>	<input type="checkbox"/>

Please tell us how we can improve this book:

Thank you for your responses. May we contact you? Yes No

When you send comments to IBM, you grant IBM a nonexclusive right to use or distribute your comments in any way it believes appropriate without incurring any obligation to you.

Name

Address

Company or Organization

Phone No.



Fold and Tape

Please do not staple

Fold and Tape



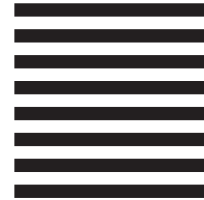
NO POSTAGE
NECESSARY
IF MAILED IN THE
UNITED STATES

BUSINESS REPLY MAIL

FIRST-CLASS MAIL PERMIT NO. 40 ARMONK, NEW YORK

POSTAGE WILL BE PAID BY ADDRESSEE

IBM Corporation
IBM Printing Systems Division
Department H7FE, Building 004M
Information Development
P.O. Box 1900
Boulder, CO USA 80301-9817



Fold and Tape

Please do not staple

Fold and Tape



Program Number: 5639-N49
5722-IP1
5765-F68

Printed in U.S.A.