

Using the Infoprint Manager Operations GUI

The Infoprint Manager Operations GUI is an operator interface for working with Infoprint jobs and actual destinations such as printers. It runs on multiple platforms so you can use it from a workstation or directly on an Infoprint Manager server console. This chapter describes the following:

- [Tasks You Can Do with the Infoprint Manager Operations GUI](#)
- [The Three Views of the Infoprint Manager Operations GUI](#)
- [Starting the Infoprint Manager Operations GUI from a Workstation](#)
- [Starting the Infoprint Manager Operations GUI from the AIX Desktop in a Basic Environment](#)
- [Starting the Infoprint Manager Operations GUI from the AIX Desktop in an Advanced Environment](#)
- [Starting the Infoprint Manager Operations GUI from the AIX Command Line](#)

Tasks You Can Do with the Infoprint Manager Operations GUI

You can use the Infoprint Manager Operations GUI to perform a wide range of printer operator tasks. From the server or from remote work stations, operators can use this interface to monitor all jobs and printers in the system and to route jobs appropriately to increase enterprise wide printing productivity. With the GUI, you can:

- Support 100s of jobs and printers
- Customise your view of jobs and printers
- Check printer status
- Recover from printer errors
- Change media ready on the printer
- Enable/disable the printer

- Show SNMP printer status
- Check job status
- Recover from job errors
- Resubmit retained jobs
- Hold/release job, move job, search for job, and retain job
- Refresh job view automatically
- Change media for a job
- Change media supported by printer
- Space printer
- Change separator sheet
- Enable/disable all printers in server
- Stop/resume printer

For details supporting the listed tasks, use the online help that is available with the application.

[The Three Views of the Infoprint Manager Operations GUI](#)

The Infoprint Manager Operations GUI offers three different views: basic, advanced, and distributed. Although you can display any view, each one is most suitable for a particular situation.

Use the basic view if your Infoprint server is configured to support:

- Print on Demand (commercial) printing
- Assignment of jobs to actual destinations when they are submitted
- PostScript, TIFF, and variable data jobs
- Jobs submitted from Infoprint Submit or Infoprint Scan

Use the advanced view if your Infoprint server is configured to support:

- Data center (production) printing
- Printer pooling for workload ballancing
- Jobs submitted from the command line, from workstation applications through Infoprint Select, or from other application programs

Use the distributed view if you are a customer service representative at a help desk who needs to locate jobs and assist customers.

[Starting the Infoprint Manager Operations GUI from a Workstation](#)

To open the Infoprint Manager Operations GUI from Microsoft Windows '95, '98, NT and Windows 2000, select one of the following Infoprint icons:

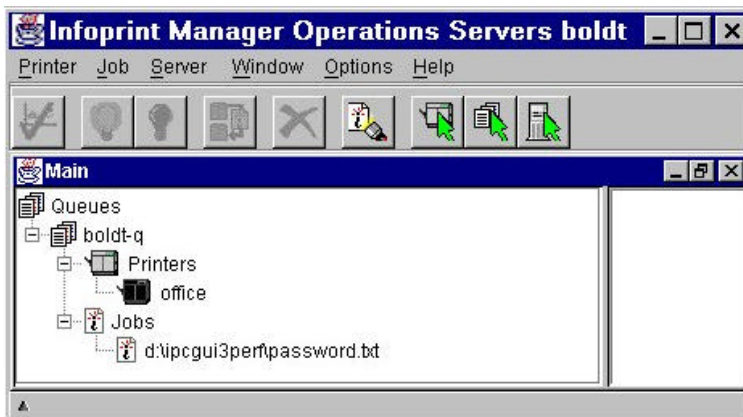
Select the **Basic Operations Infoprint** icon to open a view similar to the following:



Select the **Advanced Operations Infoprint** icon to open a view similar to the following:



Select the **Distributed Operations Infoprint** icon to open a view similar to the following:



[Starting the Infoprint Manager Operations GUI from the AIX Desktop in a Basic Environment](#)

Note: If the Infoprint icon does not appear of the front panel of the desktop, you have an advanced environment. See "Starting the Infoprint Manager Operations GUI from the AIX Desktop in an Advanced Environment." Also, refer to this procedure if you have Infoprint on your front panel, but you want an advanced or distributed Operations GUI.

To start a view of the Infoprint Manager Operations GUI from the AIX desktop in a basic environment:

1. Select the arrow over the **Infoprint** icon to display the IBM Infoprint popup.
2. Select the Operations GUI view of your choice (basic, advanced, or distributed).

[Starting the Infoprint Manager Operations GUI from the AIX Desktop in an Advanced Environment](#)

Note: If the Infoprint icon appears on the front panel of the desktop, you have a basic environment. See "Starting the Infoprint Manager Operations GUI from the AIX Desktop in a Basic Environment."

To start a view of the Infoprint Manager Operations GUI from the AIX desktop in an advanced environment:

1. Click the **Application Manager** icon, which looks like an open drawer with a calculator, to open the Application Manager window. Among the application icons, there is a folder for the Infoprint application group.
2. Double-click the **Infoprint** folder to open the Infoprint Application Group window.
3. Double-click the icon for the Operations GUI view of your choice (advanced or distributed).

[Starting the Infoprint Manager Operations GUI from the AIX Command Line](#)

You can start the Infoprint Manager Operations GUI from an aixterm window.

To open a basic view, enter:

```
ipguibasic
```

To open an advanced view, enter:

```
ipguiadv
```

To open a distributed view, enter:

```
ipguidist
```