

*A scalable software solution to manage and deliver information in a connected world.*



# IBM Infoprint Manager for AIX Version 3.2

---

## Highlights

---

**Provides secure scalable enterprise printing support**

**Provides reliability and high-volume print support for mission-critical applications such as ERP**

**Manages and delivers output to printers, fax machines and e-mail**

**Interoperates fully with Infoprint Manager for Windows NT and Windows 95/98**

**Supports grayscale scanning to enhance the quality of photographic images**

**Includes an improved operator interface that allows users to view only the printers, queues and servers they manage**

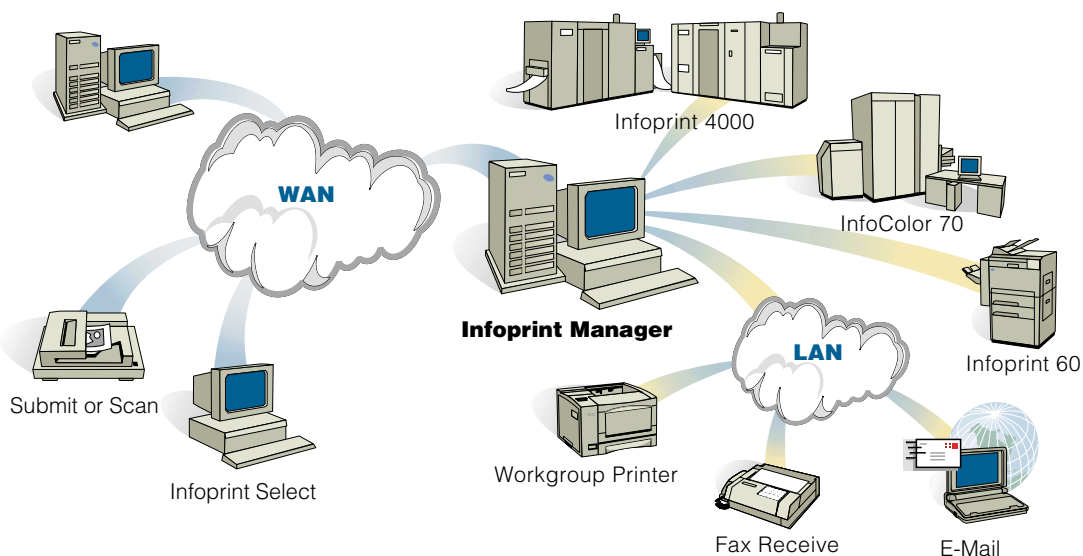
IBM® Infoprint® Manager for AIX® is a comprehensive software solution for managing digital printing output. It combines award-winning print management technology with enhanced file management and spooling capabilities to address the requirements of a variety of print environments. Combining superior print technology with built-in Advanced Function Presentation™ (AFP™) and Adobe® PostScript® support, Infoprint Manager can deliver production-volume, single-copy integrity with PostScript graphics quality.

The solution interoperates with multiple operating systems and accepts diverse file types to be managed, printed, stored and reprinted quickly and efficiently. A single Infoprint Manager server can manage from one to thousands of printers.

## Enterprise production printing

Enterprise printing environments can benefit from Infoprint Manager's innovative print management technology that is designed to increase efficiency. IBM's Print Services Facility™ (PSF™) for AIX, a rich set of print-stream transforms; key components of the Printing Systems Manager (PSM) for AIX; and the AFP Font Collection have been integrated into a single comprehensive print solution. This system combines reliable queue and job management with comprehensive PSF print and job control to protect data integrity, so documents can be printed completely and accurately the first time.

The Infoprint Manager for AIX solution delivers reliable, easy-to-use print management from an AIX system, Microsoft® Windows® NT® or Windows client systems. Infoprint Manager supports traditional enterprise



## *IBM's 24 x 7 customer service ensures reliable print operations around the clock.*

application output, AFP, PostScript or many of the popular image file formats, including GIF, JPEG or TIFF. The solution also offers enhanced PostScript functionality by providing a server-based, Adobe PostScript RIP.

### **Enterprise distributed printing**

Distributed printing environments can utilize Infoprint Manager's automated job scheduling, accounting and tracking. Users can also benefit from efficiently printing multiple copies within their applications and submitting print jobs into the queue directly from the application, eliminating time-consuming steps in the process. Leveraging the capabilities of a scalable, server-based print management application, Infoprint Manager can help reduce printing costs by automating vital functions, simplifying user operation and facilitating electronic storage and reprinting.

### **Digital print-on-demand printing**

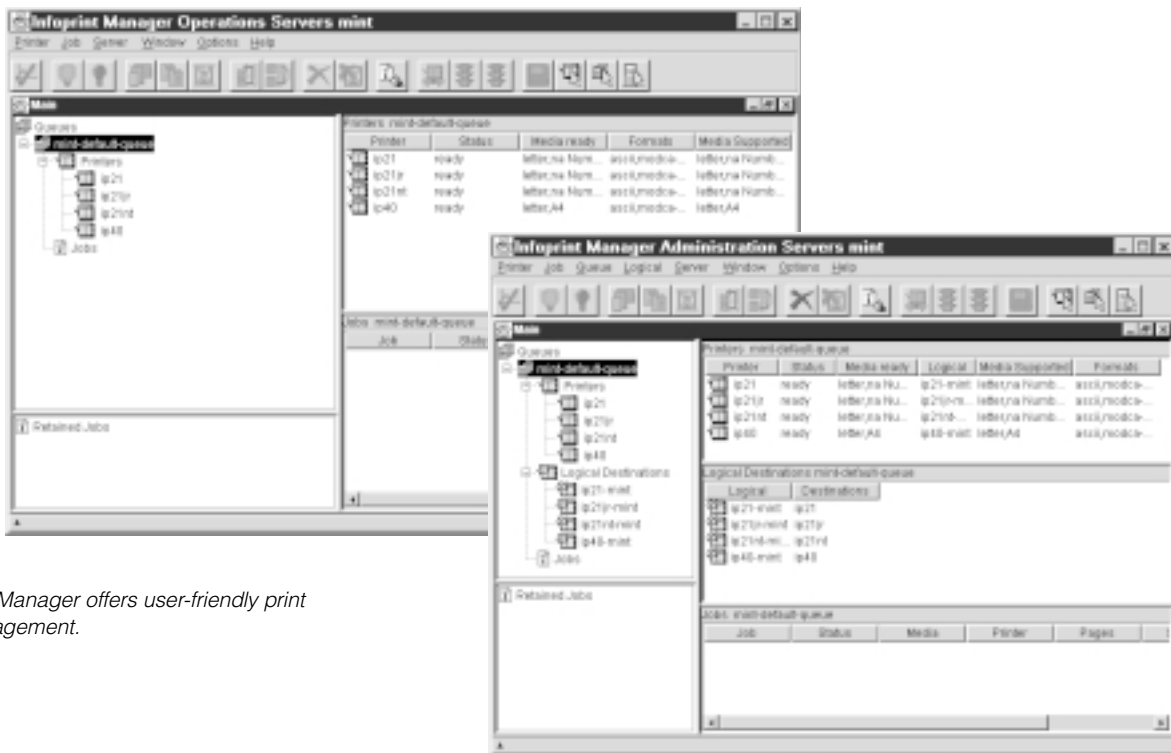
Infoprint Manager includes the tools needed for print-on-demand (POD) print providers to grow their business. Infoprint Manager helps manage an entire digital print shop from file submission to final print, and can provide superior print quality and performance with Adobe PostScript Level 3 support.

Infoprint Manager provides commercial printers with the single-copy integrity needed to meet emerging short-run and variable-data printing needs, while allowing them to use existing processes and tools. The software's easy-to-use, point-and-click user interface enables operators to manage printers and to print files from a single server from AIX, Windows NT or Windows clients.

With the help of Infoprint Manager's comprehensive digital system, POD printers can meet their customers' expectations for quick turnarounds. For example, included with Infoprint Manager is a set of Windows and Macintosh applications designed for receiving print files in commonly used formats. The applications allow scanning of hard copy documents and assembling, archiving, or submitting of jobs for just-in-time printing. The solution also enables users to view PostScript documents using the Adobe Acrobat® viewer and the server-based Adobe Acrobat Distiller.

### **Value-added features**

Infoprint Manager is rich in features that allow users to more effectively manage their printing environment. Centralized Output Management lets print managers configure, manage and monitor job output from a wide range of clients, from anywhere in the enterprise.



*Infoprint Manager offers user-friendly print job management.*

The newly enhanced Java®-based GUI provides better performance in environments with many jobs or printers. The GUI is customizable, including a filtration capability so users can restrict their views to the subset of system queues, printers and servers that they need to use.

Hard Copy Scanning leverages the value of existing documents by enabling users to scan, enhance, print and save scans as PDF files for distribution over the Web.

The Scanner Client option allows Infoprint Scan to change half-toned, black-and-white images into continuous-tone, grayscale images. This new option optimizes the production scanning of black-and-white, half-toned images with digital print quality and device independence. Infoprint Manager provides scalability across a wide range of output devices through separation of libraries of scanned documents that aren't dependent on specific output devices.

The solution's variable data features allow the creation of effective personalized documents combining database information with graphic images and customized text.

### **Comprehensive services**

IBM makes available on-site installation and education to help ensure that you will have an integrated system with a fully trained operating staff. In addition, IBM offers a full range of services from hardware maintenance to software support, all accessible 24 hours a day, 7 days a week, 365 days a year.

---

## **IBM Infoprint Manager at a glance**

---

### **Features**

|                               |   |
|-------------------------------|---|
| Centralized Output Management | —Configure, manage and monitor from remote locations<br>—Job Submission and Print Management Applications<br>—Submit jobs from a range of platforms |
| Hard Copy Scanning            | —Take advantage of the IBM Infoprint Scan integrated solution, which combines hardware and software in a single system                              |
| Variable Data                 | —Use current publishing applications: QuarkXPress™ or PageMaker   |

---

### **Optional Features**

|                                   |  |
|-----------------------------------|--|
| Fax and E-mail                    | —Send and receive fax data from anywhere in the world<br>—E-mail printed or application documents to your customers quickly and easily |
| Scalability and Security SAP R/3  | —Robust, network-wide security (using optional DCE)<br>—Robust integration of SAP R/3 and Infoprint Manager                            |
| Infoprint ManagerPlus for Tivoli® | —Control your Infoprint Manager system from the Tivoli Desktop   |
| Information Storage and Retrieval | —Allows sharing of documents across users, organizations and locations   |
| Adobe PostScript Extreme          | —Users can simultaneously rip and print PostScript and PDF print files on their high-speed production printers                         |
| Infoprint Manager for the Web     | —Use IBM Infoprint Manager functions from a Web-based interface  |

---

---

## IBM Infoprint Manager at a glance (con't)

---

### Hardware Requirements

|                   |  |
|-------------------|--|
| Infoprint Manager | — IBM RS/6000 with AIX operating system 4.21 or 4.3<br>— Use of AIX windows required for graphical environment<br>— TCP/IP printer connection (Token-Ring, Ethernet, FDDI) |
| Infoprint Select  | — PC with OS/2®, Microsoft Windows 3.1, Windows 95/98, and 2000 or Windows NT version 4.0 and TCP/IP LAN connection  |
| Infoprint Submit  | — PC with Windows 95/98, Windows NT version 4.0 and TCP/IP LAN connection or Macintosh PowerPC computer with System 7.61 and TCP/IP LAN connection                         |
| Infoprint Scan    | — Personal computer with Microsoft Windows 95  |
| Infoprint Library | — IBM RS/6000 with AIX operating system 4.21 or 4.3  |

---

### Printer Data Stream Support

IPDS, AFPDS, PostScript (Level 2 and 3), PDF, GIF, TIFF, JPEG and ASCII

---

### Fonts

Support for single and double byte fonts in AFP and PostScript Type 1, Type 3 and Multiple Master; Includes AFP Font Collection and Standard 11 Adobe PostScript font families

---

### Additional Information

The following publications are available for Infoprint Manager standard and optional features:

|                                     |           |
|-------------------------------------|-----------|
| — Centralized Output Management     | G544-5607 |
| — Submitting and Managing Jobs      | G544-5652 |
| — Hard Copy Scanning                | G544-5605 |
| — Variable Data                     | G544-5657 |
| — Fax and E-Mail                    | G544-5656 |
| — Scalability and Security          | G544-5655 |
| — SAP R/3                           | G544-5653 |
| — Information Storage and Retrieval | G544-5606 |
| — Infoprint Manager for the Web     | G544-5608 |
| — Infoprint ManagerPlus for Tivoli  | G544-5654 |



For more information on the implications of the euro, visit the IBM euro Web Site at [ibm.com/euro](http://ibm.com/euro). The following terms are trademarks of IBM Corporation in the United States and/or other countries: Advanced Function Presentation, AFP, AIX, IBM, InfoColor, Infoprint, Print Services Facility, OS/2, PSF, RISC System/6000 and RS/6000.

Tivoli is registered trademark of Tivoli Systems, Inc.

Java is a trademark of Sun Microsystems, Inc.

Microsoft, Windows, and Windows NT are registered trademarks of Microsoft Corporation.

Adobe and PostScript are registered trademarks of Adobe Systems Incorporated.

QuarkXPress is a trademark of Quark, Inc.

Other company, product and service names may be trademarks or service marks of others.

© International Business Machines Corporation 2000

IBM Printing Systems  
P.O. Box 1900  
Boulder, CO 80301-9191

Printed in the United States of America  
5-00  
All Rights Reserved

References in this publication to IBM products or services do not imply that IBM intends to make them available outside the United States.

Visit our home page at  
[ibm.com/printers](http://ibm.com/printers)