



IBM Software Group

# 2004 WDI / WBIC Customer Conference

*Global Business Transformation*

## Adventures in Migration

*Bettyann Johnsen, MetLife*

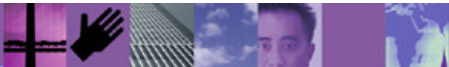
**WebSphere.** software



 e-business software

# MetLife®

- #1 U.S. Life Insurer - \$2.5 trillion of life insurance in-force
- Largest non-medical health provider of institutional employee benefits
- 37 million lives under group benefits
- Ranked #1 in most group product areas - life, auto and homeowners, and long-term care
- Customers -
  - U.S. - 13 million households
  - International - 8 million customers in 11 locations
- Listed on NYSE - April 2000
- MetLife is in 1 out of every 5 households in the U.S.



# MetLife<sup>®</sup>

- Products and Services offered by MetLife and its affiliates include:
  - Insurance (Life, Long-Term Care, Disability, Dental, Auto & Homeowners)
  - Annuities
  - Individual bank products

## My Objectives for the WDI 3.2 Migration

- Ultimately, to survive yet another migration...
- Create Lab environment for system testing
- Provide stable test and production environments for end users
- Convert existing data objects to WDI 3.2 for immediate use by end users...

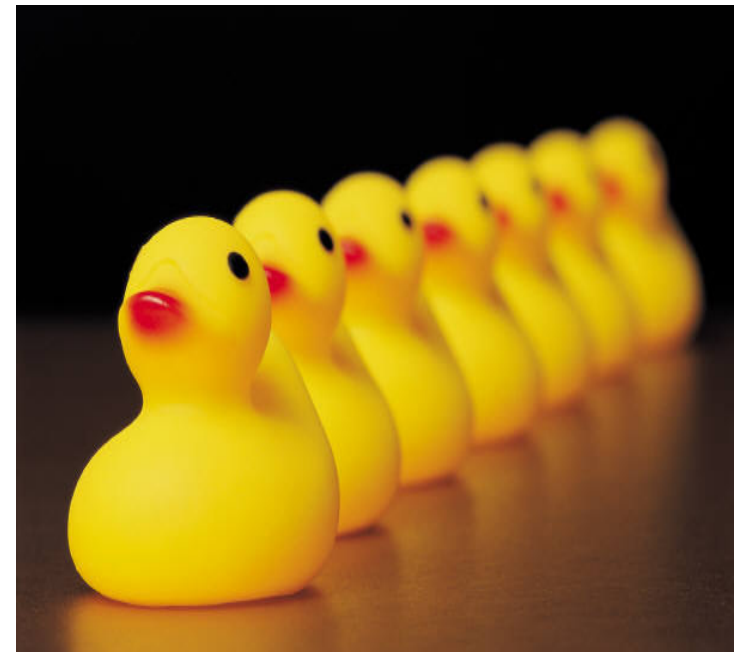
# Know Your Environment



- Why upgrade?
  - EOS 12/31/04 - No other reason needed!
  - Any-to-any translation
  - Ease of use
- Where we started from
  - DI 3.1 on z/OS 1.2 - Host Only
  - DB2 Connect v7.2 for Client availability - however, not used
- Where we are today
  - WDI 3.2 on z/OS 1.4
  - DB2 Connect v8.1

## Create a Migration Plan

- MVS upgrade to z/OS 1.4
- DB2 Connect upgrade to v8.1
- Application of all current RSU Maintenance
- Installation of multiple Fixpacks
- Documentation for end users



## MVS upgrade to z/OS 1.4



- Timing is everything...
- Created WDI 3.2 on Lab environment and then re-ipl'd operating system between z/OS 1.2 and z/OS 1.4
- Test, test and then test again!

## Middleware: Upgrade to DB2 Connect Version 8.1



- Running on dedicated LPAR IBM P690 Regatta servers
- Matching pairs of servers configured for test and production.
- Primary server onsite with secondary server failover offsite
- Global Site Selector used for automated geographic failover for outages on primary server - greater “up” time
- Real time updating to the host in client-server mode via ODBC link
- Ideal for multi-user environment with concurrent users



## Application of RSU Maintenance

- Important! Do not neglect regular maintenance while completing the installation and migration to a new system.
- Applied maintenance across operating systems, DB2 sub-systems and LPAR's



## Installation of Multiple Fixpacks

- Understand the difference between CSDs, Fixpacks, APARs and PTFs.....
- Get used to installing...it builds confidence!

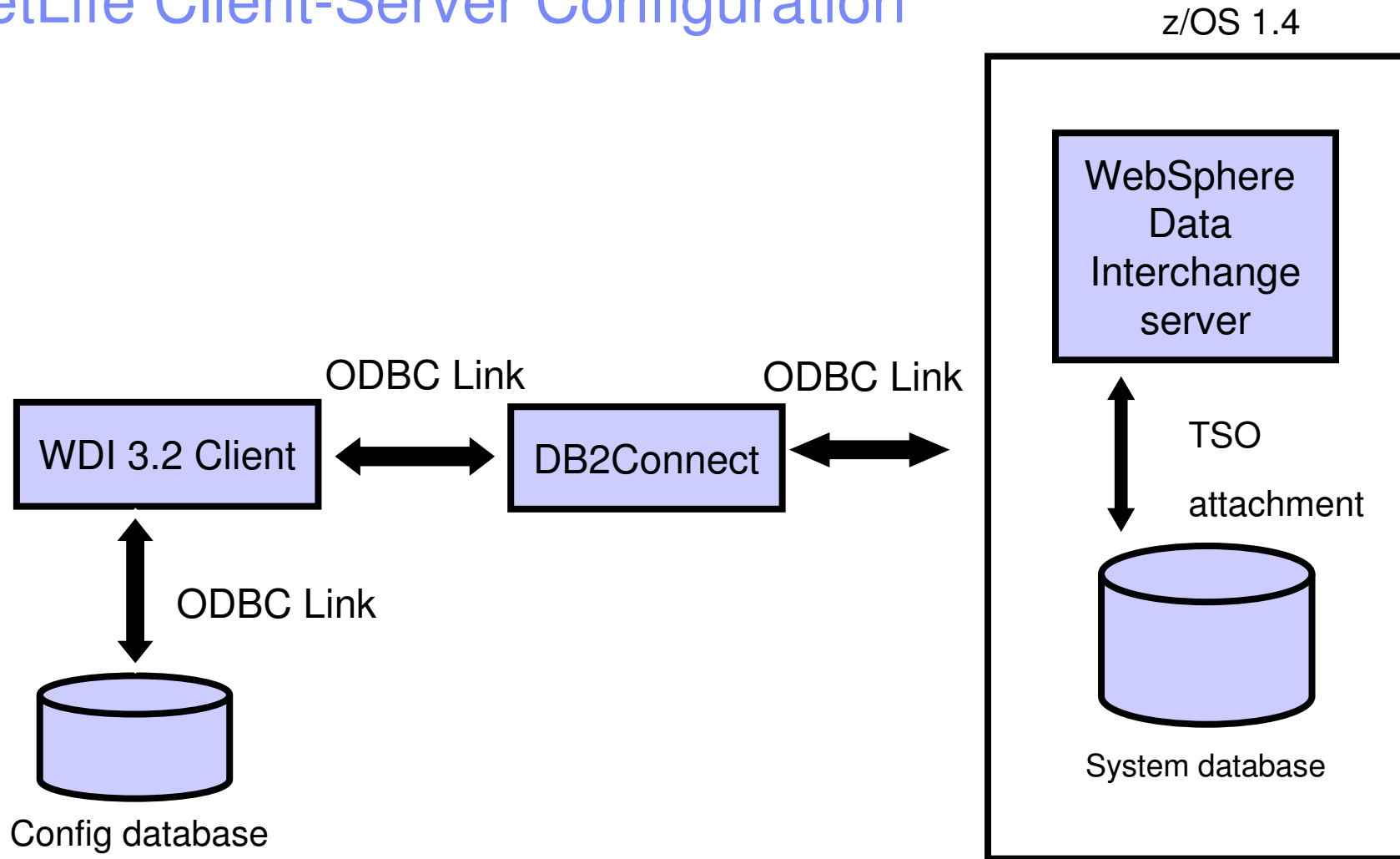


## Documentation for End Users



- Created share drive for end users/site support to access software, Fixpack's and manuals
- Provided installation instructions specific to MetLife
  - WDI 3.2
  - DB2 Connect v8.1
  - Defining multiple systems within WDI 3.2

# MetLife Client-Server Configuration



## Assess Your Data

- Requested end user review of individual projects
- Only migrate data objects currently in use



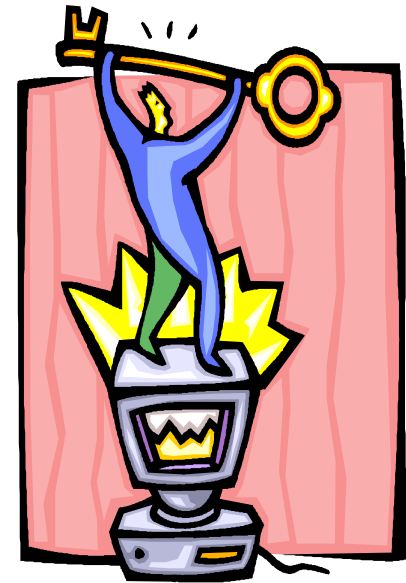
## Common WDI 3.2 Pitfalls



- Conversion/migration job is lengthy
  - had to run job multiple times in lab environment due to “loose ends”
  - learning experience for test and production...
- Only convert the standards in use prior to X12 4.1 - otherwise use client format download from the web

# Survival is Key!

- Even the best laid plans can fail...
- Plan B is essential
- Go with the flow



## Provide Support As Needed



- Greater data validation in WDI 3.2
  - Some maps were converted but did not compile cleanly
  - Worked through missing mandatory segments
- End users required to make changes in two test systems for the time being - to keep systems in sync
  - DI 3.1 Host
  - WDI 3.2 Client



## Summary



- I have survived! So far....
- Lab environment exists for system testing
- End users have a stable test environment
- Migration testing continues
- Conversion/migration job for production should be a breeze!

# Adventures in Migration

Bettyann Johnsen



[bjohnsen@metlife.com](mailto:bjohnsen@metlife.com)