



IBM Software Group

## 2006 B2B Customer Conference

*Pioneering New Horizons – Solutions that Evolve*

# WDI 3.2 Enhancements & Maintenance

**WebSphere.** software



**ON DEMAND BUSINESS™**



## Objectives

- Determine the appropriate maintenance vehicle given your platform
- Define the acronyms related to WDI maintenance
- Discuss the options for deploying WDI maintenance
- Locate the resources required to identify WDI maintenance
- List the major WDI 3.2 enhancements released in 2006



# WDI Clients & Servers

## WDI Clients



Windows 2000

Windows XP

## WDI Servers

AIX

z/OS

Windows XP

Windows 2000





## Acronyms Related To WDI Maintenance

- PMR: Problem Management Record

*f* A record of the customer's product issue

- APAR: Authorized Program Analysis Report

*f* Formal report to IBM Development of a problem caused by a suspected defect

*f* Created as the result of the initial PMR

- Fix Pack: A cumulative collection of all **client** updates & fixes





## Acronyms Related To WDI Maintenance (Contd.)

- CSD: Corrective Service Delivery

*f* A cumulative collection of all **Windows & AIX server** updates & fixes

- PTF: Programming Temporary Fix

*f* Individual **Mainframe server** updates & fixes





## WDI Maintenance

- WDI maintenance deployment is dependent upon your environment
- Server Maintenance
  - f* z/OS – Programming Temporary Fix (PTF)
  - f* AIX/W2K/XP – Corrective Service Delivery (CSD)
- Client Maintenance
  - f* W2K/XP - FixPack



# Fix Packs, CSD, & PTF Deployment

## WDI Clients



Windows XP  
Windows 2000

## WDI Servers

PTF

z/OS

CSD

AIX

Windows XP

Windows 2000



# Highlights

## ■ CSDs

*f* CSDs are cumulative

*f* WDI can only be upgraded to newer CSDs

*f* Refer to the README file for instructions to figure out the current CSD installed

*f* CSD specific database upgrades are NOT cumulative, unless a new database is created







## Highlights (Contd.)

### ■ Fix Packs

*f* Fix Packs are cumulative

*f* Client enhancements usually require the installation of corresponding SERVER maintenance

### PPTFs

*f* Prerequisite PTFs need to be installed

*f* Any hold actions need to be executed

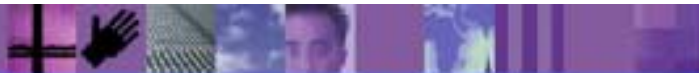




## Resources

- The README file
- WDI website for the latest updates  
[www.ibm.com/websphere/datainterchange](http://www.ibm.com/websphere/datainterchange)
- IBM Support websites  
[www.ibm.com/software/support](http://www.ibm.com/software/support)  
[www.ibm.com/support/us](http://www.ibm.com/support/us)

**Note:** Refer to URL on next page for detailed description about resources & enhancements through 2005.





# Resources Continued

Address <http://www.ibm.com/websphere/datainterchange> Norton AntiVirus

Software > Business Integration >

## WebSphere Data Interchange

WebSphere software

- WebSphere Data Interchange
- Features and benefits
- System requirements
- Library
- News
- How to buy
- Events
- Training and certification
- Services
- Support

### Related software

- WebSphere Message Broker
- WebSphere Partner Gateway
- Information Management

### Related hardware

- IBM System z™

### Related services

- Application Connectivity services
- IBM Global Services

### Overview

- WebSphere® Data Interchange V3.2 integrates electronic data interchange (EDI) into the WebSphere business process, messaging, and Internet-based B2B capabilities
- Supports optimized "any-to-any" transformation of EDI, XML, and record-oriented application data formats
- Introduces advanced data validation and standards compliance function to provide industry-leading support for HIPAA, ANSI X12 embedded HL7, and other industry formats
- Allows direct import of industry-standard or user-defined XML DTDs for

### Editions

- Version 3.2 for z/OS
- Version 3.2 for Multiplatforms

### View prices and buy

- ➔ [View pricing](#)
- ➔ [Buy online](#)

See Maura Grady's 2005 Conference session A2: "WDI Enhancements and Maintenance" for highlights through 2005.

### We're here to help



Easy ways to get the answers you need.

- [Call me now](#)
- [E-mail us](#)

or call us at  
**877-426-3774**  
Priority code:  
**104CBW63**

### Highlights

- [WebSphere Data Interchange news](#)
- [2005 Customer Conference -](#)



## WDI 3.2 Enhancements

### ■ CSD21

#### *f* Business ID's

- Multiple ways to identify a trading partner
- Maps identifier in the document to trading partner

#### *f* Parse XML input file directly

- Saves the amount of memory used by WDI
- Useful while translating large XML documents
- Used with the keyword `PARSEFILE(Y)`
- Only one XML document per file allowed





# Business IDs

WebSphere Data Interchange for Multiplatforms V3.2.1 - Local DB2 - Trading Partner Profile - DIU06

File Actions Edit Navigate View Window Help

System Local DB2

Local DB2 - Data Transformation Map - WDICONFLB2\_S850S

Local DB2 - Trading Partner Profile - DIU06

General Company Information Contacts **Business IDs** EDI Options WDI Processing Options User Fields Comments

New Open View Delete

Internal Trading Partner ID	Interchange Qualifier	Interchange ID	Syntax Type	Dictionary Name	Document Name	Description
DIU06			Data Format	WDILAB1_DICTIONARY	WDILAB1	

Ready

## WDI 3.2 Enhancements

### ■ CSD21 (Contd.)

#### *f* Paging WDI translation output

- Less memory used for output buffers
- Output paged at threshold size
- PAGE(Y) Keyword on perform causes paging
- EDIWORK holds temporary paged output
- Applies to ADF, EDI and XML output

#### *f* Unicode Encoding for Application Data Formats

- Ability to specify encoding information in PERFORM command and in WMQ header
- Available only in multiplatform environments





## Enhancements WDI 3.2

### ■ Fix Pack 17

- f* Import/Export capability added to queries
- f* Support LAN based install and shared configuration database
- f* General Client usability improvements
  - Event log viewer fields resized fields and read only fields allowed to be copied to the clipboard
  - Map Rules and usages updated to use descriptive values instead of cryptic codes
  - Continuous receive profile editor updated with more descriptive names



## WDI 3.2 Enhancements

### ■ CSD22

*f* Allow text delimiter and qualifier in ADF data

- ADF data is either fixed length or delimited data
- A variety of field delimiters are allowed in ADF
- Text qualifiers can be either double quotes or single quote or None



## Enhancements WDI 3.2

### ■ Fix Pack 18

*f* CSD22 required for complete function

*f* Data Formats General Tab updated to allow various delimiters and text qualifier

- Option to indicate if the ADF is fixed or delimited data type
- Radio buttons to identify the field delimiter as comma, tab, semicolon or any user defined character
- Choice to pick text qualifier as double quotes or single quote or None





## WDI 3.2 Enhancements

- CSD23

- f* Ancillary problems fixed

- Fix Pack 19

- f* Modified the standard transaction short report

- f* Ancillary problems fixed





## Summary

- Fix Packs apply to all clients
- CSD's apply to open platform servers
- PTF's apply to mainframe servers
- Utilize websites to check problems and locate PTF's
- Enhancements and fixes are documented on the WDI website

**\*\* Attend B9:Implement/understand Business IDs for further discussion on using Business IDs**

