



IBM Software Group

IBM WebSphere® Data Interchange V3.3

Using Client Release Migration



@business on demand.

© 2007 IBM Corporation

This presentation will review the WebSphere Data Interchange Version 3.3 Client Release Migration.

Agenda

- Overview
- Considerations
- Exporting data out
- Importing migrated data
- Reference



The presentation will give an overview of the Client Release Migration function, review some considerations before performing a migration and describe the release migration process.

Overview

- Performs 2 functions
 - Export data out of Client
 - Import data into Client



Release Migration performs two distinct functions. Exports data out of WebSphere Data Interchange Client. Imports data into WebSphere Data Interchange Client.

Overview

- Migrating data between Client versions and releases
- Backup/Restore
- Copy Data between systems
- Will not migrate Version 3.1 host
 - Maps
 - Standards
 - Application Data Formats
 - z/OS install will convert to the correct format



Release Migration is a feature that allows you to copy data from or to WebSphere Data Interchange Client. It is often used to copy data from one release of WebSphere Data Interchange Client to another. It can also be used to back up and restore data or to copy all data from one System to another. Data that can be copied in and out of WebSphere Data Interchange Client using Release Migration includes:

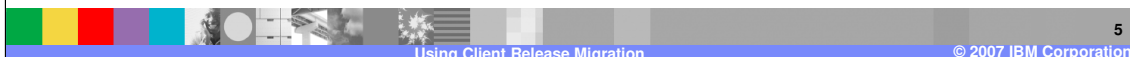
- The contents of the Configuration database.
- All data contained in a System.

Use the WebSphere Data Interchange Client Release Migration function to migrate data from an earlier version of DataInterchange or WebSphere Data Interchange Client to WebSphere Data Interchange Client 3.2. If you are currently using an earlier version of DataInterchange or WebSphere Data Interchange Client, you must perform the release migration to move the data to WebSphere Data Interchange Client 3.3.

Release Migration will not move DataInterchange 3.1 Host format maps, EDI standards, and data formats. You must import these in Host 3.2. Refer to the migration information in *WebSphere Data Interchange for z/OS Installation Guide*.

Considerations

- DBA for shared databases
- Individual for stand-alone databases
- Migrate runtime data residing on the host using the host installation process
- Migrate runtime data not residing on the host using the release migration
- Migrate customization time data using only Client
- Migrate configuration data
 - save custom queries, reports, or system data
- Release Migration is uses unique data structures
 - Not the same as export/import functions.



When planning your release migration, consider the following:

1. A database administrator should perform the release migration for shared databases.
2. An individual user can perform the release migration for a stand-alone database configuration.
3. Migrate runtime data that is contained on the host as part of the WebSphere Data Interchange Version 3.2 Host installation process. Runtime data not contained on the host can be migrated using the WebSphere Data Interchange Client release migration procedure.
4. Migrate customization time data using only WebSphere Data Interchange Client.
5. Migrate configuration data only if you want to save custom queries, reports, or system data. If configuration data is migrated, the system data moves from the earlier version of DataInterchange to WebSphere Data Interchange Client 3.2. The first time you use WebSphere Data Interchange Client 3.2 after migrating configuration data, you must edit the system data and adjust Data Source Names and Qualifiers as needed to reflect WebSphere Data Interchange 3.2 databases.

The WebSphere Data Interchange Client Release Migration option uses unique data structures from the regular WebSphere Data Interchange export and import formats, and should not be intermixed with that capability. To use the import capability, the data must have been exported from WebSphere Data Interchange Client using WebSphere Data Interchange Client Release Migration option.

Considerations

- Overwrite default load data
- Can recover default load data
 - From the installation samples directory V3.2
 - From the EIF directory V3.3
 - Use Import to recover these
- Review your systems definitions to ensure the settings are correct, especially data source names.



When you migrate data from a previous release, you might overwrite some of the default load data that comes with WebSphere Data Interchange 3.2. You can recover some of the default load data using individual import files that are installed in the **samples** directory for version 3.2 or the EIF directory for version 3.3 with the WebSphere Data Interchange server. The import files that may be included are:

appdef,.eif - Application defaults profiles

envstd.eif - Envelope standards

famaps.eif - Functional acknowledgement maps

netprof.eif - Network profiles

sampmap.eif - Sample map for install verification and API example

servprof.eif - Service profiles

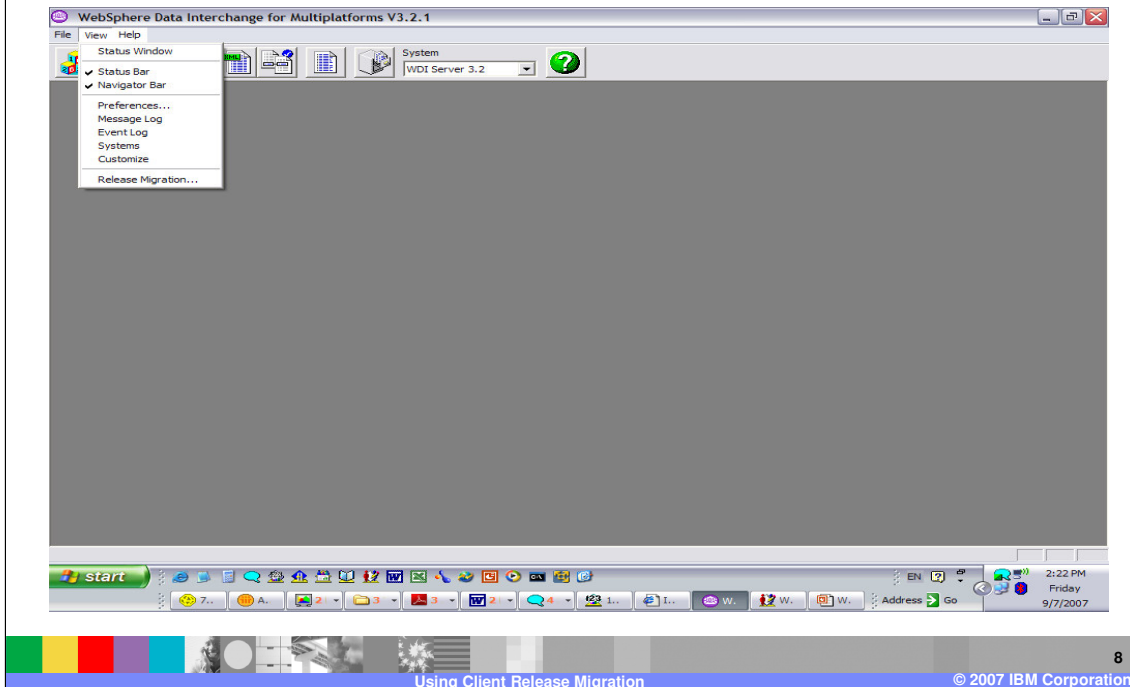
tradpart.eif - Trading partner profiles (ANY trading partner)

After you import configuration data, you should review your systems definitions to ensure the settings are correct, especially data source names.

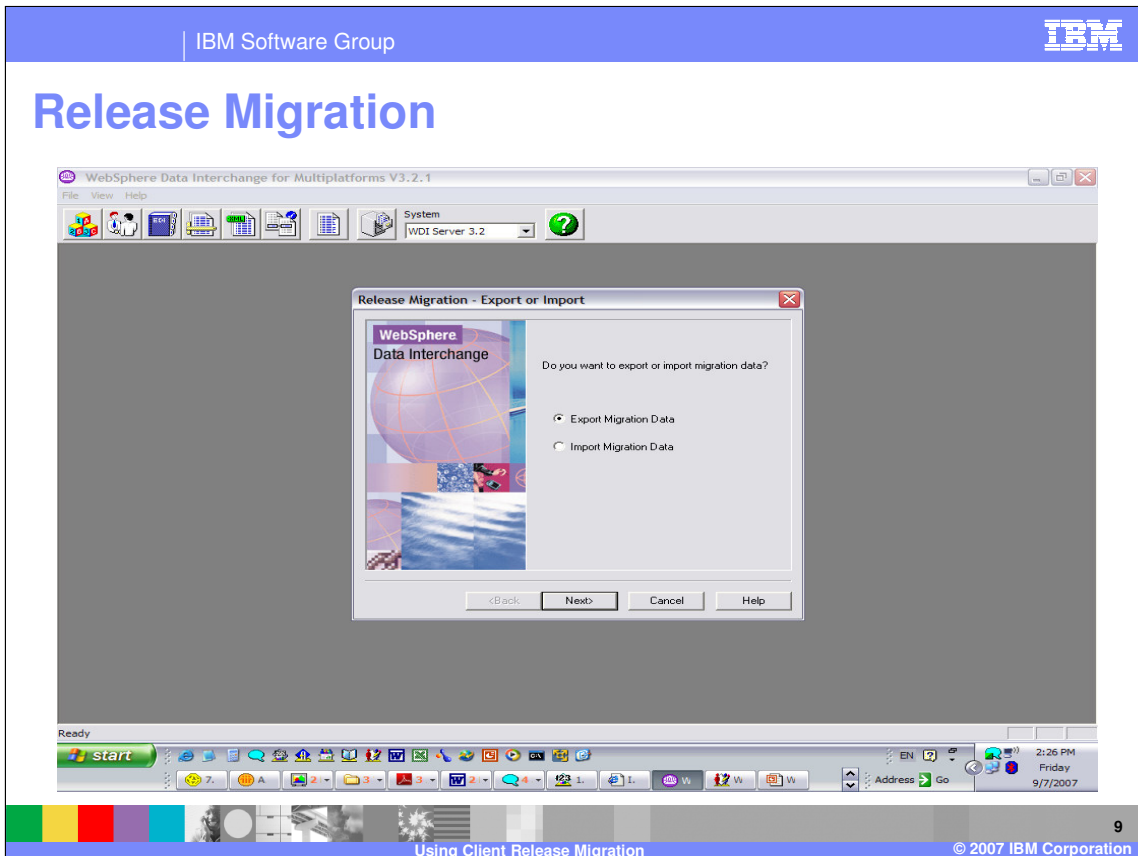
Section

Exporting Data Out

Release Migration

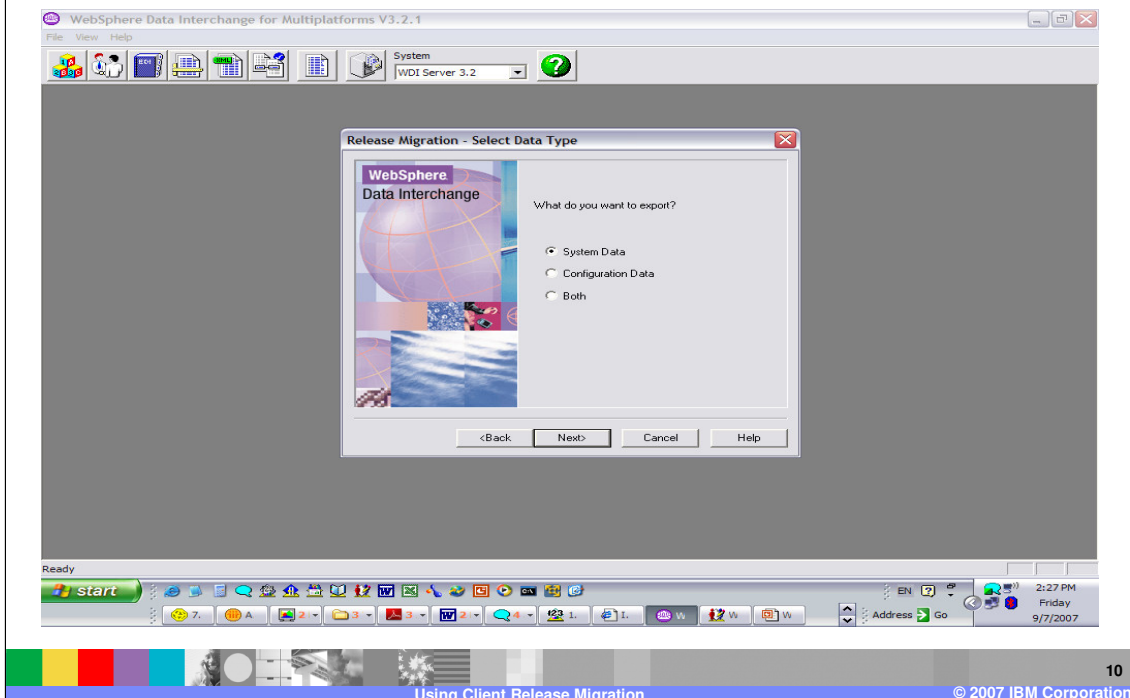


To perform a release migration, select Release Migration from the View menu. All list windows within WebSphere Data Interchange Client must be closed.

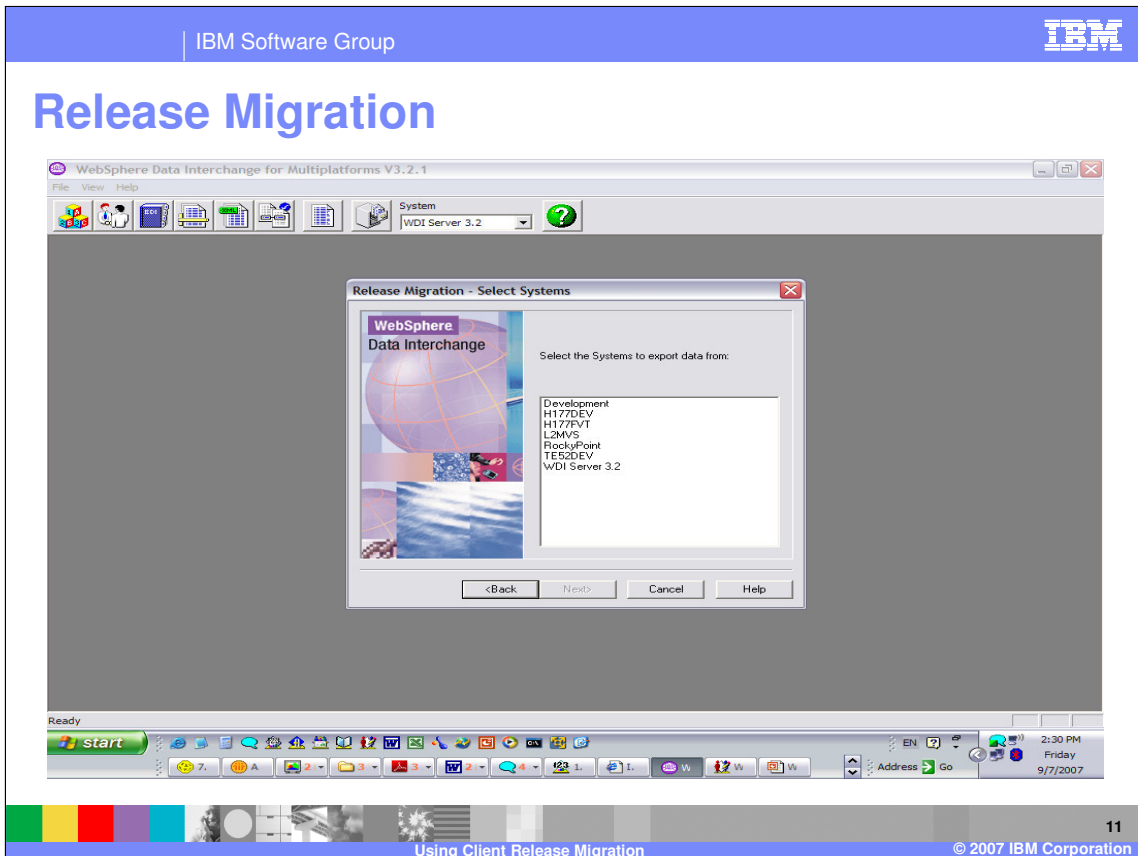


The Release Migration wizard displays. Select Export to create a set of files with data from Systems associated with the WebSphere Data Interchange Client you are using, and then click **Next**.

Release Migration

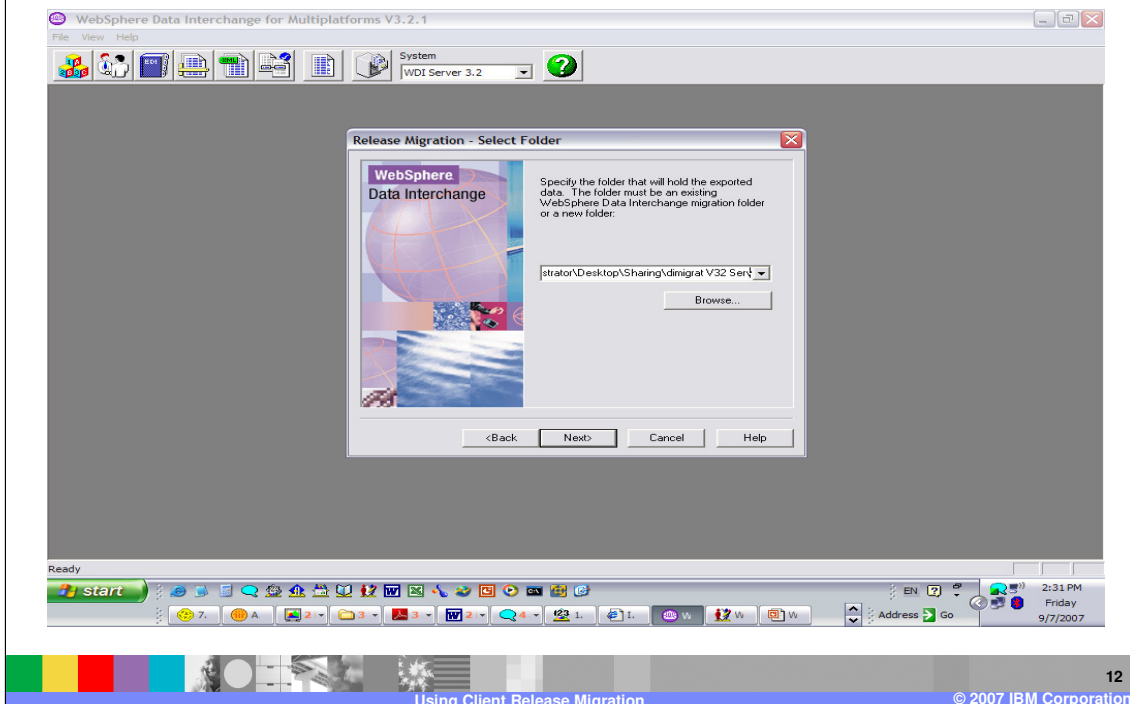


Select the type of data you are exporting, and then click **Next**. With System Data, only system data will be processed. System data is runtime data and customization time data. Configuration Data will migrate only configuration data. Both system data and configuration data can be migrated.

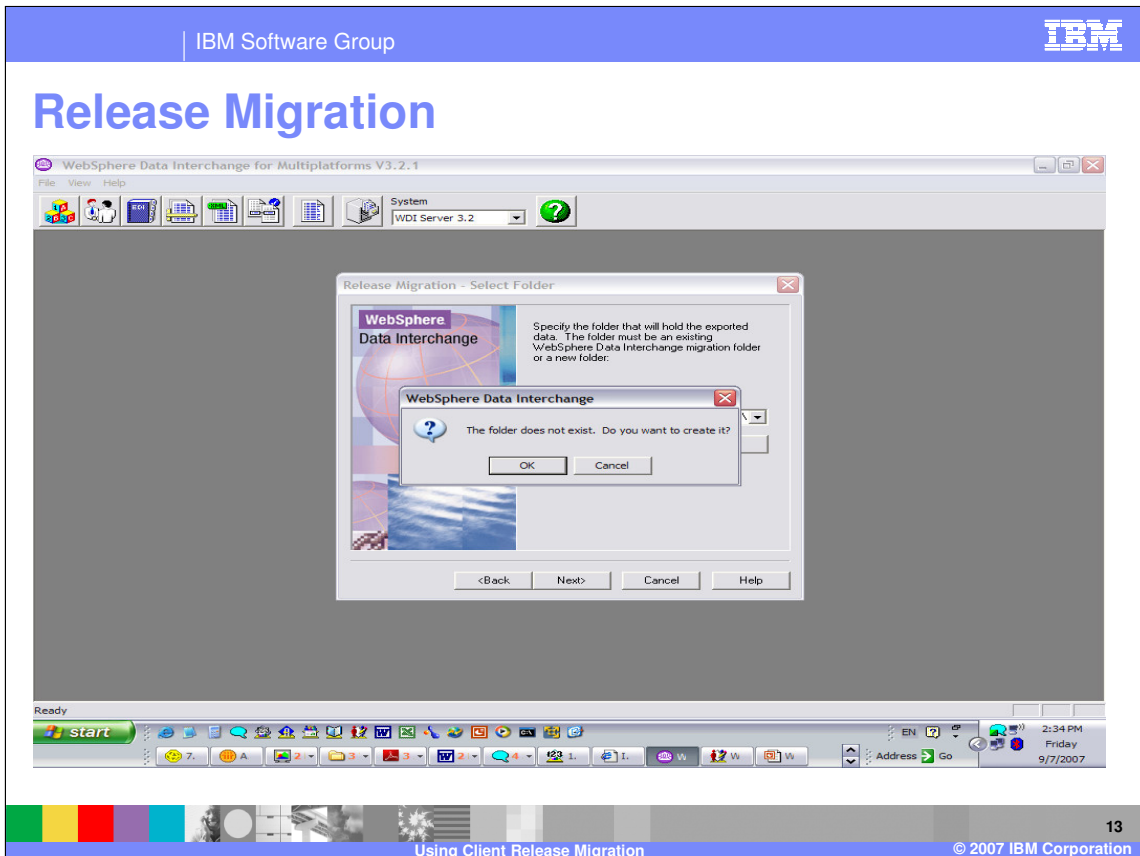


Select one or more systems to be used by the release migration process you chose, and then click **Next**. This is the system from which data will be exported by the release migration.

Release Migration

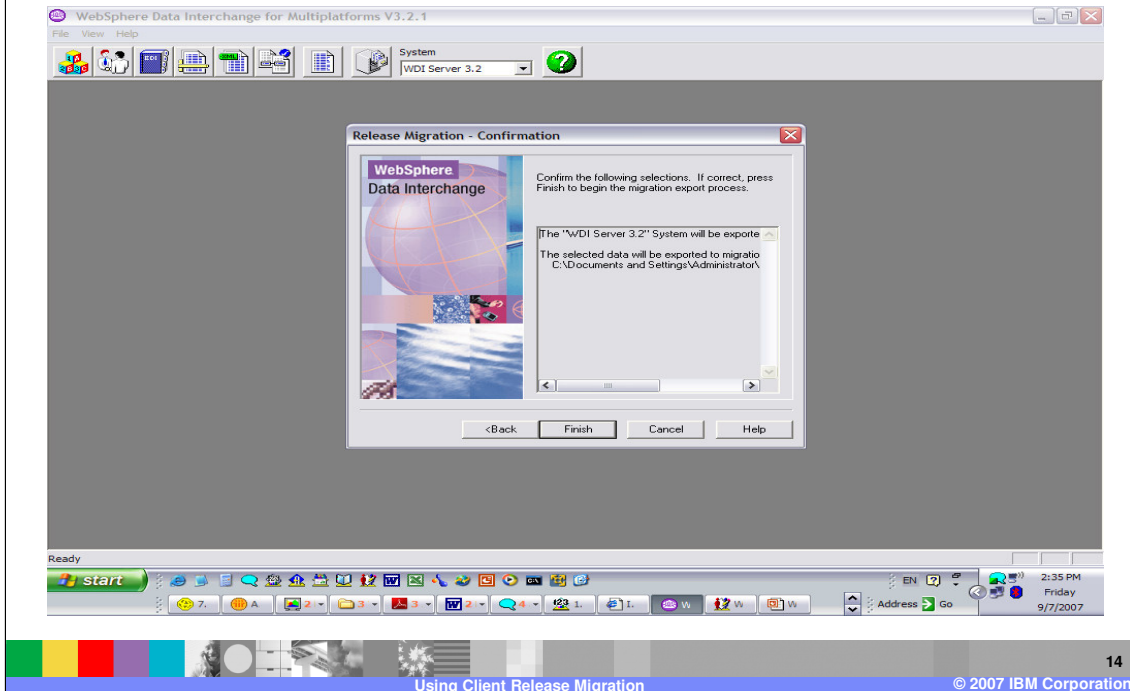


Type the migration path the data will be exported to. An existing path, from a previous WebSphere Data Interchange Client export, can be selected from the drop-down list. Click **Next**.



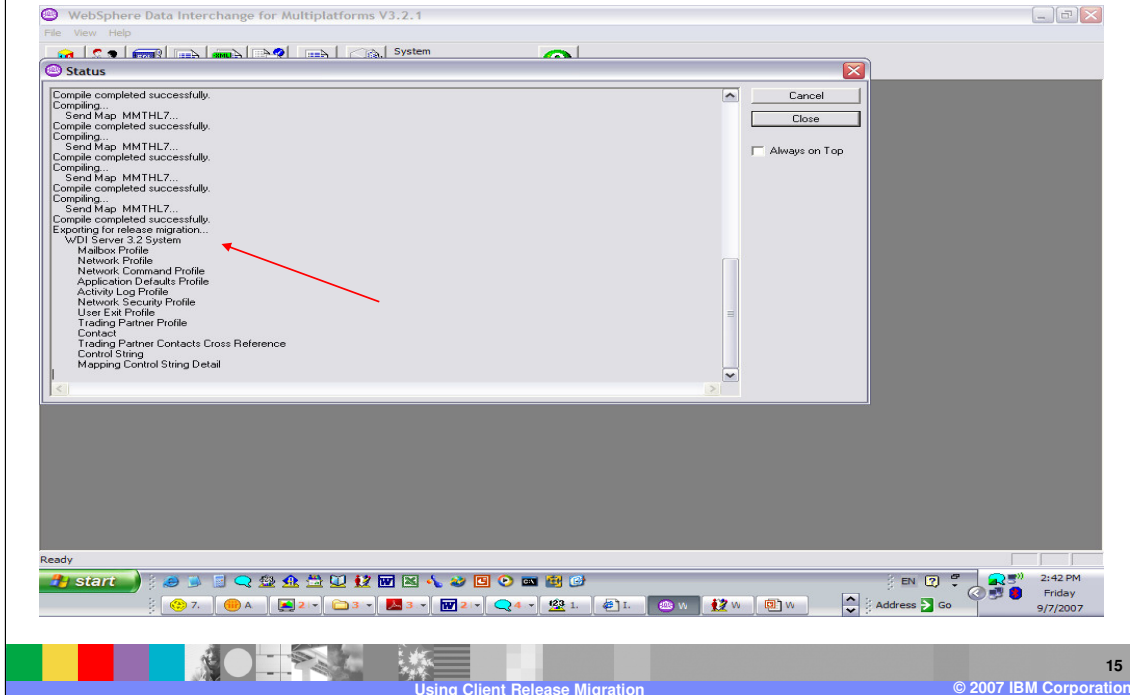
If the migration path does not exist Client will optionally create it.

Release Migration



Click **Finish** to begin the process.

Release Migration

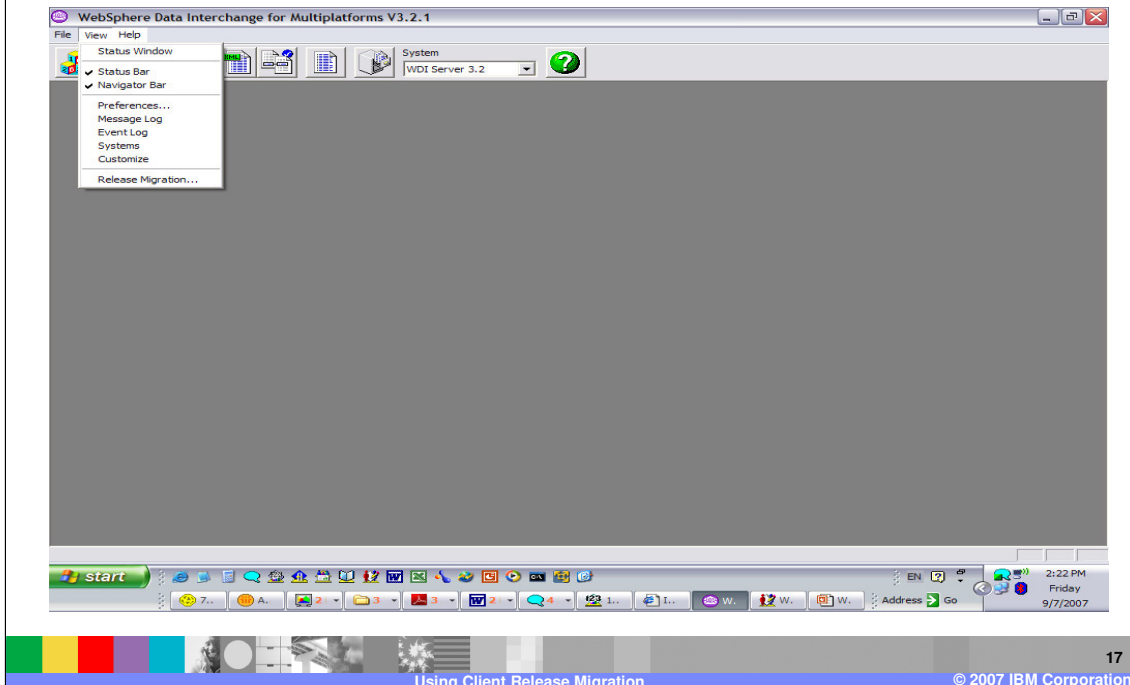


A status window displays during the export.

Section

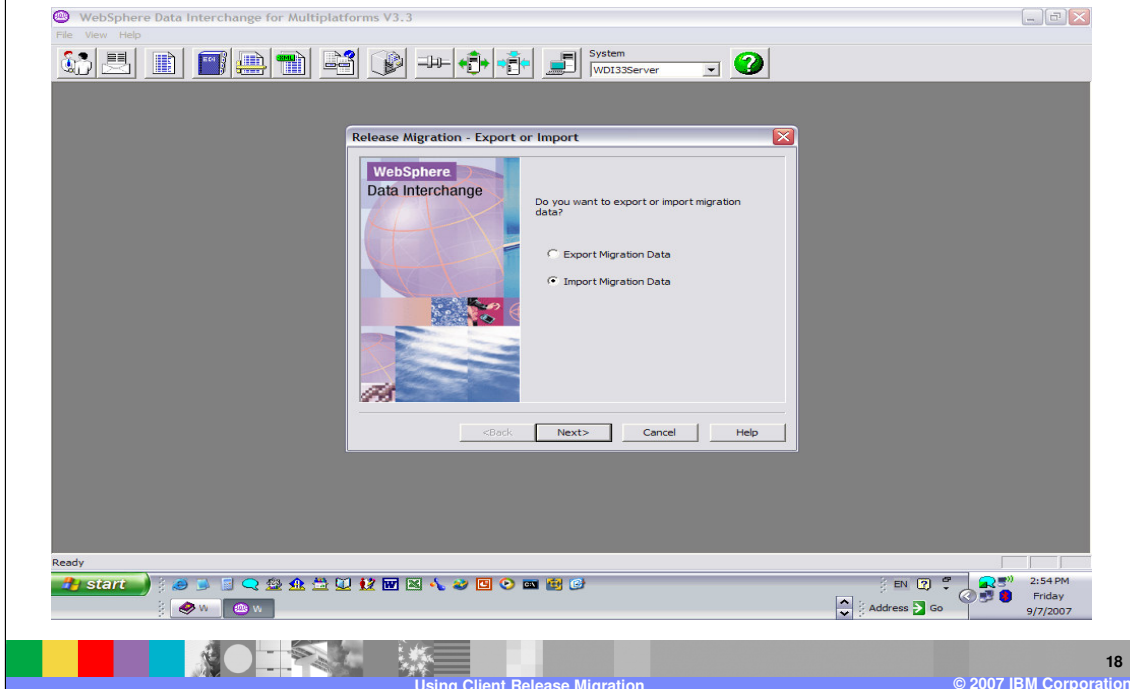
Importing Migrated Data

Release Migration



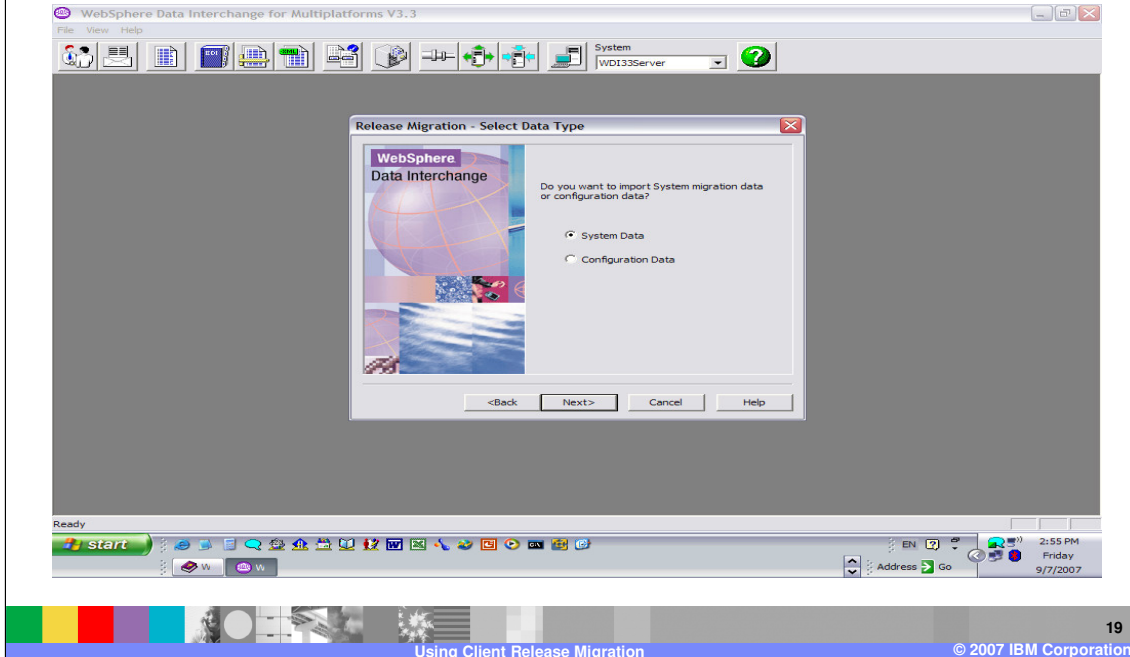
To import migrated data, select Release Migration from the View menu. All list windows within WebSphere Data Interchange Client must be closed.

Release Migration

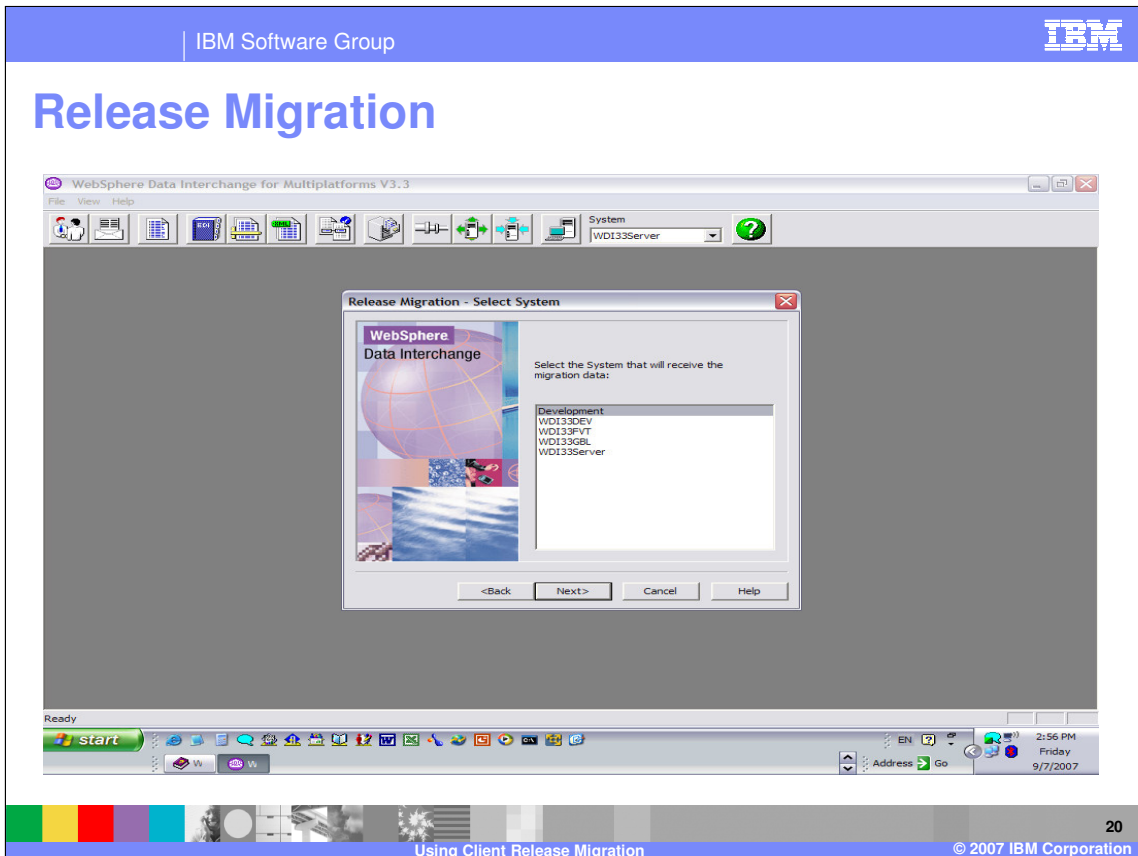


The Release Migration wizard displays. Select Import to populate the Client you are using with data from another version or release of the product, and then click **Next**.

Release Migration

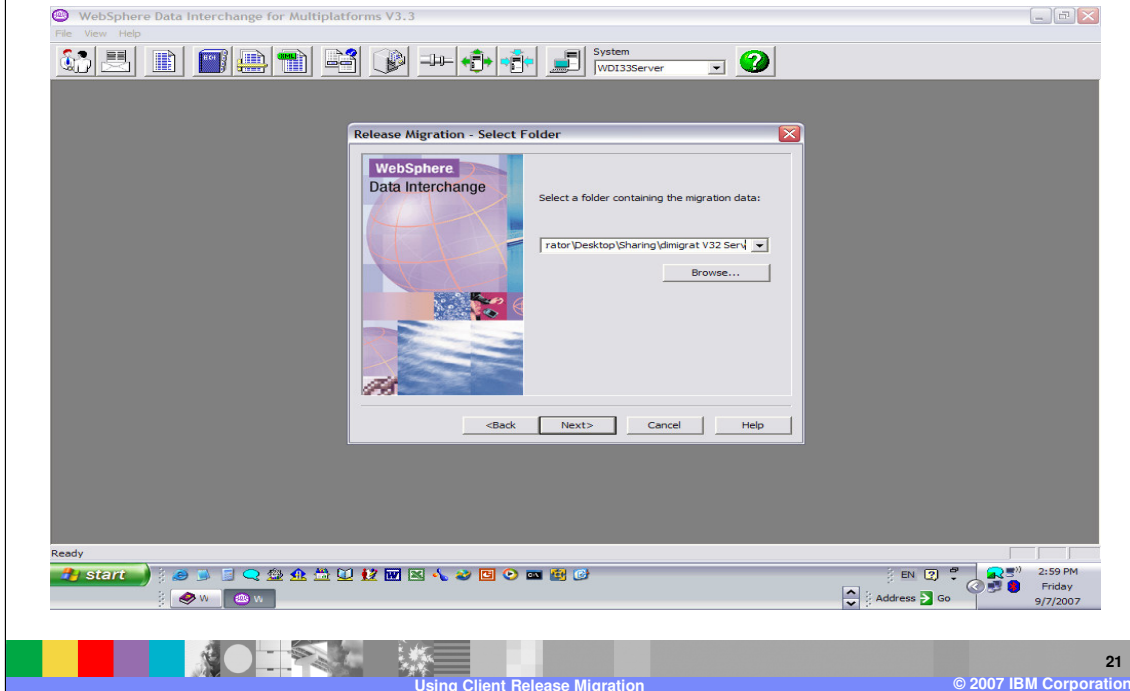


Select the type of data you are importing, and then click **Next**.

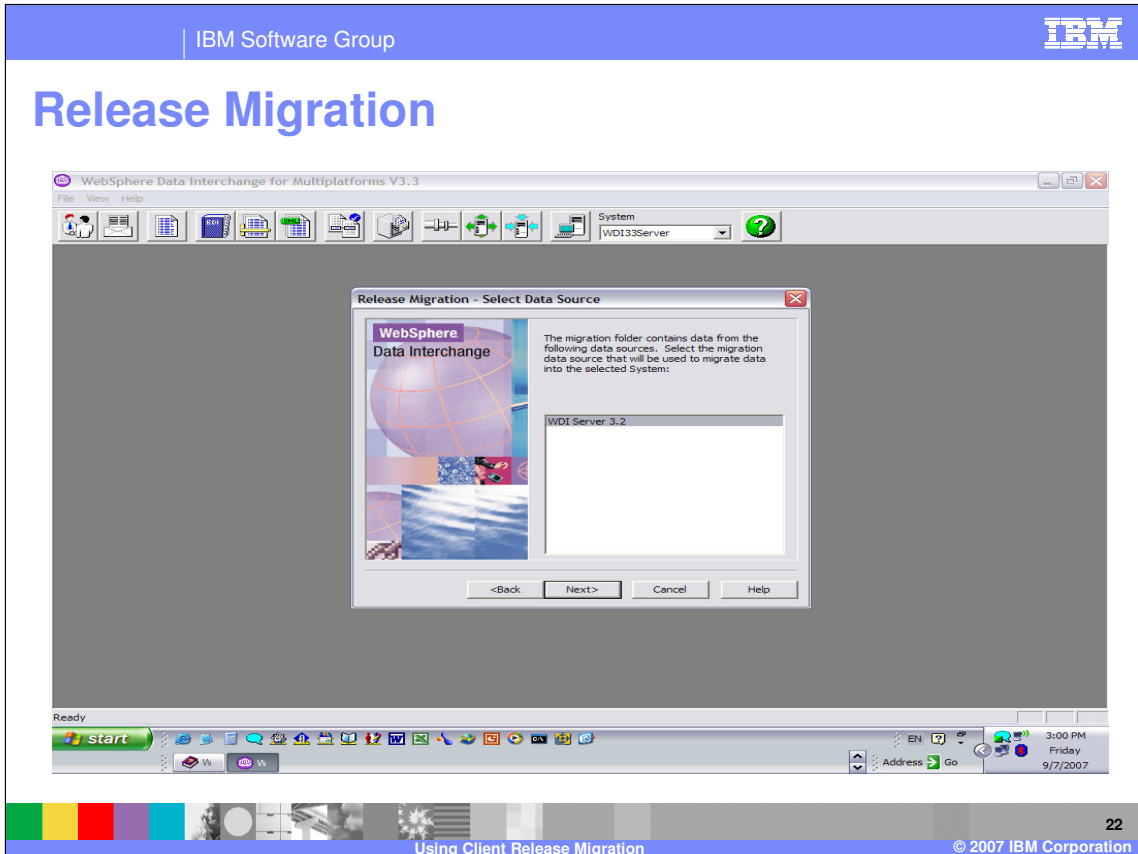


Select the system that the selected migration data source will migrate into, and then click **Next**. This screen displays only if more than one system is defined in the WebSphere Data Interchange Client.

Release Migration

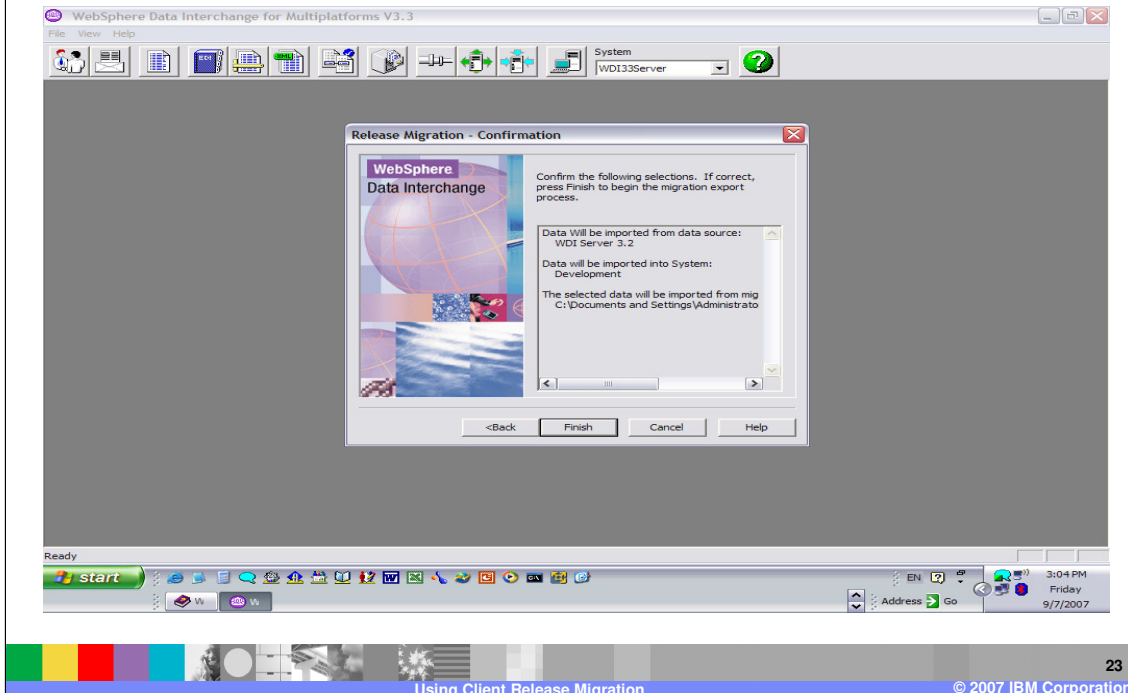


Select the path containing the migration data, and then click **Next**.



Select the migration data source to be used, and then click **Next**. Data output by Release Migration is written to a unique folder structure. Each release of WebSphere Data Interchange requires its own Release Migration folder; that is, two versions of WebSphere Data Interchange Client cannot write Release Migration data to the same Release Migration folder. A Release Migration folder will contain a control file, called “DIClient.mig” and one or more folders. Essentially, each of the additional folders will contain data from the Configuration database or a System. There will be one folder for each System. You can have more than one Release Migration folder for a release of WebSphere Data Interchange Client.

Release Migration



Confirm the options you have chosen for the import. To change the selected options, click **Back**; otherwise, click **Finish** to initiate the import.

Reference

- [WebSphere Data Interchange Client Help](#)
- [WebSphere Data Interchange Version 3.3 User's Guide](#)



More information can be found in the [WebSphere Data Interchange Client Help](#) and the [WebSphere Data Interchange Version 3.3 User's Guide](#).

Trademarks, copyrights, and disclaimers

The following terms are trademarks or registered trademarks of International Business Machines Corporation in the United States, other countries, or both:

IBM	CICS	IMS	WebSphere MQ	Tivoli
IBM (logo)	Cloudscape	Informix	OS/390	WebSphere
e/logo/business	DB2	iSeries	OS/400	xSeries
AIX	DB2 Universal Database	Lotus	pSeries	zSeries

Java and all Java-based trademarks are trademarks of Sun Microsystems, Inc. in the United States, other countries, or both.

Microsoft, Windows, Windows NT, and the Windows logo are registered trademarks of Microsoft Corporation in the United States, other countries, or both.

Intel, ActionMedia, LANDesk, MMX, Pentium and ProShare are trademarks of Intel Corporation in the United States, other countries, or both.

UNIX is a registered trademark of The Open Group in the United States and other countries.

Linux is a registered trademark of Linus Torvalds.

Other company, product and service names may be trademarks or service marks of others.

Product data has been reviewed for accuracy as of the date of initial publication. Product data is subject to change without notice. This document could include technical inaccuracies or typographical errors. IBM may make improvements and/or changes in the product(s) and/or program(s) described herein at any time without notice. Any statements regarding IBM's future direction and intent are subject to change or withdrawal without notice, and represent goals and objectives only. References in this document to IBM products, programs, or services does not imply that IBM intends to make such products, programs or services available in all countries in which IBM operates or does business. Any reference to an IBM Program Product in this document is not intended to state or imply that only that program product may be used. Any functionally equivalent program, that does not infringe IBM's intellectual property rights, may be used instead.

Information is provided "AS IS" without warranty of any kind. THE INFORMATION PROVIDED IN THIS DOCUMENT IS DISTRIBUTED "AS IS" WITHOUT ANY WARRANTY, EITHER EXPRESS OR IMPLIED. IBM EXPRESSLY DISCLAIMS ANY WARRANTIES OF MERCHANTABILITY, FITNESS FOR A PARTICULAR PURPOSE OR NON-INFRINGEMENT. IBM shall have no responsibility to update this information. IBM products are warranted, if at all, according to the terms and conditions of the agreements (e.g., IBM Customer Agreement, Statement of Limited Warranty, International Program License Agreement, etc.) under which they are provided. Information concerning non-IBM products was obtained from the suppliers of those products, their published announcements or other publicly available sources. IBM has not tested those products in connection with this publication and cannot confirm the accuracy of performance, compatibility or any other claims related to non-IBM products. IBM makes no representations or warranties, express or implied, regarding non-IBM products and services.

The provision of the information contained herein is not intended to, and does not, grant any right or license under any IBM patents or copyrights. Inquiries regarding patent or copyright licenses should be made, in writing, to:

IBM Director of Licensing
IBM Corporation
North Castle Drive
Armonk, NY 10504-1785
U.S.A.

Performance is based on measurements and projections using standard IBM benchmarks in a controlled environment. All customer examples described are presented as illustrations of how those customers have used IBM products and the results they may have achieved. The actual throughput or performance that any user will experience will vary depending upon considerations such as the amount of multiprogramming in the user's job stream, the I/O configuration, the storage configuration, and the workload processed. Therefore, no assurance can be given that an individual user will achieve throughput or performance improvements equivalent to the ratios stated here.

© Copyright International Business Machines Corporation 2006. All rights reserved.

Note to U.S. Government Users - Documentation related to restricted rights-Use, duplication or disclosure is subject to restrictions set forth in GSA ADP Schedule Contract and IBM Corp.