



IBM Software Group

IBM WebSphere® Data Interchange V3.3

Validation Maps



@business on demand.

© 2007 IBM Corporation

This presentation will review Validation Maps.

Objectives

- Describe validation maps
- Explain abilities and usefulness
- Introduce Service Segment Validation
- Review an example
- Summary



The presentation will describe validation maps and explain how they are used.

What's a validation map?

- Additional validation beyond what is specified in the EDI Standard.
- Source-based maps
- No target document.



Validation Maps provide the instructions needed to perform additional validation beyond what is specified in the Electronic Data Interchange (EDI) Standard for your EDI data. You can check whether the data conforms to an implementation guide or other user-defined requirements. Validation maps are source-based maps that do not have a target document. Errors generated in a Validation map are reported in addition to any EDI syntax errors found by the WebSphere Data Interchange (WDI) Validation processing.

Abilities of Validation Maps

- Manipulate data.
- Set fixed values into elements.
- Save data or set flags for later use.
- Validate data.
- Change values of data based on equivalent value specified in a translation table.
- Specify conditional translation processing.



Most data transformation mapping abilities are available in a validation map. You can manipulate data, use variables and flags, validate data against code list, and use conditional processing logic.

Usefulness of Validation Maps

- What do I do once I find an invalid item?
 - ▶ When an error is detected, the errors can be logged and the error code set.
 - ▶ Errors can also be passed to a Functional Acknowledgement map to generate custom functional acknowledgements.



Validation maps contain a few mapping commands and functions that are not available in data transformation maps. You can report errors that will be logged and also have the error reported in a Functional Acknowledgement.

How do I define a validation map?

- Validation Maps tab of the Mapping Functional Area.
- Specify a name, EDI standard dictionary and EDI standard transaction.
- Many of the concepts for Data Transformation maps also apply to Validation Maps.
 - ▶ Because Validation Maps do NOT have a target document, any mapping commands that specify a target document are NOT allowed, i.e. MapTo().



Validation Maps can be found in the Mapping Functional Area on the Validation Maps tab. The source document definition is EDI and when creating a Validation map you specify the EDI Dictionary and Document or standard transaction. Some data transformation mapping commands are not available to Validation maps for example MapTo because there is no target document.

Validation Mapping Commands*

- GetProperty()
- Assignment Statement
- If()..Else()
- Number()
- StrComp()
- Translate()
- Length()
- Validate()
- MapSwitch()

*Not intended to be all inclusive



This is a list of some of the data transformation mapping commands available to be used for validation.

Validation Mapping Commands – Now What?

- Issue an error message
 - ▶ Error(level, code, msgText)
- Issue a Functional Acknowledgement error
 - ▶ FAError(level, code, faCode, msgText, errType, segId, eltPos, subEltPos)
 - ▶ FAErrorPath (level, code, faCode, msgText, errType, sourcePath)
- Provide Implementation Guide errors reported in the X12 999 functional acknowledgement.
 - ▶ ErrorContext (text, reference)



The Error Command is available in both data transformation maps and validation maps. It does not report errors for a functional acknowledgement.

The FAError and FAErrorPath Commands are only available in validation maps and report errors for a functional acknowledgment. The ErrorContext command can be used to provide error message text and references from an implementation guide. The text and reference information can be used in the X12 999 functional acknowledgement. There can be up to 10 ErrorContext commands associated with a previous FAError or FAErrorPath command.

Errors generated in a Validation map that result in functional acknowledgement error reporting are reported in addition to any EDI syntax errors found by the WDI Validation processing.

Service Segment Validation

- Service segments are segments used when an EDI transaction is enveloped (ISA, IEA, UNB, UNZ).
- Special validation maps are provided for validating service segments.
- Use SERVICESEGVAL() on the PERFORM command to use these maps.
- Maps provided are: &WDI_E99AENV_VAL, &WDI_UCSENV_VAL, &WDI_TDIENV_VAL, and &WDI_X44ENV_VAL



Service Segment Validation maps are provided with WDI. These validation maps validate the Interchange or service segments. To activate the service segment validation the PERFORM keyword SERVICESEGVAL must be used.

Example – Validation Maps tab

WebSphere Data Interchange for Multiplatforms V3.3 - WDI33Server (Mapping) - Query: All

WDI33Server (Mapping) - Query: All

Map Name	Complete Required	Description	Lock	Updated Date
&WDI_E99AENV_VAL	Yes	EDIFACT Envelope Validation Mapping	No	2/20/2007
&WDI_TDIENV_VAL	Yes	UNTDI TRADACOMS Envelope Validation Mapping	No	2/20/2007
&WDI_UCSENV_VAL	Yes	UCS Envelope Validation Mapping	No	2/20/2007
&WDI_X4HENV_VAL	Yes	X12 Envelope Validation Mapping	No	2/20/2007
HIPAA_835_VALIDA	Yes	HIPAA 835 Validation Map	No	3/23/2007
X12_837PROF	No	HIPAA 837 Validation Map - Professional	No	3/9/2007 1

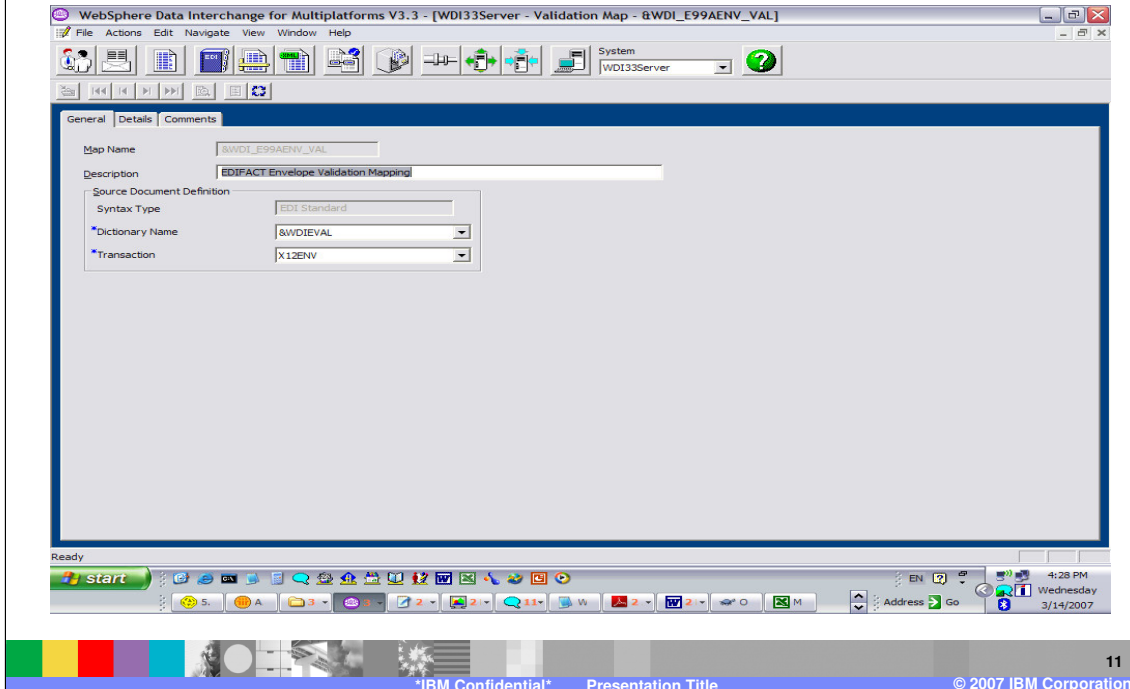
6 rows, current row 5, 1 selected rows

start | EN | 4:27 PM | Wednesday 3/14/2007

© 2007 IBM Corporation

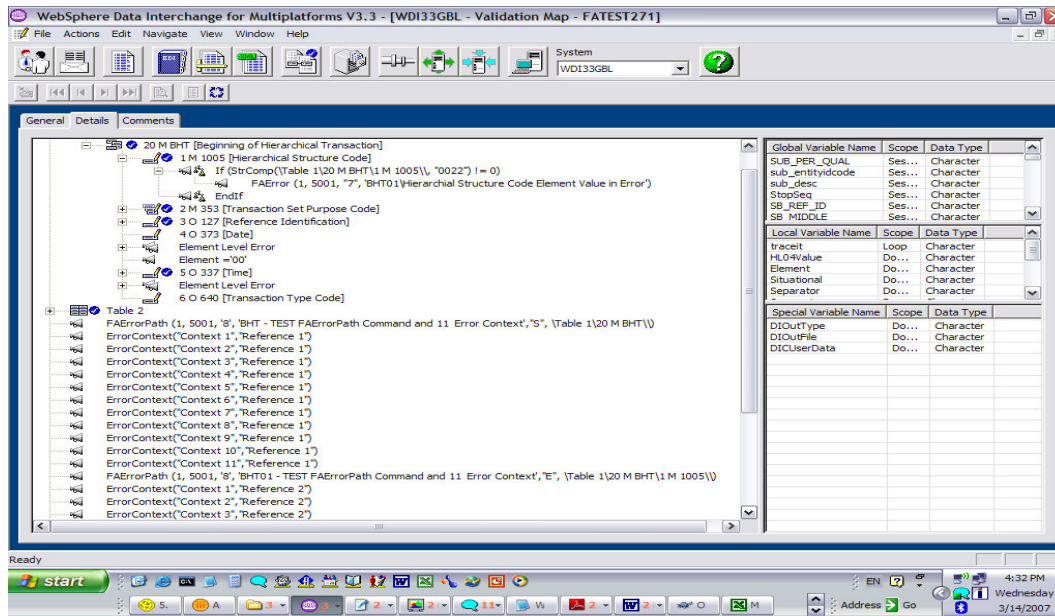
This is an example of the Validation Maps tab in WDI Client.

Example – General tab



The General tab contains the Source document definition or metadata.

Example – Detail tab



On the Detail tab the mapping commands are located under the source document. This is an example of using the FAError, ErrorContext, and FAErrorPath commands. Mapping commands are created in the Validation maps in the same manner as with data transformation maps.

Validation Map Execution

- Validation map specified on the Data Transformation map rule
- Can be used for inbound or outbound validation



When the Validation map is ready to use, you can specify the map the use on the Data Transformation map rule. The validation map can be executed for either inbound or outbound validation depending on the Data Transformation map source and target document type.

Validation Map Execution

WebSphere Data Interchange for Multiplatforms V3.3.3 - [WDI33Server (Mapping) - Query: All]

Map Name	Compile Required	Description	Lock	Updated Date and Time	Updated User II
B33PROF_TO_XML	No	TM map from X12 837 Prof. HIPAA Tran. to XML	No	3/9/2007 11:11:23 AM	awinters
DTDATATYPE-TESTO	No	Test BN, HV, PD, etc data types	No	1/17/2007 9:05:57 AM	awinters
DTDATATYPE-TESTI	No	Test BN, HV, PD, etc data types	No	1/17/2007 9:05:59 AM	awinters
HIPAA33_TO_DF	No	Performance test scenario 4	No	2/23/2007 2:51:20 PM	awinters
INVOIC93_TRAD	Yes	INVOICE XML VERSION93 TRADACOMS XSD	No	1/25/2007 9:04:58 AM	awinters
MRTST_DFCV_DFCV	Yes	Multi Record Id Test DF LOC to DF LOC - Source	No	2/20/2007 9:44:02 AM	awinters
MRTST_DFCV_DFCVU	Yes	Multi Record Id Test DF UNIT to DF UNIT - Source	No	2/20/2007 9:44:04 AM	awinters
MRTST_DFRW_DFRW	Yes	Multi Record ID Test DF LOC to DF LOC - Source	No	2/20/2007 9:44:06 AM	awinters
MRTST_DFRW_DFRWU	Yes	Multi Record ID Test DF UNIT to DF UNIT - Source	No	2/20/2007 9:44:07 AM	awinters
POXMLSR-EDI	No	POXMLSR to EDI (X12)	No	2/20/2007 11:11:18...	awinters
S-DT-ADF-TO-EDI	Yes	Source - Demo for Sending Purchase Order (850)	No	1/26/2007 11:23:03...	awinters
S-DT-ADF-TO-XML	No	Source - EBXML ORDER - with SAP Idoc outbound	No	2/7/2007 12:51:27 PM	awinters
SPLIT_EVANPLE	Yes	Dutch Tax XML Split to Employee XML	No	3/14/2007 12:41:44...	awinters
T-DT-EDI-TO-ADF	No	Target - Demo for Receiving Purchase Order (850)	No	2/1/2007 4:54:24 PM	awinters
TEST3	Yes		No	2/27/2007 9:16:52 AM	awinters
TEST4	Yes		No	2/27/2007 9:16:52 AM	awinters
TEST5	Yes		No	3/1/2007 4:22:42 PM	awinters
WDICONFLB2_R850S	Yes	RCV DT Map X12V4R1(850) - WDI Conf 2006 Lab 2 SRC	No	2/27/2007 11:25:52...	awinters
WDICONFLB2_R850T	Yes	RCV DT Map X12V4R1(850) - WDI Conf 2006 Lab 2 TGT	No	2/27/2007 11:25:57...	awinters
WDICONFLB2_S850S	Yes	SND DT Map X12V4R1(850) - WDI Conf 2006 Lab 2 SRC	No	2/27/2007 11:25:58...	awinters
WDICONFLB2_S850T	Yes	SND DT Map X12V4R1(850) - WDI Conf 2006 Lab 2 TGT	No	2/27/2007 11:25:59...	awinters
WDICONFLB_HLCOHP	No		No	3/1/2007 3:55:12 PM	awinters
WDICONFLB_HLLOOP	Yes		No	3/1/2007 3:57:03 PM	awinters
WDICON_CMDS	Yes		No	3/1/2007 3:55:00 PM	awinters
WDICON_COMS	Yes		No	3/1/2007 9:00:08 AM	awinters
WDICON_FUNCIS	Yes	SND DT Map X12V4R1(850) - WDI Conf 2006 Lab 2 SRC	No	3/1/2007 11:07:39 AM	awinters
WDILAB2	No	SND DT Map X12V4R1(850) - WDI Conf 2006 Lab 2 SRC	No	3/1/2007 3:55:12 PM	awinters

27 rows, current row 1, 1 selected rows

Data Transformation map rules for a specific map can be created and updated using the View Rules and Usages button.

Validation Map Execution

The screenshot displays the WebSphere Data Interchange for Multiplatforms V3.3 interface. The window title is "WebSphere Data Interchange for Multiplatforms V3.3 - [WDI33GBL (Rules for Data Transformation Map - FATEST_271)]". The interface includes a menu bar (File, Actions, View, Window, Help) and a toolbar with various icons. Below the toolbar is a "Data Transformation Map Rules" table with the following columns: Dictionary Name, Document Name, Map Name, Process, Sending Trading Partner Profile, Receiving Trading Partner Profile, and Description. The table contains one row of data.

Dictionary Name	Document Name	Map Name	Process	Sending Trading Partner Profile	Receiving Trading Partner Profile	Description
HIPAA271	271	FATEST_271		ANY	ANY	

At the bottom of the table, it indicates "1 rows". The Windows taskbar is visible at the bottom of the screenshot, showing the Start button, several application icons, and the system tray with the time "4:51 PM" and date "Wednesday 3/14/2007".

To view the Rule, double click on the Rule in the list.

IBM Software Group

IBM

Validation Map Execution

The screenshot shows the 'WebSphere Data Interchange for Multiplatforms V3.3' interface. The title bar indicates the current rule is 'Data Transformation Map Rule - FATEST_271 ANY ANY Production FA999V5...'. The 'WDI Options' tab is active, showing configuration for Inbound, Outbound, Transformation, and Acknowledgement options. A red arrow points to the 'Validation Map' dropdown in the Inbound Options section, which is currently set to 'FATEST271'. Other options include 'Mandatory Validation Plus Code Lists Plus Data Type Verification' for Validation Level, 'HIPAACHA' for Alphanumeric Data Validation Table, and 'CHARSET' for Character Data Validation Table. The Acknowledgement Options section shows 'Acknowledgement Expected' checked and 'Functional Acknowledgement Map' set to 'SDT_FA999VSR1'.

16

IBM Confidential Presentation Title © 2007 IBM Corporation

The Validation map is specified on the WDI Options tab. In this data transformation map rule example, the source document is EDI and the target document is not EDI. The Inbound Options contain the Validation map to be executed.

Summary

- Validation Maps provided extended validation of EDI data.
- The abilities of a Validation Map makes it a powerful tool.
- Defined much like Data Transformation maps, but no target document.
- Service Segment Validation maps are provided



Validation maps provide extended validation beyond the WDI EDI standard syntax validation processing. Mapping commands can be entered the same as with Data Transformation maps. Service Segment Validation maps are provide to validate the EDI Interchange or Service segments.

Trademarks, copyrights, and disclaimers

The following terms are trademarks or registered trademarks of International Business Machines Corporation in the United States, other countries, or both:

IBM
IBM (logo)
e/Logo/business
AIX

CICS
Cloudscape
DB2
DB2 Universal Database

IMS
Informix
iSeries
Lotus

WMO
OS/390
OS/400
pSeries

Tivoli
WebSphere
xSeries
zSeries

Java and all Java-based trademarks are trademarks of Sun Microsystems, Inc. in the United States, other countries, or both.

Microsoft, Windows, Windows NT, and the Windows logo are registered trademarks of Microsoft Corporation in the United States, other countries, or both.

Intel, ActionMedia, LANDesk, MMX, Pentium and ProShare are trademarks of Intel Corporation in the United States, other countries, or both.

UNIX is a registered trademark of The Open Group in the United States and other countries.

Linux is a registered trademark of Linus Torvalds.

Other company, product and service names may be trademarks or service marks of others.

Product data has been reviewed for accuracy as of the date of initial publication. Product data is subject to change without notice. This document could include technical inaccuracies or typographical errors. IBM may make improvements and/or changes in the product(s) and/or program(s) described herein at any time without notice. Any statements regarding IBM's future direction and intent are subject to change or withdrawal without notice, and represent goals and objectives only. References in this document to IBM products, programs, or services does not imply that IBM intends to make such products, programs or services available in all countries in which IBM operates or does business. Any reference to an IBM Program Product in this document is not intended to state or imply that only that program product may be used. Any functionally equivalent program, that does not infringe IBM's intellectual property rights, may be used instead.

Information is provided "AS IS" without warranty of any kind. THE INFORMATION PROVIDED IN THIS DOCUMENT IS DISTRIBUTED "AS IS" WITHOUT ANY WARRANTY, EITHER EXPRESS OR IMPLIED. IBM EXPRESSLY DISCLAIMS ANY WARRANTIES OF MERCHANTABILITY, FITNESS FOR A PARTICULAR PURPOSE OR NONINFRINGEMENT. IBM shall have no responsibility to update this information. IBM products are warranted, if at all, according to the terms and conditions of the agreements (e.g., IBM Customer Agreement, Statement of Limited Warranty, International Program License Agreement, etc.) under which they are provided. Information concerning non-IBM products was obtained from the suppliers of those products, their published announcements or other publicly available sources. IBM has not tested those products in connection with this publication and cannot confirm the accuracy of performance, compatibility or any other claims related to non-IBM products. IBM makes no representations or warranties, express or implied, regarding non-IBM products and services.

The provision of the information contained herein is not intended to, and does not, grant any right or license under any IBM patents or copyrights. Inquiries regarding patent or copyright licenses should be made, in writing, to:

IBM Director of Licensing
IBM Corporation
North Castle Drive
Armonk, NY 10504-1785
U.S.A.

Performance is based on measurements and projections using standard IBM benchmarks in a controlled environment. All customer examples described are presented as illustrations of how those customers have used IBM products and the results they may have achieved. The actual throughput or performance that any user will experience will vary depending upon considerations such as the amount of multiprogramming in the user's job stream, the I/O configuration, the storage configuration, and the workload processed. Therefore, no assurance can be given that an individual user will achieve throughput or performance improvements equivalent to the ratios stated here.

© Copyright International Business Machines Corporation 2006. All rights reserved.

Note to U.S. Government Users - Documentation related to restricted rights-Use, duplication or disclosure is subject to restrictions set forth in GSA ADP Schedule Contract and IBM Corp.