

Transforming @ IBM

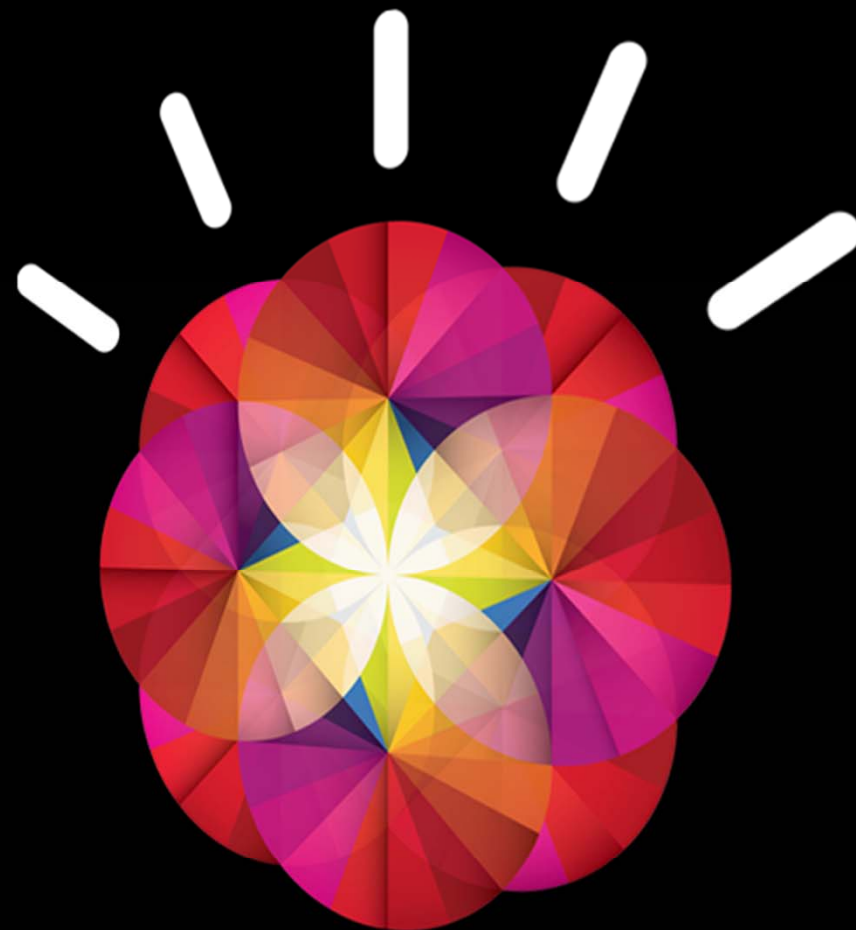
The Journey to Smarter Computing

Leslie L. Gordon

Vice President

Application and Infrastructure Services Management

IBM



IBM Transformation: The Journey to Smarter Computing



- **Foundation**

- IBM Transformation Strategy

- **Optimization**

- Virtualization – Enterprise Computing Model (ECM)

- **Innovation**

- Cloud Computing

IBM's strategy

A decade ago we saw change coming and took decisive actions that have enabled IBM to turn today's disruption into opportunity.

**Changes
in world
markets**



**Become the
premier Globally
Integrated
Enterprise**

**Changes in
information
technology**



**Focus on open
technologies
and high-value
solutions**

**Changes
in client
needs**



**Deliver
integration and
innovation to
clients**

IBMers Value



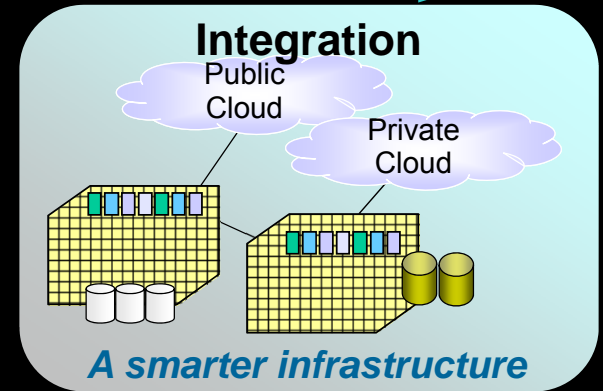
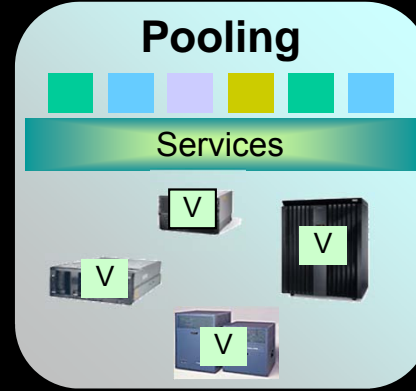
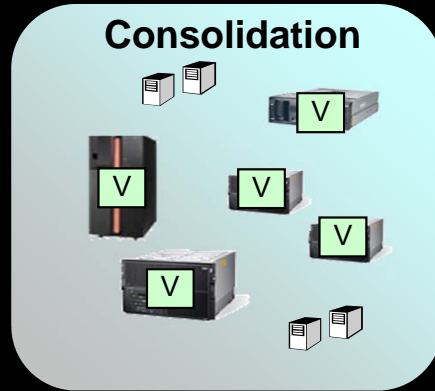
Dedication to every client's success.

Innovation that matters—for our company and for the world.

Trust and personal responsibility in all relationships.

IT Infrastructure Evolution

IT Simplification



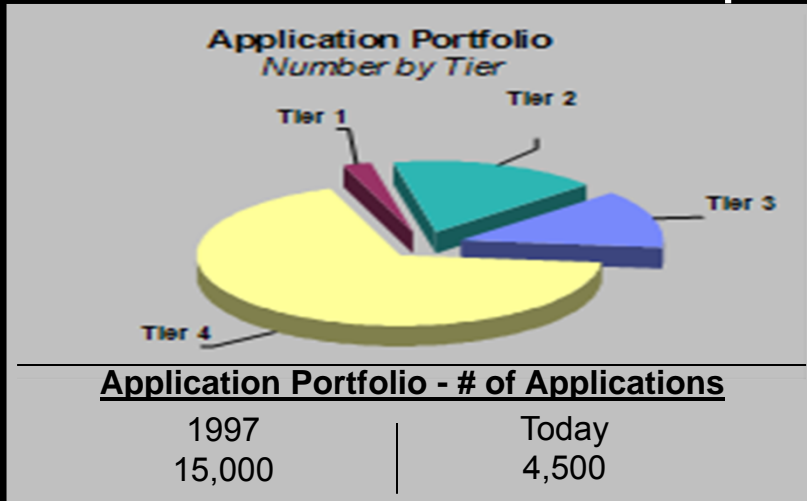
Top IT Requirements

- *Agility*
- *Resiliency*
- *Security*
- *Greenness*
- *Low Cost*

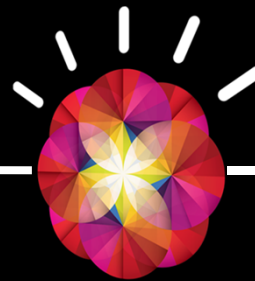
Key Technologies

- *Service oriented architecture*
- *End-to-end service mgmt*
- *Comprehensive virtualization*
- *Ensembles & scalable server*
- *Converged networks*
- *Cloud computing services*

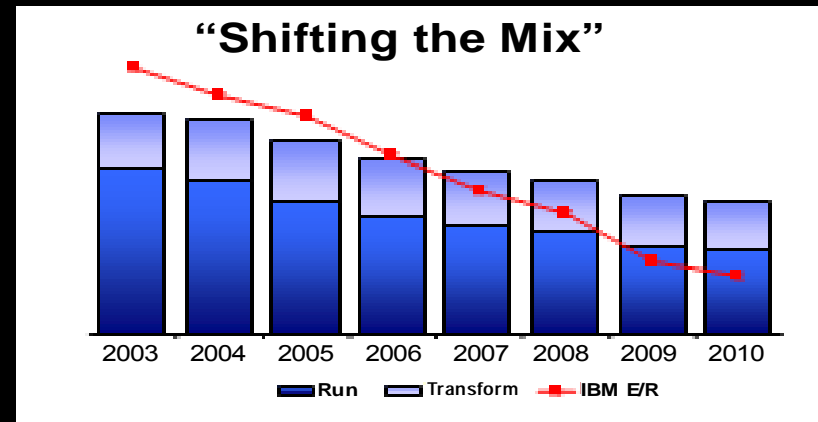
CIO Run Portfolio – Composition and Trends



Continued cost take-down requires transformational change



Leveraging virtualization, standardization/automation and integrated service management



Project “Big Green” – Server Virtualization

IBM’s Enterprise Computing Model program is yielding significant benefits for the corporation

Progress

Servers consolidated
over 5,700




Current migration pace
2000 servers/year

Energy savings –
>20k MWh saved

Reduction in floor space -
47,000 square feet

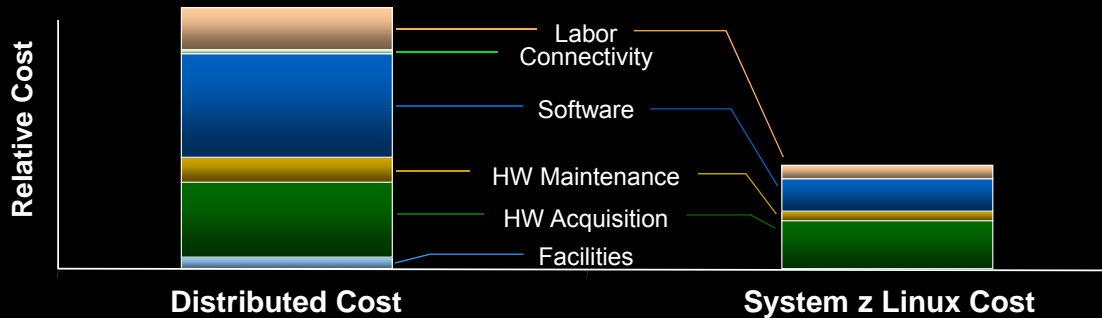
Dramatic Simplification
Software Licenses reduced by 93%

**Physical Network Connections
reduced by 55%**

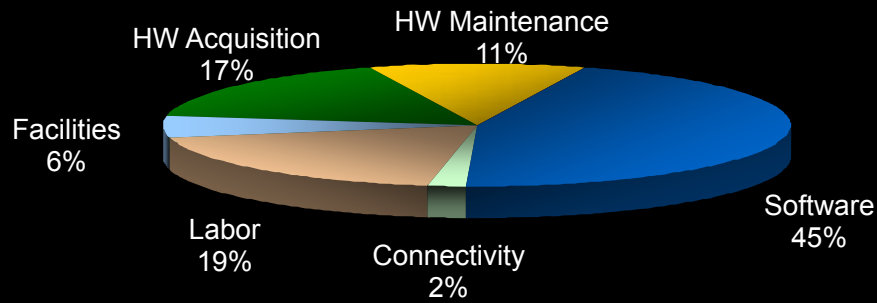
	Benefits Realized
Business Case 	<ul style="list-style-type: none">■ Energy savings■ Reduced IT costs■ Reduced capital req'ts■ HW/SW refresh
Standards and Simplification 	<ul style="list-style-type: none">■ Inventory hygiene■ Application mapping■ Faster provisioning
Service Quality 	<ul style="list-style-type: none">■ Improved security■ Increased resiliency■ Simple, stable, available

Client View of TCO Comparison for Similar Distributed Workload vs. System z Linux results in Potential 60-75% Gross Cost Savings / 5 years

Operating Cost: Distributed vs. Mainframe



Potential Savings: Categories as a % of Gross Savings

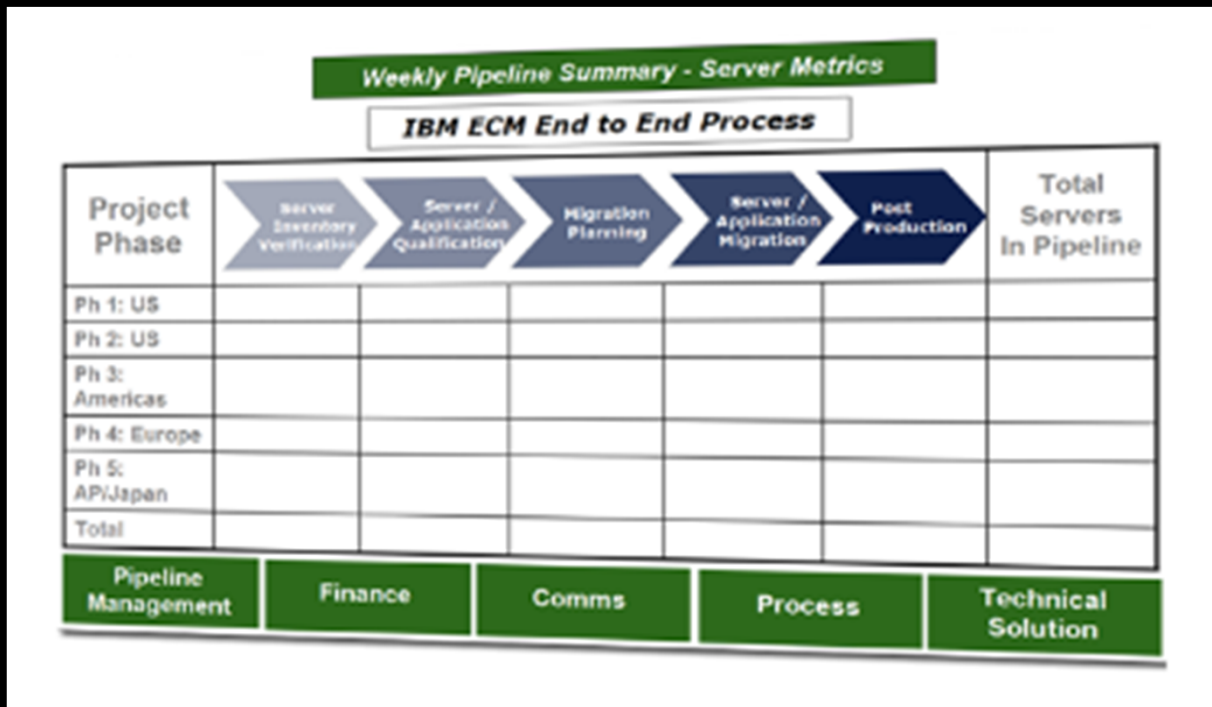


Dramatic Simplification

Unit	Distributed	System z Linux	% Reduction
Software Licenses	26,700	1,800	93%
Ports	31,300	960	97%
Cables	19,500	700	96%
Physical Network Connections	15,700	7,000	55%

Managing the Migration – A “work in process” approach

Management Approach and Reporting



- Process approach borrowed from factory line management
- Metrics for each sub-process
- Process fallout – tracked by cause
- Daily status calls issue resolution
- Weekly management review cadence

Enterprise view enables workload selection and migration success

Location View

Southbury GWA consolidation –
sunset of first-generation Web Architecture



Environment View

Development and Test Environments
allowing for iterative development and
better application quality



Migration Candidates Sourcing

Application View

Portfolio analysis and
“workload” selection –
OnDemand Workplace, e-mail, Supply Chain

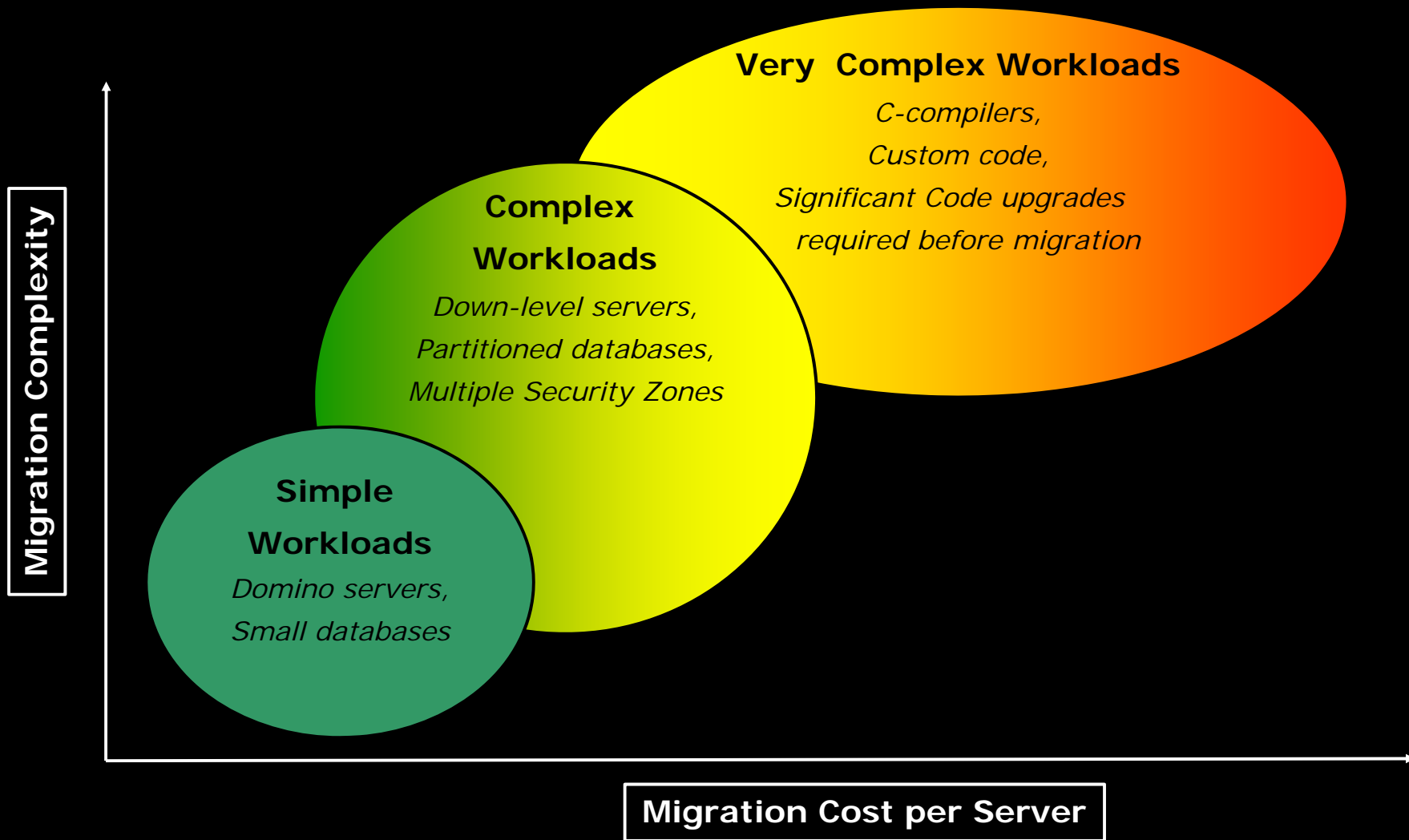


Technology View

Bulk Moves –
sunset of first-generation Web Architecture

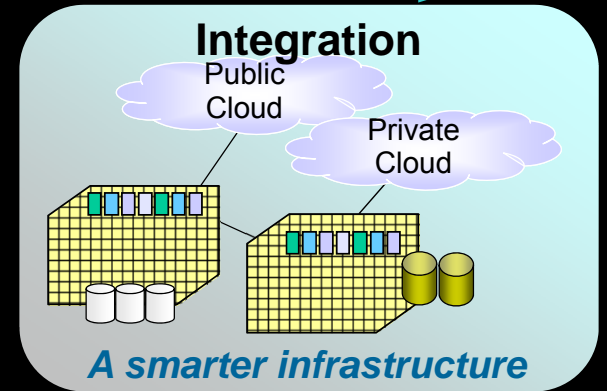
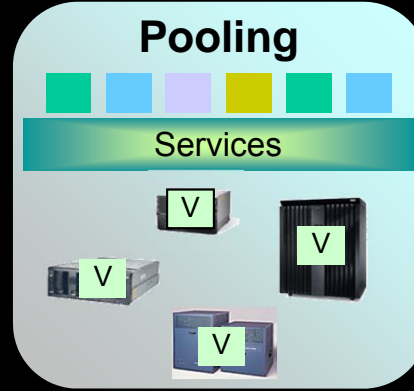
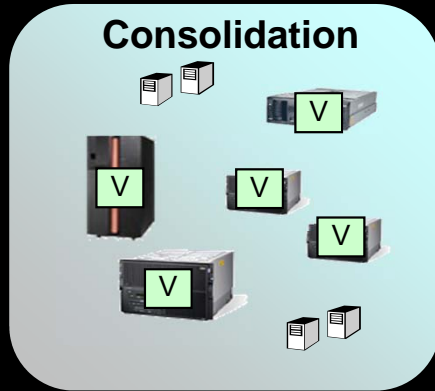


Workload Complexity influences Migration Cost

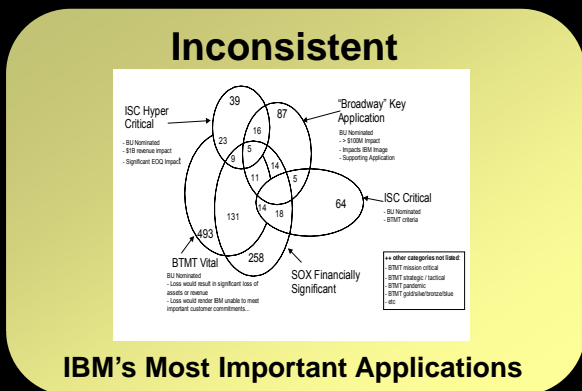


IT Infrastructure Evolution

IT Simplification



Manage IT Services



Rationalized

	Tier 1	Tier 2	Tier 3	Tier 4
Application Class	Key – Most Critical	Strategic & Mission Critical	Strategic & Not Mission Critical	Not Strategic or Mission Critical
Apps	4 %	20 %	19 %	57 %
Availability	Very High	High	Medium	Low
Support	24 x 7	24 x 7	M-F 12 x 5	Best Effort
Monitoring	App Level	Infra	Basic Server	No Monitoring

Service Catalog



IBM is applying Cloud across several key domains

IBM's internal Cloud implementations move resources to more agile, cost-effective platforms

Analytics	Collaboration	Develop/Test	Desktop	Storage	Prod Support
 <p>Blue Insight</p> <ul style="list-style-type: none"> • Large, private analytics cloud powered by Cognos • Expanded insight; cost savings 	 <p>LotusLive</p> <ul style="list-style-type: none"> • Collaboration tools—web conferencing • Standard platform supporting global, virtual workforce 	 <p>Develop/Test Cloud</p> <ul style="list-style-type: none"> • Self-service computing capacity for development • Rapid provisioning' increased agility and flexibility; standard platform 	 <p>Workplace Cloud</p> <ul style="list-style-type: none"> • Roles-based, virtual work environments • Greater agility; increased security 	 <p>Storage Cloud</p> <ul style="list-style-type: none"> • File storage cloud in place; block storage cloud in progress • Maximized utilization through automated provisioning and tiering 	 <p>Production Cloud</p> <ul style="list-style-type: none"> • Cloud-supported environment for production applications • Standardized services by tier; lower labor costs for support; optimized

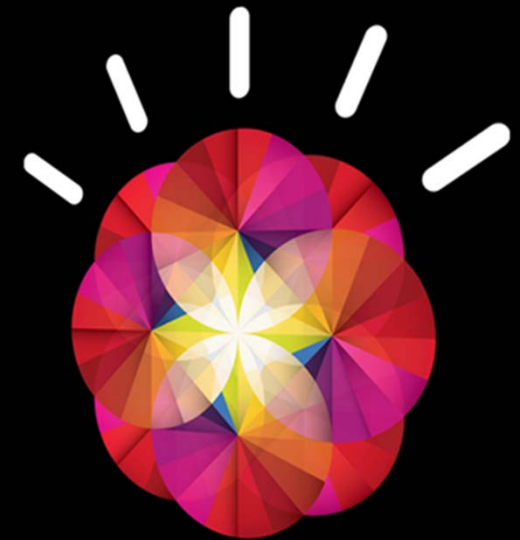
Journey to Smarter Computing – Critical Success Factors

Foundation

Optimization

Innovation

- Enterprise view and sponsorship
- Strategic investment
- Clear goals with a dedicated team
- Inclusive leadership
- Continuity of leadership
- Leverage talent and capability to drive results





Trademarks

The following are trademarks of the International Business Machines Corporation in the United States and/or other countries.

AIX*	IBM	System p System x	WebSphere*
DB2*	IBM Business Partner Logo*	System z	z10
Db2 Universal Database	IBM Logo*	System z9	z/OS*
Domino*	POWER5	System z10	zSeries*
GARS	Power Systems	Tivoli*	z/VM*
HiperSockets	System I		

* Registered trademarks of IBM Corporation

The following are trademarks or registered trademarks of other companies.

Adobe, the Adobe logo, PostScript, and the PostScript logo are either registered trademarks or trademarks of Adobe Systems Incorporated in the United States, and/or other countries.

Cell Broadband Engine is a trademark of Sony Computer Entertainment, Inc. in the United States, other countries, or both and is used under license there from.

Java and all Java-based trademarks are trademarks of Sun Microsystems, Inc. in the United States, other countries, or both.

Microsoft, Windows, Windows NT, and the Windows logo are trademarks of Microsoft Corporation in the United States, other countries, or both.

Intel, Intel logo, Intel Inside, Intel Inside logo, Intel Centrino, Intel Centrino logo, Celeron, Intel Xeon, Intel SpeedStep, Itanium, and Pentium are trademarks or registered trademarks of Intel Corporation or its subsidiaries in the United States and other countries.

UNIX is a registered trademark of The Open Group in the United States and other countries.

Linux is a registered trademark of Linus Torvalds in the United States, other countries, or both.

ITIL is a registered trademark, and a registered community trademark of the Office of Government Commerce, and is registered in the U.S. Patent and Trademark Office.

IT Infrastructure Library is a registered trademark of the Central Computer and Telecommunications Agency, which is now part of the Office of Government Commerce.

* All other products may be trademarks or registered trademarks of their respective companies.

Notes:

Performance is in Internal Throughput Rate (ITR) ratio based on measurements and projections using standard IBM benchmarks in a controlled environment. The actual throughput that any user will experience will vary depending upon considerations such as the amount of multiprogramming in the user's job stream, the I/O configuration, the storage configuration, and the workload processed. Therefore, no assurance can be given that an individual user will achieve throughput improvements equivalent to the performance ratios stated here.

All performance information was determined in a controlled environment. Actual results may vary. Performance information is provided "AS IS" and no warranties or guarantees are expressed or implied by IBM. IBM hardware products are manufactured from new parts, or new and serviceable used parts. Regardless, our warranty terms apply.

All customer examples cited or described in this presentation are presented as illustrations of the manner in which some customers have used IBM products and the results they may have achieved. Actual environmental costs and performance characteristics will vary depending on individual customer configurations and conditions.

This publication was produced in the United States. IBM may not offer the products, services or features discussed in this document in other countries, and the information may be subject to change without notice. Consult your local IBM business contact for information on the product or services available in your area.

All statements regarding IBM's future direction and intent are subject to change or withdrawal without notice, and represent goals and objectives only.

Information about non-IBM products is obtained from the manufacturers of those products or their published announcements. IBM has not tested those products and cannot confirm the performance, compatibility, or any other claims related to non-IBM products. Questions on the capabilities of non-IBM products should be addressed to the suppliers of those products.

Prices subject to change without notice. Contact your IBM representative or Business Partner for the most current pricing in your geography.