

Pulse

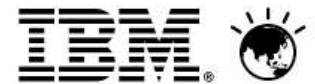
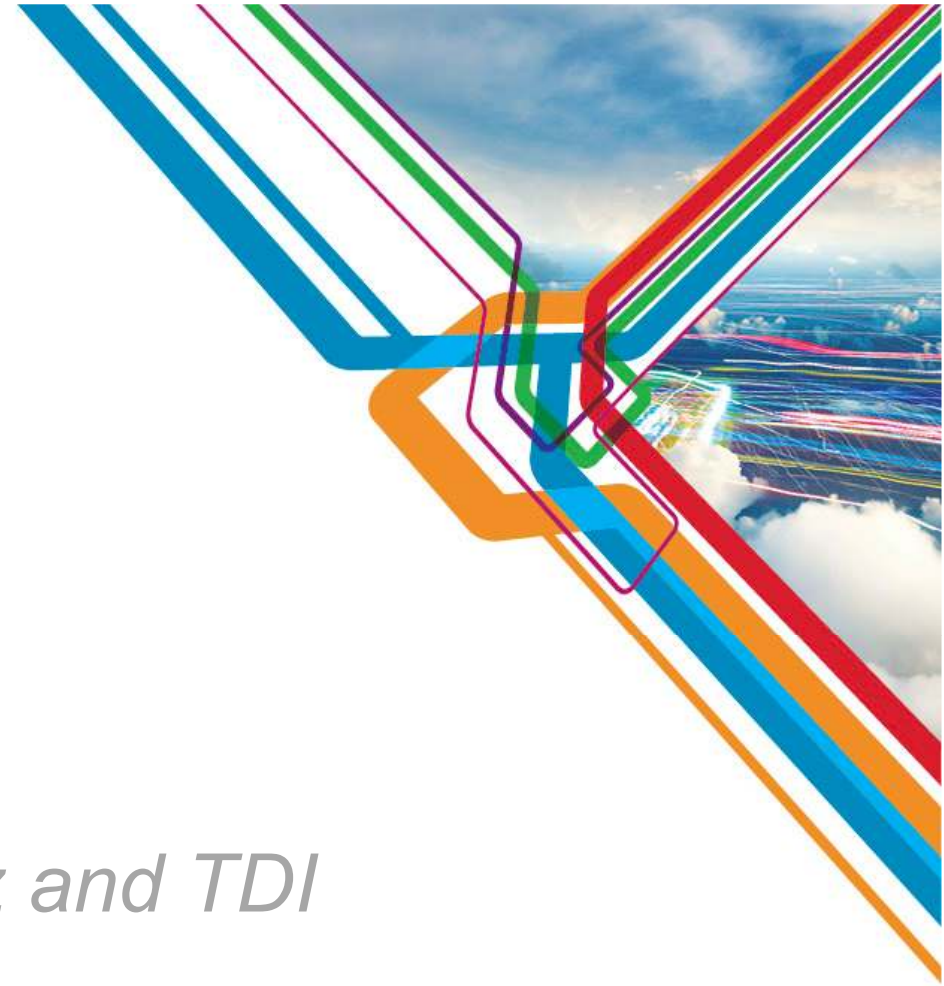
IBM SolutionsConnect 2013

Jazz SM for ITM <6.3

A customers experience with Jazz and TDI

Bryant Bernstein +61 419 323 378

2013/6/12





A Customers experience with JAZZ SM / TDI

- The Business Story
- The Technical Options
 - Technical Solution



A Customers experience with JAZZ SM / TDI

- **The Business Story**
- The Technical Options
 - Technical Solution



A Customers experience with JAZZ SM / TDI

The Business story

- National retailer
- About 3000 agents under ITM
- Some Non-Tivoli technologies
- Business needs for Dashboards
- Bling



A Customers experience with JAZZ SM / TDI

The Business story

- 2 years ago
- Focus Now
- Current on ITM 6.2.2 FP3 with possible path 6.2.3 FP1
- Driver to migrate off the last of V5x
- Upgrade of TIP



A Customers experience with JAZZ SM / TDI

- TEP





A Customers experience with JAZZ SM / TDI

- The Business Story
- **The Technical Options**
 - Technical Solution



A Customers experience with JAZZ SM / TDI

The Technical Options

TEP

TCR

TIP

APM UI

Then 6.3 landed and what is this thing called Jazz



A Customers experience with JAZZ SM / TDI

The Technical Options

	ITM 622FP3	ITM 623 fp1	ITM 63x
OLD TCR	Not Dynamic		
Previous TIP	<input type="checkbox"/>	<input checked="" type="checkbox"/> <input checked="" type="checkbox"/>	
APM UI	Focus on ITCAM		
JAZZ	Possible with TDI		<input checked="" type="checkbox"/> <input checked="" type="checkbox"/>





A Customers experience with JAZZ SM / TDI

- The Business Story
- The Technical Options
 - **Technical Solution**



A Customers experience with JAZZ SM / TDI

Technical Solution

-The installation experience



A Customers experience with JAZZ SM / TDI

Technical Solution

- The installation experience
- First look at TDI



Video shows empty TDI and creation of first CURI_ project and DS_ data source. Ends with about 40 components and the question of which one to use.



A Customers experience with JAZZ SM / TDI

Technical Solution

- The installation experience
- First look at TDI
- The Stack



A Customers experience with JAZZ SM / TDI

Technical Solution:
The Stack



IBM Software > Products > Security > Identity and access management >

Tivoli Directory Integrator





A Customers experience with JAZZ SM / TDI

Technical Solution

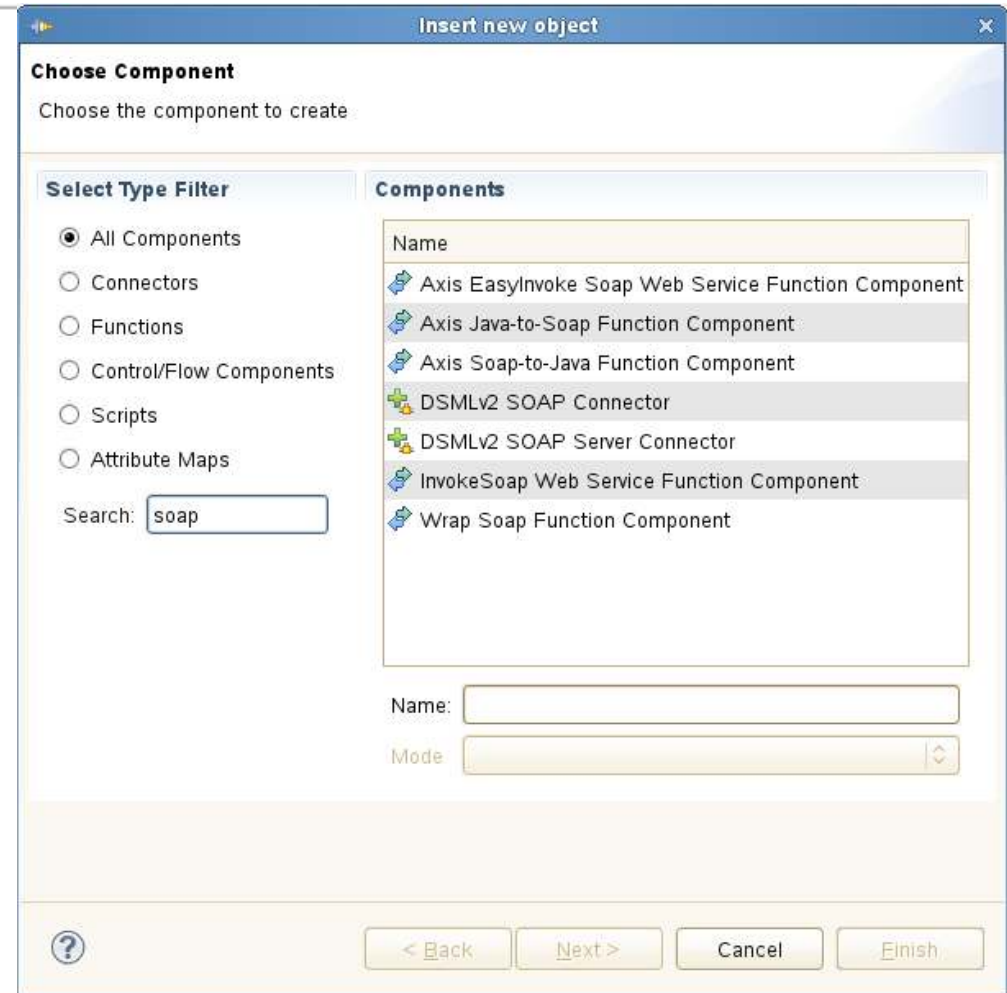
- The installation experience
- First look at TDI
- The Stack
- ITM SOAP and WSDL



A Customers experience with JAZZ SM / TDI

Technical Solution

- ITM and SOAP
- kshsoap from a TEMS
- SoapUI and WSDL



```
Terminal
File Edit View Terminal Tabs Help
Terminal
VM01:/opt/IBM/ITM/li6263/ms/bin # ls
cms          kdsmain kdstsns  kglbmrng  KGLMSENU  kshsoap  ksminst
ITMKMS0602.SYS2 kdsoper kdsvlunx kglbutl  kqmm      kshwsq  ksmoms
VM01:/opt/IBM/ITM/li6263/ms/bin #
```

Video shows kshsoap
command from tems
and ITM WSDL

```
soap_request.txt (~) - gedit
View Search Tools Documents Help
Save Print Undo Redo Cut Copy Paste Find Replace
quest.txt x urls.txt x
<userid>sysadmin</userid>
<password>object00</password>
<object>ManagedSystem</object>
>
```

Your Soap Response Payload:

Payload (XML):

Make SOAP Request

Done



A Customers experience with JAZZ SM / TDI

Technical Solution

- ITM and SOAP
- kshsoap from a TEMS
- SoapUI and WSDL
- Technology wars
 - Python Vs. Perl – JavaScript Vs. IPL



A Customer's experience with JAZZ SM / TDI

Technical Solution

- The installation experience
- First look at TDI
- The Stack
- ITM SOAP and WSDL
- My Python kshsoap

- root's Home
- Trash
- client_fdc
- jazz
- curi_bbCPU.xml
- TDI-SCRATCH

```
Terminal
File Edit View Terminal Tabs Help
Terminal
Terminal
jazzsm:~/soap # ls
kshsoap_old.py      Linux_File_Pattern.txt      Linux_Process.txt          url2.txt~
kshsoap_old.py~    Linux_Group.txt            Linux_System_Statistics.txt url.txt
kshsoap.py         Linux_Host_Availability.txt LZstatus.txt
Linux_CPU_Average.txt Linux_Machine_Information.txt MSstatus.txt
Linux_CPU.txt      Linux_OS_Config.txt        url2.txt
jazzsm:~/soap #
```

```
...py (~/.soap) - gedit
Help
Undo
kshsoap_old.py url.txt
envelope, we we add one here
oding="utf-8"?>
schemas.xmlsoap.org/soap/envelope/"
XMLSchema-instance" xmlns:xsd="http://
a result
velope so we remove it here
#the_page=detag("SOAP",the_page)
#the_page=detag("TABLE",the_page)
print(the_page)
Python Tab Width: 8 Ln 41, Col 56 INS
```



A Customers experience with JAZZ SM / TDI

Technical Solution

- The installation experience
- First look at TDI
- The Stack
- ITM SOAP and WSDL
- My Python kshsoap
- TDI Consumes ITM XML

Navigator

- CURI_MNstatus
 - AssemblyLines
 - References
 - Resources
 - Runtime-CURI_MNstatus
 - Solution Logging and Settings

DS_MNstatus

Add component Show

- weird
- Data Flow

Collapse Expand Options...

Servers

Add Server Start Stop Refresh View Lo

- Default
 - CURI_MNstatus

Insert new object

Choose the component to create

Select Type Filter

- All Components
- Connectors
- Functions
- Control/Flow Components
- Scripts
- Attribute Maps

Search: soap

Components

Name
Axis EasyInvoke Soap Web Service Function Component
Axis Java-to-Soap Function Component
Axis Soap-to-Java Function Component
DSMLV2 SOAP Connector
DSMLV2 SOAP Server Connector
InvokeSoap Web Service Function Component
Wrap Soap Function Component

Name:

Mode:

< Back Next > Cancel Finish

Problems JavaScript Console

0 items

Description	Resource	Path	Location	Type
-------------	----------	------	----------	------



A Customers experience with JAZZ SM / TDI

Technical Solution

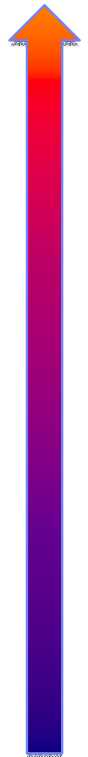
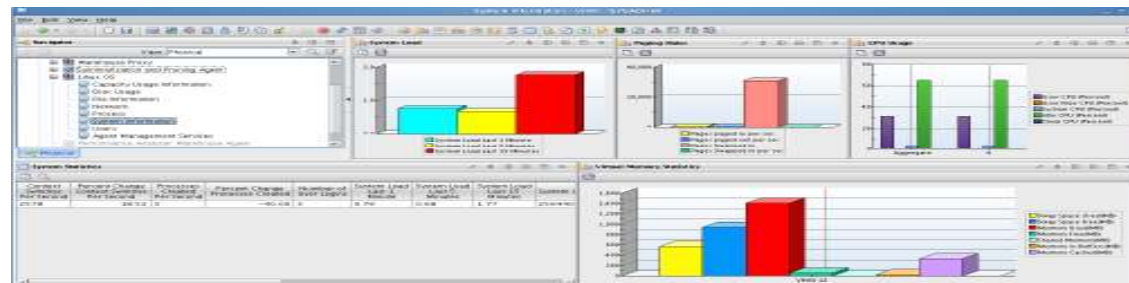
IBM Dashboard Application Services Hub

User name
smadmin

Password
••••••••

IBM Software > Products > Security > Identity and access management >

Tivoli Directory Integrator





A Customers experience with JAZZ SM / TDI

Technical Solution

- The installation experience
- First look at TDI
- The Stack
- ITM SOAP and WSDL
- My Python kshsoap
- TDI Consumes ITM XML
- DASH presents the data

Navigator

- CURI_MNstatus
 - AssemblyLines
 - References
 - Resources
 - Runtime-CURI_MNstatus
 - Solution Logging and Settings

DS_MNstatus

- Feed
 - CommandLineConnector**
 - Data Flow

Collapse Expand Options...

CommandLineConnector

Mode: State: Inherit From:

Input Map | Hooks | Delta | Connection | Parser | Connection Errors

Map

Work Attribute	Assignment
Name	conn.Name
Status	conn.Status

Schema			
Name	Sample Value	Required	Java Class
Name	VM01:LZ	Optional	java.lang.St
Product	LZ	Optional	java.lang.St
Status	*ONLINE	Optional	java.lang.St

Servers

- Default
 - CURI_MNstatus

Problems JavaScript Console

0 items

Description	Resource	Path	Location	Type
-------------	----------	------	----------	------



A Customers experience with JAZZ SM / TDI

Technical Solution



IBM Software > Products > Security > Identity and access management >

Tivoli Directory Integrator





A Customers experience with JAZZ SM / TDI

Technical Solution

- The installation experience
- First look at TDI
- The Stack
- ITM SOAP and WSDL
- My Python kshsoap
- TDI Consumes ITM XML
- DASH presents the data
- Enhance with SOAP



A Customers experience with JAZZ SM / TDI

Technical Solution

- What can we do with SOAP:

Methods	Objects
CT_Get	Linux_CPU
CT_Acknowledge	Linux_Disk_IO
CT_Activate	Linux_Network
CT_Deactivate	Linux_Process
... (see ITM Admin Guide)	... (See Agent Guide)



A Customers experience with JAZZ SM / TDI

Technical Solution

- What can we do with SOAP:

```
<CT_Get>  
<hub>SOAP</hub>  
<userid>sysadmin</userid>  
<password>object00</password>  
<object>Linux_CPU_Averages</object>
```



A Customers experience with JAZZ SM / TDI

```
<ROW>
<CPU_Usage_Current_Average dt="number">2.23</CPU_Usage_Current_Average>
<CPU_Usage_Moving_Average dt="number">2.07</CPU_Usage_Moving_Average>
<Days_to_CPU_Upgrade dt="number">0</Days_to_CPU_Upgrade>
<Idle_CPU_Current_Average dt="number">97.77</Idle_CPU_Current_Average>
<Idle_CPU_Moving_Average dt="number">97.94</Idle_CPU_Moving_Average>
<System_Name>VM02:LZ</System_Name>
<Steal_CPU_Current_Average dt="number">-0.01</Steal_CPU_Current_Average>
<Steal_CPU_Moving_Average dt="number">-0.01</Steal_CPU_Moving_Average>
<System_CPU_Current_Average dt="number">1.23</System_CPU_Current_Average>
<System_CPU_Moving_Average dt="number">1.06</System_CPU_Moving_Average>
<Timestamp>1130608173508000</Timestamp>
<User_CPU_Current_Average dt="number">1.00</User_CPU_Current_Average>
<User_CPU_Moving_Average dt="number">1.00</User_CPU_Moving_Average>
<User_Nice_CPU_Current_Average dt="number">0.00</User_Nice_CPU_Current_Average>
<User_Nice_CPU_Moving_Average dt="number">0.00</User_Nice_CPU_Moving_Average>
<Linux_VM_ID></Linux_VM_ID>
<Wait_CPU_Current_Average dt="number">0.00</Wait_CPU_Current_Average>
<Wait_CPU_Moving_Average dt="number">0.00</Wait_CPU_Moving_Average>
</ROW>
```



A Customers experience with JAZZ SM / TDI

Technical Solution

- What can we do with SOAP:

```
<CT_Get>  
<hub>SOAP</hub>  
<userid>sysadmin</userid>  
<password>object00</password>  
<object>Linux_CPU_Averages</object>  
<attribute>System_Name</attribute>  
<attribute>CPU_Usage_Current_Average</attribute>  
</CT_Get>
```




A Customers experience with JAZZ SM / TDI

```
<OBJECT>Linux_CPU_Averages</OBJECT>
<DATA>
<ROW>
<System_Name>VM02:LZ</System_Name>
<CPU_Usage_Current_Average dt="number">2.59</CPU_Usage_Current_Average>
</ROW>
<ROW>
<System_Name>VM01:LZ</System_Name>
<CPU_Usage_Current_Average dt="number">3.19</CPU_Usage_Current_Average>
</ROW>
</DATA>
```



A Customers experience with JAZZ SM / TDI

```
<OBJECT>Linux_CPU_Averages</OBJECT>
<DATA>
<ROW>
<System_Name>VM02:LZ</System_Name>
<CPU_Usage_Current_Average dt="number">2.59</CPU_Usage_Current_Average>
</ROW>
<ROW>
<System_Name>VM01:LZ</System_Name>
<CPU_Usage_Current_Average dt="number">3.19</CPU_Usage_Current_Average>
</ROW>
</DATA>
```

```
<OBJECT>Linux_VM_Stats</OBJECT>
<DATA>
<ROW>
<System_Name>VM02:LZ</System_Name>
<Real_Memory_Pct_Used dt="number">97</Real_Memory_Pct_Used>
</ROW>
<ROW>
<System_Name>VM01:LZ</System_Name>
<Real_Memory_Pct_Used dt="number">96</Real_Memory_Pct_Used>
</ROW>
</DATA>
```



A Customers experience with JAZZ SM / TDI

Technical Solution

- The installation experience
 - First look at TDI
 - The Stack
 - ITM SOAP and WSDL
 - My Python kshsoap
 - TDI Consumes ITM XML
 - DASH presents the data
 - Enhance with SOAP
- Using more soap

File Edit Navigate Search Project Run Window Help

- New Shift+Alt+N >
- Open Tivoli Directory Integrator configuration file...
- Open File...
- Close Ctrl+W
- Close All Shift+Ctrl+W
- Save Ctrl+S
- Save As...
- Save All Shift+Ctrl+S
- Revert
- Move...
- Rename... F2
- Refresh F5
- Convert Line Delimiters To >
- Print... Ctrl+P
- Switch Workspace >
- Restart
- Import...
- Export...
- Properties Alt+Enter

- 1 DS_MNstatus.assemblyline [CURI_MNst...]
- 2 DS_bb1.assemblyline [CURI_BB1/...]
- 3 CURI_LZ_Status.tdiproperties [CURI_...]
- 4 CURI_LZ_Status.xml [CURI_LZ_Status/...]

Exit

Browse Server Stores

Show mapping Options... Run in console Debugger

Map Add Delete Browse Data

Work Attribute	Assignment	Component Attribute
CommandLineConnector		[Source]
Name	conn.Name	Name
Status	conn.Status	Status

Options...

JavaScript Console

Resource	Path	Location	Type
----------	------	----------	------



A Customers experience with JAZZ SM / TDI

Technical Solution

- The installation experience
- First look at TDI
- The Stack
- ITM SOAP and WSDL
- My Python kshsoap
- TDI Consumes ITM XML
- DASH presents the data
- Enhance with SOAP
- Using more soap
- Attribute map in TDI

Navigator

- CURI_mem
- CURI_MNstatus

Servers

Default

- CURI_mem

DS_mem

Add component Show mapping Options... Run in console Debugger

- Feed
 - CommandLineConnector
- Data Flow
 - AttributeMap

AttributeMap

Inherit From [no inheritance]

Map Add Delete More...

Work Attribute	Assignment
Real_Memory_Pct_Used	return parseInt(work.Real_Memory_Pct_Used)

AttributeMap.Real_Memory_Pct_Used Substitution text Enabled Null Value Behavior Close

```
return parseInt(work.Real_Memory_Pct_Used)
```

Collapse Expand Options...

Video creating assembly – CPU gauge and scripted data type conversion.

Problems JavaScript Console

0 items

Description	Resource	Path	Location	Type
-------------	----------	------	----------	------



A Customers experience with JAZZ SM / TDI

Technical Solution

- The installation experience
- First look at TDI
- The Stack
- ITM SOAP and WSDL
- My Python kshsoap
- TDI Consumes ITM XML
- DASH presents the data
- Enhance with SOAP
- Using more soap
- Attribute map in TDI
- Script a type conversion

What's up

Name	Status
VM01:LZ	*ONLINE
VM02:LZ	*ONLINE

Total: 2 Selected: 0

List Widget

Filter

VM01:LZ	*ONLINE
VM02:LZ	*ONLINE

Mem used



Root File System



CPU Gauge





A Customers experience with JAZZ SM / TDI

Technical Solution

- The installation experience
- First look at TDI
- The Stack
- ITM SOAP and WSDL
- My Python kshsoap
- TDI Consumes ITM XML
- DASH presents the data
- Enhance with SOAP
- Using more soap
- Attribute map in TDI
- Script a type conversion
- An Interactive experience

What's up

Status	System_Name
*ONLINE	VM02:LZ
*ONLINE	VM01:LZ

Click to Expand

Total: 2 Selected: 1

Mem used



Root FileSystem



Video showing interactive – click on node

List Widget

Search

VM02:LZ	*ONLINE
VM01:LZ	*ONLINE

CPU Gauge





A Customers experience with JAZZ SM / TDI

Technical Solution

- The installation experience
- First look at TDI
- The Stack
- ITM SOAP and WSDL
- My Python kshsoap
- TDI Consumes ITM XML
- DASH presents the data
- Enhance with SOAP
- Using more soap
- Attribute map in TDI
- Script a type conversion
- An Interactive experience
- More bling



Pulse Down Under 2013

What's up

Status	System_Name
*ONLINE	VM01:LZ
*ONLINE	VM02:LZ

Total: 2 Selected: 0

Mem used



Root FileSystem



CPU Gauge



List Widget

Search

- VM01:LZ
*ONLINE
- VM02:LZ
*ONLINE



A Customers experience with JAZZ SM / TDI

Technical Solution

- The installation experience
- First look at TDI
- The Stack
- ITM SOAP and WSDL
- My Python kshsoap
- TDI Consumes ITM XML
- DASH presents the data
- Enhance with SOAP
- Using more soap
- Attribute map in TDI
- Script a type conversion
- An Interactive experience
- More bling



A Customers experience with JAZZ SM / TDI

- The Business Story
- The Technical Options
 - Technical Solution



A Customers experience with JAZZ SM / TDI

- Supporting Materials:

- Attribute map used : `return parseInt()`

- String to double script used:

- `ba = conn.getString("BUSYCPU");`
`conn.setAttribute("BUSYCPU", java.lang.Double.valueOf(ba));`
`return conn.BUSYCPU`

- Interactive script: (logging removed for brevity)

```
task.logmsg("@@@@@@@@@@This is the OP entry@@@@@@@@@@@@");
```

```
task.dumpEntry(task.getOpEntry());
```

```
task.logmsg("*****This is the http patams received*****");
```

```
var params = task.getOpEntry().getObject("http_params");
```

```
task.logmsg("Parameters are " + params);
```

```
if (params != null){    systemName = params.getString("param_System_Name");}
```

```
if(systemName != null){ if(work.System_Name == systemName){ task.logmsg("Received request  
for " + systemName) }else{    system.skipEntry();    } }
```



A Customers experience with JAZZ SM / TDI

Contributors and collaborators

- Tze Ping Yeo
- Chris Frost
- Shikha Srivastava
- Laquicia S Barbee
- Mark Anderson
- Vijay R Kalangumvathakkal
- Ashish K Thakur
- Gil Arnold