



Pulse2011



Maximo Product Update and Roadmap

Anthony Honaker
Asset Management Product Strategy,
Design & Architecture

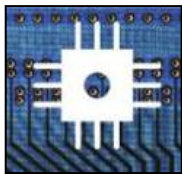
Please note:

IBM's statements regarding its plans, directions, and intent are subject to change or withdrawal at IBM's sole discretion. Information regarding potential future products is intended to outline our general product direction and it should not be relied on in making a purchasing decision.

The information mentioned regarding potential future products is not a commitment, promise, or legal obligation to deliver any material, code or functionality. Information about potential future products may not be incorporated into any contract. The development, release, and timing of any future features or functionality described for our products remains at our sole discretion.



Maximo - Asset Management for a Smarter Planet



INSTRUMENTED

We now have the ability to measure, sense and see the exact condition of practically everything in near real-time.

INTERCONNECTED

People, buildings, plants, vehicles, campuses, cities, etc. are now interacting in entirely new ways.

INTELLIGENT

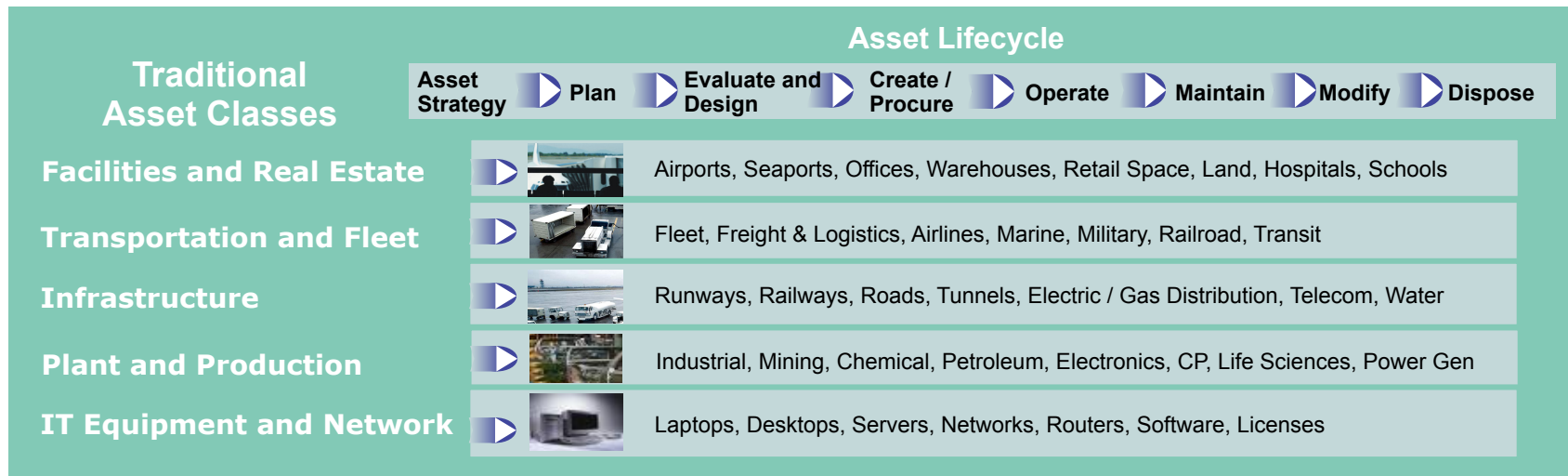
All this information can be used to make optimal decisions that are based on historical trends and predicted events.

SMARTER

We can gather, synthesize and apply this information to achieve financial, environmental and operational benefits.



Smart is: Delivering Total Asset Lifecycle Management



▪ **Drivers of Asset Management for A Smarter Planet:**

- The emergence of pervasive devices, embedded chips, RFID, sensors, detectors and IP addresses attached to enterprise assets
- Need to measure and manage the availability and use of all strategic assets
- Improved risk management across the enterprise



Maximo Development Principle: Drive Higher Customer Value

Objectives

- [Enhance Maximo](#) best-in-class capabilities and solutions
- [Drive innovation](#) with input from customer groups, advisory councils and business partners
- Continue to produce [High Quality](#) products; leverage customer input during every step of the development cycle
- [Protect customer investment](#); upgrades to future Maximo versions
- Commit to [Open Standards](#): J2EE, SOA
 - both IBM and non-IBM platform components



Maximo Development Focus

- Continue to [Enhance Version 7](#) core capabilities, architecture, platform and technology
- [Incremental Features](#) and Value-add capabilities to extend Version 7
- Expand deep [Industry Solution](#) functionality and new Growth areas such as:
 - Intelligent Buildings
 - Safety, Risk and Compliance
 - Facilities Management/Space Planning
- [Leverage IBM products](#) and technology



2010 Roadmap Highlights

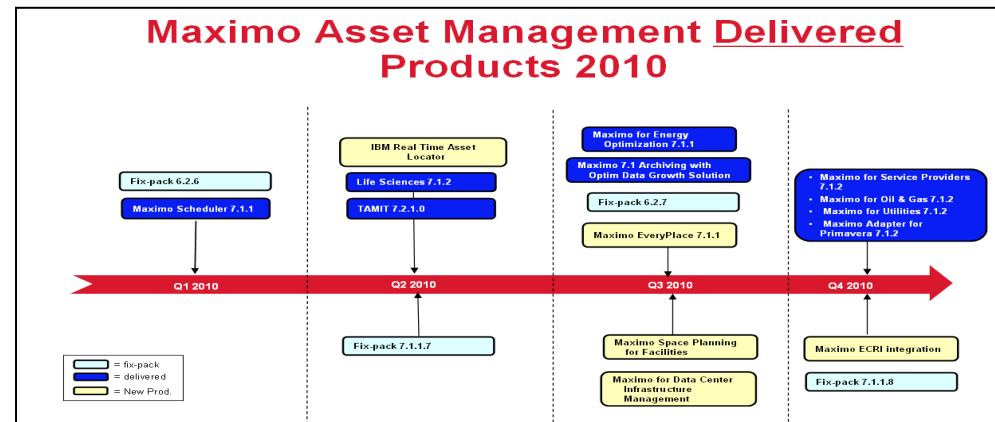
We had a very busy year.....

▪ 9 Product Releases

- Improvements to 4 add ons
 - Scheduler
 - Archiving
 - Everyplace
 - Primavera Adapter
- Improvements to 5 Industry Solutions
 - Service Provider
 - Internal Service Provider
 - Oil and Gas
 - Utilities
 - Life Sciences

▪ 4 new products released

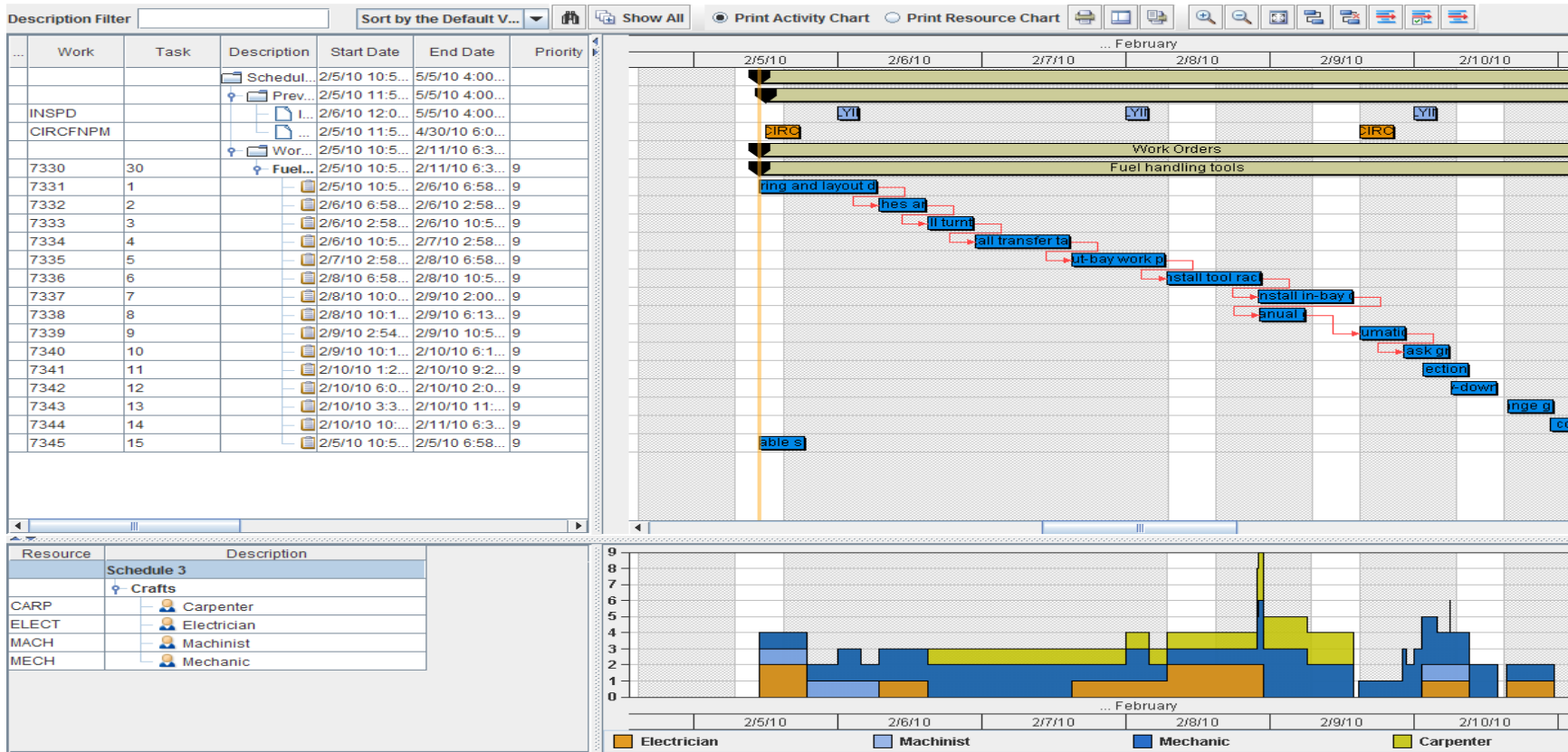
- Maximo for Space Planning
- Maximo for Data Center Infrastructure Management
- Maximo Real Time Asset Locator
- Maximo Everyplace



- **New Maximo Content added and available for download**
 - Maximo ECRI integration for Healthcare

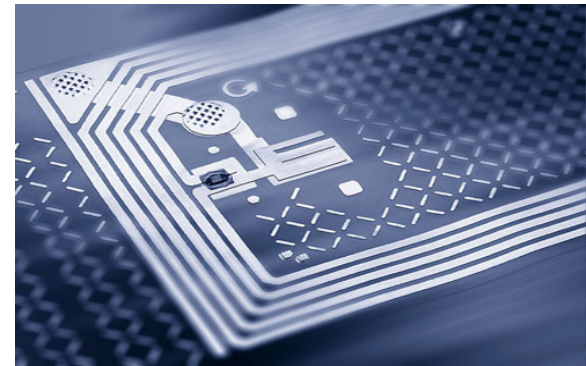
Note: Other content for download includes Maximo FileNet integration and Maximo ITM for monitoring





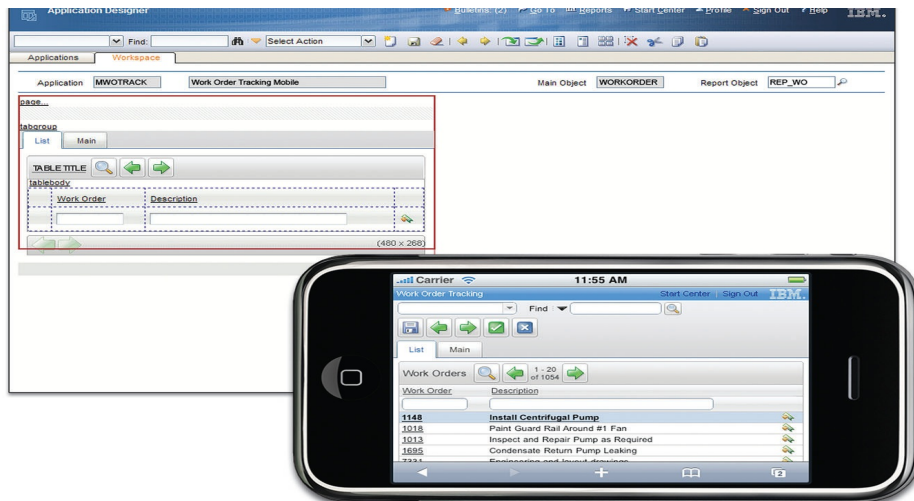
Real-time Asset Locator

- IBM Maximo Real-time Asset Locator allows Maximo customers to manage and trigger Asset events based on the real-time location of an asset from within the Maximo Asset Management
- IBM Maximo Real-time Asset Locator provides Maximo clients the ability to access the location of assets using RFID and other supported real-time location technologies. Support for multiple sensor solutions (Ultrasound, RFID, WiMax, etc.)
- Improves compliance support in highly regulated markets where events must be triggered based on locations.
- In highly regulated industries, like Healthcare and Life Sciences, the location of assets may trigger specific service management and disposition rules



IBM Maximo Everyplace

Allows users to access any existing IBM Maximo application on an iPhone, iPad, iPod touch, Android or other supported device without installing anything on those devices



Maximo Everyplace enables users to:

- Shorten the lag time between an event's occurrence and the recording of that event in the system. There's no need to wait until they get back to their desk to enter or retrieve data.
- Increase accuracy of data in the system by allowing them to enter information while it's fresh in their minds.
- Offer convenient, targeted access to Maximo for workers who don't regularly sit at a desk or use a desktop computer.



A decorative graphic on the left side of the slide consists of several vertical lines in red, orange, and grey, with a circuit-like pattern of black lines and white circles connecting them.

Pulse2011

Facilities Management on a Smarter Planet

The need for progress is clear

2

Real estate is the second largest expense on the income statement for most companies.

3

In most organizations the real estate portfolio is on the balance sheet as the third most valuable or expensive single asset.

30 percent

Facilities investments and operating costs can be more than 30% of corporate annual spending.

2025

By 2025, buildings worldwide will become the top energy consumers.

42 percent

Worldwide, buildings consume 42% of all electricity – up to 50% of which is wasted.

1

Buildings are the number 1 contributor to global CO2 emissions.



Maximo's History in Facilities Management

- Maximo has been providing Facilities Management solutions to large enterprises across various industries for almost two decades
- Historically, Maximo has focused on the Facilities Maintenance portion of the Facilities Management market
- Maximo is the market leader with 25% market share *
- A long-standing Facilities Management Users Group with over 600 active members

Representative Customers -

- *JCI*
- *UNNICO*
- *McCarran Airport*
- *General Dynamics*
- *LAUSD*
- *Woolworths*
- *The Venetian*
- *Target*
- *IBM RESO*
- *US National Parks*
- *Purdue University*
- *Calgary Catholic School District*
- *Alberta Health*
- *Brookhaven National Labs*
- *GSA*



* ARC EAM/CMMS Solutions Worldwide Outlook, July 2009

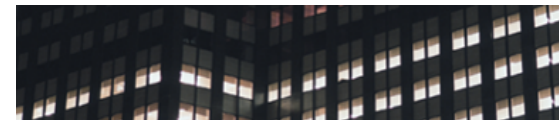
13 .. extends facilities maintenance to facilities management



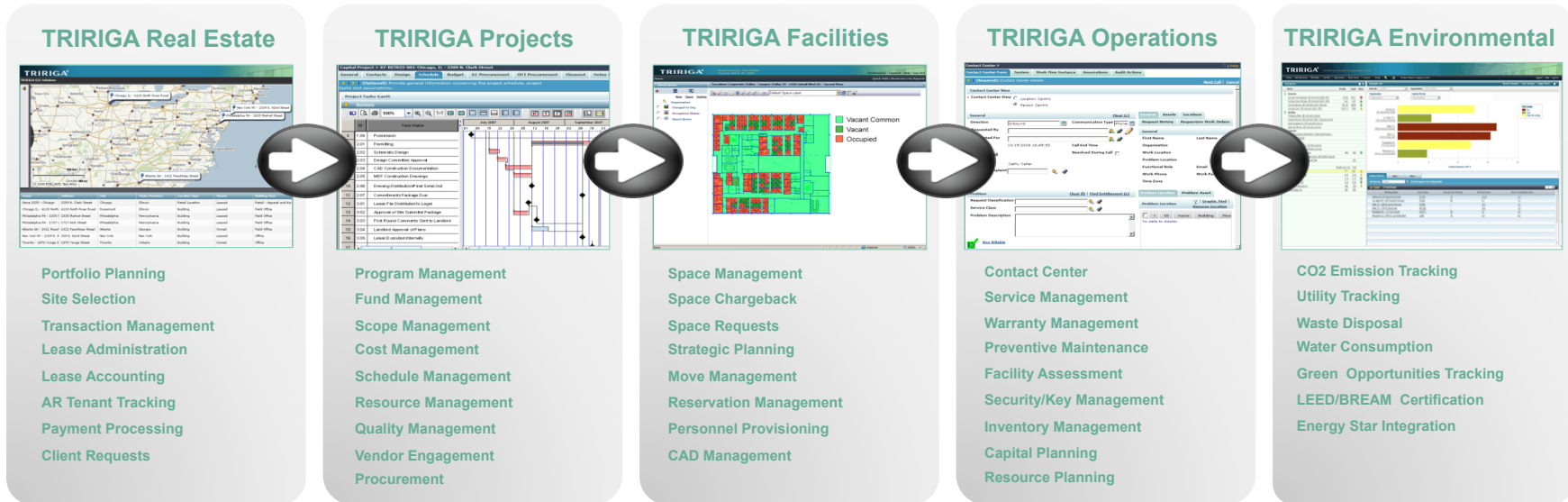
TRIRIGA Corporate Overview

TRIRIGA is a leading provider of software solutions for Integrated Workplace Management Systems (IWMS)

- Helping customers meet challenges in real estate portfolio management, capital project management, and energy and sustainability management
- Innovative TRIRIGA Real Estate Environmental Sustainability (TREES) solution drives lower energy consumption and emissions; recognized for industry leadership
- Founded in 2000
- Over 200 customers across industries with strong success in public sector and financial services
- Corporate headquarters in Las Vegas, NV with offices in Silicon Valley and Philadelphia, PA
- Privately held organization with approximately 200 employees



TRIRIGA Workplace Lifecycle Solution



TRIRIGA Core Services

Geographies

Locations

Organizations

Vendors

People

Specifications

Assets

Contracts

Receiving

Invoicing

Requests

Tasks

Customer Self Service

News

Graphics

Document Management

Reporting

WPM Metrics

GIS Mapping

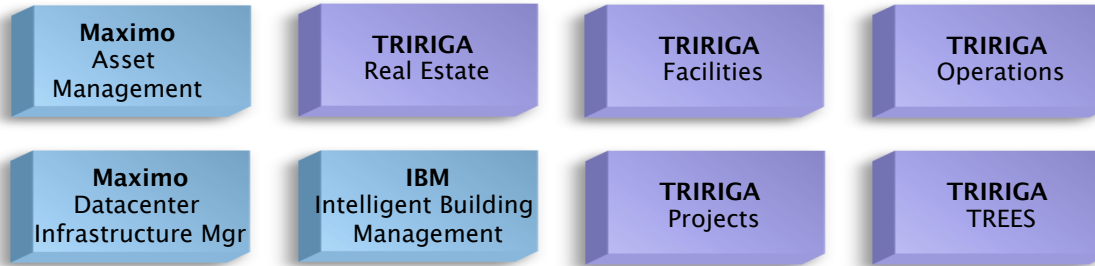
GANNT Schedules



Maximo and TRIRIGA Solutions

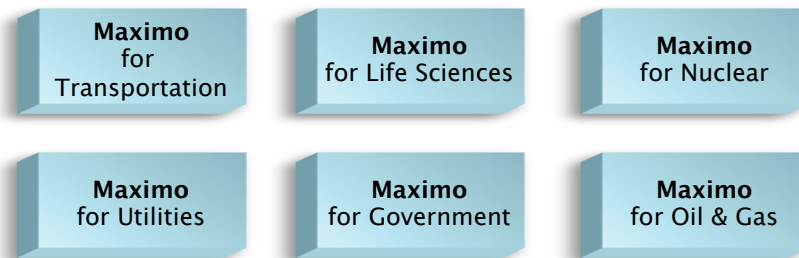
Core Solutions

Stand-alone solutions for asset, facility and real estate management.



Industry Solutions

Industry-specific capabilities for the unique requirements of asset-intensive industries.



Maximo and TRIRIGA Solutions

★ = planned for Q4 availability

Add-on Solutions

Additional options, used with core or industry solutions, provide deeper functionality for specific needs.



Integration Adapters

Commercially-supported integration to other enterprise and 3rd party systems.



TRIRIGA and IBM will address a total view of facilities and real estate management

Seven closely-connected sets of business functions are needed to reduce real estate costs and improve facilities operations.

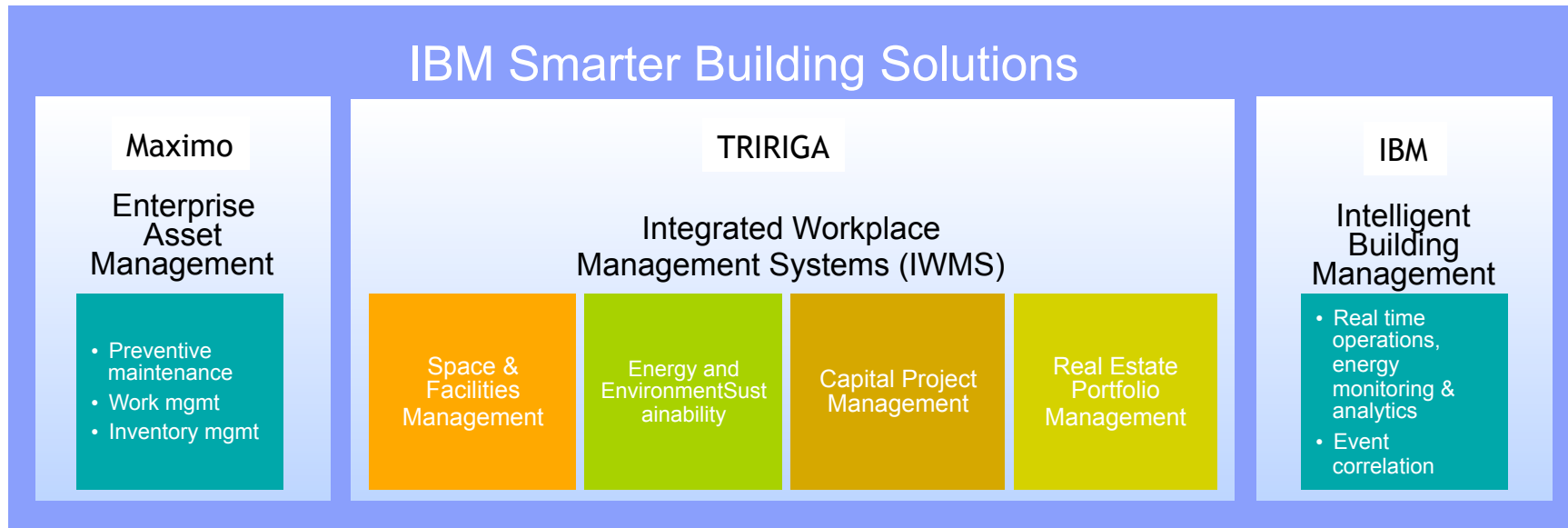
Critical business processes address the total building life cycle from construction, design, and project management to leasing, portfolio management, datacenter infrastructure management, maintenance management, energy and environmental sustainability and asset disposition.

Operations Management	Service Management	Datacenter Infrastructure Management	Space & Facilities Management	Energy and Environment Sustainability	Capital Project Management	Real Estate Portfolio Management
<ul style="list-style-type: none"> • Asset mgmt • Work mgmt • Inventory mgmt • Supply chain • Contracts • Key mgmt 	<ul style="list-style-type: none"> • Facilities service desk • Service level agreements • Contracted services • Customer billing 	<ul style="list-style-type: none"> • Space, power and cooling optimization • Allocation planning • Move, Add, Change 	<ul style="list-style-type: none"> • Space utilization • Capacity planning • Move, add, change • Reservations 	<ul style="list-style-type: none"> • Utility tracking • Environmental opportunity analysis • Carbon output measurement 	<ul style="list-style-type: none"> • Condition assessment • Capital planning • Budgeting • Construction estimates • Project mgmt 	<ul style="list-style-type: none"> • Strategic RE portfolio planning • Budgeting & forecasting RE expense drivers • Lease & contract admin



TRIRIGA and Maximo combine facility, real estate and enterprise asset management

IBM combines leadership solutions in two markets - Enterprise Asset Management and Integrated Workplace Management Systems (IWMS) - to create comprehensive Smarter Building solutions.

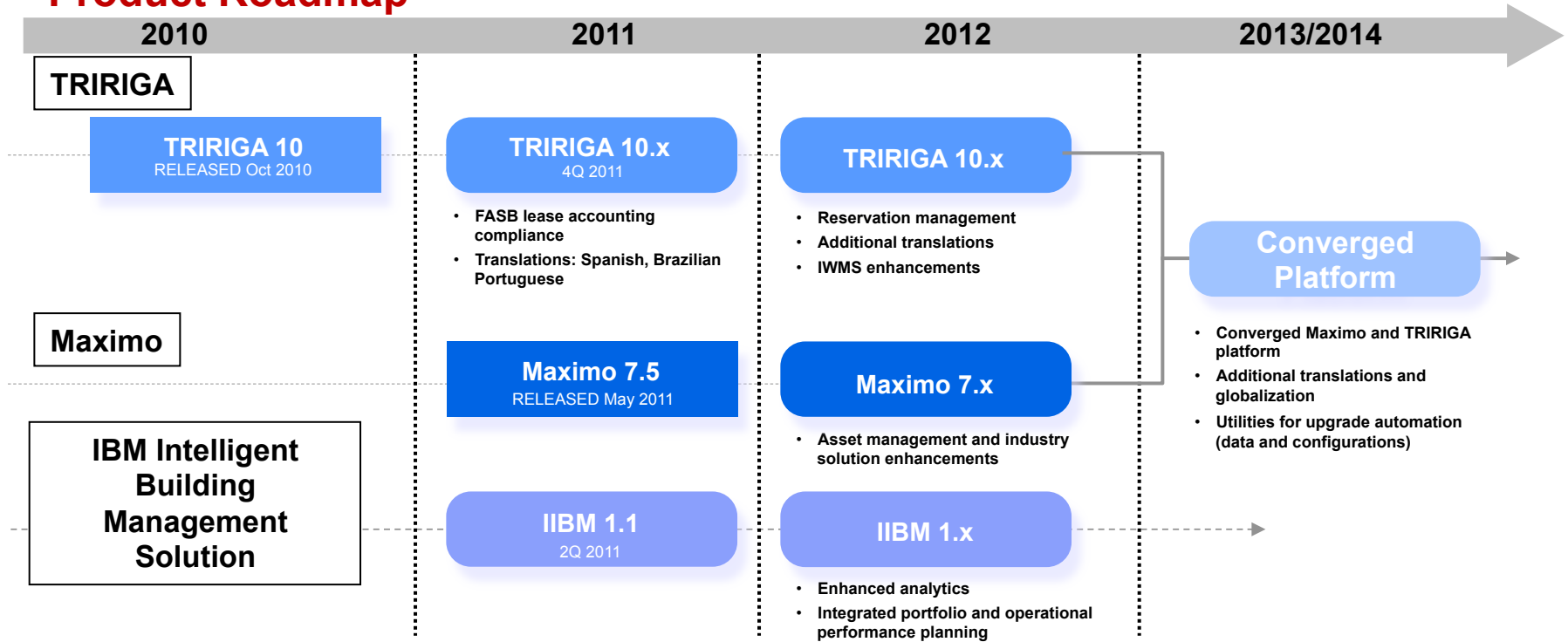


Maximo and TRIRIGA Product Strategy

- Investment in both Maximo and TRIRIGA solutions will continue with enhancements delivered in new future versions
 - New versions of TRIRIGA 10 are planned for release in 2011 and 2012
- Maximo and TRIRIGA capabilities will ultimately converge into a single platform with a common architecture, one underlying database, and one business process automation engine
- The converged product will offer customers the Maximo Enterprise Asset Management (EAM) capabilities combined with the breadth of the TRIRIGA Integrated Workplace Management Systems (IWMS) capabilities into a single comprehensive solution for managing facilities, real estate, energy and environmental sustainability
- Convergence will benefit from a legacy of similar design philosophy of both Maximo and TRIRIGA
 - Both are J2EE Java-based and web-architected
 - Same approach to use of meta-data that preserves configuration data
 - Similar use of role-based user experience
- IBM expects to offer customers an upgrade experience from their current Maximo or TRIRIGA implementations to the converged platform that is similar to a typical upgrade process
- IBM intends to provide automation utilities and tools to move data and configurations, enabling a faster and more efficient upgrade process



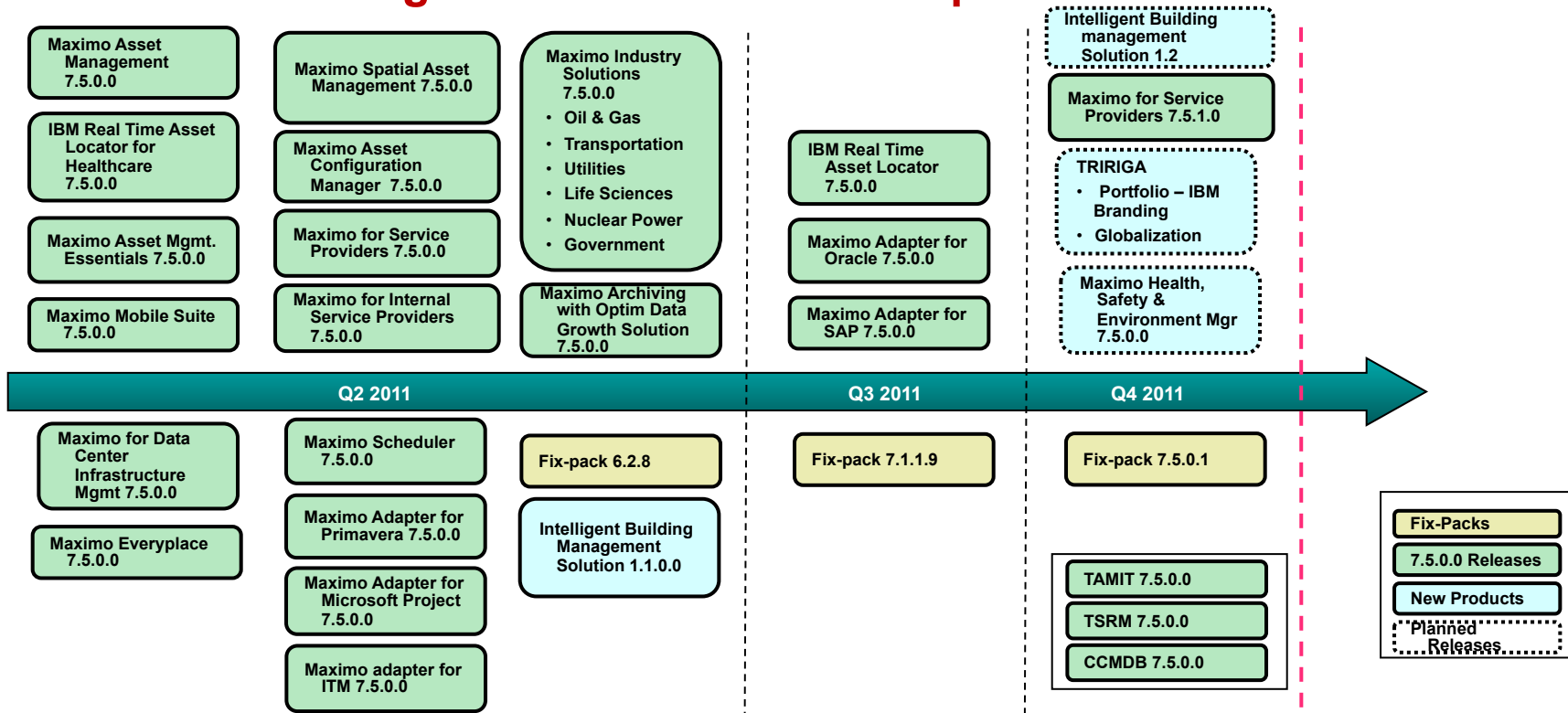
Facilities, Real Estate, Energy and Environmental Sustainability Product Roadmap



The information on the new product is intended to outline our general product direction and it should not be relied on in making a purchasing decision. The information on the new product is for informational purposes only and may not be incorporated into any contract. The information on the new product is not a commitment, promise, or legal obligation to deliver any material, code or functionality. The development, release, and timing of any features or functionality described for our products remains at our sole discretion.



2011 Asset Management Product Roadmap



The information on the new product is intended to outline our general product direction and it should not be relied on in making a purchasing decision. The information on the new product is for informational purposes only and may not be incorporated into any contract. The information on the new product is not a commitment, promise, or legal obligation to deliver any material, code or functionality. The development, release, and timing of any features or functionality described for our products remains at our sole discretion.

Representative Corporate Mission Statements

ExxonMobil

Taking on the world's toughest energy challenges™



“ExxonMobil is committed to conducting business in a manner that protects and promotes the safety and health of our employees, those involved with our operations, and the communities where we work”



“Demanding that everything we do leads to a cleaner, healthier, and safer environment”



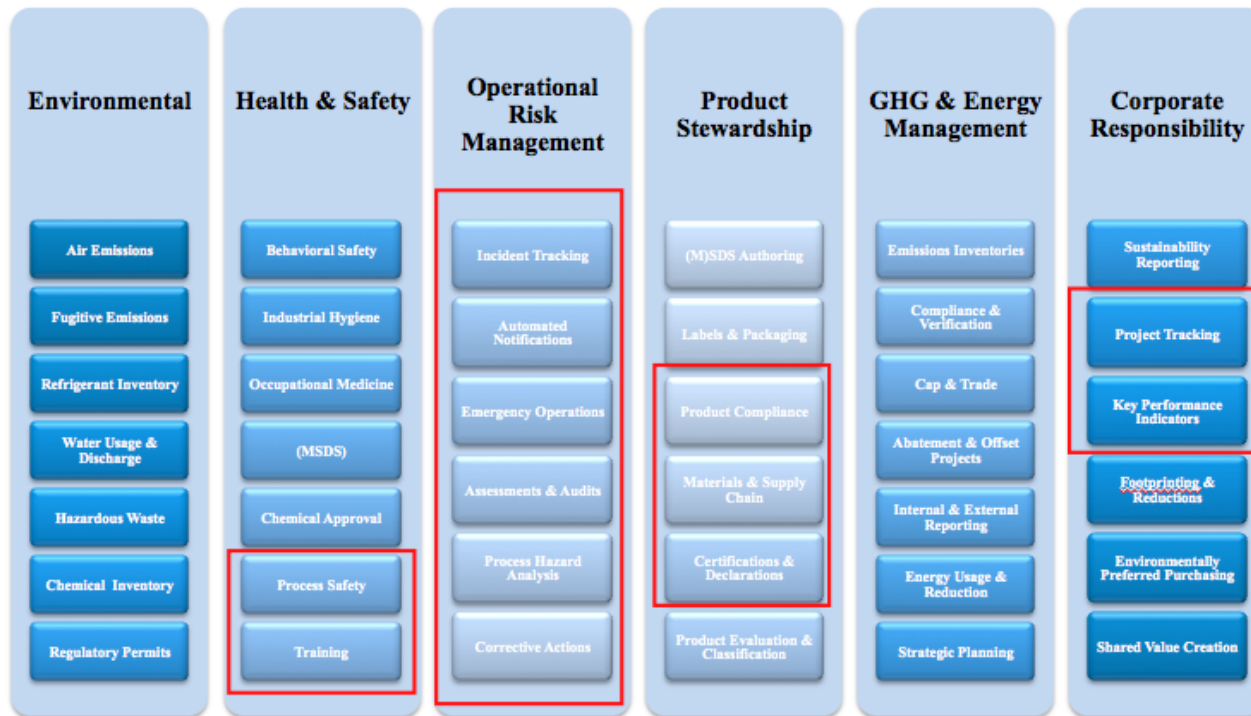
“ADM is committed to the safety of our colleagues, contractors, and business partners. ADM is also achieving notable gains in the area of Total Process Safety – the approach we take to help minimize the risk of incidents at our facilities”



“Our #1 priority – Be among the best industrial companies in safety by ensuring a safe and healthy work environment for our stakeholders”



HSE/Sustainability has over 40 Key Focus Areas



IT Requirements:

- A **central repository or database** for all product compliance information and a global system of record, with an understanding of the history, quality, and context of that data
- A **rules or workflow-based system** to ensure that procedures are followed, with the ability to identify specific events or exceptions.
- **Integration with other applications** or data sources such as ERP or materials or order management.
- **Reporting or analytics.**



Maximo Health, Safety and Environment Manager

Unparalleled HS&E capabilities for:

- Incident Management
- Investigations
- Change Management
- Non-conformance Management
- Competency Management
- Operating Policy
- Operating Procedures
- Operators Log
- Training Tracking
- Action Tracking
- Benefits & Losses
- Failure Reporting
- Improvements
- Regulatory Compliance
- Risk Assessments
- Risk Matrices
- Solutions
- Defect Elimination



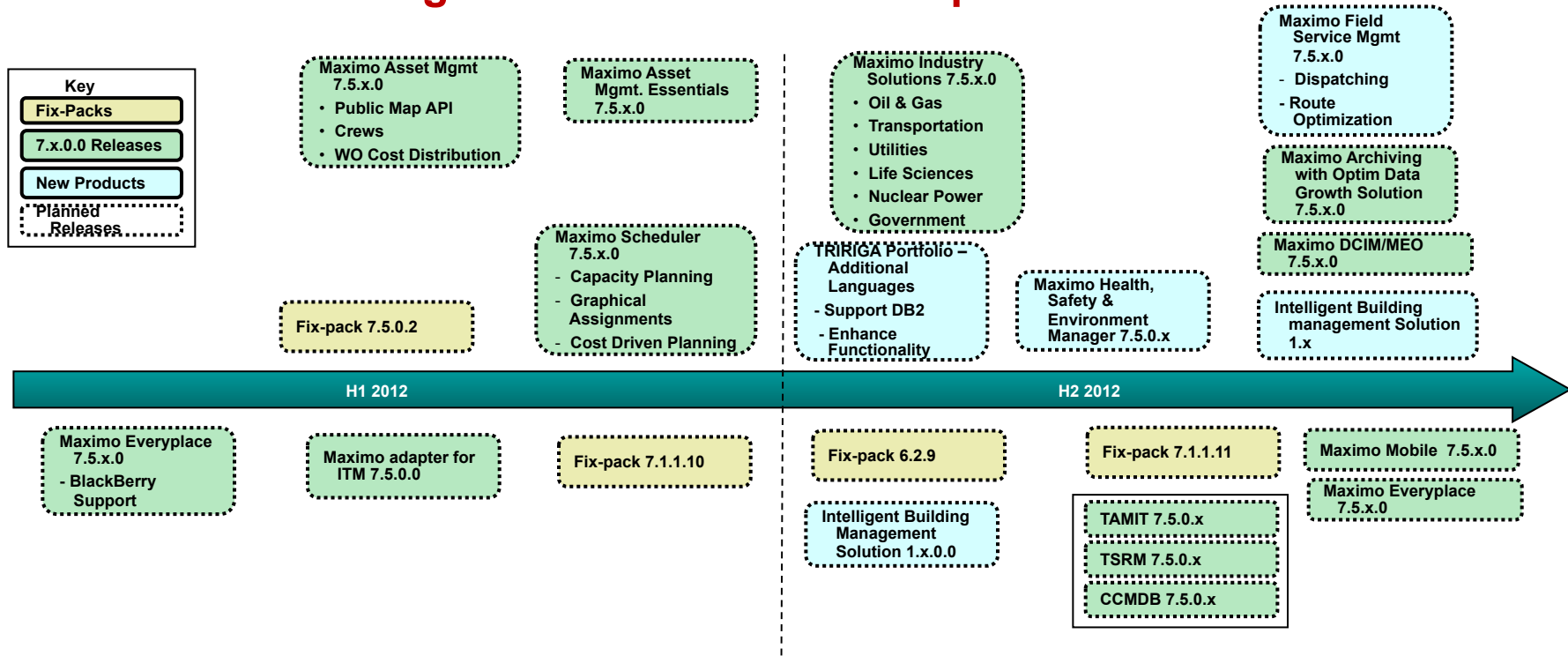
The primary objective of Health, Safety & Environment initiatives is to reduce overall risk, to comply with Federal, State and local regulations, and to create a safe yet efficient operating environment for a company.

Achieving this objective is as much about standardizing HS&E practices as integrating these practices with day-to-day operations management.

Maximo HSE Manager provides a foundational enterprise platform that integrates Health, Safety, and Environment processes with work and asset management.



2012 Asset Management Product Roadmap



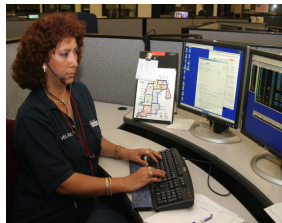
The information on the new product is intended to outline our general product direction and it should not be relied on in making a purchasing decision. The information on the new product is for informational purposes only and may not be incorporated into any contract. The information on the new product is not a commitment, promise, or legal obligation to deliver any material, code or functionality. The development, release, and timing of any features or functionality described for our products remains at our sole discretion.

Enhancing Scheduling & Mobile Workforce Management

Roles to Focus On



Planner / Scheduler

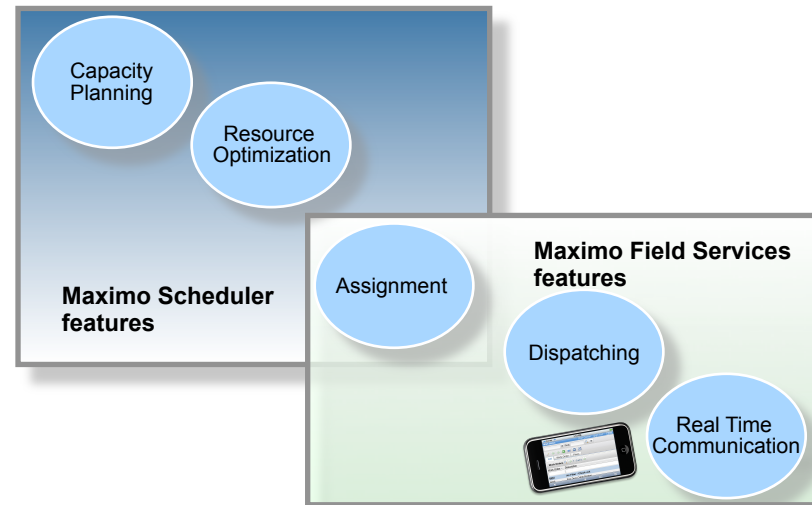


Dispatcher



Mobile Workforce

Capabilities to Address



What's Now?.....

Maximo 7.5 !



Maximo 7.5 – 3 Major Areas of Focus

<p>1. New & Enhanced Supply Chain Management</p> <ul style="list-style-type: none">• PO/PR/RFQ/Invoicing• Inventory/Receiving	<ul style="list-style-type: none">• Expanded Capabilities• Customer Driven Requirements<ul style="list-style-type: none">•Satisfy Functional gaps•Improved Usability/Maintainability•Address Integration/ERP
<p>2. Return on Investment</p> <ul style="list-style-type: none">• Automation Scripts• Application data Import/Export• Enhanced Migration Manager• Usability & Performance	<ul style="list-style-type: none">• Additional Configuration• Lower Cost of Implementation• Lower Cost of Ownership<ul style="list-style-type: none">• Easier to configure & support
<p>3. Continued Leadership and Innovation in EAM</p> <ul style="list-style-type: none">• Enhanced Work & Asset Management• Linear Asset Visual Control	<ul style="list-style-type: none">• Deep Vertical Functionality• Improved End-User interaction





Pulse2011



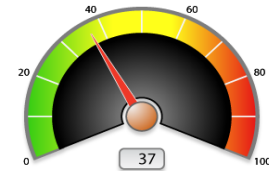
Additional Functionality

Continuing our innovation and leadership in the EAM market

Maximo Functionality available on ISM Library (formerly OPAL) or through Support web site

Available from IBM download site and is free to use for customers

ITM for Maximo: Available for 6.2,x, 7.1 and 7.5
Used for monitoring performance of Maximo environment (search Support website for: Maximo Monitoring)

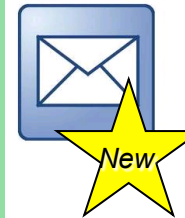


ECRI Interface: Available on 7.1 and 7.5

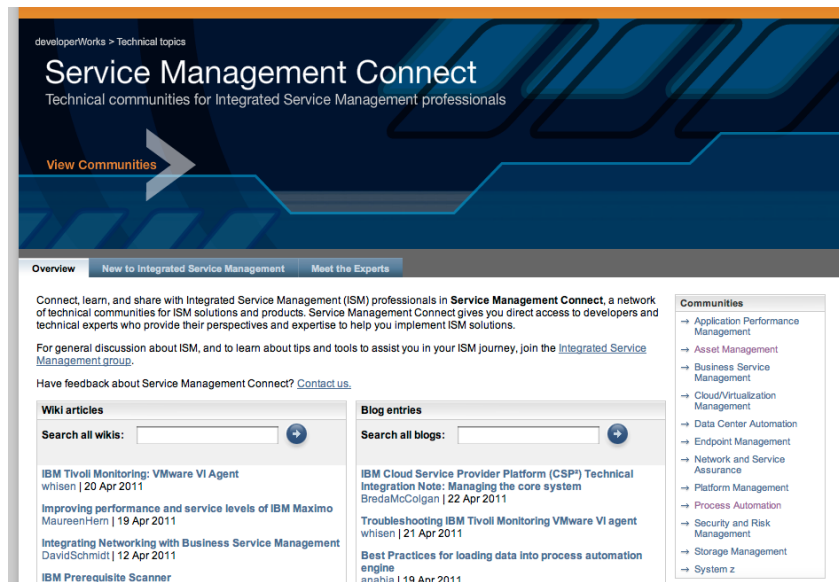
Provides real-time access to the AlertsTracker, a repository for hazard and recall alerts on medical devices. Identifies, within Maximo, any equipment on the hospital's inventory under a hazard and recall alert. (download from ISM Library)

Email for Maximo: Available on 7.1 and 7.5

Generates an email based on any condition. Receive a reply to update a record in Maximo. Send a confirmation email. Ideal for Work Order status updates and Approvals, workflow approvals. Works with BlackBerry or any email capable device (download from ISM Library)



Introducing Service Management Connect



Communities and Groups
Inviting clients to join provide their feedback



Blogs
Sharing perspectives and highlighting new content



Profiles
Providing access to a wide range of ISM skills



Forums
Assisting clients with their technical questions




Wikis
Creating and updating best practices



Files
Sharing key files and presentations

Architecture

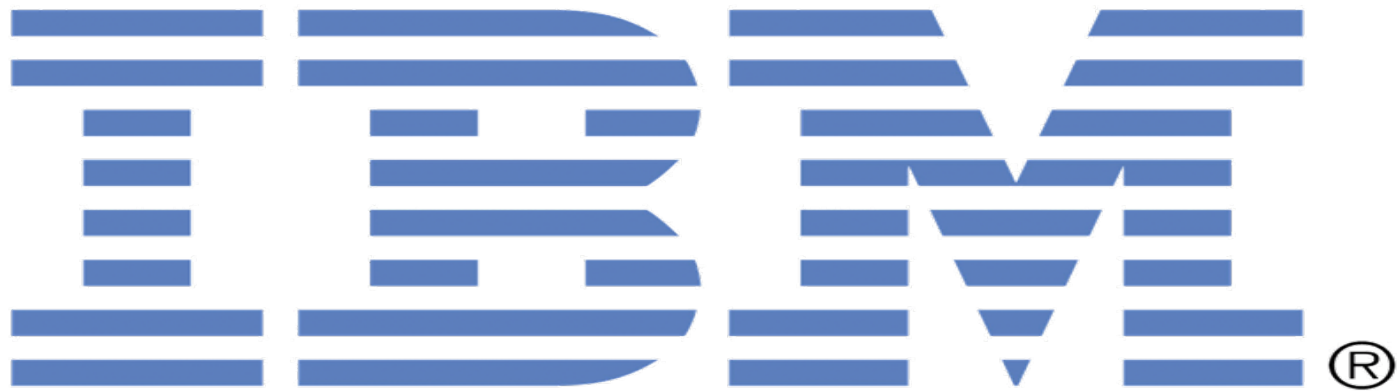


Pam Denny
Pam Denny is a Software Architect for Tivoli within IBM's Software Group. She is responsible for the Business Intelligence functionality within the Maximo product lines, which includes application analysis, KPIs and reporting.

[→ Pam's developerWorks profile](#)

<https://www.ibm.com/developerworks/servicemanagement/>





Trademarks and disclaimers

© Copyright IBM Australia Limited 2011 ABN 79 000 024 733 © Copyright IBM Corporation 2011 All Rights Reserved. TRADEMARKS: IBM, the IBM logos, ibm.com, Smarter Planet and the planet icon are trademarks of IBM Corp registered in many jurisdictions worldwide. Other company, product and services marks may be trademarks or services marks of others. A current list of IBM trademarks is available on the Web at "Copyright and trademark information" at www.ibm.com/legal/copytrade.shtml

The customer examples described are presented as illustrations of how those customers have used IBM products and the results they may have achieved. Actual environmental costs and performance characteristics may vary by customer.

Information concerning non-IBM products was obtained from a supplier of these products, published announcement material, or other publicly available sources and does not constitute an endorsement of such products by IBM. Sources for non-IBM list prices and performance numbers are taken from publicly available information, including vendor announcements and vendor worldwide homepages. IBM has not tested these products and cannot confirm the accuracy of performance, capability, or any other claims related to non-IBM products. Questions on the capability of non-IBM products should be addressed to the supplier of those products.

All statements regarding IBM future direction and intent are subject to change or withdrawal without notice, and represent goals and objectives only.

Some information addresses anticipated future capabilities. Such information is not intended as a definitive statement of a commitment to specific levels of performance, function or delivery schedules with respect to any future products. Such commitments are only made in IBM product announcements. The information is presented here to communicate IBM's current investment and development activities as a good faith effort to help with our customers' future planning.

Performance is based on measurements and projections using standard IBM benchmarks in a controlled environment. The actual throughput or performance that any user will experience will vary depending upon considerations such as the amount of multiprogramming in the user's job stream, the I/O configuration, the storage configuration, and the workload processed. Therefore, no assurance can be given that an individual user will achieve throughput or performance improvements equivalent to the ratios stated here.

Prices are suggested U.S. list prices and are subject to change without notice. Starting price may not include a hard drive, operating system or other features. Contact your IBM representative or Business Partner for the most current pricing in your geography.

Photographs shown may be engineering prototypes. Changes may be incorporated in production models.

