



IBM Lotus Sametime 8.0

Highlights

- ***Make finding, communicating and meeting with people fast and easy with integrated IM, presence awareness and Web conferencing capabilities***
- ***Help keep conversations and company data confidential and protected with advanced security features***
- ***Connect with people outside the organization using supported public IM networks***
- ***Simplify communications through multiway VoIP and point-to-point video***
- ***Participate in IM sessions and Web conferences from Microsoft Windows, Apple Macintosh or Linux desktops***
- ***Stay connected with your team by using Lotus Sametime software on a variety of supported mobile devices***
- ***Use Web conferences to easily conduct more productive meetings with colleagues and business associates, wherever they are***
- ***Converge voice, data and video capabilities onto a unified communications and collaboration platform to help simplify IT and accelerate return on investment***

IBM Lotus® Sametime® software is an award-winning unified communications and collaboration platform that helps you quickly find, connect to and communicate with people, no matter where they are. Now, the Lotus Sametime family is expanding to include four offerings, giving organizations of all sizes more collaboration and licensing options than ever before.

Communicate the way you want— instantly

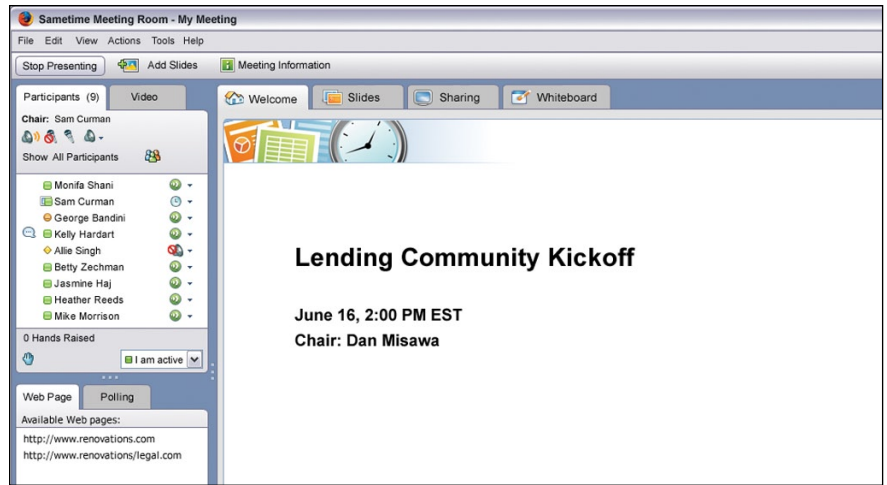
Lotus Sametime software delivers a variety of instant messaging (IM) features designed to help you communicate and collaborate in the most appropriate and productive way. You can IM with other people in your organization who use Lotus Sametime software, and interoperability with supported public IM networks makes it easy to chat with external business contacts, at no additional charge. When you need to talk, use built-in Voice over Internet Protocol (VoIP) to conduct a PC-to-PC voice conversation with other Lotus Sametime software users within your enterprise. With new point-to-point video capabilities, you even have the option to see your chat partner.

What's new in IBM Lotus Sametime 8 software?

- *Enhanced platform support, including IBM Lotus Domino® 8 and VMWare software*
- *Support for Microsoft Office and Microsoft Outlook 2007 applications*
- *Fast client startup and performance*
- *New and enhanced client capabilities*
- *New point-to-point video for Apple Macintosh clients*
- *Updated mobile device support, including Nokia E-series, Sony Ericsson and Microsoft Windows Mobile 6 devices*
- *Lotus Sametime Gateway serviceability and installation improvements*
- *New federation with Extensible Messaging and Presence Protocol (XMPP)-based IM networks (such as Jabber)*

To quickly communicate visual information, embed a snapshot from your PC in an IM, and annotate the screen grab before sending it. These features create a more personal collaboration experience and can help reduce communications costs.

To manage multiple conversations, use the tabbed chat feature to consolidate chats into one window, and move more easily between conversations and reduce desktop clutter. The chat history feature lets you store and view conversation records, so you can revisit information when needed. Spell



With Web conferencing capabilities, you can meet and share presentations, applications and desktops as if everyone were in the same room.

check is also built in, as is a variety of emoticons to help you visually express the meaning of your messages. The enhanced capabilities in IBM Lotus Sametime 8 software allow you to use a toolbar in Microsoft® Outlook and Microsoft Office software to initiate chats or schedule Web conferences without leaving your Microsoft Outlook in-box or Microsoft Office documents, spreadsheets or presentations—capabilities long available to users of IBM Lotus Notes® software.

Find people more quickly and improve responsiveness

Whether you use an Apple Macintosh computer, or Microsoft Windows® or Linux® technologies, Lotus Sametime software makes finding people—and the answers you need—fast and easy. Contact information from your corporate directory can include a picture, providing a “face” to colleagues you haven’t met and helping you establish more personal relationships. Type-ahead contact search makes it easy to find contacts.

You can also minimize interruptions while remaining available to people who need to reach you. With the selective privacy feature, you can choose to whom you are available, such as immediate team members or your manager. And alerts can immediately notify you when a contact becomes available.

Close distances between people with Web conferencing

Lotus Sametime Web conferencing capabilities give people a fast, easy and cost-effective way to schedule, manage and attend meetings, without spending the time and money on travel, lodging and meeting facilities. You can upload presentations or share applications, demonstrations or even your whole desktop. When appropriate, you can let participants make updates to your files by giving them control of your desktop, or perhaps letting a help desk take control of your computer for fast and easy tech support. Exchange ideas and arrive at decisions

more quickly in a Web conference with included group chat, IM, whiteboard and polling capabilities. And help enhance your meetings with optional, integrated audio and video capabilities. Whether as an alternative to or in addition to a Web conferencing service, Lotus Sametime software can help you hold more productive meetings and reduce expenses.

Share information confidently with advanced security features

Security-rich communications is one reason why leading organizations in the banking, financial, pharmaceutical, government and military industries rely on Lotus Sametime software. Lotus Sametime software can encrypt all IMs, VoIP voice chats and point-to-point video conversations to help you protect sensitive information. Enterprise-to-enterprise Lotus Sametime IM conversations can also be encrypted to help keep discussions confidential. Authentication gives you the confidence of knowing that the people you communicate with are who they say they are, while password protection helps ensure that only invited participants have access to Web conferences. You can also make a Web conference invisible to anyone who views the scheduled meeting list on the Lotus Sametime server.

New options for advanced collaboration

In 2008, IBM currently plans to expand the Lotus Sametime family with new capabilities in realtime community collaboration, making it easier than ever to find information and share and capture expertise, streamline group discussions and instantly share your screen.

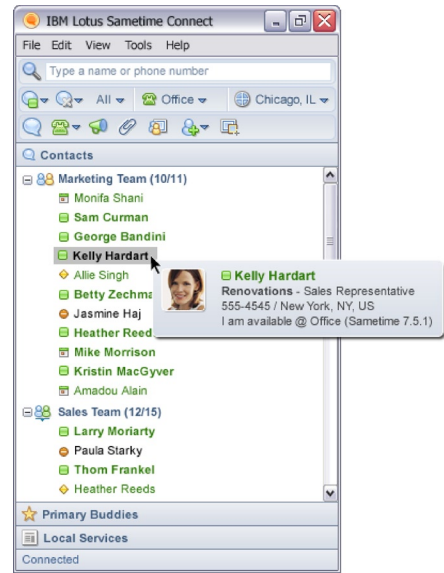
The planned capabilities include:

- *Persistent chat—enables teams to engage in ongoing, long-ranging conversations.*
- *Broadcast communications tools—help you get answers you need from experts and people you may not even know.*
- *Desktop sharing capabilities—let you share your desktop instantaneously.*
- *Location services—automatically stores and reuses your geographic location information, saving you time.*

Extend your unified communications strategy

IBM continues its commitment to working with leading telephony, audio and video providers so you can take advantage of the most advanced collaboration capabilities available. With Lotus Sametime software, you get a complete, unified client experience that can converge voice, data and video technologies onto a single, flexible communications and collaboration platform, regardless of which provider or providers you are working with. The integration available today allows you to take advantage of capabilities including:

- *Click-to-call and click-to-conference.*
- *Softphone integration.*
- *Aggregated telephony presence.*
- *Incoming call management.*
- *Voicemail integration.*



Instant messaging makes it easy to chat with colleagues within your organization, and contact lists can include pictures, so you can put a face to the people you're talking to.

Choose the right Lotus Sametime solution for your business

IBM recognizes that every organization has different goals and is in a different place in its communications and collaboration initiatives. While some organizations may be new to using instant messaging, others may be looking to unify a diverse mix of communications systems and capabilities. This is why IBM is expanding its Lotus Sametime family to include four unique offerings, designed to meet a variety of communications needs.

IBM Lotus Sametime Standard 8 software—delivers a full set of communications and collaboration capabilities including IM, presence, Web conferencing, VoIP and video, as well as support for many mobile devices, interoperability with supported public IM networks and access to plug-in capabilities. Lotus Sametime Standard 8 software, the follow-on



release to IBM Lotus Sametime 7.5.1 software and the upgrade path for entitled Lotus Sametime customers, is easier than ever to use, and includes enhancements such as increased performance and broader platform support.

IBM Lotus Sametime Entry 8 software—provides organizations with a cost-effective way to get started with core enterprise instant messaging capabilities, including IM, presence and integration with Microsoft Office and Microsoft Outlook technologies.

IBM Lotus Sametime Advanced 8 software—will be a new solution currently planned to include all of the capabilities of Lotus Sametime Standard software, plus additional, ground-breaking functionality for realtime community collaboration, such as persistent group chat, a suite of broadcast tools, instant desktop sharing and geographic locations services.

IBM Lotus Sametime “Unified Telephony” 8 software—is being designed to help businesses more easily access and manage telephone communications directly inside the Lotus Sametime or Lotus Notes client, while simplifying the integration into multivendor telephony environments.

Put your trust in a marketplace-leading solution

With the Lotus Sametime family of software solutions, you get the creative, innovative and flexible communications and collaboration capabilities you need regardless of the type or size of your organization. Whether you’re just getting started with instant messaging, want to extend your communications capabilities or need to integrate telephony into your unified communications environment, Lotus Sametime software provides an effective and cost-efficient way of helping people connect, collaborate and communicate.

For more information

To learn more about IBM Lotus Sametime 8 software, please contact your IBM sales representative or IBM Business Partner, or visit:

ibm.com/lotus/sametime

To view the online catalog for IBM Lotus Sametime software, please visit:

ibm.com/lotus/solutions/catalog-sametime

© Copyright IBM Corporation 2007

Lotus Software
IBM Software Group
One Rogers Street
Cambridge, MA 02142
U.S.A.

Produced in the United States of America
12-07
All Rights Reserved

IBM, the IBM logo, Domino, Lotus, Lotus Notes, Notes and Sametime are trademarks of International Business Machines Corporation in the United States, other countries, or both.

Microsoft and Windows are trademarks of Microsoft Corporation in the United States, other countries, or both.

Linux is a registered trademark of Linus Torvalds in the United States, other countries, or both.

Other company, product and service names may be trademarks or service marks of others.

References in this publication to IBM products or services do not imply that IBM intends to make them available in all countries in which IBM operates. The information contained in this documentation is provided for informational purposes only. While efforts were made to verify the completeness and accuracy of the information contained in this documentation, it is provided “as is” without warranty of any kind, express or implied. In addition, this information is based on IBM’s current product plans and strategy, which are subject to change by IBM without notice. IBM shall not be responsible for any damages arising out of the use of, or otherwise related to, this documentation or any other documentation. Nothing contained in this documentation is intended to, nor shall have the effect of, creating any warranties or representations from IBM (or its suppliers or licensors), or altering the terms and conditions of the applicable license agreement governing the use of IBM software.