

IBM Tivoli Analyzer for Lotus Domino 6.0

Highlights

- ***Can help optimize overall health and performance of Lotus Domino servers***
- ***Analyzes usage and capacity to help avoid bottlenecks and forecast changing needs***
- ***Matches server workload to capacity of hardware and operating system***

IBM Tivoli Analyzer for Lotus Domino 6.0

IBM® Tivoli® Analyzer for Lotus® Domino™ 6.0 can extend the capabilities of the Lotus Domino 6 Administrator, providing realtime feedback and historical data analysis that can help IT staff maximize server performance and manage changes in the environment. Tivoli Analyzer for Lotus Domino, which installs into and runs within the Domino 6 Administrator client, is the first product to harness the server-activity measurements and comprehensive statistical capabilities of the Domino 6 environment. By giving administrators a graphical breakdown of server capacity and usage trends, Tivoli Analyzer for Lotus Domino contributes to efficient, cost-effective server management.

Can help optimize overall health and performance of Lotus Domino servers

Tivoli Analyzer for Lotus Domino sorts and groups servers in logical aggregations that map to the Domino environment. It then evaluates hundreds of data points and operating-system statistics to perform predictive analysis and intelligent server health checks. Based on this realtime analysis, servers are sorted onscreen according to health—green for normal, yellow for components nearing their maximum capacity and red for problems requiring immediate attention. Comment fields provide initial insights about probable causes of yellow or red conditions, and further drill-down is available to help administrators pinpoint the cause and correct the problem. This continuous assessment of server health can help optimize both short-term and long-term performance. See samples of screen views in Figures 1, 2 and 3 on the next page.

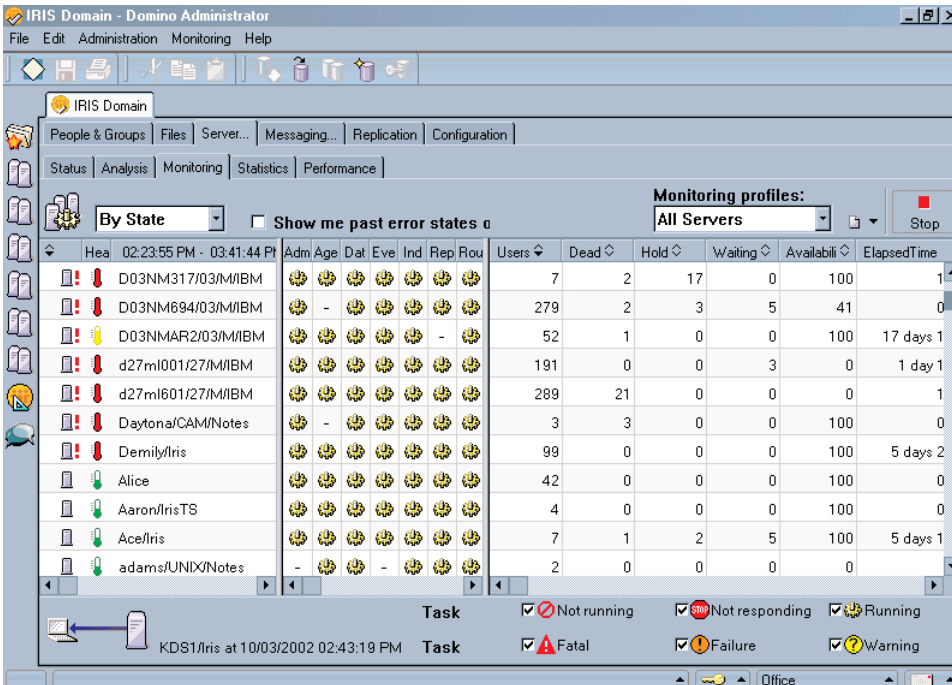


Figure 1: Server health monitoring for instant view of server health.

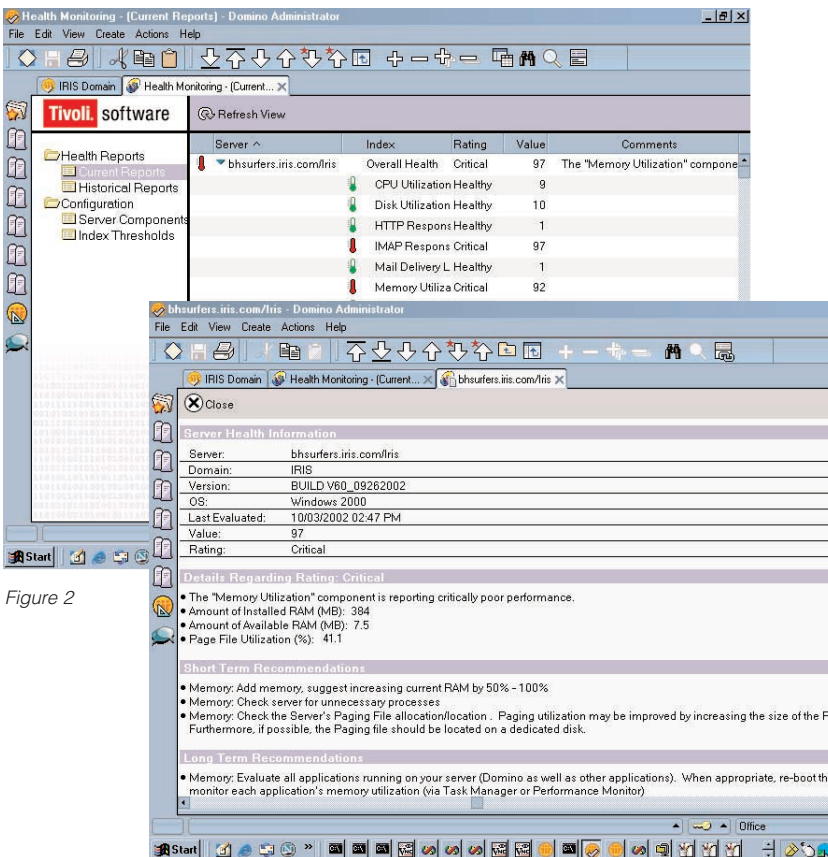


Figure 2

Figure 3

Server health monitoring drill-down detail and recommended actions.

Analyzes usage and capacity to help forecast changing needs

The activity trends feature of Tivoli Analyzer for Lotus Domino uses innovative predictive-analysis technology to chart usage trends in the Domino environment, which can help administrators avoid server workload problems. This allows businesses to efficiently plan for and implement upgrades, potentially minimizing the total cost of ownership. These projections also can help administrators justify additional IT outlays, as well as avoid resource shortages and performance degradation. See Figure 4 on the next page.

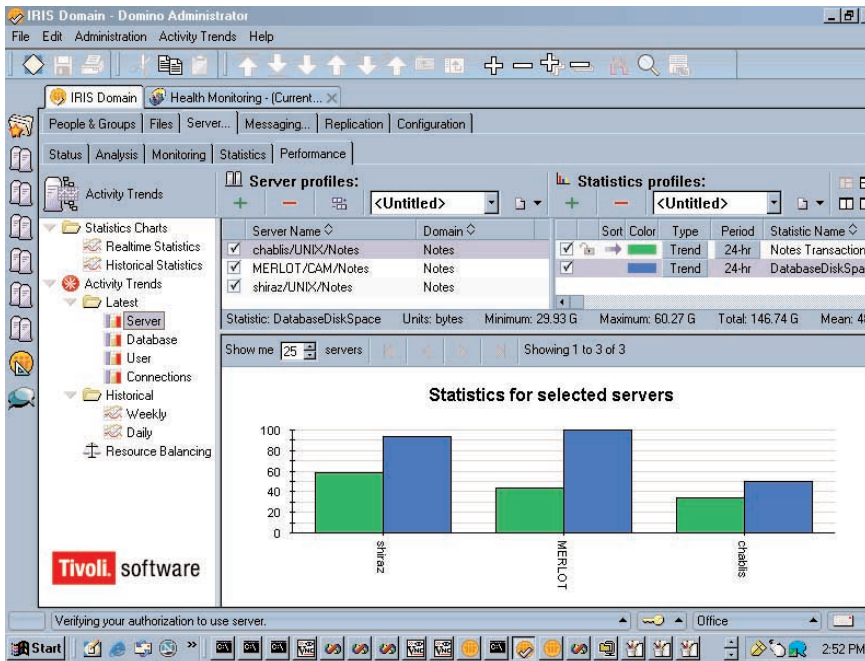


Figure 4: Activity Trends graph for analyzing performance, usage and capacity trends.

Matches server workload to capacity of hardware and operating system

To help maximize the utilization of existing resources, Tivoli Analyzer for Lotus Domino conducts load-balancing analyses based on transactions, disk space or an administrator-defined combination of a primary and secondary statistic. This component applies an algorithm to historical performance statistics

of the selected measures to optimize the load balance with a minimal number of moves. The load-balancing feature not only works with existing resources but also can be configured to incorporate a “phantom” server: Administrators simply specify the processing power and storage capacity of the theoretical server, then use the component as a modeling tool to determine how a new server might affect the outcomes.

Benefits

Through its combination of realtime analysis and historical trending, Tivoli Analyzer for Lotus Domino helps provide insight into the capacity and performance of servers in the Domino 6 environment, turning raw data into practical business intelligence. Tivoli Analyzer for Lotus Domino can help IT professionals by delivering:

- *Low total cost of ownership for Domino 6*
- *High productivity and return on investment through optimum Domino environment health*
- *Ease of installation and operation for administrators*
- *Realtime problem identification and recommended corrective steps*
- *Simple management of Domino servers*

Hardware and software requirements

Supported operating system versions

Windows 98

Windows 2000 Professional

Windows XP Professional

Windows NT 4

Refer to the Lotus Domino 6 Administrator client release notes for Service Pack information.

Supported processors

Intel® Pentium®

RAM requirements

Windows 98: 64MB (minimum), 256MB or more recommended

Windows 2000/Windows XP: 128MB (minimum), 256MB or more recommended

Windows NT Professional: 64MB (minimum), 256MB or more recommended

Disk space

275MB required

The minimum amounts are the disk space required for installing default files. More disk space is required if databases are replicated locally or copied locally.

Supported monitors

Color monitor required

To learn more

For information on Tivoli Analyzer for Lotus Domino and integrated solutions from IBM, contact your IBM sales representative or visit info.tivoli.com/availability

Tivoli software from IBM

An integral part of the comprehensive IBM e-business infrastructure solution, Tivoli technology management software helps traditional enterprises, emerging e-businesses and Internet businesses worldwide maximize their existing future technology investments. Backed by world-class IBM services, support and research, Tivoli software provides a seamlessly integrated and flexible e-business infrastructure management solution that uses robust security to connect employees, business partners and customers.



© Copyright IBM Corporation 2002

IBM Corporation
Software Group
Route 100
Somers, NY 10589
U.S.A.

Printed in the United States of America
10-02
All Rights Reserved

IBM, the e-business logo, the IBM logo and Tivoli are trademarks or registered trademarks of International Business Machines Corporation in the United States, other countries or both.

Lotus is a registered trademark, and Domino is a trademark of Lotus Development Corporation and/or IBM Corporation.

Intel and Pentium are registered trademarks of Intel Corporation in the United States and other countries.

Microsoft, Windows and Windows NT are registered trademarks of Microsoft Corporation in the United States, other countries or both.

Other company, product and service names may be the trademarks or service marks of others.

The Tivoli home page on the Internet can be found at ibm.com/tivoli

The IBM home page on the Internet can be found at ibm.com

Printed in the United States on recycled paper containing 10% recovered post-consumer fiber.