



Enterprise IT Management Made Simple

IBM ^ iSeries



i890 and OS/400 V5R2 Announcements



iSeriesJ Announcement at A Glance

- **i890 32-way with POWER4 provides unmatched iSeries growth**

Unparalleled Scalability

- **Enterprise IT Management Made Simple with OS/400⁷ V5R2**

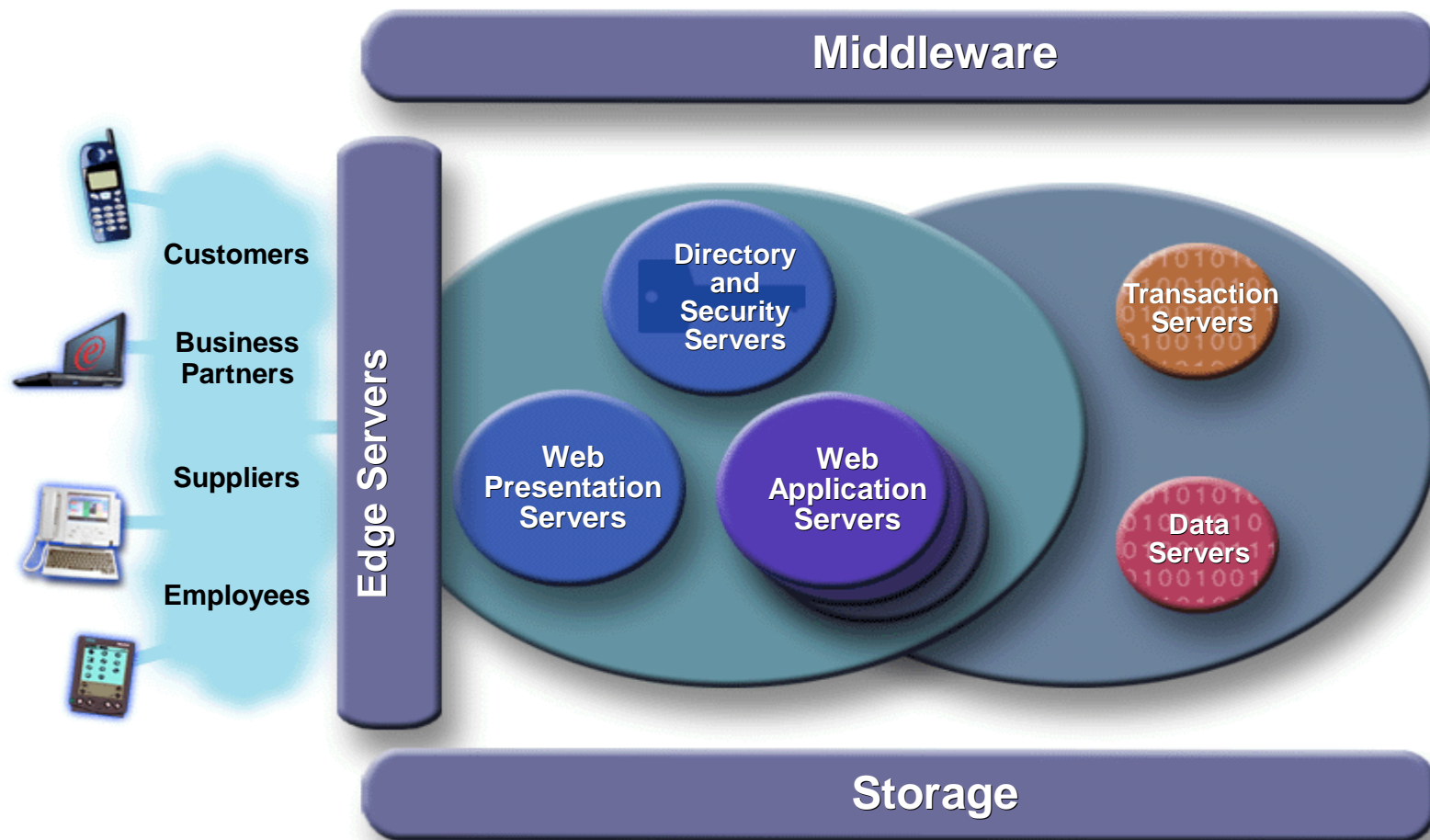
Everybody Wins !

- **Delivering outstanding flexibility for adding new workloads**

Consolidate Servers...Expand Business

- April 29, 2002 Announcement
- June 14, 2002 i890 with OS/400 V5R2 Limited Availability (English only)
- August, 2002 OS/400 V5R2 Worldwide General Availability

Enterprise IT Management Challenge



- Multiple platforms, optimized for specific workloads
- Complex management and skills requirements drive high costs

Innovative Technology

IBM @server POWER Processor Roadmap



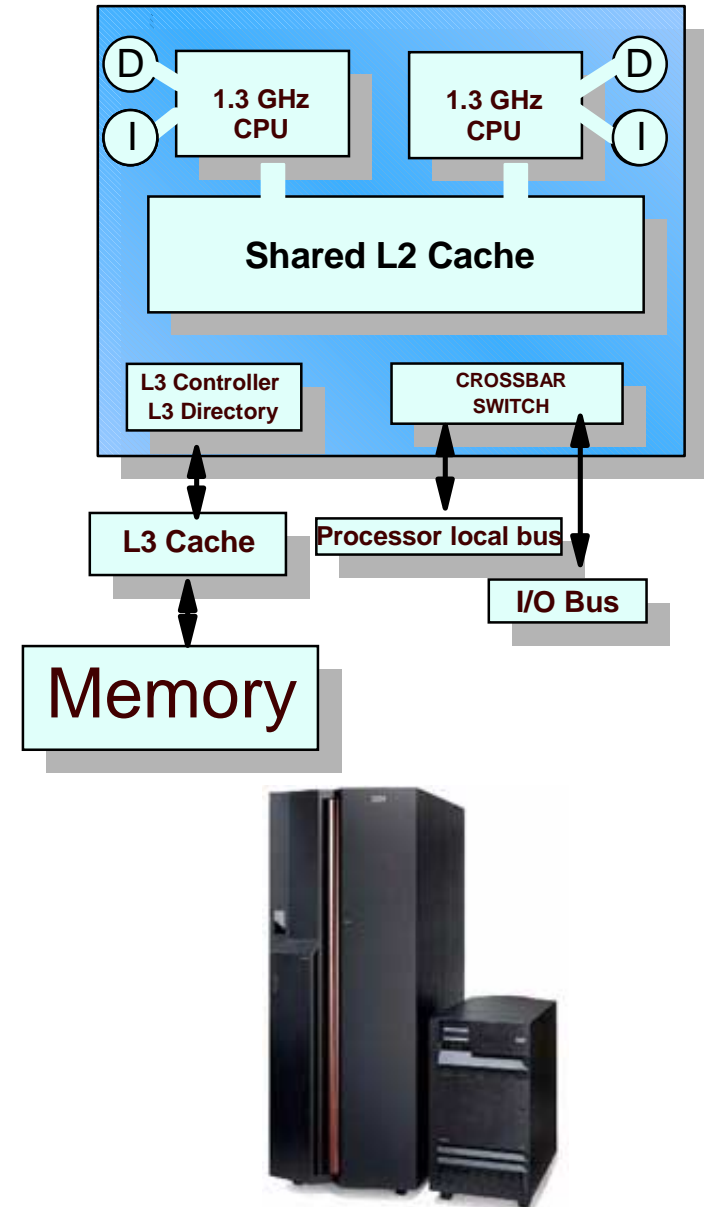
i890 with 32-way POWER4 Processor

IBM POWER4 delivers unmatched iSeries growth on i890 32-way*

- 37,400 CPW, up to 1.85 x growth over i840
- Processor features include Capacity Upgrade on Demand and exceptional interactive processing flexibility
- 1.3 GHz POWER4 microprocessors
 - 174 million transistors on a chip
- Up to 534 MB of L2/L3 cache
- Doubled memory and I/O capacity
 - Up to 256 GB memory
 - Up to 72 Terabytes disk
 - Up to 32 IXA

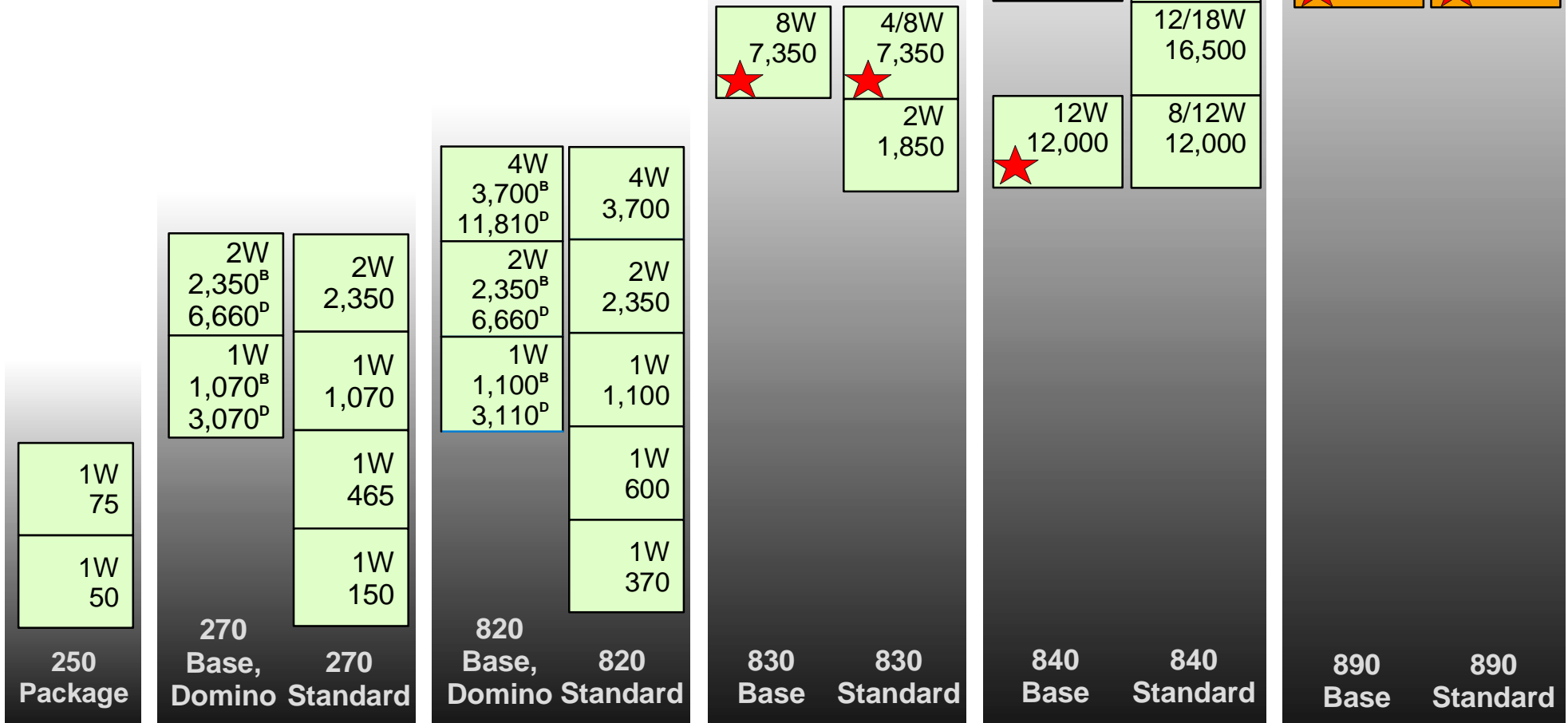
Common IBM eServer processor roadmap for iSeries and pSeriesJ

* Requires OS/400 V5R2





New processor features



Notes:

1. Processor Commercial Processor Workload (CPW) values are used. CPW is a relative measure of performance of iSeries processors. Performance in customer environments may vary. The value is measured on maximum configurations.
2. Model 830, 840 Base Processor Features and Model 830 4/8 way do not support V4R5.

# of Processors Processor CPW Domino MCU	Runs V5R1 or V5R2
# of Processors Processor CPW	Requires V5R2



Mainframe Class Technology, iSeries Servers

i270 with up to



- 2,350 CPW
- 8 GB memory
- 840 GB disk

i820 with up to



- 3,700 CPW
- 32 GB memory
- 8 TB disk

i830 with up to



- 7,350 CPW
 - 64 GB memory
 - 22 TB disk
- NEW**
- 4/8-way Standard Processor Features
 - 8-way Base Processor Features

i840 with up to



- 20,200 CPW
 - 128 GB memory
 - 38 TB disk
- 8/12, 12/18, 18/24-way Standard Processor Features
- NEW**
- 12-way & 24-way Base Processor Features

i890 with up to



- 37,400 CPW
 - 256 GB memory
 - 72 TB disk
- 16/24-way & 24/32-way Standard Processor Features
 - 24-way & 32-way Base Processor Features

NOTE: Values quoted for CPW, Memory and Disks are the maximum values configurable within each of the models



iSeries Product Updates



270 820
830+
Current

Domino Processor Features

Domino Capacity
No Choice of 5250 interactive features
No Capacity Upgrade on Demand
Limited DB2 UDB for iSeries capacity

Base Processor Features

Processors w/Fixed Capacity
No Choice of 5250 interactive features
No Capacity Upgrade on Demand

Standard Processor Features

Standard Processor Features
Choice of 5250 interactive features

Standard + CUoD Features

POD Processor Features with:
Choice of 5250 interactive features
Capacity Upgrade on Demand

New for 2002

Domino Processor Features

Domino Capacity
No Choice of 5250 interactive features
No Capacity Upgrade on Demand
Limited DB2 UDB for iSeries capacity

Base Processor Features

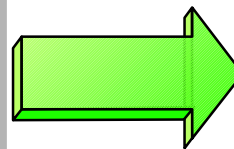
Processors w/Fixed Capacity
No Choice of 5250 interactive features
No Capacity Upgrade on Demand

Standard Processor Features

POD Processor Features with:
Choice of 5250 interactive features
Capacity Upgrade on Demand



270 820 830+ 890



820 DSD upgrade to 830+ Base



Positioning the iSeries Product Line

Domino Processor Features

Base Processor Features

Standard Processor Features

Domino Capacity No Choice of 5250 interactive features No Capacity Upgrade on Demand Limited DB2 UDB for iSeries capacity	Processors w/Fixed Capacity No Choice of 5250 interactive features No Capacity Upgrade on Demand	Processors w/Optional Capacity Multiple 5250 interactive features Capacity Upgrade on Demand
<div data-bbox="136 560 325 722" style="background-color: #e67e22; color: white; padding: 5px; text-align: center;">Domino Serving</div> <div data-bbox="325 560 735 876"> <p>Workloads</p> <ul style="list-style-type: none"> ■ Domino + WebSphere ■ Domino + LinuxJ ■ Domino + JavaJ ■ Domino + File serving ■ Domino Web serving </div> <div data-bbox="304 885 493 1144" style="background-color: #f1c40f; padding: 10px; text-align: center;"> <p>NEW!</p> </div> <div data-bbox="493 885 892 1096" style="background-color: #2ecc71; color: white; padding: 10px; text-align: center;"> <p>820 DSD to 830+ Base</p> </div> <div data-bbox="514 1112 724 1291" style="background-color: #95a5a6; border-radius: 50%; padding: 10px; text-align: center; color: #3498db;"> <p><i>Models 270,820</i></p> </div>	<div data-bbox="756 560 945 722" style="background-color: #e67e22; color: white; padding: 5px; text-align: center;">Application & Web Serving</div> <div data-bbox="945 560 1354 1079"> <p>Workloads</p> <ul style="list-style-type: none"> ■ WebSphere ■ LinuxJ ■ JavaJ ■ e-commerce ■ Domino ■ Windows ■ Web serving ■ File Serving ■ other... </div> <div data-bbox="756 738 945 901" style="background-color: #e67e22; color: white; padding: 5px; text-align: center;">Domino Serving</div> <div data-bbox="1165 1112 1354 1291" style="background-color: #95a5a6; border-radius: 50%; padding: 10px; text-align: center; color: #3498db;"> <p><i>All Models</i></p> </div>	<div data-bbox="1396 560 1585 722" style="background-color: #e67e22; color: white; padding: 5px; text-align: center;">Application & Web Serving</div> <div data-bbox="1585 560 1974 1128"> <p>Workloads</p> <ul style="list-style-type: none"> ■ 5250 interactive ■ WebSphere ■ LinuxJ ■ JavaJ ■ e-commerce ■ Domino ■ Windows ■ Web serving ■ File Serving ■ other... </div> <div data-bbox="1396 738 1585 901" style="background-color: #2ecc71; color: white; padding: 5px; text-align: center;">Scalable, Mixed Transaction</div> <div data-bbox="1396 917 1585 1079" style="background-color: #f1c40f; color: white; padding: 5px; text-align: center;">5250 Transaction</div> <div data-bbox="1795 1112 1984 1291" style="background-color: #95a5a6; border-radius: 50%; padding: 10px; text-align: center; color: #3498db;"> <p><i>All Models</i></p> </div>

Notes

1. Processor on Demand activation feature available on 4W processors and above



More Hardware News: Everybody Wins !

- **Make it easier to add new workloads on iSeries (both install base and new)**
 - ▶ All 4-way and above machines ship with "extra capacity" (CUoD)
 - Announce 4-8way CUoD for 830, reduce pricing on 840 CUoD, 890 is CUoD
 - To activate for 830/840 customers \$41K per engine , \$60K for 890 (more power)
 - ▶ Create attractive optional workload price for 270 customers
 - 36% price action on 2432 (1070 with 50 Interactive)
 - 43% price action on 2434 (2350 with 70 Interactive)
 - ▶ Expand "0" interactive/fixed workload offerings into high end & reduce 820 fixed workload price
 - Complete product line (830/840/890) available with "0" IA or fixed workload
 - Reduce prices on 820 existing fixed workload machines (50-56% price action)

- **Re-balance our Value Proposition: Move value from components to SW**
 - ▶ Drop DASD pricing to Unix levels (HP , pSeries, SUN)
 - 30% Price Action on 18GB DASD, makes it equal to 9GB
 - 23% Price Action on 35GB DASD
 - ▶ Reduce High Capacity (512, 1GB) memory for 270/820/830 systems
 - New workloads require large amounts of memory
 - ▶ Increase SW subscription pricing -- industry trend to place more value on SW
 - Announce April 29th , effective July 1st

Flexible Storage Options with SAN Switch Fabric

Switch fabric expands options across multiple initiators and multiple targets

- Enabled by IBM 2109 switch

Now multiple SAN targets can be connected through a single iSeries fibre channel adapter

- Optimizes number of fibre channel adapters
- Zoning recommended for performance

2 Gbps/sec SAN fabric support

- Existing iSeries Fibre Channel adapters can benefit from new high performance SAN fabric



iSeries J Announcement Hardware Summary

- **i890**

- 16/24 and 24/32-Way with Capacity Upgrade on Demand
- More granular 5250 Interactive Features
- 24 and 32-Way Base Processor Features

- **i840**

- 8/12, 12/18 and 18/24-Way with Capacity Upgrade on Demand
- 12 and 24-Way Base Processor Features

- **i830**

- 4/8-Way with Capacity Upgrade on Demand
- 8-Way Base Processor Feature

- **Key Dates:**

April 29	Announcement
June 4	Configurator support and detailed RFA / pricing
June 14	i890 with OS/400 V5R2 Early Availability (English only)
August	OS/400 V5R2 Worldwide General Availability



OS/400 Version 5 Release 2

Enterprise IT Management Made Simple

OS/400 V5R2 Highlights

Performance at your fingertips

- Flexible Capacity Upgrade on Demand now standard on i830 4-way and above*
- Dynamic logical partitioning for award-winning 64-bit Linux⁷
- Intuitive iSeries Navigator workload management tools

Adaptive storage virtualization for high availability

- Mainframe-class availability with switched disk cluster management
- Self-optimizing, multiple IBM DB2⁷ UDB images for business unit consolidation
- Extensive Windows server management now supports Microsoft⁷ Cluster Server

Flexible, secure management of e-business infrastructure

- Industry's first eLiza Enterprise Identity Mapping enables true single signon
- High performance Apache Web serving with secure sockets and caching accelerators
- Simple and pervasive operations with wireless-optimized Web-ready micro-drivers

*Capacity Upgrade on Demand also available on i830 and i840 with V5R1



Performance at Your Fingertips





iSeries Capacity Advantage

Flexible capacity management without interrupting business

- 33% of i840 customers exploited Capacity Upgrade on Demand in 2001

Capacity Upgrade on Demand solutions for i830*, i840* and i890

- Dynamic processor activation of stand-by capacity
- No system or application restart required



*Available with V5R1 and V5R2



Performance at Your Fingertips

IBM's Capacity Upgrade on Demand . . .

. . . offering customers a flexible way to
add new workloads or manage
peak capacity requirements

Application Flexibility - Simple, flexible implementation of new workloads
and workload peaks without business interruption

No Premium - shipped on all Model 830 4-way processors and above

Trial Capacity - 14 days (power-on time) of no charge capacity

ASP Solution Server - Model 830 1/8-way available via I-listed RPQ

**33% of Model 840
customers are using
CUoD today**



OS/400 V5R2 iSeries Navigator

Extensive automation for workload management

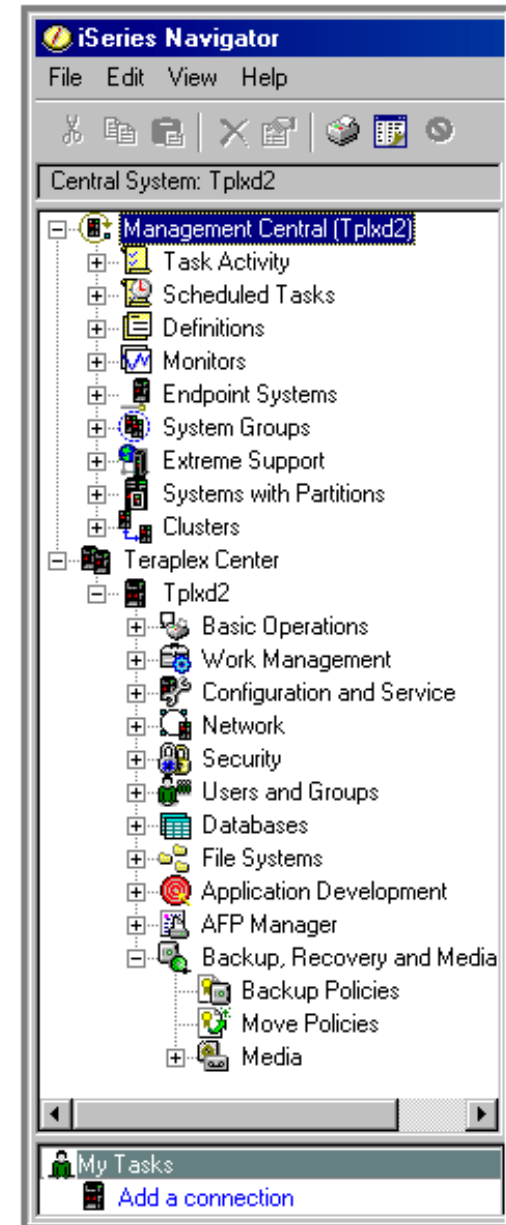
- New file and B2B transaction monitors
- Systems and storage management
- Backup and media policies
- Network management, including support for IPv6

IBM DB2 UDB transaction management

Switched disk cluster management

Linux dynamic partition management

Enterprise Identity Mapping security



Mainframe Class Logical Partitioning

V5R2 provides additional LPAR management with iSeries Navigator

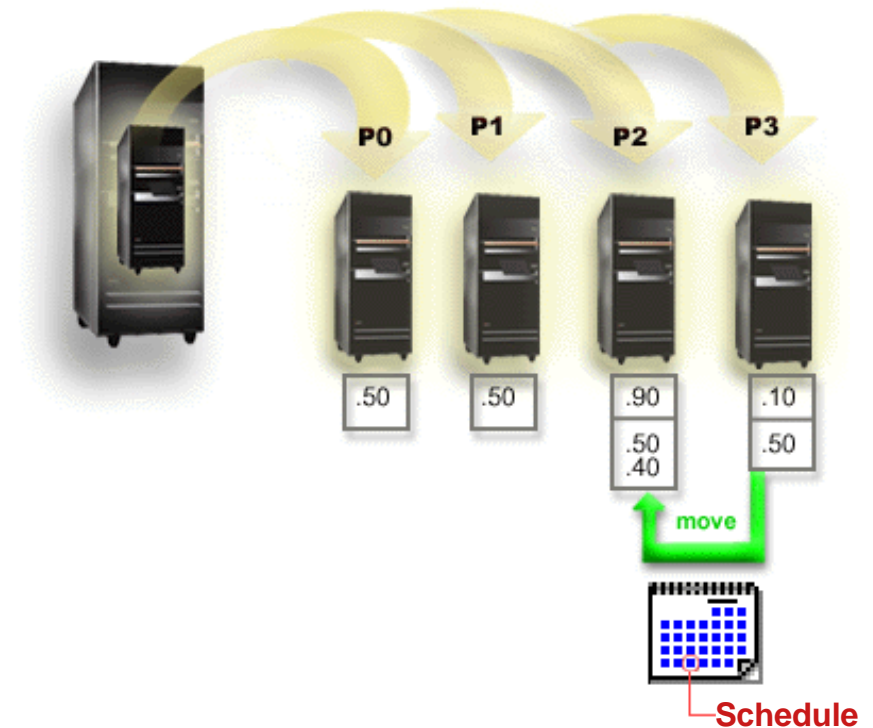
- Sophisticated, Windows-based graphical management tool
- Multi-partition management

Reduce costs via mixed workload consolidation and IT resource optimization

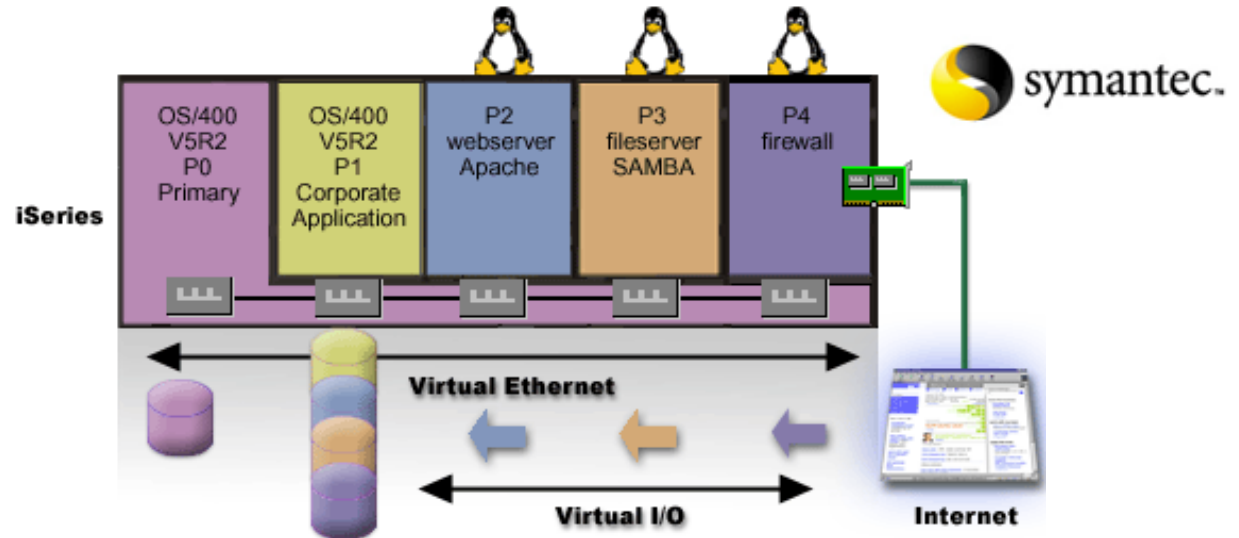
- 44% of i840 customers exploiting LPAR

Sub-capacity pricing on n-way servers

- WebSphere™ Commerce Suite
- WebSphere Application Server



Server Consolidation with Linux

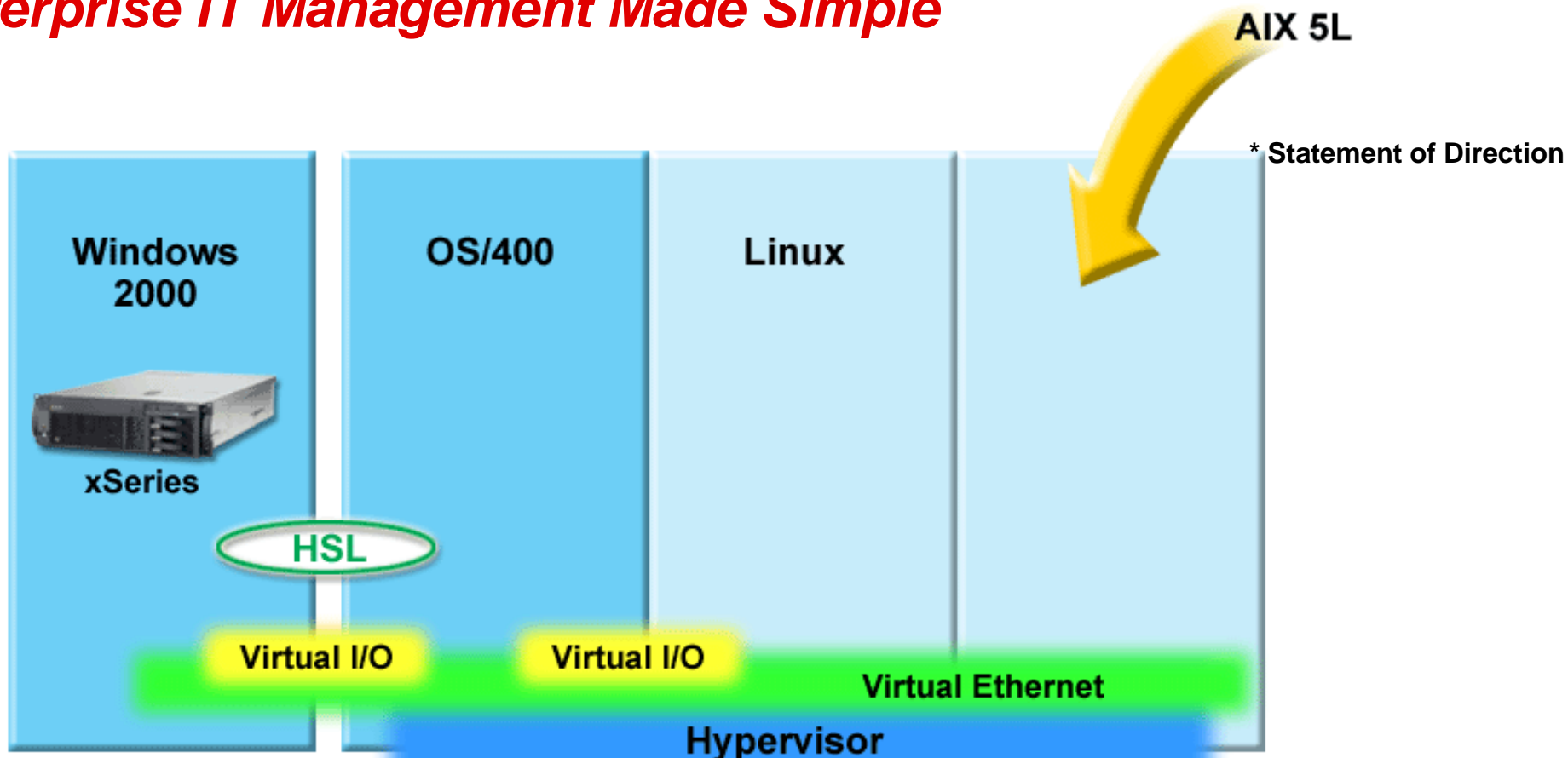


- Dynamic virtual processor allocation for Linux partitions
- iSeries Linux now supports 64-bit kernel
- Symantec Enterprise Firewall planned for iSeries
- IBM DB2 Universal Database and WebSphere Application Server*

*Statement of Direction: This presentation contains IBM plans and directions. Such plans are subject to change without notice.



Enterprise IT Management Made Simple



Lowering e-infrastructure management costs across multiple environments

V5R2 OS/400 PASE now provides integrated runtime for AIX⁷ 5L applications

Project eLiza will extend to future management of AIX 5L in iSeries partitions*

*Statement of Direction: This presentation contains IBM plans and directions. Such plans are subject to change without notice.

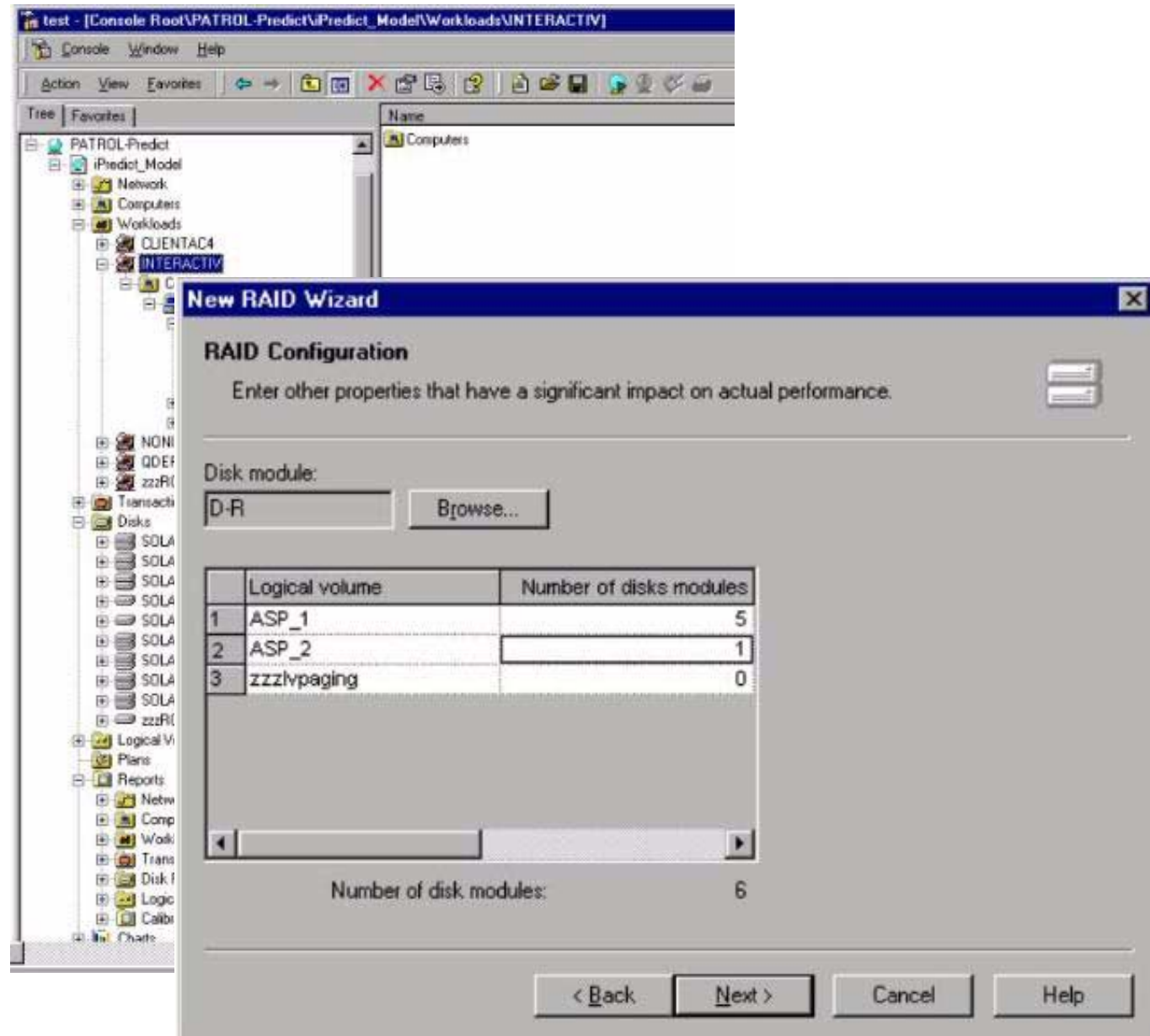


BMC PATROL Predict for iSeries

PATROL Predict provides powerful graphical analysis tool for capacity and performance planning

Collects, measures and projects future performance requirements

Comprehensive graphical analysis, "what-if" modeling



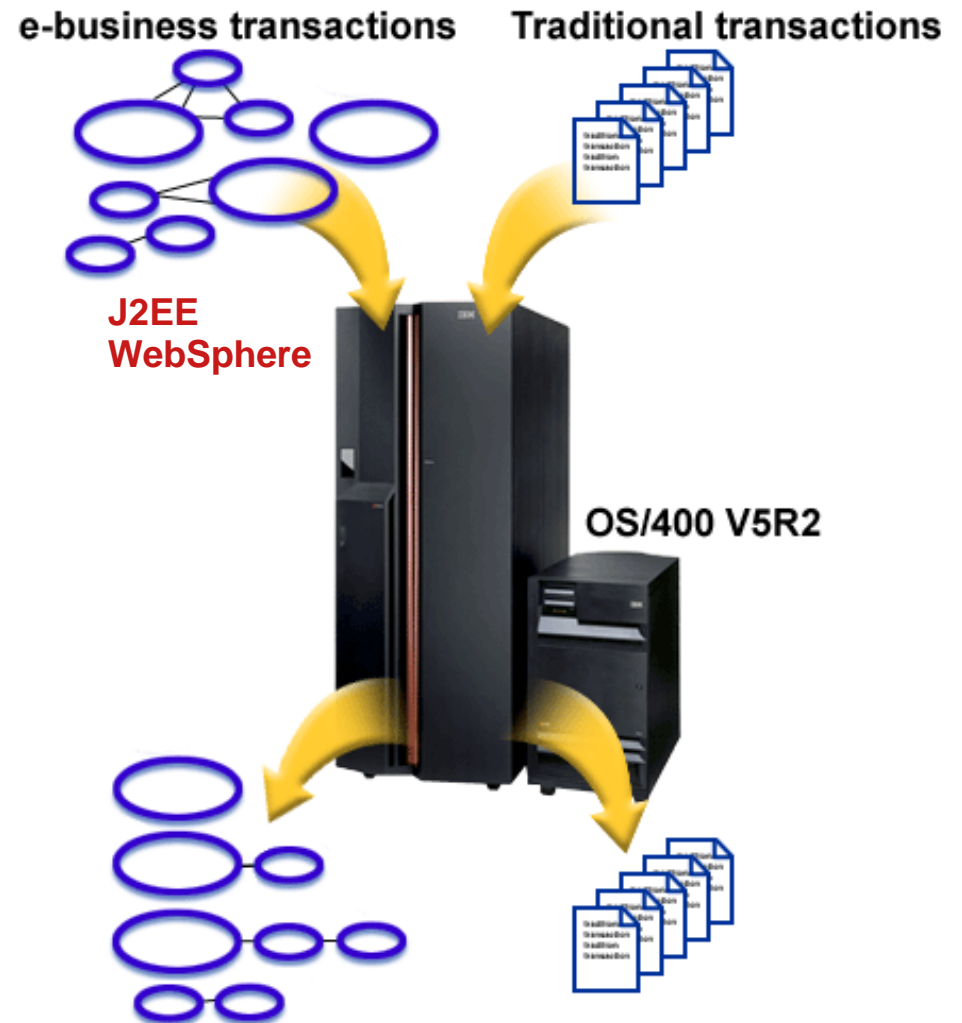
Enterprise Class Adaptive e-transaction Services

iSeries optimized for both traditional and e-business transactions

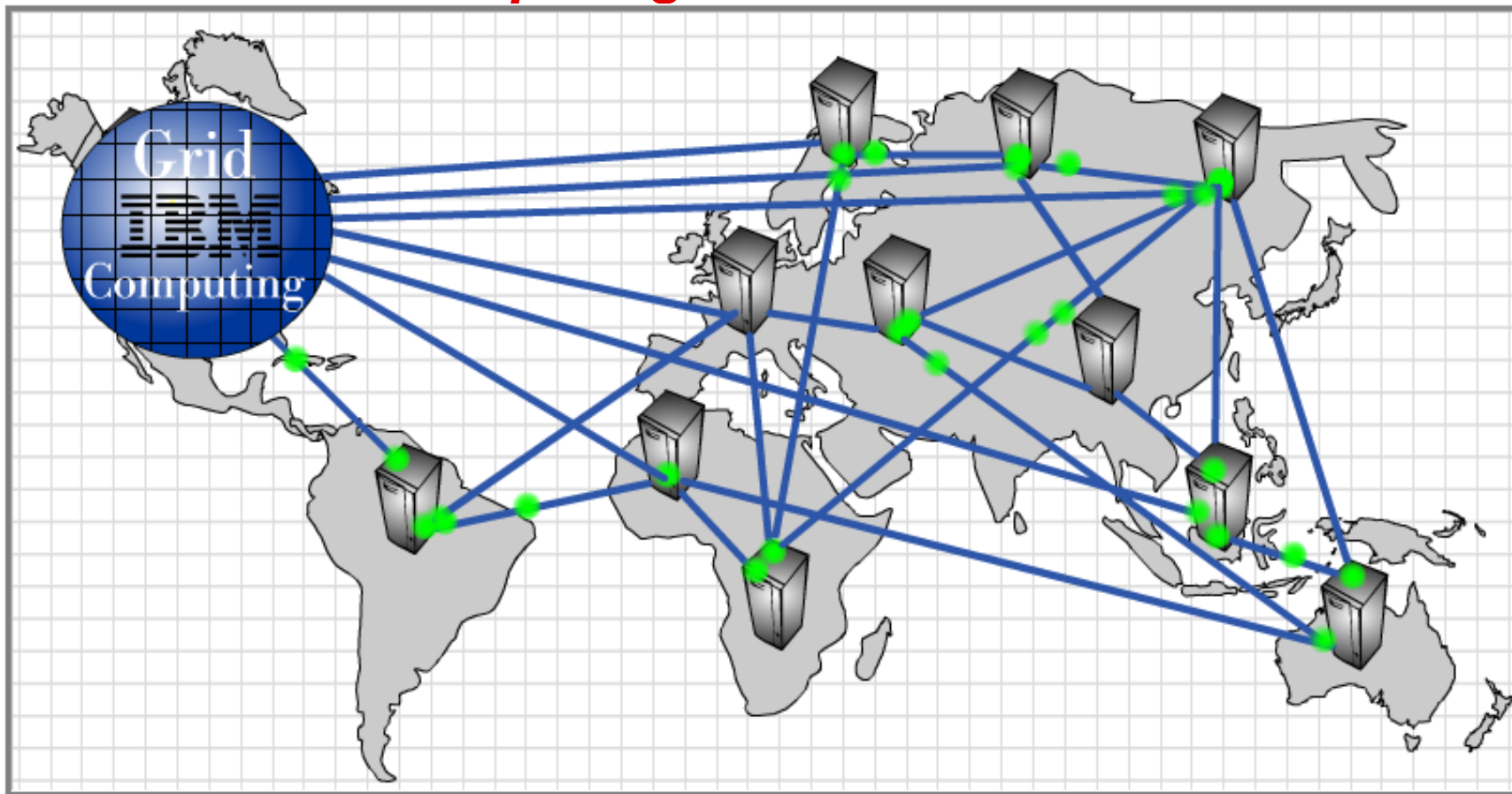
Adaptive e-transaction Services

- Extends robust iSeries transaction services to e-business applications
- Transaction server automatically adapts to application requirements
- No programming changes required

Further optimizes iSeries for highly scalable WebSphere and Java™ transaction performance



iSeries and Grid Computing



Flexible, secure, standards-based access to shared computing resources

iSeries support signals growth of commercial grid applications

OS/400 V5R2 provides support for Globus Toolkit.J

Available with OS/400 PASE or Linux



Adaptive Storage Virtualization for High Availability

IBM DB2 UDB for iSeries

Availability enhancements

- Multiple independent name spaces
- Switched disk (IASP)

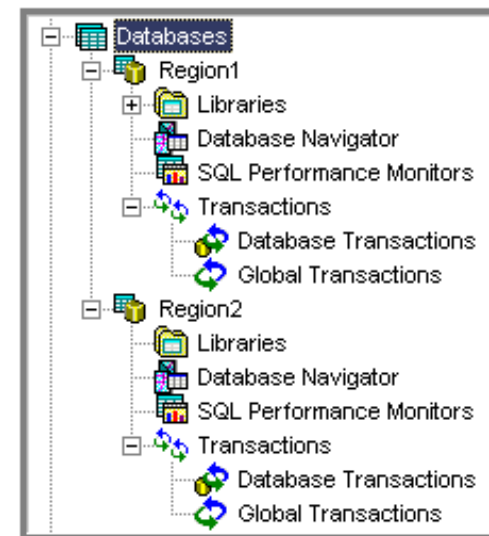
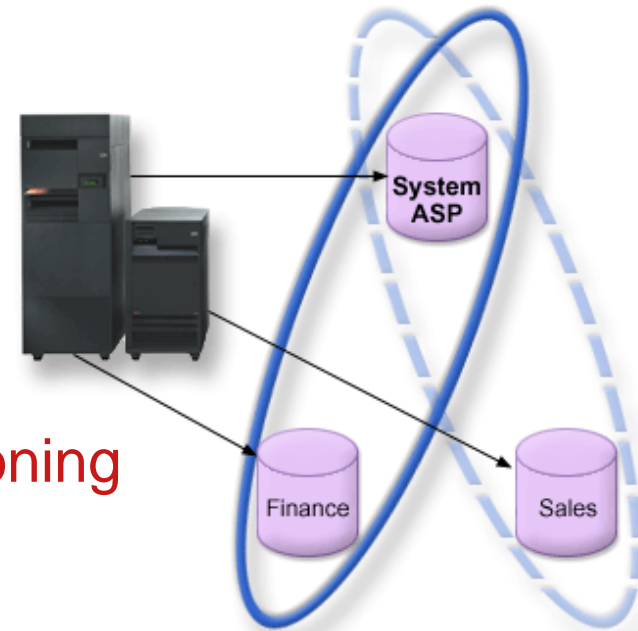
Open standards support

- SQL enhancements
- Java Transaction API (JTA)
- X/Open Distributed Transaction Processing (XA-DTP)
- Enhanced DB2 UDB family compatibility

iSeries Navigator Enhancements

- Self-optimizing automatic index advisor and statistics collection
- Graphical management for local DB2 UDB and global WebSphere transactions

DPAR !
Data Partitioning



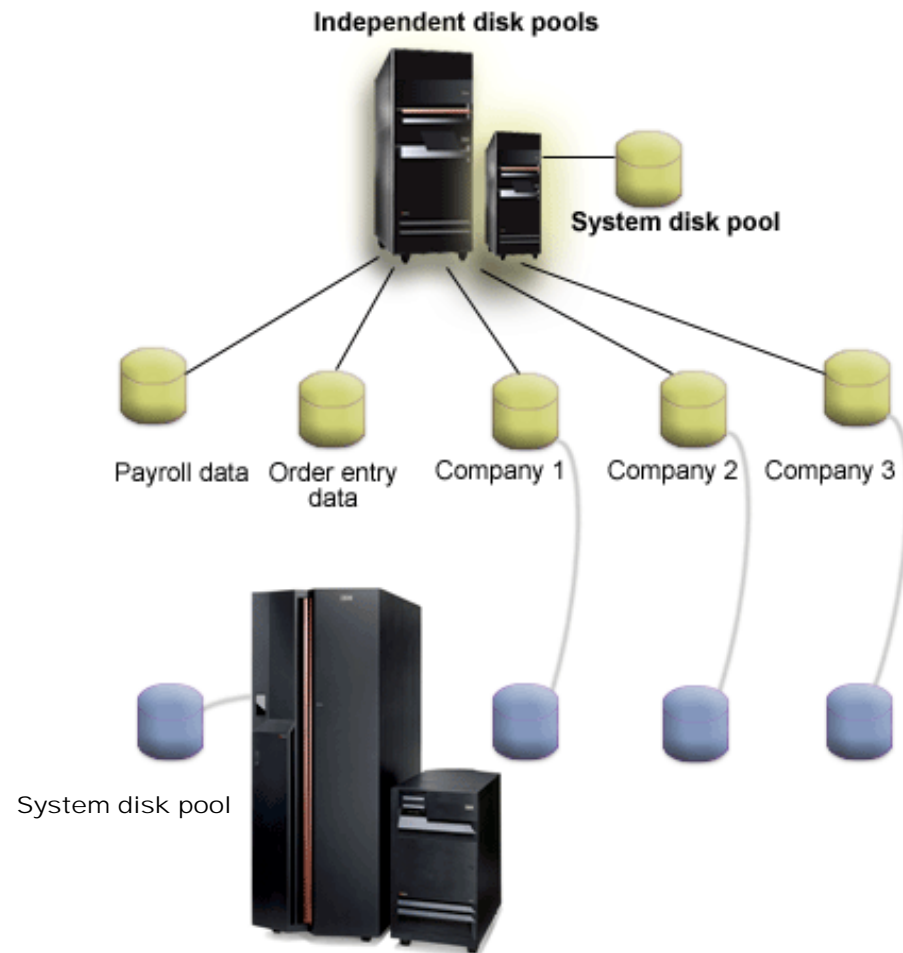
Switched Disk for High Availability and Clustering

Consolidate data with multiple name spaces within single server

- Multiple independent databases, system libraries, library names

Support for switching database and other objects between servers

- Switch disk for scheduled maintenance and upgrades
- Improved availability for unscheduled outages



Enterprise High Availability Management

Safeguard OS/400 software upgrades with virtual media installation

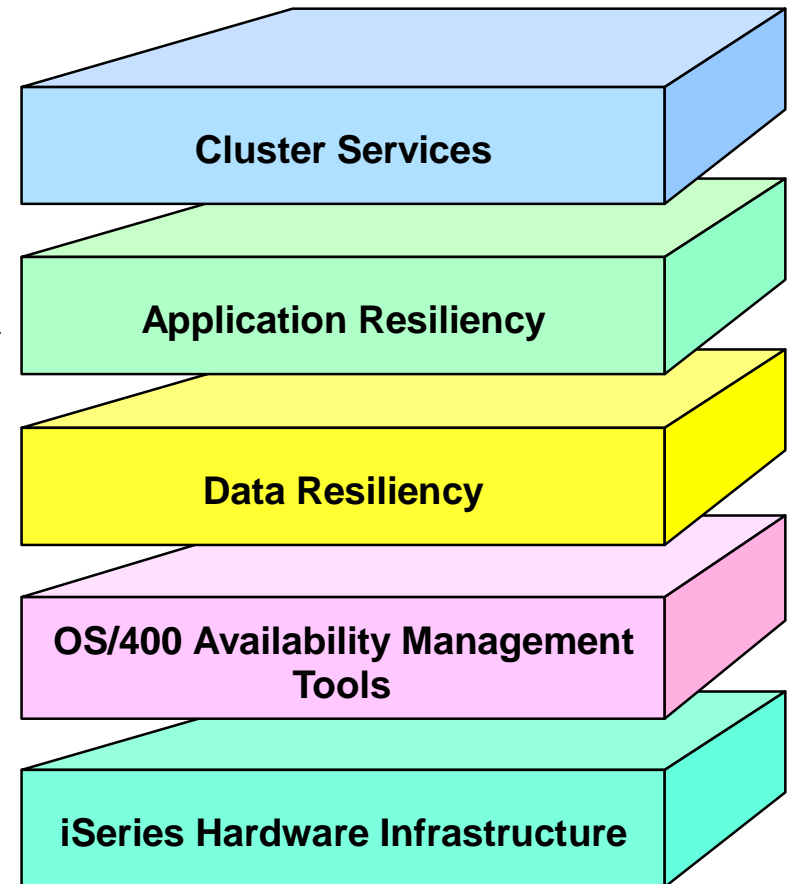
Simplified enterprise backup and media management with iSeries Navigator tools

Journal standby mode improves availability with faster restart of clustered system

Enhanced performance and recovery options for DB2 UDB access path protection

Reduced disk upgrade downtime through new disk migrate while active

Tivoli⁷ Storage Manager V5



Self-Configuring Disk Management

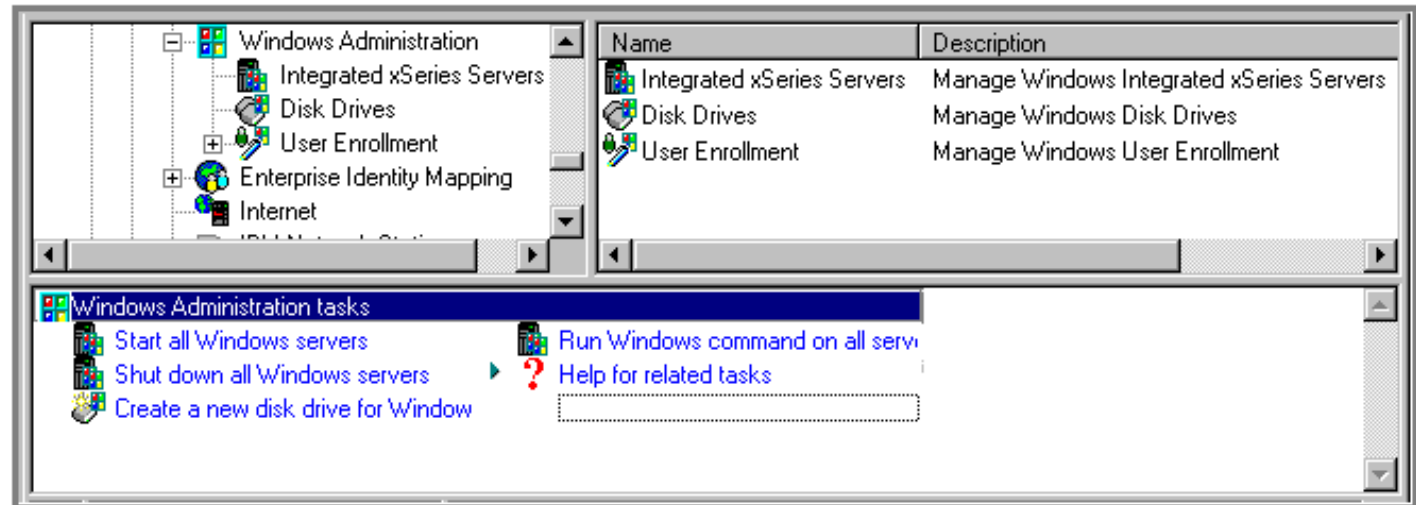
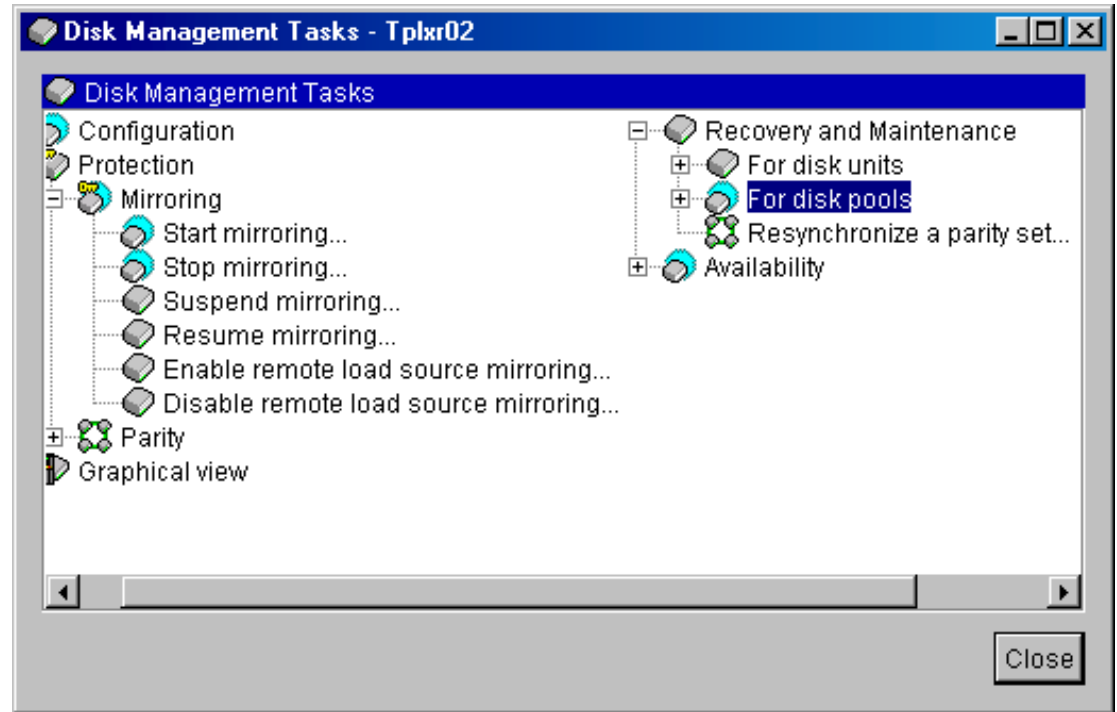
Create, manage and monitor storage virtualization on iSeries

Self-guided configuration wizards

Simplification of complex disk management tasks

- RAID-5 and Mirroring

SAN-like storage management for Windows Servers through IXA/IXS



Windows Server Management

Microsoft Cluster Service

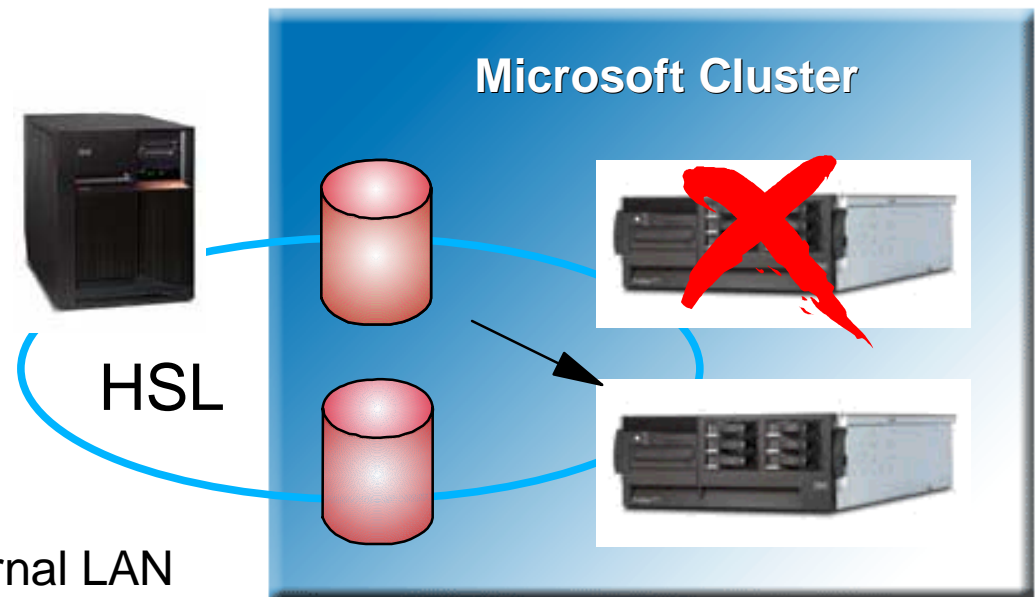
- Availability solution for planned and unplanned outages
- Dynamically switch storage spaces (disks) between Windows servers

xSeries™ servers

- IXA now supports latest x360 and x440 servers

Virtual Ethernet

- Higher performance for multi-tier apps and backup
- High-speed interconnect without external LAN
- Connects multiple Windows servers, Linux and OS/400 partitions



Flexible, Secure Management of e-business Infrastructure

Enterprise Identity Mapping

Project eLiza



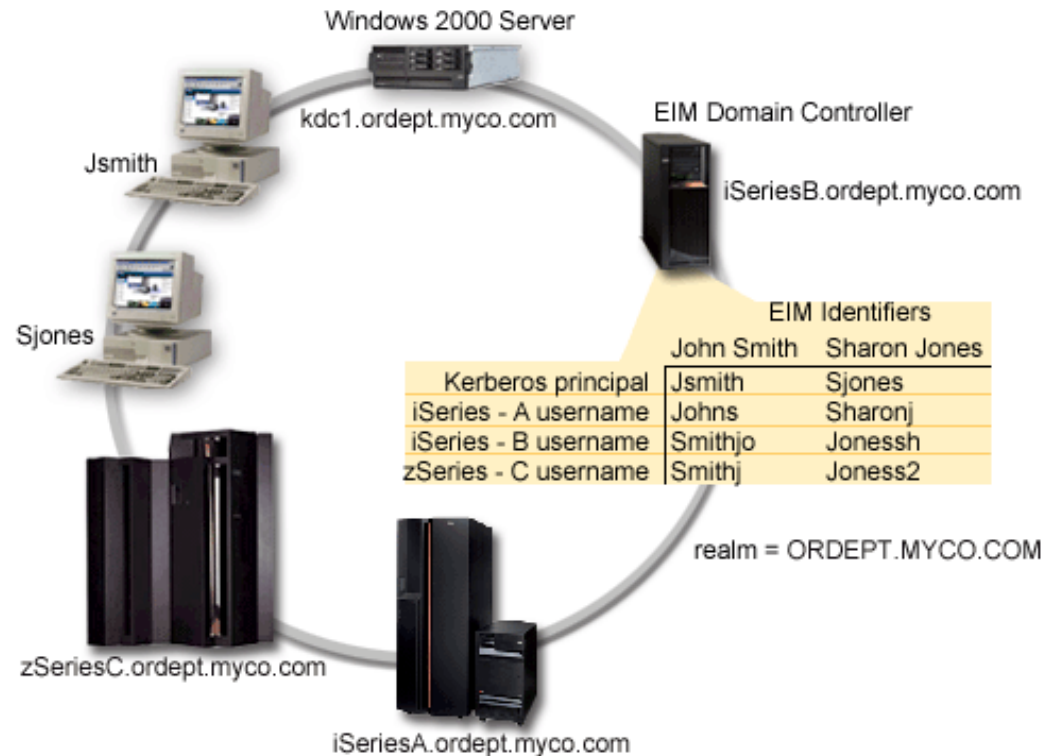
The industry's first Enterprise Identity Mapping implementation

Simplifies authentication process for users

Enables single signon

Reduces costs of user identity, password and network administration

Simplifies the development of multi-tier, multi-server applications



Secure High Performance Apache Web Serving

Web Caching Accelerator

- Provides high performance, high volume Apache Web serving
- More than doubles the capacity for Web serving
- Self-activating, easy to setup
- Exploits caching techniques developed by IBM Research

Secure Sockets Accelerator

- Cryptography adapter delivers optimized performance for Internet security checking
- Secure Sockets Level (SSL) and Transport Layer Security (TLS) protocols
- Multiple accelerators per system enable ultra-high volume throughput

IPv6 with self-configuring wizards

- Simple network configuration using latest industry standards

Firewall-friendly VPN with UDP encapsulation

- Application-transparent security allow servers to remain behind firewall




iSeries Desktop Solutions with iSeries Access

iSeries Access for Web

- Browser based access to iSeries resources
- Easily customizable front page
- Secure, central administration
- Includes 'My Personal Folder'
- Access to printers, database, 5250 applications, commands, jobs, messages, files

WebSphere Host Publisher 4.0

- Rapid Web-enablement of 5250 applications
- Fully translated, including DBCS languages
- Runs on WebSphere Application Server 4.0
- Supported on OS/400 V5R1 and V5R2

IBM  **iSeries Access for Web**

showcase

iSeries Access for Web

Welcome to iSeries Access for Web, the lightweight, browser-based access to your iSeries server.

Pure Java servlet based access

iSeries Access for Web is a set of servlets that run on iSeries servers as extensions to the HTTP server. The servlets provide access to databases, files, print queues, printer output, and messages contained on the iSeries server.

Industry standard protocol

iSeries Access for Web uses the industry standard HTTP and HTTPS protocols instead of proprietary TCP/IP ports and protocols. Firewall issues are much more manageable as a result.

Lightweight access

iSeries Access for Web provides lightweight, and convenient access to iSeries servers from any web browser. Most of the iSeries Access for Web functions have minimal browser requirements and work with almost any browser on any platform.

My Home Page

- Print
- Messages
- 5250
- Database
- Files
- Command
- Customize
- Other

Related Links:

- [iSeries Access for Web](#)
- [Client Access](#)
- [Operations Navigator](#)
- [WebSphere Host Publisher](#)
- [iSeries Information](#)



Wireless-Web Ready Java 2 Micro Edition

Micro Edition drives growth of secure wireless Web access to enterprise data

Write customized wireless applications with power of iSeries

IBM Toolbox for Java 2 Micro Edition

- Micro Java classes and drivers optimized for pervasive device
- Includes JDBC Micro Edition for Java application access to iSeries database and applications

iSeries Access for Wireless

- Integrated package of wireless middleware
- Includes iSeries Navigator features for wireless systems management



WebSphere Development Studio for iSeries

WebSphere Development Studio will integrate the WebSphere Studio Workbench

WebSphere Studio Workbench is a superset of the open-source Eclipse Integrated Development Environment

- Open tooling infrastructure
- Integration platform for IBM and non-IBM tools

One-stop, integrated development environment

- Tools for everything from traditional to e-business development

Will be delivered as a no-charge upgrade with Software Subscription



50,000 copies shipped since May 23, 2001

WebSphere Portal Server for iSeries*

WebSphere software

Enables secure access to dynamic information, application and people

- Single point of entry incorporating industry-leading Personalization technologies

Provides an open framework for creating multiple portal solutions

- Business-to-Employee (B2E)
- Business-to-Business (B2B)
- Business-to-Commerce (B2C)
- Ideal for application portlets, syndicated content and collaboration

The screenshot displays a web portal interface with several portlets and navigation elements:

- NEWS** portlet: Contains a section titled "YOU AND IBM" with a sub-section "Quality and health care" and a link to "read". Below this are two columns: "Your Money" and "Your Health", each with introductory text and links to "2002 program" and "prescription drugs" respectively.
- SEARCH** portlet: Features radio buttons for "BluePages - Advanced", "w3 - Advanced", and "ibm.com - Advanced", a search input field, and a "GO" button. Below the search field is a message: "Can't find what you're looking for? Go to the [Search help](#) page."
- MARKET REPORT** portlet: A red bar with the text "MARKET REPORT" and "Edit" and navigation icons.
- SCORECARD** portlet: A red bar with the text "SCORECARD" and navigation icons.
- FORUMS** portlet: A teal bar with the text "FORUMS" and "Edit" and navigation icons. Below it is a "Links:" section with two links: "forums.hardware.as400" and "forums.hardware.iseries".
- At the bottom of the main content area, there are two more portlets: "Your Life" and "Your Career".

Enables access anytime, anywhere

*General availability of WebSphere Portal Server 4.1 is planned for 4th quarter of 2002



Domino⁷ and Advanced Collaboration

Domino 6

- Major release with continued focus on ease-of-use and TCO
- Extends client mobility advantage
- Provides enriched application environment
- Simplifies deployment and management



Exploiting OS/400 V5R2 enterprise-class performance

- Highly scalable groupware options extended from i270 to i890
- Domino servers benefit from improved file system performance
- Domino Web serving integrated with OS/400 Digital Certificate Manager and SSL accelerator

IBM @server iSeries

EXCHANGE YOUR EXCHANGE

iNOTES ACCESS FOR MICROSOFT OUTLOOK



iSeries e-Output

InfoPrint Server for iSeries

- New PDF and e-mail capabilities

InfoPrint Designer for iSeries

- Enhanced graphical output design

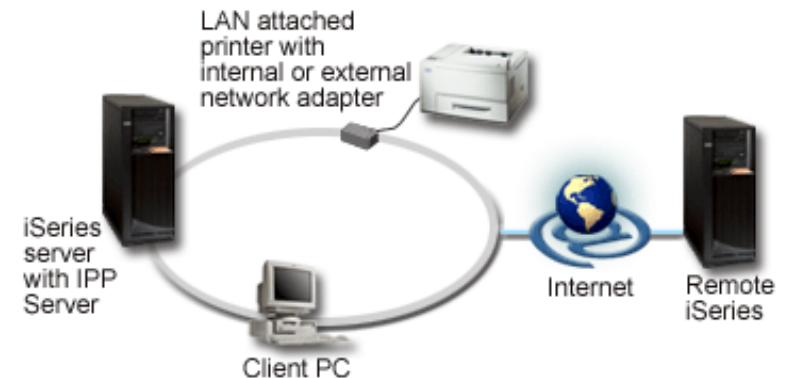


e-Output server in OS/400

- PDF output distribution integrated with iSeries Access
- Standard API access to PDF and e-mail functions
- Internet Print Protocol (IPP)

Infoprint 85 and 105 printers

- Supported with Print Services Facility for OS/400



Project eLiza

OS/400 exploits IBM's blueprint for self-managing systems

- Self-protecting
 - Enterprise Identity Mapping
 - Digital signatures and intrusion detection
- Self-optimizing
 - Dynamic LPAR
 - Self-learning DB2 UDB Automatic Index Advisor
- Self-healing
 - Switched disk support for improved availability
 - Agent Building Learning Environment (ABLE) for problem management*
- Self-configuring graphical wizards for managing
 - Performance and multiple workloads
 - Switched disk clusters and high availability
 - Security and network
 - Storage and system backups



*NOTE: ABLE is a project out of IBM Research to reduce human intervention through using artificial intelligence when diagnosing hardware and software errors. ABLE will debut first with iSeries and OS/400 V5R2.

Summary

iSeries J Announcement at A Glance

- **i890 32-way with POWER4 provides unmatched iSeries growth**

Unparalleled Scalability

- **Enterprise IT Management Made Simple with OS/400 V5R2**

Everybody Wins !

- **Delivering outstanding flexibility for adding new workloads**

Consolidate Servers...Expand Business

- April 29, 2002 Announcement
- June 14, 2002 i890 with OS/400 V5R2 Limited Availability (English only)
- August, 2002 OS/400 V5R2 Worldwide General Availability

<http://www.ibm.com/eserver/series/>



Enterprise IT Management Made Simple

Capacity Upgrade on Demand

OS/400 V5R2

WebSphere Development Studio

64-Bit Linux

32-way, 64-Bit POWER4 i890

Enterprise Identity Mapping

Adaptive e-transaction Server

Innovative Technology

Application Flexibility

Apache Web
Caching Accelerator

Lotus Domino 6

Switched Disk Clustering

Virtual Ethernet

Microsoft⁷ Cluster Service

iSeries Navigator

OS/400 PASE with AIX 5L

SAN Switch Fabric

Wireless-Web Micro Edition

Secure Sockets Accelerator

New Tools for e-business

LPAR Sub-capacity Pricing

Project eLiza

WebSphere Portal Server

Multiple DB2[™] UDB Namespaces



iSeries Access for Web

DB2 UDB Open SQL Standards



Trademarks and Disclaimers

© IBM Corporation 1994-2002. All rights reserved.

References in this document to IBM products or services do not imply that IBM intends to make them available in every country.

The following terms are trademarks or registered trademarks of International Business Machines Corporation in the United States, other countries, or both:

400	BRMS	Host Integration Series	JustMail	Payment Manager	Stylized [®]
ADSTAR	Client Series	Host on Demand	MQSeries	Payment Server	SystemView
Advanced Function Printing	ClusterProven	Host Publisher	MQSeries Integrator	PCOM	VisualAge for Java
AFP	CODE/400	HTTP Server for AS/400	Net.Commerce	PowerPC	VisualAge for RPG
AIX	DataGuide	IBM	Net.Data	PowerPC AS	WebSphere
AnyNet	DB2	IBM Logo	Netfinity	Print Service Facility	WebSphere Advanced Edition
Application Development	DB2 Extenders	IBM Network Station	NetView	pSeries	WebSphere Commerce Suite
APPN	DB2 UDB for AS/400	Information Warehouse	NUMA-Q	PSF	WebSphere Development Tools for AS/400
AS/400	DB2 Universal	Integrated Language Environment	OfficeVision	S/390	WebSphere Standard Edition
AS/400e	e-business logo	Intelligent Printer Data Stream	OS/2	SanFrancisco	Workpad
AT	e(logo) Server	IPDS	Operating System/400	Screen Publisher	xSeries
BrioQuery	Enterprise Storage Server	iSeries	OS/400	SmoothStart	

cc:Mail, Domino.Doc, Freelance, LearningSpace, Lotus, Lotus Domino, Lotus Notes, iNotes, QuickPlace, Sametime, and Word Pro are trademarks of Lotus Development Corporation in the United States, other countries, or both.

Tivoli and NetView are trademarks of Tivoli Systems Inc. in the United States, other countries, or both.

C-bus is a trademark of Corollary, Inc. in the United States, other countries, or both.

Java and all Java-based trademarks and logos are trademarks or registered trademarks of Sun Microsystems, Inc. in the United States, other countries, or both.

Microsoft, Windows, Windows NT, and the Windows logo are trademarks of Microsoft Corporation in the United States, other countries, or both.

PC Direct is a trademark of Ziff Communications Company in the United States, other countries, or both and is used by IBM Corporation under license.

ActionMedia, LANDesk, MMX, Pentium and ProShare are trademarks of Intel Corporation in the United States, other countries, or both.

IBM's VisualAge products and services are not associated with or sponsored by Visual Edge Software, Ltd.

Linux is a registered trademark of Linus Torvalds.

UNIX is a registered trademark of The Open Group in the United States and other countries.

SET and the SET Logo are trademarks owned by SET Secure Electronic Transaction LLC.

Other company, product and service names may be trademarks or service marks of others.

Information is provided "AS IS" without warranty of any kind.

All customer examples described are presented as illustrations of how those customers have used IBM products and the results they may have achieved. Actual environmental costs and performance characteristics may vary by customer.

Information in this presentation concerning non-IBM products was obtained from a supplier of these products, published announcement material, or other publicly available sources and does not constitute an endorsement of such products by IBM. Sources for non-IBM list prices and performance numbers are taken from publicly available information, including vendor announcements and vendor worldwide homepages. IBM has not tested these products and cannot confirm the accuracy of performance, capability, or any other claims related to non-IBM products. Questions on the capability of non-IBM products should be addressed to the supplier of those products.

All statements regarding IBM future direction and intent are subject to change or withdrawal without notice, and represent goals and objectives only. Contact your local IBM office or IBM authorized reseller for the full text of the specific Statement of Direction.

Some information in this presentation addresses anticipated future capabilities. Such information is not intended as a definitive statement of a commitment to specific levels of performance, function or delivery schedules with respect to any future products. Such commitments are only made in IBM product announcements. The information is presented here to communicate IBM's current investment and development activities as a good faith effort to help with our customers' future planning.

Performance is based on measurements and projections using standard IBM benchmarks in a controlled environment. The actual throughput or performance that any user will experience will vary depending upon considerations such as the amount of multiprogramming in the user's job stream, the I/O configuration, the storage configuration, and the workload processed. Therefore, no assurance can be given that an individual user will achieve throughput or performance improvements equivalent to the ratios stated here.

Photographs shown are of engineering prototypes. Changes may be incorporated in production models.

