

# IBM ^ iSeries



*Ian Jarman*  
*iSeries Product Manager*

# ***IT Management Made Simple***

## **iSeries is one of IBM's most successful businesses**

- 485,000 installed around the world
- Customers range from small businesses to large multi-national companies

## **Thousands of industry-specific solutions**

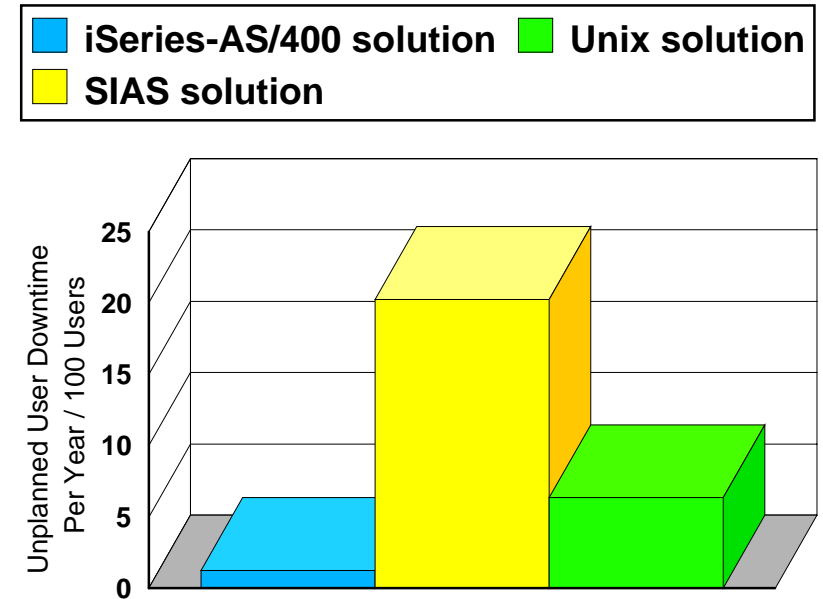
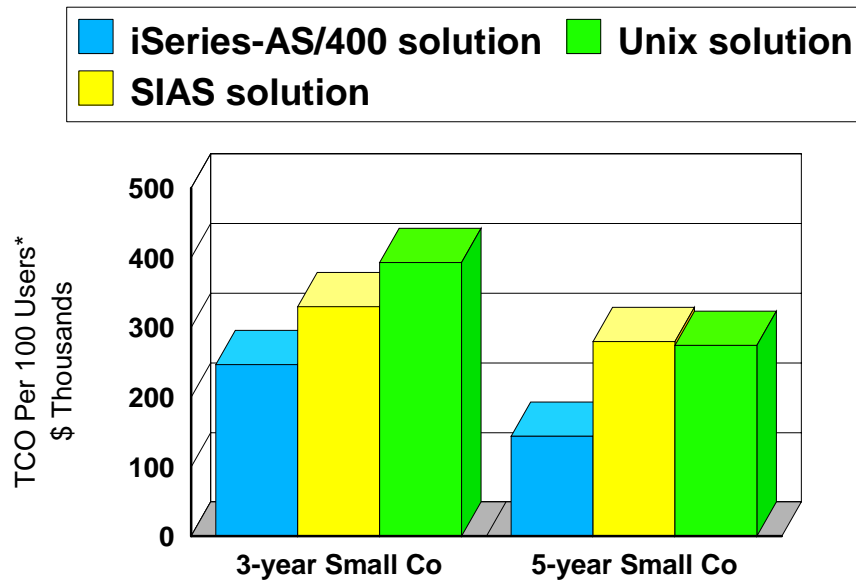
- Manufacturing, Banking, Distribution, Healthcare, Casinos, Retail, Government.....

## **What Customers Tell Us Is Important...**

- Solutions choice
- Rapid application development
- Reliability and security
- Low cost to manage

# Low Staffing Costs and High Availability = Low TCO

Note: SIAS = Standard Intel Architecture Servers



## IT Staff to run iSeries\*

- Only 2/3 the staff of Unix solutions
- Only 40% of the staff of SIAS solutions

\* Source "Server Cost of Ownership in ERM Customer Sites: A Total Cost of Ownership (TCO) Study" IDC September 2001

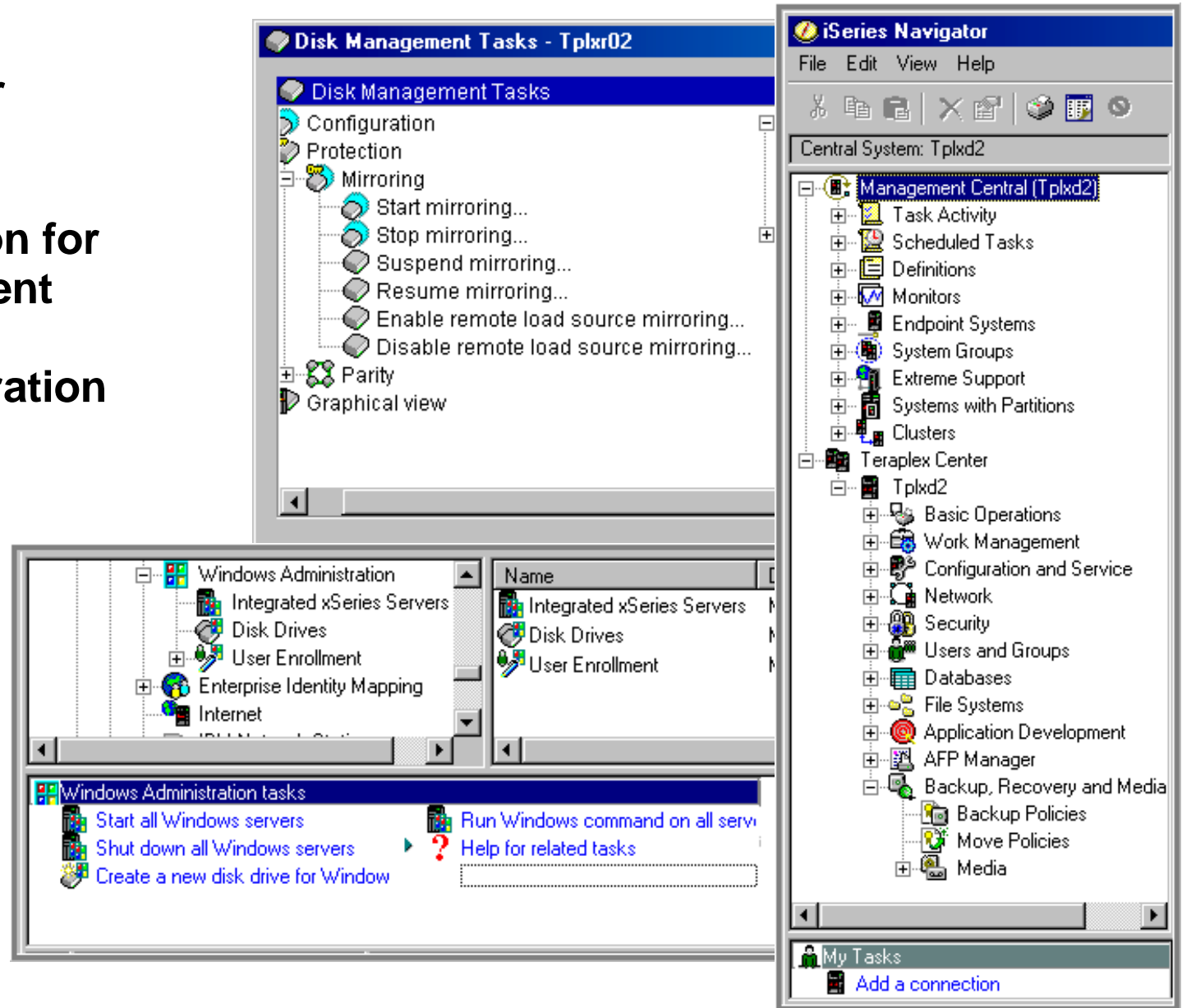
# OS/400

Manage and monitor operations

Extensive automation for workload management

Self-guided configuration wizards

Simplification of complex management tasks



# Workload Manager

The screenshot displays the IBM Workload Manager (WLM) interface. On the left is a tree view of system components, including Basic Operations, Work Management, Active Jobs, Server Jobs, Job Queues, Output Queues, Subsystems, and Memory Pools. The 'Active Jobs' window is open, showing a table of active jobs with columns for Job Name, Detailed Status, Current User, Type, and CPU %.

| Pool        | Description                        | Current Size (MB) | Current Threads | Maximum Eligible | Total Faults |
|-------------|------------------------------------|-------------------|-----------------|------------------|--------------|
| Machine     | Used by internal machine functions | 567.88            | 100             | No maximum       | .0           |
| Base        | Default system pool                | 3,989.62          | 178             | 97               | .9           |
| Interactive | Used for interactive work          | 564.75            | 1               | 227              | .0           |
| Spool       | Used for printing                  | .25               | 0               | 1                | .0           |

| Job Name   | Detailed Status            | Current User | Type                | CPU % |
|------------|----------------------------|--------------|---------------------|-------|
| lansbs     | Waiting for dequeue        | Qsys         | Subsystem           | 0.0   |
| Qbatch     | Waiting for dequeue        | Qsys         | Subsystem           | 0.0   |
| Qcmn       | Waiting for dequeue        | Qsys         | Subsystem           | 0.0   |
| Qacsotp    | Waiting for request        | Quser        | Prestart communi... | 0.0   |
| Qlzpser    | Waiting for request        | Quser        | Prestart communi... | 0.0   |
| Qnmapingd  | Waiting for request        | Quser        | Prestart communi... | 0.0   |
| Qnmarexecd | Waiting for request        | Quser        | Prestart communi... | 0.0   |
| Qnpsevr    | Waiting for request        | Quser        | Prestart communi... | 0.0   |
| Qzrcsvr    | Waiting for request        | Quser        | Prestart communi... | 0.0   |
| Qzscsvr    | Waiting for request        | Quser        | Prestart communi... | 0.0   |
| Qctl       | Waiting for dequeue        | Qsys         | Subsystem           | 0.0   |
| Dsp01      | Waiting for dequeue        | Qsecofr      | Interactive         | 0.0   |
| Qsyscd     | Waiting for event          | Qpgmr        | Batch               | 0.0   |
| Qdomino1   | Waiting for dequeue        | Qsys         | Subsystem           | 0.0   |
| Qinter     | Waiting for dequeue        | Qsys         | Subsystem           | 0.0   |
| Qpadev0002 | Waiting for workstation... | Davea        | Interactive         | 0.0   |
| Qserver    | Waiting for dequeue        | Qsys         | Subsystem           | 0.0   |
| Qpwfserv   | Waiting for request        | Quser        | Prestart batch      | 0.0   |

**Extensive automation for managing multiple workloads**



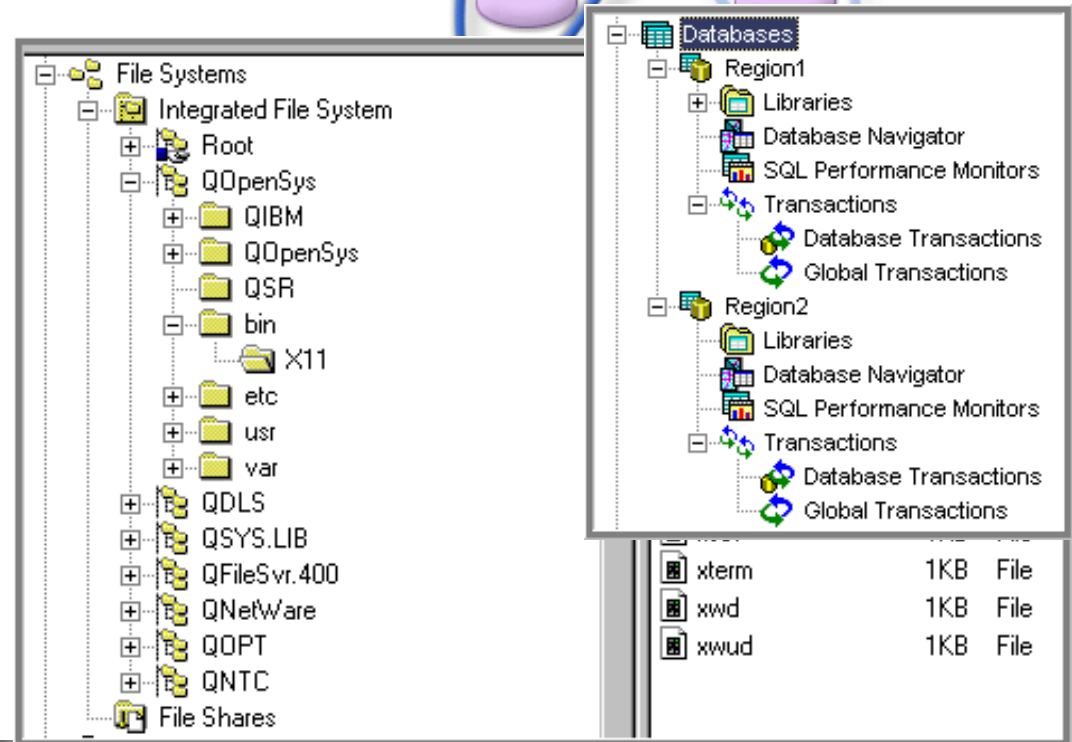
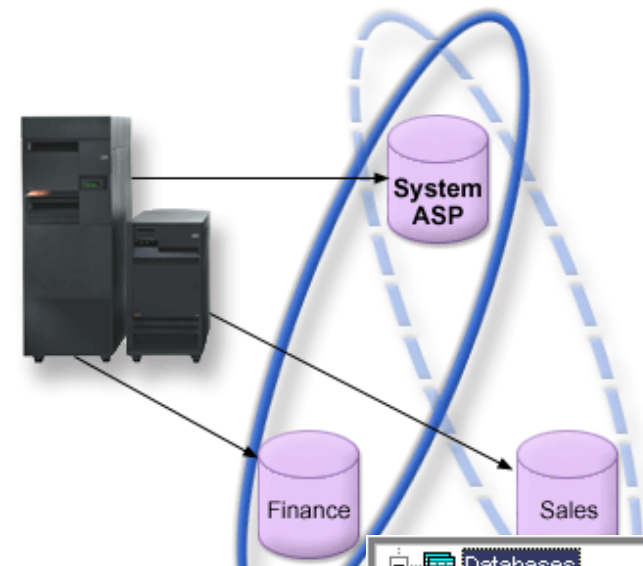
# Open Database and File System

## IBM DB2 UDB for iSeries

- A fully integrated, object-based and optimized relational database

## Integrated File System

- File server & directory support
- Compatible with Unix standards
- Integrated with Windows servers



# e-Output Process Integration

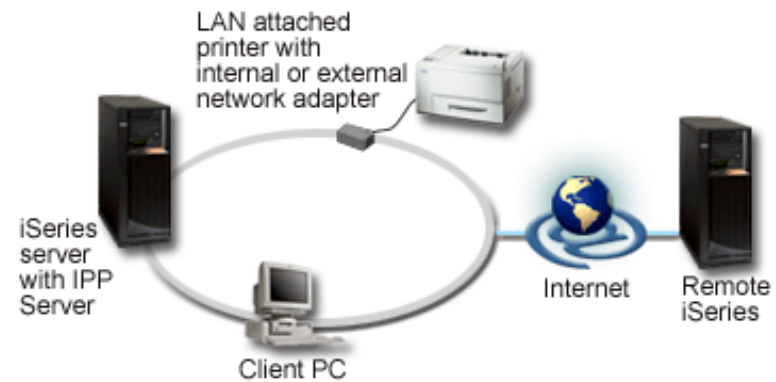
## e-Output server in OS/400

- Full print services for robust output management
- Internet Print Protocol (IPP)

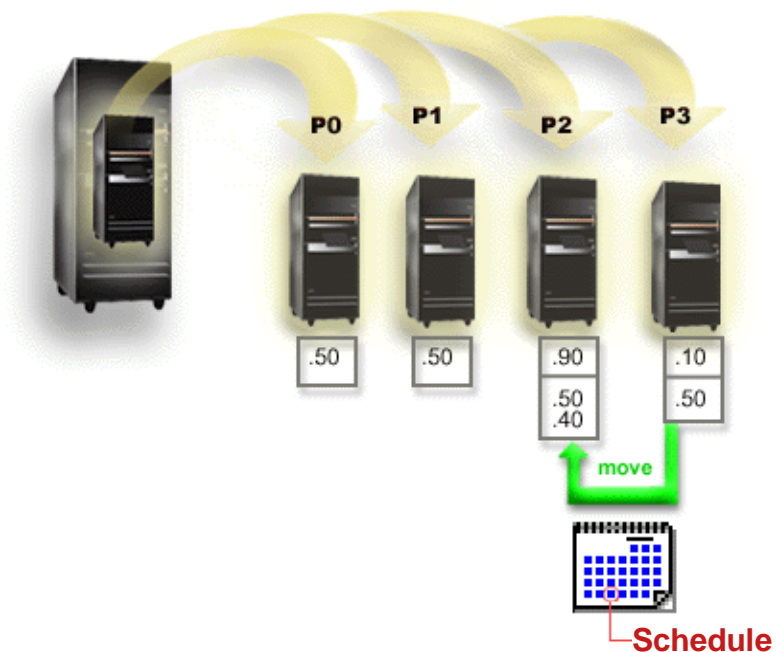


## Infoprint Server and Designer for iSeries

- PDF and e-mail integration
- Enhanced graphical output design



# Flexible Performance Management



Dynamic Logical Partitioning

Partitioning of a single processor

Capacity Upgrade on Demand



# **WebSphere Development Studio for iSeries**

**Java, RPG, COBOL, C, C++**

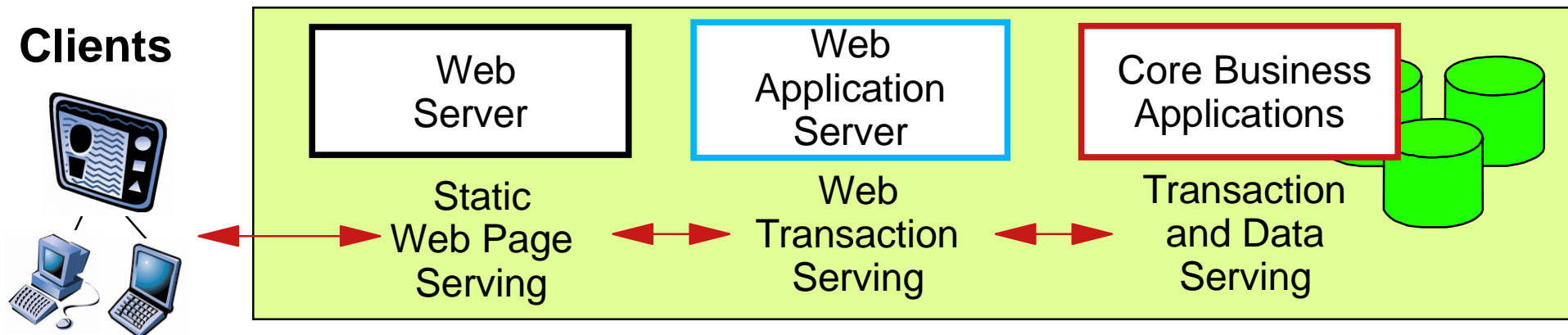
**New WebSphere Studio Workbench**

**One-stop, integrated development environment**

**Tools for everything from traditional to e-business development**



# *e-infrastructure with WebSphere*



**OS/400 includes IBM HTTP Server Powered by Apache**

**IBM WebSphere Application Server**

**IBM WebSphere Commerce Suite**

# Lotus Domino, e-mail and Advanced Collaboration

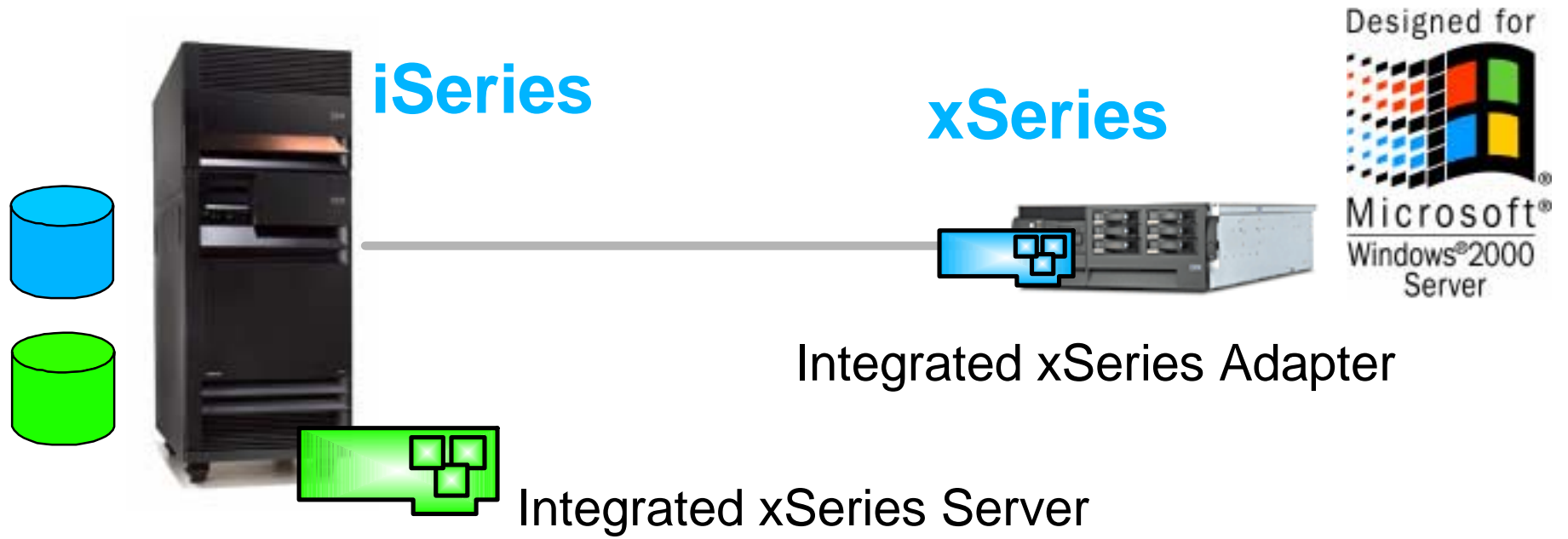


IBM @server iSeries

**EXCHANGE YOUR EXCHANGE** iNOTES ACCESS FOR MICROSOFT OUTLOOK

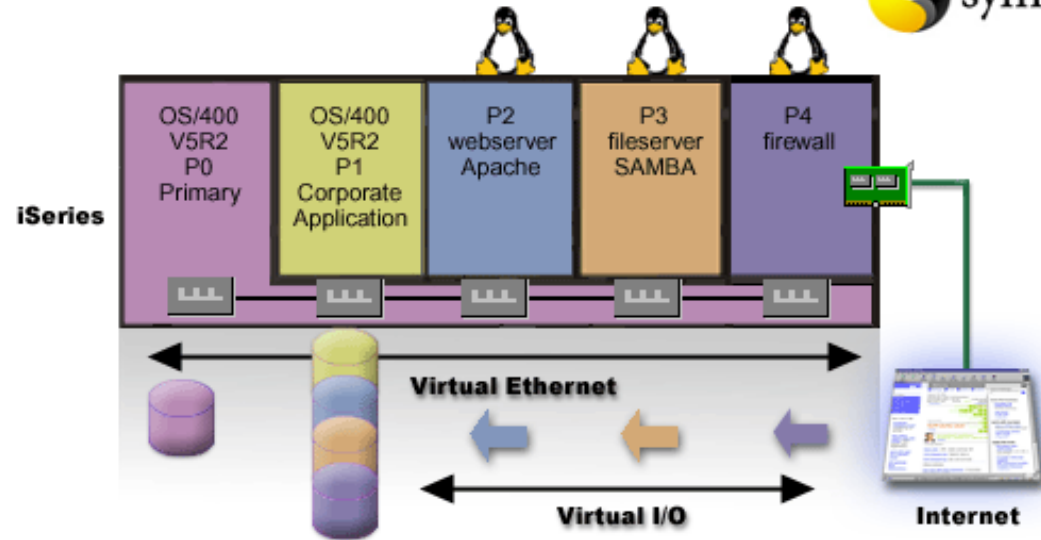
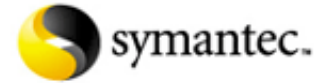


# *iSeries and Windows Server Management*



**Lowering the costs of user administration and storage management**

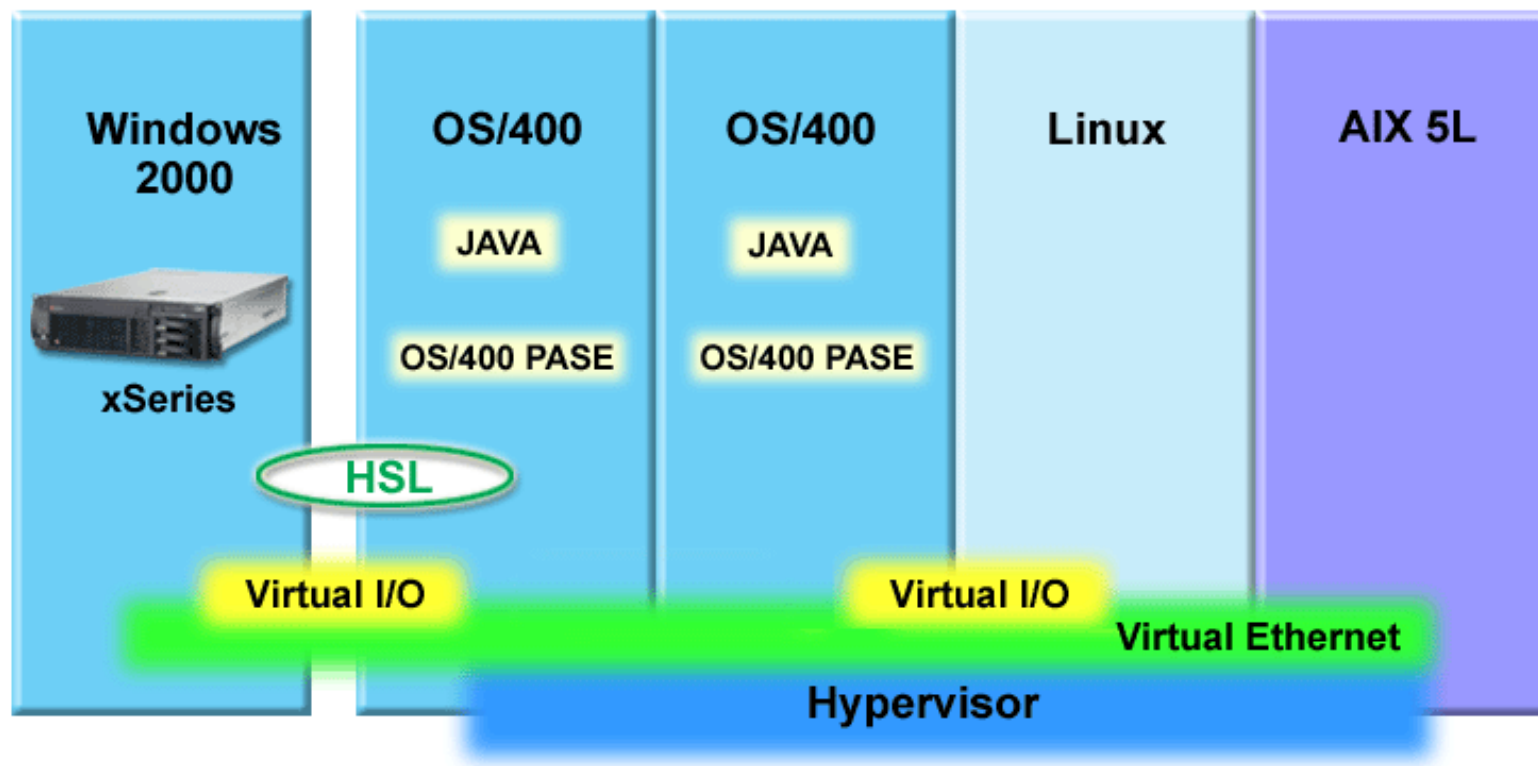
# iSeries and Linux



# IBM @server POWER Processor Roadmap



# IT Management Made Simple



**Lowering e-infrastructure management costs across multiple environments**

\*Statement of Direction: This presentation contains IBM plans and directions. Such plans are subject to change without notice.



# Trademarks and Disclaimers

© IBM Corporation 1994-2002. All rights reserved.

References in this document to IBM products or services do not imply that IBM intends to make them available in every country.

The following terms are trademarks or registered trademarks of International Business Machines Corporation in the United States, other countries, or both:

|                            |                           |                                 |                      |                        |  |
|----------------------------|---------------------------|---------------------------------|----------------------|------------------------|--|
| 400                        | BRMS                      | Host Integration Series         | JustMail             | Payment Manager        | Stylized <sup>®</sup>                  |
| ADSTAR                     | Client Series             | Host on Demand                  | MQSeries             | Payment Server         | SystemView                             |
| Advanced Function Printing | ClusterProven             | Host Publisher                  | MQSeries Integrator  | PCOM                   | VisualAge for Java                     |
| AFP                        | CODE/400                  | HTTP Server for AS/400          | Net.Commerce         | PowerPC                | VisualAge for RPG                      |
| AIX                        | DataGuide                 | IBM                             | Net.Data             | PowerPC AS             | WebSphere                              |
| AnyNet                     | DB2                       | IBM Logo                        | Netfinity            | Print Service Facility | WebSphere Advanced Edition             |
| Application Development    | DB2 Extenders             | IBM Network Station             | NetView              | pSeries                | WebSphere Commerce Suite               |
| APPN                       | DB2 UDB for AS/400        | Information Warehouse           | NUMA-Q               | PSF                    | WebSphere Development Tools for AS/400 |
| AS/400                     | DB2 Universal             | Integrated Language Environment | OfficeVision         | S/390                  | WebSphere Standard Edition             |
| AS/400e                    | e-business logo           | Intelligent Printer Data Stream | OS/2                 | SanFrancisco           | Workpad                                |
| AT                         | e(logo) Server            | IPDS                            | Operating System/400 | Screen Publisher       | xSeries                                |
| BrioQuery                  | Enterprise Storage Server | iSeries                         | OS/400               | SmoothStart            |  |

cc:Mail, Domino.Doc, Freelance, LearningSpace, Lotus, Lotus Domino, Lotus Notes, iNotes, QuickPlace, Sametime, and Word Pro are trademarks of Lotus Development Corporation in the United States, other countries, or both.

Tivoli and NetView are trademarks of Tivoli Systems Inc. in the United States, other countries, or both.

C-bus is a trademark of Corollary, Inc. in the United States, other countries, or both.

Java and all Java-based trademarks and logos are trademarks or registered trademarks of Sun Microsystems, Inc. in the United States, other countries, or both.

Microsoft, Windows, Windows NT, and the Windows logo are trademarks of Microsoft Corporation in the United States, other countries, or both.

PC Direct is a trademark of Ziff Communications Company in the United States, other countries, or both and is used by IBM Corporation under license.

ActionMedia, LANDesk, MMX, Pentium and ProShare are trademarks of Intel Corporation in the United States, other countries, or both.

IBM's VisualAge products and services are not associated with or sponsored by Visual Edge Software, Ltd.

Linux is a registered trademark of Linus Torvalds.

UNIX is a registered trademark of The Open Group in the United States and other countries.

SET and the SET Logo are trademarks owned by SET Secure Electronic Transaction LLC.

Other company, product and service names may be trademarks or service marks of others.

Information is provided "AS IS" without warranty of any kind.

All customer examples described are presented as illustrations of how those customers have used IBM products and the results they may have achieved. Actual environmental costs and performance characteristics may vary by customer.

Information in this presentation concerning non-IBM products was obtained from a supplier of these products, published announcement material, or other publicly available sources and does not constitute an endorsement of such products by IBM. Sources for non-IBM list prices and performance numbers are taken from publicly available information, including vendor announcements and vendor worldwide homepages. IBM has not tested these products and cannot confirm the accuracy of performance, capability, or any other claims related to non-IBM products. Questions on the capability of non-IBM products should be addressed to the supplier of those products.

All statements regarding IBM future direction and intent are subject to change or withdrawal without notice, and represent goals and objectives only. Contact your local IBM office or IBM authorized reseller for the full text of the specific Statement of Direction.

Some information in this presentation addresses anticipated future capabilities. Such information is not intended as a definitive statement of a commitment to specific levels of performance, function or delivery schedules with respect to any future products. Such commitments are only made in IBM product announcements. The information is presented here to communicate IBM's current investment and development activities as a good faith effort to help with our customers' future planning.

Performance is based on measurements and projections using standard IBM benchmarks in a controlled environment. The actual throughput or performance that any user will experience will vary depending upon considerations such as the amount of multiprogramming in the user's job stream, the I/O configuration, the storage configuration, and the workload processed. Therefore, no assurance can be given that an individual user will achieve throughput or performance improvements equivalent to the ratios stated here.

Photographs shown are of engineering prototypes. Changes may be incorporated in production models.

