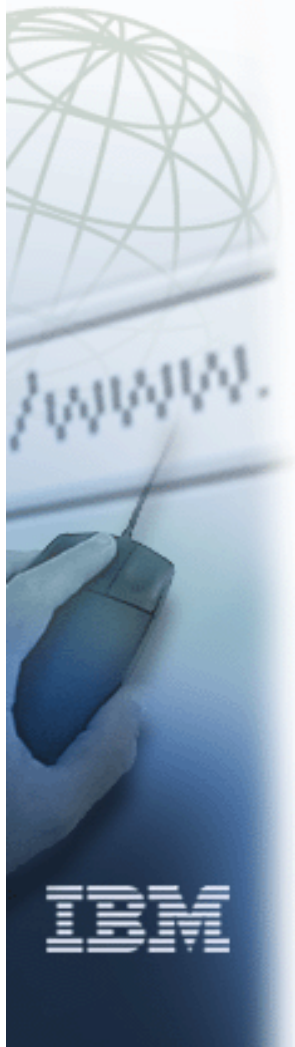


ibm.com



e-business



F03DP18.prz

# Notes from the Beach

DP18

## ITSO iSeries Technical Forum

John Taylor, Typex



# Redbooks

International Technical Support Organization

© 2003 IBM Corporation

# Abstract

---

- ◆ What are the options for remote and mobile working? What comes with Notes and Domino? What can IBM iSeries add? What about connectivity? What else do I need? Can I really work from the beach at last, including 'surfing' the Web? Where do 'Palms' fit in? What are 'Island' settings? Do I need to 'shell' out a fortune?
- ◆ Level: Basic
- ◆ Prerequisite: A dream

# Agenda

---

- ▶ An overview of 'eMobility'
  - ◆ aka 'flexible working', teleworking', 'telecommuting'
  - ◆ Benefits and Costs
- ▶ Range of approaches & devices
- ▶ IBM/Lotus/AT&T product set
  - ◆ Sample IBM/Lotus/AT&T 'Starter Pack'
- ▶ Technical Issues (optional)
- ▶ Heading for the Beach
- ▶ Implementation issues
- ▶ Summary
- ▶ Appenices
  - ◆ Glossary
  - ◆ Wireless Application Enablement (Basics)

# What we will not cover

---

- ▶ m-commerce
- ▶ B2C (other than as end user)
- ▶ non-IBM/Lotus/AT&T products
- ▶ detailed technical aspects

---

# eMobility Overview

---



# A Growing Trend

---

- According to a recent IDC report, the worldwide market for software that allows companies to send out key information from their computer systems to employees' wireless devices will grow at 61 percent a year, and the number of mobile professionals is expected to reach 27 million in the next three years.
  - Lotus
- 50m US tele-workers in 2001. 100m in 2003.
  - Gartner
- Over a billion cell phones are in use today with over 2 billion forecast by 2006
- As a result the number of Internet users will double and 2/3rds will be accessing it wirelessly

# Business Benefits

---

- ▶ Real estate savings
- ▶ Employee retention
- ▶ Productivity
- ▶ Lower absenteeism
- ▶ Increased revenue

# Issues

---

- ▶ Employee Resistance
  - ◆ Why? How will I be kept in the loop? How will I stay visible and get promoted?
- ▶ Management Resistance
  - ◆ How do I know they are working? How will I foster team spirit? How will I communicate consistently?



# Who is doing it?

---

- ▶ Examples
  - ◆ worker on the factory floor
  - ◆ real estate agent showing and bidding on homes
  - ◆ insurance agent at the site of an accident
  - ◆ salesman at the customer's office
  - ◆ civil engineer on a construction site
  - ◆ repair man
- ▶ Most common today
  - ◆ Sales
  - ◆ Mobile professionals
  - ◆ Key executives.

# IBM's Own Experience

---

- ▶ Business
  - ◆ Costs \$20M pa
  - ◆ Savings \$100M pa
    - Real estate (buildings, parking, security, janitors, etc)
  - ◆ Broke even in Year 1
- ▶ Employee (survey)
  - ◆ Improved work, committment, productivity, morale, job satisfaction,
  - ◆ Little change to communications and teamwork
  - ◆ Negative feelings on career advancement
- ▶ Customers
  - ◆ Increased Cust Sat. More face-to-face time. Faster response to enquiries.

# IBM Categories of Remote/Mobile

---

- ◆ Mobile/Telecommuter
  - on the move and uses shared workspace i.e. mobility/visitor centers etc. No dedicated workspace
- ◆ Customer Location/Alternate Location
  - no dedicated workspace
- ◆ Work at Home
  - works the regular work period from home
- ◆ Traditional Office
  - dedicated office space or cubicle
- ◆ Traditional Non-Office
  - housed within a location but by the nature of their work, does not require dedicated office space
- ◆ Frequent Traveler/Transition to Mobility
  - dedicated workspace and may require full mobility tools.  
Mainly traveling, working at home or will transition to mobile

# Offline Work Requirements

---

- ▶ Most office-based processes
  - ◆ Email
  - ◆ Calendars
  - ◆ To Do
  - ◆ Directory
  - ◆ Web browsing
  - ◆ PC office files
  - ◆ Conferencing
  - ◆ Telephone
- ▶ Optional specialist items
  - ◆ data capture

---

# Devices

---



# Device Types

---

- ▶ PC
  - ◆ Desktop, Laptop
- ▶ PDAs
  - ◆ Palmtop
- ▶ Mobile (cell) Phones
  - ◆ WAP phones
  - ◆ SMS devices
  - ◆ Smart Phones/'Hybrid' Devices
- ▶ Pagers

# PC Applications

---

- ▶ Office applications
  - ◆ WP, spreadsheet, etc.
  - ◆ MS Office, Lotus SmartSuite, ...
  - ◆ PC File Serving
  - ◆ fax
- ▶ Windows My Briefcase
  - ◆ offline edit
  - ◆ offline print
- ▶ Collaborative applications
  - ◆ email, calendar, PIM, conferencing

# IBM ThinkPad (example)

---

- ◆ Range of screen sizes
- ◆ TrackPoint mouse
- ◆ UltraBay
  - Floppy/DVD
  - Spare battery
  - WorkPad cradle
- ◆ InfraRed & wireless
- ◆ Camera and microphone
- ◆ Power Settings
- ◆ Carrying case
- ◆ Keyboard light





# Palm Devices (PDAs)

---

- ◆ Personal Digital Assistant
- ◆ Hand/Palm-held PC
- ◆ Personal Information Management (PIM)
  - diary, address book, to-do, alarm, calculator
- ◆ Synch Web downloads
  - e.g. newspaper
- ◆ Applications
- ◆ Games



# PDA OS Choices

---

- ▶ Palm OS
  - ◆ Palm, IBM, Sony and others
  - ◆ easy to use, usually mono, hence long battery life
  - ◆ Griffiti handwriting recognition
- ▶ MS PocketPC
  - ◆ HP, etc
  - ◆ more PC feel, usually colour, 'pocket' version of MS pgms, poor battery life
- ▶ Psion/Symbian/EPOC
  - ◆ Psion/Symbian only
  - ◆ inbuilt keyboard, good software

# Optional PDA Devices

---

- ▶ Keyboard (wireless or connected)
- ▶ Wireless modems
- ▶ Digital camera
- ▶ Projector
- ▶ GPS navigation and voice-guided directions
- ▶ Scanners
- ▶ Headphones

# IBM WorkPad (example)

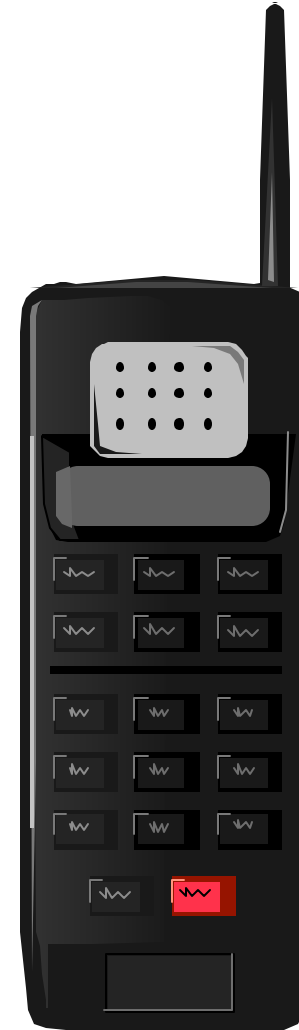
---

- ◆ Based on Palm
  - Currently c500 or c505
- ◆ WorkPad Software
  - Palm OS v4.0
  - IBM Mobile Connect
    - directly transfer data from multiple devices to corporate systems without a PC
- ◆ Optional features
  - Lotus EasySync Pro
  - IBM DB2 Everyplace Personal Edition
  - Add-on software from other manufacturers
    - ▶ Financial Applications, Database, Forms, Games

# Mobile (cell) Phones

---

- ▶ Cellular phone network with connection to PSTN
- ▶ Geographic variations
  - ◆ GSM, Tri-band, CDPD, i-mode, etc.
  - ◆ check coverage
- ▶ What can they do apart from voice?
  - ◆ Modem
    - connect your PC or PDA
  - ◆ SMS
    - text messaging
  - ◆ WAP
    - mini Web browser



# Hybrid Devices

---

- ▶ What are 'hybrid' devices?
  - Combination of:
    - PDA
    - Mobile (cell) phone
  - aka
    - 'All-in-One'
    - Wireless communicators
    - Smartphones
- ▶ Why 'hybrid' devices?
  - ◆ Only one bit of kit
  - ◆ Access emails via Internet
  - ◆ Single contact list

# Connectivity Options

---

- ◆ Wired WAN
  - Landline Telephone
  - Direct or via Internet
- ◆ Wireless WAN
  - Cellular/Mobile phone telephone
    - 2G (current). SMS & WAP. 9.6K
    - 2.5G/GPRS: Replaces WAP. 56K. 'Always on'.
    - 3G: 3rd Generation. Broadband speeds.

# Connectivity Options, contd.

---

- ◆ Wireless 'LAN'
  - Infrared
    - device to device
  - WLAN/Wi-Fi.
    - Integrates to LAN via base station bridge. Security issues. Two main standards:
      - ▶ 802.11b. 11Mbps.
      - ▶ 802.11a/h/g/etc. 54Mbps. Successor to 11b
    - Use WEP for 128bit encryption.
  - Bluetooth
    - Personal 'LAN'. Device to peripheral. 10m+ Low power drain, hence PDAs and mobile phones. Low corporate acceptance.



# Wireless Issues

---

- ▶ Internal
  - ◆ Works for historic bldg, classroom, meeting room, temporary site, small group, hostile environment.
- ▶ External
  - ◆ ' Hot spots' in airports, hotels, coffee shops, conferences, etc.
- ▶ Plane 'Pilot' Experiences
  - ◆ Plane connection can be slow
  - ◆ Involves PC reconfiguration
  - ◆ Expensive (£30/flight or \$1/email)
  - ◆ Different logon and billing for terminal, lounge, coffee shop and plane.
    - USA Today, 11/2/03

# Example

---

- ▶ IBM PartnerWorld (BPs) 2003 Conference
  - ◆ Complimentary Palm i705 Wireless PDA
  - ◆ Loaded with all the conference details
  - ◆ Replaces the hardcopy conference guide
  - ◆ Create your own calendar
  - ◆ Send and receive messages from other attendees
  - ◆ Provide immediate feedback on each session
  - ◆ Set up meetings and locate people.
  - ◆ Handy "PDA Tips" card in registration materials.
- ▶ Expensive?
  - ◆ Think about the cost of producing and then processing the paper alternatives

---

# How do Notes & Domino help?

---



# Lotus Domino

---

- ▶ Mail & Collaborative Applications
  - ◆ see other sessions
- ▶ Notes/Domino Database (NSF)
  - ◆ collection of data and code for an application
  - ◆ like an OS/400 library
- ▶ Replication
  - ◆ 'Copies' of databases on clients or servers.
  - ◆ The foundation of mobility
  - ◆ A full replica is a fully functional copy of code and data. A selective replica is a fully functional copy of code and a subset of the data
  - ◆ Replicates changes at field level

# Domino Clients

---

- ▶ Lotus Notes
- ▶ iNotes
- ▶ Web
- ▶ Mobile Notes

# Lotus Notes - Mail

---

- ▶ Mail
- ▶ Calendars
- ▶ To do
- ▶ Directory
- ▶ Use for task management

# Notes on the Road

---

- ▶ Replication
  - ◆ Principles
  - ◆ Replicating over dialup
  - ◆ 'Office' vs. 'Island'
  - ◆ Using mobile phone for dialup
  - ◆ Selective replication
- ▶ Directory Assistance
  - ◆ Lightweight directory

# What's New in Notes 6?

---

- ▶ Roaming User
  - ◆ Attribute of the user
  - ◆ Same Notes desktop experience on multiple machines
    - Welcome Page, Preferences, ID file, Bookmarks, Dictionary, etc)
    - Home, work, remote, multiple in office, moving to new hardware, etc.
- ▶ Multi-User
  - ◆ Attribute of the machine
  - ◆ Multiple users share the same PC for Notes
    - Part-time and job share, office for visitors, kiosk for factory floor
- ▶ Combine Roaming with Multi-User



# What's new in Notes 6, contd

---

- ▶ Replication Improvements
  - ◆ small items first
  - ◆ documents added to Inbox during replication
    - work on mail while replicating
  - ◆ restart after failure
  - ◆ replication of partial docs - truncate option
- ▶ Multi-threading
- ▶ Delegate support
  - ◆ a delegate creates subset of docs and sends them to the person they are delegating for as an email with doclinks - speeds up mobile users as they don't need access to all their new mail

# What's New in Domino 6?

---

- ▶ Policies
  - ◆ Enables central management of user options
    - registration, desktop, replication, security, archiving
    - makes support of remote users easier
- ▶ Network Compression
- ▶ Intent is:
  - ◆ To shorten the network connectivity time
  - ◆ To minimize the amount of data needed locally
  - ◆ To give access to info from anywhere
  - ◆ To constantly provide an up to date Notes environment

# Domino and PIM Info Synch

---

- ▶ Synch Domino & PIM info to Mobile
- ▶ Lotus EasySync Pro
  - synchronization between Notes databases and PDA
  - Client-side Synch (to PC)
  - Palm OS, Win CE, iPAQ Pocket PC
  - Email, Cals, ToDos, PAB, Journal
- ▶ IBM Mobile Connect
  - Server-side synch (to Domino)
  - Palm OS, WinCE & EPOC
  - Email, Cals, ToDos, PAB
  - ODBC, file transfer & remote install
  - Opt. DB2 Everyplace on client

# Lotus Sametime

---

- ▶ Instant Messaging
  - ◆ online awareness
  - ◆ 'chat' one-to-one or many
  - ◆ much faster than email
- ▶ Web conferencing
  - ◆ whiteboard, screen takeover, video
- ▶ Sametime on Domino server
- ▶ Sametime Connect on PC

# New in Sametime 3.0

---

- ▶ File transfer
- ▶ Announcements
- ▶ Alerts - specific tones for specific people
  - ◆ (like the Boss)
- ▶ Improved messaging and logging
- ▶ Single sign-on
- ▶ Outlook/Exchange integration
- ▶ QuickPlace3 Integration

# Sametime on the Road

---

- ▶ Sametime only
  - 'chat' while logged on with only one phone line
- ▶ Sametime Everyplace (STEP)
  - An add-on to Sametime. Provides awareness and instant messaging for mobile phone users.
- ◆ Mobile phone users can:
  - log onto Sametime by telephone
  - see who is online (same contacts list)
  - send instant messages or initiate text chat
  - click a 'call me' button
  - chat and use quick text (predefined short msgs)
  - save chat transcript
  - edit their user profile
  - schedule a mobile presence

# STEP, contd.

---

- ◆ Desktop users can:
  - see which mobile users are online
  - see which is the best way to communicate with them (instant message, phone call or e-mail)
  - send Instant Messages or chat
  - have access to mobile users' phone nos
  - save chat
- ◆ Client Support available on:
  - Pagers/SMS
  - Microbrowsers
  - Java enabled phones
  - Native clients
    - Palm, Pocket PC
    - next-generation PDAs and mobile phones.

# EveryPlace & AT&T Wireless

---

## ◆ AT&T Wireless

- ▶ 20.2 million subscribers. Largest GSM/GPRS network in the West.
- AT&T Wireless Business Solutions (ATTWS) for IBM
  - AT&T will enable over-the-air configuration of Sametime Everyplace and Lotus Domino Everyplace.
    - ▶ e.g. "Smart notifications": instant messages sent to a wireless device when a certain criterion is met.
    - ▶ e.g. access to corporate directories: A STEP 3 user might send a simple query to the corporate directory, such as "Who is John Smith", and get back his directory profile on the mobile device.
  - IBM Software Services for Lotus (ISSL) consultants and AT&T Wireless Systems Engineers will provide deployment resources to ensure quick, seamless integration for any large enterprise.



# Lotus QuickPlace

---

- ▶ Rapid Extranet deployment
  - ◆ file download
  - ◆ shared calendar
  - ◆ shared tasks
  - ◆ Domino-based security option
- ▶ QuickPlace on the Road
  - ◆ Mobile option
  - ◆ Take it off-line.
    - Establish a local copy on a desktop and seamlessly read, author and edit documents while disconnected.
    - Synchronize changes made to the local copy when reconnected to the network.

# Domino Unified Communications Services (DUCS)

---

- Unified Messaging
  - convergence of voice mail, e-mail, and fax
  - all messages are stored in a single location and can be accessed from a variety of devices, including telephones and PCs
- Unified Communications (UC)
  - extends message access to mobile phones, pagers, PDAs, and browsers
  - provides notification features that alert subscribers when they receive a message that meets certain criteria.
- Lotus has formed partnerships to deliver complete solutions. DUCS provides the platform and services on which partners can build UC solutions that use Domino store.

# Domino Off-Line Services (DOLS)

---

- ◆ Provides browser users "off-line" access to Domino Web applications. Includes:
  - developer and administrative tools
  - server-side Domino add-on task for developers to convert existing Domino applications
- ◆ Client is iNotes
- ◆ Changes are synchronized
  - Greater productivity
  - Decreased network traffic.
- ◆ Disconnected users interact as if online
  - Compose forms; edit, delete or categorize data; perform searches; trigger applets; even use business workflows.
  - Full Domino security model remains in place.
- ◆ Integrated (free) with the Domino Enterprise and Utility Servers

---

## How does iSeries help?

---



# A Domino Server

---

- ▶ Premier Domino Server
- ▶ Partitioning (subsystems)
- ▶ Most scalable (150K users)
- ▶ Fastest (<1/10th sec)
- ▶ Lowest costs (really!)
  - ◆ Dedicated (aka cheap) Domino servers
  - ◆ New 'non-dedicated' option
  - ◆ See also Zero Interactive models

# A Client Connectivity Server

---

- ▶ OS/400
  - ◆ Free file & print serving
    - Work offline, optimised for download
    - IP printing, remote OutQ,
  - ◆ free POP3 email serving
- ▶ iSeries Access
  - ◆ free iSeries Navigator
  - ◆ free iSeries Navigator for Wireless
  - ◆ 5250/Telnet Emulation (not free)

# A Mobile Middleware Server

---

- ▶ Servers play a key role in wireless solutions
- ▶ iSeries:
  - ◆ supports wireless middleware and componentry
  - ◆ supports key technologies like XML and Java (built into the operating system)
  - ◆ has strengths in availability, reliability and scalability
  - ◆ will not require new, standalone servers for each component
  - ◆ hosts existing business applications

# A Mobile Application Server

---

- ▶ History of wireless LAN apps
  - ◆ especially warehousing and retail
  - ◆ application base
    - can be wireless-enabled
- ▶ Partner support
  - ◆ Advanced Business Link
  - ◆ ClientSoft
  - ◆ Jacada
  - ◆ Lansa
  - ◆ Seagull
  - ◆ etc...



# A Directory Server

---

- ▶ Directory is required as a basis
  - ◆ IP-based name, email and telephone lookup
- ▶ The Internet standard is LDAP
- ▶ iSeries has two options
  - ◆ IBM Directory Server (was Tivoli SecureWay)
    - free, integrated part of OS/400
  - ◆ Domino Directory
    - LDAP-capable

# A Remotely Managed Server

---

- ◆ V4R5: Management Central - Pervasive
  - ▶ allows users to remotely monitor system performance and status using an internet phone, a PDA with a wireless modem or a web browser
- ◆ V5R1: Management Central - Pervasive
  - ▶ allows users to work with and manage their systems from anywhere. With your wireless device, you can:
    - ▶ Run commands across multiple systems
    - ▶ Start and view system, job, and message monitors
    - ▶ Work with jobs and messages from the monitors (hold, release, end, reply, get details, ...)
    - ▶ Manage integrated xSeries servers
- ◆ V5R2: iSeries Navigator for Wireless
  - ▶ Start and view File and B2B Activity monitors
  - ▶ Work with all iSeries Navigator tasks (not just command tasks)
  - ▶ View a summary report off-line
  - ▶ Control access to functions via Application Administration
  - ▶ Use Setup scripts to configure web application servers

# OS/400 Wireless Setup

---

- ◆ Install software
  - V5R1 Management Central - Pervasive (part of the base)
  - V5R2 5722-XP1 iSeries Access for Wireless
- ◆ Set up a web server on your central system
- ◆ Enter the URL into your internet phone, PDA, or web browser
- ◆ Monitor
  - Check the availability of your systems and any active iSeries Navigator monitors, e.g.
    - check to find out if one of your systems finished restarting
    - check an active monitor to see if any thresholds for CPU were exceeded
- ◆ Control
  - e.g. job is taking up too much CPU, you can hold or end it.

# IBM Toolbox for Java 2 Micro Edition

---

- ▶ ToolboxME for iSeries
  - ◆ Java 2 Platform, Micro Edition (J2ME) standard
  - ◆ Classes enable Java programs on wireless devices
  - ◆ includes ME Server & JdbcMe for DB2
  - ◆ "Inner Plumbing" support via Connected Limited Device Configuration (CLDC)
  - ◆ Runtime support via Mobile Information Device Profile (MIDP) APIs, built on CLDC
  - ◆ JVM support via a Java virtual machine for wireless devices
    - IBM J9 Virtual Machine
    - Sun K Virtual Machine (KVM)
    - MIDP

---

**What other software is useful?**

---



# Office Suite

---

- ▶ MS Office
- ▶ Lotus SmartSuite
- ▶ Star Office

# Remote DB2

---

- ▶ DB2 Personal
  - ◆ Windows, OS/2, Linux
- ▶ DB2 EveryPlace Personal Edition
  - ◆ local data store on the PDA for local or enterprise data
  - ◆ Palm OS, Win CE, EPOC
  - ◆ free download

# WebSphere

---

- ▶ WebSphere Everyplace Suite
  - ◆ Wireless enablement. Gateway. Management. Load balancing. Includes:
- ▶ WebSphere Transcoding Publisher
  - ◆ adapts, reformats, and filters content to make it suitable for pervasive computing.
- ▶ WebSphere Portal Server
  - ◆ aggregation of information. Personalisation. Predefined portlets. Customisable.



# WebSphere, contd.

---

- ▶ WebSphere Web Facing
  - ◆ Internet-enable existing apps incl 5250
- ▶ WebSphere Studio Tookit
  - ◆ wizards to build:
    - HTML pages for standard browsers
    - compact HTML pages for handheld devices
    - WML pages for WAP phones
- ▶ MQSeries EveryPlace
  - ◆ guaranteed message delivery

# BlueNotes Suite

---

- ▶ IBM 5620-FHM BlueNotes Document Warehouse
  - ◆ offline Notes index of file server documents
  - ◆ subset for mobile users
  - ◆ no 'drill-down' when you connect
- ▶ BlueNotes Task Manager
  - ◆ remote, scheduled, managed To Do's
  - ◆ for simple project management or task scheduling
- ▶ BlueNotes Taxonomy for Domino
  - ◆ structures the Domino Directory into hierarchies for fast lookup, e.g. by department, geography, etc.

---

# How do ISP's fit in? AT&T Example

---



# AT&T Global Network Services

---

- ▶ Was IBM Global Network/Advantis
- ▶ Office: Leased Line
  - ◆ Connects LAN to:
    - Internet (with VPN options), and/or
    - private wide area network
- ▶ Remote: Dial-Up Internet Access
  - ◆ Home use or:
  - ◆ Global Roaming
    - International numbers, local call rates
    - 2400+ POPs, 59 countries
    - e.g. Antigua, Aruba, Australia, Bahamas, Barbados, Bermuda....
    - Also works from a yacht via satellite phone

# AGNS, contd.

---

- ◆ Connects to
  - Internet or
  - office LAN connection
  - or both
- ◆ Secure access (ID & pwd)
- ◆ Internet Corporate Dialler and VPN software
  - automated software and phone list updates
  - Credit Card or corporate invoice options
- ◆ Main benefits
  - saves cost of long distance call
  - avoids hotel premium rates
  - no need for bank of modems and RAS

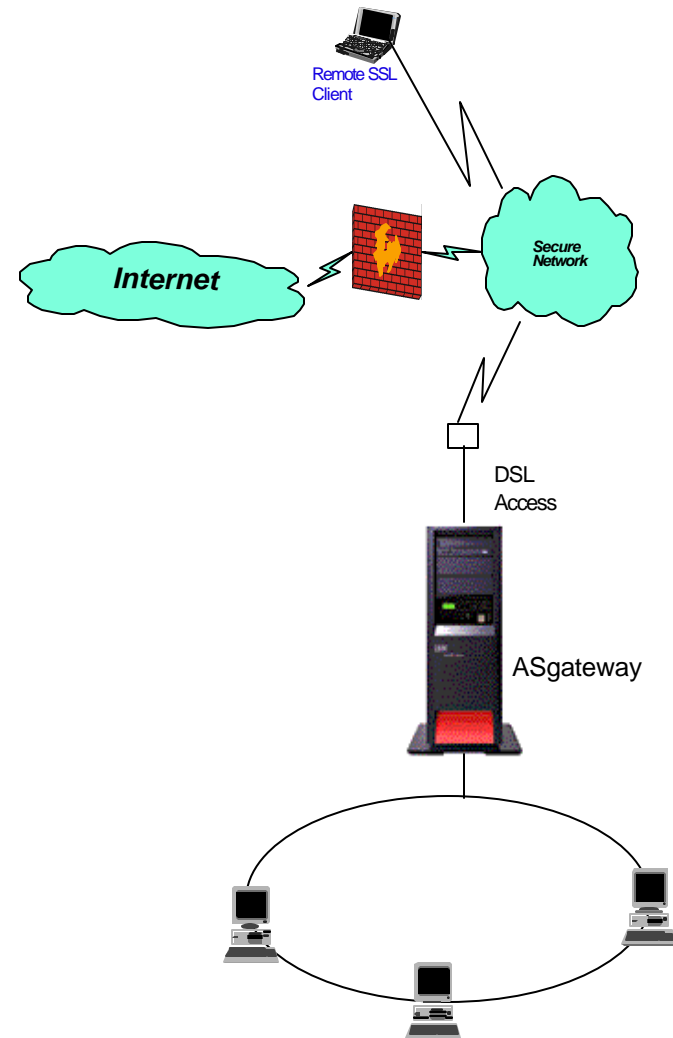
# Remote/Mobile/B2B

## ► Requirements

- Office LAN
- PCs at remote locations
- home or mobile worker, server monitoring, email, partners
- minimise modem pool
- reduce call costs

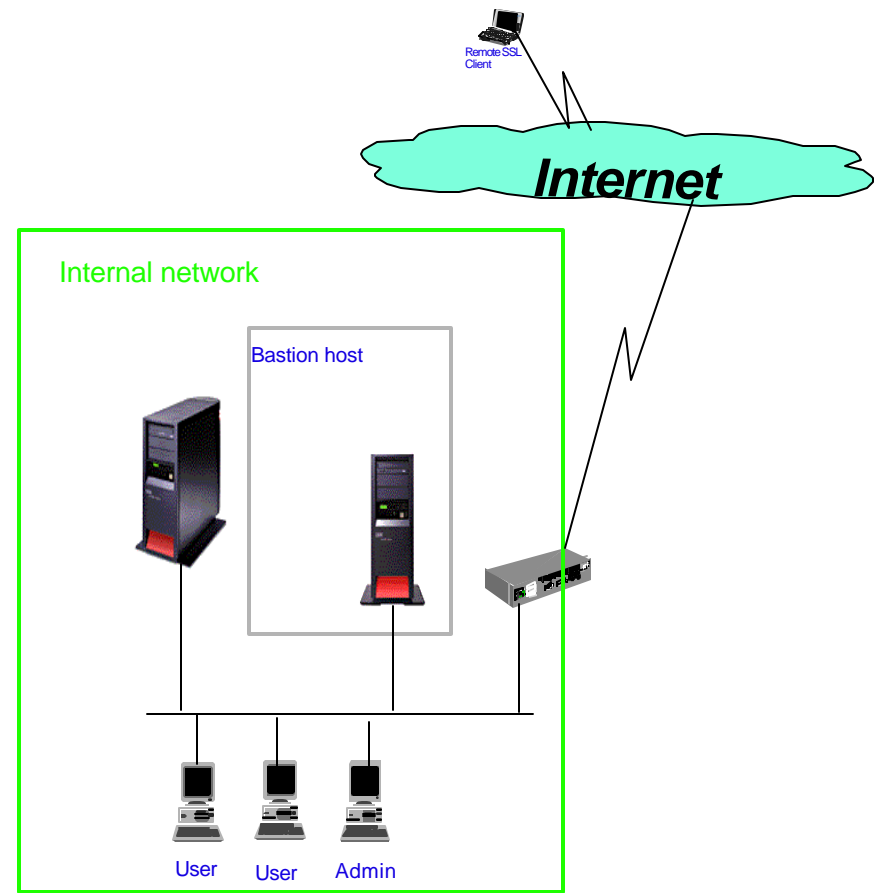
## ► Solution

- AT&T MultiProtocol Network leased line
- AT&T PC dialup - local rate call worldwide
- POP3 or Notes on PCs



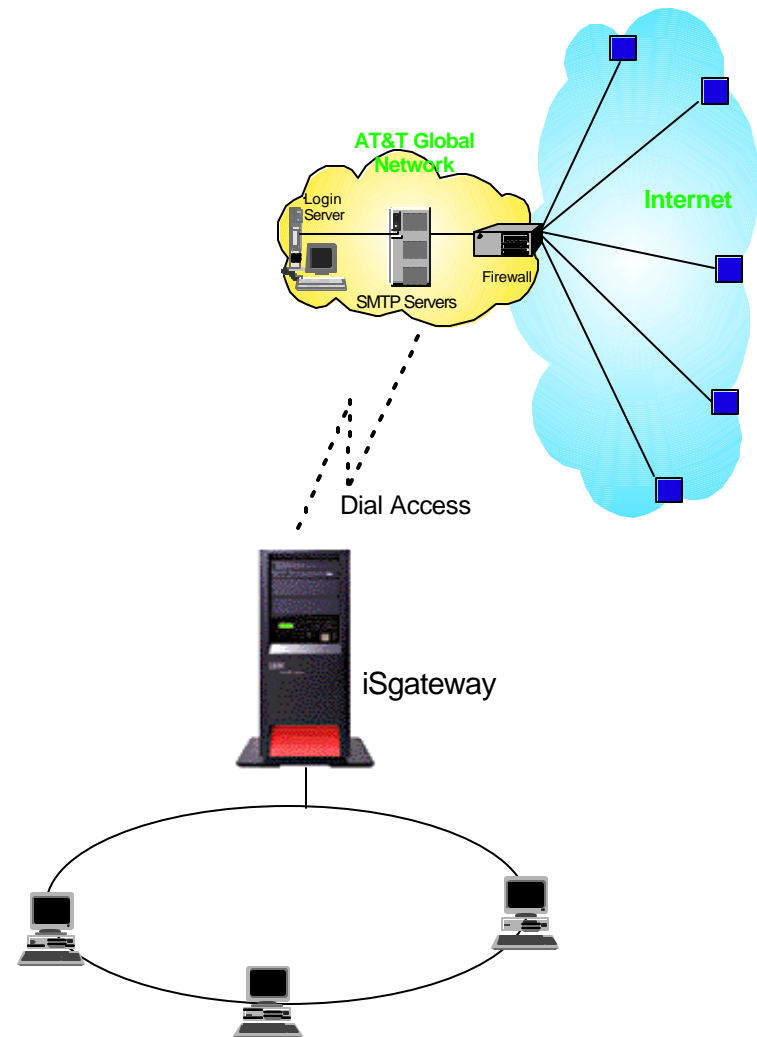
# Web Serving

- ▶ Requirements
  - Office LAN
  - iSeries server
  - Public access to server
  - user access to Web
- ▶ Solution
  - OpenNet Leased Line
  - IBM Web serving (HTTP, Domino, Websphere)
  - Firewall function (physical or software)



# Branch/Site Office Server

- ▶ Requirements
  - light use/temporary site
  - light Web browsing
  - file transfer to centre
- ▶ Solution
  - iSeries Domino server
  - clients include Notes, iNotes, POP3, Outlook
  - 'ECS' connection
  - Dial-on-demand
  - AT&T dialup, SMTP option & Messaging
  - AT&T as your mail domain
  - no firewall required





# Remote Hosted Services

---

- ▶ Hosting providers include IBM and AT&T
- ▶ Sample Hosted Applications
  - ◆ WAP-based email
    - read 'stubs' of large email
  - ◆ Have email read to you over phone
    - prompts to delete, etc.
  - ◆ CRM
    - popular hosted service
  - ◆ Sametime
  - ◆ IBM Courses-on-Request
    - Course delivered via digital satellite to storage device at location. Can be downloaded to a laptop for remote access.

---

# Heading for the Beach

---



# Story Theme

---

- ▶ Before you go
- ▶ Getting there
- ▶ Working there
- ▶ Playing there
- ▶ Calling home
- ▶ Getting back
- ▶ All using IBM & AT&T product examples

# Before you go

---

- ▶ Preparation
  - ◆ Airline timetables
    - Web download
    - PDA version
  - ◆ Hotels
    - Web booking
- ▶ On departure
  - ◆ Weather
  - ◆ Flight status and check-in (Web or phone)
- ▶ Getting there
  - ◆ work offline on planes
  - ◆ connect at airports
  - ◆ SatNav in rental car

# Working at the Beach - 'Dem'

---

- ▶ ThinkPad
- ▶ OS/400 file & print serving
- ▶ AT&T Dialer
- ▶ Lotus Notes replication
- ▶ BlueNotes
- ▶ IBM WorkPad
- ▶ EasySynch Pro

# Working at the Beach - Advanced

---

- ▶ Collect Voicemail
  - ◆ nobody need know where you are
- ▶ Instant messaging
  - ◆ chat when you like - the time difference makes them think you are working late
- ▶ Video conferencing
  - ◆ avoid 'Hawaiian' shirts

# Playing at the Beach

---

- ▶ And near the beach...
  - ◆ hotel, Tiki Bar, yacht, ...
  - ◆ DVD player on laptop
- ▶ Take photos and email them home
- ▶ Personal assistant support
  - ◆ is your 'niece' a Roaming Notes user? (so that she can share your laptop, of course)
- ▶ Suggestions?

# You made it!

---





---

# Implementation

---



# Have you done it yet?

---

- ▶ Almost half (47%) of organisations have implemented PDAs yet less than a quarter (24%) have deployed mobile data access mechanisms to date.
  - InformationAge, July 2002

# Implementation Issues

---

- ▶ Synchronisation
  - ◆ Ensuring accurate and timely data
- ▶ User Issues
  - ◆ Training. Changing passwords.
- ▶ Software Updates
  - ◆ via network
- ▶ Security
  - ◆ loss or theft of data
    - 250K pa handhels and mobiles left in US airports

# Soft Issues

---

- ▶ Employees organise their own working day
- ▶ You can locate all employees at all times
- ▶ Employees are 'always on'
  - ◆ can't say they didn't get the message
  - ◆ "By the time your PDA and phone shrink to being an earring you won't be switching it off at 5pm."
    - Bernt Ostergaard, Giga
- ▶ Employees all alone
  - ◆ IBMer's change from
    - "I've **B**een **M**oved" to
    - "I'm **B**y **M**yself"

# Implementation Tips

---

- ▶ Focus on B2E
- ▶ Technology is still evolving
  - ◆ one standard product set will not be possible
  - ◆ but standardise to start
- ▶ KISS
- ▶ Expect support to cost 1/4 to 1/3 of total cost

# Implementation Services

---

- ▶ IBM Global Services & partners
- ▶ Consulting and implementation for:
  - ◆ wireless e-mail
  - ◆ database access
  - ◆ Mobile Notes deployment
  - ◆ mobile office hosting
  - ◆ WorkPad enablement
  - ◆ Bluetooth & wireless LAN
  - ◆ RIM Blackberry integration

# Personal Experiences

---

- ▶ Take country power and phone adapters
- ▶ People can read laptop screens on planes
- ▶ Check the hotel phone tarriff
  - ◆ e.g. Marriott local call. \$1 in US. \$50/hr in UK.
- ▶ WorkPad gets out of synch
- ▶ You can chat and replicate over slow line
  - If you get a slow connection, dial again
- ▶ I save most Web work for later
  - downloads, printing, etc.
- ▶ Don't treat office staff as a secretaries
  - "I am running late. Can you call the customer?"
- ▶ Maybe stay on home time
  - Avoid jetlag. Enables chat. Works in Rochester, MN.

# Don't go too far...

---

- ▶ Harry Knowles, film commentator
  - ◆ Launched AintItCool.com when sick in bed
  - ◆ Stayed there when he recovered
  - ◆ Staff of 5 telecommuters
  - ◆ Logs 17 hours/day
    - "'The computer screen is so close it's the predominant image. The moment I wake up I roll over and start checking email.... There are days when I have food brought in and I don't leave here until 9 at night - and that's to go to a screening. It's a lot of work to be the slacker I am."
      - Wall Street Journal, 12/2/03



---

# Summary & Close

---



# Summary

---

- ▶ Huge business benefits
- ▶ The technology is ripe
- ▶ The costs are low
- ▶ Pick devices to match requirements
- ▶ You can start small and simple

# Sample Shopping List

---

- ▶ IBM iSeries plus...
- ▶ IBM ThinkPad
- ▶ IBM WorkPad
- ▶ Lotus Notes
- ▶ EasySynch Pro
- ▶ AT&T dialup
- ▶ 2nd home phone line
- ▶ Home printer

# Future: One Device?

---

- ▶ One device will replace:
  - ◆ desktop PC
  - ◆ notebook/laptop
  - ◆ palmtop
  - ◆ mobile (cell) phone
  - ◆ Minidisc player
  - ◆ digital recorder
  - ◆ MP3 player
  - ◆ Gameboy
  - ◆ portable DVD player
  - ◆ digital watch
- ▶ plus your non-electronic:
  - ◆ filofax
  - ◆ A-Z

# Future: One Device?, contd.

---

- ◆ All that is required is a PDA/phone with an expansion module for USB, monitor, etc.
- ◆ Handhelds will evolve to use the same keyboard, monitor, PCMCIA, drivers and printers as PCs
- ◆ You will work offline. Then, at the office, plug into a keyboard and monitor for access to WP and the Web, run productivity apps via Remote Desktop Protocol on NT or X-Windows on Linux.

# More Info: Documentation

---

- ◆ IBM Redbooks
  - AS/400 Internet Security Scenarios: A Practical Approach, SG24-5954
  - AS/400 Remote Access, SG24-6058
  - Lotus Mobile and Wireless Solutions, SG24-6525
  - Domino Designer 6: A Developer's Handbook, SG24-6854
  - Mobile Applications with IBM WebSphere Everyplace Access Design and Development, SG24-6259
  - End-to-End Management with Tivoli Managing PDAs, SG24-6001
  - IBM Replication Solutions for Pervasive Computing with DB2 Everyplace and DB2 Satellite Edition, SG24-6217
  - iSeries IP Networks: Dynamic!, SG24-6718

# More Info: Web Sites

---

- IBM Mobile/Pervasive Computing
  - [www.ibm.com/pvc](http://www.ibm.com/pvc)
  - [www.developer.ibm.com/pvc/index.html](http://www.developer.ibm.com/pvc/index.html)
  - [www-106.ibm.com/developerworks/wireless/](http://www-106.ibm.com/developerworks/wireless/)
- IBM iSeries
  - [www-1.ibm.com/servers/eserver/series/software/wireless/](http://www-1.ibm.com/servers/eserver/series/software/wireless/)
  - [www.iseries.ibm.com/developer/ebiz/handheld/index.html](http://www.iseries.ibm.com/developer/ebiz/handheld/index.html)
  - [www-1.ibm.com/servers/eserver/series/navigator/pervasive.htm](http://www-1.ibm.com/servers/eserver/series/navigator/pervasive.htm)
- IBM Lotus
  - [www.lotus.com/products/wireless.nsf](http://www.lotus.com/products/wireless.nsf)
- IBM Redbooks
  - [www.redbooks.ibm.com](http://www.redbooks.ibm.com)
- BlueNotes
  - [www.bluenotes.com](http://www.bluenotes.com)

# More Info: Web Sites, contd.

---

- AT&T
  - [www.att.com/globalnetwork](http://www.att.com/globalnetwork)
- Microsoft
  - [www.microsoft.com/mobile/developer](http://www.microsoft.com/mobile/developer)
- Palm OS Platform Technologies
  - [www.palmos.com/dev/tech](http://www.palmos.com/dev/tech)
- AvantGo
  - [www.avantgo.com](http://www.avantgo.com)
- WAP
  - [www.wapforum.org](http://www.wapforum.org)
  - [www.wap.net](http://www.wap.net)
- Wireless Developers Network
  - [www.wirelessdevnet.com](http://www.wirelessdevnet.com)



# Close

---

- ▶ Email us
  - ◆ [info@typex.com](mailto:info@typex.com)
- ▶ Feedback forms please, while you think about ...
- ▶ Questions

---

# Glossary

---



# Glossary

---

- 2G. 2nd Generation mobile phone telephony.
- 2 1/2 G. Interim generation. See GPRS.
- 3G. 3rd Generation mobile phone telephony. Broadband speeds.
- 802.11b. WLAN standard. 11Mbps.
- 802.11a/h/g/etc. 54Mbps. Successor to 11b
- Always-On. More or less permanently connected to the network.
- Bluetooth: Personal 'LAN'. Speed? Device to peripheral. 10-150m. Low power drain, hence PDAs and mobile phones. Minimal corporate acceptance.
- CLDC. Connected Limited Device Configuration
- ECS. Electronic Customer Support.
- EPOC. Operating system for Psion PDAs.
- GPRS. General Packet Radio Service. Replaces WAP. 56K. Always on.

# Glossary, contd.

---

- GSM. Global System for Mobile Communications. A digital cellular phone system based on TDMA2 that is widely deployed throughout the world.
- iSeries. The artist formerly known as AS/400
- ISP. Internet Service Provider
- Management Central: GUI system management function of iSeries Access
- m-commerce. Electronic commerce via mobile devices.
- MIDP. Mobile Information Device Profile
- POP. Point of Presence. An ISP's dial-in connection points..
- RAS. Remote Access Server
- TDMA. Time Division Multiple Access. Satellite and cellular phone technology. Interleaves multiple digital signals onto a single high-speed channel.
- Tier 0. An extension of the three-tier computing model, tier 0 refers to the next level down from PCs. Predominantly Web-enabled cell phones and PDAs.

# Glossary, contd.

---

- ToolboxME: IBM Toolbox for Java Micro Edition. The primary goal is to allow access to iSeries data from a tier 0 device.
- Universal Connection: ECS over TCP/IP
- WAP. Wireless Application/Access Protocol. Communications standard for digital mobile phones. WAP allows mobile phones to access the Internet and retrieve information on simplified display screens or through a voice interface. A mini-Web browser for mobile phones.
- WEP. Wireless Equivalency Protocol. Used for encryption.
- Wi-Fi. Another name for WLAN.
- WLAN. Wireless LAN.
- WTLS. Wireless Transport Layer Security. Encryption and authentication for WAP.

---

# Wireless Application Enablement (Basics)

---



# General Considerations

---

- ▶ Device Types
  - ◆ PC
  - ◆ PDA
  - ◆ Mobile phone
- ▶ Application Types
  - ◆ Live connection-based
  - ◆ Synchronisation-based
- ▶ Basic Roadmaps
  - ◆ Leave apps and data unchanged. Deploy your own gateways or translation products.
  - ◆ As above, but outsource gateways or translators.
  - ◆ Build and deploy device-specific applications and data

# Domino Everyplace Family

---

- ▶ Domino Everyplace Access Server (DEAS)
  - ◆ Real time access to Domino applications
    - Mail (Email, calcs, ToDo) and Directory are WAP-enabled
    - e-mail, calendars, to-do lists, directories from:
  - ◆ WAP-enabled devices
    - Digital cellular phones, PDAs, pagers
    - Mobile Notes for WAP is the client
- ▶ Domino EveryPlace Design tool
  - ◆ Mobile-enable other apps



# Domino Everyplace, contd.

---

- ▶ Domino Everyplace SMS (DESMS)
  - ◆ Notes users can:
    - Send messages directly to a mobile device from Notes mail or any Notes/Domino application
    - Send messages from a two-way device to Notes mail or a Notes application
    - Control the length and formatting of messages received on a mobile device
      - Receive data that exceeds the device limitations
      - Address and send messages to a mobile device's manager users who have multiple devices.
    - number (PIN) or the device owner's name.
    - Receive reports on the status of messages

# Domino Everyplace Enterprise

---

- ▶ Mobile Notes Application Sync and Development
- ▶ Disconnected access to apps and data on PDAs
- ▶ Three components
  - ◆ The Domino Everyplace Enterprise Mobile Application Designer
  - ◆ The Domino Everyplace Enterprise Server
  - ◆ The Mobile Notes client
- ▶ Supports Palm OS, Pocket PC and Symbian (EPOC)

# Trade and Service Marks

---

- iSeries, AS/400, IBM, OS/400, and Client Access are trademarks of the IBM Corporation in the United States or other countries or both.
- Microsoft, Windows 95, Windows 98, Windows NT are registered trademarks of Microsoft Corporation.
- Other company, product, and service names may be trademarks or service marks of others.