



IBM **@server**™ iSeries™

iSeries Access Family

What's New and Hot

Carole A Miner
Client Integration Technologies
Rochester, Mn
cminer@us.ibm.com

ITSO iSeries Technical Forum
SP23

IBM & IBM Business Partner Use Only Until Announced

© 2003 IBM Corporation

Abstract

This session will describe new naming, new products, and enhancements

- ▶ New naming structure of iSeries Access
- ▶ iSeries Access for Wireless
- ▶ iSeries ODBC driver for Linux

And will describe the new browser-based products for connecting to iSeries servers and modernizing those 5250 green screen applications.

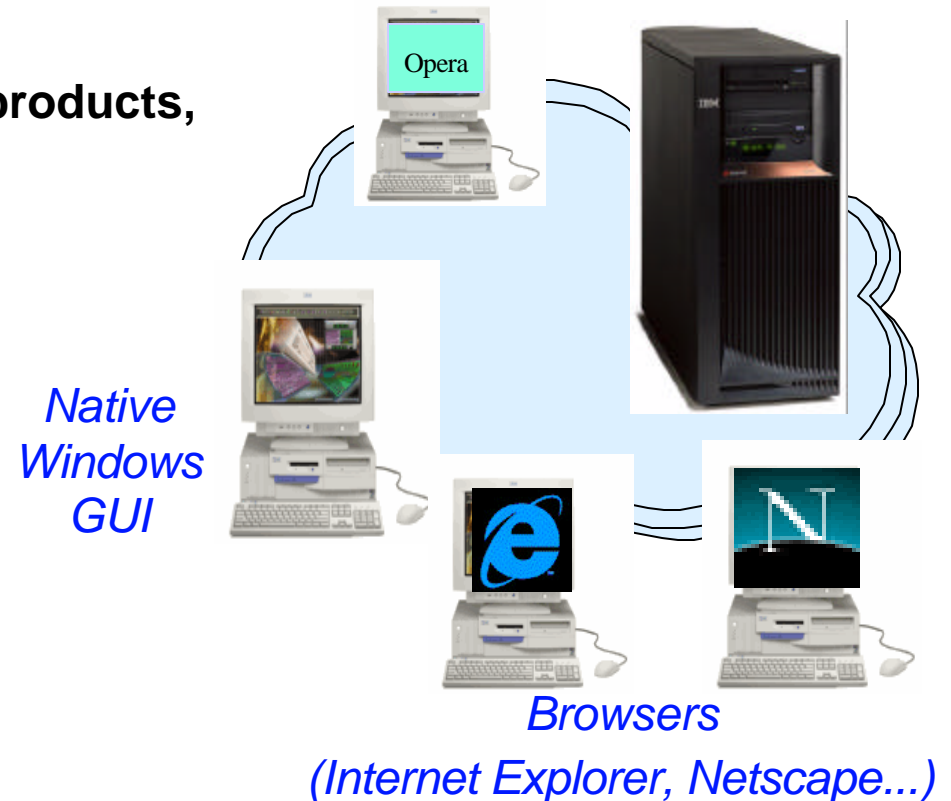
- ▶ iSeries Access for Web
- ▶ WebSphere Host Publisher

You will also learn what is new in the Windows client for end users:

- ▶ iSeries Access for Windows

For managing and administering iSeries servers

- ▶ iSeries Navigator



Wireless devices

- ▶ **New Naming Structure**
- ▶ **New Products**
- ▶ **Packaging**
- ▶ **Ordering**

New Names, New Products

Description	V5R1 Names	V5R2 Names	New Product Numbers
Family Name	iSeries Client Access Family	iSeries Access Family	5722-XW1
Windows Client	AS/400 Client Access Express for Windows	iSeries Access for Windows	5722-XE1
Face of OS/400	Operations Navigator	iSeries Navigator	packaged in 5722-XE1
Browser Access	iSeries Access for Web	iSeries Access for Web	5722-XH2
Application Tool	WebSphere Host Publisher V3.5	WebSphere Host Publisher V4.0	5724-B81
Handheld / Wireless	MC Pervasive iSeries Toolbox for Java	iSeries Access for Wireless iSeries Toolbox for Java ME	5722-XP1
Linux		iSeries ODBC driver for Linux	5722-LO1 web download



F03SP23iSeriesAccessFamilyV5R2.PRZ

V5R2 Packaging ... iSeries Access Products

Product Numbers	Product Names	On Stacked Media	Chargeable Product	Notes
5722-XW1	iSeries Access Family	Yes	Yes	User Based or Processor Based Purchase
5722-XH2	iSeries Access for Web	Yes	Yes	<ul style="list-style-type: none"> • 5722-XW1 required to use this product
5724-B81	WebSphere Host Publisher V4.0	No	Yes	<ul style="list-style-type: none"> • 5722-XW1 required to use this product
Will GA 6/30/2003	WebSphere Host Publisher V4.01 (supports WAS V5)	No	Yes	<ul style="list-style-type: none"> • CDs shipped with 5722-XW1
<i>New</i> ★ <i>GA 6/30/03</i>	HATS Limited Edition	No	Yes	<ul style="list-style-type: none"> • 5722-XW1 required to use this product • CD included with 5722-XW1
5722-XE1	iSeries Access for Windows	Yes	Parts are chargeable	<ul style="list-style-type: none"> • 5722-XW1 required to use PC5250 and Data Transfer
	iSeries Navigator	Yes	No	Packaged in 5722-XE1
5722-XP1	iSeries Access for Wireless	Yes	No	
5722-LO1	iSeries ODBC driver for Linux	No	No	Web download

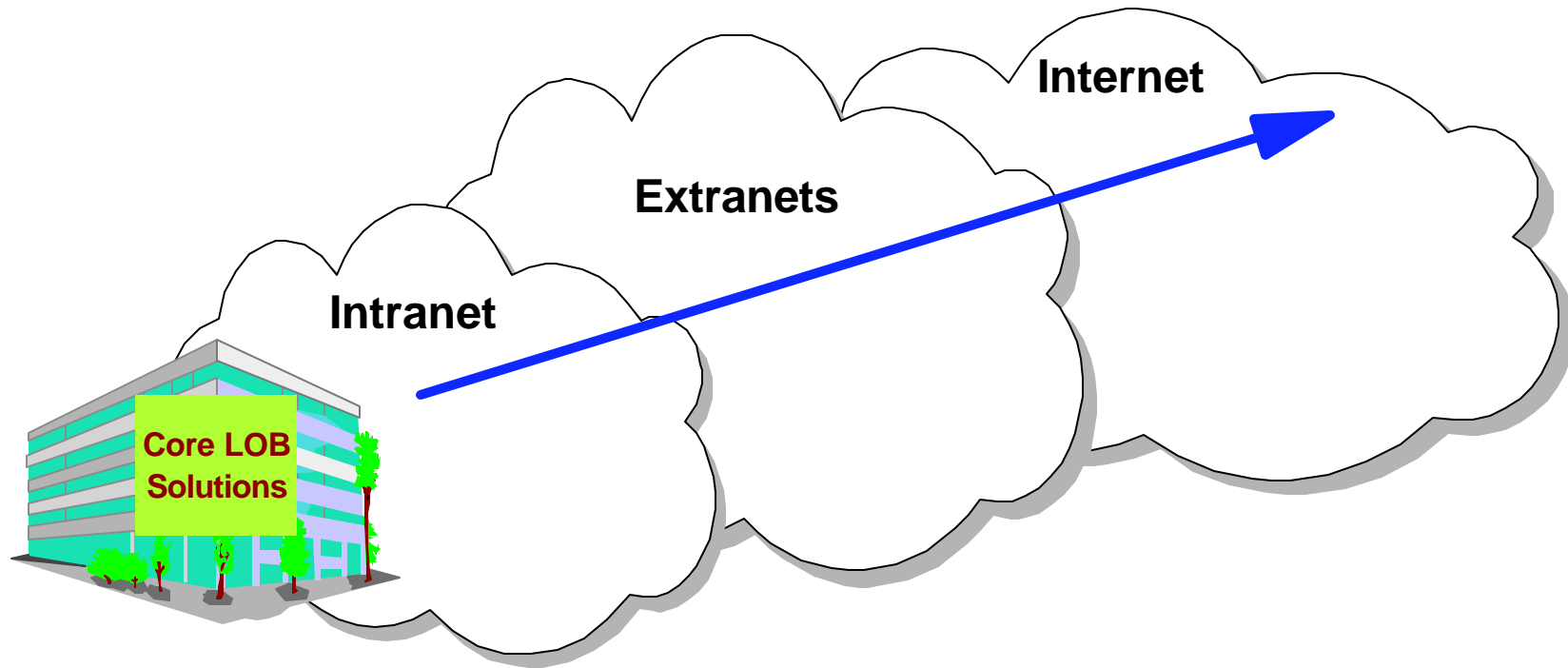
F03SP23iSeriesAccessFamilyV5R2.PRZ

iSeries Access Family - Packaging

 V5R2 5722-XW1 iSeries Access Family	 V5R1 5722-XW1 iSeries Client Access Family
<ul style="list-style-type: none"> ● 5722-XE1, V5R2 iSeries Access for Windows 	<ul style="list-style-type: none"> ● 5722-XE1, V5R1 AS/400 Client Access Express for Windows
<ul style="list-style-type: none"> ● 5722-XH2, V5R2 iSeries Access for Web 	<ul style="list-style-type: none"> ● 5722-XH1, V5R1 iSeries Access for Web
<ul style="list-style-type: none"> ● 5724-B81, V4.0 WebSphere Host Publisher 	<ul style="list-style-type: none"> ● 5648-E25, V3.5 WebSphere Host Publisher
<ul style="list-style-type: none"> ● Starting 6/30/2003 HATS Limited Edition 	
	<p>Customers with Software Subscription can get V5R2 clients by ordering no-charge Feature No. 2645 of Product No. 5722-XW1</p>
<p>After 6/30/2003, current V5R2 customers can get version of Host Publisher that runs on WAS V5 and HATS LE by ordering no-charge Feature No. 2646 of Product No. 5722-XW1</p>	<p>After 6/30/2003, current V5R1 customers can get version of Host Publisher that runs on WAS V5 and HATS LE by ordering no-charge Feature No. 2646 of Product No. 5722-XW1</p>

F03SP23iSeriesAccessFamilyV5R2.PRZ

Extend iSeries applications to the Web



Customers are looking for **no network desktop administration** and **easy access** to iSeries information:

- ▶ For a variety of desktop users
- ▶ For users with no iSeries skills

Using browsers and modernizing green screens are 'hot'!

Top executive focus topic: Get rid of those green screens!

Customers want to give their iSeries a new look and extend the reach of their information...

Use iSeries Access Family to ease customers into the Web and e-business

- ▶ Will help customers solve pressing business problems
- ▶ Quickly, practically, affordably - with flexibility for the future
- **iSeries Access for Web can be the instant 'window' to the iSeries**
 - ▶ It provides completely customizable front page capability and tremendous function and flexibility
- **Host Publisher can modernize those green screen host applications**
 - ▶ Its main strengths are that it doesn't require (or modify) source code and can be used to Web-enable only selected parts of applications

You have some of the best iSeries browser-based access and modernation tools to sell

Why sell iSeries Access for Web?

Start simple, grow fast...

- Any iSeries customer -- **with any hardware model** - can quickly get started working in a Web environment
 - ▶ If their system is not capable of running WAS, they can easily install the ASF Tomcat web application server. ASF Tomcat runs on hardware with 70 CPW and 256 MB memory
- Any iSeries customer -- **with little Web experience** - can easily get started working in a Web environment
 - ▶ iSeries Access for Web is simple to install and configure
 - ▶ There is no programming skills required to set it up
- Any iSeries customer -- **with no training or setup on users' desktops** - can extend the reach of their resources to end users
 - ▶ Use customize facility to set up view ('window') to iSeries and to control access to various iSeries resources
 - all built around OS/400 user profiles
 - ▶ Uses standard HTML, uses existing HTTP/HTTPS ports

iSeries Access for Web

browser-based access to iSeries resources

Included in the iSeries Access Family product

- ▶ 80% of iSeries customers purchase iSeries Access Family, thus have no-charge access to iSeries Access for the Web

Allows end-users to access all iSeries resources through a variety of browsers

- ▶ Internet Explorer, Opera, Netscape
- ▶ Any desktop operating system (Windows, **Linux**, Macintosh, UNIX....)

Runs with:

- ▶ WebSphere Application Server, or
- ▶ ASF Tomcat powered by Apache (part of no-charge HTTP Server, 5722-DG1)



*Use 'out of the box'
No programming required*



Notes: iSeries Access for Web

Recommend use of iSeries Access for Web, V5R2, 5722-XH2

For the following reasons:

- Fully translated, including DBCS NLVs
- Runs on WebSphere Application (Advanced and Single) Server 4.0 or can be used with IBM HTTP Server with the "Tomcat" plug-in from the Apache Software Foundation (ASF) (5722-DG1, included in OS/400)
- Runs on OS/400 V5R1 and V5R2
- Has extensive new functions (ie, high function 5250 interface, and other improvements across the product)
- Can be configured to run with more than one web application server and can run concurrently. Note: WAS Advanced 4.0, WAS Single Server 4.0, and ASF Tomcat can all be installed, configured, and running on an iSeries server concurrently
- Series Access for Web V5R1 (5722-XH1) and V5R2 (5722-XH2) can be installed and run on the same iSeries server concurrently, and V5R2 (5722-XH2) can be configured to run in more than one WebSphere administrative instance concurrently.

Only recommend use of iSeries Access for web, V5R1, 5722-XH2

If your customer is on OS/400 V4R5:

- Available 9/28/2001, English-only
- Runs on WebSphere Application Server 3.5
- Runs on OS/400 V4R5 and V5R1
- Can run one instance of iSeries Access for Web on WAS 3.5
- Does not have all the nice functionality (like a high function 5250 interface) as the V5R2 version has

iSeries Access for Web

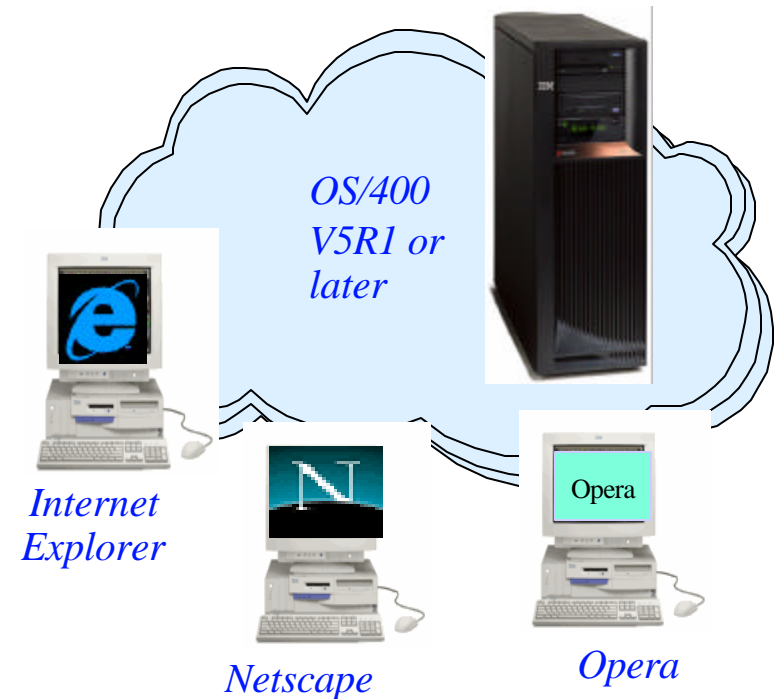
A full-function solution for any iSeries customer...

Provides access to iSeries through a browser

- ▶ Can run 5250 emulation, access database, integrated file system, printers, output queues
- ▶ Can run batch commands, send/receive messages, work with jobs, create and send .pdf and .xml

It has the following advantages:

- ▶ Is server based, implemented using Java (™) Servlet technology
- ▶ Is lightweight, requiring only a browser on the client, no applets installed on desktop
- ▶ No configuration required at desktop
- ▶ Uses industry standard protocols - HTTP, HTTPS, and HTML



Users can leverage business information, applications, and other resources of iSeries from any client desktop through a web browser

Notes: iSeries Access for Web for the Intranet/Internet user

iSeries Access for Web was introduced by IBM in September 2001. It provides a browser interface to iSeries resources such as: DB2 UDB, printer output, and OS/400 CL commands. iSeries Access for Web is implemented as a set of Java servlets which run on the iSeries server. Only a browser is required on the client.

If your iSeries server is part of your company's Intranet, you can use iSeries Access for Web to provide access to your resources for others within your company. If your iSeries server is part of the Internet, you can use iSeries Access for Web to provide access to your resources for your customers and suppliers. In this case, you also need to provide your customers and suppliers with a user profile to access your iSeries server.

You can build a quick and easy web site for your company with the customization support of iSeries Access for Web. No Java programming is required. You simply create HTML files and set configuration options. In this article, I demonstrate this capability by creating a web site to sell boats. This information is based on the functionality available with the V5R2 release of iSeries Access for Web.

Tasks for the experienced iSeries user...

Everything runs batch except 5250

My Personal Folder

Print

- ▶ Printer output
- ▶ Printers
- ▶ Internet Printers
- ▶ Printer shares
- ▶ Output Queues

Database

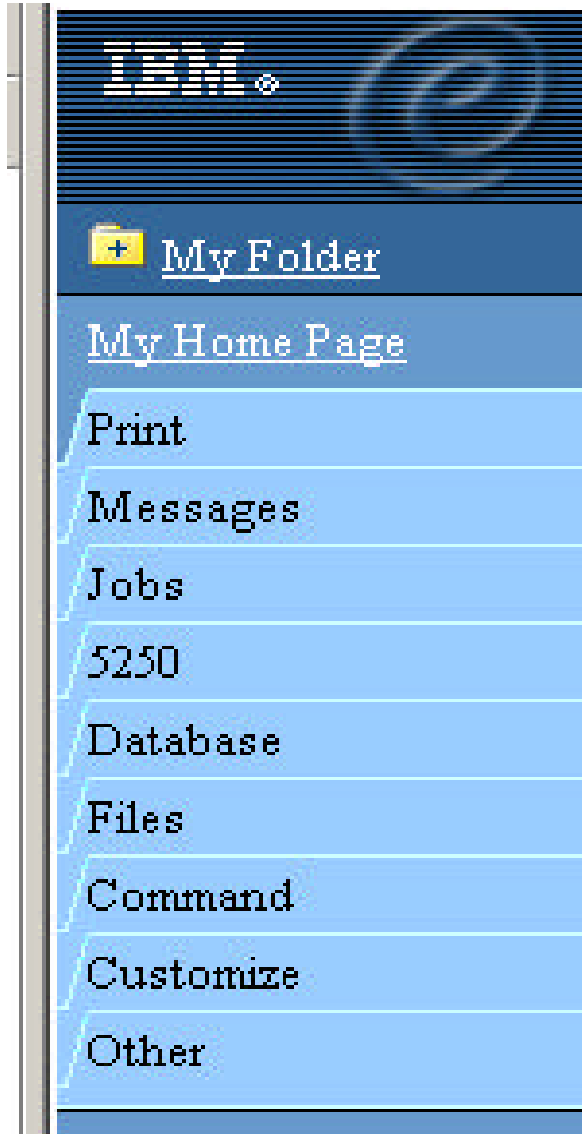
- ▶ Tables
- ▶ My Requests
- ▶ Run SQL
- ▶ Copy Data to Table
- ▶ Import Requests

5250

- ▶ Start 5250 Session

Commands

- ▶ Run CL commands



Files

- ▶ Browse Files (in IFS)
- ▶ File Shares (in NetServer)

Messages

- ▶ Display Messages
- ▶ Send Messages
- ▶ Operator Messages
- ▶ Message Queue

Jobs

- ▶ User Jobs
- ▶ Server Jobs

Customize

- ▶ Administrator controls access to functionsu by user or group of users:
 - Customize front page
 - Limit tasks that can be performed

Experienced User - points and clicks to information

The screenshot shows a web browser window with the URL <http://iSeriesd.dfw.ibm.com/webaccess/iWASpool>. The page title is "iSeries Access for Web" and the user is logged in as "wuser". The main content area is titled "Printer Output for wuser" and displays a table of print jobs. The table has columns for File Name, User Data, Creation Date/Time, Pages Per Copy, Copies, Status, Action, Preview, and User. The table contains 15 rows of data, all with a status of "Ready" and a user of "WUSER".

File Name	User Data	Creation Date/Time	Pages Per Copy	Copies	Status	Action	Preview	User
QPDSPLIB		10/9/02 10:09 AM	382	1	Ready	Hold Print Next Delete PDF	GIF TIFF PCL AFP Viewer	WUSER
QPDSPLIB		10/9/02 10:13 AM	1	1	Ready	Hold Print Next Delete PDF	GIF TIFF PCL AFP Viewer	WUSER
QPDSPLIB		10/9/02 10:14 AM	1	1	Ready	Hold Print Next Delete PDF	GIF TIFF PCL AFP Viewer	WUSER
QPRINT		8/13/02 5:19 PM	1	1	Ready	Hold Print Next Delete PDF	GIF TIFF PCL AFP Viewer	WUSER
QPRINT		10/6/02 12:10 PM	1	1	Ready	Hold Print Next Delete PDF	GIF TIFF PCL AFP Viewer	WUSER
QPDSPSTS		10/6/02 4:49 AM	1	1	Ready	Hold Print Next Delete PDF	GIF TIFF PCL AFP Viewer	WUSER
QPDSPLIB		10/9/02 10:11 AM	1	1	Ready	Hold Print Next Delete PDF	GIF TIFF PCL AFP Viewer	WUSER
QPRINT		10/12/02 9:36 PM	1	1	Ready	Hold Print Next Delete PDF	GIF TIFF PCL AFP Viewer	WUSER
QPDSPSTS		10/9/02 8:49 PM	1	1	Ready	Hold Print Next Delete PDF	GIF TIFF PCL AFP Viewer	WUSER
QPDCDEVA		11/8/02 6:53 AM	2	1	Ready	Hold Print Next Delete PDF	GIF TIFF PCL AFP Viewer	WUSER
QPRINT		11/3/02 6:47 PM	1	1	Ready	Hold Print Next Delete PDF	GIF TIFF PCL AFP Viewer	WUSER
QPDSPAJB		11/15/02 4:09 PM	7	1	Ready	Hold Print Next Delete PDF	GIF TIFF PCL AFP Viewer	WUSER
QPDSPAJB		11/15/02 4:09 PM	7	1	Ready	Hold Print Next Delete PDF	GIF TIFF PCL AFP Viewer	WUSER
QPRINT		11/19/02 3:01 PM	1	1	Ready	Hold Print Next Delete PDF	GIF TIFF PCL AFP Viewer	WUSER
QPDSPSTS		11/19/02 3:05 PM	1	1	Ready	Hold Print Next Delete PDF	GIF TIFF PCL AFP Viewer	WUSER

Tasks for the inexperienced iSeries user

Access for Web can be the window ('portal') to your iSeries resources

Customize your front page to work with other iSeries resources (no programming required)...

- Give users ability to work with spoolfile, database, IFS, etc without knowing anything about these actual functions

- Link to other programs, pages...

All with a click...

Notes: Example of a 'Customer View' of iSeries Access for Web

This shows a customer view of Access for Web customizable home page. This home page demonstrates one way to implement each of the services listed. Often, there are multiple ways to accomplish a single task using iSeries Access for Web. You can find documentation on the supported URL interfaces at: <http://www.ibm.com/servers/eserver/iseries/access/web/interface>.

View available boats - this uses Access for Web 'Database' functions to display the contents of a database table. The caption parameter identifies the customized table heading. The first link, View available boats, displays all available boats. The source for this link is:

```
<a href="/webaccess/iWADbView?table=BOATS.BOATS&caption=Available Boats">View available boats</a>
```

See boat details - this starts a traditional 5250 application. We use the iSeries Access for Web '5250 interface' to start a 5250 session with the iSeries server. The sessname parameter identifies a configured 5250 session containing connection, appearance, and behavior settings. The sessname parameter also causes a new session to start each time the link is chosen. If we omit the sessname parameter, this link reconnects to the most recently used 5250 session for the current user. If there are no active sessions for the current user, a new session is started. We use the initmac parameter to play a macro when the session is started. In this case, our macro signs onto the server and starts the 5250 application. If we don't want the signon information stored in the macro, we could have the end user sign onto the server and have the 5250 application start as the end user's initial program. To set the initial program, we use the change user profile command (CHGUSRPRF). In this case, we would also use the change system value command (CHGSYSVAL) to change the Display sign on information (QDSPSGNINF) system value to '0'. This prevents the signon status information from displaying before the initial program is started. The 5250 user interface is just one way to handle existing 5250 applications. Another option is to use a tool, such as IBM Host Publisher or IBM WebFacing, to transform the application into a modern web application. The source for this link is:

```
<a href="/webaccess/iWA5250?sessname=boat&initmac=startboat">See boat details</a>
```

Order a boat - provides a way for end users to enter information to place an order. We use iSeries Access for Web 'Database Table' insert to store the information. The source for this link is:

```
<a href="/webaccess/iWADbInsert?table=BOATS.ORDER">Order a boat</a>
```

This Week's Special - shows a video clip of the boat featured for the week. We store the video clip in the iSeries integrated file system and use the iSeries Access for Web 'File' function -- file download support -- to display it. We could also add links to other images stored in the integrated file system, such as pictures of the boat's interior. The source for this link is:

```
<a href="/webaccess/iWAFileDownload?filepath=/boats/carver.mpg">here</a>
```

Great Deals - displays information about all boats priced under \$75,000. We used iSeries Access for Web 'Database' function. In preparation for building this link, we used the SQL Wizard to build a query to retrieve all boats costing less than \$75,000 and order them by increasing price, then saved this request. Then when the user clicks on the link, this saved database request is run and returns the current results of the SQL query--which is a subset of the contents of a database table.

Site Support - this link provides a way for an end user to submit comments and questions. We used the iSeries Access for Web 'Message' support to send the messages. You could have someone monitoring these messages or it could have an application processing them. The source for this link is:

```
<a href="/webaccess/iWASendMessage">Send us a message</a>
```

Weather Conditions - this link does not use any iSeries Access for Web support. It is part of this example to demonstrate that home page content is not restricted to iSeries Access for Web functions.

© 2003 IBM Corporation

Run 5250 applications

Start simple, grow fast with iSeries Access for Web...

No programming required to make all your screens look like this

A sample RPG program..

- ▶ Your 5250 applications continue to function as they always have...
- ▶ Use built-in 'macro' support to skip second OS/400 sign-on screen and immediately bring up application
- ▶ Or modernize your applications with WebFacing, Host Publisher...and use Access for Web as your 'window'

F03SP23iSeriesAccessFamilyV5R2.PRZ

Notes: Example of a 'Customer View' (continued)

Work with invoices - this link displays current customer invoices. To implement this, we use iSeries Access for Web 'Printer output' support to display all spooled files in an output queue. We also use the customize support to limit the columns displayed and the actions available. The only available actions we use are TIFF and PDF. We use the TIFF action to view invoices. We use the PDF action to mail a PDF version of the invoice to the customer.

Check messages - this link displays questions and comments sent by customers. To implement this, we use the iSeries Access for Web 'Message' support to display the contents of a message queue.

Check system messages - this link displays iSeries system operator messages. To implement this, we use the iSeries Access for Web 'Message' support to display messages in the QSYSOPR message queue.

Administrator tasks - this link shows the list of commonly run tasks. To implement this, we use the iSeries Access for Web 'Command' support to display the list of saved commands. In this case, we saved a command to backup the contents of the BOATS library. We can use the prompt action to view or change the command parameters. In our case, we submit the command as a batch job since it could take a long time to complete.

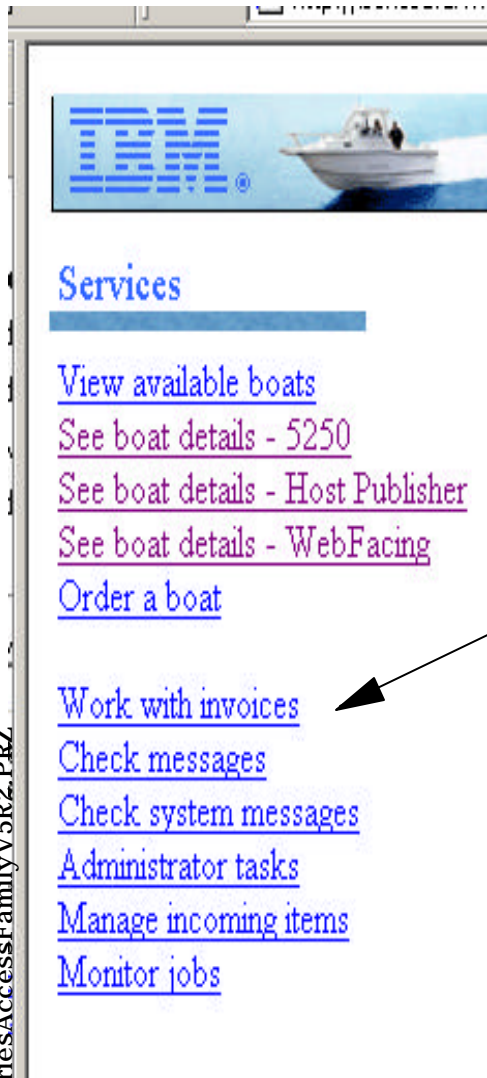
Manage incoming items - this link shows items needing the administrator's attention. For this link, we use the iSeries Access for Web 'My Folder' support to display items in the administrator's folder. In this case, we have the results of a database query for detecting low inventory.

Monitor jobs - this link displays the administrator's active jobs. For this link, we use the iSeries Access for Web 'Job' support to show active jobs for the current user. If we submitted the save library command as a batch job, we could use this link to monitor the status of the job. We could also use the customize function to switch the type of jobs in the list from active to another status, such as complete.

As you can see from this example, iSeries Access for Web provides a wide scope of functionality and it offers a great deal flexibility with the customization support built into the product. You can use this support to quickly and easily build a web site to fit your company's needs.

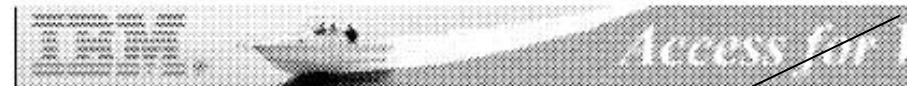
For more information on iSeries Access for Web, see the product web site at: <http://www.ibm.com/servers/eserver/series/access/web/>.

Can make it 'task' oriented...Not function oriented



Services

- [View available boats](#)
- [See boat details - 5250](#)
- [See boat details - Host Publisher](#)
- [See boat details - WebFacing](#)
- [Order a boat](#)
- [Work with invoices](#)
- [Check messages](#)
- [Check system messages](#)
- [Administrator tasks](#)
- [Manage incoming items](#)
- [Monitor jobs](#)



To Joe Customer
 1234 Beach Street
 Hometown, CA 12345

Date Thursday, June 13, 2002

Invoice No. 9876543

Payment Due Monday, July 15, 2002

Description	Part No.	Quant	Amount
Hunter 33.5	004356		0.00
Boat trailer	199234		0.00
Boat anchor	043993		0.00
			0.00
			00%
			9.00

Select 'work with invoices'

▶ iSeries Access for Web goes to the iSeries spoolfile, gets printer output, and converts it to PDF

Using iSeries Access for Web email capability, user could attach the PDF file and send to users without iSeries systems

Enhanced 5250 interface

No longer designated 'just for casual use...'

- 5250 Interface now provides:**
- ▶ Configurable Workstation (device) ID
 - ▶ Full use of keyboard (mouse not required to work with keyboard keys)
 - ▶ 132-column support
 - ▶ Macros, Keypads...
 - ▶ Works with WAS 4.0 and ASF Tomcat

Even your OS/400 screens look better...

F03SP23iSeriesAccessFamilyV5R2.PRZ

Customer Quote

At the end of July 2002 we have had the opportunity to install and evaluate a beta version of iSeries Access for Web V5R2.

This product has proved to be particularly useful and effective for our needs, we mainly make use of SQL database requests and 5250 display session.

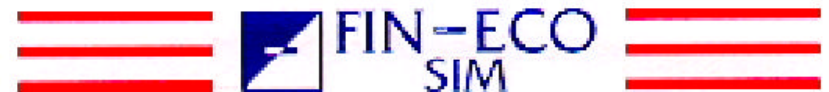
Exploiting templates and customization functions we have been able to implement a solid environment, customized for users and groups, to grant to each one the ability to access the appropriate DB2 UDB for iSeries data with the desired output formats (XLS, PDF, XML...)

Even managers, with no knowledge of the original applications, are able to get the most current data on the business flows with a couple of mouse clicks in a browser, getting the results in their e-mail if they decide so. These considerations are leading us to a very extensive usage of iSeries Access for Web V5R2 in all business areas.

We received the GA version of the product at the beginning of October, and the final version of this application will be made available to even more users in the next future - a good number of users are already working with the beta code.

Thanks to its ease of use and great customization capabilities, we are going to use iSeries Access for Web to grant access to two important finance application for more than 300 users - if the performance is what we will foresee, IWA will become part of our technological footprint!

Fin-Eco SIM (Società d'Intermediazione Mobiliare) - a major stock trader in Italy



WebSphere Host Publisher



*Modernize your iSeries
and zSeries host
applications and run
them from a browser*

A cross-server product

Why sell WebSphere Host Publisher?

Extend existing applications to the Web...

- **Can take an existing full-function, in-house application and present only selected paths to Web users**
- **Works on system screens**
 - ▶ **Can Web-enable an iSeries interactive command (such as query a database file)**
- **Can add database functions to existing host application**
 - ▶ **Can access information from any relational database**
- **Can combine portions of multiple applications into a single Web view**
 - ▶ **5250, 3270...**
- **Includes capabilities to control heavy Web use and large networks**
 - ▶ **Tools to enhance performance, fallover when Web server not available, manage multiple servers from single administrator console**
- **Cross platform development tool**
 - ▶ **Skills invested in Host Publisher can be used with zSeries and pSeries applications as well**

Don't
need
source
code

WebSphere Host Publisher V4.0

Included in the iSeries Access Family product

- ▶ 80% of iSeries customers purchase iSeries Access Family, thus have WebSphere Host Publisher

Streamline and enhance 5250 or mainframe applications (including **system screens, host, or database** applications)

- ▶ No change to back end applications -- don't even need source code
- ▶ Enables **multiple** sources of data to be combined into a single Web page

Works with Internet Explorer or Netscape

- ▶ Any desktop operating system (Windows, Linux, Macintosh, UNIX....)

Runs with:

- ▶ WebSphere Application Server

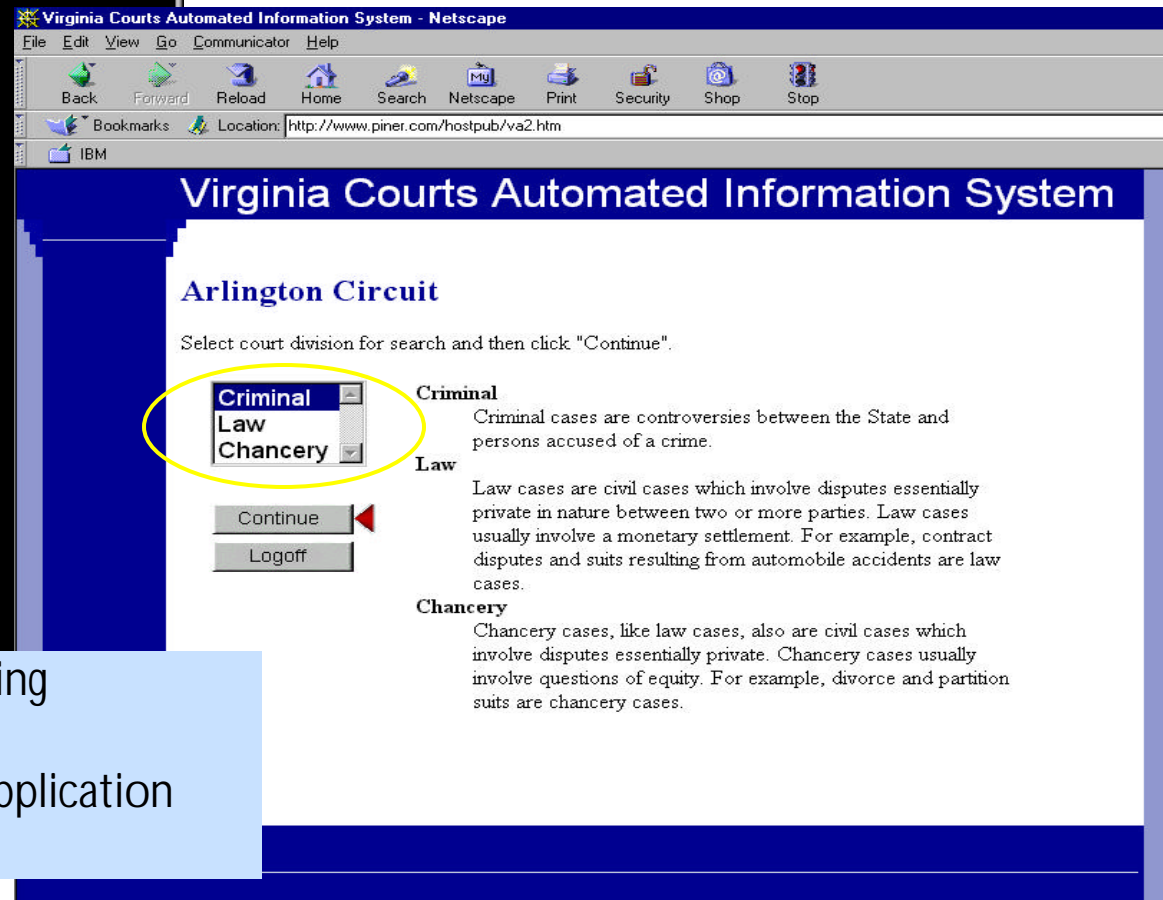
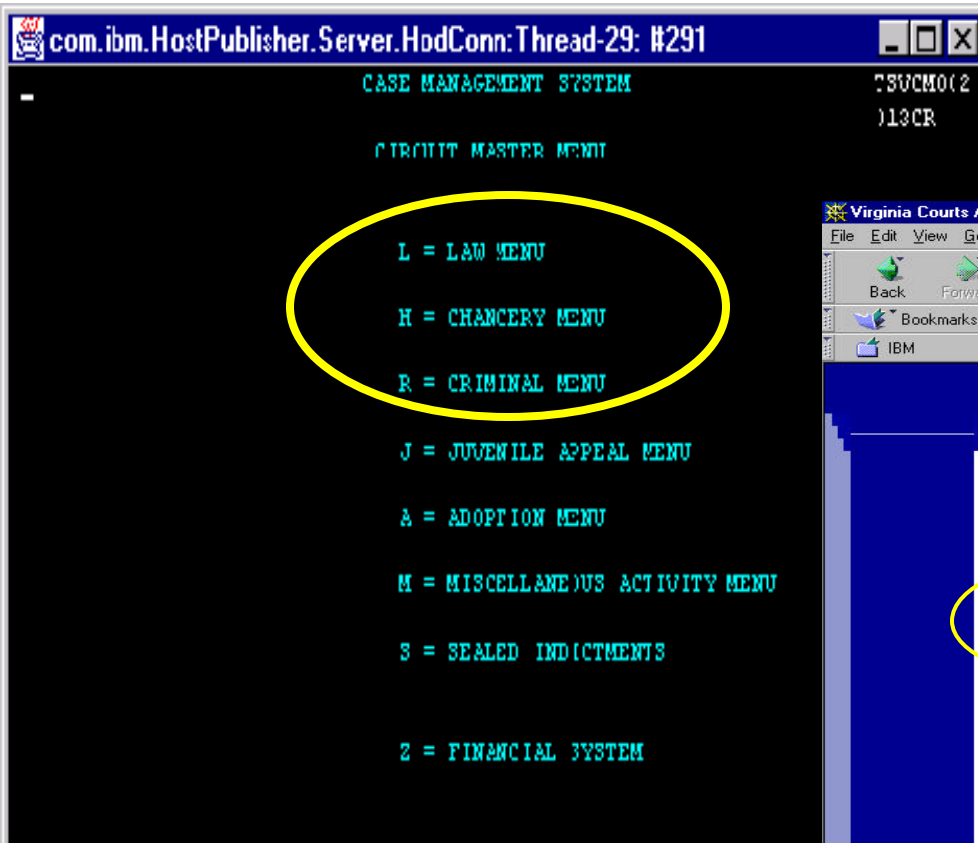


modernize those green screen applications...

WebSphere Host Publisher saves application rewrite

Designed to move your existing business applications to the Web

Your application doesn't change...just looks differently



- ▶ Can expose selected paths of an existing application to a Web view
- ▶ Can change order and placement of application presentation

Host Publisher - getting started

IBM WebSphere Host Publisher Application Development Workshop

- ▶ **Course Code: SW910**
- ▶ **For schedule information, call
1-800-IBM-TEACH (426-8322)**

'Building A Java Adapter Over a 5250 Application to enable B-B transactions' article

- ▶ **An example of taking an
interactive 5250 order entry
application running on an iSeries
machine, and making it
accessible via a web browser**

[http://www.iseries.ibm.com/developer/
java/topics/hostpubadapter.html](http://www.iseries.ibm.com/developer/java/topics/hostpubadapter.html)

WebSphere Host Publisher QuickStart Services



Acrobat Document

- ▶ **A comprehensive suite of services
to assist customers with the
installation and customization of
Host Publisher**

- Installation & Connectivity Module - 3 days
- Host Publisher Workshop Module - 5 days
- Host Publisher Remote Consulting Module - 40 hours

Programmer's Guide

- ▶ **On Host Publisher Studio CD**

PartnerWorld for Developers workshops

- ▶ **See Web page for next workshop**
[http://www-919.ibm.com/servers
/eserver/series/developer/](http://www-919.ibm.com/servers/eserver/series/developer/)

Reference Material (Redbooks, manuals, whitepapers, etc.)

Redbooks

- iSeries Access for Web V5R2 and WebSphere Host Publisher V4.0, SG24-6804-00 on the web at:
<http://publib-b.boulder.ibm.com/cgi-bin/searchsite.cgi?query=SG24-6804>
- A Comprehensive Guide to IBM WebSphere Host Publisher V3.5, SG24-6281
- New Advanced Functions in IBM WebSphere Host Publisher V2.2: Access Host Applications from Web Devices, SG24-5964-00
- New Advanced Functions in IBM WebSphere Host Publisher V2.2 - Access Host Applications from Web devices, SG24-5964-00
- Building Integration Objects With IBM SecureWay Host Publisher Version 2.1 , SG24-5385-00

White papers

- IBM WebSphere Host Publisher Version 4.0 Implementation Guide
ssRTE.exe for use with Lab 1 in Implementation Guide
[Executable - 139 KB]
- Setting up and Using the IBM® Express Logon Feature for WebSphere Host Publisher 3.5
- IBM WebSphere Host Publisher Version 3.5 Implementation Guide
- IBM WebSphere Host Publisher [PDF Version- 200KB]
- Using WebSphere Studio with Host Publisher
- Designing an Application Using IBM WebSphere Host Publisher
- Understanding Host Publisher Integration Object Chaining

Product documentation

- IBM Websphere Host Publisher V4.0 Readme
- IBM WebSphere Host Publisher V4.0 Administrator's and User's Guide
- IBM WebSphere Host Publisher V4.0 Programmer's Guide and Reference
- IBM WebSphere Host Publisher V4.0 Messages Reference
- IBM WebSphere Host Publisher V4.0 Planning and Installation Guide for IBM AIX, Sun Solaris, and Microsoft Windows
- WebSphere Host Publisher V3.5 Application Development: Building Integration Objects for use in Java Server Pages: Lab 1
- WebSphere Host Publisher V3.5 Application Development: Building a Integration Object Chaining Application- Lab 2
- WebSphere Host Publisher V3.5 Application Development: Using Conditional Macros, Error Logic and Global screens - Lab 3
- IBM Websphere Host Publisher V3.5 Readme
- IBM WebSphere Host Publisher V3.5 Administrator and User's Guide (GC31-8728-02)
- IBM WebSphere Host Publisher V3.5 Programmer's Guide and Reference
- IBM WebSphere Host Publisher V3.5 Planning and Installation Guide for Windows NT, Windows 2000, AIX, and Solaris (SC31-8730-03)
- IBM WebSphere Host Publisher V3.5 Planning and Installation Guide for iSeries (SC31-8734-03)

Key informational websites or links

- iSeries Access Family: www.ibm.com/eserver/iseries/access
- Host Publisher: www.ibm.com/software/webservers/hostpublisher/

Customer Reference Application - before using Host Publisher

```

Date: 11/05/99           Time: 12:09:21
Dup No. 02 000251303 SHINGLER RAY C & SUSAN L/H&W   RIDGEWOOD CREEK
Parcel                               UNIT 1 LOT 16
Stat A Cls 510   Mtg 3604 CHIMNEY HILL CT           DR467 P61 VLACD DITCH
By/Sl  4/16/96   355 VALPARAISO           IN46383
Drain 30   Consv 2   Bk/Pg 000 000 Inst #           Tx Sale N BANKRUPT
Property Address --> NO ADDRESS FOUND           Pre.Dupl. 278560
                                           New.Dupl. 0

```

	Land-Res	Impr-Res	Land N-R	Impr.N-R	Exempt	Net Value	C.of E.#
96	3430	20230	0	0	3000	20660	0
97	0	0	3430	20230	0	23660	0
98	0	0	3430	20230	0	23660	0
99	0	0	3430	20230	0	23660	0

```

Mtg   Y N N N Hmstd Y N N N Age           N N N N DisVet   N N N N Solar N N N N
Rehab N N N N WW1   N N N N Blnd/dsabl N N N N Tx Exmpt N N N N

```

	Tax Due	Tax Paid	Date	Penalty	Pen.Paid	Date	Date Appld
96 A	793.42	793.42	5/12/97	.00	.00	0/00/00	6/03 0/00
Y B	793.42	793.42	11/10/97	.00	.00	0/00/00	11/13 0/00
97 A	965.59	965.59	5/11/98	.00	.00	0/00/00	5/12 0/00
Y B	965.59	965.59	11/10/98	.00	.00	0/00/00	11/18 0/00
98 A	909.92	909.92	5/10/99	.00	.00	0/00/00	5/24 0/00
Y B	909.92	.00	0/00/00	.00	.00	0/00/00	0/00 0/00

```

ENTER DUP NO           F5-NAME F7-ADDR F9-NOTES F10-PADDR F11-BK/PG F12-RTRN

```

Porter County Indiana - Tax Details Screen

Customer Reference Application - after using Host Publisher

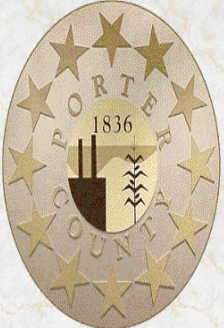
Select Type of Search to perform

Search by Name:

Search by Name

Search by Address:

Search by Street Name



Search by Dup. Number:

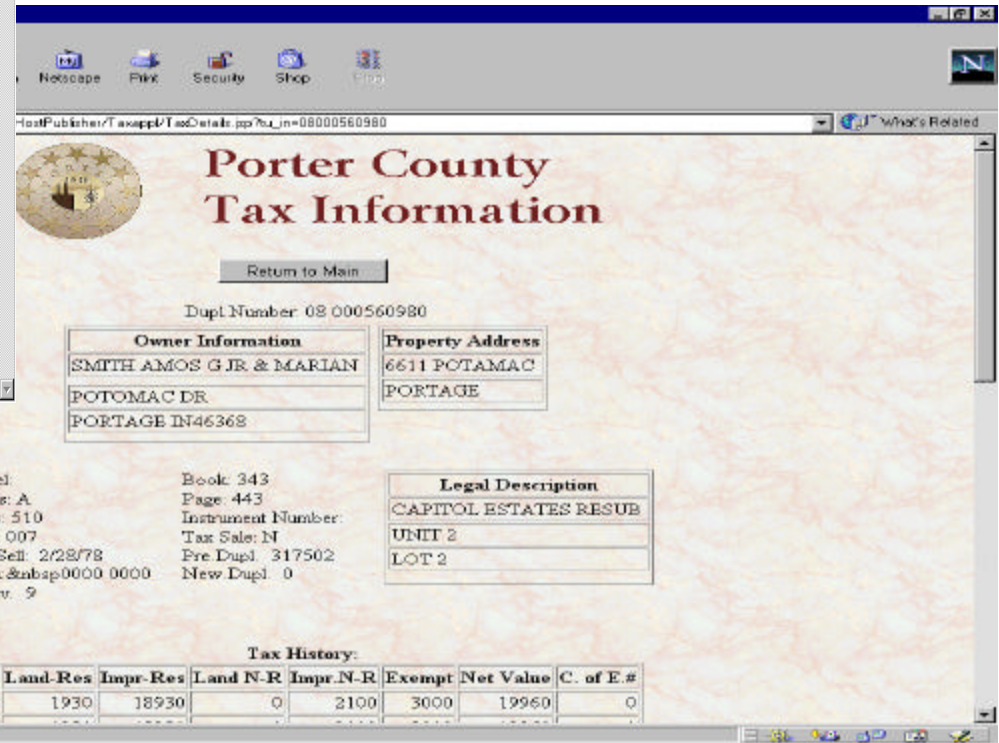
Search by Dup. No.

Search by Property Address:

Search by Street Name

Signoff

- Porter County**
- Tax Search Form
 - Tax Information Results



HostPublisher/Taxapp/TaxDetails.jsp?u_in=08000560980

Porter County Tax Information

Return to Main

Dupl. Number 08 000560980

Owner Information			Property Address	
SMITH AMOS G JR & MARIAN			6611 POTAMAC	
POTOMAC DR			PORTAGE	
PORTAGE IN46368				

Parcel:	Book: 343	
Status: A	Page: 443	
Class: 510	Instrument Number:	
Mtg: 007	Tax Sale: N	
Buy/Sell: 2/28/78	Pre Dupl: 317502	
Draw: 0000 0000	New Dupl: 0	
Conv: 9		

Legal Description						
CAPITOL ESTATES RESUB						
UNIT 2						
LOT 2						

Tax History:						
Land-Res	Impr-Res	Land N-R	Impr.N-R	Exempt	Net Value	C. of E.#
97	1930	18930	0	2100	3000	19960
						0

Customer Quote

"Porter County has experienced a strong demand to provide more convenient access to public records like tax and judicial data, and people expect the simplicity and familiarity of the web environment .

WebSphere Host Publisher provided a rapid conversion of our AS/400 property tax application to a browser interface and **allowed us to streamline the application by combining screens and functions.** The result has been a **significant reduction in retrieval errors, connectivity costs, and improved public satisfaction with our systems.**

We have plans in the near future to convert two additional green screen applications for web access with Host Publisher. "

Sharon Lippens, Director, Data Processing, Porter County, Indiana

Tell your customers to check out <http://www.piner.com> to see other applications that have been modernized using Host Publisher

Notes: Other Refacing Products

There are a number of partner products that provide capabilities similar to the IBM tools, such as:

Company	Product	Interactive	Requires Web Application Server	Runs in ASF Tomcat
Jacada	Interface Server	N	N	N
Seagull	LegaSuite	N	N	N
System Objects	JACi400	N	Y	Y
Linoma Software	Enjoy	N	Y	Y
Look Software	NewLook	Y	N	N
Advanced Business Link	GUIStyle	Y	N	N
Better Online Solutions	Jadvantage	Y	N	N
Farabi	Host Front			
	ResQNet			
SoftDesign	WebSydian			

Most of the partner tools are priced per developer with Enterprise licenses available. Some are invasive, like WebFacing, others are not.

There are other tools for building new applications (not refacing) that are more similar to WebSphere Development Studio, such as: Advanced BusinessLink Strategi, Net400 Freestyle, Computer Associates Advantage PLEX, Velocity LegacyWeb, ASNA Visual RPG, BCD ProGen WebSmart

There are several 4GLs that create browser deployed applications, such as: Lansa for the Web, mrc Productivity Suite, GeneXus, Computer Associates Advantage 2E, Magic/400, iBase Webtop, Neuvis NeuArchitect

Show these products to your customers...

You can demo iSeries Access for Web and WebSphere Host Publisher to your customers by:

- Access the following web site through your browser:
 - ▶ <http://iseriesd.dfw.ibm.com/webaccess/iWAHome> (case sensitive)
- Use the following User ID and password to sign into the EXPERIENCED USER page:
 - ▶ User ID of WUSER
 - ▶ Password of GUEST1 (a one, not an L)

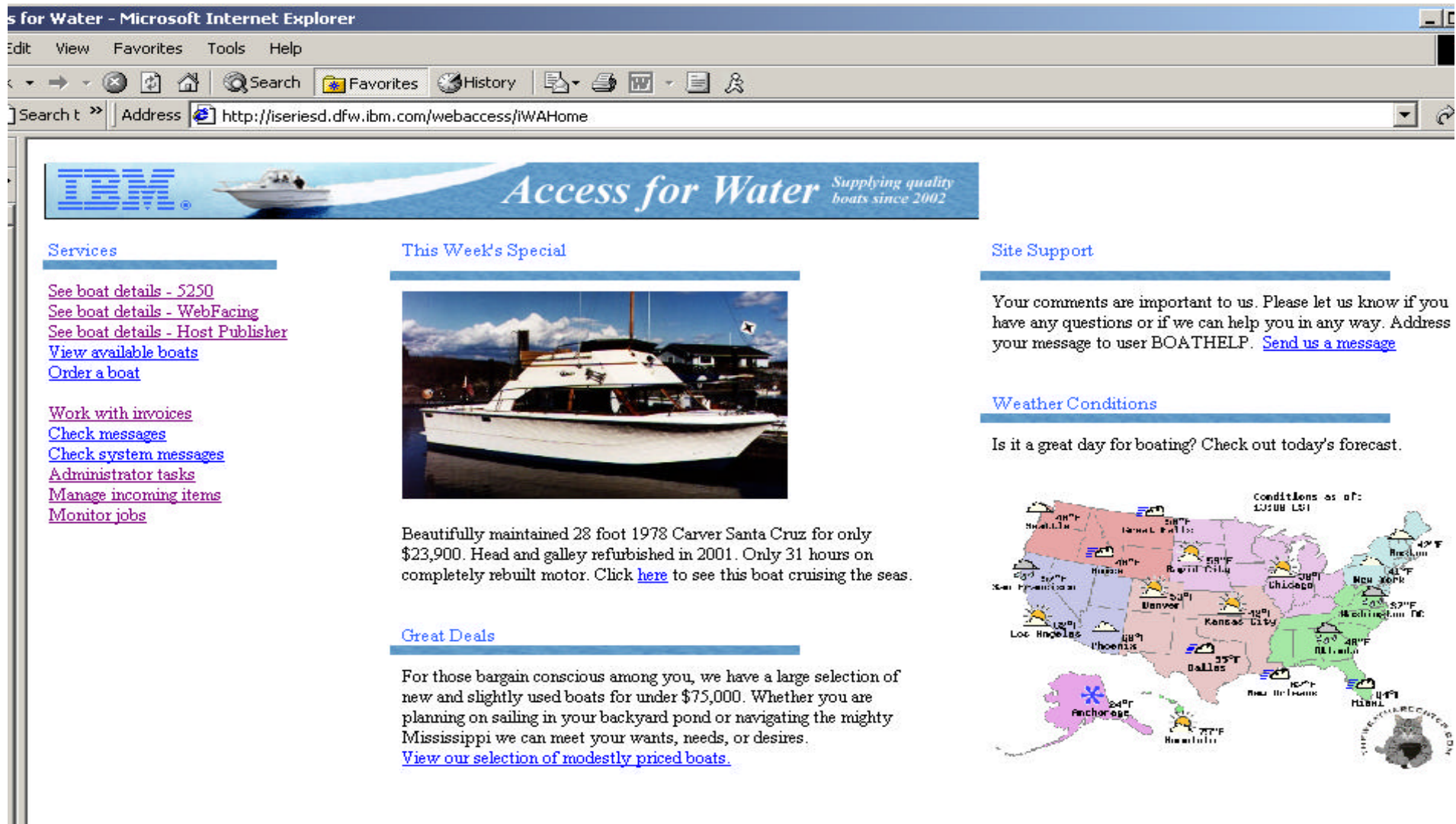
This shows the basic look of Access for Web as we ship it. You can try various functions -- including working with printer output and the options we provide. You can click on the 5250 tab, sign onto the iSeries, then start an RPG application calls BOATS and run it.

- Use the following User ID and password to sign into the Access for Water INEXPERIENCED USER page:
 - ▶ User ID of BOATADMIN
 - ▶ Password of ADMIN1BOAT (a one, not an L)

Then start up another browser session to the same url. This is an example of how a customer might design a web page for their use. You will see that an end user could start the same BOATS application by clicking on the 5250 session -- or if they had used WebFacing or Host Publisher they could run the application with them. So click on all 3 links and see the same application in different views. You will also see other links that would let a user work with spoolfile information, work with IFS, run database requests, etc..

<http://iseriesd.dfw.ibm.com/webaccess/iWAHome>


Userid = boatadmin, Password = admin1boat



Services

- [See boat details - 5250](#)
- [See boat details - WebFacing](#)
- [See boat details - Host Publisher](#)
- [View available boats](#)
- [Order a boat](#)
- [Work with invoices](#)
- [Check messages](#)
- [Check system messages](#)
- [Administrator tasks](#)
- [Manage incoming items](#)
- [Monitor jobs](#)

This Week's Special



Beautifully maintained 28 foot 1978 Carver Santa Cruz for only \$23,900. Head and galley refurbished in 2001. Only 31 hours on completely rebuilt motor. Click [here](#) to see this boat cruising the seas.

Great Deals

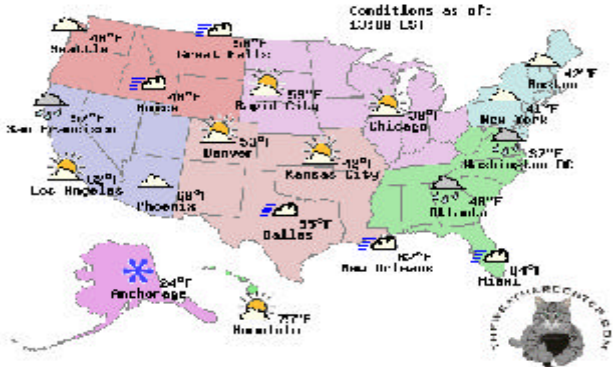
For those bargain conscious among you, we have a large selection of new and slightly used boats for under \$75,000. Whether you are planning on sailing in your backyard pond or navigating the mighty Mississippi we can meet your wants, needs, or desires. [View our selection of modestly priced boats.](#)

Site Support

Your comments are important to us. Please let us know if you have any questions or if we can help you in any way. Address your message to user BOATHELP. [Send us a message](#)

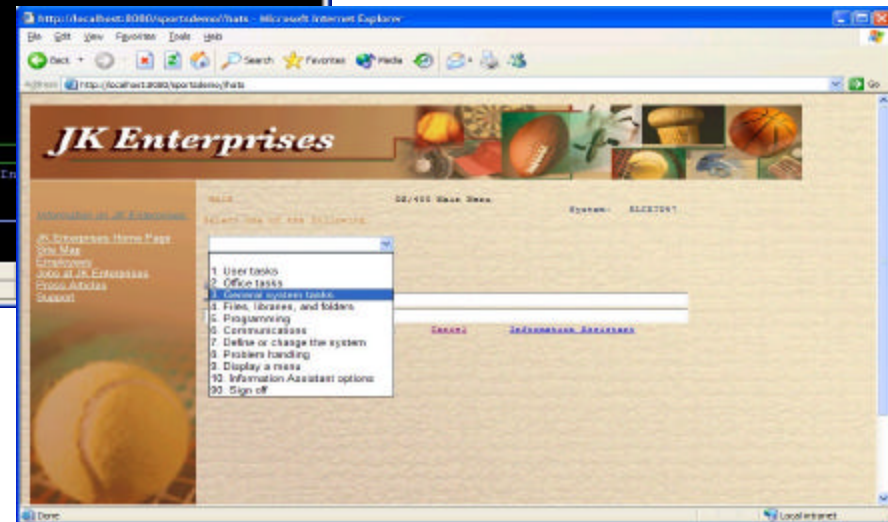
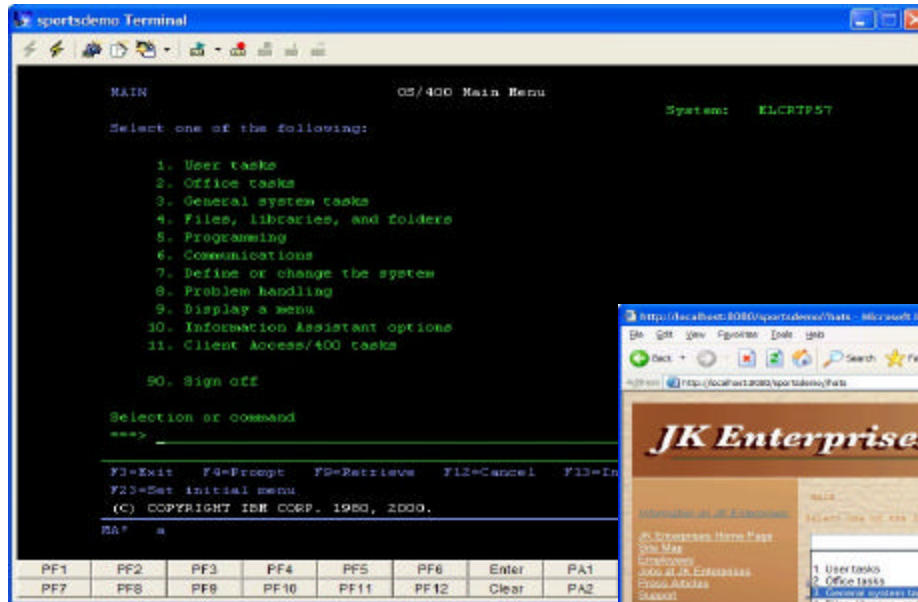
Weather Conditions

Is it a great day for boating? Check out today's forecast.



This is a Marketing machine in Dallas - DEMOnet

Host Access Transformation Server (HATS)



Host Access Transformation Server (HATS)

■ A Web-to-host HTML emulator...

- ▶ Zero-footprint, zero-download
- ▶ Only software needed on the client is a Web browser
- ▶ Provides support for 3270 and 5250 hosts

■ With a **rules-based transformation engine**...

- ▶ Default rules allow your host application to be on the Web within hours of loading the software
- ▶ No requirement for programming skills
- ▶ No need to customize every screen
- ▶ Add further customization at your own pace

■ Converts green screens to graphical user interfaces (GUIs)...

■ In real time

- ▶ **On-the-fly screen conversion** using the rules-based transformation engine
- ▶ HATS does not "break down" when changes are made to the host application



Included with Host Integration Solution bundle

HATS Limited Edition

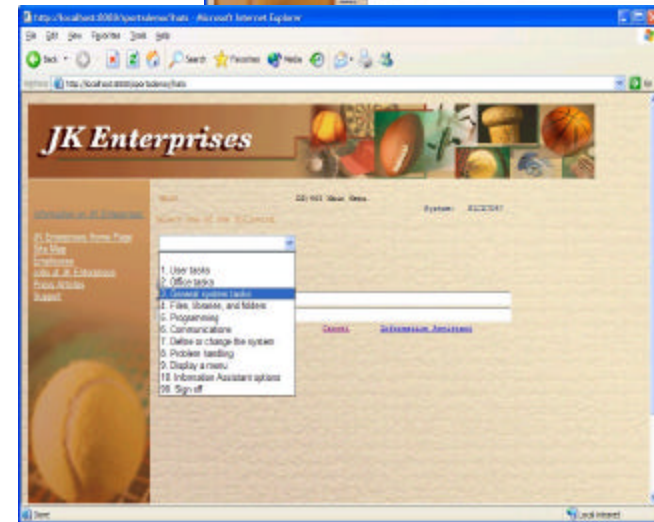
Capabilities

- ▶ Converts 5250 screens on the fly, in real time, to a point-and-click Web interface
- ▶ HTML templates included or can use customer provided HTML
- ▶ No programming required

Packaging

- ▶ HATS Limited Edition will be included with iSeries Access Family (5722-XW1) starting 6/30/2003
- ▶ Customers who have 5722-XW1 can order chargeable upgrade to full HATS offering

A quick and easy way to put iSeries applications on the Web



A new member of iSeries Access Family (5722-XW1)

Notes: HATS Limited Edition

Part of iSeries Access Family - 5722-XW1

Available 6/30/03

- Will automatically ship with new orders for 5722-XW1
- Existing 5722-XW1 customers can order no-charge Feature number to receive HATS Limited Edition in iSeries Access Family

Requires **WebSphere Application Server** V4.0 or V5.0

- Supports WAS V5 - Express for iSeries

Supports Internet Explorer and Netscape browsers

Provides host keyboard support

Supports Secure Sockets Layer (SSL) security

Converts 5250 screens to a point-&-click Web interface

- Delivers HTML to the desktop
- Only software needed on the client is a Web browser

Works on all 5250 screens

- Use customer-provided HTML or stock HTML templates included with product

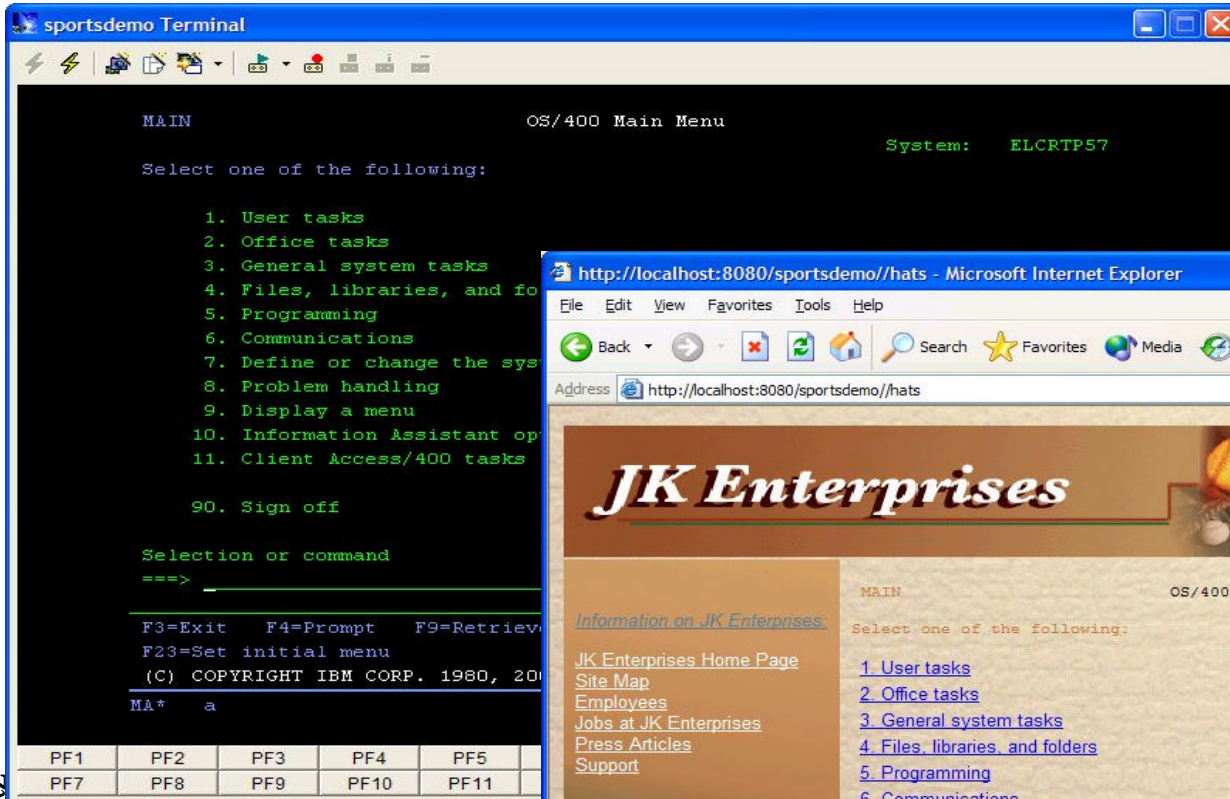
Screens are converted on the fly, in real time

- Selection lists can be converted to hot links, buttons, drop-down menus, or option lists (radio buttons)
- PF keys are can be converted to buttons or hot links

No programming necessary

- Doesn't break if changes are made to 5250 application
- No need to access source code

Example: HATS Limited Edition...real-time screen conversion



HATS Limited Edition on-the-fly conversion using customer-provided HTML (logo and graphics)



Traditional green screen



iSeries Access for Wireless **5722-XP1**

Application Flexibility, Innovative Technology

Integrated package of wireless functions and middleware

■ Management Central-Pervasive

- ▶ Functional enhancements for V5R2, including worldwide enablement

■ iSeries Toolbox for Java Micro Edition

- ▶ Provides access to iSeries through Java classes running on the devices, and ability to write Java Toolbox applications with the customized look for the devices

■ JDBC Micro Edition

- ▶ Access DB/2 on the iSeries from Java running on a wireless device, or write full-featured JDBC applications (transactions, stored procedures, DB triggers, etc.)



iSeries Access for Wireless is a new member of the iSeries Access Family

Delivered with OS/400 V5R2 at no additional cost

Delivers strong features to enhance development of wireless applications for use with the iSeries

Notes: iSeries Access for Wireless

Increase your business productivity without spending more time in the office or at the desk. Wireless access to administration functions and business solutions can make this happen. iSeries Access for Wireless expands the family to support administration of OS/400 and application development targeting wireless devices such as personal digital assistants (PDA) and Internet-enabled phones. This offering provides a new consistent branding and consolidation of development tools for creating wireless solutions.

The OS/400 administrator interface, previously called MC-Pervasive, has been enhanced and repackaged as iSeries Navigator. The IBM Toolbox for Java, used by developers to rapidly develop Java applications to access iSeries data and resources, has published a micro edition to extend its capability to wireless devices.

The IBM Toolbox for Java 2 Micro Edition, Java Data Base Connection (JDBC) driver to access DB2 UDB for iSeries. This enables a feature rich and secure database transaction. Through simplified yet secure access to information and function, it provides what you need to make your workforce truly mobile. IBM has a demo of the IBM Toolbox for Java running on a PDA -- From the road, you can sign in remotely through your PDA or other handheld device and issue a command or get information about your iSeries. Unlike Management Central Pervasive, which is servlet-based, the Toolbox code runs directly on any wireless device (e.g., cell phone, PDA), so you don't need to use a browser.

To get more information, go to iSeries Access Family web page at:

www.ibm.com/eserver/iseries/access

and following links to iSeries Access for Wireless

Management Central Pervasive - demo

a 'System Monitor' has just reached a threshold



pervasive_sys_mon.exe

Monitor 'CPU Average'

File Jobs View Graphs Help

Status: 1 threshold triggered on 1 of 3 systems Systems and groups: Sue's Group

CPU Utilization (Average)

(5:51:30, 100.00) on System3

CPU Utilization (Average) - (5:51:30, 100.00) on System3

App3
App1
App3
App2

App3 (41.07)

Property	Value
Job name	App1
User name	Smtowns
Job number	329674
Job type	B
Job subtype	

The screenshot displays a monitoring application window titled 'Monitor CPU Average'. It features a menu bar (File, Jobs, View, Graphs, Help) and a toolbar with various icons. The main area is divided into two panes. The left pane shows a line graph of 'CPU Utilization (Average)' over time (5:46 to 5:52) for three systems (System1, System2, System3). A red line indicates a threshold breach on System3 at 5:51:30, reaching 100.00% utilization. The right pane shows a 3D bar chart of CPU utilization for four applications (App1, App2, App3) on System3, with App3 being the highest at 41.07%. Below the bar chart is a table of properties for App3, including Job name (App1), User name (Smtowns), Job number (329674), Job type (B), and Job subtype.

F03SP23iSeriesAccessFamilyV5R2.PRZ



Linux

iSeries ODBC Driver for Linux

Extending the Reach to iSeries Data

Linux applications can access DB2 UDB for iSeries data

- ▶ By using the iSeries ODBC Driver for Linux, Product No. 5722-LO1

The ODBC driver can run on Linux in any of the following environments:

- Intel and PowerPC workstations or servers
- Linux running in an iSeries LPAR

Downloadable from the web

- ▶ <http://www.ibm.com/eserver/series/linux/odbc>
- ▶ Available since 3/28/2002



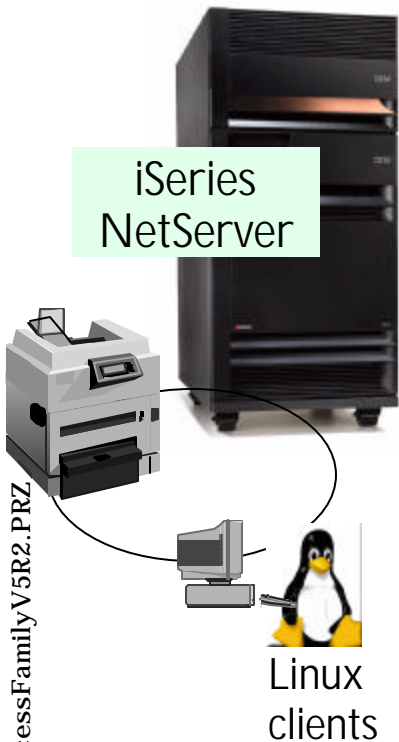
The high-function, best-performing iSeries ODBC driver (included in iSeries Access for Windows) was ported to run on Linux

iSeries NetServer: Supports Linux Clients

OS/400 Support for Windows Network Neighborhood (iSeries Netserver) is expanded to support **Linux** clients.

- ▶ iSeries NetServer support of Linux (clients) provides the same file and print sharing function as the existing iSeries NetServer.
- ▶ Linux clients (with kernel Version 2.4.3 and higher) with SAMBA (Version 2.0.7 and 2.2) can access the iSeries NetServer functions.
- ▶ This function was available for OS/400 as a V5R1 PTF in 4Q01 and built into V5R2

This gives the iSeries administrator the ability to easily control what files or printers a Linux user can get access to



For additional information, see:

<http://www.ibm.com/eserver/series/netserver>

Combine Access for Web - for a complete for Linux solution

My Personal Folder

Print

- ▶ Printer output
- ▶ Printers
- ▶ Internet Printers
- ▶ Printer shares
- ▶ Output Queues

Database

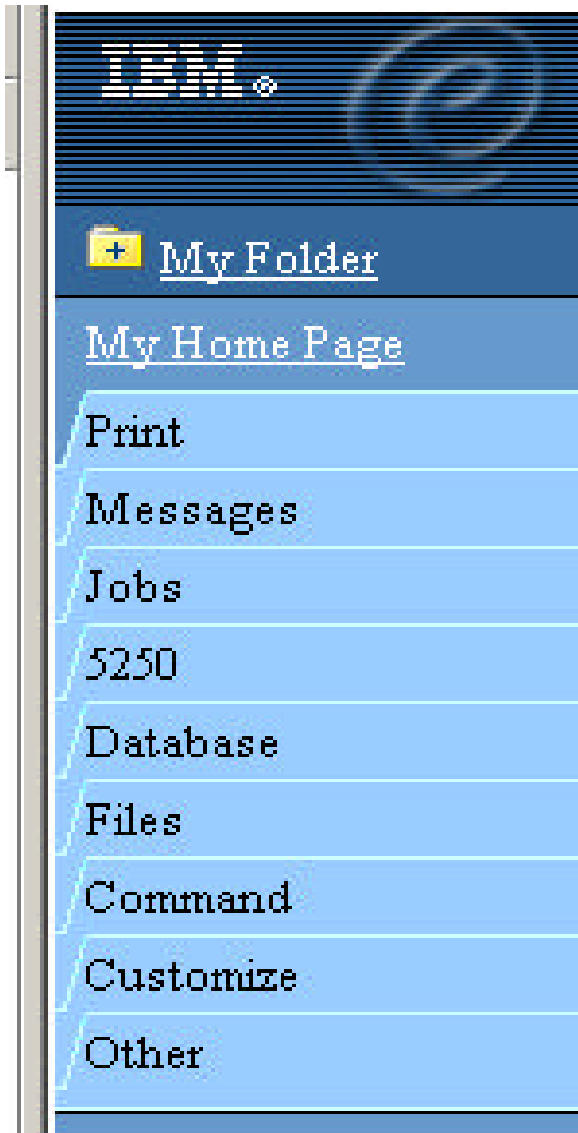
- ▶ Tables
- ▶ My Requests
- ▶ Run SQL
- ▶ Copy Data to Table
- ▶ Import Requests

5250

- ▶ Start 5250 Session

Commands

- ▶ Run CL commands



Files

- ▶ Browse Files (in IFS)
- ▶ File Shares (in NetServer)

Messages

- ▶ Display Messages
- ▶ Send Messages
- ▶ Operator Messages
- ▶ Message Queue

Jobs

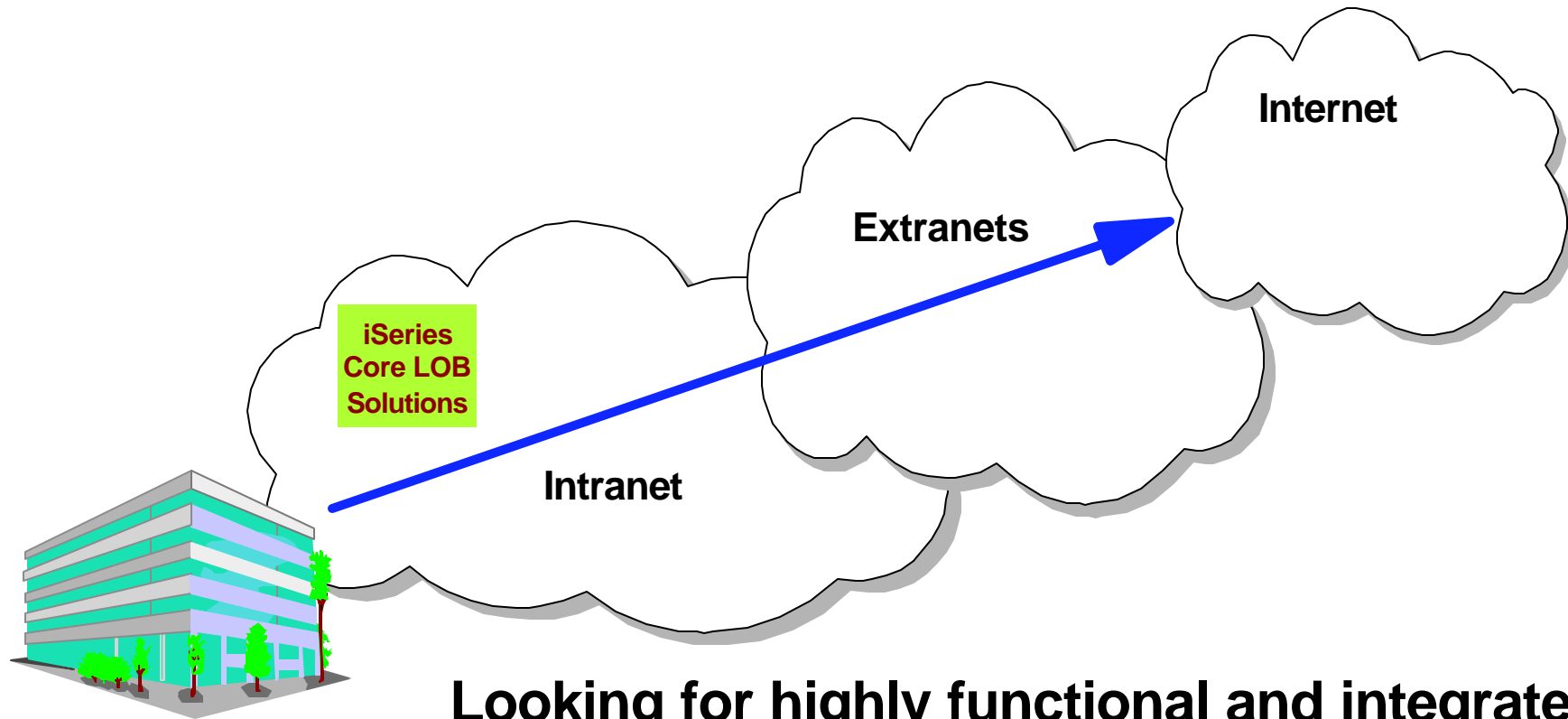
- ▶ User Jobs
- ▶ Server Jobs

Customize

- ▶ Administrator controls access to functions by user or group of users:
 - Customize front page
 - Limit tasks that can be performed



Core LOB Solutions



Looking for highly functional and integrated solution for:

- ▶ Windows servers and Windows desktop users
- ▶ iSeries administration and operation

Integrating native Windows with iSeries

Leveraging existing skills...

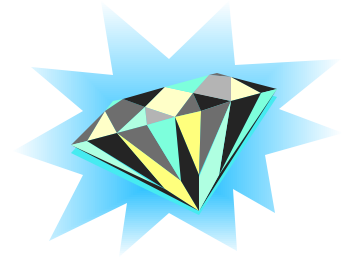
Customers looking for a single solution for working with all their iSeries resources

■ **A single offering designed for Windows users that provides:**

- ▶ High-function, easy-to-use 5250 emulator to work with iSeries applications
- ▶ A PC print server that OS/400 output can be sent to and run unattended
- ▶ Access to iSeries database and other resources from Windows applications
- ▶ Ability to use iSeries as file and print server
- ▶ Ability to administer users and manage iSeries resources and servers in the network
- ▶ Ability to monitor and manage users connected to iSeries servers

■ **It's all in iSeries Access for Windows**

- ▶ PC5250 emulation, Data Transfer, ODBC, etc for end users and Windows programmers
- ▶ iSeries Navigator to operate and administer iSeries systems and database
- ▶ Operations Console to work with OS/400 system console
- ▶ EZ-Setup to quickly and easily set up new iSeries servers



You have the most comprehensive iSeries native Windows connectivity solution in the market

iSeries Access for Windows (5722-XE1)

Native Windows access to iSeries resources

Included in the iSeries Access Family product

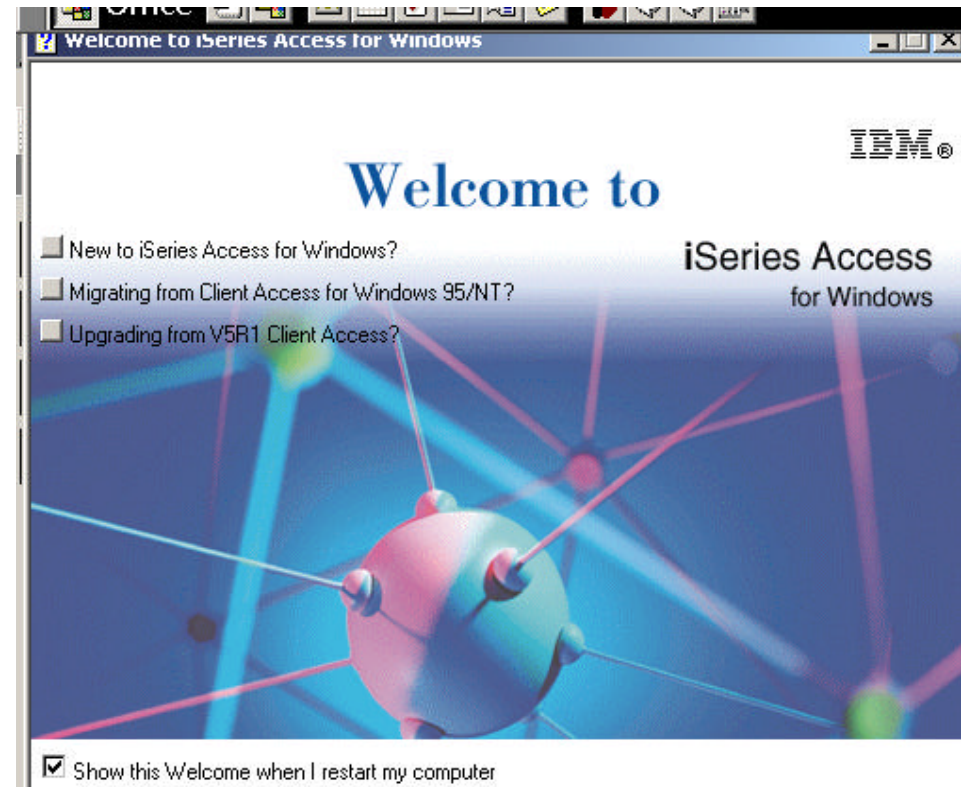
- ▶ 80% of iSeries customers purchase iSeries Access Family, and already are using iSeries Access for Windows

End-users can access all iSeries resources from their native Windows environment

- ▶ Windows 98, Me, NT 4.0, 2000, XP
- ▶ Even 64-bit Intel Itanium processors

No special web application server code needs to be set up on iSeries

- ▶ All code runs natively on the Windows desktop



The most comprehensive Windows-to-iSeries solution in the marketplace...

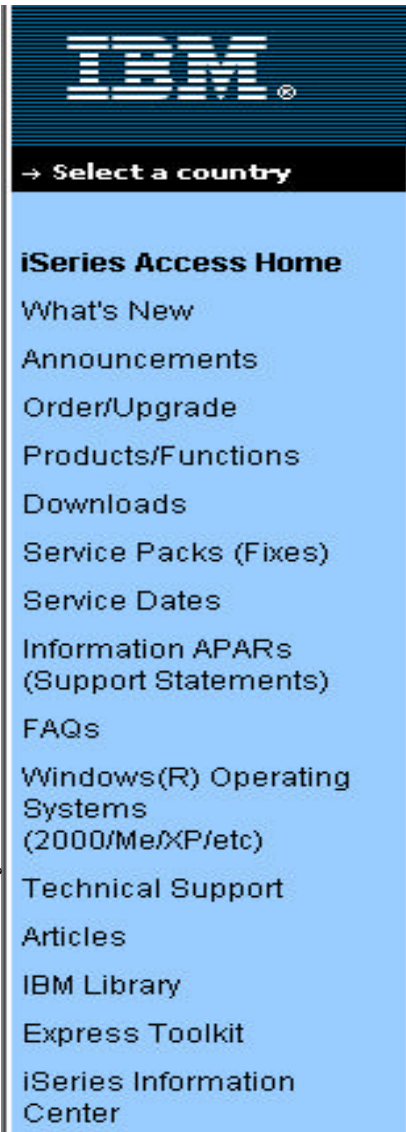
It just keeps getting better every release

- new in iSeries Access for Windows, V5R2 version

- **Latest version of Personal Communications 5250 emulator - V5.5**
 - ▶ PC5250 has acquired Windows 2000 certification
 - ▶ Improved NLV support
 - ▶ Ease of use enhancements
- **Database Access Enhancements**
 - ▶ New Spreadsheet formats
 - ▶ Support for uploading more than 256 columns of data to a database file
- **Support for Kerberos**
 - ▶ Emerging industry 'preferred way' to authenticate users
- **Support for 64-bit Intel Itanium processor**
 - ▶ ODBC, OLE DB
- **Support for Switchable IASPs**
- **Middleware enhancements for accessing DB2 UDB for iSeries**
 - ▶ ODBC Driver and OLE DB Provider
- **Install Enhancements**
 - ▶ Silent Install Enhancements
 - ▶ Enable customers to create a customized install image on CD
- **Migrate SSL users to 128-bit encryption program (5722-CE3)**

Use iSeries Access Family Web Page

<http://www.ibm.com/eserver/series/access>



- **Select Service Dates**
 - ▶ To find out which client version is currently supported and for how long
- **From Service Dates, select Connection Information**
 - ▶ To find out which client version is supported for connecting to each supported OS/400 release
- **Select Windows^(R) Operating Systems**
 - ▶ To find out which Windows O/Ss are supported by clients
- **Select Service Packs (Fixes)**
 - ▶ To find out what Service Packs are available, how to order them from IBM, and how to download them from web
- **Select IBM Library**
 - ▶ To see all publications available for iSeries Access
- **Secondary Languages**
 - ▶ To find out how to order extra CDs or order/install secondary languages, go to <http://www.ibm.com/eserver/series/access/languages.html>

iSeries Navigator

- *an innovative, visual, and highly-integrated advanced user interface*

Advanced UI techniques enhance iSeries ease of use...

- ▶ Takes advantage of users' existing GUI skills
- ▶ Reduces need to learn OS/400 command interface
- ▶ Helps keep IS shops running when new operations staff need to be hired



packaged in iSeries Access for Windows

- ★ **Simple to use for iSeries customer who has a *small IT staff* and only one or two servers to manage**
- ★ **Ideal for iSeries customers which *large networks***
- ★ **A 'must' for iSeries *database administrators***

iSeries Navigator meets many needs

- *its GUI capabilities make iSeries management a leader in the industry*

■ Administrator

- ▶ Manage OS/400 users and groups across the network
- ▶ Integrated xSeries (Netfinity) Server - Manage Windows server users and groups, disk storage
- ▶ Create LPs and fixes, distribute and install

■ Operator

- ▶ DASD Management - Balancing, compression, manage ASPs, manage disk units
- ▶ Work Management - Active jobs, job queues, memory pools, subsystems
- ▶ GUI CL command prompter

■ Database Administrator/Programmer

- ▶ Database Navigator - pictorial representation of database objects and their relationships
- ▶ Generate SQL - reconstruct SQL statements used to create existing database objects (sometimes referred to as reverse engineering)
- ▶ SQL Visual Explain - for fine-tuning SQL statements



iSeries value proposition has always been ease of use, low cost of ownership

iSeries Navigator enhances OS/400 V5R2...

- Making it even easier to work with iSeries resources

■ What's New?

- ▶ **Monitors for B2B Activity**
- ▶ **Stand-alone Tape Devices - vary on/off, properties, format, display, print, etc**
- ▶ **Users can create and manage their own servers via a wizard**
- ▶ **Wizards to create IP Version 6 (IPv6) configuration, interfaces and routes**

■ What's Enhanced?

- ▶ **Database Navigator supports Multiple Databases and Transactions**
- ▶ **Disk Management adds support for Parity Sets, Disk Pools, and new Taskpad items**
- ▶ **Integrated File System (IFS) more integrated with Disk Pools and other usability enhancements**

■ What's Enhanced?

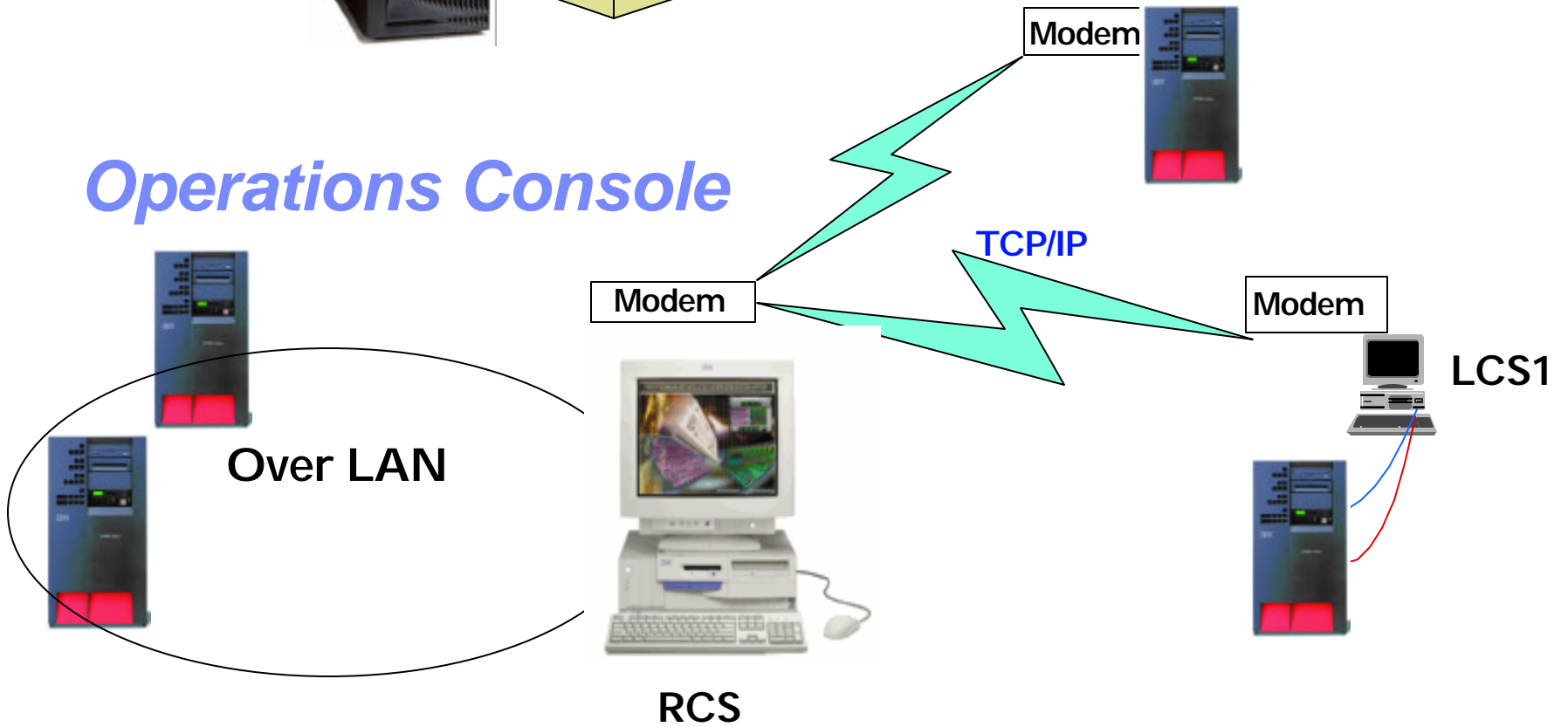
- ▶ **LPAR - can create partitions for guest operating systems such as Linux**
- ▶ **Windows Administration**
 - Run a windows command, service related options (such as, install latest version and service pack), create new open source disk file system (used for Linux in a partition)
- ▶ **Work Management now includes System Status**
- ▶ **Software Management enhances Package/Product Definitions**
- ▶ **Clusters - supports up to 4 nodes, can change, remove, add disk poolsgroup**
- ▶ **Quality of Service (QoS) adds LDAP server support**
- ▶ **Packet Rules and VPN can be viewed, edited and disable with a text editor**



EZ-Setup



Operations Console




Packaged with iSeries Access for Windows (5722-XE1)

Operations Console and EZ-Setup

- ▶ Better integration between EZ-Setup and Op Console
- ▶ EZ-Setup enhanced to be used with LAN Console
- ▶ Op Console wizards usability improved
- ▶ Sharing of wizards

EZ-Setup interview - System console connection



What type of system console connection will you be using with your iSeries server?

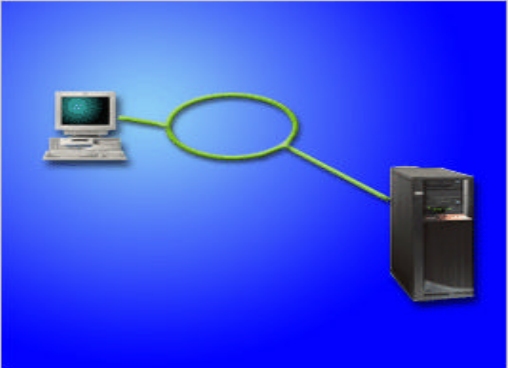
- Operations Console: local console directly cabled to server**
This option requires that the console PC be connected to the iSeries server with the Operations Console cable.
- Operations Console: local console on the network (LAN)**
This option requires an Ethernet or token ring connection to the iSeries server.
- Twinaxial workstation**
This option requires a workstation with a twinaxial cable.

Configure iSeries Operations Console - Select Configuration

Choose the configuration that best meets your console needs. Click through the choices for more details about each.

Configurations

- Local console directly attached to the server
- Local console directly attached with remote access allowed
- Local console on a network (LAN)**
- Local console through dial-up support
- Remote console through dial-up support



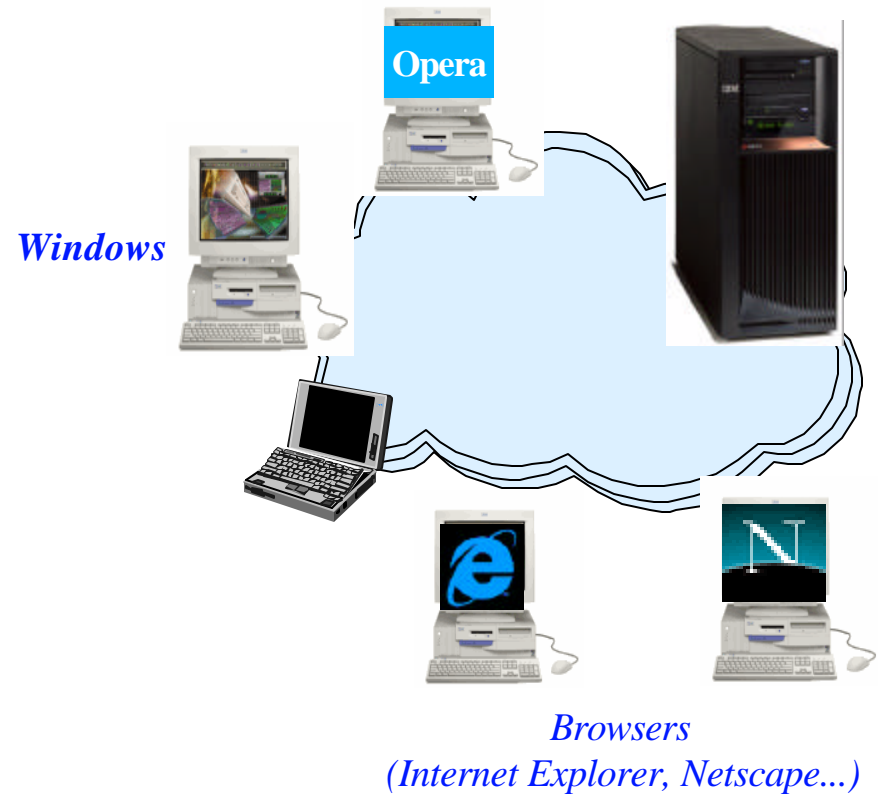
One or more PCs on a network can act, one at a time, as a console for the iSeries server or a partition.

F03SP23iSeriesAccessFamilyV5R2.PRZ

Sell iSeries through its GUI...

The way to sell iSeries is through the GUI..

- ▶ These desktop solutions not only 'look great'...
- ▶ But contain leading technology and exceptional productivity benefits...
- ▶ Offer customers an easy way to expand their business to the Web



They are sure to help you close iSeries deals...



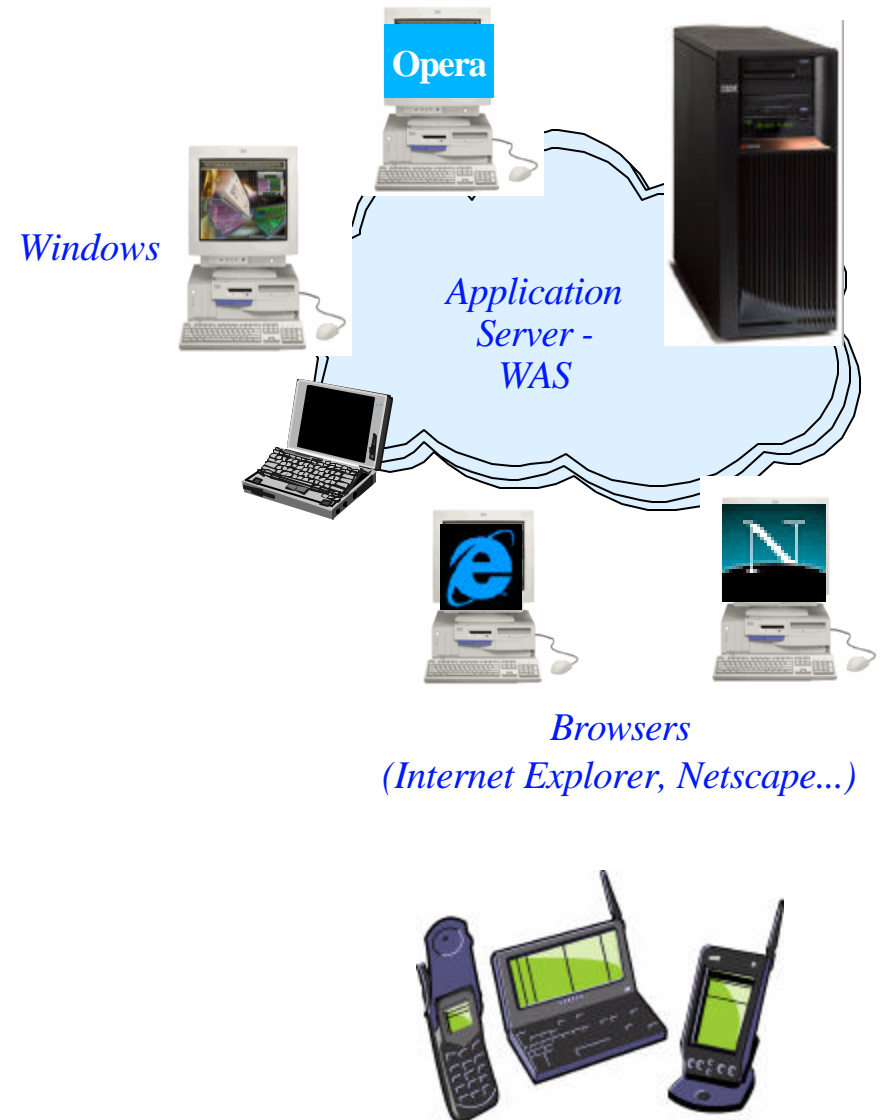
Know the products...

The products highlighted in this presentation can all be positioned as **complementary** to each other

Each product brings great strengths in a particular area...

Customers need assistance in determining what product is right for the task at hand...

- ▶ One may be right for this task...
- ▶ But the next project might well be better suited for one of the other products...
- ▶ Another project might call for a combination of these tools

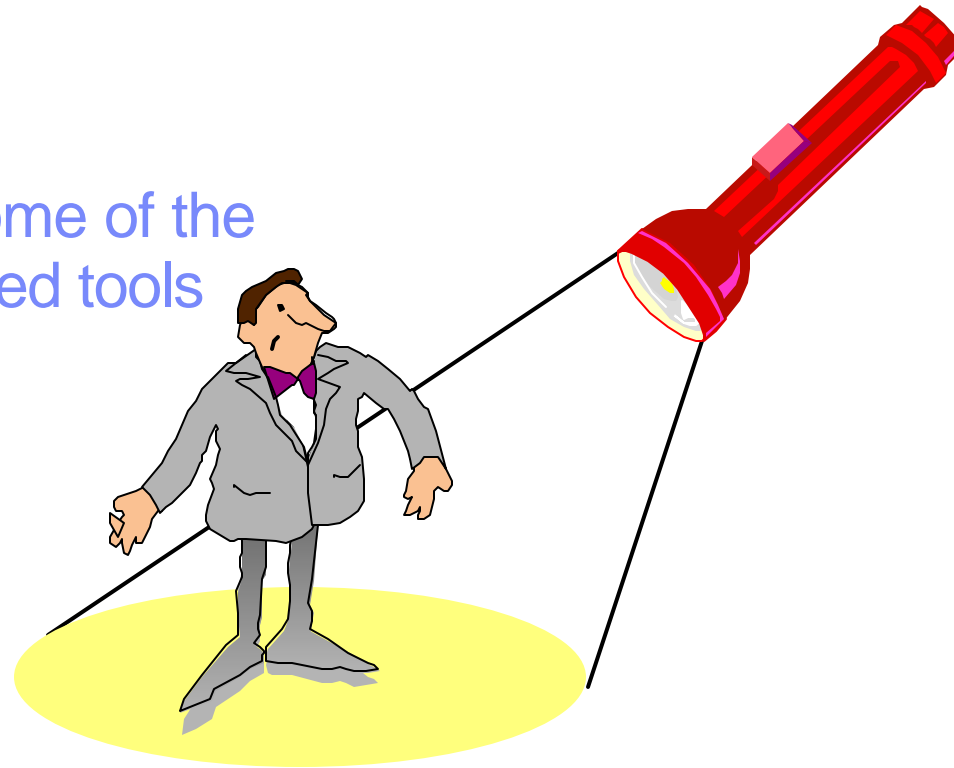


Know when to recommend which product...

Appendix A: Sales Information You Need to Know

- ▶ Positioning
- ▶ Hardware/software requirements
- ▶ Sales Resources
- ▶ Education

Positioning some of the browser-based tools



Main Features

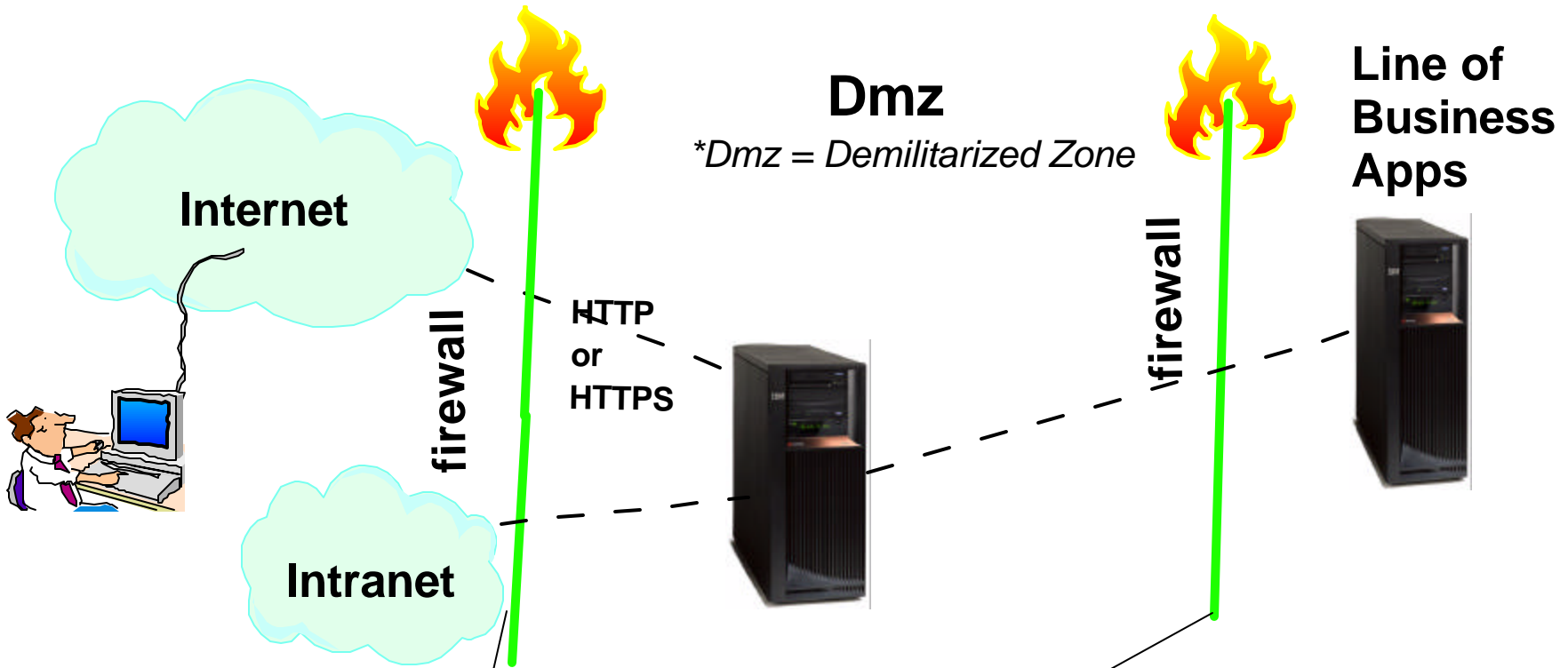
	iSeries Access for Web	Host Publisher	WebFacing	HATS
Web-enables existing Applications	Yes	Yes	Yes	Yes
Based on Java technology	Yes	Yes	Yes	Yes
Presentation	HTML, JSPs and Servlets	HTML, JSP and Java Script	HTML, JSP and Java Script	HTML
Runtime Environment	<ul style="list-style-type: none"> • WAS • ASF Tomcat 	<ul style="list-style-type: none"> • WAS 	<ul style="list-style-type: none"> • WAS 	<ul style="list-style-type: none"> • WAS
Supported Browsers	<ul style="list-style-type: none"> • MS Internet Explorer 5.0 • Netscape 4.7 (AIX, Linux) and 6.2 (Windows) • Opera 5.0 (Linux), and 6.0 (Windows) 	<ul style="list-style-type: none"> • MS Internet Explorer 5.0 • Netscape 4.x or later versions 	<ul style="list-style-type: none"> • MS Internet Explorer 5.0 or later versions 	<ul style="list-style-type: none"> • MS Internet Explorer 5.0 • Netscape 4.x or later versions
Interactive Feature Required	No - unless using 5250	Yes	No - with V5R2 and new hardware	Yes
Supported Host Interfaces	5250	5250, 3270, VT52, VT100, VT220	5250 - from DDS Source. Source must be available for each screen format	5250, 3270
Web-enables System Functions	Yes	Yes	No - limited support for selected commands in WDS V5	Yes
SQL Database Access	Yes	Yes	No - except through application changes	No - except through application changes

F03SP23iSeriesAccessFamilyV5R2.PRZ

Main Features (continued)

	iSeries Access for Web	Host Publisher	WebFacing	HATS
Host Application modernization	No, other than runs in browser	Yes	Yes	Yes
Code Changes Required	No	No	No - although may choose to optimize for the Web	No
Programming effort to convert host interface to Web interface	None	Using Studio: 1. Record host screen navigations and create IOs that encapsulate those navigations. 2. Build JSP pages that require IO input and render IO output	None - unless DDS keywords are not supported by WebFacing	Two methods: 1. default parameters - no pgming effort 2. customization - tracing application execution path, defining rules
Customization	Can customize what iSeries functions user can access	Yes - JSP pages can be customized, and IOs can be reused in a WAS application (Servlet, Web Services, EJB)	1. CODE designer 2. Cascading style sheets 3. Web Tools	1. Web Tools
Allows exposure of Java artifacts to other tools	No	No	Yes	No - may create Java extensions to the application
Merge/split of application screens	No	Yes - handled by macro recorder	Yes -with programming changes	Yes - handled by macro recorder

Using a Dmz*



	Running in DMZ	Required on LOB environment
iSeries Access for Web	WAS or ASF Tomcat iSeries Access for Web	iSeries Access for Web
Host Publisher	WebSphere Application Server	
WebFacing	WebSphere Application Server	
HATS / HATS Limited Edition	WebSphere Application Server	HATS Limited Edition

Server Requirements ... Access for Web (5722-XH2, V5R2)

If you plan to use **ASF Tomcat** web application server...
requires an iSeries with 70 cpw & 256 MB memory

Product No	Product Name	Option	\$
5722-SS1	OS/400 V5R1 or V5R2		
5722-SS1	OS/400 Extended Base Directory Support	Base	w/HW
5722-SS1	OS/400 AFP Compatibility Fonts	3	
5722-SS1	OS/400 Host Servers	8	
5722-SS1	OS/400 QShell Interpreter	12	
5722-SS1	OS/400 Digital Certificate Manager (optional, if you plan to use SSL)	30	
5722-SS1		34	
5722-XW1	iSeries Access Family iSeries Access Enablement Support Be sure to get Service Pack 3 - SI05427	Base 1	\$
5722-JV1	Java Developer Kit	Base	N/C
5722-JV1	Java Developer Kit Version 1.2	3	N/C
5722-JV1	Java Developer Kit Version 1.3 (needed only for Arabic language users)	5	N/C
5722-JC1	Toolbox for Java	Base	
5722-TC1	TCP/IP Connectivity Utilities for iSeries	Base	N/C
5722-DG1	IBM HTTP Server for iSeries <ul style="list-style-type: none"> The ASF Tomcat web application server is part of IBM HTTP Server for iSeries. ASF Tomcat PTFs are delivered within the IBM HTTP Server for iSeries Group PTFs. These PTFs contain all the fixes required to bring the HTTP Server up to a specific fix level. Select PTFs from the HTTP Server Web site (www.ibm.com/eserver/iseries/software/http) and follow the links appropriate for your version of OS/400 	Base	N/C
5722-AC2	Cryptographic Access Provider (56-bit) (if you plan to use SSL)		N/C
5722-AC3	Cryptographic Access Provider (128-bit) (if you plan to use SSL)		N/C
5722-IP1	IBM Infoprint Server (optional)	Base	\$

Server Requirements - Access for Web (5722-XH2, V5R2)

If you plan to use **WebSphere Application Server...**

Product Number	Product Name	Option	\$
5722-SS1 5722-SS1 5722-SS1 5722-SS1 5722-SS1 5722-SS1	OS/400 V5R1 or V5R2 OS/400 Extended Base Directory Support OS/400 AFP Compatibility Fonts OS/400 Host Servers OS/400 QShell Interpreter OS/400 Digital Certificate Manager (if you plan to use SSL)	Base 3 8 12 30 34	w/HW
5722-XW1	iSeries Access Family iSeries Access Enablement Support Be sure to get Service Pack 3 - SI05427	Base 1	\$
5722-JV1 5722-JV1 5722-JV1 5722-JC1	Java Developer Kit Java Developer Kit Version 1.2 Java Developer Kit Version 1.3 Toolbox for Java	Base 3 5 Base	N/C N/C N/C
5722-TC1	TCP/IP Connectivity Utilities for iSeries	Base	N/C
5722-DG1	IBM HTTP Server for iSeries	Base	N/C
5733-WS4 5733-WA4 5722-IWE	WebSphere Application Server Single Server V4.0.3 WebSphere Application Server Advanced Server V4.0.3 WebSphere Express V5.0 (will be supported via PTFs at GA time) Use IBM Workload Estimator for iSeries for recommended minimum requirements for your server hardware at www.ibm.com/eserver/iseries/support/servlet/EstimatorServlet		\$ \$ \$
5722-AC2 5722-AC3	Cryptographic Access Provider (56-bit) (if you plan to use SSL) Cryptographic Access Provider (128-bit) (if you plan to use SSL)		N/C N/C
5722-IP1	IBM Infoprint Server (optional)	Base	\$

Server Requirements - WebSphere Host Publisher V4.0 (5724-B81)

Product Number	Product Name	Option	\$
5722-SS1	OS/400 V5R1 or V5R2	Base	
5722-SS1	OS/400 Extended Base Directory Support	3	w/HW
5722-SS1	OS/400 AFP Compatibility Fonts	8	
5722-SS1	OS/400 Host Servers	12	
5722-SS1	OS/400 QShell Interpreter	30	
5722-SS1	OS/400 Digital Certificate Manager (if you plan to use SSL)	34	
5722-XW1	iSeries Access Family	Base	\$
5724-B81	iSeries Access Enablement Support WebSphere Host Publisher V4.0	1	
5722-JV1	Java Developer Kit	Base	N/C
5722-JV1	Java Developer Kit Version 1.2	3	N/C
5722-JV1	Java Developer Kit Version 1.3	5	N/C
5722-JC1	Toolbox for Java	Base	
5722-TC1	TCP/IP Connectivity Utilities for iSeries	Base	N/C
5722-DG1	IBM HTTP Server for iSeries	Base	N/C
5733-WS4	WebSphere Application Server Single Server V4.0.3		\$
5733-WA4	WebSphere Application Server Advanced Server V4.0.3		\$
5722-IWE	WebSphere Express V5.0 (WHP 4.0 will support via CSD in 2003) Use IBM Workload Estimator for iSeries for recommended minimum requirements for your server hardware at www.ibm.com/eserver/iseries/support/servlet/EstimatorServlet		\$
5722-AC2	Cryptographic Access Provider (56-bit) (if you plan to use SSL)		N/C
5722-AC3	Cryptographic Access Provider (128-bit) (if you plan to use SSL)		N/C

Sales Resources ... WebSphere Sales Support Centre

Owner:

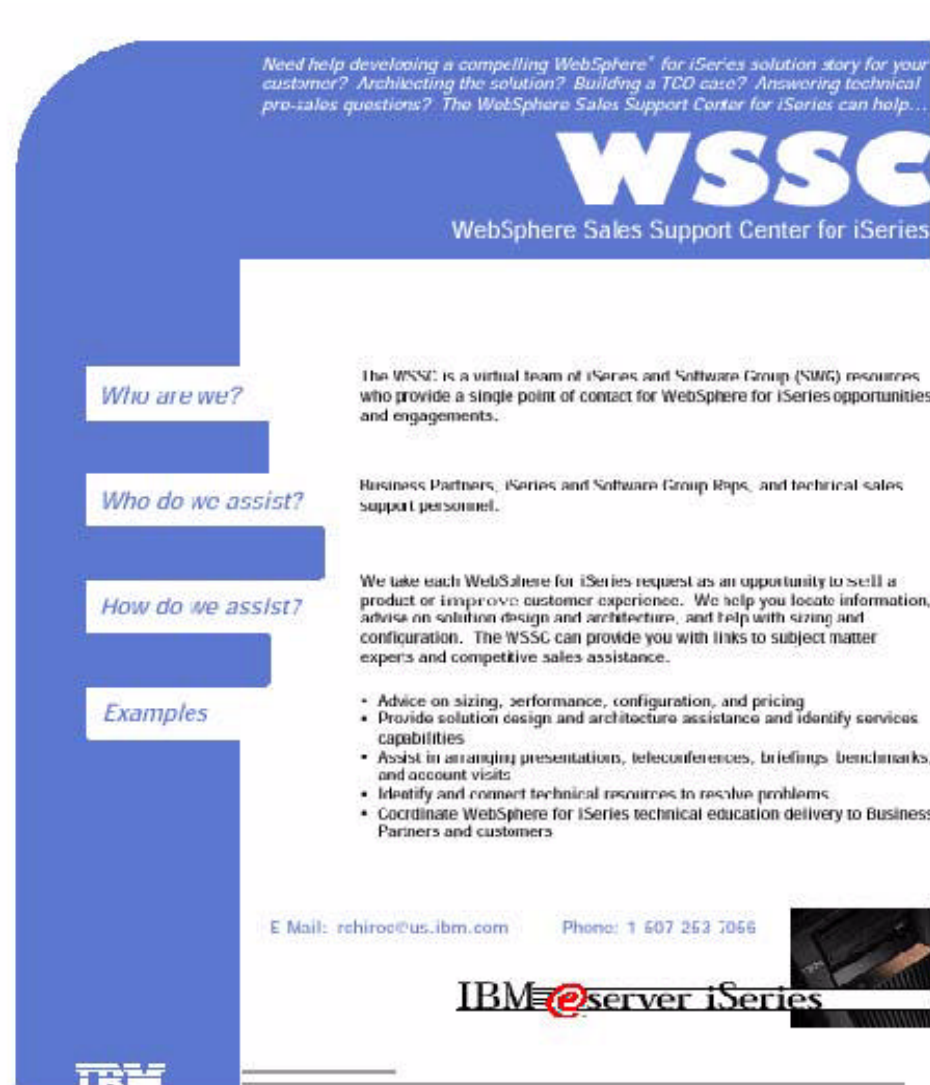
- Jointly sponsored by iSeries and WS
- Kevin Larsen is Team Leader

Mission:

- Provide support to BP, iSeries, AIM Reps
- Sales and Technical Sales Support
- Negotiate technical education if required

How to Reach Them:

- rchiroc@us.ibm.com
- 1-507-253-7066



Need help developing a compelling WebSphere® for iSeries solution story for your customer? Architecting the solution? Building a TCO case? Answering technical pre-sales questions? The WebSphere Sales Support Center for iSeries can help...

WSSC

WebSphere Sales Support Center for iSeries

Who are we?

The WSSC is a virtual team of iSeries and Software Group (SWG) resources who provide a single point of contact for WebSphere for iSeries opportunities and engagements.

Who do we assist?

Business Partners, iSeries and Software Group Reps, and technical sales support personnel.



How do we assist?

We take each WebSphere for iSeries request as an opportunity to sell a product or improve customer experience. We help you locate information, advise on solution design and architecture, and help with sizing and configuration. The WSSC can provide you with links to subject matter experts and competitive sales assistance.

Examples

- Advice on sizing, performance, configuration, and pricing
- Provide solution design and architecture assistance and identify services capabilities
- Assist in arranging presentations, teleconferences, briefings, benchmarks, and account visits
- Identify and connect technical resources to resolve problems
- Coordinate WebSphere for iSeries technical education delivery to Business Partners and customers

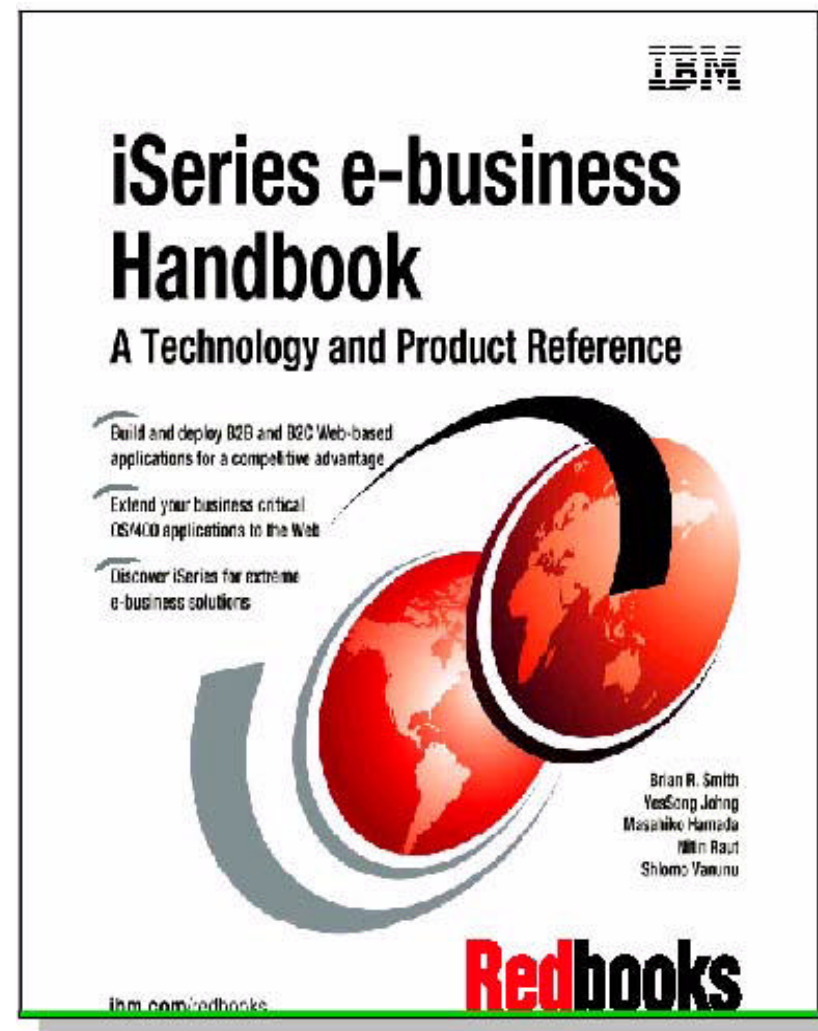
E Mail: rchiroc@us.ibm.com Phone: 1 507 253 7066

Sales Resources ... iSeries e-business Redbook: SG24-6711

Topics:

- ✓ The how, what, and why of iSeries e-business
- ✓ Building e-business sites: Phased approach
- ✓ e-business-out: Extending core applications to the Web
- ✓ Domino Application Server for AS/400
- ✓ WebSphere Application Server
- ✓ WebSphere Commerce Suite for iSeries V5R1
- ✓ B2B: Transforming business processes for e-business
- ✓ B2B: Connectors, Application solutions and Services



Web Enablement Workshops (aka WildFire)

- **Aim:**
 - ▶ **Provide detailed information about many of IBM's e-business tools and solutions**
- **Format:**
 - ▶ **4 days with combination of lecture and hands-on**
 - ▶ **taught by eTC staff**
 - in Rochester
 - ▶ **Currently scheduled biweekly**
 - ▶ **Customers and partners nominated by IBM Reps**
 - ▶ **Course code: ITC08 "Web Enablement Workshops for iSeries"**

Education ... Host Publisher - getting started

■ Self-learning

- ▶ Programmer's Guide included on Host Publisher Studio CD
- ▶ 'Building A Java Adapter Over a 5250 Application to enable B-B transactions' article
 - An example of taking an interactive 5250 order entry application running on an iSeries machine, and making it accessible via a web browser. See Web page: www.iseries.ibm.com/developer/java/topics/hostpubadapter.html

■ Live Education

- ▶ IBM WebSphere Host Publisher Application Development Workshop
 - Course Code: SW910, For schedule information, call 1-800-IBM-TEACH (426-8322)
- ▶ WebSphere Host Publisher QuickStart Services
 - A comprehensive suite of services to assist customers with the installation and customization of Host Publisher
 - Installation & Connectivity Module - 3 days
 - Host Publisher Workshop Module - 5 days
 - Host Publisher Remote Consulting Module - 40 hours
- ▶ PartnerWorld for Developers workshops
 - See Web page for next workshop (www.ibm.com/eserver/series/developer/)



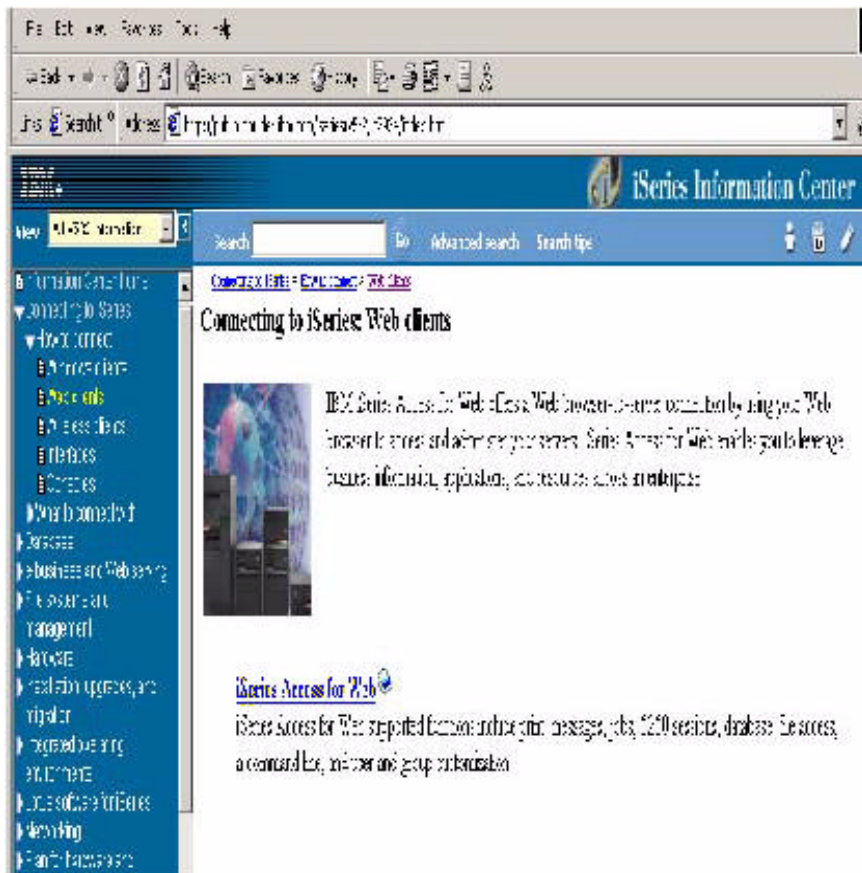
Acrobat Document

■ Consulting

- ▶ IBM Rochester CustomTechnology Center (CTC)
 - Assists customers and business partners in developing and enhancing eServer business applications. See www.ibm.com/eserver/series/service/ctc/

Reference Material ... iSeries Access for Web

All documentation for iSeries Access for Web can be downloaded from the Web at: www.ibm.com/eserver/series/access



- **iSeries Access for Web, Version 5, SC41-5518**
 - ▶ Setup and Installation information
 - ▶ Users Guide
- **URL Interfaces to iSeries Access for Web**
 - ▶ Sample Code and examples on how to build links to directly access iSeries Access for Web functions and your other programs
- **Redbook: iSeries Access for Web V5R2 and WebSphere Host Publisher**
 - ▶ Examples include how to customize Web page for your company, how to access other iSeries servers, etc

Trademarks and Disclaimers

© IBM Corporation 1994-2002. All rights reserved.

References in this document to IBM products or services do not imply that IBM intends to make them available in every country.

The following terms are trademarks or registered trademarks of International Business Machines Corporation in the United States, other countries, or both:

AS/400	IBM (logo)
AS/400e	iSeries
e (logo) business	OS/400

IBM

Lotus, Freelance Graphics, and Word Pro are registered trademarks of Lotus Development Corporation and/or IBM Corporation.

Domino is a trademark of Lotus Development Corporation and/or IBM Corporation.

C-bus is a trademark of Corollary, Inc. in the United States, other countries, or both.

Java and all Java-based trademarks are trademarks of Sun Microsystems, Inc. in the United States, other countries, or both.

Microsoft, Windows, Windows NT, and the Windows logo are trademarks of Microsoft Corporation in the United States, other countries, or both.

ActionMedia, LANDesk, MMX, Pentium and ProShare are trademarks of Intel Corporation in the United States, other countries, or both.

UNIX is a registered trademark of The Open Group in the United States and other countries.

SET and the SET Logo are trademarks owned by SET Secure Electronic Transaction LLC.

Other company, product and service names may be trademarks or service marks of others.

Information is provided "AS IS" without warranty of any kind.

All customer examples described are presented as illustrations of how those customers have used IBM products and the results they may have achieved. Actual environmental costs and performance characteristics may vary by customer.

Information in this presentation concerning non-IBM products was obtained from a supplier of these products, published announcement material, or other publicly available sources and does not constitute an endorsement of such products by IBM. Sources for non-IBM list prices and performance numbers are taken from publicly available information, including vendor announcements and vendor worldwide homepages. IBM has not tested these products and cannot confirm the accuracy of performance, capability, or any other claims related to non-IBM products. Questions on the capability of non-IBM products should be addressed to the supplier of those products.

All statements regarding IBM future direction and intent are subject to change or withdrawal without notice, and represent goals and objectives only. Contact your local IBM office or IBM authorized reseller for the full text of the specific Statement of Direction.

Some information in this presentation addresses anticipated future capabilities. Such information is not intended as a definitive statement of a commitment to specific levels of performance, function or delivery schedules with respect to any future products. Such commitments are only made in IBM product announcements. The information is presented here to communicate IBM's current investment and development activities as a good faith effort to help with our customers' future planning.

Performance is based on measurements and projections using standard IBM benchmarks in a controlled environment. The actual throughput or performance that any user will experience will vary depending upon considerations such as the amount of multiprogramming in the user's job stream, the I/O configuration, the storage configuration, and the workload processed. Therefore, no assurance can be given that an individual user will achieve throughput or performance improvements equivalent to the ratios stated here.

Photographs shown are of engineering prototypes. Changes may be incorporated in production models.