

Lotus Notes Traveler 入门

主讲人：陈洁
IBM Lotus 软件工程师



Agenda

- *Overview*
- Architecture
- Server
- Device

IBM Lotus Notes Traveler



- Provides automatic, over-the-air Email and PIM data synchronization capabilities for connecting Notes Domino to mobile phones and devices

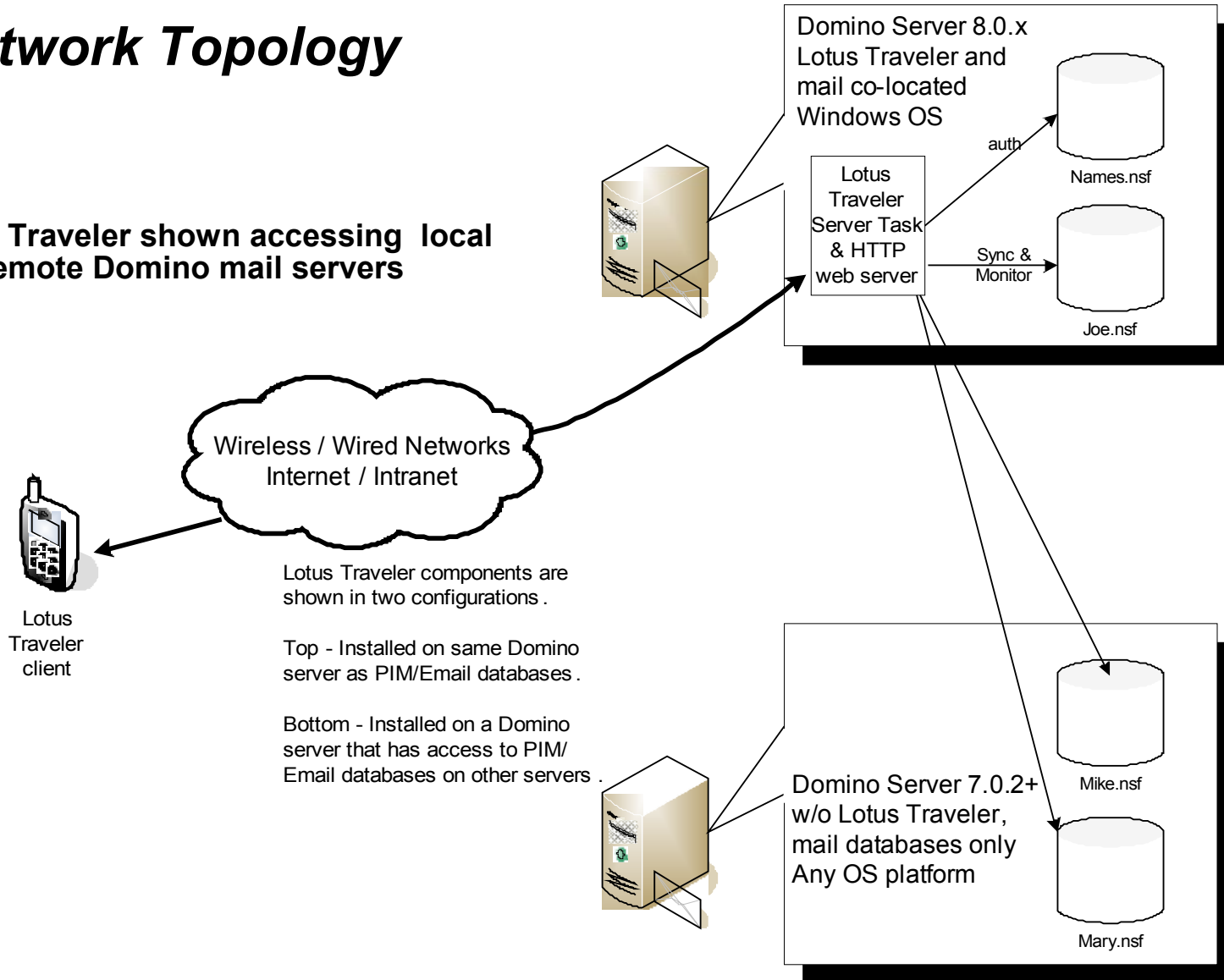


IBM Lotus Notes Traveler – Core features

- Device and Server components
 - Lotus Traveler integrated with Domino 8.0.x/8.5.x Server
 - Released with Domino but separate install media (webkit and CD)
- Over-the-air notifications used to automatically keep your data current
 - Email, Calendar, Address Book, To Do, Journal
- Background, unattended 2-way data synchronization
- Native device applications allow you to keep working regardless of connection state
- Customizable alerts for new Email
- Integrates with Lotus Mobile Connect for secure access to corporate data

Network Topology

Lotus Traveler shown accessing local and remote Domino mail servers



Lotus Traveler components are shown in two configurations .

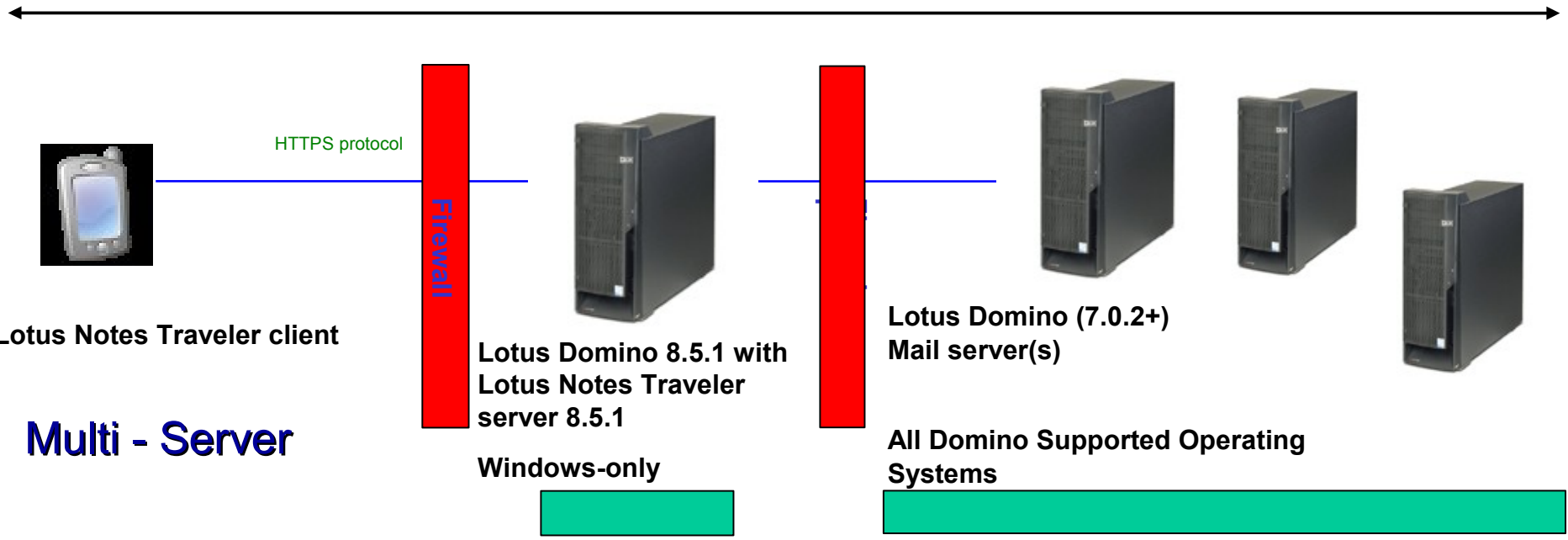
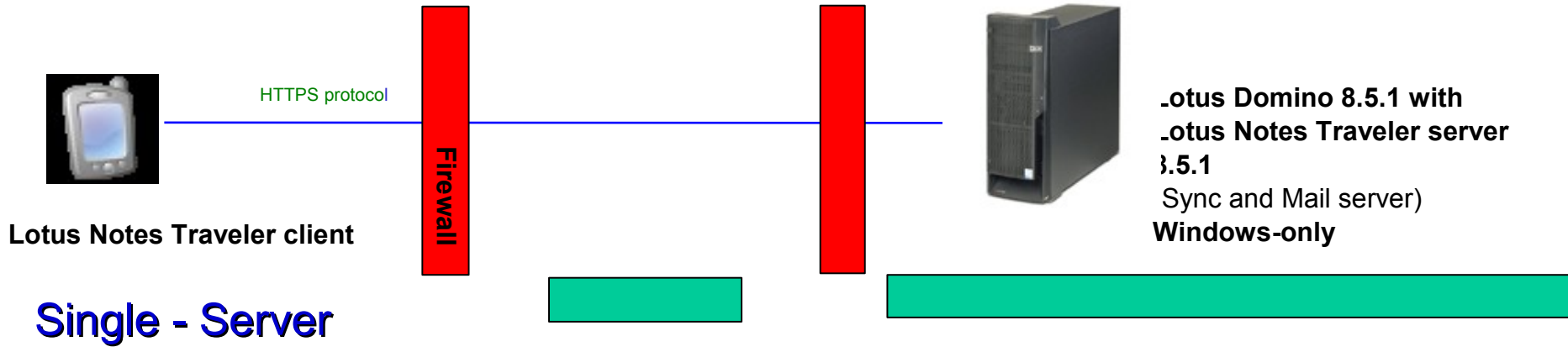
Top - Installed on same Domino server as PIM/Email databases .

Bottom - Installed on a Domino server that has access to PIM/Email databases on other servers .

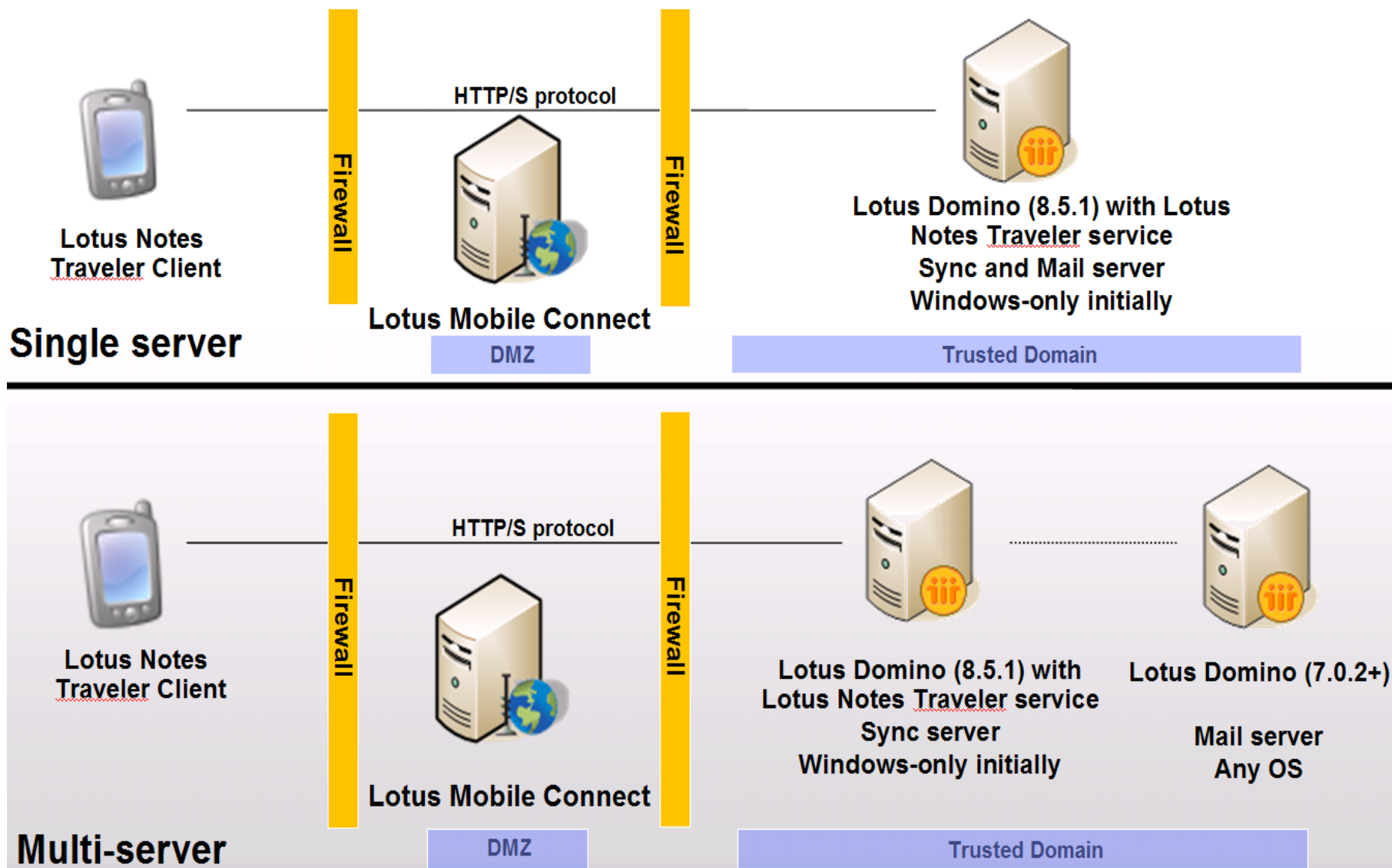
Agenda

- Overview
- *Architecture*
- Server
- Device

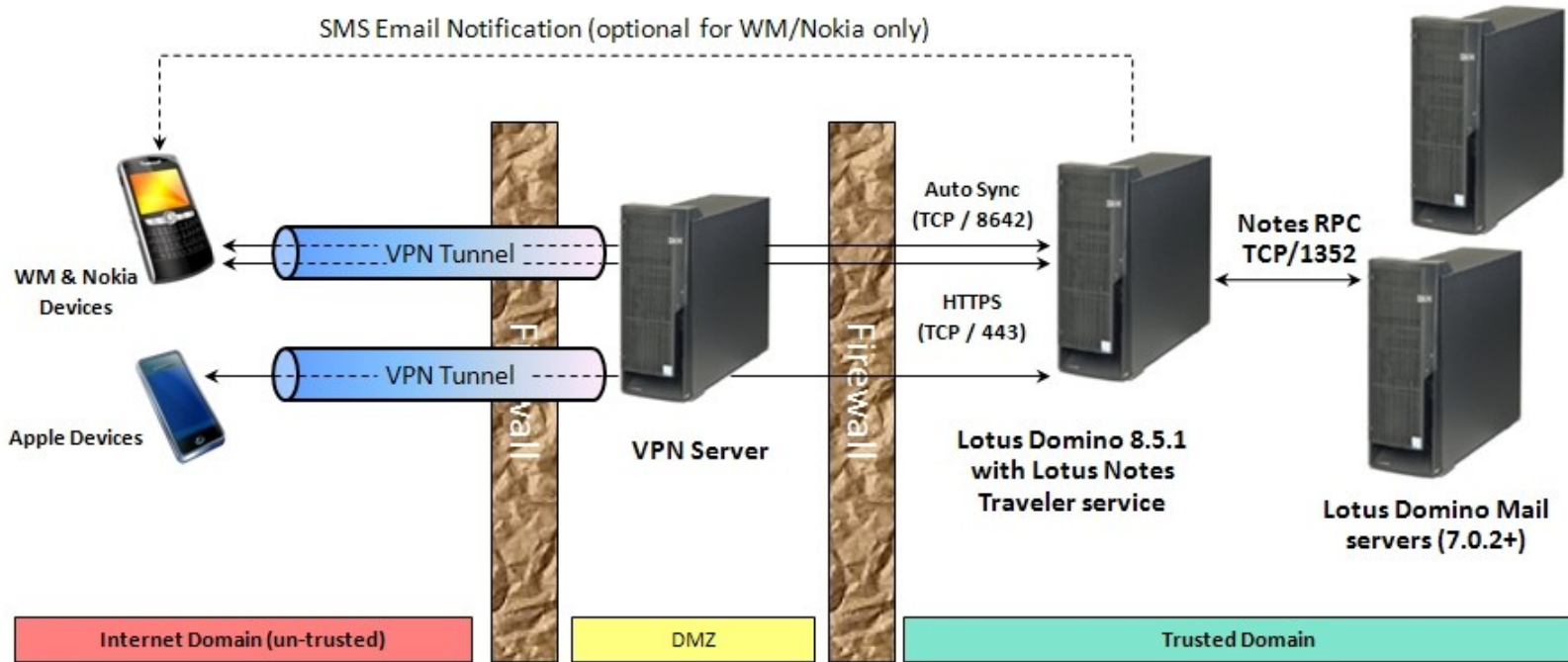
Topology – Configurations for Lotus Notes Traveler



Topology – Configurations when using LMC



Network Topology – for VPN



Agenda

- Overview
- Architecture
- *Server*
- Device

Lotus Notes Traveler Server

- Requirements
- Planning
- Installation
- Configuration
- Administration



Server - Requirements

- Operating System
 - Windows 2003/2008 Server for Intel (32&64 bit)
 - Linux Enterprise Redhat/Suse(32&64bit) – **ONLY in 8.5.2**
- Requires Domino 8.0.1/8.5.x Server with HTTP web server support installed
- Supports Domino partitioned installations
- Remote mail database support
 - Domino 7.0.2 servers or above
 - Operating system platform can be anything Domino supports
- Mail File Templates
 - Standard and iNotes 6.5 and above

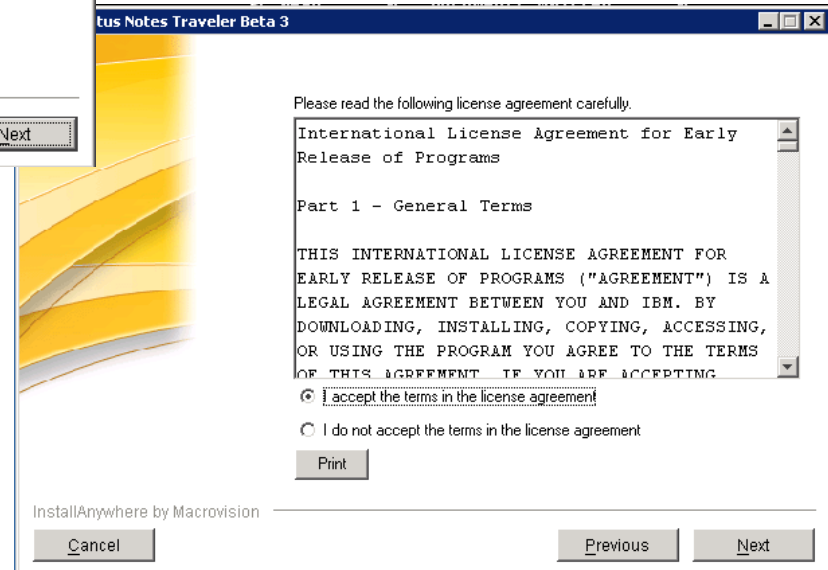
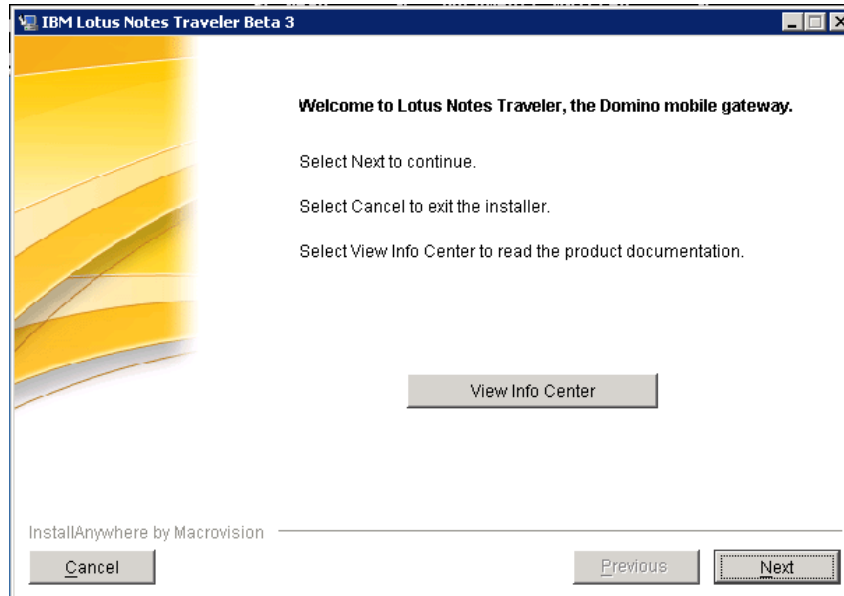
Server – Planning / Access and Authentication

- Domino server authentication
 - Lotus Traveler is leveraging the security access and authentication mechanisms used by the Domino web server
 - By default HTTP password is used by Domino web server
 - Domino Directory assistance can be configured for more advanced authentication techniques (e.g. LDAP directory)
- Accessing Lotus Traveler user databases
 - Databases must grant *manager access* to the Lotus Traveler server
 - Simplified when server is part of LocalDomainServers group

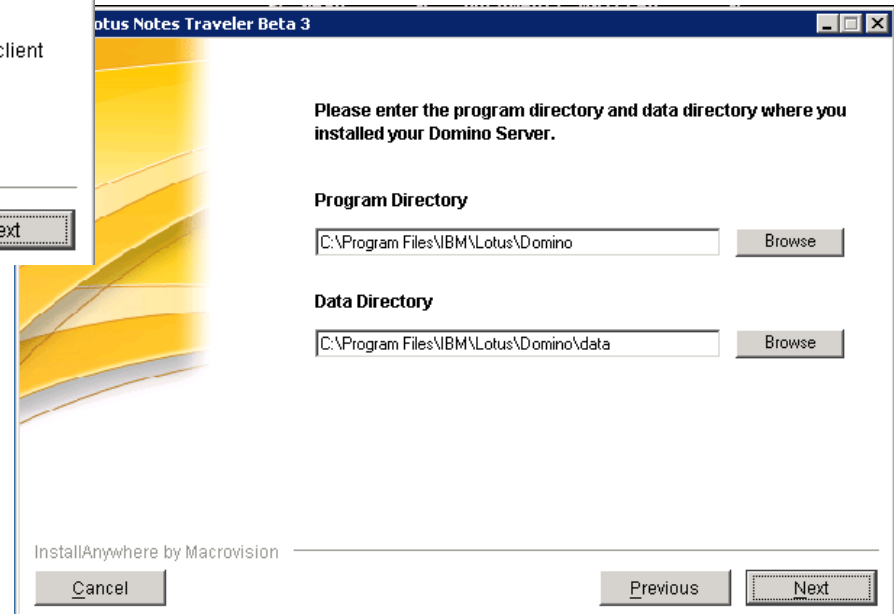
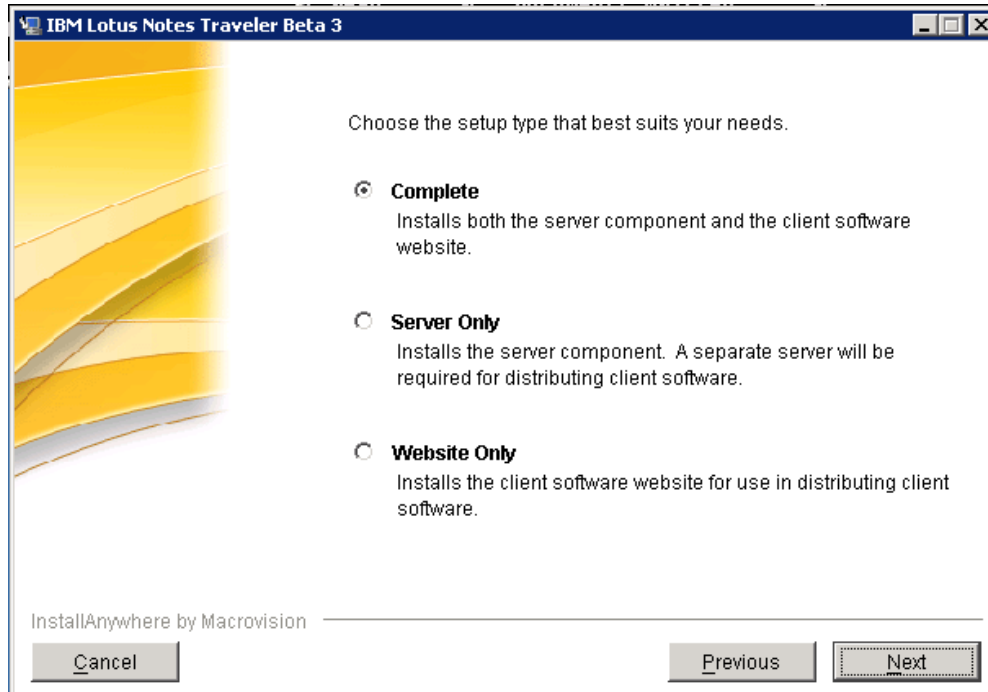
Server - Installation

- Download in Passport Advantage:
<http://www-01.ibm.com/software/howtobuy/passportadvantage/>
- Must already have a Domino 8.0.1/8.5.x server installed.
Domino server should be shutdown first.
- Installs all files needed to run the Lotus Traveler server task and a web site that contains the Lotus Traveler clients
- Easy installation – default path automatically performs all configuration and setup for the administrator
- Lotus Traveler task (TRAVELER) is added to the ServerTasks parameter in notes.ini

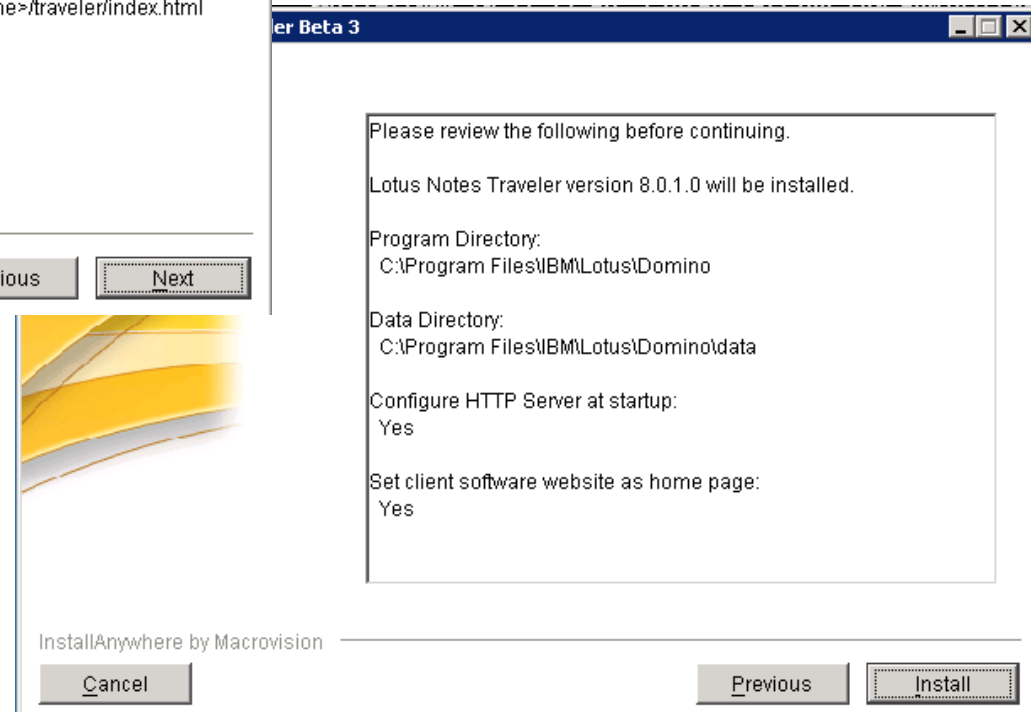
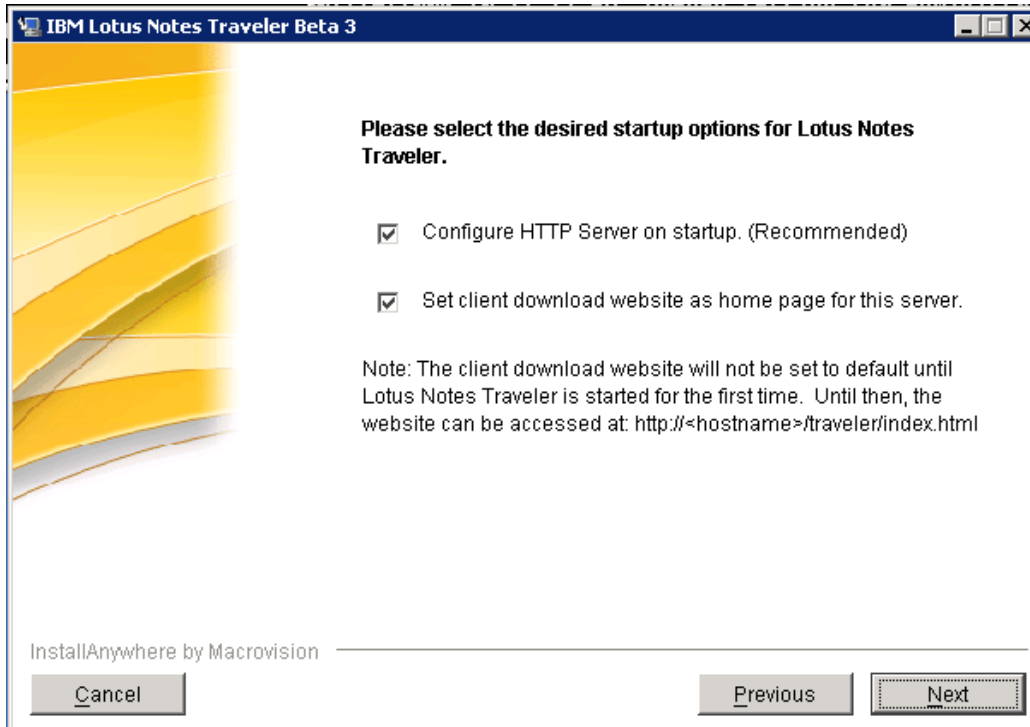
Server - Installation



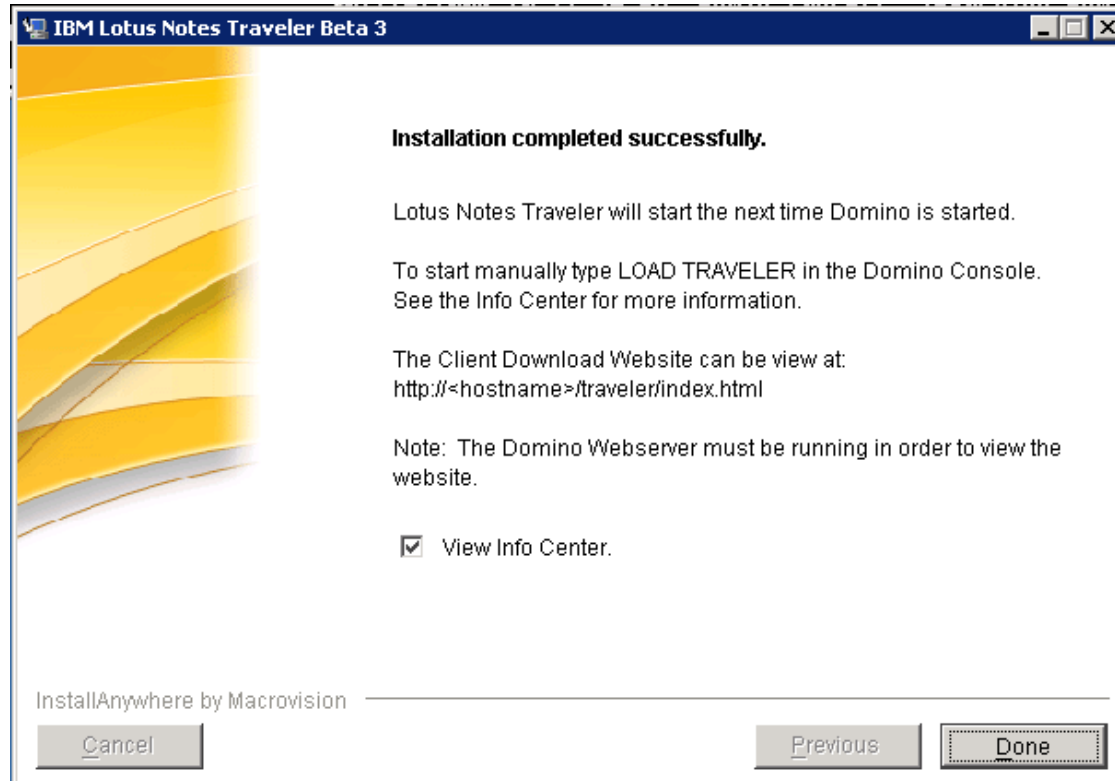
Server - Installation



Server - Installation



Server - Installation



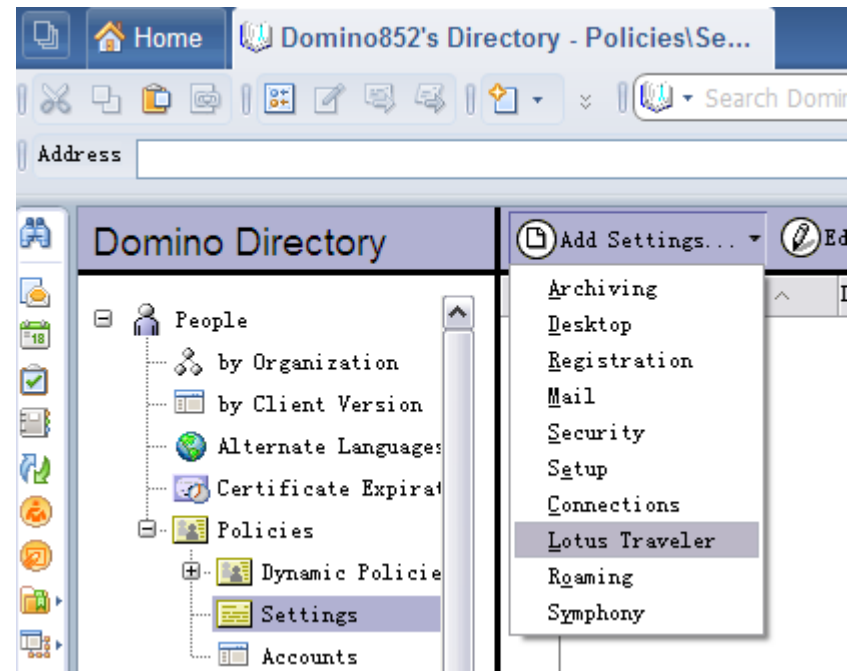
Server - Administration

- Domino administrator client used for most admin tasks
- Start / Stop Lotus Traveler server task

load traveler/tell traveler
quit/restart task traveler

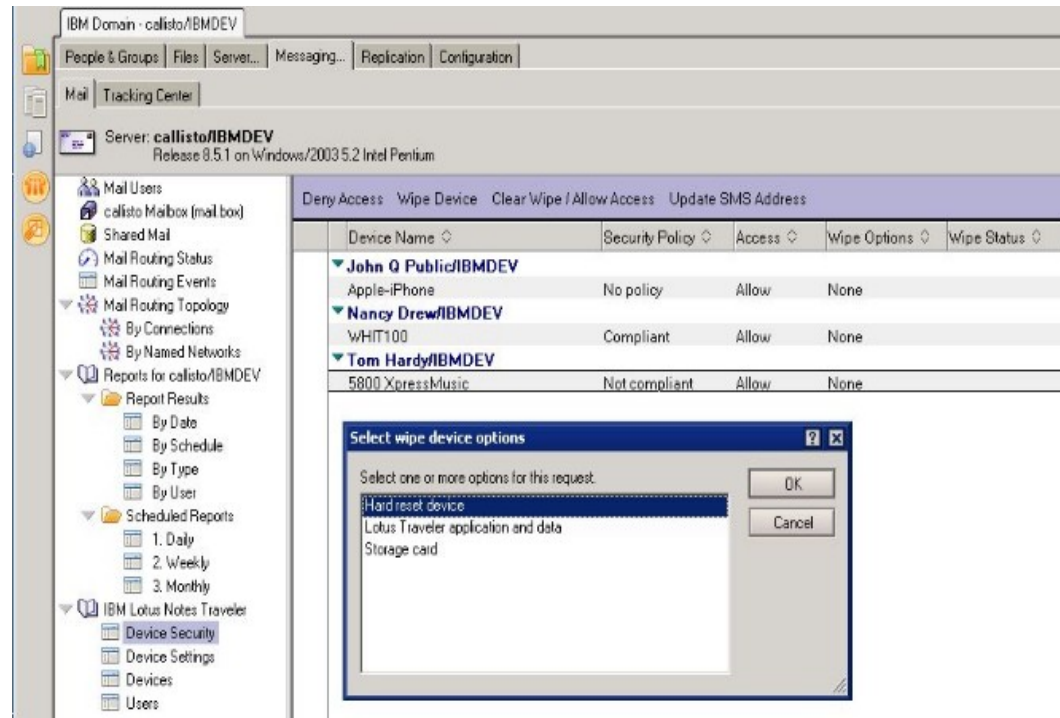
- Most configuration parameters are available in Lotus Traveler tab of the Domino server document
- Lotus Traveler policies can be used to assign client settings to groups of users

MTAs... Miscellaneous Transactional Logging Shared Mail DAOS Lotus Traveler	
Basics	
Maximum Memory Size:	512 MB
IPC Socket Ports:	50125 50126
External Server URL:	
Lotus Traveler Access	
Access server:	All users can access this server
Not access server:	
Remote user commands:	Disabled
User managed security:	Enabled



Server – Administration

- Remote Wipe
 - Several wipe options available for WM/Nokia, Apple only supports hard reset
 - Hard reset device action removes all data and applications on device
 - Wipe commands are delivered over TCP and SMS push channels (no SMS support on iPhone)
 - Wipe order remains in effect on the server until cancelled

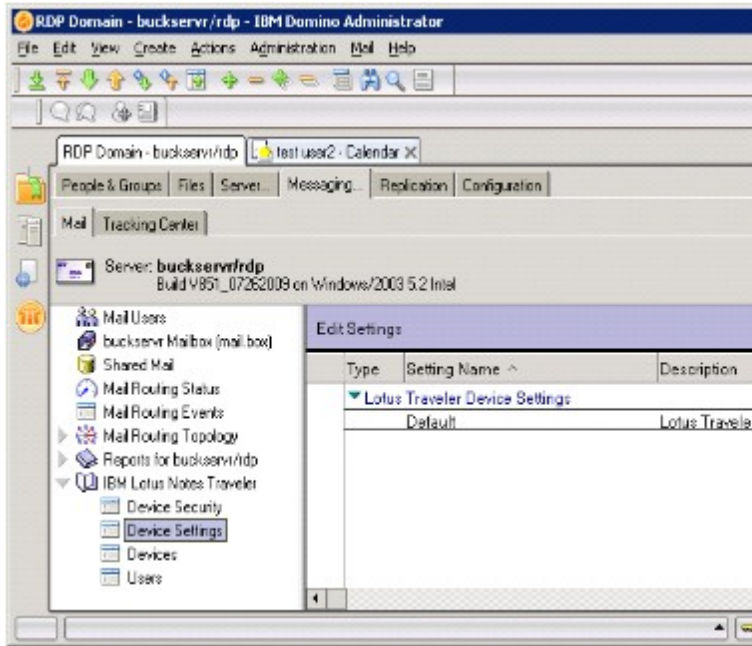


The screenshot shows the Lotus Notes Administration Console for the IBM Domain - callisto/IBMDEV. The main window displays a table of devices with columns for Device Name, Security Policy, Access, Wipe Options, and Wipe Status. A dialog box titled 'Select wipe device options' is open, showing a list of options for wiping a device: 'Hard reset device', 'Lotus Traveler application and data', and 'Storage card'. The 'Hard reset device' option is selected.

Device Name	Security Policy	Access	Wipe Options	Wipe Status
John Q Public/IBMDEV	Apple-iPhone	No policy	Allow	None
Nancy Drew/IBMDEV	WHIT100	Compliant	Allow	None
Tom Hardy/IBMDEV	5800 XpressMusic	Not compliant	Allow	None

Server – Administration

- Default Traveler Policy
- Lotus Notes Traveler Policy



Lotus Traveler Device Settings : Default

Basics | Preferences | Assignment |

Sync | Filter Settings | Device Settings | Security Settings |

Device Security		Violation Action
<input checked="" type="checkbox"/> Device Password		Report
Password Type:	Simple PIN	Report
Inactivity Timeout (maximum):	30 minutes	Report
Password History Count:	0	
Password Expiration Period:	0 days	
Wrong passwords before wiping device:	7	
<input type="checkbox"/> Storage card encryption		Report

Password Type Mapping for Nokia Devices

Simple Pin	
Minimum Password Length:	4
Maximum Times Character Repeated:	0
<input type="checkbox"/> No Adjacent Numbers	
<input type="checkbox"/> Require Alphanumeric	
<input type="checkbox"/> Upper and Lower Case	
Strong Alphanumeric	
Minimum Password Length:	8
Maximum Times Character Repeated:	1
<input type="checkbox"/> No Adjacent Numbers	
<input checked="" type="checkbox"/> Require Alphanumeric	
<input checked="" type="checkbox"/> Upper and Lower Case	

Agenda

- Overview
- Architecture
- Server
- *Device*

Device Support



- Windows Mobile 5/6/6.X Professional and SmartPhone devices(touchscreen and non-touchscreen devices)
- Nokia manufactured Series 60 3rd and 5th edition
- Apple Devices(OS 3.0+)
 - iPhone 3G/3GS
 - iPhone 4
 - iPod Touch
 - Ipad
- Android
 - V2.0.1+(Traveler 8.5.2.1 or higher)
 - V3.0(Traveler 8.5.2.2 or higher)

How to Install Traveler on Iphone– Creating an account

- Creating account using Apple Profile

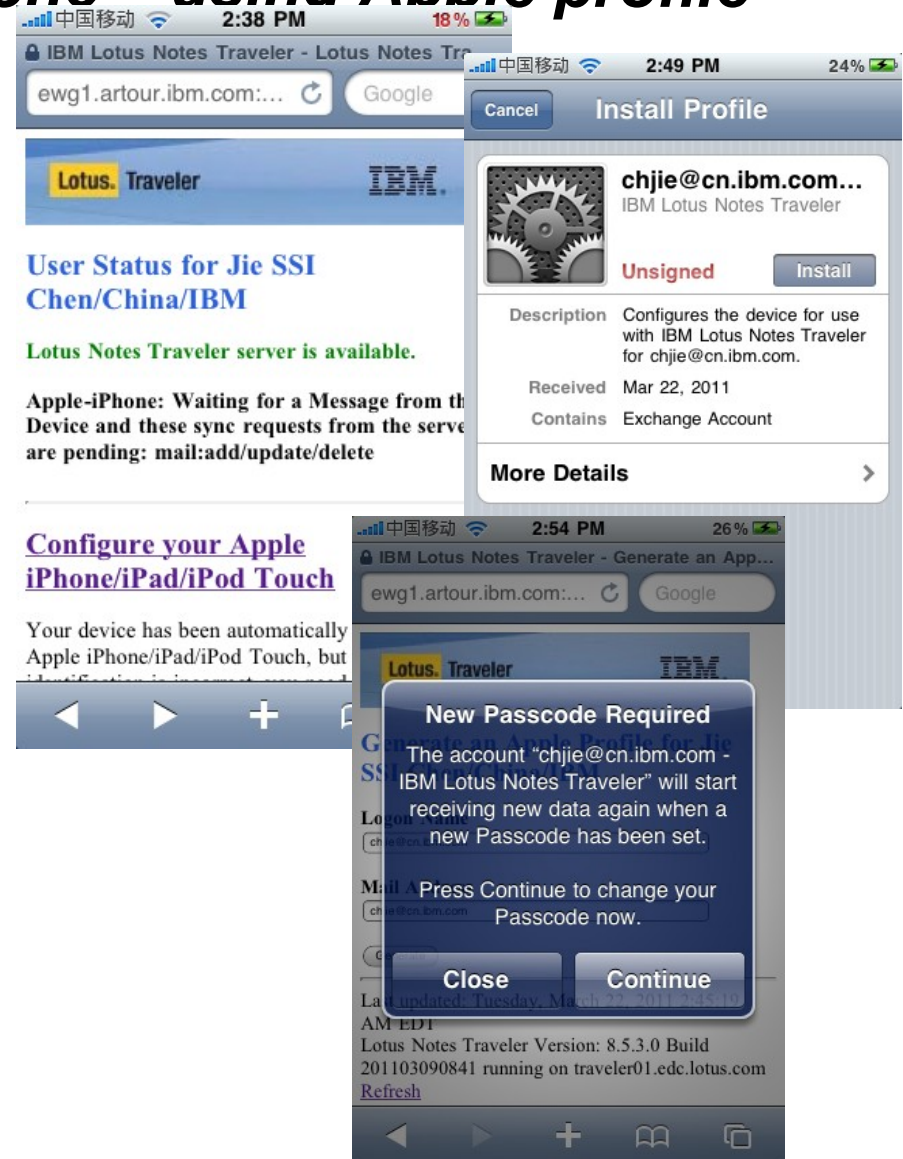
http://publib.boulder.ibm.com/infocenter/domhelp/v8r0/topic/com.ibm.help.Int851.doc/Apple_account_create_profile.html

- Creating account manually

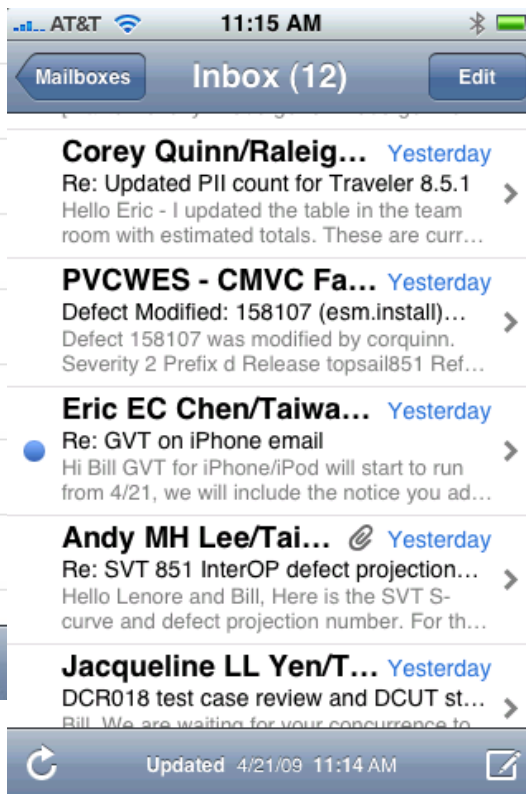
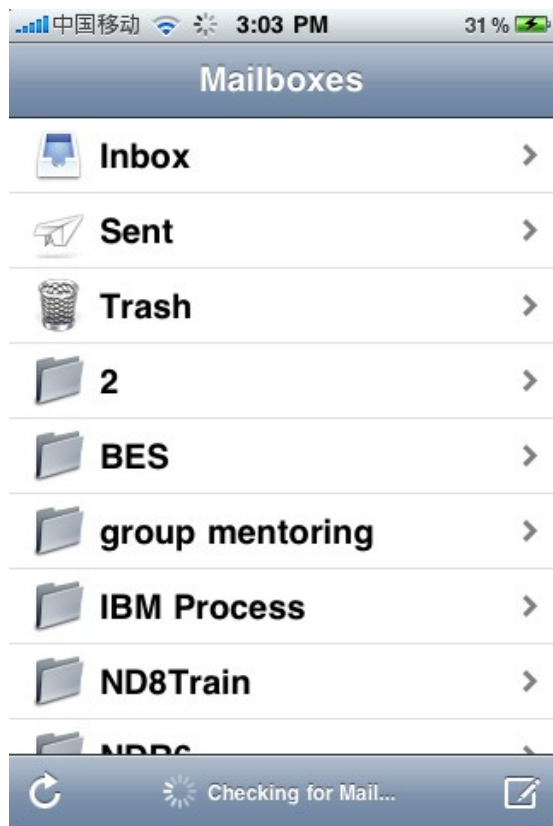
http://publib.boulder.ibm.com/infocenter/domhelp/v8r0/topic/com.ibm.help.Int851.doc/Apple_account_create_manually.html

How to Install Traveler on Iphone – using Apple profile

- Safari:
<http://serverFQDN/servlet/traveler>
- Login in with your username and HTTP password
- Choose: “Configure your Apple Iphone/Ipad/Ipod Touch”
- Click: Genegate
- Click: Install -> Install Now



How to Install Traveler on Iphone



Lotus Notes Traveler Companion

- iPhone Application
- Allow users to read Domino-encrypted mail
- To Read encrypted mail, Notes ID need to be upload to mailfile.
- Available for free for Apple Itune App Store



Notes ID Management for Jie SSI Chen/China/II

Your Notes ID, a file that your administrator creates, allows you to encrypt, decrypt, and sign messages. It contains your name, security certificates, and other information.

Status

Encrypting, decrypting, and signing messages are not enabled because the

Upload the Notes ID

Add the Notes ID to your mail database. If the Notes ID already exists in your ma

Last updated: Friday, March 25, 2011 5:04:07 AM EDT

Lotus Notes Traveler Version: 8.5.3.0 Build 201103090841 running on traveler01

[Refresh](#)

[Lotus Notes Traveler User Home Page](#)



From: Bill Wimer > Hide

To: Heath Holcomb >

Secret Plans

November 2, 2009 12:41 PM [Mark Unread](#)

This document is encrypted and requires either the use of a Lotus Notes or iNotes client to view the content, or view this email on your device with the [Lotus Traveler Companion](#) application.



You From: Bill Wimer

To: Heath Holcomb

Secret Plans

Mon, 2 Nov 2009 12:37:12 -0500 (EST)

alt. Heath,

The drop will occur this Wednesday at the old tap room. Be there at 6.



Bill

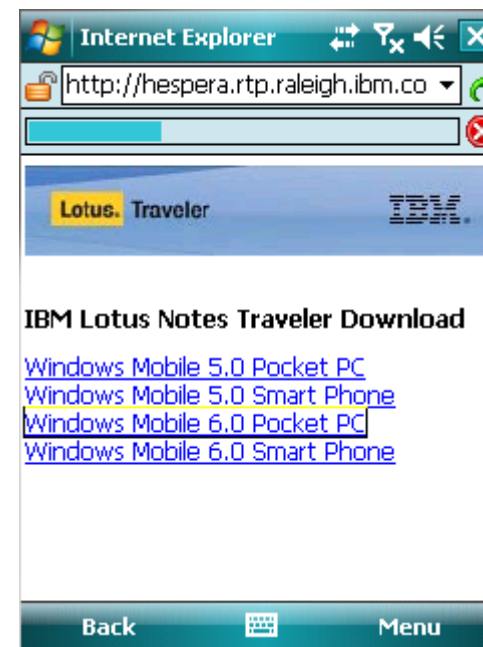
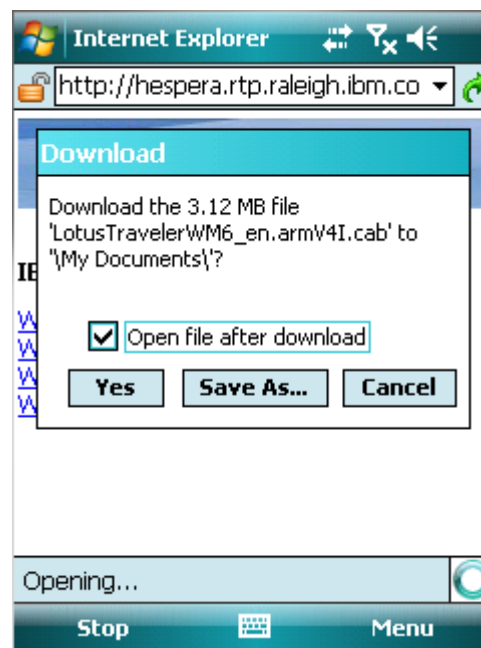
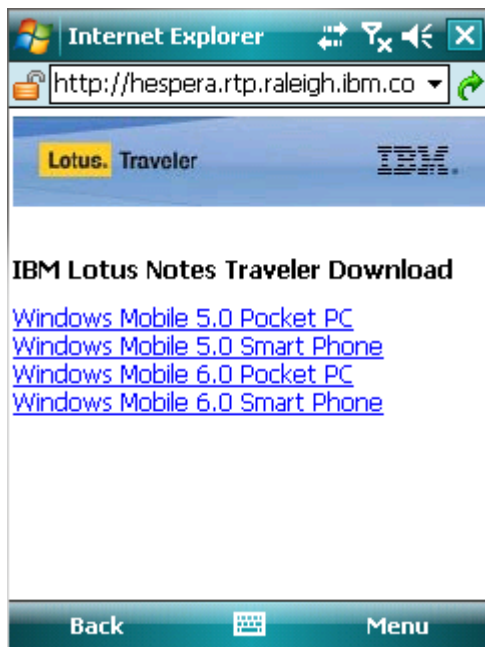
Bill Wimer - bwimer@us.ibm.com
 Lotus Notes Traveler | Workplace, Portal, and Collaboration | Lotus Software
 4205 S. Miami Blvd., Durham NC 27709
 919-254-7434 (office) | 444-7434 (IBM tie-line)

Windows Mobile - Installation

- User moves the installation CAB file to the device and runs it
- Downloaded to the device via
 - Web Site installed on the Lotus Traveler server
 - Active Sync via cradle attachment, Bluetooth or Infrared
 - Memory Card

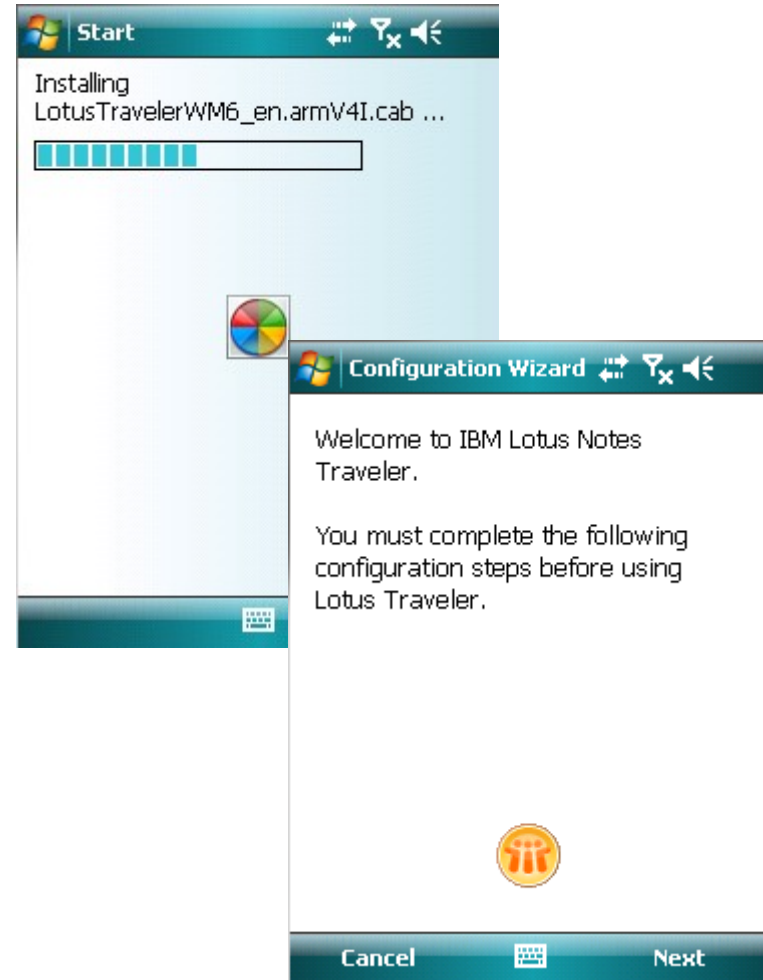
Windows Mobile - Installation

- Installing via the Lotus Traveler web site



Windows Mobile - Registration

- Installs files to \Program Files\Lotus Traveler
- Program shortcuts added
- Immediately following installation, Traveler launches and walks the user through the registration wizard



Windows Mobile - Registration

- > Wizard prompts the user for server connection information
- > Screens are pre-filled if response file is present
- > Advanced dialog provides option to change to non-standard connection settings

The image displays two screenshots of the Configuration Wizard on a Windows Mobile device. The top screenshot shows the main registration screen with the following fields and values:

- User ID:** jcollins
- Password:** *****
- Server:** hespera.rtp.raleigh.ibm.com

Below the fields is an "Advanced" button. At the bottom of the screen is a "Back" button with a keyboard icon.

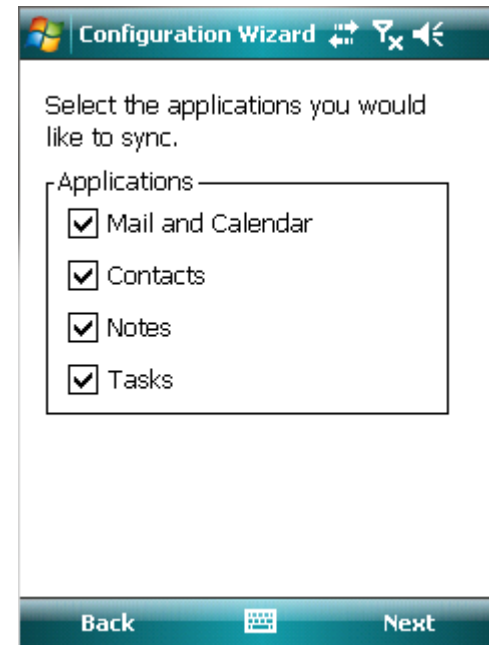
The bottom screenshot shows the "Advanced" dialog with the following fields and values:

- Auto sync port:** 8642
- HTTP port:** 80
- HTTPS port:** 443
- Sync protocol:** HTTP (selected from a dropdown menu)
- Servlet:** /servlet/traveler

At the bottom of the dialog are "Done" and "Cancel" buttons, with a keyboard icon between them.

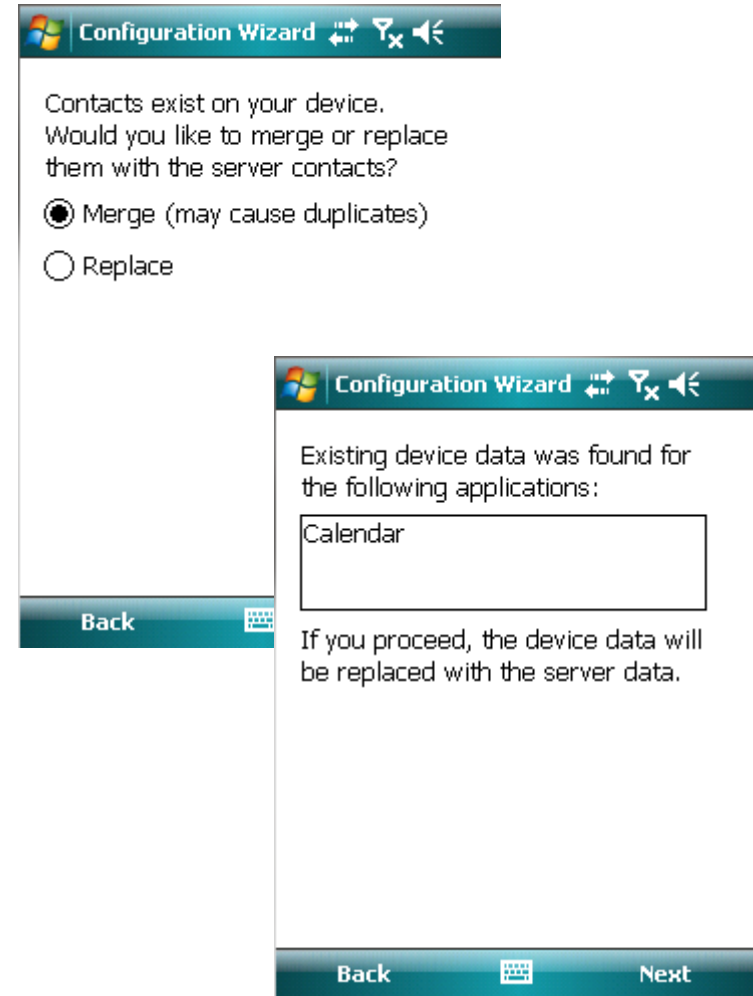
Windows Mobile - Registration

- The device attempts to register with the server. If there are any problems detected, they are reported to the user at this point.
- If the device can contact the server and retrieve the user's device profile, the user is asked to identify which applications to keep updated with Auto Sync.



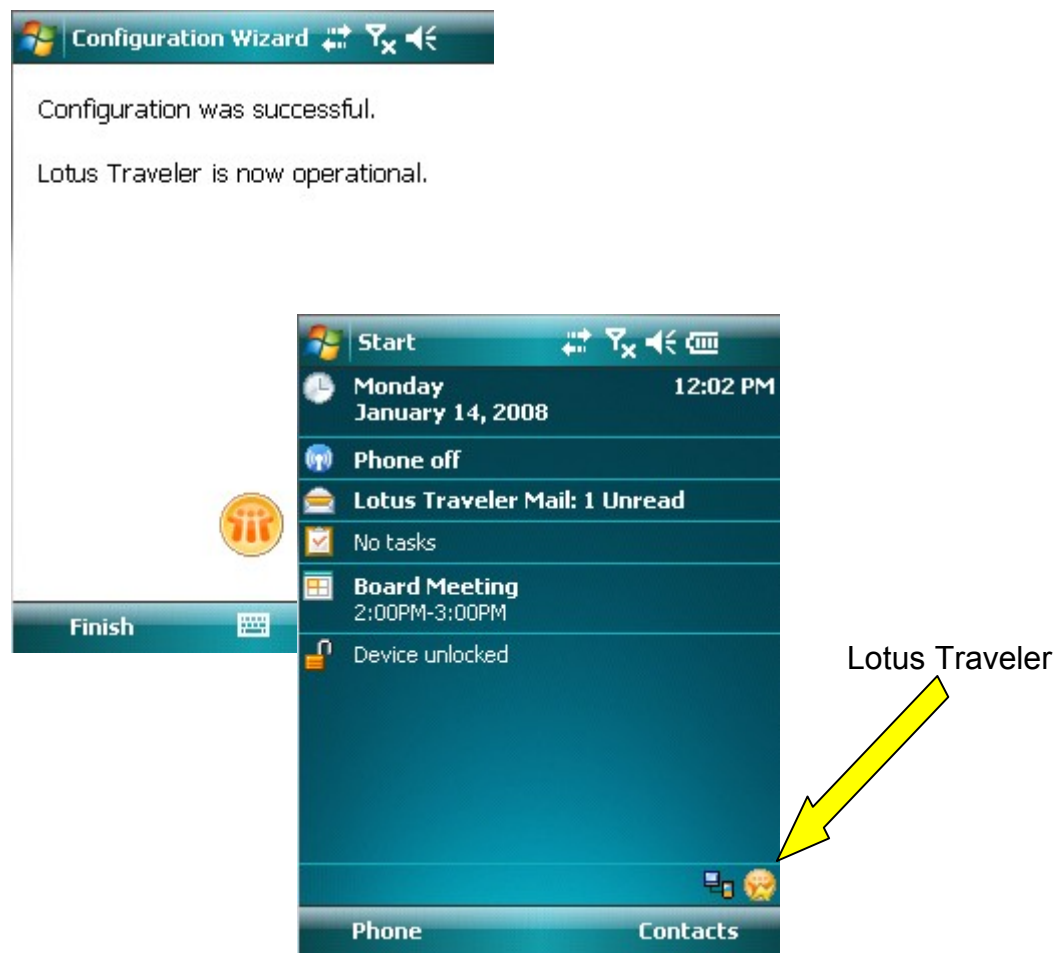
Windows Mobile - Registration

- If contact data exists on the device, user is asked to either merge or replace
- If calendar, todo or journal data exist on the device, user is warned that these will be replaced
- Lotus Traveler Email is always replaced if present



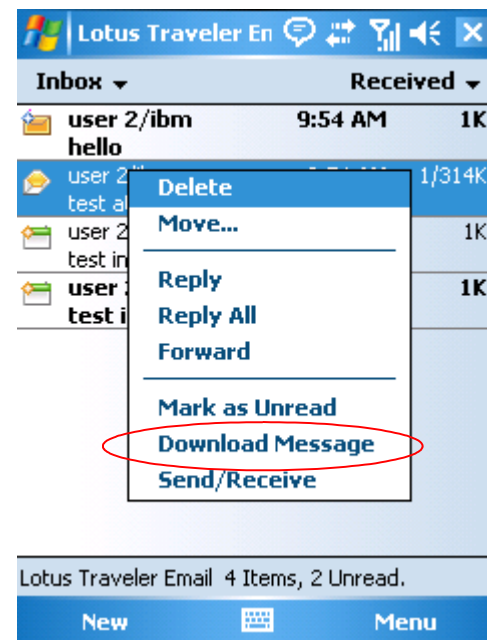
Windows Mobile - Registration

- When registration completes, Lotus Traveler is minimized to the application bar
- Lotus Traveler automatically starts whenever the device is reset
- On Smartphone, Traveler icon is present in the notification bar, but not on the today screen










Windows Mobile – Using the device

- Truncated messages indicated with a special icon, and a message inside the Email
- Retrieve truncated email messages using the Download Message option
- As with any change to your data on the device, synchronization is started in the background and the complete message body and any attachments are retrieved.



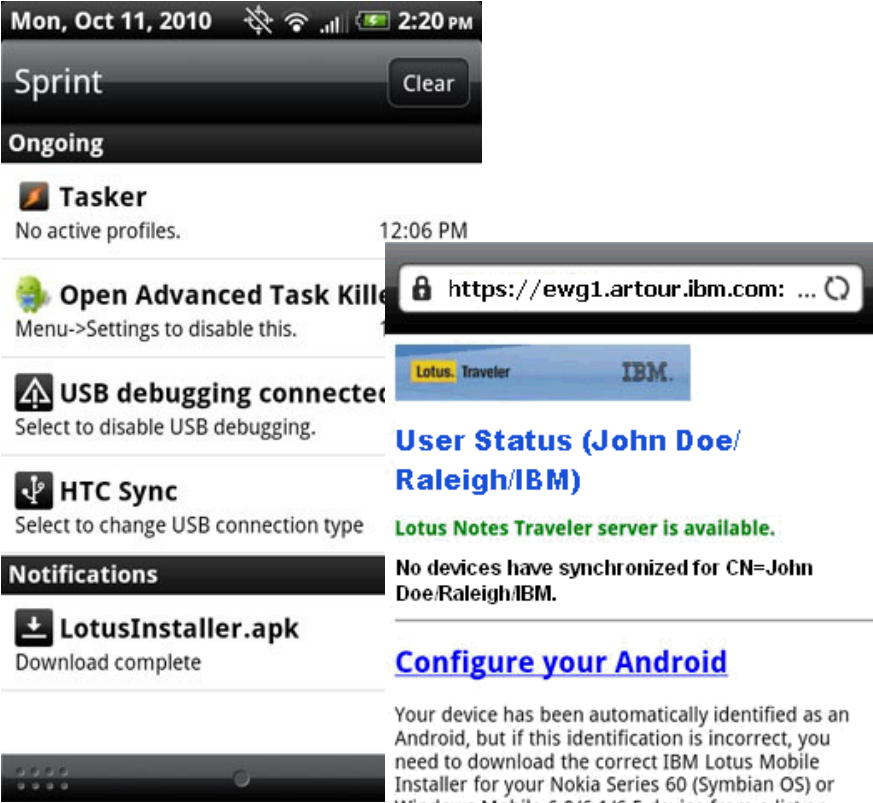
Windows Mobile – Invitations and Calendar notices

- Supports attendee and originator side invitations
- For attendee side actions, accept/decline/tentative actions are first synchronized to the server, action is taken, and resulting calendar entry is synchronized to the device

Icon	Description
	This signifies a new invitation to which your response is requested
	An information update to an existing meeting
	An existing meeting has been rescheduled to a new time and day and your response is requested
	An existing meeting has been canceled and your response is requested.
	An invitation that you have accepted and which the client is currently propagating the response to the chair.
	An invitation that you have declined and which the client is currently propagating the response to the chair.
	An invitation that has already been processed and has been added to your calendar, no further action is required.

How to Install Traveler – On Android

- Access your traveler server
`http://serverFQDN/servlet/traveler`
- Login with you username and HTTP password
- Download the lotus Notes Traveler client step by step



Mon, Oct 11, 2010 2:20 PM

Sprint Clear

Ongoing

Tasker
No active profiles. 12:06 PM

Open Advanced Task Killer
Menu->Settings to disable this. <https://ewg1.artour.ibm.com: ...>

USB debugging connected
Select to disable USB debugging.

HTC Sync
Select to change USB connection type

Notifications

LotusInstaller.apk
Download complete

Lotus. Traveler IBM.

User Status (John Doe/Raleigh/IBM)
Lotus Notes Traveler server is available.
No devices have synchronized for CN=John Doe/Raleigh/IBM.

Configure your Android

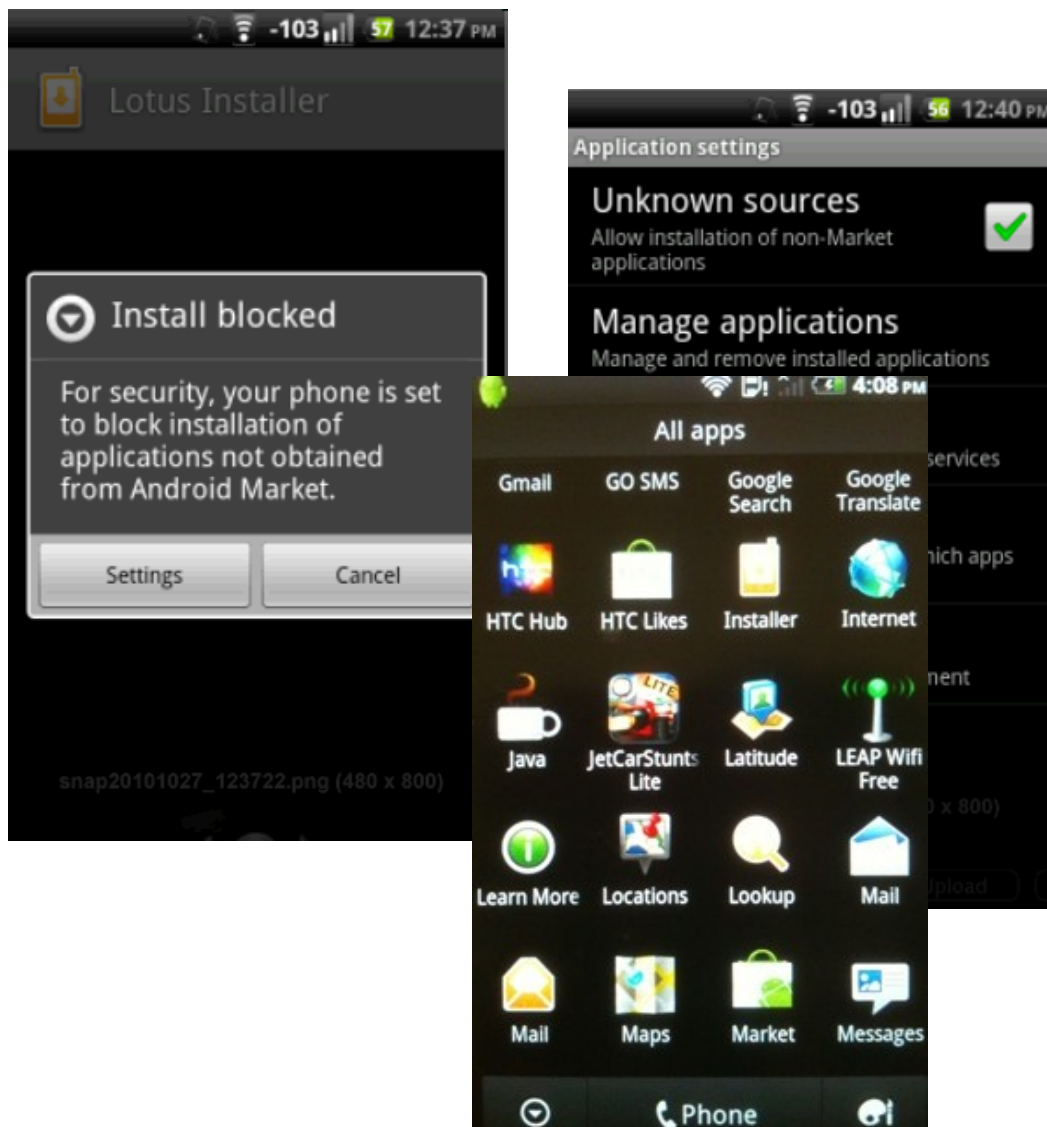
Your device has been automatically identified as an Android, but if this identification is incorrect, you need to download the correct IBM Lotus Mobile Installer for your Nokia Series 60 (Symbian OS) or Windows Mobile 6.0/6.1/6.5 device from a list or generate an Apple Profile for your Apple iPhone/iPod Touch/iPad device.
[Select an IBM Lotus Mobile Installer.](#)
[Generate an Apple Profile.](#)

Manage the Notes ID

Your Notes ID, a file that your administrator creates, allows you to encrypt, decrypt, and sign documents.

How to Install Traveler – On Android

- If Lotus Installer blocked, Select the Settings button from the pop-up message and select the checkbox to allow "Unknown sources"
- Lotus Installer will be downloaded firstly
- Then Installer will download the Notes Traveler
- Follow the instructions step by step to install Traveler



How to Uninstall Traveler

- Iphone

General -> Profile -> Remove

- Andriod - [http://www-](http://www-10.lotus.com/ldd/dominowiki.nsf/dx/How_do_I_uninstall_the_client_on_an_Android_device_LNT8521)

[10.lotus.com/ldd/dominowiki.nsf/dx/How_do_I_uninstall_the_client_on_an_Android_device_LNT8521](http://www-10.lotus.com/ldd/dominowiki.nsf/dx/How_do_I_uninstall_the_client_on_an_Android_device_LNT8521)

- Nokia - [http://www-](http://www-10.lotus.com/ldd/dominowiki.nsf/dx/How_do_I_uninstall_the_client_on_a_Nokia_device_LNT8521)

[10.lotus.com/ldd/dominowiki.nsf/dx/How_do_I_uninstall_the_client_on_a_Nokia_device_LNT8521](http://www-10.lotus.com/ldd/dominowiki.nsf/dx/How_do_I_uninstall_the_client_on_a_Nokia_device_LNT8521)

- Windows Mobile - [http://www-](http://www-10.lotus.com/ldd/dominowiki.nsf/dx/How_do_I_uninstall_the_client_on_a_Windows_Mobile_device_LNT8521)

[10.lotus.com/ldd/dominowiki.nsf/dx/How_do_I_uninstall_the_client_on_a_Windows_Mobile_device_LNT8521](http://www-10.lotus.com/ldd/dominowiki.nsf/dx/How_do_I_uninstall_the_client_on_a_Windows_Mobile_device_LNT8521)

References

➤ 8.0.x and 8.5.1 Inforcenter

[Http://publib.boulder.ibm.com/infocenter/domhelp/v8r0/index.jsp?topic=/com.ibm.help.Int.doc/LNT_overview.html](http://publib.boulder.ibm.com/infocenter/domhelp/v8r0/index.jsp?topic=/com.ibm.help.Int.doc/LNT_overview.html)

➤ 8.5.2 Wiki

<http://www-10.lotus.com/ldd/dominowiki.nsf/xpViewCategories.xsp?lookupName=Lotus%20Notes%20Traveler%208.5.2%20Documentation>

➤ Lotus Notes Traveler Product Page

<http://www.ibm.com/lotus/lotusnotestraveler>

➤ Latest Recommended Fixes

<http://www-01.ibm.com/support/docview.wss?rs=475&uid=swg24019529>

Questions ?

Thank You