

应用开发利器

IBM Bluemix平台云介绍

黄英杰

IBM Bluemix Practice Leader, GCG
13530613222
yingkitw@hk1.ibm.com





关于Bluemix的一些数字

15亿+ 每天API调用数

Nov 2014

100万+ 用户

June 2014

Bluemix Dedicated
London Region
70 services

35 services
New pricing structure

Feb 2014

Public PaaS
5 Services

全球最大

Cloud Foundry, OpenStack,
and Native Container
public deployment

180,000+ 每月新增承载应用数

Feb 2015

Virtual Machines
Containers
100+ services



Today

Bluemix Local
140+ services



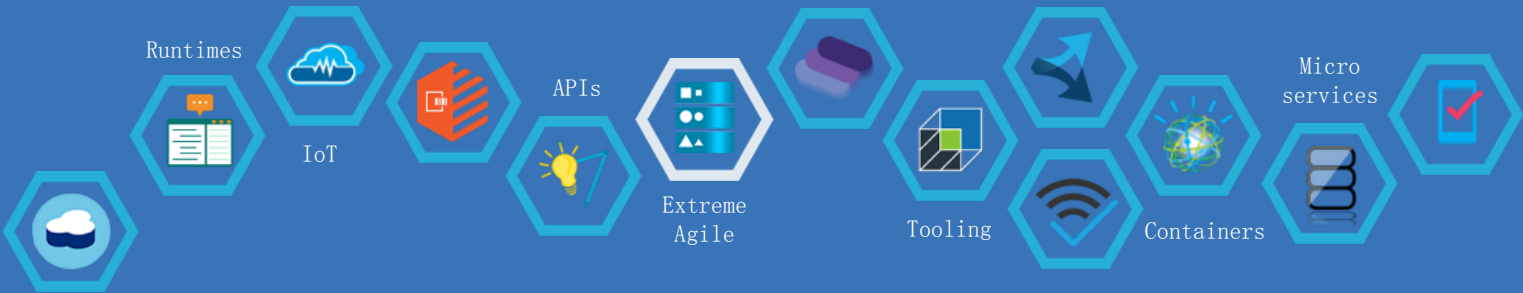
创新提速

“Two guys in a Starbucks can have access to the same computing power as a Fortune 500 company.”

Jim Deters - Founder, Galvanize



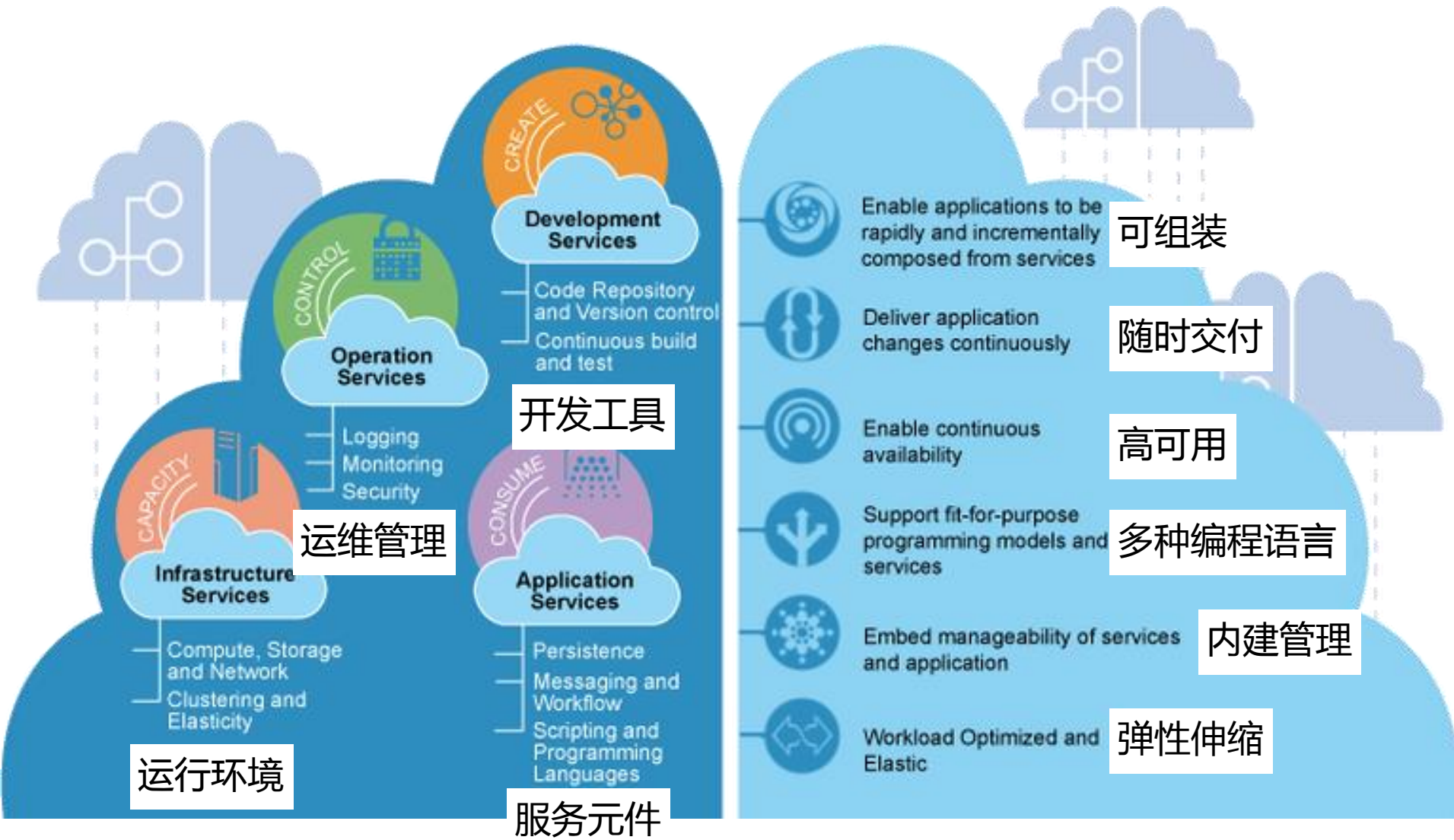
IBM



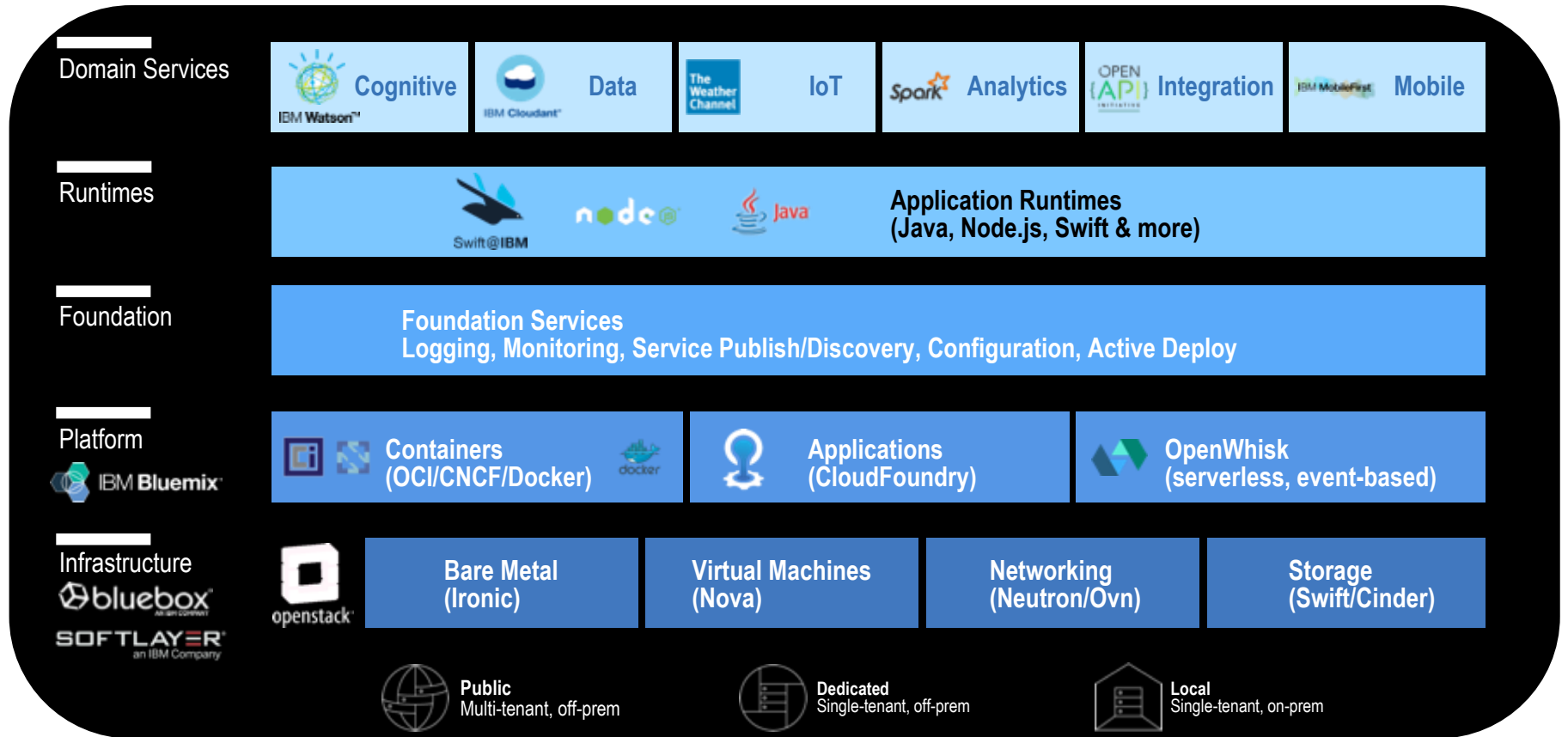
Bluemix的定位=速度与想象



Bluemix平台提供**运行环境**，**运维管理**，**开发工具**及**服务元件**能力。

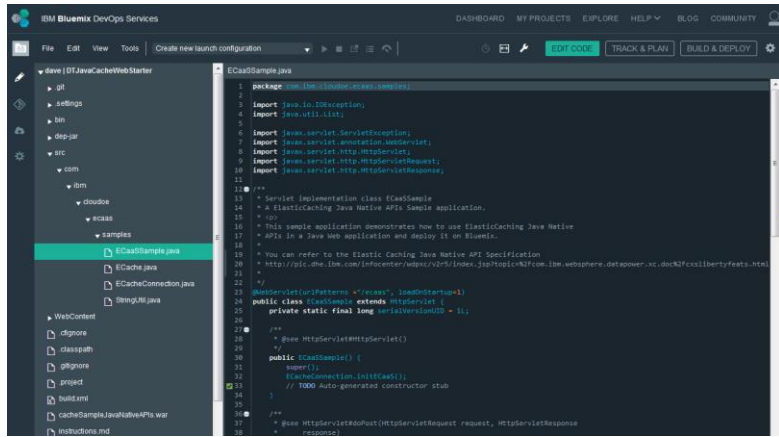


基于开放标准的IBM云架构

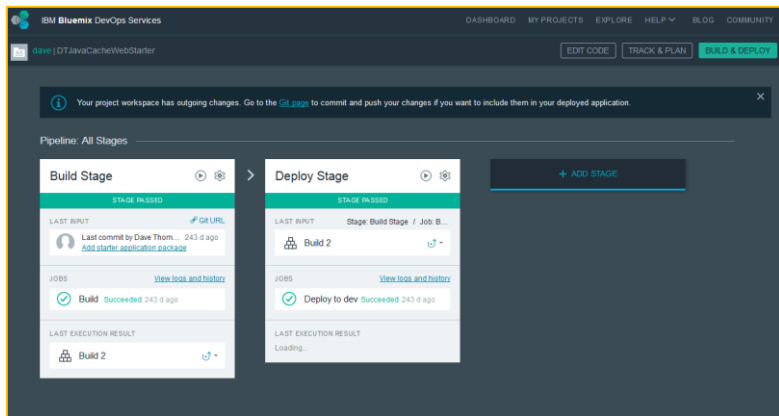


Bluemix提供完整开放的开发生态一体化（DevOps）服务

开放工具整合

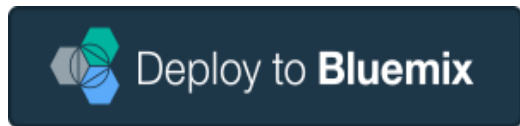
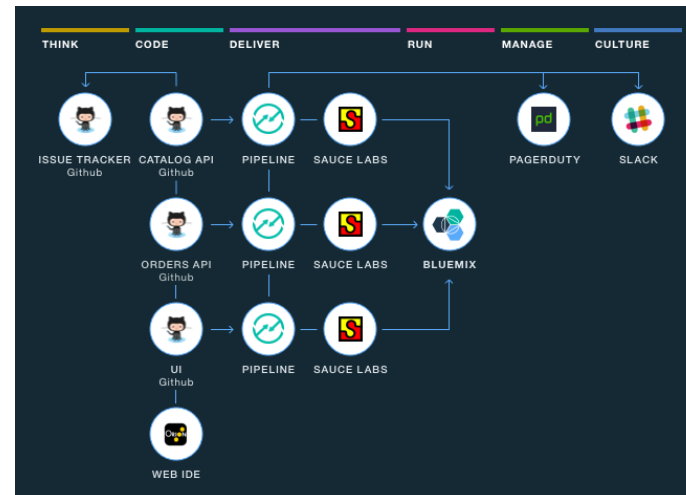
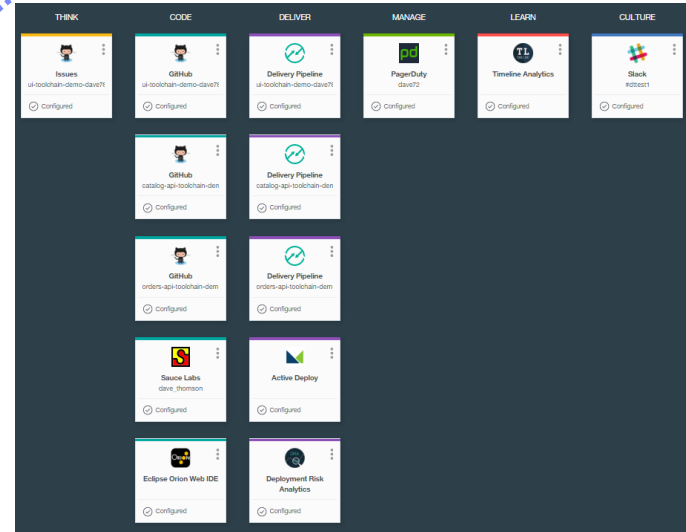


代码编辑&管控



持续集成&交付管道

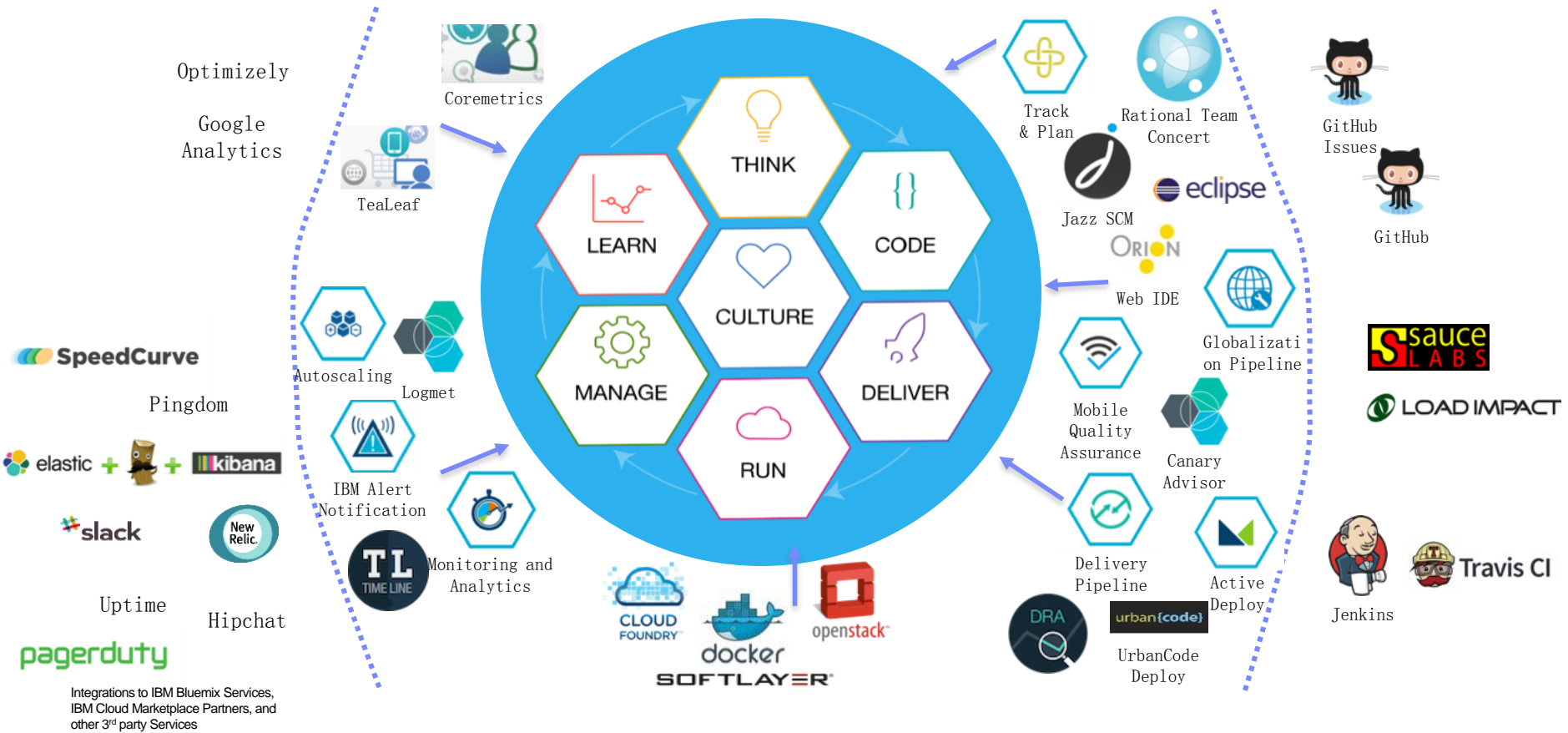
+



一键部署

开放而完整的开发工具链

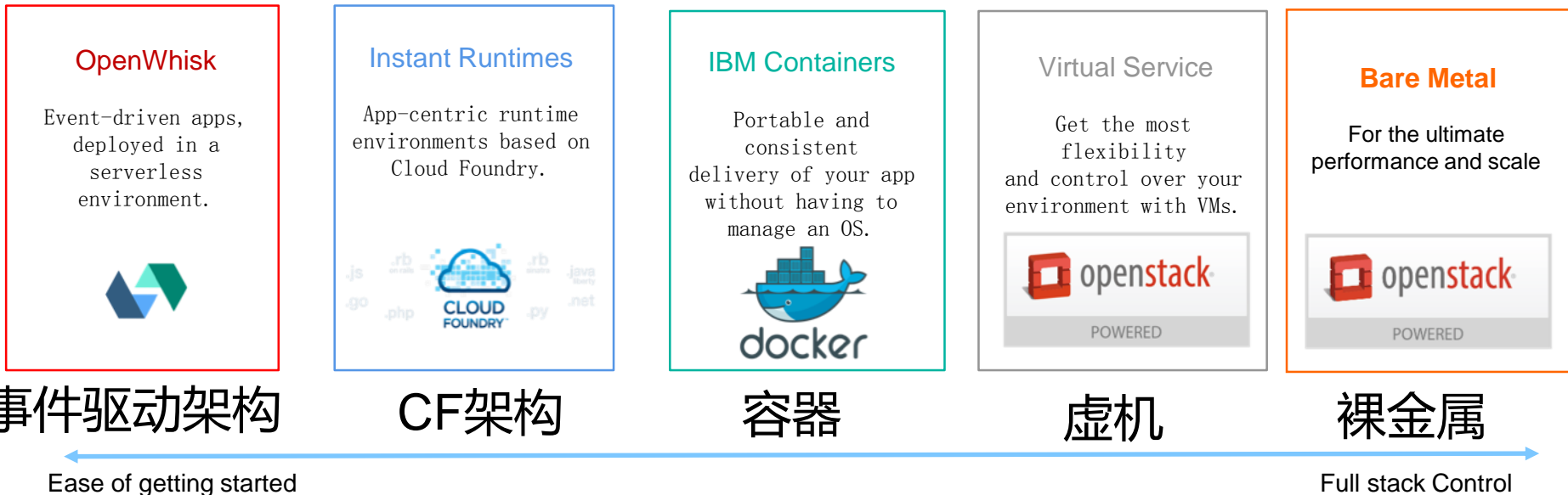
Rapidly setup and manage an integrated delivery toolchain following DevOps best practices

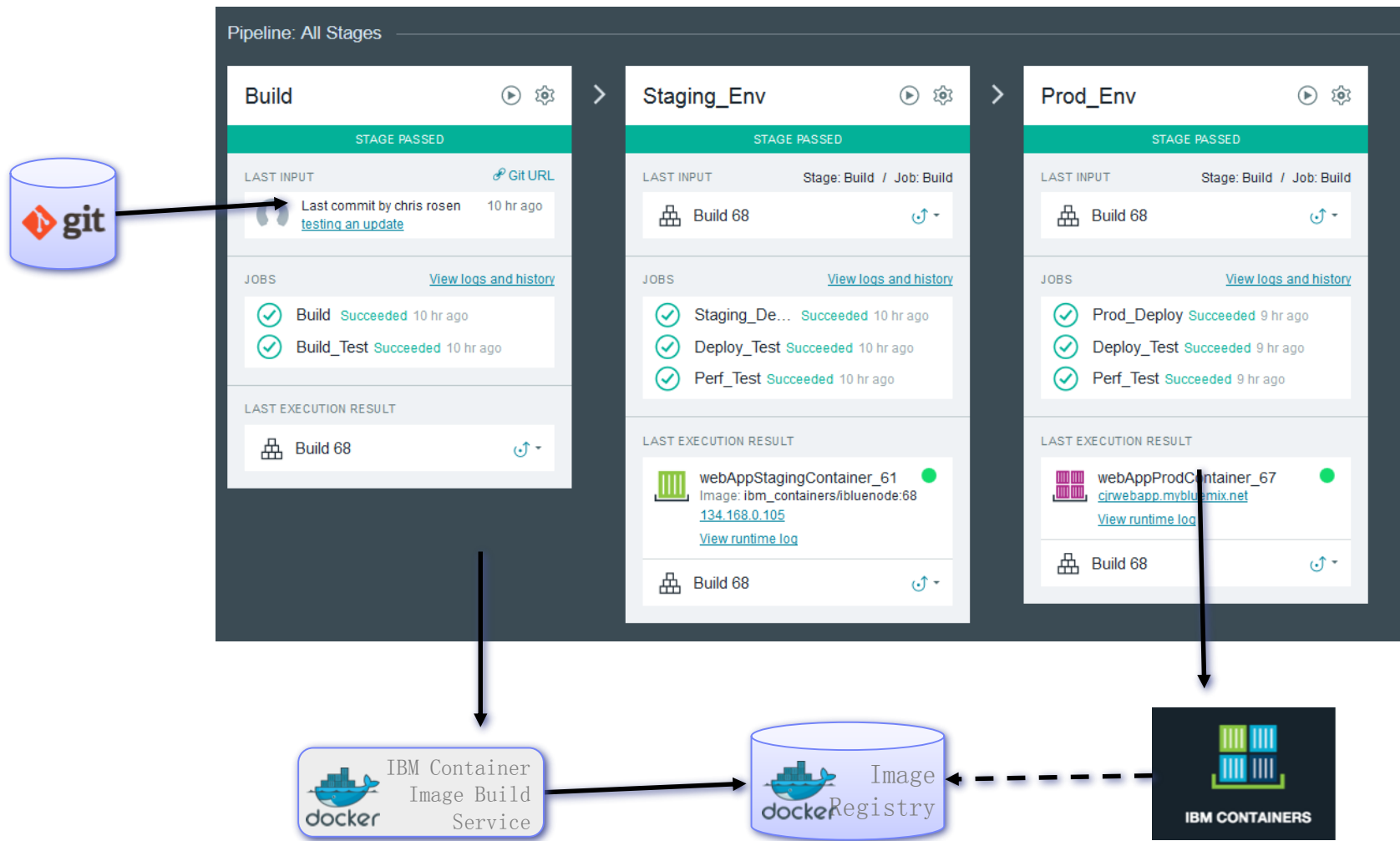


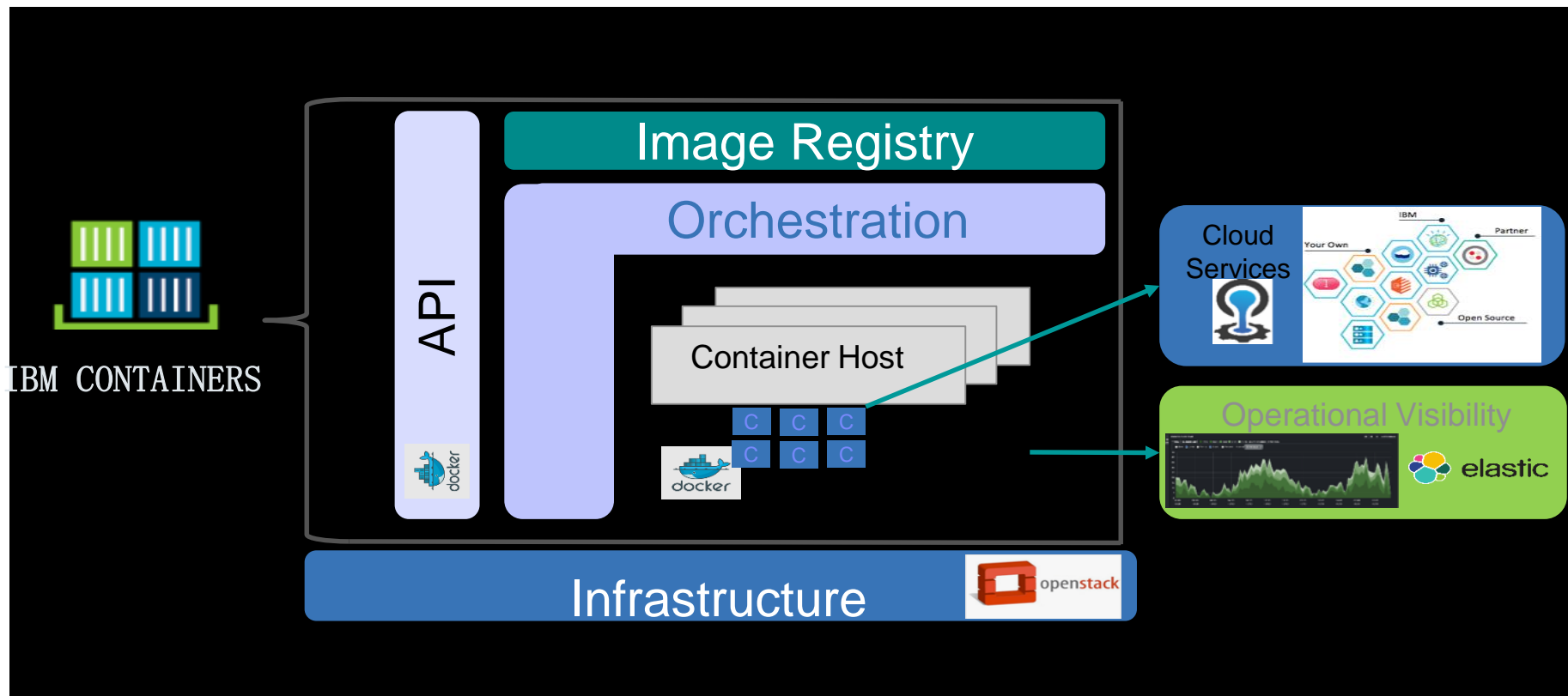
Bluemix提供从裸金属到事件驱动无服务器架构的计算选择

Build your apps, your way.

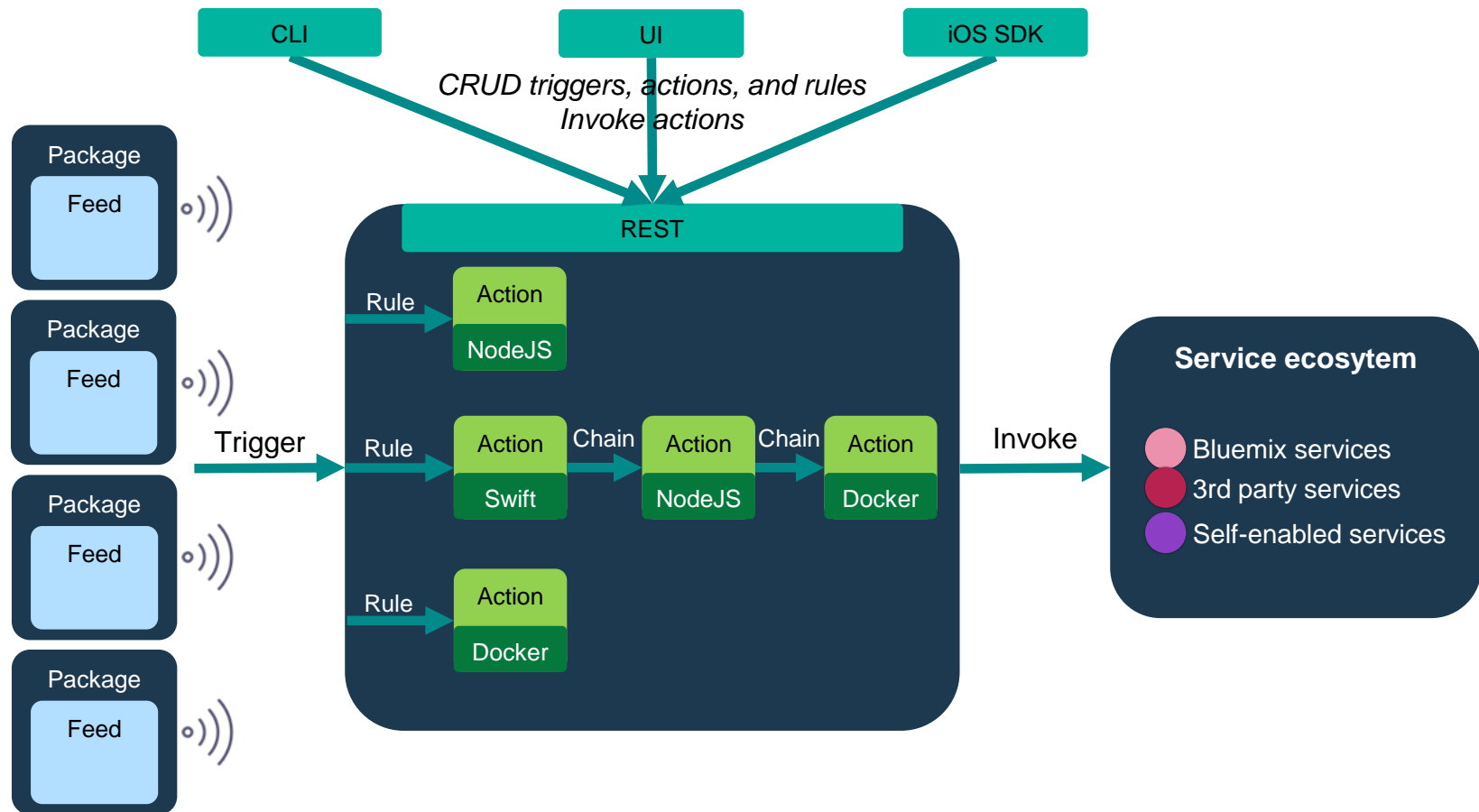
Use a combination of the most prominent open-source compute technologies to power your apps. Then, let Bluemix handle the rest.



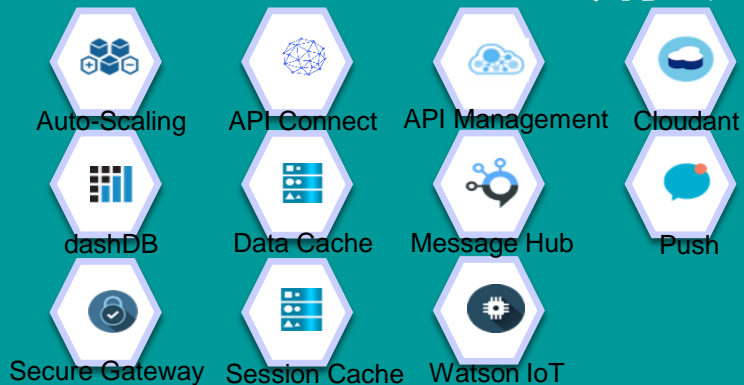




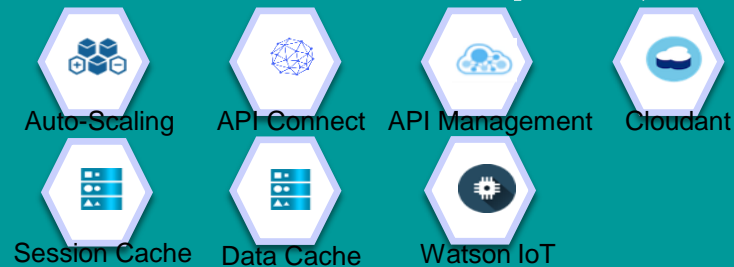
Bluemix提供事件驱动无服务器架构OpenWhisk



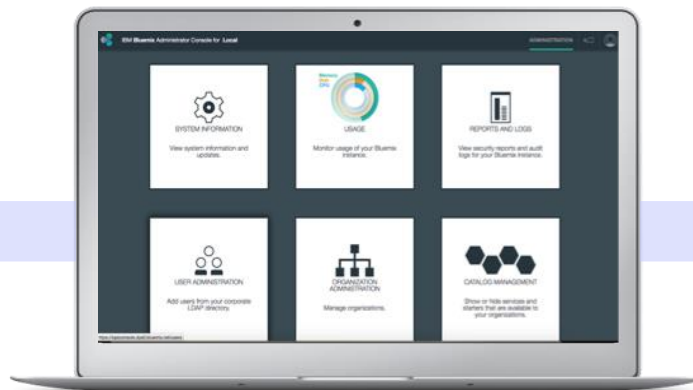
Bluemix Dedicated 专有云



Bluemix Local 本地云



Syndication Bluemix Public 公有云



Bluemix提供丰富的运维支持

平台与服务管理



服务目录管理



平台更新

监控管理

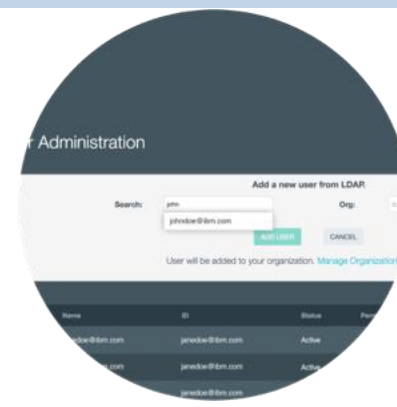


系统信息



报表与日志

权限管理



用户管理



容量管理

Bluemix服务元件 (2016八月)

计算

- Cloud Foundry Runtimes
- Docker Containers
- OpenStack Virtual Servers
- OpenWhisk

网络

- Auto-scaling
- Blockchain
- CDN
- Load Balancer for Containers, and Virtual Servers
- VPN

存储

- Block Storage
- Object Storage

移动

- IBM Push Notifications
- Mobile Analytics **
- Mobile App Builder ++
- Mobile App Content Manager
- Mobile Client Access
- Mobile Foundation
- Mobile Quality Assurance
- Presence Insights ++

认知

- AlchemyAPI
- Concept Insights ++
- Conversation
- Dialog
- Document Conversion
- Language Translation
- Natural Language Classifier
- Personality Insights
- Relationship Extraction ++
- Retrieve and Rank
- Speech to Text
- Text to Speech
- Tone Analyzer
- Tradeoff Analytics
- Visual Insights ++
- Visual Recognition

物联网

- Context Mapping
- Driver Behavior
- IoT Platform
- IoT for Automotive **
- IoT for Electronics
- IoT for Insurance
- IoT Real Time Insights
- IoT Workbench

大数据分析

- Analytics Exchange
- Apache Spark
- BigInsights for Apache Hadoop
- Cloudant NoSQL DB
- Compose RethinkDB **
- dashDB (D), dashDB Tx
- DataWorks
- Elasticsearch by Compose
- Embeddable Reporting
- Geospatial Analytics
- IBM DataStage on Cloud
- IBM DB2 on Cloud
- IBM Graph
- IBM Master Data Mgmt on Cloud
- Insights for Twitter
- MongoDB by Compose
- PostgreSQL by Compose
- Predictive Analytics
- Redis by Compose
- Streaming Analytics
- Weather Company Data
- Xpages NoSQL Database

安全

- Access Trail
- App Security on Cloud
- IBM Identity Mixer
- Key Protect
- Network Sec Groups-VMs
- Single Sign-On

DevOps

- Active Deploy
- Availability Monitoring **
- Auto-Scaling
- Automated Access. Tester
- Delivery Pipeline
- Deployment Risk Analytics **
- Digital Content Checker
- Globalization Pipeline
- IBM Alert Notification
- IBM Runbook Automation
- Integration Tester
- Monitoring & Analytics
- Pattern Engine **
- Track & Plan

应用

- Business Rules
- Data Cache
- Document Generation
- Message Hub
- Message Hub Incubator
- MQ Light
- Session Cache
- WebSphere App Server
- Workflow
- Workload Scheduler

整合

- API Connect
- API Harmony
- API Management ++
- Cloud Integration ++
- Connect & Compose
- Message Connect
- Secure Gateway
- Secure Broker
- Service Discovery
- Service Proxy

** New or changed service this month
 ++ Being retired this month

click Let's see it!



Get started now!



Welcome to Bluemix



All Categories



Compute



Network



Storage



Data & Analytics



Watson



Integrate



DevOps



Security



Application Services



Mobile



Internet of Things





APIs

认知相关服务




语言

 AlchemyLanguage	 Dialog	 Natural Language Classifier	 Relationship Extraction
 Concept Expansion	 Document Conversion	 Personality Insights	 Retrieve and Rank
 Concept Insights	 Language Translation	 Question and Answer	 Tone Analyzer

语音

 Speech to Text
 Text to Speech

视觉

 Alchemy Vision
 Visual Insights
 Visual Recognition

数据

 AlchemyData News
 Tradeoff Analytics

图像分析用例：判断汽车型号



<u>Classifier</u>	<u>Confidence Score</u>
Ford Mustang	99%



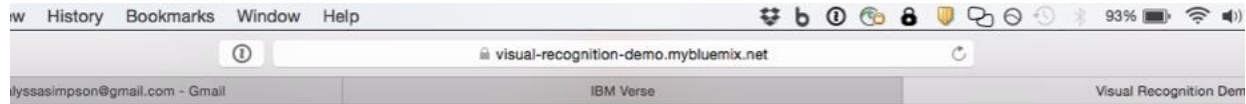
<u>Classifier</u>	<u>Confidence Score</u>
Car	88%



<u>Classifier</u>	<u>Confidence Score</u>
This image is not a match for Ford Mustang	



<u>Classifier</u>	<u>Confidence Score</u>
This image is not a match for Ford Mustang	



Create a Custom Classifier

2014 Mustang

Upload images to define your classifier. [What's a classifier?](#)

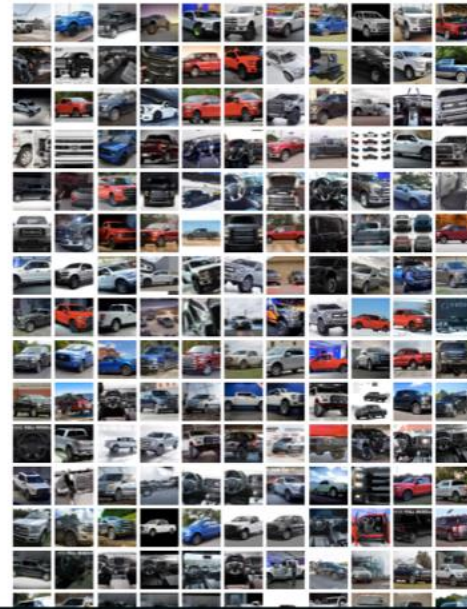
Positive Images

Select 50 or more images, or drag from your computer to define the classifier. More images will improve accuracy.



Negative Images

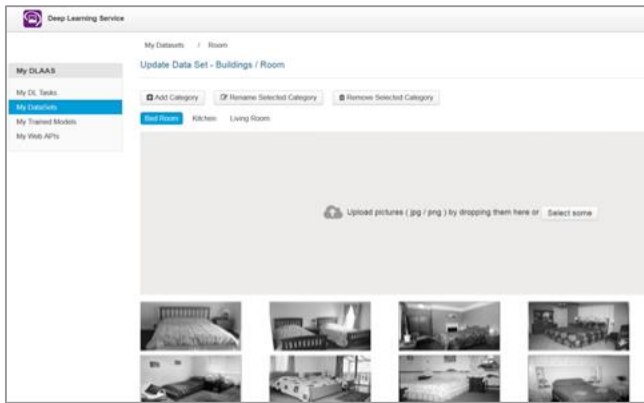
Select 50 or more images, or drag from your computer to define the classifier. More images will improve accuracy.



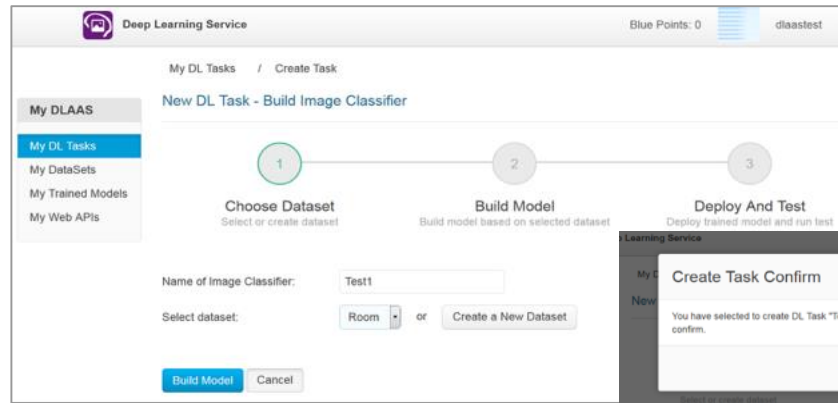
定制图像分类器服务：主要功能与能力

定制图像分类器服务自带Deep Learning Studio，提供用户训练模型管理、训练任务管理、训练数据集管理、及API管理一站式服务

1. 用户为新的图像分类器定义需要的分类类别及上传训练图片

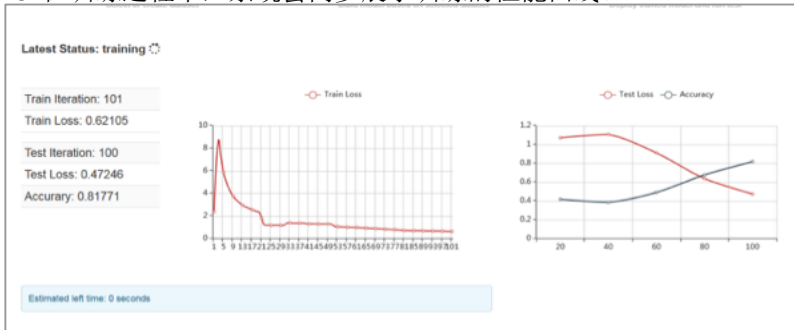


2. 进行模型训练

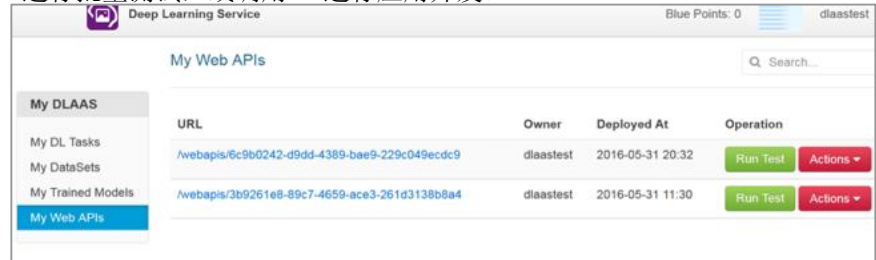


DL studio 会为用户估计所需要的训练时长。

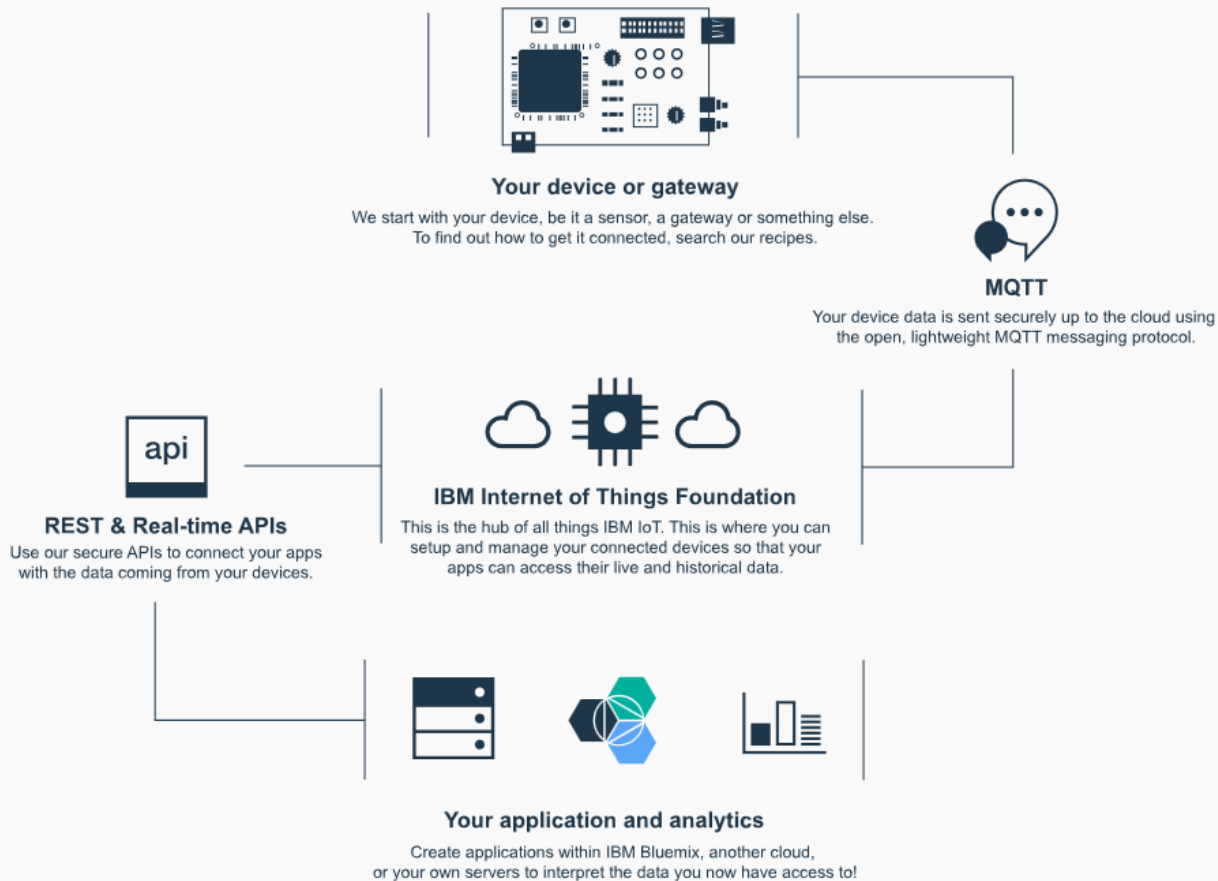
3. 在训练过程中，系统会同步展示训练的性能曲线。



4. 训练完成后，系统会自动部署模型对应的API服务。用户可以通过网页进行批量测试，或调用API进行应用开发。



将物联网引入的海量数据变现



IBM企业级区块链的技术特征



跨商业网络共享的,不可更改的,分布式交易记录系统



共享账本



智能合约

交易条款和交易状态内嵌在区块链系统中,驱动交易执行



隐私保护

保证共享账本适当的可见性; 保证交易是真实和可验证的

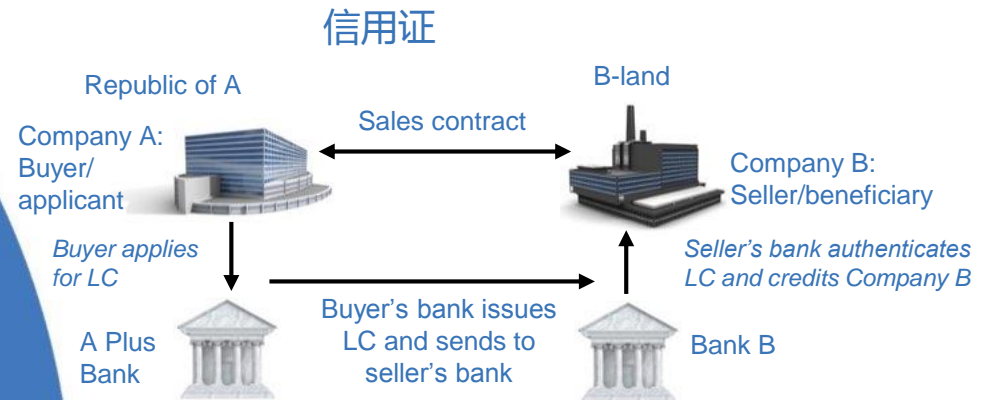


共识机制

所有参与者一致同意才意味着交易在网络中通过验证

更广泛的参与, 更低的沟通或集成成本, 更高的效率

区块链使用 场景举例：信用证



What

- 银行信用证 (LOC) 业务期望拓展到包括中小企等更广的用户群
- 现行方式受成本和执行时间制约

How

- 区块链可以为信用证业务提供共同账本
- 让交易各方拥有同一套已经验证的交易数据

优点

1. 提高执行速度 (小于一天)
2. 降低成本
3. 降低风险, e.g. 汇率波动
4. 增值服务, e.g. 增量付款

在Bluemix上搭建基于 超级账本（HyperLedger）的区块链应用



	<p>LINUX FOUNDATION HYPERLEDGER PROJECT</p>		<p>IBM Blockchain ON IBM CLOUD</p>		<p>IBM Blockchain SOLUTIONS</p>
--	---	--	--	--	-------------------------------------

BLUEMIX
SERVICE



Blockchain

IBM提供云管理服务
一键部署区块链网络
学习范例应用
开发智能合约

ibm.com/blockchain/



Bluemix 总结

- **Bluemix** 是**IBM**的超级云平台, 它提供全方位的**IaaS, PaaS**和**SaaS**能力, 更是集成业务服务的云平台.
- **Bluemix**提供了从**优化(Optimize)**到**连接(Connect)**再到**创造(Create)** 的企业未来拥抱云计算之路.



扫描二维码连线IBM云计算业务代表了解更多IBM云计算产品与技术



Thank
You