

Whitepaper

General Guidelines for Configuring GENTRAN:Director For Use with External AS2 or FTP Communications Software

By
Brian Jeffords

Last revised: 06/30/2006

Sterling Commerce
An IBM Company

The information contained in this document represents the current view of Sterling Commerce on the issue discussed as of the date of publication. Because Sterling Commerce must respond to changing market conditions, it should not be interpreted to be a commitment on the part of Sterling Commerce, and Sterling Commerce cannot guarantee the accuracy of any information presented after the date of publication.

This document is for informational purposes only. STERLING COMMERCE MAKES NO WARRANTIES, EXPRESSED OR IMPLIED, IN THIS DOCUMENT.

© 2000 Sterling Commerce. All rights reserved.

TABLE OF CONTENTS

<i>Purpose</i>	2
<i>Information needed before beginning</i>	2
<i>Solution Steps</i>	3

Purpose

The purpose of this document is to give general guidelines to those wishing to use external communications software for data sending and retrieval while still utilizing GENTRAN:Director as their EDI translator. This document provides instructions for using Batch Files and Process Control to automate the translation processes resulting from external communications.

NOTE: Though this document is written with AS2 and FTP in mind, the setup processes apply to any external communications software.

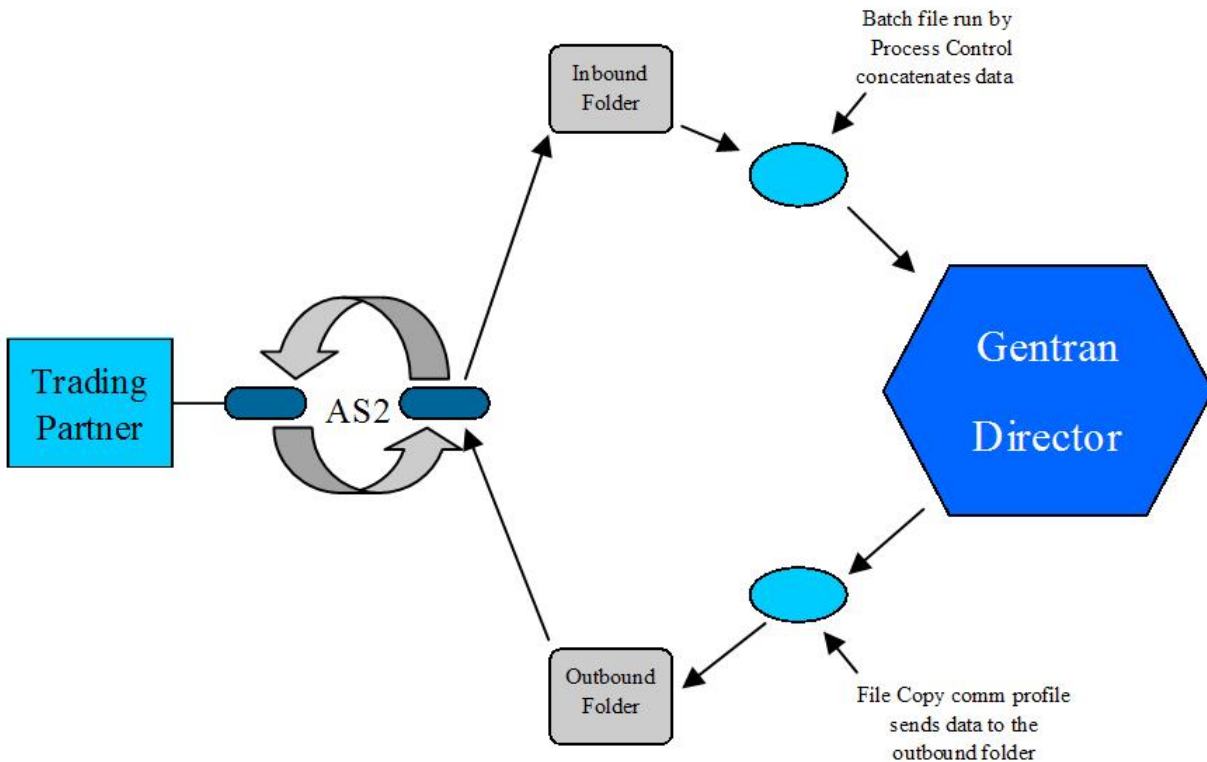
Information needed before beginning

You will need a few pieces of information before we get started

1. The full path to the directory in which your communications software looks for outbound data
2. The full path to the directory in which your communications software places inbound data
3. The full path to the directory in which you would like to store a backup of your inbound data (not required but recommended)
4. The full path to the directory in which you would like to store your batch file scripts (C:\Scripts or something simple)

Note: You will see folder and file names in this document that refer to AS2 or FTP communications. Note that you may substitute these default names with your own.

Flowchart of Data Movement in AS2/FTP Setup



Solution Steps

Writing the Batch Files

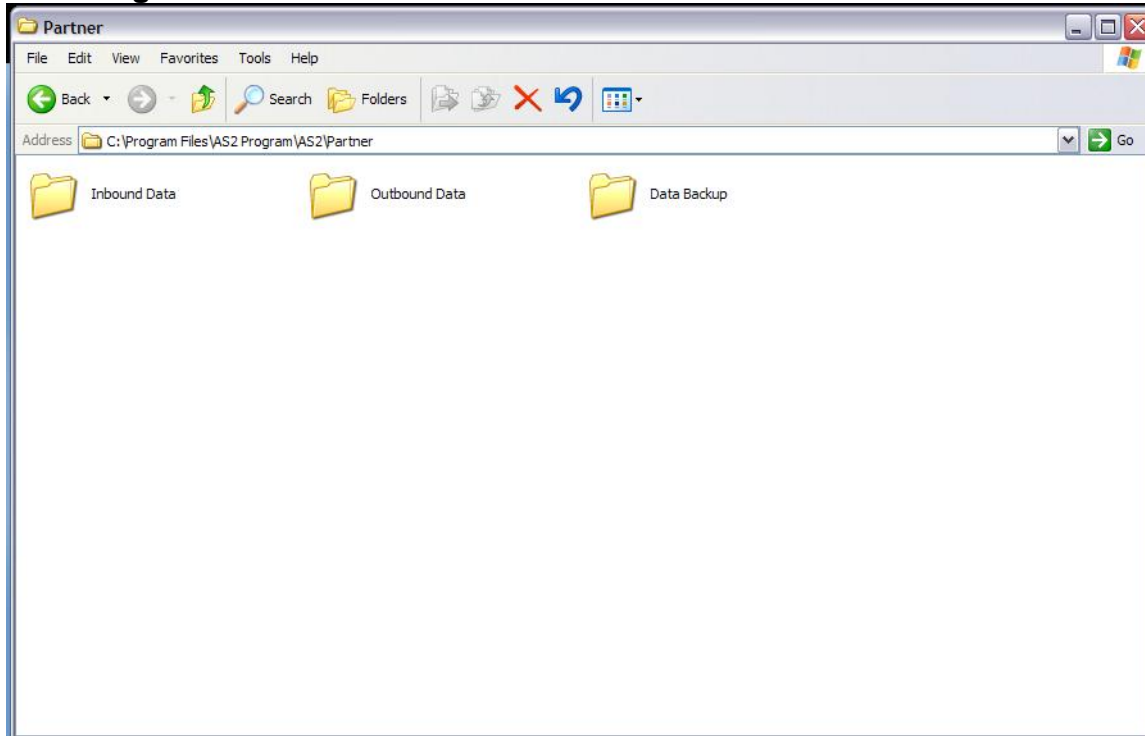
GENTRAN:Director has the ability to process EDI files that it has not received through its own communications package. However, it can only process a single file at a time and that file must have a static file name. Most FTP or AS2 communications packages create multiple files with variable file names so we must take those files and concatenate them into a single file with a static name. This is where our batch files come in. Note that Director innately supports POP3, Async, and Bisync dialup as well as TCP/IP via its internal Communicator.

A Batch file is nothing more than a file that executes a series of commands automatically. These Batch file commands are critical for processing data received outside of Communicator. In this case it will be copying the data, moving the data and deleting the data.

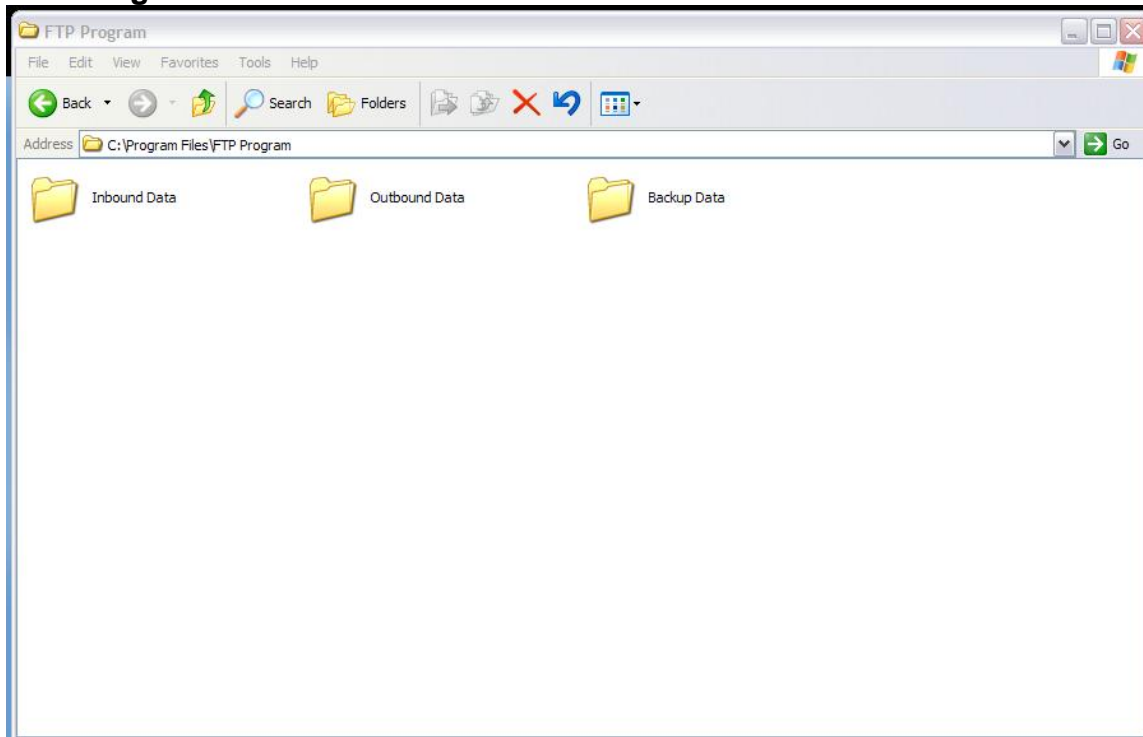
Phase 1

In order to formulate your batch files you will first need to determine the structure and flow of your inbound and outbound data. Normally the file structure will look something like the pictures below. Two sample paths (see the Address bar below) have been included for those using external AS2 and FTP communications software. However, other paths are possible depending on the external communication software in use. Note that the subfolders shown below (Inbound Data, Outbound Data, and Data Backup) should be created in nearly all circumstances.

AS2 Program Folders



FTP Program Folders



Phase 2

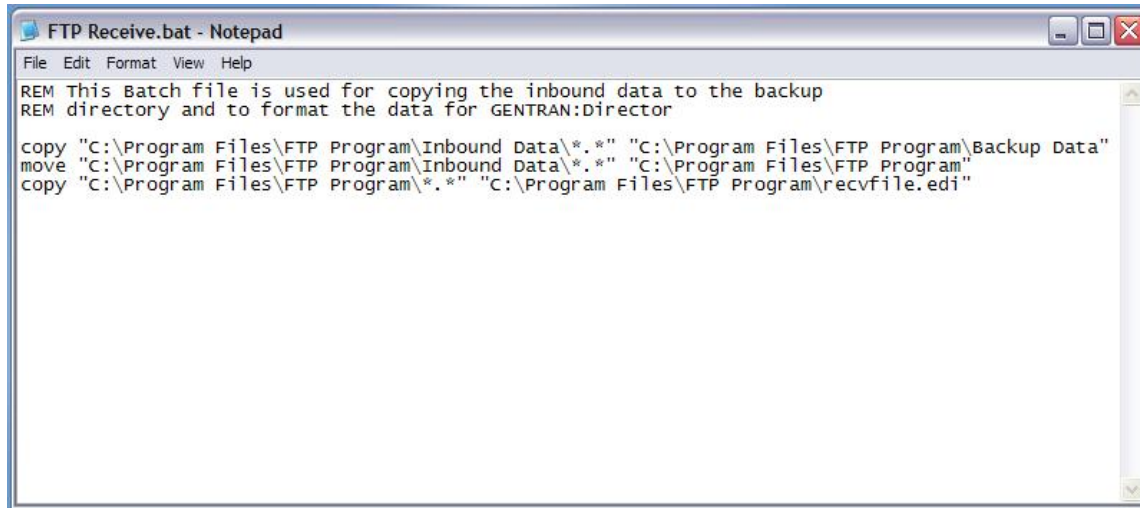
Now that we have created a folder structure for the inbound and outbound data, the batch files to automate the transfer of data into and out of the folders can be written. There are at least two batch files that need to be written. One to copy the data to the backup director and to format the data for use by GENTRAN:Director and a second to actually delete the data that has already been translated.

To write any batch file we will need to use a simple text editor. In our example, we will use Notepad.

- 1) Click on your Start menu in Windows
- 2) Go to Programs
- 3) Go to Accessories
- 4) Click on "Notepad"

Once Notepad is opened we can begin typing the batch file commands. Below you will find two sample batch files based on the file structure in the pictures above:

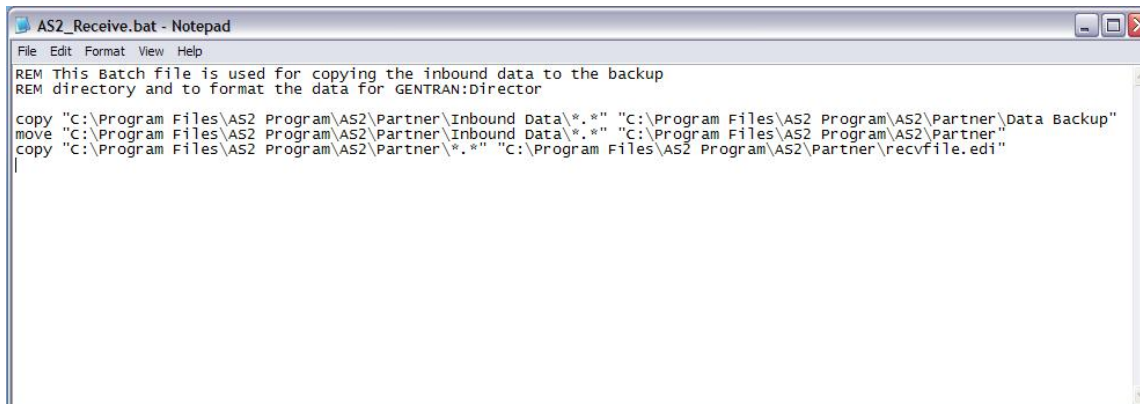
FTP Receive.bat



```
FTP Receive.bat - Notepad
File Edit Format View Help
REM This batch file is used for copying the inbound data to the backup
REM directory and to format the data for GENTRAN:Director

copy "C:\Program Files\FTP Program\Inbound Data\*.*)" "C:\Program Files\FTP Program\Backup Data"
move "C:\Program Files\FTP Program\Inbound Data\*.*)" "C:\Program Files\FTP Program"
copy "C:\Program Files\FTP Program\*.*)" "C:\Program Files\FTP Program\recvfile.edi"
```

AS2 Receive.bat



```
AS2_Receive.bat - Notepad
File Edit Format View Help
REM This batch file is used for copying the inbound data to the backup
REM directory and to format the data for GENTRAN:Director

copy "C:\Program Files\AS2 Program\AS2\Partner\Inbound Data\*.*)" "C:\Program Files\AS2 Program\AS2\Partner\Data Backup"
move "C:\Program Files\AS2 Program\AS2\Partner\Inbound Data\*.*)" "C:\Program Files\AS2 Program\AS2\Partner"
copy "C:\Program Files\AS2 Program\AS2\Partner\*.*)" "C:\Program Files\AS2 Program\AS2\Partner\recvfile.edi"
```

As seen in the images above, we are copying all files from the inbound data directory into the backup directory, moving the files from the inbound data directory to the next highest directory level and then copying all the files into a single file named “recvfile.edi”.

The lines at the beginning of the file begin with REM. These are simply descriptive lines that will be ignored. They are included so that anyone that opens the file understands the purpose of the batch file.

The first command issued is a “copy” command.

copy “directory containing data” “directory in which to copy data”

The second command is “move”.

move “directory containing data to be moved” “directory in which to move data”

Gentran:Director for Windows

The final command is another “copy”.

copy “directory containing data” “directory and filename to which the data is copied”

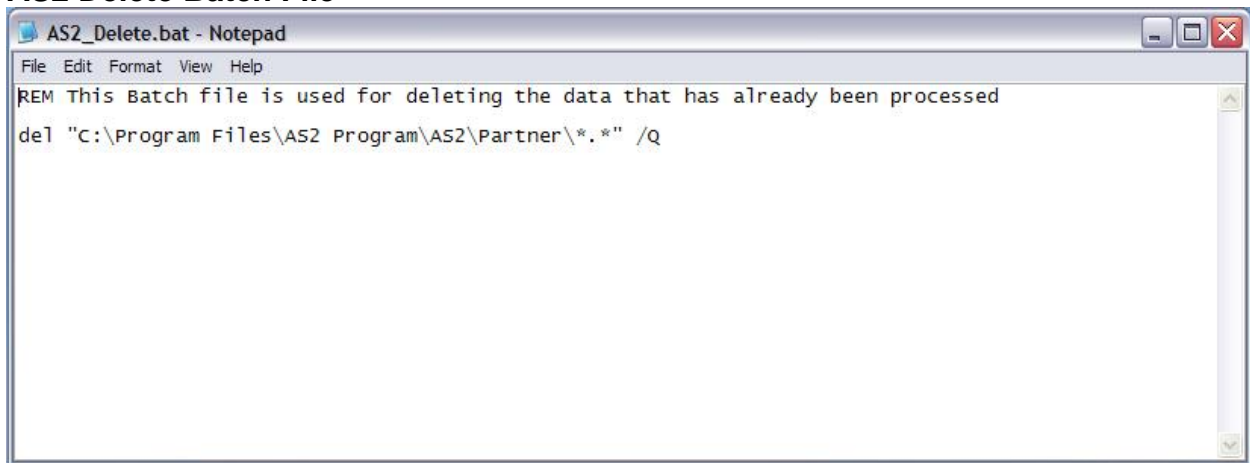
The commands being issued are the same for both FTP and AS2. The only difference is the directory structure listed.

The second batch file that you will need is used to delete the data from the previous receive session.

del “directory containing data*.*” /Q

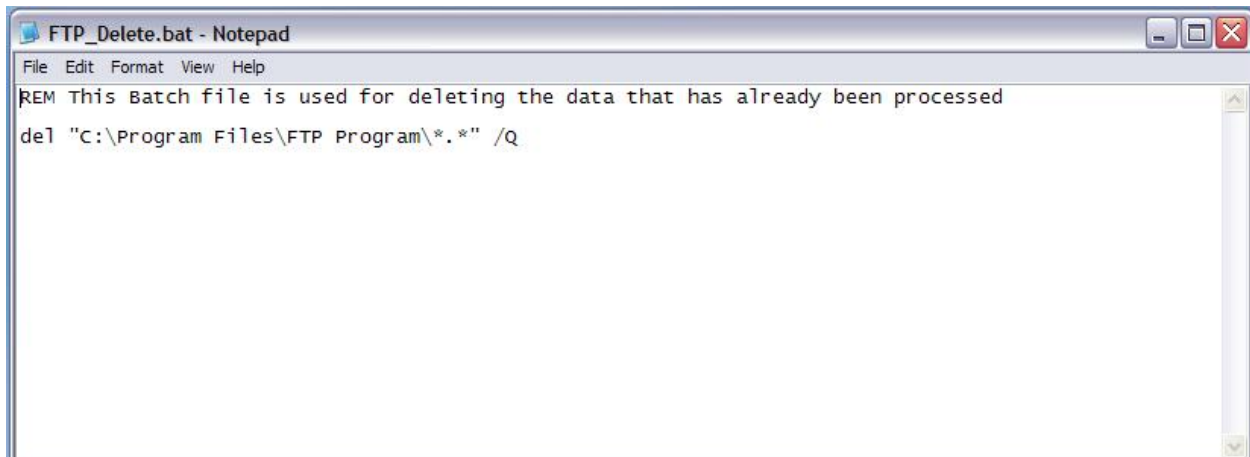
The /Q command uses quiet mode. Without this switch you would be prompted to answer Yes or No when deleting multiple files. See examples below.

AS2 Delete Batch File



```
AS2_Delete.bat - Notepad
File Edit Format View Help
REM This batch file is used for deleting the data that has already been processed
del "c:\Program Files\AS2 Program\AS2\Partner\*.*)" /Q
```

FTP Delete Batch File



```
FTP_Delete.bat - Notepad
File Edit Format View Help
REM This batch file is used for deleting the data that has already been processed
del "c:\Program Files\FTP Program\*.*)" /Q
```

Gentran:Director for Windows

NOTE: The batch files you create should be stored in a neutral location on your C: drive. We recommend creating a folder called Scripts on your C: drive and placing all 3 of your batch files there.

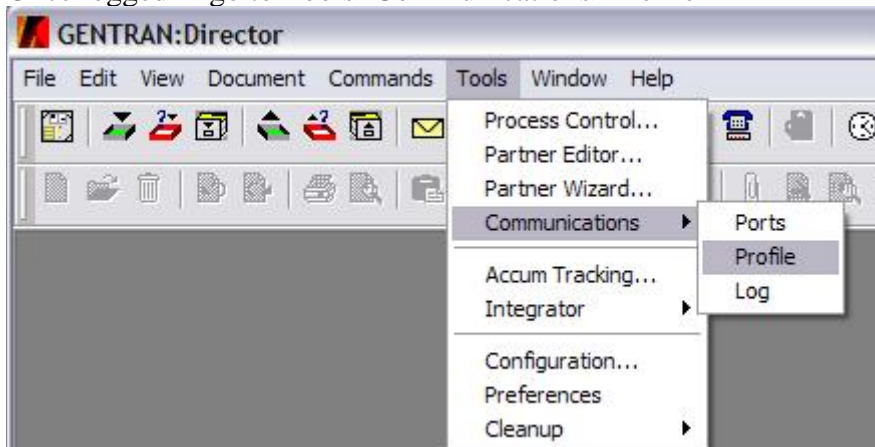
Configuring GENTRAN:Director

Once the batch files are completed and saved we can proceed to setup GENTRAN:Director to activate the batch files and process the inbound and outbound data automatically

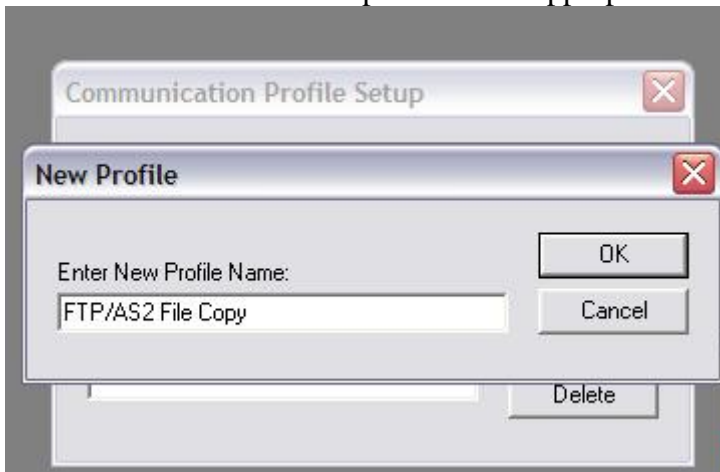
Phase 1- Sending Outbound Data from Director into your Communications Software

Open GENTRAN:Director and login with a user that has full permissions to create Communications Profiles and Process Control sessions and events.

Once logged in go to Tools>Communications>Profile

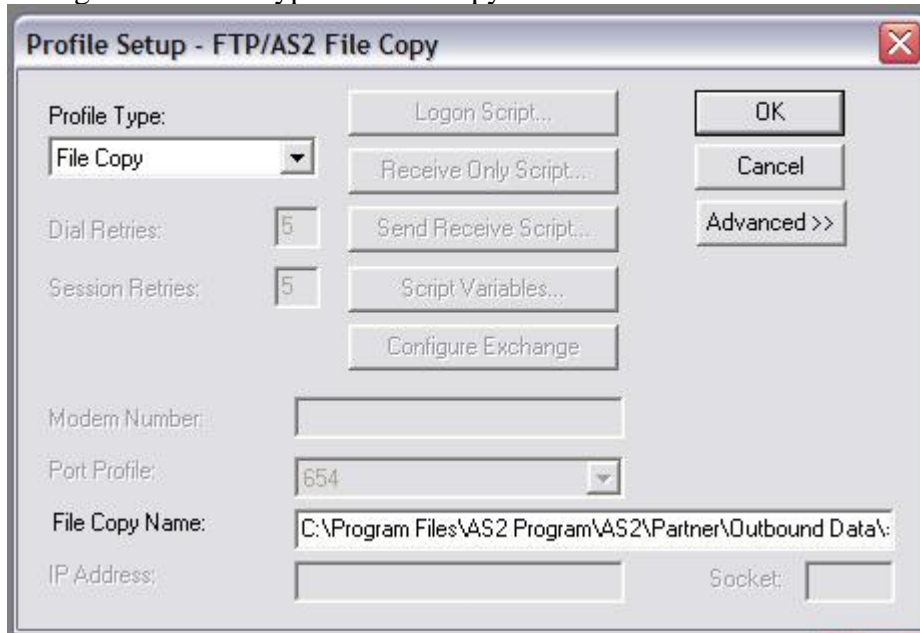


Select "New" and enter the profile name appropriate for your setup.



Click ok.

Change the Profile Type to “File Copy”



In the field marked “File Copy Name” enter the path and filename that will be created when you send the data to your AS2 or FTP software.

For AS2 users the path should resemble

“C:\Program Files\AS2 Program\AS2\Partner\Outbound Data\sendfile.edi”

For FTP users the path should resemble

“C:\Program Files\FTP Program\Outbound Data\sendfile.edi”

NOTE: Your AS2 or FTP communications software will need to be configured to look for this file when it is performing its send function.

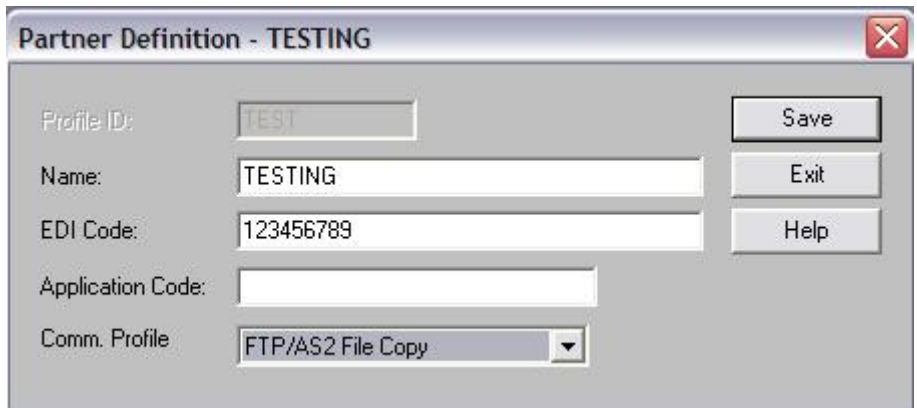
Once that information is entered click OK and Close to finish the Communications Profile setup.

In order for GENTRAN:Director to use a Communications Profile it must be associated with a Partner.

Open the Partner Editor (Tools>Partner Editor)

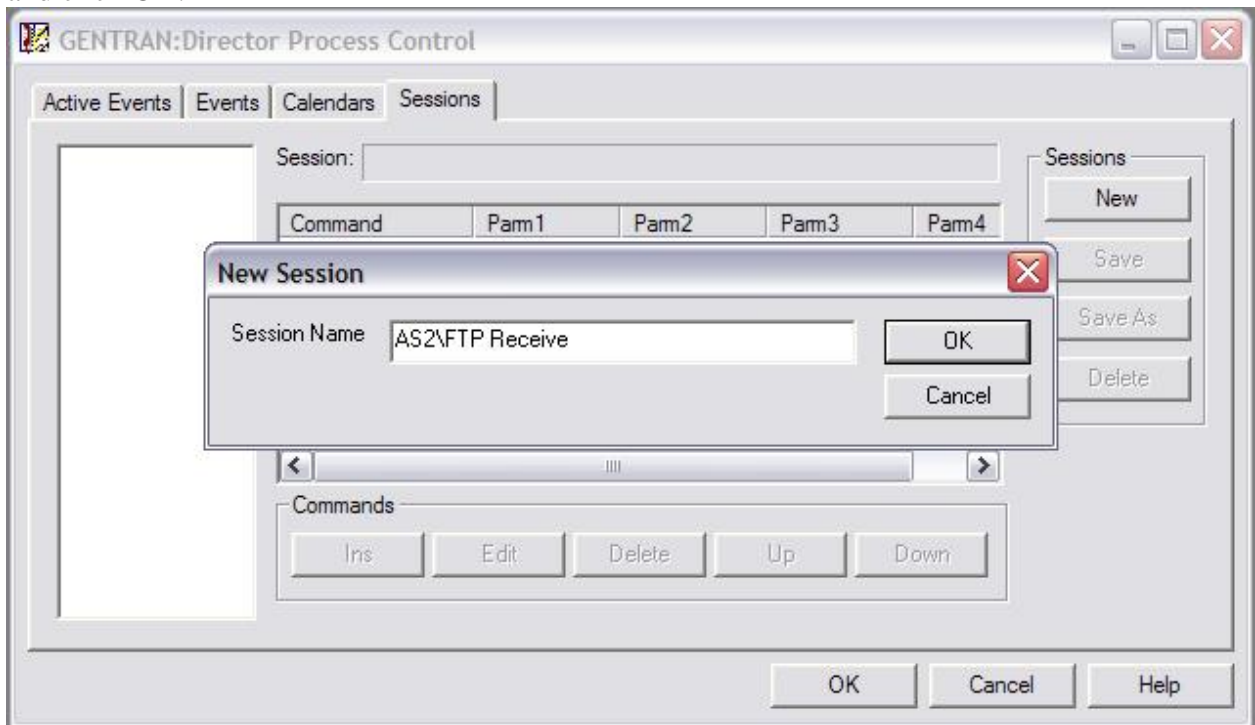
Highlight the partner whose data you would like to send via your AS2/FTP communications software and click “Edit”

Select the newly created communications profile from the drop down list and then click SAVE.



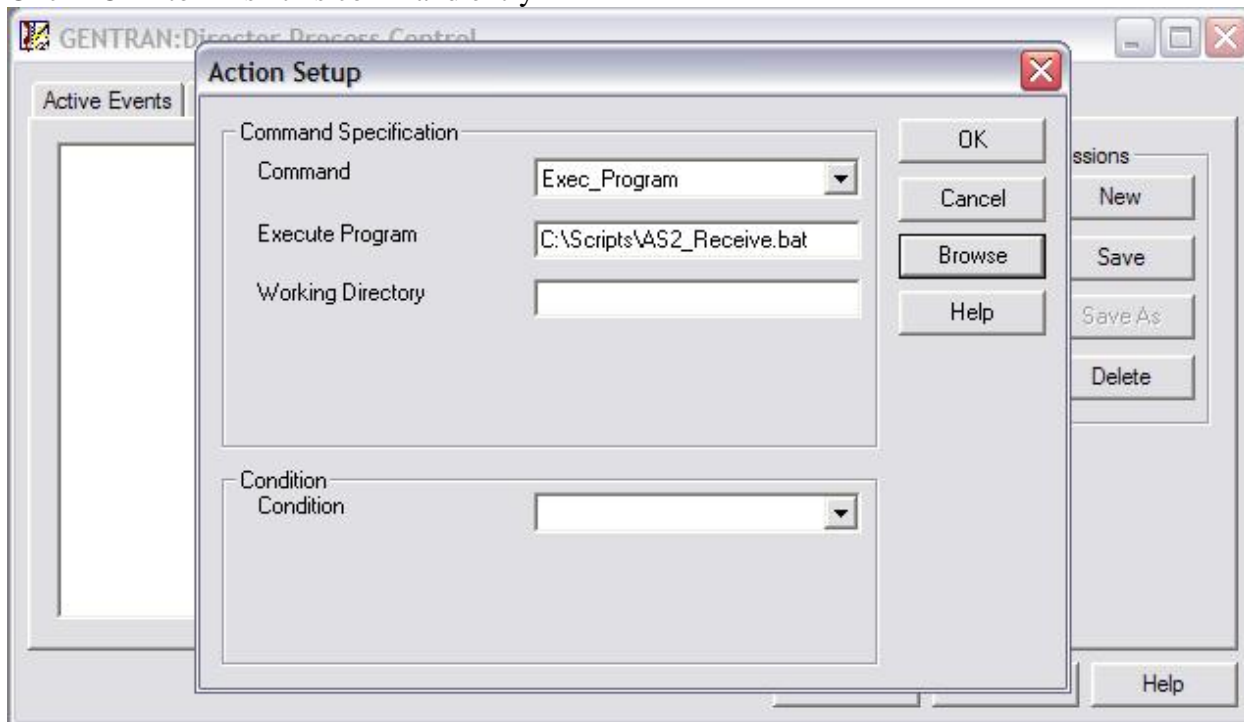
Phase 2- Configuring Process Control to run the batch files and process inbound data

In Director, open Process Control and go to the Sessions tab. Click "New" and give the session an appropriate name like "AS2 Receive" or "FTP Receive" and click OK.



Gentran:Director for Windows

In the “Commands” line of buttons at the bottom of the Process Control window click “Ins”.
From the “Command” drop down menu select “Exec Program”
Click the “Browse” button and locate the receive batch file you created earlier and click open.
The Working Directory may be left blank.
Click “OK” to finish this command entry

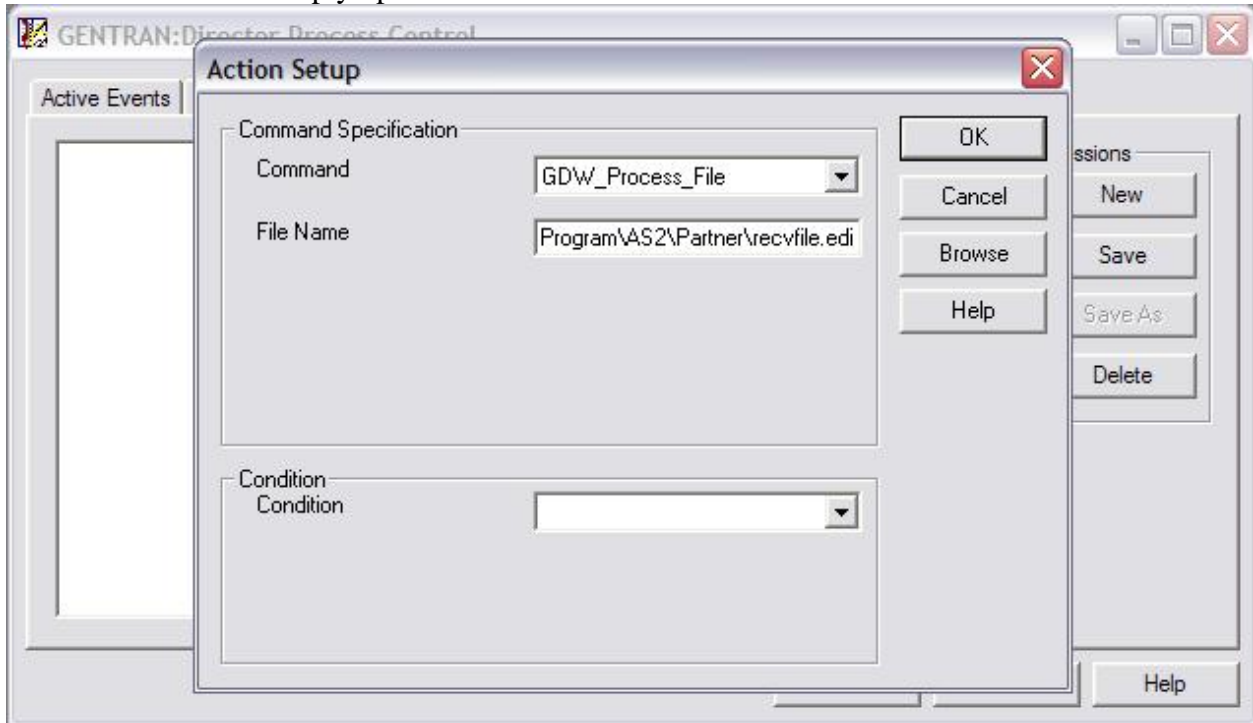


Gentran:Director for Windows

In the “Commands” line of buttons at the bottom of the Process Control window click “Ins” again.

From the “Command” drop down menu select “GDW_Process_File”

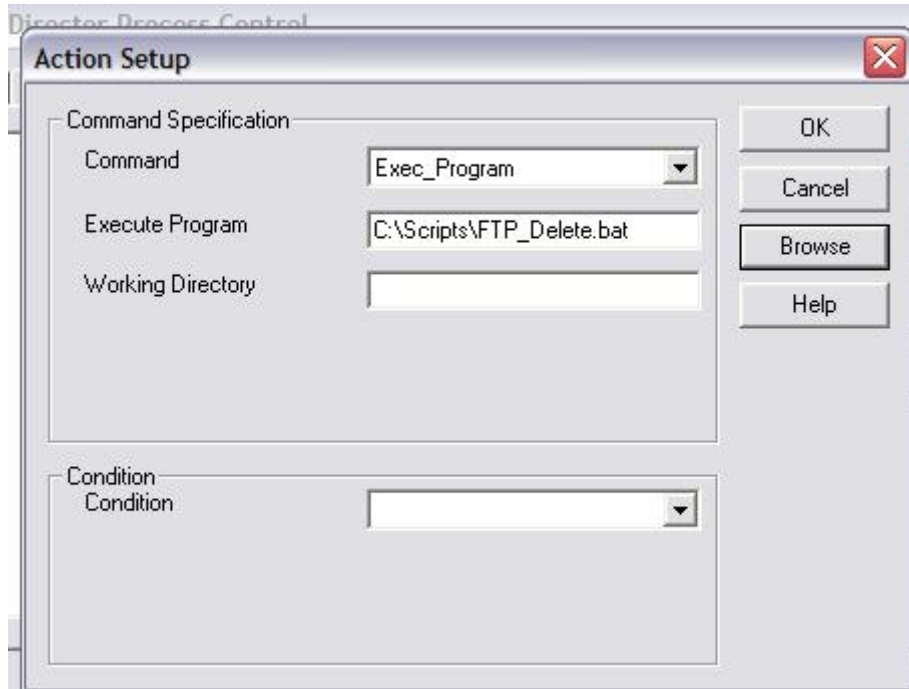
In the “Filename” field you will want to enter the name of the file to be processed. This is the file that is created by the final copy command in the receive batch file created earlier (C:\Program Files\AS2 Program\AS2\Partner\recvfile.edi in this case) If the file already exists then you can click “Browse” and simply open it.



Click Ok and then Click Save.

Gentran:Director for Windows

From the “Commands” line click on “Ins” again.
Select “Exec_Program” from the drop down menu.
Click “Browse” and locate the delete batch file.
Click “OK”



Click “Save” to save the current Session.

Gentran:Director for Windows

The Session is now complete. To run a Session an Event must be created.

Go to the Events tab and click “New”

You can name the Event anything you like.

Select the Session you saved from the drop down menu.

Set the start time and end time as well as the time interval.

Click “OK”

The screenshot shows the 'Event Setup' dialog box. The 'Description' field contains 'AS2FTP'. The 'Session' dropdown menu is set to 'AS2FTP'. The 'Timed Event' checkbox is unchecked. The 'Time: Start' field is '7:00am', the 'Until' field is '8:00pm', and the 'every' field is '10' minutes. The 'Calendar' dropdown menu is empty. The checkboxes for the days of the week are: Sun (unchecked), Mon (checked), Tue (checked), Wed (checked), Thu (checked), Fri (checked), and Sat (unchecked). The 'Date' field is empty.

To activate the Event simply highlight it and click the “Activate” button on the right.

Congratulations! Your setup is complete!

Inbound data from your partner will now be automatically brought into your system and placed in the In Documents. To send data back to them simply transmit as you normally would only select the File Copy communications profile created earlier.