

Gentran:Server[®] for iSeries[®]

Installation Guide

Release 3.5

Sterling Commerce
An IBM Company

Sterling Commerce (Mid America), Inc.
4600 Lakehurst Court Dublin, OH 43016-2000 * 614/793-4000
© Copyright 1988–2008—Sterling Commerce, Inc.

April 2008

Gentran:Server for iSeries
© Copyright 1988 – 2008
Sterling Commerce, Inc.
ALL RIGHTS RESERVED

Sterling Commerce Software

Trade Secret Notice

THE GENTRAN:SERVER FOR ISERIES SOFTWARE (“STERLING COMMERCE SOFTWARE”) IS THE CONFIDENTIAL AND TRADE SECRET PROPERTY OF STERLING COMMERCE, INC., ITS AFFILIATED COMPANIES OR ITS OR THEIR LICENSORS, AND IS PROVIDED UNDER THE TERMS OF A LICENSE AGREEMENT. NO DUPLICATION OR DISCLOSURE WITHOUT PRIOR WRITTEN PERMISSION. RESTRICTED RIGHTS.

This documentation, the Sterling Commerce Software it describes, and the information and know-how they contain constitute the proprietary, confidential and valuable trade secret information of Sterling Commerce, Inc., its affiliated companies or its or their licensors, and may not be used for any unauthorized purpose, or disclosed to others without the prior written permission of the applicable Sterling Commerce entity. This documentation and the Sterling Commerce Software that it describes have been provided pursuant to a license agreement that contains prohibitions against and/or restrictions on their copying, modification and use. Duplication, in whole or in part, if and when permitted, shall bear this notice and the Sterling Commerce, Inc. copyright notice.

As and when provided to any governmental entity, government contractor or subcontractor subject to the FARs, this documentation is provided with RESTRICTED RIGHTS under Title 48 CFR 52.227-19. Further, as and when provided to any governmental entity, government contractor or subcontractor subject to DFARS, this documentation and the Sterling Commerce Software it describes are provided pursuant to the customary Sterling Commerce license, as described in Title 48 CFR 227-7202 with respect to commercial software and commercial software documentation.

These terms of use shall be governed by the laws of the State of Ohio, USA, without regard to its conflict of laws provisions. If you are accessing the Sterling Commerce Software under an executed agreement, then nothing in these terms and conditions supersedes or modifies the executed agreement.

Product names mentioned herein may be trademarks and/or registered trademarks of their respective companies. GENTRAN and GENTRAN:Server are registered trademarks of Sterling Commerce, Inc.

Third Party Software:

Portions of the Sterling Commerce Software may include products, or may be distributed on the same storage media with products, (“Third Party Software”) offered by third parties (“Third Party Licensors”).

Warranty Disclaimer

This documentation and the Sterling Commerce Software which it describes are licensed either "AS IS" or with a limited warranty, as set forth in the Sterling Commerce license agreement. Other than any limited warranties provided, NO OTHER WARRANTY IS EXPRESSED AND NONE SHALL BE IMPLIED, INCLUDING THE WARRANTIES OF MERCHANTABILITY AND FITNESS FOR USE OR FOR A PARTICULAR PURPOSE. The applicable Sterling Commerce entity reserves the right to revise this publication from time to time and to make changes in the content hereof without the obligation to notify any person or entity of such revisions or changes.

The Third Party Software is provided 'AS IS' WITHOUT ANY WARRANTY AND ANY EXPRESSED OR IMPLIED WARRANTIES, INCLUDING BUT NOT LIMITED TO, THE IMPLIED WARRANTIES OF MERCHANTABILITY, AND FITNESS FOR A PARTICULAR PURPOSE ARE DISCLAIMED. FURTHER, IF YOU ARE LOCATED OR ACCESSING THIS SOFTWARE IN THE UNITED STATES, ANY EXPRESS OR IMPLIED WARRANTY REGARDING TITLE OR NON-INFRINGEMENT ARE DISCLAIMED.

Table of Contents

Introduction	1
Before You Begin	2
Perform a New Installation	5
Run the Installation	6
Set Up Standards	12
Complete the Standards File Setup	16
Set Job Descriptions and Subsystems	21
Set Up Access to Gentran:Server	22
Convert to Gentran:Server Release 3.5	24
Run the Installation	27
Set Up Standards	35
Complete Standards File Setup	40
Build the Batch Standards File	43
Set up Job Descriptions and Subsystems	44
Set up Access to Gentran:Server Release 3.5	45
Review FTP Server Data Areas	47
Review Gentran Line Pools Data Areas	48
Re-installation and Reconversion	49

Gentran:Server for iSeries

Release 3.5

Installation Guide

Introduction

Purpose This guide is designed to provide all of the information needed to perform the installation and conversion of Gentran:Server for iSeries Release 3.5.

What Sections to Read You will not need to use all sections in this guide. Use the table below to find the sections you need for your own installation or conversion and the order in which you should read them.

IF you are...	THEN use these sections...
New to Gentran products for iSeries,	<ol style="list-style-type: none">1. Before You Begin on page 2.2. Perform a New Installation on page 5.
Currently using Gentran:Server for iSeries 3.2, 3.3, or 3.4	<ol style="list-style-type: none">1. Before You Begin on page 2.2. Convert to Gentran:Server Release 3.5 on page 24.

Before You Begin

Purpose All users should read this section carefully before beginning the installation and performing any necessary tasks. It contains important information about your operating system, other documents you need to read prior to installation, and system security.

OS/400 Versions Supported Gentran:Server for iSeries Release 3.5 provides support for the OS/400 versions that IBM supports. If you are using a version of OS/400 that IBM does not support, you must upgrade the operating system before installing Release 3.5.

Volume ID for CD-ROMs The Gentran:Server for iSeries Release 3.5 installation CD-ROM has a volume ID of G35CD.



NOTE

If the CD-ROM you received has the wrong Volume ID, contact Gentran Product Support before proceeding.

Save file names when using *SAVF When restoring the install process using a save file, all of the save files need to be downloaded to a common library. The following are the save file naming conventions:

Install save files:

- G3X5DTA
- G3X5PGM
- G3X5FIXDTA
- G3X5FIXPGM
- QGPLG3X5

Tutorial save files:

- G3X5SAMP
- G3X5SAMPFX

Tools save file:

- G3X5TOOL

Standards save file:

- STD35

DASD Requirements

At a minimum, your system must have available the required DASD amounts shown below. All numbers are rounded up to the next megabyte (MB).

	RISC
Minimum DASD available needed for installation	290MB
If you plan to install the sample tutorial library, add:	66MB
If you plan to install the TOOLS library, add:	4MB
If you plan to install all EDI standards versions, add:	605MB
Note: The amount of DASD needed for the standards varies depending on the number of versions you want to install. You need a minimum of 60MB to install two or three versions.	

Other Documents to Review

- All users should read the *Release Notes and Impact Information* before beginning installation.

Customers who are upgrading from an earlier Gentran release should pay special attention to the Impact Information chapter in the *Release Notes and Impact Information*. This section contains important information about changes and enhancements included in Gentran:Server for iSeries Release 3.5.

- New customers should review the *Manager's Implementation Planner*.

Security

All programs in Gentran:Server for iSeries Release 3.5 have been compiled with the option USER PROFILE (*OWNER), with the OWNER of all objects defined as QPGMR. All data files have *PUBLIC authority *ALL granted. This eliminates any authority conflicts on the system. The best method of protecting access to Gentran:Server for iSeries Release 3.5 is to use the security measures in Environment Control in conjunction with iSeries security. (SEE Chapter 2 in the *User Guide* for more information about setting security.)

How to Get Further Assistance

If you are still not certain how to proceed with your installation or conversion after reviewing the following installation path and the sections listed, please call Gentran Product Support.

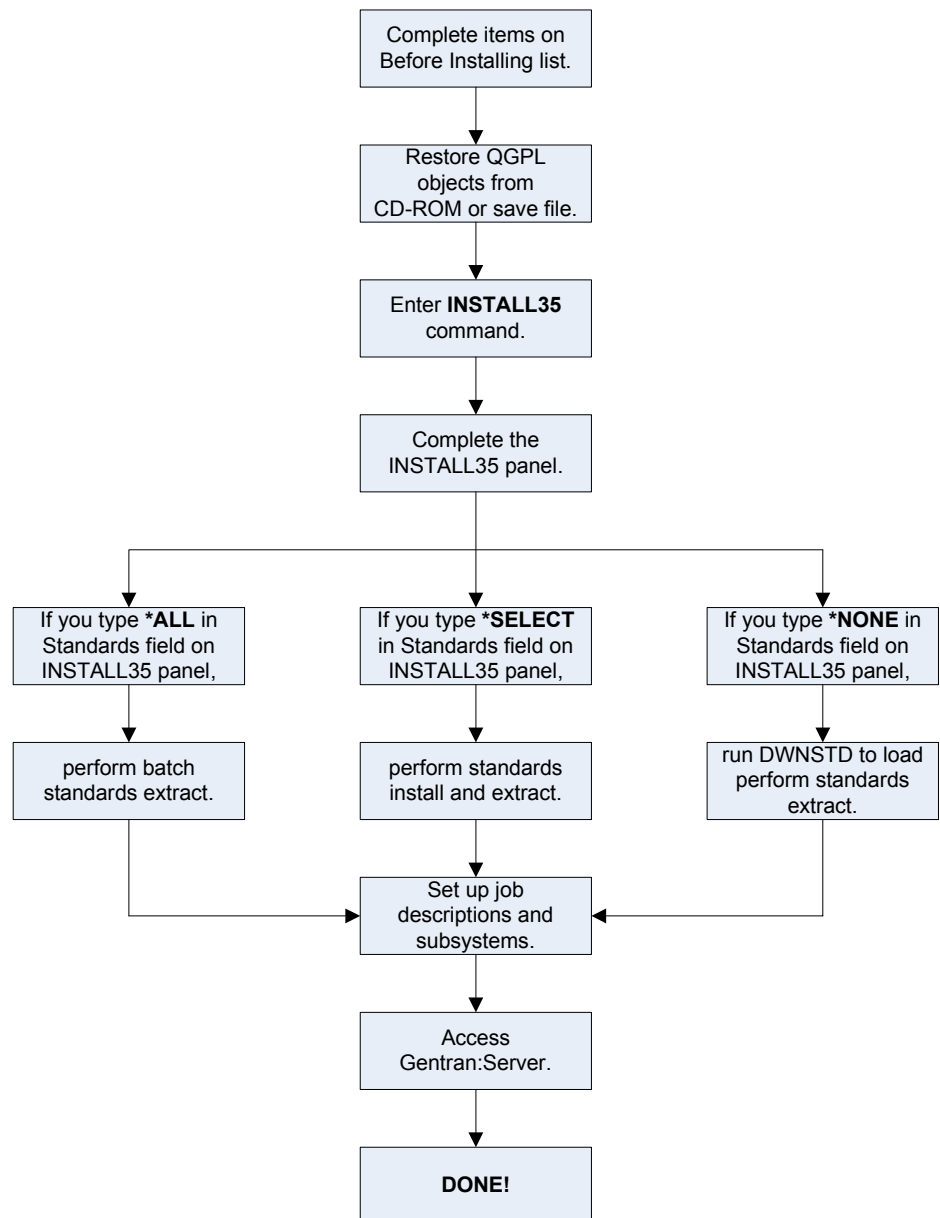
Where to Go Next

Use this table to decide which section you should read next.

IF you are...	THEN go to section...
New to Gentran products for iSeries,	Perform a New Installation on page 5.
Currently using Gentran:Server for iSeries Release 3.2, 3.3, or 3.4	Convert to Gentran:Server Release 3.5 on page 24.
Re-installing Gentran:Server for iSeries Release 3.5,	Re-installation and Reconversion on page 49.
Downloading standards after installation or conversion,	Set Up Standards on page 12.

Perform a New Installation

Purpose This section provides step-by-step procedures for installing Gentran:Server for iSeries Release 3.5 and setting up job descriptions to enable you to use the job scheduler feature. The following diagram gives a high-level overview of the process you will use to install and set up Gentran:Server for iSeries Release 3.5.



Run the Installation

Important! Before Installing

- Installation must be done by the iSeries System Security Officer (QSECOFR) or a user with Security Officer privileges.
- Because the Gentran:Server for iSeries Release 3.5 Installation procedures create numerous informational messages with severities of 0–10 in the job log, we recommend that you change your job to limit messages logged to specific severities by typing the following command.

```
CHGJOB LOG(4 20 *SECLVL) LOGCLPGM(*YES)
```

Overview

The Gentran:Server for iSeries Release 3.5 objects must be restored from CD-ROM or save file onto your system, the installation command must be issued, and the Gentran:Server Installation panel must be completed.

Install from CD-ROM or save file

Use the following procedure to install Gentran:Server for iSeries Release 3.5 from CD-ROM or save file.

Step	Action
1	<p><i>If restoring from CD-ROM</i>, load the Gentran:Server CD-ROM into the CD-ROM drive.</p> <p><i>If restoring from save file</i>, move all save files to one library. The files need to be named as follows:</p> <p>Install save files:</p> <ul style="list-style-type: none"> ■ G3X5DTA ■ G3X5PGM ■ G3X5FIXDTA ■ G3X5FIXPGM ■ QGPLG3X5 <p>Tutorial save files: (required only if restoring the sample files)</p> <ul style="list-style-type: none"> ■ G3X5SAMP ■ G3X5SAMPFX <p>Tools save file: (required only if restoring the tools library)</p> <ul style="list-style-type: none"> ■ G3X5TOOL <p>Standards save file: (required only if adding additional standards to your system during the install)</p> <ul style="list-style-type: none"> ■ STD35

Step	Action
2	<p>If restoring from CD-ROM, type the following command and press Enter.</p> <pre>RSTOBJ OBJ(*ALL) SAVLIB(QGPL) DEV(your device name) MBROPT(*ALL) ALWOBJDIF(*ALL) OPTFILE('/qgpl')</pre> <p>If restoring from a save file, type the following command and press Enter. The SAVF value of G3X5TEMP represents the library where your save file resides.</p> <pre>RSTOBJ OBJ(*ALL) SAVLIB(QGPL) DEV(*SAVF) SAVF(G3X5TEMP/QGPLG3X5) MBROPT(*ALL) ALWOBJDIF(*ALL)</pre> <p>System Response The system restores the installation objects (commands and programs) into the QGPL library. This is done interactively and locks your terminal until the job completes. If all objects were not restored, check the lower-level messages for information.</p>
3	<p>Type INSTALL35 and press F4 (Prompt).</p> <p>Note: An option is available on the command to run the job interactively or submit it to batch. If you submit the job to batch, you can either load all standards or no standards. The standards can be installed separately after the install completes using the DWNSTD command. If you run the job interactively, Percent Complete messages for the job are displayed.</p> <p>System Response The system displays the Gentran:Server Install 3.5 (INSTALL35) panel.</p>

Complete the INSTALL35 Panel

This diagram illustrates the Gentran:Server Install (INSTALL35) panel.

```

Gentran:Server Install 3.5 (INSTALL35)

Type choices, press Enter.

Device . . . . . OPT01      Name, *SAVF
Gentran:Server Libraries:
  Data Library . . . . . G3X5DTA      Name
  Program Library . . . . . G3X5PGM      Name
  Tutorial Data Library . . . . . G3X5SAMP      Name, *NONE
  Tool Library . . . . . G3X5TOOL      Name, *NONE
Bypass Program Lib Install? . . . *NO          *YES, *NO
Version to Convert From . . . . *NONE        *NONE, 3.2, 3.3, 3.4
Run Interactively? . . . . . *YES         *YES, *NO
Standards - New Install . . . . *SELECT      *SELECT, *NONE, *ALL
Library for Save Files. . . . .          Name

                                           Bottom
F3=Exit  F4=Prompt  F5=Refresh  F10=Additional parameters  F12=Cancel
F13=How to use this display  F24=More keys
  
```

Type values for the device, library names, and choice for conversion. Press **Enter** (or **F10** for both dependent and additional parameters).

The system displays the following screen.

```

Gentran:Server Install 3.5 (INSTALL35)

Type choices, press Enter.

Device . . . . . OPT01      Name, *SAVF
Gentran:Server Libraries:
  Data Library . . . . . G3X5DTA      Name
  Program Library . . . . . G3X5PGM      Name
  Tutorial Data Library . . . . . G3X5SAMP      Name, *NONE
  Tool Library . . . . . G3X5TOOL      Name, *NONE
Bypass Program Lib Install? . . . *NO          *YES, *NO
Version to Convert From . . . . *NONE        *NONE, 3.2, 3.3, 3.4
Run Interactively? . . . . . *YES         *YES, *NO
Standards - New Install . . . . *SELECT      *SELECT, *NONE, *ALL
Library for Save Files. . . . .          Name

Additional Parameters

Auxiliary Storage Pool . . . . . *SAVASP      *SAVASP, 1, 2, 3, 4, 5, 6...
Validate Volume ID? . . . . . *YES         *YES, *NO

                                           Bottom
F3=Exit  F4=Prompt  F5=Refresh  F12=Cancel  F13=How to use this display
F24=More keys
  
```

Type the option for Standards and any additional parameters. Press **Enter** to run the Install command. Descriptions for all parameters are detailed in the following table.

Field Descriptions

Review the following table for the Gentran:Server Install 3.5 (INSTALL35) panel field descriptions.

**NOTE****Library Names:**

Enter the names for the libraries where you want the final destination to be. It is not supported if you rename the libraries to something different after you have run the conversion. There are too many places internally that are updated with the library names specified on this install screen.

Field Name	Description
Device	Type the device name of the CD-ROM drive or type * SAVF if restoring from save file.
Gentran:Server Libraries: Server Data Library	Do you want to use the default library name? <ul style="list-style-type: none"> ■ If YES, leave the default value G3X5DATA in the field. ■ If NO, type the name of the library where you want Gentran:Server 3.5 data to be loaded.
Gentran:Server Libraries: Server Program Library	Do you want to use the default library name? <ul style="list-style-type: none"> ■ If YES, leave the default value G3X5PGM in the field. ■ If NO, type the name of the library where you want Gentran:Server 3.5 programs to be loaded. <p>Note: If you have already installed Gentran:Server 3.5 and you want this installation to bypass the program library, you still need to enter the program library used on the initial install for 3.5.</p>
Gentran:Server Libraries: Tutorial Data Library	This library contains sample maps, partners, and communications scripts for the tutorials/samples in the Gentran:Server <i>User Guide</i> and <i>Tutorial Guide</i> . <p>Do you want to load the tutorial library?</p> <ul style="list-style-type: none"> ■ If NO, type *NONE. ■ If YES, answer the question below: <p>Do you want to use the default library name?</p> <ul style="list-style-type: none"> ■ If YES, leave the default value G3X5SAMP in the field. ■ If NO, type the name of the library where you want Gentran:Server 3.5 sample data to be loaded. <p>Caution: If you rename the library from G3X5SAMP, ensure that it is clearly marked as a tutorial library. This library does not contain all of the objects found in the data library.</p>

Field Name	Description
Gentran:Server Libraries: Tool Library	<p>This library contains user tools, source code, and a separate README file.</p> <p>Do you want to load the tools library?</p> <ul style="list-style-type: none"> ■ If NO, type *NONE. ■ If YES, answer the question below: <p>Do you want to use the default library name?</p> <ul style="list-style-type: none"> ■ If YES, leave the default G3X5TOOL in the field. ■ If NO, type the name of the library where you want Gentran:Server 3.5 tools to be loaded. <p>Caution: The tools are provided “as is,” and any modifications made to these tools are not supported.</p>
Bypass Program Lib Install?	<p>Do one of the following:</p> <ul style="list-style-type: none"> ■ When installing Gentran:Server 3.5 for the first time, type *no to ensure that the program library is installed. ■ Type *YES if you wish to create multiple data libraries on subsequent installs.
Version to Convert From	<p>Type *NONE to specify that you are performing a new installation.</p>
Run Interactively	<p>Do one of the following:</p> <ul style="list-style-type: none"> ■ Type *YES to run interactively. ■ Type *NO to submit to batch. <p>Note: If you specify *no, the standards option cannot be *SELECT.</p>
Standards—New Install	<p>Type one of the following options:</p> <ul style="list-style-type: none"> ■ *SELECT: The Selective Download process (DWNSTD) will run during the installation to select the standards versions you will be using. ■ *NONE: No standards will be loaded during installation. The Selective Download process (DWNSTD) should be run at any time after installation to selectively load only the standards you will be using. ■ *ALL: All available standards will be restored during installation. <p>Caution: The *ALL option requires a large amount of DASD (about 605M or higher), which continues to increase each time a new standards version is released.</p>

Field Name	Description
Library for Save Files	If restoring from save file, specify the library name where the save file resides.
Additional Parameters	
Auxiliary Storage Pool	Do you want to restore all libraries to the default, Auxiliary Storage Pool 1? <ul style="list-style-type: none"> ■ If YES, make no change to this field. ■ If NO, type the storage pool name/number to be used.
Validate Volume ID?	Specify whether the VOL parameter will be used when checking the CD-ROM prior to installation. The default (*YES) is recommended to can ensure that the correct CD-ROM is being used for the installation. When checking the Volume ID, the operating system version is determined and used to build the correct Volume ID to compare against the CD-ROM. <p>Note: You should specify *NO only when you need to override the volume ID that was determined so you can continue with the installation using the current CD-ROM.</p> <p>If you do specify *NO, you should verify with Gentran Product Support that you are using a valid CD-ROM before proceeding.</p>

Where to Go Next

Use this table to decide which section to go to next.

IF you entered this in the Standards field on INSTALL35...	THEN go to...
*SELECT or *NONE ,	Set Up Standards on page 12.
*ALL ,	Complete the Standards File Setup on page 16.

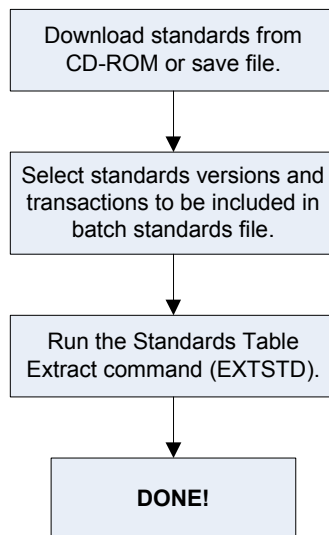
Set Up Standards

Introduction If you entered ***SELECT** in the Standards field on the INSTALL35 panel, the standards download process automatically begins after the installation is complete.

If you entered ***NONE** in the Standards field on the INSTALL35 panel, type **DWNSTD** on the command line to start the standards download process.

Preparation Before installing standards, you may want to review Chapter 7 in the *Gentran:Server for iSeries User Guide* to familiarize yourself with the standards files and commands.

Overview The following diagram shows a high-level overview of the standards download and standards selection process.



Stage 1: Download the Standards from CD-ROM or save file

Use the following procedure to download Standards. You can either add new standards to your online versions or replace all of your online standards with a different list of versions.

Step	Action
1	<p>When prompted by the Installation, insert the Standards CD-ROM into the CD-ROM drive on your system. The volume ID for the Standards CD-ROM is STD35.</p> <p>No action is necessary if restoring from a save file.</p> <p>Note: If you chose not to download standards as part of the installation process (that is, if you entered *NONE in the Standards field on the INSTALL35 panel), start the download process by typing the command DWNSTD on the command line and pressing F4 (Prompt). Then follow the rest of the steps below.</p> <p>System Response The system displays the following screen.</p> <div style="border: 1px solid black; border-radius: 15px; padding: 10px; margin: 10px 0;"> <pre style="font-family: monospace; font-size: 0.9em;"> Standards Selective Download (DWNSTD) Type choices, press Enter. Device _____ Name, *SAVE Gentran:Server Data Library. . . G3X5DTA Library Add or Replace Standards? . . . *ADD *ADD, *REPLACE Library for Stds. Save File . . _____ Character value Additional Parameters Auxiliary Storage Pool *SAVASP *SAVASP, 1, 2, 3, 4, 5, 6... Valid Volume ID? *YES *YES, *NO End of tape option *UNLOAD *UNLOAD, *REWIND, *LEAVE F3=Exit F4=Prompt F5=Refresh F12=Cancel F13=How to use this display F24=More keys Bottom </pre> </div>
2	Type the device name where the CD-ROM is loaded or type *SAVE if downloading Standards from a save file.
3	Type G3X5DTA (or whatever name you used for the default data library during installation).
4	If you are new to Gentran products for iSeries, accept *ADD as the default value.
5	If you are restoring your Standards from a save file, enter the library name where your STD35 save file exists.

Step	Action																																										
6	<p>Press Enter when you have completed the fields.</p> <p>System Response The system displays the confirmation screen.</p>																																										
7	<p>Press Enter to continue.</p> <p>System Response The system displays the Standards Selective Download panel (DWNSTD1).</p> <div data-bbox="516 640 1385 1222" style="border: 1px solid black; border-radius: 15px; padding: 10px; margin: 10px auto; width: fit-content;"> <div style="display: flex; justify-content: space-between; border-bottom: 1px solid black; padding-bottom: 5px;"> DWNSTD1 Standards Selective Download 04-30-08 </div> <p style="margin-top: 10px;">Position to Version: _____</p> <p>Type option press, Enter 1=Select 6=Unselect</p> <table border="0" style="width: 100%; border-collapse: collapse;"> <thead> <tr> <th style="text-align: left;">Opt</th> <th style="text-align: left;">Version</th> <th style="text-align: left;">Description</th> </tr> </thead> <tbody> <tr><td>—</td><td>ACHG02</td><td>ABI BROKERNET DATA STANDARDS</td></tr> <tr><td>—</td><td>ADJL01</td><td>ABI BROKERNET DATA STANDARDS</td></tr> <tr><td>—</td><td>ADJL04</td><td>ABI BROKERNET DATA STANDARDS</td></tr> <tr><td>—</td><td>DJL05</td><td>ABI BROKERNET DATA STANDARDS</td></tr> <tr><td>—</td><td>ADJL06</td><td>ABI BROKERNET DATA STANDARDS</td></tr> <tr><td>—</td><td>ANA001</td><td>TRADACOMS UNITED KINGDOM</td></tr> <tr><td>—</td><td>ATRM01</td><td>ABI BROKERNET DATA STANDARDS</td></tr> <tr><td>—</td><td>ATRM02</td><td>ABI BROKERNET DATA STANDARDS</td></tr> <tr><td>—</td><td>ATRM04</td><td>ABI BROKERNET DATA STANDARDS</td></tr> <tr><td>—</td><td>A2/4</td><td>TDCC (AIR) VERSION 2 RELEASE 4</td></tr> <tr><td>—</td><td>A2/5</td><td>TDCC (AIR) VERSION 2 RELEASE 5</td></tr> <tr><td>—</td><td>A2/6</td><td>TDCC (AIR) VERSION 2 RELEASE 6</td></tr> <tr><td>—</td><td>A2/7</td><td>TDCC (AIR) VERSION 2 RELEASE 7</td></tr> </tbody> </table> <p style="margin-top: 10px;">F3=Continue F12=Cancel</p> </div>	Opt	Version	Description	—	ACHG02	ABI BROKERNET DATA STANDARDS	—	ADJL01	ABI BROKERNET DATA STANDARDS	—	ADJL04	ABI BROKERNET DATA STANDARDS	—	DJL05	ABI BROKERNET DATA STANDARDS	—	ADJL06	ABI BROKERNET DATA STANDARDS	—	ANA001	TRADACOMS UNITED KINGDOM	—	ATRM01	ABI BROKERNET DATA STANDARDS	—	ATRM02	ABI BROKERNET DATA STANDARDS	—	ATRM04	ABI BROKERNET DATA STANDARDS	—	A2/4	TDCC (AIR) VERSION 2 RELEASE 4	—	A2/5	TDCC (AIR) VERSION 2 RELEASE 5	—	A2/6	TDCC (AIR) VERSION 2 RELEASE 6	—	A2/7	TDCC (AIR) VERSION 2 RELEASE 7
Opt	Version	Description																																									
—	ACHG02	ABI BROKERNET DATA STANDARDS																																									
—	ADJL01	ABI BROKERNET DATA STANDARDS																																									
—	ADJL04	ABI BROKERNET DATA STANDARDS																																									
—	DJL05	ABI BROKERNET DATA STANDARDS																																									
—	ADJL06	ABI BROKERNET DATA STANDARDS																																									
—	ANA001	TRADACOMS UNITED KINGDOM																																									
—	ATRM01	ABI BROKERNET DATA STANDARDS																																									
—	ATRM02	ABI BROKERNET DATA STANDARDS																																									
—	ATRM04	ABI BROKERNET DATA STANDARDS																																									
—	A2/4	TDCC (AIR) VERSION 2 RELEASE 4																																									
—	A2/5	TDCC (AIR) VERSION 2 RELEASE 5																																									
—	A2/6	TDCC (AIR) VERSION 2 RELEASE 6																																									
—	A2/7	TDCC (AIR) VERSION 2 RELEASE 7																																									

Stage 2: Select Versions

Use the following procedure to select versions.

Step	Action
1	Type 1 (Select) in the option field beside each version you want to add or replace on the panel.
2	When you are done selecting versions on this panel, press Enter , then Page Down to go to the next panel.
3	Repeat steps 1 and 2 until you have selected all desired versions.
4	<p>Press F3 (Continue) to begin the download process.</p> <p>System Response Several screens are displayed indicating the files being loaded. When the download is complete, the system displays the following message:</p> <p>Standards Selective Download Completed Normally. Press ENTER.</p>
5	Press Enter , remove the CD-ROM, and store it in a safe place.

Where to Go Next

Use this table to decide which section to go to next.

IF...	THEN...
the Standards Selective Download completed successfully,	go to Complete the Standards File Setup on page 16.
you had to cancel the standards download at any point,	return to Set Up Standards on page 12.

Complete the Standards File Setup

Purpose When you install Gentran:Server for iSeries Release 3.5, a limited number of standards versions and transactions are included in the Batch Standards file, primarily for use with the tutorial data.

Because these may not be the versions and transactions you need for processing your company's data, you may still need to download other versions and transactions by using the Select Transactions in Use option. You can wait and perform this step after you have worked with the tutorials, if desired.

Standards The pre-selected Standards versions and transactions for the tutorials include the following:

Versions and Transactions Selected	
Version	Transactions
00200	997, 999
002001UN	CONTRL
002002UN	CONTRL
002040	810, 850, 856, 997
00400	997
004010	810, 850, 856, 997
ANA001	INVOIC
D 3	CONTRL
D 94B	INVOIC, ORDERS, CONTRL
DEFAULT	CONTRL, 997, 999
DEFAULT4	CONTRL, 997, 999
G3/1	997, 999
U3/1	875, 880, 889, 997, 999



NOTE

The version Update Allowed flag must be set to **x** before transactions can be selected.

**Select Transactions
for Batch
Processing**

The Transactions in Use panel (EDIX180-CTL01) enables you to select the standards version and transactions that will be used during batch processing.

Use the following procedure to select the versions and transactions you want included in the batch standards file.

Step	Action
1	<p>Access the Gentran:Server Main Menu (GENMAIN) by typing <code>GO GENMAIN</code> on the command line.</p> <p>Note: You must be the iSeries Security Officer (QSECOFR) or use the Security User ID that installed the software to access Gentran:Server for iSeries Release 3.5 until other User IDs are added to the Gentran:Server Environment Control subsystem.</p>
2	<p>On the Gentran:Server Main Menu (GENMAIN), select option 5 (Work with Standards) and press Enter.</p>
3	<p>On the Work with Standards panel, type 2 (Revise) in the option field next to the desired version and press Enter.</p> <p>System Response The system displays the Standards version panel (EDIX110-FMT01).</p>
4	<p>Change the Update Allowed flag to <code>x</code> and press F10 (Update) to update and return to the Work with Standards panel.</p>
5	<p>On the Work with Standards panel, type 17 (Tran in Use) in the Option field next to the selected Version ID and press Enter.</p> <p>Note: You can locate a version ID by typing it in the Position to Version ID field and pressing Enter, or by using Page Up and Page Down.</p> <p>System Response The system displays the Standards Transactions in Use panel (EDIX180-CTL01).</p>

Step	Action
6	<p>Type 1 (Select) in the option field next to each transaction that you are using for processing from the specified version, as shown in the figure below.</p> <div style="border: 1px solid black; border-radius: 15px; padding: 10px; margin: 10px 0;"> <pre> EDIX180 Standards Transactions in Use EDI 04-30-08 CTL01 12:00:00 Version ID 004010 Description. ANSI VERSION 4 RELEASE 1 SUBRELEASE Type option (and Information), press Enter. 1=Select Opt Tran Description --- 1 100 CONTROL TRANSACTION 101 INSURANCE PLAN DESCRIPTION 104 NAME AND ADDRESS LISTS 1 104 AIR SHIPMENT INFORMATION 105 BUSINESS ENTITY FILINGS 106 MOTOR CARRIER RATE PROPOSAL 107 REQUEST FOR MOTOR CARRIER RATE PROPOSAL 108 RESPONSE TO A MOTOR CARRIER RATE PROPOSAL 109 VESSEL CONTENT DETAILS 1 110 AIR FREIGHT DETAILS AND INVOICE 112 PROPERTY DAMAGE REPORT More... F1=Help F4=Prompt F10=Update F12=Cancel F13=Services F24=More Keys </pre> </div>
7	<p>Use Page Up or Page Down to locate any other additional transactions to be selected for this version and type 1 in the option field next to each.</p> <p>Note: Control transaction and functional acknowledgment transaction (997) are automatically selected when any other transaction is selected.</p>
8	<p>When you have selected all of the necessary transactions, press F10 (Update) or F17(Rolling Update) to update and advance to the next version.</p> <p>System Response The system updates the version and re-displays the Work with Standards panel. The system displays a message indicating that the record was successfully updated.</p> <p>Note: You must select all versions and transactions needed before running the Standards Table Extract (EXTSTD). The Standards Table Extract replaces your current Batch Standards File with only those versions and transactions that are selected.</p>

Note to EDIFACT Users

EDIFACT standards require the use of versions 002001UN, 002002UN, or D 3 to produce the CONTRL acknowledgment. If you are using EDIFACT versions and will be processing acknowledgments, you must verify that the Control Transaction and CONTRL transactions have been selected for each of these versions.

Build the Batch Standards File

Building the batch standards file (used during translation processing) is done using the Standards Table Extract command (EXTSTD). This command replaces your current batch standards file with only those versions and transactions that are selected.



NOTE

This procedure must be done prior to using the newly-selected transactions for EDI translation.



CAUTION

Make sure you have selected all of the versions and transactions you need to have included in the batch standards file (see previous step) before beginning this step.

Use the following procedure to run the Standards Table Extract command (EXTSTD).

Step	Action
1	<p>On the Work with Standards panel, type 30 (Std Table Ext) on the key entry line and press Enter.</p> <p>Note: This command is independent from the Version ID, so the key entry line is used.</p>
2	<p>Leave the default *no in the Schedule Job field and press Enter.</p> <p>System Response The EXTSTD job will be submitted to run in batch. The job is submitted to the job queue specified in the job description that is defined in the Environment Control profile for the user.</p>



NOTE

The original version of the batch standards file, GT00TBP, will be saved and restored if the Extract Standards job does not build the batch standards file successfully.

Where to Go Next

Use this table to decide which section to go to next.

IF...	THEN...
the Standards Table Extract was completed successfully.	go to Set Job Descriptions and Subsystems on page 21.
you had to cancel the Standards Table Extract at any point,	return to Complete the Standards File Setup on page 16.

Set Job Descriptions and Subsystems

Purpose Once you have installed Gentran:Server for iSeries Release 3.5, you should set up job descriptions for the batch processes that you will run with Gentran:Server for iSeries.

Procedure Use the following procedure to set up job descriptions and subsystems.

Step	Action
1	<p>Modify the SCHEDULER and Gentran job descriptions (in the Gentran data library G3X5DTA) to include your application libraries. This enables the batch processes to find your application files.</p> <p>Note: You can create your own job descriptions to be used during processing instead of using the predefined Gentran:Server job descriptions. The new job descriptions must be specified in the Environment Control profile for the users running the jobs.</p> <p>SEE Chapter 2 in the <i>User Guide</i> for more information on specifying job descriptions.</p>
2	<p>Start the Gentran350 subsystem (the subsystem description is in the data library) to begin testing the Job Scheduler.</p> <p>Note: Once you have your Job Scheduler set up to run jobs on a regular basis, you <i>must</i> have this subsystem running whenever your system is up to execute the jobs.</p> <p>You can automate this process by having your iSeries System Administrator include the start of the subsystem in your iSeries Start Up Job (QSTRUP in QSYS or the program specified in the system value QSTRUPJOB).</p>

Where to Go Next Once you have modified the job descriptions, go to Set Up Access to Gentran:Server on page 22.

Set Up Access to Gentran:Server

Purpose Once you have set up the job descriptions you will use with Gentran:Server for iSeries Release 3.5, you need to have your System Administrator set up the library lists for users of Gentran:Server for iSeries Release 3.5. You should also test your access to each of the subsystems.

Procedure Use the following procedure to access Gentran:Server for iSeries Release 3.5.

Step	Action
1	<p>Have your iSeries System Administrator assign the Gentran:Server data and program libraries to the interactive library lists for all users of Gentran:Server for iSeries Release 3.5.</p> <p>Note: Gentran:Server for iSeries Release 3.5 uses the system-created library QTEMP. Make sure that QTEMP is before the Gentran libraries in your library list when accessing Gentran:Server for iSeries Release 3.5.</p> <p>If you accepted the default library names during installation, the libraries you now have are:</p> <ul style="list-style-type: none"> ■ G3X5DTA ■ G3X5PGM ■ G3X5SAMP* ■ G3X5TOOL** <p>Note: The G3X5SAMP library is the optional tutorial library that contains sample tutorial data that you can use with Gentran:Server for iSeries Release 3.5. To use the tutorial data, put this library before the data library (G3X5DTA) in your library list.</p> <p>Note: The G3X5TOOL library is the optional tools library that contains extra programs, commands, and source code. The tools library can display at the end of your library list.</p>
2	<p>To access the Gentran:Server for iSeries Release 3.5 main menu, type <code>GO GENMAIN</code> on the command line.</p> <p>Note: You must be the iSeries Security Officer (QSECOFR) or use the security user ID that installed the software to access Gentran:Server for iSeries Release 3.5 until other user IDs are added to the Environment Control subsystem.</p> <p>SEE the <i>Manager's Implementation Planner</i> for more information about Environment Control and the next sequence of steps for beginning to set up your EDI system with Gentran:Server for iSeries Release 3.5.</p>

Where to Go Next

Use this table to decide which section to go to next.

IF you...	THEN...
have completed all steps in the previous sections successfully,	you have completed installation and setup of Gentran:Server for iSeries Release 3.5.
did not download standards during installation (you entered *NONE in the Standards field on the INSTALL35 panel),	go to Set Up Standards on page 12.

Convert to Gentran:Server Release 3.5

Purpose This section is intended for customers who currently have Gentran:Server for iSeries 3.2, 3.3, or 3.4 installed, and who want to convert to Gentran:Server for iSeries Release 3.5.

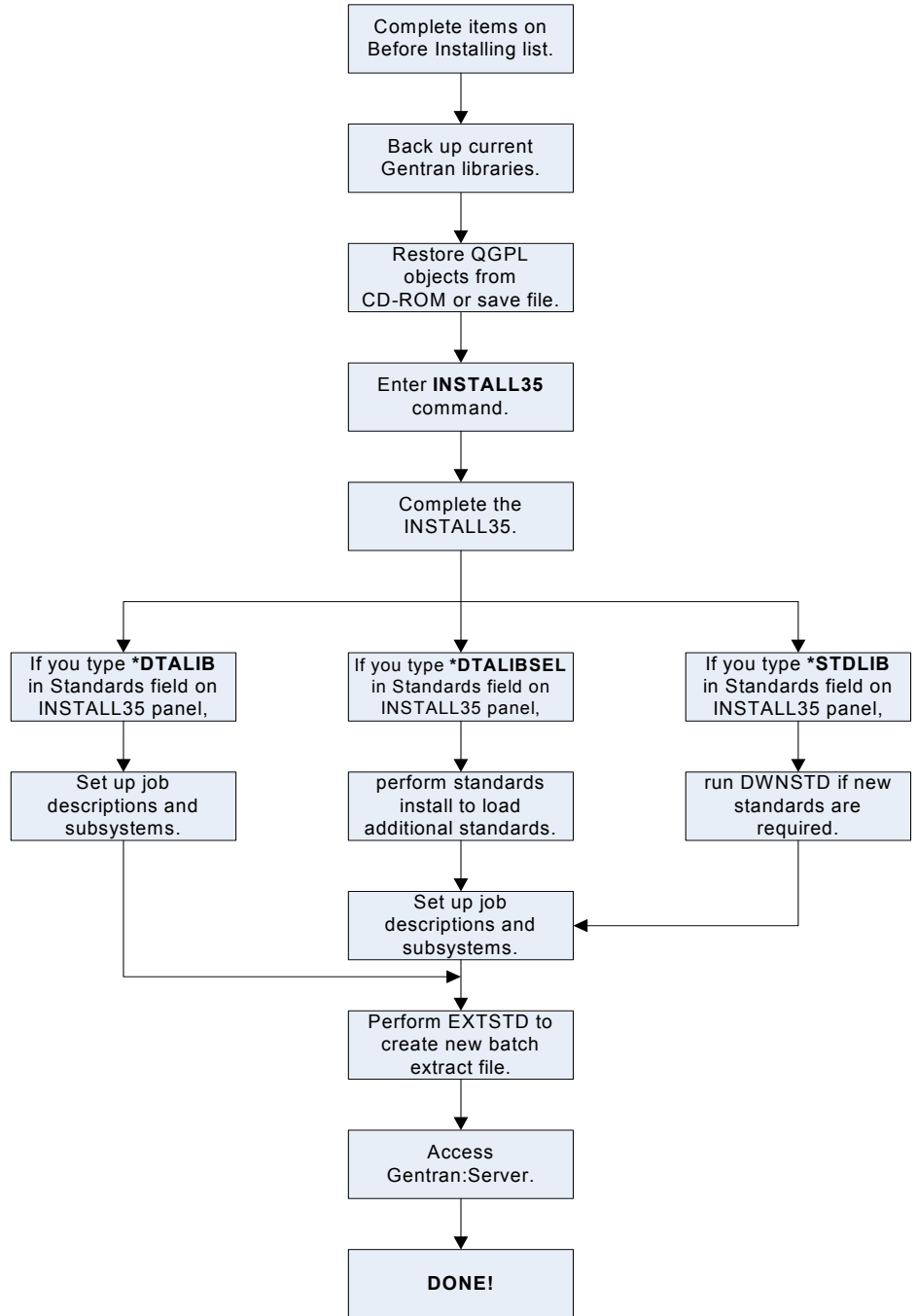


NOTE

If you have already started the installation and conversion to Gentran:Server for iSeries Release 3.5 and had to cancel it, please go to Re-installation and Reconversion on page 49 for important instructions.

Process Overview

The following diagram gives a high-level overview of the process you will use to convert to Gentran:Server for iSeries Release 3.5.



Important! Before Installing

The following must be completed before you begin installing Gentran:Server for iSeries Release 3.5:

- Back up your current Gentran:Server for iSeries libraries.
- Installation must be done by the iSeries System Security Officer (QSECOFR) or by a user with Security Officer privileges.
- Because the Gentran:Server for iSeries Release 3.5 Installation procedures create numerous informational messages with severities of 0–10 in the job log, we recommend that you change your job to limit messages logged to specific severities by typing the following command.

```
CHGJOB LOG(4 20 *SECLVL) LOGCLPGM(*YES)
```

Recommendations for Installation

We recommend that you perform the installation to a system with no users signed on to the iSeries.

Although a dedicated system for installation is not a requirement for the installation, we recommend this strategy to decrease installation time. In addition, running the installation alone eliminates any system performance impact for other users.



CAUTION

When converting data to Gentran:Server 3.5, users and batch jobs should not be running against your current Gentran:Server 3.2, 3.3, or 3.4 libraries or the integrity of the data between the files being converted may be lost.

Run the Installation

Purpose The Gentran:Server for iSeries Release 3.5 objects must be restored from CD-ROM or save file onto your system, the installation command must be issued, and the Gentran:Server Installation panel (INSTALL35) must be completed as part of the conversion process.

Install from CD-ROM Use the following procedure to install Gentran:Server for iSeries Release 3.5 from CD-ROM or save file.

Step	Action
1	<p>If restoring from CD-ROM, load the Gentran:Server CD-ROM into the appropriate device drive.</p> <p>If restoring from save file, move all save files to one library. The files need to be named as follows:</p> <p>Install save files:</p> <ul style="list-style-type: none"> ■ G3X5DTA ■ G3X5PGM ■ G3X5FIXDTA ■ G3X5FIXPGM ■ QGPLG3X5 <p>Tutorial save files: (required only if restoring the sample files)</p> <ul style="list-style-type: none"> ■ G3X5SAMP ■ G3X5SAMPFX <p>Tools save file: (required only if restoring the tools library)</p> <ul style="list-style-type: none"> ■ G3X5TOOL <p>Standards save file: (required only if adding additional standards to your system during the install)</p> <ul style="list-style-type: none"> ■ STD35

Step	Action
2	<p>When restoring from CD-ROM, type the following command and press Enter.</p> <pre>RSTOBJ OBJ(*ALL) SAVLIB(QGPL) DEV(your device name) MBROPT(*ALL) ALWOBJDIF(*ALL) OPTFILE('/qgpl')</pre> <p>When restoring from a save file, type the following command and press Enter. The SAVF value of G3X5TEMP represents the library where your save file resides.</p> <pre>RSTOBJ OBJ(*ALL) SAVLIB(QGPL) DEV(*SAVF) SAVF(G3X5TEMP/QGPLG3X5) MBROPT(*ALL) ALWOBJDIF(*ALL)</pre> <p>System Response The system restores the installation objects (commands and programs) from the CD-ROM into the QGPL library. This is done interactively and locks your terminal until the job completes. If all of the objects were not restored, check the lower level messages for information.</p>
3	<p>Type INSTALL35 and press F4 (Prompt).</p> <p>Note: An option is available on the command to run the job interactively or submit it to batch. If you submit the job to batch, you can either load all standards or no standards. The standards can be installed separately after the installation completes using the DWNSTD command. If you run the job interactively, Percent Complete messages for the job are displayed.</p> <p>System Response The system displays the Gentran:Server Install 3.5 (INSTALL35) panel.</p>

**Complete the
INSTALL35 panel**

This diagram illustrates the Gentran:Server Install 3.5 (INSTALL35) panel.

```

Gentran:Server Install 3.5 (INSTALL35)

Type choices, press Enter.

Device . . . . . OPT01      Name
Gentran:Server Libraries:
  Data Library . . . . . G3X5DTA      Name
  Program Library . . . . . G3X5PGM      Name
  Tutorial Data Library . . . . . G3X5SAMP      Name, *NONE
  Tool Library . . . . . G3X5TOOL      Name, *NONE
  Bypass Program Lib Install? . . . . . *NO      *YES, *NO
  Version to Convert From . . . . . 3.2      *NONE, 3.2, 3.3, 3.4
  Run Interactively? . . . . . *YES      *YES, *NO
  Library for Save Files. . . . .      Name

Bottom
F3=Exit  F4=Prompt  F5=Refresh  F10=Additional parameters  F12=Cancel
F13=How to use this display  F24=More keys
    
```

Type values for the device, library names, and version to convert from and press **Enter** (or **F10** for both dependent and additional parameters). The system displays the following screen.

```

Gentran:Server Install 3.5 (INSTALL35)

Type choices, press Enter.

Device . . . . . OPT01      Name
Gentran:Server Libraries:
  Data Library . . . . . G3X5DTA      Name
  Program Library . . . . . G3X5PGM      Name
  Tutorial Data Library . . . . . G3X5SAMP      Name, *NONE
  Tool Library . . . . . G3X5TOOL      Name, *NONE
  Bypass Program Lib Install? . . . . . *NO      *YES, *NO
  Version to Convert From . . . . . > 3.2      *NONE, 3.2, 3.3, 3.4
  Run Interactively? . . . . . *YES      *YES, *NO
  Library for Save Files. . . . .      Name
  Standards - Existing Install . . . . . *DTALIB      *DTALIB, *DTALIBSEL, *STDLIB
  Libraries to Convert From:
    From Data Library . . . . .      Character value
    From Program Library . . . . .      Character value
    Standards Library . . . . . *DTALIB      Name, *DTALIB
  Convert Work Files . . . . . *NONE      *NONE, *SPLIT, *ALL

More...
F3=Exit  F4=Prompt  F5=Refresh  F12=Cancel  F13=How to use this display
F24=More keys
    
```

Additional parameters shown when Version to Convert From is not *NONE.
Additional parameter shown when Device equals *SAVF.

Type values for Data and Program libraries to convert from and, optionally, any additional parameters. Press **Enter** to run the install command.



NOTE

When selecting *STDLIB for the Standards - Existing Install parameter, you must enter the library name where your old standards reside. Additionally, a new library that does not exist much be entered for the new standards library. Since there are standards file changes, the old standards will be converted into the new library, and the new standards library will be used with your Release 3.5 of Gentran.

Field Descriptions

This table includes a description for each field on the Gentran:Server Installation (INSTALL35) panel.



NOTE

Library Names:

Enter the names for the libraries where you want the final destination to be. It is not supported if you rename the libraries to something different after you have run the conversion. There are too many places internally that are updated with the library names specified on this install screen.

Field	Description
Device	Type the device name where the Gentran:Server CD-ROM is loaded or type *SAVE if restoring from save file.
Gentran:Server Data Library	Do you want to use the default library name? <ul style="list-style-type: none"> ■ If YES, leave the default G3X5DATA in the field. ■ If NO, type the name of the library where you want Gentran:Server 3.5 data to be loaded.
Gentran:Server Program Library	Do you want to use the default library name? <ul style="list-style-type: none"> ■ If YES, leave the default G3X5PGM in the field. ■ If NO, type the name of the library where you want Gentran:Server 3.5 programs to be loaded. <p>Note: If you have already installed Gentran:Server 3.5 and you want this installation to bypass the program library, you still need to enter the program library used on the initial install.</p>

Field	Description
Gentran:Server Tutorial Data Library	<p>This file contains sample maps, partners, and communications scripts for the tutorials/samples used in the Gentran:Server <i>User Guide</i> and <i>Tutorial Guides</i>.</p> <p>Do you want to load the tutorial library?</p> <ul style="list-style-type: none"> ■ If NO, type *NONE. ■ If YES, answer the question below: <p>Do you want to use the default library name?</p> <ul style="list-style-type: none"> ■ If YES, leave the default G3X5SAMP in the field. ■ If NO, type the name of the library where you want Gentran:Server 3.5 sample data to be loaded. <p>Caution: If you rename the library from G3X5SAMP, ensure that it is clearly marked as a tutorial library. This library does not contain all of the objects found in the data library.</p>
Gentran:Server Tools Library	<p>This library contains user tools, source code, and a separate README file.</p> <p>Do you want to load the tools library?</p> <ul style="list-style-type: none"> ■ If NO, type *NONE. ■ If YES, answer the question below: <p>Do you want to use the default library name?</p> <ul style="list-style-type: none"> ■ If YES, leave the default G3X5TOOL in the field. ■ If NO, type the name of the library where you want Gentran:Server 3.5 tools to be loaded. <p>Caution: The tools are provided “as is,” and any modifications made to these tools are not supported.</p>
Bypass Program Lib Install	<p>Do one of the following:</p> <ul style="list-style-type: none"> ■ Type *no to ensure that the program library is to be restored. ■ Type *yes if you have subsequent data libraries to convert. <p>Note: If you type *yes, you still need to enter the library where the programs were installed.</p>
Version to Convert From	<p>Type the release number (3.2, 3.3, or 3.4) from which you are converting.</p>
Run Interactively	<p>Do one of the following:</p> <ul style="list-style-type: none"> ■ Type *yes to run interactively. ■ Type *no to submit to batch. <p>Note: If you specify *no, the standards option cannot be *CVTSEL or *SELECT.</p>

Field	Description
Library for save files	If restoring from save file, specify the library name where the save file resides.
<p>When you enter a value of 3,2, 3.3, or 3.4 in the Version to Convert From field, the following additional fields are displayed when you press Enter or F10:</p> <p>Note: If you plan to use syntax 4 Edifact Standards, new Edifact versions must be downloaded that contain the syntax 4 components. Your existing standards do not have these elements. If you do not want to use Edifact syntax 4, no additional steps are required. your existing standards will be converted for you.</p>	
Standards—Existing Install	Choose the option that best fits your needs from the descriptions below:
	<p>*DTALIB Use this option if you want to migrate your existing standards into Gentran:Server for iSeries Release 3.5. This is particularly important if you have made changes to the online standards.</p> <p>Note: The standards files must exist in the data library you are converting from if using the *DTALIB parameter.</p>
	<p>*DTALIBSEL Use this parameter to migrate your existing standards forward and also add new standards versions from the CD-ROM or save file. This option will migrate forward your existing standards and then execute the Selective Download (DWNSTD) process during installation to allow you to add additional versions.</p> <p>Note: The standards files must exist in the data library you are converting from if using the *DTALIBSEL parameter.</p>
<p>STDLIB If you do not want your standards modified and they exist in a library other than the Gentran libraries, type *STDLIB. You must then execute the Selective Download process (DWNSTD) after installation to selectively load any additional standards you may need.</p> <p>Note: If this option is selected, a new library name must be provided that will store the newly converted standards files that will be used with your Gentran:Server system</p>	
Libraries to Convert From: From Data Library	<p>Type the name of the Gentran:Server data library from which you are converting. Data is read and converted into the new Gentran:Server for iSeries Release 3.5 libraries.</p> <p>Note: The installation program does not overwrite any files or data in this library; after the conversion is complete, both old and new libraries will exist.</p>

Field	Description		
Libraries to Convert From: From Program Library	<p>Type the name of the Gentran:Server program library from which you are converting. Only the printer files and data areas are converted from the program libraries.</p> <p>Note: The installation program does not overwrite any files or data in this library; after the conversion is complete, both old and new libraries will exist. If you are bypassing the program library installation on a subsequent installation job, you still need to reference this program library.</p>		
Standards Libraries: Old Standards Library	Type the library name where your current Standards files reside. This parameter is valid only when *STDLIB is selected for the Standards - Existing Install parameter.		
Standards Libraries: New Standards Library	Type the library name where your new Release 3.5 standards are to reside. This library must not exist. This parameter is valid only when *STDLIB is selected for the Standards - Existing Install parameter.		
Convert Work Files	<p>Indicate which Gentran work files (suspense files, reject files, and split files) are to be converted.</p> <p>Caution: All physical file members for converted files are copied from the previous release to the new release, except for split files and subsplit files. Only the first member is copied for the split files and subsplit files.</p>		
	<table border="1"> <tr> <td data-bbox="618 997 808 1050">*NONE</td> <td data-bbox="808 997 1466 1050">Gentran work files are not converted.</td> </tr> </table>	*NONE	Gentran work files are not converted.
	*NONE	Gentran work files are not converted.	
	<table border="1"> <tr> <td data-bbox="618 1050 808 1129">*SPLIT</td> <td data-bbox="808 1050 1466 1129">Only split files and subsplit files are converted (only the first member is copied.)</td> </tr> </table>	*SPLIT	Only split files and subsplit files are converted (only the first member is copied.)
*SPLIT	Only split files and subsplit files are converted (only the first member is copied.)		
<table border="1"> <tr> <td data-bbox="618 1129 808 1213">*ALL</td> <td data-bbox="808 1129 1466 1213">Convert all Gentran work files, split files, and subsplit files.</td> </tr> </table>	*ALL	Convert all Gentran work files, split files, and subsplit files.	
*ALL	Convert all Gentran work files, split files, and subsplit files.		
Additional Parameters			
Auxiliary Storage Pool	All libraries are restored to Auxiliary Storage Pool 1 unless otherwise indicated.		
Validate Volume ID?	<p>Specify whether the VOL parameter will be used when checking the CD-ROM prior to installation. The default *YES is recommended to ensure that the correct CD-ROM is being used for the installation. When checking the Volume ID, the operating system version is determined and used to build the correct Volume ID to compare against the CD-ROM.</p> <p>Note: You should specify *NO <i>only</i> when you need to override the volume ID so you can continue the installation using the current CD-ROM.</p> <p>If you do specify *NO, you should verify with Gentran Product Support that you are using a valid CD-ROM before proceeding.</p> <p>Standards CDs are initialized as STD35.</p>		

Where to Go Next

Use this table to decide which section to go to next.

IF you entered this in the Standards field on INSTALL35	THEN go to
*DTALIBSEL	Set Up Standards on page 35.
*DTALIB or *STDLIB	Build the Batch Standards File on page 43. Note: If you want to add standards, prompt DWNSTD from the command line.

Set Up Standards

Introduction If you entered either ***DTALIB** in the Standards field on the INSTALL35 panel, the standards download process will automatically begin after the installation is completed.

**NOTE**

If you chose not to download standards as part of the Installation process (you entered ***STDLIB** or ***DTALIB** in the Standards field on the INSTALL35 panel), start the download process by typing the command **DWNSTD** on the command line and pressing **F4** (Prompt). Then follow the steps in this section.

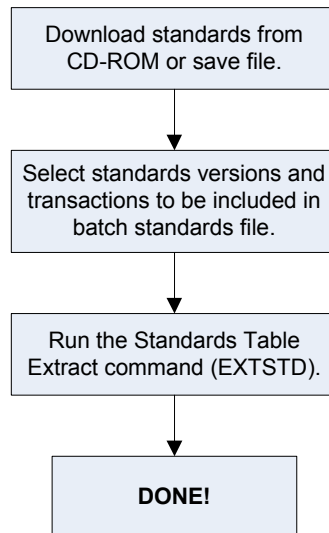
Preparation Prior to installing additional standards versions, it is important to determine what versions you are required to add and what method you want to use for the installation. In most cases, you will want to use the ***ADD** option when loading additional standards to minimize the impact on your existing standards versions.

The following commands are useful for determining your currently loaded standards and the standards available from the tape:

- **PRTSTD TAP** – Prints the list of standards contained on the standards CD-ROM.
- **PRTSTD BAT** – Prints the list of standards currently in your batch standards file.
- **PRTSTD USE** – Prints the list of standards versions selected in your online standards for inclusion in the batch standards file for processing.

Before installing standards, review the Standards chapter in the *Gentran:Server for iSeries User Guide* to familiarize yourself with the standards files and the commands.

Overview This diagram provides a high-level overview of the standards download and standards selection process.



Stage 1: Download the Standards from CD-ROM or save file

Use the following procedure to download Standards. You can either add new standards to your online versions or replace all of your online standards with a different list of versions.

Step	Action
1	<p>When prompted, insert the Standards CD-ROM into the CD-ROM drive on your system. The volume ID for the CD-ROM is STD35.</p> <p>No action is necessary if restoring from a save file.</p> <p>Note: If you chose not to download standards as part of the installation process (you entered *NONE or *CNVT in the Standards field on the INSTALL35 panel), start the download process by typing the command DWNSTD on the command line and pressing F4 (Prompt). Then follow the rest of the steps in this section.</p> <p>System Response The system displays the following screen.</p> <div style="border: 1px solid black; border-radius: 15px; padding: 10px; margin: 10px 0;"> <pre style="font-family: monospace; font-size: 0.9em;"> Standards Selective Download (DWNSTD) Type choices, press Enter. Device _____ Name, *SAVF Gentran:Server Data Library. . . G3X5DTA Library Add or Replace Standards? . . . *ADD *ADD, *REPLACE Library for Stds. Save File . . . _____ Character value Additional Parameters Auxiliary Storage Pool *SAVASP *SAVASP, 1, 2, 3, 4, 5, 6... Valid Volume ID? *YES *YES, *NO End of tape option *UNLOAD *UNLOAD, *REWIND, *LEAVE Bottom F3=Exit F4=Prompt F5=Refresh F12=Cancel F13=How to use this display F24=More keys </pre> </div>
2	Type the device name where the Standards media is loaded or type *SAVF if downloading standards from a save file.
3	Type G3X5DTA (or whatever name you used for the default data library during installation).
4	<p>Do one of the following:</p> <ul style="list-style-type: none"> ■ If you want to <i>add</i> new standards to your online standards, type *ADD. The default is *ADD. ■ If you want to <i>replace</i> your entire online standards with new versions, type *REPLACE.

Step	Action																																										
5	If you are restoring your Standards from a save file, enter the library name where your STD35 save file exists.																																										
6	<p>Press Enter when you have completed the fields.</p> <p>System Response The system displays a confirmation screen.</p>																																										
7	<p>Press Enter to continue.</p> <p>System Response The system displays the Standards Selective Download Panel (DWNSTD1).</p> <div style="border: 1px solid black; border-radius: 15px; padding: 10px; margin: 10px 0;"> <p style="text-align: center;">DWNSTD1 Standards Selective Download 04-30-08</p> <p>Position to Version: _____</p> <p>Type option press, Enter 1=Select 6=Unselect</p> <table border="0" style="width: 100%; border-collapse: collapse;"> <thead> <tr> <th style="text-align: left;">Opt</th> <th style="text-align: left;">Version</th> <th style="text-align: left;">Description</th> </tr> </thead> <tbody> <tr><td>—</td><td>ACHG02</td><td>ABI BROKERNET DATA STANDARDS</td></tr> <tr><td>—</td><td>ADJL01</td><td>ABI BROKERNET DATA STANDARDS</td></tr> <tr><td>—</td><td>ADJL04</td><td>ABI BROKERNET DATA STANDARDS</td></tr> <tr><td>—</td><td>ADJL05</td><td>ABI BROKERNET DATA STANDARDS</td></tr> <tr><td>—</td><td>ADJL06</td><td>ABI BROKERNET DATA STANDARDS</td></tr> <tr><td>—</td><td>ANA001</td><td>TRADACOMS UNITED KINGDOM</td></tr> <tr><td>—</td><td>ATRM01</td><td>ABI BROKERNET DATA STANDARDS</td></tr> <tr><td>—</td><td>ATRM02</td><td>ABI BROKERNET DATA STANDARDS</td></tr> <tr><td>—</td><td>ATRM04</td><td>ABI BROKERNET DATA STANDARDS</td></tr> <tr><td>—</td><td>A2/4</td><td>TDCC (AIR) VERSION 2 RELEASE 4</td></tr> <tr><td>—</td><td>A2/5</td><td>TDCC (AIR) VERSION 2 RELEASE 5</td></tr> <tr><td>—</td><td>A2/6</td><td>TDCC (AIR) VERSION 2 RELEASE 6</td></tr> <tr><td>—</td><td>A2/7</td><td>TDCC (AIR) VERSION 2 RELEASE 7</td></tr> </tbody> </table> <p>F3=Continue F12=Cancel</p> </div>	Opt	Version	Description	—	ACHG02	ABI BROKERNET DATA STANDARDS	—	ADJL01	ABI BROKERNET DATA STANDARDS	—	ADJL04	ABI BROKERNET DATA STANDARDS	—	ADJL05	ABI BROKERNET DATA STANDARDS	—	ADJL06	ABI BROKERNET DATA STANDARDS	—	ANA001	TRADACOMS UNITED KINGDOM	—	ATRM01	ABI BROKERNET DATA STANDARDS	—	ATRM02	ABI BROKERNET DATA STANDARDS	—	ATRM04	ABI BROKERNET DATA STANDARDS	—	A2/4	TDCC (AIR) VERSION 2 RELEASE 4	—	A2/5	TDCC (AIR) VERSION 2 RELEASE 5	—	A2/6	TDCC (AIR) VERSION 2 RELEASE 6	—	A2/7	TDCC (AIR) VERSION 2 RELEASE 7
Opt	Version	Description																																									
—	ACHG02	ABI BROKERNET DATA STANDARDS																																									
—	ADJL01	ABI BROKERNET DATA STANDARDS																																									
—	ADJL04	ABI BROKERNET DATA STANDARDS																																									
—	ADJL05	ABI BROKERNET DATA STANDARDS																																									
—	ADJL06	ABI BROKERNET DATA STANDARDS																																									
—	ANA001	TRADACOMS UNITED KINGDOM																																									
—	ATRM01	ABI BROKERNET DATA STANDARDS																																									
—	ATRM02	ABI BROKERNET DATA STANDARDS																																									
—	ATRM04	ABI BROKERNET DATA STANDARDS																																									
—	A2/4	TDCC (AIR) VERSION 2 RELEASE 4																																									
—	A2/5	TDCC (AIR) VERSION 2 RELEASE 5																																									
—	A2/6	TDCC (AIR) VERSION 2 RELEASE 6																																									
—	A2/7	TDCC (AIR) VERSION 2 RELEASE 7																																									

Stage 2: Select Versions

Use the following procedure to select versions.

Step	Action
1	Type 1 (Select) in the option field beside each version you want to add or replace on the panel.
2	When you are done selecting versions on this panel, press Enter , then Page Down to go to the next panel.
3	Repeat steps 1 and 2 until you have selected all appropriate versions.
4	<p>Press F3 (Continue) to begin the download process.</p> <p>System Response Several screens are displayed indicating the files being loaded. When the download is complete, the system displays the following message:</p> <p>Standards Selective Download Completed Normally. Press ENTER.</p>
5	Press Enter , remove the CD-ROM, and store it in a safe place.

Where to Go Next

Use this table to decide which section to go to next.

IF...	THEN...
the Standards Selective Download was completed successfully,	Complete Standards File Setup on page 40.
you had to cancel the standards download at any point,	Set Up Standards on page 35.

Complete Standards File Setup

Purpose If you have added or replaced standards versions during the installation by selecting *DTALIBSEL, or by running DWNSTD, you still need to download these versions and transactions to your batch standards file by using the Select Transactions in Use option.

Standards The pre-selected Batch Standards versions and transactions that ship with the system for the tutorials include the following:

Versions and Transactions Selected	
Version	Transactions
00200	997, 999
002001UN	CONTRL
002002UN	CONTRL
002040	810, 850, 856, 997
00400	997
004010	810, 850, 856, 997
ANA001	INVOIC
D 3	CONTRL
D 94B	INVOIC, ORDERS, CONTRL
DEFAULT	CONTRL, 997, 999
DEFAULT4	CONTRL, 997, 999
G3/1	997, 999
U3/1	875, 880, 889, 997, 999



NOTE

The version Update Allowed flag must be set to a x before transactions can be selected.

Select Transactions for Batch Processing

The Transactions in Use panel (EDIX180-CTL01) enables you to select the standards version and transactions that will be used during batch processing.

Use the following procedure to select the versions and transactions you want included in the batch standards file.

Step	Action
1	On the Gentran:Server Main Menu (GENMAIN), select option 5 (Work with Standards) and press Enter .
2	<p>On the Work with Standards panel, type 17 (Tran in Use) in the Option field next to the selected Version ID and press Enter.</p> <p>Note: You can locate a version ID by typing it in the Position to Version ID field and pressing Enter, or by using Page Up and Page Down.</p> <p>System Response The system displays the Standards Transactions in Use panel (EDIX180-CTL01).</p>
3	<p>Type 1 (Select) in the option field next to each transaction that you are using for processing from the specified version, as shown in the following figure.</p> <div data-bbox="558 1037 1446 1591" style="border: 1px solid black; border-radius: 15px; padding: 10px; margin: 10px 0;"> <pre> EDIX180 Standards Transactions in Use EDI 04-30-08 CTL01 12:00:00 Version ID 004010 Description. ANSI VERSION 4 RELEASE 1 SUBRELEASE Type option (and Information), press Enter. 1=Select Opt Tran Description 1 100 CONTROL TRANSACTION 1 101 INSURANCE PLAN DESCRIPTION 1 104 NAME AND ADDRESS LISTS 1 105 AIR SHIPMENT INFORMATION 1 106 BUSINESS ENTITY FILINGS 1 107 MOTOR CARRIER RATE PROPOSAL 1 108 REQUEST FOR MOTOR CARRIER RATE PROPOSAL 1 109 RESPONSE TO A MOTOR CARRIER RATE PROPOSAL 1 110 VESSEL CONTENT DETAILS 1 112 AIR FREIGHT DETAILS AND INVOICE 1 112 PROPERTY DAMAGE REPORT More... F1=Help F4=Prompt F10=Update F12=Cancel F13=Services F24=More Keys </pre> </div>
4	Press Page Up or Page Down to locate any additional transactions to be selected for this version and type 1 in the option field next to each.

Step	Action
5	<p>When you have selected all of the necessary transactions, press F10 (Update) or F17 (rolling update) to update and advance to the next version.</p> <p>System Response The system updates the version and re-displays the Work with Standards panel. The system displays a message indicating that the record was successfully updated.</p> <p>Note: You must select all versions and transactions needed before running the Standards Table Extract. The Standards Table Extract replaces your current Batch Standards File with only those versions and transactions that are selected.</p>

Note to EDIFACT Users

EDIFACT standards require the use of version 002001UN, 002002UN, or D 3 to produce the CONTRL acknowledgment. If you are using EDIFACT versions and will be processing acknowledgments, you must verify that the Control Transaction and CONTRL transactions have been selected for each of these versions.

Build the Batch Standards File

Build the batch standards file using the Standards Table Extract command (EXTSTD). This command replaces your current batch standards file with only those versions and transactions that are selected.

**NOTE**

This procedure must be done prior to using Gentran:Server 3.5. New fields were added to this file and your process will not function properly unless you rebuild this file.

**CAUTION**

Make sure you have selected all of the versions and transactions you need to have included in the batch standards file (see previous step) before beginning this step.

The Standards Table Extract command (EXTSTD) runs from the Work with Standards panel. Type 30 (Std Table Ext) on the key entry line and press **Enter**. This command is independent from the Version ID, so the key entry line is used.

**NOTE**

The original version of the batch standards file (GT00TBP) is saved and restored if the Extract Standards job does not build the batch standards file successfully.

Where to Go Next

Use this table to decide which section to go to next.

IF...	THEN...
the Standards Table Extract was completed successfully,	do the following: <ul style="list-style-type: none"> ■ go to Set up Job Descriptions and Subsystems on page 44 if you are <i>not</i> a Viewpoint user.
you had to cancel the Standards Table Extract,	return to Complete Standards File Setup on page 40.

Set up Job Descriptions and Subsystems

Purpose After you have installed Gentran:Server for iSeries Release 3.5, you should set up job descriptions for the batch processes that you will run with Gentran:Server for iSeries.

Procedure Use the following procedure to set up job descriptions and subsystems.

Step	Action
1	<p>Modify the SCHEDULER and Gentran job descriptions (in the Gentran data library G3X5DTA) to include your application libraries. This enables the batch processes to find your application files.</p> <p>Note: You can create your own job descriptions to be used during processing instead of using the predefined Gentran:Server job descriptions. The new job descriptions must be specified in the Environment Control profile for the users running the jobs. (SEE the Chapter 2 in the <i>User Guide</i> for more information on specifying job descriptions.)</p>
2	<p>Start the Gentran350 subsystem (the subsystem description is in the data library) to begin testing the Job Scheduler.</p> <p>Note: Once you have your Job Scheduler set up to run jobs on a regular basis, you <i>must</i> have this subsystem running whenever your system is up to execute the jobs.</p> <p>You can automate this process by having your iSeries System Administrator include the start of the subsystem in your iSeries Start Up Job (QSTRUP in QSYS or the program specified in the system value QSTRUPJOB).</p>

Where to Go Next After you have modified the job descriptions, go to Set up Access to Gentran:Server Release 3.5 on page 45.

Set up Access to Gentran:Server Release 3.5

Purpose After you have set up the job descriptions you will use with Gentran:Server for iSeries Release 3.5, you need to have your System Administrator set up the library lists for users of Gentran:Server for iSeries Release 3.5. You should also test your access to each of the subsystems.

Procedure Use the following procedure to access Gentran:Server for iSeries Release 3.5.

Step	Action
1	<p>Have your iSeries System Administrator assign the Gentran:Server data and program libraries to the interactive library lists for all users of Gentran:Server for iSeries Release 3.5.</p> <p>Note: Make sure that QTEMP is before the Gentran:Server libraries in the user library lists.</p> <p>If you accepted the default library names during installation, the libraries you now have are:</p> <ul style="list-style-type: none"> ■ G3X5DTA ■ G3X5PGM ■ G3X5SAMP* ■ G3X5TOOL** <p>*Note: The G3X5SAMP library is the optional tutorial library that contains sample tutorial data that you can use with Gentran:Server for iSeries Release 3.5. To use the tutorial data, put this library before the data library (G3X5DTA) in your library list.</p> <p>**Note: The G3X5TOOL library is the optional tools library that contains extra programs, commands, and source code. The tools library can display at the end of your library list.</p>
2	<p>Type GO GENMAIN on the command line to access the Gentran:Server for iSeries Release 3.5 main menu.</p>



NOTE

A user profile is created in Environment Control for the security user who installed the software if the user was not already in Environment Control to enable user profiles to be maintained.

Where to Go Next

Use this table to decide which section to go to next.

IF you...	THEN go to...
did not download standards during installation (you entered *STDLIB or *DTALIB in the Standards field on the INSTALL35 panel) and would like to now,	Set Up Standards on page 35.
had to cancel the installation/ conversion and want to run the installation/conversion again,	Re-installation and Reconversion on page 49.
converted or added standards and the INSTALL35 completed successfully,	Do one of the following: <ul style="list-style-type: none"> ■ Review FTP Server Data Areas on page 47 if you use the FTP Server Interface. ■ Review Gentran Line Pools Data Areas on page 48 if you use line pools. ■ Otherwise, the installation is complete.

Review FTP Server Data Areas



NOTE

Complete this section *only* if you are using the FTP Server Interface.

Purpose

During an installation, the values in the data areas QGPL/GENFTPLIBP and QGPL/GENFTPLIBT are updated with the new data and program libraries entered with the install command. If you are still using the previous release of Gentran, you may want to modify the production and/or test data areas back to their original values.

(SEE “FTP Server Interface Commands” in the *Gentran:Server for iSeries Communications Guide* for further clarification on how to use the two different data areas.)

Procedure

Use the following procedure to review the FTP Server data areas.

Step	Action
1	<p>On the command line, type GENFTPSLL and press F4 (Prompt). The following command displays. Press F10 to see additional parameters.</p> <div style="border: 1px solid black; border-radius: 15px; padding: 10px; margin: 10px 0;"> <pre style="font-family: monospace; font-size: 0.9em;"> Gentran Set FTP Libs (GENFTPSLL) Type Choices, press Enter. Gentran Production Pgm Library G3X5PGM Pgm Lib Name Gentran Production Dta Library G3X5DTA Dta Lib Name Gentran Test Pgm Library G3X5PGM Pgm Lib Name Gentran Test Dta Library G3X5DTA Dta Lib Name Bottom F3=Exit F4=Prompt F5=Refresh F12=Cancel F13=How to use this display F24=More keys </pre> </div>
2	<p>To update the data areas, type the appropriate library names for each setting.</p>
3	<p>Press Enter and the data areas update with the specified values.</p>

Where to Go Next

Go to Review Gentran Line Pools Data Areas on page 48 if you use line pools. Otherwise, the installation is complete.

Review Gentran Line Pools Data Areas



NOTE

Complete this section *only* if you are using Gentran Line Pools.

Purpose During an installation, the Gentran Line Pool data areas that begin with **GLP** are converted. You should verify that they were all migrated successfully to your new data library.

Procedure Use the following procedure to review the Gentran Line Pools data areas.

Step	Action
1	Type the following on the command line: <pre>WRKOBJ OBJ(olddatalib/GLP*) OBJTYPE(*DTAARA)</pre> where <code>olddatalib</code> represents your old data library. Press Enter . This provides a list of all possible Gentran Line Pool data areas.
2	Print or write the list of all the Gentran Line Pools.
3	Type the following on the command line: <pre>WRKOBJ OBJ(newdatalib/GLP*) OBJTYPE(*DTAARA)</pre> where <code>newdatalib</code> represents your new data library. Press Enter .
4	Verify that all the Gentran Line Pool data areas from your old data library were migrated to your new data library.

Where to Go Next You have completed the installation/conversion process. If you have further data libraries that share the program library just converted, see Reconversion of Data Library Only on page 49.

Re-installation and Reconversion

Purpose If your installation or conversion completed abnormally or was cancelled, you may have to re-install Gentran:Server for iSeries Release 3.5. If installation and conversion completed normally and you just want to refresh the data library, you may want to reconvert the data library.

Important: Before Re-installing! These Gentran:Server for iSeries Release 3.5 libraries *must* be deleted before re-installing. If you accepted the default library names during installation, delete the name shown in parentheses for each library below:

- Gentran:Server Data library (default name G3X5DTA)
- Gentran:Server Program library (default name G3X5PGM)
- Gentran:Server Tutorial library (default name G3X5SAMP) (if loaded)
- Gentran:Server Tools library (default name G3X5TOOL) (if loaded)

**How to Re-install/
Reconvert**

After deleting the libraries listed in the section above, use this table to decide your next step.

IF you are...	THEN go to...
a new Gentran:Server user,	Perform a New Installation on page 5.
an existing Gentran:Server user and need to re-install and reconvert,	Convert to Gentran:Server Release 3.5 on page 24.
an existing Gentran:Server user and need to reconvert the data library only,	Reconversion of Data Library Only on page 49.

**Reconversion of
Data Library Only**

To reconvert your Release 3.2, 3.3, or 3.4 data library at any point, you can run the `INSTALL35` command and specify ***YES** in the Bypass Program Lib Install? field.

