

Gentran:Server® Workstation

Maintenance and Troubleshooting Guide

Version 6.1

Sterling Commerce
An IBM Company

Copyright Notice

August 2004

© Copyright 1998 - 2004
Sterling Commerce, Inc.
ALL RIGHTS RESERVED

Sterling Commerce Software

Trade Secret Notice

THE GENTRAN:SERVER FOR UNIX SOFTWARE ("STERLING COMMERCE SOFTWARE") IS THE CONFIDENTIAL AND TRADE SECRET PROPERTY OF STERLING COMMERCE, INC., ITS AFFILIATED COMPANIES OR ITS OR THEIR LICENSORS, AND IS PROVIDED UNDER THE TERMS OF A LICENSE AGREEMENT. NO DUPLICATION OR DISCLOSURE WITHOUT PRIOR WRITTEN PERMISSION. RESTRICTED RIGHTS.

This documentation, the Sterling Commerce Software it describes, and the information and know-how they contain constitute the proprietary, confidential and valuable trade secret information of Sterling Commerce, Inc., its affiliated companies or its or their licensors, and may not be used for any unauthorized purpose, or disclosed to others without the prior written permission of the applicable Sterling Commerce entity. This documentation and the Sterling Commerce Software that it describes have been provided pursuant to a license agreement that contains prohibitions against and/or restrictions on their copying, modification and use. Duplication, in whole or in part, if and when permitted, shall bear this notice and the Sterling Commerce, Inc. copyright notice.

As and when provided to any governmental entity, government contractor or subcontractor subject to the FARs, this documentation is provided with RESTRICTED RIGHTS under Title 48 CFR 52.227-19. Further, as and when provided to any governmental entity, government contractor or subcontractor subject to DFARs, this documentation and the Sterling Commerce Software it describes are provided pursuant to the customary Sterling Commerce license, as described in Title 48 CFR 227-7202 with respect to commercial software and commercial software documentation.

These terms of use shall be governed by the laws of the State of Ohio, USA, without regard to its conflict of laws provisions. If you are accessing the Sterling Commerce Software under an executed agreement, then nothing in these terms and conditions supersedes or modifies the executed agreement.

Product names mentioned herein may be trademarks and/or registered trademarks of their respective companies. Gentran and Gentran:Server are registered trademarks of Sterling Commerce, Inc.

Third Party Software

Portions of the Sterling Commerce Software may include products, or may be distributed on the same storage media with products, ("Third Party Software") offered by third parties ("Third Party Licensors"). Portions of this software are copyrighted by Data Direct Technologies, Inc. 1991-2002.

Warranty Disclaimer

This documentation and the Sterling Commerce Software which it describes are licensed either "AS IS" or with a limited warranty, as set forth in the Sterling Commerce license agreement. Other than any limited warranties provided, NO OTHER WARRANTY IS EXPRESSED AND NONE SHALL BE IMPLIED, INCLUDING THE WARRANTIES OF MERCHANTABILITY AND FITNESS FOR USE OR FOR A PARTICULAR PURPOSE. The applicable Sterling Commerce entity reserves the right to revise this publication from time to time and to make changes in the content hereof without the obligation to notify any person or entity of such revisions or changes.

The Third Party Software is provided 'AS IS' WITHOUT ANY WARRANTY AND ANY EXPRESSED OR IMPLIED WARRANTIES, INCLUDING BUT NOT LIMITED TO, THE IMPLIED WARRANTIES OF MERCHANTABILITY, AND FITNESS FOR A PARTICULAR PURPOSE ARE DISCLAIMED. FURTHER, IF YOU ARE LOCATED OR ACCESSING THIS SOFTWARE IN THE UNITED STATES, ANY EXPRESS OR IMPLIED WARRANTY REGARDING TITLE OR NON-INFRINGEMENT ARE DISCLAIMED.



Table of Contents

About This Guide

▶ Welcome	ii
▶ Chapter Contents	iii
▶ Related Publications	iv
▶ Documentation Conventions	vii

Introduction

▶ Overview	1-2
▶ Product Levels	1-3
▶ Log Files and Temporary Files	1-5

System Messages

▶ Overview	2-2
▶ Messages in Numerical Order	2-4
▶ Messages in Alphabetical Order (Starting with Variables)	2-72
▶ Messages in Alphabetical Order (Not Starting with Variables)	2-79
▶ Gentran:Server Return Codes	2-166
▶ UNIX Error Codes	2-171
▶ DISAM Error Codes	2-174

Moving Files Overview

Overview

▶ Introduction	3-2
▶ The Source-to-Destination Process	3-3

Planning the Move

Overview

▶ Introduction	4-2
▶ The Planning Process	4-3

Describing the Source and Destination Environments

▶ Overview	4-5
------------------	-----

Choosing a File Transfer Method

▶ Transfer Types, Methods, and File Types	4-7
▶ How to Choose a File Transfer Method	4-12

- ▶ How to Identify the Files to Move 4-13
- ▶ File Checklist 4-15
- ▶ How to Select a Time to Move Files 4-19

Preparing to Move Files

Overview

- ▶ Introduction 5-2

Preparing the Destination Environment

- ▶ Overview 5-4
- ▶ How to Create Empty ISAM Files 5-5

Preparing the Source Environment

- ▶ Overview 5-6
- ▶ The Workstation Preparation Process 5-7

Moving Files

- ▶ Introduction 6-2

Moving ASCII and Binary Files

- ▶ Overview 6-4
- ▶ How to Move a Single ASCII or Binary File 6-6
- ▶ How to Move Several ASCII or Binary Files 6-7

Moving ISAM Files

- ▶ Overview 6-8
- ▶ How to Unload an ISAM File 6-14
- ▶ How to Load an ISAM File 6-15
- ▶ How to Move ISAM Files to Another Machine 6-17

Moving Trading Partnership Records and Related Files

- ▶ Overview 6-19
- ▶ How to Move All Trading Partnership Records 6-22
- ▶ How to Move Selected Trading Partnership Records 6-24
- ▶ How to Move TRADACOMS Supplementary TP Records 6-27
- ▶ How to Move Organization Records 6-29
- ▶ Moving Contact Records 6-30
- ▶ How to Move Standard Cross Reference Records 6-31

Moving Maps and Map-related Files

- ▶ Overview 6-32
- ▶ How to Move Application Integration Maps 6-33
- ▶ How to Move Visual Mapper Maps 6-34
- ▶ How to Move the Generic Synonym List 6-35
- ▶ How to Move Specific Synonym Lists 6-37
- ▶ How to Move a Thesaurus List 6-39

- ▶ Moving Other Process Files6-41
- ▶ Process File Checklist6-41
- ▶ How to Move DOS Batch Files6-43

Cleaning Up After the Move

Overview

- ▶ Introduction7-2
- ▶ The Clean-Up Process7-3

Procedures

- ▶ How to Reset the Interchange and Group Control Numbers7-5
- ▶ How to Update the Interchange and Group ID Codes7-6
- ▶ How to Update the Interchange Control Header Field7-7
- ▶ How to Edit Files with Absolute Path Names7-8

Index

About This Guide

Contents	▶ Welcome	ii
	▶ Chapter Contents	iii
	▶ Related Publications	iv
	▶ Documentation Conventions	vii

Welcome

Welcome to Sterling Commerce's Gentran:Server electronic commerce software for the Workstation product level.

What is in this guide

This guide provides instructions for maintaining your Gentran:Server installation. It also provides troubleshooting information to help you determine the cause and solution of problems that may occur with your installation.

Who should use this guide

This guide is for administrators charged with managing electronic commerce application software.

It can also be used by Gentran:Server users to determine the correct response to error or warning messages.

Chapter Contents

This table describes the contents of chapters within this Maintenance and Troubleshooting Guide.

Chapter Title	Description
About This Guide	Explains the content, organization, and conventions in this guide. Explains how to get help if you cannot solve a problem by using the information provided in this guide.
Introduction	Describes the capabilities of each level of the Gentran:Server product line and describes supported hardware and software configurations. The chapter then provides a basic understanding of the elements of Gentran:Server.
System Messages	Lists warning and error messages you may encounter when using Gentran:Server. Explains the meaning of the message and the action you should take to correct the situation. Includes UNIX and DISAM error messages.
Moving Files Overview	Describes the process for moving files.
Planning the Move	Explains how to describe the source and destination environments and choose a file transfer method.
Preparing to Move Files	Describes preliminary actions required before moving Gentran:Server files.
Moving Files	Explains how to move Gentran:Server files from one stand-alone PC to another.

Related Publications

Gentran:Server documentation

This table describes additional documentation for the Gentran:Server software.

Document	Description
Upgrade and Data Conversion Guide	Instructions for upgrading from previous versions of Gentran:Server Workstation and Gentran:Server for UNIX. Also includes instructions for converting the files that are part of the upgrade.
Installation Checklist	Description of the recommended sequence in which you should install and configure system components.
Gentran:Server Workstation Getting Started Guide	Instructions for installing the Gentran:Server Workstation software and performing setup tasks. Instructions for starting and exiting Gentran:Server and for setting preferences and default values. Also includes instructions for checking files in and out and saving files.
Application Integration User's Guide	Instructions for performing mapping and translation tasks using the Gentran:Server Application Integration Mapper.
Mapping and Translation Guide	Instructions for performing mapping and translation tasks using the Gentran:Server Visual Mapper. Note This guide is provided only if you maintain maps created with Gentran:Server version 5.3 or prior.
NCPDP User's Guide	Instructions for mapping and translating NCPDP files with the Application Integration system.
XML User's Guide	Instructions for mapping and translating XML files with the Application Integration system. Note This guide is provided only if your organization has the Gentran:Server XML translation option.

(Continued on next page)

(Contd) Document	Description
ODBC User's Guide	Instructions for mapping and translating ODBC files with the Application Integration system. Note This guide is provided only if your organization has the Gentran:Server ODBC translation option.
GENCOD User's Guide	Instructions for mapping and translating GENCOD files with the Application Integration system and the Visual Mapper.
VDA User's Guide	Instructions for mapping and translating VDA files with the Application Integration system and the Visual Mapper.
Technical Reference Guide	Describes processes, lists command-line commands in alphabetical order, and describes file record layouts and data type formats.
Online Help	Context-sensitive help screens describing the Gentran:Server dialog boxes for the mapping and translation features. Also includes procedures for using the mapping and translation and the data flow administration software.

**Other
documentation**

This table lists other documentation you may need to refer to when installing and setting up Gentran:Server.

Description	Source
Instructions for installing and using the operating system on your computer.	Your hardware vendor The computer manufacturer

Documentation Conventions

Typographic conventions

This table describes the typographic conventions used in this guide.

Convention	Use
Italics	<p>This typeface is used for titles of other manuals and documents, names of files and file extensions, and to emphasize important information.</p> <p>Example <i>Gentran:Server for UNIX and Workstation Application Integration User's Guide</i></p>
Bold	<p>Bold type is used for program names, key terms the first time they are used within a chapter, and entries you are to make on-screen.</p> <p>Example A password is a set of characters a user must enter to gain access to a system.</p>

Symbols used within syntax statements

This table describes symbols used within syntax statements.

Symbol	Use
< >	<p>Substitute a value for any term that appears within angle brackets. Do not enter angle brackets unless specifically told to do so.</p> <p>Example rm <filename> means that you should type the name of the file you want to delete.</p>
{ }	<p>Braces indicate a required part of a statement. Do not enter the braces.</p> <p>Example {-f <filename>} means you must enter the f parameter followed by a filename.</p> <p style="text-align: right;">(Continued on next page)</p>

(Contd) Symbol	Use
[]	Brackets indicate an optional part of a statement. Do not enter the brackets. Example [-f <filename>] means you could type the f parameter followed by a filename, but you are not required to do so.
...	An ellipse indicates that the immediately preceding item can be repeated indefinitely. Do not enter the ellipse. Example -e... means that you can repeat -e with other values.
()	Parentheses should be entered as shown. They are part of the syntax of a statement and are not special symbols. Example (n) means that you should type a number enclosed by parentheses.

Introduction

Contents

▶ Overview	2
▶ Product Levels	3
▶ Log Files and Temporary Files	5

Overview

Introduction

This chapter describes the capabilities of each level of the Gentran:Server product line and then describes supported hardware and software configurations.

Product Levels

Product level and feature table

This table lists the levels of the Gentran:Server product suite, and provides a brief description of the features available at each level. The table lists product levels in order of increasing functionality.

Product Level	Description
Gentran:Server Workstation	<p>Provides mapping and translation software for personal computers running Microsoft Windows 98[®], Windows 2000[®], or Windows NT 4.0.</p> <p>This software includes graphical interface for:</p> <ul style="list-style-type: none"> ▶ Creating and editing maps ▶ Managing trading partnership information ▶ Managing audit data ▶ Managing archive data. <p>It also includes a Communications Toolkit utility which, combined with Cleo Communications, automates data communications between Gentran:Server Workstation and Trading Partners.</p>
Gentran:Server for UNIX	<p>Provides a Microsoft Windows 98[®], Windows 2000[®], or Windows NT 4.0 interface on client PCs to enable users to run mapping and translation software on a UNIX host.</p> <p>Includes a Security Administration utility for managing access to user accounts, files, and software functions on the host computer.</p>
Gentran:Server for UNIX with Process Control Manager	<p>Adds basic data routing capabilities on the UNIX host. Enables process control for basic inbound and outbound data flows.</p> <p>Includes a Life Cycle utility that, combined with additional database software, creates audit records of each process performed on your data.</p>
Gentran:Server for UNIX with EC Workbench	<p>Provides sophisticated data routing capabilities on the UNIX host. Enables process control for multiple data flows. Includes the Life Cycle utility.</p> <p style="text-align: right;">(Continued on next page)</p>

(Contd) Product Level	Description
Gentran:Server for UNIX with Advanced Data Distribution	Adds the mailbox capabilities of Gentran:Server Advanced Data Distribution software to Gentran:Server with EC Workbench.

Note

Gentran:Server also supports the Gentran:Server WebSuite option.

**Hardware and
operating
system
requirements**

See the Gentran:Server installation instructions for hardware and operating system requirements.

Log Files and Temporary Files

Introduction The directory to which the system directs the temporary files and log files that it produces depends upon the product level and whether you are operating in attended mode or unattended mode.

Workstation level This table summarizes the location of log files and temporary files for Gentran:Server for Workstation product level.

File Type	Workstation PC
Temporary (temp) files	Wrktmp subdirectory of the path you have configured for User Files on the Set Up Directories dialog box.
Log files	The directory of the path you have configured for Report/Log files on the Set Up Directories dialog box.

System Messages

Contents

- ▶ Overview 2
 - ▶ Messages in Numerical Order 4
 - ▶ Messages in Alphabetical Order (Starting with Variables) 72
 - ▶ Messages in Alphabetical Order (Not Starting with Variables) 79
 - ▶ Gentran:Server Return Codes 166
 - ▶ UNIX Error Codes 171
 - ▶ DISAM Error Codes 174
-

Overview

Introduction

This chapter lists the messages you might see while using Gentran:Server's mapping and translation features.

How messages are organized

The messages in this chapter are listed according to the following guidelines:

- Messages with numbers are listed in numerical order. All others are listed in alphabetical order.
- Two or more messages with the same number are listed in alphabetical order by the program part. Articles ('a' and 'the') are included in the alphabetization.
- Variables (surrounded by < >) appear first in the alphabetical list.

Information included

This section identifies the information provided in addition to the message text.

Message type

This table describes the types of messages Gentran:Server displays.

Message Type	Function
Error	Indicates that Gentran:Server cannot perform this process or has stopped performing the current process.
Warning	Alerts you to a possible problem but allows processing to continue.
Prompt	Elicits additional information that Gentran:Server needs in order to continue the process.
Informational message	Provides feedback about, or the status of, the process just completed.

Program module

The program module is the part of Gentran:Server issuing the message. This is obvious in some cases, but not in others. For example, most messages encountered while creating or editing mapping instructions are issued by the compiler.

(Continued on next page)

Explanation

Possible reasons for the error or warning or a detailed discussion of the type of information the message presents.

Procedure

The procedure or response you must follow or give to continue processing and/or ensure the integrity of your data.

Message conventions

Messages may contain variables. Variables are enclosed in angle brackets (< >) and indicate the position of the specific data that prompted Gentran:Server to display the message.

Example

Input file: <path>\<file name>

The message displays the actual path and name of the file in place of the variables <path> and <file name>.

Messages in Numerical Order

Contents This section lists numerical messages. These messages appear in the *xlcntl.err* file stored in the Gentran:Server temporary directory.

References

- ▶ To find a message that begins with a variable, see the topic [Messages in Alphabetical Order \(Starting with Variables\)](#) in this chapter.
- ▶ To find a message that begins with an alphanumeric character (neither a number, nor a variable), see the topic [Messages in Alphabetical Order \(Not Starting with Variables\)](#) in this chapter.

000 Record encountered for set in error

TP Code: <TP Code>

Set Id: <Set ID>

Message Type: Warning

Program Module: ediarc

Explanation:

The translator was unable to translate a set because it contained errors. The translator created no output for this set.

Gentran:Server wrote a record to *edistat.i/edistat.o* indicating the error. The **ediarc** program then read the record and wrote a message to *xlcntl.err* instead of archiving the data.

Procedure:

Use this procedure in response to this message:

Step	Action
1	Look at <i>xlcntl.err</i> to find the set identified by its Trading Partnership Code and Set ID.
2	Determine the nature of the errors, then decide whether the errors warrant retranslating the data.
3	Correct the errors and retranslate the data.

(Continued on next page)

000 **Input file:** <path>\<file name>
Output file: <path>\<file name>

Message Type: Informational
Program Module: edifrmat

Explanation:

The **edifrmat** program processed the specified input file and wrote the results to the specified output file.

Procedure:

No action is necessary. You can verify that the output file contains the data it should if the circumstances warrant that action.

000 **Translated interchanges without errors:** <number>
Untranslated interchanges with errors: <number>

Message Type: Informational
Program Module: lftran

Explanation:

This message appears at the end of the *xlcntl.err* file after TRADACOMS translation is complete.

Procedure:

No action is necessary.

(Continued on next page)

001 **Number of document sets archived: <number>**
Number of FA records processed: <number>
Number of records/sets not processed: <number>
Total sets/records: <number>

Message Type: Informational
Program Module: ediarc

Explanation:
This message provides the results of the **ediarc** command.

Procedure:
Use this procedure in response to this message:

Step	Action	
1	Verify that ediarc was able to archive all document sets.	
2	Check the number of records/sets not processed.	
3	Use this table to determine your next action.	
	IF the number of unprocessed record/sets is...	THEN...
	Zero (0)	Take no further action.
	One (1) or more	1. Review the ediarc error messages for more detailed information on each record/set not archived 2. Review the information on those error messages and the actions you should take.

(Continued on next page)

004 Compliance check error(s):
Message Type: Warning or Error
Program Module: Iftran

Set up notes

If you select the Accept Sets with Errors option on either the Inbound or Outbound Translation Information part of the Trading Partnership Record, the translation continues and disregards the warning.

Also, the **Accept Messages /Sets with error(s)** option on the **Inbound** or **Outbound EDI Information** tab of the **Trading Partnership Editor** must be inactive to prevent Gentran:Server from accepting or sending sets that contain errors.

Topic organization

There are several errors that prompt Gentran:Server to display this message. Each error is identified and explained below. Where appropriate, examples are provided. Additional procedures are provided when necessary.

Procedure:

Use one of these responses if you receive this message:

IF...	THEN...
You accept or reject the inbound data and send functional acknowledgements or You accept the inbound data, but do <i>not</i> send functional acknowledgements	Further action is not required. Note Although not required, you should contact your trading partner and ask them to correct the error if you reject the data.
You reject the inbound data and do <i>not</i> send functional acknowledgements	Notify your trading partner of the error and ask them to send a corrected set of data. (Continued on next page)

(Contd) IF...	THEN...
Your trading partner accepts your outbound data	Further action is not required.
Your trading partner rejects your outbound data,	Follow these steps to correct the data. 1. Modify the implementation guide to correct the error 2. Correct the map and compile the new version 3. Translate the data using the new version of the map 4. Send the corrected version to your trading partner.

(Continued on next page)

Error types:

This table describes the different compliance errors. The table also provides examples and specific correction notes where appropriate.

Error	Description
Conditional element missing	<p>The data lacks one or more conditional elements. Conditional elements are dependent on other elements. Conditional elements must be present in the data when the elements requiring them are present.</p> <p>Example An element containing a number is present, but the element specifying whether the number is a telephone number or a fax number is absent.</p> <p>Specific correction Add missing conditional element or mark it used. If you have no data for this element, map a literal, spaces, or zeros.</p>
Element too long	<p>The inbound data contains one or more elements that are longer than the maximum length allowed by the standard, IG, or Gentran:Server. Gentran:Server allows a maximum length of 512 characters per element.</p>
Element too short	<p>The data contains one or more elements that are shorter than the minimum length required by the standard, IG, or Gentran:Server.</p> <p>Specific correction Check to see if another message indicates that data was truncated. If no data was truncated, you can send this data. You should correct the IG and map used and compile the map before using it again.</p> <p>If data was truncated, refer to that message in this table for the specific correction.</p> <p style="text-align: right;">(Continued on next page)</p>

(Contd) Error	Description
Exclusion condition violated	<p>The data contains one or more exclusion condition elements even though the specified elements are present. Exclusion condition elements are dependent on other elements. Exclusion condition elements must <i>not</i> be present in the data when the elements requiring their exclusion are present.</p> <p>Example: Two elements specifying a payment currency exist in the data. One element specifies that payment be in American dollars. Another specifies that payment be in British pounds.</p> <p>Specific correction Delete the unnecessary element from the implementation guide.</p>
Invalid character in element	<p>One or more elements contain characters defined as invalid by the standard or IG. Each element in a standard or IG has a required data type. Only certain characters are valid for each data type.</p> <p>Example: Elements with the data types of N and R data types can contain only a plus (+), a minus (-), or a decimal point (.). Any alphabetic character or other symbol is invalid.</p> <p>Specific correction Correct the application data and/or the application description, if necessary</p>
Invalid code	<p>Gentran:Server found one or more elements with invalid element ID codes in the data. There is a list of allowable element ID codes for each element of type ID Gentran:Server validated the element ID codes against this list.</p> <p style="text-align: right; color: red;">(Continued on next page)</p>

(Contd) Error	Description
Invalid date	<p>The data contains one or more elements with data type DT that contain invalid dates.</p> <p>Example The data may include month 14 or day 56 (for non-Julian dates).</p> <p>Note If the source date format is different from the destination date format, Gentran:Server converts the data.</p>
Invalid time	<p>The data contains one or more elements with data type TM that contain invalid times.</p> <p>Example The data may include Julian day 555.</p> <p>Notes If the source time format is different from the destination time format, Gentran:Server converts the data.</p>
Mandatory element missing	<p>The data lacks one or more of the mandatory elements required by the standard, or a non-mandatory segment was not activated in the map. Mandatory elements must be present in the data. These are mandatory elements.</p> <p>Specific correction Add missing conditional element or mark it used. If you have no data for this element, map a literal, spaces, or zeros. If you have data, activate the segment or element.</p>
Mandatory loop missing	<p>The data lacks the beginning segment for one or more mandatory loops required by the standard. Mandatory loops must be present in the data.</p> <p>Specific correction Add the missing mandatory loop(s). If you have no data for an element, map a literal, spaces, or zeros.</p> <p style="text-align: right;">(Continued on next page)</p>

(Contd) Error	Description
Mandatory segment missing	<p>The data lacks one or more mandatory segments required by the standard. Mandatory segments must be present in the data.</p> <p>Specific correction Add the missing mandatory segments. If you have no data for an element, map a literal, spaces, or zeros.</p>
Too many elements	<p>The data contains one or more segments with too many elements, as defined by the standard. The standard determines which elements each segment can contain.</p> <p>Specific correction For inbound data, compare the map you are using for the translation against the standard you are using. Make sure that your map contains the same number of elements as is required by the standard. If your map is missing elements, add them back.</p> <p>Note Although not required, you should contact your trading partner and ask them to correct the error if you determine that they are sending extra data.</p>

007 Processing segment: <segment>

Message Type: Informational

Program Module: Iftran

Explanation:

This message indicates which segment the translator is processing. Run **Iftran** with the *-d* parameter to write this message to the *xlcntl.err* file.

Note:

When you run **Iftran** with the *-d* parameter, you can read the processing messages in the *xlcntl.err* file to determine on what segment the translation failed.

(Continued on next page)

008 Memory allocation error

Message Type: Error
Program Module: Iftran

Explanation:

There is not enough memory free to continue the translation.

Procedure:

Use this procedure in response to this message:

Step	Action
1	Close all other open applications.
2	Run the translation again.

015 Do you wish to automatically change all mappings associated with source <source label> to use this synonym list?

Message Type: Prompt
Program Module: Synonym Editor

Explanation:

Gentran:Server must know whether to use or not use the synonym list for each occurrence of this source item. You can assign a synonym to a source item used in one or more mapping instructions.

Procedure:

Use this procedure in response to this message:

If you want...	Then...
Gentran:Server to use the synonym list for this same source item in every mapping instruction in which the source item appears	Click Yes
Gentran:Server to <i>not</i> use the synonym list for any occurrence of this source item	Click No .

Note

You can assign a synonym to a source item in a particular mapping instruction without affecting the source item in other mapping instructions using the **generic/specific synonym of source** mapping operation. Use the **Mapping Instructions** window to access this operation.

(Continued on next page)

020 Incorrect line item count in CTT: Data = <number>, Actual = <number>

Message Type: Warning
Program Module: Iftran

Explanation:
Gentran:Server found an error in the line item count in the CTT segment.

Note
This error does not stop the translator from completing the translation.

Procedure:
Use one of these responses if you receive this message:

IF...	THEN...
You accept the data	Further action is not required.
You reject the data	Notify your trading partner of the error and ask them to send a corrected data set.
Your trading partner accepts the data	Further action is not required.
Your trading partner rejects the data.	Translate the data again and check the CTT segments. If they are correct, resend the corrected data. If not, correct the map, translate the data, and send the new data to your trading partner.

(Continued on next page)

021 Incorrect hash total in CTT: Data = <number>,
Actual = <number>

Message Type: Warning
Program Module: Iftran

Explanation:
Gentran:Server has found an error in the hash total in the CTT segment.

Note
This error does not stop the translator from completing the translation.

Procedure:
Use one of these responses if you receive this message:

IF...	THEN...
You accept the data	Further action is not required.
You reject the data	Notify your trading partner of the error and ask them to send a corrected data set.
Your trading partner accepts the data	Further action is not required.
Your trading partner rejects the data.	Translate the data again and check the CTT segments. If they are correct, resend the corrected data. If not, correct the map, translate the data, and send the new data to your trading partner.

(Continued on next page)

022 Message # seq error: This message = <control num>, Last message = <control num>

Message Type: Warning
Program Module: Iftran

Explanation:

Gentran:Server has found an error in the sequence of set control numbers. The file may contain duplicate data or be incomplete.

This error stops Gentran:Server from completing the translation only if you use **Iftran** with the S parameter. If the translation stops, Gentran:Server writes the input data to *boxin.err* when this error occurs.

Procedure:

Use one of these responses if you receive this message:

IF...	THEN...
You accept the inbound data Note You should accept the inbound data only if you are certain it is complete.	<ol style="list-style-type: none"> 1. Find and remove any duplicate data 2. Correct the control numbers 3. Open the Trading Partner Maintenance dialog box. 4. Click the Inbound Translation Information Tab and change the set control number to match the control number of the last set.
You reject the inbound data	Notify your trading partner of the error and ask them to send corrected data.
Your trading partner accepts your outbound data	Further action is not required.
Your trading partner rejects your outbound data	Translate the data again and send the corrected data.

(Continued on next page)

023 Group # seq error: This group = <control num>, Last group = <control num>**Message Type:** Warning**Program Module:** Iftran**Explanation:**

Gentran:Server has found an error in the sequence of group control numbers. The file may contain duplicate data or be incomplete.

This error stops Gentran:Server from completing the translation only if you use **Iftran** with the S parameter. If the translation stops, Gentran:Server writes the input data to *boxin.err* when this error occurs.

Procedure:

Use one of these responses if you receive this message:

IF...	THEN...
You accept the inbound data Note You should accept the inbound data only if you are certain it is complete.	<ol style="list-style-type: none"> 1. Find and remove any duplicate data 2. Correct the control numbers 3. Open the Trading Partner Maintenance dialog box. 4. Click the Inbound Translation Information Tab and change the group control number to match the control number of the last group.
You reject the inbound data	Notify your trading partner of the error and ask them to send corrected data.
Your trading partner accepts your outbound data	Further action is not required.
Your trading partner rejects your outbound data	Translate the data again, then send the corrected data.

(Continued on next page)

024 Interchange # seq error: This interchange = <control num>, Last interchange = <control num>

Message Type: Warning
Program Module: Iftran

Explanation:

Gentran:Server has found an error in the sequence of set control numbers. The file may contain duplicate data be incomplete.

This error stops Gentran:Server from completing the translation only if you use **Iftran** with the S parameter. If the translation stops, Gentran:Server writes the input data to *boxin.err* when this error occurs.

Procedure:

Use one of these responses if you receive this message:

IF...	THEN...
You accept the inbound data Note You should accept the inbound data only if you are certain it is complete.	<ol style="list-style-type: none"> 1. Find and remove any duplicate data 2. Correct the control numbers 3. Open the Trading Partner Maintenance dialog box. 4. Click the Inbound Translation Information Tab and change the interchange control number to match the control number of the last interchange.
You reject the inbound data	Notify your trading partner of the error and ask them to send corrected data.
Your trading partner accepts your outbound data	Further action is not required.

(Continued on next page)

049 **Application data error: <error type>**
Output record: <record ID>, Output field: <field name>

Message Type: Error
Program Module: Iftran

Explanation:

The translator found an error in your application data. A description of the error replaces the <error type> variable shown in the example above. For more information about the second line of the message, refer to error 076.

Procedure:

Use this procedure in response to this message:

Step	Action
1	Check the record and field indicated.
2	Correct the data and/or the data description as necessary.
3	If changes are made, compile the map and translate the data again.

(Continued on next page)

050 Interchange control number mismatch. ISA12 = <interchange control number>
IEA02 = <interchange control number>

Message Type: Error
Program Module: Iftran

Explanation:

The ISA Interchange Header segment does not match the control number in the IEA Interchange Trailer segment.

Note

This error may be due to duplicate or missing data.

Procedure:

Use one of these responses if you receive this message:

IF...	THEN...
You accept the inbound data Note You should accept the inbound data only if you are certain it is complete.	1. Find and remove any duplicate data. 2. Manually correct the control numbers.
You reject the inbound data	Notify your trading partner of the error and ask them to send corrected data.

(Continued on next page)

053 Invalid group count: IEA01 = <number of groups counted>
Actual = <number of groups present> Interchange Control # <control number>

Message Type: Error
Program Module: Iftran

Explanation:
The inbound translator found an invalid group count.

Note
The translator wrote an error message to *xlcntl.err*, the invalid interchange to *boxin.err*, and did not include the invalid interchange in the output file.

Procedure:
Use this procedure in response to this message:

Step	Action
1	Review the invalid interchanges in the <i>boxin.err</i> file to determine why the group count is invalid.
2	Notify your trading partner of the error and ask them to send corrected data.

(Continued on next page)

060 Invalid segment count: SE01 = <number of segments counted>
Actual = <number of segments present> Set Control # <set control number>

Message Type: Error
Program Module: Iftran

Explanation:

The translator found an invalid segment count. The translator wrote an error message to *xlcntl.err*, the invalid group to *boxin.err* or *boxout.err*, and omitted the invalid group from the output file.

Procedure:

Use this procedure in response to this message:

Step	Action	
1	Review the invalid interchanges in the <i>boxin.err</i> or <i>boxout.err</i> file to determine why the segment count is invalid.	
2	Use this table to determine your next action.	
	IF you are translating...	THEN...
	Outbound data	Correct your data and run the translation again.
	Inbound	Notify your trading partner of the error and ask them to send corrected data.

061 '-A' option with invalid .app file = <file name>

Message Type: Error
Program Module: Iftran

Explanation:

The file name entered after the A parameter in the **Iftran** command was invalid. You must enter the name of a valid application file before Gentran:Server can take the trading partnership code from the application description during multiple outbound translations.

Procedure:

To correct the error, run Iftran again. Use the A parameter and a valid application file name.

(Continued on next page)

062 '-A' option with no TP description, .app file = <file name>**Message Type:** Error**Program Module:** Iftran**Explanation:**

The file name entered after the A parameter in the **Iftran** command selects a file that does not contain a field marked as the Trading Partnership Code. This file must contain a field marked as the Trading Partnership code.

Procedure:

Use this procedure in response to this message:

IF...	THEN...
The application data contains the Trading Partnership Code	<ol style="list-style-type: none">1. Open the map and select the Application Editor2. Mark the field containing the Trading Partnership Code as the TP Code.3. Save the application description4. Save the map5. Compile and translate the new map.
The application data does not contain the Trading Partnership Code	<ol style="list-style-type: none">1. Separate the data. Create one file for each separate trading partner.2. Run Iftran again, using the T parameter to specify the Trading Partnership Code.

(Continued on next page)

063 Put of environment variable <string> failed**Message Type:** Error**Program Module:** Iftran**Explanation:**

Gentran:Server was unable to map data to this environment variable due to insufficient amount of available memory.

Procedure:

Use this procedure in response to this message:

Step	Action
1	Close other applications that may be running.
2	Run the translation again.

064 Doc specifier error: <string>**Message Type:** Error**Program Module:** Iftran**Explanation:**

One of the values used to create the document specifier number is not available, making it incomplete. Gentran:Server creates a unique specifier number for each document by concatenating meaningful values. If, for example, the TP code is not attached to the specifier table, the specifier number is invalid.

Procedure:

Use this procedure in response to this message:

Step	Action
1	Return to the document specifier part of Gentran:Server.
2	Check the document specifier table for this document.
3	Set up or correct that table if necessary.
4	Reprocess the document if necessary.

(Continued on next page)

066 Unexpected record: <first 19 characters of record>,
Record number: <record number> Set Number: <set control number>
Possible segment out of order.
This record will be ignored.

Message Type: Warning
Program Module: Iftran

Explanation:

Gentran:Server has found a record that it cannot identify. The record either has a record ID that does not match any record in the application description or is a defined record but is not expected in the current sequence. This may be the result of incorrect or missing loop markers. Gentran:Server does not process incomplete records

This error does not stop the translation process.

Procedure:

Use this procedure in response to this message:

Step	Action
1	Correct the application data and/or the application description using the record number, the set number information, and the first 19 characters of the record.
2	Compile and translate the map again, if necessary.

(Continued on next page)

067 Truncated data in record: <record name>, field: <field name>**Message Type:** Warning**Program Module:** Iftran**Explanation:**

The source item data exceeded the maximum length of the destination item and was truncated to fit. This error does not stop the translation process.

Procedure:

Use one of these responses if you receive this message

IF...	THEN...
<p>You accept or reject the inbound data and send functional acknowledgements or</p> <p>You accept the inbound data, but do <i>not</i> send functional acknowledgements</p>	<p>Further action is not required.</p> <p>Note</p> <p>Although not required, you should contact your trading partner and ask them to correct the error if you reject the data.</p> <p>Also, you can use the mapping operator Place to map the most important part of the source item to the destination.</p>
<p>You reject the inbound data and do <i>not</i> send functional acknowledgements</p>	<p>Notify your trading partner of the error and ask them to send a corrected set of data.</p>
<p>Your trading partner accepts your outbound data</p>	<p>Further action is not required.</p>
<p>Your trading partner rejects your outbound data</p>	<p>Chose one of the following responses:</p> <ul style="list-style-type: none"> ▶ Ask your Trading Partner to modify their application data. ▶ Modify your application data to conform to the maximum length allowed by the standard for the field/element.

(Continued on next page)

068 Failed to allocate Translate Table memory.

Message Type: Error
Program Module: Compiler

Explanation:

The map was compiled for a different platform and Gentran:Server was unable to use it for translation.

Procedure

To correct the error, compile the map again for the platform on which you will be running the translation.

071 Translate table <table name> contains no mappings

Message Type: Error
Program Module: Compiler

Explanation:

The open map contains no mapped items. A map must have at least one mapped item before the compiler in Gentran:Server can run.

Procedure:

Use this procedure in response to this message:

Step	Action
1	Run AutoMap or manually map the desired items.
2	Click Tools on the menu bar.
3	Click Compile for Windows/PC or Compile for UNIX on the Tools menu.

(Continued on next page)

072 isrewrite error = <error number>

Message Type: Error
Program Module: Iftran

Explanation:

Gentran:Server found an error in the index (.idx) part of the Trading Partnership file while attempting to write to one of the trading partner records.

Procedure:

To correct the error, run **dcheck** from the command line or a batch file.

Comment

The command line program **dcheck** checks program or repairs DISAM indexed files. See the chapter [Command Reference](#) in the *Gentran:Server for UNIX and Workstation Technical Reference Guide* for information about the parameters to use with **dcheck**.

076 Conditioning data for input record: <record ID>, field: <field name>

Message Type: Error
Program Module: Iftran

Explanation:

The translator encountered an error while evaluating conditional mappings and cannot translate the data. This message identifies the location of the application error by input record ID and field name of the source item and is displayed with error 049, which identifies the error type, the output record ID, and field name.

Procedure:

Use this procedure in response to this message:

Step	Action
1	Review your input data for the record and field specified in the second part of this message pair.
2	Correct the data as necessary.

(Continued on next page)

080 Failed to open file: <file name>**Message Type:** Error**Program Module:** Iftran**Explanation:**

Gentran:Server cannot find or open the specified file.

Procedure:

Use this procedure in response to this message:

Step	Action	
1	Determine the existence and current location of the file. If the file no longer exists, you must recreate it.	
2	Determine whether the file is in the correct location.	
3	Use this table to determine your next action.	
	IF the file...	THEN...
	Exists, but the correct directory does not	Create the directory and move the file.
	And the directory both exist, but the file is not in the correct directory	Move the file.
Has the correct name and is in the correct directory	Check the access permissions for the file and directory and change them as needed.	

(Continued on next page)

100 **Removed <number> interchange envelope(s)**
Sender Interchange ID:<Interchange ID>
Receiver Interchange ID:<Interchange ID>
New Filename: <file name>
Message Type: Informational
Program Module: envelope

Explanation:

Gentran:Server enveloped copies of the existing interchange envelopes into a single file. The program then removed the original interchange envelopes.

Procedure:

No action needed.

100 **Possible header <header name> near <offset> rejected because:**
<reason for rejection>
<May have been newline terminated; but stripped with -l>

Message Type: Error
Program Module: edifmat

Explanation:

The **edifmat** program could not process the header identified (<header name>) for the reason described (<reason for rejection>). The **edifmat** program put the header into *edifmat.not* and omitted it from the output file.

Procedure:

If this message includes the statement, "May have been newline terminated; but stripped with -l", run **edifmat** again without using the 'l' parameter.

Note

If the standard version is EDIFACT, the message will read "Defined Terminator <terminator> could not be found." This means your trading partner used an invalid terminator. Other possible messages include:

1. "Separator and Terminator are the same character"
2. "Separator, Sub-separator or Terminator is invalid"

Notify your trading partner and ask them to send corrected data.

(Continued on next page)

101 Records in input file <file name> are not newline terminated**Message Type:** Error**Program Module:** lftran**Explanation:**

Gentran:Server found a record that was not newline terminated during translation as required. The translation process stopped at the set containing the error. All data successfully translated was written to the output file.

Procedure:

Use this procedure in response to this message:

IF...	THEN...
You are translating inbound data	<ol style="list-style-type: none">1. Delete the sets that were translated from the input file2. Run edifrm on the data3. Run the translation again.
You are translating outbound data	<ol style="list-style-type: none">1. Delete the output file2. Edit the input file (flat file or application description file) and put new line characters at the end of each record3. Run the translation again.

(Continued on next page)

**102 Max Occurrence for segment <segment name> exceeded
at file line # <line number>
Set Control # <set control number>**

Message Type: Warning or Error
Program Module: Iftran

Explanation:

The EDI data includes more of the identified segments (<segment name>) than are permitted by the standard used. The program identifies the number of the line in the file that contains the first occurrence of the segment that exceeds the maximum number of occurrences allowed.

Set up notes

If you select the Accept Sets with Errors option on either the Inbound or Outbound Translation Information part of the Trading Partnership Record, the translation continues and disregards the warning.

Also, the **Accept Messages /Sets with error(s)** option on the **Inbound** or **Outbound EDI Information** tab of the **Trading Partnership Editor** must be inactive to prevent Gentran:Server from accepting or sending sets that contain errors.

Procedure:

Use one of these responses if you receive this message:

IF...	THEN...
You accept or reject the inbound data and send functional acknowledgements or You accept the inbound data, but do <i>not</i> send functional acknowledgements	Further action is not required. Note Although not required, you should contact your trading partner and ask them to correct the error if you reject the data.
You reject the inbound data and do <i>not</i> send functional acknowledgements	Notify your trading partner of the error and ask them to send a corrected set of data. <div style="text-align: right; color: red;">(Continued on next page)</div>

(Contd) IF...	THEN...
Your trading partner accepts your outbound data	Further action is not required.
Your trading partner rejects your outbound data,	Follow these steps to correct the data. 1. Modify the implementation guide to correct the error 2. Correct the map and compile the new version 3. Translate the data using the new version of the map 4. Send the corrected version to your trading partner.

(Continued on next page)

103 Segment failed conditional element compliance check:

<segment name> <segment number>

Rule: <conditional element rule>

Message Type: Warning or Error**Program Module:** Iftran**Explanation:**

The data contains one or more elements that violate a conditional element rule included in the standard used.

Set up notes

If you select the Accept Sets with Errors option on either the Inbound or Outbound Translation Information part of the Trading Partnership Record, the translation continues and disregards the warning.

Also, the **Accept Messages /Sets with error(s)** option on the **Inbound** or **Outbound EDI Information** tab of the **Trading Partnership Editor** must be inactive to prevent Gentran:Server from accepting or sending sets that contain errors.

Procedure:

Use one of these responses if you receive this message:

IF...	THEN...
<p>You accept or reject the inbound data and send functional acknowledgements or</p> <p>You accept the inbound data, but do <i>not</i> send functional acknowledgements</p>	<p>Further action is not required.</p> <p>Note Although not required, you should contact your trading partner and ask them to correct the error if you reject the data.</p>
<p>You reject the inbound data and do <i>not</i> send functional acknowledgements</p>	<p>Notify your trading partner of the error and ask them to send corrected data.</p> <p style="text-align: right; color: red;">(Continued on next page)</p>

(Contd) IF...	THEN...
Your trading partner accepts your outbound data	Further action is not required.
Your trading partner rejects your outbound data,	<p>Follow these steps to correct the data.</p> <ol style="list-style-type: none"> 1. Modify the implementation guide to correct the error 2. Correct the map and compile the new version 3. Translate the data using the new version of the map 4. Send the corrected version to your trading partner.

107 **Error: <message version> is not a valid message version for standard version <standard version>**
Message Type: Error
Program Module: Iftran

Explanation:

The message version for the TRADACOMS trailer documents is not valid for this interchange.

Procedure:

Notify your trading partner of the problem and ask them to send corrected data.

(Continued on next page)

126 EDI data not found.
Any data found in input file is in temporary file <path>\edifrmfmat.not
Message Type: Error
Program Module: edifrmfmat

Explanation:

The **edifrmfmat** program could not find any EDI data in the input file. The **edifrmfmat** processes only EDI data and writes all other data into *edifrmfmat.not*. The message provides the location of this file <path>.

Procedure:

Use this procedure in response to this message:

Step	Action	
1	Read the <i>edifrmfmat.not</i> file to see what data the input file contains.	
2	Use this table to determine your next action.	
	IF you specified...	THEN...
	An incorrect name and/or path for the input file	Run edifrmfmat again, specifying the correct file name and path.
	The correct name of the file sent by your trading partner	Contact your trading partner and ask them to send you a file containing the valid EDI data.

(Continued on next page)

180 Failed to open file: <EDI file name>
 Tpcode: <TP Code> Interchange Ctl No: <control num>
 Group Ctl No: <control num> Set Ctl No: <control num>
 This set will NOT be archived

Message Type: Error
Program Module: ediarc

Explanation:

Gentran:Server was unable to open the specified file <EDI file name>. This error prevents Gentran:Server from archiving the specified set.

Procedure:

Use one of these responses if you receive this message

IF...	THEN...
You used a batch file or script to translate data	Follow these steps: a. Correct the file name and directory path b. Delete the temporary Audit File c. Run the translation and archive process again.
You specified an incorrect file name and/or directory path	Follow these steps: a. Verify that the file exists and is correctly named. b. Verify that the file is stored in the directory specified. c. Change the name and/or location of the file and directory if necessary.
The file has the correct name and is in the correct directory	Check the permissions for the file and directory, changing those as necessary.

(Continued on next page)

**180 Failed to open file: <.cnd file name>
No conditional element compliance will be performed**

Message Type: Error
Program Module: Iftran

Explanation:

Gentran:Server was unable open the specified file <.cnd file name>, containing the standard's rules for conditional elements. This prevents Gentran:Server from checking conditional element compliance.

Procedure:

Use this procedure in response to this message:

Step	Action	
1	View the Setup Directories dialog box to determine the name of the directory in which the standards files are stored.	
2	Locate the <i>.cnd</i> file for the standard you are using.	
3	Use this table to determine your next action.	
	IF the <i>.cnd</i> file...	THEN...
	Exists, but is in the wrong directory	Relocate the <i>.cnd</i> file.
	Exists and is in the correct directory	Check the permissions for the directory and change them if necessary. Note Gentran:Server must have read permissions for the file.
	Does not exist	Copy the files for the standard into the directory which your standards files are located. Note You may need to reload the required files from the original installation disk or tape.

(Continued on next page)

180 Failed to open file: msgreco.vda**Message Type:** Error**Program Module:** edifrmnt**Explanation:**

Gentran:Server cannot find or open the specified file. This file is necessary for the VDA standard.

Procedure:

Use this procedure in response to this message:

Step	Action	
1	Determine the existence and current location of the file. If the file no longer exists, you must recreate it.	
2	Determine whether the file is in the correct location.	
3	Use this table to determine your next action.	
	IF the file...	THEN...
	Exists, but the correct directory does not	Create the directory and move the file.
	And the directory both exist, but the file is not in the correct directory	Move the file.
	Has the correct name and is in the correct directory	Check the access permissions for the file and directory and change them as needed.

182 Failed to write: <audit file name>**Disam error message****Tpcode:** <TP Code> **Interchange Ctl No:** <control num>**Group Ctl No:** <control num> **Set Ctl No:** <control num>**Message Type:** Error**Program Module:** ediarc**Explanation:**

Gentran:Server was unable to write the Audit File specified.

(Continued on next page)

Procedure:

Use this procedure in response to this message:

Step	Action	
1	Check the Audit File to see if it contains duplicate data or a duplicate set control number.	
2	Use this table to determine your next action.	
	IF this is...	THEN...
	Duplicate data	Determine whether you want to process the duplicate data. Then, continue or stop the process based on that determination.
	A duplicate set control number	Ask your trading partner to resend the data using a unique set control number.
Not duplicate data and has a unique set control number	<p>1. Check the available free space on the disk containing the directories in which you hold local central audit files.</p> <p>It may be necessary to delete files to make more disk space available.</p> <p>2. Check the permissions of your audit directory and files.</p> <p>It may be necessary to change the existing permissions.</p>	

(Continued on next page)

190 Control Codes do not match in file: <EDI file name>
Tpcode: <TP Code> Interchange Ctl No: <control num>
Group Ctl No: <control num> Set Ctl No: <control num>
This set will NOT be archived
Extracted IC Control #: <control num>
Extracted Group Control #: <control num>
Extracted Set Control #: <control num>
Message Type: Error
Program Module: ediarc

Explanation:

Gentran:Server attempted to locate a specific set but found one with a different group of control numbers. The program could not archive the set referred to in the audit record and wrote a message in the *xlcntl.err* file.

The output file may have been overwritten with new data before it was archived or the archive process may have been unsuccessful.

Procedure:

Use this procedure in response to this message:

Step	Action
1	Remove the temporary Audit files and the output file.
2	Translate the data again and archive it immediately. You should archive immediately after each successful translation.

(Continued on next page)

200 Missing set header: File: <file name> Offset: <number>
 Tpcode: <TP Code> Interchange Ctl No: <control num>
 Group Ctl No: <control num> Set Ctl No: <control num>
 This set will NOT be archived
Message Type: Error
Program Module: ediarc

Explanation:

Gentran:Server found a set in the data that does not have a set header. This EDI data is invalid.

Procedure:

Use this procedure in response to this message:

Step	Action	
1	Locate the set with the missing header using the Trading Partnership Code and control numbers provided.	
2	Use this table to determine your next action.	
	IF you are archiving...	THEN...
	Outbound data	1. Check to see if the set header is mapped and the mapping instructions are correct 2. Translate the new data.
	Inbound data	Ask your trading partner for corrected data, then translate the new data.

(Continued on next page)

**200 Error occurred reading Interchange Org record for <TP Code>
disam error message****Control number not updated at this level****Message Type: Error****Program Module: envelope****Explanation:**

Gentran:Server was unable to read the Interchange Organization record for this Trading Partnership Code and did not update the interchange control number. This error can occur for several reasons:

- ▶ The Organization file does not include an Organization record for the Trading Partnership Code identified in the message.
- ▶ The Organization file does not exist.
- ▶ The Organization file is empty.
- ▶ The Organization file is in use by another user.
- ▶ The Organization file is not located in the correct directory.
- ▶ Gentran:Server does not have read permissions for the directory and file.

Procedure

Use this procedure in response to this message:

Step	Action
1	Determine the reason for the error.
2	Correct, translate, and send the data again.

(Continued on next page)

**200 Error occurred rewriting Interchange Organization record
disam error message****Control number not updated at this level****Message Type: Error****Program Module: envelope****Explanation:**

Gentran:Server was unable to rewrite the Interchange Organization record for this Trading Partnership Code and did not update the interchange control number. This error can occur for several reasons:

- ▶ The Organization file is in use by another user.
- ▶ The Organization file is not located in the correct directory.
- ▶ Gentran:Server does not have read permissions for the directory and file?

Procedure:

Use one of these responses if you receive this message.

IF you are in a...	THEN...
UNIX multi-user environment	Wait, then run the process again.
Single-user environment or are sure that the file is unlocked	<ol style="list-style-type: none">1. Check the amount of disk space available on the disk holding Trading Partnership files.2. Check the permissions of the Organization File and the directory holding Trading Partnership files.

(Continued on next page)

**200 Error updating interchange control number In trading partner record for:
<TP Code>**

disam error message

Message Type: Error

Program Module: envelope

Explanation:

Gentran:Server was unable to update the interchange control number in a record for this Trading Partnership code. This error can occur for several reasons:

- ▶ The Organization file is in use by another user.
- ▶ The Organization file is not located in the correct directory.
- ▶ Gentran:Server does not have read permissions for the directory and file.

Procedure:

Use one of these responses if you receive this message

IF you are in a...	THEN...
UNIX multi-user environment	Wait, then run the process again.
Single-user environment or are sure that the file is unlocked	<ol style="list-style-type: none"> 1. Check the amount of disk space left on the disk holding Trading Partnership files. 2. Check the permissions of the Organization File and the directory holding Trading Partnership files.

**200 File containing data is already an enveloped file <file name>
This data will not be processed**

Message Type: Warning

Program Module: envelope

Explanation:

Gentran:Server will not process previously enveloped data.

Procedure:

No action necessary.

(Continued on next page)

200 Encountered segment too long to process near offset <offset number>. Possibly segment terminator different than interchange header
 Data written to *edifmat.not*
 Output file may contain incomplete interchange
Message Type: Error
Program Module: *edifmat*

Explanation:

The segment is more than 1024 characters in length. Gentran:Server wrote the partial interchange to *edifmat.not* and omitted the partial interchange from the output file.

Procedure:

Use this procedure in response to this message:

Step	Action	
1	Check the <i>edifmat.not</i> file to see if an interchange trailer is missing or if a segment terminator differs from the previous terminator.	
2	Use this table to determine your next action.	
	IF...	THEN ask you trading partner to...
	An interchange trailer is missing	Resend the data, including the missing interchange trailer.
	Different segment terminators were used in a single interchange	Use the same delimiter for all segment terminators within an interchange.

(Continued on next page)

243

Audit record not found.**I_Send:** <number> **I_Recv:** <number>**G_Send:** <number> **G_Recv:** <number>**Interchange Ctl No:** <control num> **Group Ctl No:** <control num>**Set Ctl No:** <control num> **Setid:** <Set ID>**FA status not updated****Message Type:** Warning**Program Module:** ediarc**Explanation:**

Gentran:Server was unable to find the Audit record identified by the message.
Gentran:Server was unable to reconcile this acknowledgment to the original document because the original document was not archived or the archive file was purged.

Procedure:

Use one of these responses if you receive this message

- ▶ Translate both the original document and the functional acknowledgment again. You must archive the original document and reconcile the functional acknowledgment before you purge the archive file.
- ▶ Enter Verbal OK for it in the **FA Reconciliation** dialog box to manually reconcile the functional acknowledgment.

(Continued on next page)

247 **Audit record update failed for trading partner: <TP Code>**
<DISAM error message>
Group Ctl No: <control num> Setid: <Set ID> Set Ctl No: <control num>
Message Type: Error
Program Module: ediarc

Explanation:

Gentran:Server was unable to update the Audit record for the Trading Partnership and set identified in the message. The DISAM error message included in this message indicates the nature of the error.

Procedure:

Use one of these responses if you receive this message.

IF...	THEN...
You are in a UNIX multi-user environment	Wait, then run the process again.
You are in a single-user environment or know that no other user has the file open for reading or writing	Check the amount of disk space left on the disk holding Trading Partnership files.
There is sufficient disk space	Check the permissions for the file and directory.
There is missing data in the set and group level control numbers	Correct the data and run the translation again, then update the audit record.

(Continued on next page)

**285 Unexpected end of file: <segment>
<file name>**

Message Type: Error
Program Module: ediarc

Explanation:

Gentran:Server found that the file ended immediately after or in the middle of the segment identified in the message. The EDI data lacks set, group, and interchange trailers and is invalid.

Procedure:

Use this procedure in response to this message:

Step	Action	
1	View the file using a text editor and determine whether the segment identified had a segment terminator.	
2	Use the Trading Partnership Code to identify the trading partner with whom you are exchanging this data.	
3	Use this table to determine your next action.	
	IF you are translating...	THEN...
	Outbound data	Correct the problem and translate the data again.
	Inbound data	Ask your trading partner to check the EDI file and, if complete, send it again. Your trading partner may need to retranslate the data first.

(Continued on next page)

-
- 300** **Could not find set in indicated file**
Failed to seek to position <file offset> in file <input file name>
The indicated file offset was invalid
- Message Type:** **Warning**
Program Module: **envelope**
- Explanation:**
Gentran:Server was unable find the set at the offset indicated because the file is too small. This error can occur if the file was moved or overwritten after translation.
- Procedure:**
No action possible. You must envelope your sets immediately after translation to avoid this error.
-
- 300** **Error <error number> reading edistat.o during update process**
Archived set will not reflect new envelope
- Message Type:** **Warning**
Program Module: **envelope**
- Explanation:**
Gentran:Server is unable read the *edistat.o* file or update the original file. The records in the *edistat.o* file still point to the original file, preventing Gentran:Server from placing the new envelope into the archive.
- Procedure:**
To find the meaning of the error number referenced in this message, see the [Command Reference](#) chapter in the *Gentran:Server for UNIX and Workstation Technical Reference Guide*.
-
- 300** **Error <error number> returned from encreate.**
Unable to create files env.dat, env.idx
- Message Type:** **Error**
Program Module: **envelope**
- Explanation:**
Gentran:Server is unable to create the envelope files (*env.dat* and *env.idx*).
- Procedure:**
To find the meaning of the error number referenced in this message, see the [Command Reference](#) chapter in the *Gentran:Server for UNIX and Workstation Technical Reference Guide*.
-

(Continued on next page)

300 Error <error number> writing edistat.o during update process**Archived set will not reflect new envelope****Message Type: Warning****Program Module: envelope****Explanation:**

Gentran:Server is unable read the *edistat.o* file or update the original file. The records in the *edistat.o* file still point to the original file, preventing Gentran:Server from placing the new envelope into the archive.

Procedure:

Find the meaning of the error number referenced in this message in the [Command Reference](#) chapter in the *Gentran:Server for UNIX and Workstation Technical Reference Guide*.

300 Error occurred rewriting envelope record**disam error message****Tpid = <TP Code>, Fname = <file name>****Offset in edistat.o will be incorrect****Message Type: Error****Program Module: envelope****Explanation:**

Gentran:Server is unable rewrite the envelope record. The set offset in *edistat.o* is now incorrect and, possibly, the set was not properly archived.

Procedure:

Use one of these responses if you receive this message.

IF you are in a...	THEN...
UNIX multi-user environment	Wait, then run the process again.
Single-user environment or are sure that no other user has the file locked	<ol style="list-style-type: none"> 1. Check the amount of available disk space. 2. Check the permissions of the <i>edistat.o</i> file and directory.

(Continued on next page)

300 Error writing data to env.dat**disam error message****Message Type: Error****Program Module: envelope****Explanation:**Gentran:Server cannot write the *env.dat* file.**Procedure:**

Use one of these responses if you receive this message

IF you are in a...	THEN...
UNIX multi-user environment	Wait, then run the process again.
Single-user environment or are sure that no other user has the file locked	<ol style="list-style-type: none">1. Check the amount of disk space left on the disk containing the output file.2. Check the permissions of the output file and the directory holding it.

(Continued on next page)

300 No data in / or unable to read edistat.o
 errno = <error number>

Message Type: Warning
Program Module: envelope

Explanation:
 Gentran:Server is unable to read any data from the *edistat.o* file.

Procedure:
 Use this procedure in response to this message:

Step	Action	
1	Find the meaning of the error number referenced in this message in the Command Reference chapter in the <i>Gentran:Server for UNIX and Workstation Technical Reference Guide</i> .	
2	Use this table to determine your next step.	
	IF...	THEN...
	There is no data to be enveloped or the file is empty	No further action is possible.
	Gentran:Server is unable to open the file	Verify that the file exists and is in the correct directory.
	Gentran:Server cannot read or write to the file	Check the permissions on the file and the directory containing it.

(Continued on next page)

343 Audit record not found. Edistat.o not created for resend data.**Audit record for original data was not found.****Message Type: Warning****Program Module: edirsnd****Explanation:**

Gentran:Server was unable to find the original Archive record and did not archive the resend data as a result. The original record may have been deleted, moved, or purged before archiving. Alternatively, the file may not exist in the specified directory or Gentran:Server may not have the correct permissions for the file or the directory.

Procedure:

Use one of these responses if you receive this message

- ▶ Translate both the original document and the functional acknowledgment again. You must archive the original document and reconcile the functional acknowledgment before you purge the archive file.
- ▶ Enter Verbal OK for it in the **FA Reconciliation** dialog box to manually reconcile the functional acknowledgment.

(Continued on next page)

346 **Trading partner record not found. <TP Code>
Unable to update control number <control num>**
Message Type: **Warning**
Program Module: **envelope**

Explanation:

Gentran:Server was unable to locate the Trading Partnership record identified in the message and did not update the control number. Either the record does not exist or it is not in the correct directory.

Procedure:

Use this procedure in response to this message:

Step	Action	
1	Use the File Manager to see if the record exists and whether or not it is in the directory you specified for trading partner files.	
2	Use this table to determine your next action.	
	IF the file...	THEN...
	Is in the wrong directory	1. Move it to the correct directory. 2. Manually update the interchange control number in the Trading Partnership Maintenance and/or Organization File(s).
	Does not exist	Recreate the record.

361 **Invalid set count: Data = <number of sets counted>
Actual = <number of sets present>
Invalid set's control number: <control number>**
Message Type: **Error**
Program Module: **edifrmat**

Explanation:

This interchange contains a number of sets unequal to the set count segment. You used the **edifrmat** program with the 'v' parameter, causing the program to write an error message to *xlcntl.err*, write the erroneous group to *edifrmat.not*, and omit the erroneous group from the output file.

Procedure:

Use one of these responses if you receive this message

- ▶ Ask your trading partner to correct the data and resend it.
- ▶ Manually correct the data yourself.

(Continued on next page)

**362 Invalid group count: Data = <number of groups counted>
Actual = <number of groups present>
Invalid group's control number: <control number>
Message Type: Error
Program Module: edifrmat**

Explanation:

This interchange contains a number of groups unequal to the number specified by the interchange trailer. Using the **edifrmat** program with the 'v' parameter, caused the program to write an error message to *xlcntl.err*, write the erroneous interchange to *edifrmat.not*, and omit the erroneous interchange from the output file.

Procedure:

Use one of these responses if you receive this message

IF translation is...	THEN...
Outbound	Correct the application data and retranslate
Inbound	Ask your trading partner to correct the application data, translate the new data, and send the new data to you.

(Continued on next page)

364 Interchange Organization record not found.
Your Interchange ID: <your Interchange ID>
Partner's Interchange ID: <partner's Interchange ID>

Message Type: Error
Program Module: edirsnd

Explanation:

Gentran:Server found a mismatch between the Interchange IDs in the Interchange Organization record and the Interchange IDs used in the resend.
Gentran:Server is unable to resend the corrected data.

Procedure:

Use this procedure in response to this message:

Step	Action
1	Check the Interchange Organization record.
2	Send the data again, using the Interchange IDs found in the Interchange Organization record.

(Continued on next page)

365 **Group Organization Record not found.**
Your Interchange ID: <your Interchange ID>
Partner's Interchange ID: <partner's Interchange ID>
Your Application ID: <your Group ID>
Partner's Application ID: <partner's Group ID>

Message Type: Error
Program Module: edirsnd

Explanation:

Gentran:Server found a mismatch between the Group IDs in the Group Organization record and the Group IDs used in the resend. Gentran:Server is unable to resend the corrected data.

Procedure:

Use this procedure in response to this message:

Step	Action
1	Check the Group Organization record.
2	Resend the data, using the Group IDs found in the Group Organization record.

370 **Organization record locked:**
<Organization record data>

Message Type: Error
Program Module: lftran

Explanation:

One or more of the documents in the input file references an organization record that is locked. The message identifies the locked record by displaying your Interchange ID, your partner's Interchange ID, your application ID, and your partner's application ID in place of the variable <Organization record data>.

Procedure:

To correct this error, wait until the record is unlocked and run the translation again.

Note

Gentran:Server writes inbound data requiring the locked record to *boxin.lock* and the outbound data to *boxout.lock*.

(Continued on next page)

370 **Trading Partnership locked:**
<Trading Partnership data>

Message Type: **Error**
Program Module: **Iftran**

Explanation:

One or more of the documents in the input file references a Trading Partnership record that is locked.

Note

Gentran:Server uses your Interchange ID, your partner's Interchange ID, your Group ID, your partner's Group ID, the standard version and release, and the Message ID to identify a Trading Partnership record in inbound data.

Gentran:Server uses the Trading Partnership Code to identify the Trading Partnership record in outbound data.

Procedure:

To correct this error, wait until the record is unlocked and run the translation again.

Note

Gentran:Server writes inbound data requiring the locked record to *boxin.lok* and the outbound data to *boxout.lok*.

(Continued on next page)

370 Trading partnership not defined for:
<Trading Partnership data>

Message Type: Error
Program Module: Iftran

Explanation:

One or more of the documents in the input file does not reference a Trading Partnership record. Gentran:Server is unable to continue the translation.

Note

Gentran:Server uses key fields (your Interchange ID, your partner's Interchange ID, your Group ID, your partner's Group ID, the standard version and release, and the Message ID) to identify a Trading Partnership record in inbound data.

Gentran:Server uses the Trading Partnership Code to identify the Trading Partnership record in outbound data.

Procedure:

Use one of these responses if you receive this message.

IF translation is...	THEN...
Inbound	<p>Verify that the Trading Partnership Record you have set up contains the same six key fields as specified in the error message.</p> <p>If not, change the data in the six key fields of the Trading Partnership record or ask your trading partner to correct and resend data.</p>
Outbound	<p>Revise the application data and/or the map so that the correct Trading Partnership Code appears in the first record of the file. Translate and send the data again.</p>

(Continued on next page)

377 Interchange contains count errors
Interchange written to edifmat.not

Message Type: Error
Program Module: edifmat

Explanation:

The input file contains a number of sets unequal to the set count segment, or it contains a number of groups unequal to the number specified by the interchange trailer. See error message [361](#) or error message [362](#) for more information.

Procedure:

Use this procedure in response to this message:

Step	Action
1	Check the input file for erroneous group or set counts.
2	Ask your trading partner to correct the data and resend it.
3	Run edifmat again when you receive the corrected data.

377 Interchange contains segment with id too long
Segment Number: <segment number>
Interchange written to edifmat.not

Message Type: Error
Program Module: edifmat

Explanation:

The input file includes a segment ID that is greater than three characters in length. The **edifmat** program expects all segment IDs to be either two or three characters long.

Procedure:

Use this procedure in response to this message:

Step	Action
1	Check the input file for a segment ID that is not within the allowed character length.

(Contd) Step	Action
2	Ask your trading partner to correct the length of all segment IDs that are less than two or greater than three characters in length and resend the data.
3	Run edifmat again when you receive the corrected data.

378 Interchange contains invalid characters
Interchange written to *edifmat.not*

Message Type: Error
Program Module: *edifmat*

Explanation:

The input file contains characters that are not valid for the standard being used.

Procedure:

Use this procedure in response to this message:

Step	Action
1	Check the input file for invalid characters for the standard.
2	Contact your trading partner and ask them to correct the data and resend it.
3	Run <i>edifmat</i> again when you receive the corrected data.

379 Interchange has no trailer!!!
Interchange written to *edifmat.not*

Message Type: Error
Program Module: *edifmat*

Explanation:

The interchange trailer is missing. The *edifmat* program was unable to process the interchange. The program wrote the partial interchange to *edifmat.not* and omitted the partial interchange from the output file.

Procedure:

Use this procedure in response to this message:

Step	Action
1	Check the <i>edifmat.not</i> file to determine how much data is missing.
2	Contact your trading partner and ask them to send the corrected data.

(Continued on next page)

380 Failed to open file: <file name>

Message Type: Warning
Program Module: ediarc

Explanation:

Gentran:Server cannot open the identified file (<file name>). The file may be locked by another user; Gentran:Server may not have write permissions for the file and/or directory; or the disk containing the directory may be full.

Procedure:

Use one of these responses if you receive this message:

IF you are in a...	THEN...
UNIX multi-user environment	Wait, then run the process again.
Single-user environment or are sure that no other user has the file locked	<ol style="list-style-type: none"> 1. Open your Setup Directories dialog box and identify the directories that hold the local and central audit files. 2. Check those directories to see if the identified file exists. <ul style="list-style-type: none"> ▶ If the file exists, check the read permissions on the file and directory ▶ If the file does <i>not</i> exist, translate your data again.

(Continued on next page)

380 Failed to open file: <file name>**Message Type:** Error**Program Module:** edifrmat**Explanation:**

The **edifrmat** program was unable to open the file. The file may be locked by another user; Gentran:Server may not have write permissions for the file and/or directory; or the disk containing the directory may be full.

Procedure:

Use this procedure in response to this message:

Step	Action	
1	Check the directory path and name of the file you specified.	
2	Use this table to determine your next action.	
	IF...	THEN...
	You specified the correct file name and directory path	1. Use File Manager to determine whether the file exists and is in the specified directory. 2. Rename or move the file as needed.
The file has the correct name and is in the correct directory	Check the permissions and change them if necessary.	

(Continued on next page)

**380 Failed to open translate table file: <file name>
TP Code: <TP Code>**

Message Type: Error
Program Module: Iftran

Explanation:

Gentran:Server was unable to open the map table for a map referenced by one or more of the sets in the input file. The file may be locked by another user; Gentran:Server may not have write permissions for the file and/or directory; or the disk containing the directory may be full.

Procedure:

Use this procedure in response to this message:

Step	Action	
1	Identify the name of the directory in which you store your Map files using the Setup Directories dialog box found under Settings on the Gentran:Server window.	
2	Use File Manager to determine whether the directory exists and whether the file (<mapname>.TPL/TBL) is in the correct directory.	
3	Use this table to determine your next step.	
	IF the...	THEN...
	Map directory does <i>not</i> exist	Create the map directory and move the file into it.
	Table file does <i>not</i> exist	Compile the Map file (.map) again to create a new Map table (.TPL/.tbl).
	File exists and is in the correct directory	Check the read permissions on the file and directory. Change them as necessary.

(Continued on next page)

380 Unable to open TP File**Message Type:** Error**Program Module:** lftran**Explanation:**

Gentran:Server was unable to open the Trading Partnership File. This may be because there is no Trading Partnership File at all, because the Trading Partnership File is not in the directory specified for Trading Partnership files, or because Gentran:Server does not have the correct permissions for the file or the directory.

Procedure:

Use this procedure in response to this message:

Step	Action	
1	Identify the name of the directory in which you store your Map files using the Setup Directories dialog box found under Settings on the Gentran:Server window.	
2	Use this table to determine your next action.	
	IF the...	THEN...
	Directory is correct	Use File Manager to check the directory for the Trading Partnership file (<i>tp.dat/tp.idx</i>).
File exists	1. Check the permissions of both the file and the directory. 2. Change the permissions, if necessary.	

(Continued on next page)

382 Failed to write: <archive file name>**Message Type:** Warning**Program Module:** ediarc**Explanation:**

Gentran:Server did not write the Archive file. The file may be locked by another user; Gentran:Server may not have write permissions for the file and/or directory; or the disk containing the directory may be full.

Procedure:

Use one of these responses if you receive this message

IF you are in a...	THEN...
UNIX multi-user environment	Wait, then run the process again.
Single-user environment or are sure that no other user has the file locked	Check the amount of available disk space on the disk holding temporary files. Free more as needed
You are sure the file is not locked and there is sufficient disk space	Check the permissions of the Archive file and the directory holding temporary files. Change permissions as needed.

382 Failed to write: <file name>**Message Type:** Warning**Program Module:** edifrmnt**Explanation:**

Gentran:Server did not write the specified file. The file may be locked by another user; Gentran:Server may not have write permissions for the file and/or directory; or the disk containing the directory may be full.

Procedure:

Use one of these responses if you receive this message

IF you are in a...	THEN...
UNIX multi-user environment	Wait, then run the process again. (Continued on next page)

(Contd) IF you are in a...	THEN...
Single-user environment or are sure that no other user has the file locked	Check the amount of available disk space on the disk holding temporary files. Free more as needed
You are sure the file is not locked and there is sufficient disk space	Check the permissions of the Archive file and the directory holding temporary files. Change permissions as needed.

(Continued on next page)

**387 Invalid segment id encountered: <segment ID>
Segment Number: <segment number>
Interchange written to edifrmat.not**

Message Type: Error
Program Module: edifrmat

Explanation:

The input file includes a segment ID that is less than two or greater than three characters in length. The **edifrmat** program expects all segment IDs to be either two or three characters long.

Procedure:

Use this procedure in response to this message:

Step	Action
1	Check the input file for a segment ID that is not within the allowed character length.
2	Ask your trading partner to correct the length of all segment IDs that are less than two or greater than three characters in length and resend the data.
3	Run edifrmat again when you receive the corrected data.

**387 Error <operating system error number> updating Interchange Organization record
DISAM error number: <DISAM error number>**

Message Type: Error
Program Module: Iftran

Explanation

One or more of the documents in the file references a Trading Partnership record associated with a locked Interchange Organization record. Control Numbers Globally Maintained is selected.

Procedure:

To correct this error, wait until the record is unlocked and run the translation again.

Note

Gentran:Server writes inbound data requiring the locked record to *boxin.lock* and the outbound data to *boxout.lock*.

(Continued on next page)

388 Error <operating system error number> updating Group Organization record
DISAM error number: <DISAM error number>

Message Type: Error

Program Module: lftran

Explanation:

One or more of the documents in the file references a Trading Partnership record associated with a locked Group Organization record. Control Numbers Globally Maintained is selected.

Procedure:

To correct this error, wait until the record is unlocked and run the translation again.

Note

Gentran:Server writes inbound data requiring the locked record to *boxin.lock* and the outbound data to *boxout.lock*.

500 Unexpected version of audit file, running wrong lftran. Exiting without archiving.

Message Type: Error

Program Module: ediarc

Explanation:

The version 5.4 **ediarc** command is unable to archive an audit file created by a prior version of Gentran:Server or Gentran:Mentor. **ediarc** exits without affecting the audit files.

Procedure:

Run the translator again using version 5.4 of Gentran:Server.

Messages in Alphabetical Order (Starting with Variables)

Overview This section lists messages that begin with variables. The messages are listed in alphabetical order by variable description. Descriptions of variables are surrounded by < >.

References

- To find a message that begins with a number, see the topic [Messages in Numerical Order](#) in this chapter.
- If you want to find a message that begins with an alphabetic character (neither a number, nor a variable), see the topic [Messages in Alphabetical Order \(Not Starting with Variables\)](#) in this chapter.

<application file name>

<application file name> has changed. Save before <opening/creating> new application?

Message Type: Warning
Program Module: Application Editor

Explanation:

You have not saved recent changes to the open application file. This prompt affords you the opportunity to save those changes before opening another application file. If you choose not to save these changes, you will lose them as when the program opens the new application. If the open application file is new, the message displays the word "Application" in place of the variable (<application file name>).

Procedure:

Use this procedure in response to this message:

IF you want to...	THEN Select...
Save the changes to this file	Yes.
Lose the changes made since you last saved	No.

(Continued on next page)

<argument> <argument> is not a valid argument for the operation <operation>.

Message Type: Error
Program Module: Compiler

Explanation:
The compiler is unable to accept the argument entered for this operation.

Procedure:
Change the mapping instruction so that it contains a valid arguments.

Reference
See the *Gentran:Server for UNIX and Workstation Mapping and Translation Guide* for information about appropriate arguments for the identified operation (<operation>).

<expression> <expression> is not a valid GROUP ID

Message Type: Error
Program Module: Visual Mapper

Explanation:
The selected text that is not the name of any GROUP. You must specify a mapping GROUP ID to complete the action you are performing.

Procedure:
Select the name of the desired mapping GROUP and then click OK

<expression> <expression> is not a valid operator. Compiler will ignore it.

Message Type: Warning
Program Module: Compiler

Explanation:
This mapping instruction contains an invalid expression. The compiler excludes this expression from the compiled version of the map. This may cause unexpected results.

Procedure:
Rewrite the mapping instruction so that it contains all required arguments and data items.

Reference
See the chapter [Mapping](#) in the *Mapping and Translation Guide* for information about the arguments and data items that are required for this operation.

(Continued on next page)

<expression> **<expression> is not a valid symbol in a <condition/mapping/macro> part of a mapping instruction.**

Message Type: Error
Program Module: Compiler

Explanation:
The mapping instruction contains an invalid symbol (<expression>).

Procedure:
Rewrite the mapping instruction using only valid symbols/characters/numbers.

Reference
See Mapping Rules in the online help or see the chapter [Mapping](#) in the *Gentran:Server for UNIX and Workstation Mapping and Translation Guide* for information about the symbols for mapping instructions.

<expression> **<expression> is not a valid symbol in this context.**

Message Type: Error
Program Module: Compiler

Explanation:
The mapping instruction contains an invalid symbol (<expression>).

Procedure:
Rewrite the mapping instruction using only valid symbols/characters/numbers.

Reference
See Mapping Rules in the on-line help or see the chapter [Mapping](#) in the *Gentran:Server for UNIX and Workstation Mapping and Translation Guide* for information about the symbols that are invalid for mapping instructions.

(Continued on next page)

<expression> **<expression> is not recognized as a valid source or destination element.**

Message Type: **Warning**
Program Module: **Compiler**

Explanation:

A specified source or destination item is not part of this mapping GROUP.

Procedure:

Use this procedure in response to this message:

Step	Action
1	Change this mapping instruction so that it uses as a source only items in the Source box at the top of this window and uses as a destination only items in the Destination box.
2	Enter the labels, not the names, of the items.
3	Close the Mapping Instructions window and add the item to this GROUP.

<file name> **<file name> is corrupted**

Message Type: **Error**
Program Module: **Main Window (Settings)**

Explanation:

The file containing your default data type preferences is corrupt. This error can occur when there is a hardware or software failure while the file is open.

Procedure:

Use this procedure in response to this message:

Step	Action
1	Click User Setup from the Settings menu of the Gentran:Server window.
2	Set preferences to the default data type values and click OK .

(Continued on next page)

<file name> **<file name> is locked and cannot be updated; file saved as <file name>**

Message Type: Error

Program Module: Installation (Windows only)

Explanation:

The identified DLL file is locked by another process.

Procedure:

Close all other programs to ensure that the DLL file is unlocked.

<file name> **<file name> is read only and cannot be overwritten**

Message Type: Error

Program Module: Installation

Explanation:

The file protection on the identified file is set to read-only.

Procedure:

Use the **attrib** command to remove read-only file protection for this file.

Example

`attrib -r <file name>`

(Continued on next page)

**<implementation
guide name>**

<implementation guide name> has changed. Save before <creating/opening> new standard IG?

Message Type: Warning
Program Module: Standard/IG Editor

Explanation:

You have not saved recent changes to the open implementation guide. This prompt affords you the opportunity to save those changes before opening another implementation guide. If you choose not to save these changes, you will lose them as when the program opens the new implementation guide. If the open implementation guide is new, the message displays the words "implementation guide" in place of the variable (<implementation guide name>).

Procedure:

Use one of these responses if you receive this message

IF you want to...	THEN Select...
Save the changes to this file	Yes.
Lose the changes made since you last saved	No.

<label>

<label> is not a valid LABEL

Message Type: Error
Program Module: Visual Mapper

Explanation:

The label entered does not exist in this map.

Procedure:

Type the *label* of an existing item in the **Add Item to GROUP** dialog box.

<source item>

<source item> is not a valid destination for this group.

Message Type: Error
Program Module: Compiler

Explanation:

The mapping instruction contains a string that is not a label of any of the destination items in this GROUP.

Procedure:

Enter the *label* of one of the destination items after the 'TO' in this mapping expression.

(Continued on next page)

<string> **<string> is not a valid document in the current set**

Message Type: Error

Program Module: Standard/IG Editor and Visual Mapper

Explanation:

The specified standard does not contain the document named in the Document Display/Text text box.

Procedure:

Enter the name of a document that the specified standard contains.

<string> **<string> is not a valid GROUP item**

Message Type: Error

Program Module: Visual Mapper

Explanation:

The selected text string is not a GROUP item and cannot be deleted.

Procedure:

Use this procedure in response to this message:

Step	Action
1	In the Mapping Mini-report, highlight the field/element you want to delete from the GROUP Note If the item is in two or more GROUPs, make sure the item name is under the desired GROUP name. Fields are identified by their LABEL and field name. Elements are identified by their LABEL and element ID.
2	Select Delete Item from GROUP from the Map Items menu.

Messages in Alphabetical Order (Not Starting with Variables)

Overview This section lists messages in alphabetical order.

References

- If you want to find a message that begins with a number, see the topic [Messages in Numerical Order](#) in this chapter.
- If you want to find a message that begins with a variable (the first word is surrounded by < >), see the topic [Messages in Alphabetical Order \(Starting with Variables\)](#) in this chapter.

0-to-1 **0-to-1 GROUP must contain one and only one destination item**

Message Type: Error
Program Module: Visual Mapper

Explanation:

There are more than one destination items selected. To create a 0-1 GROUP, select one and only one destination field, element, or sub-element.

Procedure:

Use this procedure in response to this message:

Step	Action
1	Click once on the destination side to make it active.
2	Click Clear All Marks on the Mark menu.
3	Mark the destination field, element, or subelement you want to make a 0-to-1 GROUP.
4	Click Create 0-to-1 Single GROUP on the Map Items menu.

(Continued on next page)

-
- A A block of data that begins with a field must end with a field from the same record.**

Message Type: Error

Program Module: Application and Standard/IG Editors

Explanation:

Fields/elements from two or more records are marked, but this edit operation works only on a block of data from a single record/segment, composite element, field/element, or string of contiguous fields/elements.

Procedure:

Use this procedure in response to this message:

Step	Action
1	Select Clear All Marks from the Mark menu to unmark all items.
2	Mark one block of data.
3	Select the desired edit operation.

-
- A A field cannot start a loop. Only records can start a loop**

Message Type: Error

Program Module: Application and Standard/IG Editors

Explanation:

A loop can start only with an entire record or segment. Currently, you have only a field/element marked – not the entire record/segment.

Procedure:

Use this procedure in response to this message:

Step	Action
1	Click Clear All Marks on the Mark menu to unmark all items.
2	Click Collapse All on the View menu to view only the records/segments. Move the focus to the first item you want to mark and press F5. Repeat this for each item you want to include in the loop.
3	Click Make Loop on the Edit menu (CTRL+L).

(Continued on next page)

-
- A** These three messages are similar in content, explanation, and procedure.
- A valid destination must be selected**
A valid source and destination must be selected
A valid source must be selected
Message Type: Error
Program Module: Visual Mapper
- Explanation:**
This map does not a valid source and/or destination. Every map must have a valid source and a valid destination.
- Procedure:**
Select a source and/or destination type and file for this map.
-
- All** **All items discarded nothing to view.**
or
All items have been discarded, switching to view all mode.
Message Type: Warning
Program Module: Standard/IG Editor
- Explanation:**
All used items were discarded from this implementation guide, leaving nothing for the Standard/IG Editor to display.
- If all used items were discarded while in View Only Used mode, the editor automatically reverts to **View All Items** mode
- Procedure:**
Mark one or more of the items in the implementation guide as used before attempting to view them.
-
- An** **An operator was expected, instead a data item <expression> was found.**
Message Type: Error
Program Module: Compiler
- Explanation:**
The mapping instruction contains the specific data item instead of the required operator. This error stops the compiler.
- Procedure:**
Correct the mapping instruction by replacing the identified data item with a valid operator or by adding the omitted operator. Then, run the compiler again.
-

(Continued on next page)

An An unimplemented error occurred in <error location>. Please report this to product support.

Message Type: Error
Program Module: Compiler

Explanation:

The compiler encountered an unidentified error and is unable to compile this map.

Procedure:

Call Gentran:Server Customer Support and give them the exact wording of the message and the version of Gentran:Server you are using.

Are There are two deletion prompts to which you must respond.

Module	Message
Compiler	Are you sure you want to delete the selected list(s).

Explanation:

These messages prompt you to confirm a deletion request to avoid unintended actions.

Procedure:

Use this procedure to respond to these prompts.

Step	Action	
1	Look carefully at the names of the list(s) selected.	
2	Use this table to determine your next action.	
	IF you...	THEN Select...
	Want to delete the selected item	Yes.
Do not want to delete the selected item	No.	

(Continued on next page)

Attempt Attempt to paste a composite element into another composite element not allowed.

Message Type: Error

Program Module: Standard/IG Editor

Explanation:

You cannot paste a composite element from the Clipboard into a subelement (component) of another composite element.

Procedure:

Use this procedure in response to this message:

Step	Action	
1	Use the table below to determine your first action	
	IF you want to paste the Clipboard item...	THEN...
	<i>Above</i> the composite element containing the selected component	Select the next element upward that is not a component of a composite element.
	<i>Below</i> the composite element containing the selected component	Select the next element downward that is not a component of a composite element.
2	Select Paste from the Edit menu (SHIFT+INSERT).	

(Continued on next page)

Batch Batch filenames are missing for <number> task(s). Server's timer will skip over such tasks! Do you wish to commit the schedule?

Message Type: Warning
Program Module: Main Window (Tools)

Explanation:

Gentran:Server found a number of tasks without batch files specified. You must specify a batch file and directory path for each task in the Task Scheduler. There is a separate line for each task.

Procedure:

Use one of these responses if you receive this message.

IF you want to perform...	THEN...
Only those tasks for which you have specified batch files	Click Yes .
All tasks in the schedule	1. Click No 2. Correct the schedule using the steps below. a. Click Tools on the Main menu. b. Click Task Scheduler from the Tools menu. c. Enter batch file names and directory paths for every task in the Task Scheduler dialog box.

(Continued on next page)

Cannot **Cannot open file <file name> for <file operation>. <additional information>**

Message Type: Error

Program Module: Visual Mapper (AutoMapper)

Explanation:

The Visual Mapper is unable open the specified file (<file name>) or perform the requested operation. The message may include additional information explaining the error.

Procedure:

Use this procedure in response to this message:

Step	Action
1	Use the File Manager to locate the file and verify its existence.
2	Determine the directory in which the file should reside. Then, choose one of the responses below. <ul style="list-style-type: none"><li data-bbox="630 940 1408 999">▶ If the file exists but is located in a different directory, move it to the appropriate directory.<li data-bbox="630 1016 1408 1104">▶ If the file exists and is in the correct directory, check the permissions for the file and directory and make the necessary changes.

(Continued on next page)

Cannot **Cannot open file; name not specified****Message Type:** Error**Program Module:** Synonym and Thesaurus Editors**Explanation:**

The editor cannot open the related ISAM file (.idx or .dat). No file with the appropriate name is available.

Procedure:

Use this procedure in response to this message:

Step	Action	
1	View the Setup Directories dialog box to determine the directory that should contain maps and related files.	
2	Use this table to determine your next action.	
3	IF...	THEN...
	You are in the Thesaurus Editor	The file name must be <i>thesaur.idx</i> or <i>thesaur.dat</i> .
	You are in the generic Synonym Editor	The file name must be <i>generic.idx</i> or <i>generic.dat</i> .
	You are in the specific Synonym Editor	The file name must be <i><map_name>.idx</i> or <i><map_name>.dat</i> .
	The file exists, but is in the wrong directory	You must move it to the correct directory.
	The file exists and is in the correct directory	Check the permissions for the directory and change them if necessary.

(Continued on next page)

Cannot Cannot quit application during Auto Mapping. Use the cancel button on the percent bar to cancel Auto Mapping.

Message Type: Error

Program Module: Visual Mapper (AutoMapper)

Explanation:

You are unable to close the Visual Mapper while AutoMapping is in progress. You must first stop the AutoMapper and then close the Visual Mapper.

Procedure:

Use this procedure in response to this message:

Step	Action
1	Click on Cancel below the percent bar in the AutoMapping Status window.
2	Close the Visual Mapper.

(Continued on next page)

Can't There are two messages related to saving items or files.
Can't open file <file name> to retrieve mapping instructions.
 or
Can't open file <file name> to save mapping instructions.

Message Type: Error
Program Module: Compiler

Explanation:

Gentran:Server is unable to open the identified file and retrieve or save mapping instructions.

Procedure:

Use this procedure in response to this message:

Step	Action	
1	Use the File Manager to locate the file and verify its existence.	
2	Determine the directory in which you should store the file.	
3	Use this table to determine your next action.	
	IF the file...	THEN...
	Exists, but the correct directory does not	Create the directory and move the file into that directory.
	And the directory both exist, but the file is not in the correct directory	Move the file.
	Has the correct name and is in the correct directory	Check the permissions and change them, if necessary.

(Continued on next page)

Character

There are two character string errors you may encounter while compiling.

Message Type: Error

Program Module: Compiler

Error	Explanation
Character <string> is not valid in this context.	Gentran:Server is unable to accept the identified character string. Certain operations or types of data are meaningful only at given points in mapping instructions.
Character(s) <list of characters> cannot be used in the mapping expression <mapping instruction> (see documentation).	The identified character(s) are used incorrectly in this mapping instruction.

Procedure:

To correct these errors, change the mapping instruction to use only appropriate characters or data.

Reference

See the [Mapping](#) chapter in the *Gentran:Server for UNIX and Workstation Mapping and Translation Guide* for more information about mapping instructions.

Compilation

*** COMPILATION COMPLETE ***

Message Type: Informational

Program Module: Compiler

Explanation:

Gentran:Server displays this message at the end of the Compiler Error Log to indicate that compilation was complete and successful. If you do not see this message, the compilation was unsuccessful.

Procedure:

No further action is necessary.

(Continued on next page)

Compilation ***** COMPILATION COMPLETE, compiled map was written to: <file name>.**
Message Type: Informational
Program Module: Compiler

Explanation:
The compiler has finished compiling the map and has written the Map Table (.tbl) to the file identified in the message.

Procedure:
No further action is necessary.

Could **Could not bind to a valid printing device**

Message Type: Error
Program Module: Application and Standard/IG Editors and Visual Mapper

Explanation:
Gentran:Server was unable fulfill the print request. The printer specified in Print Setup is unavailable.

Procedure:
Use this procedure in response to this message:

Step	Action
1	Select Print Setup from the File menu and select a new default printer that your machine can access directly or over a network that you are logged onto.
2	Select Print from the File menu (CTRL+P).

(Continued on next page)

Could **Could not find a parent GROUP ID**

Message Type: **Error**
Program Module: **Visual Mapper**

Explanation:

Gentran:Server requires that you select the name of a mapping GROUP before entering an item label. This rule applies even if the Mapping Mini-report contains only one GROUP.

Procedure:

Use this procedure in response to this message:

Step	Action
1	Select the name of the mapping GROUP (in the Mapping Mini-report) to which you want to apply the command.
2	Select the command from the Map Items menu and enter a valid item label into the text box of the dialog box displayed.

Could **Could not find existing LABEL**

Message Type: **Error**
Program Module: **Visual Mapper (Fast Entry Mode)**

Explanation:

The label entered may not exist on this side of the map. Gentran:Server displays this message when both sides of the map are in fast entry mode, even when the label exists.

Procedure:

Use this procedure in response to this message:

Step	Action
1	Set one side of the map to tree mode and one side in fast entry mode.
2	Move the focus on the side in tree mode onto a field/element/sub-element
3	Enter the name or label of a field/element/subelement into the text box on the dialog box displayed.

(Continued on next page)

Could **Could not find existing record field pair****Message Type:** Error**Program Module:** Visual Mapper (Fast Entry Mode)**Explanation:**

The record/segment and field/element combination entered does not exist on the side of the map in Fast Entry mode or was mapped previously.

Procedure:

Enter a combination that exists on the side of the map in Fast Entry mode and that was not mapped previously.

Could **Could not find text file <file name> to display.****Message Type:** Error**Program Module:** Application and Standard/IG Editors and Visual Mapper**Explanation:**

Gentran:Server is unable to find the file containing the To Do List.

Procedure:

To correct the error, use the File Manager to determine whether the file exists and its location.

- ▶ If it does exist, but is in the wrong directory, you must move it to the correct directory and run the process again.
 - ▶ If the file does *not* exist, call Gentran:Server Customer Support. You must provide Customer Support with the complete text of this message and the version of Gentran:Server you are running.
-

(Continued on next page)

Could Gentran:Server displays a message whenever it is unable to find a file.

Message Type: Error

Program Module: Navigator/Visual Mapper

Error	Explanation
Could not load application data	The Navigator is unable to load the file containing application data. The directory in which application files are stored is identified on the Setup Directories dialog box.
Could not load destination data	The Visual Mapper is unable to load the file containing destination data.
Could not load mapping instructions	The Visual Mapper is unable to load the file containing the specified map.
Could not load source data	The Visual Mapper is unable to load the file containing source data.
Could not open file <file name>	Gentran:Server is unable to open the identified file.

Procedure:

Use this procedure in response to this message:

Step	Action	
1	Use File Manager to determine whether the file: <ul style="list-style-type: none"> ▶ and directory exist ▶ is in the specified directory ▶ is empty. 	
2	Use this table to determine your next action.	
	IF the...	THEN...
	Directory does <i>not</i> exist	Create it.
	Directory exists but the file does not	Create the file and move it to the correct directory.
	File exists and is in the proper directory	Check the read permissions on the file and directory. Change them if needed.

(Continued on next page)

Could **Could not open file.**
Message Type: **Error**
Program Module: **Application Editor**

Explanation:

Gentran:Server is unable to open a new file through the Application Editor. The permissions for the directory containing application files are not correct.

Procedure:

Use this procedure to correct the error.

Step	Action
1	View the Setup Directories dialog box to determine the directory in which you are storing application files.
2	Change the permissions of the application files directory to allow Gentran:Server read and write permissions.

Could **Could not open 'xlcntl.err'**
Message Type: **Error**
Program Module: **Various**

Explanation:

Gentran:Server was unable to find, open, or create the file *xlcntl.err*.

Procedure:

Use one of these responses if you receive this message

IF you are in a...	THEN...
UNIX multi-user environment	Wait, then run the process again.
Single-user environment or know that no other user has the file locked	<ol style="list-style-type: none"> 1. View the Setup Directories dialog box to identify the directory containing temporary files. 2. Use File Manager to determine whether the directory exists and whether it contains the file. <p>If the file does not exist, check write permissions on the directory. If the file exists, check the read permissions on the file and directory.</p>

(Continued on next page)

Could **Could not save file <file name>****Message Type:** Error**Program Module:** Application and Standard/IG Editors and Visual Mapper**Explanation:**

Gentran:Server was unable to save the indicated file.

Procedure:

Use this procedure in response to this message:

Step	Action
1	Determine the amount of disk space available on the disk to which Gentran:Server was trying to write the file. Provide additional space if necessary.
2	Check the permissions of the file and the directory. Change the permissions if necessary.

Current **Current field is not a Record ID****Message Type:** Error**Program Module:** Application Editor**Explanation:**The **Unmark Record ID** option is available only when the focus is on a field marked as the Record ID.**Procedure:**

Use this procedure in response to this message:

Step	Action
1	Move the focus to a field that is marked as a Record ID.
2	Click Unmark Record ID on the Mark menu.

(Continued on next page)

Current **Current item must be a Field in order to make it a Record ID Field**
Current item must be a Field in order to remove a Record ID Field
Message Type: **Error**
Program Module: **Application Editor**

Explanation:

The Mark/Unmark Record ID options are available only when a field is selected. Currently, the focus covers an entire record.

Procedure:

Use this procedure in response to this message:

Step	Action
1	Move the focus to a field in a record that has no Record ID field.
2	Click Mark/Unmark Record ID on the Mark menu.

Current **Current field is not a TP Code**
Current item must be a field in the first record in order to make it a TP Code field
Message Type: **Error**
Program Module: **Application Editor**

Explanation:

The **Mark TP Code** option is active only for marking a field in the first record as the TP Code. This option is unavailable when a TP Code is marked.

The **Unmark TP Code** option is available only when the focus is on a field marked as the TP Code.

Procedure:

Use one of these responses if you receive this message

IF you want to...	THEN...
Mark a field the TP Code	1.Move the focus to a field in the first record. 2.Click Mark TP Code on the Mark menu.
Remove the mark (unmark) from a TP Code field	1.Move the focus to the field 2.Click Unmark TP Code on the Mark menu.

Note

In certain situations, the TP Code field may not exist.

(Continued on next page)

Delete **Delete File: <file name>
Are You Sure?**

Message Type: Prompt
Program Module: Main Window

Explanation:

Gentran:Server prompts you to confirm this deletion request. You will be unable to access or restore the file once you confirm the deletion.

Procedure:

Use one of these responses if you receive this message

IF you...	THEN Click...
Are certain you want to permanently delete this file	Yes.
Are uncertain that you want to permanently delete this file	No.

Deleting **Deleting record <label> would result in a single record loop ending multiple loop levels. This is not allowed. To delete <label>, delete or restructure the loop.**

Message Type: Error
Program Module: Application and Standard/IG Editors

Explanation:

Gentran:Server does not allow you to delete a record if, in doing so, you will create a single record loop within a nested loop.

Procedure:

Use one of these responses if you receive this message.

IF you want to...	THEN...
Retain the current loop structure	No action is necessary.
Cut or delete what is currently the last record in the loop	You must first change the loop structure to eliminate the nested loop or ends on a different record. Example If you remove the nested loop, you can then cut or delete the last record of the outer loop.

(Continued on next page)

Do Do you want to save changes to <string>?**Message Type:** Prompt**Program Module:** Synonym and Thesaurus Editors**Explanation:**

Gentran:Server is prompting you to save recent changes made to the displayed list before closing the editor or opening a new list.

Procedure:

Use one of these responses if you receive this message.

IF you...	THEN Select...
Want to save the changes	Yes.
Do not want to save changes	No.

Element

Element <element> is in at least one group. Are you sure you want to proceed. (Program Module: Application and Standard/IG Editors)

Element <element> is used in at least one mapping instruction. Are you sure you want to proceed. (Program Module: Compiler)

Message Type: Warning**Explanation:**

Gentran:Server is prompting you to verify a deletion request. The element or field you selected for deletion is currently mapped. Deleting it will create an incomplete mapping instruction. The map compiler is unable to process incomplete mapping instructions.

Procedure:

Use one of these responses if you receive this message:

Step	Action
1	Click No and return to the map. This is the recommended action.
2	Delete related mapping instructions and GROUPS prior to deleting the item. Important If you click Yes , you must immediately return to the map and delete or correct the incomplete mapping instructions. You must then recompile the map before using it.

(Continued on next page)

Enter Enter a valid name.

Message Type: Error

Program Module: Synonym and Thesaurus Editors

Explanation:

A valid name was not entered for the new synonym or thesaurus list you are creating or saving. You must enter a unique name for the list. The name can contain a maximum of nineteen alphanumeric characters. List names are case-sensitive.

If you enter a name that is currently in use, the system prompts you to overwrite the file or change the name under which you are saving the list.

Note

The name 'New List' is reserved and is not available for use.

Procedure:

Enter a valid name in the **Synonym/Thesaurus List -- Save As** dialog box.

envelope envelope: Error opening process log file xlcntl.err

Message Type: Error

Program Module: envelope

Explanation:

Gentran:Server could not find, open, or create the file *xlcntl.err*. The file may be stored in a directory for which **envelope** does not have read permission.

Procedure:

Use this procedure in response to this message:

Step	Action	
1	View the Setup Directories dialog box to identify the directory that contains your temporary files.	
2	Use File Manager to determine whether the directory exists and whether it contains the file.	
3	Use this table to determine your next action.	
	IF the file...	THEN check the...
	Does <i>not</i> exist	Write permissions on the directory.
	Does exist	Read permissions on the file and directory.

(Continued on next page)

envelope **envelope: Error reading 'envprim.cfg'**

Message Type: **Error**
Program Module: **envelope**

Explanation:
 Gentran:Server cannot read the *envprim.cfg* file.

Procedure:
 Use one of these responses if you receive this message

IF...	THEN...
envelope was executed from a directory that did not contain <i>envprim.cfg</i>	Run envelope again, from the directory containing <i>envprim.cfg</i> .
There is no data in the file	Call Gentran:Server Customer Support. You must provide the exact wording of the message and the version of Gentran:Server you are using.

Error **There are three similar Error messages displayed from the Visual Mapper.**
Error attempting to add <label> to <GROUP name>
Error attempting to delete <GROUP name>
Error attempting to delete <label> from <GROUP name>

Explanation:
 An internal error occurred in Gentran:Server.

Procedure:
 Call Gentran:Server Customer Support. Provide the complete text of this message and the version of Gentran:Server you are running.

Error **Error building primary key index.**

Message Type: **Error**
Program Module: **Application Editor**

Explanation:
 An internal error occurred in Gentran:Server.

Procedure:
 Call Gentran:Server Customer Support. Provide the complete text of this message and the version of Gentran:Server you are running.

(Continued on next page)

Error **Error Creating <directory name>****Message Type:** Error**Program Module:** Main Window (Settings)**Explanation:**

Gentran:Server is unable to create the directory named in the Setup Directory dialog box.

Procedure:

Use this procedure in response to this message:

Step	Action
1	Determine whether a slash or backslash follows the directory name. If so, delete the extra mark and continue.
2	Check the read and write permissions for the upper-level directory. If necessary, change them to allow Gentran:Server access.
3	Determine whether enough disk space is available for the directory Gentran:Server is attempting to create. You may need additional space.

Errors **Errors occurred in <location of error>:****Message Type:** Error**Program Module:** Compiler**Explanation:**

The compiler found one or more unspecified errors while compiling a map.

Procedure:

Use this procedure in response to this message:

Step	Action
1	Check the part of the map indicated in the message.
2	Make any corrections necessary and recompile the map.

(Continued on next page)

Error Error occurred while reading file <file name>.

Message Type: Error

Program Module: Application Editor and Visual Mapper

Explanation:

Gentran:Server is unable to read the identified file (<file name>).

Procedure:

Use this procedure in response to this message:

Step	Action	
1	View the Setup Directories dialog box to identify the directory that contains your temporary files.	
2	Use File Manager to determine whether the directory exists and whether it contains the file.	
3	Use this table to determine your next action.	
	IF the file...	THEN check the...
	Does <i>not</i> exist	Write permissions on the directory.
	Does exist	Read permissions on the file and directory.
4	View the contents of the file to determine whether it is empty. If it is, contact Gentran:Server Customer Support.	

(Continued on next page)

Error **Error Opening File: <Map File name>****Message Type:** Error**Program Module:** Visual Mapper**Explanation:**

The Visual Mapper is unable to open the file identified in the message.

Procedure:

Use this procedure in response to this message:

Step	Action	
1	View the Setup Directories dialog box to identify the directory that contains your temporary files.	
2	Use File Manager to determine whether the directory exists and whether it contains the file.	
3	Use this table to determine your next action.	
	IF the file...	THEN check the...
	Does <i>not</i> exist	Write permissions on the directory.
	Does exist	Read permissions on the file and directory.
4	View the contents of the file to determine whether it is empty. If it is, contact Gentran:Server Customer Support.	

(Continued on next page)

Error **Error saving translation settings****Message Type:** **Error****Program Module:** **Main Window (Translate)****Explanation:**

Gentran:Server was unable to save the translation settings.

Procedure:

Use this procedure in response to this message:

Step	Action
1	Check the amount of disk space available for Gentran:Server to complete this task. If necessary, provide more disk space.
2	Check the permissions of the <i>transin.dat</i> or <i>transout.dat</i> file and the directory containing them. If necessary, change the permissions.
3	Run the translation again.

failed **Failed to allocate translate table memory****Message Type:** **Error****Program Module:** **lftran****Explanation:**

The lftran program encountered the error indicated and was unable to complete the current process.

Procedure:

Compile the map on the platform on which you are running lftran, then run the translation again. The map must be compiled on the same platform on which you are running lftran and must be in binary format.

(Continued on next page)

failed **failed - error code <error number>**

Message Type: Error
Program Module: edifrmfmat

Explanation:

The edifrmfmat program encountered the error indicated and was unable to complete the current process.

Procedure:

See the “References” topic in the Online Help or the chapter [Command Reference](#) in the *Gentran:Server for UNIX and Workstation Technical Reference Guide* to find the meaning of the error number referred to in this message.

(Continued on next page)

Failed Failed to open standard data file - <file name>

Message Type: Error
Program Module: Standard/IG Editor (AutoTrim)

Explanation:
 The Standard/IG Editor was unable to open the identified file (<file name>) or perform AutoTrim.

Procedure:
 Use this procedure in response to this message:

Step	Action	
1	View the Setup Directories dialog box to identify the directory that contains your temporary files.	
2	Use File Manager to determine whether the directory exists and whether it contains the file.	
3	Use this table to determine your next step.	
	IF the file...	THEN...
	Does <i>not</i> exist	Reload it from the Gentran:Server installation disks or tape.
	Exists, but the correct directory does not	Create the directory and move the file into that directory.
	And the directory both exist, but the file is not in the correct directory	Move the file.
	Has the correct name and is in the correct directory	Check the permissions and change them if necessary.

(Continued on next page)

Failed Failed to save file location paths**Message Type:** Error**Program Module:** Main Window (Settings)**Explanation:**

Gentran:Server was unable to save the file locations specified in the **Setup Directories** dialog box.

Procedure:

Use this procedure in response to this message:

Step	Action	
1	Open the Setup Directories dialog box and specify the correct file locations again.	
2	Click OK . Note If a directory does not exist, Gentran:Server will prompt you to create it.	
3	Use this table to determine your next action.	
	If you...	THEN...
	Want to create the directories	1. Click Yes . 2. Use File Manager to verify that the directories exist. Note If they do not exist, Gentran:Server may not have the correct permissions to create directories. Check the permissions, change them if necessary, and then enter the directory locations again.
Do <i>not</i> want to create the directories	Click No .	

(Continued on next page)

Failed **Failed writing envprim.cfg**
Message Type: Error
Program Module: Main Window (Settings)

Explanation:
Gentran:Server was unable to write the configuration.

Procedure:
Use this procedure in response to this message:

Step	Action
1	Check the amount of disk space available for Gentran:Server to complete this task. If necessary, provide more disk space.
2	Check the permissions of <i>envprim.cfg</i> and <i>\$EDI_ROOT</i> and the directory containing them. If necessary, change the permissions.
3	Run the process again.

Field **Field <Field Name> is the last field in the record, cut/delete the record instead.**

Message Type: Error
Program Module: Standard/IG Editor

Explanation:
Gentran:Server is unable to delete or cut the last or only field in a record. The **Edit/Delete Marked** function is unavailable when the record has only one field.

Procedure:
Use one of these responses if you receive this message.

IF you want to...	THEN you must...
Delete the field	Cut or delete the record.
Delete the field <i>and</i> retain the record	Add a new field to the record before deleting the currently selected field.

(Continued on next page)

File File <file name> does not contain the required information.

Message Type: Error

Program Module: Application Editor and Visual Mapper (AutoMapper)

Explanation:

The file indicated <file name> is empty.

Procedure:

Use one of these responses if you receive this message:

IF you are...	THEN specify...
Using the Application Editor	The name of a flat file that contains the needed application data format information.
Using AutoMapping	A complete standard or install this standard again to be sure that all files contain the necessary information.

(Continued on next page)

File **File: <file name> does not exist**

Message Type: **Error**
Program Module: **Visual Mapper**

Explanation:
 The Visual Mapper is unable to locate the identified file.

Procedure:
 Use this procedure in response to this message:

Step	Action						
1	View the Setup Directories dialog box to identify the directory that contains your temporary files.						
2	Use File Manager to determine whether the directory exists and whether it contains the file.						
3	Use this table to determine your next action.						
	<table border="1" style="width: 100%;"> <thead> <tr> <th style="text-align: left;">IF the file...</th> <th style="text-align: left;">THEN...</th> </tr> </thead> <tbody> <tr> <td>Is in the wrong directory</td> <td>Move it.</td> </tr> <tr> <td>Does not exist</td> <td>Create the file or specify another file.</td> </tr> </tbody> </table>	IF the file...	THEN...	Is in the wrong directory	Move it.	Does not exist	Create the file or specify another file.
IF the file...	THEN...						
Is in the wrong directory	Move it.						
Does not exist	Create the file or specify another file.						

File **File <file name> is already open.**

Message Type: **Informational**
Program Module: **Application and Standard/IG Editors and Visual Mapper**

Explanation:
 Gentran:Server is unable to open two copies of the same file simultaneously. The selected file is currently open and/or in use by another user.

Procedure:
 No action necessary. You can use the open windows list at the bottom of the Window menu to select and switch to the desired open file if you are using the Workstation product level. If you are using the Gentran:Server product level or higher, you must wait until the file is closed.

(Continued on next page)

File File:<file name> is currently in use - Delete File?

Message Type: Warning
Program Module: Main Window

Explanation:

Gentran:Server is prompting you to confirm the deletion of the file that is currently open.

Procedure:

Use this procedure in response to this message:

IF you...	THEN click...
Want to delete this file after closing it	Yes.
Want to save this file after closing it	No.

File File: <file name> exists. Overwrite File?

Message Type: Warning
Program Module: Application and Standard/IG Editors and Visual Mapper

Explanation:

The name specified is currently in use by another file. Gentran:Server is prompting you to overwrite the original file or use a different name.

Procedure:

Use one of these responses to correct the error.

IF you want to...	THEN click...
Overwrite the existing file	Yes.
Retain the existing file and assign this file a different name	No.

(Continued on next page)

File **File: <file name> is not a valid Application/IG****Message Type:** Error**Program Module:** Application and Standard/IG Editors and Visual Mapper**Explanation:**

The file identified is neither an application description or an implementation guide. Gentran:Server is unable to open the file using the Application or Standard/IG Editors or Visual Mapper.

Procedure:

Use this procedure in response to this message:

Step	Action
1	Specify an application description or implementation guide.
2	Move, delete, or rename the file first selected.

File **File: <file name> is not a valid Map File****Message Type:** Error**Program Module:** Visual Mapper**Explanation:**

The file identified is not a map. Gentran:Server is unable to open the file using the Visual Mapper.

Procedure:

Use this procedure in response to this message:

Step	Action
1	Specify a map file (.map).
2	Move, delete, or rename the file first selected.

(Continued on next page)

File **File: <file name> is not a valid Standard/IG**

Message Type: Error

Program Module: Standard/IG Editor and Visual Mapper

Explanation:

The file identified is not an implementation guide. Gentran:Server is unable to open the file using the Standard/IG Editor or Visual Mapper.

Procedure:

Use this procedure in response to this message:

Step	Action
1	Specify an implementation guide.
2	Move, delete, or rename the file first selected.

FIXED **FIXED LENGTH must be a numeric**

FIXED LENGTH too large; must not exceed 6144

Message Type: Error

Program Module: Application Editor

Explanation:

Gentran:Server accepts only a positive, numeric value from 1 to 6144 (inclusive) for the FIELD LENGTH parameter.

Internal **Internal error # <error number>. Please report this to product support.**

Message Type: Error

Program Module: Compiler

Explanation:

The compiler encountered an error (<error number>) and is unable to compile this map.

Procedure:

Call Gentran:Server Customer Support. Provide them with the exact wording of the message and the version of Gentran:Server you are using.

(Continued on next page)

INTERNAL

INTERNAL ERROR: Cannot find the destination element <destination element>, therefore cannot record the mapping instruction <mapping instruction>. Please report this to product support.

INTERNAL ERROR: Cannot find the source element <source element>, therefore cannot proceed with compiling the mapping instruction <mapping instruction>. Please report this to product support.

Message Type: Error
Program Module: Compiler

Explanation:
The compiler is unable to find the destination or source field/element used in the identified mapping instruction.

Procedure:
Use this procedure in response to this message:

Step	Action
1	Open the map, then find the identified destination or source item and mapping instruction.
2	Call Gentran:Server Customer Support. Provide them with the exact wording of the message and the mapping instruction. You must also provide the version of Gentran:Server you are using.

(Continued on next page)

Invalid **Invalid file name****Message Type:** Error**Program Module:** Application Editor**Explanation:**

The Application Editor is unable to open the file identified in the message.

Procedure:

Use this procedure in response to this message:

Step	Action	
1	View the Setup Directories dialog box to identify the directory that contains your temporary files.	
2	Use File Manager to determine whether the directory exists and whether it contains the file.	
3	Use this table to determine your next action.	
	IF the file...	THEN...
	Exists, but the correct directory does not	Create the directory and move the file into that directory.
	And the directory both exist, but the file is not in the correct directory	Move the file.
	Has the correct name and is in the correct directory	Check the permissions and change them, if necessary.

(Continued on next page)

Invalid **Invalid loop boundaries****Message Type:** Error**Program Module:** Application and Standard/IG Editors**Explanation:**

A noncontiguous records/segments are marked and/or certain fields/elements are marked but the record/segment containing them is not. These are invalid loop boundaries.

Procedure:

Use this procedure in response to this message:

Step	Action
1	Click Clear All Marks from the Mark menu.
2	Click Collapse All from the View menu to view only the records/segments you want in the loop. To mark each desired record/segment, move the focus to the item and press F5. Do this for each item in turn.
3	Select Make Loop from the Edit menu (CTRL+L).

(Continued on next page)

Invalid **Invalid Original Value data****Invalid Substitute Value data****Message Type:** Error**Program Module:** Synonym and Thesaurus Editors**Explanation:**

The current version of the list is missing one or more Original or Substitute values. Each value entered in the Original column must have a partner value in the Substitute column.

Procedure:

Use this procedure in response to this message:

Step	Action
1	Enter a value in the Original Value column for every entry in the Substitute Value column. Enter a value in the Substitute Value column for every entry in the Original Value column.
2	Click Save List or Save List As from the File menu.

Loop **Loop count must be a numeric or >1****Message Type:** Error**Program Module:** Application and Standard/IG Editors**Explanation:**

The value entered for the loop count is invalid. The loop count of a record/segment must be either a positive numeric value from 1 to 32760 or ">1".

Procedure:

Enter a loop count that is a positive numeric value from 1 to 32760 or ">1".

(Continued on next page)

Map **Map: <Map File name> is currently open. All maps must be closed before starting the <string>, do you wish to close it?**

Message Type: Warning
Program Module: Various

Explanation:

All maps must be closed before Gentran:Server can perform the requested operations. The identified map is currently open.

Procedure:

Use one of these responses if you receive this message

IF you want to...	THEN Select...
Continue	Yes. Note If you select Yes and the open map contains unsaved changes, Gentran:Server prompts you to save the changes before it closes the map. <ul style="list-style-type: none">▶ Click Yes to save the changes before closing the file.▶ Click No to close the file without saving changes.
Cancel the new operation and keep the map open	No.

(Continued on next page)

Map **Map: <Map File name> is currently open. Do you wish to close it?**

Message Type: Prompt

Program Module: Visual Mapper

Explanation:

The selected map is currently open. The Visual Mapper is prompting you to close the open file or leave it open.

Procedure:

Use one of these responses if you receive this message

IF you want to...	THEN Select...
Close the file	Yes.
Leave the file open.	No.

MAX **MAX length must be a numeric**

MAX length too large; must not exceed 6144

Message Type: Error

Program Module: Application and Standard/IG Editors

Explanation:

The maximum length of a variable length field must be a positive numeric value from 1 to 6144. The value entered is invalid

Procedure:

Specify a maximum length that is a positive number from 1 to 6144.

MAX **MAX occurrence must be a numeric or >1**

Message Type: Error

Program Module: Application and Standard/IG Editors

Explanation:

The maximum occurrence of a record/segment must be either a positive numeric value from 1 to 32760 or the value ">1." The value entered is invalid.

Procedure:

Either specify a maximum occurrence that is a positive number from 1 to 32760 or enter ">1."

(Continued on next page)

Maximum **Maximum string length reached.**

Message Type: **Warning**

Program Module: **Synonym and Thesaurus Editors**

Explanation:

A maximum of 80 characters are allowed for each original or substitute value entered into a synonym or thesaurus list. You have entered 80 characters. No additional characters will be accepted for the value you are entering.

Procedure:

Go to the next item you will enter on the list.

Note

After 43 characters, a string of pound signs (#) appears in the column in place of the text. This is for display purposes only to indicate that the field contains a value larger than the screen display field. The text string remains in memory, and the actual value displays in the text entry box.

MIN **MIN length must be a numeric**

Message Type: **Error**

Program Module: **Application and Standard/IG Editors**

Explanation:

The minimum length of a variable length field must be a positive numeric value from 1 to 99. The value entered is invalid.

Procedure:

Specify a minimum length that is a positive number from 1 to 99.

(Continued on next page)

MIN **MIN length must be less than or equal to MAX length. Make MAX length equal <MIN length>?**

Message Type: **Warning**

Program Module: **Application and Standard/IG Editors**

Explanation:

By definition, the minimum length of a field must be less than or equal to the maximum length for the same. The value entered is longer than the maximum length for the field specified.

Procedure:

Use one of these responses if you receive this message

- ▶ Change the value entered to be less than or equal to the maximum length allowed for this field.
- ▶ Have Gentran:Server change the maximum length for this field to equal the value you entered for the minimum length.

Missing **Missing a required <argument> in the expression.**

Message Type: **Error**

Program Module: **Compiler**

Explanation:

The currently displayed mapping instruction is invalid. It lacks a required argument.

Procedure:

Change the mapping instruction to include all required arguments.

Reference

See the chapter [Mapping](#) in the *Gentran:Server for UNIX and Workstation Mapping and Translation Guide* for more information about the arguments required for available operations.

(Continued on next page)

Missing **Missing valid destination; cannot create mapping**

Message Type: Error
Program Module: Visual Mapper

Explanation:
 No destination item is marked for the current mapping. You must mark one or more destination(s) to create a mapping GROUP.

Procedure:
 Use this procedure in response to this message:

Step	Action
1	Mark one or more destination item(s).
2	Click the right mouse button to create the mapping GROUP.

MTIMER **MTIMER was suspended during its last execution, resume MTIMER where it left off?**

Message Type: Prompt
Program Module: Main Window (Tools)

Explanation:
 The Task Scheduler was closed prior to completing the last series of scheduled tasks. You must choose between running all of the tasks again or running only those that were not executed during the previous session.

Procedure:
 Use one of these responses if you receive this message:

IF you want to run...	THEN Click...
Only those scheduled tasks that were not executed during the previous session	Yes.
Run all scheduled tasks, including those executed during the previous session	No.

(Continued on next page)

Must Must be on a mapped item in the destination to delete a GROUP.

Must be on a mapped item in the source to delete a GROUP.

Message Type: Error
Program Module: Visual Mapper

Explanation:

The selected item is on the destination side of the map and/or is not mapped. The **Delete Group** option is available only when the focus highlights a mapped item on the Source side of the map.

Procedure:

Use this procedure in response to this message:

Step	Action
1	Click the mapped item you want to delete from the source side of the map.
2	Click Delete GROUP from the Map Item menu.

Must Must be on a mapped item in the destination to delete it from a GROUP.

Must be on a mapped item in the source to delete it from a GROUP.

Message Type: Error
Program Module: Visual Mapper

Explanation:

The selected item is not mapped. To delete an item from a GROUP, you must first select it with the focus.

Procedure:

Click the source or destination item you want to delete and press DELETE.

(Continued on next page)

Must Must be on a mapped item in the destination to edit mapping instructions.
Must be on a mapped item in the source to edit mapping instructions.

Message Type: Error
Program Module: Visual Mapper

Explanation:

The selected item is not mapped. To edit mapping instructions, you must move the focus onto a mapped item on the active side of the map.

Procedure:

Use this procedure in response to this message:

Step	Action
1	Click the mapped item you want to edit from the either side of the map.
2	Click the Mapping Instructions ToolBar button.

Must Must be on the beginning record of a loop to remove loop structure.

Message Type: Error
Program Module: Application and Standard/IG Editors

Explanation:

To remove a loop structure, you must have the focus on the first record/segment of the loop. Currently, the focus is on another record/segment in the loop or on a field/element.

Procedure:

Use this procedure in response to this message:

Step	Action
1	Move the focus to the first record/segment in the loop.
2	Select Remove Loop from the Edit menu (CTRL+R).

(Continued on next page)

Must **Must remove existing record id field**
Message Type: **Error**
Program Module: **Application Editor**

Explanation:

A field other than the one currently selected is marked as the Record ID for this record. The Mark Record ID option is unavailable when a record contains a marked Record ID field.

Procedure:

Use this procedure in response to this message:

Step	Action
1	Click the field in this record currently marked as the Record ID and click Unmark Record ID on the Mark menu.
2	Click the field in this record you want to mark as the Record ID and click Mark Record ID on the Mark menu.

Must **Must unmark existing TP Code field**
Message Type: **Error**
Program Module: **Application Editor**

Explanation:

A field other than the one currently selected is marked as the TP Code field for this record. To mark this field as the TP Code, you must first unmark the other one.

Procedure:

Use this procedure in response to this message:

Step	Action
1	Click the field currently marked as the TP Code, then click Unmark TP Code on the Mark menu.
2	Click the field you want to mark as the TP Code and click Mark TP Code from the Mark menu.

(Continued on next page)

Name Name <list name> already exists. Do you wish to overwrite it?

Message Type: Warning
Program Module: Synonym and Thesaurus Editors

Explanation:
 The name entered is currently assigned to another synonym or thesaurus list. You can overwrite the original list or save this file under another name.

Procedure:
 Use one of these responses if you receive this message

IF you want to...	THEN select...
Overwrite the original list	Yes.
Save this list under another name and preserve the original	No and enter another name for this list.

No No data selected to copy.
 No data selected to cut.

Message Type: Error
Program Module: Application and Standard/IG Editors

Explanation:
 Currently, no items are marked. The **Copy Marked** and **Cut Marked** options are available only when one or more items are marked.

Procedure:
 Use this procedure in response to this message:

Step	Action
1	Click the item(s) you want to copy or cut and press F5.
2	Click Copy Marked or Cut Marked on the Edit menu.

(Continued on next page)

No No element sequence number information**Message Type:** Error**Program Module:** Visual Mapper (Fast Entry Mode)**Explanation:**

When in Fast Entry Mode, the Visual Mapper can map standard or implementation guide items to the selected item only if the segment ID and the sequence number of the element or sub-element are entered. No element and/or subelement sequence was entered for the selection you are mapping.

Procedure:

Enter the sequence number of the element and/or subelement and click `ENTER`.

No No field has yet been made a Record ID**Message Type:** Error**Program Module:** Application Editor**Explanation:**

The **Unmark Record ID** option is available only if the selected record contains a field marked as the Record ID. Currently, no field in the selected record is marked as the Record ID.

Procedure:

No other action is necessary. You can now mark a field in this record as the Record ID.

No No field has yet been made a TP Code**Message Type:** Error**Program Module:** Application Editor**Explanation:**

The **Unmark TP Code** option is available only if the selected record contains a field marked as the TP Code. Currently, no field in the selected record is marked as the TP Code.

You can mark only one field as the TP Code. That record must be in the first record.

Procedure:

No other action is necessary. If the focus is in the first record, you can now mark a field in this record as the TP Code.

(Continued on next page)

No No field information**Message Type:** Error**Program Module:** Visual Mapper (Fast Entry Mode)**Explanation:**

When in Fast Entry Mode, the Visual Mapper can map application items items to the selected item only if the Record ID and field name of the destination item are entered. No field name was entered for the item you are mapping.

Procedure:

Enter the name of the field and press ENTER.

No No GROUP was selected for mapping instructions**Message Type:** Error**Program Module:** Visual Mapper**Explanation:**

You can edit mapping instructions only after selecting an item and the name of the mapping GROUP you want to modify.

Procedure:

Use this procedure in response to this message:

Step	Action
1	Click a mapped item and, if necessary, highlight the name of the mapping GROUP for which you want to edit mapping instructions.
2	Highlight the name of the mapping GROUP that contains the mapping instructions you want to edit.
3	Click the Mapping Instructions button on the toolbar.

(Continued on next page)

No No LABEL information**Message Type:** Error**Program Module:** Visual Mapper (Fast Entry Mode)**Explanation:**

You must enter label information in the **Field/Element label** text box when the **Use labels for Quick Entry** option is active. No label was entered for the selected item.

Procedure:

Enter the label of the selected field or element in the **Field/Element label** text box and press ENTER.

No No mapping instructions found for this record.**Message Type:** Informational**Program Module:** Visual Mapper**Explanation:**

The Visual Mapper can sort mapping instruction only if they exist. Currently, no mapping instructions exist for the selected record or segment.

Procedure:

Use one of these responses if you receive this message

- ▶ Create mapping instructions for the selected source or segment and then sort them.
- ▶ Click another source record or segment that has mapping instructions.

No No remaining disk space encountered attempting to write <file name>**Message Type:** Error**Program Module:** Installation**Explanation:**

There is insufficient disk space available to allow the installation program to write the specified *.DLL* file.

Procedure:

You must make more disk space available, then run the installation program again.

(Continued on next page)

No **No segment/record information**

Message Type: Error
Program Module: Visual Mapper (Fast Entry Mode)

Explanation:
When in Fast Entry Mode, the Visual Mapper can map standard or implementation guide items to the selected item only if the segment ID and the sequence number of the element or sub-element are entered. No record or segment ID was entered for the selection you are mapping.

Procedure:
Enter the ID of the record/segment containing the field/element you want to map and press ENTER.

No **No standard files found. Check preference paths.**

Message Type: Error
Program Module: Standard/IG Editor and Visual Mapper

Explanation:
The directory specified does not contain any standards files.

Procedure:
Use this procedure in response to this message:

Step	Action
1	Click Setup Directories on the Settings menu of the Main or the Visual Mapper menu bar.
2	Enter the path and name for the directory containing the standards in the Setup Directories dialog box. If no standards exist, run the installation process again and copy the standards required to your hard drive or network drive.

(Continued on next page)

No **No Synonym Filename has been assigned.****Message Type:** Error**Program Module:** Synonym Editor**Explanation:**

An internal error has occurred in Gentran:Server.

Procedure:

Call Gentran:Server Customer Support. Provide them with the complete text of this message and the version of Gentran:Server you are running.

Nothing **Nothing to delete****Message Type:** Error**Program Module:** Application and Standard/IG Editors**Explanation:**The **Delete Marked** option is available only when you select a marked item.**Procedure:**

Use this procedure in response to this message:

Step	Action
1	Click the item(s) you want to delete, then press F5.
2	Click Delete Marked on the Edit menu.

(Continued on next page)

Nothing **Nothing to edit. First select a condition, mapping, or macro to edit**

Message Type: **Error**
Program Module: **Compiler**

Explanation:

The Edit button in the Mapping Instructions window is active only when a condition, a mapping, or a macro is selected.

Procedure:

Use this procedure in response to this message:

Step	Action
1	Click a condition, a mapping, or a macro.
2	Click the Edit button.

Number **Number of attributes must be less than 50**

Message Type: **Error**
Program Module: **Application Editor**

Explanation:

The **Descriptions** column in the **Read Application Data Description Layout** dialog box can list a maximum of 50 attributes. Currently the column lists more than 50 attributes.

Procedure:

Reduce the number of attributes in the Description Fields column to 50 or fewer.

Number **Number of output files exceeded max of <Number>**

Message Type: **Error**
Program Module: **Iftran**

Explanation:

Gentran:Server is unable to open all of the output files required to process the data.

Procedure:

Restructure your use of output files or split the data so that the pieces are processed separately.

(Continued on next page)

Only Only a field of the first record of the application can be marked as a TP Code

Message Type: Error
Program Module: Application Editor

Explanation:

The selected field is not in the first record of the application. You can mark only a field in the first record as the TP Code.

Procedure:

Click the a field in the first record, then click **Mark TP Code** on the **Mark** menu.

Only Only allowed to cut one selected block of data at a time.

Message Type: Error
Program Module: Application and Standard/IG Editors

Explanation:

The **Cut Marked** option is active only when a single block of data is marked. Currently, two or more blocks of data are marked and selected. A block of data is a contiguous string consisting of element, composite element, and element.

Procedure:

Use this procedure in response to this message:

Step	Action
1	Click Clear All Marks on the Mark menu.
2	Click one block of data and press F5.
3	Click Cut Marked on the Edit menu.

(Continued on next page)

Operation	<p>Operation <operation> does not make sense in this context.</p> <p>Message Type: Error Program Module: Compiler</p> <p>Explanation: The identified operation is not valid for the mapping instruction you are creating.</p> <p>Procedure: Change the operation you are using to create the mapping instruction.</p> <p>Reference See the chapter Working with Mapping Instructions in the <i>Gentran:Server for UNIX and Workstation Mapping and Translation Guide</i> for information about using operations in mapping instructions.</p>
Operation	<p>Operation <operation> is incomplete. It is missing argument number <number>.</p> <p>Operation <operation> is incomplete. It is missing required data.</p> <p>Message Type: Error Program Module: Compiler</p> <p>Explanation: The currently displayed mapping instruction lacks a required argument or data item. The message indicates the number of the missing argument (in order -- from left to right) when appropriate.</p> <p>Procedure: Modify the mapping instruction to include all required arguments and data items.</p> <p>Reference See the chapter Mapping in the <i>Gentran:Server for UNIX and Workstation Mapping and Translation Guide</i> for information about the arguments and data items required for this operation.</p>

(Continued on next page)

Permanently **Permanently delete all marked items?****Message Type:** Prompt**Program Module:** Application and Standard/IG Editors**Explanation:**

Gentran:Server requires you to confirm that you want to delete all marked items.

Procedure:

Use this procedure in response to this prompt.

Step	Action	
1	Verify that you want to permanently delete all of the items marked. The names of marked items are in blue.	
2	Use this table to determine your next action.	
	IF you...	THEN...
	Want to delete all items marked	Click Yes .
Do <i>not</i> want to delete all items marked	1. Click No . 2. Click Clear All Marks on the Mark menu. 3. Mark only those items you want to delete. 4. Click Delete Marked from the Edit menu.	

(Continued on next page)

Permanently Permanently delete <GROUP name>? If you delete you will lose all <GROUP name> mapping instructions as well.

Permanently delete item <label> from <GROUP name>?

Message Type: Warning
Program Module: Visual Mapper

Explanation:
 Gentran:Server requires you to confirm that you want to delete a GROUP name or an item from a GROUP.

When you delete a GROUP, you also delete all mapping instructions in it.

When you delete an item from a GROUP, all mapping instructions containing it become incomplete.

Comment
 Display a Mapping Mini-report to see the mapping instructions in the GROUP.

Procedure:
 Use one of these responses if you receive this message

IF you want to...	THEN...
Delete all of the mapping instructions in the GROUP	Click Yes .
Delete the item from all mapping instructions in the GROUP	
Save at least one of the mapping instructions in the GROUP	Click No .
Retain the item in at least one of the mapping instructions in the GROUP	

Note
 You can delete individual instructions from the GROUP in the Mapping Instructions window.

Step	Action
1	Open the Mapping Instructions window.
2	Use the DELETE key to delete one or more of the mapping instruction.

(Continued on next page)

Please Please select a record first.

Message Type: Prompt
Program Module: Visual Mapper

Explanation:

The **Map if Record is absent** option is active only when a record is selected.

Procedure:

Select the record that you want to mark and click the option again.

Process Process all MTIMER jobs, even those scheduled to run before <current system date and time>

Message Type: Prompt
Program Module: Main Window (Tools)

Explanation:

The Task Scheduler is uncertain whether to run batch files scheduled for a time previous to the current date and time.

Procedure:

Use one of these responses if you receive this message:

IF you want to run...	THEN...
All scheduled jobs	Click Yes .
Only tasks scheduled from the current date and time forward	Click No .
Note To stop the Task Scheduler after starting it, press ALT+F4.	

(Continued on next page)

Record Record <label> is a start of a loop. Deleting it will delete all the items in the loop as well. Proceed?

Message Type: Warning
Program Module: Application and Standard/IG Editors

Explanation:
 Gentran:Server is prompting you to confirm the deletion. The record/segment you are trying to delete or cut is the first in a loop. If you delete or cut the first record/segment in a loop, the editors automatically delete or cut the entire loop. You can delete the first item only by first removing the loop structure.

Procedure:
 Use one of these responses if you receive this message

IF you want to...	THEN click...
Delete or cut all records/segments in the loop	Yes.
Retain other records/segments in the loop	No.

Record Record ID field and TP Code field cannot be the same

Message Type: Error
Program Module: Application Editor

Explanation:
 The selected field is currently marked as the Record ID or TP Code field. Gentran:Server allows you to mark a field only as one or the other, not both.

Procedure:
 Select another field for the Record ID or TP Code or remove the mark and proceed as intended.

(Continued on next page)

Save Save illegal instruction?

Message Type: Prompt
Program Module: Compiler

Explanation:

The mapping instruction created is illegal. Gentran:Server is prompting you to save the illegal mapping instruction. This allows you to correct the instruction later.

Procedure:

Use one of these responses if you receive this message

IF you want to...	THEN click...
Save the mapping instruction and correct it later	Yes.
Delete the illegal mapping instruction	No.

SEQ SEQ number length too large; must not exceed 32760**SEQ number must be a numeric**

Message Type: Error
Program Module: Standard/IG Editor

Explanation:

The SEQ (sequence) number must be a positive numeric value from 1 to 32760 inclusive.

Note

This field displays a maximum of 4 positions, but will accept a 5-position value.

Procedure:

Enter a SEQ number less than or equal to 32760.

(Continued on next page)

Source **Source file: <file name> does not exist**

Message Type: **Error**
Program Module: **Main Window (Translate)**

Explanation:
 Gentran:Server is unable to locate the source file specified.

Procedure:
 Use this procedure in response to this message:

Step	Action						
1	Identify the name of the directory in which you store your source files using the Setup Directories dialog box found under Settings on the Gentran:Server window.						
2	Use File Manager to determine whether the file exists and whether it is in the correct directory.						
3	Use this table to determine your next action.						
	<table border="1" style="width: 100%;"> <thead> <tr> <th style="text-align: left;">IF the file...</th> <th style="text-align: left;">THEN...</th> </tr> </thead> <tbody> <tr> <td>Is in the wrong directory</td> <td>Move it.</td> </tr> <tr> <td>Does not exist</td> <td>Recreate the file or specify another file.</td> </tr> </tbody> </table>	IF the file...	THEN...	Is in the wrong directory	Move it.	Does not exist	Recreate the file or specify another file.
IF the file...	THEN...						
Is in the wrong directory	Move it.						
Does not exist	Recreate the file or specify another file.						

Source **Source file: <file name> is not a valid file**

Message Type: **Error**
Program Module: **Main Window (Translate)**

Explanation:
 The selected file does not contain valid EDI data. Gentran:Server is able to open only valid EDI file.

Procedure:
 Specify a valid EDI file.

(Continued on next page)

Standards**Standards Load Error****Can't open <file name>, check file permissions****Message Type:** Error**Program Module:** Standard/IG Editor (UNIX only)**Explanation:**

The Standard/IG Editor does not have read permission for the selected standards file and/or the standards file directory.

Procedure:

Use this procedure in response to this message:

Step	Action
1	Select Setup Directories from the Settings menu to open the Setup Directories dialog box from the Main window.
2	Determine what directory is specified for your standards files.
3	Correct the permissions of the standards file directory so that Gentran:Server has read permissions.

(Continued on next page)

Suspend **Suspend current MTIMER job processing and resume on next MTIMER execution?**

Message Type: Prompt
Program Module: Main Window (Tools)

Explanation:
Gentran:Server is prompting you to suspend the execution of the Task Scheduler. The program displays this prompt when you close the Task Scheduler before all tasks are completed. If you suspend execution, the Task Scheduler retains a list of executed commands. When you run the Scheduler again, you will have the option of running only those tasks not previously executed or running all tasks lists.

Procedure:
Use one of these responses if you receive this message

IF you want to...	THEN click...
Retain the list of completed jobs	Yes.
Delete the list of completed tasks	No.

Tblload **Tblload allocation error: <number>**

Message Type: Error
Program Module: Iftran

Explanation:
There is not enough memory free to continue the translation. This can occur after compiling a map for Windows and then moving the Map Table to UNIX.

Procedure:
Chose one of these in response to this error:

- Close all other applications to free additional memory.
- Recompile the map for UNIX and then proceed.

If neither of these options correct the error, contact Gentran:Server Customer Support. You must provide them with the exact text of this message and the version of Gentran:Server you are running.

Note
The error number in the message points to the part of the code that requires more memory than is available.

(Continued on next page)

The The compiler corrected placement of the misplaced symbol <expression>. Please recheck the mapping instruction.

Message Type: Warning

Program Module: Compiler

Explanation:

Gentran:Server found the identified symbol in an invalid position and moved it to a valid position. However, the new position may not meet your needs.

Procedure:

Use this procedure in response to this message:

Step	Action	
1	Check the map and locate the symbol.	
2	Review the modified mapping instruction.	
3	Use this table to determine your next action.	
	If the symbol is positioned...	THEN...
	As you intended	No further action is required.
	<i>Not</i> as you intended	Move it and recompile the map.

(Continued on next page)

The **The compiler detected a circular reference in the instruction <mapping instruction> for group <GROUP name>. Compilation Stopped.**

Message Type: Error
Program Module: Compiler

Explanation:

Gentran:Server is unable to evaluate a mapping instruction that refers to itself. This mapping instruction contains a macro that refers back to the originating instruction or that references another macro that refers back to the originating instruction.

Procedure:

Use this procedure in response to this message:

Step	Action
1	Look at the map and find the identified mapping GROUP and the identified mapping instruction for that GROUP.
2	Check the macros used in the mapping instruction for a macro that references another macro that refers back to the originating instruction.
3	Correct the circular reference, and then recompile the map.

The **The compiler detected a misplaced <expression>. It was ignored.**

Message Type: Warning
Program Module: Compiler

Explanation:

The compiler found a mapping instruction with an argument or data item that is invalid in its current position. Gentran:Server ignored the argument or data item.

Procedure:

Use this procedure in response to this message:

Step	Action
1	Check the map to find the misplaced argument or data item.
2	Correct or remove the misplaced argument or data item and recompile the map before using it again.

(Continued on next page)

The The destination elements <element names> have multiple mappings of varying nature. This, together with retain being set for them, would result in inconsistent mapping/translation. The map is not successfully compiled.

Message Type: Error
Program Module: Compiler

Explanation:

The **Retain Field Value** option is set for destination elements to which multiple source items are mapped. This option sets the default value Gentran:Server uses for the destination field. If there are multiple sources mapped, Gentran:Server is unable to consistently apply the same default value. Any translation resulting from the use of this map may be inaccurate. To prevent the inaccurate translation of data, Gentran:Server will not compile the map.

Procedure:

To correct this error, you must modify the map such that the **Retain Field Value** option is set for a destination element to which only a single source item is mapped.

The The last or only subelement of a composite element cannot be individually deleted. Delete the composite element instead.

Message Type: Error
Program Module: Standard/IG Editor

Explanation:

The selected item is either the last or only subelement of a composite element. The **Delete Marked** option is not available if the composite element has only one subelement or will have none after this action.

Procedure:

Use one of these responses if you receive this message:

IF you want to...	THEN you must...
Delete the subelement	Delete the composite element.
Delete the subelement but retain the composite element	Add a new subelement before deleting the one currently selected.

(Continued on next page)

The The mapping instruction <mapping instruction> might result in data which will not match the data type of <destination element>.

Message Type: Warning
Program Module: Compiler

Explanation:

The selected source value may have a different data type than the selected destination item. This may cause expected when used in a translation.

Procedure:

Use this procedure in response to this message:

Step	Action
1	Cancel this mapping instruction and close the Mapping Instructions window.
2	Click on the destination side of the map to make it active.
3	Click the Standard/IG Editor (or Application Editor) toolbar button.
4	With the editor open, determine the data type of the destination item identified in the message.
5	Change the data type to match that of the source item if necessary.
6	Save and close the implementation guide or application description.
7	Create the mapping instruction again. Comment It is safer to map source items only to destination values that have the same data type.

(Continued on next page)

The The mapping instruction you are deleting or modifying is referenced in other locations. Are you sure you want to proceed?

Message Type: Warning
Program Module: Compiler

Explanation:

The selected macros is used in multiple mapping instructions. Deleting the macro will invalidate all mapping instructions in which it is used. Gentran:Server is prompting you to confirm the deletion request.

Procedure:

Use one of these responses if you receive this message

IF you want to...	THEN click...
Delete the macro and invalidate all mapping instructions in which it is used	Yes.
Cancel the deletion request	No.

(Continued on next page)

The The mapping instructions for this GROUP were edited in expert mode, and so this session will temporarily be set to expert mode

Message Type: Informational
Program Module: Visual Mapper (Mapping Instructions)

Explanation:
 Mapping instructions for a GROUP can be edited only in the mode in which they were originally were created or edited.
 The mapping instructions for the selected GROUP is created or in expert mode. Gentran:Server will automatically set the Visual Mapper to the mode necessary to allow the edit to continue.

Procedure:
 No action required; session is temporarily set to expert mode.
 Use this procedure to change the mapping instructions for this mapping GROUP from expert mode to standard mode.

Step	Action
1	Delete all mapping instructions from this GROUP. Note When the Mapping Instructions window closes, Gentran:Server will automatically delete the GROUP.
2	Click User Setup on the Settings menu to open the User Setup dialog box
3	Uncheck the Expert Mode check box
4	Select OK .
5	Recreate the mapping GROUP and create the mapping instructions in standard mode.

(Continued on next page)

The The name entered is too long, synonym file name is limited to 19 letters.

Message Type: Error
Program Module: Compiler

Explanation:

Synonym file list names can be a maximum of 19 characters in length. The list name entered contains more than 19 characters.

Procedure:

Enter synonym file list name that is from 1 to 19 characters in length.

The The sub-elements (or components) of a composite element cannot be individually cut; cut the composite element instead.

Message Type: Error
Program Module: Standard/IG Editor

Explanation:

The **Cut Marked** option is active only when an entire composite element is selected. Currently only a single sub-element is selected.

Procedure:

Use one of these responses if you receive this message

IF you want to...	THEN...
Cut all sub-elements in this composite element	1. Mark only the composite element 2. Click Cut Marked on the Edit menu.
Retain at least one of the sub-elements in this composite element	No action is needed.

(Continued on next page)

The **The value you entered is not numeric. Please enter a number.**

Message Type: Error
Program Module: Compiler

Explanation:
 The compiler requires a positive whole number (1, 2, 3, 4) in this field. The value entered is a real number, an alphabetic character(s), or a symbol(s).

Procedure:
 Enter a positive whole number in the selected field.

There **There are more fields in your test data segment <segment name> than exist in the standard segment <segment name>. Ignoring extra fields.**

Message Type: Warning
Program Module: Standard/IG Editor (AutoTrim)

Explanation:
 The **AutoTrim** facility found fields in the sample EDI data that do not exist in the standard. **AutoTrim** will ignore the extra fields.

Procedure:
 Use this procedure in response to this message:

Step	Action	
1	Determine whether the document version you are using is correct.	
2	Use this table to determine your next action.	
	IF the document version is...	THEN...
	Not correct	Run AutoTrim again with the correct document version.
	Correct	Map the information in the extra fields to elements in different segments if you want AutoTrim to map them.

(Continued on next page)

There There are no more mapping instructions in this group that can be deleted. If you would like to remove any reference to this mapping, please delete the group <group> itself.

Message Type: Warning
Program Module: Compiler

Explanation:

The currently selected mapping GROUP contains no mapping instructions. Gentran:Server will delete the currently selected GROUP unless you add instructions before exiting the Mapping Instructions window.

Procedure:

To eliminate this warning, you must add mapping instructions to the GROUP.

Note

You can delete the GROUP by clicking **Done** on the Mapping Instructions window and responding **Yes** to the prompt that Gentran:Server then displays.

There There is a circular reference in macro <macro> to itself.

Message Type: Error
Program Module: Compiler

Explanation:

The identified macro references itself or another macro by which it is referenced. The compiler is unable to evaluate the macro because of this circular reference.

Procedure:

Use this procedure in response to this message:

Step	Action
1	Look at the map and find the identified macro.
2	Correct the circular reference.
3	Compile the map again.

(Continued on next page)

This This action will delete the entire mapping instruction. Proceed?

Message Type: Warning
Program Module: Visual Mapper

Explanation:
 Gentran:Server is prompting you to confirm your decision to delete the entire mapping instruction.

Procedure:
 Use one of these responses if you receive this message.

IF you want to...	THEN...
Delete the entire mapping instruction	Click Yes .
Retain the entire mapping instruction	Click No .
Want to delete only part of a condition, mapping, or macro	Double-click on the condition, mapping, or macro to delete it.

This This group <GROUP name> contains no mapping instructions, it will be deleted if you exit the Mapping Instructions screen now, continue?

Message Type: Warning
Program Module: Visual Mapper

Explanation:
 The currently selected GROUP is empty and will be deleted when you exit the Mapping Instruction window. Gentran:Server is prompting you to confirm your request to exit the Mapping Instruction screen and delete the identified GROUP.

Procedure:
 Use one of these responses if you receive this message.

IF you want to...	THEN click...
Delete this GROUP	Yes
Save this GROUP	No. Note You <u>must</u> add one or more mapping instructions to this GROUP in order to save it.

(Continued on next page)

This This is a redundant mapping. All of the mapped elements are contained in mapping group <GROUP name>.

Message Type: Error
Program Module: Visual Mapper

Explanation:

The Visual Mapper is unable to accept a new mapping GROUP that is an exact copy of another GROUP. The new GROUP you are trying to add is an exact duplicate of one listed under another GROUP name.

Procedure:

Use one of these responses if you receive this message

IF you want to...	THEN...
Create a new mapping instruction for the selected GROUP	<ol style="list-style-type: none">1. Select an item in the GROUP2. Click the MI button on the toolbar.3. Create the new mapping instructions.
Add or delete an item from the GROUP	<ol style="list-style-type: none">1. Select an item in the GROUP2. Click View Mapped Items.3. Select the GROUP and click Add/Delete Item to/from GROUP on the Map Items menu.

(Continued on next page)

This This type of mapping requires a source item within a condition. This mapping will not be written to the compiled map.

Message Type: Error
Program Module: Visual Mapper

Explanation:

Gentran:Server is able to map system variables or a function of a system variable to a destination only if the mapping instruction contains a source item or a condition that references a source item.

Procedure:

Use this procedure in response to this message:

Step	Action
1	Add the desired source item to the mapping GROUP
2	Open the Mapping Instructions window and display the mapping instruction that lacks a source.
3	Edit the mapping instruction to add a condition that refers to the source item. Note When determining the type of condition to add, consider when you want Gentran:Server to execute this mapping instruction.

This This version does not support dates beyond the year 2036.

Message Type: Information
Program Module: Iftran

Explanation:

The system displays this message when the date entered is greater or equal to 2036. This version of the software is unable to manipulate dates occurring during or after the year specified.

(Continued on next page)

Trading **Trading Partnership File records are of the wrong format. Perhaps you did not run a TP file conversion.**

Message Type: Error
Program Module: tpadmin

Explanation:

You tried to access Trading Partner records created with a version of Gentran:Server prior to 5.2 or Gentran:Mentor prior to 1.7. The structure of Trading Partner records changed in Gentran:Server 5.2/Mentor 1.7. The version 5.2 **tpadmin** runs only on Trading Partner records converted with **tp_cvrt** or created with Gentran:Server 5.2 or Gentran:Mentor 1.7.

Procedure:

Run **tp_cvrt** before you try to access the Trading Partner records.

Reference

See the *Gentran:Server for UNIX and Workstation Upgrade and Data Conversion Guide* for information about **tp_cvrt**.

Unable **Unable to access File: <file name> for writing**

Message Type: Error
Program Module: Visual Mapper

Explanation:

The Visual Mapper was unable to write the indicated file.

Procedure:

Use this procedure in response to this message:

Step	Action
1	Check the amount of available disk space left on the disk to which Gentran:Server is trying to write the file. Provide additional disk space if necessary.
2	Check the permissions of the file and the directory containing map files. Change the permissions as necessary.

(Continued on next page)

Unable **Unable to access source file: <file name>**

Message Type: **Error**
Program Module: **Main Window (Translate)**

Explanation:
Gentran:Server cannot access the source file selected for this translation.

Procedure:
Use this procedure in response to this message:

Step	Action	
1	Use File Manager to determine whether the file and directory exist, whether the file is stored in the directory specified, and whether the file is empty.	
2	Use this table to determine your next action.	
	IF the...	THEN...
	Directory does not exist	Create it.
	Directory exists but the file does not	Create the file and move it to the correct directory or specify another file as the source for this translation.
	File exists and is in the proper directory	1. Check the read permissions on the file and directory. 2. Change the permissions of the file or directory.

Unable **Unable to get a new AbcDisamFile instance**

Message Type: **Error**
Program Module: **Visual Mapper**

Explanation:
This message appears when there is an internal error in Gentran:Server.

Procedure:
Call Gentran:Server Customer Support. Give them the complete text of this message and tell them what version of Gentran:Server you are running.

(Continued on next page)

Unable **Unable to open/create automapping thesaurus files****Unable to open/create generic synonym files****Message Type:** Error**Program Module:** Thesaurus/Synonym Editor**Explanation:**

The Thesaurus/Synonym Editor was unable to find, open, or create the thesaurus file specified or generic synonym (*generic.dat/idx*) file.

Procedure:

Use this procedure in response to this message:

Step	Action	
1	View the Setup Directories dialog box and identify the directory in which you are storing Map Files. This directory also stores thesaurus and synonym files.	
2	Use the File Manager to determine whether the specified directory exists and whether it contains the file.	
3	Use this table to determine your next action.	
	IF the...	THEN...
	Map directory does not exist	Create it and move the file into it.
	Map directory exists, but the file does not	Check the write permissions on the directory and create the file.
	File exists and is in the correct directory	Check the read permissions on the file and directory, changing them if necessary.

(Continued on next page)

Unable **Unable to open file <file name>**

Message Type: Error
Program Module: Various

Explanation:
 Gentran:Server cannot open the file specified.

Procedure:
 Use this procedure in response to this message:

Step	Action	
1	View the Setup Directories dialog box and determine where the file should be stored.	
2	Use File Manager to determine whether the file exists and its location.	
3	Use this table to determine your next action.	
	IF the file...	THEN...
	Does not exist	Create or copy it.
	Exists, but the directory does not	Create the directory and move the file into it.
	And the directory exist, but the file is not in the correct directory	Move the file.
	Has the correct name and is in the correct directory	Check the permissions and change them if necessary.

(Continued on next page)

Unable Unable to open 'mentor.vrf'. Make sure this file is in the defined Screen Lib directory.

Message Type: Error

Program Module: Various

Explanation:

Gentran:Server is unable to open one of the files necessary to display some screens. This message usually displays only when opening Gentran:Server.

Procedure:

Use this procedure in response to this message:

Step	Action	
1	Use the File Manager to view the directory containing Gentran:Server screen files.	
2	Move the <i>mentor.vrf</i> file to that directory. Note If you are unable to find the file, reinstall Gentran:Server as an upgrade and load only programs.	
3	IF the file...	THEN...
	Does not exist	Create it.
	Exists, but the correct directory does not	Create the directory and move the file into it.
	And the directory exist, but the file is not in the correct directory	Move the file.
	Has the correct name and is in the correct directory	Check the permissions and change them if necessary.

(Continued on next page)

Unable **Unable to write file: <file name>**

Message Type: **Error**
Program Module: **Application Editor**

Explanation:
The Application Editor was unable to write the indicated file.

Procedure:
Use this procedure in response to this message:

Step	Action
1	Gentran:Server was trying to write the file. Provide more disk space if necessary.
2	Check the permissions of the file and the directory containing it. Change the permissions if necessary.

WARNING **WARNING: <expression> is of type <argument type>, this is not a valid argument type for the operation <operation>.**

Message Type: **Warning**
Program Module: **Compiler**

Explanation:
The argument entered is invalid for this operation. The compiler will accept an operation with invalid argument types, but may provide unexpected results.

Procedure:
Change the mapping instruction to include only arguments with correct data types.

Reference
See the chapter [Mapping](#) in the *Gentran:Server for UNIX and Workstation Mapping and Translation Guide* for information about valid arguments for this operation and valid data types for each argument.

(Continued on next page)

WARNING **WARNING: Incompatible type: <expression> is a <data type>, a <data type> is required.**

Message Type: Warning
Program Module: Compiler

Explanation:

Change the mapping instruction to use a valid data type for the specified item or expression in this context.

Reference

See the chapter [Mapping](#) in the *Gentran:Server for UNIX and Workstation Mapping and Translation Guide* for information about valid arguments for this operation and valid data types for each argument.

WARNING **WARNING: Mapping expression <mapping instruction> has not been corrected in the editor, it will not be compiled.**

Message Type: Warning
Program Module: Compiler

Explanation:

The compiler found an invalid mapping instruction. Gentran:Server will ignore the mapping instruction and excluding it from the compiled version of the map. Using this map in a translation may cause unexpected results.

Procedure:

Use this procedure in response to this message:

Step	Action
1	Look at the map and locate the mapping instruction identified in the message.
2	Correct or delete the mapping instruction and compile the map again.

(Continued on next page)

WARNING

WARNING: Mapping instruction <mapping instruction> results in data which does not match the data type <data type> of its destination element <destination element>.

Message Type: Warning

Program Module: Compiler

Explanation:

The source value you are mapping to this destination item has a different data type than the destination item. Only some data items (for example, AN and ID) are interchangeable. This may cause unexpected results when the map is used for translation. It is safer to map source values to destination items that have the same data type.

Procedure:

Use this procedure in response to this message:

Step	Action
1	Cancel this mapping instruction and close the Mapping Instructions window.
2	Click the destination side of the map.
3	Check the data type of the destination item specified and change it in the Application or Standard/IG Editor if necessary.
4	Save and close the application or implementation guide.
5	Create the mapping instruction again.

WARNING

WARNING: The number entered is too large.

Message Type: Error

Program Module: Compiler

Explanation:

The number entered exceeds the maximum value of this field.

Procedure:

Check online help and/or the documentation to find the maximum limit of this value and then enter another number into this field.

(Continued on next page)

**WARNINGS/
ERRORS**

WARNINGS/ERRORS occurred in the <location of error> while working on:
<mapping instruction>

WARNINGS/ERRORS occurred in the <location of error> while working on
<mapping instruction> in group <GROUP name> which contains elements
<element>:

Message Type: Warning and/or error

Program Module: Compiler

Explanation:

The compiler found one or more unspecified errors or conditions that could cause problems.

Procedure:

Use this procedure in response to this message:

Step	Action
1	Check the part of the map indicated.
2	Check the identified mapping instruction.
3	Make any corrections necessary and compile the map again.

Would

Would you like to save the changes made in <file name>?

Message Type: Prompt

Program Module: Application and Standard/IG Editors and Visual Mapper

Explanation:

Gentran:Server is prompting you to save the changes made in the currently open file.

Procedure:

Use one of these responses if you receive this message:

IF you want to...	THEN click...
Save the changes to this file during the current session	Yes.
Lose the changes made since you last saved	No.

(Continued on next page)

You You are about to delete the last mapping instruction from this group. Proceed?

Message Type: Warning
Program Module: Compiler

Explanation:
 If you delete the last mapping instruction from a mapping GROUP, Gentran:Server automatically deletes the GROUP when you exit the Mapping Instructions window.

Procedure:
 Use one of these responses if you receive this message:

IF you want to...	THEN click...
Retain the mapping instruction	Yes.
Delete the mapping instruction and the GROUP	No.

You You have already accessed all the mapping instructions for this group. Do you want to add a new one?

Message Type: Informational
Program Module: Compiler

Explanation:
 Gentran:Server prompts you to create a new mapping instruction in the following situations:

- ▶ You click the **Previous** button on the **Mapping Instructions** window while viewing the first mapping Instruction in a GROUP.
- ▶ You click the **Next** button on the **Mapping Instructions** window while viewing the last mapping instruction in a GROUP.

Procedure:
 Use one of these responses if you receive this message:

IF you...	THEN enter...
Want to add a new mapping instruction	Yes
Do <i>not</i> want to add a new mapping instruction	No

(Continued on next page)

You You must change to view all mode to <delete/discard/cut> the current item, change to view all mode now?

Message Type: Informational
Program Module: Standard/IG Editor

Explanation:

The last used item in an implementation guide can be deleted, discarded, or cut only when in View All mode. Currently, the editor is in View Only Used Items mode and, if the action were allowed, would display only a blank segments and elements box.

Procedure:

Use one of these responses if you receive this message:

IF you want to view...	THEN click...
All items (used and discarded) and delete the marked item	Yes.
Only used items but retain the marked item	No.

You You must save Untitled App before generating SQL. Save now?

Message Type: Prompt
Program Module: Application Editor

Explanation:

The **Database/Auto Create SQL File** option is available only when the currently displayed application has been saved. You must save a database application before you generate an SQL file.

Procedure:

Use one of these responses if you receive this message:

IF you want to...	THEN click...
Save the currently displayed database application before generating an SQL File	Yes.
Avoid saving the currently displayed application and cancel the generation of an SQL file	No.
Close the message window without taking any other action	Cancel.

Gentran:Server Return Codes

atext This table lists the return codes defined for the **atext** command.

Return Code	Definition
0	Success
1	Cannot use one file as input and output file
300 or 45*	Missing or invalid arguments Note Some systems support return codes only up to 255 before they cycle back to zero.
380 or 125*	Failed to open file Note Some systems support return codes only up to 255 before they cycle back to zero.

ediarc The system issues the default return code of zero (0) for error messages with numbers less than 200 if the -e parameter is not used.

This table lists the return codes for the **ediarc** command.

Return Code	Definition
0	Success
1	A required argument was not sent to arcset
2	Failed to open a file
4	Failed to write a file
5	Failed to archive a set

(Continued on next page)

edifmat

The following table lists the return codes defined for the **edifmat** command.

Return Code	Definition
0	<p>Success</p> <p>Note Return code 0 would also be returned if edifmat failed to run due to an invalid number of parameters (invocation screen) or if it could not find the file msgrecs.vda (necessary for VDA standard); See error message 180 for more information</p>
1	Interchange has no trailer; See error message 379 for more information
2	<p>Invalid data; See the following error messages for more information:</p> <ol style="list-style-type: none"> 1) 361 Invalid set count 2) 362 Invalid group count 3) 377 Interchange count errors 4) 377 Segment id too long 5) 378 Invalid characters in interchange 6) 387 Invalid segment id
3	<p>Header rejected; See the following error messages for more information:</p> <ol style="list-style-type: none"> 1) 100 Defined Terminator could not be found, or Separator and Terminator are the same character, or Separator, Sub-separator or Terminator is invalid 2) 200 Encountered segment too long to process
126	No EDI header information found in input file; no header count; See error message 126 for more information
380	Failed to open file; See error message 380 for more information
382	Failed to write file; See error message 382 for more information

(Continued on next page)

envelope This table lists the return codes defined for the **envelope** command.

Return Code	Definition
0	Success/No data to envelope
300 or 45*	Failed to open file
380 or 125*	Failed to read file Note Some systems support return codes only up to 255 before they cycle back to zero.
382 or 127*	Failed to write file Note Some systems support return codes only up to 255 before they cycle back to zero.

Iftran This table describes the Iftran return codes.

Return Code	Meaning	Symbol
1	Reached the end of the file unexpectedly	FILEEND
2	Error in invocation of translation	ARGERR
3	Unable to load translation table (compiled map/translation object)	TBLERR
4	Unable to open a file	OPNERR
5	Could not read, write, or update Trading Partnership record	TPERR
6	Application file is not formatted as expected. Could be corrupt.	APPFMTERR
7	Could not find Trading Partnership Code in the application file	APPTPERR
8	Ran out of memory	ALLOC_FAIL
(Continued on next page)		

(Contd) Return Code	Meaning	Symbol
9	Call to database failed	DBERR
10	The version of the translator does not match the product version	VERSION
12	Error occurred during compliance checking	CMPCHKERR
13	Failed to load the ID code file into memory	IDCODEERR
14	Error in application data	APPDATAERR
15	Error parsing NCPDP file	RECIDERR
16	Input file is not new-line terminated	NO_NEWLINE
17	Could not read, write, or update organization records	ORGERR
20	Incoming set sequence number not as expected	SEQUENCE_ERROR
25	Error parsing the XML file	XMLFILEERR
26	Translation error. See the dtlLog.err file for explanation.	COMMON_LIB_ERROR
50	Duplicate sets found	DUPLICATE_SET
80	Unable to determine the type of the input record	UNDEF_REC_TYPE

udfsort

The following table lists the return codes defined for the **udfsort** command.

Return Code	Definition
0	Success
-1	Missing or invalid arguments
	No data in input file

(Continued on next page)

(Contd) Return Code	Definition
	Failed to allocate memory
	Error writing file
-380 or -125*	Failed to open file Note Some systems support return codes only up to 255 before they cycle back to zero.

UNIX Error Codes

- 1 Not super-user
- 2 No such file or directory
- 3 No such process
- 4 Interrupted system call
- 5 I/O error
- 6 No such device or address
- 7 Arg list too long
- 8 Exec format error
- 9 Bad file number
- 10 No children
- 11 No more processes
- 12 Not enough core
- 13 Permission denied
- 14 Bad address
- 15 Block device required
- 16 Mount device busy
- 17 File exists
- 18 Cross-device link
- 19 No such device
- 20 Not a directory
- 21 Is a directory
- 22 Invalid argument
- 23 File table overflow
- 24 Too many open files
- 25 Not a typewriter
- 26 Text file busy
- 27 File too large
- 28 No space left on device
- 29 Illegal seek
- 30 Read only file system
- 31 Too many links
- 32 Broken pipe

(Continued on next page)

33	Math arg out of domain of func
34	Math result not representable
35	No message of desired type
36	Identifier removed
37	Channel number out of range
38	Level 2 not synchronized
39	Level 3 halted
40	Level 3 reset
41	Link number out of range
42	Protocol driver not attached
43	No CSI structure available
44	Level 2 halted
45	Deadlock condition
46	No record locks available
50	Invalid exchange
51	Invalid request descriptor
52	Exchange full
53	No anode
54	Invalid request code
55	Invalid slot
56	File locking deadlock error
57	Bad font file fmt
60	Device not a stream
61	No data (for no delay i/o)
62	Timer expired
63	Out of streams resources
64	Machine not on the network
65	Package not installed
66	The object is remote
67	The link has been severed
68	Advertise error
69	Srmount error
70	Communication error on send
71	Protocol error

(Continued on next page)

- 74 Multihop attempted
 - 76 Cross mount point (not really error)
 - 77 Trying to read unreadable message
 - 78 Path or path component exceeds limit
 - 80 Given .log name not unique
 - 81 f.d. invalid for this operation
 - 82 Remote address changed
 - 83 Can't access a needed shared lib.
 - 84 Accessing a corrupted shared lib.
 - 85 .lib section in a.out corrupted
 - 86 Attempting to link in too many libs.
 - 87 Attempting to exec a shared library
 - 135 Structure needs cleaning
 - 137 Not a name file
 - 138 Not available
 - 139 Is a name file
 - 140 Remote I/O error
 - 141 Reserved for future
 - 142 Error 142
-

DISAM Error Codes

UNIX System errors usually are 1 through 99. See your UNIX system documentation for additional information about these errors.

#define EDUPL	100	/*duplicate record*/
#define ENOTOPEN	101	/*file not open*/
#define EBADARG	102	/*invalid argument*/
#define EBADKEY	103	/*invalid key description*/
#define ETOOMANY	104	/*out of file descriptors*/
#define EBADFILE	105	/*invalid isam file format*/
#define ENOTEXCL	106	/*exclusive lock required*/
#define ELOCKED	107	/*record claimed by another*/
#define EKEXISTS	108	/*key already exists*/
#define EPRIMKEY	109	/*primary key may not be used*/
#define EENDFILE	110	/*beginning or end of the file reached*/
#define ENOREC	111	/*no match was found*/
#define ENOCURR	112	/*there is no "current" established*/
#define EFLOCKED	113	/*entire file locked by another*/
#define EFNAME	114	/*file name too long*/
#define ENOLOK	115	/*cannot create lock file*/
#define EBADMEM	116	/*memory allocation request failed*/
#define EBADCOLL	117	/*bad custom collating*/
#define EUSER	129	/*too many users*/
#define EVIRTUAL	140	/*unable to reopen virtual file */

Moving Files Overview

Contents**Overview**

- ▶ Introduction 2
 - ▶ The Source-to-Destination Process 3
-

Overview

Introduction

In this chapter

This chapter contains an overview of the process of moving files from a source environment to a destination environment. To move files successfully, follow the recommended approach described in this chapter.

Key terms

This table lists the key terms used in this chapter.

Term	Description
destination environment	The area to which you are moving files. Example Your production environment, where Gentran:Server processes your live data, is the destination when moving files from your test area.
load	The process of converting a <i>.unl</i> file (ASCII file) back to an ISAM file format with a utility designed for this purpose.
source environment	The area in your computer from which you are moving files. Example Your test environment, where you test software upgrades, run data conversion programs, or test new maps, Trading Partnership records, and other Gentran:Server components, is the source when moving files to your production environment.
unload	The process of converting an ISAM file to an ASCII file with a utility designed for this purpose.

The Source-to-Destination Process

Introduction

This section provides critical information about difficulties you may encounter when moving files and suggests procedures for avoiding those difficulties. This section also provides a diagram and procedure that describe the process of moving files from a source environment to a destination environment.

When and why to move files

You may find it necessary to move files from one environment to another in the following situations:

- ▶ Map files created in a test environment are ready for use in production.
- ▶ You want to use the map files from one installation in another.
- ▶ You are upgrading to a new Standards version.

Difficulties with moving entire directory tree

WARNING

You may encounter serious difficulties if you attempt to copy the entire source area directory tree (executable and data files) to the destination area.

When you copy an entire directory tree to a new location, the copying process breaks links among linked files. If you have the Gentran:Server for UNIX with EC Workbench product (or higher), the translation data manager's run directory is at risk. If the links in that directory are broken, the translation data manager is unable to start.

Recommended approach

You should build your destination area first and then move data files from the source area, rather than attempting to copy the entire source area to the destination area.

Move all data files at once

If you are moving data files to another machine, you can unload all the data files you need to move onto media, such as a tape, and then load them to the new machine from media. You do not have to move each data file separately.

Caution

You must use the procedures described in this guide to unload and load each type of data file. Using other methods to load or unload files could corrupt your data.

(Continued on next page)

Moving ISAM files

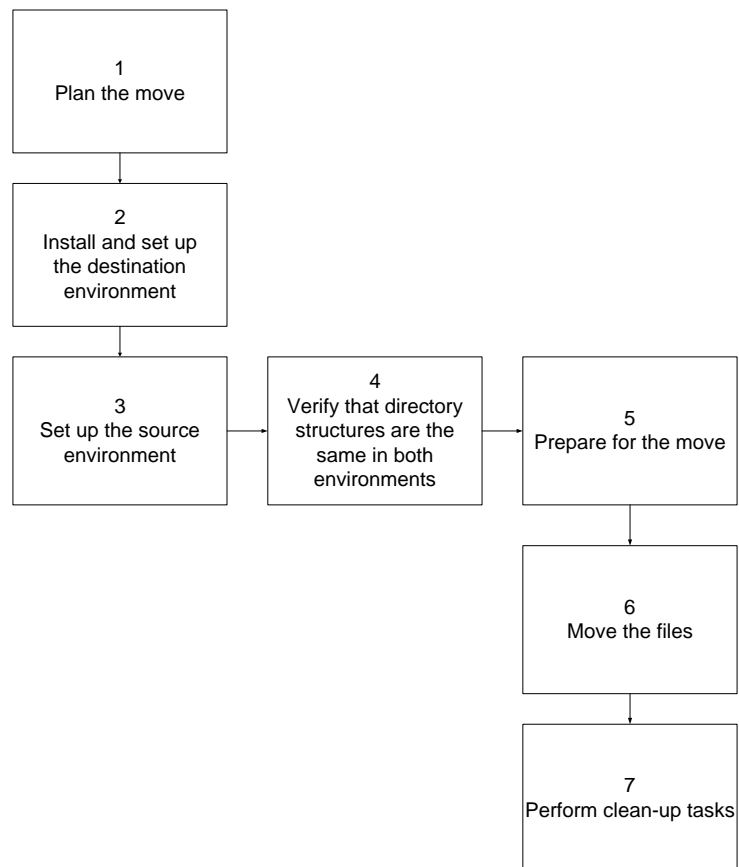
Files in Indexed Sequential Access Method (ISAM) format require special handling. Gentran:Server provides special utilities to move these files.

Reference

See the section [Moving ISAM files](#) in this guide for more information about this process.

Process flow diagram

This illustration shows the process flow for moving files from a source environment to a destination environment.



(Continued on next page)

Source-to-destination task summary

This table describes the stages in the source-to-destination process.

Stage	Description
1	<p>Plan the move.</p> <p>Reference See the chapter Planning the Move in this guide.</p>
2	<p>Install and set up the destination environment.</p> <p>Reference See the <i>Gentran:Server for UNIX Getting Started Guide</i> and <i>Installation Checklists</i> for more information about the process of installing and setting up an environment.</p>
3	<p>Prepare the source environment.</p> <p>Reference See the topic Preparing the Source Environment in the chapter <i>Preparing to Move Files</i> for more information about this process.</p>
4	<p>Verify that the directory structures of the source and destination environments are the same.</p> <p>Warning Differences between your source and destination directory structures can affect Gentran:Server's ability to find the files it needs to process data.</p> <p>Reference See the the chapter Planning the Move for more information about this process.</p>
5	<p>Prepare for the move.</p> <p>Reference See the chapter Planning the Move in this guide.</p>
6	<p>Move the files.</p> <p>Reference See the chapter Moving Files in this guide.</p>
7	<p>Perform clean-up tasks.</p> <p>Reference See the chapter Cleaning Up After the Move in this guide.</p>

Planning the Move

Contents

Overview

- ▶ Introduction 2
- ▶ The Planning Process 3

Describing the Source and Destination Environments

- ▶ Overview 5

Choosing a File Transfer Method

- ▶ Transfer Types, Methods, and File Types 7
 - ▶ How to Choose a File Transfer Method 12
 - ▶ How to Identify the Files to Move 13
 - ▶ File Checklist 15
 - ▶ How to Select a Time to Move Files 19
-

Overview

Introduction

In this chapter This chapter explains how to plan the movement of files from a source to a destination environments.

Key terms This table lists the key terms used in this chapter.

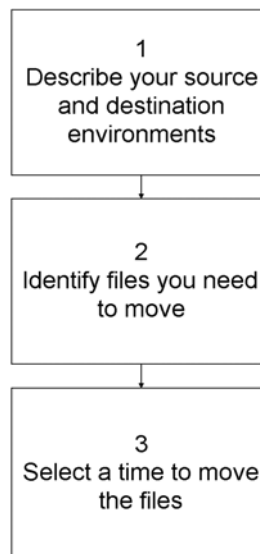
Term	Description
destination environment	The area on a computer to which you are moving the files.
source environment	The area on a computer from which you are moving your files.
unload	The process of converting an ISAM file to an ASCII file with a utility designed for this purpose.

The Planning Process

Introduction Planning before you move files from a source environment to a destination environment helps ensure that you:

- Move all necessary files
- Avoid file permission problems
- Do not mistakenly overwrite files
- Avoid processing conflicts.

Process diagram This illustration shows the tasks in the planning process.



(Continued on next page)

Task summary

This table describes the tasks in the planning process.

Task	Description
1	Describe your source and destination environments. Reference See Describing the Source and Destination Environments in this chapter.
2	Identify the files you need to move. Reference See the section How to Identify the Files to Move in this chapter.
3	Select a time to move the files. Reference See the section How to Select a Time to Move Files in this chapter.

Describing the Source and Destination Environments

Overview

Introduction This section provides the basic process for describing the source and destination environments involved in the file movement process.

Importance The structure of your source and destination environments determines the steps you perform to move files from a source to a destination.

Questions to answer Answer this list of questions to describe your source and destination environments.

- ▶ Have you created both your source area and your destination area for Gentran:Server?
- ▶ How is your Gentran:Server system structured?
In other words, do you have one source environment and one destination environment? Or, do you have a source area and destination area, each of which has two or more environments?
- ▶ Is the destination environment on the same machine as the source environment, or is it on a different machine?
- ▶ Is the directory structure of the destination environment an exact duplicate of the source environment?

If not, what are the differences?

(Continued on next page)

Environment examples

These examples represent four types of environments. Your environment may reflect all or some of the characteristics found in each of these examples

Example: PC to PC

Your source data is on one PC and your destination data is on another PC. The directory names are identical on both machines. The PCs are not linked for file transfers.

Example: PC to UNIX

You develop and test your maps on a PC and then transfer them to a UNIX host. On the UNIX host, you have a destination area with two environments: one for purchase orders (POPROD) and the other for invoices (INVPROD).

Note

This example applies only to clients who use Gentran:Server Workstation and one additional Gentran:Server product.

Choosing a File Transfer Method

Transfer Types, Methods, and File Types

Basis for method of moving file

The way in which you move a file depends on the following:

- ▶ Type of transfer
- ▶ Type of file
- ▶ Transfer method.

Types of transfers

These are the types of file transfers:

- ▶ PC to linked UNIX host
- ▶ PC to unlinked UNIX host
- ▶ PC to linked PC
- ▶ PC to unlinked PC

Types of files

These are the types of moveable files:

- ▶ ASCII
 - ▶ Converted indexed
 - ▶ Binary
-

(Continued on next page)

**Gentran:Server
file types**

This table indicates the file types of the main Gentran:Server files.

File Type	File Name	ASCII	Indexed	Binary
Uncompiled Application Integration map (binary)	<i><mapname>.map</i>			X
Compiled Application Integration map	<i><mapname>.tpl</i>			X
File definition (Application Integration)	<i><filename>.ddf</i>	X		
Trading Partnership record	<i>tp.dat</i> and <i>tp.idx</i> <i>tpmisc.dat</i> and <i>tpmisc.idx</i>		X	
Tradacom supplementary record	<i>tradacom.dat</i> and <i>tradacom.idx</i>		X	
Organization record	<i>org.dat</i> and <i>org.idx</i>		X	
Contact record	<i>contact.dat</i> and <i>contact.idx</i>		X	
Category records	<i>cattype.dat</i>	X		
	<i>catvalue.dat</i> and <i>catvalue.idx</i>		X	
Reconciliation ID records	<i>tprecon.dat</i> and <i>tprecon.idx</i>		X	
EDI document specifier mapping files	<i>ds_map.dat</i> and <i>ds_map.idx</i> <i>ds_name.dat</i> and <i>ds_name.idx</i> <i>ds_tptbl.dat</i> and <i>ds_tptbl.idx</i>		X	
(Continued on next page)				

(Contd) File Type	File Name	ASCII	Indexed	Binary
APP document specifier mapping files	<i>ds_map_app.dat</i> and <i>ds_map_app.idx</i> <i>ds_name.dat</i> and <i>ds_name.idx</i> <i>ds_tptbl_app.dat</i> and <i>ds_tptbl_app.idx</i>		X	
Agent configuration records	<i>dm.dat</i> and <i>dm.idx</i>		X	
Data managers	<i>.dmcfg.dat</i> and <i>.dmcfg.idx</i>		X	
Translation script	<filename>.<ext>	X		
Pattern files	<i>pat.dat</i> and <i>pat.idx</i> <i>patlst.dat</i> and <i>patlst.idx</i>		X	
Post processing script	<filename>.<ext>	X		
Communication script	<filename>.<ext>	X		
Standards Cross Reference	<i>xtable.dat</i> and <i>xtable.idx</i>		X	
Application TP Rules	<i>apptptbl.dat</i> and <i>apptptbl.idx</i>		X	
Application TP Cross Reference	<i>appxref.dat</i> and <i>appxref.idx</i>		X	

(Continued on next page)

**Visual Mapper
file types**

This table indicates the file types of other Gentran:Server files you may have if you use the Visual Mapper.

Note

This information is for prior customers who use the Visual Mapper.

File Type	File Name	ASCII	Indexed	Binary
Uncompiled Visual Mapper map	<i><mapname>.vmp</i>	X		
Compiled Visual Mapper map	<i><mapname>.tbl</i>			X
Specific synonym list	<i><listname>.dat</i> <i><listname>.idx</i>		X	
Generic synonym list	<i>generic.dat</i> and <i>generic.idx</i>		X	
Thesaurus list	<i>thesaurus.dat</i> and <i>thesaurus.idx</i>		X	
Implementation guide	<i><mapname>.ig</i>	X		
Application description	<i><mapname>.app</i>	X		

**XML translation
option file types**

This table indicates the file types of selected Gentran:Server files you may have if you have the XML translation option with your Gentran:Server product.

File Type	File Name	ASCII	Indexed	Binary
First Level Element	<i>xmlspl1.dat</i> and <i>xmlspl1.idx</i>		X	
Second Level Element	<i>xmlspl2.dat</i> and <i>xmlspl2.idx</i>		X	
Third Level Element	<i>xmlspl3.dat</i> and <i>xmlspl3.idx</i>		X	
Trading Partnership Rules	<i>xmltbtpl.dat</i> and <i>xmltbtpl.idx</i>		X	
(Continued on next page)				

(Contd) File Type	File Name	ASCII	Indexed	Binary
Trading Partnership Cross Reference	<i>xmlxref.dat</i> and <i>xmlxref.idx</i>		X	
XML document specifier mapping files	<i>ds_map_xml.dat</i> and <i>ds_map_xml.idx</i> <i>ds_name.dat</i> and <i>ds_name.idx</i> <i>ds_tptbl_xml.dat</i> and <i>ds_tptbl_xml.idx</i>		X	

Transfer methods

You can transfer files using:

- ▶ Copy commands, such as **cp**, **cpio**, and **copy**
- ▶ FTP operations for ASCII and Binary files (asc/bi protocols respectively)

Conversion utilities

Before you move Indexed Sequential Access Method (ISAM) database files from one machine to another, you must convert the file into an ASCII file. The resulting file has a *.unl* extension. After you move the file, you must convert it back to an indexed file.

To convert an ISAM file into an ASCII file, you use a Gentran:Server **unload utility**.

To convert an ASCII file into an ISAM file, you use a Gentran:Server **load utility**.



How to Choose a File Transfer Method

Introduction The method you use to transfer a file depends on the type of transfer and the type of file.

Decision table Use this table to choose a file transfer method.

IF the type of transfer is...	AND the file type is...	THEN...
One environment to another on same host or PC	ASCII or binary	Use the copy file command.
	Indexed (ISAM)	Use the copy file command.
PC or UNIX host to connected UNIX host (running same operating system)	ASCII	Use the FTP command for ASCII files.
	Binary	Use the FTP command for binary files.
	Indexed (ISAM)	1.Unload the file. 2.FTP (ASCII) the file to the destination. 3.Load the file at the destination.
PC or UNIX host to unconnected UNIX host	ASCII or binary	1.Copy the file to tape or other media. 2.Copy the file to the new host.
	Indexed (ISAM)	1.Unload the file. 2.Copy the file to tape or other media. 3.Copy the file to the new host 4.Load the file at the destination.

How to Identify the Files to Move

Introduction

When you create and test a file, such as a map or a new Trading Partnership, you often create a number of related files. When you move the new file to your destination area, you must also identify and move the related files that affect processing.

Decision table for new maps

Use this table to decide which map-related files you need to move in addition to moving the new map.

IF the map is for...	THEN move the...
Outbound processing	Data definition (.ddf) file used for the compiled Application Integration map (.TPL) file. Application description (.app) file used for the compiled Visual Mapper mapping table (.TBL) file.
A Visual Mapper map that is linked to a synonym list	Generic or specific synonym list: <ul style="list-style-type: none"> ▶ generic.dat and generic.idx ▶ <mapname>.dat and <mapname>.idx
A new Trading Partnership	Trading Partnership records: <ul style="list-style-type: none"> ▶ tp.dat and tp.idx ▶ tpmisc.dat and tpmisc.idx ▶ org.dat and org.idx ▶ xtable.dat and xtable.idx
An application that uses the Trading Partnership Rule Definition feature	<ul style="list-style-type: none"> ▶ apptptbl.dat and apptptbl.idx ▶ appxref.dat and appxref.idx
XML processing Note Available only if you have the XML translation option.	<ul style="list-style-type: none"> ▶ xmlspl1.dat and xmlspl1.idx ▶ xmlspl2.dat and xmlspl2.idx ▶ xmlspl3.dat and xmlspl3.idx ▶ xmltbtpl.dat and xmltbtpl.idx ▶ xmlxref.dat and xmlxref.idx

(Continued on next page)

Decision table for Trading Partnerships

Use this table to decide which Trading Partnership and Trading Partnership-related files you need to move to the destination area.

IF the Trading Partnership...	THEN move the...
Is new	Trading Partnership records: <ul style="list-style-type: none"> ▶ <i>tp.dat</i> and <i>tp.idx</i> ▶ <i>tpmisc.dat</i> and <i>tpmisc.idx</i> ▶ <i>org.dat</i> and <i>org.idx</i>
Is part of a new category	Category files: <ul style="list-style-type: none"> ▶ <i>cattype.dat</i> ▶ <i>catvalue.dat</i> and <i>catvalue.idx</i>
Has a new contact list record	Contact files: <i>contact.dat</i> and <i>contact.idx</i>
Is new and uses reconciliation IDs for inbound acknowledgments	Trading Partnership reconciliation ID files: <ul style="list-style-type: none"> ▶ <i>tprecon.dat</i> and <i>tprecon.idx</i>
Code is used in a cross reference table	Appropriate table: <ul style="list-style-type: none"> ▶ <i>xtable.dat</i> and <i>xtable.idx</i> ▶ <i>appxref.dat</i> and <i>appxref.idx</i> ▶ <i>xmlxref.dat</i> and <i>xmlxref.idx</i>.
Is for an XML trading partner Note Available only if you have the XML translation option.	XML-related files: <ul style="list-style-type: none"> ▶ <i>xmlsp1.dat</i> and <i>xmlsp1.idx</i> ▶ <i>xmlsp2.dat</i> and <i>xmlsp2.idx</i> ▶ <i>xmlsp3.dat</i> and <i>xmlsp1.idx</i> ▶ <i>xmltptbl.dat</i> and <i>xmltptbl.idx</i> ▶ <i>xmlxref.dat</i> and <i>xmlxref.idx</i>

Note

If you have DOS batch files used in your Gentran:Server installation, you may need to move them as well.

File Checklist

When to use Use the checklist in this topic when you need a quick reference to remind you of the files you need to include in a source-to-destination move.

We suggest that you make a copy of the list so that you can use it each time you move files.

Checklist Use this list to check off and record the names of the files you need to move.

	File Type	File Name
	Application Integration Map	_____. <i>map</i> _____. <i>TPL</i>
	Visual Mapper Map	_____. <i>vmp</i> _____. <i>TBL</i>
	Data definition file	_____. <i>ddf</i>
	Application Description	_____. <i>app</i>
	Implementation Guide	_____. <i>ig</i>
	Specific synonym list	<i><mapname>.dat</i> and <i><mapname>.idx</i>
	Generic synonym list	<i>generic.dat</i> and <i>generic.idx</i>
	Thesaurus list	<i>thesaurus.dat</i> and <i>thesaurus.idx</i>
	Trading Partnership records	<i>tp.dat</i> and <i>tp.idx</i> <i>tpmisc.dat</i> and <i>tpmisc.idx</i>
	TRADACOMS supplementary Trading Partnership records	<i>tradacom.dat</i> and <i>tradacom.idx</i>
	Category records	<i>cattype.dat</i> <i>catvalue.dat</i> and <i>catvalue.idx</i>
	Reconciliation ID records	<i>tprecon.dat</i> and <i>tprecon.idx</i>

(Continued on next page)

	(Contd) File Type	File Name
	Trading Partnership Contact records	<i>contact.dat</i> and <i>contact.idx</i>
	Trading Partnership Organization records	<i>org.dat</i> and <i>org.idx</i>
	EDI document specifier mapping files	<i>ds_map.dat</i> and <i>ds_map.idx</i> <i>ds_name.dat</i> and <i>ds_name.idx</i> <i>ds_tptbl.dat</i> and <i>ds_tptbl.idx</i>
	APP document specifier mapping files	<i>ds_map_app.dat</i> and <i>ds_map_app.idx</i> <i>ds_name.dat</i> and <i>ds_name.idx</i> <i>ds_tptbl_app.dat</i> and <i>ds_tptbl_app.idx</i>
	Agent configuration records	<i>dm.dat</i> and <i>dm.idx</i>
	Data managers	<i>.dmcfg.dat</i> and <i>.dmcfg.idx</i> Note In most cases, you modify this file in the destination environment rather than unloading the file.
	Translation script	_____ <i>xltr.scr</i>
	Patterns	<i>pat.dat</i> and <i>pat.idx</i> <i>patlst.dat</i> and <i>patlst.idx</i> .
	Post processing script	_____ <i>.scr</i>
	Communication script	_____ <i>.scr</i>
	Custom shell scripts	_____ <i>.sh</i>
	DOS batch files	_____ <i>.bat</i>
	LOCKS files	LOCKS/_____
	Standards cross reference files	<i>xtable.dat</i> and <i>xtable.idx</i> (Continued on next page)

	(Contd) File Type	File Name
	Trading Partnership Contact records	<i>contact.dat</i> and <i>contact.idx</i>
	Trading Partnership Organization records	<i>org.dat</i> and <i>org.idx</i>
	EDI document specifier mapping files	<i>ds_map.dat</i> and <i>ds_map.idx</i> <i>ds_name.dat</i> and <i>ds_name.idx</i> <i>ds_tptbl.dat</i> and <i>ds_tptbl.idx</i>
	APP document specifier mapping files	<i>ds_map_app.dat</i> and <i>ds_map_app.idx</i> <i>ds_name.dat</i> and <i>ds_name.idx</i> <i>ds_tptbl_app.dat</i> and <i>ds_tptbl_app.idx</i>
	Agent configuration records	<i>dm.dat</i> and <i>dm.idx</i>
	Data managers	<i>.dmcfg.dat</i> and <i>.dmcfg.idx</i> Note In most cases, you modify this file in the destination environment rather than unloading the file.
	Translation script	_____ <i>xltr.scr</i>
	Patterns	<i>pat.dat</i> and <i>pat.idx</i> <i>patlst.dat</i> and <i>patlst.idx</i> .
	Post processing script	_____ <i>.scr</i>
	Communication script	_____ <i>.scr</i>
	Custom shell scripts	_____ <i>.sh</i>
	DOS batch files	_____ <i>.bat</i>
	LOCKS files	LOCKS/_____
	Standards cross reference files	<i>xtable.dat</i> and <i>xtable.idx</i> (Continued on next page)

	(Contd) File Type	File Name
	Application TP rules files	<i>apptptbl.dat</i> and <i>apptptbl.idx</i>
	Application TP Cross Reference	<i>appxref.dat</i> and <i>appxref.idx</i>

If you have the XML translation option, you may need to move these files.

	File Type	File Name
	First level Elements	<i>xmlspl1.dat</i> and <i>xmlspl1.idx</i>
	Second level Elements	<i>xmlspl2.dat</i> and <i>xmlspl2.idx</i>
	Third level Elements	<i>xmlspl3.dat</i> and <i>xmlspl3.idx</i>
	Trading Partnership rules	<i>xmltbtpl.dat</i> and <i>xmltbtpl.idx</i>
	Trading Partnership cross reference	<i>xmlxref.dat</i> and <i>xmlxref.idx</i>
	XML document specifier mapping files	<i>ds_map_xml.dat</i> and <i>ds_map_xml.idx</i> <i>ds_name.dat</i> and <i>ds_name.idx</i> <i>ds_tptbl_xml.dat</i> and <i>ds_tptbl_xml.idx</i>

How to Select a Time to Move Files

Introduction

When you move files from source to destination, you stop Gentran:Server processing. For Gentran:Server for UNIX product levels, you also stop client access to the host. For this reason, you should move files when halting processing is least likely to cause problems for your organization and for your users.

Questions to answer

Answer these questions to find the best time for moving files.

- ▶ What day of the week or month, if any, does your organization not run Gentran:Server?
 - ▶ What time of day is processing least likely?
 - ▶ Which Gentran:Server processes are scheduled and when are they run?
 - ▶ How long do you think it will take to move the files to the destination environment?
 - ▶ When are other users least likely to require access to Gentran:Server?
-

Preparing to Move Files

Contents	Overview	
	▶ Introduction	2
	Preparing the Destination Environment	
	▶ Overview	4
	▶ How to Create Empty ISAM Files	5
	Preparing the Source Environment	
	▶ Overview	6
▶ The Workstation Preparation Process	7	

Overview

Introduction

In this chapter

This chapter describes the tasks and procedures you must complete before moving files from the source environment to the destination environment.

Key terms

This table lists the key terms used in this chapter.

Term	Description
absolute path name	The full address or path to a file starting at root or /.
ASCII	A text based code for representing alphanumeric information in a computer.
environment variable	A variable that assigns default values within a specific environment. Sometimes called keyword variables or user-defined variables.
FTP command	A command used to transfer files between machines that have a direct connection.
host	The server in a client/server network that performs the system security, data storage, and major computing tasks.
ISAM	Indexed sequential access method. A two-part file organization in which records are stored in one file, while another file contains an index that shows the location of each record.
isops	A Gentran:Server utility used to unload and load selected ISAM files.
load	The process of converting a .unl file (ASCII file) back to an ISAM file format with a utility designed for this purpose.
destination environment	The area in your computer that runs Gentran:Server to process live data.

(Continued on next page)

(Contd) Term	Description
source environment	The area in your computer that you use to: <ul style="list-style-type: none">▶ Test software upgrades,▶ Run data conversion programs, or▶ Test new maps, Trading Partnership records, and other Gentran:Server components.
.unl	The file extension for an ISAM file that has been converted to an ASCII file by a Gentran:Server unload utility.
unload	The process of converting an ISAM file to an ASCII file with a utility designed for this purpose.
unload/load utility	A Gentran:Server utility program that converts an ISAM file to an ASCII file and reconverts it after you have moved it to another machine.
user login	A UNIX ID with associated password and permissions.
user master file	The file that contains the Gentran:Server security system's user records.

Preparing the Destination Environment

Overview

Introduction

Indexed Sequential Access Method (ISAM) files must exist on the destination environment before you move files from the source environment. You must create empty files on the destination environment if none currently exist.

You should perform these tasks before you prepare your source environment in order to reduce the amount of time your system is unavailable to other users.

In this section

This section provides the procedure for creating empty ISAM and pattern files on the destination environment.

How to Create Empty ISAM Files

Introduction The load utility overwrites existing ISAM files; it does not create new files. Therefore, you must create empty ISAM and files on the destination environment before moving files from your source environment.

When to use Use this procedure to create an empty ISAM file when the destination machine does not have the ISAM files that you want to move.

Procedure Use this **isops** command to create an empty ISAM file.

```
isops -l -f <isams_prefix> </dev/null
```

where *<isams_prefix>* is the name of the ISAM file.

Example

Use this command to create an empty pattern file.

```
isops -l -f pat </dev/null
```

Note

You also can run **isops** from the Run Program option on the Tools menu.

Reference

See the [Command Reference](#) in the *Gentran:Server for UNIX and Workstation Technical Reference Guide* for more information about running the **isops** program.

Preparing the Source Environment

Overview

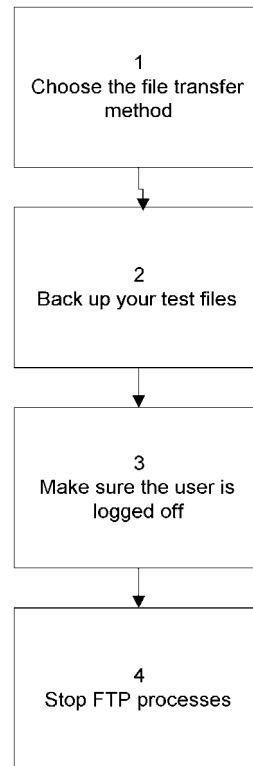
Introduction The process of moving files from one environment to another requires that the source environment be unavailable to all other users and clients. There are a number of steps you must take to ensure that no files or data are lost or damaged.

In this section This section provides the procedures and information you need to safely move files from your source environment. You must follow these procedures in order to prevent unnecessary work and to minimize the amount of time that the system is unavailable to other users.

Before you begin Before you begin preparing for the movement of files from one environment to another, you must complete the planning process explained in the chapter [Planning the Move](#) of this guide. If you have completed the planning process, you are ready to begin preparing your destination and source environments for the movement of files.

The Workstation Preparation Process

Process diagram This illustration shows the preparation process for the Workstation product.



(Continued on next page)

**Tasks in the
preparation
process**

This table describes the tasks in the preparation process.

Task	Description
1	Choose the file transfer method. Reference See the section Choosing a File Transfer Method in the Planning the Move chapter for instructions.
2	Back up your source files. Reference See your operating system documentation for instructions.
3	Set up and install Gentran:Server in the destination environment. Reference See your operating system documentation for instructions.
4	Stop FTP processes within the destination environment. Reference See your operating system documentation for instructions.

Moving Files

Contents	▶ Introduction	2
	Moving ASCII and Binary Files	
	▶ Overview	4
	▶ How to Move a Single ASCII or Binary File	6
	▶ How to Move Several ASCII or Binary Files	7
	Moving ISAM Files	
	▶ Overview	8
	▶ How to Unload an ISAM File	14
	▶ How to Load an ISAM File	15
	▶ How to Move ISAM Files to Another Machine	17
	Moving Trading Partnership Records and Related Files	
	▶ Overview	19
	▶ How to Move All Trading Partnership Records	22
	▶ How to Move Selected Trading Partnership Records	24
	▶ How to Move TRADACOMS Supplementary TP Records	27
	▶ How to Move Organization Records	29
	▶ Moving Contact Records	30
	▶ How to Move Standard Cross Reference Records	31
	Moving Maps and Map-related Files	
	▶ Overview	32
	▶ How to Move Application Integration Maps	33
	▶ How to Move Visual Mapper Maps	34
	▶ How to Move the Generic Synonym List	35
	▶ How to Move Specific Synonym Lists	37
	▶ How to Move a Thesaurus List	39
	▶ Moving Other Process Files	41
	▶ Process File Checklist	41
	▶ How to Move DOS Batch Files	43

Introduction

In this chapter This chapter contains general instructions for how to move these types of files:

- ▶ ASCII files
- ▶ Binary files
- ▶ ISAM files

The chapter also contains specific instructions for moving:

- ▶ Trading Partnership records
- ▶ Trading Partnership-related files
- ▶ Maps and related files
- ▶ LOCKS files
- ▶ Custom shell scripts.

Key terms This table lists the key terms used in this chapter.

Term	Description
ASCII	A text-based code for representing alphanumeric information in a computer.
FTP	File Transfer Protocol. Protocol used to transfer files between computers.
ISAM	Indexed sequential access method--a two-part file organization in which records are stored sequentially in one part of the file, while another part of the file contains an index that shows the location of each record.
isops	A Gentran:Server utility used to unload and load ISAM files.
load	The process of converting a <i>.unl</i> file (ASCII file) back to an ISAM file format with a utility designed for this purpose.
protocol	A standard set of rules, instructions, or formats for organizing data so it can be transferred between computer systems.

(Continued on next page)

(Contd) Term	Description
.unl	The file extension for an ISAM file that has been converted to an ASCII file by the Gentran:Server unload utility.
unload	The process of converting an ISAM file to an ASCII file with a utility designed for this purpose.
unload/load utility	A Gentran:Server utility program that enables you to convert an ISAM file to an ASCII file and reconvert it after you have moved it to another machine.

Moving ASCII and Binary Files

Overview

What is an ASCII file?

ASCII is a national standard for encoding American computer data. It has a standard 7-bit code with a parity code used for the interchange of data between software and hardware.

An **ASCII file** is a data file that contains words, program sources, shell scripts, or other text that conforms to the ASCII standard. Most UNIX systems use ASCII text for recording character data.

What is an ASCII file?

A file containing a string of bits, initially utilized to define a file that contains codes not part of the ASCII set.

File extensions

Gentran:Server files with the following extensions are ASCII files.

- ▶ .unl
- ▶ .vmp
- ▶ .ddf
- ▶ .app
- ▶ .ig
- ▶ .scr
- ▶ .bat

Gentran:Server files with the following extensions are binary files.

- ▶ .map
 - ▶ .tpl
 - ▶ .TBL
-

(Continued on next page)

**Moving ASCII
and binary files**

You move ASCII and binary files with copy commands and file transfer commands. The command you use depends on whether you are moving a file to another location on the same machine, to media, or to a linked machine.

How to Move a Single ASCII or Binary File

Introduction The command you use to move a single ASCII or binary file depends on whether you are moving a file to another location on the same machine or to a different machine.

Same PC In Windows Explorer or My Computer, click the file or folder you want to move.

Use your Windows[®] operating system's copy and paste options (**Edit** menu) or drag and drop functions to move the file into the destination folder.

Reference

See your Windows documentation for complete instructions on moving files.

PC to PC To move a file, you can use:

- ▶ Windows Explorer
- ▶ My Computer
- ▶ FTP software

Example

To move a file to an unlinked PC machine, in Windows Explorer or My Computer, select the file or folder you want to move. Use your Windows[®] operating system's copy and paste options (**Edit** menu) or drag and drop functions to move the files to media, such as a diskette. Then, copy the file from the media to the destination PC.

Note

If you use a tape as your transfer medium, use the tape software to transfer the file to and from the tape.

Reference

See your Windows documentation for complete instructions.

How to Move Several ASCII or Binary Files

Introduction You can move several ASCII or binary files at once. To do so, create a list of the files you want to move. You then issue a copy command, using the list name in place of the file name. This prompts the system to move all the files on the list.

Comment

To move an ISAM file, you must first use an unload utility to change it into an ASCII file.

PC to PC In Windows Explorer or My Computer, hold down the CTRL key, and then click the items you want to move.

Use your Windows® operating system's copy and paste options (**Edit** menu) or drag and drop functions to move the files to media, such as diskettes.

Note

If you use a tape as your transfer medium, use the tape software to transfer the files to and from the tape.

Moving ISAM Files

Overview

ISAM file extensions

Indexed Sequential Access Method (ISAM) files have a special type of file organization. You can recognize ISAM files by their *.dat* and *.idx* file name extensions.

File structure

In ISAM files, records are stored in one part of the file. Another part of the file contains an index that shows the location of each record for access purposes.

Unload and load utilities

You must change ISAM files to ASCII before moving them to another machine. Simple copy and FTP commands are unable to correctly handle ISAM files.

Gentran:Server provides utilities that change ISAM files to ASCII files (**unload**) and change ASCII files back to ISAM files (**load**).

Example

The utility used to unload and load Trading Partnership files is **tpmv**.

Reference

For a complete list of the unload/load utilities, see the chapter [Command Reference](#) in the *Gentran:Server for UNIX and Workstation Technical Reference Guide*.

(Continued on next page)

Specific unload and load utilities

The ISAM files below have unload and load utilities designed especially for them. The utilities are available from either the command line or a menu of the subsystem editor (for example, from the Tools menu in Trading Partnership Administration).

- ▶ Trading Partnership records
- ▶ Supplementary TRADACOMS Trading Partnership records
- ▶ Generic synonym lists
- ▶ Specific synonym lists
- ▶ Thesaurus lists
- ▶ Contact records
- ▶ Organization records
- ▶ Category records
- ▶ Archive data records.
- ▶ Trading Partnership cross-reference records
- ▶ XML Configuration records (if you have the XML translation option)

isops utility

The Gentran:Server **isops** utility is a generic unload and load utility that you can use to unload or load any ISAM file, including those for which specially designed utilities exist.

You can run isops from the command line or from the Run Programs command under the Main window Tools menu.

This table lists the file names defined for the **isops** command and the product levels to which they apply.

CAUTION

Use the same path on the source and destination machine for the <dm>_arch, edihist, mboxfr, and .q files.

File name	Definition	Product Level
apptptbl	Application Trading Partnership Rules Table	Gentran:Server Workstation. All levels of Gentran:Server for UNIX.
appxref	Trading Partner Code cross reference table for application files	Gentran:Server Workstation. All levels of Gentran:Server for UNIX. (Continued on next page)

(Contd) File name	Definition	Product Level
catvalue	Trading Partner category values file	Gentran:Server Workstation. All levels of Gentran:Server for UNIX.
contact	Trading Partner contact file	Gentran:Server Workstation. All levels of Gentran:Server for UNIX.
dlname	The distribution list file.	Gentran:Server for UNIX with Process Control Manager and higher.
dm	The data manager configuration record file.	Gentran:Server for UNIX with Process Control Manager and higher.
<dm>_arch	The archive file for the specified data manager.	Gentran:Server for UNIX with EC Workbench and higher.
.dmcfg	The data manager configuration file.	Gentran:Server for UNIX with Process Control Manager and higher.
dstlst	The distribution mailbox list file.	Gentran:Server for UNIX with Advanced Data Distribution and higher.
ds_name	The document reference number specifier file.	Gentran:Server for UNIX with Process Control Manager and higher.
ds_map	The EDI document reference number specifier mapping file.	Gentran:Server for UNIX with Process Control Manager and higher.
ds_tptbl	The EDI document reference number specifier TP file.	Gentran:Server for UNIX with Process Control Manager and higher.
ds_map_app	The APP document reference number specifier mapping file.	Gentran:Server for UNIX with Process Control Manager and higher.

(Continued on next page)

(Contd) File name	Definition	Product Level
ds_tptbl_app	The APP document reference number specifier TP file.	Gentran:Server for UNIX with Process Control Manager and higher.
edihist	The EDI history file.	Gentran:Server Workstation. All levels of Gentran:Server for UNIX.
mbox	The Mailbox file.	Gentran:Server for UNIX with Advanced Data Distribution and higher.
mboxfr	The Mailbox file register.	Gentran:Server for UNIX with Advanced Data Distribution and higher.
org	The Trading Partner organization file.	Gentran:Server Workstation. All levels of Gentran:Server for UNIX
pat	Pattern file	Gentran:Server for UNIX with Process Control Manager and higher.
patlst	Pattern list file	Gentran:Server for UNIX with Process Control Manager and higher.
.q	The queue file.	Gentran:Server for UNIX with Process Control Manager and higher.
.scrcfg	The script configuration file.	Gentran:Server for UNIX with Process Control Manager and higher.
stdin	Records are read from standard input (used with -l).	Gentran:Server Workstation. All levels of Gentran:Server for UNIX.
stdout	Records are written to standard output (used with -u).	Gentran:Server Workstation. All levels of Gentran:Server for UNIX. (Continued on next page)

(Contd) File name	Definition	Product Level
stderr	Write all user messages to standard error.	Gentran:Server Workstation. All levels of Gentran:Server for UNIX.
tp	The Trading Partner file.	Gentran:Server Workstation. All levels of Gentran:Server for UNIX.
tpmisc	Miscellaneous Trading Partner information file.	Gentran:Server Workstation. All levels of Gentran:Server for UNIX.
tprecon	Trading Partner reconciliation file.	Gentran:Server Workstation. All levels of Gentran:Server for UNIX.
tradacom	The Tradacom file	Gentran:Server Workstation. All levels of Gentran:Server for UNIX.
trn	The transaction register file.	Gentran:Server for UNIX with Process Control Manager and higher.
xtable	The Standard Cross Reference Table file	Gentran:Server Workstation. All levels of Gentran:Server for UNIX.

(Continued on next page)

XML translation option

If you have the XML translation option, you can also use isops to unload and load these files:

File name	Definition	Product Level
xmlspl1 xmlspl2 xmlspl3	Splitting Element Table files (by level)	Gentran:Server Workstation. All levels of Gentran:Server for UNIX.
xmltptbl	XML Trading Partnership Rules table	Gentran:Server Workstation. All levels of Gentran:Server for UNIX.
xmlxref	Trading Partnership Cross Reference table	Gentran:Server Workstation. All levels of Gentran:Server for UNIX.

How to Unload an ISAM File

Introduction

An unload utility converts an ISAM file format into an ASCII file so that you can move the file to another machine.

Specific unload and load utilities

The following ISAM files have unload and load utilities designed especially for them. The utilities are available from either the file editor or the command line.

- Trading Partnership records
- Supplementary TRADACOMS Trading Partnership records
- Contact records
- Organization records
- Standard cross-reference records
- Generic synonym lists (Visual Mapper only)
- Specific synonym lists (Visual Mapper only)
- Thesaurus lists (Visual Mapper only)
- XML Configuration records (if you have the XML translation option)

Reference

See the topic [How to Move All Trading Partnership Records](#) in this chapter for instructions on moving all your Trading Partnership records.

Using isops to unload an ISAM file

If a specific unload option is not available from the Gentran:Server menus or command line, you can use the **isops** command to unload the ISAM file. You can run **isops** from the command line or from the Run Programs command under the Main window Tools menu.

Procedure

Use this **isops** command to unload an ISAM file.

```
isops -u -f <filename> > <filename>.unl
```

Example

Use this **isops** command to unload the ds_name file to ds_name.unl.

```
isops -u -f ds_name > ds_name.unl
```

Reference

See the [Command Reference](#) chapter in the *Gentran:Server for UNIX and Workstation Technical Reference Guide* for detailed descriptions of all **isops** options.

How to Load an ISAM File

Introduction A load utility converts a *.unl* file (ASCII file) back to an ISAM file format.

When to use Use this procedure after you have unloaded an ISAM file to a *.unl* ASCII file and moved the *.unl* file to the destination.

Specific unload and load utilities The ISAM files below have unload and load utilities designed especially for them. The utilities are available from either the file editor or the command line.

- ▶ Trading Partnership records
- ▶ Supplementary TRADACOMS Trading Partnership records
- ▶ Contact records
- ▶ Organization records
- ▶ Generic synonym lists (Visual Mapper only)
- ▶ Specific synonym lists (Visual Mapper only)
- ▶ Thesaurus lists (Visual Mapper only)
- ▶ XML Configuration records (if you have the XML translation option)

Reference

See the topic [How to Move All Trading Partnership Records](#) in this chapter for instructions on moving all your Trading Partnership records.

Using isops to load an ISAM file

If a specific load option is not available from the Gentran:Server menus or command line, you can use the **isops** command to load the ISAM file. You can run **isops** from the command line or from the Run Programs command under the Main window Tools menu.

(Continued on next page)

Procedure Use this **isops** command to load an a *.unl* file to an ISAM file.

```
isops -l -f <filename> < <filename>.unl
```

Example

Use this **isops** command to load the *ds_name.unl* file to *ds_name.dat/.idx*.

```
isops -l -f ds_name < ds_name.unl
```

Reference

See the [Command Reference](#) chapter in the *Gentran:Server for UNIX and Workstation Technical Reference Guide* for detailed descriptions of all **isops** options.

How to Move ISAM Files to Another Machine

Introduction You can move either all records or some records in an ISAM file to another machine.

Procedure Use this procedure to move the records in an ISAM file.

Step	Action
1	<p>Go to the source environment and unload the ISAM files.</p> <p>System Response The utility reads the ISAM file and converts the data to an ASCII file and gives it an extension of <i>.unl</i>.</p> <p>Reference See the topic Moving Other Process Files in this chapter for instructions.</p> <p>Note Some unload utilities are available from a Gentran:Server menu or from the command line.</p>
2	<p>Do you want to move all the ISAM records in the file?</p> <ul style="list-style-type: none"> ▶ If YES, continue with Step 3. ▶ If NO, use an editor to remove the unwanted records from the <i>.unl</i> file and save your changes. <p>Reference See the <i>Gentran:Server for UNIX and Workstation Technical Reference Guide</i> for selected ISAM file record layouts.</p>
3	<p>Using an ASCII file transfer method, send or copy the <i>.unl</i> file to the appropriate directory on the destination machine.</p>
4	<p>Log on to the destination machine and change the current directory to the Gentran:Server root directory for the destination environment.</p> <p style="text-align: right;">(Continued on next page)</p>

(Contd) Step	Action
5	<p>Does the ISAM file already exist in the destination environment?</p> <ul style="list-style-type: none">▶ If YES, continue with Step 6.▶ If NO, you must create an empty one. <p>Reference See the topic How to Create Empty ISAM Files in the chapter Preparing to Move Files for more information about creating empty ISAM files.</p>
6	<p>Load the <i>.unl</i> file to the appropriate directory.</p> <p>System Response Gentran:Server copies the file, converts the copy to an ISAM file, and appends the new file to the existing file.</p> <p>Reference See the topic How to Load an ISAM File in this chapter for instructions.</p>

Moving Trading Partnership Records and Related Files

Overview

Trading Partnership records

The Trading Partnership core records include inbound and outbound translation information. They also include all Trading Partnership information for X12 and EDIFACT translation except organization and contact information.

Files related to the Trading Partnership core records include:

- Category records
- Contact records
- Organization records
- Standard Cross Reference records
- Supplementary TRADACOMS Trading Partnership records

The load/unload file utility

To move Trading Partnership records from one machine to another, use the **load/unload utility**. This is the recommended method.

- The **unload utility** reads a Trading Partnership file (ISAM) and converts the data to an ASCII file that you can safely move. The ASCII files have the extension *.unl*.
- The **load utility** converts an ASCII file to its original ISAM format. ISAM files have an extension of *.dat* and *.idx*.

Moving options

You can move:

- All Trading Partnership records
- Selected records
- All TRADACOMS supplementary Trading Partnership records.

The topics within this section contain instructions for each type of move.

(Continued on next page)

Before you begin

Before you begin moving trading partnership records, you must check the TP directory on the source and destination machines for the required ISAM files and create empty copies of any missing files. You must also open Trading Partnership Administration in Gentran:Server.

Checking ISAM files

You can open Trading Partnership Administration only if these files exist in the TP directory.

- ▶ tp.dat, tp.idx
- ▶ tpmisc.dat, tpmisc.idx
- ▶ tprecon.dat, tprecon.idx
- ▶ tradacom.dat, tradacom.idx
- ▶ contact.dat, contact.idx
- ▶ org.dat, ord.idx
- ▶ xtable.cat/idx

You must create empty versions of any missing files before opening Trading Partnership Administration.

Note

You can create settings only if these files exist in the TP directory.

- ▶ cattype.dat
- ▶ catvalue.dat, catvalue.idx

You must create empty versions of any missing files before creating settings.

Creating ISAM files

To create empty versions of required ISAM files, run the appropriate command line programs on the machine from which they are missing. This table describes the command line programs you must run to create the required ISAM files.

IF you want to create...	THEN run the...
Trading Partnership files: <i>tp.dat, tp.idx</i>	tpcreate command line program.
TRADACOM files: <i>tradacom.dat, tradacom.idx</i>	tccreate command line program.
Category files: <i>cattype.dat, catvalue.dat, catvalue.idx</i>	catcreat command line program.
Contact files: <i>contact.dat, contact.idx</i>	cocreate command line program (Continued on next page)

(Contd) IF you want to create...	THEN run the...
Organization files: <i>org.dat, org.idx</i>	orgcreat command line program
Standard Cross Reference Table files: <i>xtable.dat, xtable.idx</i>	xcreat command line program

Reference

See the topic [How to Create Empty ISAM Files](#) in the chapter [Preparing to Move Files](#) for more information about creating empty ISAM files.

Opening Trading Partnership Administration

You must open Gentran:Server Trading Partnership Administration on the source machine before unloading files. You unload files as part of the process by which you move files.

You will load the files after opening Gentran:Server Trading Partnership Administration on the destination machine.

To open Gentran:Server and the Trading Partnership Administration window, follow this procedure.

Step	Action
1	Open Gentran:Server
2	Click the Trading Partnership Administration icon.

How to Move All Trading Partnership Records

Names of Trading Partnership files

Your Trading Partnership file, *tp.dat* and *tp.idx*, is an indexed file that contains all the basic Trading Partnership records in your Gentran:Server environment. Additional Trading Partnership information is stored in these files:

- ▶ *tpmisc.dat* and *tpmisc.idx*
- ▶ *tradacom.dat* and *tradacom.idx*
- ▶ *tprecon.dat* and *tprecon.idx*

Moving a Trading Partner file

Use this procedure to move a Trading Partnership file.

Step	Action
1	Start a client that connects to the source environment.
2	Click on the Trading Partnership Administration icon from the Main window. System Response The Trading Partnership Administration window is displayed.
3	Select Tools .
4	Click Unload on the Tools menu.
5	Click Trading Partnership Record on the Unload submenu. System Response Gentran:Server copies the Trading Partnership files and converts the copies to ASCII files with these names: <ul style="list-style-type: none"> ▶ <i>tp.unl</i> ▶ <i>tpmisc.unl</i> ▶ <i>tradacom.unl</i> ▶ <i>tprecon.unl</i> <p>The system displays a message that indicates the number of records it unloaded.</p>
6	Using an ASCII transfer method, send or copy the <i>.unl</i> files to the trading partner directory on the destination machine.
7	Exit the client that is logged into the source environment.

(Continued on next page)

(Contd) Step	Action
8	Start the client that connects to the destination environment and open Trading Partnership Administration.
9	Click Tools on the menu bar.
10	Click Load on the Tools menu.
11	Click Trading Partnership Record on the Load submenu. System Response Gentran:Server copies the files, converts the copies to indexed Trading Partnership files, and appends the new files the existing files. The system displays a message that indicates the number of records it loaded.

How to Move Selected Trading Partnership Records

Introduction You can select and unload Trading Partnership records by Group Organization Code or Interchange Organization Code.

Moving Selected Records for Multiple Codes

When you move selected Trading Partnership records, Gentran:Server overwrites the existing ASCII Trading Partnership files.

- ▶ tp.unl
- ▶ tpmisc.unl
- ▶ tradacom.unl
- ▶ tprecon.unl
- ▶ contact.unl
- ▶ org.unl

You must copy the files for the first code to the destination machine and load them before moving the records for a second code.

Warning

Gentran:Server **overwrites** the existing ASCII Trading Partnership files each time you move selected records. These files can contain only the records for one code at a time when you move selected Trading Partnership records.

Procedure Use this procedure to move selected Trading Partnership records from one PC to another or from one UNIX machine to another.

Step	Action
1	Select Unload from the Tools menu on the Trading Partnership Administration menu bar.
2	Click Selective Unload of the Trading Partnership . System Response The system displays the Selective Unload of Trading Partner Records dialog box.

(Continued on next page)

(Contd) Step	Action
3	<p>Do you want to unload Trading Partnership records by Interchange Level Organization?</p> <ul style="list-style-type: none"> ▶ If YES, click the Interchange Level Organization option button and GO TO Step 5. ▶ If NO, continue with the next step.
4	Click the Group Level Organization option button.
5	<p>Click Selective Organization.</p> <p>System Response The system displays the Select Interchange/Group Organization To Unload Trading Partnerships dialog box.</p>
6	<p>Select the Interchange ID or Organization Code for the records you are moving, then click OK.</p> <p>System Response Gentran:Server copies the selected Trading Partnership records and converts the copies to ASCII files with these names:</p> <ul style="list-style-type: none"> ▶ tp.unl ▶ tpmisc.unl ▶ tradacom.unl ▶ tprecon.unl ▶ contact.unl ▶ org.unl <p>The system displays a message that indicates the number of records it unloaded.</p>
7	Using an ASCII transfer method, send or copy the <i>.unl</i> files to the Trading Partner directory on the destination machine.
8	Exit the client that is logged into the source environment or the Workstation computer that contains the environment.
9	Start the Windows client or Workstation computer that connects to the destination environment and open TP Administration.
10	Click Tools on the menu bar.
11	Click Load on the Tools menu.

(Continued on next page)

(Contd) Step	Action
12	Click Trading Partnership Record on the Load submenu. System Response Gentran:Server copies the Trading Partner file, converts the copy to an indexed Trading Partnership file, and appends the new file to the existing file. The system displays a message that indicates the number of records it loaded.
13	Click Contact Records on the Load submenu. System Response Gentran:Server copies the file, converts the copy to an indexed Contact Records file, and appends the new file to the existing file. The system displays a message that indicates the number of records it loaded.
14	Click Organization Records on the Load submenu. System Response Gentran:Server copies the file, converts the copy to an indexed Organization Records file, and appends the new file to the existing file. The system displays a message that indicates the number of records it loaded.

How to Move TRADACOMS Supplementary TP Records

Introduction Additional information is available for Trading Partnerships using TRADACOMS standards. This information is kept in supplementary records. The file containing this information is named *tradacom*.

Procedure Use this procedure to move TRADACOMS supplementary Trading Partnership records from one machine to another.

Step	Action
1	<p>Unload the TRADACOMS supplementary Trading Partnership records by issuing this command from the command line: tcmv -u -cp <path to config file></p> <p>System Response Gentran:Server copies the TRADACOMS records and converts the copy to an ASCII file with the name <i>tradacom.unl</i>. The system displays a message indicating the number of records it unloaded.</p>
2	<p>Using an ASCII transfer method, send, or copy the <i>tradacom.unl</i> file to the trading partner directory on the destination machine.</p> <p>Reference See the topic How to Move a Single ASCII or Binary File in this chapter for instructions.</p>
3	<p>Log on to the destination machine and change the current directory to the Gentran:Server root directory.</p> <p style="text-align: right;">(Continued on next page)</p>

(Contd) Step	Action
4	<p>Load the <i>tradacom.unl</i> file to the trading partner directory on the destination PC by issuing this command from the DOS command line: tcmv -l -cp <path to config file></p> <p>System Response Gentran:Server copies the file, converts the copy to an indexed Trading Partnership file, and appends the new file to the existing file. The system displays a message indicating the number of records it loaded.</p> <p>Reference See the chapter Command Reference in the <i>Gentran:Server for UNIX and Workstation Technical Reference Guide</i> for information about related parameters.</p>

How to Move Organization Records

Introduction

The file containing the Trading Partnership organization records is the organization file (*org.dat/idx*).

You must move the organization file if you move the Trading Partnership records to which they are related.

Moving Organization files to another machine

Use this procedure to move files from one machine to another.

Step	Action
1	Click Tools on the Trading Partnership Administration menu bar.
2	Select Unload from the Tools menu.
3	Select Organization Record from the Unload menu. System Response Gentran:Server copies the organization file and converts the copy to an ASCII file with the name <i>org.unl</i> . The system displays the number of records that it unloaded.
4	Using an ASCII transfer method, send or copy the <i>org.unl</i> file to the trading partner directory on the destination machine.
5	Exit the client that is logged into the source environment or the Workstation computer that contains the environment.
6	Start the Windows client or Workstation computer that connects to the destination environment and open Trading Partnership Administration.
7	Click Tools on the menu bar.
8	Click Load on the Tools menu.
9	Click Organization Record from the Tools menu. System Response Gentran:Server copies the file, converts the copy to an indexed organization file, and appends the new file to the existing file. The system displays the number of records that it loaded.

Moving Contact Records

Introduction The file containing contact records is the contact file (*contact.dat/idx*).

You must move this file if you move the Trading Partnership records to which they are related.

Moving contact records

Use this procedure to move files from one machine to another.

Step	Action
1	Click Tools on the Trading Partnership Administration menu bar.
2	Click Unload on the Tools menu.
3	Click Contact Record on the Unload submenu. System Response Gentran:Server copies the contact file and converts the copy to an ASCII file with the name <i>contact.unl</i> . The system displays the number of records that it unloaded.
4	Using an ASCII transfer method, send or copy the <i>contact.unl</i> file to the trading partner directory on the destination machine.
5	Exit the client that is logged into the source environment or the Workstation computer that contains the environment.
6	Start the Windows client or Workstation computer that connects to the destination environment and open Trading Partnership Administration.
7	Click Tools on the Trading Partnership Administration menu bar.
8	Click load on the Tools menu.
9	Click Contact Record on the Load submenu.

How to Move Standard Cross Reference Records

Introduction

The file containing the Standard Cross Reference Table records is the file (*xtable.dat/idx*).

Moving Standard Cross Reference files to another machine

Use this procedure to move files from one UNIX machine to another.

Step	Action
1	Click Tools on the Trading Partnership Administration menu bar.
2	Select Unload from the Tools menu.
3	Select Standard Cross Reference Records from the Unload menu. System Response Gentran:Server copies the file and converts the copy to an ASCII file with the name <i>xtable.unl</i> . The system displays the number of records that it unloaded.
4	Using an ASCII transfer method, send or copy the <i>xtable.unl</i> file to the destination machine.
5	Exit the client that is logged into the source environment.
6	Start the client that connects to the destination environment and open Trading Partnership Administration.
7	Click Tools on the Trading Partnership Administration menu bar.
8	Click Load on the Tools menu.
9	Click Standard Cross Reference Records from the Tools menu. System Response Gentran:Server copies the file, converts the copy to an indexed organization file, and appends the new file to the existing file. The system displays the number of records that it loaded.

Moving Maps and Map-related Files

Overview

Introduction

Maps usually have one or more related files that must be moved along with the map. Related files include:

- ▶ Trading Partnership record
- ▶ File definition (Application Integration maps only)
- ▶ Application description (Visual Mapper maps only)
- ▶ Generic synonym list (Visual Mapper maps only)
- ▶ Specific synonym list (Visual Mapper maps only)
- ▶ Thesaurus list (Visual Mapper maps only)

Procedure

Use this procedure to move map files.

Step	Action
1	<p>Move the map.</p> <p>Reference See the topic How to Move Application Integration Maps in this chapter for instructions.</p>
2	<p>Is the map for outbound processing?</p> <ul style="list-style-type: none">▶ If YES, use an ASCII file transfer method to move the file description associated with the map.▶ If NO, you are finished moving the map file. <p>Reference See the topic How to Move a Single ASCII or Binary File in this chapter for instructions.</p>

How to Move Application Integration Maps

Introduction Uncompiled and compiled Application Integration maps are stored as binary files (<mapname>.map). You can move both map types using a binary transfer method such as FTP using the binary (bi) switch.

Moving compiled maps

Use this procedure to move compiled maps from one machine to another.

Step	Action
1	<p>Using a binary transfer method, send or copy the following file(s) to the appropriate directories on the destination machine:</p> <ul style="list-style-type: none"> ▶ <map_directory>\<mapname>.tpl ▶ <map_directory>\<mapname>.map ▶ <file_definition>\<file_definition_name>.ddf. (Use ASCII transfer method) <p>Note The file definition is necessary for outbound maps in all Gentran:Server product levels.</p>
2	<p>Did you transfer uncompiled map files?</p> <ul style="list-style-type: none"> ▶ If YES, compile the transferred maps. ▶ If NO, you are finished. <p>Reference See the <i>Gentran:Server for UNIX and Workstation Application Integration Guide</i> for instructions on compiling maps.</p>

How to Move Visual Mapper Maps

Introduction

If you use the Visual Mapper, you should move only uncompiled maps from one machine to another, and compile the maps after you move them. Uncompiled maps are stored as map files with a .vmp extension (<mapname>.vmp).

Moving uncompiled maps

Use this procedure to move uncompiled maps from one machine to another.

Step	Action
1	Using an ASCII transfer method, send or copy the following file(s) to the appropriate directories on the destination machine: <ul style="list-style-type: none">▶ <map_directory>\<mapname>.vmp▶ <app_directory>\<appname>.app
2	Compile the transferred maps. Reference See the <i>Gentran:Server for UNIX and Workstation Mapping and Translation Guide</i> for instructions on compiling maps.

How to Move the Generic Synonym List

Introduction

If you use the Visual Mapper, you may need to move the generic synonym list. The generic synonym list applies to one or more (or even all) maps. You can have only one generic synonym file in your Gentran:Server environment at any one time. The name of the generic synonym file is *generic.dat/idx*.

Moving a generic synonym file

Use this procedure to move the Visual Mapper's generic synonym file from one machine to another.

Step	Action
1	Open the Synonym Editor in Gentran:Server.
2	Click File on the Synonym Editor menu bar.
3	Click Unload File on the File menu. System Response Gentran:Server reads and converts the generic synonym file to an ASCII file with the name <i>generic.unl</i> . The system displays the number of records it unloaded.
4	Specify the path and <i>generic.unl</i> in the Unload File dialog box.
5	Using an ASCII transfer method, send or copy the <i>generic.unl</i> file to the maps directory on the destination machine.
6	Start the Windows client or Workstation computer that connects to the destination environment and change to the Gentran:Server root directory.
7	If there is no generic synonym file on the destination machine, create an empty one now by issuing this command from the command line: sncreate <map_directory>/generic -cp <config path>
8	Exit the client that is logged into the source environment or the Workstation computer that contains the environment.
9	Start the Windows client or Workstation computer that connects to the destination environment and open Trading Partnership Administration . (Continued on next page)

(Contd) Step	Action
10	Open the Synonym Editor in Gentran:Server.
11	Click File on the Synonym Editor menu bar.
12	Click Load File on the File menu.
13	Specify the path and <i>generic.unl</i> in the Load File dialog box. System Response Gentran:Server copies the file, converts the copy to an indexed generic synonym file, and appends the new file to the existing file. The system then displays the number of records it loaded.

How to Move Specific Synonym Lists

Introduction

If you use the Visual Mapper, you may need to move the specific synonym lists associated with your maps. A specific synonym list applies to a single map. You can have one specific synonym file in your Gentran:Server system for each map. The name of the specific synonym file is *<mapname>.dat/idx*, where *<mapname>* represents the name of the map.

The file contains all the specific synonym lists for a map in the following format:
listname|original value|substitute value.

Moving specific synonym lists

Use this procedure to move all specific synonym lists for a Visual Mapper map from one machine to another.

Step	Action
1	<p>Unload the specific synonym file by issuing this command from the UNIX command line:</p> <pre>symmv <map_directory>/<mapname> -u -cp<config path></pre> <p>System Response</p> <p>Gentran:Server reads and converts the specific synonym file to an ASCII file with the name <i><mapname>.unl</i>. The system then displays the number of records it unloaded.</p>
2	Using an ASCII transfer method, send or copy the <i><mapname>.unl</i> file to the maps directory on the destination machine.
3	Start the Windows client or Workstation computer that connects to the destination environment and change to the Gentran:Server root directory.
4	<p>If there is no specific synonym file with this name on the destination machine, create an empty one now by issuing this command from the command line:</p> <pre>sncreate <map_directory>/<mapname> -cp <config path></pre> <p style="text-align: right;">(Continued on next page)</p>

(Contd) Step	Action
5	<p>Load the <mapname>.unl file to the maps directory on the destination machine by issuing this command from the command line:</p> <pre>symmv <map_directory>/<mapname> -lo -cp <config path></pre> <p>System Response Gentran:Server copies the file, converts the copy to an indexed specific synonym file, and appends the new file to the existing file. The system displays the number of records it loaded.</p> <p>Note Use the -l command to overwrite the existing synonym file instead of appending to it.</p> <p>Reference For an explanation of the parameters recommended here for symmv and sncreate, see the chapter Command Reference in the <i>Gentran:Server for UNIX and Workstation Technical Reference Guide</i>.</p>

How to Move a Thesaurus List

About thesaurus lists

If you use the Visual Mapper, you may need to move the thesaurus list. Thesaurus lists are available for use when automapping any map in your Gentran:Server environment. You can have only one thesaurus file in your Gentran:Server environment at any time. The name of the thesaurus file is *thesaurs.dat/idx*.

The load/unload file feature

You must use the file load/unload feature to move the Visual Mapper's thesaurus file. this feature enables you to import and export the thesaurus list as ASCII files.

Moving the Thesaurus

Use this procedure to move the Visual Mapper's thesaurus file from one machine to another.

Step	Action
1	Open the Thesaurus Editor in Gentran:Server.
2	Click File on the menu bar.
3	Click Unload File on the File menu.
4	Specify the path and <i>thesaurs.unl</i> in the Unload File dialog box, then click OK . System Response Gentran:Server copies the thesaurus file and converts the copy to an ASCII file with the name <i>thesaurs.unl</i> . The system then displays the number of records that it unloaded.
5	Using an ASCII transfer method, send or copy the <i>thesaurs.unl</i> file to the maps directory on the destination machine.
6	Exit the client that is logged into the source environment or the Workstation computer that contains the environment.
7	Start the Windows client or Workstation computer that connects to the destination environment and open Trading Partnership Administration .
8	Open the Thesaurus Editor in Gentran:Server. (Continued on next page)

(Contd) Step	Action
9	Click File on the menu bar.
10	Click Load File on the File menu.
11	Specify the path and <i>thesaurs.unl</i> in the Load File dialog box. System Response Gentran:Server copies the file and converts the copy to an indexed thesaurus file. If a thesaurus file exists, Gentran:Server appends the new file to the existing file. The system then displays the number of records that it loaded.

Moving Other Process Files

Process File Checklist

Introduction

Your organization may have created custom UNIX shell scripts, DOS batch files, component files, and user administration files to work with your Gentran:Server processes. When you move Gentran:Server files from one machine to another, you need to move these custom files, your extension configuration files, and any other files that affect Gentran:Server processing.

Checklist

Use this checklist to help identify other process files you may need to move. Add to the list any other files that affect your Gentran:Server data flow and processing.

Note

Many of the files in this list are used only with Gentran:Server for UNIX. If you have Gentran:Server Workstation, you will not have many of these file types

✓	File Type
	LOCKS files (both communication device and script name locks)
	Custom UNIX shell scripts or DOS batch files
	User administration files
	Custom Mail_Proc files
	Address lists
	Custom component files associated with custom shell process: <ul style="list-style-type: none"> ▶ C and C++ executable files ▶ Cross-reference tables ▶ Associated directory structure or permissions structure
	Communications software
	Custom Life Cycle entries and processes (for example, ODBC linkage)
	JCL/RCL files used to wrap-around files being sent to mainframe computers

(Continued on next page)

✓	(Contd) File Type
	Logon and FTP address information, if configured differently between machines
	Extension entries and configuration files (for example, Baan, Oracle, SAP)
	Other Files

How to Move DOS Batch Files

Introduction DOS batch files are scripts or command files that your organization has created.

Procedure Use this table to select a file transfer method for a batch file.

IF the file is...	THEN use...
Compiled code	A binary file transfer method.
Not compiled code	An ASCII file transfer method.

Reference

See the section [Moving ASCII and Binary Files](#) in this chapter for instructions on transferring ASCII and binary files.

Cleaning Up After the Move

Contents	Overview	
	▶ Introduction	2
	▶ The Clean-Up Process	3
	Procedures	
	▶ How to Reset the Interchange and Group Control Numbers	5
	▶ How to Update the Interchange and Group ID Codes	6
	▶ How to Update the Interchange Control Header Field	7
	▶ How to Edit Files with Absolute Path Names	8

Overview

Introduction

In this chapter

This chapter describes the tasks you must complete after you move files from a source environment to a destination environment.

Key terms

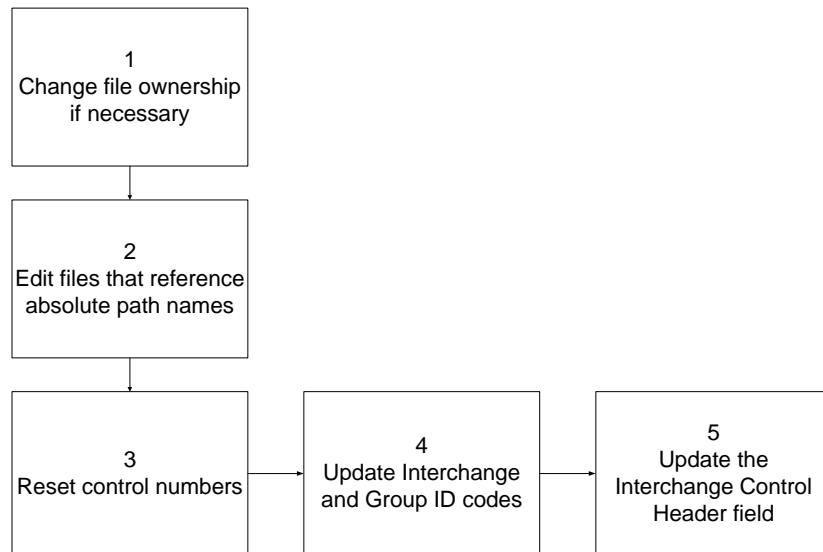
This table lists the key terms used in this chapter.

Term	Description
absolute path name	The full address or path to a file starting at root, /, or \.
control numbers	The counters used to keep track of the business documents that you send and receive.
Interchange and Group ID codes	Unique identifiers that are inserted into the Interchange envelope when data is translated.

The Clean-Up Process

Introduction After you move Gentran:Server Workstation files from a source environment to a destination environment, you must clean up the destination area.

Process diagram This illustration shows the tasks in the clean-up process.



Tasks Use this task list to perform the clean-up tasks.

Task	Description
1	If necessary, change the ownership of the files you moved so that the user owner of the source environment and the destination environment are the same.
2	Edit files that reference absolute path names. Reference See the topic How to Edit Files with Absolute Path Names in this chapter for instructions. (Continued on next page)

(Contd) Task	Description
3	<p>Do you want to reset the Interchange and Group control numbers?</p> <ul style="list-style-type: none">▶ If YES, modify the Interchange Organization or Group Organization record. <p>Reference See the topic How to Reset the Interchange and Group Control Numbers in this chapter.</p> <ul style="list-style-type: none">▶ If NO, continue with Task 5.
4	<p>Do you want to update the Interchange and Group ID codes?</p> <ul style="list-style-type: none">▶ If YES, modify the Interchange Organization or Group Organization record. <p>Reference See the topic How to Update the Interchange and Group ID Codes in this chapter.</p> <ul style="list-style-type: none">▶ If NO, continue with Task 6.
5	<p>Do you want to update the Interchange Control Header field?</p> <ul style="list-style-type: none">▶ If YES, modify the field in the Trading Partnership record. <p>Reference See the topic How to Update the Interchange Control Header Field in this chapter.</p>

Procedures

How to Reset the Interchange and Group Control Numbers

Introduction The Interchange and Group Control Numbers are the counters used to track the business documents that you:

- Send to your trading partner
- Receive from the trading partner.

These control numbers increase when you create a Trading Partnership record in a source environment and send and receive source documents. To track the actual counts during destination processing, you should reset the control numbers after you move the Trading Partnership record to the destination environment.

Procedure Use this procedure to reset the control numbers.

Reference

If you have a very large number of Trading Partner records to edit, you may want to use the mass edit utility. See the [Working with Trading Partnerships](#) chapter in the *Gentran:Server for UNIX and Workstation Application Integration User's Guide* for instructions.

Step	Action
1	Start Gentran:Server.
2	Open Trading Partnership Administration.
3	Select the Interchange Organization or Group Organization record that you want to modify.
4	Select Selected Item from the Edit menu to display the record.
5	Modify the values in the Control numbers fields.
6	Click OK to save your changes.

How to Update the Interchange and Group ID Codes

Introduction The Interchange and Group ID codes are unique identifiers that Gentran:Server inserts into the Interchange envelope when it translates data.

If you used source Interchange and Group ID codes when you created the Trading Partnership record in the source environment, you must replace the codes after you move the Trading Partnership record to the destination environment.

Procedure Use this procedure to update the Interchange and Group ID codes.

Comment

If you have a very large number of Trading Partner records to edit, you may want to use the mass edit utility. See the [Working with Trading Partnerships](#) chapter in the *Gentran:Server for UNIX and Workstation Application Integration User's Guide* for instructions.

Step	Action
1	Start Gentran:Server.
2	Open Trading Partnership Administration.
3	Select the Interchange Organization or Group Organization record that you want to modify.
4	Select Selected Item from the Edit menu to display the record.
5	Modify the values in the Interchange IDs or Group IDs fields.
6	Click OK to save your changes.

How to Update the Interchange Control Header Field

Introduction The **Interchange Control Header** field defines the type of header segment used for the Interchange envelope.

Procedure Use this procedure to update the **Interchange Control Header** field.

Comment

If you have a very large number of Trading Partner records to edit, you may want to use the mass edit utility. See the [Working with Trading Partnerships](#) chapter in the *Gentran:Server for UNIX and Workstation Application Integration User's Guide* for instructions.

Step	Action
1	Start Gentran:Server.
2	Open the Trading Partnership record that you want to modify in the Trading Partnership Editor.
3	Click the Outbound EDI tab or the Outbound Acknowledgment tab. System Response Gentran:Server displays the outbound information.
4	Click the Edit button that is next to the Interchange Control Header field.
5	Enter P for Production (Destination) in the ISA15 Test/Production Indicator field.
6	Click OK to save your changes.

How to Edit Files with Absolute Path Names

Definition An **absolute path name** is the full address or path to a file starting at root, / or \.

Moving files with references to absolute path names

When you move files that reference absolute path names, you must edit the absolute path name to match the directory structure of the new environment. If you do not, Gentran:Server will not be able to find the file.

Files that may contain absolute path names

These types of files may contain absolute path names:

- ▶ Trading Partnership records
 - ▶ Batch files (*.bat*)
-

Procedure Use this procedure to edit absolute path names in files.

Step	Action
1	Open the file or record in the appropriate editor and check for any references to absolute path names.
2	Replace the absolute path with a relative path, a variable-based path, or another absolute path that matches your destination environment's directory structure. Example Relative Path: c:*\<file name> Absolute Path: c:\win\mainframe\<file name>.
3	Save your changes.

Index

Symbols

.unl. 6-37

A

absolute path name 7-8

ASCII 6-4

file extensions for GENTRAN/
Server 6-4

ASCII files

moving overview 6-4

moving several at once 6-7

C

clean-up process 7-3

contact records

moving 6-30

control numbers

resetting 7-5

D

directory tree

problems with copying 3-3

documentation conventions 1-vii

F

file checklist 4-15

file description

moving 6-32

file representations 4-7

GENTRAN

Server 4-8, 4-10

XML translation option 4-10

file transfer method

choosing 4-12

file transfer methods 4-7, 4-11

file transfer types 4-7

files

identifying those to move 4-13

G

generic synonym lists

moving 6-35

GENTRAN:Mentor messages, see Messages

group control number

resetting 7-5

Group ID code

updating 7-6

I

Interchange Control Header field 7-7

updating 7-7

Interchange control number

resetting 7-5

Interchange ID code

updating 7-6

ISAM files 3-4

conversion utilities 4-11

creating empty 5-5

extensions 6-8

isops utility and 6-9

loading 6-15

moving overview 6-8

moving to another machine 6-17

structure 6-8

isops utility 6-9

loading an ISAM file with 6-15

unloading an ISAM file with 6-14

using to create empty ISAM file 5-5

L

load utility 4-11, 6-8

log files 1-5

M

map-related files

deciding which to move 4-13

moving overview 6-32

maps

moving 6-33

moving overview 6-32

Messages 2-1

alphabetical order (not starting with variables) 2-79

alphabetical order (starting with variables) 2-72

message conventions 2-3

numerical order 2-4

moving

all Trading Partnership records 6-22

contact records 6-30

generic synonym lists 6-35

- maps 6-33
- organization records 6-29
- selected Trading Partnership records 6-24
- specific synonym lists 6-37
- thesaurus lists 6-39
- moving files
 - selecting a time for 4-19
- moving Standard Cross Reference records 6-31
- moving TRADACOMS supplementary TP records 6-27

O

- org.unl 6-29
- organization records
 - moving 6-29

P

- path name
 - absolute 7-8
- planning process 4-3
- preparation process 5-7
- process file checklist 6-41
- product suite 1-3
- production environment
 - describing 4-5

S

- sncreate program 6-35, 6-37
- specific synonym lists
 - moving 6-37
- Standard Cross Reference records
 - moving 6-31
- synmv program 6-38
- synonym lists

- moving specific 6-37
- System messages, see Messages

T

- tcmv -l command 6-28
- tcmv -u command 6-27
- temporary files 1-5
- test environment
 - describing 4-5
- thesaurs 6-39
- thesaurs.unl 6-39
- thesaurus lists 6-39
 - moving 6-39
- tradacom.unl 6-27
- TRADACOMS supplementary TP records
 - moving 6-27
- Trading Partnership core records 6-19
- Trading Partnership records
 - moving all 6-22
 - moving options 6-19
 - moving selected 6-24
- Trading Partnership-related files
 - deciding which to move 4-14
- transferring files
 - methods for 4-11

U

- UNIX Error Codes 2-171
- unload utility 4-11, 6-8

V

- visual mapper maps
 - moving 6-34