

IBM Sterling Gentran:Server for UNIX - Workstation

Maintenance and Troubleshooting Guide

Version 6.2



Copyright

This edition applies to the 6.2 Version of IBM® Sterling Gentran:Server® for UNIX - Workstation and to all subsequent releases and modifications until otherwise indicated in new editions.

Before using this information and the product it supports, read the information in *Notices* on page N-1.

Licensed Materials - Property of IBM

IBM® Sterling Gentran:Server® for UNIX - Workstation

© Copyright IBM Corp. 1991, 2011. All Rights Reserved.

US Government Users Restricted Rights - Use, duplication or disclosure restricted by GSA ADP Schedule Contract with IBM Corp.

Table of Contents

About This Guide

- ▶ Welcome viii
- ▶ Chapter Contents ix
- ▶ Related Publications x
- ▶ Documentation Conventions xiv

Log Files

System Messages

- ▶ Overview 2-2
- ▶ Messages in Numerical Order 2-4
- ▶ Messages in Alphabetical Order (Starting with Variables) 2-60
- ▶ Messages in Alphabetical Order (Not Starting with Variables) 2-64
- ▶ Sterling Gentran:Server Return Codes 2-95
- ▶ UNIX Error Codes 2-100
- ▶ DISAM Error Codes 2-103

Moving Files Overview

Overview

- ▶ Introduction 3-2
- ▶ The Source-to-Destination Process 3-3

Planning the Move

Overview

- ▶ Introduction 4-2
- ▶ The Planning Process 4-3

Describing the Source and Destination Environments

- ▶ Overview 4-5

Choosing a File Transfer Method

- ▶ Transfer Types, Methods, and File Types 4-7
- ▶ How to Choose a File Transfer Method 4-12
- ▶ How to Identify the Files to Move 4-13
- ▶ File Checklist 4-15
- ▶ How to Select a Time to Move Files 4-18

Preparing to Move Files

Overview

- ▶ Introduction 5-2

Preparing the Destination Environment

- ▶ Overview 5-4
- ▶ How to Create Empty ISAM Files 5-5

Preparing the Source Environment

- ▶ Overview 5-6
- ▶ The Workstation Preparation Process 5-7

Moving Files

- ▶ Introduction 6-2

Moving ASCII and Binary Files

- ▶ Overview 6-4
- ▶ How to Move a Single ASCII or Binary File 6-6
- ▶ How to Move Several ASCII or Binary Files 6-7

Moving ISAM Files

- ▶ Overview 6-8
- ▶ How to Unload an ISAM File 6-14
- ▶ How to Load an ISAM File 6-15
- ▶ How to Move ISAM Files to Another Machine 6-17

Moving Trading Partnership Records and Related Files

- ▶ Overview 6-19
- ▶ How to Move All Trading Partnership Records 6-22
- ▶ How to Move Selected Trading Partnership Records 6-24
- ▶ How to Move TRADACOMS Supplementary TP Records 6-28
- ▶ How to Move Organization Records 6-30
- ▶ Moving Contact Records 6-31
- ▶ How to Move Standard Cross Reference Records 6-32

Moving Maps and Map-related Files

- ▶ Overview 6-33
- ▶ How to Move Application Integration Maps 6-34
- ▶ Moving Other Process Files 6-35
- ▶ Process File Checklist 6-35
- ▶ How to Move DOS Batch Files 6-37

Cleaning Up After the Move

Overview

- ▶ Introduction 7-2

- ▶ The Clean-Up Process7-3

Procedures

- ▶ How to Reset the Interchange and Group Control Numbers7-5
- ▶ How to Update the Interchange and Group ID Codes7-6
- ▶ How to Update the Interchange Control Header Field7-7
- ▶ How to Edit Files with Absolute Path Names7-8

Notices

Index

About This Guide

Contents

- ▶ Welcome viii
- ▶ Chapter Contents ix
- ▶ Related Publications x
- ▶ Documentation Conventions xiv

Welcome

Welcome to the IBM® Sterling Gentran:Server® for UNIX - Workstation electronic commerce software.

What is in this guide

This guide provides instructions for maintaining your Sterling Gentran:Server installation. It also provides troubleshooting information to help you determine the cause and solution of problems that may occur with your installation.

Who should use this guide

This guide is for administrators charged with managing electronic commerce application software.

It can also be used by Sterling Gentran:Server users to determine the correct response to error or warning messages.

Chapter Contents

This table describes the contents of chapters within this Maintenance and Troubleshooting Guide.

Chapter Title	Description
About This Guide	Explains the content, organization, and conventions in this guide. Explains how to get help if you cannot solve a problem by using the information provided in this guide.
Log Files	Summarizes the location of log files and temporary files for IBM® Sterling Gentran:Server® for UNIX - Workstation.
System Messages	Lists warning and error messages you may encounter when using Sterling Gentran:Server. Explains the meaning of the message and the action you should take to correct the situation. Includes UNIX and DISAM error messages.
Moving Files Overview	Describes the process for moving files.
Planning the Move	Explains how to describe the source and destination environments and choose a file transfer method.
Preparing to Move Files	Describes preliminary actions required before moving Sterling Gentran:Server files.
Moving Files	Explains how to move Sterling Gentran:Server files from one stand-alone PC to another.

Related Publications

Sterling Gentran:Server documentation

This table describes additional documentation for the Sterling Gentran:Server software.

Document	Description
<i>IBM® Sterling Gentran:Server® for UNIX Upgrade and Data Conversion Guide</i>	Instructions for upgrading from previous versions of IBM® Sterling Gentran:Server® for UNIX and IBM® Sterling Gentran:Server® for UNIX - Workstation. Also includes instructions for converting the files that are part of the upgrade.
<i>IBM® Sterling Gentran:Server® for UNIX Installation Checklist</i>	Description of the recommended sequence in which you should install and configure system components.
<i>IBM® Sterling Gentran:Server® for UNIX Getting Started Guide</i>	Instructions for installing the Sterling Gentran:Server software and performing setup tasks, such as setting up security. Instructions for starting and exiting Sterling Gentran:Server and for setting preferences and default values. Also includes instructions for checking files in and out and saving files.
<i>IBM® Sterling Gentran:Server® for UNIX - Workstation Getting Started Guide</i>	Instructions for installing the IBM® Sterling Gentran:Server® for UNIX - Workstation software and performing setup tasks. Instructions for starting and exiting Sterling Gentran:Server and for setting preferences and default values. Also includes instructions for checking files in and out and saving files.
<i>IBM® Sterling Gentran:Server® for UNIX Application Integration User Guide</i>	Instructions for performing mapping and translation tasks using the Sterling Gentran:Server Application Integration system.
<i>IBM® Sterling Gentran:Server® for UNIX HIPAA Compliance and NCPDP User Guide</i>	Instructions for mapping and translating NCPDP files with the Application Integration system.

Document	Description
<i>IBM® Sterling Gentran:Server® for UNIX GENCOD User Guide</i>	Instructions for mapping and translating GENCOD files with the Application Integration system.
<i>IBM® Sterling Gentran:Server® for UNIX VDA User Guide</i>	Instructions for mapping and translating VDA files with the Application Integration system.
<i>IBM® Sterling Gentran:Server® for UNIX Technical Reference Guide</i>	Describes processes, lists command-line commands in alphabetical order, and describes file record layouts and data type formats.
<i>IBM® Sterling Gentran:Server® for UNIX - EC Workbench Data Flow Administration Guide</i>	User instructions for configuring data flows using the Sterling Gentran:Server software.
<i>IBM® Sterling Gentran:Server® for UNIX - Process Control Manager Data Flow Administration Guide</i>	User instructions for configuring data flows using the Sterling Gentran:Server software.
<i>IBM® Sterling Gentran:Server® for UNIX Maintenance and Troubleshooting Guide</i>	Instructions for maintaining your Sterling Gentran:Server installation. Also provides troubleshooting information to help determine the cause and solution of problems that may occur.
<i>IBM® Sterling Gentran:Server® for UNIX with ADD User Guide</i>	Instructions for configuring and using the Advanced Data Distribution system.
<i>IBM® Sterling Gentran:Server® for UNIX XML Translation User Guide</i>	Instructions for mapping and translating XML files with the Application Integration system.

Document	Description
<i>IBM® Sterling Gentran:Server® for UNIX with ADD FTP Daemon User Guide</i>	Instructions for configuring and using the FTP Daemon tool with IBM® Sterling Gentran:Server® for UNIX.
Online Help	Context-sensitive help screens describing the Sterling Gentran:Server dialog boxes and features. Also includes procedures for using the mapping and translation and the data flow administration software.

**Other
documentation**

This table lists other documentation you may need to refer to when installing and setting up Sterling Gentran:Server.

Description	Source
Instructions for installing and using the operating system on your computer.	Your hardware vendor The computer manufacturer

Documentation Conventions

Typographic conventions

This table describes the typographic conventions used in this guide.

Convention	Use
Italics	<p>This typeface is used for titles of other manuals and documents, names of files and file extensions, and to emphasize important information.</p> <p>Example <i>IBM® Sterling Gentran:Server® for UNIX - Workstation Application Integration User Guide</i></p>
Bold	<p>Bold type is used for program names, key terms the first time they are used within a chapter, and entries you are to make on-screen.</p> <p>Example A password is a set of characters a user must enter to gain access to a system.</p>

Symbols used within syntax statements

This table describes symbols used within syntax statements.

Symbol	Use
< >	<p>Substitute a value for any term that appears within angle brackets. Do not enter angle brackets unless specifically told to do so.</p> <p>Example rm <filename> means that you should type the name of the file you want to delete.</p>
{ }	<p>Braces indicate a required part of a statement. Do not enter the braces.</p> <p>Example {-f <filename>} means you must enter the f parameter followed by a filename.</p>

(Contd) Symbol	Use
[]	<p>Brackets indicate an optional part of a statement. Do not enter the brackets.</p> <p>Example [-f <filename>] means you could type the f parameter followed by a filename, but you are not required to do so.</p>
...	<p>An ellipse indicates that the immediately preceding item can be repeated indefinitely. Do not enter the ellipse.</p> <p>Example -e... means that you can repeat -e with other values.</p>
()	<p>Parentheses should be entered as shown. They are part of the syntax of a statement and are not special symbols.</p> <p>Example (n) means that you should type a number enclosed by parentheses.</p>

Log Files

Log Files and Temporary Files

The directory to which the system directs the temporary files and log files that it produces depends upon the product level and whether you are operating in attended mode or unattended mode.

Workstation level

This table summarizes the location of log files and temporary files for IBM® Sterling Gentran:Server® for UNIX - Workstation.

File Type	Workstation PC
Temporary (temp) files	Wrktmp subdirectory of the path you have configured for User Files on the Set Up Directories dialog box.
Log files	The directory of the path you have configured for Report/Log files on the Set Up Directories dialog box.

System Messages

Contents

- ▶ Overview 2
- ▶ Messages in Numerical Order 4
- ▶ Messages in Alphabetical Order (Starting with Variables) 60
- ▶ Messages in Alphabetical Order (Not Starting with Variables) 64
- ▶ Sterling Gentran:Server Return Codes 95
- ▶ UNIX Error Codes 100
- ▶ DISAM Error Codes 103

Overview

Introduction

This chapter lists the messages you might see while using the Sterling Gentran:Server mapping and translation features.

How messages are organized

The messages in this chapter are listed according to the following guidelines:

- Messages with numbers are listed in numerical order. All others are listed in alphabetical order.
 - Two or more messages with the same number are listed in alphabetical order by the program part. Articles ('a' and 'the') are included in the alphabetization.
 - Variables (surrounded by < >) appear first in the alphabetical list.
-

Information included

This section identifies the information provided in addition to the message text.

Message type

This table describes the types of messages Sterling Gentran:Server displays.

Message Type	Function
Error	Indicates that Sterling Gentran:Server cannot perform this process or has stopped performing the current process.
Warning	Alerts you to a possible problem but allows processing to continue.
Prompt	Elicits additional information that Sterling Gentran:Server needs in order to continue the process.
Informational message	Provides feedback about, or the status of, the process just completed.

Program module

The program module is the part of Sterling Gentran:Server issuing the message. This is obvious in some cases, but not in others. For example, most messages encountered while creating or editing mapping instructions are issued by the compiler.

Explanation

Possible reasons for the error or warning or a detailed discussion of the type of information the message presents.

Procedure

The procedure or response you must follow or give to continue processing and/or ensure the integrity of your data.

Message conventions

Messages may contain variables. Variables are enclosed in angle brackets (< >) and indicate the position of the specific data that prompted Sterling Gentran:Server to display the message.

Example

Input file: <path>\<file name>

The message displays the actual path and name of the file in place of the variables <path> and <file name>.

Messages in Numerical Order

Contents This section lists numerical messages. These messages appear in the *xlcntl.err* file stored in the Sterling Gentran:Server temporary directory.

References

- ▶ To find a message that begins with a variable, see the topic [Messages in Alphabetical Order \(Starting with Variables\)](#) in this chapter.
- ▶ To find a message that begins with an alphanumeric character (neither a number, nor a variable), see the topic [Messages in Alphabetical Order \(Not Starting with Variables\)](#) in this chapter.

000 Record encountered for set in error

TP Code: <TP Code>

Set Id: <Set ID>

Message Type: Warning

Program Module: ediarc

Explanation:

The translator was unable to translate a set because it contained errors. The translator created no output for this set.

Sterling Gentran:Server wrote a record to *edistat.i/edistat.o* indicating the error. The **ediarc** program then read the record and wrote a message to *xlcntl.err* instead of archiving the data.

Procedure:

Use this procedure in response to this message:

Step	Action
1	Look at <i>xlcntl.err</i> to find the set identified by its Trading Partnership Code and Set ID.
2	Determine the nature of the errors, then decide whether the errors warrant retranslating the data.
3	Correct the errors and retranslate the data.

000 Input file: <path>\<file name>
Output file: <path>\<file name>

Message Type: Informational
Program Module: edifrmat

Explanation:

The **edifrmat** program processed the specified input file and wrote the results to the specified output file.

Procedure:

No action is necessary. You can verify that the output file contains the data it should if the circumstances warrant that action.

000 Translated interchanges without errors: <number>
Untranslated interchanges with errors: <number>

Message Type: Informational
Program Module: lftran

Explanation:

This message appears at the end of the *xlcntl.err* file after TRADACOMS translation is complete.

Procedure:

No action is necessary.

001 **Number of document sets archived: <number>**
Number of FA records processed: <number>
Number of records/sets not processed: <number>
Total sets/records: <number>

Message Type: **Informational**
Program Module: **ediarc**

Explanation:
This message provides the results of the **ediarc** command.

Procedure:
Use this procedure in response to this message:

Step	Action	
1	Verify that ediarc was able to archive all document sets.	
2	Check the number of records/sets not processed.	
3	Use this table to determine your next action.	
	IF the number of unprocessed record/sets is...	THEN...
	Zero (0)	Take no further action.
	One (1) or more	1. Review the ediarc error messages for more detailed information on each record/set not archived 2. Review the information on those error messages and the actions you should take.

004 Compliance check error(s):
Message Type: Warning or Error
Program Module: Iftran

Set up notes

If you select the Accept Sets with Errors option on either the Inbound or Outbound Translation Information part of the Trading Partnership Record, the translation continues and disregards the warning.

Also, the **Accept Messages /Sets with error(s)** option on the **Inbound** or **Outbound EDI Information** tab of the **Trading Partnership Editor** must be inactive to prevent Sterling Gentran:Server from accepting or sending sets that contain errors.

Topic organization

There are several errors that prompt Sterling Gentran:Server to display this message. Each error is identified and explained below. Where appropriate, examples are provided. Additional procedures are provided when necessary.

Procedure:

Use one of these responses if you receive this message:

IF...	THEN...
You accept or reject the inbound data and send functional acknowledgements or You accept the inbound data, but do <i>not</i> send functional acknowledgements	Further action is not required. Note Although not required, you should contact your trading partner and ask them to correct the error if you reject the data.
You reject the inbound data and do <i>not</i> send functional acknowledgements	Notify your trading partner of the error and ask them to send a corrected set of data.

(Contd) IF...	THEN...
Your trading partner accepts your outbound data	Further action is not required.
Your trading partner rejects your outbound data,	<p>Follow these steps to correct the data.</p> <ol style="list-style-type: none"> 1. Modify the implementation guide to correct the error 2. Correct the map and compile the new version 3. Translate the data using the new version of the map 4. Send the corrected version to your trading partner.

Error types:

This table describes the different compliance errors. The table also provides examples and specific correction notes where appropriate.

Error	Description
Conditional element missing	<p>The data lacks one or more conditional elements. Conditional elements are dependent on other elements. Conditional elements must be present in the data when the elements requiring them are present.</p> <p>Example An element containing a number is present, but the element specifying whether the number is a telephone number or a fax number is absent.</p> <p>Specific correction Add missing conditional element or mark it used. If you have no data for this element, map a literal, spaces, or zeros.</p>
Element too long	<p>The inbound data contains one or more elements that are longer than the maximum length allowed by the standard, IG, or Sterling Gentran:Server. Sterling Gentran:Server allows a maximum length of 512 characters per element.</p>

(Contd) Error	Description
Element too short	<p>The data contains one or more elements that are shorter than the minimum length required by the standard, IG, or Sterling Gentran:Server.</p> <p>Specific correction Check to see if another message indicates that data was truncated. If no data was truncated, you can send this data. You should correct the IG and map used and compile the map before using it again.</p> <p>If data was truncated, refer to that message in this table for the specific correction.</p>
Exclusion condition violated	<p>The data contains one or more exclusion condition elements even though the specified elements are present. Exclusion condition elements are dependent on other elements. Exclusion condition elements must <i>not</i> be present in the data when the elements requiring their exclusion are present.</p> <p>Example: Two elements specifying a payment currency exist in the data. One element specifies that payment be in American dollars. Another specifies that payment be in British pounds.</p> <p>Specific correction Delete the unnecessary element from the implementation guide.</p>
Invalid character in element	<p>One or more elements contain characters defined as invalid by the standard or IG. Each element in a standard or IG has a required data type. Only certain characters are valid for each data type.</p> <p>Example: Elements with the data types of N and R data types can contain only a plus (+), a minus (-), or a decimal point (.). Any alphabetic character or other symbol is invalid.</p> <p>Specific correction Correct the application data and/or the application description, if necessary</p>
Invalid code	<p>Sterling Gentran:Server found one or more elements with invalid element ID codes in the data. There is a list of allowable element ID codes for each element of type ID Sterling Gentran:Server validated the element ID codes against this list.</p>

(Contd) Error	Description
Invalid date	<p>The data contains one or more elements with data type DT that contain invalid dates.</p> <p>Example The data may include month 14 or day 56 (for non-Julian dates).</p> <p>Note If the source date format is different from the destination date format, Sterling Gentran:Server converts the data.</p>
Invalid time	<p>The data contains one or more elements with data type TM that contain invalid times.</p> <p>Example The data may include Julian day 555.</p> <p>Notes If the source time format is different from the destination time format, Sterling Gentran:Server converts the data.</p>
Mandatory element missing	<p>The data lacks one or more of the mandatory elements required by the standard, or a non-mandatory segment was not activated in the map. Mandatory elements must be present in the data. These are mandatory elements.</p> <p>Specific correction Add missing conditional element or mark it used. If you have no data for this element, map a literal, spaces, or zeros. If you have data, activate the segment or element.</p>
Mandatory loop missing	<p>The data lacks the beginning segment for one or more mandatory loops required by the standard. Mandatory loops must be present in the data.</p> <p>Specific correction Add the missing mandatory loop(s). If you have no data for an element, map a literal, spaces, or zeros.</p>

(Contd) Error	Description
Mandatory segment missing	<p>The data lacks one or more mandatory segments required by the standard. Mandatory segments must be present in the data.</p> <p>Specific correction Add the missing mandatory segments. If you have no data for an element, map a literal, spaces, or zeros.</p>
Too many elements	<p>The data contains one or more segments with too many elements, as defined by the standard. The standard determines which elements each segment can contain.</p> <p>Specific correction For inbound data, compare the map you are using for the translation against the standard you are using. Make sure that your map contains the same number of elements as is required by the standard. If your map is missing elements, add them back.</p> <p>Note Although not required, you should contact your trading partner and ask them to correct the error if you determine that they are sending extra data.</p>

007 Processing segment: <segment>

Message Type: Informational

Program Module: Iftran

Explanation:

This message indicates which segment the translator is processing. Run **Iftran** with the *-d* parameter to write this message to the *xlcntl.err* file.

Note:

When you run **Iftran** with the *-d* parameter, you can read the processing messages in the *xlcntl.err* file to determine on what segment the translation failed.

008 Memory allocation error

Message Type: Error

Program Module: Iftran

Explanation:

There is not enough memory free to continue the translation.

Procedure:

Use this procedure in response to this message:

Step	Action
1	Close all other open applications.
2	Run the translation again.

E020 Incorrect line item count in CTT: Data = <number>, Actual = <number>

Message Type: Warning

Program Module: Iftran

Explanation:

Sterling Gentran:Server found an error in the line item count in the CTT segment.

Note

This error does not stop the translator from completing the translation.

Procedure:

Use one of these responses if you receive this message:

IF...	THEN...
You accept the data	Further action is not required.
You reject the data	Notify your trading partner of the error and ask them to send a corrected data set.
Your trading partner accepts the data	Further action is not required.
Your trading partner rejects the data.	Translate the data again and check the CTT segments. If they are correct, resend the corrected data. If not, correct the map, translate the data, and send the new data to your trading partner.

021 Incorrect hash total in CTT: Data = <number>, Actual = <number>

Message Type: Warning
Program Module: Iftran

Explanation:
 Sterling Gentran:Server has found an error in the hash total in the CTT segment.

Note
 This error does not stop the translator from completing the translation.

Procedure:
 Use one of these responses if you receive this message:

IF...	THEN...
You accept the data	Further action is not required.
You reject the data	Notify your trading partner of the error and ask them to send a corrected data set.
Your trading partner accepts the data	Further action is not required.
Your trading partner rejects the data.	Translate the data again and check the CTT segments. If they are correct, resend the corrected data. If not, correct the map, translate the data, and send the new data to your trading partner.

022 Message # seq error: This message = <control num>, Last message = <control num>

Message Type: Warning
Program Module: Iftran

Explanation:
 Sterling Gentran:Server has found an error in the sequence of set control numbers. The file may contain duplicate data or be incomplete.

This error stops Sterling Gentran:Server from completing the translation only if you use **Iftran** with the S parameter. If the translation stops, Sterling Gentran:Server writes the input data to *boxin.err* when this error occurs.

Procedure:

Use one of these responses if you receive this message:

IF...	THEN...
You accept the inbound data Note You should accept the inbound data only if you are certain it is complete.	<ol style="list-style-type: none"> 1. Find and remove any duplicate data 2. Correct the control numbers 3. Open the Trading Partner Maintenance dialog box. 4. Click the Inbound Translation Information Tab and change the set control number to match the control number of the last set.
You reject the inbound data	Notify your trading partner of the error and ask them to send corrected data.
Your trading partner accepts your outbound data	Further action is not required.
Your trading partner rejects your outbound data	Translate the data again and send the corrected data.

023 Group # seq error: This group = <control num>, Last group = <control num>

Message Type: Warning

Program Module: Iftran

Explanation:

Sterling Gentran:Server has found an error in the sequence of group control numbers. The file may contain duplicate data or be incomplete.

This error stops Sterling Gentran:Server from completing the translation only if you use **Iftran** with the S parameter. If the translation stops, Sterling Gentran:Server writes the input data to *boxin.err* when this error occurs.

Procedure:

Use one of these responses if you receive this message:

IF...	THEN...
You accept the inbound data Note You should accept the inbound data only if you are certain it is complete.	<ol style="list-style-type: none"> 1. Find and remove any duplicate data 2. Correct the control numbers 3. Open the Trading Partner Maintenance dialog box. 4. Click the Inbound Translation Information Tab and change the group control number to match the control number of the last group.
You reject the inbound data	Notify your trading partner of the error and ask them to send corrected data.
Your trading partner accepts your outbound data	Further action is not required.
Your trading partner rejects your outbound data	Translate the data again, then send the corrected data.

024 Interchange # seq error: This interchange = <control num>, Last interchange = <control num>

Message Type: Warning

Program Module: Iftran

Explanation:

Sterling Gentran:Server has found an error in the sequence of set control numbers. The file may contain duplicate data be incomplete.

This error stops Sterling Gentran:Server from completing the translation only if you use **Iftran** with the S parameter. If the translation stops, Sterling Gentran:Server writes the input data to *boxin.err* when this error occurs.

Procedure:

Use one of these responses if you receive this message:

IF...	THEN...
You accept the inbound data Note You should accept the inbound data only if you are certain it is complete.	<ol style="list-style-type: none"> 1. Find and remove any duplicate data 2. Correct the control numbers 3. Open the Trading Partner Maintenance dialog box. 4. Click the Inbound Translation Information Tab and change the interchange control number to match the control number of the last interchange.
You reject the inbound data	Notify your trading partner of the error and ask them to send corrected data.
Your trading partner accepts your outbound data	Further action is not required.

**049 Application data error: <error type>
Output record: <record ID>, Output field: <field name>**

Message Type: Error
Program Module: Iftran

Explanation:

The translator found an error in your application data. A description of the error replaces the <error type> variable shown in the example above. For more information about the second line of the message, refer to error 076.

Procedure:

Use this procedure in response to this message:

Step	Action
1	Check the record and field indicated.
2	Correct the data and/or the data description as necessary.
3	If changes are made, compile the map and translate the data again.

**050 Interchange control number mismatch. ISA12 = <interchange control number>
IEA02 = <interchange control number>**

Message Type: Error
Program Module: Iftran

Explanation:

The ISA Interchange Header segment does not match the control number in the IEA Interchange Trailer segment.

Note

This error may be due to duplicate or missing data.

Procedure:

Use one of these responses if you receive this message:

IF...	THEN...
You accept the inbound data Note You should accept the inbound data only if you are certain it is complete.	1. Find and remove any duplicate data. 2. Manually correct the control numbers.
You reject the inbound data	Notify your trading partner of the error and ask them to send corrected data.

**053 Invalid group count: IEA01 = <number of groups counted>
Actual = <number of groups present> Interchange Control # <control number>**

Message Type: Error
Program Module: Iftran

Explanation:

The inbound translator found an invalid group count.

Note

The translator wrote an error message to *xlcntl.err*, the invalid interchange to *boxin.err*, and did not include the invalid interchange in the output file.

Procedure:

Use this procedure in response to this message:

Step	Action
1	Review the invalid interchanges in the <i>boxin.err</i> file to determine why the group count is invalid.
2	Notify your trading partner of the error and ask them to send corrected data.

**060 Invalid segment count: SE01 = <number of segments counted>
Actual = <number of segments present> Set Control # <set control number>**

Message Type: Error

Program Module: Iftran

Explanation:

The translator found an invalid segment count. The translator wrote an error message to *xlcntl.err*, the invalid group to *boxin.err* or *boxout.err*, and omitted the invalid group from the output file.

Procedure:

Use this procedure in response to this message:

Step	Action	
1	Review the invalid interchanges in the <i>boxin.err</i> or <i>boxout.err</i> file to determine why the segment count is invalid.	
2	Use this table to determine your next action.	
	IF you are translating...	THEN...
	Outbound data	Correct your data and run the translation again.
	Inbound	Notify your trading partner of the error and ask them to send corrected data.

061 '-A' option with invalid .app file = <file name>**Message Type:** Error**Program Module:** Iftran**Explanation:**

The file name entered after the A parameter in the **Iftran** command was invalid. You must enter the name of a valid application file before Sterling Gentran:Server can take the trading partnership code from the application description during multiple outbound translations.

Procedure:

To correct the error, run Iftran again. Use the A parameter and a valid application file name.

062 '-A' option with no TP description, .app file = <file name>**Message Type:** Error**Program Module:** Iftran**Explanation:**

The file name entered after the A parameter in the **Iftran** command selects a file that does not contain a field marked as the Trading Partnership Code. This file must contain a field marked as the Trading Partnership code.

Procedure:

Use this procedure in response to this message:

IF...	THEN...
The application data contains the Trading Partnership Code	<ol style="list-style-type: none"> 1. Open the map and select the Application Editor 2. Mark the field containing the Trading Partnership Code as the TP Code. 3. Save the application description 4. Save the map 5. Compile and translate the new map.
The application data does not contain the Trading Partnership Code	<ol style="list-style-type: none"> 1. Separate the data. Create one file for each separate trading partner. 2. Run Iftran again, using the T parameter to specify the Trading Partnership Code.

063 Put of environment variable <string> failed**Message Type:** Error**Program Module:** Iftran**Explanation:**

Sterling Gentran:Server was unable to map data to this environment variable due to insufficient amount of available memory.

Procedure:

Use this procedure in response to this message:

Step	Action
1	Close other applications that may be running.
2	Run the translation again.

064 Doc specifier error: <string>**Message Type:** Error**Program Module:** Iftran**Explanation:**

One of the values used to create the document specifier number is not available, making it incomplete. Sterling Gentran:Server creates a unique specifier number for each document by concatenating meaningful values. If, for example, the TP code is not attached to the specifier table, the specifier number is invalid.

Procedure:

Use this procedure in response to this message:

Step	Action
1	Return to the document specifier part of Sterling Gentran:Server.
2	Check the document specifier table for this document.
3	Set up or correct that table if necessary.
4	Reprocess the document if necessary.

066 Unexpected record: <first 19 characters of record>, Record number: <record number> Set Number: <set control number> Possible segment out of order. This record will be ignored.

Message Type: Warning
Program Module: Iftran

Explanation:

Sterling Gentran:Server has found a record that it cannot identify. The record either has a record ID that does not match any record in the application description or is a defined record but is not expected in the current sequence. This may be the result of incorrect or missing loop markers. Sterling Gentran:Server does not process incomplete records

This error does not stop the translation process.

Procedure:

Use this procedure in response to this message:

Step	Action
1	Correct the application data and/or the application description using the record number, the set number information, and the first 19 characters of the record.
2	Compile and translate the map again, if necessary.

067 Truncated data in record: <record name>, field: <field name>

Message Type: Warning
Program Module: Iftran

Explanation:

The source item data exceeded the maximum length of the destination item and was truncated to fit. This error does not stop the translation process.

Procedure:

Use one of these responses if you receive this message

IF...	THEN...
<p>You accept or reject the inbound data and send functional acknowledgements or</p> <p>You accept the inbound data, but do <i>not</i> send functional acknowledgements</p>	<p>Further action is not required.</p> <p>Note</p> <p>Although not required, you should contact your trading partner and ask them to correct the error if you reject the data.</p> <p>Also, you can use the mapping operator Place to map the most important part of the source item to the destination.</p>
<p>You reject the inbound data and do <i>not</i> send functional acknowledgements</p>	<p>Notify your trading partner of the error and ask them to send a corrected set of data.</p>
<p>Your trading partner accepts your outbound data</p>	<p>Further action is not required.</p>
<p>Your trading partner rejects your outbound data</p>	<p>Chose one of the following responses:</p> <ul style="list-style-type: none"> ▶ Ask your Trading Partner to modify their application data. ▶ Modify your application data to conform to the maximum length allowed by the standard for the field/element.

068 Failed to allocate Translate Table memory.

Message Type: Error

Program Module: Compiler

Explanation:

The map was compiled for a different platform and Sterling Gentran:Server was unable to use it for translation.

Procedure

To correct the error, compile the map again for the platform on which you will be running the translation.

071 Translate table <table name> contains no mappings

Message Type: Error
Program Module: Compiler

Explanation:

The open map contains no mapped items. A map must have at least one mapped item before the compiler in Sterling Gentran:Server can run.

Procedure:

Use this procedure in response to this message:

Step	Action
1	Run AutoMap or manually map the desired items.
2	Click Tools on the menu bar.
3	Click Compile for Windows/PC or Compile for UNIX on the Tools menu.

072 isrewrite error = <error number>

Message Type: Error
Program Module: Iftran

Explanation:

Sterling Gentran:Server found an error in the index (.idx) part of the Trading Partnership file while attempting to write to one of the trading partner records.

Procedure:

To correct the error, run **dcheck** from the command line or a batch file.

Comment

The command line program **dcheck** checks program or repairs DISAM indexed files. See the chapter *Command Reference* in the *IBM® Sterling Gentran:Server® for UNIX - Workstation Technical Reference Guide* for information about the parameters to use with **dcheck**.

076 Conditioning data for input record: <record ID>, field: <field name>**Message Type: Error****Program Module: Iftran****Explanation:**

The translator encountered an error while evaluating conditional mappings and cannot translate the data. This message identifies the location of the application error by input record ID and field name of the source item and is displayed with error 049, which identifies the error type, the output record ID, and field name.

Procedure:

Use this procedure in response to this message:

Step	Action
1	Review your input data for the record and field specified in the second part of this message pair.
2	Correct the data as necessary.

080 Failed to open file: <file name>**Message Type: Error****Program Module: Iftran****Explanation:**

Sterling Gentran:Server cannot find or open the specified file.

Procedure:

Use this procedure in response to this message:

Step	Action
1	Determine the existence and current location of the file. If the file no longer exists, you must recreate it.
2	Determine whether the file is in the correct location.

(Contd) Step	Action	
3	Use this table to determine your next action.	
	IF the file...	THEN...
	Exists, but the correct directory does not	Create the directory and move the file.
	And the directory both exist, but the file is not in the correct directory	Move the file.
	Has the correct name and is in the correct directory	Check the access permissions for the file and directory and change them as needed.

100 Removed <number> interchange envelope(s)**Sender Interchange ID:**<Interchange ID>**Receiver Interchange ID:**<Interchange ID>**New Filename:** <file name>**Message Type:** Informational**Program Module:** envelope**Explanation:**

Sterling Gentran: Server enveloped copies of the existing interchange envelopes into a single file. The program then removed the original interchange envelopes.

Procedure:

No action needed.

100 Possible header <header name> near <offset> rejected because:**<reason for rejection>****<May have been newline terminated; but stripped with -l>****Message Type:** Error**Program Module:** edifrmat**Explanation:**

The **edifrmat** program could not process the header identified (<header name>) for the reason described (<reason for rejection>). The **edifrmat** program put the header into *edifrmat.not* and omitted it from the output file.

Procedure:

If this message includes the statement, "May have been newline terminated; but stripped with -l", run **edifrmat** again without using the 'l' parameter.

Note

If the standard version is EDIFACT, the message will read "Defined Terminator <terminator> could not be found." This means your trading partner used an invalid terminator. Other possible messages include:

1. "Separator and Terminator are the same character"
2. "Separator, Sub-separator or Terminator is invalid"

Notify your trading partner and ask them to send corrected data.

101 Records in input file <file name> are not newline terminated

Message Type: Error

Program Module: Iftran

Explanation:

Sterling Gentran:Server found a record that was not newline terminated during translation as required. The translation process stopped at the set containing the error. All data successfully translated was written to the output file.

Procedure:

Use this procedure in response to this message:

IF...	THEN...
You are translating inbound data	<ol style="list-style-type: none"> 1. Delete the sets that were translated from the input file 2. Run edifrm on the data 3. Run the translation again.
You are translating outbound data	<ol style="list-style-type: none"> 1. Delete the output file 2. Edit the input file (flat file or application description file) and put new line characters at the end of each record 3. Run the translation again.

**102 Max Occurrence for segment <segment name> exceeded
at file line # <line number>
Set Control # <set control number>**

Message Type: Warning or Error
Program Module: Iftran

Explanation:

The EDI data includes more of the identified segments (<segment name>) than are permitted by the standard used. The program identifies the number of the line in the file that contains the first occurrence of the segment that exceeds the maximum number of occurrences allowed.

Set up notes

If you select the Accept Sets with Errors option on either the Inbound or Outbound Translation Information part of the Trading Partnership Record, the translation continues and disregards the warning.

Also, the **Accept Messages /Sets with error(s)** option on the **Inbound** or **Outbound EDI Information** tab of the **Trading Partnership Editor** must be inactive to prevent Sterling Gentran:Server from accepting or sending sets that contain errors.

Procedure:

Use one of these responses if you receive this message:

IF...	THEN...
You accept or reject the inbound data and send functional acknowledgements or You accept the inbound data, but do <i>not</i> send functional acknowledgements	Further action is not required. Note Although not required, you should contact your trading partner and ask them to correct the error if you reject the data.
You reject the inbound data and do <i>not</i> send functional acknowledgements	Notify your trading partner of the error and ask them to send a corrected set of data.

(Contd) IF...	THEN...
Your trading partner accepts your outbound data	Further action is not required.
Your trading partner rejects your outbound data,	Follow these steps to correct the data. <ol style="list-style-type: none"> 1. Modify the implementation guide to correct the error 2. Correct the map and compile the new version 3. Translate the data using the new version of the map 4. Send the corrected version to your trading partner.

103 Segment failed conditional element compliance check:
<segment name> <segment number>
Rule: <conditional element rule>

Message Type: Warning or Error
Program Module: Iftran

Explanation:

The data contains one or more elements that violate a conditional element rule included in the standard used.

Set up notes

If you select the Accept Sets with Errors option on either the Inbound or Outbound Translation Information part of the Trading Partnership Record, the translation continues and disregards the warning.

Also, the **Accept Messages /Sets with error(s)** option on the **Inbound** or **Outbound EDI Information** tab of the **Trading Partnership Editor** must be inactive to prevent Sterling Gentran:Server from accepting or sending sets that contain errors.

Procedure:

Use one of these responses if you receive this message:

IF...	THEN...
<p>You accept or reject the inbound data and send functional acknowledgements or</p> <p>You accept the inbound data, but do <i>not</i> send functional acknowledgements</p>	<p>Further action is not required.</p> <p>Note Although not required, you should contact your trading partner and ask them to correct the error if you reject the data.</p>
<p>You reject the inbound data and do <i>not</i> send functional acknowledgements</p>	<p>Notify your trading partner of the error and ask them to send corrected data.</p>
<p>Your trading partner accepts your outbound data</p>	<p>Further action is not required.</p>
<p>Your trading partner rejects your outbound data,</p>	<p>Follow these steps to correct the data.</p> <ol style="list-style-type: none"> 1. Modify the implementation guide to correct the error 2. Correct the map and compile the new version 3. Translate the data using the new version of the map 4. Send the corrected version to your trading partner.

107 Error: <message version> is not a valid message version for standard version <standard version>

Message Type: Error
Program Module: Iftran

Explanation:

The message version for the TRADACOMS trailer documents is not valid for this interchange.

Procedure:

Notify your trading partner of the problem and ask them to send corrected data.

126 EDI data not found.
Any data found in input file is in temporary file <path>ledifrmat.not
Message Type: Error
Program Module: edifrmat

Explanation:

The **edifrmat** program could not find any EDI data in the input file. The **edifrmat** processes only EDI data and writes all other data into *edifrmat.not*. The message provides the location of this file <path>.

Procedure:

Use this procedure in response to this message:

Step	Action	
1	Read the <i>edifrmat.not</i> file to see what data the input file contains.	
2	Use this table to determine your next action.	
	IF you specified...	THEN...
	An incorrect name and/or path for the input file	Run edifrmat again, specifying the correct file name and path.
The correct name of the file sent by your trading partner	Contact your trading partner and ask them to send you a file containing the valid EDI data.	

180 Failed to open file: <EDI file name>
Tpcode: <TP Code> Interchange Ctl No: <control num>
Group Ctl No: <control num> Set Ctl No: <control num>
This set will NOT be archived

Message Type: Error
Program Module: ediarc

Explanation:
 Sterling Gentran:Server was unable to open the specified file <EDI file name>. This error prevents Sterling Gentran:Server from archiving the specified set.

Procedure:
 Use one of these responses if you receive this message

IF...	THEN...
You used a batch file or script to translate data	Follow these steps: <ol style="list-style-type: none"> a. Correct the file name and directory path b. Delete the temporary Audit File c. Run the translation and archive process again.
You specified an incorrect file name and/or directory path	Follow these steps: <ol style="list-style-type: none"> a. Verify that the file exists and is correctly named. b. Verify that the file is stored in the directory specified. c. Change the name and/or location of the file and directory if necessary.
The file has the correct name and is in the correct directory	Check the permissions for the file and directory, changing those as necessary.

**180 Failed to open file: <.cnd file name>
No conditional element compliance will be performed**

Message Type: Error
Program Module: Iftran

Explanation:

Sterling Gentran:Server was unable open the specified file <.cnd file name>, containing the standard's rules for conditional elements. This prevents Sterling Gentran:Server from checking conditional element compliance.

Procedure:

Use this procedure in response to this message:

Step	Action	
1	View the Setup Directories dialog box to determine the name of the directory in which the standards files are stored.	
2	Locate the <i>.cnd</i> file for the standard you are using.	
3	Use this table to determine your next action.	
	IF the <i>.cnd</i> file...	THEN...
	Exists, but is in the wrong directory	Relocate the <i>.cnd</i> file.
	Exists and is in the correct directory	Check the permissions for the directory and change them if necessary. Note Sterling Gentran:Server must have read permissions for the file.
	Does not exist	Copy the files for the standard into the directory which your standards files are located. Note You may need to reload the required files from the original installation disk or tape.

180 Failed to open file: msgreco.vda**Message Type:** Error**Program Module:** edifrmnt**Explanation:**

Sterling Gentran:Server cannot find or open the specified file. This file is necessary for the VDA standard.

Procedure:

Use this procedure in response to this message:

Step	Action	
1	Determine the existence and current location of the file. If the file no longer exists, you must recreate it.	
2	Determine whether the file is in the correct location.	
3	Use this table to determine your next action.	
	IF the file...	THEN...
	Exists, but the correct directory does not	Create the directory and move the file.
	And the directory both exist, but the file is not in the correct directory	Move the file.
	Has the correct name and is in the correct directory	Check the access permissions for the file and directory and change them as needed.

182 Failed to write: <audit file name>**Disam error message****Tpcode:** <TP Code> **Interchange Ctl No:** <control num>**Group Ctl No:** <control num> **Set Ctl No:** <control num>**Message Type:** Error**Program Module:** ediarc**Explanation:**

Sterling Gentran:Server was unable to write the Audit File specified.

Procedure:

Use this procedure in response to this message:

Step	Action	
1	Check the Audit File to see if it contains duplicate data or a duplicate set control number.	
2	Use this table to determine your next action.	
	IF this is...	THEN...
	Duplicate data	Determine whether you want to process the duplicate data. Then, continue or stop the process based on that determination.
	A duplicate set control number	Ask your trading partner to resend the data using a unique set control number.
Not duplicate data and has a unique set control number	<p>1. Check the available free space on the disk containing the directories in which you hold local central audit files.</p> <p>It may be necessary to delete files to make more disk space available.</p> <p>2. Check the permissions of your audit directory and files.</p> <p>It may be necessary to change the existing permissions.</p>	

190 Control Codes do not match in file: <EDI file name>
Tpcode: <TP Code> Interchange Ctl No: <control num>
Group Ctl No: <control num> Set Ctl No: <control num>
This set will NOT be archived
Extracted IC Control #: <control num>
Extracted Group Control #: <control num>
Extracted Set Control #: <control num>
Message Type: Error
Program Module: ediarc

Explanation:

Sterling Gentran:Server attempted to locate a specific set but found one with a different group of control numbers. The program could not archive the set referred to in the audit record and wrote a message in the *xlcntl.err* file.

The output file may have been overwritten with new data before it was archived or the archive process may have been unsuccessful.

Procedure:

Use this procedure in response to this message:

Step	Action
1	Remove the temporary Audit files and the output file.
2	Translate the data again and archive it immediately. You should archive immediately after each successful translation.

**200 Missing set header: File: <file name> Offset: <number>
Tpcode: <TP Code> Interchange Ctl No: <control num>
Group Ctl No: <control num> Set Ctl No: <control num>
This set will NOT be archived
Message Type: Error
Program Module: ediarc**

Explanation:

Sterling Gentran:Server found a set in the data that does not have a set header. This EDI data is invalid.

Procedure:

Use this procedure in response to this message:

Step	Action	
1	Locate the set with the missing header using the Trading Partnership Code and control numbers provided.	
2	Use this table to determine your next action.	
	IF you are archiving...	THEN...
	Outbound data	1. Check to see if the set header is mapped and the mapping instructions are correct 2. Translate the new data.
	Inbound data	Ask your trading partner for corrected data, then translate the new data.

**200 Error occurred reading Interchange Org record for <TP Code>
disam error message****Control number not updated at this level****Message Type: Error****Program Module: envelope****Explanation:**

Sterling Gentran:Server was unable to read the Interchange Organization record for this Trading Partnership Code and did not update the interchange control number. This error can occur for several reasons:

- ▶ The Organization file does not include an Organization record for the Trading Partnership Code identified in the message.
- ▶ The Organization file does not exist.
- ▶ The Organization file is empty.
- ▶ The Organization file is in use by another user.
- ▶ The Organization file is not located in the correct directory.
- ▶ Sterling Gentran:Server does not have read permissions for the directory and file.

Procedure

Use this procedure in response to this message:

Step	Action
1	Determine the reason for the error.
2	Correct, translate, and send the data again.

**200 Error occurred rewriting Interchange Organization record
disam error message**

Control number not updated at this level

Message Type: Error

Program Module: envelope

Explanation:

Sterling Gentran:Server was unable to rewrite the Interchange Organization record for this Trading Partnership Code and did not update the interchange control number. This error can occur for several reasons:

- ▶ The Organization file is in use by another user.
- ▶ The Organization file is not located in the correct directory.
- ▶ Sterling Gentran:Server does not have read permissions for the directory and file?

Procedure:

Use one of these responses if you receive this message.

IF you are in a...	THEN...
UNIX multi-user environment	Wait, then run the process again.
Single-user environment or are sure that the file is unlocked	1. Check the amount of disk space available on the disk holding Trading Partnership files. 2. Check the permissions of the Organization File and the directory holding Trading Partnership files.

200 Error updating interchange control number In trading partner record for:**<TP Code>****disam error message****Message Type: Error****Program Module: envelope****Explanation:**

Sterling Gentran:Server was unable to update the interchange control number in a record for this Trading Partnership code. This error can occur for several reasons:

- ▶ The Organization file is in use by another user.
- ▶ The Organization file is not located in the correct directory.
- ▶ Sterling Gentran:Server does not have read permissions for the directory and file.

Procedure:

Use one of these responses if you receive this message

IF you are in a...	THEN...
UNIX multi-user environment	Wait, then run the process again.
Single-user environment or are sure that the file is unlocked	<ol style="list-style-type: none"> 1. Check the amount of disk space left on the disk holding Trading Partnership files. 2. Check the permissions of the Organization File and the directory holding Trading Partnership files.

200 File containing data is already an enveloped file <file name>**This data will not be processed****Message Type: Warning****Program Module: envelope****Explanation:**

Sterling Gentran:Server will not process previously enveloped data.

Procedure:

No action necessary.

200 Encountered segment too long to process near offset <offset number>. Possibly segment terminator different than interchange header
 Data written to *edifmat.not*
 Output file may contain incomplete interchange
Message Type: Error
Program Module: *edifmat*

Explanation:

The segment is more than 1024 characters in length. Sterling Gentran:Server wrote the partial interchange to *edifmat.not* and omitted the partial interchange from the output file.

Procedure:

Use this procedure in response to this message:

Step	Action	
1	Check the <i>edifmat.not</i> file to see if an interchange trailer is missing or if a segment terminator differs from the previous terminator.	
2	Use this table to determine your next action.	
	IF...	THEN ask you trading partner to...
	An interchange trailer is missing	Resend the data, including the missing interchange trailer.
Different segment terminators were used in a single interchange	Use the same delimiter for all segment terminators within an interchange.	

-
- 243 Audit record not found.**
I_Send: <number> I_Recv: <number>
G_Send: <number> G_Recv: <number>
Interchange Ctl No: <control num> Group Ctl No: <control num>
Set Ctl No: <control num> Setid: <Set ID>
FA status not updated
Message Type: Warning
Program Module: ediarc
- Explanation:**
Sterling Gentran:Server was unable to find the Audit record identified by the message. Sterling Gentran:Server was unable to reconcile this acknowledgment to the original document because the original document was not archived or the archive file was purged.
- Procedure:**
Use one of these responses if you receive this message
- ▶ Translate both the original document and the functional acknowledgment again. You must archive the original document and reconcile the functional acknowledgment before you purge the archive file.
 - ▶ Enter Verbal OK for it in the **FA Reconciliation** dialog box to manually reconcile the functional acknowledgment.

-
- 247 Audit record update failed for trading partner: <TP Code>**
<DISAM error message>
Group Ctl No: <control num> Setid: <Set ID> Set Ctl No: <control num>
Message Type: Error
Program Module: ediarc

Explanation:
Sterling Gentran:Server was unable to update the Audit record for the Trading Partnership and set identified in the message. The DISAM error message included in this message indicates the nature of the error.

Procedure:
Use one of these responses if you receive this message.

IF...	THEN...
You are in a UNIX multi-user environment	Wait, then run the process again.
You are in a single-user environment or know that no other user has the file open for reading or writing	Check the amount of disk space left on the disk holding Trading Partnership files.

(Contd) IF...	THEN...
There is sufficient disk space	Check the permissions for the file and directory.
There is missing data in the set and group level control numbers	Correct the data and run the translation again, then update the audit record.

**285 Unexpected end of file: <segment>
<file name>**

Message Type: Error
Program Module: ediarc

Explanation:

Sterling Gentran:Server found that the file ended immediately after or in the middle of the segment identified in the message. The EDI data lacks set, group, and interchange trailers and is invalid.

Procedure:

Use this procedure in response to this message:

Step	Action	
1	View the file using a text editor and determine whether the segment identified had a segment terminator.	
2	Use the Trading Partnership Code to identify the trading partner with whom you are exchanging this data.	
3	Use this table to determine your next action.	
	IF you are translating...	THEN...
	Outbound data	Correct the problem and translate the data again.
	Inbound data	Ask your trading partner to check the EDI file and, if complete, send it again. Your trading partner may need to retranslate the data first.

-
- 300** **Could not find set in indicated file**
Failed to seek to position <file offset> in file <input file name>
The indicated file offset was invalid
- Message Type:** **Warning**
Program Module: **envelope**
- Explanation:**
Sterling Gentran:Server was unable find the set at the offset indicated because the file is too small. This error can occur if the file was moved or overwritten after translation.
- Procedure:**
No action possible. You must envelope your sets immediately after translation to avoid this error.
-
- 300** **Error <error number> reading edistat.o during update process**
Archived set will not reflect new envelope
- Message Type:** **Warning**
Program Module: **envelope**
- Explanation:**
Sterling Gentran:Server is unable read the *edistat.o* file or update the original file. The records in the *edistat.o* file still point to the original file, preventing Sterling Gentran:Server from placing the new envelope into the archive.
- Procedure:**
To find the meaning of the error number referenced in this message, see the *Command Reference* chapter in the *IBM® Sterling Gentran:Server® for UNIX - Workstation Technical Reference Guide*.
-
- 300** **Error <error number> returned from encreate.**
Unable to create files env.dat, env.idx
- Message Type:** **Error**
Program Module: **envelope**
- Explanation:**
Sterling Gentran:Server is unable to create the envelope files (*env.dat* and *env.idx*).
- Procedure:**
To find the meaning of the error number referenced in this message, see the *Command Reference* chapter in the *IBM® Sterling Gentran:Server® for UNIX - Workstation Technical Reference Guide*.

300 Error <error number> writing edistat.o during update process**Archived set will not reflect new envelope****Message Type: Warning****Program Module: envelope****Explanation:**

Sterling Gentran:Server is unable read the *edistat.o* file or update the original file. The records in the *edistat.o* file still point to the original file, preventing Sterling Gentran:Server from placing the new envelope into the archive.

Procedure:

Find the meaning of the error number referenced in this message in the *Command Reference* chapter in the *IBM® Sterling Gentran:Server® for UNIX - Workstation Technical Reference Guide*.

300 Error occurred rewriting envelope record**disam error message****Tpid = <TP Code>, Fname = <file name>****Offset in edistat.o will be incorrect****Message Type: Error****Program Module: envelope****Explanation:**

Sterling Gentran:Server is unable rewrite the envelope record. The set offset in *edistat.o* is now incorrect and, possibly, the set was not properly archived.

Procedure:

Use one of these responses if you receive this message.

IF you are in a...	THEN...
UNIX multi-user environment	Wait, then run the process again.
Single-user environment or are sure that no other user has the file locked	<ol style="list-style-type: none"> 1. Check the amount of available disk space. 2. Check the permissions of the <i>edistat.o</i> file and directory.

300 Error writing data to env.dat**disam error message****Message Type: Error****Program Module: envelope****Explanation:**

Sterling Gentran:Server cannot write the *env.dat* file.

Procedure:

Use one of these responses if you receive this message

IF you are in a...	THEN...
UNIX multi-user environment	Wait, then run the process again.
Single-user environment or are sure that no other user has the file locked	1. Check the amount of disk space left on the disk containing the output file. 2. Check the permissions of the output file and the directory holding it.

**300 No data in / or unable to read edistat.o
errno = <error number>**

Message Type: Warning
Program Module: envelope

Explanation:

Sterling Gentran:Server is unable to read any data from the *edistat.o* file.

Procedure:

Use this procedure in response to this message:

Step	Action	
1	Find the meaning of the error number referenced in this message in the <i>Command Reference</i> chapter in the <i>IBM® Sterling Gentran:Server® for UNIX - Workstation Technical Reference Guide</i> .	
2	Use this table to determine your next step.	
	IF...	THEN...
	There is no data to be enveloped or the file is empty	No further action is possible.
	Sterling Gentran:Server is unable to open the file	Verify that the file exists and is in the correct directory.
	Sterling Gentran:Server cannot read or write to the file	Check the permissions on the file and the directory containing it.

343 Audit record not found. Edistat.o not created for resend data.**Audit record for original data was not found.****Message Type: Warning****Program Module: edirsnd****Explanation:**

Sterling Gentran:Server was unable to find the original Archive record and did not archive the resend data as a result. The original record may have been deleted, moved, or purged before archiving. Alternatively, the file may not exist in the specified directory or Sterling Gentran:Server may not have the correct permissions for the file or the directory.

Procedure:

Use one of these responses if you receive this message

- ▶ Translate both the original document and the functional acknowledgment again. You must archive the original document and reconcile the functional acknowledgment before you purge the archive file.
- ▶ Enter Verbal OK for it in the **FA Reconciliation** dialog box to manually reconcile the functional acknowledgment.

346 Trading partner record not found. <TP Code>**Unable to update control number <control num>****Message Type: Warning****Program Module: envelope****Explanation:**

Sterling Gentran:Server was unable to locate the Trading Partnership record identified in the message and did not update the control number. Either the record does not exist or it is not in the correct directory.

Procedure:

Use this procedure in response to this message:

Step	Action
1	Use the File Manager to see if the record exists and whether or not it is in the directory you specified for trading partner files.

(Contd) Step	Action	
2	Use this table to determine your next action.	
	IF the file...	THEN...
	Is in the wrong directory	1. Move it to the correct directory. 2. Manually update the interchange control number in the Trading Partnership Maintenance and/or Organization File(s).
	Does not exist	Recreate the record.

**361 Invalid set count: Data = <number of sets counted>
Actual = <number of sets present>
Invalid set's control number: <control number>
Message Type: Error
Program Module: edifmat**

Explanation:

This interchange contains a number of sets unequal to the set count segment. You used the **edifmat** program with the 'v' parameter, causing the program to write an error message to *xlcntl.err*, write the erroneous group to *edifmat.not*, and omit the erroneous group from the output file.

Procedure:

Use one of these responses if you receive this message

- Ask your trading partner to correct the data and resend it.
- Manually correct the data yourself.

**362 Invalid group count: Data = <number of groups counted>
Actual = <number of groups present>
Invalid group's control number: <control number>
Message Type: Error
Program Module: edifmat**

Explanation:

This interchange contains a number of groups unequal to the number specified by the interchange trailer. Using the **edifmat** program with the 'v' parameter, caused the program to write an error message to *xlcntl.err*, write the erroneous interchange to *edifmat.not*, and omit the erroneous interchange from the output file.

Procedure:

Use one of these responses if you receive this message

IF translation is...	THEN...
Outbound	Correct the application data and retranslate
Inbound	Ask your trading partner to correct the application data, translate the new data, and send the new data to you.

364 Interchange Organization record not found.
Your Interchange ID: <your Interchange ID>
Partner's Interchange ID: <partner's Interchange ID>

Message Type: Error
Program Module: edirsnd

Explanation:

Sterling Gentran:Server found a mismatch between the Interchange IDs in the Interchange Organization record and the Interchange IDs used in the resend. Sterling Gentran:Server is unable to resend the corrected data.

Procedure:

Use this procedure in response to this message:

Step	Action
1	Check the Interchange Organization record.
2	Send the data again, using the Interchange IDs found in the Interchange Organization record.

365 Group Organization Record not found.
Your Interchange ID: <your Interchange ID>
Partner's Interchange ID: <partner's Interchange ID>
Your Application ID: <your Group ID>
Partner's Application ID: <partner's Group ID>

Message Type: Error
Program Module: edirsnd

Explanation:

Sterling Gentran:Server found a mismatch between the Group IDs in the Group Organization record and the Group IDs used in the resend. Sterling Gentran:Server is unable to resend the corrected data.

Procedure:

Use this procedure in response to this message:

Step	Action
1	Check the Group Organization record.
2	Resend the data, using the Group IDs found in the Group Organization record.

370 Organization record locked:
<Organization record data>

Message Type: Error
Program Module: lftran

Explanation:

One or more of the documents in the input file references an organization record that is locked. The message identifies the locked record by displaying your Interchange ID, your partner's Interchange ID, your application ID, and your partner's application ID in place of the variable <Organization record data>.

Procedure:

To correct this error, wait until the record is unlocked and run the translation again.

Note

Sterling Gentran:Server writes inbound data requiring the locked record to *boxin.lok* and the outbound data to *boxout.lok*.

370 Trading Partnership locked:
<Trading Partnership data>

Message Type: Error
Program Module: Iftran

Explanation:

One or more of the documents in the input file references a Trading Partnership record that is locked.

Note

Sterling Gentran:Server uses your Interchange ID, your partner's Interchange ID, your Group ID, your partner's Group ID, the standard version and release, and the Message ID to identify a Trading Partnership record in inbound data.

Sterling Gentran:Server uses the Trading Partnership Code to identify the Trading Partnership record in outbound data.

Procedure:

To correct this error, wait until the record is unlocked and run the translation again.

Note

Sterling Gentran:Server writes inbound data requiring the locked record to *boxin.lok* and the outbound data to *boxout.lok*.

370 Trading partnership not defined for:
<Trading Partnership data>

Message Type: Error
Program Module: Iftran

Explanation:

One or more of the documents in the input file does not reference a Trading Partnership record. Sterling Gentran:Server is unable to continue the translation.

Note

Sterling Gentran:Server uses key fields (your Interchange ID, your partner's Interchange ID, your Group ID, your partner's Group ID, the standard version and release, and the Message ID) to identify a Trading Partnership record in inbound data.

Sterling Gentran:Server uses the Trading Partnership Code to identify the Trading Partnership record in outbound data.

Procedure:

Use one of these responses if you receive this message.

IF translation is...	THEN...
Inbound	<p>Verify that the Trading Partnership Record you have set up contains the same six key fields as specified in the error message.</p> <p>If not, change the data in the six key fields of the Trading Partnership record or ask your trading partner to correct and resend data.</p>
Outbound	<p>Revise the application data and/or the map so that the correct Trading Partnership Code appears in the first record of the file. Translate and send the data again.</p>

**377 Interchange contains count errors
Interchange written to edifmat.not**

Message Type: Error
Program Module: edifmat

Explanation:

The input file contains a number of sets unequal to the set count segment, or it contains a number of groups unequal to the number specified by the interchange trailer. See error message [361](#) or error message [362](#) for more information.

Procedure:

Use this procedure in response to this message:

Step	Action
1	Check the input file for erroneous group or set counts.
2	Ask your trading partner to correct the data and resend it.
3	Run edifmat again when you receive the corrected data.

377 Interchange contains segment with id too long
Segment Number: <segment number>
Interchange written to edifmat.not

Message Type: Error
Program Module: edifmat

Explanation:

The input file includes a segment ID that is greater than three characters in length. The **edifmat** program expects all segment IDs to be either two or three characters long.

Procedure:

Use this procedure in response to this message:

Step	Action
1	Check the input file for a segment ID that is not within the allowed character length.
2	Ask your trading partner to correct the length of all segment IDs that are less than two or greater than three characters in length and resend the data.
3	Run edifmat again when you receive the corrected data.

378 Interchange contains invalid characters
Interchange written to edifmat.not

Message Type: Error
Program Module: edifmat

Explanation:

The input file contains characters that are not valid for the standard being used.

Procedure:

Use this procedure in response to this message:

Step	Action
1	Check the input file for invalid characters for the standard.
2	Contact your trading partner and ask them to correct the data and resend it.
3	Run edifmat again when you receive the corrected data.

**379 Interchange has no trailer!!!
Interchange written to edifrmfmat.not**

Message Type: Error
Program Module: edifrmfmat

Explanation:

The interchange trailer is missing. The **edifrmfmat** program was unable to process the interchange. The program wrote the partial interchange to *edifrmfmat.not* and omitted the partial interchange from the output file.

Procedure:

Use this procedure in response to this message:

Step	Action
1	Check the <i>edifrmfmat.not</i> file to determine how much data is missing.
2	Contact your trading partner and ask them to send the corrected data.

380 Failed to open file: <file name>

Message Type: Warning
Program Module: ediarc

Explanation:

Sterling Gentran:Server cannot open the identified file (<file name>). The file may be locked by another user; Sterling Gentran:Server may not have write permissions for the file and/or directory; or the disk containing the directory may be full.

Procedure:

Use one of these responses if you receive this message:

IF you are in a...	THEN...
UNIX multi-user environment	Wait, then run the process again.
Single-user environment or are sure that no other user has the file locked	<ol style="list-style-type: none"> 1. Open your Setup Directories dialog box and identify the directories that hold the local and central audit files. 2. Check those directories to see if the identified file exists. <ul style="list-style-type: none"> ▶ If the file exists, check the read permissions on the file and directory ▶ If the file does <i>not</i> exist, translate your data again.

380 Failed to open file: <file name>

Message Type: Error

Program Module: edifmat

Explanation:

The **edifmat** program was unable to open the file. The file may be locked by another user; Sterling Gentran:Server may not have write permissions for the file and/or directory; or the disk containing the directory may be full.

Procedure:

Use this procedure in response to this message:

Step	Action
1	Check the directory path and name of the file you specified.

(Contd) Step	Action	
2	Use this table to determine your next action.	
	IF...	THEN...
	You specified the correct file name and directory path	1. Use File Manager to determine whether the file exists and is in the specified directory. 2. Rename or move the file as needed.
	The file has the correct name and is in the correct directory	Check the permissions and change them if necessary.

**380 Failed to open translate table file: <file name>
TP Code: <TP Code>**

Message Type: Error
Program Module: Iftran

Explanation:

Sterling Gentran:Server was unable to open the map table for a map referenced by one or more of the sets in the input file. The file may be locked by another user; Sterling Gentran:Server may not have write permissions for the file and/or directory; or the disk containing the directory may be full.

Procedure:

Use this procedure in response to this message:

Step	Action
1	Identify the name of the directory in which you store your Map files using the Setup Directories dialog box found under Settings on the Sterling Gentran:Server window.
2	Use File Manager to determine whether the directory exists and whether the file (<mapname>.TPL/TBL) is in the correct directory.

(Contd) Step	Action	
3	Use this table to determine your next step.	
	IF the...	THEN...
	Map directory does <i>not</i> exist	Create the map directory and move the file into it.
	Table file does <i>not</i> exist	Compile the Map file (.map) again to create a new Map table (.TPL/.tbl).
	File exists and is in the correct directory	Check the read permissions on the file and directory. Change them as necessary.

380 Unable to open TP File

Message Type: Error
Program Module: Iftran

Explanation:

Sterling Gentran:Server was unable to open the Trading Partnership File. This may be because there is no Trading Partnership File at all, because the Trading Partnership File is not in the directory specified for Trading Partnership files, or because Sterling Gentran:Server does not have the correct permissions for the file or the directory.

Procedure:

Use this procedure in response to this message:

Step	Action
1	Identify the name of the directory in which you store your Map files using the Setup Directories dialog box found under Settings on the Sterling Gentran:Server window.

(Contd) Step	Action	
2	Use this table to determine your next action.	
	IF the...	THEN...
	Directory is correct	Use File Manager to check the directory for the Trading Partnership file (<i>tp.dat/tp.idx</i>).
File exists	<ol style="list-style-type: none"> 1. Check the permissions of both the file and the directory. 2. Change the permissions, if necessary. 	

382 Failed to write: <archive file name>
Message Type: Warning
Program Module: ediarc

Explanation:

Sterling Gentran:Server did not write the Archive file. The file may be locked by another user; Sterling Gentran:Server may not have write permissions for the file and/or directory; or the disk containing the directory may be full.

Procedure:

Use one of these responses if you receive this message

IF you are in a...	THEN...
UNIX multi-user environment	Wait, then run the process again.
Single-user environment or are sure that no other user has the file locked	Check the amount of available disk space on the disk holding temporary files. Free more as needed
You are sure the file is not locked and there is sufficient disk space	Check the permissions of the Archive file and the directory holding temporary files. Change permissions as needed.

382 **Failed to write: <file name>**
Message Type: **Warning**
Program Module: **edifrmfmat**

Explanation:

Sterling Gentran:Server did not write the specified file. The file may be locked by another user; Sterling Gentran:Server may not have write permissions for the file and/or directory; or the disk containing the directory may be full.

Procedure:

Use one of these responses if you receive this message

IF you are in a...	THEN...
UNIX multi-user environment	Wait, then run the process again.
Single-user environment or are sure that no other user has the file locked	Check the amount of available disk space on the disk holding temporary files. Free more as needed
You are sure the file is not locked and there is sufficient disk space	Check the permissions of the Archive file and the directory holding temporary files. Change permissions as needed.

387 **Invalid segment id encountered: <segment ID>**
Segment Number: **<segment number>**
Interchange written to edifrmfmat.not

Message Type: **Error**
Program Module: **edifrmfmat**

Explanation:

The input file includes a segment ID that is less than two or greater than three characters in length. The **edifrmfmat** program expects all segment IDs to be either two or three characters long.

Procedure:

Use this procedure in response to this message:

Step	Action
1	Check the input file for a segment ID that is not within the allowed character length.
2	Ask your trading partner to correct the length of all segment IDs that are less than two or greater than three characters in length and resend the data.
3	Run edifmat again when you receive the corrected data.

387 Error <operating system error number> updating Interchange Organization record

DISAM error number: <DISAM error number>

Message Type: Error

Program Module: Iftran

Explanation

One or more of the documents in the file references a Trading Partnership record associated with a locked Interchange Organization record. Control Numbers Globally Maintained is selected.

Procedure:

To correct this error, wait until the record is unlocked and run the translation again.

Note

Sterling Gentran:Server writes inbound data requiring the locked record to *boxin.lok* and the outbound data to *boxout.lok*.

388 Error <operating system error number> updating Group Organization record

DISAM error number: <DISAM error number>

Message Type: Error

Program Module: Iftran

Explanation:

One or more of the documents in the file references a Trading Partnership record associated with a locked Group Organization record. Control Numbers Globally Maintained is selected.

Procedure:

To correct this error, wait until the record is unlocked and run the translation again.

Note

Sterling Gentran:Server writes inbound data requiring the locked record to *boxin.lock* and the outbound data to *boxout.lock*.

500 Unexpected version of audit file, running wrong lftran. Exiting without archiving.

Message Type: Error
Program Module: ediarc

Explanation:

The **ediarc** command is unable to archive an audit file created by a prior version of Sterling Gentran:Server. **ediarc** exits without affecting the audit files.

Procedure:

Run the translator again using version 5.4 or higher of Sterling Gentran:Server.

Messages in Alphabetical Order (Starting with Variables)

Overview This section lists messages that begin with variables. The messages are listed in alphabetical order by variable description. Descriptions of variables are surrounded by < >.

References

- To find a message that begins with a number, see the topic [Messages in Numerical Order](#) in this chapter.
- If you want to find a message that begins with an alphabetic character (neither a number, nor a variable), see the topic [Messages in Alphabetical Order \(Not Starting with Variables\)](#) in this chapter.

<argument> **<argument> is not a valid argument for the operation <operation>.**

Message Type: Error
Program Module: Compiler

Explanation:
The compiler is unable to accept the argument entered for this operation.

Procedure:
Change the mapping instruction so that it contains a valid arguments.

Reference
See the *IBM® Sterling Gentran:Server® for UNIX - Workstation Mapping and Translation Guide* for information about appropriate arguments for the identified operation (<operation>).

<expression> **<expression> is not a valid operator. Compiler will ignore it.**

Message Type: Warning
Program Module: Compiler

Explanation:
This mapping instruction contains an invalid expression. The compiler excludes this expression from the compiled version of the map. This may cause unexpected results.

Procedure:
Rewrite the mapping instruction so that it contains all required arguments and data items.

Reference

See the chapter *Mapping* in the *Mapping and Translation Guide* for information about the arguments and data items that are required for this operation.

<expression> **<expression> is not a valid symbol in a <condition/mapping/macro> part of a mapping instruction.**

Message Type: Error
Program Module: Compiler

Explanation:

The mapping instruction contains an invalid symbol (<expression>).

Procedure:

Rewrite the mapping instruction using only valid symbols/characters/numbers.

Reference

See Mapping Rules in the online help or see the chapter *Mapping* in the *IBM® Sterling Gentran:Server® for UNIX - Workstation Mapping and Translation Guide* for information about the symbols for mapping instructions.

<expression> **<expression> is not a valid symbol in this context.**

Message Type: Error
Program Module: Compiler

Explanation:

The mapping instruction contains an invalid symbol (<expression>).

Procedure:

Rewrite the mapping instruction using only valid symbols/characters/numbers.

Reference

See Mapping Rules in the on-line help or see the chapter *Mapping* in the *IBM® Sterling Gentran:Server® for UNIX - Workstation Mapping and Translation Guide* for information about the symbols that are invalid for mapping instructions.

<expression> **<expression> is not recognized as a valid source or destination element.**

Message Type: Warning
Program Module: Compiler

Explanation:

A specified source or destination item is not part of this mapping GROUP.

Procedure:

Use this procedure in response to this message:

Step	Action
1	Change this mapping instruction so that it uses as a source only items in the Source box at the top of this window and uses as a destination only items in the Destination box.
2	Enter the labels, not the names, of the items.
3	Close the Mapping Instructions window and add the item to this GROUP.

<file name> **<file name> is corrupted**

Message Type: Error

Program Module: Main Window (Settings)

Explanation:

The file containing your default data type preferences is corrupt. This error can occur when there is a hardware or software failure while the file is open.

Procedure:

Use this procedure in response to this message:

Step	Action
1	Click User Setup from the Settings menu of the Sterling Gentran:Server window.
2	Set preferences to the default data type values and click OK .

<file name> **<file name> is locked and cannot be updated; file saved as <file name>**

Message Type: Error

Program Module: Installation (Windows only)

Explanation:

The identified DLL file is locked by another process.

Procedure:

Close all other programs to ensure that the DLL file is unlocked.

<file name> **<file name> is read only and cannot be overwritten**

Message Type: Error
Program Module: Installation

Explanation:
The file protection on the identified file is set to read-only.

Procedure:
Use the **attrib** command to remove read-only file protection for this file.

Example
attrib -r <file name>

<source item> **<source item> is not a valid destination for this group.**

Message Type: Error
Program Module: Compiler

Explanation:
The mapping instruction contains a string that is not a label of any of the destination items in this GROUP.

Procedure:
Enter the *label* of one of the destination items after the 'TO' in this mapping expression.

Messages in Alphabetical Order (Not Starting with Variables)

Overview This section lists messages in alphabetical order.

References

- If you want to find a message that begins with a number, see the topic [Messages in Numerical Order](#) in this chapter.
- If you want to find a message that begins with a variable (the first word is surrounded by < >), see the topic [Messages in Alphabetical Order \(Starting with Variables\)](#) in this chapter.

An **An operator was expected, instead a data item <expression> was found.**

Message Type: Error

Program Module: Compiler

Explanation:

The mapping instruction contains the specific data item instead of the required operator. This error stops the compiler.

Procedure:

Correct the mapping instruction by replacing the identified data item with a valid operator or by adding the omitted operator. Then, run the compiler again.

An **An unimplemented error occurred in <error location>. Please report this to product support.**

Message Type: Error

Program Module: Compiler

Explanation:

The compiler encountered an unidentified error and is unable to compile this map.

Procedure:

Call IBM Customer Support and give them the exact wording of the message and the version of Sterling Gentran:Server you are using.

Are There are two deletion prompts to which you must respond.

Module	Message
Compiler	Are you sure you want to delete the selected list(s).

Explanation:

These messages prompt you to confirm a deletion request to avoid unintended actions.

Procedure:

Use this procedure to respond to these prompts.

Step	Action	
1	Look carefully at the names of the list(s) selected.	
2	Use this table to determine your next action.	
	IF you...	THEN Select...
	Want to delete the selected item	Yes.
	Do not want to delete the selected item	No.

Batch **Batch filenames are missing for <number> task(s). Server's timer will skip over such tasks! Do you wish to commit the schedule?**

Message Type: **Warning**
Program Module: **Main Window (Tools)**

Explanation:

Sterling Gentran:Server found a number of tasks without batch files specified. You must specify a batch file and directory path for each task in the Task Scheduler. There is a separate line for each task.

Procedure:

Use one of these responses if you receive this message.

IF you want to perform...	THEN...
Only those tasks for which you have specified batch files	Click Yes .
All tasks in the schedule	<ol style="list-style-type: none"> 1. Click No 2. Correct the schedule using the steps below. <ol style="list-style-type: none"> a. Click Tools on the Main menu. b. Click Task Scheduler from the Tools menu. c. Enter batch file names and directory paths for every task in the Task Scheduler dialog box.

Can't There are two messages related to saving items or files.
Can't open file <file name> to retrieve mapping instructions.
 or
Can't open file <file name> to save mapping instructions.

Message Type: Error
Program Module: Compiler

Explanation:
 Sterling Gentran:Server is unable to open the identified file and retrieve or save mapping instructions.

Procedure:
 Use this procedure in response to this message:

Step	Action	
1	Use the File Manager to locate the file and verify its existence.	
2	Determine the directory in which you should store the file.	
3	Use this table to determine your next action.	
	IF the file...	THEN...
	Exists, but the correct directory does not	Create the directory and move the file into that directory.
	And the directory both exist, but the file is not in the correct directory	Move the file.
	Has the correct name and is in the correct directory	Check the permissions and change them, if necessary.

Character There are two character string errors you may encounter while compiling.

Message Type: Error

Program Module: Compiler

Error	Explanation
Character <string> is not valid in this context.	Sterling Gentran:Server is unable to accept the identified character string. Certain operations or types of data are meaningful only at given points in mapping instructions.
Character(s) <list of characters> cannot be used in the mapping expression <mapping instruction> (see documentation).	The identified character(s) are used incorrectly in this mapping instruction.

Procedure:

To correct these errors, change the mapping instruction to use only appropriate characters or data.

Reference

See the *Mapping* chapter in the *IBM® Sterling Gentran:Server® for UNIX - Workstation Mapping and Translation Guide* for more information about mapping instructions.

Compilation *** COMPILATION COMPLETE ***

Message Type: Informational

Program Module: Compiler

Explanation:

Sterling Gentran:Server displays this message at the end of the Compiler Error Log to indicate that compilation was complete and successful. If you do not see this message, the compilation was unsuccessful.

Procedure:

No further action is necessary.

Compilation

***** COMPILATION COMPLETE, compiled map was written to: <file name>.**

Message Type: Informational

Program Module: Compiler

Explanation:

The compiler has finished compiling the map and has written the Map Table (.tbl) to the file identified in the message.

Procedure:

No further action is necessary.

Could

Sterling Gentran:Server displays a message whenever it is unable to find a file.

Message Type: Error

Program Module: Navigator

Error	Explanation
Could not load application data	The Navigator is unable to load the file containing application data. The directory in which application files are stored is identified on the Setup Directories dialog box.
Could not open file <file name>	Sterling Gentran:Server is unable to open the identified file.

Procedure:

Use this procedure in response to this message:

Step	Action
1	Use File Manager to determine whether the file: <ul style="list-style-type: none"> ▶ and directory exist ▶ is in the specified directory ▶ is empty.

(Contd) Step	Action	
2	Use this table to determine your next action.	
	IF the...	THEN...
	Directory does <i>not</i> exist	Create it.
	Directory exists but the file does not	Create the file and move it to the correct directory.
	File exists and is in the proper directory	Check the read permissions on the file and directory. Change them if needed.

Could **Could not open 'xlcntl.err'**
Message Type: Error
Program Module: Various

Explanation:

Sterling Gentran:Server was unable to find, open, or create the file *xlcntl.err*.

Procedure:

Use one of these responses if you receive this message

IF you are in a...	THEN...
UNIX multi-user environment	Wait, then run the process again.
Single-user environment or know that no other user has the file locked	<ol style="list-style-type: none"> 1. View the Setup Directories dialog box to identify the directory containing temporary files. 2. Use File Manager to determine whether the directory exists and whether it contains the file. <p>If the file does not exist, check write permissions on the directory. If the file exists, check the read permissions on the file and directory.</p>

Delete **Delete File: <file name>
Are You Sure?**

Message Type: Prompt
Program Module: Main Window

Explanation:

Sterling Gentran:Server prompts you to confirm this deletion request. You will be unable to access or restore the file once you confirm the deletion.

Procedure:

Use one of these responses if you receive this message

IF you...	THEN Click...
Are certain you want to permanently delete this file	Yes.
Are uncertain that you want to permanently delete this file	No.

envelope **envelope: Error opening process log file xlcntl.err**

Message Type: Error
Program Module: envelope

Explanation:

Sterling Gentran:Server could not find, open, or create the file *xlcntl.err*. The file may be stored in a directory for which **envelope** does not have read permission.

Procedure:

Use this procedure in response to this message:

Step	Action	
1	View the Setup Directories dialog box to identify the directory that contains your temporary files.	
2	Use File Manager to determine whether the directory exists and whether it contains the file.	
3	Use this table to determine your next action.	
	IF the file...	THEN check the...
	Does <i>not</i> exist	Write permissions on the directory.
	Does exist	Read permissions on the file and directory.

envelope **envelope: Error reading 'envprim.cfg'**

Message Type: **Error**
Program Module: **envelope**

Explanation:
Sterling Gentran:Server cannot read the *envprim.cfg* file.

Procedure:
Use one of these responses if you receive this message

IF...	THEN...
envelope was executed from a directory that did not contain <i>envprim.cfg</i>	Run envelope again, from the directory containing <i>envprim.cfg</i> .
There is no data in the file	Call IBM Customer Support. You must provide the exact wording of the message and the version of Sterling Gentran:Server you are using.

Error **Error Creating <directory name>**

Message Type: **Error**
Program Module: **Main Window (Settings)**

Explanation:
Sterling Gentran:Server is unable to create the directory named in the Setup Directory dialog box.

Procedure:
Use this procedure in response to this message:

Step	Action
1	Determine whether a slash or backslash follows the directory name. If so, delete the extra mark and continue.
2	Check the read and write permissions for the upper-level directory. If necessary, change them to allow Sterling Gentran:Server access.
3	Determine whether enough disk space is available for the directory Sterling Gentran:Server is attempting to create. You may need additional space.

Errors Errors occurred in <location of error>:

Message Type: Error
Program Module: Compiler

Explanation:
The compiler found one or more unspecified errors while compiling a map.

Procedure:
Use this procedure in response to this message:

Step	Action
1	Check the part of the map indicated in the message.
2	Make any corrections necessary and recompile the map.

Error Error saving translation settings

Message Type: Error
Program Module: Main Window (Translate)

Explanation:
Sterling Gentran:Server was unable to save the translation settings.

Procedure:
Use this procedure in response to this message:

Step	Action
1	Check the amount of disk space available for Sterling Gentran:Server to complete this task. If necessary, provide more disk space.
2	Check the permissions of the <i>transin.dat</i> or <i>transout.dat</i> file and the directory containing them. If necessary, change the permissions.
3	Run the translation again.

failed **Failed to allocate translate table memory****Message Type:** Error**Program Module:** lftran**Explanation:**

The lftran program encountered the error indicated and was unable to complete the current process.

Procedure:

Compile the map on the platform on which you are running lftran, then run the translation again. The map must be compiled on the same platform on which you are running lftran and must be in binary format.

failed **failed - error code <error number>****Message Type:** Error**Program Module:** edifrmfmat**Explanation:**

The edifrmfmat program encountered the error indicated and was unable to complete the current process.

Procedure:

See the "References" topic in the Online Help or the chapter *Command Reference* in the *IBM® Sterling Gentran:Server® for UNIX - Workstation Technical Reference Guide* to find the meaning of the error number referred to in this message.

Failed **Failed to save file location paths****Message Type:** Error**Program Module:** Main Window (Settings)**Explanation:**

Sterling Gentran:Server was unable to save the file locations specified in the **Setup Directories** dialog box.

Procedure:

Use this procedure in response to this message:

Step	Action	
1	Open the Setup Directories dialog box and specify the correct file locations again.	
2	Click OK . Note If a directory does not exist, Sterling Gentran:Server will prompt you to create it.	
3	Use this table to determine your next action.	
	If you...	THEN...
	Want to create the directories	1. Click Yes . 2. Use File Manager to verify that the directories exist. Note If they do not exist, Sterling Gentran:Server may not have the correct permissions to create directories. Check the permissions, change them if necessary, and then enter the directory locations again.
Do <i>not</i> want to create the directories	Click No .	

Failed

Failed writing envprim.cfg

Message Type: Error

Program Module: Main Window (Settings)

Explanation:

Sterling Gentran:Server was unable to write the configuration.

Procedure:

Use this procedure in response to this message:

Step	Action
1	Check the amount of disk space available for Sterling Gentran:Server to complete this task. If necessary, provide more disk space.
2	Check the permissions of <i>envprim.cfg</i> and <i>\$EDL_ROOT</i> and the directory containing them. If necessary, change the permissions.
3	Run the process again.

File File:<file name> is currently in use - Delete File?

Message Type: Warning

Program Module: Main Window

Explanation:

Sterling Gentran:Server is prompting you to confirm the deletion of the file that is currently open.

Procedure:

Use this procedure in response to this message:

IF you...	THEN click...
Want to delete this file after closing it	Yes.
Want to save this file after closing it	No.

Internal Internal error # <error number>. Please report this to product support.

Message Type: Error

Program Module: Compiler

Explanation:

The compiler encountered an error (<error number>) and is unable to compile this map.

Procedure:

Call IBM Customer Support. Provide them with the exact wording of the message and the version of Sterling Gentran:Server you are using.

INTERNAL

INTERNAL ERROR: Cannot find the destination element <destination element>, therefore cannot record the mapping instruction <mapping instruction>. Please report this to product support.

INTERNAL ERROR: Cannot find the source element <source element>, therefore cannot proceed with compiling the mapping instruction <mapping instruction>. Please report this to product support.

Message Type: Error
Program Module: Compiler

Explanation:

The compiler is unable to find the destination or source field/element used in the identified mapping instruction.

Procedure:

Use this procedure in response to this message:

Step	Action
1	Open the map, then find the identified destination or source item and mapping instruction.
2	Call IBM Customer Support. Provide them with the exact wording of the message and the mapping instruction. You must also provide the version of Sterling Gentran:Server you are using.

Map

Map: <Map File name> is currently open. All maps must be closed before starting the <string>, do you wish to close it?

Message Type: Warning
Program Module: Various

Explanation:

All maps must be closed before Sterling Gentran:Server can perform the requested operations. The identified map is currently open.

Procedure:

Use one of these responses if you receive this message

IF you want to...	THEN Select...
Continue	<p>Yes.</p> <p>Note If you select Yes and the open map contains unsaved changes, Sterling Gentran:Server prompts you to save the changes before it closes the map.</p> <ul style="list-style-type: none"> ▶ Click Yes to save the changes before closing the file. ▶ Click No to close the file without saving changes.
Cancel the new operation and keep the map open	No.

Missing Missing a required <argument> in the expression.

Message Type: Error
Program Module: Compiler

Explanation:

The currently displayed mapping instruction is invalid. It lacks a required argument.

Procedure:

Change the mapping instruction to include all required arguments.

Reference

See the chapter *Mapping* in the *IBM® Sterling Gentran:Server® for UNIX - Workstation Mapping and Translation Guide* for more information about the arguments required for available operations.

MTIMER MTIMER was suspended during its last execution, resume MTIMER where it left off?

Message Type: Prompt
Program Module: Main Window (Tools)

Explanation:

The Task Scheduler was closed prior to completing the last series of scheduled tasks. You must choose between running all of the tasks again or running only those that were not executed during the previous session.

Procedure:

Use one of these responses if you receive this message:

IF you want to run...	THEN Click...
Only those scheduled tasks that were not executed during the previous session	Yes.
Run all scheduled tasks, including those executed during the previous session	No.

No No remaining disk space encountered attempting to write <file name>

Message Type: Error
Program Module: Installation

Explanation:

There is insufficient disk space available to allow the installation program to write the specified *.DLL* file.

Procedure:

You must make more disk space available, then run the installation program again.

Nothing Nothing to edit. First select a condition, mapping, or macro to edit

Message Type: Error
Program Module: Compiler

Explanation:

The Edit button in the Mapping Instructions window is active only when a condition, a mapping, or a macro is selected.

Procedure:

Use this procedure in response to this message:

Step	Action
1	Click a condition, a mapping, or a macro.
2	Click the Edit button.

Number	Number of output files exceeded max of <Number> Message Type: Error Program Module: Iftran Explanation: Sterling Gentran:Server is unable to open all of the output files required to process the data. Procedure: Restructure your use of output files or split the data so that the pieces are processed separately.
Operation	Operation <operation> does not make sense in this context. Message Type: Error Program Module: Compiler Explanation: The identified operation is not valid for the mapping instruction you are creating. Procedure: Change the operation you are using to create the mapping instruction. Reference See the chapter <i>Working with Mapping Instructions</i> in the <i>IBM® Sterling Gentran:Server® for UNIX - Workstation Mapping and Translation Guide</i> for information about using operations in mapping instructions.
Operation	Operation <operation> is incomplete. It is missing argument number <number>. Operation <operation> is incomplete. It is missing required data. Message Type: Error Program Module: Compiler Explanation: The currently displayed mapping instruction lacks a required argument or data item. The message indicates the number of the missing argument (in order -- from left to right) when appropriate. Procedure: Modify the mapping instruction to include all required arguments and data items.

Reference

See the chapter *Mapping* in the *IBM® Sterling Gentran:Server® for UNIX - Workstation Mapping and Translation Guide* for information about the arguments and data items required for this operation.

Process Process all MTIMER jobs, even those scheduled to run before <current system date and time>

Message Type: Prompt

Program Module: Main Window (Tools)

Explanation:

The Task Scheduler is uncertain whether to run batch files scheduled for a time previous to the current date and time.

Procedure:

Use one of these responses if you receive this message:

IF you want to run...	THEN...
All scheduled jobs	Click Yes .
Only tasks scheduled from the current date and time forward	Click No .
Note To stop the Task Scheduler after starting it, press ALT+F4.	

Save Save illegal instruction?

Message Type: Prompt
Program Module: Compiler

Explanation:

The mapping instruction created is illegal. Sterling Gentran:Server is prompting you to save the illegal mapping instruction. This allows you to correct the instruction later.

Procedure:

Use one of these responses if you receive this message

IF you want to...	THEN click...
Save the mapping instruction and correct it later	Yes.
Delete the illegal mapping instruction	No.

Source Source file: <file name> does not exist

Message Type: Error
Program Module: Main Window (Translate)

Explanation:

Sterling Gentran:Server is unable to locate the source file specified.

Procedure:

Use this procedure in response to this message:

Step	Action	
1	Identify the name of the directory in which you store your source files using the Setup Directories dialog box found under Settings on the Sterling Gentran:Server window.	
2	Use File Manager to determine whether the file exists and whether it is in the correct directory.	
3	Use this table to determine your next action.	
	IF the file...	THEN...
	Is in the wrong directory	Move it.
	Does not exist	Recreate the file or specify another file.

Source **Source file: <file name> is not a valid file**

Message Type: **Error**
Program Module: **Main Window (Translate)**

Explanation:

The selected file does not contains valid EDI data. Sterling Gentran:Server is able to open only valid EDI file.

Procedure:

Specify a valid EDI file.

Suspend **Suspend current MTIMER job processing and resume on next MTIMER execution?**

Message Type: **Prompt**
Program Module: **Main Window (Tools)**

Explanation:

Sterling Gentran:Server is prompting you to suspend the execution of the Task Scheduler. The program displays this prompt when you close the Task Scheduler before all tasks are completed. If you suspend execution, the Task Scheduler retains a list of executed commands. When you run the Scheduler again, you will have the option of running only those tasks not previously executed or running all tasks lists.

Procedure:

Use one of these responses if you receive this message

IF you want to...	THEN click...
Retain the list of completed jobs	Yes.
Delete the list of completed tasks	No.

Tblload **Tblload allocation error: <number>**

Message Type: **Error**
Program Module: **lftran**

Explanation:

There is not enough memory free to continue the translation. This can occur after compiling a map for Windows and then moving the Map Table to UNIX.

Procedure:

Chose one of these in response to this error:

- Close all other applications to free additional memory.
- Recompile the map for UNIX and then proceed.

If neither of these options correct the error, contact IBM Customer Support. You must provide them with the exact text of this message and the version of Sterling Gentran:Server you are running.

Note

The error number in the message points to the part of the code that requires more memory than is available.

The compiler corrected placement of the misplaced symbol <expression>. Please recheck the mapping instruction.

Message Type: Warning

Program Module: Compiler

Explanation:

Sterling Gentran:Server found the identified symbol in an invalid position and moved it to a valid position. However, the new position may not meet your needs.

Procedure:

Use this procedure in response to this message:

Step	Action						
1	Check the map and locate the symbol.						
2	Review the modified mapping instruction.						
3	Use this table to determine your next action.						
	<table border="1" style="width: 100%;"> <thead> <tr> <th style="text-align: left;">If the symbol is positioned...</th> <th style="text-align: left;">THEN...</th> </tr> </thead> <tbody> <tr> <td>As you intended</td> <td>No further action is required.</td> </tr> <tr> <td><i>Not</i> as you intended</td> <td>Move it and recompile the map.</td> </tr> </tbody> </table>	If the symbol is positioned...	THEN...	As you intended	No further action is required.	<i>Not</i> as you intended	Move it and recompile the map.
If the symbol is positioned...	THEN...						
As you intended	No further action is required.						
<i>Not</i> as you intended	Move it and recompile the map.						

The compiler detected a circular reference in the instruction <mapping instruction> for group <GROUP name>. Compilation Stopped.

Message Type: Error

Program Module: Compiler

Explanation:

Sterling Gentran:Server is unable to evaluate a mapping instruction that refers to itself. This mapping instruction contains a macro that refers back to the originating

instruction or that references another macro that refers back to the originating instruction.

Procedure:

Use this procedure in response to this message:

Step	Action
1	Look at the map and find the identified mapping GROUP and the identified mapping instruction for that GROUP.
2	Check the macros used in the mapping instruction for a macro that references another macro that refers back to the originating instruction.
3	Correct the circular reference, and then recompile the map.

The compiler detected a misplaced <expression>. It was ignored.

Message Type: Warning

Program Module: Compiler

Explanation:

The compiler found a mapping instruction with an argument or data item that is invalid in its current position. Sterling Gentran:Server ignored the argument or data item.

Procedure:

Use this procedure in response to this message:

Step	Action
1	Check the map to find the misplaced argument or data item.
2	Correct or remove the misplaced argument or data item and recompile the map before using it again.

The destination elements <element names> have multiple mappings of varying nature. This, together with retain being set for them, would result in inconsistent mapping/translation. The map is not successfully compiled.

Message Type: Error

Program Module: Compiler

Explanation:

The **Retain Field Value** option is set for destination elements to which multiple source items are mapped. This option sets the default value Sterling

Gentran:Server uses for the destination field. If there are multiple sources mapped, Sterling Gentran:Server is unable to consistently apply the same default value. Any translation resulting from the use of this map may be inaccurate. To prevent the inaccurate translation of data, Sterling Gentran:Server will not compile the map.

Procedure:

To correct this error, you must modify the map such that the **Retain Field Value** option is set for a destination element to which only a single source item is mapped.

The **The mapping instruction you are deleting or modifying is referenced in other locations. Are you sure you want to proceed?**

Message Type: **Warning**

Program Module: **Compiler**

Explanation:

The selected macros is used in multiple mapping instructions. Deleting the macro will invalidate all mapping instructions in which it is used. Sterling Gentran:Server is prompting you to confirm the deletion request.

Procedure:

Use one of these responses if you receive this message

IF you want to...	THEN click...
Delete the macro and invalidate all mapping instructions in which it is used	Yes.
Cancel the deletion request	No.

The **The name entered is too long, synonym file name is limited to 19 letters.**

Message Type: **Error**

Program Module: **Compiler**

Explanation:

Synonym file list names can be a maximum of 19 characters in length. The list name entered contains more than 19 characters.

Procedure:

Enter synonym file list name that is from 1 to 19 characters in length.

The **The value you entered is not numeric. Please enter a number.**

Message Type: **Error**
Program Module: **Compiler**

Explanation:

The compiler requires a positive whole number (1, 2, 3, 4) in this field. The value entered is a real number, an alphabetic character(s), or a symbol(s).

Procedure:

Enter a positive whole number in the selected field.

There **There are no more mapping instructions in this group that can be deleted. If you would like to remove any reference to this mapping, please delete the group <group> itself.**

Message Type: **Warning**
Program Module: **Compiler**

Explanation:

The currently selected mapping GROUP contains no mapping instructions. Sterling Gentran:Server will delete the currently selected GROUP unless you add instructions before exiting the Mapping Instructions window.

Procedure:

To eliminate this warning, you must add mapping instructions to the GROUP.

Note

You can delete the GROUP by clicking **Done** on the Mapping Instructions window and responding **Yes** to the prompt that Sterling Gentran:Server then displays.

There **There is a circular reference in macro <macro> to itself.**

Message Type: **Error**
Program Module: **Compiler**

Explanation:

The identified macro references itself or another macro by which it is referenced. The compiler is unable to evaluate the macro because of this circular reference.

Procedure:

Use this procedure in response to this message:

Step	Action
1	Look at the map and find the identified macro.
2	Correct the circular reference.
3	Compile the map again.

This This version does not support dates beyond the year 2036.

Message Type: Information

Program Module: lftran

Explanation:

The system displays this message when the date entered is greater or equal to 2036. This version of the software is unable to manipulate dates occurring during or after the year specified.

Trading Trading Partnership File records are of the wrong format. Perhaps you did not run a TP file conversion.

Message Type: Error

Program Module: tpadmin

Explanation:

You tried to access Trading Partner records created with a version of Sterling Gentran:Server prior to 5.2. The structure of Trading Partner records changed in Sterling Gentran:Server 5.2. The version 5.2 **tpadmin** runs only on Trading Partner records converted with **tp_cvrt** or created with Sterling Gentran:Server 5.2.

Procedure:

Run **tp_cvrt** before you try to access the Trading Partner records.

Reference

See the *IBM® Sterling Gentran:Server® for UNIX - Workstation Upgrade and Data Conversion Guide* for information about **tp_cvrt**.

Unable Unable to access source file: <file name>**Message Type:** Error**Program Module:** Main Window (Translate)**Explanation:**

Sterling Gentran:Server cannot access the source file selected for this translation.

Procedure:

Use this procedure in response to this message:

Step	Action	
1	Use File Manager to determine whether the file and directory exist, whether the file is stored in the directory specified, and whether the file is empty.	
2	Use this table to determine your next action.	
	IF the...	THEN...
	Directory does not exist	Create it.
	Directory exists but the file does not	Create the file and move it to the correct directory or specify another file as the source for this translation.
	File exists and is in the proper directory	<ol style="list-style-type: none"> 1. Check the read permissions on the file and directory. 2. Change the permissions of the file or directory.

Unable Unable to open file <file name>**Message Type:** Error**Program Module:** Various**Explanation:**

Sterling Gentran:Server cannot open the file specified.

Procedure:

Use this procedure in response to this message:

Step	Action	
1	View the Setup Directories dialog box and determine where the file should be stored.	
2	Use File Manager to determine whether the file exists and its location.	
3	Use this table to determine your next action.	
	IF the file...	THEN...
	Does not exist	Create or copy it.
	Exists, but the directory does not	Create the directory and move the file into it.
	And the directory exist, but the file is not in the correct directory	Move the file.
Has the correct name and is in the correct directory	Check the permissions and change them if necessary.	

Unable Unable to open 'mentor.vrf'. Make sure this file is in the defined Screen Lib directory.

Message Type: Error

Program Module: Various

Explanation:

Sterling Gentran:Server is unable to open one of the files necessary to display some screens. This message usually displays only when opening Sterling Gentran:Server.

Procedure:

Use this procedure in response to this message:

Step	Action	
1	Use the File Manager to view the directory containing Sterling Gentran:Server screen files.	
2	Move the <i>mentor.vrf</i> file to that directory. Note If you are unable to find the file, reinstall Sterling Gentran:Server as an upgrade and load only programs.	
3	IF the file...	THEN...
	Does not exist	Create it.
	Exists, but the correct directory does not	Create the directory and move the file into it.
	And the directory exist, but the file is not in the correct directory	Move the file.
	Has the correct name and is in the correct directory	Check the permissions and change them if necessary.

WARNING

WARNING: <expression> is of type <argument type>, this is not a valid argument type for the operation <operation>.

Message Type: Warning

Program Module: Compiler

Explanation:

The argument entered is invalid for this operation. The compiler will accept an operation with invalid argument types, but may provide unexpected results.

Procedure:

Change the mapping instruction to include only arguments with correct data types.

Reference

See the chapter *Mapping* in the *IBM® Sterling Gentran:Server® for UNIX - Workstation Mapping and Translation Guide* for information about valid arguments for this operation and valid data types for each argument.

WARNING **WARNING: Incompatible type: <expression> is a <data type>, a <data type> is required.**

Message Type: Warning
Program Module: Compiler

Explanation:

Change the mapping instruction to use a valid data type for the specified item or expression in this context.

Reference

See the chapter *Mapping* in the *IBM® Sterling Gentran:Server® for UNIX - Workstation Mapping and Translation Guide* for information about valid arguments for this operation and valid data types for each argument.

WARNING **WARNING: Mapping expression <mapping instruction> has not been corrected in the editor, it will not be compiled.**

Message Type: Warning
Program Module: Compiler

Explanation:

The compiler found an invalid mapping instruction. Sterling Gentran:Server will ignore the mapping instruction and excluding it from the compiled version of the map. Using this map in a translation may cause unexpected results.

Procedure:

Use this procedure in response to this message:

Step	Action
1	Look at the map and locate the mapping instruction identified in the message.
2	Correct or delete the mapping instruction and compile the map again.

WARNING **WARNING: The number entered is too large.**

Message Type: Error
Program Module: Compiler

Explanation:

The number entered exceeds the maximum value of this field.

Procedure:

Check online help and/or the documentation to find the maximum limit of this value and then enter another number into this field.

**WARNINGS/
ERRORS**

WARNINGS/ERRORS occurred in the <location of error> while working on: <mapping instruction>

WARNINGS/ERRORS occurred in the <location of error> while working on <mapping instruction> in group <GROUP name> which contains elements <element>:

Message Type: Warning and/or error

Program Module: Compiler

Explanation:

The compiler found one or more unspecified errors or conditions that could cause problems.

Procedure:

Use this procedure in response to this message:

Step	Action
1	Check the part of the map indicated.
2	Check the identified mapping instruction.
3	Make any corrections necessary and compile the map again.

You You are about to delete the last mapping instruction from this group. Proceed?

Message Type: Warning

Program Module: Compiler

Explanation:

If you delete the last mapping instruction from a mapping GROUP, Sterling Gentran:Server automatically deletes the GROUP when you exit the Mapping Instructions window.

Procedure:

Use one of these responses if you receive this message:

IF you want to...	THEN click...
Retain the mapping instruction	Yes.
Delete the mapping instruction and the GROUP	No.

You **You have already accessed all the mapping instructions for this group. Do you want to add a new one?**

Message Type: **Informational**

Program Module: **Compiler**

Explanation:

Sterling Gentran:Server prompts you to create a new mapping instruction in the following situations:

- You click the **Previous** button on the **Mapping Instructions** window while viewing the first mapping instruction in a GROUP.
- You click the **Next** button on the **Mapping Instructions** window while viewing the last mapping instruction in a GROUP.

Procedure:

Use one of these responses if you receive this message:

IF you...	THEN enter...
Want to add a new mapping instruction	Yes
Do <i>not</i> want to add a new mapping instruction	No

Sterling Gentran:Server Return Codes

atext This table lists the return codes defined for the **atext** command.

Return Code	Definition
0	Success
1	Cannot use one file as input and output file
300 or 45*	Missing or invalid arguments Note Some systems support return codes only up to 255 before they cycle back to zero.
380 or 125*	Failed to open file Note Some systems support return codes only up to 255 before they cycle back to zero.

ediarc The system issues the default return code of zero (0) for error messages with numbers less than 200 if the -e parameter is not used.

This table lists the return codes for the **ediarc** command.

Return Code	Definition
0	Success
1	A required argument was not sent to arcset
2	Failed to open a file
4	Failed to write a file
5	Failed to archive a set

edifmat The following table lists the return codes defined for the **edifmat** command.

Return Code	Definition
0	<p>Success</p> <p>Note Return code 0 would also be returned if edifmat failed to run due to an invalid number of parameters (invocation screen) or if it could not find the file <code>msgrecs.vda</code> (necessary for VDA standard); See error message 180 for more information</p>
1	Interchange has no trailer; See error message 379 for more information
2	<p>Invalid data; See the following error messages for more information:</p> <ol style="list-style-type: none"> 1) 361 Invalid set count 2) 362 Invalid group count 3) 377 Interchange count errors 4) 377 Segment id too long 5) 378 Invalid characters in interchange 6) 387 Invalid segment id
3	<p>Header rejected; See the following error messages for more information:</p> <ol style="list-style-type: none"> 1) 100 Defined Terminator could not be found, or Separator and Terminator are the same character, or Separator, Sub-separator or Terminator is invalid 2) 200 Encountered segment too long to process
126	No EDI header information found in input file; no header count; See error message 126 for more information
380	Failed to open file; See error message 380 for more information
382	Failed to write file; See error message 382 for more information

envelope This table lists the return codes defined for the **envelope** command.

Return Code	Definition
0	Success/No data to envelope
300 or 45*	Failed to open file
380 or 125*	Failed to read file Note Some systems support return codes only up to 255 before they cycle back to zero.
382 or 127*	Failed to write file Note Some systems support return codes only up to 255 before they cycle back to zero.

Iftran This table describes the Iftran return codes.

Return Code	Meaning	Symbol
1	Reached the end of the file unexpectedly	FILEEND
2	Error in invocation of translation	ARGERR
3	Unable to load translation table (compiled map/translation object)	TBLERR
4	Unable to open a file	OPNERR
5	Could not read, write, or update Trading Partnership record	TPERR
6	Application file is not formatted as expected. Could be corrupt.	APPFMTERR
7	Could not find Trading Partnership Code in the application file	APPTPERR
8	Ran out of memory	ALLOC_FAIL
9	Call to database failed	DBERR

(Contd) Return Code	Meaning	Symbol
10	The version of the translator does not match the product version	VERSION
12	Error occurred during compliance checking	CMPCHKERR
13	Failed to load the ID code file into memory	IDCODEERR
14	Error in application data	APPDATAERR
15	Error parsing NCPDP file	RECIDERR
16	Input file is not new-line terminated	NO_NEWLINE
17	Could not read, write, or update organization records	ORGERR
20	Incoming set sequence number not as expected	SEQUENCE_ERROR
25	Error parsing the XML file	XMLFILEERR
26	Translation error. See the dtlLog.err file for explanation.	COMMON_LIB_ERROR
50	Duplicate sets found	DUPLICATE_SET
80	Unable to determine the type of the input record	UNDEF_REC_TYPE

udfsort

The following table lists the return codes defined for the **udfsort** command.

Return Code	Definition
0	Success
-1	Missing or invalid arguments
	No data in input file
	Failed to allocate memory

(Contd) Return Code	Definition
	Error writing file
-380 or -125*	Failed to open file Note Some systems support return codes only up to 255 before they cycle back to zero.

UNIX Error Codes

- 1 Not super-user
- 2 No such file or directory
- 3 No such process
- 4 Interrupted system call
- 5 I/O error
- 6 No such device or address
- 7 Arg list too long
- 8 Exec format error
- 9 Bad file number
- 10 No children
- 11 No more processes
- 12 Not enough core
- 13 Permission denied
- 14 Bad address
- 15 Block device required
- 16 Mount device busy
- 17 File exists
- 18 Cross-device link
- 19 No such device
- 20 Not a directory
- 21 Is a directory
- 22 Invalid argument
- 23 File table overflow
- 24 Too many open files
- 25 Not a typewriter
- 26 Text file busy
- 27 File too large
- 28 No space left on device
- 29 Illegal seek
- 30 Read only file system
- 31 Too many links
- 32 Broken pipe
- 33 Math arg out of domain of func
- 34 Math result not representable

- 35 No message of desired type
- 36 Identifier removed
- 37 Channel number out of range
- 38 Level 2 not synchronized
- 39 Level 3 halted
- 40 Level 3 reset
- 41 Link number out of range
- 42 Protocol driver not attached
- 43 No CSI structure available
- 44 Level 2 halted
- 45 Deadlock condition
- 46 No record locks available
- 50 Invalid exchange
- 51 Invalid request descriptor
- 52 Exchange full
- 53 No anode
- 54 Invalid request code
- 55 Invalid slot
- 56 File locking deadlock error
- 57 Bad font file fmt
- 60 Device not a stream
- 61 No data (for no delay i/o)
- 62 Timer expired
- 63 Out of streams resources
- 64 Machine not on the network
- 65 Package not installed
- 66 The object is remote
- 67 The link has been severed
- 68 Advertise error
- 69 Srmount error
- 70 Communication error on send
- 71 Protocol error
- 74 Multihop attempted
- 76 Cross mount point (not really error)
- 77 Trying to read unreadable message
- 78 Path or path component exceeds limit

- 80 Given .log name not unique
 - 81 f.d. invalid for this operation
 - 82 Remote address changed
 - 83 Can't access a needed shared lib.
 - 84 Accessing a corrupted shared lib.
 - 85 .lib section in a.out corrupted
 - 86 Attempting to link in too many libs.
 - 87 Attempting to exec a shared library
 - 135 Structure needs cleaning
 - 137 Not a name file
 - 138 Not available
 - 139 Is a name file
 - 140 Remote I/O error
 - 141 Reserved for future
 - 142 Error 142
-

DISAM Error Codes

UNIX System errors usually are 1 through 99. See your UNIX system documentation for additional information about these errors.

#define EDUPL	100	/*duplicate record*/
#define ENOTOPEN	101	/*file not open*/
#define EBADARG	102	/*invalid argument*/
#define EBADKEY	103	/*invalid key description*/
#define ETOOMANY	104	/*out of file descriptors*/
#define EBADFILE	105	/*invalid isam file format*/
#define ENOTEXCL	106	/*exclusive lock required*/
#define ELOCKED	107	/*record claimed by another*/
#define EKEXISTS	108	/*key already exists*/
#define EPRIMKEY	109	/*primary key may not be used*/
#define EENDFILE	110	/*beginning or end of the file reached*/
#define ENOREC	111	/*no match was found*/
#define ENOCURR	112	/*there is no "current" established*/
#define EFLOCKED	113	/*entire file locked by another*/
#define EFNAME	114	/*file name too long*/
#define ENOLOK	115	/*cannot create lock file*/
#define EBADMEM	116	/*memory allocation request failed*/
#define EBADCOLL	117	/*bad custom collating*/
#define EUSER	129	/*too many users*/
#define EVIRTUAL	140	/*unable to reopen virtual file */

Moving Files Overview

Contents**Overview**

- ▶ Introduction 2
- ▶ The Source-to-Destination Process 3

Overview

Introduction

In this chapter

This chapter contains an overview of the process of moving files from a source environment to a destination environment. To move files successfully, follow the recommended approach described in this chapter.

Key terms

This table lists the key terms used in this chapter.

Term	Description
destination environment	The area to which you are moving files. Example Your production environment, where Sterling Gentran:Server processes your live data, is the destination when moving files from your test area.
load	The process of converting a <i>.unl</i> file (ASCII file) back to an ISAM file format with a utility designed for this purpose.
source environment	The area in your computer from which you are moving files. Example Your test environment, where you test software upgrades, run data conversion programs, or test new maps, Trading Partnership records, and other Sterling Gentran:Server components, is the source when moving files to your production environment.
unload	The process of converting an ISAM file to an ASCII file with a utility designed for this purpose.

The Source-to-Destination Process

Introduction

This section provides critical information about difficulties you may encounter when moving files and suggests procedures for avoiding those difficulties. This section also provides a diagram and procedure that describe the process of moving files from a source environment to a destination environment.

When and why to move files

You may find it necessary to move files from one environment to another in the following situations:

- ▶ Map files created in a test environment are ready for use in production.
- ▶ You want to use the map files from one installation in another.
- ▶ You are upgrading to a new Standards version.

Difficulties with moving entire directory tree

WARNING

You may encounter serious difficulties if you attempt to copy the entire source area directory tree (executable and data files) to the destination area.

When you copy an entire directory tree to a new location, the copying process breaks links among linked files. If you have the IBM® Sterling Gentran:Server® for UNIX - EC Workbench product, the translation data manager run directory is at risk. If the links in that directory are broken, the translation data manager is unable to start.

Recommended approach

You should build your destination area first and then move data files from the source area, rather than attempting to copy the entire source area to the destination area.

Move all data files at once

If you are moving data files to another machine, you can unload all the data files you need to move onto media, such as a tape, and then load them to the new machine from media. You do not have to move each data file separately.

Caution

You must use the procedures described in this guide to unload and load each type of data file. Using other methods to load or unload files could corrupt your data.

Moving ISAM files

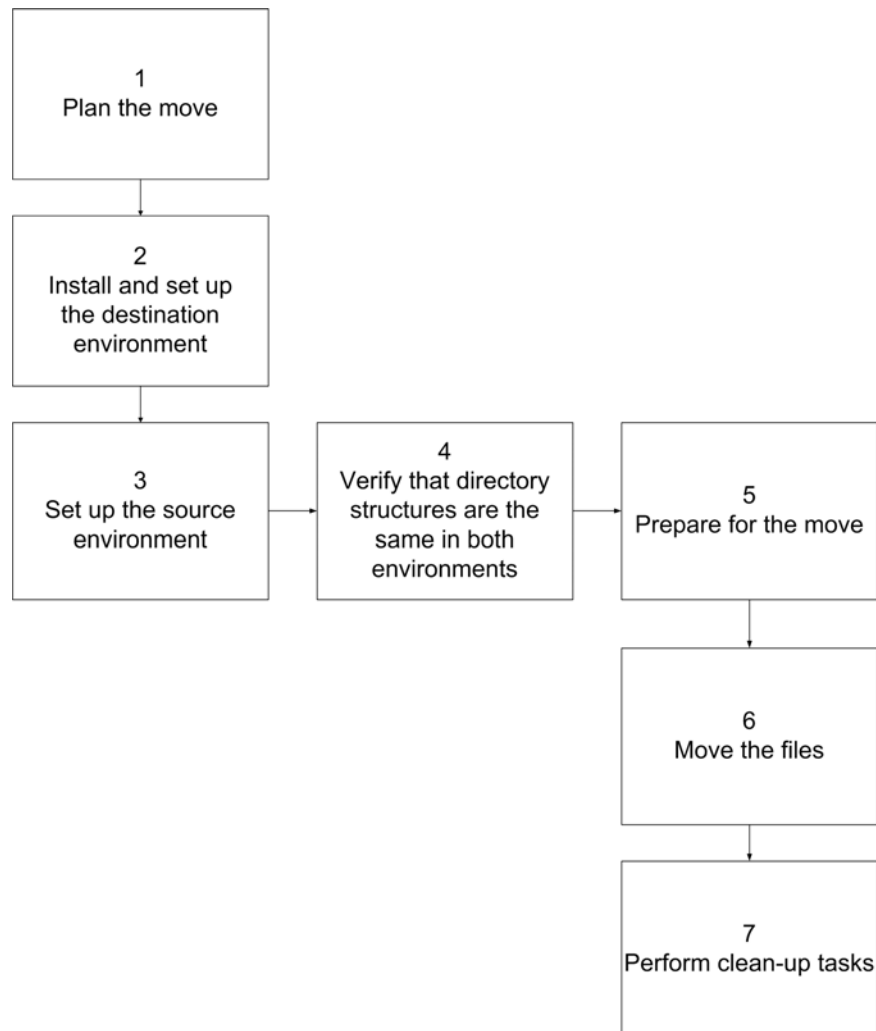
Files in Indexed Sequential Access Method (ISAM) format require special handling. Sterling Gentran:Server provides special utilities to move these files.

Reference

See the section [Moving ISAM files](#) in this guide for more information about this process.

Process flow diagram

This illustration shows the process flow for moving files from a source environment to a destination environment.



Source-to-destination task summary

This table describes the stages in the source-to-destination process.

Stage	Description
1	<p>Plan the move.</p> <p>Reference See the chapter Planning the Move in this guide.</p>
2	<p>Install and set up the destination environment.</p> <p>Reference See the <i>IBM® Sterling Gentran:Server® for UNIX Getting Started Guide</i> and <i>Installation Checklists</i> for more information about the process of installing and setting up an environment.</p>
3	<p>Prepare the source environment.</p> <p>Reference See the topic Preparing the Source Environment in the chapter <i>Preparing to Move Files</i> for more information about this process.</p>
4	<p>Verify that the directory structures of the source and destination environments are the same.</p> <p>Warning Differences between your source and destination directory structures can affect the ability of Sterling Gentran:Server to find the files it needs to process data.</p> <p>Reference See the the chapter Planning the Move for more information about this process.</p>
5	<p>Prepare for the move.</p> <p>Reference See the chapter Planning the Move in this guide.</p>
6	<p>Move the files.</p> <p>Reference See the chapter Moving Files in this guide.</p>
7	<p>Perform clean-up tasks.</p> <p>Reference See the chapter Cleaning Up After the Move in this guide.</p>

Planning the Move

Contents

Overview

- ▶ Introduction 2
- ▶ The Planning Process 3

Describing the Source and Destination Environments

- ▶ Overview 5

Choosing a File Transfer Method

- ▶ Transfer Types, Methods, and File Types 7
- ▶ How to Choose a File Transfer Method 12
- ▶ How to Identify the Files to Move 13
- ▶ File Checklist 15
- ▶ How to Select a Time to Move Files 18

Overview

Introduction

In this chapter This chapter explains how to plan the movement of files from a source to a destination environments.

Key terms This table lists the key terms used in this chapter.

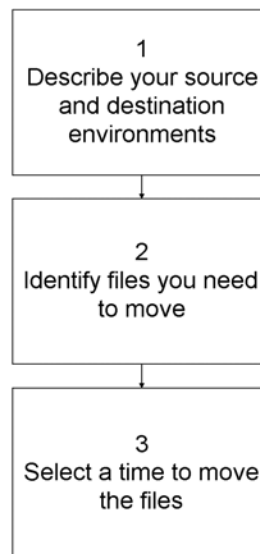
Term	Description
destination environment	The area on a computer to which you are moving the files.
source environment	The area on a computer from which you are moving your files.
unload	The process of converting an ISAM file to an ASCII file with a utility designed for this purpose.

The Planning Process

Introduction Planning before you move files from a source environment to a destination environment helps ensure that you:

- Move all necessary files
- Avoid file permission problems
- Do not mistakenly overwrite files
- Avoid processing conflicts.

Process diagram This illustration shows the tasks in the planning process.



Task summary

This table describes the tasks in the planning process.

Task	Description
1	Describe your source and destination environments. Reference See Describing the Source and Destination Environments in this chapter.
2	Identify the files you need to move. Reference See the section How to Identify the Files to Move in this chapter.
3	Select a time to move the files. Reference See the section How to Select a Time to Move Files in this chapter.

Describing the Source and Destination Environments

Overview

Introduction This section provides the basic process for describing the source and destination environments involved in the file movement process.

Importance The structure of your source and destination environments determines the steps you perform to move files from a source to a destination.

Questions to answer Answer this list of questions to describe your source and destination environments.

- ▶ Have you created both your source area and your destination area for Sterling Gentran:Server?
- ▶ How is your Sterling Gentran:Server system structured?
In other words, do you have one source environment and one destination environment? Or, do you have a source area and destination area, each of which has two or more environments?
- ▶ Is the destination environment on the same machine as the source environment, or is it on a different machine?
- ▶ Is the directory structure of the destination environment an exact duplicate of the source environment?

If not, what are the differences?

Environment examples

These examples represent four types of environments. Your environment may reflect all or some of the characteristics found in each of these examples

Example: PC to PC

Your source data is on one PC and your destination data is on another PC. The directory names are identical on both machines. The PCs are not linked for file transfers.

Example: PC to UNIX

You develop and test your maps on a PC and then transfer them to a UNIX host. On the UNIX host, you have a destination area with two environments: one for purchase orders (POPROD) and the other for invoices (INVPROD).

Note

This example applies only to clients who use IBM® Sterling Gentran:Server® for UNIX - Workstation and one additional Sterling Gentran:Server product.

Choosing a File Transfer Method

Transfer Types, Methods, and File Types

Basis for method of moving file

The way in which you move a file depends on the following:

- ▶ Type of transfer
- ▶ Type of file
- ▶ Transfer method.

Types of transfers

These are the types of file transfers:

- ▶ PC to linked UNIX host
- ▶ PC to unlinked UNIX host
- ▶ PC to linked PC
- ▶ PC to unlinked PC

Types of files

These are the types of moveable files:

- ▶ ASCII
- ▶ Converted indexed
- ▶ Binary

**Sterling
Gentran:Server
file types**

This table indicates the file types of the main Sterling Gentran:Server files.

File Type	File Name	ASCII	Indexed	Binary
Uncompiled Application Integration map (binary)	<i><mapname>.map</i>			X
Compiled Application Integration map	<i><mapname>.tpl</i>			X
File definition	<i><filename>.ddf</i>	X		
Trading Partnership record	<i>tp.dat</i> and <i>tp.idx</i> <i>tpmisc.dat</i> and <i>tpmisc.idx</i>		X	
Tradacom supplementary record	<i>tradacom.dat</i> and <i>tradacom.idx</i>		X	
Organization record	<i>org.dat</i> and <i>org.idx</i>		X	
Contact record	<i>contact.dat</i> and <i>contact.idx</i>		X	
Category records	<i>cattype.dat</i>	X		
	<i>catvalue.dat</i> and <i>catvalue.idx</i>		X	
Reconciliation ID records	<i>tprecon.dat</i> and <i>tprecon.idx</i>		X	
EDI document specifier mapping files	<i>ds_map.dat</i> and <i>ds_map.idx</i> <i>ds_name.dat</i> and <i>ds_name.idx</i> <i>ds_tptbl.dat</i> and <i>ds_tptbl.idx</i>		X	

(Contd) File Type	File Name	ASCII	Indexed	Binary
APP document specifier mapping files	<i>ds_map_app.dat</i> and <i>ds_map_app.idx</i> <i>ds_name.dat</i> and <i>ds_name.idx</i> <i>ds_tptbl_app.dat</i> and <i>ds_tptbl_app.idx</i>		X	
Agent configuration records	<i>dm.dat</i> and <i>dm.idx</i>		X	
Data managers	<i>.dmcfg.dat</i> and <i>.dmcfg.idx</i>		X	
Translation script	<filename>.<ext>	X		
Pattern files	<i>pat.dat</i> and <i>pat.idx</i> <i>patlst.dat</i> and <i>patlst.idx</i> .		X	
Post processing script	<filename>.<ext>	X		
Communication script	<filename>.<ext>	X		
Standards Cross Reference	<i>xtable.dat</i> and <i>xtable.idx</i>		X	
Application TP Rules	<i>apptptbl.dat</i> and <i>apptptbl.idx</i>		X	
Application TP Cross Reference	<i>appxref.dat</i> and <i>appxref.idx</i>		X	

TXML translation option file types

This table indicates the file types of selected Sterling Gentran:Server files you may have if you have the XML translation option with your Sterling Gentran:Server product.

File Type	File Name	ASCII	Indexed	Binary
First Level Element	<i>xmlspl1.dat and xmlspl1.idx</i>		X	
Second Level Element	<i>xmlspl2.dat and xmlspl2.idx</i>		X	
Third Level Element	<i>xmlspl3.dat and xmlspl3.idx</i>		X	
Trading Partnership Rules	<i>xmltbtpl.dat and xmltbtpl.idx</i>		X	
Trading Partnership Cross Reference	<i>xmlxref.dat and xmlxref.idx</i>		X	
XML document specifier mapping files	<i>ds_map_xml.dat and ds_map_xml.idx</i> <i>ds_name.dat and ds_name.idx</i> <i>ds_tptbl_xml.dat and ds_tptbl_xml.idx</i>		X	

Transfer methods

You can transfer files using:

- Copy commands, such as **cp**, **cpio**, and **copy**
- FTP operations for ASCII and Binary files (asc/bi protocols respectively)

Conversion utilities

Before you move Indexed Sequential Access Method (ISAM) database files from one machine to another, you must convert the file into an ASCII file. The resulting file has a *.unl* extension. After you move the file, you must convert it back to an indexed file.

To convert an ISAM file into an ASCII file, you use a Sterling Gentran:Server **unload utility**.

To convert an ASCII file into an ISAM file, you use a Sterling Gentran:Server **load utility**.

How to Choose a File Transfer Method

Introduction The method you use to transfer a file depends on the type of transfer and the type of file.

Decision table Use this table to choose a file transfer method.

IF the type of transfer is...	AND the file type is...	THEN...
One environment to another on same host or PC	ASCII or binary	Use the copy file command.
	Indexed (ISAM)	Use the copy file command.
PC or UNIX host to connected UNIX host (running same operating system)	ASCII	Use the FTP command for ASCII files.
	Binary	Use the FTP command for binary files.
	Indexed (ISAM)	1.Unload the file. 2.FTP (ASCII) the file to the destination. 3.Load the file at the destination.
PC or UNIX host to unconnected UNIX host	ASCII or binary	1.Copy the file to tape or other media. 2.Copy the file to the new host.
	Indexed (ISAM)	1.Unload the file. 2.Copy the file to tape or other media. 3.Copy the file to the new host 4.Load the file at the destination.

How to Identify the Files to Move

Introduction

When you create and test a file, such as a map or a new Trading Partnership, you often create a number of related files. When you move the new file to your destination area, you must also identify and move the related files that affect processing.

Decision table for new maps

Use this table to decide which map-related files you need to move in addition to moving the new map.

IF the map is for...	THEN move the...
Outbound processing	Data definition (. <i>ddf</i>) file used for the compiled Application Integration map (. <i>TPL</i>) file.
A new Trading Partnership	Trading Partnership records: <ul style="list-style-type: none"> ▶ <i>tp.dat</i> and <i>tp.idx</i> ▶ <i>tpmisc.dat</i> and <i>tpmisc.idx</i> ▶ <i>org.dat</i> and <i>org.idx</i> ▶ <i>xtable.dat</i> and <i>xtable.idx</i>
An application that uses the Trading Partnership Rule Definition feature	<ul style="list-style-type: none"> ▶ <i>apptptbl.dat</i> and <i>apptptbl.idx</i> ▶ <i>appxref.dat</i> and <i>appxref.idx</i>
XML processing Note Available only if you have the XML translation option.	<ul style="list-style-type: none"> ▶ <i>xmlspl1.dat</i> and <i>xmlspl1.idx</i> ▶ <i>xmlspl2.dat</i> and <i>xmlspl2.idx</i> ▶ <i>xmlspl3.dat</i> and <i>xmlspl3.idx</i> ▶ <i>xmlbtpl.dat</i> and <i>xmlbtpl.idx</i> ▶ <i>xmlxref.dat</i> and <i>xmlxref.idx</i>

Decision table for Trading Partnerships

Use this table to decide which Trading Partnership and Trading Partnership-related files you need to move to the destination area.

IF the Trading Partnership...	THEN move the...
Is new	Trading Partnership records: <ul style="list-style-type: none"> ▶ <i>tp.dat</i> and <i>tp.idx</i> ▶ <i>tpmisc.dat</i> and <i>tpmisc.idx</i> ▶ <i>org.dat</i> and <i>org.idx</i>
Is part of a new category	Category files: <ul style="list-style-type: none"> ▶ <i>cattype.dat</i> ▶ <i>catvalue.dat</i> and <i>catvalue.idx</i>
Has a new contact list record	Contact files: <i>contact.dat</i> and <i>contact.idx</i>
Is new and uses reconciliation IDs for inbound acknowledgments	Trading Partnership reconciliation ID files: <ul style="list-style-type: none"> ▶ <i>tprecon.dat</i> and <i>tprecon.idx</i>
Code is used in a cross reference table	Appropriate table: <ul style="list-style-type: none"> ▶ <i>xtable.dat</i> and <i>xtable.idx</i> ▶ <i>appxref.dat</i> and <i>appxref.idx</i> ▶ <i>xmlxref.dat</i> and <i>xmlxref.idx</i>.
Is for an XML trading partner Note Available only if you have the XML translation option.	XML-related files: <ul style="list-style-type: none"> ▶ <i>xmlsp1.dat</i> and <i>xmlsp1.idx</i> ▶ <i>xmlsp2.dat</i> and <i>xmlsp2.idx</i> ▶ <i>xmlsp3.dat</i> and <i>xmlsp1.idx</i> ▶ <i>xmlptbl.dat</i> and <i>xmlptbl.idx</i> ▶ <i>xmlxref.dat</i> and <i>xmlxref.idx</i>

Note

If you have DOS batch files used in your Sterling Gentran:Server installation, you may need to move them as well.

File Checklist

When to use Use the checklist in this topic when you need a quick reference to remind you of the files you need to include in a source-to-destination move.

We suggest that you make a copy of the list so that you can use it each time you move files.

Checklist Use this list to check off and record the names of the files you need to move.

	File Type	File Name
	Application Integration Map	_____. <i>map</i> _____. <i>TPL</i>
	Data definition file	_____. <i>ddf</i>
	Application Description	_____. <i>app</i>
	Implementation Guide	_____. <i>ig</i>
	Specific synonym list	<mapname>. <i>dat</i> and <mapname>. <i>idx</i>
	Generic synonym list	<i>generic.dat</i> and <i>generic.idx</i>
	Thesaurus list	<i>thesaurus.dat</i> and <i>thesaurus.idx</i>
	Trading Partnership records	<i>tp.dat</i> and <i>tp.idx</i> <i>tpmisc.dat</i> and <i>tpmisc.idx</i>
	TRADACOMS supplementary Trading Partnership records	<i>tradacom.dat</i> and <i>tradacom.idx</i>
	Category records	<i>cattype.dat</i> <i>catvalue.dat</i> and <i>catvalue.idx</i>
	Reconciliation ID records	<i>tprecon.dat</i> and <i>tprecon.idx</i>
	Trading Partnership Contact records	<i>contact.dat</i> and <i>contact.idx</i>

	(Contd) File Type	File Name
	Trading Partnership Organization records	<i>org.dat</i> and <i>org.idx</i>
	EDI document specifier mapping files	<i>ds_map.dat</i> and <i>ds_map.idx</i> <i>ds_name.dat</i> and <i>ds_name.idx</i> <i>ds_tptbl.dat</i> and <i>ds_tptbl.idx</i>
	APP document specifier mapping files	<i>ds_map_app.dat</i> and <i>ds_map_app.idx</i> <i>ds_name.dat</i> and <i>ds_name.idx</i> <i>ds_tptbl_app.dat</i> and <i>ds_tptbl_app.idx</i>
	Agent configuration records	<i>dm.dat</i> and <i>dm.idx</i>
	Data managers	<i>.dmcfg.dat</i> and <i>.dmcfg.idx</i> Note In most cases, you modify this file in the destination environment rather than unloading the file.
	Translation script	_____ <i>xltr.scr</i>
	Patterns	<i>pat.dat</i> and <i>pat.idx</i> <i>patlst.dat</i> and <i>patlst.idx</i> .
	Post processing script	_____ <i>.scr</i>
	Communication script	_____ <i>.scr</i>
	Custom shell scripts	_____ <i>.sh</i>
	DOS batch files	_____ <i>.bat</i>
	LOCKS files	LOCKS/_____
	Standards cross reference files	<i>xtable.dat</i> and <i>xtable.idx</i>
	Application TP rules files	<i>apptptbl.dat</i> and <i>apptptbl.idx</i>
	Application TP Cross Reference	<i>appxref.dat</i> and <i>appxref.idx</i>

If you have the XML translation option, you may need to move these files.

	File Type	File Name
	First level Elements	<i>xmlspl1.dat</i> and <i>xmlspl1.idx</i>
	Second level Elements	<i>xmlspl2.dat</i> and <i>xmlspl2.idx</i>
	Third level Elements	<i>xmlspl3.dat</i> and <i>xmlspl3.idx</i>
	Trading Partnership rules	<i>xmltbtpl.dat</i> and <i>xmltbtpl.idx</i>
	Trading Partnership cross reference	<i>xmlxref.dat</i> and <i>xmlxref.idx</i>
	XML document specifier mapping files	<i>ds_map_xml.dat</i> and <i>ds_map_xml.idx</i> <i>ds_name.dat</i> and <i>ds_name.idx</i> <i>ds_tptbl_xml.dat</i> and <i>ds_tptbl_xml.idx</i>

How to Select a Time to Move Files

Introduction

When you move files from source to destination, you stop Sterling Gentran:Server processing. For IBM® Sterling Gentran:Server® for UNIX, you also stop client access to the host. For this reason, you should move files when halting processing is least likely to cause problems for your organization and for your users.

Questions to answer

Answer these questions to find the best time for moving files.

- ▶ What day of the week or month, if any, does your organization not run Sterling Gentran:Server?
 - ▶ What time of day is processing least likely?
 - ▶ Which Sterling Gentran:Server processes are scheduled and when are they run?
 - ▶ How long do you think it will take to move the files to the destination environment?
 - ▶ When are other users least likely to require access to Sterling Gentran:Server?
-

Preparing to Move Files

Contents	Overview	
	▶ Introduction	2
	Preparing the Destination Environment	
	▶ Overview	4
	▶ How to Create Empty ISAM Files	5
	Preparing the Source Environment	
	▶ Overview	6
	▶ The Workstation Preparation Process	7

Overview

Introduction

In this chapter This chapter describes the tasks and procedures you must complete before moving files from the source environment to the destination environment.

Key terms This table lists the key terms used in this chapter.

Term	Description
absolute path name	The full address or path to a file starting at root or /.
ASCII	A text based code for representing alphanumeric information in a computer.
environment variable	A variable that assigns default values within a specific environment. Sometimes called keyword variables or user-defined variables.
FTP command	A command used to transfer files between machines that have a direct connection.
host	The server in a client/server network that performs the system security, data storage, and major computing tasks.
ISAM	Indexed sequential access method. A two-part file organization in which records are stored in one file, while another file contains an index that shows the location of each record.
isops	A Sterling Gentran:Server utility used to unload and load selected ISAM files.
load	The process of converting a <i>.unl</i> file (ASCII file) back to an ISAM file format with a utility designed for this purpose.
destination environment	The area in your computer that runs Sterling Gentran:Server to process live data.

(Contd) Term	Description
source environment	The area in your computer that you use to: <ul style="list-style-type: none">▶ Test software upgrades,▶ Run data conversion programs, or▶ Test new maps, Trading Partnership records, and other Sterling Gentran:Server components.
.unl	The file extension for an ISAM file that has been converted to an ASCII file by a Sterling Gentran:Server unload utility.
unload	The process of converting an ISAM file to an ASCII file with a utility designed for this purpose.
unload/load utility	A Sterling Gentran:Server utility program that converts an ISAM file to an ASCII file and reconverts it after you have moved it to another machine.
user login	A UNIX ID with associated password and permissions.
user master file	The file that contains the Sterling Gentran:Server security system's user records.

Preparing the Destination Environment

Overview

Introduction

Indexed Sequential Access Method (ISAM) files must exist on the destination environment before you move files from the source environment. You must create empty files on the destination environment if none currently exist.

You should perform these tasks before you prepare your source environment in order to reduce the amount of time your system is unavailable to other users.

In this section

This section provides the procedure for creating empty ISAM and pattern files on the destination environment.

How to Create Empty ISAM Files

Introduction The load utility overwrites existing ISAM files; it does not create new files. Therefore, you must create empty ISAM and files on the destination environment before moving files from your source environment.

When to use Use this procedure to create an empty ISAM file when the destination machine does not have the ISAM files that you want to move.

Procedure Use this **isops** command to create an empty ISAM file.

```
isops -l -f <isams_prefix> </dev/null
```

where *<isams_prefix>* is the name of the ISAM file.

Example

Use this command to create an empty pattern file.

```
isops -l -f pat </dev/null
```

Note

You also can run **isops** from the Run Program option on the Tools menu.

Reference

See the *Command Reference* in the *IBM® Sterling Gentran:Server® for UNIX - Workstation Technical Reference Guide* for more information about running the **isops** program.

Preparing the Source Environment

Overview

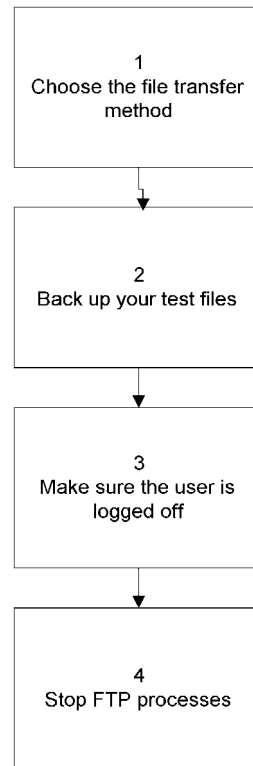
Introduction The process of moving files from one environment to another requires that the source environment be unavailable to all other users and clients. There are a number of steps you must take to ensure that no files or data are lost or damaged.

In this section This section provides the procedures and information you need to safely move files from your source environment. You must follow these procedures in order to prevent unnecessary work and to minimize the amount of time that the system is unavailable to other users.

Before you begin Before you begin preparing for the movement of files from one environment to another, you must complete the planning process explained in the chapter [Planning the Move](#) of this guide. If you have completed the planning process, you are ready to begin preparing your destination and source environments for the movement of files.

The Workstation Preparation Process

Process diagram This illustration shows the preparation process for the Workstation product.



Tasks in the preparation process

This table describes the tasks in the preparation process.

Task	Description
1	Choose the file transfer method. Reference See the section Choosing a File Transfer Method in the Planning the Move chapter for instructions.
2	Back up your source files. Reference See your operating system documentation for instructions.

(Contd) Task	Description
3	Set up and install Sterling Gentran:Server in the destination environment. Reference See your operating system documentation for instructions.
4	Stop FTP processes within the destination environment. Reference See your operating system documentation for instructions.

Moving Files

Contents	▶ Introduction	2
	Moving ASCII and Binary Files	
	▶ Overview	4
	▶ How to Move a Single ASCII or Binary File	6
	▶ How to Move Several ASCII or Binary Files	7
	Moving ISAM Files	
	▶ Overview	8
	▶ How to Unload an ISAM File	14
	▶ How to Load an ISAM File	15
	▶ How to Move ISAM Files to Another Machine	17
	Moving Trading Partnership Records and Related Files	
	▶ Overview	19
	▶ How to Move All Trading Partnership Records	22
	▶ How to Move Selected Trading Partnership Records	24
	▶ How to Move TRADACOMS Supplementary TP Records	28
	▶ How to Move Organization Records	30
	▶ Moving Contact Records	31
	▶ How to Move Standard Cross Reference Records	32
	Moving Maps and Map-related Files	
	▶ Overview	33
	▶ How to Move Application Integration Maps	34
	▶ Moving Other Process Files	35
	▶ Process File Checklist	35
	▶ How to Move DOS Batch Files	37

Introduction

In this chapter This chapter contains general instructions for how to move these types of files:

- ▶ ASCII files
- ▶ Binary files
- ▶ ISAM files

The chapter also contains specific instructions for moving:

- ▶ Trading Partnership records
- ▶ Trading Partnership-related files
- ▶ Maps and related files
- ▶ LOCKS files
- ▶ Custom shell scripts.

Key terms This table lists the key terms used in this chapter.

Term	Description
ASCII	A text-based code for representing alphanumeric information in a computer.
FTP	File Transfer Protocol. Protocol used to transfer files between computers.
ISAM	Indexed sequential access method--a two-part file organization in which records are stored sequentially in one part of the file, while another part of the file contains an index that shows the location of each record.
isops	A Sterling Gentrans:Server utility used to unload and load ISAM files.
load	The process of converting a <i>.unl</i> file (ASCII file) back to an ISAM file format with a utility designed for this purpose.
protocol	A standard set of rules, instructions, or formats for organizing data so it can be transferred between computer systems.

(Contd) Term	Description
.unl	The file extension for an ISAM file that has been converted to an ASCII file by the Sterling Gentran:Server unload utility.
unload	The process of converting an ISAM file to an ASCII file with a utility designed for this purpose.
unload/load utility	A Sterling Gentran:Server utility program that enables you to convert an ISAM file to an ASCII file and reconvert it after you have moved it to another machine.

Moving ASCII and Binary Files

Overview

What is an ASCII file?

ASCII is a national standard for encoding American computer data. It has a standard 7-bit code with a parity code used for the interchange of data between software and hardware.

An **ASCII file** is a data file that contains words, program sources, shell scripts, or other text that conforms to the ASCII standard. Most UNIX systems use ASCII text for recording character data.

What is an ASCII file?

A file containing a string of bits, initially utilized to define a file that contains codes not part of the ASCII set.

File extensions

Sterling Gentran:Server files with the following extensions are ASCII files.

- ▶ .unl
- ▶ .vmp
- ▶ .ddf
- ▶ .app
- ▶ .ig
- ▶ .scr
- ▶ .bat

Sterling Gentran:Server files with the following extensions are binary files.

- ▶ .map
- ▶ .tpl
- ▶ .TBL

**Moving ASCII
and binary files**

You move ASCII and binary files with copy commands and file transfer commands. The command you use depends on whether you are moving a file to another location on the same machine, to media, or to a linked machine.

How to Move a Single ASCII or Binary File

Introduction The command you use to move a single ASCII or binary file depends on whether you are moving a file to another location on the same machine or to a different machine.

Same PC In Windows Explorer or My Computer, click the file or folder you want to move.

Use your Windows® operating system's copy and paste options (**Edit** menu) or drag and drop functions to move the file into the destination folder.

Reference

See your Windows documentation for complete instructions on moving files.

PC to PC To move a file, you can use:

- ▶ Windows Explorer
- ▶ My Computer
- ▶ FTP software

Example

To move a file to an unlinked PC machine, in Windows Explorer or My Computer, select the file or folder you want to move. Use your Windows® operating system's copy and paste options (**Edit** menu) or drag and drop functions to move the files to media, such as a diskette. Then, copy the file from the media to the destination PC.

Note

If you use a tape as your transfer medium, use the tape software to transfer the file to and from the tape.

Reference

See your Windows documentation for complete instructions.

How to Move Several ASCII or Binary Files

Introduction You can move several ASCII or binary files at once. To do so, create a list of the files you want to move. You then issue a copy command, using the list name in place of the file name. This prompts the system to move all the files on the list.

Comment

To move an ISAM file, you must first use an unload utility to change it into an ASCII file.

PC to PC In Windows Explorer or My Computer, hold down the CTRL key, and then click the items you want to move.

Use your Windows® operating system's copy and paste options (**Edit** menu) or drag and drop functions to move the files to media, such as diskettes.

Note

If you use a tape as your transfer medium, use the tape software to transfer the files to and from the tape.

Moving ISAM Files

Overview

ISAM file extensions

Indexed Sequential Access Method (ISAM) files have a special type of file organization. You can recognize ISAM files by their *.dat* and *.idx* file name extensions.

File structure

In ISAM files, records are stored in one part of the file. Another part of the file contains an index that shows the location of each record for access purposes.

Unload and load utilities

You must change ISAM files to ASCII before moving them to another machine. Simple copy and FTP commands are unable to correctly handle ISAM files.

Sterling Gentran:Server provides utilities that change ISAM files to ASCII files (**unload**) and change ASCII files back to ISAM files (**load**).

Example

The utility used to unload and load Trading Partnership files is **tpmv**.

Reference

For a complete list of the unload/load utilities, see the chapter *Command Reference* in the *IBM® Sterling Gentran:Server® for UNIX - Workstation Technical Reference Guide*.

Specific unload and load utilities

The ISAM files below have unload and load utilities designed especially for them. The utilities are available from either the command line or a menu of the subsystem editor (for example, from the Tools menu in Trading Partnership Administration).

- ▶ Trading Partnership records
- ▶ Supplementary TRADACOMS Trading Partnership records
- ▶ Generic synonym lists
- ▶ Specific synonym lists
- ▶ Thesaurus lists
- ▶ Contact records
- ▶ Organization records
- ▶ Category records
- ▶ Archive data records.
- ▶ Trading Partnership cross-reference records
- ▶ XML Configuration records (if you have the XML translation option)

isops utility

The Sterling Gentran:Server **isops** utility is a generic unload and load utility that you can use to unload or load any ISAM file, including those for which specially designed utilities exist.

You can run **isops** from the command line or from the Run Programs command under the Main window Tools menu.

This table lists the file names defined for the **isops** command and the product to which it applies.

CAUTION

Use the same path on the source and destination machine for the <dm>_arch, edihist, mboxfr, and .q files.

File name	Definition	Product Level
apptptbl	Application Trading Partnership Rules Table	<ul style="list-style-type: none"> ▶ IBM® Sterling Gentran:Server® for UNIX - Workstation ▶ IBM® Sterling Gentran:Server® for UNIX
appxref	Trading Partner Code cross reference table for application files	<ul style="list-style-type: none"> ▶ IBM® Sterling Gentran:Server® for UNIX - Workstation ▶ IBM® Sterling Gentran:Server® for UNIX
catvalue	Trading Partner category values file	<ul style="list-style-type: none"> ▶ IBM® Sterling Gentran:Server® for UNIX - Workstation ▶ IBM® Sterling Gentran:Server® for UNIX
contact	Trading Partner contact file	<ul style="list-style-type: none"> ▶ IBM® Sterling Gentran:Server® for UNIX - Workstation ▶ IBM® Sterling Gentran:Server® for UNIX
dlname	The distribution list file	IBM® Sterling Gentran:Server® for UNIX
dm	The data manager configuration record file	IBM® Sterling Gentran:Server® for UNIX
<dm>_arch	The archive file for the specified data manager	IBM® Sterling Gentran:Server® for UNIX
.dmcfg	The data manager configuration file	IBM® Sterling Gentran:Server® for UNIX

(Contd) File name	Definition	Product Level
dstlst	The distribution mailbox list file	IBM® Sterling Gentran:Server® for UNIX
ds_name	The document reference number specifier file	IBM® Sterling Gentran:Server® for UNIX
ds_map	The EDI document reference number specifier mapping file	IBM® Sterling Gentran:Server® for UNIX
ds_tptbl	The EDI document reference number specifier TP file	IBM® Sterling Gentran:Server® for UNIX
ds_map_app	The APP document reference number specifier mapping file	IBM® Sterling Gentran:Server® for UNIX
ds_tptbl_app	The APP document reference number specifier TP file	IBM® Sterling Gentran:Server® for UNIX
edihist	The EDI history file	<ul style="list-style-type: none"> ▶ IBM® Sterling Gentran:Server® for UNIX - Workstation ▶ IBM® Sterling Gentran:Server® for UNIX
mbox	The Mailbox file	IBM® Sterling Gentran:Server® for UNIX
mboxfr	The Mailbox file register	IBM® Sterling Gentran:Server® for UNIX
org	The Trading Partner organization file	<ul style="list-style-type: none"> ▶ IBM® Sterling Gentran:Server® for UNIX - Workstation ▶ IBM® Sterling Gentran:Server® for UNIX
pat	Pattern file	IBM® Sterling Gentran:Server® for UNIX
patlst	Pattern list file	IBM® Sterling Gentran:Server® for UNIX
.q	The queue file	IBM® Sterling Gentran:Server® for UNIX

(Contd) File name	Definition	Product Level
.scrcfg	The script configuration file	IBM® Sterling Gentran:Server® for UNIX
stdin	Records are read from standard input (used with -l)	<ul style="list-style-type: none"> ▶ IBM® Sterling Gentran:Server® for UNIX - Workstation ▶ IBM® Sterling Gentran:Server® for UNIX
stdout	Records are written to standard output (used with -u)	<ul style="list-style-type: none"> ▶ IBM® Sterling Gentran:Server® for UNIX - Workstation ▶ IBM® Sterling Gentran:Server® for UNIX
stderr	Write all user messages to standard error	<ul style="list-style-type: none"> ▶ IBM® Sterling Gentran:Server® for UNIX - Workstation ▶ IBM® Sterling Gentran:Server® for UNIX
tp	The Trading Partner file	<ul style="list-style-type: none"> ▶ IBM® Sterling Gentran:Server® for UNIX - Workstation ▶ IBM® Sterling Gentran:Server® for UNIX
tpmisc	Miscellaneous Trading Partner information file	<ul style="list-style-type: none"> ▶ IBM® Sterling Gentran:Server® for UNIX - Workstation ▶ IBM® Sterling Gentran:Server® for UNIX
tprecon	Trading Partner reconciliation file	<ul style="list-style-type: none"> ▶ IBM® Sterling Gentran:Server® for UNIX - Workstation ▶ IBM® Sterling Gentran:Server® for UNIX
tradacom	The Tradacom file	<ul style="list-style-type: none"> ▶ IBM® Sterling Gentran:Server® for UNIX - Workstation ▶ IBM® Sterling Gentran:Server® for UNIX
trn	The transaction register file	IBM® Sterling Gentran:Server® for UNIX
xtable	The Standard Cross Reference Table file	<ul style="list-style-type: none"> ▶ IBM® Sterling Gentran:Server® for UNIX - Workstation ▶ IBM® Sterling Gentran:Server® for UNIX

XML translation option

If you have the XML translation option, you can also use isops to unload and load these files:

File name	Definition	Product Level
xmlspl1 xmlspl2 xmlspl3	Splitting Element Table files (by level)	<ul style="list-style-type: none">IBM® Sterling Gentran:Server® for UNIX - WorkstationIBM® Sterling Gentran:Server® for UNIX
xmltptbl	XML Trading Partnership Rules table	<ul style="list-style-type: none">IBM® Sterling Gentran:Server® for UNIX - WorkstationIBM® Sterling Gentran:Server® for UNIX
xmlxref	Trading Partnership Cross Reference table	<ul style="list-style-type: none">IBM® Sterling Gentran:Server® for UNIX - WorkstationIBM® Sterling Gentran:Server® for UNIX

How to Unload an ISAM File

Introduction

An unload utility converts an ISAM file format into an ASCII file so that you can move the file to another machine.

Specific unload and load utilities

The following ISAM files have unload and load utilities designed especially for them. The utilities are available from either the file editor or the command line.

- ▶ Trading Partnership records
- ▶ Supplementary TRADACOMS Trading Partnership records
- ▶ Contact records
- ▶ Organization records
- ▶ Standard cross-reference records
- ▶ XML Configuration records (if you have the XML translation option)

Reference

See the topic [How to Move All Trading Partnership Records](#) in this chapter for instructions on moving all your Trading Partnership records.

Using isops to unload an ISAM file

If a specific unload option is not available from the Sterling Gentran:Server menus or command line, you can use the **isops** command to unload the ISAM file. You can run **isops** from the command line or from the Run Programs command under the Main window Tools menu.

Procedure

Use this **isops** command to unload an ISAM file.

```
isops -u -f <filename> > <filename>.unl
```

Example

Use this **isops** command to unload the ds_name file to ds_name.unl.

```
isops -u -f ds_name > ds_name.unl
```

Reference

See the *Command Reference* chapter in the *IBM® Sterling Gentran:Server® for UNIX - Workstation Technical Reference Guide* for detailed descriptions of all **isops** options.

How to Load an ISAM File

Introduction A load utility converts a *.unl* file (ASCII file) back to an ISAM file format.

When to use Use this procedure after you have unloaded an ISAM file to a *.unl* ASCII file and moved the *.unl* file to the destination.

Specific unload and load utilities The ISAM files below have unload and load utilities designed especially for them. The utilities are available from either the file editor or the command line.

- ▶ Trading Partnership records
- ▶ Supplementary TRADACOMS Trading Partnership records
- ▶ Contact records
- ▶ Organization records
- ▶ XML Configuration records (if you have the XML translation option)

Reference

See the topic [How to Move All Trading Partnership Records](#) in this chapter for instructions on moving all your Trading Partnership records.

Using isops to load an ISAM file If a specific load option is not available from the Sterling Gentran:Server menus or command line, you can use the **isops** command to load the ISAM file. You can run **isops** from the command line or from the Run Programs command under the Main window Tools menu.

Procedure Use this **isops** command to load an a *.unl* file to an ISAM file.

```
isops -l -f <filename> < <filename>.unl
```

Example

Use this **isops** command to load the *ds_name.unl* file to *ds_name.dat/.idx*.

```
isops -l -f ds_name < ds_name.unl
```

Reference

See the *Command Reference* chapter in the *IBM® Sterling
Gentran:Server® for UNIX - Workstation Technical Reference Guide* for
detailed descriptions of all **isops** options.

How to Move ISAM Files to Another Machine

Introduction You can move either all records or some records in an ISAM file to another machine.

Procedure Use this procedure to move the records in an ISAM file.

Step	Action
1	<p>Go to the source environment and unload the ISAM files.</p> <p>System Response The utility reads the ISAM file and converts the data to an ASCII file and gives it an extension of <i>.unl</i>.</p> <p>Reference See the topic Moving Other Process Files in this chapter for instructions.</p> <p>Note Some unload utilities are available from a Sterling Gentran:Server menu or from the command line.</p>
2	<p>Do you want to move all the ISAM records in the file?</p> <ul style="list-style-type: none"> ▶ If YES, continue with Step 3. ▶ If NO, use an editor to remove the unwanted records from the <i>.unl</i> file and save your changes. <p>Reference See the <i>IBM® Sterling Gentran:Server® for UNIX - Workstation Technical Reference Guide</i> for selected ISAM file record layouts.</p>
3	<p>Using an ASCII file transfer method, send or copy the <i>.unl</i> file to the appropriate directory on the destination machine.</p>
4	<p>Log on to the destination machine and change the current directory to the Sterling Gentran:Server root directory for the destination environment.</p>

(Contd) Step	Action
5	<p>Does the ISAM file already exist in the destination environment?</p> <ul style="list-style-type: none">▶ If YES, continue with Step 6.▶ If NO, you must create an empty one. <p>Reference See the topic How to Create Empty ISAM Files in the chapter Preparing to Move Files for more information about creating empty ISAM files.</p>
6	<p>Load the <i>.unl</i> file to the appropriate directory.</p> <p>System Response Sterling Gentran:Server copies the file, converts the copy to an ISAM file, and appends the new file to the existing file.</p> <p>Reference See the topic How to Load an ISAM File in this chapter for instructions.</p>

Moving Trading Partnership Records and Related Files

Overview

Trading Partnership records

The Trading Partnership core records include inbound and outbound translation information. They also include all Trading Partnership information for X12 and EDIFACT translation except organization and contact information.

Files related to the Trading Partnership core records include:

- Category records
- Contact records
- Organization records
- Standard Cross Reference records
- Supplementary TRADACOMS Trading Partnership records

The load/unload file utility

To move Trading Partnership records from one machine to another, use the **load/unload utility**. This is the recommended method.

- The **unload utility** reads a Trading Partnership file (ISAM) and converts the data to an ASCII file that you can safely move. The ASCII files have the extension *.unl*.
- The **load utility** converts an ASCII file to its original ISAM format. ISAM files have an extension of *.dat* and *.idx*.

Moving options

You can move:

- All Trading Partnership records
- Selected records
- All TRADACOMS supplementary Trading Partnership records.

The topics within this section contain instructions for each type of move.

Before you begin

Before you begin moving trading partnership records, you must check the TP directory on the source and destination machines for the required ISAM files and create empty copies of any missing files. You must also open Trading Partnership Administration in Sterling Gentran:Server.

Checking ISAM files

You can open Trading Partnership Administration only if these files exist in the TP directory.

- ▶ tp.dat, tp.idx
- ▶ tpmisc.dat, tpmisc.idx
- ▶ tprecon.dat, tprecon.idx
- ▶ tradacom.dat, tradacom.idx
- ▶ contact.dat, contact.idx
- ▶ org.dat, ord.idx
- ▶ xtable.cat/idx

You must create empty versions of any missing files before opening Trading Partnership Administration.

Note

You can create settings only if these files exist in the TP directory.

- ▶ cattype.dat
- ▶ catvalue.dat, catvalue.idx

You must create empty versions of any missing files before creating settings.

Creating ISAM files

To create empty versions of required ISAM files, run the appropriate command line programs on the machine from which they are missing. This table describes the command line programs you must run to create the required ISAM files.

IF you want to create...	THEN run the...
Trading Partnership files: <i>tp.dat, tp.idx</i>	tpcreate command line program.
TRADACOM files: <i>tradacom.dat, tradacom.idx</i>	tccreate command line program.
Category files: <i>cattype.dat, catvalue.dat, catvalue.idx</i>	catcreat command line program.
Contact files: <i>contact.dat, contact.idx</i>	cocreate command line program

(Contd) IF you want to create...	THEN run the...
Organization files: <i>org.dat, org.idx</i>	orgcreat command line program
Standard Cross Reference Table files: <i>xtable.dat, xtable.idx</i>	xcreat command line program

Reference

See the topic [How to Create Empty ISAM Files](#) in the chapter [Preparing to Move Files](#) for more information about creating empty ISAM files.

Opening Trading Partnership Administration

You must open Sterling Gentran:Server Trading Partnership Administration on the source machine before unloading files. You unload files as part of the process by which you move files.

You will load the files after opening Sterling Gentran:Server Trading Partnership Administration on the destination machine.

To open Sterling Gentran:Server and the Trading Partnership Administration window, follow this procedure.

Step	Action
1	Open Sterling Gentran:Server
2	Click the Trading Partnership Administration icon.

How to Move All Trading Partnership Records

Names of Trading Partnership files

Your Trading Partnership file, *tp.dat* and *tp.idx*, is an indexed file that contains all the basic Trading Partnership records in your Sterling Gentran:Server environment. Additional Trading Partnership information is stored in these files:

- ▶ *tpmisc.dat* and *tpmisc.idx*
- ▶ *tradacom.dat* and *tradacom.idx*
- ▶ *tprecon.dat* and *tprecon.idx*

Moving a Trading Partner file

Use this procedure to move a Trading Partnership file.

Step	Action
1	Start a client that connects to the source environment.
2	Click on the Trading Partnership Administration icon from the Main window. System Response The Trading Partnership Administration window is displayed.
3	Select Tools .
4	Click Unload on the Tools menu.
5	Click Trading Partnership Record on the Unload submenu. System Response Sterling Gentran:Server copies the Trading Partnership files and converts the copies to ASCII files with these names: <ul style="list-style-type: none"> ▶ <i>tp.unl</i> ▶ <i>tpmisc.unl</i> ▶ <i>tradacom.unl</i> ▶ <i>tprecon.unl</i> <p>The system displays a message that indicates the number of records it unloaded.</p>
6	Using an ASCII transfer method, send or copy the <i>.unl</i> files to the trading partner directory on the destination machine.
7	Exit the client that is logged into the source environment.

(Contd) Step	Action
8	Start the client that connects to the destination environment and open Trading Partnership Administration.
9	Click Tools on the menu bar.
10	Click Load on the Tools menu.
11	Click Trading Partnership Record on the Load submenu. System Response Sterling Gentrans:Server copies the files, converts the copies to indexed Trading Partnership files, and appends the new files to the existing files. The system displays a message that indicates the number of records it loaded.

How to Move Selected Trading Partnership Records

Introduction

You can select and unload Trading Partnership records by Group Organization Code or Interchange Organization Code.

Moving Selected Records for Multiple Codes

When you move selected Trading Partnership records, Sterling Gentran:Server overwrites the existing ASCII Trading Partnership files.

- ▶ tp.unl
- ▶ tpmisc.unl
- ▶ tradacom.unl
- ▶ tprecon.unl
- ▶ contact.unl
- ▶ org.unl

You must copy the files for the first code to the destination machine and load them before moving the records for a second code.

Warning

Sterling Gentran:Server **overwrites** the existing ASCII Trading Partnership files each time you move selected records. These files can contain only the records for one code at a time when you move selected Trading Partnership records.

Procedure

Use this procedure to move selected Trading Partnership records from one PC to another or from one UNIX machine to another.

Step	Action
1	Select Unload from the Tools menu on the Trading Partnership Administration menu bar.
2	Click Selective Unload of the Trading Partnership . System Response The system displays the Selective Unload of Trading Partner Records dialog box.

(Contd) Step	Action
3	<p>Do you want to unload Trading Partnership records by Interchange Level Organization?</p> <ul style="list-style-type: none"> ▶ If YES, click the Interchange Level Organization option button and GO TO Step 5. ▶ If NO, continue with the next step.
4	Click the Group Level Organization option button.
5	<p>Click Selective Organization.</p> <p>System Response The system displays the Select Interchange/Group Organization To Unload Trading Partnerships dialog box.</p>
6	<p>Select the Interchange ID or Organization Code for the records you are moving, then click OK.</p> <p>System Response Sterling Gentran:Server copies the selected Trading Partnership records and converts the copies to ASCII files with these names:</p> <ul style="list-style-type: none"> ▶ tp.unl ▶ tpmisc.unl ▶ tradacom.unl ▶ tprecon.unl ▶ contact.unl ▶ org.unl <p>The system displays a message that indicates the number of records it unloaded.</p>
7	Using an ASCII transfer method, send or copy the <i>.unl</i> files to the Trading Partner directory on the destination machine.
8	Exit the client that is logged into the source environment or the Workstation computer that contains the environment.
9	Start the Windows client or Workstation computer that connects to the destination environment and open TP Administration.
10	Click Tools on the menu bar.
11	Click Load on the Tools menu.

(Contd) Step	Action
3	<p>Do you want to unload Trading Partnership records by Interchange Level Organization?</p> <ul style="list-style-type: none"> ▶ If YES, click the Interchange Level Organization option button and GO TO Step 5. ▶ If NO, continue with the next step.
4	Click the Group Level Organization option button.
5	<p>Click Selective Organization.</p> <p>System Response The system displays the Select Interchange/Group Organization To Unload Trading Partnerships dialog box.</p>
6	<p>Select the Interchange ID or Organization Code for the records you are moving, then click OK.</p> <p>System Response Sterling Gentran:Server copies the selected Trading Partnership records and converts the copies to ASCII files with these names:</p> <ul style="list-style-type: none"> ▶ tp.unl ▶ tpmisc.unl ▶ tradacom.unl ▶ tprecon.unl ▶ contact.unl ▶ org.unl <p>The system displays a message that indicates the number of records it unloaded.</p>
7	Using an ASCII transfer method, send or copy the <i>.unl</i> files to the Trading Partner directory on the destination machine.
8	Exit the client that is logged into the source environment or the Workstation computer that contains the environment.
9	Start the Windows client or Workstation computer that connects to the destination environment and open TP Administration.
10	Click Tools on the menu bar.
11	Click Load on the Tools menu.

(Contd) Step	Action
12	Click Trading Partnership Record on the Load submenu. System Response Sterling Gentran:Server copies the Trading Partner file, converts the copy to an indexed Trading Partnership file, and appends the new file to the existing file. The system displays a message that indicates the number of records it loaded.
13	Click Contact Records on the Load submenu. System Response Sterling Gentran:Server copies the file, converts the copy to an indexed Contact Records file, and appends the new file to the existing file. The system displays a message that indicates the number of records it loaded.
14	Click Organization Records on the Load submenu. System Response Sterling Gentran:Server copies the file, converts the copy to an indexed Organization Records file, and appends the new file to the existing file. The system displays a message that indicates the number of records it loaded.

How to Move TRADACOMS Supplementary TP Records

Introduction

Additional information is available for Trading Partnerships using TRADACOMS standards. This information is kept in supplementary records. The file containing this information is named *tradacom*.

Procedure

Use this procedure to move TRADACOMS supplementary Trading Partnership records from one machine to another.

Step	Action
1	<p>Unload the TRADACOMS supplementary Trading Partnership records by issuing this command from the command line: tcmv -u -cp <path to config file></p> <p>System Response Sterling Gentran:Server copies the TRADACOMS records and converts the copy to an ASCII file with the name <i>tradacom.unl</i>. The system displays a message indicating the number of records it unloaded.</p>
2	<p>Using an ASCII transfer method, send, or copy the <i>tradacom.unl</i> file to the trading partner directory on the destination machine.</p> <p>Reference See the topic How to Move a Single ASCII or Binary File in this chapter for instructions.</p>
3	<p>Log on to the destination machine and change the current directory to the Sterling Gentran:Server root directory.</p>

(Contd) Step	Action
4	<p>Load the <i>tradacom.unl</i> file to the trading partner directory on the destination PC by issuing this command from the DOS command line: tcmv -l -cp <path to config file></p> <p>System Response Sterling Gentran:Server copies the file, converts the copy to an indexed Trading Partnership file, and appends the new file to the existing file. The system displays a message indicating the number of records it loaded.</p> <p>Reference See the chapter <i>Command Reference</i> in the <i>IBM® Sterling Gentran:Server® for UNIX - Workstation Technical Reference Guide</i> for information about related parameters.</p>

How to Move Organization Records

Introduction

The file containing the Trading Partnership organization records is the organization file (*org.dat/idx*).

You must move the organization file if you move the Trading Partnership records to which they are related.

Moving Organization files to another machine

Use this procedure to move files from one machine to another.

Step	Action
1	Click Tools on the Trading Partnership Administration menu bar.
2	Select Unload from the Tools menu.
3	Select Organization Record from the Unload menu. System Response Sterling Gentran:Server copies the organization file and converts the copy to an ASCII file with the name <i>org.unl</i> . The system displays the number of records that it unloaded.
4	Using an ASCII transfer method, send or copy the <i>org.unl</i> file to the trading partner directory on the destination machine.
5	Exit the client that is logged into the source environment or the Workstation computer that contains the environment.
6	Start the Windows client or Workstation computer that connects to the destination environment and open Trading Partnership Administration.
7	Click Tools on the menu bar.
8	Click Load on the Tools menu.
9	Click Organization Record from the Tools menu. System Response Sterling Gentran:Server copies the file, converts the copy to an indexed organization file, and appends the new file to the existing file. The system displays the number of records that it loaded.

Moving Contact Records

Introduction The file containing contact records is the contact file (*contact.dat/idx*).

You must move this file if you move the Trading Partnership records to which they are related.

Moving contact records

Use this procedure to move files from one machine to another.

Step	Action
1	Click Tools on the Trading Partnership Administration menu bar.
2	Click Unload on the Tools menu.
3	Click Contact Record on the Unload submenu. System Response Sterling Gentran:Server copies the contact file and converts the copy to an ASCII file with the name <i>contact.unl</i> . The system displays the number of records that it unloaded.
4	Using an ASCII transfer method, send or copy the <i>contact.unl</i> file to the trading partner directory on the destination machine.
5	Exit the client that is logged into the source environment or the Workstation computer that contains the environment.
6	Start the Windows client or Workstation computer that connects to the destination environment and open Trading Partnership Administration.
7	Click Tools on the Trading Partnership Administration menu bar.
8	Click load on the Tools menu.
9	Click Contact Record on the Load submenu.

How to Move Standard Cross Reference Records

Introduction

The file containing the Standard Cross Reference Table records is the file (*xtable.dat/idx*).

Moving Standard Cross Reference files to another machine

Use this procedure to move files from one UNIX machine to another.

Step	Action
1	Click Tools on the Trading Partnership Administration menu bar.
2	Select Unload from the Tools menu.
3	Select Standard Cross Reference Records from the Unload menu. System Response Sterling Gentran:Server copies the file and converts the copy to an ASCII file with the name <i>xtable.unl</i> . The system displays the number of records that it unloaded.
4	Using an ASCII transfer method, send or copy the <i>xtable.unl</i> file to the destination machine.
5	Exit the client that is logged into the source environment.
6	Start the client that connects to the destination environment and open Trading Partnership Administration.
7	Click Tools on the Trading Partnership Administration menu bar.
8	Click Load on the Tools menu.
9	Click Standard Cross Reference Records from the Tools menu. System Response Sterling Gentran:Server copies the file, converts the copy to an indexed organization file, and appends the new file to the existing file. The system displays the number of records that it loaded.

Moving Maps and Map-related Files

Overview

-
- Introduction** Maps usually have one or more related files that must be moved along with the map. Related files include:
- ▶ Trading Partnership record
 - ▶ File definition

Procedure Use this procedure to move map files.

Step	Action
1	Move the map. Reference See the topic How to Move Application Integration Maps in this chapter for instructions.
2	Is the map for outbound processing? <ul style="list-style-type: none">▶ If YES, use an ASCII file transfer method to move the file description associated with the map.▶ If NO, you are finished moving the map file. Reference See the topic How to Move a Single ASCII or Binary File in this chapter for instructions.

How to Move Application Integration Maps

Introduction

Uncompiled and compiled Application Integration maps are stored as binary files (<mapname>.map). You can move both map types using a binary transfer method such as FTP using the binary (bi) switch.

Moving compiled maps

Use this procedure to move compiled maps from one machine to another.

Step	Action
1	<p>Using a binary transfer method, send or copy the following file(s) to the appropriate directories on the destination machine:</p> <ul style="list-style-type: none"> ▶ <map_directory>\<mapname>.tpl ▶ <map_directory>\<mapname>.map ▶ <file_definition>\<file_definition_name>.ddf. (Use ASCII transfer method) <p>Note The file definition is necessary for outbound maps in all Sterling Gentran:Server.</p>
2	<p>Did you transfer uncompiled map files?</p> <ul style="list-style-type: none"> ▶ If YES, compile the transferred maps. ▶ If NO, you are finished. <p>Reference See the <i>IBM® Sterling Gentran:Server® for UNIX - Workstation Application Integration Guide</i> for instructions on compiling maps.</p>

Moving Other Process Files

Process File Checklist

Introduction

Your organization may have created custom UNIX shell scripts, DOS batch files, component files, and user administration files to work with your Sterling Gentran:Server processes. When you move Sterling Gentran:Server files from one machine to another, you need to move these custom files, your extension configuration files, and any other files that affect Sterling Gentran:Server processing.

Checklist

Use this checklist to help identify other process files you may need to move. Add to the list any other files that affect your Sterling Gentran:Server data flow and processing.

Note

Many of the files in this list are used only with IBM® Sterling Gentran:Server® for UNIX. If you have IBM® Sterling Gentran:Server® for UNIX - Workstation, you will not have many of these file types

✓	File Type
	LOCKS files (both communication device and script name locks)
	Custom UNIX shell scripts or DOS batch files
	User administration files
	Custom Mail_Proc files
	Address lists
	Custom component files associated with custom shell process: <ul style="list-style-type: none"> ▶ C and C++ executable files ▶ Cross-reference tables ▶ Associated directory structure or permissions structure
	Communications software
	Custom Life Cycle entries and processes
	JCL/RCL files used to wrap-around files being sent to mainframe computers

✓	(Contd) File Type
	Logon and FTP address information, if configured differently between machines
	Extension entries and configuration files (for example, Baan, Oracle, SAP)
	Other Files

How to Move DOS Batch Files

Introduction DOS batch files are scripts or command files that your organization has created.

Procedure Use this table to select a file transfer method for a batch file.

IF the file is...	THEN use...
Compiled code	A binary file transfer method.
Not compiled code	An ASCII file transfer method.

Reference

See the section [Moving ASCII and Binary Files](#) in this chapter for instructions on transferring ASCII and binary files.

Cleaning Up After the Move

Contents	Overview
	▶ Introduction 2
	▶ The Clean-Up Process 3
	Procedures
	▶ How to Reset the Interchange and Group Control Numbers 5
	▶ How to Update the Interchange and Group ID Codes 6
	▶ How to Update the Interchange Control Header Field 7
	▶ How to Edit Files with Absolute Path Names 8

Overview

Introduction

In this chapter This chapter describes the tasks you must complete after you move files from a source environment to a destination environment.

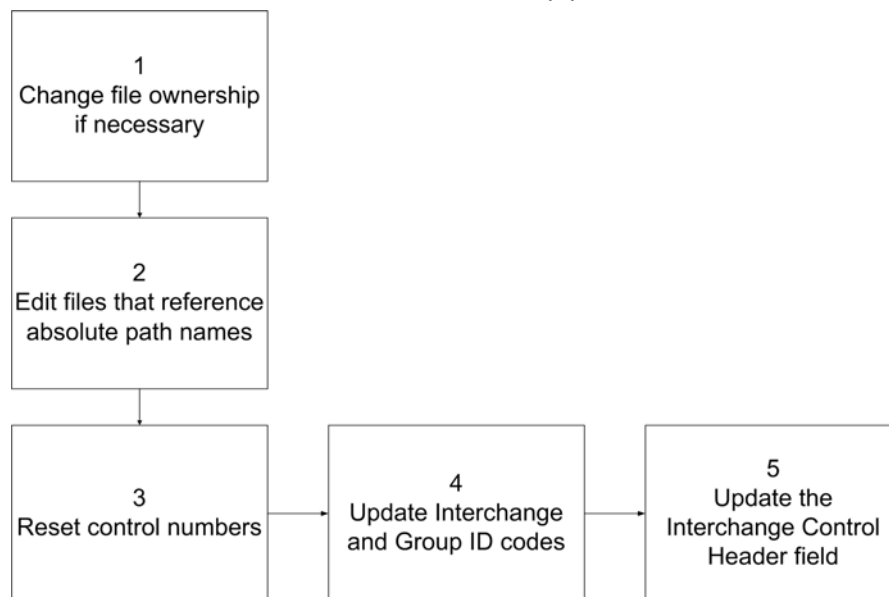
Key terms This table lists the key terms used in this chapter.

Term	Description
absolute path name	The full address or path to a file starting at root, /, or \.
control numbers	The counters used to keep track of the business documents that you send and receive.
Interchange and Group ID codes	Unique identifiers that are inserted into the Interchange envelope when data is translated.

The Clean-Up Process

Introduction After you move IBM® Sterling Gentran:Server® for UNIX - Workstation files from a source environment to a destination environment, you must clean up the destination area.

Process diagram This illustration shows the tasks in the clean-up process.



Tasks Use this task list to perform the clean-up tasks.

Task	Description
1	If necessary, change the ownership of the files you moved so that the user owner of the source environment and the destination environment are the same.
2	Edit files that reference absolute path names. Reference See the topic How to Edit Files with Absolute Path Names in this chapter for instructions.

(Contd) Task	Description
3	<p>Do you want to reset the Interchange and Group control numbers?</p> <ul style="list-style-type: none"> ▶ If YES, modify the Interchange Organization or Group Organization record. <p>Reference See the topic How to Reset the Interchange and Group Control Numbers in this chapter.</p> <ul style="list-style-type: none"> ▶ If NO, continue with Task 5.
4	<p>Do you want to update the Interchange and Group ID codes?</p> <ul style="list-style-type: none"> ▶ If YES, modify the Interchange Organization or Group Organization record. <p>Reference See the topic How to Update the Interchange and Group ID Codes in this chapter.</p> <ul style="list-style-type: none"> ▶ If NO, continue with Task 6.
5	<p>Do you want to update the Interchange Control Header field?</p> <ul style="list-style-type: none"> ▶ If YES, modify the field in the Trading Partnership record. <p>Reference See the topic How to Update the Interchange Control Header Field in this chapter.</p>

Procedures

How to Reset the Interchange and Group Control Numbers

Introduction The Interchange and Group Control Numbers are the counters used to track the business documents that you:

- Send to your trading partner
- Receive from the trading partner.

These control numbers increase when you create a Trading Partnership record in a source environment and send and receive source documents. To track the actual counts during destination processing, you should reset the control numbers after you move the Trading Partnership record to the destination environment.

Procedure Use this procedure to reset the control numbers.

Reference

If you have a very large number of Trading Partner records to edit, you may want to use the mass edit utility. See the *Working with Trading Partnerships* chapter in the *IBM® Sterling Gentran:Server® for UNIX - Workstation Application Integration User Guide* for instructions.

Step	Action
1	Start Sterling Gentran:Server.
2	Open Trading Partnership Administration.
3	Select the Interchange Organization or Group Organization record that you want to modify.
4	Select Selected Item from the Edit menu to display the record.
5	Modify the values in the Control numbers fields.
6	Click OK to save your changes.

How to Update the Interchange and Group ID Codes

Introduction The Interchange and Group ID codes are unique identifiers that Sterling Gentran:Server inserts into the Interchange envelope when it translates data.

If you used source Interchange and Group ID codes when you created the Trading Partnership record in the source environment, you must replace the codes after you move the Trading Partnership record to the destination environment.

Procedure Use this procedure to update the Interchange and Group ID codes.

Comment

If you have a very large number of Trading Partner records to edit, you may want to use the mass edit utility. See the *Working with Trading Partnerships* chapter in the *IBM® Sterling Gentran:Server® for UNIX - Workstation Application Integration User Guide* for instructions.

Step	Action
1	Start Sterling Gentran:Server.
2	Open Trading Partnership Administration.
3	Select the Interchange Organization or Group Organization record that you want to modify.
4	Select Selected Item from the Edit menu to display the record.
5	Modify the values in the Interchange IDs or Group IDs fields.
6	Click OK to save your changes.

How to Update the Interchange Control Header Field

Introduction The **Interchange Control Header** field defines the type of header segment used for the Interchange envelope.

Procedure Use this procedure to update the **Interchange Control Header** field.

Comment

If you have a very large number of Trading Partner records to edit, you may want to use the mass edit utility. See the *Working with Trading Partnerships* chapter in the *IBM® Sterling Gentran:Server® for UNIX - Workstation Application Integration User Guide* for instructions.

Step	Action
1	Start Sterling Gentran:Server.
2	Open the Trading Partnership record that you want to modify in the Trading Partnership Editor.
3	Click the Outbound EDI tab or the Outbound Acknowledgment tab. System Response Sterling Gentran:Server displays the outbound information.
4	Click the Edit button that is next to the Interchange Control Header field.
5	Enter P for Production (Destination) in the ISA15 Test/Production Indicator field.
6	Click OK to save your changes.

How to Edit Files with Absolute Path Names

Definition An **absolute path name** is the full address or path to a file starting at root, / or \.

Moving files with references to absolute path names

When you move files that reference absolute path names, you must edit the absolute path name to match the directory structure of the new environment. If you do not, Sterling Gentran:Server will not be able to find the file.

Files that may contain absolute path names

These types of files may contain absolute path names:

- ▶ Trading Partnership records
 - ▶ Batch files (*.bat*)
-

Procedure Use this procedure to edit absolute path names in files.

Step	Action
1	Open the file or record in the appropriate editor and check for any references to absolute path names.
2	Replace the absolute path with a relative path, a variable-based path, or another absolute path that matches your destination environment's directory structure. Example Relative Path: c:*\<file name> Absolute Path: c:\win\mainframe\<file name>.
3	Save your changes.

Notices

This information was developed for products and services offered in the U.S.A.

IBM may not offer the products, services, or features discussed in this document in other countries. Consult your local IBM representative for information on the products and services currently available in your area. Any reference to an IBM product, program, or service is not intended to state or imply that only that IBM product, program, or service may be used. Any functionally equivalent product, program, or service that does not infringe any IBM intellectual property right may be used instead. However, it is the user's responsibility to evaluate and verify the operation of any non-IBM product, program, or service.

IBM may have patents or pending patent applications covering subject matter described in this document. The furnishing of this document does not grant you any license to these patents. You can send license inquiries, in writing, to:

IBM Director of Licensing

IBM Corporation

North Castle Drive

Armonk, NY 10504-1785

U.S.A.

For license inquiries regarding double-byte character set (DBCS) information, contact the IBM Intellectual Property Department in your country or send inquiries, in writing, to:

Intellectual Property Licensing

Legal and Intellectual Property Law

IBM Japan Ltd.

1623-14, Shimotsuruma, Yamato-shi

Kanagawa 242-8502 Japan

The following paragraph does not apply to the United Kingdom or any other country where such provisions are inconsistent with local law:

INTERNATIONAL BUSINESS MACHINES CORPORATION PROVIDES THIS PUBLICATION "AS IS" WITHOUT WARRANTY OF ANY KIND, EITHER EXPRESS OR IMPLIED, INCLUDING, BUT NOT LIMITED TO, THE IMPLIED WARRANTIES OF NON-INFRINGEMENT, MERCHANTABILITY OR FITNESS FOR A PARTICULAR PURPOSE. Some states do not allow disclaimer of express or implied warranties in certain transactions, therefore, this statement may not apply to you.

This information could include technical inaccuracies or typographical errors. Changes are periodically made to the information herein; these changes will be incorporated in new editions of the publication. IBM may make improvements and/or changes in the product(s) and/or the program(s) described in this publication at any time without notice.

Any references in this information to non-IBM Web sites are provided for convenience only and do not in any manner serve as an endorsement of those Web sites. The materials at those Web sites are not part of the materials for this IBM product and use of those Web sites is at your own risk.

IBM may use or distribute any of the information you supply in any way it believes appropriate without incurring any obligation to you.

Licensees of this program who wish to have information about it for the purpose of enabling: (i) the exchange of information between independently created programs and other programs (including this one) and (ii) the mutual use of the information which has been exchanged, should contact:

IBM Corporation

J46A/G4

555 Bailey Avenue

San Jose, CA__95141-1003

U.S.A.

Such information may be available, subject to appropriate terms and conditions, including in some cases, payment of a fee.

The licensed program described in this document and all licensed material available for it are provided by IBM under terms of the IBM Customer Agreement, IBM International Program License Agreement or any equivalent agreement between us.

Any performance data contained herein was determined in a controlled environment. Therefore, the results obtained in other operating environments may

vary significantly. Some measurements may have been made on development-level systems and there is no guarantee that these measurements will be the same on generally available systems. Furthermore, some measurements may have been estimated through extrapolation. Actual results may vary. Users of this document should verify the applicable data for their specific environment.

Information concerning non-IBM products was obtained from the suppliers of those products, their published announcements or other publicly available sources. IBM has not tested those products and cannot confirm the accuracy of performance, compatibility or any other claims related to non-IBM products. Questions on the capabilities of non-IBM products should be addressed to the suppliers of those products.

All statements regarding IBM's future direction or intent are subject to change or withdrawal without notice, and represent goals and objectives only.

This information is for planning purposes only. The information herein is subject to change before the products described become available. This information contains examples of data and reports used in daily business operations. To illustrate them as completely as possible, the examples include the names of individuals, companies, brands, and products. All of these names are fictitious and any similarity to the names and addresses used by an actual business enterprise is entirely coincidental.

COPYRIGHT LICENSE:

This information contains sample application programs in source language, which illustrate programming techniques on various operating platforms. You may copy, modify, and distribute these sample programs in any form without payment to IBM, for the purposes of developing, using, marketing or distributing application programs conforming to the application programming interface for the operating platform for which the sample programs are written. These examples have not been thoroughly tested under all conditions. IBM, therefore, cannot guarantee or imply reliability, serviceability, or function of these programs. The sample programs are provided "AS IS", without warranty of any kind. IBM shall not be liable for any damages arising out of your use of the sample programs.

Each copy or any portion of these sample programs or any derivative work, must include a copyright notice as follows:

© IBM 2011. Portions of this code are derived from IBM Corp. Sample Programs.

© Copyright IBM Corp. 2011.

If you are viewing this information softcopy, the photographs and color illustrations may not appear.

Trademarks

IBM, the IBM logo, and ibm.com are trademarks or registered trademarks of International Business Machines Corp., registered in many jurisdictions

worldwide. Other product and service names might be trademarks of IBM or other companies. A current list of IBM trademarks is available on the Web at "[Copyright and trademark information](http://www.ibm.com/legal/copytrade.shtml)" at www.ibm.com/legal/copytrade.shtml.

Adobe, the Adobe logo, PostScript, and the PostScript logo are either registered trademarks or trademarks of Adobe Systems Incorporated in the United States, and/or other countries.

IT Infrastructure Library is a registered trademark of the Central Computer and Telecommunications Agency which is now part of the Office of Government Commerce.

Intel, Intel logo, Intel Inside, Intel Inside logo, Intel Centrino, Intel Centrino logo, Celeron, Intel Xeon, Intel SpeedStep, Itanium, and Pentium are trademarks or registered trademarks of Intel Corporation or its subsidiaries in the United States and other countries.

Linux is a registered trademark of Linus Torvalds in the United States, other countries, or both.

Microsoft, Windows, Windows NT, and the Windows logo are trademarks of Microsoft Corporation in the United States, other countries, or both.

ITIL is a registered trademark, and a registered community trademark of the Office of Government Commerce, and is registered in the U.S. Patent and Trademark Office.

UNIX is a registered trademark of The Open Group in the United States and other countries.

Java and all Java-based trademarks and logos are trademarks or registered trademarks of Oracle and/or its affiliates.

Cell Broadband Engine is a trademark of Sony Computer Entertainment, Inc. in the United States, other countries, or both and is used under license therefrom.

Linear Tape-Open, LTO, the LTO Logo, Ultrium and the Ultrium Logo are trademarks of HP, IBM Corp. and Quantum in the U.S. and other countries.

Connect Control Center®, Connect:Direct®, Connect:Enterprise, Gentran®, Gentran:Basic®, Gentran:Control®, Gentran:Director®, Gentran:Plus®, Gentran:Realtime®, Gentran:Server®, Gentran:Viewpoint®, Sterling Commerce™, Sterling Information Broker®, and Sterling Integrator® are trademarks or registered trademarks of Sterling Commerce, Inc., an IBM Company.

Other company, product, and service names may be trademarks or service marks of others.

Index

A

- absolute path name 7-8
- ASCII 6-4
 - file extensions 6-4
- ASCII files
 - moving overview 6-4
 - moving several at once 6-7

C

- clean-up process 7-3
- contact records
 - moving 6-31
- control numbers
 - resetting 7-5

D

- directory tree
 - problems with copying 3-3
- documentation conventions 1-xiv

F

- file checklist 4-15
- file description
 - moving 6-33
- file representations 4-7, 4-8
 - XML translation option 4-10
- file transfer method
 - choosing 4-12
- file transfer methods 4-7, 4-10
- file transfer types 4-7
- files
 - identifying those to move 4-13

G

- group control number
 - resetting 7-5
- Group ID code
 - updating 7-6

I

- Interchange Control Header field 7-7
 - updating 7-7
- Interchange control number
 - resetting 7-5
- Interchange ID code

- updating 7-6
- ISAM files 3-4
 - conversion utilities 4-10
 - creating empty 5-5
 - extensions 6-8
 - isops utility and 6-10
 - loading 6-15
 - moving overview 6-8
 - moving to another machine 6-17
 - structure 6-8
- isops utility 6-10
 - loading an ISAM file with 6-15
 - unloading an ISAM file with 6-14
 - using to create empty ISAM file 5-5

L

- load utility 4-11, 6-8
- log files 1-1

M

- map-related files
 - deciding which to move 4-13
 - moving overview 6-33
- maps
 - moving 6-34
 - moving overview 6-33
- Messages
 - alphabetical order (not starting with variables) 2-64
 - alphabetical order (starting with variables) 2-60
 - message conventions 2-3
 - numerical order 2-4
- moving
 - all Trading Partnership records 6-22
 - contact records 6-31
 - maps 6-34
 - organization records 6-30
 - selected Trading Partnership records 6-24
- moving files
 - selecting a time for 4-18
- moving Standard Cross Reference records 6-32
- moving TRADACOMS supplementary TP records 6-28

O

org.unl 6-30
organization records
 moving 6-30

P

path name
 absolute 7-8
planning process 4-3
preparation process 5-7
process file checklist 6-35
production environment
 describing 4-5

S

Standard Cross Reference records
 moving 6-32

T

tcmv -l command 6-29

tcmv -u command 6-28
temporary files 1-1
test environment
 describing 4-5
tradacom.unl 6-28
TRADACOMS supplementary TP records
 moving 6-28
Trading Partnership core records 6-19
Trading Partnership records
 moving all 6-22
 moving options 6-19
 moving selected 6-24
Trading Partnership-related files
 deciding which to move 4-14
transferring files
 methods for 4-10

U

UNIX Error Codes 2-100
unload utility 4-10, 6-8