

Gentran:Server[®] for Windows[®]

**Connect:Direct[®] Gateway
Configuration Guide**

Version 5.1

Sterling Commerce
An IBM Company

Copyright Notice

Gentran:Server for Windows

© Copyright 1995–2005
Sterling Commerce, Inc.
ALL RIGHTS RESERVED

Sterling Commerce Software Trade Secret Notice

THE GENTRAN:SERVER FOR WINDOWS SOFTWARE ("STERLING COMMERCE SOFTWARE") IS THE CONFIDENTIAL AND TRADE SECRET PROPERTY OF STERLING COMMERCE, INC., ITS AFFILIATED COMPANIES OR ITS OR THEIR LICENSORS, AND IS PROVIDED UNDER THE TERMS OF A LICENSE AGREEMENT. NO DUPLICATION OR DISCLOSURE WITHOUT PRIOR WRITTEN PERMISSION. RESTRICTED RIGHTS.

This documentation, the Sterling Commerce Software it describes, and the information and know-how they contain constitute the proprietary, confidential and valuable trade secret information of Sterling Commerce, Inc., its affiliated companies or its or their licensors, and may not be used for any unauthorized purpose, or disclosed to others without the prior written permission of the applicable Sterling Commerce entity. This documentation and the Sterling Commerce Software that it describes have been provided pursuant to a license agreement that contains prohibitions against and/or restrictions on their copying, modification and use. Duplication, in whole or in part, if and when permitted, shall bear this notice and the Sterling Commerce, Inc. copyright notice.

As and when provided to any governmental entity, government contractor or subcontractor subject to the FARs, this documentation is provided with RESTRICTED RIGHTS under Title 48 CFR 52.227-19. Further, as and when provided to any governmental entity, government contractor or subcontractor subject to DFARs, this documentation and the Sterling Commerce Software it describes are provided pursuant to the customary Sterling Commerce license, as described in Title 48 CFR 227-7202 with respect to commercial software and commercial software documentation.

These terms of use shall be governed by the laws of the State of Ohio, USA, without regard to its conflict of laws provisions. If you are accessing the Sterling Commerce Software under an executed agreement, then nothing in these terms and conditions supersedes or modifies the executed agreement.

Product names mentioned herein may be trademarks and/or registered trademarks of their respective companies. Gentran and Gentran:Server are registered trademarks of Sterling Commerce, Inc.

Third Party Software:

Portions of the Sterling Commerce Software may include products, or may be distributed on the same storage media with products, ("Third Party Software") offered by third parties ("Third Party Licensors").

Warranty Disclaimer

This documentation and the Sterling Commerce Software which it describes are licensed either "AS IS" or with a limited warranty, as set forth in the Sterling Commerce license agreement. Other than any limited warranties provided, NO OTHER WARRANTY IS EXPRESSED AND NONE SHALL BE IMPLIED, INCLUDING THE WARRANTIES OF MERCHANTABILITY AND FITNESS FOR USE OR FOR A PARTICULAR PURPOSE. The applicable Sterling Commerce entity reserves the right to revise this publication from time to time and to make changes in the content hereof without the obligation to notify any person or entity of such revisions or changes.

The Third Party Software is provided 'AS IS' WITHOUT ANY WARRANTY AND ANY EXPRESSED OR IMPLIED WARRANTIES, INCLUDING BUT NOT LIMITED TO, THE IMPLIED WARRANTIES OF MERCHANTABILITY, AND FITNESS FOR A PARTICULAR PURPOSE ARE DISCLAIMED. FURTHER, IF YOU ARE LOCATED OR ACCESSING THIS SOFTWARE IN THE UNITED STATES, ANY EXPRESS OR IMPLIED WARRANTY REGARDING TITLE OR NON-INFRINGEMENT ARE DISCLAIMED.

Table of Contents

Preface	About This Guide	
	▶ Introduction	iv
	▶ Description of Contents	v
	▶ Getting Support	vi
Chapter 1	Connect:Direct Gateway Overview	
	▶ Overview	1-2
	▶ Connect:Direct Gateway	1-3
	▶ Connect:Direct Gateway Mailboxes	1-4
	▶ Gateway Message Flow	1-5
Chapter 2	Configuring Communications	
	▶ Introduction	2-2
	Properties	2-4
	▶ Connect:Direct Gateway	2-4
	▶ Connect:Direct Client Connection Utility	2-6
	▶ Connect:Direct Mailbox Properties	2-10
	▶ Mailbox Properties	2-17
	Procedures	2-21
	▶ Configuration process	2-21
	▶ How to Configure Your Connect:Direct Gateway	2-22
	▶ How to Create Connect:Direct Gateway Mailboxes	2-25
	▶ How to Modify Mailbox Properties	2-28
	▶ How to Use the EAITrigger Program	2-29
	▶ How to Troubleshoot Common Errors	2-32

About This Guide

Contents

- ▶ Introductioniv
 - ▶ Description of Contentsv
 - ▶ Getting Supportvi
-

Introduction

Overview

This manual contains the tasks you must follow to:

- configure the Gentran:Server Connect:Direct Gateway
- create Connect:Direct Gateway mailboxes

Intended audience

The intended audience for this manual is:

- Gentran:Server system administrators
- advanced Connect:Direct users

Prerequisite knowledge

The audience using this software should be familiar with:

- Your operating system
 - Communications protocols
 - Connect:Direct functionality
-

Description of Contents

Introduction

This guide is organized into the tasks that you complete when configuring communications for the Connect:Direct Gateway.

Organization of chapters

The guide is organized into chapters. A brief description of each chapter's contents follows.

- About This Guide explains the content, organization, and conventions in this guide.
 - Connect:Direct Gateway Overview provides a high-level overview of the Connect:Direct Gateway.
 - Configuring Communications explains the process for configuring Connect:Direct Gateway communications. This chapter also provides the procedures you must follow to configure your Connect:Direct Gateway Mailboxes.
-

Getting Support

Introduction Sterling Commerce's Gentran:Server software is supported by trained product support personnel who are available to help you with product questions or concerns.

Note

Gentran:Server Customer Support does not support non-Sterling Commerce products (e.g., SQL Server, Oracle, etc.), but can assist you in configuring non-Sterling Commerce products to work with Gentran:Server.

Phone number For assistance, please refer to your *Getting Started Guide* to determine which support phone number you should use.

Before calling support

To help us provide prompt service, we ask that you do the following:

- Attempt to recreate any problem that you encounter and record the exact sequence of events.
- When you call product support, you should be prepared to provide us with the information below.

Information	Description
Identification	Your company name, your name, telephone number and extension, and the case number (if the question refers to a previously reported issue).
System Configuration	The Gentran:Server version (and any service packs installed) and information about the primary Gentran system controller and all machines experiencing problems, including: the Windows operating system version, amount of memory, available disk space, database version, Microsoft Data Access (MDAC) version, and Internet Explorer version. Also, please describe any recent changes in your hardware, software, or the configuration of your system.
System Data Store	Which machines contain folders in the system data store?
Error Messages	Record the exact wording of any error messages you receive and the point in the software where the error occurred, as well as any log files.
Attempted Solutions	Record any steps that you took attempting to resolve the problem and note all the outcomes, and provide an estimate on how many times the problem occurred and whether it can be reproduced.

Accessing the Sterling Commerce Support Web Site

The Sterling Commerce Customer Support Web Site contains valuable information about getting support for Gentran:Server for Windows, including the:

- scope of support services
- customer support policies
- call prioritizing
- customer support phone directory
- how to create new Support on Demand cases
- how to check the status of Support on Demand cases
- how to add information to Support on Demand cases

The Customer Support Web Site is constantly updated and all Sterling Commerce customers have access to it. This web site also contains the most recent product updates and is a valuable source of product information.

Reference

Refer to the *Getting Started Guide* for information on how to access the Customer Support World Wide Web Site.

Documentation

The Customer Support Web Site contains a documentation library, which has the entire Gentran:Server for Windows documentation set. You can download the product manuals in PDF format from this library at any time.

Connect:Direct Gateway Overview

Contents

- ▶ Overview 1 - 2
 - ▶ Connect:Direct Gateway 1 - 3
 - ▶ Connect:Direct Gateway Mailboxes 1 - 4
 - ▶ Gateway Message Flow 1 - 5
-

Overview

In this chapter

This chapter provides you with a high-level overview of the Gentran:Server Connect:Direct Gateway.

What is Connect:Direct?

Connect:Direct is point-to-point file transfer software that manages how information is passed between distributed applications.

The local Connect:Direct server is a Windows service that transfers files, invokes programs, and submits other work to Connect:Direct. The remote Connect:Direct server runs on any platform that Connect:Direct supports.

Connect:Direct relies on a Process (a series of statements) to initiate system activity. Each Process contains two nodes:

- A Primary Node (Pnode) - the node on which a Connect:Direct Process is submitted.
 - Secondary Node (Snode) - interacts with the Pnode when a Process is executed.
-

What is a Gateway?

A Gateway is a software component that controls the transmission of messages between two parties. The gateway is responsible for using the correct protocols to transfer messages between the sender and receiver.

You are responsible for defining the properties of the gateways that you use for transferring messages.

What is a Mailbox?

A mailbox stores messages until those messages are transferred to a recipient application. You are responsible for creating mailboxes. When you create mailboxes, you associate the mailbox with a gateway. The properties that you define for each mailbox determine how messages are transferred from or to your application via the gateway.

Connect:Direct Gateway

Introduction

The Connect:Direct Gateway defines the relationships between the Mailbox Server and the Connect:Direct file exchange system.

Configuring the Gateway

You must configure the Connect:Direct Gateway before you can begin transferring or receiving messages. When you configure the gateway, you define the:

- Node Name
- User ID and its associated password

Reference

See *Configuring Communications*, chapter 2 of this guide, for more information about configuring the Connect:Direct Gateway.

Connect:Direct Gateway Mailboxes

Introduction

In addition to gateway properties, you must also configure Send and/or Receive properties for Connect:Direct mailboxes.

Reference

See *Configuring Communications*, chapter 2 of this guide, for more information about configuring the Connect:Direct mailboxes.

Gateway Message Flow

Introduction

When a message is sent from the Connect:Direct Gateway to the Connect:Direct server, subject information is updated to include the:

- ▶ Connect:Direct Process number
- ▶ Connect:Direct Process name
- ▶ Connect:Direct Submitter ID
- ▶ Connect:Direct Node name

Connect:Direct uses this information to uniquely identify the Connect:Direct process and to retrieve statistics (audit) information using the Statistics Monitor in the Connect:Direct Requestor.

Message status

When a message is sent to the Connect:Direct Gateway, the message status is changed to “Sent.” When the Connect:Direct Gateway submits a process to the Connect:Direct server, the message status is changed to “Sent Third-Party.” When the Connect:Direct process completes, the message status is changed to “Delivered” (if the process was successful) or to “Delivery Failed” (if the process was unsuccessful.).

Related topic

See Tracking Messages in the *Communications User's Guide* for more information.

Configuring Communications

Contents	<ul style="list-style-type: none"> ▶ Introduction 2 - 2
Properties2 - 4
<ul style="list-style-type: none"> ▶ Connect:Direct Gateway 2 - 4 ▶ Connect:Direct Client Connection Utility 2 - 6 ▶ Connect:Direct Mailbox Properties 2 - 10 ▶ Mailbox Properties 2 - 17 	
Procedures2 - 21
<ul style="list-style-type: none"> ▶ Configuration process 2 - 21 ▶ How to Configure Your Connect:Direct Gateway 2 - 22 ▶ How to Create Connect:Direct Gateway Mailboxes 2 - 25 ▶ How to Modify Mailbox Properties 2 - 28 ▶ How to Use the EAITrigger Program 2 - 29 ▶ How to Troubleshoot Common Errors 2 - 32 	

Introduction

In this chapter This chapter describes the tasks that you must complete to configure your Connect:Direct Gateway and Connect:Direct Gateway Mailbox.

Key Terms This table describes key terms used in this chapter.

Term	Description
Gateway	Gateways are software components that control the transmission of messages between two parties. The gateway is responsible for using the correct protocols to transfer messages between the sender and receiver.
CCU	The Client Connection Utility is used on the client side to configure client-to-server communications. This configuration includes the server name, IP address, User ID, and password.
Mailbox	A folder or set of folders used to store messages.
Connect:Direct	A point-to-point file transfer system.
Network Map	The configuration information for server-to-server communications, which is also referred to as netmap. The TCP/IP or SNA information for each node in the network is stored in the netmap. The netmap is configured through the Requester.
Pnode	The Primary node, on which a Connect:Direct Process is submitted.
Process	A text file that contains a Connect:Direct statement, which is created in a scripting language. Processes are submitted from the client.
Proxy	The component that defines the relationship between a user at a remote Connect:Direct node and a local User ID. The proxy removes the need to explicitly specify a User ID and password for the Snode in the process or on the submit command.
Requester	A client that sends commands to the Connect:Direct server, and then receives and displays server responses.
Snode	The node that interacts with the Pnode when a Process is executed.

(Continued on next page)

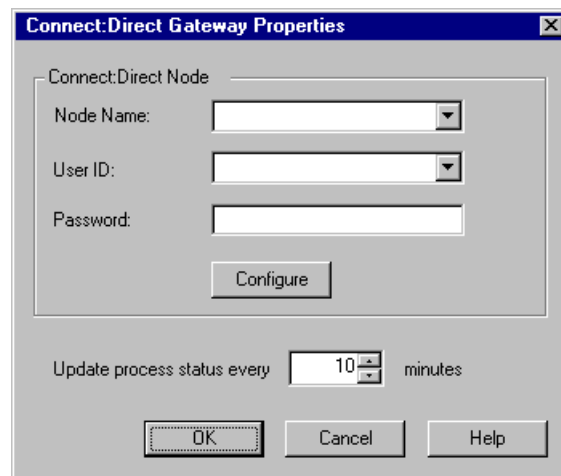
(Contd) Term	Description
TCQ	<p>The Transmission Control Queue is a job queue on the Connect:Direct server. The TCQ contains processes that have been submitted and consists of these four logical queues:</p> <ul style="list-style-type: none">▶ Wait▶ Exec▶ Hold▶ Timer

Properties

Connect:Direct Gateway

Introduction The Connect:Direct Gateway Properties dialog box defines the properties of the Connect:Direct Gateway.

Connect:Direct Gateway Properties This diagram illustrates the Connect:Direct Gateway Properties dialog box.



Parts and functions This table describes the parts of the Connect:Direct Gateway Properties dialog box and their functions.

Part	Function
Node name	Identifies the Connect:Direct server (node) to which the Connect:Direct Gateway is attached. Note A Node Name selection is required. If you have not configured a node, you are prompted to do so using the Client Connection Utility.

(Continued on next page)

(Contd) Part	Function
User ID	<p>Identifies a Connect:Direct user associated with the selected Node name. User IDs are defined for a node using the Client Connection Utility. Valid User IDs display as drop-down list items on the Gateway Properties dialog box.</p> <p>Note A User ID selection is required. If you have not configured a User ID, you are prompted to do so using the Client Connection Utility.</p>
Password	<p>Specifies password information (which displays as asterisks for added security) associated with the selected User ID.</p> <p>Note A password is required. If you have not configured a password, you are prompted to create one using the Client Connection Utility.</p>
Configure	<p>Launches Client Connection Utility. This enables you to create or modify nodes and User ID properties.</p>
Update the process status every	<p>Defines the time interval (in minutes) at which the Connect:Direct Gateway updates the status of messages being processed.</p>
OK	<p>Saves changes; exits dialog box.</p>
Cancel	<p>Cancels unsaved changes; exits dialog box.</p>
Help	<p>Launches the online Help system.</p>

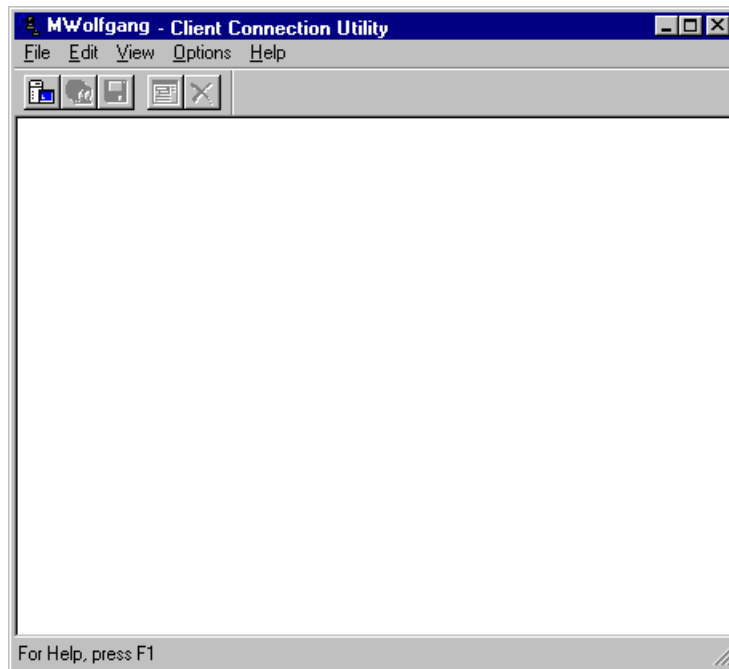
Connect:Direct Client Connection Utility

Introduction

The Client Connection Utility enables you to create or modify Connect:Direct node and User ID properties. These properties must be defined so that the Connect:Direct Gateway can connect to Connect:Direct.

Client Connection Utility

This diagram illustrates the Client Connection Utility dialog box.



Parts and functions

This table describes the parts of the Client Connection Utility dialog box and their functions.

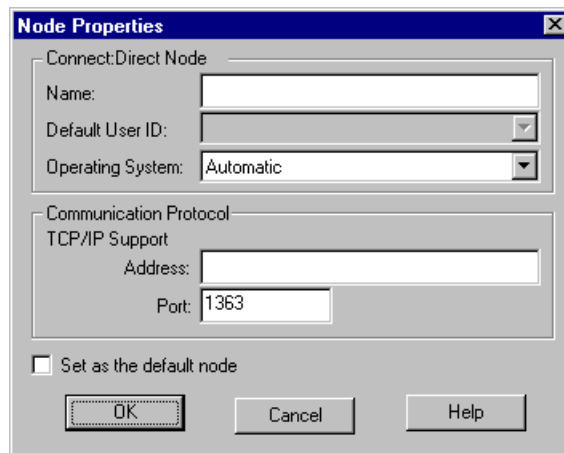
Part	Function
Menu Bar	Displays Client Connection Utility menu options. Those options include: <ul style="list-style-type: none"> • File • Edit • View • Options • Help

(Continued on next page)

(Contd) Part	Function
Toolbar	Displays Client Connection Utility toolbar items. Those items include: <ul style="list-style-type: none"> ▶ New Mode ▶ New User ▶ Save ▶ Properties ▶ Delete
Display Window	Displays a list of all configured nodes in the sequential order in which they were created. Individual Node entries can be expanded to display associated Users.

Node Properties

This diagram illustrates the Client Connection Utility Node Properties dialog box.



Parts and functions

This table describes the parts of the Client Connection Utility Node Properties dialog box and their functions.

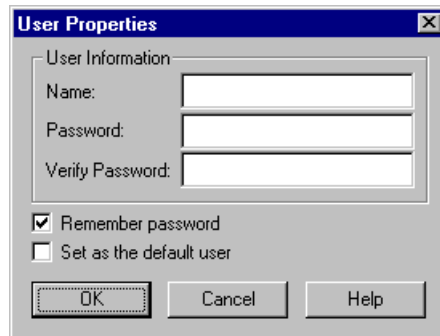
Part	Function
Name	Identifies a Connect:Direct server (node).
Default User ID	Displays the default User ID assigned to this node. If a User ID is not set as the default, this field displays as inactive.
Operating System	Defines the operating system associated with the node. The default setting is Automatic. <p style="text-align: right; color: green;">(Continued on next page)</p>



(Contd) Part	Function
Communications Protocol	Defines node communication protocol properties. Those properties include: <ul style="list-style-type: none"> Address - defines the TCP/IP address for the node to which the Connect:Direct Gateway submits processes. Port - defines the port for the node to which the Connect:Direct Gateway submits processes.
Set as the default node	When this option is selected, automatically populates the Logon dialog box with the name of this node. <p>Note The default node displays in bold type on the Client Connection Utility dialog box.</p>
OK	Saves changes; exits dialog box.
Cancel	Cancels unsaved changes; exits dialog box.
Help	Launches the online Help system.

User Properties

This diagram illustrates the Client Connection Utility User Properties dialog box.



Parts and functions

This table describes the parts of the Client Connection Utility User Properties dialog box and their functions.

Part	Function
Name	Identifies the User you want to associate with the node.
Password/ Verify Password	Defines (and confirms) the User password.

(Continued on next page)

(Contd) Part	Function
Remember Password	When this option is selected, it specifies that you want Connect:Direct to automatically reload specified password information.
Set as the default User	<p>Selecting this option identifies this user as the default user for a specific node.</p> <p>Notes</p> <ul style="list-style-type: none"> ▶ A default User value automatically displays in the Node Properties dialog in the Default User ID field of the Node Properties dialog box. When its associated node is selected as the Node Name of the Connect:Direct Gateway Properties dialog box, the default User ID displays in the User ID field of that dialog. ▶ The default user displays in bold type under its associated node in the Client Connection Utility.
OK	Saves changes; exits dialog box.
Cancel	Cancels unsaved changes; exits dialog box.
Help	Launches the online Help system.

Connect:Direct Mailbox Properties

Introduction The Send and Receive tabs of the Connect:Direct Mailbox Properties dialog box define the mailbox properties of the Connect:Direct Gateway.

Send tab This diagram illustrates the Send tab of Connect:Direct Mailbox Properties dialog box.

Parts and functions This table describes the parts of the Send tab of Connect:Direct Mailbox Properties dialog box and their functions.

Part	Function
Send messages from this mailbox	Specifies that you want to send messages from this mailbox.
Pnode	Identifies the primary node (server name). This value represents the Node Name selected on the Connect:Direct Gateway Properties dialog box.

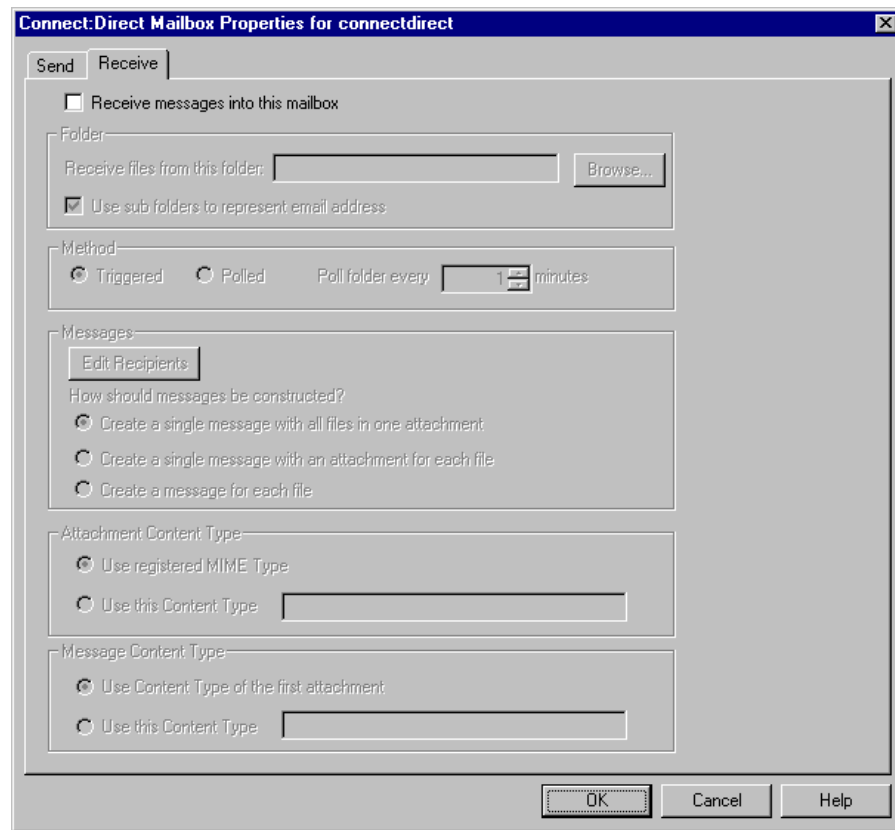
(Continued on next page)

(Contd) Part	Function
Snode	<p>Identifies a secondary node and its associated User ID and User password.</p> <p>Note You must specify an Snode Name, User ID, and Password unless you are using an existing process that has the Snode, User ID, and Password coded on the process statement or you are using a proxy on the remote Connect:Direct node.</p>
Process Options	<p>Specifies how you want to create the Connect:Direct process. Options are:</p> <ul style="list-style-type: none"> <p>▶ Create dynamic process - selection specifies that you want the Connect:Direct Gateway to create the process.</p> <ul style="list-style-type: none"> — Process Name - specifies the name of the process that you want the Connect:Direct Gateway to create. This name can be 1- to 8-characters. The default process name is CDADAPT. — Delete source file after successful copy - adds a step to the Connect:Direct process that checks the return code of the Copy, and then executes a Run Task to delete the source file. — Save process - allows a dynamic process to be saved in a file. The filename is the same as the process name with a .cdp extension (the default Process Name is cdapapt.cdp). This file is stored in specified Source File location. <p>Note This feature is only used for debug purposes. Each time the system creates a dynamic process, it overwrites a saved process file with the new process information.</p> <p>▶ Use existing process - enables you to select a previously created process from a file.</p> <ul style="list-style-type: none"> — File name - specifies the full path and filename to the existing process. The path and filename can be manually entered or you can use Browse to navigate to the location. <p style="text-align: right; color: green;">(Continued on next page)</p>

(Contd) Part	Function
Process Options (contd)	<ul style="list-style-type: none"> ▶ Check for completion status for minute(s) - The Connect:Direct Gateway checks the Connect:Direct TCQ every minute for the specified interval to determine whether the process is complete. <p>Note If the process does not complete in the specified amount of time, the status is checked based on the interval set in the Update process status field on the Connect:Direct Gateway Properties dialog box.</p>
Start Date	Specifies the day or date of when you want the process to start. The default is Day: TODAY.
Start Time	<p>Specifies whether you want the process to start immediately or a specific time.</p> <p>The default is Time: IMMEDIATE.</p>
Attachment Options	<p>Specifies how you want to send an attachment in a Connect:Direct process. Options are:</p> <ul style="list-style-type: none"> ▶ Append all attachments to a single file - specifies that you want all attachments appended to a single file. When this option is selected, you must designate the output filename. <p>Example cdgateway.txt</p> <ul style="list-style-type: none"> ▶ Put each attachment in a separate file - specifies that attachments should be transferred as multiple-copy items within the same process. <ul style="list-style-type: none"> — Filename Options - becomes active when you select Put each attachment into a separate file. Options are: <ul style="list-style-type: none"> —Use the original attachment filename - allows the original filename to be used as the output filename (default). <p style="text-align: right;">(Continued on next page)</p>

(Contd) Part	Function
Attachment Options (contd)	<p>—Use the following to build filename - output file is created with a specified prefix and extension.</p> <p>—Prefix - specifies the prefix for the output file.</p> <p>—Extension - specifies the extension for the output file.</p> <p>Note The filename that is created when the prefix and extension are combined with the message ID and unique number must be a valid name on the remote system.</p> <p>Example [prefix]messid_n.[extension]</p>
File Locations	<p>Specifies the path and filename of the source and destination files.</p> <ul style="list-style-type: none"> • Source file location - this file must be accessible by the Connect:Direct Gateway. • Destination file location - this may or may not be accessible by Connect:Direct Gateway. <p>Note If the Source or Destination File location is installed on an unmapped Windows network drive of a remote machine, you must use the Universal Naming Convention (UNC).</p> <p>Example \\cdirectserver\cdirect\temp\file1.txt</p> <p>Note All special characters required by a remote operating system to create a valid filename must be entered.</p> <p>Example (Windows) c:\test\</p>
OK	Saves changes; exits dialog box.
Cancel	Cancels unsaved changes; exits dialog box.
Help	Launches the online Help system.

Receive tab This diagram illustrates the Receive tab of Connect:Direct Mailbox Properties dialog box.



Parts and functions

This table describes the parts of the Receive tab of Connect:Direct Mailbox Properties dialog box and their functions.

Part	Function
Receive messages into this mailbox	Specifies that you want this mailbox to receive messages. (Continued on next page)

(Contd) Part	Function
Folder	<ul style="list-style-type: none"> ▶ Receive files from this folder - specifies the path and filename where you want the Connect:Direct Gateway to send files Mailbox Server. You can manually enter this information or use Browse to navigate to the location. <p>Note The Receive folder is only required if the Method in which you want Connect:Direct to receive files is set to Polled.</p> <p>If method in which you want Connect:Direct to receive files is set to Triggered, you can either type the name of receive folder in the Receive files from the folder field or in the EAITrigger command of the Run Task statement.</p> <ul style="list-style-type: none"> ▶ Use sub folders to represent email - specifies that you want the email value to be the same as that of a sub folder name value.
Method	<p>Specifies the method in which you want the Connect:Direct Gateway to receive files.</p> <ul style="list-style-type: none"> ▶ Triggered - uses the EAITrigger Program to send a command to Connect:Direct. The command notifies the Connect:Direct Gateway that there are files to retrieve. The gateway processes the files from the receive folder specified in the Receive files into this folder field or from the EAITrigger command of the Run Task statement. ▶ Polled - scans the receive folder at the specified interval. <ul style="list-style-type: none"> — Poll folder every minutes - denotes how often you want the Connect:Direct Gateway to scan the receive folder.
Messages	<p>Specifies message recipients and how you want to messages to be constructed.</p> <ul style="list-style-type: none"> ▶ Edit Recipient - launches the Edit Recipient dialog box. Enables you to add or modify recipients. ▶ How should this message be constructed? - specifies how you want to receive messages when more than one is in the Receive folder. Options are: <ul style="list-style-type: none"> — Create a single message with all files in one attachment. — Create a single message with an attachment for each file. — Create a message for each file. <p style="text-align: right; color: green;">(Continued on next page)</p>

(Contd) Part	Function
Attachment Content Type	<p>Specifies what you want as the content type for attachments received. Options are:</p> <ul style="list-style-type: none"> ▶ Use registered MIME type - specifies that you want to use a registered Multipurpose Internet Mail Extension (MIME) type. ▶ Use this Content Type - enables you to specify a Content Type.
Message Content Type	<p>Specifies what you want as the content type for messages received. Options are:</p> <ul style="list-style-type: none"> ▶ Use Content Type of the first attachment. ▶ Use this Content Type - enables you to specify a Content Type.
OK	Saves changes; exits dialog box.
Cancel	Cancels unsaved changes; exits dialog box.
Help	Launches the online Help system.

Mailbox Properties

Introduction The Mailbox Properties dialog box enables you to define the properties of the mailbox.

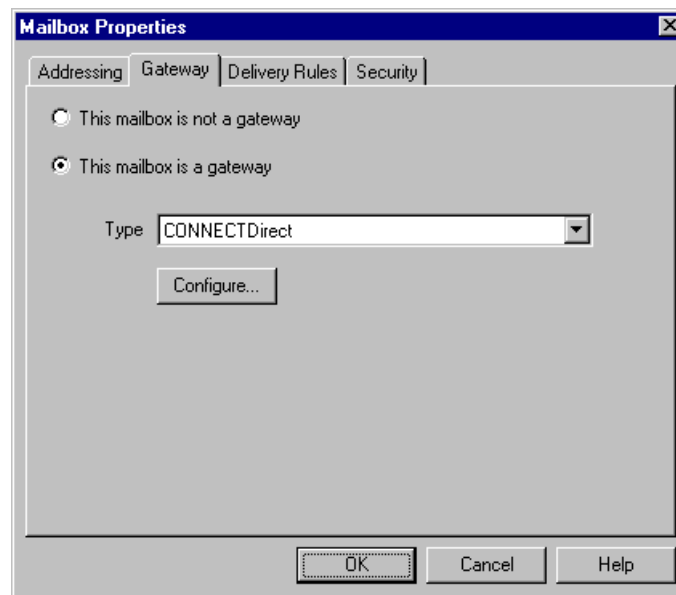
Addressing Tab This diagram illustrates the Addressing tab of the Mailbox Properties dialog box.



Parts and functions This table describes the parts of the Addressing tab of the Mailbox Properties dialog box and their functions.

Part	Function
Name	Defines the name of the mailbox.
Gentran Email address	Defines the Gentran e-mail address for messages sent from the mailbox.
OK	Saves changes; exits dialog.
Cancel	Closes dialog without saving changes.
Help	Accesses online help.

Gateway Tab This diagram illustrates the Gateway tab of the Mailbox Properties dialog box.



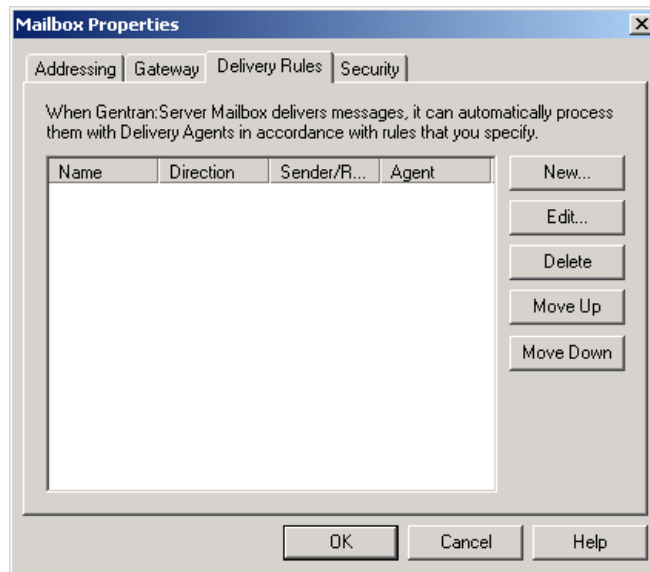
Parts and functions

This table describes the parts of the Gateway tab of the Mailbox Properties dialog box and their functions.

Part	Function
This mailbox is not a gateway	Specifies whether the mailbox is or is not a gateway. Options are:
This mailbox is a gateway	
Type	Specifies the type of gateway. Activated when the This mailbox is a gateway option is selected.
Configure	Enables you to configure properties for the gateway.
OK	Saves changes; exits dialog.
Cancel	Closes dialog without saving changes.
Help	Accesses online help.

Delivery Rules Tab

This diagram illustrates the Delivery Rules tab of the Mailbox Properties dialog box.



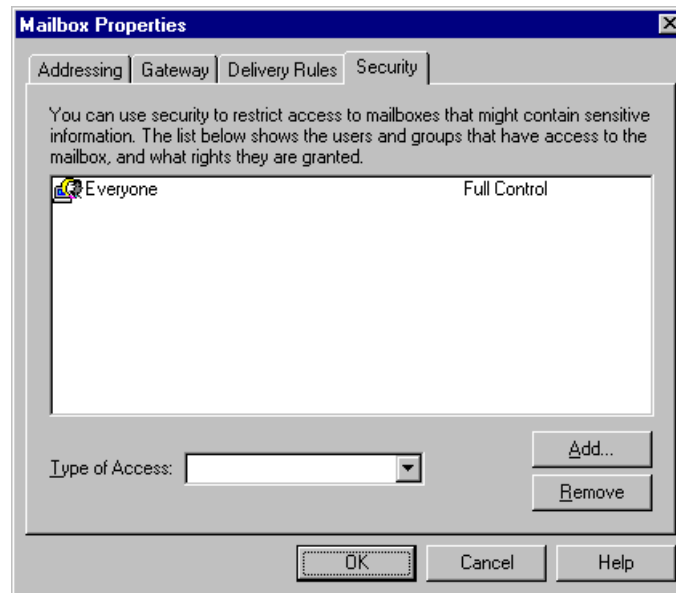
Parts and functions

This table describes the parts of the Delivery Rules tab of the Mailbox Properties dialog box and their functions.

Part	Function
Name	Defines the name of the Delivery Rule.
Direction	Identifies if the rule is run when sending or receiving a message.
Sender/Recipient	Identifies the mailbox of the sender or recipient. The mail address can be specified in addition to the mailbox name.
Agent	Identifies the name of the delivery agent to be run.
New	Enables you to create new Delivery Rules.
Edit	Enables you to edit existing Delivery Rules.
Delete	Enables you to delete Delivery Rules.
Move Up	Moves the selected Delivery Rule up in the processing order.
Move Down	Moves the selected Delivery Rule down in the processing order.
OK	Saves changes; exits dialog.
Cancel	Closes dialog without saving changes.
Help	Accesses online help.



Security Tab This diagram illustrates the Security tab of the Mailbox Properties dialog box.



Parts and functions

This table describes the parts of the Security tab of the Mailbox Properties dialog box and their functions.

Part	Function
(User list)	Defines users and groups that have access to mailbox.
Type of Access	Designates level at which a user can interact with a mailbox. Values are: <ul style="list-style-type: none"> ▶ Full control ▶ Read ▶ Write
Add	Enables you to grant users or groups mailbox access.
Remove	Enables you to remove user or group mailbox access.
OK	Saves changes; exits dialog.
Cancel	Closes dialog without saving changes.
Help	Accesses online help.

Procedures

Configuration process

Connect:Direct Gateway process

This table lists the stages in configuring communications for use with Connect:Direct Gateway.

Stage	Description
1	Install the Connect:Direct software. Reference Refer to the documentation that came with your Connect:Direct software for installation instructions.
2	Install the Gentran:Server Connect:Direct Gateway. Reference Refer to the <i>Gentran:Server Options Pack Installation Card</i> for more information.
3	Configure the Connect:Direct Gateway in Mailbox Server. Reference See <i>How to Configure Your Connect:Direct Gateway</i> on page 2 - 22 for more information.
4	Create the Connect:Direct Gateway Mailboxes that you intend to use. Reference See <i>How to Create Connect:Direct Gateway Mailboxes</i> on page 2 - 25 for more information.

How to Configure Your Connect:Direct Gateway

Introduction This gateway is used for sending and receiving messages through a Connect:Direct messaging system.

Before you begin Before you begin configuring your Connect:Direct Gateway you must configure your Connect:Direct messaging software

Reference

Refer to the documentation that came with your Connect:Direct messaging software for more information.

Procedure Use this procedure to configure your Connect:Direct Gateway.

Step	Action	
1	Start Mailbox Server Manager . System Response The system displays the Mailbox Server Manager.	
2	Select Connect:Direct from the Gateway folder icon.	
3	Right-click and select Properties to define the properties for this gateway.	
4	Use this table to determine your next step.	
	IF the system displays...	THEN continue with...
	A prompt stating that No Connect:Direct nodes have been configured,	Step 5
	The Connect:Direct Gateway Properties dialog box,	Step 23
5	Click OK to acknowledge the prompt. System Response The system displays the Client Connection Utility dialog box.	
6	From the File menu, select New Node . System Response The system displays the Node Properties dialog box.	
7	Enter the name of the Node.	

(Continued on next page)

(Contd) Step	Action
8	Enter the Communication Protocol information.
9	<p>Do you want to select this node as the default?</p> <ul style="list-style-type: none"> ▶ If yes, select the Set as the default node check box. Continue with the next step. ▶ If no, continue with the next step.
10	<p>Click OK to save your changes and to exit the dialog box.</p> <p>System Response You return to the Client Connection Utility dialog box. The node that you created lists in the window display.</p>
11	<p>Do you want to create additional nodes?</p> <ul style="list-style-type: none"> ▶ If yes, repeat Steps 6 to 10 for each additional node that you want to create. Continue with the next step. ▶ If no, continue with the next step.
12	Highlight the node for which you want to associate a user.
13	<p>From the File menu, select New User.</p> <p>System Response The system displays the User Properties dialog box.</p>
14	Enter the user name in the Name field.
15	Enter a user password in the Password field.
16	Re-type the user password in the Verify Password field.
17	<p>Select the Remember password option.</p> <p>Note Gentran:Server requires a password to log on to the Connect:Direct server. As a result, you must select the Remember password option.</p>
18	<p>Do you want to specify this user as the default user for the associated node?</p> <ul style="list-style-type: none"> ▶ If yes, select the Set as the default user check box. Continue with the next step. ▶ If no, continue with the next step.
19	<p>Click OK to save your changes and to exit the dialog box.</p> <p>System Response You return to the Client Connection dialog box. The user that you created displays under its associated node.</p> <p style="text-align: right;">(Continued on next page)</p>

(Contd) Step	Action
20	<p>Do you want to create additional users?</p> <ul style="list-style-type: none"> ▶ If yes, repeat Steps 12 to 19 for each additional user that you want to create. <p>Note If more than one user has been set as the Default user, the system recognizes the most recent User ID entered as the default.</p> <ul style="list-style-type: none"> ▶ If no, continue with the next step.
21	From the File menu, select Save .
22	<p>From the File menu, select Exit.</p> <p>System Response You exit the Client Connection Utility and return to the Connect:Direct Gateway Properties dialog box.</p>
23	Select the desired Node Name and User ID from the appropriate lists in the Connect:Direct Gateway Properties dialog box.
24	<p>Do you want to specify a time interval of when the Connect:Direct Gateway should check for messages in the Inbox?</p> <ul style="list-style-type: none"> ▶ If yes, specify a time interval in the Update process status every minute(s) box. ▶ If no, continue with the next step.
25	<p>Click OK to complete the configuration of this gateway.</p> <p>Note You are now ready to create gateway mailboxes.</p> <p>Reference See <i>How to Create Connect:Direct Gateway Mailboxes</i> on page 2 - 25 for instructions.</p>

How to Create Connect:Direct Gateway Mailboxes

Introduction After you have configured the Connect:Direct Gateway, you must create Connect:Direct Gateway Mailboxes.

Procedure Use this procedure to create Connect:Direct Gateway Mailboxes.

Step	Action
1	Start the Mailbox Server Manager .
2	Select the Mailboxes folder icon.
3	Right-click, and select Create from the short-cut menu. System Response The system displays the Create Mailbox Wizard dialog box.
4	Type the name and description of the mailbox you are creating and click Next twice. System Response The system displays a dialog asking whether you want to use the mailbox as a gateway to another messaging system.
5	Select Yes, use this mailbox as a gateway .
6	Select Connect:Direct from the list. Click Next to advance the wizard. System Response The system displays the Create Mailbox Wizard - Summary dialog box.
7	Is the information that you entered correct? <ul style="list-style-type: none"> ▶ If yes, click Finish. Continue with the next step. ▶ If no, click Back to correct the information. Continue with the next step. System Response The system displays the Gentran Mailbox Properties dialog box. Note If you attempt to create a mailbox and the data store is missing, the system generates an error message box informing you that the mailbox cannot be created. Click OK to exit the message box and click Cancel to exit the Create Mailbox Wizard.
8	Do you want to configure Send properties? <ul style="list-style-type: none"> ▶ If yes, continue with the next step. ▶ If no, continue with Step 17. <p style="text-align: right;">(Continued on next page)</p>

(Contd) Step	Action
9	Select the Send messages from this mailbox check box.
10	Enter the Snode Name , User ID , and Password .
11	Select the desired process options.
12	Select the desired Start Date and Start Time options.
13	Select the desired Attachment options.
14	<p>Enter the Source file location information.</p> <p>Note If the Source file location is installed on an unmapped Windows network drive of a remote machine, you must use the Universal Naming Convention (UNC).</p> <p>Example \\CDirectserver\cdirect\temp\file1.txt</p>
15	<p>Enter the Destination file location information.</p> <p>Note If the Destination file location is installed on an unmapped Windows network drive of a remote machine, you must use the Universal Naming Convention (UNC).</p> <p>Note All special characters required by a remote operating system to create a valid filename must be entered.</p> <p>Example (Windows) c:\test\</p>
16	<p>Do you want to configure Receive properties?</p> <ul style="list-style-type: none"> ▶ If yes, continue with the next step. ▶ If no, click OK to save changes and to exit the Connect:Direct Mailbox Properties dialog box.
17	Select the Receive tab.
18	Select the Receive messages into this mailbox check box.
19	Enter the path and filename of the receive folder in the Receive files from this folder box.
20	<p>Enter the method by which you want to receive files.</p> <p>Note If you selected Trigger as the method, see <i>How to Use the EATTrigger Program</i> on page 2 - 29 for more information.</p> <p style="text-align: right;">(Continued on next page)</p>

(Contd) Step	Action
21	Click Edit Recipients . System Response The system displays the Edit Recipients dialog box.
22	Select a recipient from the list or enter the name in the box. Note You can also select a predefined distribution list. Reference See the <i>Communications User's Guide</i> for information on how to create a Distribution List.
23	Click the appropriate routing option. Valid options are: <ul style="list-style-type: none"> ▶ To ▶ CC ▶ BCC System Response The system displays the Email Address dialog box.
24	Do you want to specify a Email? <ul style="list-style-type: none"> ▶ If yes, enter the Email in the box. Click Add. Click OK. ▶ If no, click Cancel. System Response You return to the Edit Recipients dialog box.
25	Do you want to add more recipients? <ul style="list-style-type: none"> ▶ If yes, repeat Steps 22 to 24. ▶ If no, continue with the next step.
26	Click OK to return to the Receive tab and continue with the next step.
27	Select the desired message options.
28	Select the desired attachment Content Type.
29	Select the desired message Content Type.
30	Click OK to save changes and exit the Connect:Direct Mailbox Properties dialog box.

How to Modify Mailbox Properties

Introduction This section describes how to modify mailbox properties that were created using the Create Mailbox Wizard.

Procedure Use this procedure to modify mailbox properties.

Step	Action	
1	Start the Mailbox Server Manager .	
2	Expand the Mailboxes folder.	
3	Select the mailbox for which you want to add or modify properties.	
4	Right-click and select Properties from the shortcut menu. System Response The system displays the Mailbox Properties dialog box.	
5	Use this table to determine your next step.	
	IF you want to change the mailbox...	THEN click this tab...
	<ul style="list-style-type: none"> ▶ name ▶ Gentran E-mail address 	Addressing
	<ul style="list-style-type: none"> ▶ Gateway properties ▶ Configuration properties 	Gateway
	delivery rules	Delivery Rules
	user security permissions	Security
6	Make the appropriate modifications and then click OK to save changes and to exit the dialog box.	

How to Use the EAITrigger Program

Introduction

The EAITrigger Program is an external program that enables Connect:Direct messaging software to prompt the Connect:Direct Gateway to retrieve data from the:

- receive folder specified on the Receive tab of the Connect:Direct Mailbox Properties dialog box, or the
- folder specified in the EAITrigger parameters defined in a Connect:Direct Process as part of a Run Task statement.

To invoke the EAITrigger program, you create a Connect:Direct Process that includes a Run Task statement. The Run Task statement specifies EAITrigger Program parameters, which prompt the Connect:Direct Gateway to retrieve data from the specified receive folder.

Before you begin

Before you can use the EAITrigger program, you must create a Connect:Direct Process on the Connect:Direct server. This Process must include a Run Task statement that invokes the EAITrigger Program on the Gentran:Server system.

In the Connect:Direct Gateway, you must select Triggered as the Method option on the Receive tab of the Connect:Direct Mailbox Properties dialog box.

Valid Parameters

This table describes valid command line parameters.

To specify...	Use command line parameter....	Is this parameter required or optional?
Information Hub Server Host name or IP address	-h	Required
Source mailbox name	-c	Required
Option number	-o	Optional
Folder name	[Receive folder name]	Optional

Syntax Example

This is an EAITrigger Program syntax example.

```
SYSOPTS="PGM(x:\install folder\Bin\EAITrigger)
  ARGS(-h Hub -c Mailbox -o Option# parm)"
```

Where:

- **x** specifies the drive on which Gentran:Server is installed.
- **install folder** specifies the folder on which Gentran:Server is installed.
- **Hub** specifies the name of the Mailbox Server Manager.
- **Mailbox** specifies the name of the Connect:Direct Gateway Mailbox.
- **Option#** specifies the numeric option, where:
 - **1** specifies that files should be received from the folder defined on the Receive tab of the Connect:Direct Mailbox Properties dialog box.
 - **2** specifies that parm is the folder from which files should be received.

Note

The default is 2. It does not need to be specified if parm is specified.

- **parm** specifies the folder from which files should be received.

Example Process 1

This is an example of a Connect:Direct Process that instructs the Connect:Direct Gateway to retrieve files from the Receive folder specified on the Receive tab of the Connect:Direct Mailbox Properties dialog box.

```
/*BEGIN_REQUESTER_COMMENTS
$PNODE$="notest" $PNODE_OS$="Windows"
$SNODE$="NOTEST" $SNODE_OS$="Windows"
$OPTIONS$="WDOS"
END_REQUESTER_COMMENTS*/

EAI PROCESS SNODE=NOTEST

STEP1 RUN TASK (PGM=WindowsNT/95)
SYSOPTS="PGM(\\ntserver1\GENSRVNT\BIN\EAITRIGGER.EXE)
  ARGS(-h ntserver1 -c cd -o 1)"

PEND
```

Where:

- **ntserver1** specifies the name of the Gentran:Server server.
- **cd** specifies the name of the Connect:Direct Gateway Mailbox.
- **-o 1** instructs Gentran:Server to use the Receive folder specified on the Receive tab of the Connect:Direct Mailbox Properties dialog box.

**Example
Process 2**

This is an example of a Connect:Direct Process that instructs the Connect:Direct Gateway to retrieve files from the machine and receive folder specified in the EAITrigger Program parameters.

```
/*BEGIN_REQUESTER_COMMENTS
$PNODE$="notest" $PNODE_OS$="Windows"
$SNODE$="NOTEST" $SNODE_OS$="Windows"
$OPTIONS$="WDOS"
END_REQUESTER_COMMENTS*/

EAI PROCESS SNODE=NOTEST

STEP1 RUN TASK (PGM=WindowsNT/95)
      SYSOPTS="PGM(\\ntserver1\GENSRVNT\BIN\EAITRIGGER.EXE)
      ARGS(-hserver1 -c cd \\notest\receive)"

PEND
```

Where:

- **ntserver1** specifies the name of the Gentran:Server server.
- **cd** specifies the name of the Connect:Direct Gateway Mailbox.
- **\\notest\receive** instructs Gentran:Server to retrieve files from the Receive folder on the machine “notest.”

How to Troubleshoot Common Errors

Introduction

Connect:Direct errors that the Connect:Direct Gateway encounters as a result of process creation or submission are noted in the Event Log and in the Gentran:Server Audit Notification Server.

These messages typically include an 8-character message ID and a brief description of the error message. You can view a more detailed error message description by means of the Message Lookup facility in the Connect:Direct Requester.

Common errors include:

- ▶ **LCOA014I Client supplied bad username or password**

Reason: User ID or password is invalid.

Solution: Modify user information through the Client Connection Utility. To access the Client Connection Utility, click **Configure** on the Gateway Properties dialog box.

- ▶ **TCPIP: WSAECONNREFUSED - The connection was refused. The server may be down.**

Reason: The Connect:Direct server is down.

Solution: Notify your Connect:Direct Administrator. Verify that the Connect:Direct server is up and running.

<or>

Reason: Wrong node information configured (typically this is due to a bad IP address).

Solution: Modify node information through the Client Connection Utility. To access the Client Connection Utility, click **Configure** on the Gateway Properties dialog box.

Related topic

See “Using the Audit Notification System” in the *Administration Guide* for additional information on other Gentran:Server errors.
