

Gentran:Server[®] for Windows[®]

**MQ Series Gateway
Configuration Guide**

Version 5.1

Sterling Commerce
An IBM Company

Copyright Notice

Gentran:Server for Windows

© Copyright 1995–2005
Sterling Commerce, Inc.
ALL RIGHTS RESERVED

Sterling Commerce Software Trade Secret Notice

THE GENTRAN:SERVER FOR WINDOWS SOFTWARE ("STERLING COMMERCE SOFTWARE") IS THE CONFIDENTIAL AND TRADE SECRET PROPERTY OF STERLING COMMERCE, INC., ITS AFFILIATED COMPANIES OR ITS OR THEIR LICENSORS, AND IS PROVIDED UNDER THE TERMS OF A LICENSE AGREEMENT. NO DUPLICATION OR DISCLOSURE WITHOUT PRIOR WRITTEN PERMISSION. RESTRICTED RIGHTS.

This documentation, the Sterling Commerce Software it describes, and the information and know-how they contain constitute the proprietary, confidential and valuable trade secret information of Sterling Commerce, Inc., its affiliated companies or its or their licensors, and may not be used for any unauthorized purpose, or disclosed to others without the prior written permission of the applicable Sterling Commerce entity. This documentation and the Sterling Commerce Software that it describes have been provided pursuant to a license agreement that contains prohibitions against and/or restrictions on their copying, modification and use. Duplication, in whole or in part, if and when permitted, shall bear this notice and the Sterling Commerce, Inc. copyright notice.

As and when provided to any governmental entity, government contractor or subcontractor subject to the FARs, this documentation is provided with RESTRICTED RIGHTS under Title 48 CFR 52.227-19. Further, as and when provided to any governmental entity, government contractor or subcontractor subject to DFARs, this documentation and the Sterling Commerce Software it describes are provided pursuant to the customary Sterling Commerce license, as described in Title 48 CFR 227-7202 with respect to commercial software and commercial software documentation.

These terms of use shall be governed by the laws of the State of Ohio, USA, without regard to its conflict of laws provisions. If you are accessing the Sterling Commerce Software under an executed agreement, then nothing in these terms and conditions supersedes or modifies the executed agreement.

Product names mentioned herein may be trademarks and/or registered trademarks of their respective companies. Gentran and Gentran:Server are registered trademarks of Sterling Commerce, Inc.

Third Party Software:

Portions of the Sterling Commerce Software may include products, or may be distributed on the same storage media with products, ("Third Party Software") offered by third parties ("Third Party Licensors").

Warranty Disclaimer

This documentation and the Sterling Commerce Software which it describes are licensed either "AS IS" or with a limited warranty, as set forth in the Sterling Commerce license agreement. Other than any limited warranties provided, NO OTHER WARRANTY IS EXPRESSED AND NONE SHALL BE IMPLIED, INCLUDING THE WARRANTIES OF MERCHANTABILITY AND FITNESS FOR USE OR FOR A PARTICULAR PURPOSE. The applicable Sterling Commerce entity reserves the right to revise this publication from time to time and to make changes in the content hereof without the obligation to notify any person or entity of such revisions or changes.

The Third Party Software is provided 'AS IS' WITHOUT ANY WARRANTY AND ANY EXPRESSED OR IMPLIED WARRANTIES, INCLUDING BUT NOT LIMITED TO, THE IMPLIED WARRANTIES OF MERCHANTABILITY, AND FITNESS FOR A PARTICULAR PURPOSE ARE DISCLAIMED. FURTHER, IF YOU ARE LOCATED OR ACCESSING THIS SOFTWARE IN THE UNITED STATES, ANY EXPRESS OR IMPLIED WARRANTY REGARDING TITLE OR NON-INFRINGEMENT ARE DISCLAIMED.

Table of Contents

Preface	About This Guide	
	▶ Introduction	iv
	▶ Description of Contents	v
	▶ Getting Support	vi
Chapter 1	MQ Series Gateway Overview	
	▶ Overview	1-2
	▶ MQ Series Gateway	1-3
	▶ MQ Series Gateway Mailboxes	1-4
Chapter 2	Configuring Communications	
	▶ Introduction	2-1
	Mailbox Properties	2-3
	▶ MQ Series Mailbox Properties	2-3
	▶ Mailbox Properties	2-10
	Procedures	2-14
	▶ Configuration process	2-14
	▶ Configuring Security for the MQ Series Gateway	2-15
	▶ Configuring MQ Series Client Mailbox Definitions	2-16
	▶ How to Create MQ Series Gateway Mailboxes	2-18
	▶ How to Modify Mailbox Properties	2-22
	▶ Using the EAITrigger Program	2-23

About This Guide

Contents

- ▶ Introductioniv
 - ▶ Description of Contentsv
 - ▶ Getting Supportvi
-



Introduction

Overview This manual contains the tasks you must follow to:

- configure the Gentran:Server MQ Series Gateway
- create MQ Series Gateway Mailboxes

Intended audience The intended audience for this manual is:

- Gentran:Server system administrators
- advanced MQ Series users

Prerequisite knowledge The audience using this software should be familiar with:

- Your operating system
 - Communications protocols
 - MQ Series messaging software
-

Description of Contents

Introduction

This guide is organized into the tasks that you complete when configuring communications for the MQ Series Gateway.

Organization of chapters

The guide is organized into chapters. A brief description of each chapter's contents follows.

- About This Guide explains the content and organization of this guide.
 - MQ Series Gateway Overview provides a high-level overview of the MQ Series Gateway.
 - Configuring Communications explains the process for configuring MQ Series Gateway communications. This chapter also provides the procedures you must follow to configure your MQ Series Gateway Mailboxes.
-

Getting Support

Introduction The Sterling Commerce Gentran:Server software is supported by trained product support personnel who are available to help you with product questions or concerns.

Note

Gentran:Server Customer Support does not support non-Sterling Commerce products (e.g., SQL Server, Oracle, etc.), but can assist you in configuring non-Sterling Commerce products to work with Gentran:Server.

Phone number For assistance, please refer to your *Getting Started Guide* to determine which support phone number you should use.

Before calling support

To help us provide prompt service, we ask that you do the following:

- Attempt to recreate any problem that you encounter and record the exact sequence of events.
- When you call product support, you should be prepared to provide us with the information below.

Information	Description
Identification	Your company name, your name, telephone number and extension, and the case number (if the question refers to a previously reported issue).
System Configuration	The Gentran:Server version (and any service packs installed) and information about the primary Gentran system controller and all machines experiencing problems, including: the Windows operating system version, amount of memory, available disk space, database version, Microsoft Data Access (MDAC) version, and Internet Explorer version. Also, please describe any recent changes in your hardware, software, or the configuration of your system.
System Data Store	Which machines contain folders in the system data store?
Error Messages	Record the exact wording of any error messages you receive and the point in the software where the error occurred, as well as any log files.
Attempted Solutions	Record any steps that you took attempting to resolve the problem and note all the outcomes, and provide an estimate on how many times the problem occurred and whether it can be reproduced.

Accessing the Sterling Commerce Support Web Site

The Sterling Commerce Customer Support Web Site contains valuable information about getting support for Gentran:Server for Windows, including the:

- scope of support services
- customer support policies
- call prioritizing
- customer support phone directory
- how to create new Support on Demand cases
- how to check the status of Support on Demand cases
- how to add information to Support on Demand cases

The Customer Support Web Site is constantly updated and all Sterling Commerce customers have access to it. This web site also contains the most recent product updates and is a valuable source of product information.

Reference

Refer to the *Getting Started Guide* for information on how to access the Customer Support Web Site.

Documentation

The Customer Support Web Site contains a documentation library, which has the entire Gentran:Server for Windows documentation set. You can download the product manuals in PDF format from this library at any time.

MQ Series Gateway Overview

Contents

- ▶ Overview 1 - 2
 - ▶ MQ Series Gateway 1 - 3
 - ▶ MQ Series Gateway Mailboxes. 1 - 4
-

Overview

In this chapter

This chapter provides you with a high-level overview of the Gentran:Server MQ Series Gateway communications.

What is MQ Series?

IBM MQ Series is messaging software that acts as a transport between applications. MQ Series uses message queues to store messages from unlike applications. The Queue Manager serves as the interface between the message queue and the application.

What is a Gateway?

A Gateway is a software component that controls the transmission of messages between two parties. The gateway is responsible for using the correct protocols to transfer messages between the sender and receiver.

You are responsible for defining the properties of the gateways that you use for transferring messages.

What is a Mailbox?

A mailbox stores messages until those messages are transferred to a recipient application. You are responsible for creating mailboxes. When you create mailboxes, you associate the mailbox with an gateway. The properties that you define for each mailbox determine how messages are transferred from or to your application via the gateway.

MQ Series message types

MQ Series supports four message types. Those types are:

- Datagram - used when no feedback is required
 - Request - used when a reply is requested from the application that receives the message
 - Reply - used in conjunction with a request to return the reply message to the application
 - Report - used when notification of an error is required when processing a message generated either from the Queue Manager or the application
-

MQ Series Gateway

Introduction

This section provides a high-level overview of the MQ Series Gateway.

What is the MQ Series Gateway?

The MQ Series Gateway is the interface between the Mailbox Server and the IBM MQ Series Queue Manager.

The gateway operates as an MQ Series client, which enables it to interact with different types of MQ Series servers.

MQ Series Gateway Mailboxes

Introduction

When you configure a mailbox for use with the MQ Series Gateway, you define:

- General properties that include:
 - Queue Manager name
 - Connection mode
 - Receive properties that include:
 - Receive/Report Queue name
 - Preferred receipt method
 - Recipient definition
 - Message grouping information
 - Gentran:Server Subject mapping information
 - Send properties that include:
 - Send Queue name
 - Message life span information
 - Message grouping information
 - Reports request information
 - MQ Series Message Descriptor Mapping information
-

Configuring Communications

Contents	<ul style="list-style-type: none"> ▶ Introduction 2 - 1 Mailbox Properties 4 <ul style="list-style-type: none"> ▶ MQ Series Mailbox Properties 2 - 3 ▶ Mailbox Properties 2 - 10 Procedures 19 <ul style="list-style-type: none"> ▶ Configuration process 2 - 14 ▶ Configuring Security for the MQ Series Gateway 2 - 15 ▶ Configuring MQ Series Client Mailbox Definitions 2 - 16 ▶ How to Create MQ Series Gateway Mailboxes 2 - 18 ▶ How to Modify Mailbox Properties 2 - 22 ▶ Using the EAITrigger Program 2 - 23
-----------------	--

Introduction

In this chapter This chapter describes the tasks that you must complete to configure your MQ Series Gateway and MQ Series Gateway Mailbox.

Key Terms This table describes key terms used in this chapter.

Term	Description
Gateway	Software components that control the transmission of messages between two parties. The gateway is responsible for using the correct protocols to transfer messages between the sender and receiver.

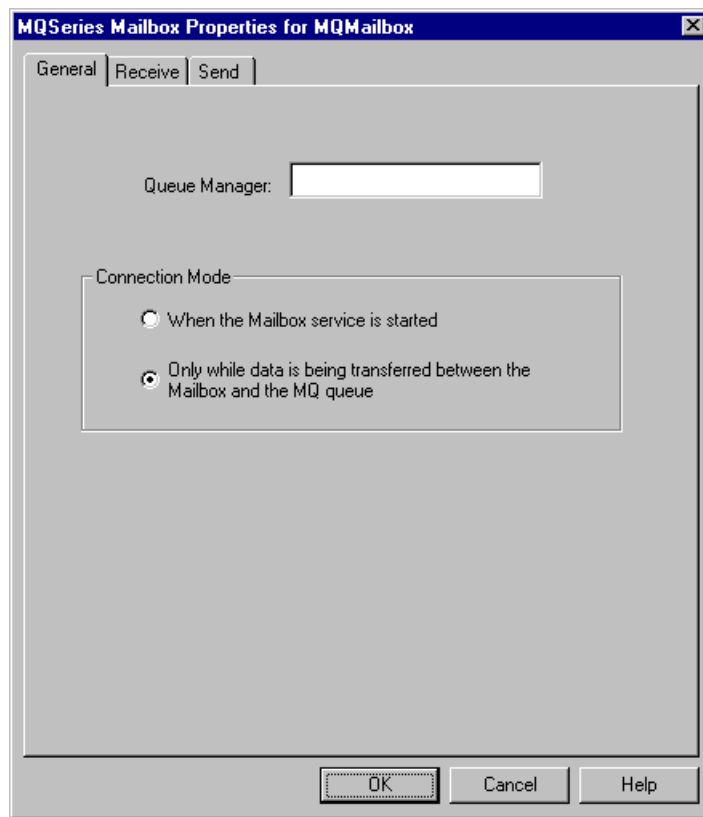
Term	Description
Application Data	Any user defined data which cannot exceed the maximum message length set for a Message Queue, unless segmentation is used.
Mailbox	A folder or set of folders used to store messages.
COA	Confirm on Arrival report that is produced by the Queue Manager and indicates that the message has reached its target destination queue.
COD	Confirm on Delivery report that is produced by the Queue Manager and indicates that the message has been retrieved by a receiving application.
Message Descriptor	An MQ Series message component that contains pertinent message information, including structure ID, version, message type, and priority.
MQ Series	IBM MQ Series is messaging software that acts as a transport between applications.
Persistent Messages	Message copy created and logged for recovery purposes by MQ Series in the event of system failure.
Queue Manager	Serves as the interface between one or more MQ Series Message Queues and an application.
Send Queue	A predefined MQ Series Message Queue that stores data to be sent to an application.
Receive Queue	A predefined MQ Series Message Queue that receives replies, reports, and MQ Series messages.

Mailbox Properties

MQ Series Mailbox Properties

Introduction The MQ Series Mailbox Properties dialog box defines the properties of the MQ Series Mailbox.

General tab This diagram illustrates the General tab of the MQ Series Mailbox Properties dialog box



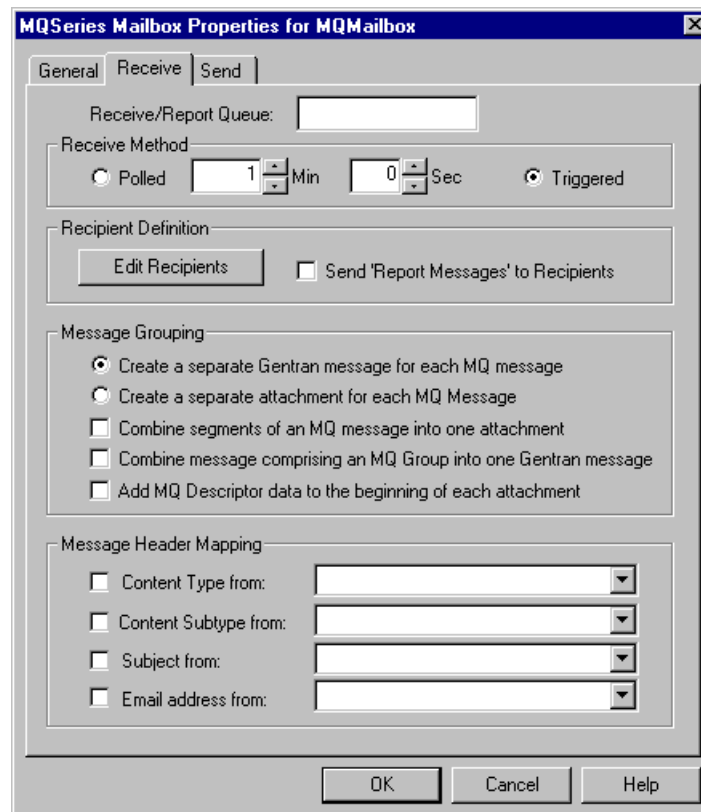
Parts and functions This table describes the parts of the General tab of the MQ Series Mailbox Properties dialog box and their functions.

Part	Function
Queue Manager	Specifies the name of the Queue Manager associated with the MQ Series server to which you want to connect. (Continued on next page)



(Contd) Part	Function
Connection Mode	Specifies how you want to connect to the MQ Series server. Valid values are: <ul style="list-style-type: none"> When the Mailbox Service is started - automatically connect, and then remain connected, for the duration of time that the Mailbox Service is started. Only while data is being transferred between the Mailbox and the MQ Series Queue - connect and then disconnect each time data is transferred.
OK	Saves changes; exits dialog box.
Cancel	Cancels unsaved changes; exits dialog box.
Help	Launches online Help system.

Receive tab This diagram illustrates the Receive tab of the MQ Series Mailbox Properties dialog box



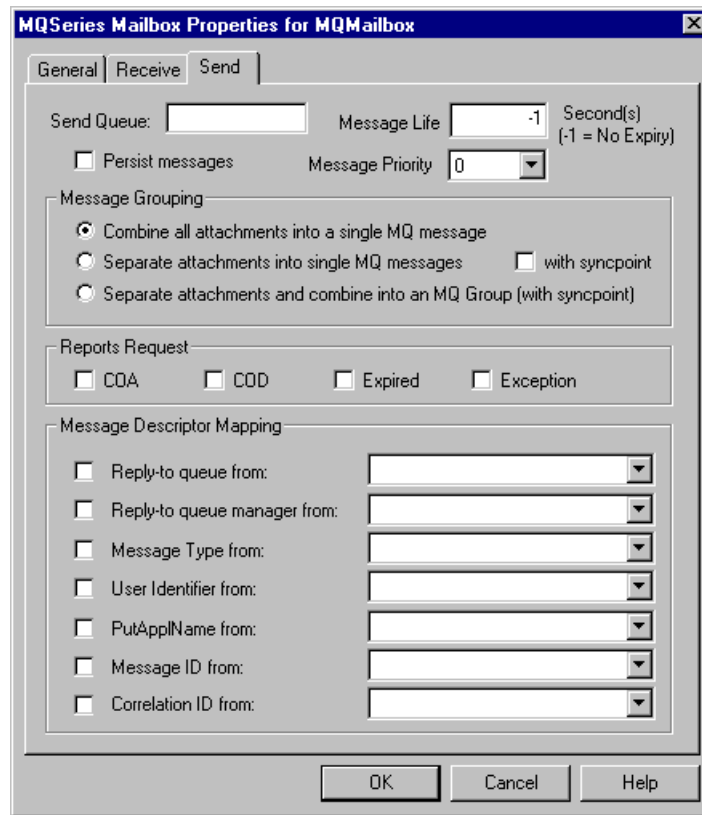
Parts and functions

This table describes the parts of the Receive tab of the MQ Series Mailbox Properties dialog box and their functions.

Part	Function
Receive/Report Queue	Specifies the name of the MQ Series queue from which Gentran:Server will receive MQ Series messages.
Receive Method	<ul style="list-style-type: none"> ▶ Polled - Specifies that you want the mailbox to query the Receive/Report Queue at the specified interval, defined in minutes (min) and seconds (sec). <p>Note If you plan to select the Polled method, you must verify that the following are installed, configured, and running: MQ Series software, MQ Series Listener command (must be running), and mailbox-level properties.</p> <ul style="list-style-type: none"> ▶ Triggered - Specifies that you want the EAITrigger program to determine when the mailbox queries the Receive/Report Queue. <p>Reference See <i>Using the EAITrigger Program</i> on page 2 - 23 for more information.</p>
Recipient Definition	<p>Enables you to specify message recipient information.</p> <ul style="list-style-type: none"> ▶ Edit Recipients - accesses the Edit Recipients dialog box, which enables you to select or edit recipient properties. ▶ Send 'Report Messages' to Recipients - specifies whether you want reports specified on the Send Properties dialog to be routed to recipients.
Message Grouping	<p>Specifies how you want to group messages received from MQ Series Queue Manager. You must select either:</p> <ul style="list-style-type: none"> ▶ Create a separate message for each MQ Series message (default) - specifies that you want to receive a separate Gentran:Server message for each MQ Series message. ▶ Create a separate attachment for each MQ message - specifies that you want to receive a single Gentran:Server message with a separate Gentran:Server attachment for each logical message in a single MQ Series group. <p style="text-align: right; color: green;">(Continued on next page)</p>

(Contd) Part	Function
Message Grouping (contd)	<p>Additional options include:</p> <ul style="list-style-type: none"> ▶ Combine segments of an MQ Message into one attachment - combines MQ Series message segments into one Gentran:Server message. ▶ Combine message comprising an MQ Group into one message - combines MQ Series message groups so that they are created as separate attachments for the same Gentran:Server message. ▶ Add MQ Descriptor data to the beginning of each attachment - specifies that you want each attachment you receive to begin with message descriptor information.
Subject Mapping	<p>If check box is selected, this enables you to map subject information from the MQ Series Message Descriptor into key subject fields used by the Gentran:Server Business Rules Engine. Mapping components are:</p> <ul style="list-style-type: none"> ▶ Content type from ▶ Content Subtype from ▶ Subject from ▶ Email Address from <p>Note Values enclosed in \$ (dollar symbols) indicate that you want to map specific values from the MQ Series Message Descriptor into Gentran:Server subject. A value that is entered and not enclosed in \$ (dollar symbols) is interpreted by the system as a hard-coded value.</p>
OK	Saves changes; exits dialog box.
Cancel	Cancels unsaved changes; exits dialog box.
Help	Launches online Help system.

Send tab This diagram illustrates the Send tab of the MQ Series Mailbox Properties dialog box.



Parts and functions

This table describes the parts of the Send tab of the MQ Series Mailbox Properties and their functions.

Part	Function
Send Queue	Specifies the name of the MQ Series queue to which Gentran:Server messages will be sent.
Message Life	Specifies the length of time (in seconds) in which you want a message to expire in the MQ Series system.
Persist messages	Specifies that you want MQ Series to create persistent messages in the system.
Message Priority	Specifies an MQ Series message priority level.

(Continued on next page)



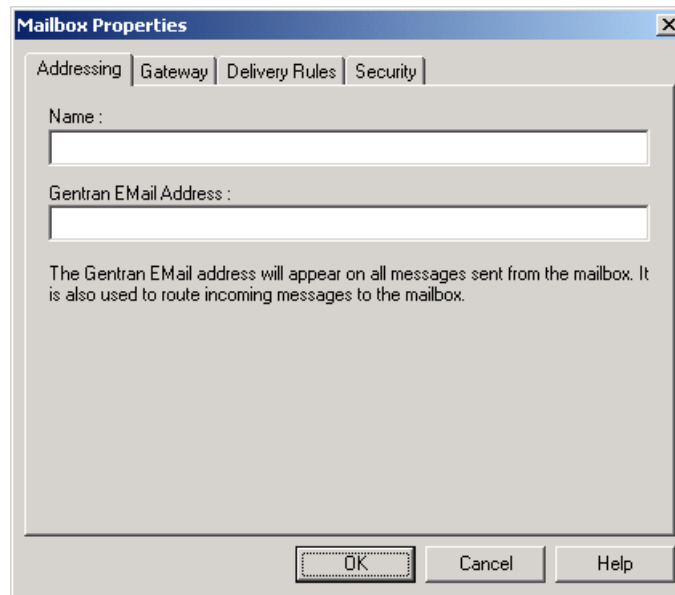
(Contd) Part	Function
Message Grouping	<p>Specifies how you want to group messages sent to MQ Series. Valid values are:</p> <ul style="list-style-type: none"> • Combine all attachments into a single MQ message - specifies that you want all attachments concatenated into a single MQ Series message. • Separate attachments into single MQ messages - specifies that you want to send each attachment as a separate MQ Series message. Selecting the With syncpoint checkbox enables the MQ Series Syncpoint option. • Separate attachments and combine into an MQ Group (with syncpoint) - specifies that you want to send each attachment as an MQ Series group of messages.
Reports Request	<p>Specifies what type of report that you want MQ Series to generate. A selected check box activates the report option on a message sent to MQ Series. Valid values are:</p> <ul style="list-style-type: none"> • COA - confirm on arrival reports • COD - confirm on delivery reports • Expired - expired reports • Exception - exception reports <p>Note If you select either Expired or Exception as the report option, the default status on the originating mailbox changes to “Delivery Failed” when the Expired or Exception report is received back from MQ Series. Please note that because of the “Delivery Failed” status, the message displays in Message Tracking as a red icon.</p> <p style="text-align: right;">(Continued on next page)</p>

(Contd) Part	Function
Message Descriptor Mapping	<p>Check box selection enables you to map subject information from the mailbox message into the MQ Series Message Descriptor. Options include:</p> <ul style="list-style-type: none"> • Reply-to queue from • Reply-to queue manager from • Message Type from • User Identifier from • PutApplName from • Message ID from • Correlation ID from <p>Message Descriptor selections can be manually entered in the box or selected from the associated list.</p> <p>Notes</p> <ul style="list-style-type: none"> • If a check box is selected, but no associated value is manually entered or selected from the list, an empty string is used. • Values enclosed in \$ (dollar symbols) indicate that you want to map specific values from Gentran:Server subject fields. • A value that is entered and not enclosed in \$ (dollar symbols) is interpreted by the system as a hard-coded value. <p>Example</p> <p>You want to map the Content field of the Gentran:Server subject into the Message Type field of the MQ Series Message Descriptor. To do this, select the Message Type from check box. From the associated list, select \$CONTENT\$.</p> <p>The function of a cleared check box depends on the type of mailbox from which the message originates. If the message originates from another MQ Series mailbox, a cleared check box indicates that you want to map MQ Series Message Descriptor data for that particular field.</p> <p>If the attachment contains no Message Descriptor data, default MQ Series data is stored in that field.</p>
OK	Saves changes; exits dialog box.
Cancel	Cancels unsaved changes; exits dialog box.
Help	Launches online Help system.

Mailbox Properties

Introduction The Mailbox Properties dialog box defines the properties of the mailbox.

Addressing Tab This diagram illustrates the Addressing tab of the Mailbox Properties dialog box

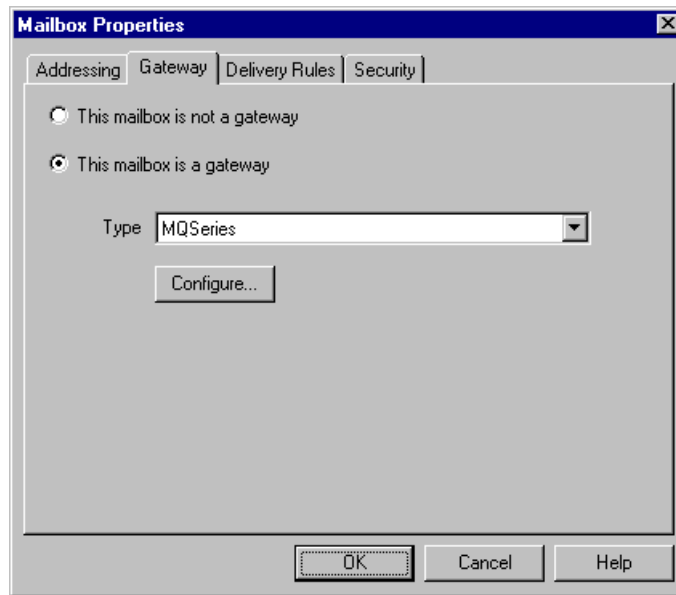


Parts and functions This table describes the parts of the Addressing tab of the Mailbox Properties dialog box and their functions.

Part	Function
Name	Defines the name of the mailbox.
Gentran Email address	Defines the Gentran e-mail address for messages sent from the mailbox.
OK	Saves changes; exits dialog.
Cancel	Closes dialog without saving changes.
Help	Accesses online help.

Gateway Tab

This diagram illustrates the Gateway tab of the Mailbox Properties dialog box.



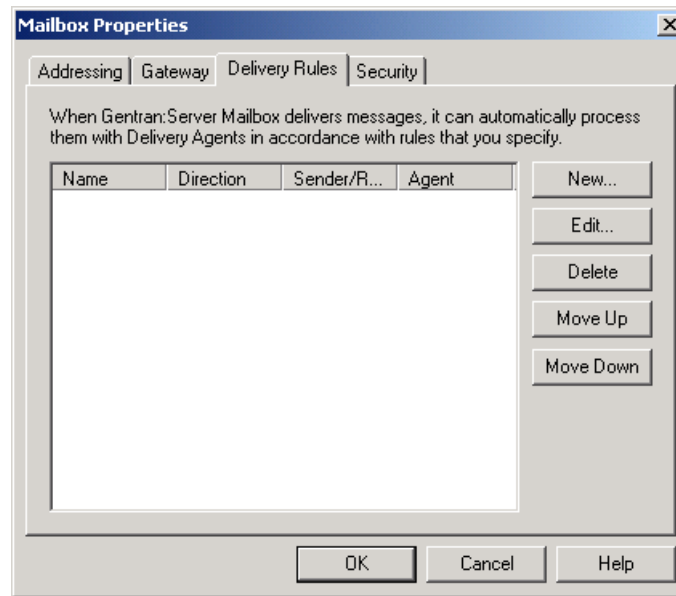
Parts and functions

This table describes the parts of the Gateway tab of the Mailbox Properties dialog box and their functions.

Part	Function
This mailbox is not a gateway This mailbox is a gateway	Specifies whether the mailbox is or is not a gateway. Options are: <ul style="list-style-type: none"> ▶ This mailbox is not a gateway. ▶ This mailbox is a gateway.
Type	Specifies type of gateway. Activated when the This mailbox is a gateway option is selected.
Configure	Enables you to configure properties for the gateway.
OK	Saves changes; exits dialog.
Cancel	Closes dialog without saving changes.
Help	Accesses online help.

Delivery Rules Tab

This diagram illustrates the Delivery Rules tab of the Mailbox Properties dialog box.

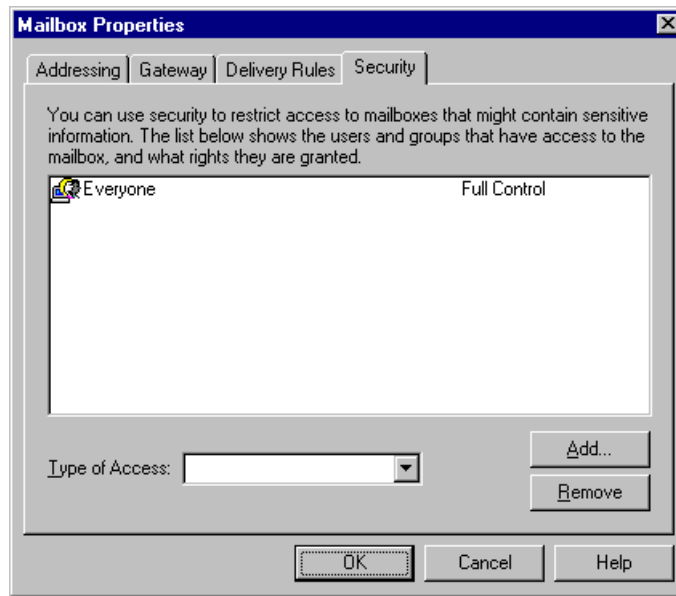
**Parts and functions**

This table describes the parts of the Delivery Rules tab of the Mailbox Properties dialog box and their functions.

Part	Function
Name	Defines the name of the Delivery Rule.
Direction	Identifies if the rule is run when sending or receiving a message.
Sender/Recipient	Identifies the mailbox of the sender or recipient. The E-mail address can be specified in addition to the mailbox name.
Agent	Identifies the name of the delivery agent to be run.
New	Enables you to create new Delivery Rules.
Edit	Enables you to edit existing Delivery Rules.
Delete	Enables you to delete Delivery Rules.
Move Up	Moves the selected Delivery Rule up in the processing order.
Move Down	Moves the selected Delivery Rule down in the processing order.
OK	Saves changes; exits dialog.
Cancel	Closes dialog without saving changes.
Help	Accesses online help.

Security Tab

This diagram illustrates the Security tab of the Mailbox Properties dialog box.



Parts and functions

This table describes the parts of the Security tab of the Mailbox Properties dialog box and their functions.

Part	Function
(User list)	Defines the users and groups that have access to mailbox.
Type of Access	Designates the level at which a user can interact with a mailbox. Values are: <ul style="list-style-type: none"> ▶ Full control ▶ Read ▶ Write
Add	Enables you to grant users or groups mailbox access.
Remove	Enables you to remove user or group mailbox access.
OK	Saves changes; exits dialog.
Cancel	Closes dialog without saving changes.
Help	Accesses online help.

Procedures

Configuration process

MQ Series Gateway process

This table lists the stages in configuring your communications for use with MQ Series messaging software.

Stage	Description
1	Install the MQ Series messaging software. Reference Refer to the documentation that came with your MQ Series messaging software for installation instructions.
2	Install the MQ Series Gateway. Reference See the <i>Options Pack Installation Card</i> for more information on installing this gateway.
3	Configure MQ Series Queue Manager and Send and Receive queue properties. Reference Refer to the documentation that came with your MQ Series messaging software for instructions.
4	Set up MQ Series Gateway security. Reference See <i>Configuring Security for the MQ Series Gateway</i> on page 2 - 15 for more information.
5	Set up the MQ Series client mailbox definitions. Reference See <i>Configuring MQ Series Client Mailbox Definitions</i> on page 2 - 16 for more information.
6	Create the Gentran:Server MQ Series gateway mailboxes that you intend to use. Reference See <i>How to Create MQ Series Gateway Mailboxes</i> on page 2 - 18 for more information.

Configuring Security for the MQ Series Gateway

Introduction

In order for Gentran:Server to access MQ Series queues, the Windows User ID under which Gentran:Server runs (or a Windows group of which the Gentran:Server ID is a member) must be specified in MQ Series.

To accomplish this, use one of these two methods:

Method 1

Make the Gentran:Server user ID a member of the mqm group (this group is created for MQ Series administration when MQ Series is installed). Using this method enables Gentran:Server to access any MQ Series queue. This method also enables programs running under the Gentran:Server ID to perform MQ Series administration tasks.

Method 2

Explicitly grants Gentran:Server access to specific MQ Series queues using the SETMQAUT MQ Series command.

Note

MQ Series commands are case-sensitive.

Example

The following command grants authority to any program running under the Windows userID, ServerID access to the MQ Series queue (Server.INPUT.QUEUE) on Queue Manager QMGRNAME.

```
SETMQAUT -m QMGRNAME -n Server.INPUT.QUEUE -t queue -p ServerID +all
```

Note

You must stop and then restart the MQ Series Queue Manager before this command takes effect.

Reference

See the *MQ Series System Administration Manual* (IBM publication SC33-1873-00) for more information on the SETMQAUT command.

Configuring MQ Series Client Mailbox Definitions

Introduction

Gentran:Server runs as an MQ Series client application, which means that the Gentran:Server API to MQ Series operates over a network connection.

This allows Gentran:Server to function on:

- the same computer as the one on which MQ Series is installed
 - a different, network-accessible computer
-

Connection set-up requirements

Setting up the network connection requires the following:

1. MQ Series Client software is installed on the computer where Gentran:Server server is installed.
 2. MQ Series Client mailbox definitions are configured on the computer running the MQ Series Queue Manager. You must create these definitions using "Method 2," defined in the *MQ Series Clients Manual* (IBM Publication GC33-1632-04).
 3. The client mailbox definition table (produced in Step 2 above) is moved to the computer on which Gentran:Server is installed.
 4. An MQ Series mailbox listener program is running on the MQ Series computer.
-

Example This example assumes that the MQ Series Queue Manager and MQ Series clients are installed in the default locations (c:\mqm) on both the MQ Series computer and the Gentran:Server computer.

Step	Action
1	<p>Process the following RUNMQSC commands on the MQ Series computer:</p> <pre>DEFINE CHANNEL(Server.CLIENT) CHLTYPE(SVRCONN) TRPTYPE(TCP) MCAUSER(' ') REPLACE DEFINE CHANNEL(Server.CLIENT) CHLTYPE(CLNTCONN) TRPTYPE(TCP) CONNAME(mq_ip_address) QMNAME(QMGRNAME) REPLACE</pre> <p>where:</p> <ul style="list-style-type: none"> ▶ mq_ip_address specifies the IP address or machine name of the MQ Series computer. ▶ QMGRNAME specifies the Queue Manager name. <p>Reference See the <i>MQ Series Command Reference Manual</i> (IBM Publication SC33-1369-08) for more information on using RUNMQSC.</p> <p>System Response The system creates a mailbox table on the MQ Series computer in the following location:</p> <pre>c:\mqm\qmgrs\QMGRNAME\@ipcc\amqclchl.tab (QMGRNAME = queue manager name).</pre>
2	<p>Copy the mailbox table file from c:\mqm\qmgrs\QMGRNAME\@ipcc\amqclchl.tab (QMGRNAME= queue manager name) on the MQ Series computer to c:\mqm\amqclchl.tab on the Gentran:Server computer.</p>
3	<p>Run a mailbox listener program on the MQ Series computer with the command line: RUNMQLSR -t tcp -p 1414 -m QMGRNAME</p>

How to Create MQ Series Gateway Mailboxes

Introduction After you have configured the MQ Series Gateway, you must create MQ Series Gateway mailboxes.

Procedure Use this procedure to create MQ Series Gateway mailboxes.

Step	Action
1	Start the Mailbox Server Manager .
2	Select the Mailboxes folder icon.
3	Right-click and select Create from the shortcut menu. System Response The system displays the Create Mailbox Wizard dialog box.
4	Type the name and description of the mailbox you are creating and click Next twice. System Response The system displays a dialog asking whether you want to use the mailbox as a gateway to another messaging system.
5	Select Yes, use this mailbox as a gateway .
6	Select MQ Series from the list. Click Next to advance the wizard. System Response The system displays the Create Mailbox Wizard - Summary dialog box.
7	Is the information that you entered correct? <ul style="list-style-type: none"> ▶ If yes, click Finish. Continue with the next step. ▶ If no, click the Back button to correct the information. Continue with the next step. System Response The system displays the General tab of the MQ Series Mailbox Properties dialog box. Note If you attempt to create a mailbox and the data store is missing, the system generates an error message box informing you that the mailbox cannot be created. Click OK to exit the message box and click Cancel to exit the Create Mailbox Wizard.
8	Enter the name of the MQ Series Server Queue Manager.
9	Select your connection mode. (Continued on next page)

(Contd) Step	Action
10	Do you want to configure Receive properties? <ul style="list-style-type: none"> ▶ If yes, continue with the next step. ▶ If no, continue with Step 24.
11	Select the Receive tab.
12	Enter the appropriate Receive/Report Queue information.
13	Select the method by which you want to receive MQ Series information.
14	Click Edit Recipients . System Response The system displays the Edit Recipients dialog box.
15	Select a recipient from the list or enter the name in the box. Note You can also select a predefined distribution list. Reference See the <i>Communications User's Guide</i> for information on how to create a Distribution List.
16	Click the appropriate routing option. Valid options are: <ul style="list-style-type: none"> ▶ To ▶ CC ▶ BCC System Response The system moves the distribution list to the other side of the dialog box.
17	Do you want to specify an Email Address? <ul style="list-style-type: none"> ▶ If yes, enter the Email Address in the box. Click Add and then click OK, and continue with the next step. ▶ If no, click Cancel. Continue with the next step. System Response You return to the Edit Recipients dialog box.
18	Do you want to add more recipients? <ul style="list-style-type: none"> ▶ If yes, repeat Steps 15 through 17. Continue with the next step. ▶ If no, continue with the next step.
19	Click OK to return to the Receive tab.
20	Do you want to send report information to recipients? <ul style="list-style-type: none"> ▶ If yes, select the Send 'Report Messages' to Recipients check box. ▶ If no, continue with the next step. <p style="text-align: right; color: green;">(Continued on next page)</p>

(Contd) Step	Action
21	<p>Select the appropriate message grouping options.</p> <p>Note You must select either Create a separate Server message for each MQ message or Create a separate attachment for each MQ message option. The “Combine” and “Add” selections are optional.</p>
22	<p>Do you want to map subject information from the MQ Series Message Descriptor to the key subject fields used by the Gentran:Server Business Rules Engine?</p> <ul style="list-style-type: none"> ▶ If yes, select the check box beside the subject field to which you want to map MQ Series Message Descriptor information. Then, select the appropriate MQ Series Message Descriptor option from the list or manually enter a value. Continue with the next step. <p>Note Values enclosed in \$ (dollar symbols) indicate that you want to map specific values from the MQ Series Message Descriptor into Gentran:Server subject.</p> <p>A value that is entered and not enclosed in \$ (dollar symbols) is interpreted by the system as a hard-coded value.</p> <ul style="list-style-type: none"> ▶ If no, continue with the next step.
23	<p>Do you want to configure Send properties?</p> <ul style="list-style-type: none"> ▶ If yes, continue with the next step. ▶ If no, click OK to save your configuration options and exit the dialog box.
24	Select the Send tab.
25	Enter the name of the Send Queue .
26	Verify that the number of Message Life seconds is accurate.
27	<p>Do you want MQ Series software to view messages that you send as persistent messages?</p> <ul style="list-style-type: none"> ▶ If yes, select the Persist messages check box. Continue with the next step. ▶ If no, continue with the next step.
28	<p>Do you want to specify a priority for messages sent?</p> <ul style="list-style-type: none"> ▶ If yes, select an option from the Message Priority list. Continue with the next step. ▶ If no, continue with the next step. <p style="text-align: right; color: green;">(Continued on next page)</p>

(Contd) Step	Action
29	Select Message Grouping options. Note Consult your MQ Series software documentation for information on which MQ Series software versions support message grouping.
30	Select the appropriate report request options.
31	Do you want to map Gentran:Server subject information from the Gentran:Server mailbox message into the MQ Series Message Descriptor? <ul style="list-style-type: none"> ▶ If yes, select the check box in front of the appropriate Message Descriptor option. Select the appropriate subject option from the Message Descriptor Mapping list or manually type a value. Continue with the next step. Notes <ul style="list-style-type: none"> ▶ Values enclosed in \$ (dollar symbols) indicate that you want to map specific values from Gentran:Server subject fields. ▶ A value that is entered and not enclosed in \$ (dollar symbols) is interpreted by the system as a hard-coded value. ▶ If a check box is selected, but no associated value is manually entered or selected from the list, an empty string is used. ▶ The function of a cleared check box depends on the type of mailbox from which the message originates. If the message originates from another MQ Series mailbox, a cleared check box indicates that you want to map MQ Series Message Descriptor data for that particular field. ▶ If the attachment contains no Message Descriptor data, default MQ Series data is stored in that field. ▶ If no, continue with the next step.
32	Click OK to save all changes and exit the MQ Series Mailbox Properties dialog box.

How to Modify Mailbox Properties

Introduction This section describes how to modify mailbox properties that were created using the Create Mailbox Wizard.

Procedure Use this procedure to modify mailbox properties.

Step	Action	
1	Start the Mailbox Server Manager .	
2	Expand the Mailboxes folder.	
3	Select the mailbox for which you want to add or modify properties.	
4	Right-click and select Properties from the shortcut menu. System Response The system displays the Mailbox Properties dialog box.	
5	Use this table to determine your next step.	
	IF you want to change the mailbox...	THEN click this tab...
	<ul style="list-style-type: none"> ▶ name ▶ Gentrans E-mail address 	Addressing
	<ul style="list-style-type: none"> ▶ Gateway properties ▶ Configuration properties 	Gateway
	delivery rules	Delivery Rules
	user security permissions	Security
6	Make the appropriate modifications and click OK to save changes and exit the dialog box.	

Using the EAITrigger Program

Introduction The EAITrigger Program is invoked using command-line parameters. The parameters that you enter enable the MQ Series messaging software to prompt the MQ Series Gateway to retrieve data from the Receive/Report Queue specified on the MQ Series Gateway Mailbox Properties dialog box (Receive tab).

Configuration stages This table describes the stages in which you must configure your MQ Series software and your MQ Series Gateway for use with the EAITrigger Program.

Stage	Description
1	Set up MQ Series triggering for the EAITrigger Program. Reference See <i>Setting up MQ Series triggering for the EAITrigger Program</i> on page 2 - 24 for more information.
2	Select Triggered as the Receipt Method on the Receive tab of the MQ Series Mailbox Properties dialog box. Reference See Step 15 in <i>How to Create MQ Series Gateway Mailboxes</i> on page 2 - 18 for more information.

Valid parameters This table describes valid, required parameters.

To specify...	Use command Line parameter...
Mailbox Server Host name or IP address	-h
Source mailbox name	-c
MQ Series specifier that indicates to ignore trailing data from EAITrigger message.	-q

Syntax Format This is the syntax format used with the EAITrigger Program:

```
EAItrigger -h Server -c Mailbox -q;
```

Where:

- -h is the server host name or IP address (required)
- -c is the source mailbox name (required)
- -q is an MQ Series specifier (required)

Setting up MQ Series triggering for the EAITrigger Program

To enable the EAITrigger Program, you must complete the following MQ Series tasks:

- Set up attributes on the MQ Series queue defined as the Gentran:Server mailbox input queue.
- Create an associated MQ Series PROCESS definition to hold the EAITrigger command line image.
- Ensure that the MQ Series trigger monitor program, RUNMQTMC, is running.

Reference

See *MQ Series trigger monitor* on page 2 - 25 for RUNMQTMC command line specifications.

MQ Series commands

The following MQ Series RUNMQTMC commands set up a triggered Gentran:Server input queue with the required PROCESS definition.

```
DEFINE QLOCAL(Server.INPUT.QUEUE) TRIGGER
PROCESS(Server.INPUT.PROCESS)
INITQ(SYSTEM.DEFAULT.INITIATION.QUEUE) REPLACE
```

```
DEFINE PROCESS(Server.INPUT.PROCESS)
APPLICID('c:\Gentranpath\EAITrigger -h Server -c Mailbox' -q) REPLACE
```

Where:

- c:\Gentranpath specifies the path to the EAITrigger Program on the computer where Gentran:Server is installed.

Note

This value can also be a Universal Naming Convention (UNC) path name.

- Server specifies the Gentran:Server host IP address.
- Mailbox specifies the Source mailbox name.
- -q is an MQ Series specifier.

Reference

See *MQ Series trigger monitor* on page 2 - 25 for RUNMQTMC command line specifications.

MQ Series trigger monitor

The MQ Series trigger monitor must also be running on the same computer with Gentran:Server. It can run in the foreground in a Windows command window or in the background, started automatically by the MQ Series service (if Gentran:Server is running on the same computer as MQ Series). You must configure the MQ Series server and client environments to enable the MQ Series Trigger Monitor.

Reference

See the *MQ Series Application Programming Guide* (IBM Publication SC33-0807-07) and the *MQ Series Clients Manual* (IBM Publication GC33-1632-05) for additional MQ Series software configuration information.

Configuring the MQ Series Client

This table describes the stages in which you must configure your MQ Series client.

Stage	Description
1	Install MQ Series client software and service pack.
2	Copy the AMQCLCHL.TAB file from the MQ Series server machine to the MQM directory on the MQ Series client.
3	Set the environment variables MQCHLLIB and MQCHLTAB.
4	Verify that you have specified a Receive/Report Queue on the Receive tab of the MQ Series Mailbox Properties dialog box.
5	At the command prompt, enter: <pre>RUNMQTMC -m QMGRNAME -q SYSTEM.DEFAULT.INITIATION.QUEUE</pre> If Gentran:Server and MQ Series are running on the same machine, the trigger monitor command line could also be: <pre>RUNMQTRM -m QMGRNAME -q SYSTEM.DEFAULT.INITIATION.QUEUE</pre>
6	Put a message in the input queue and then type text for a message. Example This is an example of an input queue: <pre>AMQSPUTC KSI.INPUT.QUEUE QM</pre> System Response The trigger kicks off the EAITrigger Program on the MQ Series client machine; the MQ Series Gateway Mailbox's Outbox receives the message.

Configuring the MQ Series Server

This table describes the stages in which you must configure your MQ Series server.

Stage	Description
1	Set up trigger and process on the MQ Series server.
2	Create client mailbox that includes the client machine name.
3	Copy the AMQCLCHL.TAB file from the MQ Series server machine to the MQM directory on the MQ Series client.
4	Verify that you have specified a Receive/Report Queue on the Receive tab of the MQ Series Mailbox Properties dialog box.
5	<p>Put a message in the input queue, and then type text for a message.</p> <p>Example This is an example of an input queue:</p> <pre>AMQSPUT KSI.INPUT.QUEUE QM</pre> <p>System Response The trigger invokes the EAITrigger Program on the MQ Series client machine; the MQ Series Gateway Mailbox's Outbox receives the message.</p>
