

Gentran:Server[®] for Windows[®]

**Communications Gateway
Configuration Guide**

Version 5.2

Sterling Commerce
An IBM Company

Copyright Notice

Gentran:Server for Windows

© Copyright 1995–2008
Sterling Commerce, Inc.
ALL RIGHTS RESERVED

Sterling Commerce Software Trade Secret Notice

THE GENTRAN:SERVER FOR WINDOWS SOFTWARE ("STERLING COMMERCE SOFTWARE") IS THE CONFIDENTIAL AND TRADE SECRET PROPERTY OF STERLING COMMERCE, INC., ITS AFFILIATED COMPANIES OR ITS OR THEIR LICENSORS, AND IS PROVIDED UNDER THE TERMS OF A LICENSE AGREEMENT. NO DUPLICATION OR DISCLOSURE WITHOUT PRIOR WRITTEN PERMISSION. RESTRICTED RIGHTS.

This documentation, the Sterling Commerce Software it describes, and the information and know-how they contain constitute the proprietary, confidential and valuable trade secret information of Sterling Commerce, Inc., its affiliated companies or its or their licensors, and may not be used for any unauthorized purpose, or disclosed to others without the prior written permission of the applicable Sterling Commerce entity. This documentation and the Sterling Commerce Software that it describes have been provided pursuant to a license agreement that contains prohibitions against and/or restrictions on their copying, modification and use. Duplication, in whole or in part, if and when permitted, shall bear this notice and the Sterling Commerce, Inc. copyright notice.

As and when provided to any governmental entity, government contractor or subcontractor subject to the FARs, this documentation is provided with RESTRICTED RIGHTS under Title 48 CFR 52.227-19. Further, as and when provided to any governmental entity, government contractor or subcontractor subject to DFARs, this documentation and the Sterling Commerce Software it describes are provided pursuant to the customary Sterling Commerce license, as described in Title 48 CFR 227-7202 with respect to commercial software and commercial software documentation.

These terms of use shall be governed by the laws of the State of Ohio, USA, without regard to its conflict of laws provisions. If you are accessing the Sterling Commerce Software under an executed agreement, then nothing in these terms and conditions supersedes or modifies the executed agreement.

Product names mentioned herein may be trademarks and/or registered trademarks of their respective companies. Gentran and Gentran:Server are registered trademarks of Sterling Commerce, Inc.

Third Party Software:

Portions of the Sterling Commerce Software may include products, or may be distributed on the same storage media with products, ("Third Party Software") offered by third parties ("Third Party Licensors").

Warranty Disclaimer

This documentation and the Sterling Commerce Software which it describes are licensed either "AS IS" or with a limited warranty, as set forth in the Sterling Commerce license agreement. Other than any limited warranties provided, NO OTHER WARRANTY IS EXPRESSED AND NONE SHALL BE IMPLIED, INCLUDING THE WARRANTIES OF MERCHANTABILITY AND FITNESS FOR USE OR FOR A PARTICULAR PURPOSE. The applicable Sterling Commerce entity reserves the right to revise this publication from time to time and to make changes in the content hereof without the obligation to notify any person or entity of such revisions or changes.

The Third Party Software is provided 'AS IS' WITHOUT ANY WARRANTY AND ANY EXPRESSED OR IMPLIED WARRANTIES, INCLUDING BUT NOT LIMITED TO, THE IMPLIED WARRANTIES OF MERCHANTABILITY, AND FITNESS FOR A PARTICULAR PURPOSE ARE DISCLAIMED. FURTHER, IF YOU ARE LOCATED OR ACCESSING THIS SOFTWARE IN THE UNITED STATES, ANY EXPRESS OR IMPLIED WARRANTY REGARDING TITLE OR NON-INFRINGEMENT ARE DISCLAIMED.

Table of Contents

| | | |
|------------|--|-------------|
| Preface | About This Guide | |
| | ▶ Introduction | iv |
| | ▶ Description of Contents | v |
| | ▶ Online Help | vi |
| | ▶ Getting Support | vii |
| Chapter 1 | Communications Gateway Overview | |
| | ▶ Overview | 1-2 |
| | ▶ Gentran:Server Communications Gateway | 1-3 |
| | ▶ Gentran: Server Communications Gateway Mailboxes | 1-6 |
| Chapter 2 | Configuring Communications | |
| | Overview | 2-2 |
| | ▶ Introduction | 2-2 |
| | ▶ Gentran:Server Communications Gateway Properties | 2-3 |
| | ▶ Mailbox Gateway Properties | 2-11 |
| | ▶ Mailbox Properties | 2-37 |
| | Procedures | 2-42 |
| | ▶ Configuration process | 2-42 |
| | ▶ How to Configure Your Communications Gateway | 2-43 |
| | ▶ How to Start the Communications Service | 2-46 |
| | ▶ How to Stop the Communications Service | 2-47 |
| | ▶ How to Create Communications Mailboxes | 2-48 |
| | ▶ How to Modify Mailbox Properties | 2-56 |
| Appendix A | Error Messages | |
| | ▶ Overview | A-2 |
| | ▶ Communications Gateway Messages | A-3 |
| Appendix B | Working with OFTP | |
| | ▶ Overview | B-2 |
| | ▶ Defining the SSID and SFID Commands | B-3 |
| | ▶ How to Create a Partner Definition (OFTP Remote VAN Users) | B-4 |
| | ▶ Defining the Virtual Filename and Data Format | B-6 |

About This Guide

Contents

- ▶ Introductioniv
 - ▶ Description of Contentsv
 - ▶ Online Helpvi
 - ▶ Getting Supportvii
-

Introduction

Overview

This document contains the tasks you must follow to:

- configure the Communications Gateway
- create Communications Gateway mailboxes for your Trading Partners

Intended audience

The intended audience for this document is:

- Gentran:Server system administrators
- advanced Gentran:Server users

Prerequisite knowledge

The audience using this software should be familiar with:

- Microsoft® Windows
 - Gentran:Server
 - Communications protocols
-

Description of Contents

Introduction

This guide is organized into the tasks that you complete when configuring communications for the Communications Gateway.

Organization of chapters

The guide is organized into chapters. A brief description of each chapter's contents follows.

- *About this Guide* explains the content and organization of this guide.
- *Communications Gateway Overview* provides a high-level overview of the Communications Gateway.
- *Configuring Communications* explains the process for configuring the Communications Gateway. This chapter also provides the procedures you must follow to configure your Communications Gateway mailboxes.
- *Error Messages* describes the gateway error messages and suggested user actions.
- *Working with OFTP* explains set up considerations for use with OFTP (Odette File Transfer Protocol).

Related topic

The “Script Language Reference Guide” describes the script language provided for use with the Gentran:Server for Windows communications subsystem.

Reference

See the “Script Language Reference” chapter of the “Script Language Reference Guide” for additional information.

Online Help

Introduction

The majority of the documentation for this gateway is contained in the online Help system. This includes all the dialog box element definitions, detailed processing information, and all the “how to” information that is contained in this manual.

Field-level Help

To view field-level descriptions for Mailbox Server gateways, navigate to the component for which you want field-level descriptions. Press **F1** to display a parts and functions table.

Getting Support

Introduction Sterling Commerce's software is supported by trained product support personnel who are available to help you with product questions or concerns.

Phone number For assistance, please refer to your *Getting Started Guide* to determine which support phone number you should use.

Before calling support To help us provide prompt service, we ask that you do the following:

- Attempt to recreate any problem that you encounter and record the exact sequence of events.
- When you call product support, you should be prepared to provide us with the information below.

| Information | Description |
|----------------------|---|
| Identification | Your company name, your name, telephone number and extension, and the case number (if the question refers to a previously reported issue). |
| System Configuration | The Gentran:Server version (and any service packs installed) and information about the primary Gentran system controller and all machines experiencing problems, including: the Windows operating system version, amount of memory, available disk space, database version, Microsoft Data Access (MDAC) version, and Internet Explorer version. Also, please describe any recent changes in your hardware, software, or the configuration of your system. |
| System Data Store | Which machines contain folders in the system data store? |
| Error Messages | Record the exact wording of any error messages you receive and the point in the software where the error occurred, as well as any log files. |
| Attempted Solutions | Record any steps that you took attempting to resolve the problem and note all the outcomes, and provide an estimate on how many times the problem occurred and whether it can be reproduced. |

Accessing the Sterling Commerce Support Web Site

The Sterling Commerce Customer Support Web Site contains valuable information about getting support for Gentran:Server for Windows, including the:

- scope of support services
- customer support policies
- call prioritizing
- customer support phone directory
- how to create new Support on Demand cases
- how to check the status of Support on Demand cases
- how to add information to Support on Demand cases

The Customer Support Web Site is constantly updated and all Sterling Commerce customers have access to it. This web site also contains the most recent product updates and is a valuable source of product information.

Reference

Refer to the *Getting Started Guide* for information on how to access the Customer Support World Wide Web Site.

Documentation

The Customer Support Web Site contains a documentation library, which has the entire Gentran:Server for Windows documentation set. You can download the product manuals in PDF format from this library at any time.

Communications Gateway Overview

| | | |
|-----------------|--|-------|
| Contents | • Overview | 1 - 2 |
| | • Gentran:Server Communications Gateway | 1 - 3 |
| | • Gentran: Server Communications Gateway Mailboxes | 1 - 6 |

Overview

In this chapter This chapter provides you with a high-level overview of the Communications Gateway.

What is a gateway? Gateways are software components that control the transmission of messages between two parties. The gateway is responsible for using the correct protocols to transfer messages between the sender and receiver.

You are responsible for defining the properties of the gateways that you use.

What is a mailbox? Mailboxes store messages that are being transferred between mail recipients. Like a mailbox for paper mail, the messages are stored in the mailbox until they are transferred to the addressee.

There are two types of Gentran:Server mailboxes:

- non-gateway mailboxes
- gateway mailboxes

Non-gateway mailboxes

When you installed Gentran:Server, a default, non-gateway mailbox was created called the Gentran Application mailbox. This mailbox is used by Mailbox Server to hold messages that are being transferred between Gentran:Server for Windows and your Trading Partners.

Gateway mailboxes

You are responsible for creating gateway mailboxes. When you create gateway mailboxes you associate the mailbox with a gateway. The properties you define for each gateway mailbox determines how messages are transferred to your Trading Partners.

Related Topic See the Communications Overview chapter of the *Gentran:Server Communications User's Guide* for detailed information on the Mailbox Server system.

Gentran:Server Communications Gateway

Introduction The Gentran:Server Communications Gateway is used when you exchange business documents with your Trading Partners through a Value Added Network (VAN) or directly to your Trading Partner's computer system.

Purpose The purpose of the Gentran:Server Communications Gateway is to establish a communications session with a VAN or Trading Partner computer. This gateway uses communications scripts to log on to the VAN or Trading Partner computer, and to send and to receive messages.

Communications scripts Communications processes are controlled by Mailbox Server and by a suite of communications scripts provided by Sterling Commerce, Inc. The basic Mailbox Server that is delivered as part of Gentran:Server for Windows provides you with the ability to communicate with your Trading Partners.

Content type and subtype The content type and subtype values are used to indicate the Internet media type of the information being transmitted. The content type determines the mechanism to use to display the data.

You determine which action the system performs on each type of data by the values selected on the Mailbox tab of the System Configuration dialog box.

Example

Application/EDI is an application program type with a subtype of EDI (representing Electronic Data Interchange data). When Gentran:Server receives a message with an Application/EDI content type and subtype, it runs the GDW_Process_MBFile command on the message.

Note

Messages containing undefined content types remain in the Gentran Application mailbox until the content type has been defined.

Reference

See the *Gentran:Server Administration Guide* for information on the Mailbox tab of the System Configuration dialog box.

Acceptable content types and subtypes

Gentran:Server accepts, by default, the following content type / subtype combinations:

- Application/EDI
- Application/Import
- Application/Document-EDI

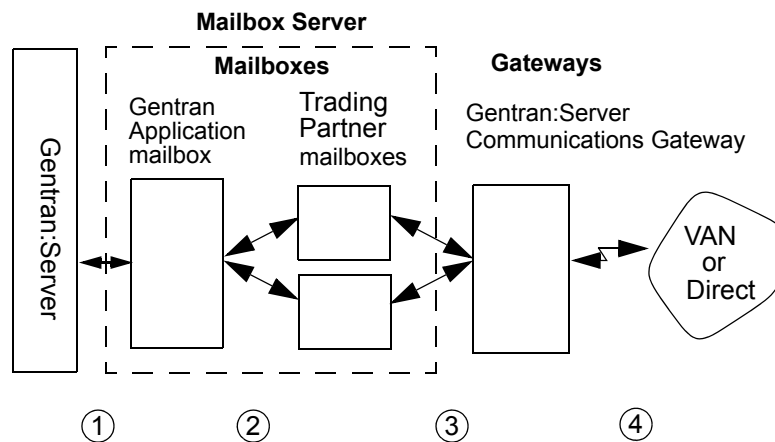
Configuring the gateway

You must configure the Gentran:Server Communications Gateway before you can begin to transfer messages to a Trading Partner. This procedure involves selecting the:

- communications controller that services the modem or network card you are using to communicate with your Trading Partners
- device pool containing the modem or network card you intend to use with this gateway
- attachment content type defaults to be assigned to messages that are transferred through this gateway

Message flow diagram

This diagram shows the flow of messages using the Gentran:Server Communications Gateway. The numbers in this diagram correspond to the stages listed in *Message flow description* on page 1 - 5.



Message flow description

This table describes the flow of messages using the Gentran:Server Communications Gateway.

| Stage | Description |
|-------|--|
| 1 | All messages going to and from Gentran:Server are stored in the Gentran Application mailbox. |
| 2 | Messages are transferred between the Gentran Application mailbox and the Trading Partner mailboxes that you have created on Mailbox Server. |
| 3 | The Trading Partner mailbox properties determine how your messages are transferred to your Trading Partners. |
| 4 | The Gentran:Server Communications Gateway connects to your Trading Partner's VAN, or directly to your Trading Partner's system and routes messages to the appropriate mailbox. A communications session may send, receive, or send and receive messages. |

Gentran: Server Communications Gateway Mailboxes

Introduction

When you configure a mailbox to be used with the Gentran:Server Communications Gateway, you define the following:

- transport properties for this mailbox, such as:
 - Asynchronous
 - Bisynchronous
 - TCP/IP (Transmission Control Protocol / Internet Protocol)
 - FTP (File Transfer Protocol)
 - WS_FTP Pro File Transfer Program
 - ISDN (Integrated Services Digital Network)
 - EICON X.25T

These properties determine the format, timing, and error control for data transmission.

- communications script to use with this mailbox
- default message content types
- a list of message recipients

Reference

See *Configuring Communications*, chapter 2 of this guide, for complete instructions on configuring Gentran:Server Communications Gateway mailboxes.

Configuring Communications

| | | |
|-----------------|---|---------------|
| Contents | Overview | 2 - 2 |
| | ▶ Introduction..... | 2 - 2 |
| | ▶ Gentran:Server Communications Gateway Properties..... | 2 - 3 |
| | ▶ Mailbox Gateway Properties..... | 2 - 11 |
| | ▶ Mailbox Properties..... | 2 - 37 |
| | Procedures | 2 - 42 |
| | ▶ Configuration process..... | 2 - 42 |
| | ▶ How to Configure Your Communications Gateway..... | 2 - 43 |
| | ▶ How to Start the Communications Service..... | 2 - 46 |
| | ▶ How to Stop the Communications Service..... | 2 - 47 |
| | ▶ How to Create Communications Mailboxes..... | 2 - 48 |
| | ▶ How to Modify Mailbox Properties..... | 2 - 56 |

Overview

Introduction

In this chapter

This chapter describes the tasks that you must complete to configure your Communications Gateway and Communications Gateway mailbox.

Key Terms

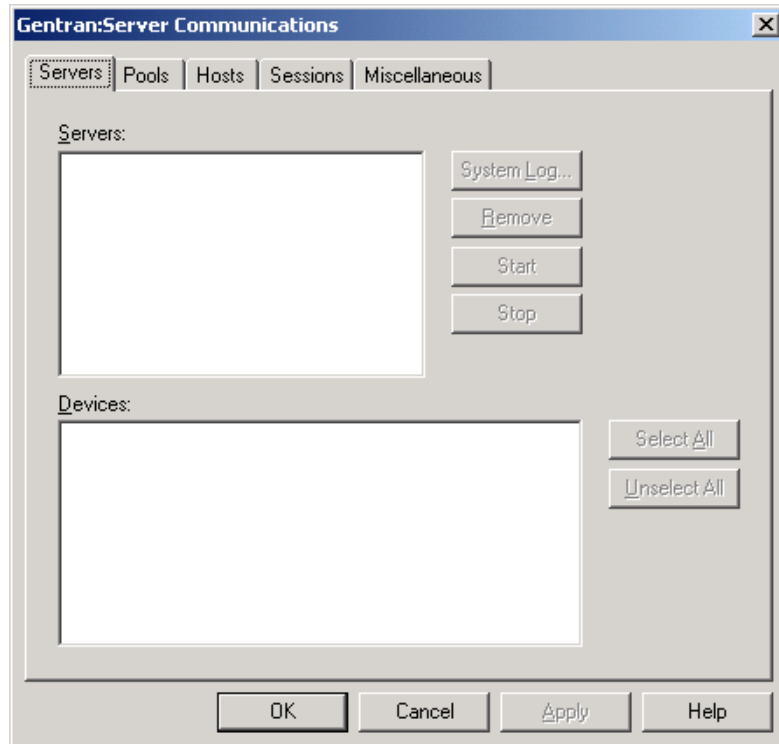
This table describes key terms used in this chapter.

| Term | Description |
|---------------------------|--|
| pool | A collection of communications devices. |
| communications controller | A computer that controls communications sessions. |
| communications gateway | Software or a computer running software that enables two different computers to communicate. |
| mailbox | A folder or set of folders used to store messages. |

Gentran:Server Communications Gateway Properties

Introduction The Gentran:Server Communications Gateway dialog box is used to configure telecommunications with your Trading Partners.

Servers tab This illustration shows an example of the Servers tab of the Gentran:Server Communications dialog box.



Parts and functions This table describes the parts of the Servers tab of the Gentran:Server Communications dialog box and their functions.

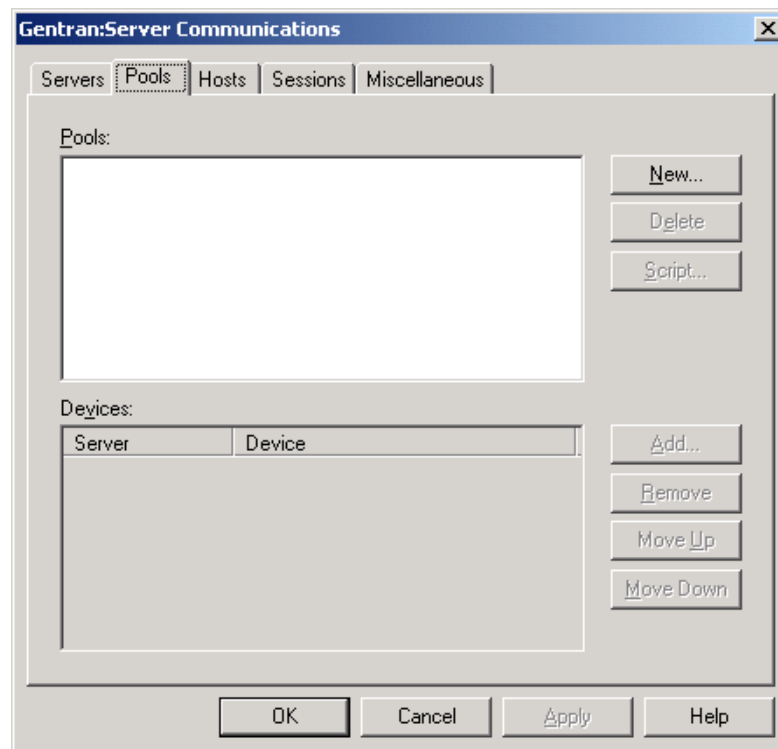
| Part | Function |
|---------|---|
| Servers | Displays the communications controllers available to Mailbox Server. You may have multiple communications controllers in your Mailbox Server system. |
| Devices | Displays the devices available for use with Mailbox Server. The devices shown in this list are the devices for each respective communications controller. |

(Continued on next page)

| (Contd) Part | Function |
|-------------------------|---|
| System Log | Views the log information for a specific communications controller. |
| Remove | Removes the selected communications controller from the list. |
| Start | Starts communications services on the selected controller. |
| Stop | Stops communications services on the selected controller. |
| Select All | Selects all devices for the selected controller. |
| Unselect All | Unselects all devices for the selected controller. |
| OK | Saves and applies changes; exits the dialog box. |
| Cancel | Cancels changes; exits dialog. |
| Apply | Applies changes. |
| Help | Launches the online Help system. |

Pools tab

This illustration shows an example of the Pools tab of the Gentran:Server Communications dialog box.



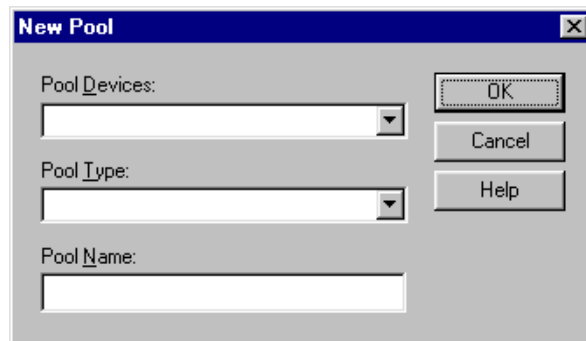
Parts and functions

This table describes the parts of the Pools tab of the Gentran:Server Communications dialog box and their functions.

| Part | Function |
|-----------|---|
| Pools | Lists user-defined device pools. |
| Devices | Lists the devices assigned to a specific pool. |
| New | Adds a new device pool. |
| Delete | Removes a device pool. |
| Script | Allows you to select and edit a communications script. (This button is available only for Host or Host and Remote pools.) |
| Add | Adds devices that are not already part of another pool. |
| Remove | Removes devices from a pool. |
| Move Up | Moves a device up in the list order. |
| Move Down | Moves a device down in the list order. |
| OK | Saves and applies changes; exits the dialog box. |
| Cancel | Cancel changes; exits dialog. |
| Apply | Applies changes. |
| Help | Launches the online Help system. |

New Pool

This illustration shows an example of the New Pool dialog box.



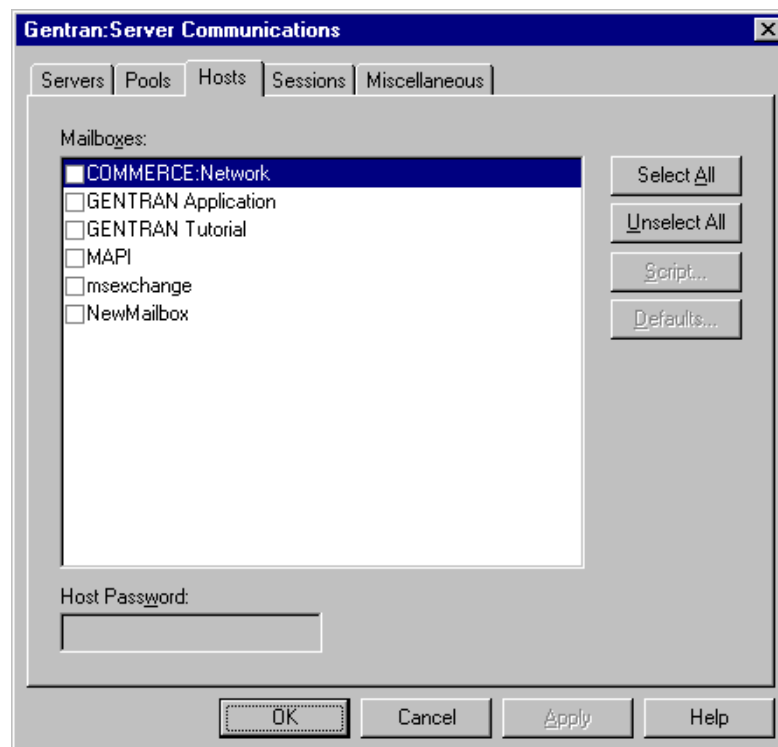
Parts and Functions

This table describes the parts of the New Pool dialog box and their function.

| Part | Function |
|---------------|--|
| Pool Device | Choose a pool device from the list. This list determines the type of communications device you are using. |
| Pool Type | Choose a pool type from the list. This type determines whether you are initiating, receiving, or initiating and receiving communications sessions. |
| Pool Name | Type a unique identifier for this pool in this field. |
| OK | Closes this dialog and saves any changes you have made. |
| Cancel | Closes this dialog without saving any changes you have made. |
| Help | Click this button to display the online help. |

Hosts tab

This illustration shows an example of the Hosts tab of the Gentran:Server Communications dialog box.

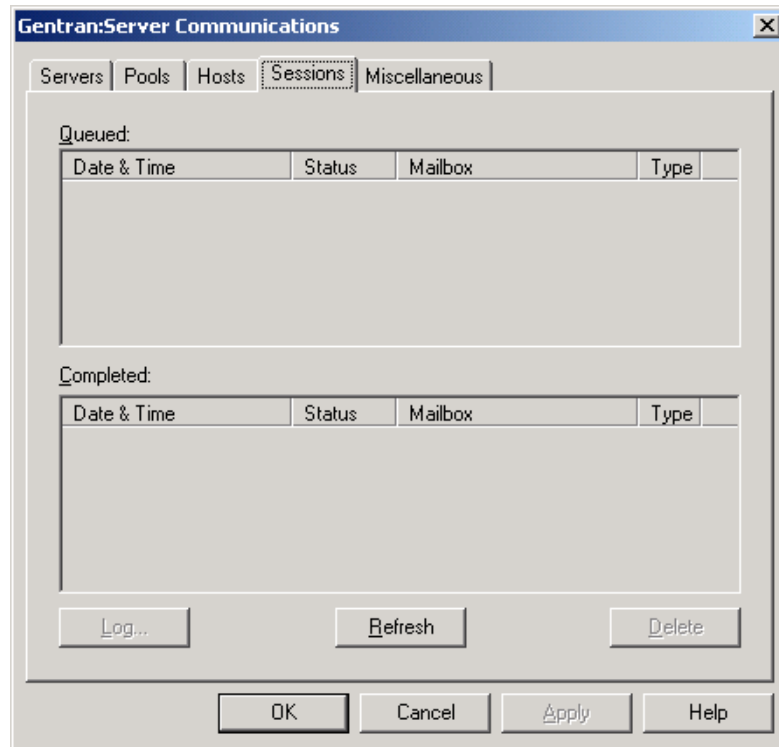


Parts and functions

This table describes the parts of the Hosts tab of the Gentran:Server Communications dialog box and their functions.

| Part | Function |
|---------------------|---|
| Mailboxes | Displays the list of mailboxes. A check mark next to the mailbox denotes that it has been set up as a host mailbox. |
| Host Password | Defines the password your Trading Partner must use to access the selected mailbox. |
| Select All | Selects all mailboxes. |
| Unselect All | Clears all check boxes. |
| Script | Defines the Advanced Data Distribution communications script to use with the selected host mailbox. |
| Defaults | Defines the default message content type and subtype for the selected mailbox, and the default message recipients. |
| OK | Saves changes; exits dialog box. |
| Cancel | Cancels changes; exits dialog box. |
| Apply | Applies changes. |
| Help | Launches online Help. |

Sessions tab This illustration shows an example of the Sessions tab of the Gentran:Server Communications dialog box.

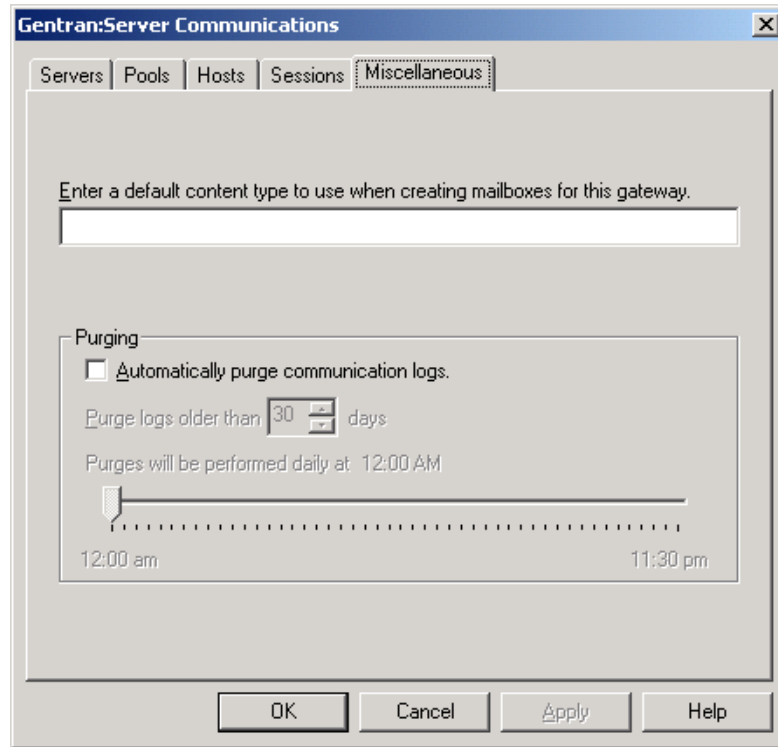


Parts and functions This table describes the parts of the Sessions tab of the Gentran:Server Communications dialog box and their functions.

| Part | Function |
|----------------|---|
| Queued | Shows all communications sessions in a queued or running state for all communications controllers. |
| Completed | Shows all communications sessions with a status of successful or failed for all communications controllers. |
| Log | Displays the log for all completed sessions. |
| Refresh | Repaints the screen updating the display with new information. |
| Delete | Deletes the selected completed session from the log. |
| OK | Saves and applies changes; exits the dialog box. |
| Cancel | Cancels changes; exits dialog. |
| Apply | Applies changes. |
| Help | Launches the online Help system. |

Miscellaneous tab

This illustration shows an example of the Miscellaneous tab of the Gentran:Server Communications dialog box.



Parts and functions

This table describes the parts of the Miscellaneous tab of the Gentran:Server Communications dialog box and their function.

| Part | Function |
|--|---|
| Default content type | Defines the default MIME content type and subtype for mailboxes that use this gateway. |
| Automatically purge communication logs | Defines whether communication logs will be purged. The default is to leave this option disabled. |
| Purge logs older than __ days | Defines the number of days that Mailbox Server retains communication logs before purging them. |
| Purges will be performed at | Sets the time at which communication logs will be purged. |
| OK | Saves and applies changes; exits the dialog box. (Continued on next page) |

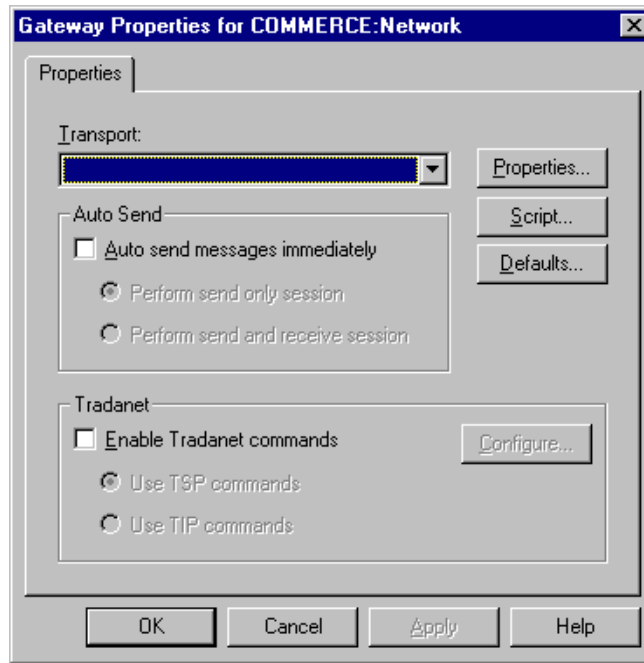


| (Contd) Part | Function |
|-------------------------|----------------------------------|
| Cancel | Cancels Changes; exits dialog. |
| Apply | Applies changes. |
| Help | Launches the online Help system. |

Mailbox Gateway Properties

Introduction The Gateway Properties dialog box defines the properties for the mailbox that you created.

Gateway Properties This illustration shows an example of the Gateway Properties dialog box.



Parts and functions This table describes the parts of the Gateway Properties dialog box and their functions.

| Part | Function |
|-------------------|---|
| Transport | Enables you to select transport type. |
| Properties | Enables you to define properties for the transport type that you selected. |
| Script | Launches Script Editor. |
| Defaults | Launches the Message Defaults dialog box; enables you to set default Content type for messages and attachments. |
| Auto Send | Enables you to define Auto Send properties. |
| Tradanet | Enables you to define Tradanet properties. |
| OK | Saves and applies changes; exits the dialog box. |

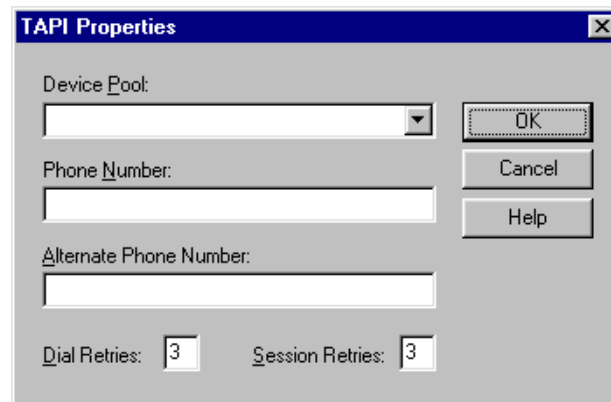
(Continued on next page)



| (Contd) Part | Function |
|-------------------------|----------------------------------|
| Cancel | Cancels changes; exits dialog. |
| Apply | Applies changes. |
| Help | Launches the online Help system. |

TAPI Properties

This illustration shows an example of the TAPI Properties dialog box.



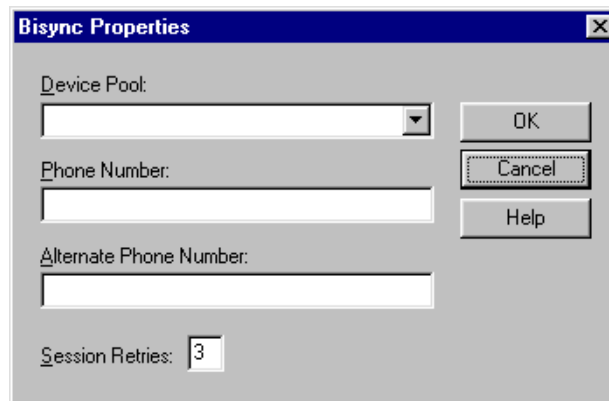
TAPI Properties

This table describes the parts of the TAPI Properties dialog box and their function.

| Part | Function |
|-----------------|--|
| Device Pool | Choose a communications device pool from the list. |
| Phone Number | Type the phone number of the computer you want to contact in this field. |
| Dial Retries | Select the number of times you want Mailbox Server to redial the telephone number. |
| Session Retries | Select the number of times you want Mailbox Server to re-start the session. |
| OK | Closes this dialog and saves any changes you have made. |
| Cancel | Closes this dialog without saving any changes you have made. |
| Help | Click this button to display the online help. |

Bisync Properties

This illustration shows an example of the Bisync Properties dialog box.

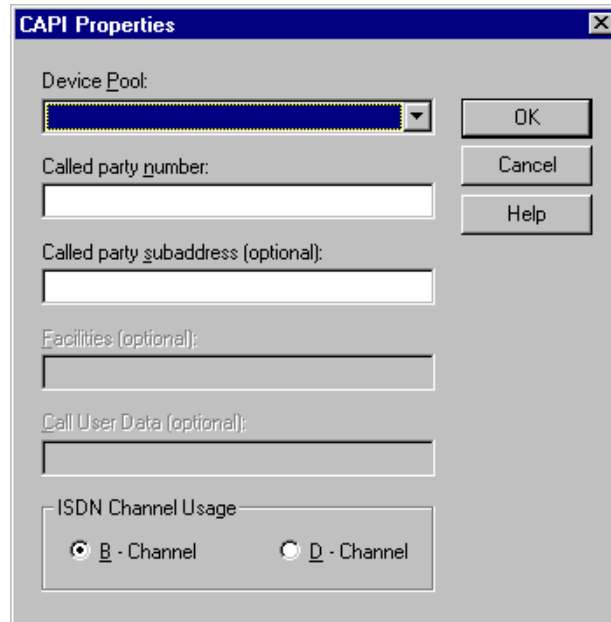
**Bisync Properties**

This table describes the parts of the Bisync Properties dialog box and their function.

| Part | Function |
|---------------|--|
| Device Pool | Type a Communications Device Pool or choose an item from the list. |
| Phone Number | Type the phone number for the VAN or Trading Partner. |
| OK | Closes this dialog and saves any changes you have made. |
| Cancel | Closes this dialog without saving any changes you have made. |
| Help | Click this button to display the online help |

CAPI Properties - B - Channel Option selected

This illustration shows an example of the CAPI Properties (with the B - Channel option selected) dialog box.



Parts and Functions

This table describes the parts of the CAPI Properties (with the B - Channel option selected) dialog box and their function.

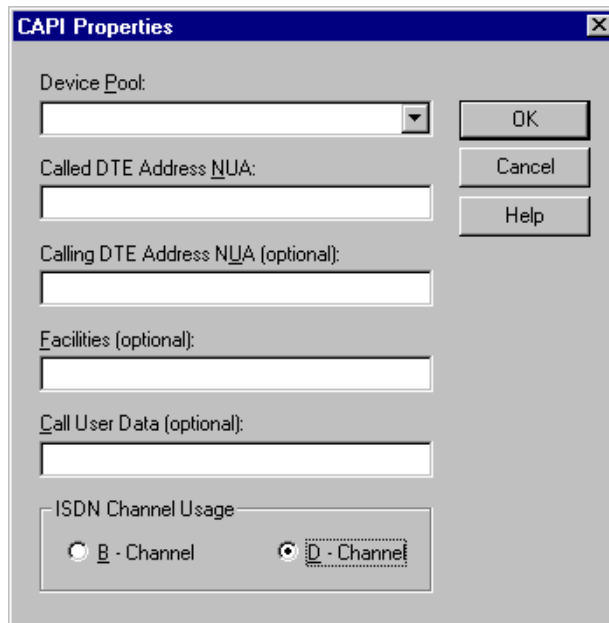
| Part | Function |
|------------------------------------|--|
| Device Pool | Type a Communications Device Pool or choose an item from the list. |
| Called party Number | Type the ISDN phone number for the VAN or Trading Partner. |
| Called party subaddress (optional) | An optional entry used for ISDN multipoint connections. |
| Facilities (optional) | Unavailable. Does not apply to B - Channel usage. |
| Call User Data (optional) | Unavailable. Does not apply to B - Channel usage. |

(Continued on next page)

| (Contd) Part | Function |
|-------------------------|--|
| ISDN Channel Usage | Determines which channel the system uses to for communications. Reference See <i>CAPI Properties - D - Channel Option selected</i> on page 2 - 15 for a description of that dialog box. |
| OK | Closes this dialog and saves any changes you have made. |
| Cancel | Closes this dialog without saving any changes you have made. |
| Help | Click this button to display the online help |

**CAPI Properties -
D - Channel Option
selected**

This illustration shows an example of the CAPI Properties (with the D - Channel option selected) dialog box.



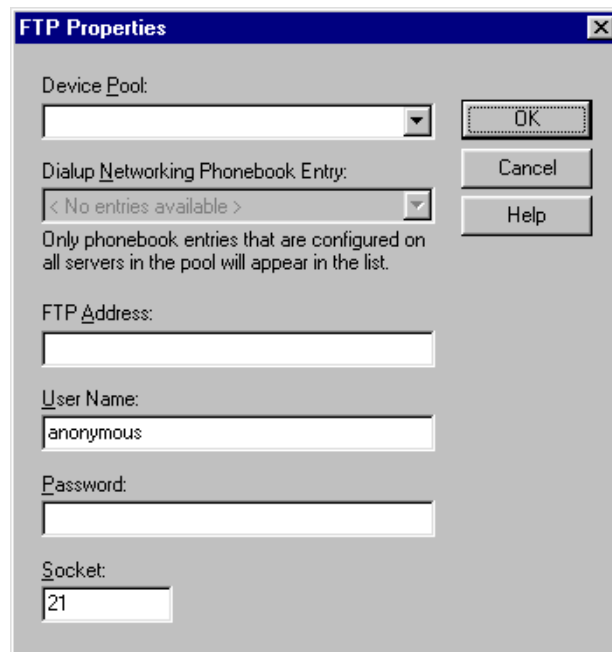
Parts and Functions

This table describes the parts of the CAPI Properties (with the D - Channel option selected) dialog box and their function.

| Part | Function |
|------------------------------------|---|
| Device Pool | Type a Communications Device Pool or choose an item from the list. |
| Called DTE Address NUA | Specifies the VAN or trading partner's Network User Address. |
| Calling DTE Address NUA (optional) | Specifies <i>your</i> Network User Address. |
| Facilities (optional) | In an X.25 packet switching data network, an optional field that the data terminal equipment (DTE) uses to convey call information to the network. |
| Call User Data (optional) | In X.25 communications, optional data that the user application includes in the call-request packet. |
| ISDN Channel Usage | Determines which channel the system uses for communications. Reference See <i>CAPI Properties - B - Channel Option selected</i> on page 2 - 14 for a description of that dialog box. |
| OK | Closes this dialog and saves any changes you have made. |
| Cancel | Closes this dialog without saving any changes you have made. |
| Help | Click this button to display the online help |

FTP Properties

This illustration shows an example of the FTP Properties dialog box.

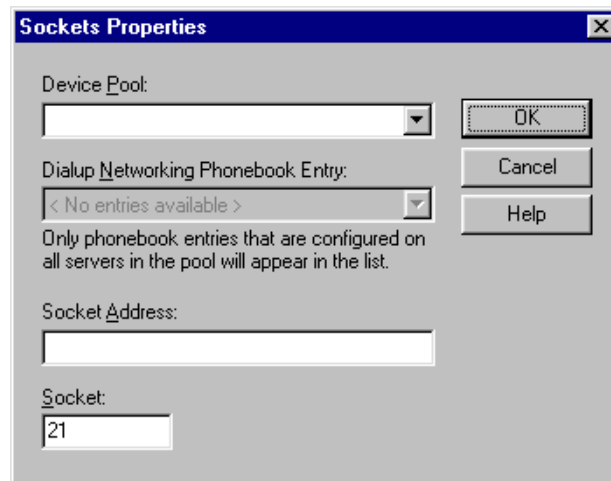
**Parts and Functions**

This table describes the parts of the FTP Properties dialog box and their function.

| Part | Function |
|-----------------------------------|--|
| Device Pool | Choose a device pool from the list. |
| Dialup Networking Phonebook Entry | Select the phone book entry that you use for dialup networking. |
| Server | Type the name of an FTP server or choose an item from the list. |
| FTP Address | Type the IP (Internet Protocol) address of the FTP server in the form XXX.XXX.XXX.XXX. |
| User Name | Type your User Name on the FTP Server. |
| Password | Type your Password on the FTP Server. |
| OK | Closes this dialog and saves any changes you have made. |
| Cancel | Closes this dialog without saving any changes you have made. |
| Help | Click this button to display the online help. |

Socket Properties

This illustration shows an example of the Socket Properties dialog box.

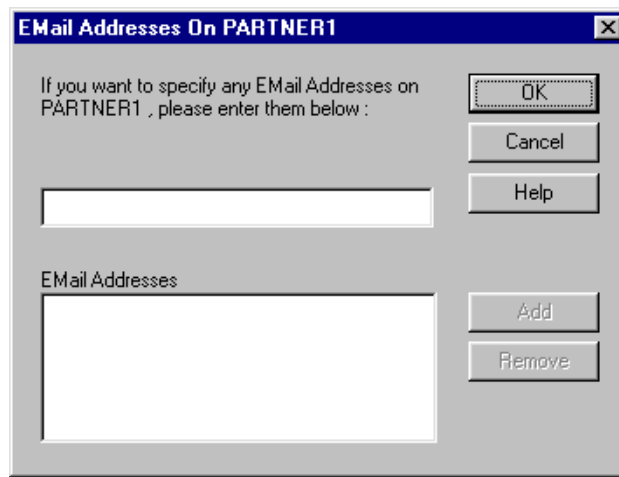
**Parts and Functions**

This table describes the parts of the Socket Properties dialog box and their function.

| Part | Function |
|-----------------------------------|--|
| Device Pool | Choose a device pool from the list. |
| Dialup Networking Phonebook Entry | Select the phonebook entry that you use for dialup networking. |
| Server | Choose a communications server from the list. |
| Socket Address | Type IP (Internet Protocol) address of the computer you want to contact. |
| Socket | Type the IP socket (port) number in this field. |
| OK | Closes this dialog and saves any changes you have made. |
| Cancel | Closes this dialog without saving any changes you have made. |
| Help | Click this button to display the online help. |

Gateway Email Addresses

This illustration shows an example of the Gateway Email Addresses dialog box.



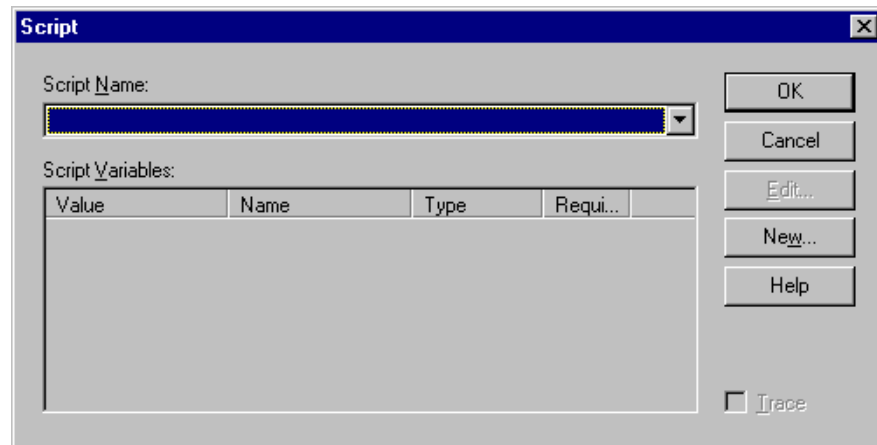
Parts and Functions

This table describes the parts of the Gateway Email Addresses dialog box and their function.

| Part | Function |
|----------------------|---|
| Email address list | Type Email address on the VAN or Trading Partner's computer. |
| Email Addresses list | This list contains all the mail addresses on the VAN or Trading Partner's computer who will receive messages. |
| OK | Closes this dialog and saves any changes you have made. |
| Cancel | Closes this dialog without saving any changes you have made. |
| Add | Click this button to add an Email Address. |
| Remove | Click this button to remove the selected Email Address. |
| Help | Click this button to display the online help. |

Script dialog box

This illustration shows an example of the Script dialog box.

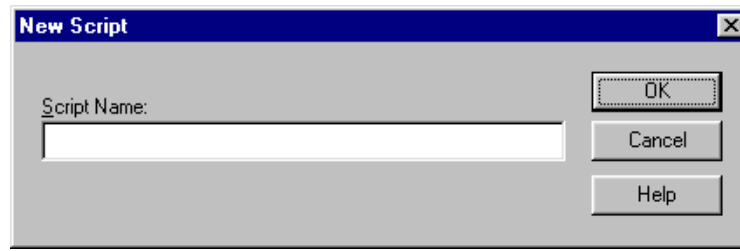
**Parts and Functions**

This table describes the parts of the Script dialog box and their function.

| Part | Function |
|------------------|---|
| Script Name | Choose a communications script from the list. |
| Script Variables | Define the values for the selected script. |
| OK | Closes this dialog and saves any changes you have made. |
| Cancel | Closes this dialog without saving any changes you have made. |
| Help | Click this button to display the online help. |
| Edit | Click this button to edit the script. |
| New | Click this button to create a new script. |
| Trace | Select this option to save trace data for the communications session. |

New Script dialog box

This illustration shows an example of the New Script dialog box.



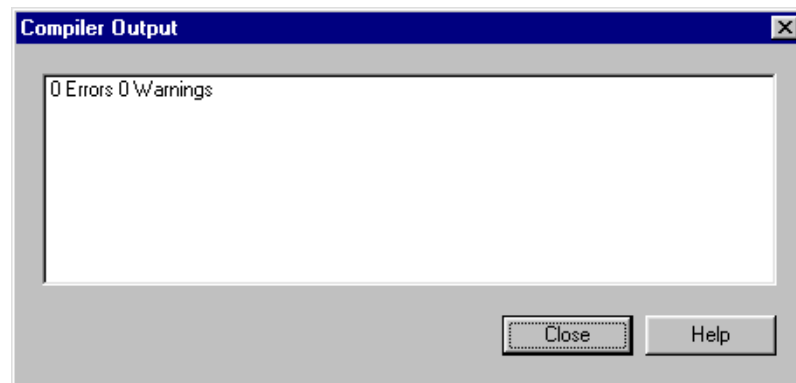
Parts and Functions

This table describes the parts of the New Script dialog box and their function.

| Part | Function |
|---------------|---|
| Script Name | Type the name of the communications script you want to use in this field. |
| OK | Closes this dialog and saves any changes you have made. |
| Cancel | Closes this dialog without saving any changes you have made. |
| Help | Click this button to display the online help. |

Compiler Output

This illustration shows an example of the New Script dialog box.



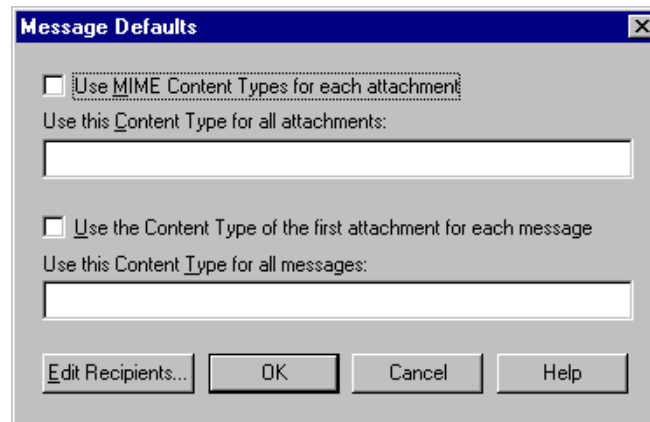
Parts and Functions

This table describes the parts of the Compiler Output dialog box and their function.

| Part | Function |
|-----------------|---|
| Compiler Output | A display of the output from the compiler. |
| Help | Click this button to display the online help. |
| Close | Click this button to close this dialog box. |

Message Defaults

This illustration shows an example of the Message Defaults dialog box.

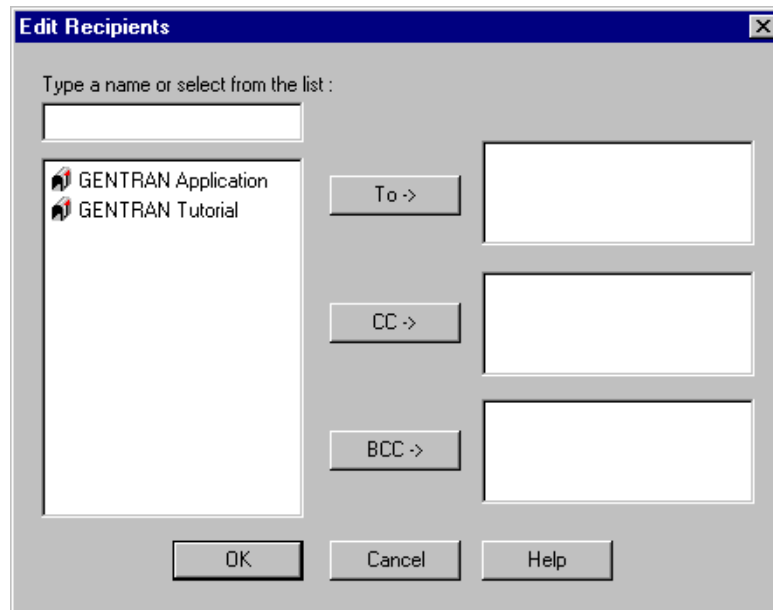
**Message Defaults**

This table describes the parts of the Message Defaults dialog box and their function.

| Part | Function |
|---|---|
| Use MIME Content Type for each attachment | Select this option to use MIME (Multipurpose Internet Mail Extension) content types for each attachment. |
| Use this Content Type for all attachments | Type a Content Type and Subtype to be used for all attachments. Example Application/EDI |
| Use the Content Type of the first attachment for each message | Select this option to use the Content Type of the first attachment in a message as the Content Type of the whole message. |
| Use this Content Type for all messages | Type a Content Type and Subtype to be used for all messages. Example Application/EDI |
| Edit Recipients | Click this button to select the recipients to send the message to. |
| OK | Closes this dialog and saves any changes you have made. |
| Cancel | Closes this dialog without saving any changes you have made. |
| Help | Click this button to display the online help. |

Edit Recipients

This illustration shows an example of the Edit Recipients dialog box.



Parts and Functions

This table describes the parts of the Edit Recipients dialog box and their function.

| Part | Function |
|-------------------------------------|---|
| Type a name or select from the list | Type a mail address or choose an item from the list. |
| Recipient | Displays a list of Email addresses. |
| To | Click this button to make this mail address a primary recipient. |
| CC | Click this button to make this mail address a secondary recipient. |
| BCC | Click this button to make this mail address a secondary recipient. This mail address will not appear in the list of mail recipients that goes with the message. |
| OK | Closes this dialog and saves any changes you have made. |
| Cancel | Closes this dialog without saving any changes you have made. |
| Help | Click this button to display the online help. |

Tradanet TSP User tab

This illustration shows an example of the Tradanet TSP User tab.

Parts and functions

This table describes the parts of the Tradanet TSP User tab and their functions.

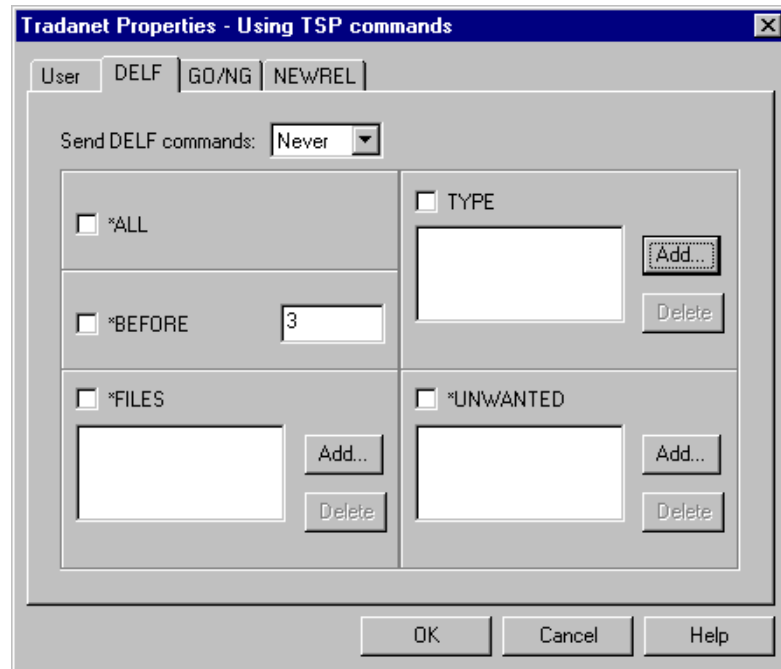
| Part | Function |
|--------------|--|
| TSP Syntax | Defines the standard data syntax used with this gateway mailbox. Valid values are: <ul style="list-style-type: none"> • ANA • ANAA • DSHB |
| Sender ID | Identifies the Sender using an EDI number or OFTP ID defined on the Tradanet Network. |
| Password | Defines the Sender's Password on the Tradanet Network. |
| New Password | Defines a new password for the user. If specified, a NEWP command is sent. |

(Continued on next page)

| (Contd) Part | Function |
|-------------------------|--|
| LISTM | Lists incoming messages in the users Tradanet Network Mailbox. Valid values are: <ul style="list-style-type: none"> • Never—never send this command. • Always—always send this command. • Once—send this command one time only. |
| LISTP | Lists outgoing messages in the users Tradanet Network Postbox. Valid values are: <ul style="list-style-type: none"> • Never—never send this command. • Always—always send this command. • Once—send this command one time only. |
| LISTR | Lists Tradanet Network relationships the user has defined. Valid values are: <ul style="list-style-type: none"> • Never—never send this command. • Always—always send this command. • Once—send this command one time only. |
| OK | Saves and applies changes; exits the dialog box. |
| Cancel | Cancels changes; exits dialog. |
| Help | Launches the online Help system. |

Tradanet TSP DELFL tab

This illustration shows an example of the Tradanet TSP DELFL tab. DELFL is used to delete files.



Parts and functions

This table describes the parts of the Tradanet TSP DELFL tab and their functions.

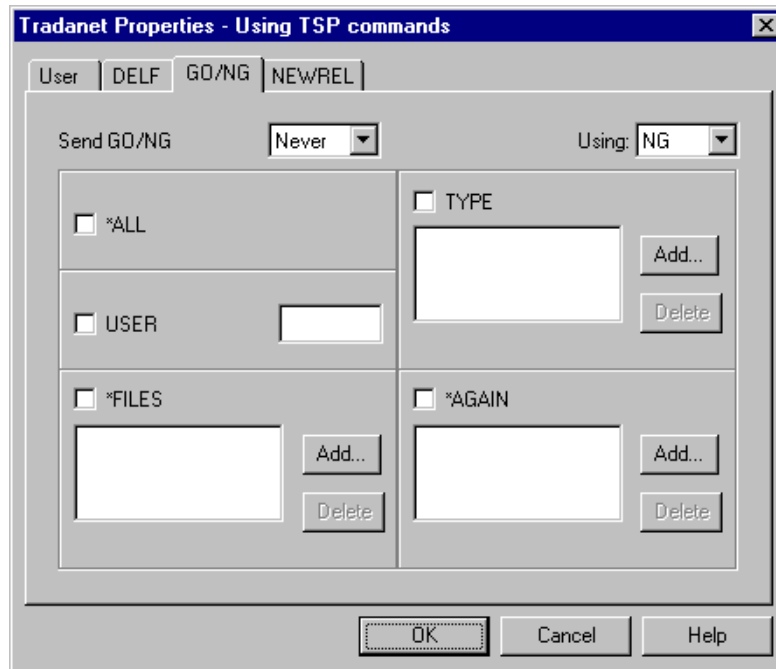
| Part | Function |
|---------------------|--|
| Send DELFL commands | Defines when you want to send DELFL commands. Valid values are: <ul style="list-style-type: none"> Never—never send this command. Always—always send this command. Once—send this command one time only |
| *ALL | Deletes all previously extracted files. |
| TYPE | Deletes all previously extracted files with the specified data type (APRF). |
| Add | Adds entries to the associated list. |
| Delete | Deletes entries from the associated list. |
| *BEFORE | Deletes all previously extracted files older than the specified number of days. |
| *FILES | Deletes only the previously extracted files that you specify. |

(Continued on next page)

| (Contd) Part | Function |
|------------------|--|
| Add | Adds entries to the associated list. |
| Delete | Deletes entries from the associated list. |
| *UNWANTED | Deletes only the unextracted files that you specify. |
| Add | Adds entries to the associated list. |
| Delete | Removes entries from the associated list. |
| OK | Saves changes; exits dialog box. |
| Cancel | Cancel changes; exits dialog box. |
| Help | Launches online Help system. |

**Tradanet TSP GO/
NG tab**

This illustration shows an example of the Tradanet TSP GO/NG tab.



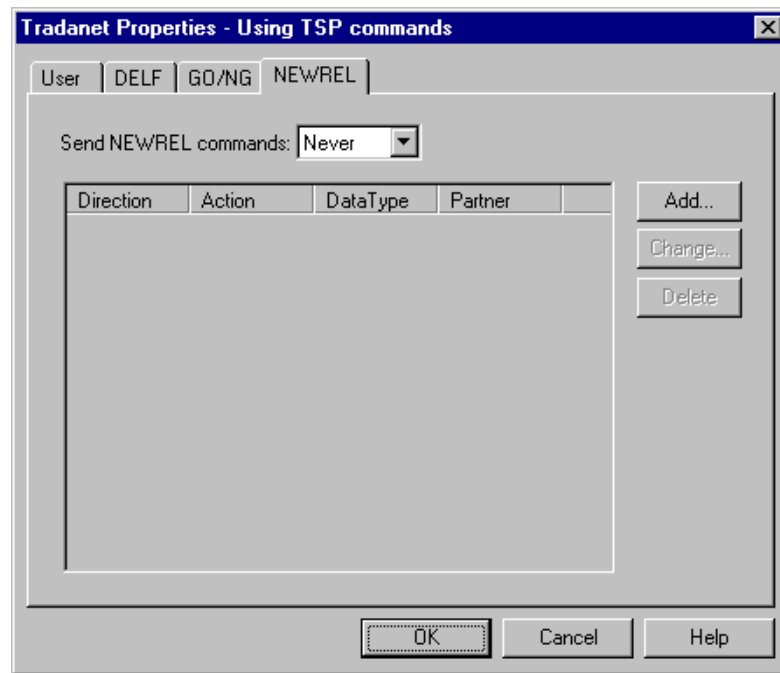
Parts and functions

This table describes the parts of the Tradanet TSP GO/NG tab and their functions.

| Part | Function |
|---------------|---|
| Send GO/NG | Defines when you want to send GO/NG commands. Valid values are: <ul style="list-style-type: none"> ▶ Never—never send this command. ▶ Always—always send this command. ▶ Once—send this command one time only. |
| Using | Selects whether to use the GO or NG command to receive files. |
| *All | Specifies that all unextracted files will be received. |
| TYPE | Receives all unextracted files with the specified data type (APRF). |
| Add | Adds entries to the associated list. |
| Delete | Removes entries from the associated list. |
| User | Receives all unextracted files from the specified user. If this command is selected, all other options will be disabled since this command cannot use the SELF (Select Files) command. |
| *FILES | Receives only the unextracted files that you specify. |
| Add | Adds entries to the associated list. |
| Delete | Removes entries from the associated list. |
| *AGAIN | Receives only the previously extracted files that you specify. |
| Add | Adds entries to the associated list. |
| Delete | Removes entries from the associated list. |
| OK | Saves changes; exits dialog box. |
| Cancel | Cancels changes; exits dialog box. |
| Help | Launches online Help system. |

**Tradanet TSP
NEWREL tab**

This illustration shows an example of the Tradanet TSP NEWREL tab.



**Parts and
functions**

This table describes the parts of the Tradanet TSP NEWREL tab and their functions.

| Part | Function |
|----------------------|--|
| Send NEWREL commands | Defines when to send NEWREL commands. Valid options are: <ul style="list-style-type: none"> ▶ Never—never send this command. ▶ Once—send this command one time only. |
| Direction | Defines the direction that files are transmitted with the Relationship. Valid values are send and receive. |
| Action | Defines action to be taken with the relationship. Valid values are establish and cancel. |
| Data Type | Defines the type of data to be transmitted to the Trading Partner. Valid values are Any or a user-defined value. |
| Partner | Defines the name of the new Trading Partner. Valid values are Anybody or a user-defined value. |
| Add | Adds relationships to the list. |
| Change | Enables you to change a relationship in the list. |

(Continued on next page)



| (Contd) Part | Function |
|-------------------------|---------------------------------------|
| Delete | Deletes a relationship from the list. |
| OK | Saves changes; exits the dialog box. |
| Cancel | Cancel changes; exits the dialog box. |
| Help | Launches the online Help system. |

Tradanet TIP User tab

This illustration shows an example of the Tradanet TIP User tab.

Parts and functions

This table describes the parts of the Tradanet TIP User tab and their functions.

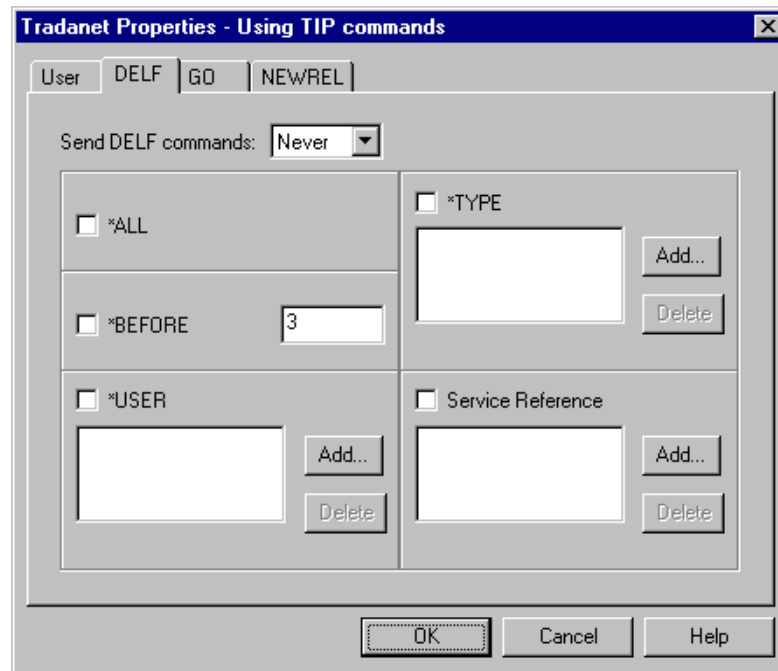
| Part | Function |
|--------------|---|
| Sender ID | Identifies the Sender using an EDI number or OFTP ID defined on the Tradanet Network. |
| Password | Defines the Sender's Password on the Tradanet Network. |
| New Password | Defines a new password for the user. If specified, a NEWP command will be sent. |

(Continued on next page)

| (Contd) Part | Function |
|-------------------------|--|
| LISTM | Lists incoming messages in the users Tradanet Network Mailbox. Valid values are: <ul style="list-style-type: none"> • Never—never send this command. • Always—always send this command. • Once—send this command one time only. |
| LISTP | Lists outgoing messages in the users Tradanet Network Postbox. Valid values are: <ul style="list-style-type: none"> • Never—never send this command. • Always—always send this command. • Once—send this command one time only. |
| LISTR | Lists Tradanet Network relationships the user has defined. Valid values are: <ul style="list-style-type: none"> • Never—never send this command. • Always—always send this command. • Once—send this command one time only. |
| OK | Saves and applies changes; exits the dialog box. |
| Cancel | Cancels Changes; exits dialog. |
| Help | Launches the online Help system. |

Tradanet TIP DELF tab

This illustration shows an example of the Tradanet TIP DELF tab.



Parts and functions

This table describes the parts of the Tradanet TIP DELF tab and their functions.

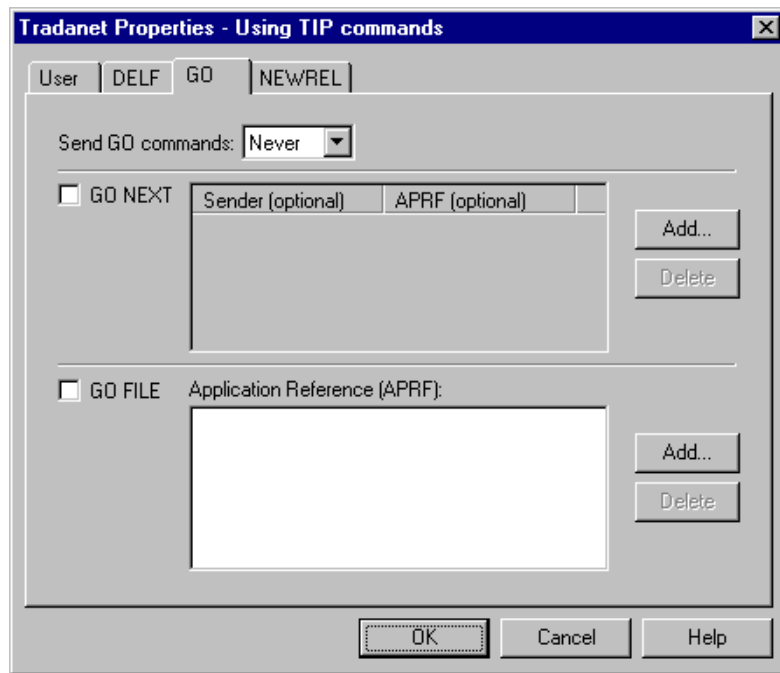
| Part | Function |
|--------------------|---|
| Send DELF commands | Defines when you want to send DELF commands. Valid values are: <ul style="list-style-type: none"> Never—never send this command. Always—always send this command. Once—send this command one time only |
| *ALL | Deletes all previously extracted files. |
| *TYPE | Deletes all previously extracted files with the specified data type (APRF). |
| Add | Adds entries to the associated list. |
| Delete | Deletes entries from the associated list. |
| *BEFORE | Deletes all previously extracted files older than the specified number of days. |
| *USER | Deletes all previously extracted files from a specified service reference. |

(Continued on next page)

| (Contd) Part | Function |
|-------------------|---|
| Add | Adds entries to the associated list. |
| Delete | Deletes entries from the associated list. |
| Service Reference | Deletes files with the specified service reference. |
| Add | Adds entries to the associated list. |
| Delete | Deletes entries from the associated list. |
| OK | Saves changes; exits dialog box. |
| Cancel | Cancel changes; exits dialog box. |
| Help | Launches online Help system. |

Tradanet TIP GO tab

This illustration shows an example of the Tradanet TIP GO tab.



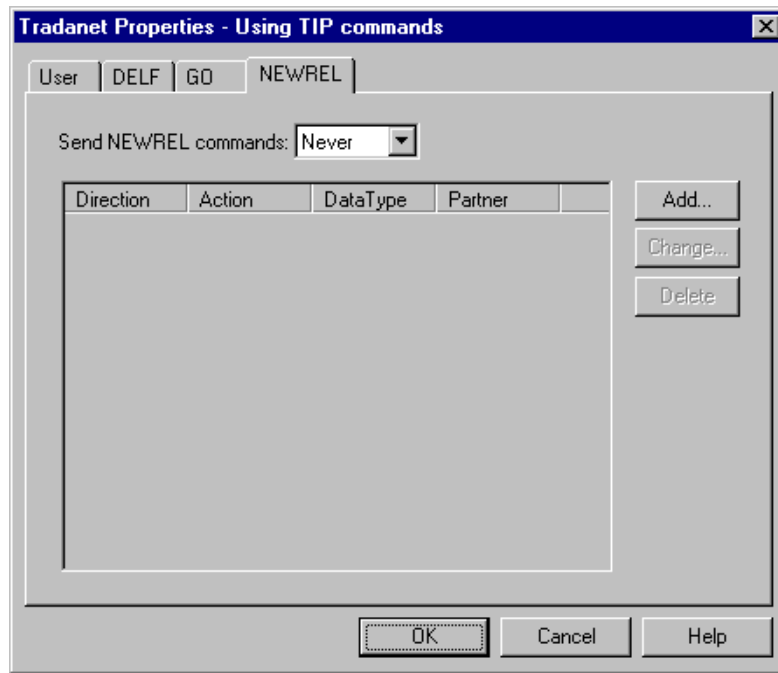
Parts and functions

This table describes the parts of the Tradanet GO tab and their functions.

| Part | Function |
|-----------------------------------|---|
| Send GO commands | Defines when you want to send GO commands. Valid values are: <ul style="list-style-type: none"> ▶ Never—never send this command. ▶ Always—always send this command. ▶ Once—send this command one time only |
| GO NEXT | Receives all unextracted files. |
| Sender (optional) list | Specifies that the service return the next logical file from the specific Sender designated. If set to blank spaces, the service retrieves the next logical file. This field can be used in conjunction with APRF (optional) list. |
| APRF (optional) list | Specifies that the service return the next logical file with an Application Reference that matches the APRF value entered. If set to blank spaces, the service retrieves the next logical file. This field can be used in conjunction with Sender (optional) list. |
| Add | Adds entries to the associated list. |
| Delete | Deletes entries from the associated list. |
| GO FILE | Retrieves the next logical file with the specified application Reference regardless of its status on the service. |
| Application Reference (APRF) list | List of Application References received. |
| Add | Adds entries to the associated list. |
| Delete | Deletes entries from the associated list. |
| OK | Saves changes; exits dialog box. |
| Cancel | Cancel changes; exits dialog box. |
| Help | Launches online Help system. |

**Tradanet TIP
NEWREL tab**

This illustration shows an example of the Tradanet TIP NEWREL tab.



**Parts and
functions**

This table describes the parts of the Tradanet TIP NEWREL tab and their functions.

| Part | Function |
|----------------------|--|
| Send NEWREL commands | Defines when to send NEWREL commands. Valid options are: <ul style="list-style-type: none"> • Never—never send this command. • Once—send this command one time only. |
| Direction | Defines the direction that files are transmitted with the Relationship. Valid values are send and receive. |
| Action | Defines action to be taken with the relationship. Valid values are establish and cancel. |
| Data Type | Defines the type of data to be transmitted to the Trading Partner. Valid values are Any or a user-defined value. |
| Partner | Defines the name of the new Trading Partner. Valid values are Anybody or a user-defined value. |
| Add | Adds a relationship to the list. |
| Change | Enables you to change relationship in the list. |

(Continued on next page)



| (Contd) Part | Function |
|-------------------------|--|
| Delete | Deletes a selected relationship from the list. |
| OK | Saves changes; exits the dialog box. |
| Cancel | Cancels changes; exits the dialog box. |
| Help | Launches the online Help system. |

Mailbox Properties

Introduction The Mailbox Properties dialog box defines the properties of the mailbox.

Addressing Tab This illustration shows an example of the Addressing tab of the Mailbox Properties dialog box.

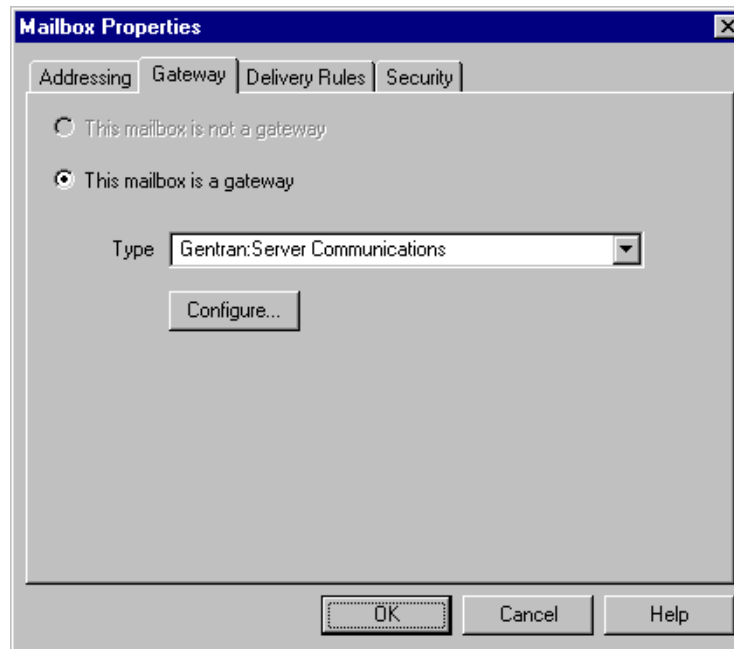


Parts and functions This table describes the parts of the Addressing tab of the Mailbox Properties dialog box and their functions

| Part | Function |
|------------------------|--|
| Name | Defines the name of the mailbox. |
| Gentran e-mail address | Defines the Gentran e-mail address for messages sent from the mailbox. |
| OK | Saves changes; exits dialog. |
| Cancel | Closes dialog without saving changes. |
| Help | Enables access to online help. |

Gateway Tab

This illustration shows an example of the Gateway tab of the Mailbox Properties dialog box.

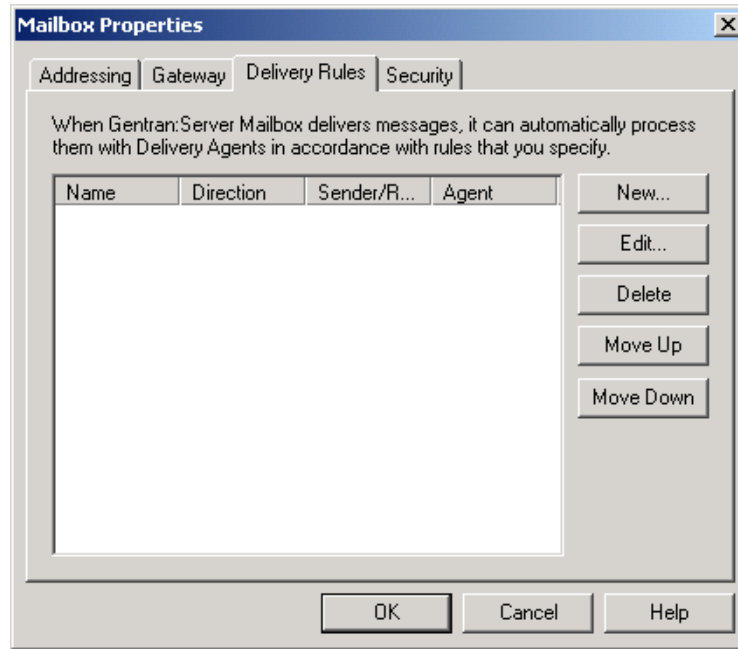
**Parts and functions**

This table describes the parts of the Gateway tab of the Mailbox Properties dialog box and their functions.

| Part | Function |
|------------------|--|
| Gateway | Specifies whether the mailbox is or is not a gateway. Options are: <ul style="list-style-type: none"> • This mailbox is not a gateway • This mailbox is a gateway |
| Type | Specifies type of gateway. Active when “This mailbox is a gateway” radio button is selected. |
| Configure | Enables you to configure properties for a selected gateway. |
| OK | Saves changes; exits dialog. |
| Cancel | Closes dialog without saving changes. |
| Help | Enables access to online help. |

Delivery Rules Tab

This illustration shows an example of the Delivery Rules tab of the Mailbox Properties dialog box.



Parts and functions

This table describes the parts of the Delivery Rules tab of the Mailbox Properties dialog box and their functions.

| Part | Function |
|------------------|---|
| Name | Defines the name of the Delivery Rule. |
| Direction | Identifies if the rule is run when sending or receiving a message. |
| Sender/Recipient | Identifies the mailbox of the sender or recipient. The mail address can be specified in addition to the mailbox name. |
| Agent | Identifies the name of the delivery agent to be run. |
| New | Creates new Delivery Rules. |
| Edit | Edits existing Delivery Rules. |
| Delete | Deletes Delivery Rules. |
| Move Up | Moves the selected Delivery Rule up. |
| Move Down | Moves the selected Delivery Rule down. |
| OK | Saves changes; exits dialog. |

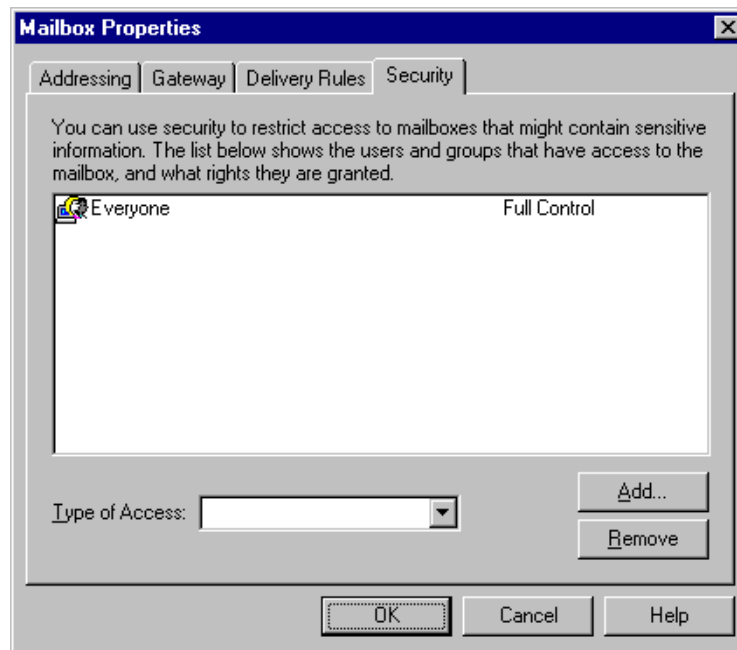
(Continued on next page)



| (Contd) Part | Function |
|-----------------|---------------------------------------|
| Cancel | Closes dialog without saving changes. |
| Help | Enables access to online help. |

Security Tab

This illustration shows an example of the Security tab of the Mailbox Properties dialog box.



Parts and functions

This table describes the parts of the Security tab of the Mailbox Properties dialog box and their functions.

| Part | Function |
|----------------|--|
| User's list | Defines users and groups that have access to mailbox. |
| Type of Access | Designates level at which a user can interact with a mailbox. Values are: <ul style="list-style-type: none"> ▶ Full control ▶ Read ▶ Write |
| Add | Enables you to grant users or groups mailbox access. (Continued on next page) |

| (Contd) Part | Function |
|-------------------------|--|
| Remove | Enables you to take away user or group mailbox access. |
| OK | Saves changes; exits dialog. |
| Cancel | Closes dialog without saving changes. |
| Help | Enables access to online help. |

Procedures

Configuration process

Configuration stages

This table lists the stages in configuring your communications for use with a VAN or a direct connection to a Trading Partner.

| Stage | Description |
|-------|---|
| 1 | Define your communications hardware using the Microsoft Windows® modems applet in the Control Panel. Reference Refer to your Microsoft Windows documentation for more information on defining communications hardware. |
| 2 | Configure the Gentran:Server Communications Gateway. Reference See <i>How to Configure Your Communications Gateway</i> on page 2 - 43 for more information. |
| 3 | Create the mailboxes you intend to use. Reference See <i>How to Create Communications Mailboxes</i> on page 2 - 48 for more information. |

How to Configure Your Communications Gateway

Introduction This section describes how to configure your Gentran:Server Communications Gateway. This gateway is used for dialing out of the Gentran:Server system.

Before you begin Ensure that the communications devices you are using for Gentran:Server communications have been defined on the Communications Controller.

Procedure Use this procedure to configure your Gentran:Server Communications Gateway.

| Step | Action |
|------|--|
| 1 | Start the Mailbox Server Manager . System Response The system displays the Server Manager browser. |
| 2 | Select Gentran:Server Mailbox in the Server Manager pane, then right-click, and select Register Server . System Response The system displays the Register Server dialog box. |
| 3 | Type the name of your Mailbox server, and click OK . |
| 4 | Expand your Mailbox Server directory tree. |
| 5 | Select Gentran:Server Communications from the Gateway folder. |
| 6 | Right-click and select Properties to define the properties for this gateway. System Response The system displays the Servers tab of the Gentran:Server Communications properties dialog box. |
| 7 | Select the communications controller you are configuring from the Servers list. System Response A list of available communications devices for that communications controller appears in the Devices list. |
| 8 | Click the check box in front of the device to be made available for pooling from the Devices list. |

(Continued on next page)

| (Contd) Step | Action |
|-------------------------|---|
| 9 | <p>Repeat Steps 1 through 8 for each communications controller in your Mailbox Server system.</p> <p>Comment Steps 1 through 8 make the communications devices on each communications controller available for use by any of the computers in the Mailbox Server system.</p> <p>Example You want to make a 56 kbps modem on CommServ1 and a 28.8kbps modem on CommServ2 available for use by any computer in your Mailbox Server system. You start the Mailbox Server Manager on CommServ1, select CommServ1 from the Servers list, and select the 56 kbps modem from the Devices list. You start the Mailbox Server Manager on CommServ2, select CommServ2 from the Servers list and select the 28.8 kbps modem from the Devices list. These modems are now available for use in device pools on the Mailbox Server system.</p> |
| 10 | <p>Select the Pools tab, and click New to add a new Pool.</p> <p>Note You can select any client in the Mailbox Server System.</p> <p>System Response The system displays the New Pool dialog box.</p> |
| 11 | Select a device from the Pool Devices list. |
| 12 | Select Remote Only from the Pool Type list. |
| 13 | Type a unique name for this pool in the Pool Name box, and click OK . |
| 14 | <p>Click Add to add the device that you selected in Step 8 to the pool.</p> <p>System Response The system displays the Add device(s) to pool dialog box.</p> |
| 15 | <p>Highlight the Server and Device name that you want to add to the pool, and click OK.</p> <p>System Response You return to the Pools tab dialog box; the device that you added displays in the Devices list.</p> |
| 16 | <p>Click OK to complete the configuration of this gateway.</p> <p style="text-align: right; color: green;">(Continued on next page)</p> |

| (Contd) Step | Action |
|-------------------------|---|
| 17 | Stop the Gentran:Server Communications service on each communications controller. Reference See <i>How to Start the Communications Service</i> on page 2 - 46 for more information. |
| 18 | Stop the Gentran:Server Mailbox service. Reference See <i>How to Stop the Mailbox Service</i> in the <i>Communications User's Guide</i> for more information. |
| 19 | Restart the Gentran:Server Mailbox service. Reference See <i>How to Start the Mailbox Service</i> in the <i>Communications User's Guide</i> for more information. |
| 20 | Restart the Gentran:Server Communications service on each communications controller. Reference See <i>How to Start the Communications Service</i> on page 2 - 46 for more information. You are now ready to create mailboxes to use with this gateway. |

How to Start the Communications Service

Introduction Normally, you must start the Gentran:Server Communications service manually when you start the Gentran:Server Executive service on the Primary System Controller. The Gentran:Server Communications service is dependent upon the Gentran:Server Mailbox service.

You may use the services applet in the Microsoft Windows Control Panel to start the Gentran:Server Communications service.

Reference

See How to Start the Mailbox Service in the *Communications User's Guide* for additional information.

Procedure Use this procedure to start the Gentran:Server Communications service.

| Step | Action |
|------|--|
| 1 | Start the Mailbox Server Manager . System Response The system displays the Server Manager browser. |
| 2 | Select the Gentran:Server Communications from the Gateway folder. |
| 3 | Right-click and select Properties to alter the properties for this gateway. System Response The system displays the Gentran:Server Communications gateway properties dialog box. |
| 4 | Select the communications controller you want to start and click Start . System Response The selected communications controller begins transmitting and receiving queued messages. |
| 5 | Repeat Step 4 for each communications controller. |
| 6 | Click OK . |

How to Stop the Communications Service

Introduction The Gentran:Server Communications service controls communications sessions between Mailbox Server and your Trading Partners.

The Gentran:Server Communications service is dependent upon the Gentran:Server Mailbox service. You may use the services applet in the Microsoft Windows Control Panel to stop the Gentran:Server Communications service.

Reference

See How to Stop the Mailbox Service in the *Communications User's Guide* for additional information.

When to use Use this procedure when you change the Pool type assigned to a device pool.

Example

You want to change a Pool that has been defined as a Remote Only Pool to be a Host pool. You must stop and restart the Gentran:Server Communications service before the modems assigned to that Pool can answer incoming calls.

Procedure Use this procedure to stop the Gentran:Server Communications service.

| Step | Action |
|------|--|
| 1 | Start the Mailbox Server Manager . System Response The system displays the Server Manager browser. |
| 2 | Select Gentran:Server Communications from the Gateway folder. |
| 3 | Right-click and select Properties to alter the properties for this gateway. System Response The system displays the Gentran:Server Communications gateway properties dialog box. |
| 4 | Select the communications controller you want to halt, and click Stop . System Response All communications using the selected communications controller ceases. |
| 5 | Repeat Step 4 for each communications controller. |
| 6 | Click OK . |

How to Create Communications Mailboxes

Introduction After you have configured the Gentran:Server Communications gateway, you must create mailboxes for each trading partner you exchange documents with.

Before you begin Before you begin creating mailboxes for your trading partners you need to have the following pieces of information:

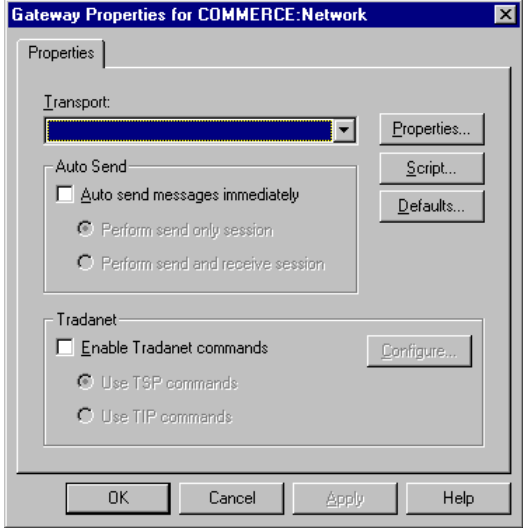
- Trading Partner name
- Trading Partner EDI code or your trading partner's email address

This information is stored in the Gentran:Server Trading Partner Editor.

Procedure Use this procedure to create mailboxes.

| Step | Action |
|------|---|
| 1 | Start the Mailbox Server Manager . |
| 2 | Select the Mailboxes folder. |
| 3 | Right-click the mouse, and select Create . System Response The system displays the Create Mailbox Wizard dialog box. |
| 4 | Type the name of the mailbox you are creating and click Next twice. System Response The system displays a dialog asking whether you want to use the mailbox as a gateway to another messaging system. |
| 5 | Click Yes, use this mailbox as a gateway . |
| 6 | Select Gentran:Server Communications as the type of gateway to use with this mailbox, and click Next . System Response The system displays the Create Mailbox Wizard - Summary dialog box. |

(Continued on next page)

| (Contd) Step | Action |
|-------------------------|---|
| 7 | <p>Is the information that you entered correct?</p> <ul style="list-style-type: none"> ▶ If yes, click Finish. ▶ If no, click the Back button to correct the information. <p>System Response The system displays the Gateway Properties dialog box.</p>  <p>Note If you attempt to create a mailbox and the data store is missing, the system generates an error message box informing you that the mailbox cannot be created. Click OK to exit the message box and click Cancel to exit the Create Mailbox Wizard.</p> <p style="text-align: right; color: green;">(Continued on next page)</p> |



| (Contd) Step | Action | |
|-------------------------|--|------------------------------------|
| 8 | Use this table to determine your next step. | |
| | IF you are using... | THEN select... |
| | asynchronous communications | TAPI from the Transport list. |
| | bisynchronous communications | BISYNC from the Transport list. |
| | TCP/IP | SOCKETS from the Transport list. |
| | File Transfer Protocol | FTP from the Transport list. |
| | WS_FTP Pro File Transfer Program Note You must install the WS_FTP program before you can begin to use this protocol to transfer messages. | WSFTP from the Transport list. |
| | ISDN | CAPI from the Transport list. |
| | Eicon X.25 communications Note You must install the Eicon X.25 hardware and software before you can begin to use this protocol to transfer messages. | EICONX.25 from the Transport list. |
| 9 | Click the Properties button and define the Transport properties. System Response The system displays the properties page for the transport type that you selected. | |
| 10 | Fill in the fields as necessary, and click OK . (Continued on next page) | |

| (Contd) Step | Action |
|-------------------------|---|
| 11 | <p>Click Script to define the script and variable values.</p> <p>System Response The system displays the Script dialog box.</p> <p>Reference See Script Language Reference in the <i>Script Language Reference Guide</i> for a description of the script language provided for use with the Gentran:Server for Windows communications subsystem.</p> |
| 12 | Click New . |
| 13 | <p>Type a unique script name, and click OK.</p> <p>System Response The system displays the Script Editor.</p> |
| 14 | <p>Select Import from the File menu.</p> <p>System Response The system displays the Import Script dialog box.</p> |
| 15 | <p>Select a script, and click Open.</p> <p>System Response A copy of the script file is loaded into the Script editor.</p> |
| 16 | <p>Select Compile from the File menu.</p> <p>System Response The new script is compiled. The system displays a dialog box that shows you that the script compiled with no errors or warnings. You are also prompted to save the changes to the file.</p> <p>Note 1 Contact Product Support if you receive errors during compilation.</p> <p>Note 2 Compiled scripts are stored with the mailbox. The original script files stored in the CommScr folder remain unaltered. This allows you to have multiple copies of the same script available for use with this mailbox.</p> |
| 17 | Close the compile dialog box, and click Yes to save the compiled script. |
| 18 | <p>Select Exit from the File menu, and click Yes at the prompt to save changes.</p> <p>System Response You are returned to the Script dialog box.</p> <p style="text-align: right;">(Continued on next page)</p> |

| (Contd) Step | Action |
|-------------------------|--|
| 19 | Select the variable you want to define and type the appropriate value in the value box. |
| 20 | <p>Have you entered values for all of the variables for this script?</p> <ul style="list-style-type: none"> ▶ If no, repeat Step 20 for each variable. Click OK to return to the Gateway Properties dialog box. ▶ If yes, click OK to return to the Gateway Properties dialog box. |
| 21 | <p>Click Defaults to define the message defaults for this gateway.</p> <p>System Response The system displays the Message Defaults dialog box.</p> |
| 22 | Type Application/EDI in the Use this Content Type for all attachments box. |
| 23 | Type Application/EDI in the Use this Content Type for all messages box. |
| 24 | <p>Click Edit Recipients.</p> <p>System Response The system displays the Edit Recipients dialog box.</p> |
| 25 | <p>Select Gentran Application and click To to forward message that you receive to Gentran:Server.</p> <p>System Response The system displays the EMail Addresses dialog box.</p> |
| 26 | <p>Do you want to specify an E-mail address?</p> <ul style="list-style-type: none"> ▶ If yes, type the value in the box. Click Add. Repeat this step for each e-mail address that you want to specify. Click OK to return to the Edit Recipients dialog box. Proceed to the next step. ▶ If no, Click OK to return to the Edit Recipients dialog box. Proceed to the next step. |
| 27 | <p>Click OK.</p> <p>System Response You return to the Message Defaults dialog box.</p> |
| 28 | <p>Click OK.</p> <p>System Response You return to the Gateway Properties dialog box.</p> <p style="text-align: right; color: green;">(Continued on next page)</p> |

| (Contd) Step | Action | |
|-------------------------|---|---|
| 29 | Do you want to Auto Send messages? • If yes, select the Auto Send check box. Select the Auto Send option that you want. Proceed to the next Step. • If no, proceed to the next Step. | |
| 30 | Are you using Tradanet? • If yes, select the Enable Tradanet commands check box. Select the command type that you want to use. Valid options are TSP and TIP. Click Configure . Proceed the next Step. • If no, click OK to save your changes and to exit the Gateway Properties dialog box. | |
| 31 | Use the following table to determine your next Step. | |
| | If you selected this Tradanet command type... | Then proceed to... |
| | TSP | <i>How to configure Tradanet TSP properties on page 2 - 53.</i> |
| | TIP | <i>How to configure Tradanet TIP properties on page 2 - 55.</i> |

How to configure Tradanet TSP properties

Use this procedure to configure Tradanet TSP properties.

| Step | Action |
|-------------|--|
| 1 | From the Tradanet Properties - Using TSP Commands dialog box, select the syntax you want to use. Recommendation We recommend that you select ANA syntax. |
| 2 | Type your EDI number or ANA User ID in the Sender box. |
| 3 | Type your Tradanet Network Password in the Password box. |
| 4 | To type a new password, type the value in the New Password box. |
| 5 | Select when to send LIST commands from the appropriate list. Valid values are: Always, Never, Once. (Continued on next page) |

| (Contd) Step | Action |
|-------------------------|---|
| 6 | Select the DELF tab and complete the DELF dialog box. Recommendation The default number of days for deleting files is 3 days for files that have been extracted. The Tradanet Network charges for storage of entries that are more than 5 days old. We recommend that you delete extracted files that are 3 days old every day. |
| 7 | Select the GO/NG tab and complete the GO/NG dialog box. |
| 8 | Select the NEWREL tab and complete the NEWREL dialog box. Note Use the NEWREL dialog box only when creating or removing trading relationships on the Tradanet Network. |
| 9 | Click Add . System Response The system displays the NewRel - Add dialog box. |
| 10 | Select the Direction . |
| 11 | Select the Action . |
| 12 | Select the Data Type . |
| 13 | Select the Trading Partner . |
| 14 | Click OK . System Response You return to the Tradanet Properties dialog box. |
| 15 | Click OK to save your changes and to return to the Gateway Properties dialog box. |
| 16 | Click OK to exit the Gateway Properties dialog box. |

How to configure Tradanet TIP properties

Use this procedure to configure Tradanet TIP properties.

| Step | Action |
|------|---|
| 1 | From the Tradanet Properties - Using TIP Commands dialog box, type your ANA User ID in the Sender ID box. |
| 2 | Type your Tradanet Network Password in the Password box. Note Your password is not displayed as you type it. To type a new password, type the value in the New Password box. |
| 3 | Select when to send LIST commands from the appropriate list. Valid values are: Always, Never, Once. |
| 4 | Select the DELFL tab and complete the DELFL dialog box. Recommendation The default number of days for deleting files is 3 days for files that have been extracted. The Tradanet Network charges for storage of entries that are more than 5 days old. We recommend that you delete extracted files that are 3 days old every day. |
| 5 | Select the GO tab and complete the GO dialog box. |
| 6 | Select the NEWREL tab and complete the NEWREL dialog box. Note Use the NEWREL dialog box only when creating or removing trading relationships on the Tradanet Network. |
| 7 | Click Add . System Response The system displays the NewRel - Add dialog box. |
| 8 | Select the Direction . |
| 9 | Select the Action . |
| 10 | Select the Data Type . |
| 11 | Select the Trading Partner . |
| 12 | Click OK . System Response You return to the Tradanet Properties dialog box. |
| 13 | Click OK to save your changes and to return to the Gateway Properties dialog box. |
| 14 | Click OK to exit the Gateway Properties dialog box. |

How to Modify Mailbox Properties

Introduction This section describes how to modify mailbox properties that were created using the Create Mailbox Wizard.

Procedure Use this procedure to modify mailbox properties.

| Step | Action | |
|------|---|-------------------------------|
| 1 | Start the Mailbox Server Manager . | |
| 2 | Expand the Mailboxes folder. | |
| 3 | Select the mailbox for which you want to add or modify properties. | |
| 4 | Right-click and select Properties from the short-cut menu. System Response The system displays the Mailbox Properties dialog box. | |
| 5 | Use this table to determine your next step. | |
| | IF you want to change the mailbox's... | THEN click this tab... |
| | <ul style="list-style-type: none"> ▶ name ▶ Gentrans E-mail address | Addressing |
| | <ul style="list-style-type: none"> ▶ Gateway properties ▶ Configuration properties | Gateway |
| | delivery rules | Delivery Rules |
| | user security permissions | Security |
| 6 | Make the appropriate modifications and click OK to save changes and to exit the dialog box. | |

Error Messages

| | | |
|-----------------|---|-------|
| Contents | • Overview | A - 2 |
| | • Communications Gateway Messages | A - 3 |



Overview

In this appendix

This appendix describes the messages that this gateway generates. If you are working with the communications subsystem through the Mailbox Server Manager, the user interface displays messages interactively.

Communications Gateway Messages

Introduction This topic provides you with the error messages that the Communications Gateway writes to the Audit Log.

Reference

See Configuring Communications, chapter 2 in this guide, for more information on configuration procedures.

Messages This table describes error messages associated with this gateway.

| Msg ID | Message Text | Explanation/Your Action |
|--------|--|---|
| 5 | StartServiceCtrlDispatcher failed: [(numeric error code)] [(error message description)]. | <p>Explanation This error occurs if the service fails to start.</p> <p>Your Action Contact customer support.</p> |
| 8 | OpenSCManager failed: [(numeric error code)] [(error message description)]. | <p>Explanation This error occurs when the system is unable to open the service control manager when performing an install or remove service command line function.</p> <p>Your Action Contact customer support.</p> |
| 9 | GetModuleFileName failed: [(numeric error code)] [(error message description)]. | <p>Explanation This error occurs when an attempt is made to get the module name to perform an install or remove service command line function.</p> <p>Your Action Contact customer support.</p> |
| 10 | CreateService [(service name)] failed: [(numeric error code)] [(error message description)]. | <p>Explanation This error occurs when calling the CreateService function to perform an install service command line function.</p> <p>Your Action Contact customer support.</p> |

(Continued on next page)

| (Contd) | Message Text | Explanation/Your Action |
|----------------|--|--|
| 11 | CLAPIInitialise failed. | <p>Explanation The CLAPI interface used to communicate with the Gentran:Server system failed to initialize.</p> <p>Your Action Contact customer support.</p> |
| 12 | OpenService [(service name)] failed: [(numeric error code)] [(error message description)]. | <p>Explanation This error occurs when calling the OpenService function to perform a remove service command line function.</p> <p>Your Action Contact customer support.</p> |
| 13 | DeleteService [(service name)] failed: [(numeric error code)] [(error message description)]. | <p>Explanation This error occurs when calling the DeleteService function to perform a remove service command line function.</p> <p>Your Action Contact customer support.</p> |
| 15 | RegisterServiceCtrlHandler failed: [(numeric error code)] [(error message description)]. | <p>Explanation This error occurs if the call to register the service control handler fails in service main.</p> <p>Your Action Contact customer support.</p> |
| 16 | RPC failed to connect to Primary Controller. | <p>Explanation This error occurs if an RPC connection to the primary controller could not be established.</p> <p>Your Action Contact customer support.</p> |
| 18 | Gentran:Server Communications requires Windows Version 4.0 (Build 1381) or higher. | <p>Explanation An incompatible version of Windows was detected.</p> <p>Your Action Install or upgrade to Windows 4.0 (Build 1381) or higher with the latest service pack.</p> <p style="text-align: right; color: green;">(Continued on next page)</p> |

| (Contd) | Message Text | Explanation/Your Action |
|----------------|--|--|
| 50000 | [(mailbox function)] failed with code [(error code number)] at line [(line in the code caused the error)]. | <p>Explanation This is a generic error message used when calls to mailbox fail.</p> <p>Your Action Contact customer support.</p> |
| 50001 | CArchive exception occurred at line [(line in the code that caused the error)]. | <p>Explanation This is a generic error message used when a CArchive exception occurs.</p> <p>Your Action Contact customer support.</p> |
| 50002 | RpcServerUseProtseqEp (Named Pipe) failed at line [(line in the code that caused the error)]: [(RPC error)]. | <p>Explanation This is a generic error message used when calls to the RPC server fail.</p> <p>Your Action Contact customer support.</p> |
| 50003 | RpcServerUseProtseqEp (Local) failed at line [(line in the code that caused the error)]: [(RPC error)]. | <p>Explanation This is a generic error message used when calls to the RPC server fail.</p> <p>Your Action Contact customer support.</p> |
| 50004 | RpcServerInqBindings failed at line [(line in the code that caused the error)]: [(RPC error)]. | <p>Explanation This is a generic error message used when calls to the RPC server fail.</p> <p>Your Action Contact customer support.</p> |
| 50005 | UuidFromString failed at line [(line in the code that caused the error)]: [(RPC error)]. | <p>Explanation This is a generic error message used when calls to the RPC server fail.</p> <p>Your Action Contact customer support.</p> |
| 50006 | RpcEpRegister failed at line [(line in the code that caused the error)]: [(RPC error)]. | <p>Explanation This is a generic error message used when calls to the RPC server fail.</p> <p>Your Action Contact customer support.</p> <p style="text-align: right; color: green;">(Continued on next page)</p> |

| (Contd | Message Text | Explanation/Your Action |
|---------------|--|---|
| 50007 | RpcBindingVectorFree failed at line [(line in the code that caused the error)]: [(RPC error)]. | <p>Explanation This is a generic error message used when calls to the RPC server fail.</p> <p>Your Action Contact customer support.</p> |
| 50008 | RpcServerRegisterIf failed at line [(line in the code that caused the error)]: [(RPC error)]. | <p>Explanation This is a generic error message used when calls to the RPC server fail.</p> <p>Your Action Contact customer support.</p> |
| 50009 | RpcStringBindingCompose failed at line [(line in the code that caused the error)]: [(RPC error)]. | <p>Explanation This is a generic error message used when calls to the RPC server fail.</p> <p>Your Action Contact customer support.</p> |
| 50010 | RpcBindingFromStringBinding failed at line [(line in the code that caused the error)]: [(RPC error)]. | <p>Explanation This is a generic error message used when calls to the RPC server fail.</p> <p>Your Action Contact customer support.</p> |
| 50011 | RpcException occurred at line [(line in the code that caused the error)]: [(RPC error)]. | <p>Explanation This is a generic error message used when calls to the RPC server fail.</p> <p>Your Action Contact customer support.</p> |
| 50012 | Invalid device pool version. | <p>Explanation This error occurs if the version of the device pool information is incompatible with the version of software that you are running.</p> <p>Your Action Delete and rebuild your device pool.</p> |
| 50013 | CreateThread [(thread name)] failed at line [(line in the code caused the error)]: [(numeric error code)] [(error message description)]. | <p>Explanation This is a generic error message used when calling the CreateThread function.</p> <p>Your Action Contact customer support.</p> <p style="text-align: right; color: green;">(Continued on next page)</p> |

| (Contd) | Message Text | Explanation/Your Action |
|----------------|--|--|
| 50014 | CreateEvent [(event name)] failed at line [(line in the code caused the error)]: [(numeric error code)] [(error message description)]. | <p>Explanation This is a generic error message used when calling the CreateEvent function.</p> <p>Your Action Contact customer support.</p> |
| 50015 | SetCurrentDirectory [(directory name)] failed at line [(line in the code caused the error)]: [(numeric error code)] [(error message description)]. | <p>Explanation This is a generic error message used when calling the SetCurrentDirectory function.</p> <p>Your Action Contact customer support.</p> |
| 50016 | CreateFile [(file name)] failed at line [(line in the code caused the error)]: [(numeric error code)] [(error message description)]. | <p>Explanation This is a generic error message used when calling the CreateFile function.</p> <p>Your Action Contact customer support.</p> |
| 50017 | ReadFile [(file name)] failed at line [(line in the code caused the error)]: [(numeric error code)] [(error message description)]. | <p>Explanation This is a generic error message used when calling the ReadFile function.</p> <p>Your Action Contact customer support.</p> |
| 50018 | WaitForObject failed at line [(line in the code caused the error)]: [(numeric error code)] [(error message description)]. | <p>Explanation This is a generic error message used when calling the WaitForObject function.</p> <p>Your Action Contact customer support.</p> |
| 50019 | RpcMgmtIsServerListening failed at line [(line in the code caused the error)]: [(RPC error)]. | <p>Explanation This is a generic error message used when calls to the RPC server fail.</p> <p>Your Action Contact customer support.</p> |
| 50020 | RpcServerUnregisterIf failed at line [(line in the code caused the error)]: [(RPC error)]. | <p>Explanation This is a generic error message used when calls to the RPC server fail.</p> <p>Your Action Contact customer support.</p> <p style="text-align: right; color: green;">(Continued on next page)</p> |

| (Contd | Message Text | Explanation/Your Action |
|---------------|---|---|
| 50021 | RpcEpUnregister failed at line [(line in the code caused the error)]: [(RPC error)]. | <p>Explanation This is a generic error message used when calls to the RPC server fail.</p> <p>Your Action Contact customer support.</p> |
| 50022 | RpcMgmtStopServerListening failed at line [(line in the code caused the error)]: [(RPC error)]. | <p>Explanation This is a generic error message used when calls to the RPC server fail.</p> <p>Your Action Contact customer support.</p> |
| 50023 | RpcServerListen failed at line [(line in the code caused the error)]: [(RPC error)]. | <p>Explanation This is a generic error message used when calls to the RPC server fail.</p> <p>Your Action Contact customer support.</p> |

Working with OFTP

Contents

- ▶ Overview B - 2
 - ▶ Defining the SSID and SFID Commands B - 3
 - ▶ How to Create a Partner Definition (OFTP Remote VAN Users) B - 4
 - ▶ Defining the Virtual Filename and Data Format. B - 6
-

Overview

Introduction

This topic contains some special instructions when working with OFTP (Odette File Transfer Protocol).

Defining the SSID and SFID Commands

Introduction

The OFTP protocol uses the SSID and SFID commands to control the flow of data during an OFTP communications session. These commands are created dynamically by Mailbox Server at the start of a communications session. Mailbox Server uses the values you assign to the communications script to create the SSID and SFID commands.

Script variables

You must assign values to the following script variables when you create the Communications Gateway mailbox:

- ▶ The sender's OFTP ID - This is the sender's OFTP code (SSID).
- ▶ The sender's OFTP Password.
- ▶ The sender's new OFTP Password, if he or she is changing the password.

Sample OFTP Remote.script

OFTP Remote.script is a sample script that you can use when sending or receiving data by means of the OFTP protocol.

This script is installed when Gentran:Server is installed. The default file location is: GENSRVNT\CommScr\Samples.

Script Example

This is an example of the Sample OFTP Remote.script that is installed with Gentran:Server.

```
// Sample OFTP Remote Script

// define user editable variables
scriptvar string[10] MailboxID;
scriptvar string[10] MailboxPassword;
string[80] LogonCard;
LogonCard = "LOGON MBX=" + MailboxID + " PSW=" + MailboxPassword
+ "^OD";

// logon procedure
AsciiSndCtl(LogonCard);
AsciiRcvCtl("LODETTE FTP_READY ^OD");
OftpRemote("OFTPID", "OFTP PSW", "");
SetStatus(SUCCESS);
```

OFTPID = The sender's OFTP code (SSID)

OFTP PSW = The sender's OFTP password

Related Documentation

See `OftpRemote` in the *Script Language Reference Guide* for additional information.

How to Create a Partner Definition (OFTP Remote VAN Users)

Introduction

This section describes how to create a new partner definition for use when sending data using the OFTP protocol.

When sending data using the OFTP protocol, you must define the recipient's OFTP ID (also known as SFID) in the Email address in the Gentran:Server Partner Definition.

Reference

See the Partner Editor topic in the Gentran:Server for Windows online help file for more information on creating new Partner Definitions.

Before you begin


Before you begin this procedure, verify that you have the following information:

- Your trading partner's OFTP SFID. This is typically your trading partner's Mailbox ID
- Your trading partner's application code.

Procedure

Use this procedure to create a new partner definition for use with OFTP.

| Step | Action |
|------|--|
| 1 | In Gentran:Server, select Partners from the appropriate area of The Desk. System Response The system displays the Partner Editor dialog box. |
| 2 | Click New . (Continued on next page) |

| (Contd) Step | Action |
|-------------------------|---|
| 3 | <p>Complete the following:</p> <ul style="list-style-type: none"> ▶ Profile ID: Enter your trading partner's internal system identification information. ▶ Name: Enter the name of how you want Gentran:Server Partner Editor to identify your trading partner. ▶ EDI Code: Enter your trading partner's EDI code (SFID). ▶ Application Code: Enter your trading partner's application code (outbound). ▶ Mailbox: From the drop-down list, select the appropriate Mailbox Server mailbox. ▶ E-mail Address: Enter your trading partner's SFID code. <p>System Response Your Partner Definition - New dialog box should look similar to the following.</p>  |
| 4 | Click Save . |
| 5 | Click Exit to exit the dialog box. |

Defining the Virtual Filename and Data Format

Introduction You can use the content type of the message attachment to:

- override the OFTP filename being created on the remote OFTP machine.
- define the data format.

Procedure Use this procedure to define the virtual filename or data format.

| Step | Action |
|------|---|
| 1 | Select Partners from The Desk. System Response The system displays the Partner Editor dialog box. |
| 2 | Select your Partner, and click Outbound . |
| 3 | From the Relationship description drop-down list, select the outbound relationship. |
| 4 | Click Interchanges . |
| 5 | Select the outbound interchange and click Edit . System Response The system displays the Outbound Interchange Entry dialog box. |
| 6 | Click Advanced . (Continued on next page) |

| (Contd) Step | Action |
|-------------------------|---|
| 7 | <p>To override the filename, enter FileName_xx in the Content Type box. where: xx is the filename you want to create on the remote OFTP machine.</p> <p>To specify a data format, enter DataFormat_xx in the Content Type box. where: xx is the data format.</p> <p>To specify both, enter FileName_xx/DataFormat_xx.</p> <p>Note The Content Type field value is in the form of Content type/Content Sub Type. The Content type is a mandatory value, which must be followed by a forward slash (/). A Sub Content Type value must be preceded by a Content Type and a forward slash (/).</p> <p>Example FileName_out161/ or DataFormat_v/FileName_xx</p> |
| 8 | Click Save to return to the Outbound Interchange Select dialog box. |
| 9 | Click Exit to return to the Outbound Relationship dialog box. |
| 10 | Click Save . |
| 11 | Click Exit twice to return to The Desk. |

