

Gentran:Server[®] for Windows[®]

FPI Gateway Configuration Guide

Version 5.2

Sterling Commerce
An IBM Company

Copyright Notice

Gentran:Server for Windows

© Copyright 1995–2008
Sterling Commerce, Inc.
ALL RIGHTS RESERVED

Sterling Commerce Software Trade Secret Notice

THE GENTRAN:SERVER FOR WINDOWS SOFTWARE ("STERLING COMMERCE SOFTWARE") IS THE CONFIDENTIAL AND TRADE SECRET PROPERTY OF STERLING COMMERCE, INC., ITS AFFILIATED COMPANIES OR ITS OR THEIR LICENSORS, AND IS PROVIDED UNDER THE TERMS OF A LICENSE AGREEMENT. NO DUPLICATION OR DISCLOSURE WITHOUT PRIOR WRITTEN PERMISSION. RESTRICTED RIGHTS.

This documentation, the Sterling Commerce Software it describes, and the information and know-how they contain constitute the proprietary, confidential and valuable trade secret information of Sterling Commerce, Inc., its affiliated companies or its or their licensors, and may not be used for any unauthorized purpose, or disclosed to others without the prior written permission of the applicable Sterling Commerce entity. This documentation and the Sterling Commerce Software that it describes have been provided pursuant to a license agreement that contains prohibitions against and/or restrictions on their copying, modification and use. Duplication, in whole or in part, if and when permitted, shall bear this notice and the Sterling Commerce, Inc. copyright notice.

As and when provided to any governmental entity, government contractor or subcontractor subject to the FARs, this documentation is provided with RESTRICTED RIGHTS under Title 48 CFR 52.227-19. Further, as and when provided to any governmental entity, government contractor or subcontractor subject to DFARs, this documentation and the Sterling Commerce Software it describes are provided pursuant to the customary Sterling Commerce license, as described in Title 48 CFR 227-7202 with respect to commercial software and commercial software documentation.

These terms of use shall be governed by the laws of the State of Ohio, USA, without regard to its conflict of laws provisions. If you are accessing the Sterling Commerce Software under an executed agreement, then nothing in these terms and conditions supersedes or modifies the executed agreement.

Product names mentioned herein may be trademarks and/or registered trademarks of their respective companies. Gentran and Gentran:Server are registered trademarks of Sterling Commerce, Inc.

Third Party Software:

Portions of the Sterling Commerce Software may include products, or may be distributed on the same storage media with products, ("Third Party Software") offered by third parties ("Third Party Licensors").

Warranty Disclaimer

This documentation and the Sterling Commerce Software which it describes are licensed either "AS IS" or with a limited warranty, as set forth in the Sterling Commerce license agreement. Other than any limited warranties provided, NO OTHER WARRANTY IS EXPRESSED AND NONE SHALL BE IMPLIED, INCLUDING THE WARRANTIES OF MERCHANTABILITY AND FITNESS FOR USE OR FOR A PARTICULAR PURPOSE. The applicable Sterling Commerce entity reserves the right to revise this publication from time to time and to make changes in the content hereof without the obligation to notify any person or entity of such revisions or changes.

The Third Party Software is provided 'AS IS' WITHOUT ANY WARRANTY AND ANY EXPRESSED OR IMPLIED WARRANTIES, INCLUDING BUT NOT LIMITED TO, THE IMPLIED WARRANTIES OF MERCHANTABILITY, AND FITNESS FOR A PARTICULAR PURPOSE ARE DISCLAIMED. FURTHER, IF YOU ARE LOCATED OR ACCESSING THIS SOFTWARE IN THE UNITED STATES, ANY EXPRESS OR IMPLIED WARRANTY REGARDING TITLE OR NON-INFRINGEMENT ARE DISCLAIMED.

Table of Contents

Preface	About This Guide	
	▶ Introduction	iv
	▶ Description of Contents	v
	▶ Getting Support	vi
Chapter 1	FPI Gateway Overview	
	▶ Overview	1-2
	▶ FPI Gateway	1-3
	▶ FPI Gateway Mailbox	1-4
Chapter 2	Configuring Communications	
	▶ Introduction	2-2
	Properties	2-4
	▶ Configuration Process	2-4
	▶ FPI Gateway Properties	2-5
	▶ Mailbox Properties	2-10
	▶ FPI Mailbox Properties	2-14
	Configuration	2-35
	▶ Overview	2-35
	▶ Configuring Communications Queues on UNIX	2-36
	▶ How to Configure Your FPI Gateway	2-38
	▶ How to Configure FPI Gateway Mailboxes	2-40
	▶ How to Add, Edit or Delete Advanced Properties	2-46
	▶ How to Configure the Trading Partner	2-50
	▶ How to Modify Mailbox Properties	2-51
Appendix A	Frequently Asked Questions	
	▶ Information Files	A-2
	▶ Reference Material	A-3

About This Guide

Contents

- ▶ Introductioniv
 - ▶ Description of Contentsv
 - ▶ Getting Supportvi
-

Introduction

Overview This document contains the tasks you must follow to:

- configure the FPI Gateway
 - create FPI Gateway mailboxes for your Trading Partners
-

Intended audience The intended audience for this document is:

- system administrators
 - advanced Gentrans:Server for Windows users
 - users with a basic knowledge of the X.400 communications protocol
-

Prerequisite knowledge The audience using this software should be familiar with:

- Microsoft® Windows
 - Gentrans:Server for Windows
 - Communications protocols
 - X.400 Message Handling System
-

Description of Contents

Introduction

This guide is organized into the tasks that you complete when configuring communications for the FPI Gateway.

Organization of chapters

The guide is organized into chapters. A brief description of each chapter's contents follows.

- *About This Guide* explains the content and organization of this guide.
 - *FPI Gateway Overview*, chapter 1, provides a high-level overview of the FPI Gateway.
 - *Configuring Communications*, chapter 2, explains the process for configuring FPI Gateway communications. This chapter also provides the procedures you must follow to configure your FPI Gateway mailboxes.
 - *Frequently Asked Questions*, appendix A, provides answers to common FPI Gateway questions.
-

Getting Support

Introduction The Sterling Commerce Gentran:Server software is supported by trained product support personnel who are available to help you with product questions or concerns.

Note

Gentran:Server Customer Support does not support non-Sterling Commerce products (e.g., SQL Server, Oracle, etc.), but can assist you in configuring non-Sterling Commerce products to work with Gentran:Server.

Phone number For assistance, please refer to your *Getting Started Guide* to determine which support phone number you should use.

Before calling support

To help us provide prompt service, we ask that you do the following:

- Attempt to recreate any problem that you encounter and record the exact sequence of events.
- When you call product support, you should be prepared to provide us with the information below.

Information	Description
Identification	Your company name, your name, telephone number and extension, and the case number (if the question refers to a previously reported issue).
System Configuration	The Gentran:Server version (and any service packs installed) and information about the primary Gentran system controller and all machines experiencing problems, including: the Windows operating system version, amount of memory, available disk space, database version, Microsoft Data Access (MDAC) version, and Internet Explorer version. Also, please describe any recent changes in your hardware, software, or the configuration of your system.
System Data Store	Which machines contain folders in the system data store?
Error Messages	Record the exact wording of any error messages you receive and the point in the software where the error occurred, as well as any log files.
Attempted Solutions	Record any steps that you took attempting to resolve the problem and note all the outcomes, and provide an estimate on how many times the problem occurred and whether it can be reproduced.

Accessing the Sterling Commerce Support Web Site

The Sterling Commerce Customer Support Web Site contains valuable information about getting support for Gentran:Server for Windows, including the:

- scope of support services
- customer support policies
- call prioritizing
- customer support phone directory
- how to create new Support on Demand cases
- how to check the status of Support on Demand cases
- how to add information to Support on Demand cases

The Customer Support Web Site is constantly updated and all Sterling Commerce customers have access to it. This web site also contains the most recent product updates and is a valuable source of product information.

Reference

Refer to the *Getting Started Guide* for information on how to access the Customer Support World Wide Web Site.

Documentation

The Customer Support Web Site contains a documentation library, which has the entire Gentran:Server for Windows documentation set. You can download the product manuals in PDF format from this library at any time.

FPI Gateway Overview

Contents

- ▶ Overview 1 - 2
 - ▶ FPI Gateway 1 - 3
 - ▶ FPI Gateway Mailbox 1 - 4
-

Overview

In this chapter

This chapter provides you with a high-level overview of the FPI Gateway.

What is a Gateway?

Gateways are software components that control the transmission of messages between two parties. The gateway is responsible for using the correct protocols to transfer messages between the sender and receiver. In a paper mail system, the gateway is the letter carrier who moves letters from senders to receivers. The letter carrier ensures that each letter has an address and proper postage before delivering the letter. The letter carrier also transfers the letter using the correct protocol: priority mail, first class, or bulk mail. You are responsible for defining gateway properties.

What is a Mailbox?

Mailboxes store messages that are being transferred between mail recipients. Like a mailbox for paper mail, the messages are stored in the mailbox until they are transferred to the addressee.

There are two types of Gentran:Server mailboxes:

- non-gateway mailboxes
- gateway mailboxes

Non-gateway mailboxes

When you installed Gentran:Server, a default, non-gateway mailbox was created called the Gentran Application mailbox. This mailbox is used by Mailbox Server to hold messages that are being transferred between Gentran:Server for Windows and your Trading Partners.

Gateway mailboxes

You are responsible for creating gateway mailboxes. When you create gateway mailboxes you associate the mailbox with a gateway. The properties you define for each gateway mailbox determines how messages are transferred to your Trading Partners.

Related Topic

See the “Communications Overview” chapter of the “Gentran:Server for Windows Communications User’s Guide” for detailed information on the Mailbox Server system.

FPI Gateway

Introduction The FPI Gateway provides a flexible, secure link between Mailbox Server and different types of communication applications using a standard file interface protocol.

What is FPI? The File Programmatic Interface (FPI) is a standard file interface protocol that is used to control message exchanges between Gentran:Server and external communication applications (or Access Units). The protocol is based on two types of text command files:

- Information File (used to communicate between Gentran:Server and the communication application/Access Unit)
- Result File (used to communicate between the communication application/Access Unit and Gentran:Server)

Configuring the Gateway When you configure the gateway, you define the:

- Periodic Scan Interval
 - Audit level for the FPI log
 - Maximum log file size
 - Post audit file specifications
-

FPI Gateway Mailbox

Introduction FPI Gateway mailboxes are communications- or partner-specific mailboxes for incoming and outgoing messages. The FPI Gateway can manage one or more FPI mailboxes.

FPI Gateway mailboxes When you configure a mailbox to be used with the FPI Gateway, you define the:

- FPI Syntax for Result and Information files
 - Operating system specifications for the communications queue
 - Send options
 - Message priority level
 - Local and Remote queue path
-

Configuring Communications

Contents	▶ Introduction	2 - 2
	Properties	2 - 4
	▶ Configuration Process	2 - 4
	▶ FPI Gateway Properties	2 - 5
	▶ Mailbox Properties	2 - 10
	▶ FPI Mailbox Properties	2 - 14
	Configuration	2 - 35
	▶ Overview	2 - 35
	▶ Configuring Communications Queues on UNIX	2 - 36
	▶ How to Configure Your FPI Gateway	2 - 38
	▶ How to Configure FPI Gateway Mailboxes	2 - 40
	▶ How to Add, Edit or Delete Advanced Properties	2 - 46
	▶ How to Configure the Trading Partner	2 - 50
	▶ How to Modify Mailbox Properties	2 - 51

Introduction

In this chapter This chapter describes the tasks that you must complete to configure your FPI Gateway and FPI Gateway mailbox.

Before you Begin Before you begin, verify that:

- Gentrans:Server for Windows 5.0 has been successfully installed and tested.
- FPI Gateway has been successfully installed.

Key Terms This table describes key terms used in this chapter.

Term	Definition
Access Unit	<p>An Access Unit is an external software module that links the FPI Gateway with an external communication application.</p> <p>Example The ISOTRADE Access unit from ISOCOR is the link between the X.400 Message Handling system and the FPI Gateway.</p>
Communications Queue	<p>The Communications Queue serves as a link between the FPI Mailbox and the communications application. The Communications Queue stores inbound messages and reports (Result files) and outbound messages and transmission jobs (Information files).</p> <p>A Communications Queue consists of a root directory and the following sub-directories:</p> <ul style="list-style-type: none"> • IN - Directory where inbound messages (*.edi) and Result files (*.res) are saved. • OUT - Directory where transmission jobs, called Information files (*.inf), are saved. Defective Information files are renamed by the linked Access Unit as BAD files (*.bad). These must be handled manually. • DATA - Directory where outbound Interchanges are saved as "t<number>" files. • UNDEL - Directory where defective Result files and associated, received Interchanges are saved in a separate sub-directory.
FPI Gateway	<p>The FPI Gateway provides a flexible, secure link between Mailbox Server and different types of communication applications using a standard file interface protocol.</p>
FPI Mailbox	<p>FPI Gateway mailboxes are communications- or partner-specific mailboxes for incoming and outgoing messages.</p> <p style="text-align: right;">(Continued on next page)</p>

Term	Definition
Information File	Outbound messages and transmission jobs. These files are stored in OUT directory of the Communications Queue.
Result File	Inbound messages and reports. These files are stored in IN directory of the Communications Queue.

Properties

Configuration Process

Introduction This table lists the stages in configuring your communications for use with the FPI Gateway.

Stop

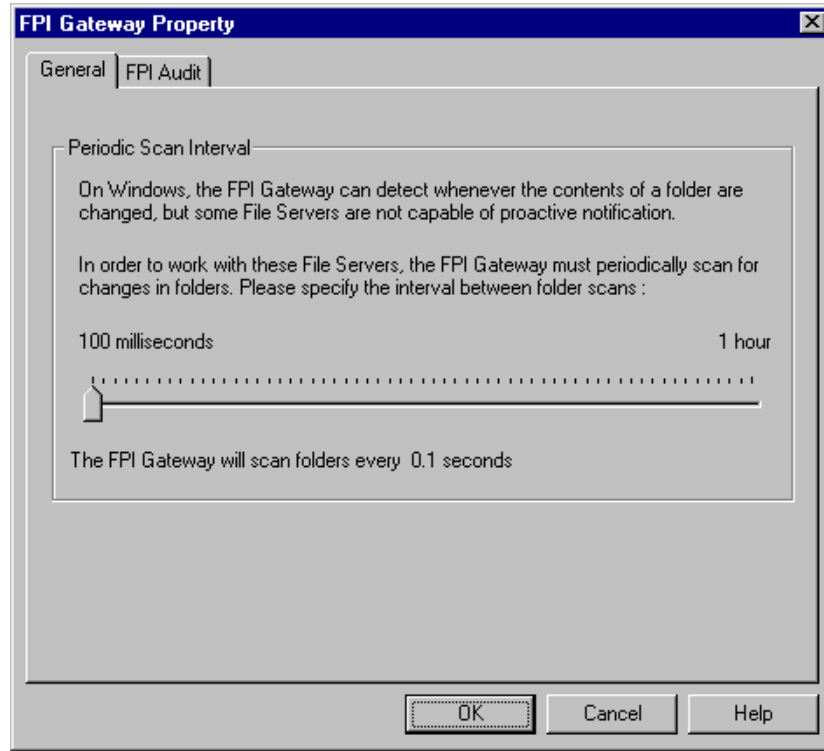
General Mailbox Properties (General tab) configuration is recommended for most FPI Gateway users. Only advanced users who are extremely familiar with FPI should ever attempt to change ResFieldMap or InfFieldMap properties.

Stage	Description
1	Install the FPI Gateway.
2	<p>Will your Communications Queue physically reside on a UNIX machine?</p> <ul style="list-style-type: none"> <p>▶ If yes, complete the following:</p> <ul style="list-style-type: none"> — Map the UNIX drive where the Communications Queue will reside to the Windows machine using NFS. <p>Reference See <i>Configuring Communications Queues on UNIX</i> on page 2 - 36 for more information.</p> <ul style="list-style-type: none"> — Proceed to the next Stage. <p>▶ If no, proceed to the next Stage.</p>
3	<p>Configure the FPI Gateway in the Mailbox Server Manager.</p> <p>Reference See <i>How to Configure FPI Gateway Mailboxes</i> on page 2 - 40 for instructions.</p>
4	<p>Create and configure the Gentran:Server FPI Gateway mailboxes that you intend to use.</p> <p>Reference See <i>How to Configure Your FPI Gateway</i> on page 2 - 38 for instructions.</p>
5	<p>Associate the mailbox with a Gentran:Server trading partner.</p> <p>Reference See <i>How to Configure the Trading Partner</i> on page 2 - 50 for instructions.</p>

FPI Gateway Properties

Introduction The FPI Gateway Property dialog box defines the properties of the FPI gateway.

Gateway Property General Tab This illustration shows an example of the FPI Gateway Property General tab.

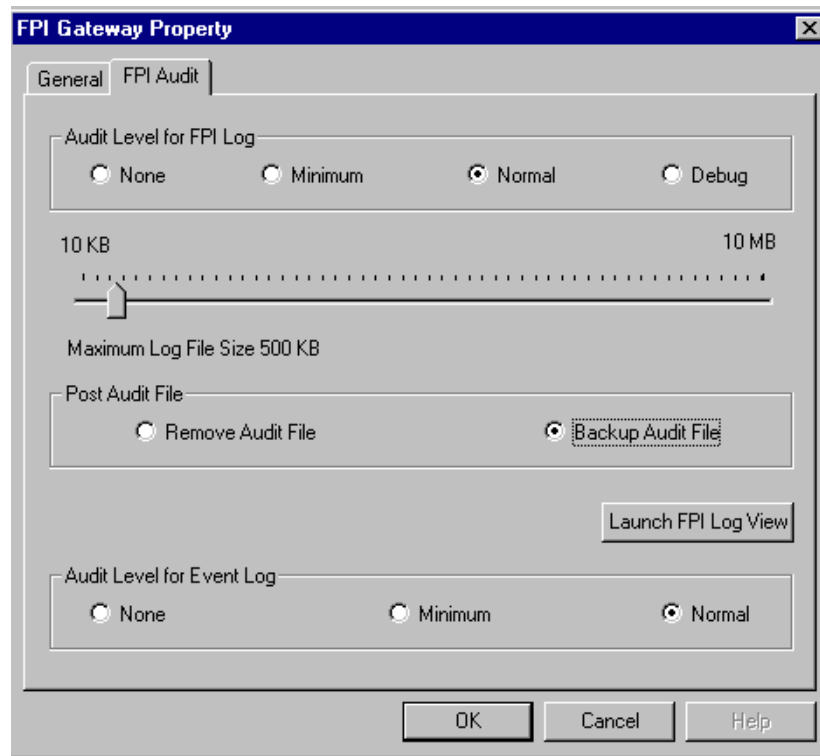


Parts and functions This table describes the parts of the FPI Gateway Property General tab and their functions.

Part	Function
Periodic Scan Interval	<p>Defines the polling interval for the FPI Mailbox Input Queues. The minimum range is 1/10 second; the maximum range is 1 hour. A one second polling interval is recommended.</p> <p>To adjust an interval range in precise increments, use the up and down arrows on the keyboard.</p>

FPI Gateway Property FPI Audit Tab

This illustration shows an example of the FPI Gateway Property FPI Audit tab.



Parts and functions

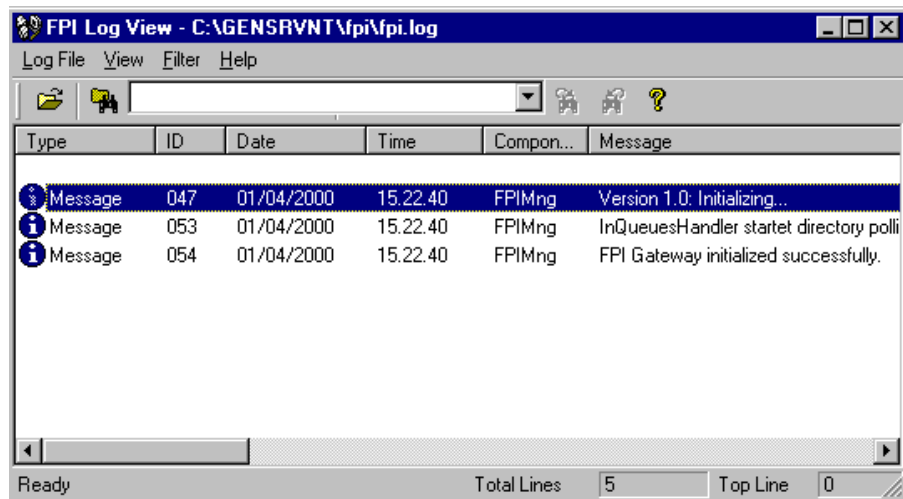
This table describes the parts of the FPI Gateway Property FPI Audit tab and its function.

Part	Function
Audit Level for FPI Log	<p>Defines the level at which messages display on the Log file.</p> <p>Valid audit levels are:</p> <ul style="list-style-type: none"> • None - No messages display on the Log file. • Minimum - Only messages in the Warning, Error and Fatal classes display on the Log file. • Normal (recommended) - All messages in the Message, Warning, Error and Fatal classes display on the Log file. • Debug - All messages in the Message, Warning, Error and Fatal classes, as well as messages that are helpful in debugging errors display in the log file.
Maximum Log File slider	<p>Limits the maximum size of the Log file. The file size depends on how your system is used, however 500k is recommended. Large Log files can significantly increase the time it takes to load the Log file Viewer.</p> <p style="text-align: right; color: green;">(Continued on next page)</p>

(Contd) Part	Function
Launch FPI Log View button	Launches the Log file browser. Reference See the FPI Log View dialog box and Parts and Functions later in this section for a complete description of this browser.
Post Audit File	Describes what action to take when the maximum Log file size is exceeded. Options are: <ul style="list-style-type: none"> • Remove Audit File - The Log file is deleted. • Backup Audit File - The existing Log file is renamed and marked with a date/time stamp. All subsequent Log outputs are written into a new Log file.
Audit Level for Event Log	Defines the level at which messages are displayed in the Windows Event Viewer. All FPI Gateway entries are identified by the source name GSMFPIGateway. Valid audit levels are: <ul style="list-style-type: none"> • None - No messages display in the Event Viewer. • Minimum - Only messages in the Warning, Error and Fatal classes display in the Event Viewer. • Normal (recommended) - All messages in the Message, Warning, Error and Fatal classes display in the Event Viewer. Reference Please see the “Gentran:Server for Windows Administration Guide” for more information on the Event Viewer.

FPI Log View

This illustration shows an example of the FPI Log View.



Parts and functions

This table describes the parts of the FPI Log View and its functions.

Part	Function
Main Menu items	
Log File	Contains these functions: <ul style="list-style-type: none"> ▶ Open - enables you to view a selected FPI Gateway log file. ▶ Exit - exits the FPI Log View program.
View	Contains these functions: <ul style="list-style-type: none"> ▶ Search - enables you to search for keywords and patterns in the log file. Valid search expression syntax: <ul style="list-style-type: none"> ▶ ? Exactly one character ▶ * Sequence of characters (0..n characters) ▶ [character set] One character that is member of the character set. ▶ [!character set] A character that is not member of the character set. ▶ ^search pattern Find a search pattern at the beginning of a column. ▶ Search pattern\$ Find a search pattern at the end of a column. <p>Example (Search Pattern): *[eE]rror[123]*</p> In a column an arbitrary character string is followed by the character string "error" or "Error". This string is followed by at least one character, but no "1", "2" or "3". <ul style="list-style-type: none"> ▶ Toolbar - displays or hides the Main toolbar. ▶ Status Bar - displays or hides the Status bar. ▶ Tail Mode - displays new log file entries at the end of the log file.
Filter	Defines what messages display.
Help	Displays version information.

(Continued on next page)

(Contd) Part	Function
Log Viewer	
Type	<p>Denotes the Log message type. The level at which messages display is defined on the Audit Level for FPI Log section of the FPI Gateway Property FPI Audit tab. Types of messages are:</p> <ul style="list-style-type: none"> • Message - Informational message that describes FPI Gateway activity. • Warning - Denotes an error that does not terminate the current processing task. • Error - Denotes an error that terminates the current processing task. • Fatal - Denotes an error that shuts down the FPI Gateway. Insufficient memory (RAM or hard disk) is an example of why this happens.
ID	Defines the error message ID.
Date	Defines the date the message was recorded; uses the format MM/DD/YYYY.
Time	Defines the time the message was recorded; uses the format hh.mm.ss.
Component	Specifies the FPI Gateway component.
Message	Describes the event.

Mailbox Properties

Introduction The Mailbox Properties defines general mailbox properties.

Mailbox Properties Addressing tab

This illustration shows an example of the Mailbox Properties Addressing tab.



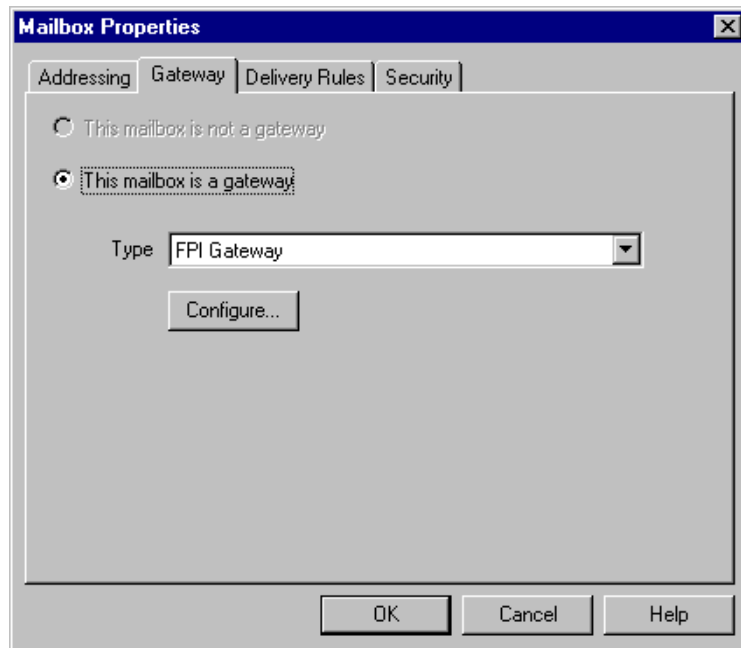
Parts and functions

This table describes the parts of the Mailbox Properties Addressing tab and its functions.

Part	Function
Name	Defines the name of the mailbox.
Gentran e-mail address	Defines the Gentran e-mail address for messages sent from the mailbox.

Mailbox Properties Gateway tab

This illustration shows an example of the Mailbox Properties Gateway tab.



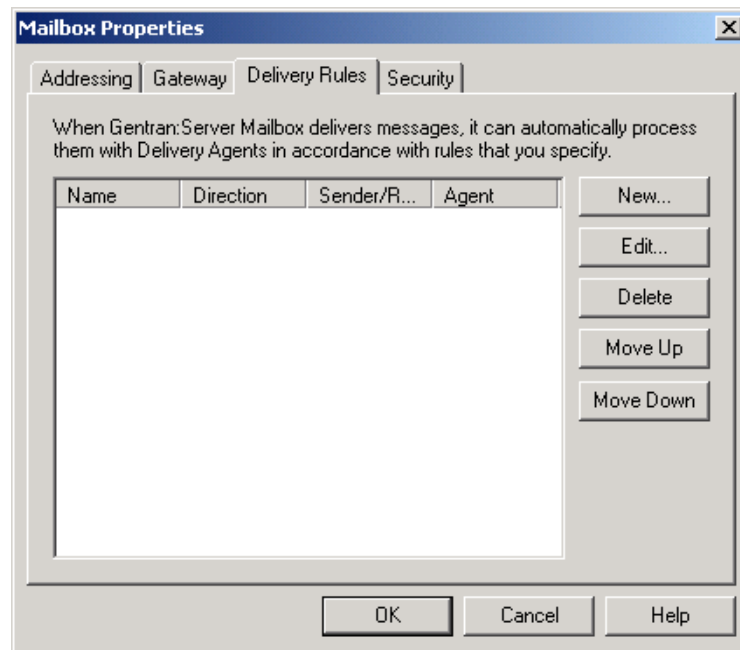
Parts and functions

This table describes the parts of the Mailbox Properties Gateway tab and its functions.

Part	Function
Gateway	Specifies whether the the mailbox is or is not a gateway. Options are: <ul style="list-style-type: none"> ▶ This mailbox is not a gateway. ▶ This mailbox is a gateway.
Type	Specifies type of gateway. Active when “This mailbox is a gateway” radio button is selected.
Configure	Enables you to configure properties for a selected gateway.

Mailbox Properties Delivery Rules tab

This illustration shows an example of the Mailbox Properties Delivery Rules tab.



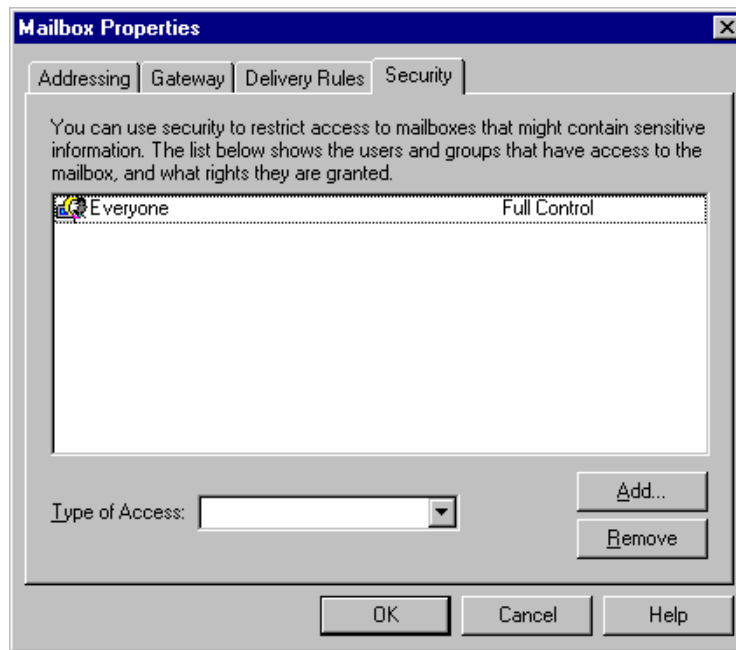
Parts and functions

This table describes the parts of the Mailbox Properties Delivery Rules tab and their function.

Part	Function
Name	Defines the name of the Delivery Rule.
Direction	Identifies if the rule is run when sending or receiving a message.
Sender/Recipient	Identifies the mailbox of the sender or recipient. The mail address can be specified in addition to the mailbox name.
Agent	Identifies the name of the delivery agent to be run.
New	Creates new Delivery Rules.
Edit	Edits existing Delivery Rules.
Delete	Deletes Delivery Rules.
Move Up	Moves the selected Delivery Rule up.
Move Down	Moves the selected Delivery Rule down.

Mailbox Properties Security tab

This illustration shows an example of the Mailbox Properties Security tab.



Parts and functions

This table describes the parts of the Mailbox Properties Security tab and their function.

Part	Function
User's list	Defines users and groups that have access to mailbox.
Type of Access	Designates level at which a user can interact with a mailbox. Values are: <ul style="list-style-type: none"> ▶ Full control ▶ Read ▶ Write
Add	Enables you to grant users or groups mailbox access.
Remove	Enables you to take away user or group mailbox access.
OK	Saves changes; exits dialog box.
Cancel	Closes dialog box without saving changes.
Help	Enables access to online help.



FPI Mailbox Properties

Introduction

The FPI Mailbox Property dialog box defines the properties of the FPI Mailbox.

Warning: Changing FPI Gateway Property Configurations

Before changing any Mailbox property configurations, consider the following:

• Mailbox tab

The Mailbox tab contains settings that control the processing of incoming messages in the Gentran:Server Mailbox.

The default values are recommended for initial operation of the FPI Gateways and should be changed only when necessary by a qualified system administrator.

Changing the default values may prevent messages from being delivered to Gentran:Server.

Res Field Map

Result Field Map settings allow an exceptionally flexible configuration of the reception jobs (Result files) either processed, or to be processed, by the FPI Gateway. These settings should only be changed only by a qualified system administrator with an in-depth understanding of FPI.

Warning

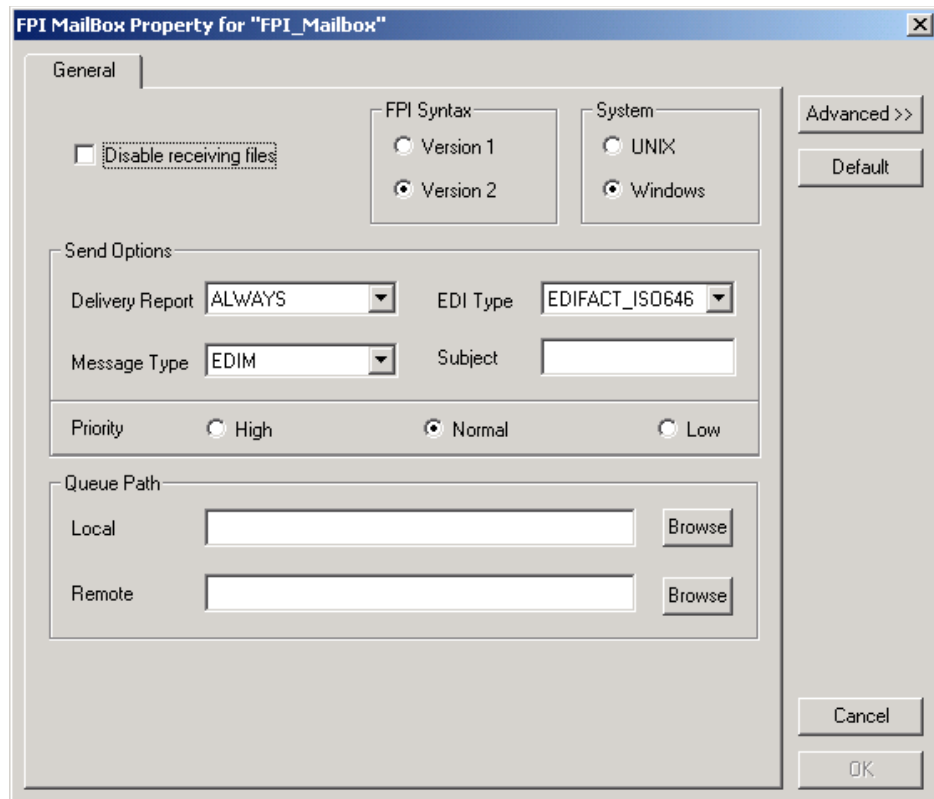
As a rule, the default values must not be changed for linking of ISOTRADE 3.4.1 (NT) / 4.3.4 (UNIX), Syntax version 1 and 2. A change in the default values may result in FPI Gateway reception jobs generated by a linked communications application, to process incorrectly. In particular, changing the configuration to identify mandatory FPI fields (M = mandatory) as "ignored" (I = ignore) or "not used" (U = unused) is strongly discouraged. The configuration will not be subjected to a plausibility test.

• Inf Field Map

A change in Information Field Map default values can result in inaccurate processing by the linked communications application. In particular, suppressing mandatory FPI field generation (M = mandatory) by changing the configuration is strongly discouraged. The configuration will not be subjected to any plausibility test.

FPI Mailbox Property General tab

This illustration shows an example of the FPI Mailbox Property General tab.



Parts and functions

This table describes the parts of the FPI Mailbox Property General tab and its functions.

Part	Function
Disable Receiving Files	<p>Starts or stops the receipt of FPI Mailbox messages. A selected check box (the default setting) means that the FPI Mailbox is stopped and processing tasks on messages received (Result files) are not performed. For configuration and maintenance purposes, this check box should be selected.</p> <p>A cleared check box means that processing tasks for Result files is performed.</p> <p style="text-align: right; color: green;">(Continued on next page)</p>



(Contd) Part	Function
FPI Syntax Version	<p>Defines the FPI Gateway interface Result and Information files syntax version.</p> <p>Options are:</p> <ul style="list-style-type: none"> • Version 1 - ISOTRADE Version 2.0 and earlier; does not include inbound or outbound messages with multiple attachments. Typical fields are INTERCHANGE_NAME, INTERCHANGE-PATH and EDI_TYPE. • Version 2 (default) - ISOTRADE Version 3.x; allows for multiple receivers and attachments, and information for each receiver.
System	<p>Defines the operating system where the Communications Queue resides. Options are:</p> <ul style="list-style-type: none"> • Windows - Select this option if the Communications Queue will reside on a Windows machine. • UNIX - Select this option if the Communications Queue will physically reside on a UNIX machine.
Send Options Delivery Report	<p>Defines when you receive delivery confirmation from your trading partner.</p> <p>Options are:</p> <ul style="list-style-type: none"> • ALWAYS - A delivery confirmation (Delivery Report DR or Non Delivery Report NDR) is always requested for every message. This setting is recommended for networks that provide delivery reports (e.g. X.400-Networks). • NONE - A delivery confirmation (Delivery Report DR or Non Delivery Report NDR) is not requested. This setting is used for networks or Access Units that provide neither a transmission report nor a delivery report. As a rule, the use of such networks is not advised for security reasons. • NON_DELIVERY - A delivery confirmation (Non Delivery Report, NDR) is requested only for messages that cannot be accurately sent to the communications partner. <p>Note The system displays the message transmission status on the Gentran:Server Interchanges Browser as a colored antenna symbol. The color indicates the success or failure of delivery.</p> <p style="text-align: right;">(Continued on next page)</p>

(Contd) Part	Function
Send Options EDI Type	<p>Specifies the EDI Interchange and character set format. The EDI format consists of a prefix and a suffix. The prefix defines the EDI interchange format, the suffix defines the character set. This is a mandatory value.</p> <p>EDI-Interchange formats:</p> <ul style="list-style-type: none"> • EDIFACT - Electronic Data Interchange for Administration, Commerce and Transport. Definition in Standard ISO9735 • ANSIX12 - American National Standard Institute X12 EDI Standard • UNTDI - United Nations Trade Data Interchange. Defined in the UNTDI Standard. • PRIVATE - Bilateral EDI-format established between communications partners • UNDEF - All other EDI-Interchange formats <p>Character sets:</p> <ul style="list-style-type: none"> • ISO646 - ISO Standard which describes a modification of the ASCII-character set which is defined in SIO646 • T61 - Teletex character set, defined by the CCITT in the T.61Recommendation • OCTET - 8-bit binary character set • EBCDIC - Extended Binary Coded Decimal Interchange Code character set defined by IBM. • IA5 - International Alphabet Number 5 is a standard identical with ISO646 for the representation of textual and numeric information.
Send Options Message Type	<p>Specifies what message type to send. This field is mandatory.</p> <p>Options are:</p> <ul style="list-style-type: none"> • EDIM - EDIFACT-Message (P35) Links ISOTRADE 3.4.1 for sending EDIFACT-messages. • EDIN - EDIFACT-Notification (reserved for future use). • FFM - Free Formatted Text (reserved for future use). • IPM - InterPersonal Message (P2) Use: Links ISOTRADE versions prior to 3.4.1. IPM is no longer supported for sending ISOTRADE 3.4.1. • QUERY- Active Status queries (reserved for future use).
Send Options Subject	<p>Appends additional information to a message. This field is optional.</p> <p style="text-align: right; color: green;">(Continued on next page)</p>

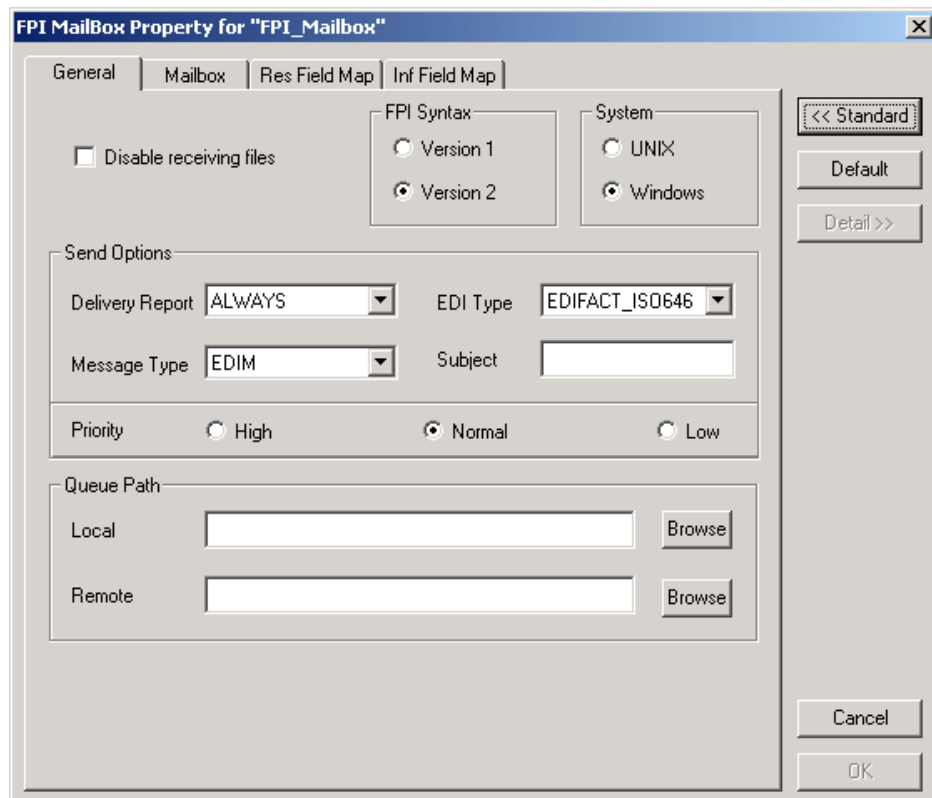


(Contd) Part	Function
Priority	<p>Specifies the priority of FPI Mailbox transmissions. The priority affects the order in which the transmitted messages are processed by the linked communications application.</p> <p>Options are:</p> <ul style="list-style-type: none"> • High - Denotes a transmission with above-average priority; Access Unit processes High priority transmissions before all other transmissions in the OUT queue. Information files with high priority begin with the prefix “h.” • Normal - Denotes transmissions with average priority; Access Unit processes Normal priority transmissions before transmissions with low priority. Information files with normal priority begin with the prefix “n.” • Low - Denotes transmissions with low priority; Access Unit processes Low priority transmissions after all transmissions with a higher priority. Information files with low priority begin with the prefix “l.”
Queue Path Local	<p>Defines the root directory path of a Communications Queue seen by the Windows machine where the FPI Gateway is installed.</p> <p>Example C:\COMM\FPI</p>
Browse	Enables you to browse to or to create a local queue directory.
Queue Path Remote	<p>Defines the root directory path of a Communications Queue seen by the remote machine (UNIX or Windows) where the communications application (Access Unit) is installed.</p> <p>Example /HOME/COMM/FPI</p>
Browse	Enables you to browse to or to create a remote queue directory.
Advanced	<p>Displays additional FPI Mailbox Property tabs. Those tabs are:</p> <ul style="list-style-type: none"> • Mailbox - Contains settings that control the inbound message processing in the Gentran:Server Mailbox. The default values are recommended for FPI Gateway operation and should only be changed by a qualified system administrator. • Res Field Map - Provides an alphabetically sorted view of FPI Result files. • Inf Field Map - The Information Field Definition table provides an alphabetically sorted overview of all fields of an Information file defined in the FPI. <p style="text-align: right;">(Continued on next page)</p>

(Contd) Part	Function
Default	Restores default FPI Mailbox settings except for the following: <ul style="list-style-type: none"> ▶ Queue Path ▶ System ▶ FPI Syntax
Detail	Unavailable
Cancel	Exits the FPI Mailbox Property dialog box; disregards configuration changes.
OK	Unavailable until valid Local and Remote Communications Queue path information is entered. This prevents you from saving invalid Communications Queue paths.

Mailbox tab

This illustration shows an example of the FPI Mailbox Property Mailbox tab. This tab displays when **Advanced** button is selected on the FPI Mailbox Property General tab.



Parts and functions

This table describes the parts of the FPI Mailbox Property Mailbox tab and its functions.

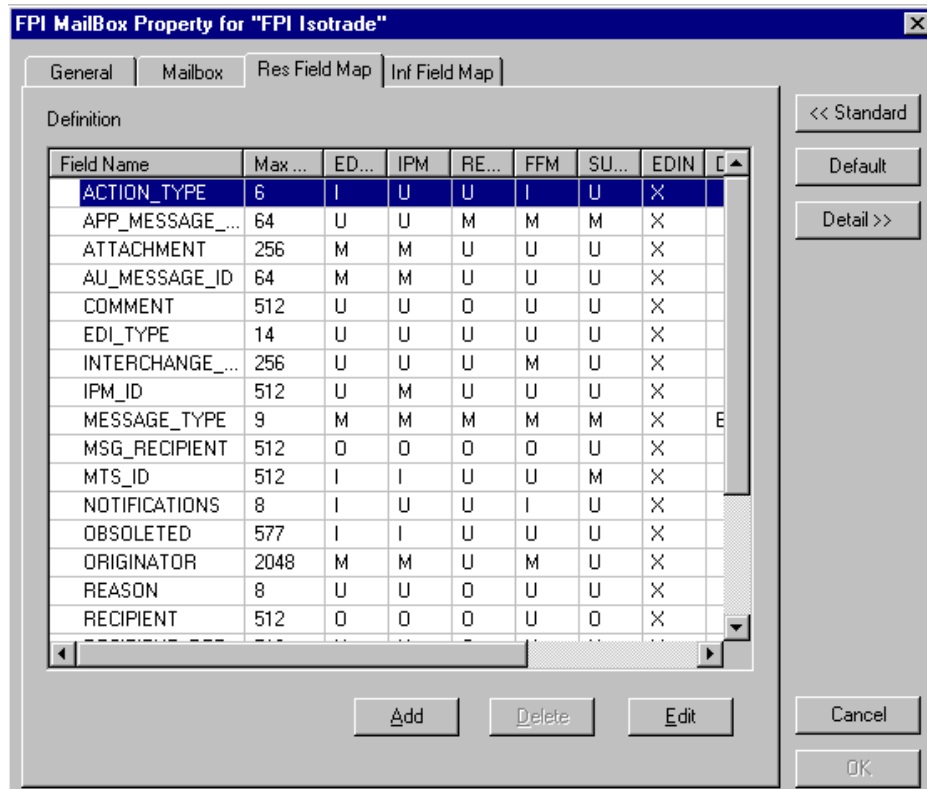
Part	Function
Content Type for all messages	Defines the content and sub-content type for all messages. The default is Application/EDI.
Content Type for all attachments	Defines the content and sub-content type for all attachments. The default is Application/EDI. Reference See the Configuration Program topic in the Gentran:Server for Windows online documentation for additional information on content types.
Recipient	Forwards messages received in an FPI Mailbox to the specified Mailbox. Generally, this is the standard (non-gateway) Gentran Application Mailbox, which stores messages transferred between Mailbox server and Gentran:Server. However all mailboxes and distribution lists available in Gentran:Server Mailbox are listed in the drop-down box. <div style="text-align: right;">(Continued on next page)</div>

(Contd) Part	Function
Post processing message handling	<p>Determines how the transmitted data files are to be handled in the DATA directory of a Communications Queue. These files pertain to copies of the message attachments (e.g., EDI-Interchange) which are managed in the Gentran:Server Mailbox. Valid values are:</p> <ul style="list-style-type: none"> • Delete after Delivery Report (Default) - Deletes an EDI Interchange file from the DATA directory upon receipt of a network-generated positive Transport-reception report. This setting is recommended for all networks (e.g., X.400-Network, ISOTRADE-link) that provide transport-reception reports for a message sender. • Delete after Submission Confirmation - Deletes an EDI Interchange file from the DATA directory upon receipt of a transport-delivery report created by the linked communications application. This transport-delivery report is a positive report that is sent to the message sender when the message has been forwarded from the linked communications application to the network. This setting is for all networks that only create transport-delivery reports. • Delete after <n> Days - Files in the DATA directory are deleted after a defined number of days. <p>Note This setting is recommended for networks that do not create transport-delivery or transport-reception reports. This setting reduce errors that occur due to insufficient hard disk space.</p> <ul style="list-style-type: none"> • Never - Files are never deleted from the DATA directory. This setting should be selected only when the DATA directory size is maintained by deleting or archiving the old messages (see also the Delete after <n> Days mode). <p>Stop If None is selected and DATA directory messages are not deleted or archived, errors may occur due to insufficient hard disk space.</p>
Standard	Closes Advanced properties.
Default	Restores the default FPI Mailbox settings <u>except</u> for the following: <ul style="list-style-type: none"> • Queue Path • System • FPI Syntax
Detail	Unavailable. <div style="text-align: right; color: green;">(Continued on next page)</div>

(Contd) Part	Function
Cancel	Exits the FPI Mailbox Property dialog box; discards configuration changes.
OK	Saves changes; exits the dialog box. Note The OK button is unavailable until valid Local and Remote Communications Queue path information is entered on the General tab of the FPI Mailbox Property dialog box. This prevents you from saving invalid Communications Queue paths.

Res Field Map tab (List View)

This illustration shows an example of the FPI Mailbox Property Res Field Map tab in List view. This tab displays when the **Advanced** button is selected on the FPI Mailbox Properties General tab.



Note

Result Field Map settings allow an exceptionally flexible configuration of the reception jobs (Result files) either processed, or to be processed, by the FPI Gateway. These settings should only be changed only by a qualified system administrator with an in-depth understanding of FPI.

(Continued on next page)

STOP

As a rule, the default values must not be changed for linking of ISOTRADE 3.4.1 (NT) / 4.3.4 (UNIX), Syntax version 1 and 2. A change in the default values may result in FPI Gateway reception jobs generated by a linked communications application, to process incorrectly. In particular, changing the configuration to identify mandatory FPI fields (M = mandatory) as "ignored" (I = ignore) or "not used" (U = unused) is strongly discouraged. The configuration will not be subjected to a plausibility test.

Parts and functions

This table describes the parts of the Res Field Map tab in List view and their functions.

Part	Function
Field Name	Describes the field name.
Max Len.	Denotes the maximum field length.
EDIM	Denotes EDI Message (reserved for future use).
IPM	Denotes Inter Personal Message.
REPORT	Message-type report that identifies a delivery report, negative delivery report, or an Access Unit report.
FFM	Denotes Free Formatted Message (reserved for future use).
SUBMITTED	Identifies the notification "delivered to network," which is generated by the Access Unit.
EDIN	Denotes EDI Notification (reserved for future use).
Default	Describes the default value for empty fields.
MinRep	Describes the minimum repetition frequency of the field.
MaxRep	Describes the maximum repetition frequency of the field.
Sep	Describes the Separator character for the elements of the value list of a field.

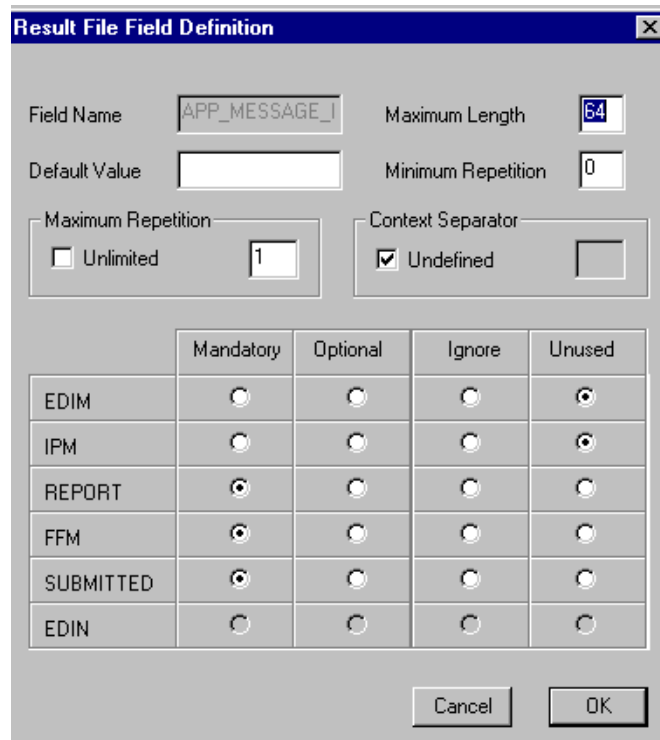
(Continued on next page)

(Contd) Part	Function
Optional/ Mandatory values	<p>Defines whether a field is mandatory or optional. Values can only be changed in Edit mode.</p> <p>Note Changing optional or mandatory values is not recommended unless you have in-depth understanding of FPI.</p> <p>Valid values are:</p> <ul style="list-style-type: none"> • M - Mandatory. The field must be created in a reception job for the particular message type. An error is generated if the field is not present. The Result file is moved into the UNDEL directory. • O - Optionally used field. The field can occur in the context of the message type. The user can specify that the field is to be parsed and taken into the field list, if it is present. This is a necessary, but does not ensure that the field is later evaluated by the FPI Gateway Result file processor. • U - Optional unused field. The field is permitted in the context of the message type, but should not be used. The user can specify that this field will generate an error (regardless of whether the syntax is correct). The Result file will be moved to the UNDEL directory. • I - Optional, ignored field. The field is allowed in the context of the message type, but should be ignored. The user can specify that this field will never generate an error (even if it is syntactically incorrect). • X - Unacceptable field Use. A field that is generally not allowed in the context of message type. For internal use by the FPI Gateway system. If a field has the default value X, then the user cannot change it.
Standard	Closes Advanced properties.
Default	Restores default values.
Detail	Enables you to view a field's properties. When in Detail mode, the left side of the screen displays a list of FPI fields. By clicking a field, the field properties display on the right side of the screen. This view is described later in this chapter.
Add	<p>Adds fields to the Res Field Map.</p> <p>Types of fields:</p> <ul style="list-style-type: none"> • System Fields - fields that cannot be deleted or renamed • User Defined Fields - fields the user adds that can be added, changed or deleted. <p style="text-align: right; color: green;">(Continued on next page)</p>

(Contd) Part	Function
Delete	Deletes user defined field definition.
Edit	Enables you to edit a selected field definition.
Cancel	Exits the FPI Mailbox Property dialog box; discards configuration changes.
OK	Saves changes; exits the dialog box. Note The OK button is unavailable until valid Local and Remote Communications Queue path information is entered on the General tab of the FPI Mailbox Property dialog box. This prevents you from saving invalid Communications Queue paths.

Result File Field Definition (Add or Edit mode)

This illustration shows an example of the Result File Field Definition dialog box. This dialog box displays when **Add** or **Edit** is selected on the Res Field Map List view tab.



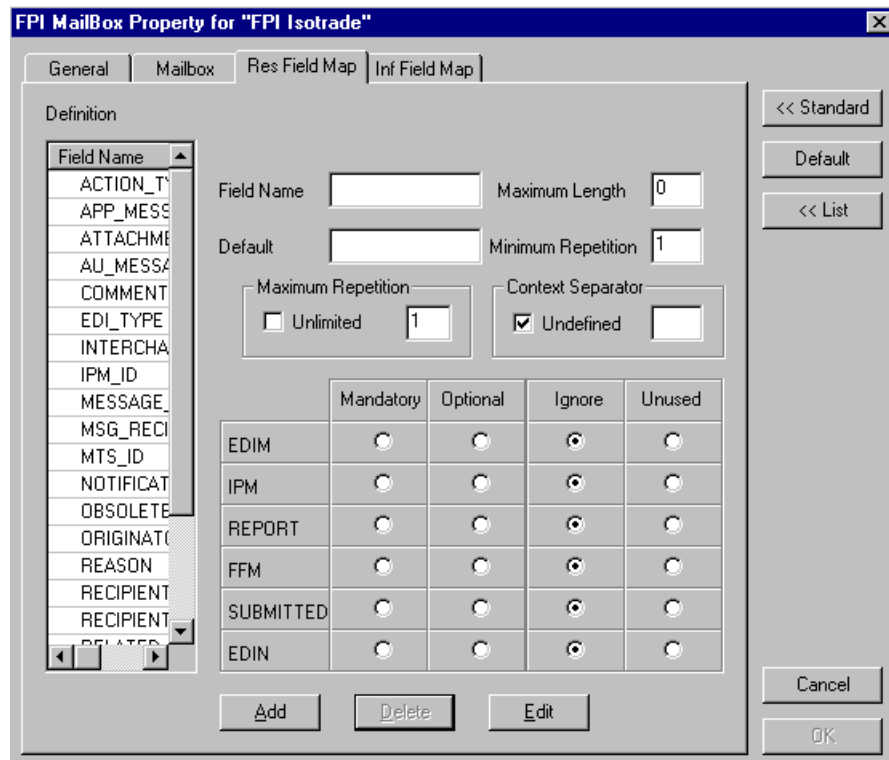
Parts and functions

This table describes the parts of the Result File Field Definition and their functions.

Part	Function
Field Name	Describes the field name. This name in this field cannot be changed in Edit mode.
Maximum length	Describes the maximum field length.
Default Value	Describes the default value for empty fields. The values in this field overwrite the default values of a communications application.
Minimum Repetition	Specifies the minimum number of times a Results File field may repeat.
Maximum Repetition Unlimited	Specifies that a Result File field may repeat without limitation.
Maximum Repetition	Specifies how many times a field repeats in a Result File.
Context Separator Undefined	Specifies that the character separator for the elements of the value list have not been defined.
Context Separator	Specifies a character separator for the elements of the value list.
Mandatory	Denotes that field is mandatory; displays as M in Table view.
Optional	Denotes optional field; displays as O in Table view.
Ignore	Denotes optional, ignored field; displays as I in Table view.
Unused	Denotes optional, unused field; displays as U in Table view.
Cancel	Exits the FPI Mailbox Property dialog box without saving configuration changes.
OK	Saves changes; exits the dialog box. Note The OK button is unavailable until valid Local and Remote Communications Queue path information is entered on the General tab of the FPI Mailbox Property dialog box. This prevents you from saving invalid Communications Queue paths.

**Res Field Map
Tab (Detail View)**

This illustration shows a Detail view of the FPI Mailbox Properties Res Field Map tab.



**Parts and
functions**

This table describes the parts of the FPI Mailbox Properties Res Field Map tab in Detail view and their functions.

Part	Function
Field Name	Describes the field name. This name in this field cannot be changed.
Maximum length	Describes the maximum field length.
Default	Describes the default value for empty fields. The values in this field overwrite the default values of a communications application.
Minimum Repetition	Specifies the minimum number of times a Results File field may repeat.
Maximum Repetition Unlimited	Specifies that a Results File field may repeat without limitation.
Maximum Repetition	Specifies how many times a field repeats in a Result File.

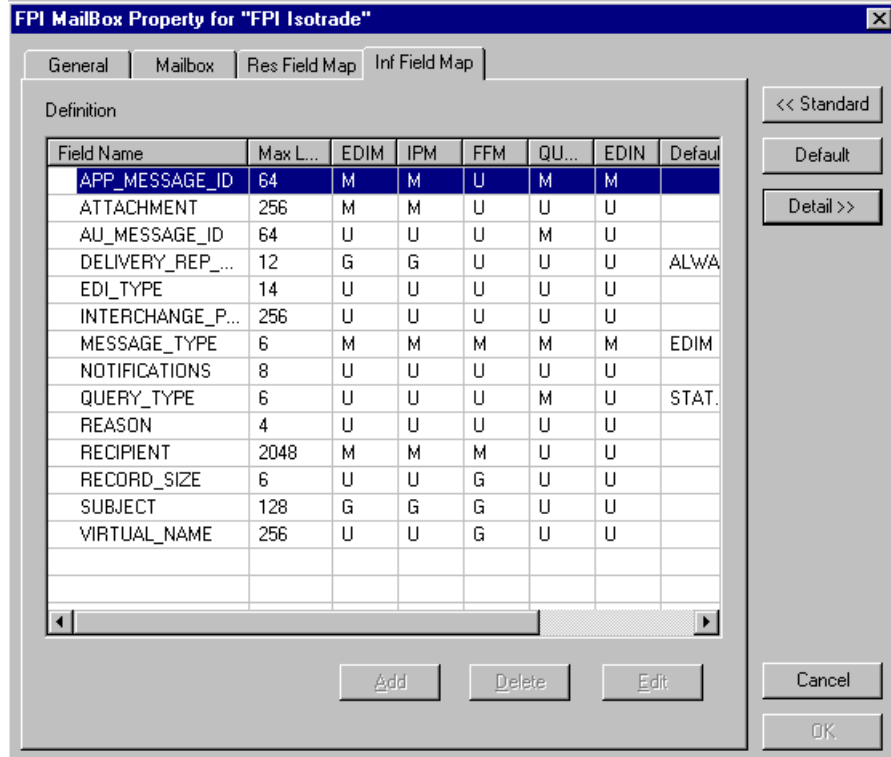
(Continued on next page)



(Contd) Part	Function
Context Separator Undefined	Specifies that the character separator for the elements of the value list have not been defined.
Context Separator	Specifies a character separator for the elements of the value list.
Mandatory	Denotes that field is mandatory; displays as M in Table view.
Optional	Denotes optional field; displays as O in Table view.
Ignore	Denotes optional, ignored field; displays as I in Table view.
Unused	Denotes optional, unused field; displays as U in Table view.
Standard	Closes Advanced properties.
Default	Default value for empty fields.
List	Switches to Table view.
Add	Enables you to add a field definition in Detail view.
Delete	Activated when at least one user-defined field is created. Otherwise, this option is unavailable.
Edit	Enables you to edit a selected field definition in Detail view.
Cancel	Exits the FPI Mailbox Property dialog box without saving configuration changes.
OK	Saves changes; exits the dialog box. Note The OK button is unavailable until valid Local and Remote Communications Queue path information is entered on the General tab of the FPI Mailbox Property dialog box. This prevents you from saving invalid Communications Queue paths.

Inf Field Map Tab (List View)

This illustration shows an example of the FPI Mailbox Properties Inf Field Map tab. This tab displays when the Advanced button is selected on the FPI Mailbox Properties General tab.



Parts and functions

This table describes the parts of the FPI Mailbox Properties Inf Field Map tab and their functions.

Part	Function
Field Name	Describes the field name.
Max Len.	Describes the maximum field length.
EDIM	Describes the EDI Message (reserved for future use).
IPM	Describes the Inter Personal Message.
FFM	Describes the Free Formatted Message (reserved for future use).
QUERY	Describes the Active Status queries (reserved for future use).
EDIN	Describes the EDI Notification (reserved for future use).
Default	Describes the default value for non-filled fields.

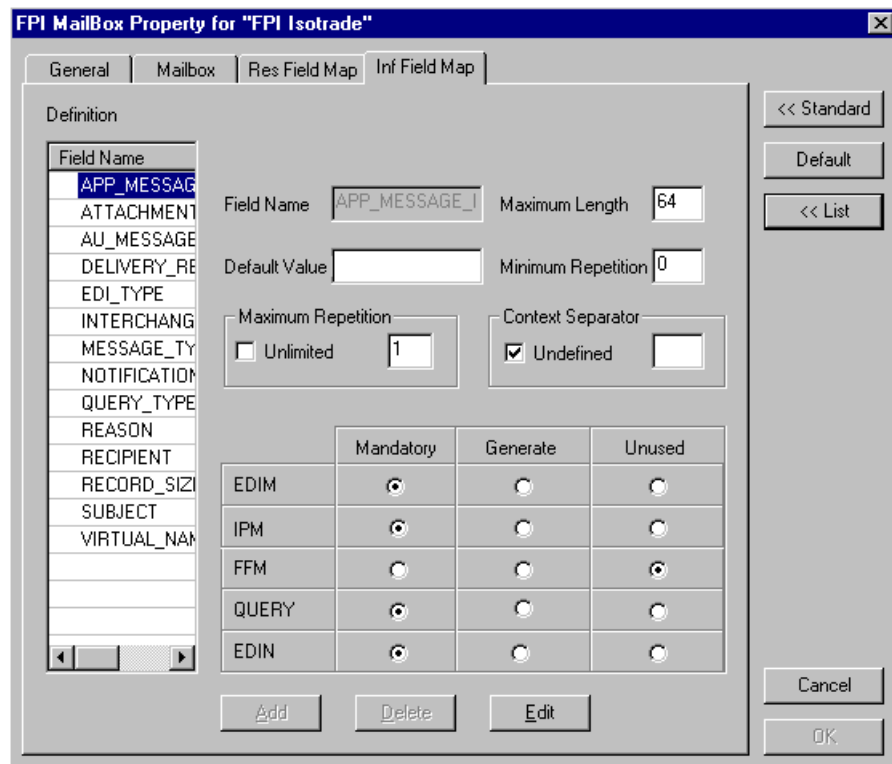
(Continued on next page)



(Contd) Part	Function
Max Rep	Specifies how many times that an Information File field may repeat.
Min Rep	Specifies the minimum number of times an Information File field may repeat.
Sep	Describes the Separator character for the elements of the value list of a field, which in the syntax of FPI are found in square brackets.
Optional/ Mandatory values	<p>Defines whether a field is optional or mandatory.</p> <p>Valid values are:</p> <ul style="list-style-type: none"> • M - Mandatory; this field must be created in a transmit job for the particular message type. • G - Optional, generated field; This field is allowed in the context of the message type, and should be created. • U - Optional unused field; This field is allowed in the context of the message type, but should not be created. • X - A field that is generally not allowed in the context of the message type; for internal FPI Gateway system use. If a field has a default value of X, it cannot be changed.
Standard	Closes Advanced properties.
Default	Restores default settings.
Detail	Enables you to view a field's properties. When in Detail mode, the left side of the screen displays a list of FPI fields. By clicking a field, the field properties display on the right side of the screen. This view is described later in this chapter.
Add	Unavailable.
Delete	Unavailable.
Edit	Enables you to edit a selected field definition. Only active when a field definition is highlighted.
Cancel	Exits the FPI Mailbox Property dialog box; discards configuration changes.
OK	<p>Saves changes; exits the dialog box.</p> <p>Note The OK button is unavailable until valid Local and Remote Communications Queue path information is entered on the General tab of the FPI Mailbox Property dialog box. This prevents you from saving invalid Communications Queue paths.</p>

Inf Field Map Tab (Detail View)

This illustration shows the FPI Mailbox Properties Inf Field Map tab in Detail view.



Parts and functions

This table describes the parts of the Inf Field Map tab in Detail view and their functions.

Part	Function
Field Name	Describes the field name. This name in this field cannot be changed.
Maximum length	Describes the field length.
Default Value	Describes the default value for empty fields. The values in this field overwrite the default values of a communications application
Minimum Repetition	Specifies the minimum number of times an Information File field may repeat.
Maximum Repetition Unlimited	Specifies that as Information File field may repeat without limitation.
Max Repetition	Specifies the maximum number of times that an Information File field may repeat.

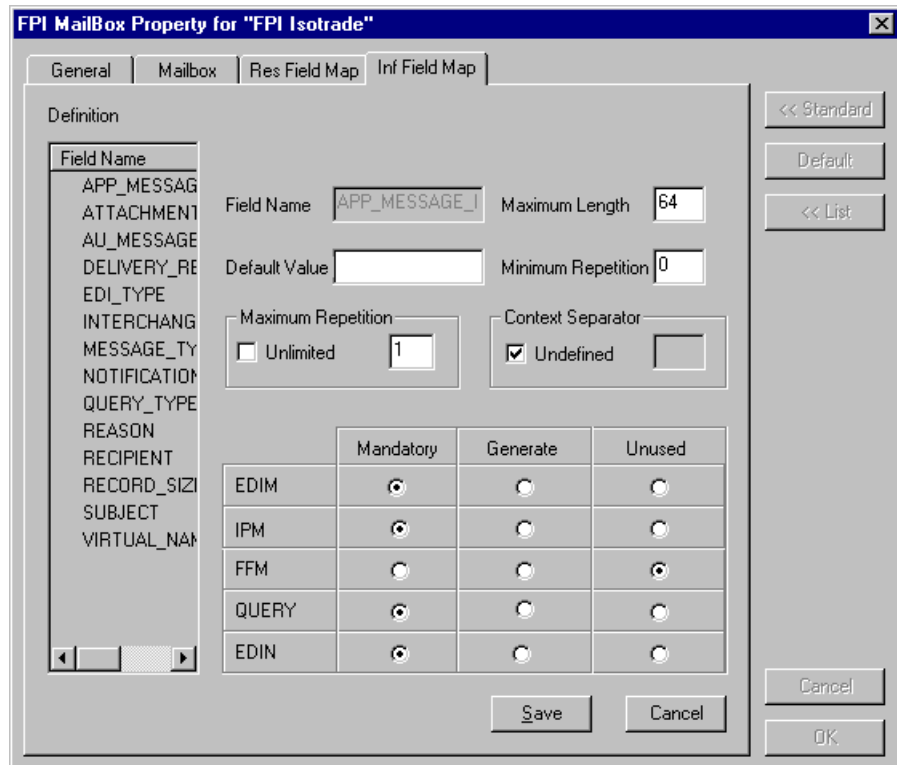
(Continued on next page)



(Contd) Part	Function
Context Separator Undefined	Specifies that the character separator for the value list elements have not been defined.
Context Separator	Specifies a character separator for the elements of the value list.
Mandatory	Denotes that field is mandatory; displays as M in Table view.
Generate	Denotes an optional, generated field; displays as G in Table view.
Unused	Denotes an optional, unused field; displays as U in Table view.
Standard	Closes Advanced properties.
Default	Restores default settings.
List	Switches to Table view.
Cancel	Exits the FPI Mailbox Property dialog box; discards configuration changes.
OK	Saves changes; exits the dialog box. Note The OK button is unavailable until valid Local and Remote Communications Queue path information is entered on the General tab of the FPI Mailbox Property dialog box. This prevents you from saving invalid Communications Queue paths.
Add	Unavailable.
Delete	Unavailable.
Edit	Enables you to edit a user-defined field definition. Only active when a field definition is highlighted.

**Inf Field Map
Tab (Edit Mode)**

This illustration shows FPI Mailbox Properties Inf Field Map Detail view in Edit mode.



**Parts and
functions**

This table describes the parts of Inf Field Map Tab in Edit mode and their functions.

Part	Function
Field Name	Describes the field name. This name in this field cannot be changed.
Maximum length	Describes the maximum field length.
Default Value	Describes the default value for empty fields. The values in this field overwrite the default values of a communications application
Minimum Repetition	Specifies the minimum number of times an Information File field may repeat.
Maximum Repetition Unlimited	Specifies that as Information File field may repeat without limitation.
Maximum Repetition	Specifies the maximum number of times that an Information File field may repeat.

(Continued on next page)



(Contd) Part	Function
Context Separator Undefined	Specifies that the character separator for the value list elements have not been defined.
Context Separator	Specifies a character separator for the elements of the value list.
Mandatory	Denotes that field is mandatory; displays as M in Table view.
Generate	Denotes an optional, generated field; displays as G in Table view.
Unused	Denotes an optional, unused field; displays as U in Table view.
S ave	Saves changes.
C ancel	Terminates Edit mode; disregards configuration changes to the selected field.

Configuration

Overview

Introduction This section describes how to configure your FPI Gateway and FPI Gateway mailbox.

Where to Begin Use this table to determine your starting procedure.

IF your Communications Queue will be...	THEN start with procedure...
Physically located on a UNIX machine,	<i>Configuring Communications Queues on UNIX</i> on page 2 - 36.
Will be physically located on a Windows machine,	<i>How to Configure Your FPI Gateway</i> on page 2 - 38.

Configuring Communications Queues on UNIX

Introduction This section describes the process of mapping the root directory of a Communication Queue located on a UNIX machine to a Windows computer using NFS (Network File Sharing).

NFS Product Examples NFS product examples are:

- Omni NFS Gateway Version 4.0 by XLINK
- Intergraph Diskaccess NFS Client Version 04.01.00.07

Note

You must verify that your NFS product accurately maps Windows User Rights to UNIX. Incorrect Access Rights can prevent the FPI Gateway from functioning properly.

Stages This table describes the stages of configuring a Communications Queue.

Stage	Description
1	Export a UNIX directory.
2	Map a UNIX drive. Note This procedure is based on an XLINK product.

How to export a UNIX Directory

Use this procedure to export a UNIX directory.

Step	Action
1	Verify that the NFS Server process is running.
2	Log on to the UNIX computer as root.
3	In the export table, enter the directory to be exported to your Windows computer. Usually, this is the table /etc/exports.
4	Assign read, write, and execute privileges to the directory. Example (lines in /etc/exports): /home/smith- rw=pc1 Note The name of the Windows computer must be entered together with the IP address in the file /etc/hosts. (Continued on next page)

(Contd) Step	Action
5	<p>Enter <bold>ping <italics>computer_name<end italics><end bold> to check whether the UNIX computer can map the name of the Windows computer to an IP address.</p> <p>Where</p> <ul style="list-style-type: none"> ▶ <bold> and <italics> describe necessary formatting characteristics ▶ Computer_name is the name of the Windows computer. <p>Example ping <i>computername</i></p>
6	<p>Enter <bold>importfs -a<end bold> to process the export table a second time.</p> <p>Where</p> <ul style="list-style-type: none"> ▶ <bold> describes necessary formatting characteristics <p>Example importfs -a</p>

How to map a UNIX Drive

Use this procedure to map a UNIX drive.

Step	Action
1	<p>Install the NFS Client software.</p> <p>Reference See your Omni NFS Gateway and Omni NFS online Help systems for installation, configuration and mapping instructions.</p>
2	<p>Create a directory on the mapped NFS drive, then create and save a file to that directory to ensure that the mapping process was successful.</p>
3	<p>Proceed to <i>How to Configure Your FPI Gateway</i> on page 2 - 38.</p>

How to Configure Your FPI Gateway

Introduction This section describes how to configure FPI Gateway properties. The properties that you define apply to all FPI Gateway Mailboxes.

Note

We recommend that you use the default configuration settings.

Before you begin Before you begin configuring your FPI Gateway you must:

- Install the FPI Gateway
- Verify that the following services are started:
 - Gentran:Server Executive
 - Gentran:Server Mailbox
 - Gentran:Server Communications (optional)

Reference

See the “Gentran:Server for Windows Communications User’s Guide” for instructions on how to start services.

Procedure Use this procedure to configure your FPI gateway.

Step	Action
1	Start Mailbox Server Manager . System Response The system displays the Server Manager browser.
2	Select Mailbox in the Server Manager pane, and then right-click and select Register Server . System Response The system displays the Register Server dialog box.
3	Enter the name of your Mailbox server, and click OK .
4	Select FPI Gateway from the Gateways folder icon.
5	Right-click to select Properties . System Response The system displays the General tab of the FPI Gateway Property dialog box.
6	Define the Periodic Scan Interval setting.

(Continued on next page)

(Contd) Step	Action
7	Click the FPI Audit tab. System Response The system displays the FPI Audit tab dialog box.
8	Define the following: <ul style="list-style-type: none">▶ Audit level for FPI Log▶ Maximum Log File Size▶ Post Audit File specifications▶ Audit Level for Event Log Note We recommend that you use the default configuration settings.
9	Click OK to complete the configuration of this gateway. You are now ready to create FPI Gateway Mailboxes.

How to Configure FPI Gateway Mailboxes

Introduction After you have configured the FPI Gateway, you must create FPI Gateway mailboxes.

Setting up the Communications Queue For the FPI Gateway to work properly, you must enter Local and Remote Communications Queue path information on the General tab of the FPI Mailbox Property dialog box. If valid paths are entered, the OK button on the Mailbox Property dialog box becomes enabled. If the paths are incorrect, the OK button remains unavailable. This prevents you from saving invalid Communications Queue paths.

Example 1: Communications Queue is installed on same machine as the FPI Gateway Gentran:Server, Mailbox Server, FPI Gateway and the Access Unit are all installed on the same Windows machine named PC1. The Communications Queue is located on the Windows directory C:\Comm\FPI

Local: C:\COMM\FPI

Remote: C:\COMM\FPI

Alternatively, you can enter this information in Universal Naming Convention (UNC) notation:

Note

If you are linking the ISOTRADE Access Unit do not use UNC Notation, because ISOTRADE is not able to process directory paths given in UNC Notation.

Local: \\PC1\C\COMM\FPI

Remote: \\PC1\C\COMM\FPI

**Dialog box
Example**

The General tab of the FPI Mailbox Property dialog box should look like this:

The screenshot shows the 'FPI MailBox Property for "FPIGateway"' dialog box. The 'General' tab is active. The 'Disable receiving files' checkbox is unchecked. Under 'FPI Syntax', 'Version 2' is selected. Under 'System', 'Windows' is selected. In the 'Send Options' section, 'Delivery Report' is 'ALWAYS', 'EDIM Type' is 'EDIFACT_ISO646', 'Message Type' is 'EDIM', and 'Subject' is empty. The 'Priority' section has 'Normal' selected. The 'Queue Path' section has 'Local' and 'Remote' both set to 'C:\COMM\FPI'.

**Example 2:
Communications
Queue is installed
on a
Network drive of a
remote machine**

Let "N" be the letter of the disk drive on the Windows computer pc1, where the /HOME/SMITH directory exported by the UNIX-Workstation unixws1 is "mapped." The root directory of the Communications Queue is /HOME/COMM/FPI.

Local: N:\FPI

Remote: /HOME/COMM/FPI

Alternatively, this value can be entered in UNC notation:

Note

If you are linking the ISOTRADE Access Unit don't use UNC Notation, because ISOTRADE is not able to process directory paths given in UNC Notation.

Local: \\PC1\N\FPI

Remote: /HOME/COMM/FPI

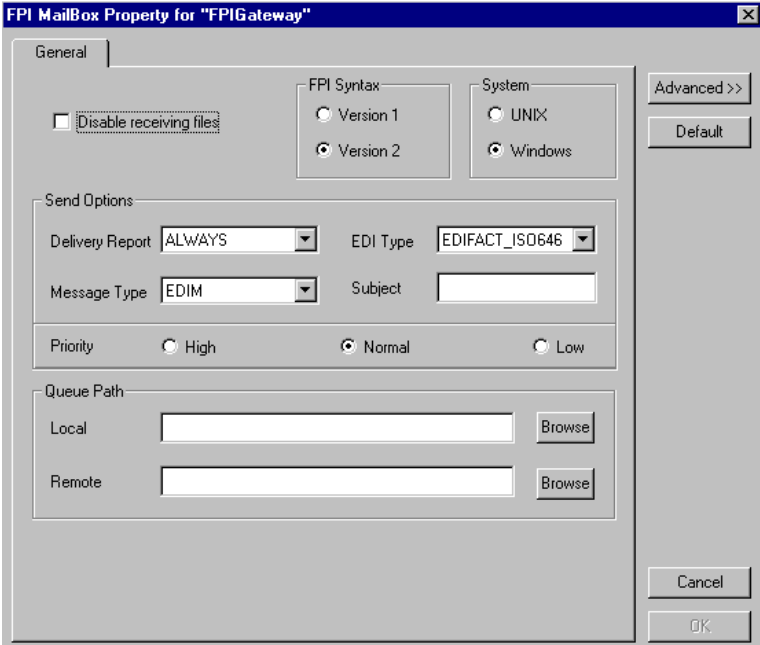
Dialog Box Example

This is an example of what your dialog box should look like:

Procedure

Use this procedure to create FPI Gateway mailboxes.

Step	Action
1	Start Mailbox Server Manager .
2	Select the Mailboxes folder icon.
3	Right-click, and select Create . System Response The system displays the Create Mailbox Wizard.
4	Enter the name of the FPI Mailbox you are creating. Note The name you select should reflect the purpose of the FPI Mailbox.
5	Click Next twice. System Response A system displays dialog box that asks whether you want to use this mailbox as a gateway to another messaging system. (Continued on next page)

(Contd) Step	Action
6	Click Yes, use this mailbox as a gateway.
7	Select FPI Gateway as the type of gateway to use with this mailbox and click Next . System Response The system displays the Create Mailbox Wizard - Summary dialog box.
8	Is the information that you entered correct? <ul style="list-style-type: none"> ▶ If yes, click Finish. ▶ If no, click Back to correct the information. System Response The system displays the FPI Mailbox Property dialog box.  Note If you attempt to create a mailbox and the data store is missing, the system generates an error message box informing you that the mailbox cannot be created. Click OK to exit the message box and click Cancel to exit the Create Mailbox Wizard.
9	Verify that the Disable Receiving Files check box is cleared. (Continued on next page)

(Contd) Step	Action
10	<p>Under FPI Syntax, select the syntax version of the Result and Information files to be used for the FPI interface.</p> <p>Recommendation We recommend Version 2.</p>
11	<p>Under System, select the operating system on which the Communications Queue will reside.</p>
12	<p>Under Send Options, define the following:</p> <p>Delivery Report: ALWAYS is the default value.</p> <p>Message Type: Select EDIM for ISOTRADE Version 3.4.1 or IPM for ISOTRADE releases prior to 3.4.1.</p> <p>EDI Type: Select EDIFACT_646 if EDI interchanges will be sent; select UNDEF_OCTET if binary data is to be sent (for unchanged transmissions of Umlauts).</p> <p>Subject: Enter additional information that will be used as the Subject header (optional).</p>
13	<p>Select the priority level of the FPI Mailbox transmission.</p> <p style="text-align: right;">(Continued on next page)</p>

(Contd) Step	Action	
14	Use the following table to determine your next Action. Note If you are linking the ISOTRADE Access Unit do not use UNC Notation, because ISOTRADE is not able to process directory paths given in UNC Notation	
	IF the Communications Queue will be installed...	THEN...
	locally (on the same machine as the FPI Gateway),	<ul style="list-style-type: none"> ▶ Local: Enter the drive and full path name of the Communications Queue seen by the FPI Gateway. ▶ Remote: Enter the drive and full path name of the Communications Queue seen by the Remote computer. The directory path will be the same as the Local path.
	On a Network drive of a remote machine,	<ul style="list-style-type: none"> ▶ Verify that the Remote machine is mapped to your Windows machine with appropriate Share and Access Rights permissions. <p>Note UNIX users see <i>Configuring Communications Queues on UNIX</i> on page 2 - 36 for instructions.</p> <ul style="list-style-type: none"> ▶ Local: Type the drive and full path name of the Communications Queue seen by the FPI Gateway. ▶ Remote: Type the drive and full path name of the Communications Queue seen by the Remote computer. The directory path will be different from the Local path.



How to Add, Edit or Delete Advanced Properties

Introduction

Although you can edit Advanced Mailbox properties, as a general rule no configuration changes are required or recommended.

Warning

General Mailbox Properties (General tab) configuration is recommended for most FPI Gateway users. Only advanced users who are extremely familiar with FPI should ever attempt to change ResFieldMap or InfFieldMap properties.

Warnings

Before changing any Mailbox property configurations, consider the following:

• Mailbox tab

The Mailbox tab contains settings that control the processing of incoming messages in the Gentran:Server Mailbox. The default values are recommended for initial operation of the FPI Gateways and should be changed only when necessary by a qualified system administrator.

Changing the default values may prevent messages from being delivered to Gentran:Server.

• Res Field Map

Result Field Map settings allow an exceptionally flexible configuration of the reception jobs (Result files) either processed, or to be processed, by the FPI Gateway. These settings should only be changed only by a qualified system administrator with an in-depth understanding of FPI.

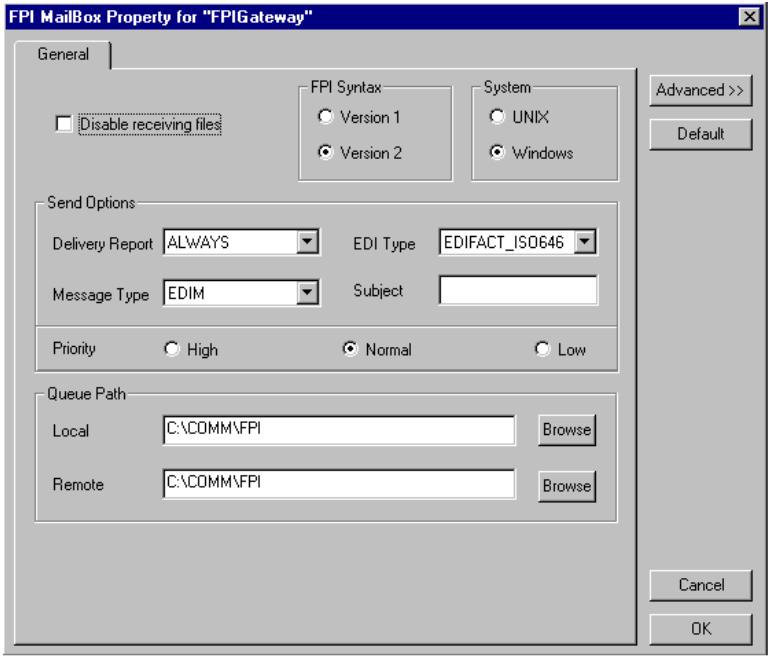
Warning

As a rule, the default values must not be changed for linking of ISOTRADE 3.4.1 (NT) / 4.3.4 (UNIX), Syntax version 1 and 2. A change in the default values may result in FPI Gateway reception jobs generated by a linked communications application, to process incorrectly. In particular, changing the configuration to identify mandatory FPI fields (M = mandatory) as "ignored" (I = ignore) or "not used" (U = unused) is strongly discouraged. The configuration will not be subjected to a plausibility test.

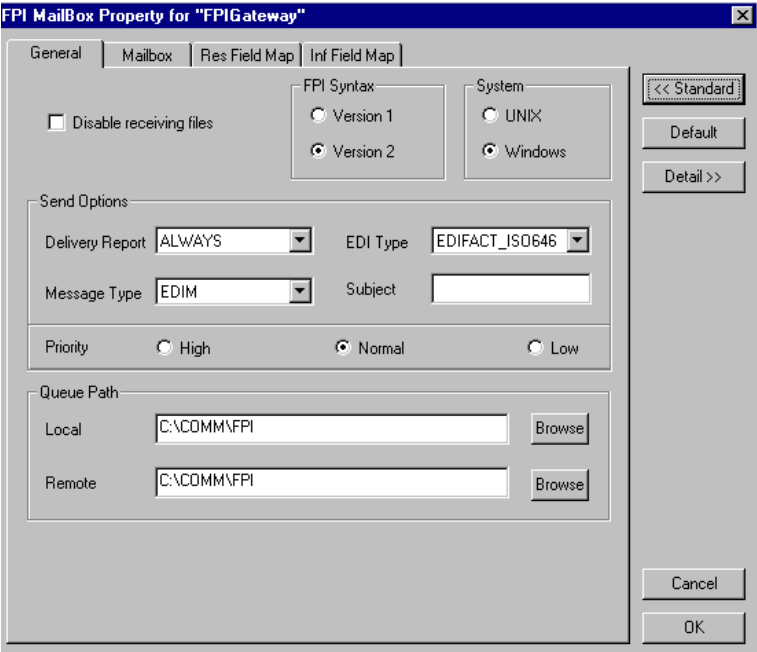
• Inf Field Map

A change in Information Field Map default values can result in inaccurate processing by the linked communications application. In particular, suppressing mandatory FPI field generation (M = mandatory) by changing the configuration is strongly discouraged. The configuration will not be subjected to any plausibility test.

Procedure Use this procedure to edit, add or delete Advanced Mailbox properties.

Step	Action
1	Start the Mailbox Server Manager .
2	Select the FPI Gateway mailbox from the Mailboxes folder.
3	Right-click, and select Properties . System Response The system displays the Mailbox Properties dialog box.
4	<p>Select the Gateway tab and click Configure.</p> <p>System Response The system displays the General Tab of the FPI Mailbox Property dialog box.</p>  <p style="text-align: right; color: green;">(Continued on next page)</p>



(Contd) Step	Action
<p>5</p>	<p>Click Advanced.</p> <p>System Response The system displays the Mailbox, ResFieldMap and InfFieldMap tabs.</p> 
<p>6</p>	<p>Use the following table to determine your next Action.</p> <p style="text-align: right; color: green;">(Continued on next page)</p>

(Contd) Step	Action	
7	IF you want to...	THEN...
	Edit Information or Result fields	Select the appropriate Property tab. To edit from List view: <ul style="list-style-type: none"> ▶ Double-click the FPI field that you want edit. To edit from Detail view: <ul style="list-style-type: none"> ▶ From List view, highlight the field definition that you want to edit, and click Detail to display that view. ▶ Click Edit to switch to that mode. ▶ Make your changes, and click Save.
	To add a user-defined Result field	From FPI Gateway Advanced properties, select the Res Field Map tab. To add in List view: <ul style="list-style-type: none"> ▶ Click Add. ▶ Type the field Definition information ▶ Click OK. To add in Detail view: <ul style="list-style-type: none"> ▶ Click Add. ▶ Type the field Definition information ▶ Click Save.
	Delete user-defined Result field	From FPI Gateway Advanced properties, select the Res Field Map tab. To delete in List view: <ul style="list-style-type: none"> ▶ Highlight the field, click Delete. ▶ Click OK to save your changes. To delete in Detail view: <ul style="list-style-type: none"> ▶ Highlight the field. ▶ Click Delete.



How to Configure the Trading Partner

Introduction

After you configure an FPI Mailbox, you must associate it with a trading partner in Gentran:Server. To do this, you must:

- define the trading relationship using the Gentran:Server Partner Editor
- assign an FPI mailbox as the mailbox to use
- configure the EMail Address field to contain the symbolic alias name of the communications partner. The alias that you use should match what appears in the address book of the communications application. For example, ISOTRADE Access Unit maps the alias name found in the it_addr.dat address book to the X.400 address of the communications partner.

Reference

See the “Using Partners” chapter of the “Gentran:Server for Windows User’s Guide” for instructions on how to set up a trading partner relationship.

How to Modify Mailbox Properties

Introduction This section describes how to modify mailbox properties that were created using the Create Mailbox Wizard.

Procedure Use this procedure to modify mailbox properties.

Step	Action	
1	Start the Mailbox Server Manager .	
2	Expand the Mailboxes folder.	
3	Select the mailbox for which you want to add or modify properties.	
4	Right-click and select Properties from the short-cut menu. System Response The system displays the Mailbox Properties dialog box.	
5	Use this table to determine your next step.	
	IF you want to change the mailbox's...	THEN click this tab...
	<ul style="list-style-type: none"> ▶ name ▶ Gentran E-mail address 	Addressing
	<ul style="list-style-type: none"> ▶ Gateway properties ▶ Configuration properties 	Gateway
	delivery rules	Delivery Rules
	user security permissions	Security
6	Make the appropriate modifications and click OK to save changes and to exit the dialog box.	

Frequently Asked Questions

Contents

- ▶ Information Files A - 2
 - ▶ Reference Material A - 3
-



Information Files

Field Display

Q: Do all listed fields have to appear in an Information file?

A: The listed fields can, but need not appear in the Information file. Which fields are required in an Information file will depend on the linked communications application and on the FPI syntax version. The value that needs defined is found in the specification for the particular communications application.

Information Files

Q: How can the user match the Information files created by the FPI Gateway to the linked communications application ?

A: The user has several options:

- For the optional FPI fields, the user can specify whether the FPI Gateway should generate the fields in the information file (G = generate) or not use them (U = unused). For example, the SUBJECT field for EDIM transmission jobs belongs to the optional fields.
 - Defining a default value for each FPI field - As a rule, this setting is made by the linked communications application, but can be overwritten by input of another value.
 - Specification of a minimum and maximum repetition frequency for each field. As a rule, this setting is permanently defined by the particular communications application. For example, to send messages with multiple attachments, the ATTACHMENT field (syntax version 2) can be repeated as often as necessary.
 - For each field of the FPI, a length restriction can be established. As a rule, this setting is permanently defined by the particular communications application.
 - The OptMand value can be specified for each field of the FPI and for each message type.
-

Field Expansion

Q: Can the list of fields of an Information file be expanded?

A: Yes. However, any expansion of the field list by use of the configuration screen, like that used for the fields of the Result file, was consciously omitted. The standard list already contains the fields defined in the FPI. New, user-defined fields may not conform to FPI.

Reference Material

Additional Information

For additional information, see the following:

- File Programmatic Interface (FPI) for EDI-X.435 (Pedi) & X.420 (P2), ISOCOR, Software Interface Specification, October 1995 (+ Update-Sheets)
 - ISOTRADE Access Unit, Administrator Guide, ISOCOR, December 1996
 - Gentrans:Server for Windows, Administration Guide, User Guide, Communications User's Guide.
-

